

Data Path : Z:\voasrv\HPCHEM1\MSVOA_Y\Data\VY042221\
 Data File : VY004593.D
 Acq On : 22 Apr 2021 18:21
 Operator : SY/MD
 Sample : M2119-01
 Misc : 5.05G/5ML/MSVOA_Y/SOIL
 ALS Vial : 23 Sample Multiplier: 1

Instrument :
 MSVOA_Y
 ClientSampled :

Quant Time: Apr 23 09:23:10 2021
 Quant Method : Z:\voasrv\HPCHEM1\MSVOA_Y\methods\82Y041221S.M
 Quant Title : SW846 8260
 QLast Update : Tue Apr 13 03:38:02 2021
 Response via : Initial Calibration

Compound	R.T.	QIon	Response	Conc	Units	Dev(Min)
Internal Standards						
1) Pentafluorobenzene	7.801	168	117289	50.00	ug/l	0.00
34) 1,4-Difluorobenzene	8.697	114	206034	50.00	ug/l	0.00
63) Chlorobenzene-d5	11.495	117	94013	50.00	ug/l	0.00
72) 1,4-Dichlorobenzene-d4	13.428	152	11478	50.00	ug/l	0.00
System Monitoring Compounds						
33) 1,2-Dichloroethane-d4	8.155	65	80094	61.46	ug/l	0.00
Spiked Amount	50.000	Range	50 - 163	Recovery	=	122.92%
35) Dibromofluoromethane	7.728	113	65793	57.54	ug/l	0.00
Spiked Amount	50.000	Range	54 - 147	Recovery	=	115.08%
50) Toluene-d8	10.185	98	195998	40.30	ug/l	0.00
Spiked Amount	50.000	Range	49 - 140	Recovery	=	80.60%
62) 4-Bromofluorobenzene	12.483	95	22221	13.46	ug/l	0.00
Spiked Amount	50.000	Range	25 - 144	Recovery	=	26.92%
Target Compounds						
						Qvalue
11) Tert butyl alcohol	4.972	59	245219	1909.38	ug/l	99
13) Acrolein	3.741	56	479	3.36	ug/l #	15
16) Acetone	3.960	43	147367	556.37	ug/l	97
18) Methyl Acetate	4.497	43	1653	1.82	ug/l #	78
20) Methylene Chloride	4.741	84	4253	3.38	ug/l	95
25) 2-Butanone	7.002	43	81804	164.79	ug/l	96
29) Tetrahydrofuran	7.368	42	556	1.57	ug/l #	58
31) Cyclohexane	7.795	56	3732	1.56	ug/l #	58
36) 1,1-Dichloropropene	7.795	75	9879	4.83	ug/l #	50
37) Ethyl Acetate	7.002	43	81804	62.05	ug/l #	70
38) Carbon Tetrachloride	7.801	117	12407	7.01	ug/l #	15
40) Benzene	8.173	78	21096	3.67	ug/l	99
48) Methyl methacrylate	9.270	41	36959	32.11	ug/l #	46
51) 4-Methyl-2-Pentanone	10.075	43	18060	14.07	ug/l	98
52) Toluene	10.246	92	33432	8.98	ug/l	95
55) 1,1,2-Trichloroethane	10.624	97	2234	2.01	ug/l #	27
56) Ethyl methacrylate	10.496	69	3222	1.99	ug/l #	1
59) 2-Hexanone	10.837	43	29672	34.48	ug/l	96
67) Ethyl Benzene	11.599	91	20558	5.73	ug/l	94
68) m/p-Xylenes	11.703	106	20543	15.40	ug/l	97
69) o-Xylene	12.032	106	10610	8.49	ug/l	100
73) Isopropylbenzene	12.331	105	6631	7.48	ug/l	98
74) N-amyl acetate	12.111	43	26171	87.64	ug/l #	52
75) 1,1,2,2-Tetrachloroethane	12.556	83	639	3.81	ug/l #	94
76) 1,2,3-Trichloropropane	12.483	75	12641	102.61	ug/l #	100
78) n-propylbenzene	12.672	91	9059	8.65	ug/l	99
80) 1,3,5-Trimethylbenzene	12.812	105	10673	14.81	ug/l	98
81) trans-1,4-Dichloro-2-b...	12.483	75	12641	183.56	ug/l #	12
82) 4-Chlorotoluene	12.812	91	1629	2.69	ug/l #	43
83) tert-Butylbenzene	13.123	119	3789	6.14	ug/l #	63
84) 1,2,4-Trimethylbenzene	13.123	105	36962	50.81	ug/l	86
85) sec-Butylbenzene	13.257	105	7758	9.01	ug/l	84
86) p-Isopropyltoluene	13.373	119	4407	5.63	ug/l	88
89) n-Butylbenzene	13.696	91	4380	5.86	ug/l #	69
90) Hexachloroethane	13.977	117	858	8.17	ug/l #	13
95) Naphthalene	15.239	128	10668	22.52	ug/l	97

Data Path : Z:\voasrv\HPCHEM1\MSVOA_Y\Data\VY042221\
Data File : VY004593.D
Acq On : 22 Apr 2021 18:21
Operator : SY/MD
Sample : M2119-01
Misc : 5.05G/5ML/MSVOA_Y/SOIL
ALS Vial : 23 Sample Multiplier: 1

Instrument :
MSVOA_Y
ClientSampled :

Quant Time: Apr 23 09:23:10 2021
Quant Method : Z:\voasrv\HPCHEM1\MSVOA_Y\methods\82Y041221S.M
Quant Title : SW846 8260
QLast Update : Tue Apr 13 03:38:02 2021
Response via : Initial Calibration

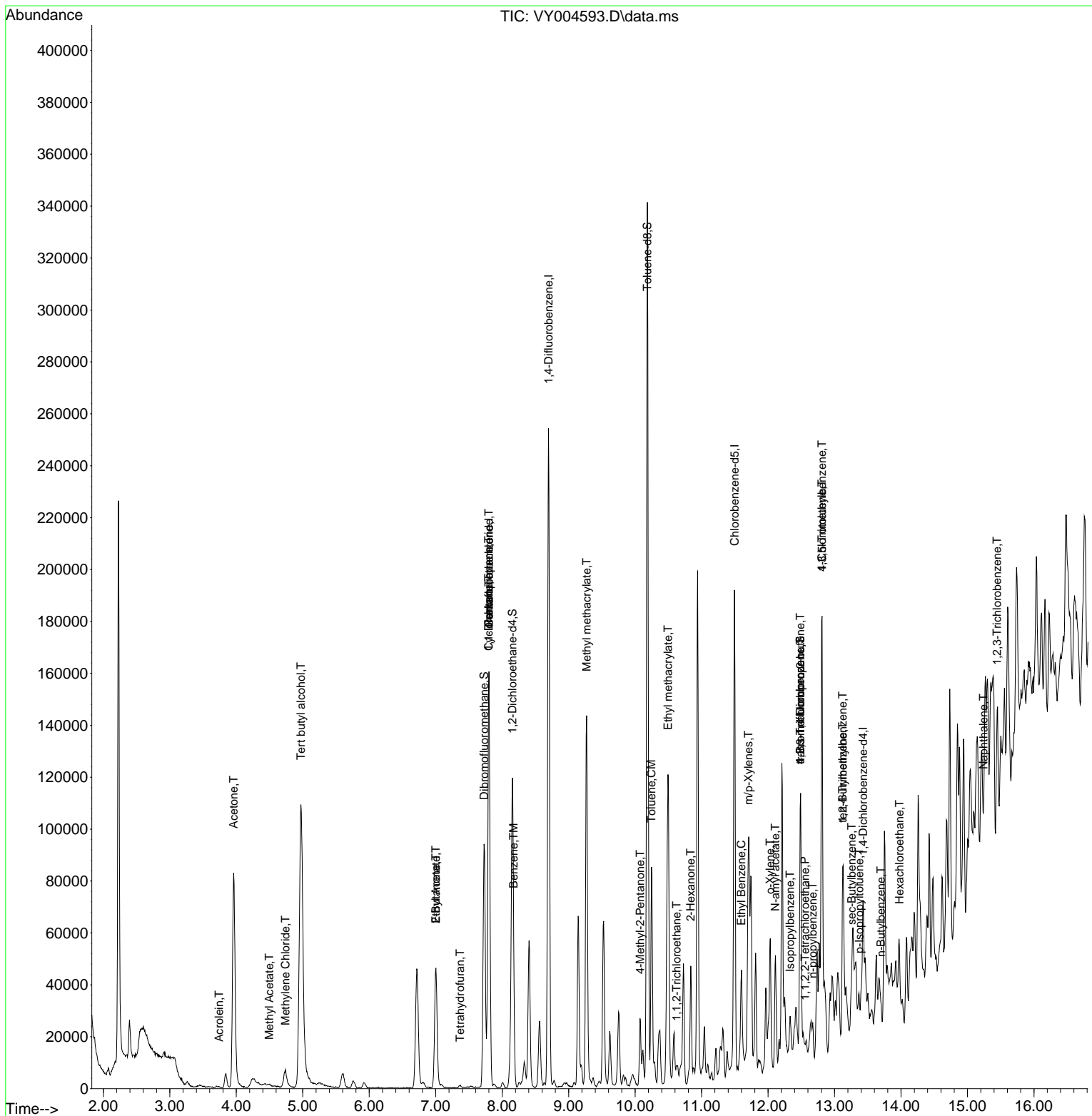
Compound	R.T.	QIon	Response	Conc	Units	Dev(Min)
96) 1,2,3-Trichlorobenzene	15.446	180	3889	20.23	ug/l #	12

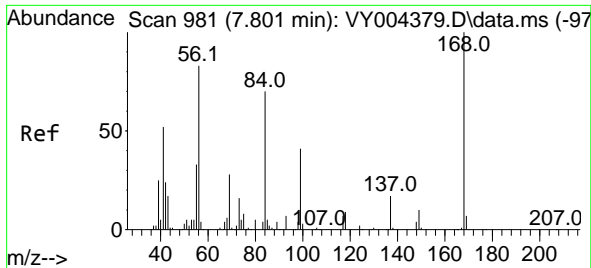
(#) = qualifier out of range (m) = manual integration (+) = signals summed

Data Path : Z:\voasrv\HPCHEM1\MSVOA_Y\Data\VY042221\
 Data File : VY004593.D
 Acq On : 22 Apr 2021 18:21
 Operator : SY/MD
 Sample : M2119-01
 Misc : 5.05G/5ML/MSVOA_Y/SOIL
 ALS Vial : 23 Sample Multiplier: 1

Instrument :
 MSVOA_Y
 ClientSampled :

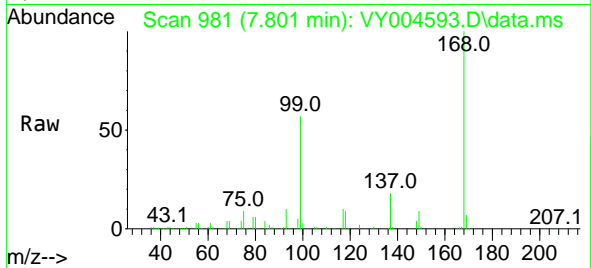
Quant Time: Apr 23 09:23:10 2021
 Quant Method : Z:\voasrv\HPCHEM1\MSVOA_Y\methods\82Y041221S.M
 Quant Title : SW846 8260
 QLast Update : Tue Apr 13 03:38:02 2021
 Response via : Initial Calibration



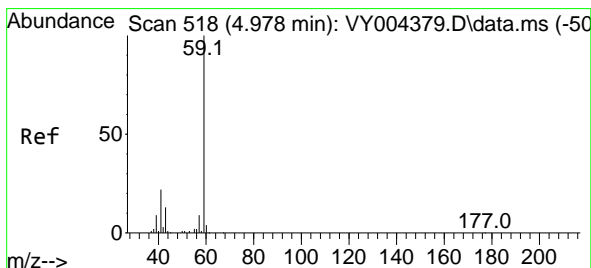
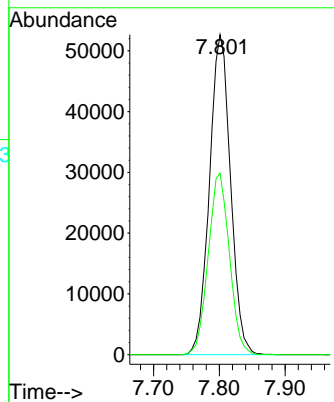
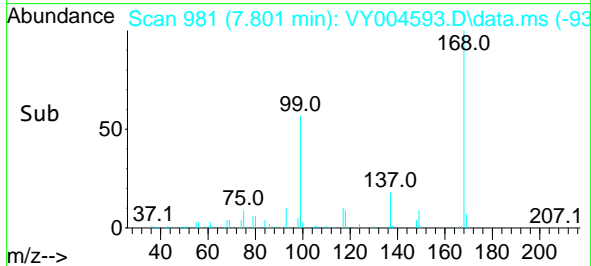


#1
 Pentafluorobenzene
 Concen: 50.00 ug/l
 RT: 7.801 min Scan# 981
 Delta R.T. -0.000 min
 Lab File: VY004593.D
 Acq: 22 Apr 2021 18:21

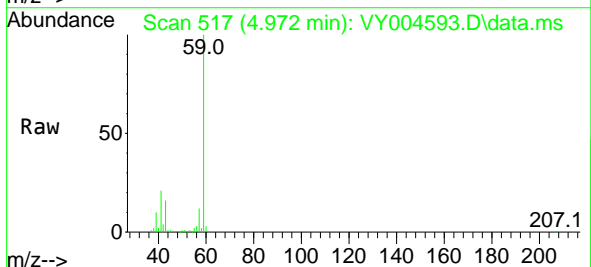
Instrument :
 MSVOA_Y
 ClientSampled :



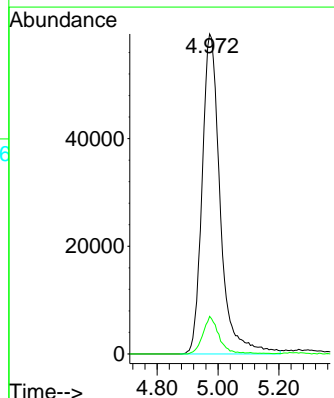
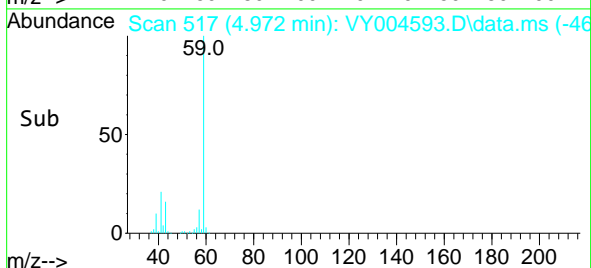
Tgt Ion:168 Resp: 117289
 Ion Ratio Lower Upper
 168 100
 99 56.7 45.5 68.3

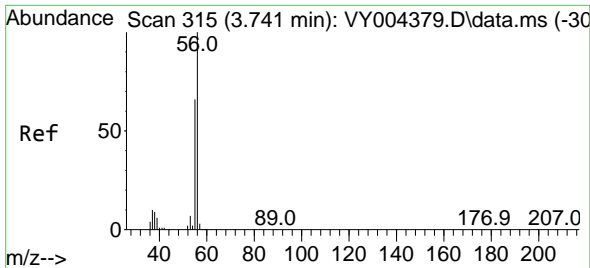


#11
 Tert butyl alcohol
 Concen: 1909.38 ug/l
 RT: 4.972 min Scan# 517
 Delta R.T. -0.006 min
 Lab File: VY004593.D
 Acq: 22 Apr 2021 18:21



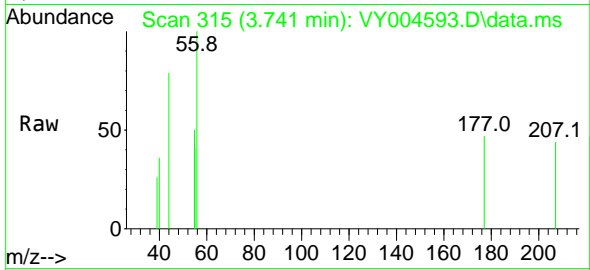
Tgt Ion: 59 Resp: 245219
 Ion Ratio Lower Upper
 59 100
 57 10.4 8.1 12.1



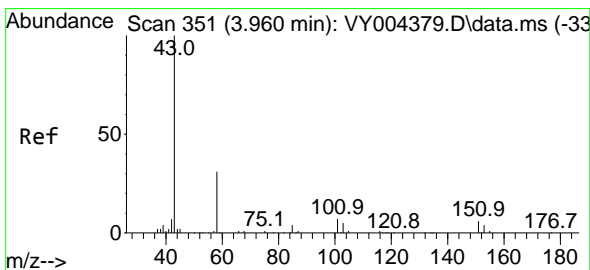
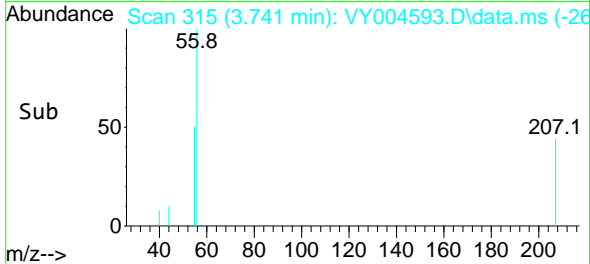
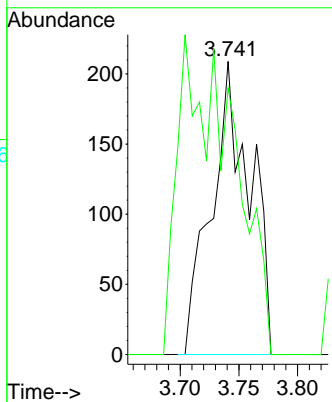


#13
 Acrolein
 Concen: 3.36 ug/l
 RT: 3.741 min Scan# 315
 Delta R.T. 0.000 min
 Lab File: VY004593.D
 Acq: 22 Apr 2021 18:21

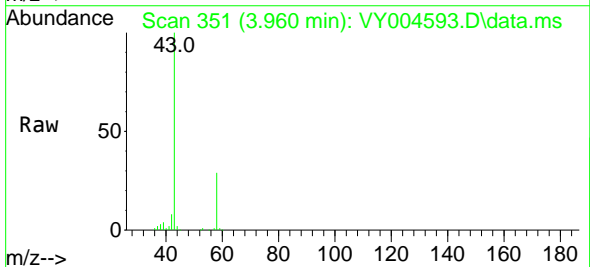
Instrument :
 MSVOA_Y
 ClientSampled :



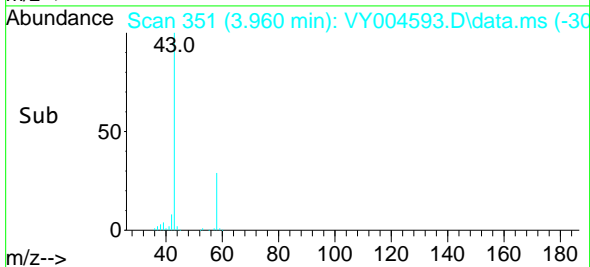
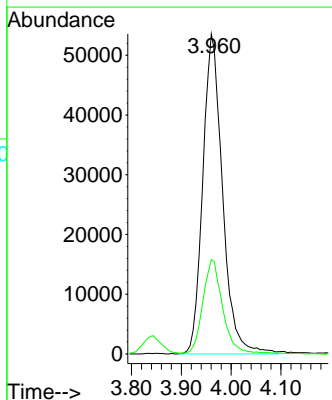
Tgt Ion: 56 Resp: 479
 Ion Ratio Lower Upper
 56 100
 55 0.0 55.4 83.2#

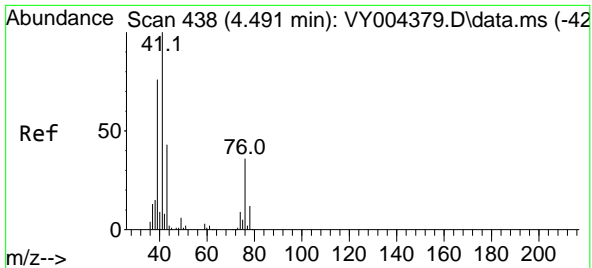


#16
 Acetone
 Concen: 556.37 ug/l
 RT: 3.960 min Scan# 351
 Delta R.T. 0.000 min
 Lab File: VY004593.D
 Acq: 22 Apr 2021 18:21



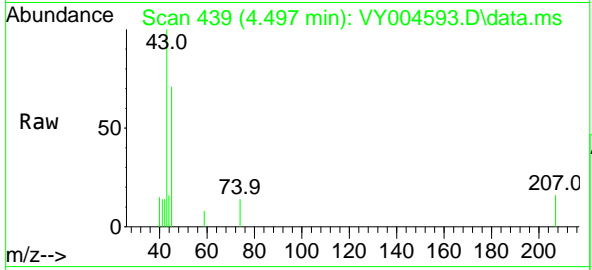
Tgt Ion: 43 Resp: 147367
 Ion Ratio Lower Upper
 43 100
 58 29.3 24.6 37.0



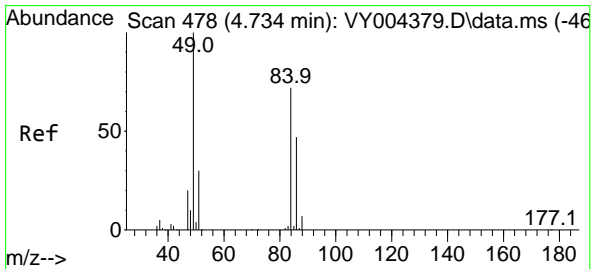
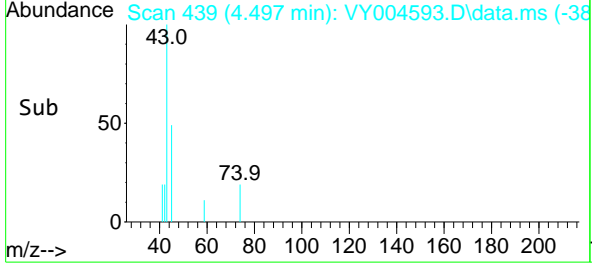
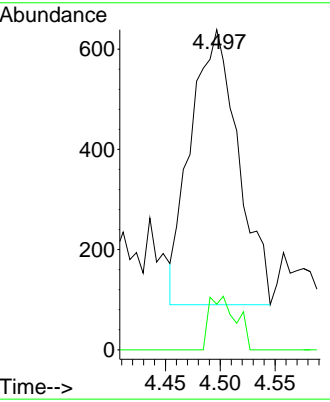


#18
 Methyl Acetate
 Concen: 1.82 ug/l
 RT: 4.497 min Scan# 439
 Delta R.T. 0.006 min
 Lab File: VY004593.D
 Acq: 22 Apr 2021 18:21

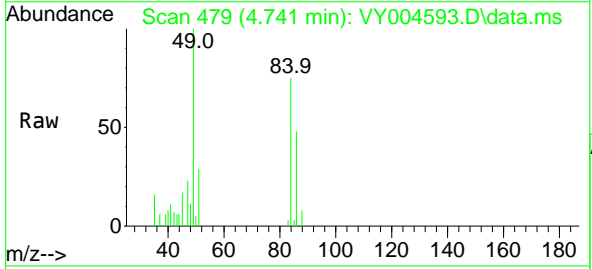
Instrument :
 MSVOA_Y
 ClientSampled :



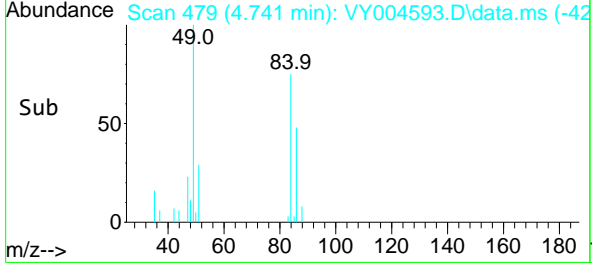
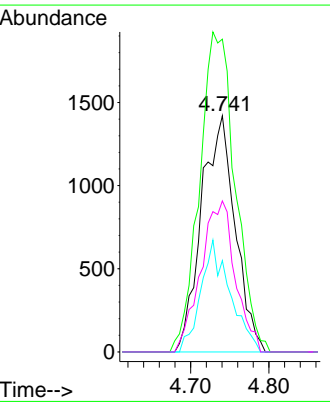
Tgt Ion: 43 Resp: 1653
 Ion Ratio Lower Upper
 43 100
 74 11.1 17.2 25.8#

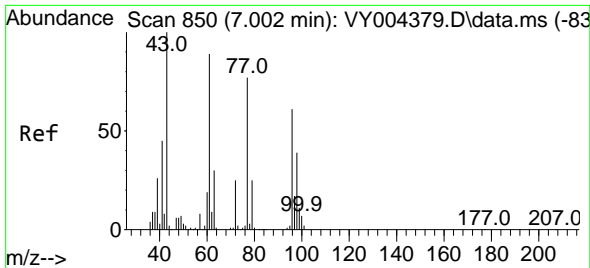


#20
 Methylene Chloride
 Concen: 3.38 ug/l
 RT: 4.741 min Scan# 479
 Delta R.T. 0.006 min
 Lab File: VY004593.D
 Acq: 22 Apr 2021 18:21



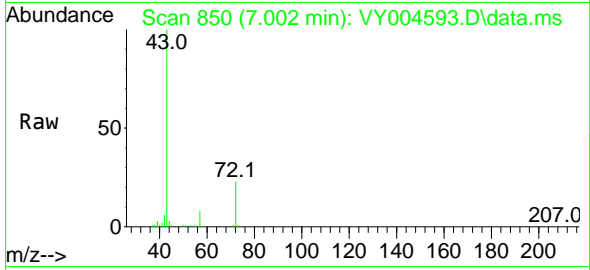
Tgt Ion: 84 Resp: 4253
 Ion Ratio Lower Upper
 84 100
 49 132.5 111.2 166.8
 51 38.7 33.4 50.2
 86 63.9 52.7 79.1



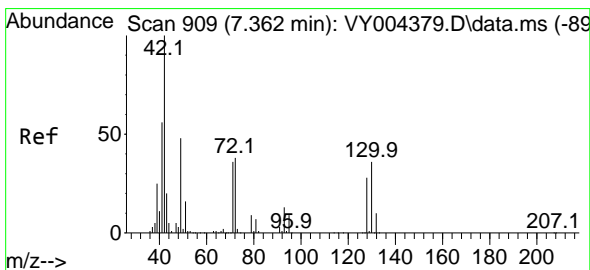
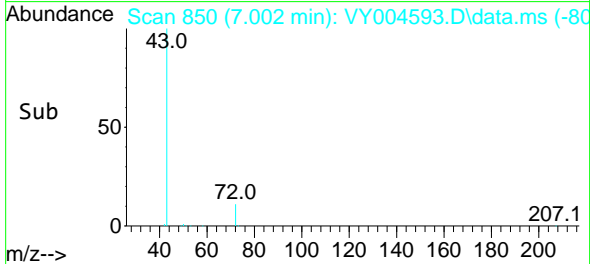
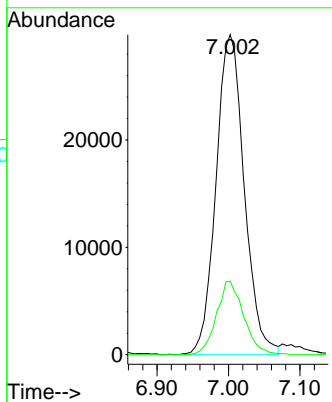


#25
 2-Butanone
 Concen: 164.79 ug/l
 RT: 7.002 min Scan# 850
 Delta R.T. 0.000 min
 Lab File: VY004593.D
 Acq: 22 Apr 2021 18:21

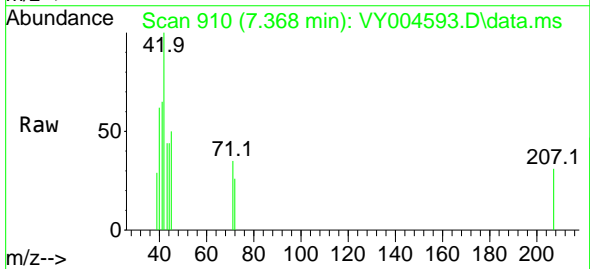
Instrument :
 MSVOA_Y
 ClientSampled :



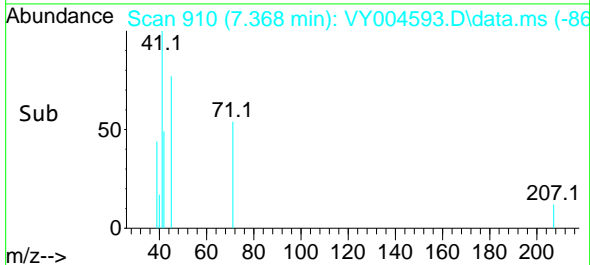
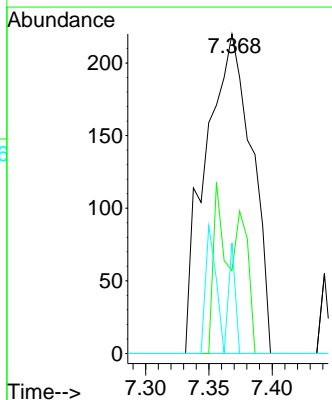
Tgt Ion: 43 Resp: 81804
 Ion Ratio Lower Upper
 43 100
 72 23.0 20.2 30.2

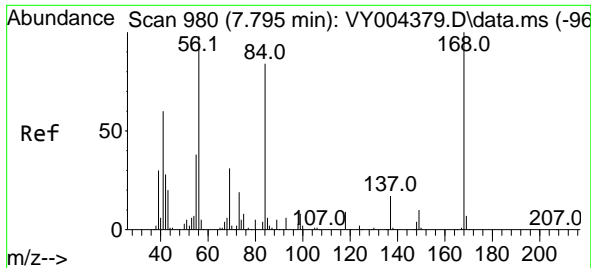


#29
 Tetrahydrofuran
 Concen: 1.57 ug/l
 RT: 7.368 min Scan# 910
 Delta R.T. 0.006 min
 Lab File: VY004593.D
 Acq: 22 Apr 2021 18:21



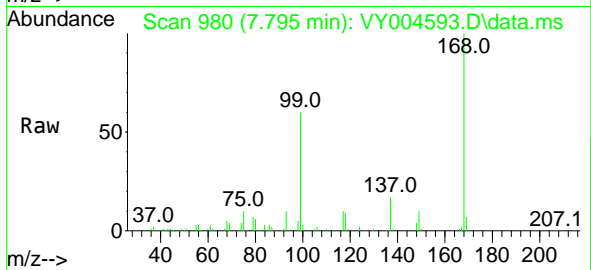
Tgt Ion: 42 Resp: 556
 Ion Ratio Lower Upper
 42 100
 72 15.6 31.0 46.4#
 71 9.2 28.8 43.2#



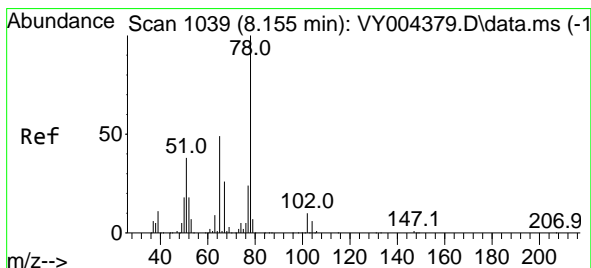
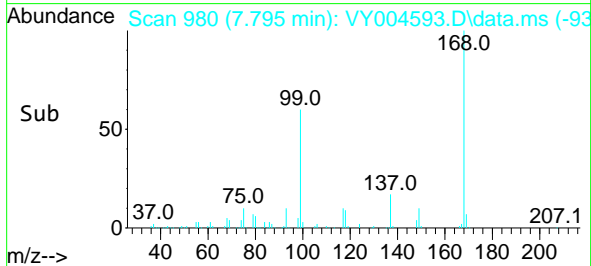
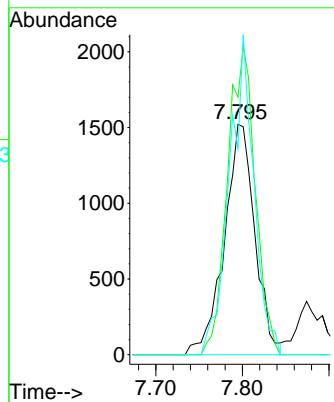


#31
 Cyclohexane
 Concen: 1.56 ug/l
 RT: 7.795 min Scan# 980
 Delta R.T. 0.000 min
 Lab File: VY004593.D
 Acq: 22 Apr 2021 18:21

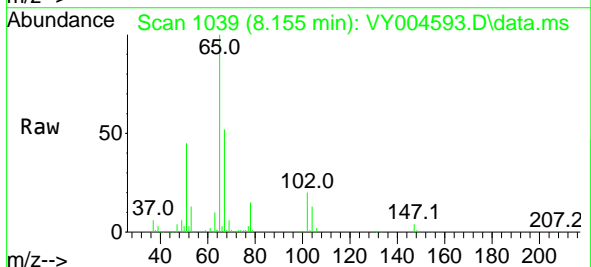
Instrument :
 MSVOA_Y
 ClientSampled :



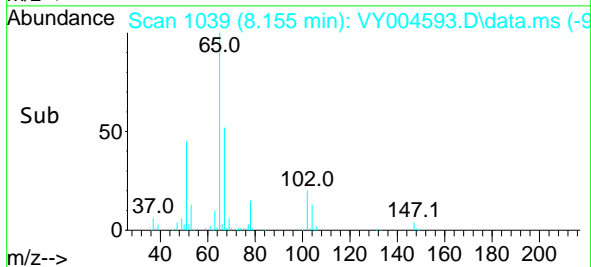
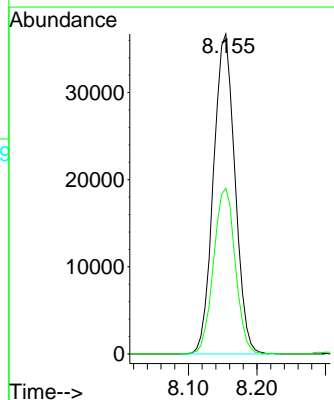
Tgt Ion: 56 Resp: 3732
 Ion Ratio Lower Upper
 56 100
 69 111.8 25.8 38.6#
 84 89.6 68.2 102.4

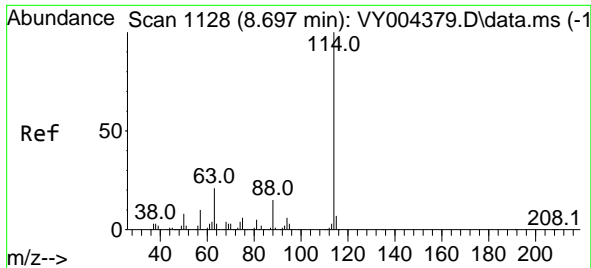


#33
 1,2-Dichloroethane-d4
 Concen: 61.46 ug/l
 RT: 8.155 min Scan# 1039
 Delta R.T. 0.000 min
 Lab File: VY004593.D
 Acq: 22 Apr 2021 18:21



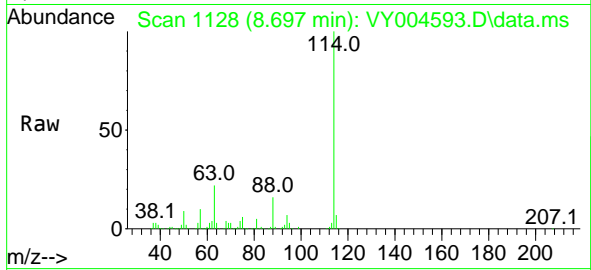
Tgt Ion: 65 Resp: 80094
 Ion Ratio Lower Upper
 65 100
 67 52.3 0.0 106.4



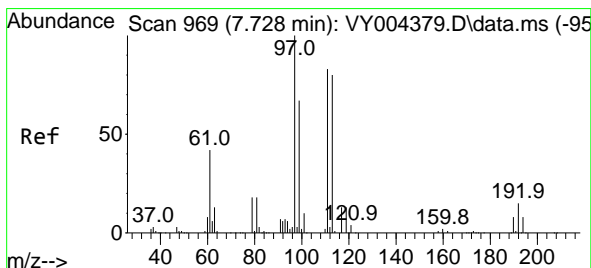
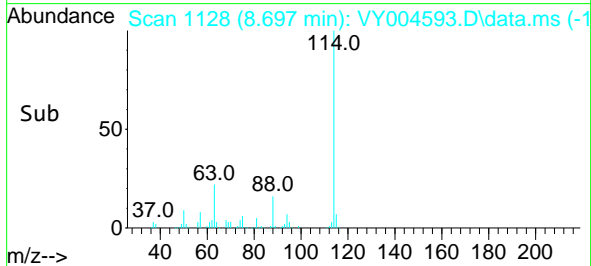
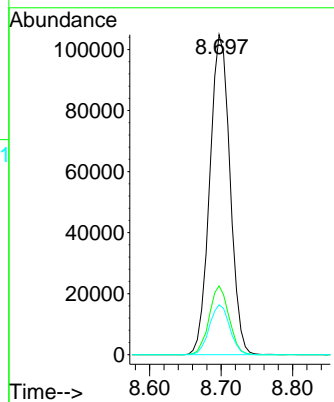


#34
 1,4-Difluorobenzene
 Concen: 50.00 ug/l
 RT: 8.697 min Scan# 1128
 Delta R.T. 0.000 min
 Lab File: VY004593.D
 Acq: 22 Apr 2021 18:21

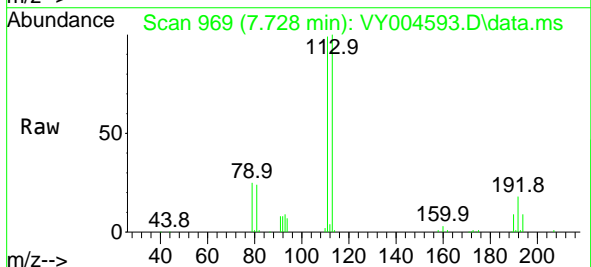
Instrument :
 MSVOA_Y
 ClientSampled :



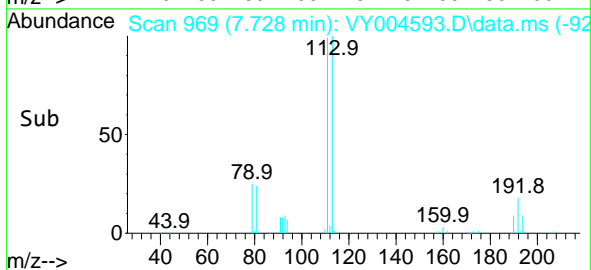
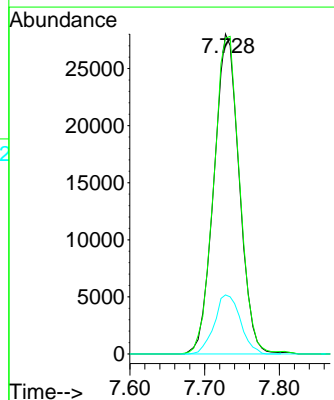
Tgt Ion:114 Resp: 206034
 Ion Ratio Lower Upper
 114 100
 63 21.5 0.0 42.4
 88 15.6 0.0 30.8

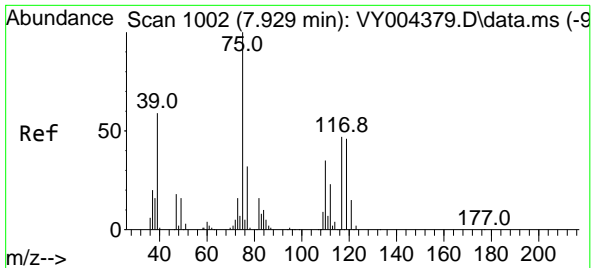


#35
 Dibromofluoromethane
 Concen: 57.54 ug/l
 RT: 7.728 min Scan# 969
 Delta R.T. 0.000 min
 Lab File: VY004593.D
 Acq: 22 Apr 2021 18:21



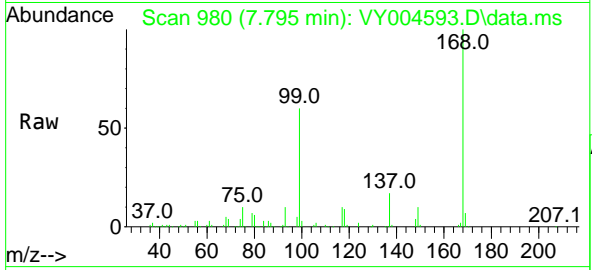
Tgt Ion:113 Resp: 65793
 Ion Ratio Lower Upper
 113 100
 111 101.8 82.6 123.8
 192 19.0 16.1 24.1



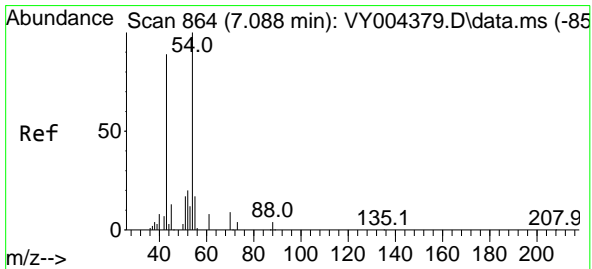
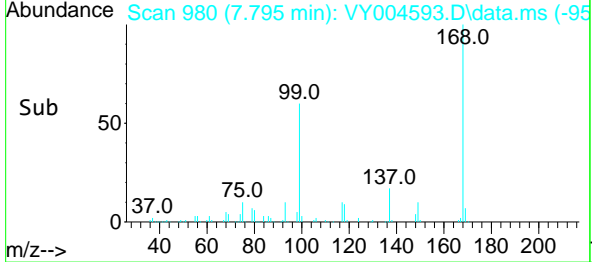
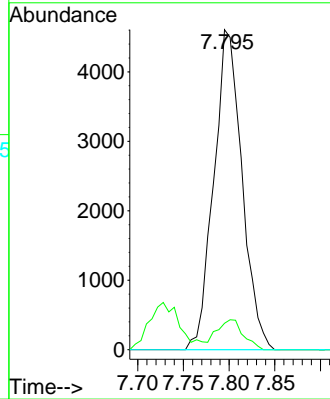


#36
 1,1-Dichloropropene
 Concen: 4.83 ug/l
 RT: 7.795 min Scan# 980
 Delta R.T. -0.134 min
 Lab File: VY004593.D
 Acq: 22 Apr 2021 18:21

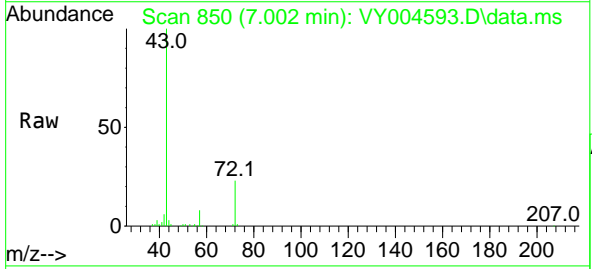
Instrument :
 MSVOA_Y
 ClientSampled :



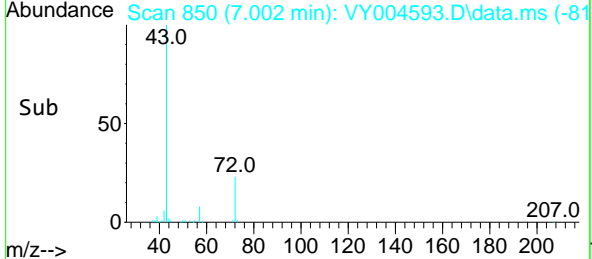
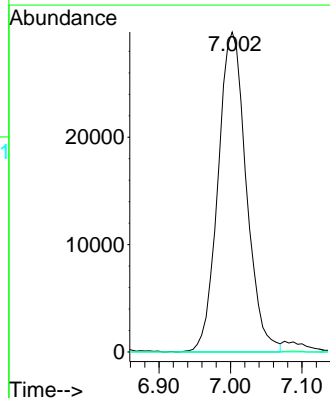
Tgt Ion: 75 Resp: 9879
 Ion Ratio Lower Upper
 75 100
 110 8.7 17.3 51.7#
 77 0.0 24.3 36.5#

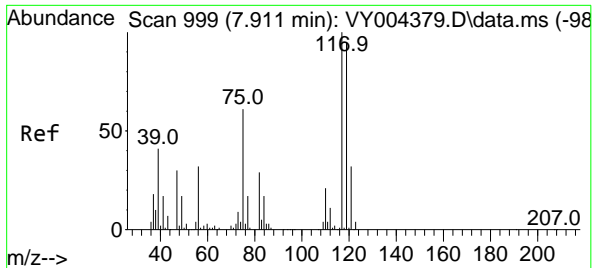


#37
 Ethyl Acetate
 Concen: 62.05 ug/l
 RT: 7.002 min Scan# 850
 Delta R.T. -0.085 min
 Lab File: VY004593.D
 Acq: 22 Apr 2021 18:21



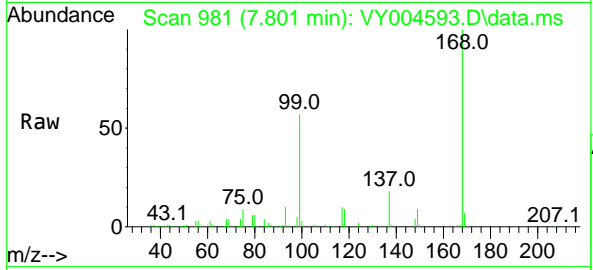
Tgt Ion: 43 Resp: 81804
 Ion Ratio Lower Upper
 43 100
 61 0.0 10.4 15.6#
 70 0.0 7.5 11.3#



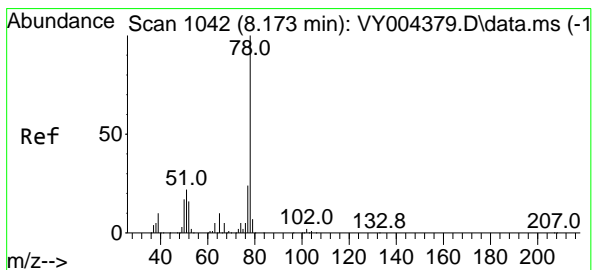
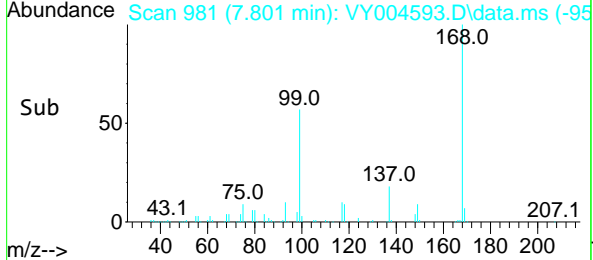
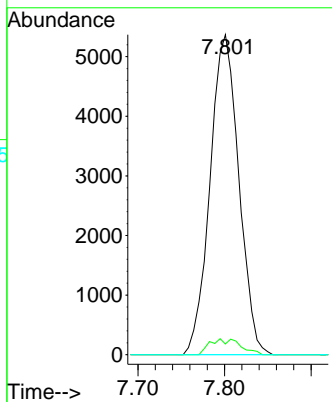


#38
 Carbon Tetrachloride
 Concen: 7.01 ug/l
 RT: 7.801 min Scan# 981
 Delta R.T. -0.110 min
 Lab File: VY004593.D
 Acq: 22 Apr 2021 18:21

Instrument :
 MSVOA_Y
 ClientSampled :

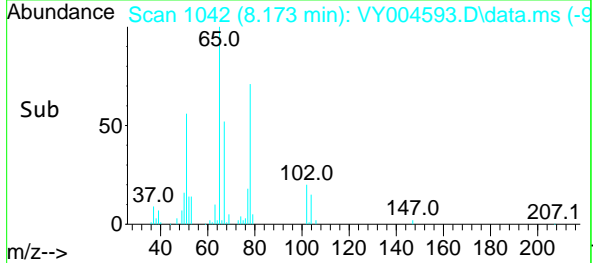
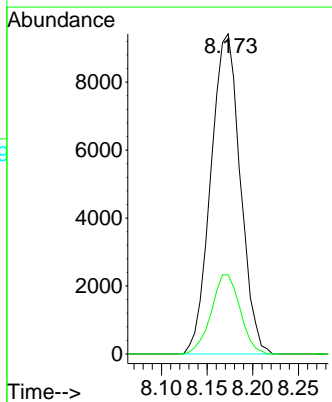
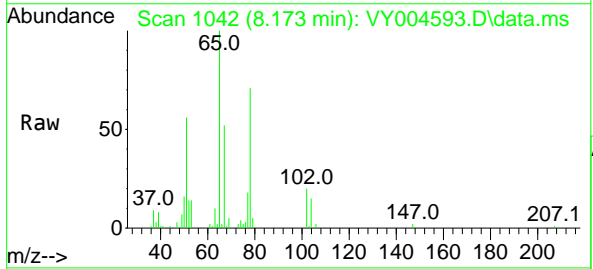


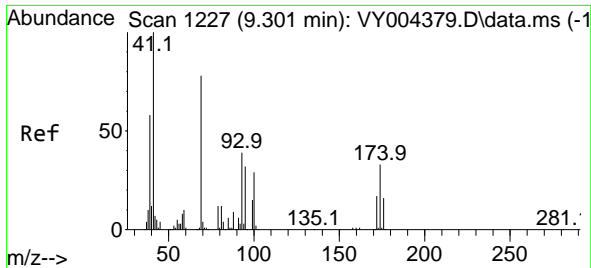
Tgt Ion	Resp	Lower	Upper
117	12407		
117	100		
119	3.4	75.8	113.8#
121	0.0	25.3	37.9#



#40
 Benzene
 Concen: 3.67 ug/l
 RT: 8.173 min Scan# 1042
 Delta R.T. 0.000 min
 Lab File: VY004593.D
 Acq: 22 Apr 2021 18:21

Tgt Ion	Resp	Lower	Upper
78	21096		
78	100		
77	24.7	19.4	29.0

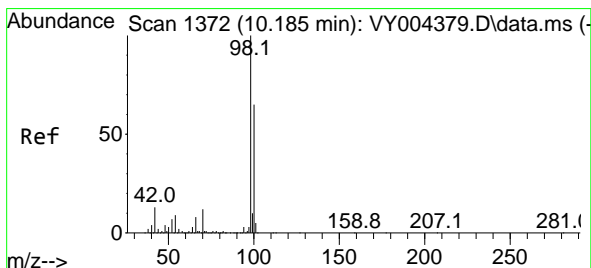
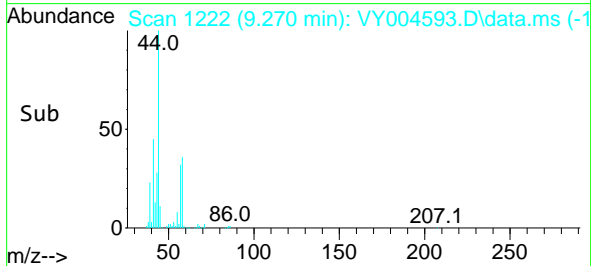
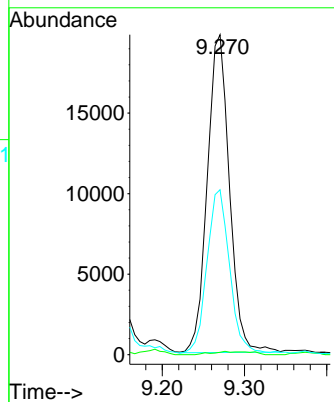
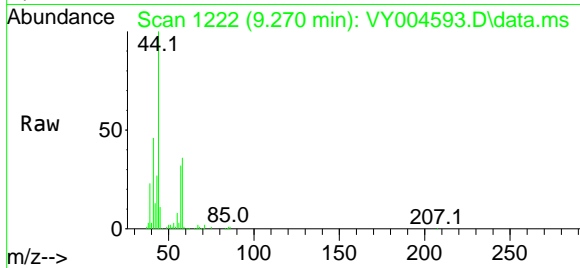




#48
 Methyl methacrylate
 Concen: 32.11 ug/l
 RT: 9.270 min Scan# 1222
 Delta R.T. -0.030 min
 Lab File: VY004593.D
 Acq: 22 Apr 2021 18:21

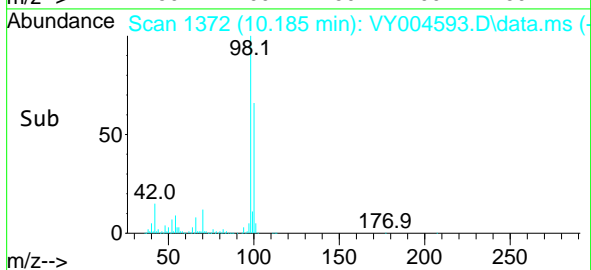
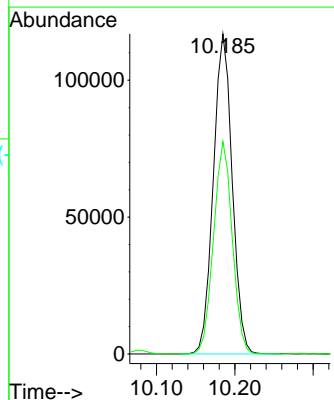
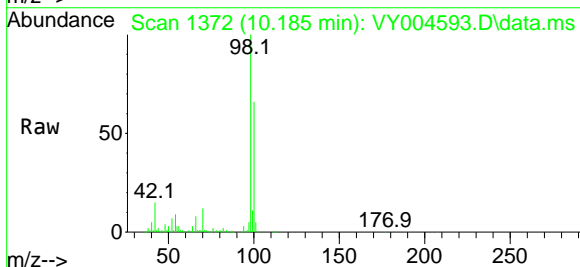
Instrument :
 MSVOA_Y
 ClientSampled :

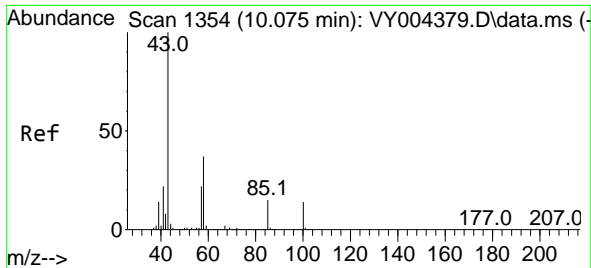
Tgt Ion	Resp	Lower	Upper
41	36959		
41	100		
69	1.2	62.6	94.0#
39	52.3	47.2	70.8



#50
 Toluene-d8
 Concen: 40.30 ug/l
 RT: 10.185 min Scan# 1372
 Delta R.T. 0.000 min
 Lab File: VY004593.D
 Acq: 22 Apr 2021 18:21

Tgt Ion	Resp	Lower	Upper
98	195998		
98	100		
100	65.7	51.8	77.6

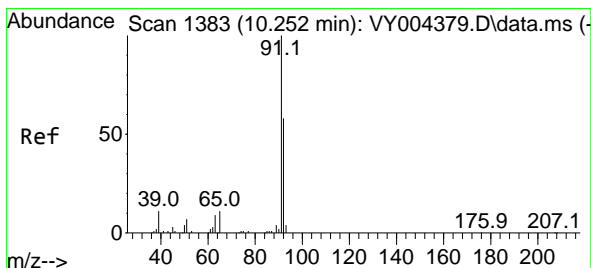
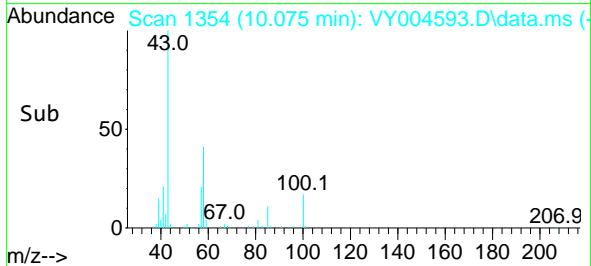
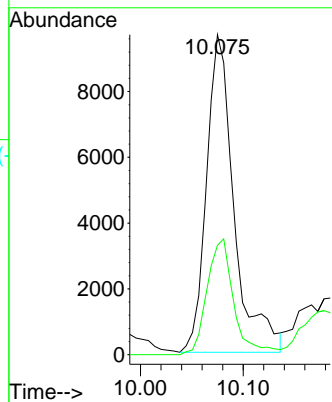
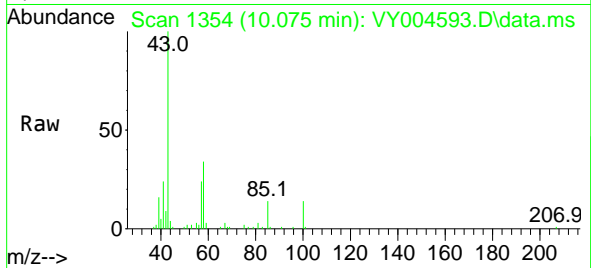




#51
 4-Methyl-2-Pentanone
 Concen: 14.07 ug/l
 RT: 10.075 min Scan# 1354
 Delta R.T. 0.000 min
 Lab File: VY004593.D
 Acq: 22 Apr 2021 18:21

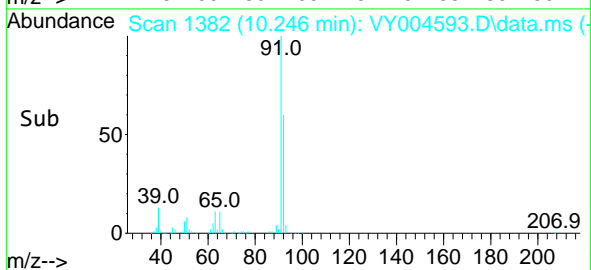
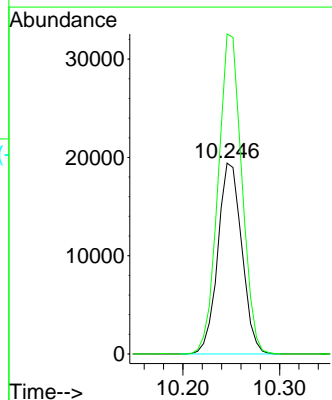
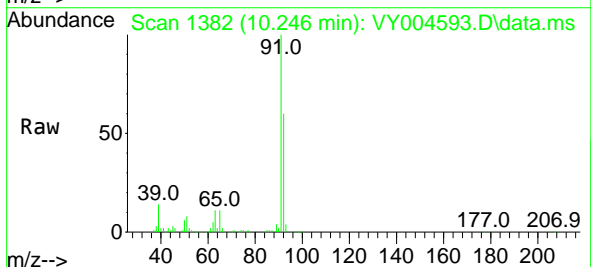
Instrument :
 MSVOA_Y
 ClientSampled :

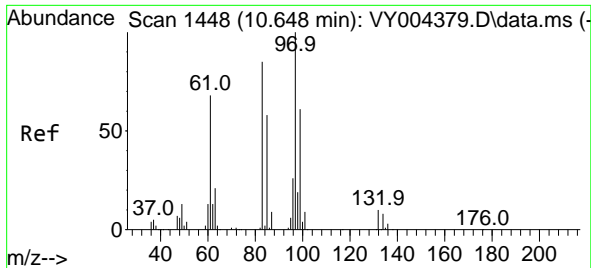
Tgt Ion: 43 Resp: 18060
 Ion Ratio Lower Upper
 43 100
 58 35.3 29.2 43.8



#52
 Toluene
 Concen: 8.98 ug/l
 RT: 10.246 min Scan# 1382
 Delta R.T. -0.006 min
 Lab File: VY004593.D
 Acq: 22 Apr 2021 18:21

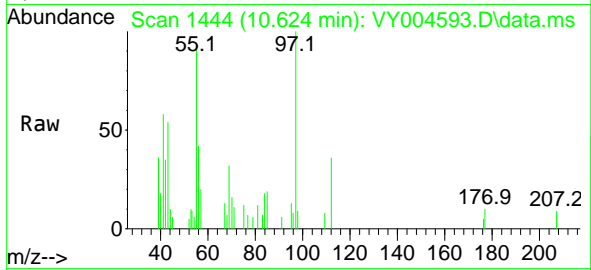
Tgt Ion: 92 Resp: 33432
 Ion Ratio Lower Upper
 92 100
 91 165.9 137.8 206.6





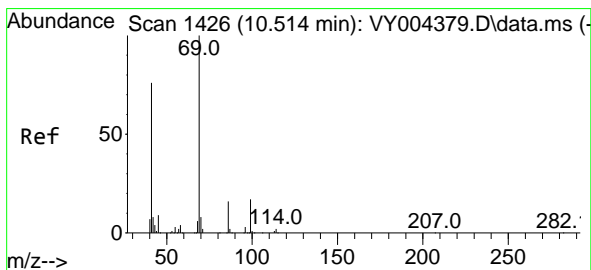
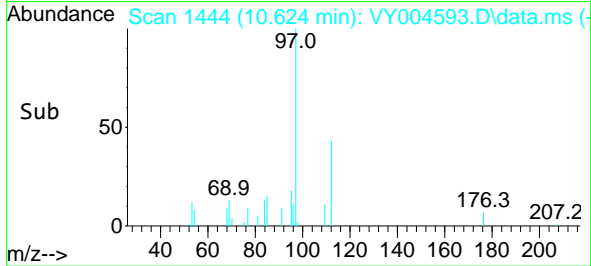
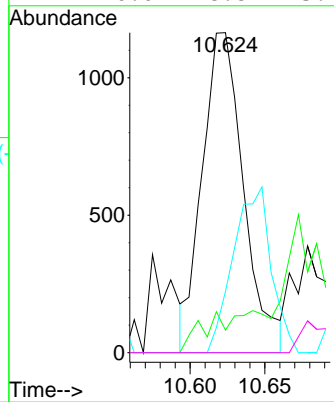
#55
 1,1,2-Trichloroethane
 Concen: 2.01 ug/l
 RT: 10.624 min Scan# 1444
 Delta R.T. -0.024 min
 Lab File: VY004593.D
 Acq: 22 Apr 2021 18:21

Instrument :
 MSVOA_Y
 ClientSampled :

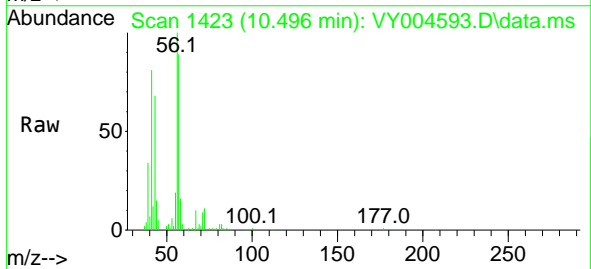


Tgt Ion: 97 Resp: 2234

Ion	Ratio	Lower	Upper
97	100		
83	7.8	68.4	102.6#
85	21.3	46.2	69.4#
99	0.0	48.8	73.2#

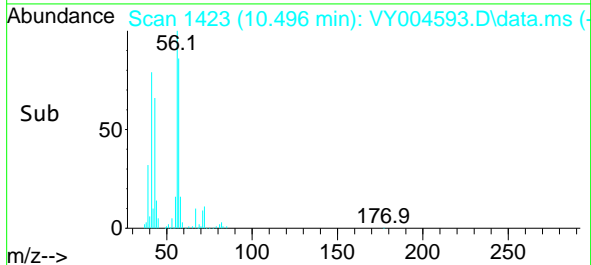
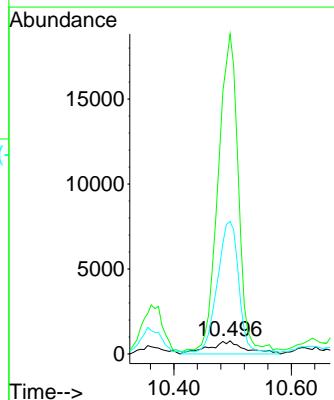


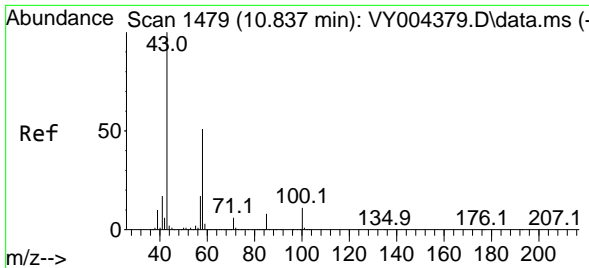
#56
 Ethyl methacrylate
 Concen: 1.99 ug/l
 RT: 10.496 min Scan# 1423
 Delta R.T. -0.018 min
 Lab File: VY004593.D
 Acq: 22 Apr 2021 18:21



Tgt Ion: 69 Resp: 3222

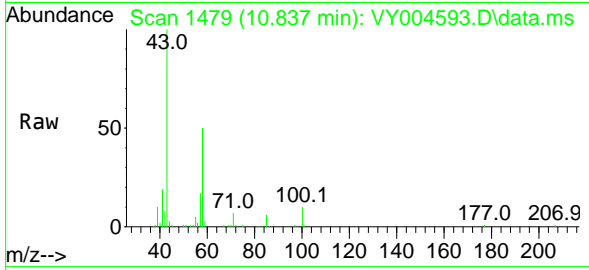
Ion	Ratio	Lower	Upper
69	100		
41	1373.9	59.2	88.8#
39	597.9	31.0	46.6#



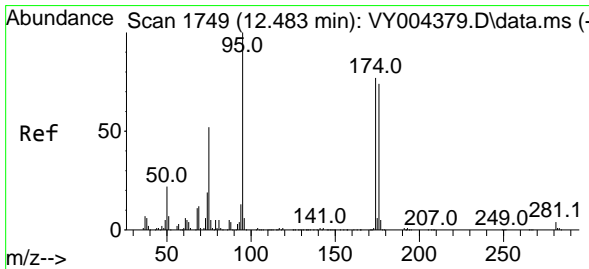
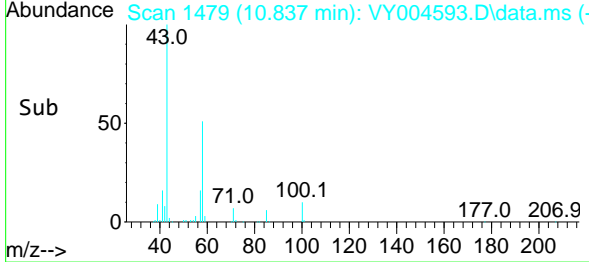
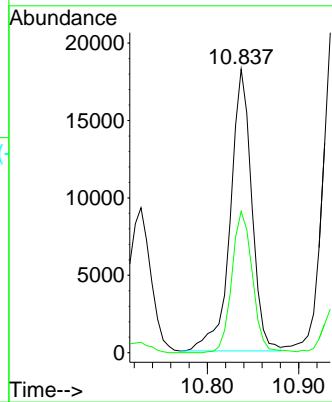


#59
 2-Hexanone
 Concen: 34.48 ug/l
 RT: 10.837 min Scan# 1479
 Delta R.T. 0.000 min
 Lab File: VY004593.D
 Acq: 22 Apr 2021 18:21

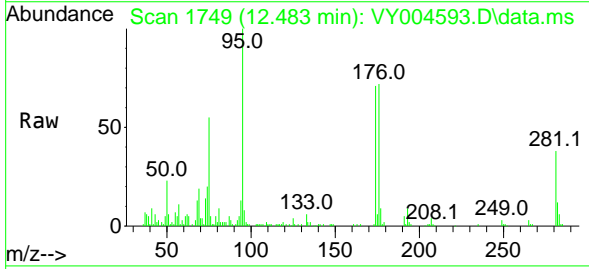
Instrument :
 MSVOA_Y
 ClientSampled :



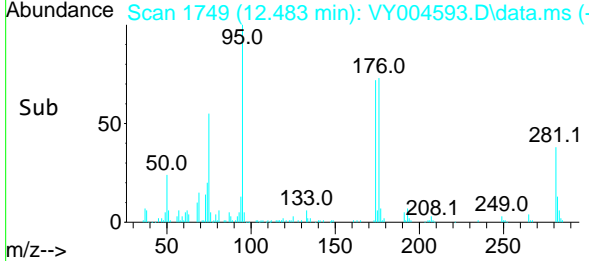
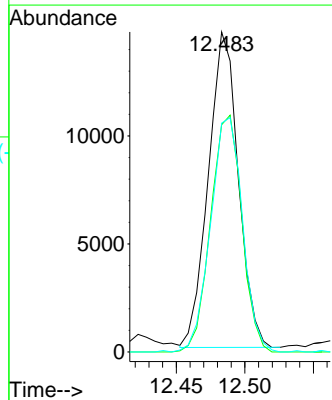
Tgt Ion: 43 Resp: 29672
 Ion Ratio Lower Upper
 43 100
 58 48.3 25.4 76.4

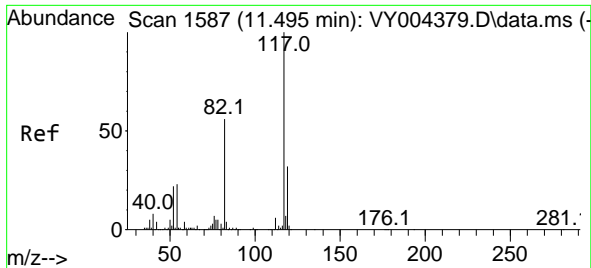


#62
 4-Bromofluorobenzene
 Concen: 13.46 ug/l
 RT: 12.483 min Scan# 1749
 Delta R.T. 0.000 min
 Lab File: VY004593.D
 Acq: 22 Apr 2021 18:21



Tgt Ion: 95 Resp: 22221
 Ion Ratio Lower Upper
 95 100
 174 77.9 0.0 162.4
 176 79.1 0.0 156.0

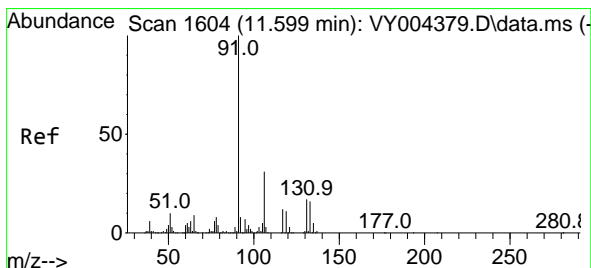
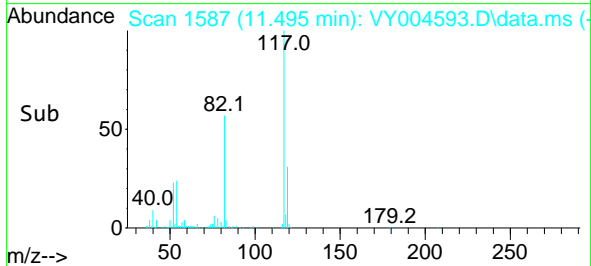
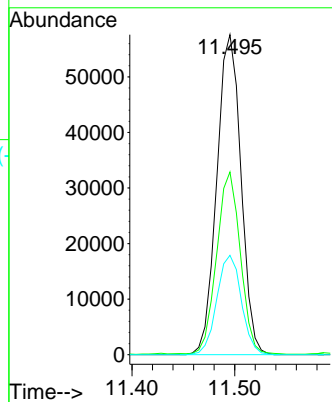
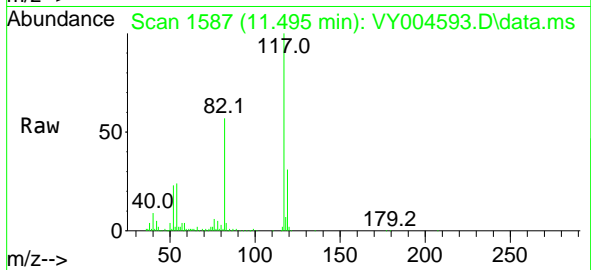




#63
 Chlorobenzene-d5
 Concen: 50.00 ug/l
 RT: 11.495 min Scan# 1587
 Delta R.T. 0.000 min
 Lab File: VY004593.D
 Acq: 22 Apr 2021 18:21

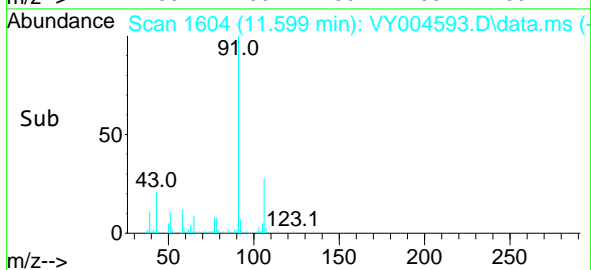
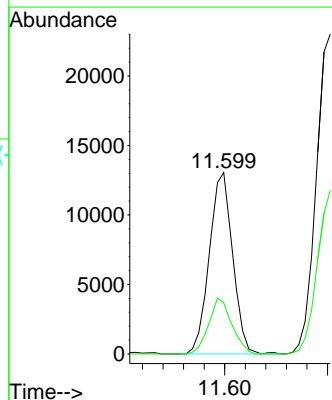
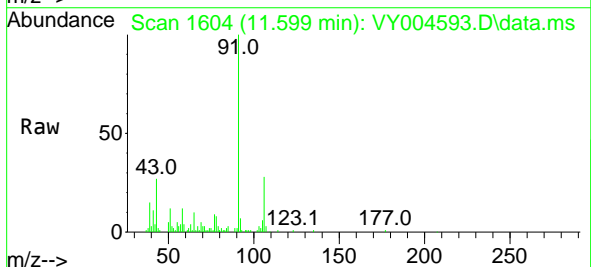
Instrument :
 MSVOA_Y
 ClientSampled :

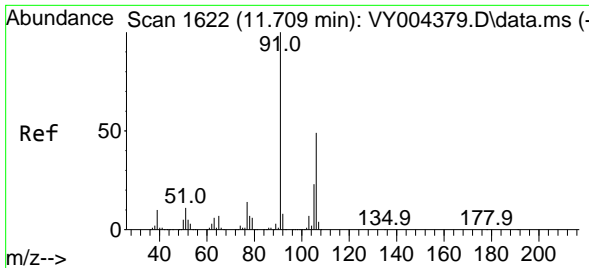
Tgt Ion	Resp	Lower	Upper
117	94013		
82	56.8	44.9	67.3
119	31.0	25.4	38.0



#67
 Ethyl Benzene
 Concen: 5.73 ug/l
 RT: 11.599 min Scan# 1604
 Delta R.T. 0.000 min
 Lab File: VY004593.D
 Acq: 22 Apr 2021 18:21

Tgt Ion	Resp	Lower	Upper
91	20558		
106	28.2	25.1	37.7

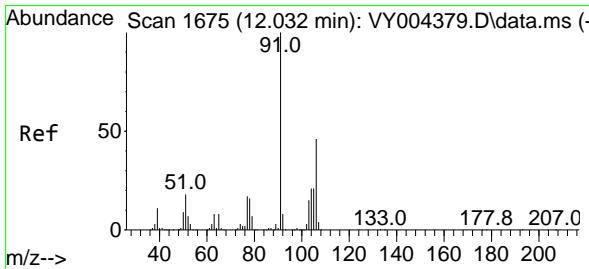
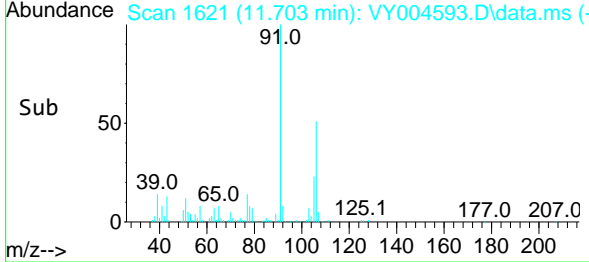
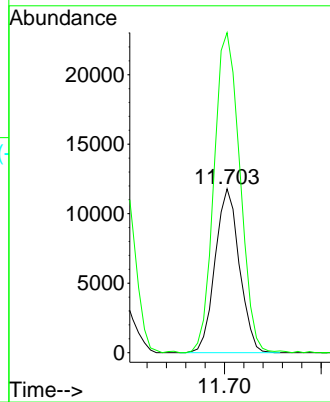
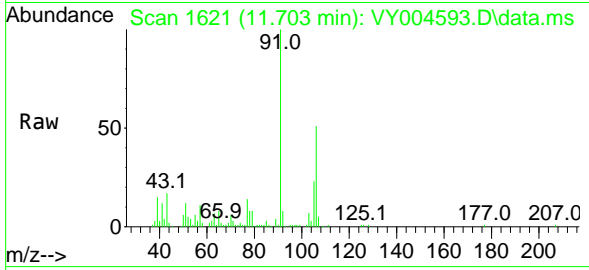




#68
 m/p-Xylenes
 Concen: 15.40 ug/l
 RT: 11.703 min Scan# 1621
 Delta R.T. -0.006 min
 Lab File: VY004593.D
 Acq: 22 Apr 2021 18:21

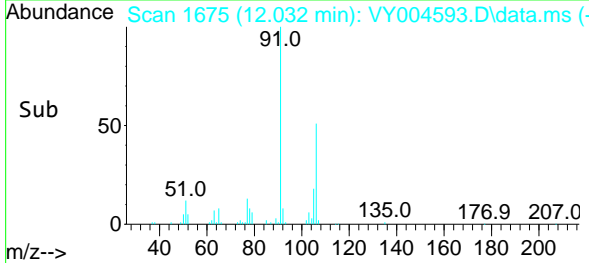
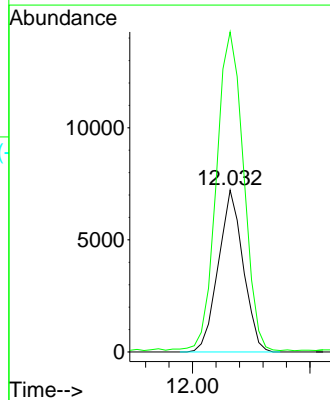
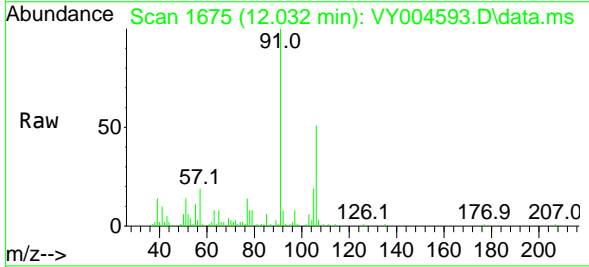
Instrument :
 MSVOA_Y
 ClientSampled :

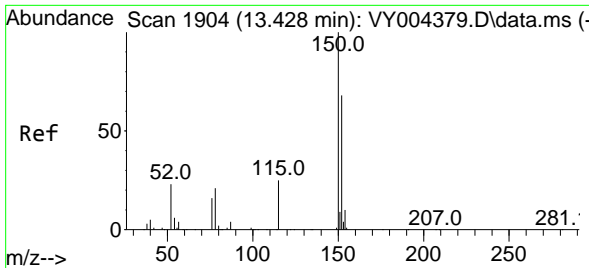
Tgt Ion:106 Resp: 20543
 Ion Ratio Lower Upper
 106 100
 91 208.2 163.2 244.8



#69
 o-Xylene
 Concen: 8.49 ug/l
 RT: 12.032 min Scan# 1675
 Delta R.T. 0.000 min
 Lab File: VY004593.D
 Acq: 22 Apr 2021 18:21

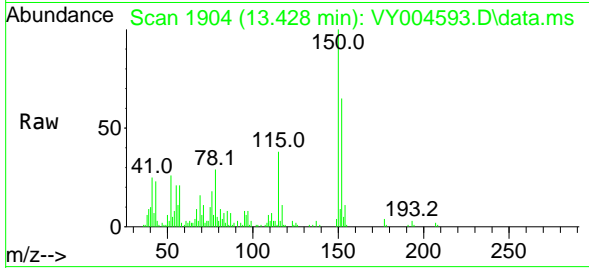
Tgt Ion:106 Resp: 10610
 Ion Ratio Lower Upper
 106 100
 91 214.4 107.4 322.2



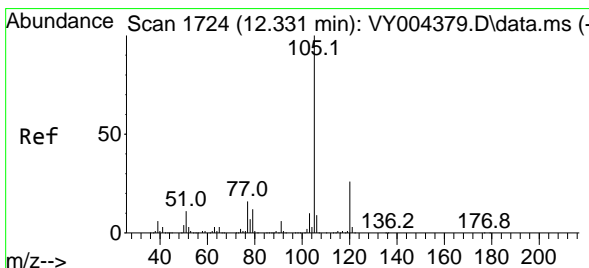
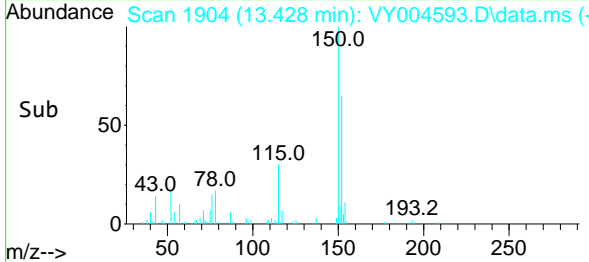
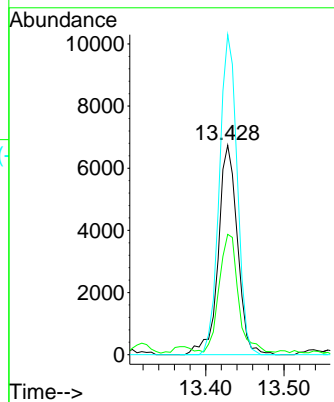


#72
 1,4-Dichlorobenzene-d4
 Concen: 50.00 ug/l
 RT: 13.428 min Scan# 1904
 Delta R.T. 0.000 min
 Lab File: VY004593.D
 Acq: 22 Apr 2021 18:21

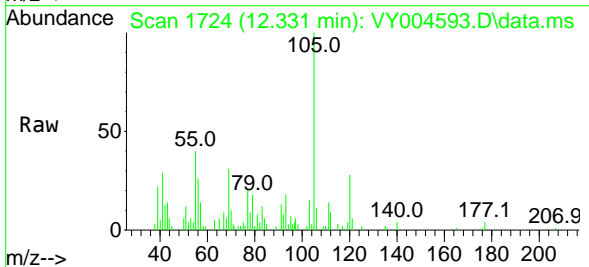
Instrument :
 MSVOA_Y
 ClientSampled :



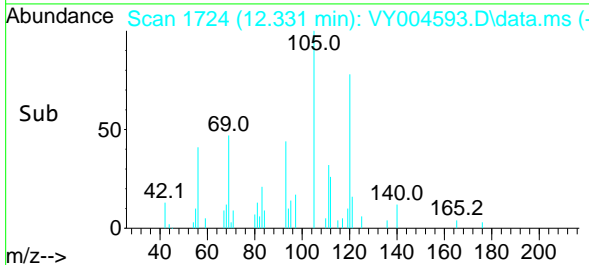
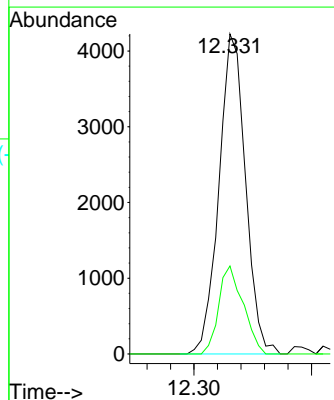
Tgt Ion:152 Resp: 11478
 Ion Ratio Lower Upper
 152 100
 115 56.0 29.6 88.8
 150 142.2 0.0 348.4

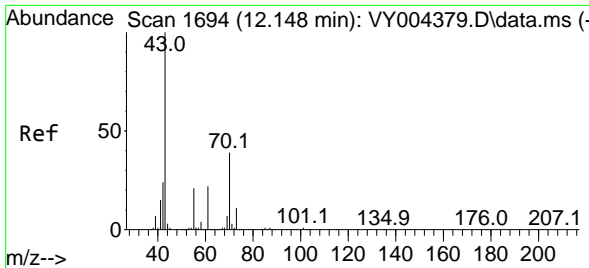


#73
 Isopropylbenzene
 Concen: 7.48 ug/l
 RT: 12.331 min Scan# 1724
 Delta R.T. 0.000 min
 Lab File: VY004593.D
 Acq: 22 Apr 2021 18:21



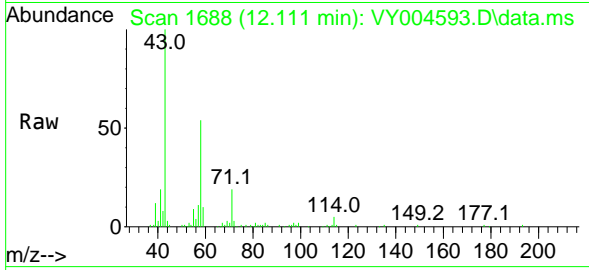
Tgt Ion:105 Resp: 6631
 Ion Ratio Lower Upper
 105 100
 120 25.2 13.2 39.5





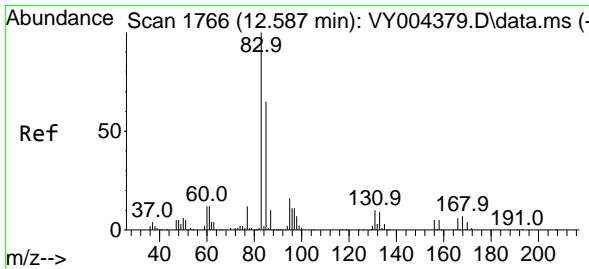
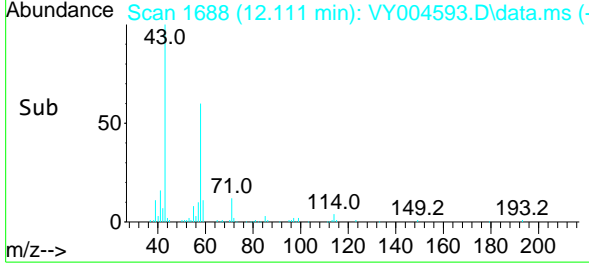
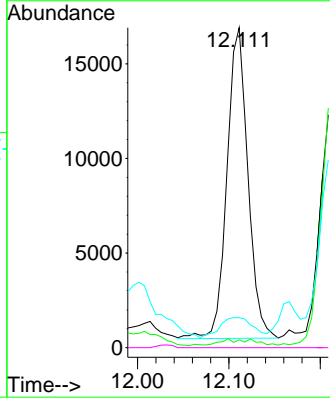
#74
 N-amy1 acetate
 Concen: 87.64 ug/l
 RT: 12.111 min Scan# 1688
 Delta R.T. -0.037 min
 Lab File: VY004593.D
 Acq: 22 Apr 2021 18:21

Instrument :
 MSVOA_Y
 ClientSampled :

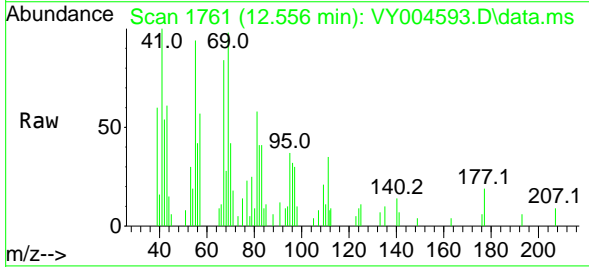


Tgt Ion: 43 Resp: 26171

Ion	Ratio	Lower	Upper
43	100		
70	0.0	30.4	45.6#
55	10.1	17.4	26.0#
61	0.0	18.2	27.2#

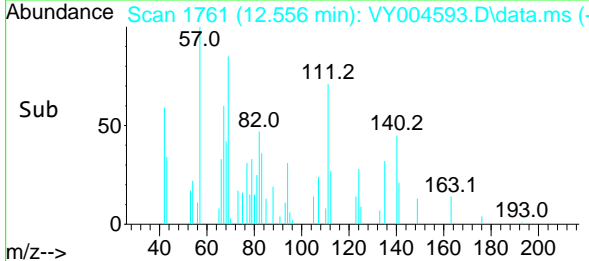
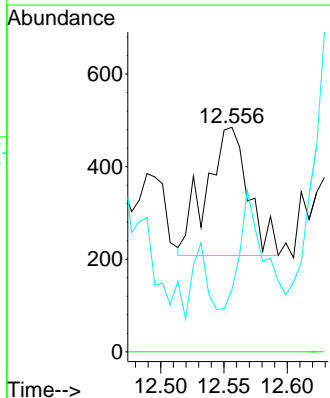


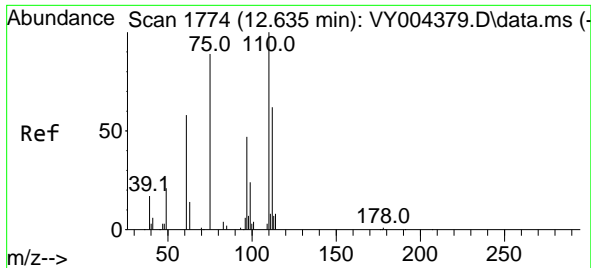
#75
 1,1,2,2-Tetrachloroethane
 Concen: 3.81 ug/l
 RT: 12.556 min Scan# 1761
 Delta R.T. -0.030 min
 Lab File: VY004593.D
 Acq: 22 Apr 2021 18:21



Tgt Ion: 83 Resp: 639

Ion	Ratio	Lower	Upper
83	100		
131	0.0	5.1	15.4#
85	65.1	31.6	94.8

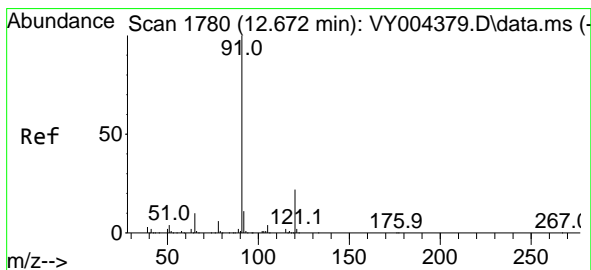
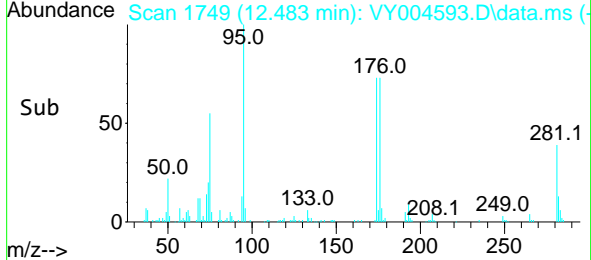
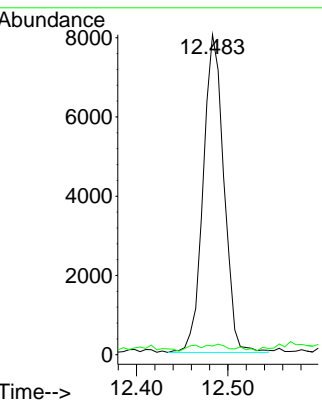
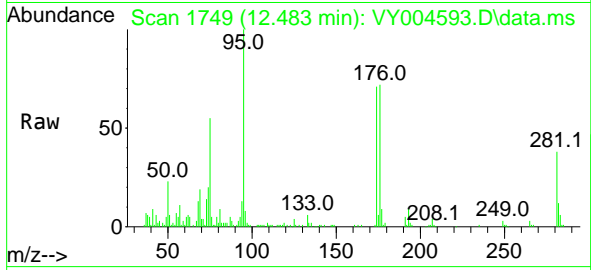




#76
 1,2,3-Trichloropropane
 Concen: 102.61 ug/l
 RT: 12.483 min Scan# 1749
 Delta R.T. -0.152 min
 Lab File: VY004593.D
 Acq: 22 Apr 2021 18:21

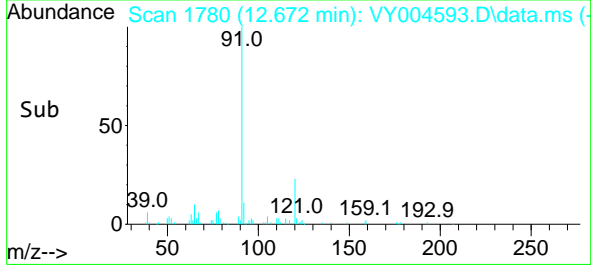
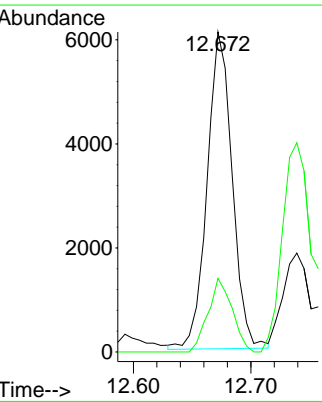
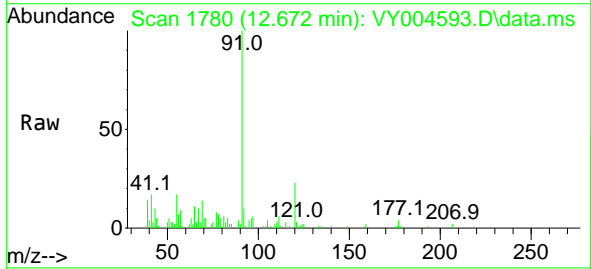
Instrument :
 MSVOA_Y
 ClientSampled :

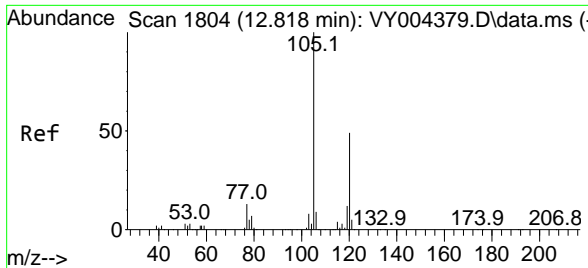
Tgt Ion: 75 Resp: 12641
 Ion Ratio Lower Upper
 75 100
 77 2.0 0.0 0.0#



#78
 n-propylbenzene
 Concen: 8.65 ug/l
 RT: 12.672 min Scan# 1780
 Delta R.T. 0.000 min
 Lab File: VY004593.D
 Acq: 22 Apr 2021 18:21

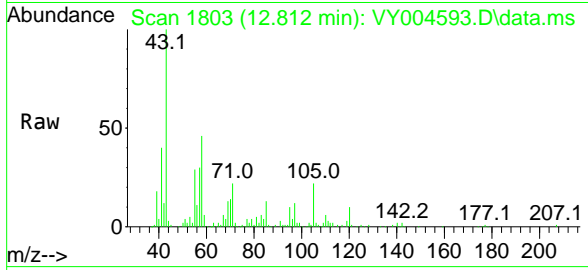
Tgt Ion: 91 Resp: 9059
 Ion Ratio Lower Upper
 91 100
 120 22.2 11.5 34.4



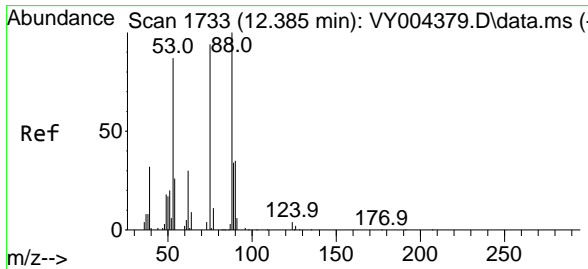
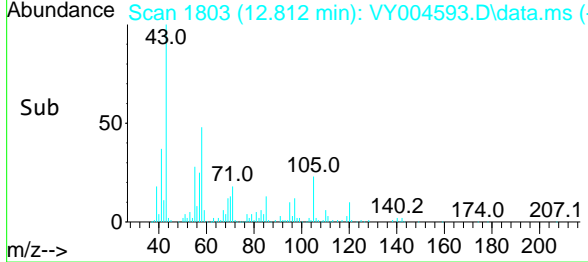
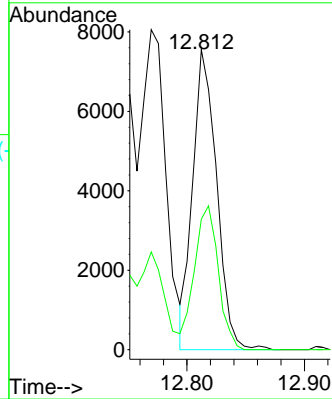


#80
 1,3,5-Trimethylbenzene
 Concen: 14.81 ug/l
 RT: 12.812 min Scan# 1803
 Delta R.T. -0.006 min
 Lab File: VY004593.D
 Acq: 22 Apr 2021 18:21

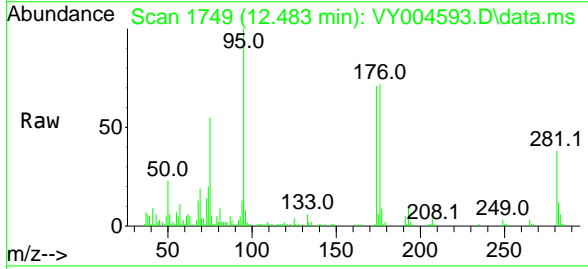
Instrument :
 MSVOA_Y
 ClientSampled :



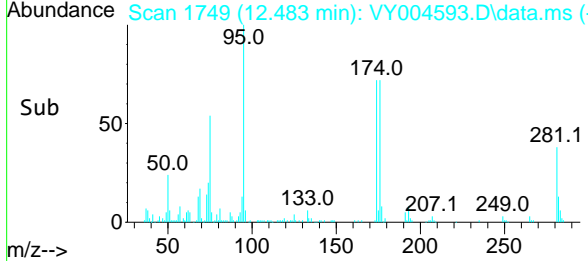
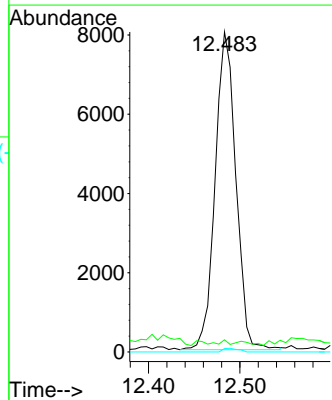
Tgt Ion:105 Resp: 10673
 Ion Ratio Lower Upper
 105 100
 120 47.9 24.6 74.0

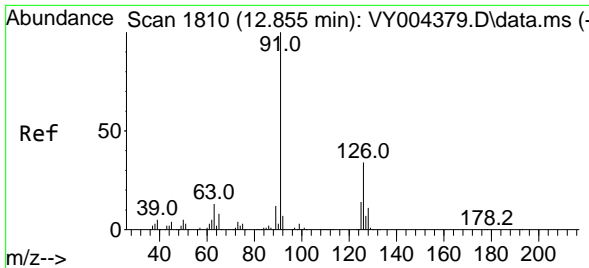


#81
 trans-1,4-Dichloro-2-butene
 Concen: 183.56 ug/l
 RT: 12.483 min Scan# 1749
 Delta R.T. 0.098 min
 Lab File: VY004593.D
 Acq: 22 Apr 2021 18:21



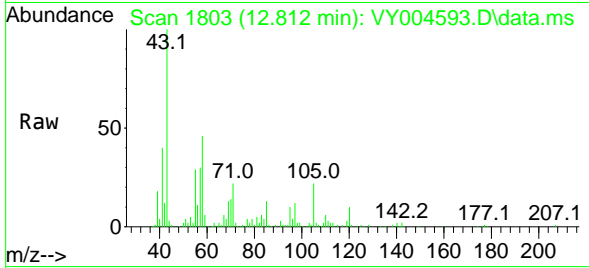
Tgt Ion: 75 Resp: 12641
 Ion Ratio Lower Upper
 75 100
 53 0.0 75.0 112.6#
 89 0.9 36.1 54.1#



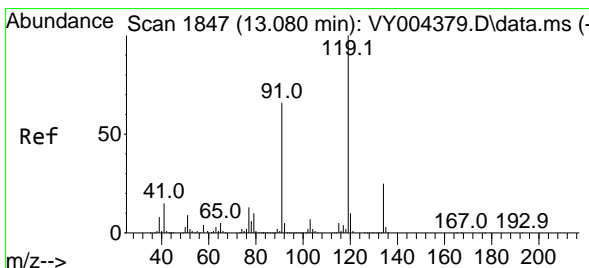
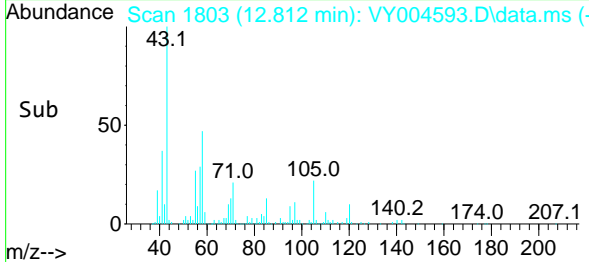
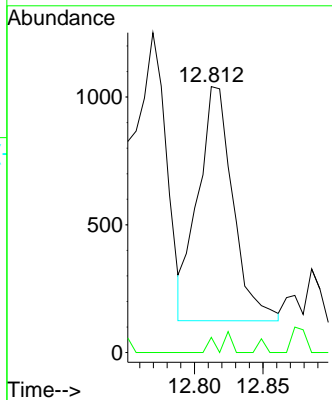


#82
 4-Chlorotoluene
 Concen: 2.69 ug/l
 RT: 12.812 min Scan# 1803
 Delta R.T. -0.043 min
 Lab File: VY004593.D
 Acq: 22 Apr 2021 18:21

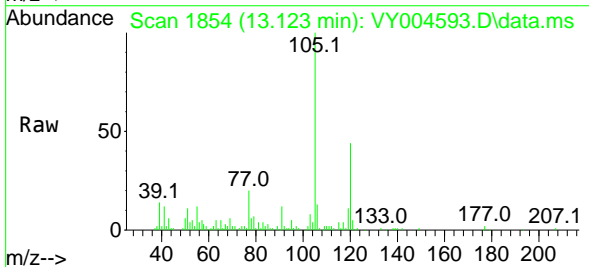
Instrument :
 MSVOA_Y
 ClientSampled :



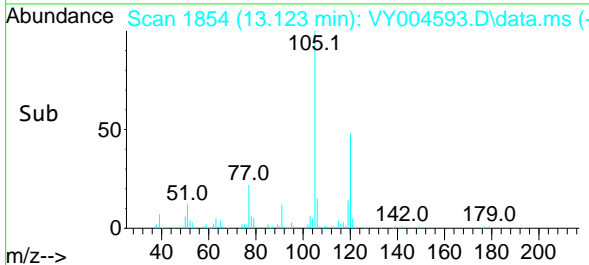
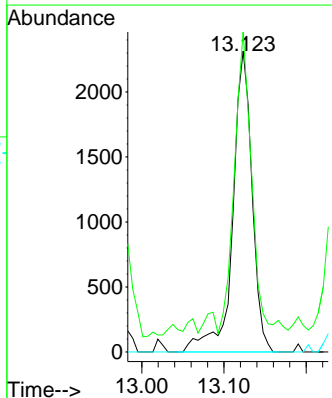
Tgt Ion: 91 Resp: 1629
 Ion Ratio Lower Upper
 91 100
 126 1.4 16.9 50.7#

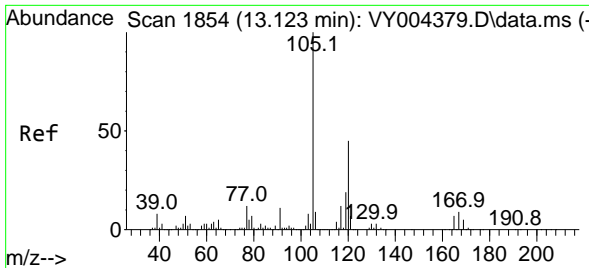


#83
 tert-Butylbenzene
 Concen: 6.14 ug/l
 RT: 13.123 min Scan# 1854
 Delta R.T. 0.043 min
 Lab File: VY004593.D
 Acq: 22 Apr 2021 18:21



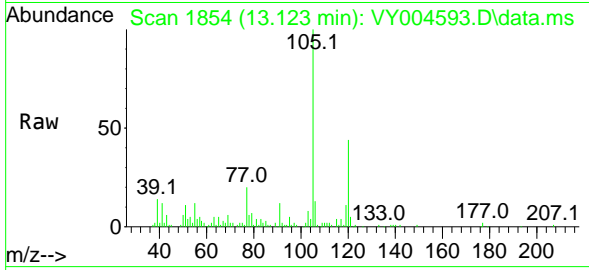
Tgt Ion: 119 Resp: 3789
 Ion Ratio Lower Upper
 119 100
 91 90.2 32.6 98.0
 134 0.0 12.9 38.6#



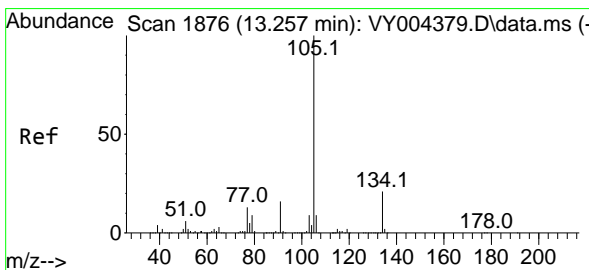
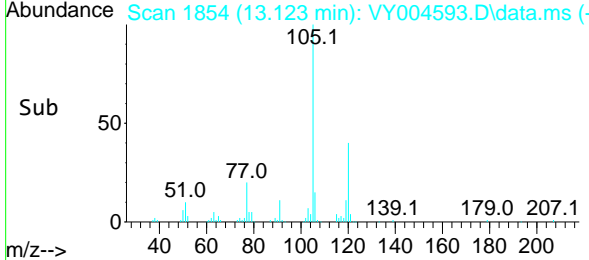
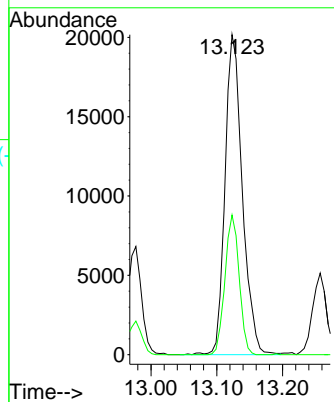


#84
 1,2,4-Trimethylbenzene
 Concen: 50.81 ug/l
 RT: 13.123 min Scan# 1854
 Delta R.T. 0.000 min
 Lab File: VY004593.D
 Acq: 22 Apr 2021 18:21

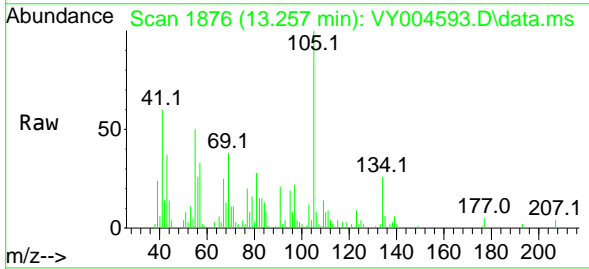
Instrument :
 MSVOA_Y
 ClientSampled :



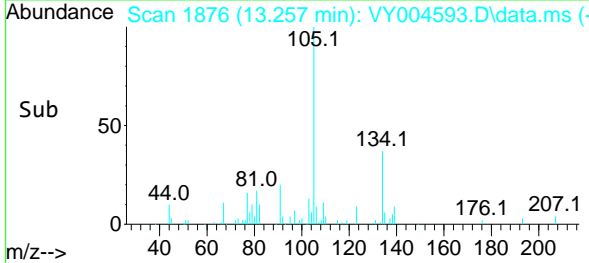
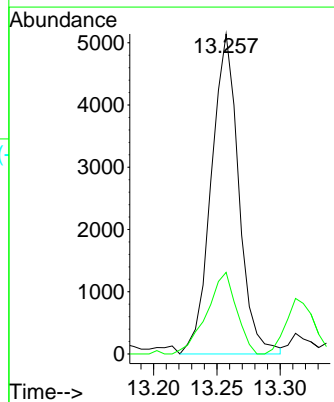
Tgt Ion:105 Resp: 36962
 Ion Ratio Lower Upper
 105 100
 120 35.8 22.4 67.3

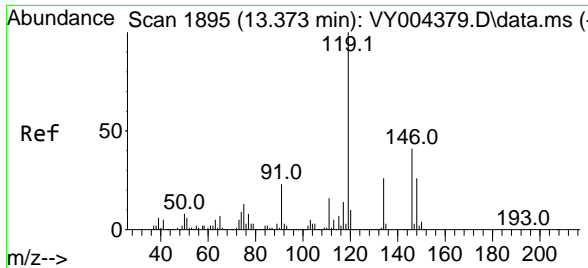


#85
 sec-Butylbenzene
 Concen: 9.01 ug/l
 RT: 13.257 min Scan# 1876
 Delta R.T. 0.000 min
 Lab File: VY004593.D
 Acq: 22 Apr 2021 18:21



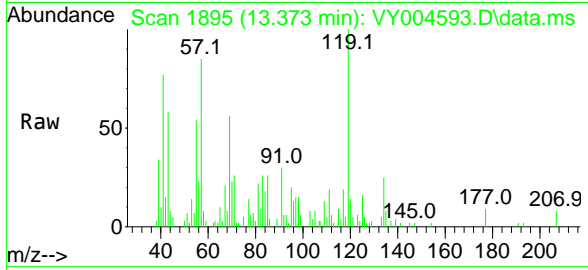
Tgt Ion:105 Resp: 7758
 Ion Ratio Lower Upper
 105 100
 134 27.4 10.1 30.3





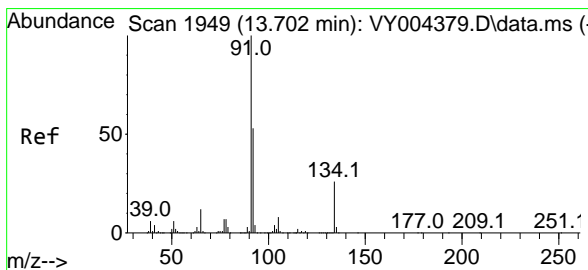
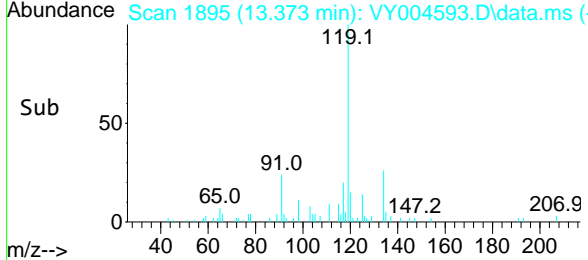
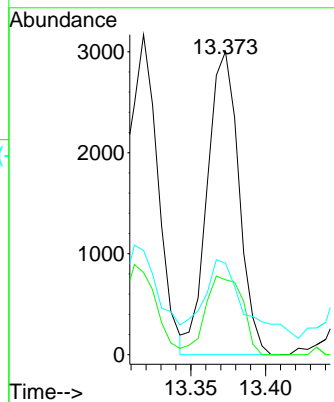
#86
 p-Isopropyltoluene
 Concen: 5.63 ug/l
 RT: 13.373 min Scan# 1895
 Delta R.T. 0.000 min
 Lab File: VY004593.D
 Acq: 22 Apr 2021 18:21

Instrument :
 MSVOA_Y
 ClientSampled :

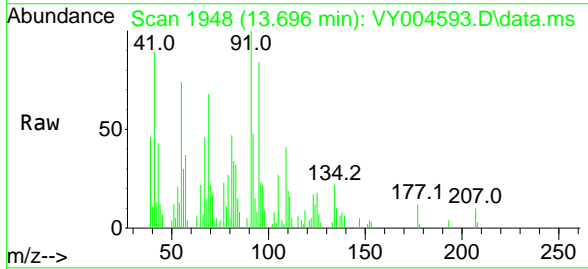


Tgt Ion: 119 Resp: 4407

Ion	Ratio	Lower	Upper
119	100		
134	30.3	13.3	39.8
91	32.5	11.9	35.7

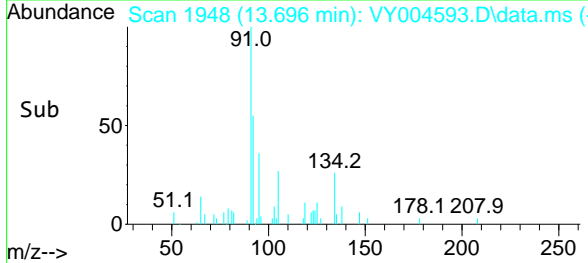
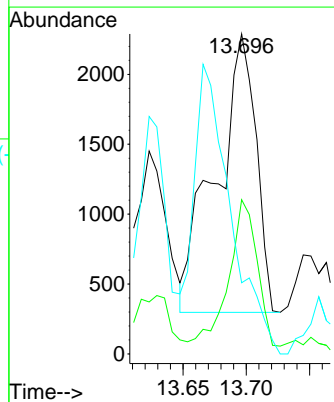


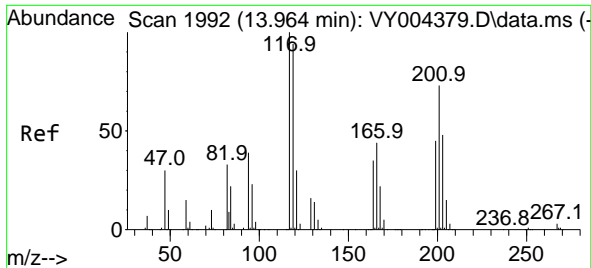
#89
 n-Butylbenzene
 Concen: 5.86 ug/l
 RT: 13.696 min Scan# 1948
 Delta R.T. -0.006 min
 Lab File: VY004593.D
 Acq: 22 Apr 2021 18:21



Tgt Ion: 91 Resp: 4380

Ion	Ratio	Lower	Upper
91	100		
92	37.7	26.6	79.8
134	0.0	12.7	38.1

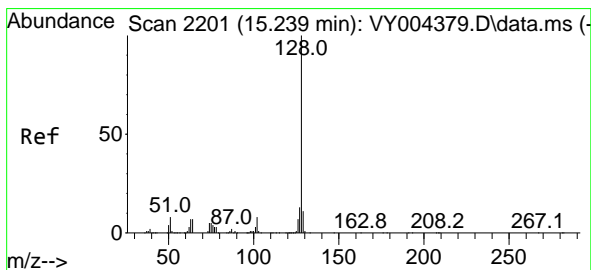
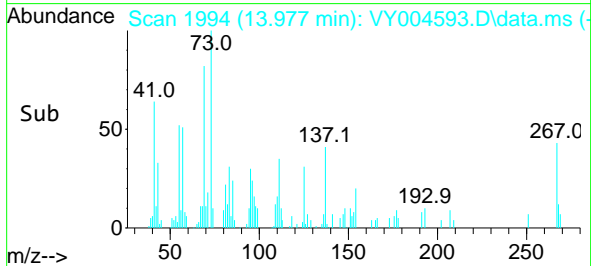
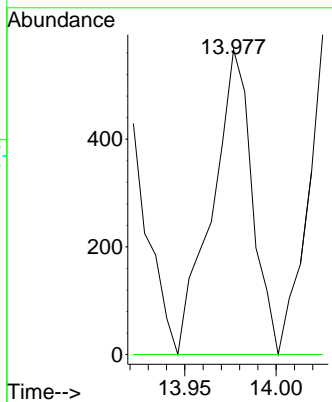
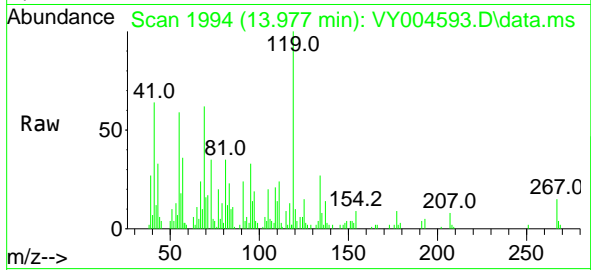




#90
 Hexachloroethane
 Concen: 8.17 ug/l
 RT: 13.977 min Scan# 1994
 Delta R.T. 0.012 min
 Lab File: VY004593.D
 Acq: 22 Apr 2021 18:21

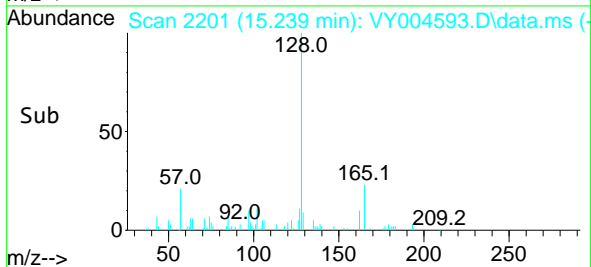
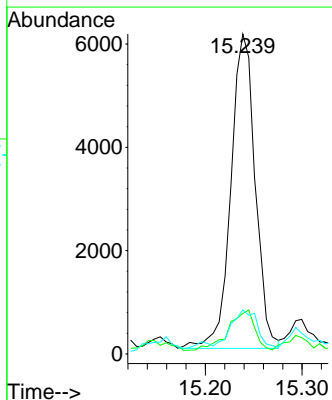
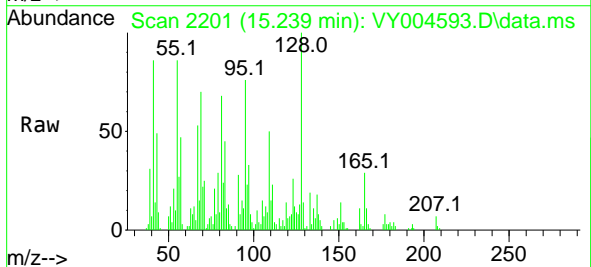
Instrument :
 MSVOA_Y
 ClientSampled :

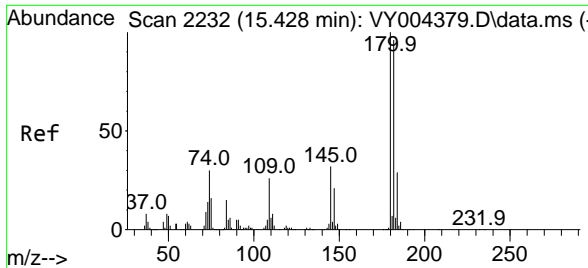
Tgt Ion:117 Resp: 858
 Ion Ratio Lower Upper
 117 100
 201 0.0 36.6 109.9#



#95
 Naphthalene
 Concen: 22.52 ug/l
 RT: 15.239 min Scan# 2201
 Delta R.T. 0.000 min
 Lab File: VY004593.D
 Acq: 22 Apr 2021 18:21

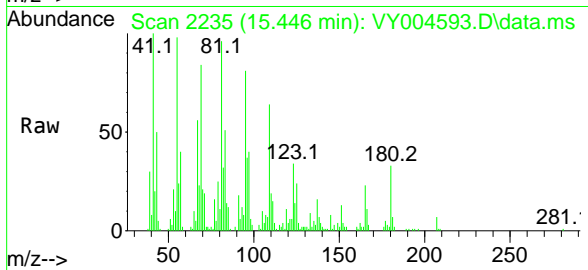
Tgt Ion:128 Resp: 10668
 Ion Ratio Lower Upper
 128 100
 127 13.7 10.2 15.2
 129 12.3 8.8 13.2





#96
 1,2,3-Trichlorobenzene
 Concen: 20.23 ug/l
 RT: 15.446 min Scan# 2235
 Delta R.T. 0.018 min
 Lab File: VY004593.D
 Acq: 22 Apr 2021 18:21

Instrument :
 MSVOA_Y
 ClientSampled :



Tgt Ion:180 Resp: 3889

Ion	Ratio	Lower	Upper
180	100		
182	0.0	47.6	142.8#
145	0.0	16.3	48.8#

