

Data Path : Z:\voasrv\HPCHEM1\MSVOA_Y\Data\VY042221\
 Data File : VY004590.D
 Acq On : 22 Apr 2021 17:11
 Operator : SY/MD
 Sample : M2107-03
 Misc : 5.04G/5ML/MSVOA_Y/SOIL
 ALS Vial : 20 Sample Multiplier: 1

Instrument :
 MSVOA_Y
 ClientSampleId :
 SB-29-9.5-10.0

Integration Parameters: RTEINT.P
 Integrator: RTE
 Smoothing : ON Filtering: 5
 Sampling : 1 Min Area: 3 % of largest Peak
 Start Thrs: 0.2 Max Peaks: 100
 Stop Thrs : 0 Peak Location: TOP

If leading or trailing edge < 100 prefer < Baseline drop else tangent >
 Peak separation: 5

Method : Z:\voasrv\HPCHEM1\MSVOA_Y\methods\82Y041221S.M
 Title : SW846 8260

Signal : TIC: VY004590.D\data.ms

peak #	R.T. min	first scan	max scan	last scan	PK TY	peak height	corr. area	corr. % max.	% of total
1	4.735	467	478	488	rBV2	9543	30230	4.25%	0.787%
2	7.728	959	969	975	rBV	92617	221900	31.17%	5.778%
3	7.801	975	981	993	rVB	152493	346003	48.60%	9.009%
4	8.149	1025	1038	1049	rBV2	102081	261523	36.73%	6.809%
5	8.697	1120	1128	1140	rVB	259673	497507	69.87%	12.954%
6	9.752	1293	1301	1308	rVB3	5558	10535	1.48%	0.274%
7	10.185	1365	1372	1380	rBV	425209	712003	100.00%	18.539%
8	10.581	1431	1437	1444	rBV2	9561	17213	2.42%	0.448%
9	11.325	1553	1559	1567	rVB	10780	17878	2.51%	0.465%
10	11.496	1580	1587	1597	rBV	389027	628996	88.34%	16.377%
11	12.483	1742	1749	1760	rVB2	309438	492479	69.17%	12.823%
12	12.843	1798	1808	1813	rVB5	4162	7871	1.11%	0.205%
13	13.184	1858	1864	1870	rVB2	4793	7570	1.06%	0.197%
14	13.428	1893	1904	1910	rBV	383708	579742	81.42%	15.095%
15	13.965	1986	1992	2001	rVB	4570	9182	1.29%	0.239%

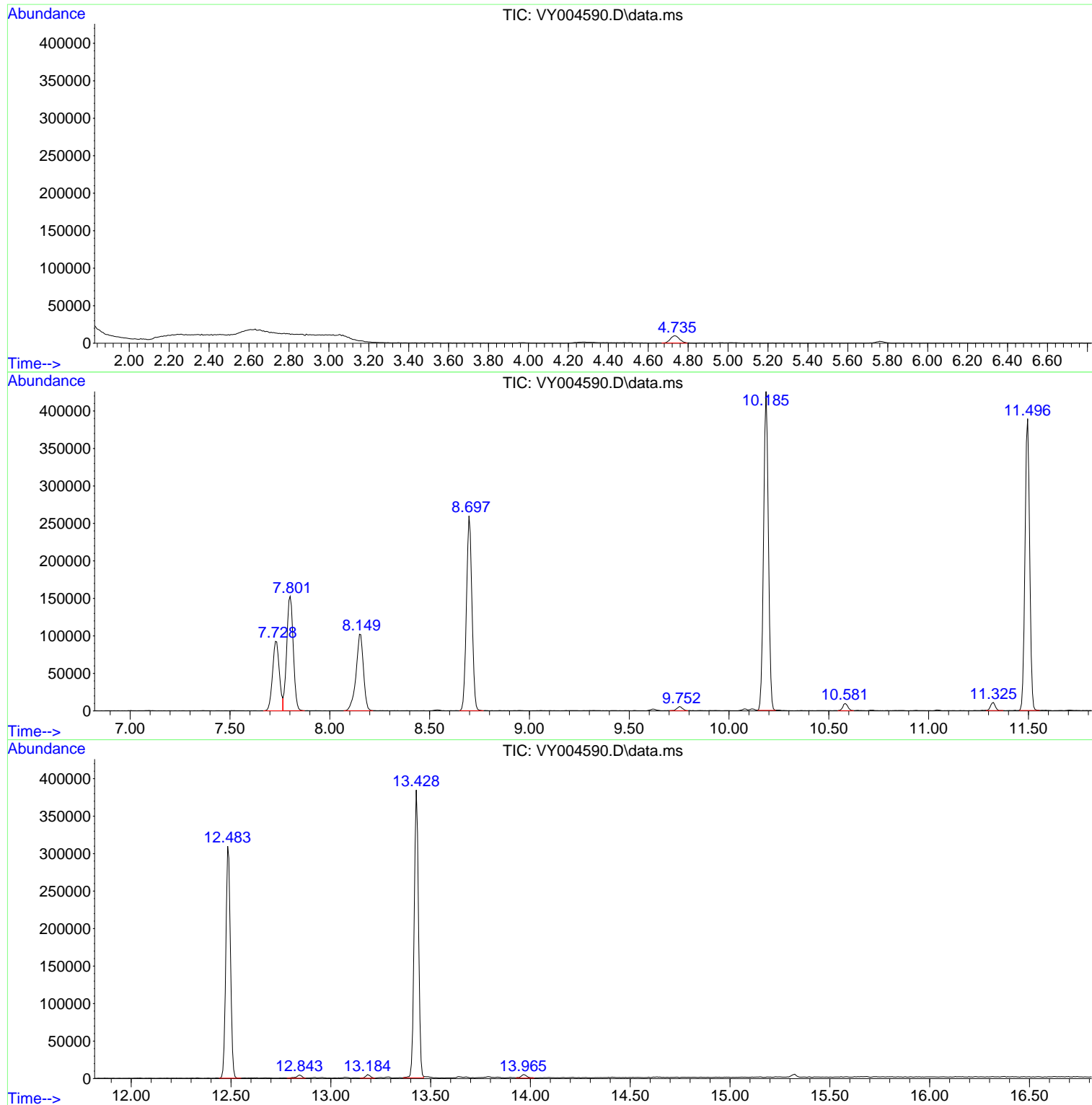
Sum of corrected areas: 3840632

Data Path : Z:\voasrv\HPCHEM1\MSVOA_Y\Data\VY042221\
Data File : VY004590.D
Acq On : 22 Apr 2021 17:11
Operator : SY/MD
Sample : M2107-03
Misc : 5.04G/5ML/MSVOA_Y/SOIL
ALS Vial : 20 Sample Multiplier: 1

Instrument :
MSVOA_Y
ClientSampleId :
SB-29-9.5-10.0

Quant Method : Z:\voasrv\HPCHEM1\MSVOA_Y\methods\82Y041221S.M
Quant Title : SW846 8260

TIC Library : C:\DATABASE\NIST11.L
TIC Integration Parameters: LSCINT.P



Library Search Compound Report

Data Path : Z:\voasrv\HPCHEM1\MSVOA_Y\Data\VY042221\
Data File : VY004590.D
Acq On : 22 Apr 2021 17:11
Operator : SY/MD
Sample : M2107-03
Misc : 5.04G/5ML/MSVOA_Y/SOIL
ALS Vial : 20 Sample Multiplier: 1

Instrument :
MSVOA_Y
ClientSampleId :
SB-29-9.5-10.0

Quant Method : Z:\voasrv\HPCHEM1\MSVOA_Y\methods\82Y041221S.M
Quant Title : SW846 8260

TIC Library : C:\DATABASE\NIST11.L
TIC Integration Parameters: LSCINT.P

No Library Search Compounds Detected

Data Path : Z:\voasrv\HPCHEM1\MSVOA_Y\Data\VY042221\
Data File : VY004590.D
Acq On : 22 Apr 2021 17:11
Operator : SY/MD
Sample : M2107-03
Misc : 5.04G/5ML/MSVOA_Y/SOIL
ALS Vial : 20 Sample Multiplier: 1

Instrument :
MSVOA_Y
ClientSampleId :
SB-29-9.5-10.0

Quant Method : Z:\voasrv\HPCHEM1\MSVOA_Y\methods\82Y041221S.M
Quant Title : SW846 8260

TIC Library : C:\DATABASE\NIST11.L
TIC Integration Parameters: LSCINT.P

TIC Top Hit name	RT	EstConc	Units	Response	--Internal Standard--		
					#	RT	Resp Conc
