

Data Path : Z:\voasrv\HPCHEM1\MSVOA_Y\Data\VY042423\
 Data File : VY013431.D
 Acq On : 25 Apr 2023 06:11
 Operator : KP/MD
 Sample : 02423-10
 Misc : 2.38g/5.0mL/MSVOA_Y/SOIL
 ALS Vial : 51 Sample Multiplier: 1

Instrument :
 MSVOA_Y
 ClientSampleId :
 SPE-1WC-23-04-18

Quant Time: Apr 25 07:17:42 2023
 Quant Method : Z:\voasrv\HPCHEM1\MSVOA_Y\methods\82Y042423S.M
 Quant Title : SW846 8260
 QLast Update : Tue Apr 25 02:39:58 2023
 Response via : Initial Calibration

Compound	R.T.	QIon	Response	Conc	Units	Dev(Min)

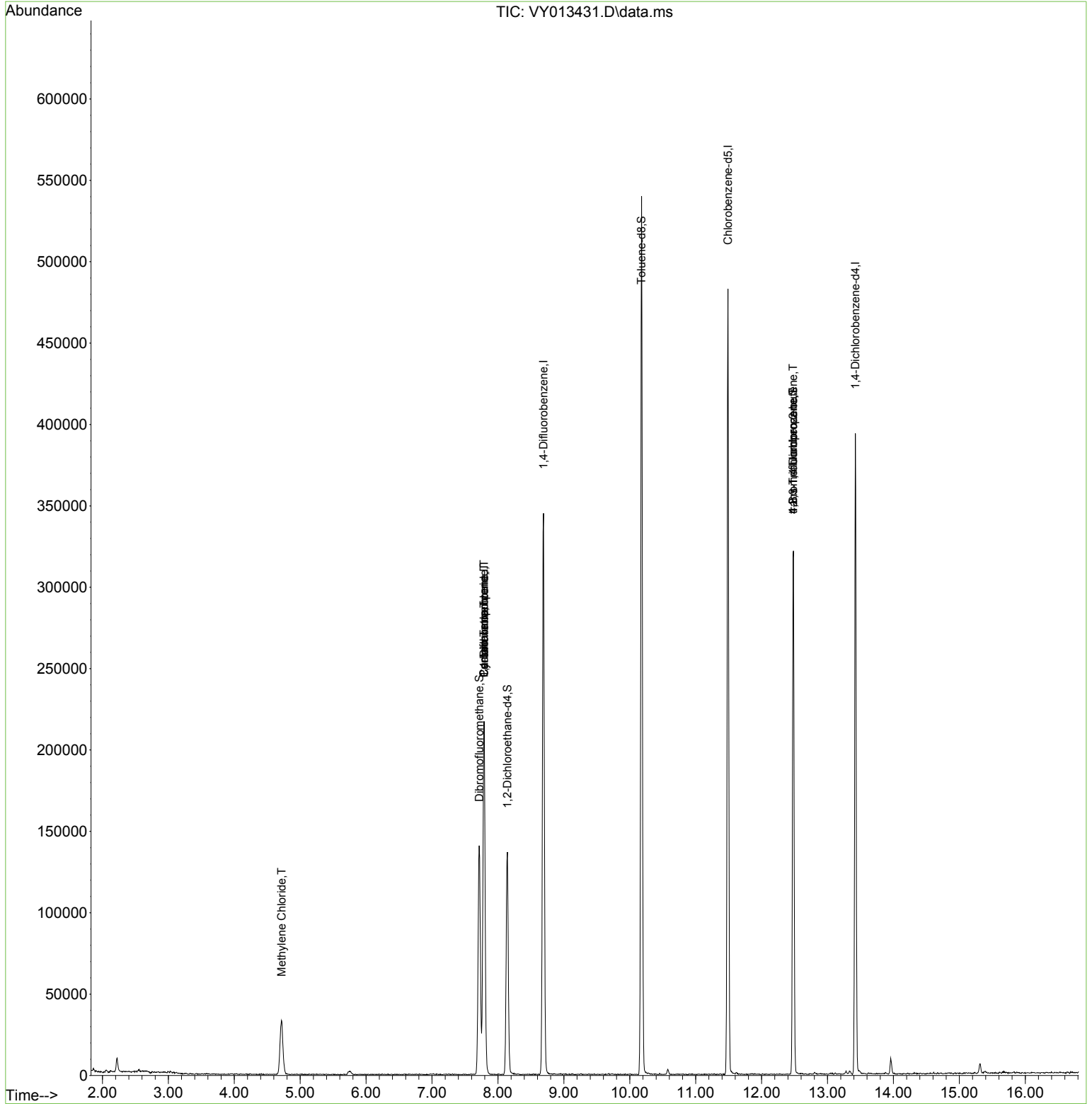
Internal Standards						
1) Pentafluorobenzene	7.789	168	169466	50.000	ug/l	0.00
34) 1,4-Difluorobenzene	8.691	114	288076	50.000	ug/l	0.00
63) Chlorobenzene-d5	11.489	117	250129	50.000	ug/l	0.00
72) 1,4-Dichlorobenzene-d4	13.422	152	100326	50.000	ug/l	0.00
System Monitoring Compounds						
33) 1,2-Dichloroethane-d4	8.142	65	109338	58.856	ug/l	0.00
Spiked Amount	50.000	Range	50 - 163	Recovery	=	117.720%
35) Dibromofluoromethane	7.716	113	99587	54.964	ug/l	0.00
Spiked Amount	50.000	Range	54 - 147	Recovery	=	109.920%
50) Toluene-d8	10.179	98	343909	53.356	ug/l	0.00
Spiked Amount	50.000	Range	58 - 134	Recovery	=	106.720%
62) 4-Bromofluorobenzene	12.477	95	96498	44.409	ug/l	0.00
Spiked Amount	50.000	Range	30 - 143	Recovery	=	88.820%
Target Compounds						
					Qvalue	
13) Acrolein	3.765	56	42	Below Cal	#	16
20) Methylene Chloride	4.716	84	24174	2.933	ug/l	91
31) Cyclohexane	7.789	56	3527	1.060	ug/l #	9
36) 1,1-Dichloropropene	7.789	75	13130	4.366	ug/l #	49
38) Carbon Tetrachloride	7.789	117	16421	5.210	ug/l #	15
76) 1,2,3-Trichloropropane	12.477	75	50563	37.371	ug/l #	100
81) trans-1,4-Dichloro-2-b...	12.477	75	50563	76.444	ug/l #	13

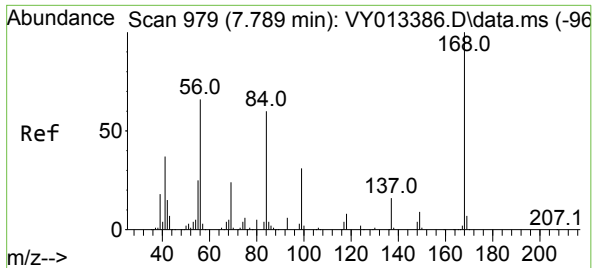
(#) = qualifier out of range (m) = manual integration (+) = signals summed

Data Path : Z:\voasrv\HPCHEM1\MSVOA_Y\Data\VY042423\
 Data File : VY013431.D
 Acq On : 25 Apr 2023 06:11
 Operator : KP/MD
 Sample : 02423-10
 Misc : 2.38g/5.0mL/MSVOA_Y/SOIL
 ALS Vial : 51 Sample Multiplier: 1

Instrument :
 MSVOA_Y
 ClientSampleId :
 SPE-1WC-23-04-18

Quant Time: Apr 25 07:17:42 2023
 Quant Method : Z:\voasrv\HPCHEM1\MSVOA_Y\methods\82Y042423S.M
 Quant Title : SW846 8260
 QLast Update : Tue Apr 25 02:39:58 2023
 Response via : Initial Calibration

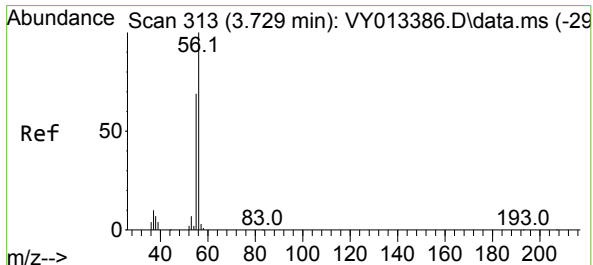
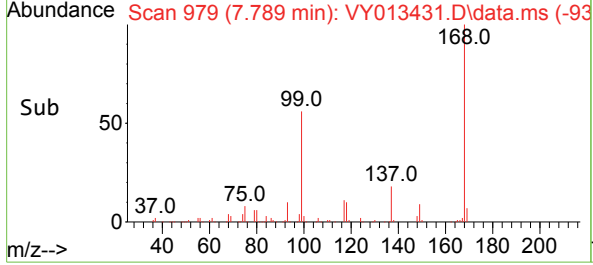
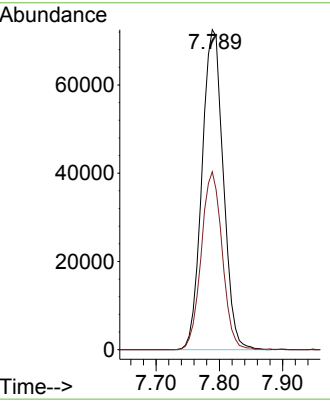
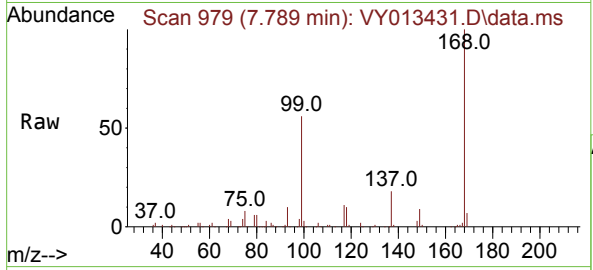




#1
 Pentafluorobenzene
 Concen: 50.000 ug/l
 RT: 7.789 min Scan# 91
 Delta R.T. -0.000 min
 Lab File: VY013431.D
 Acq: 25 Apr 2023 06:11

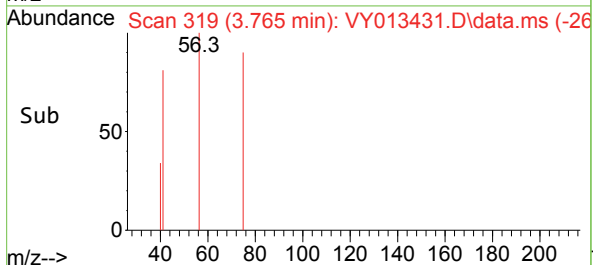
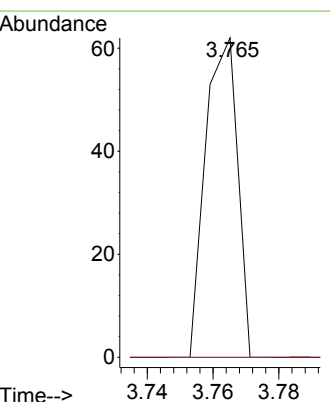
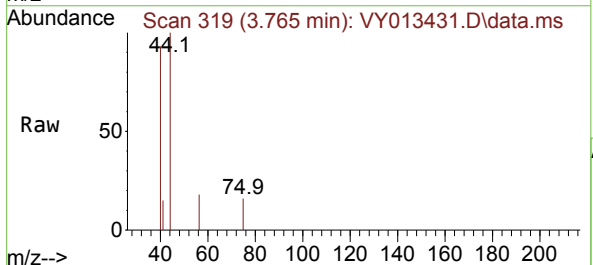
Instrument : MSVOA_Y
 ClientSampleId : SPE-1WC-23-04-18

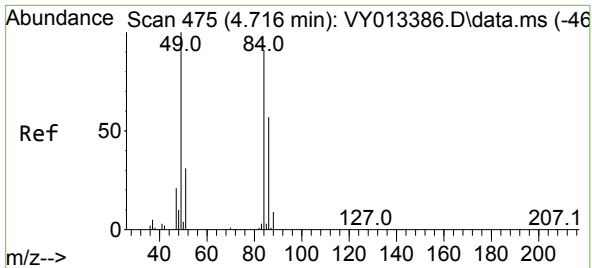
Tgt Ion:168 Resp: 169466
 Ion Ratio Lower Upper
 168 100
 99 55.6 41.8 62.6



#13
 Acrolein
 Concen: Below Cal
 RT: 3.765 min Scan# 319
 Delta R.T. 0.036 min
 Lab File: VY013431.D
 Acq: 25 Apr 2023 06:11

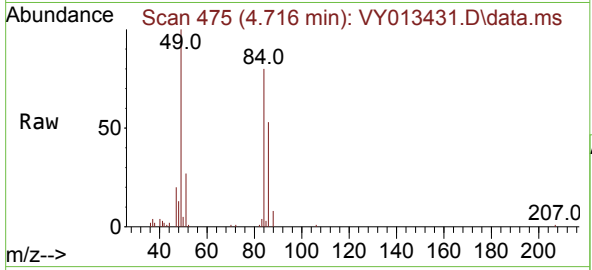
Tgt Ion: 56 Resp: 42
 Ion Ratio Lower Upper
 56 100
 55 0.0 54.1 81.1#





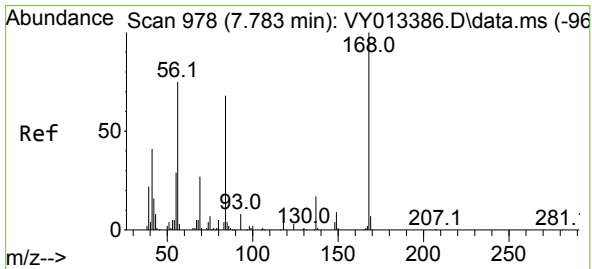
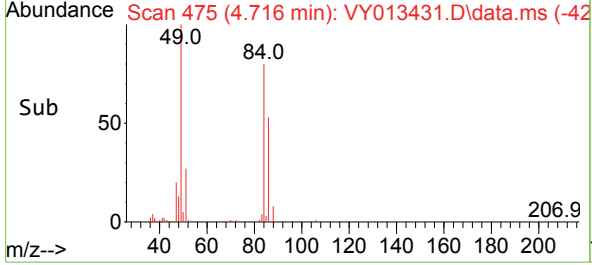
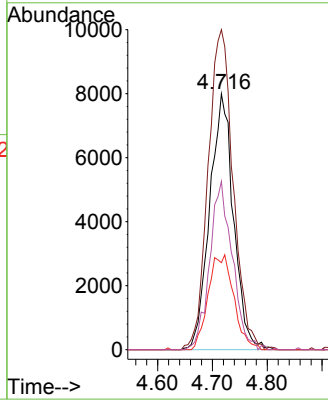
#20
 Methylene Chloride
 Concen: 2.933 ug/l
 RT: 4.716 min Scan# 41
 Delta R.T. 0.000 min
 Lab File: VY013431.D
 Acq: 25 Apr 2023 06:11

Instrument :
 MSVOA_Y
 ClientSampleId :
 SPE-1WC-23-04-18



Tgt Ion: 84 Resp: 24174

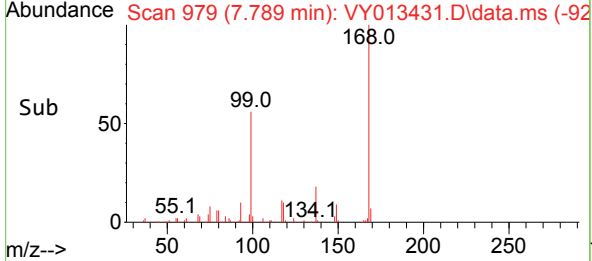
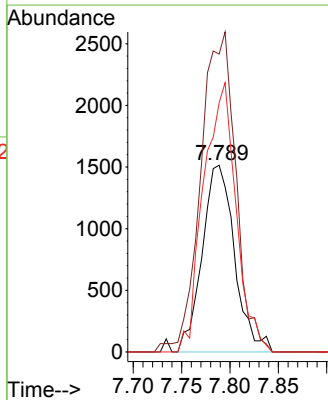
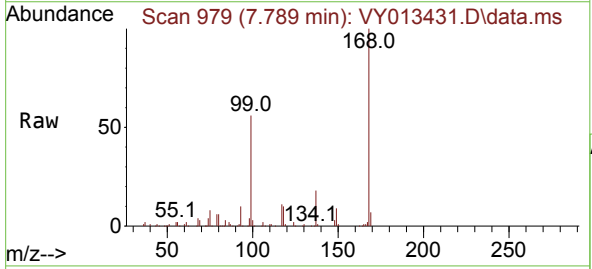
Ion	Ratio	Lower	Upper
84	100		
49	125.1	88.0	132.0
51	34.0	27.4	41.0
86	65.8	50.4	75.6

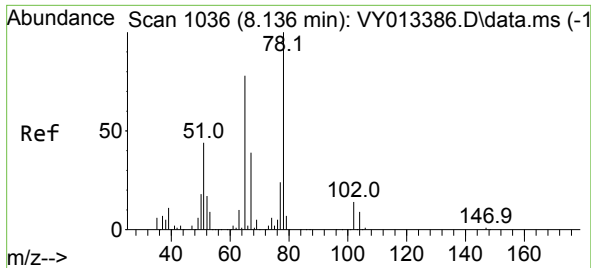


#31
 Cyclohexane
 Concen: 1.060 ug/l
 RT: 7.789 min Scan# 979
 Delta R.T. 0.006 min
 Lab File: VY013431.D
 Acq: 25 Apr 2023 06:11

Tgt Ion: 56 Resp: 3527

Ion	Ratio	Lower	Upper
56	100		
69	159.5	29.2	43.8#
84	133.5	73.0	109.6#

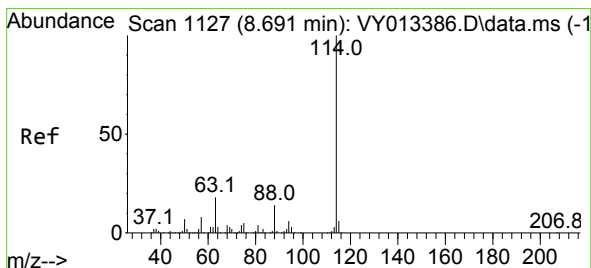
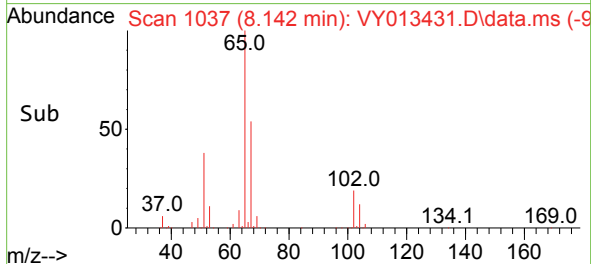
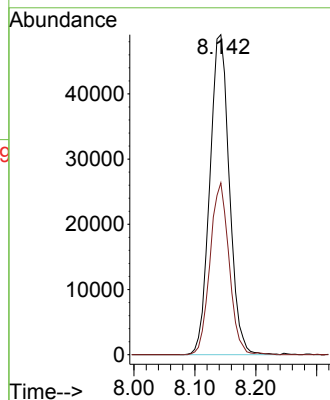
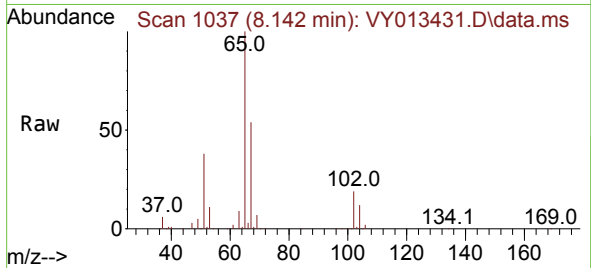




#33
 1,2-Dichloroethane-d4
 Concen: 58.856 ug/l
 RT: 8.142 min Scan# 1037
 Delta R.T. 0.006 min
 Lab File: VY013431.D
 Acq: 25 Apr 2023 06:11

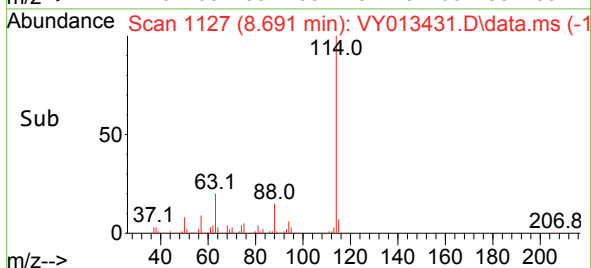
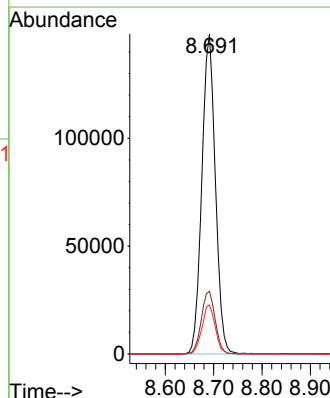
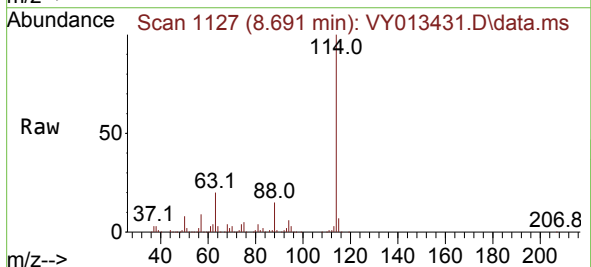
Instrument : MSVOA_Y
 ClientSampleId : SPE-1WC-23-04-18

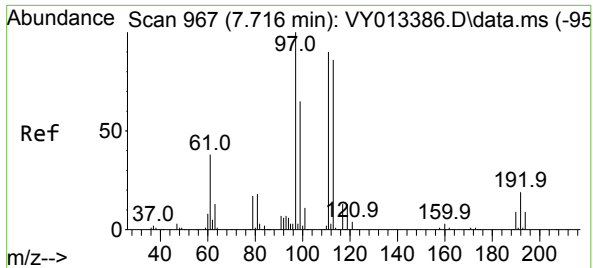
Tgt Ion: 65 Resp: 109338
 Ion Ratio Lower Upper
 65 100
 67 52.4 0.0 103.4



#34
 1,4-Difluorobenzene
 Concen: 50.000 ug/l
 RT: 8.691 min Scan# 1127
 Delta R.T. 0.000 min
 Lab File: VY013431.D
 Acq: 25 Apr 2023 06:11

Tgt Ion: 114 Resp: 288076
 Ion Ratio Lower Upper
 114 100
 63 19.6 0.0 36.6
 88 15.3 0.0 28.8

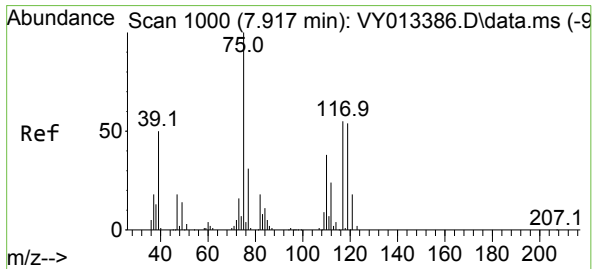
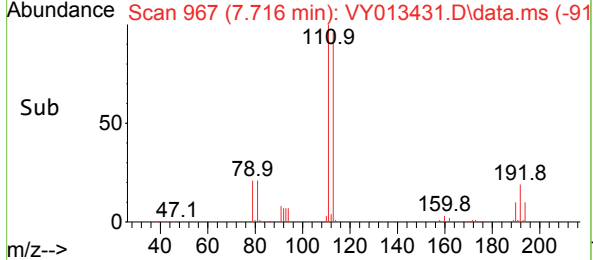
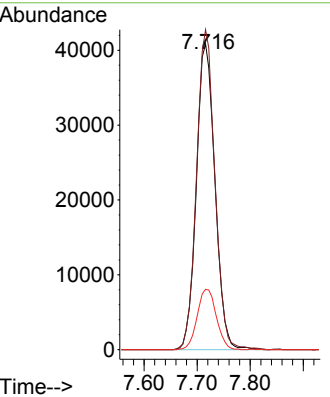
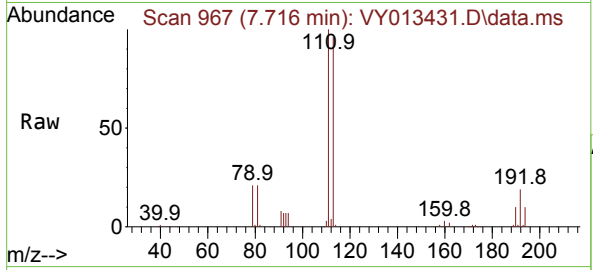




#35
 Dibromofluoromethane
 Concen: 54.964 ug/l
 RT: 7.716 min Scan# 909
 Delta R.T. -0.000 min
 Lab File: VY013431.D
 Acq: 25 Apr 2023 06:11

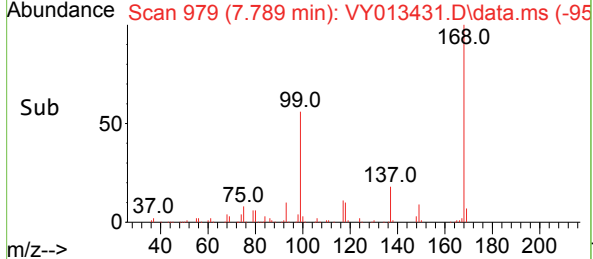
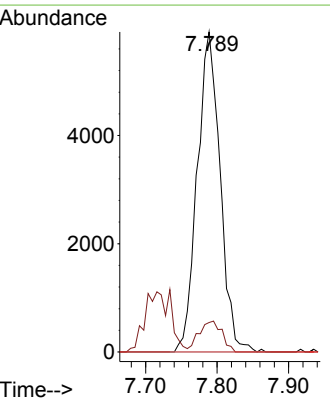
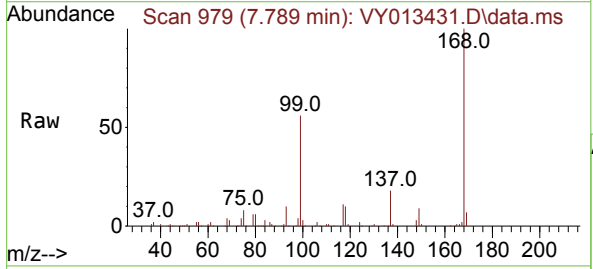
Instrument : MSVOA_Y
 ClientSampleId : SPE-1WC-23-04-18

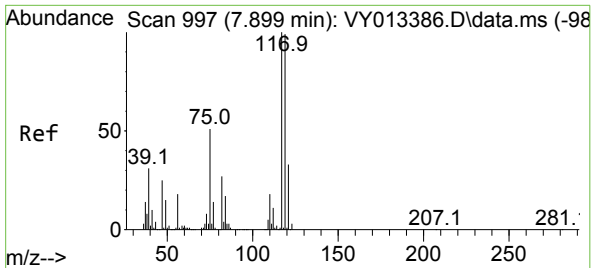
Tgt Ion	Resp	Lower	Upper
113	99587		
113	100		
111	103.3	82.2	123.2
192	20.4	16.7	25.1



#36
 1,1-Dichloropropene
 Concen: 4.366 ug/l
 RT: 7.789 min Scan# 979
 Delta R.T. -0.128 min
 Lab File: VY013431.D
 Acq: 25 Apr 2023 06:11

Tgt Ion	Resp	Lower	Upper
75	13130		
75	100		
110	9.7	18.7	56.1#
77	0.0	24.6	37.0#

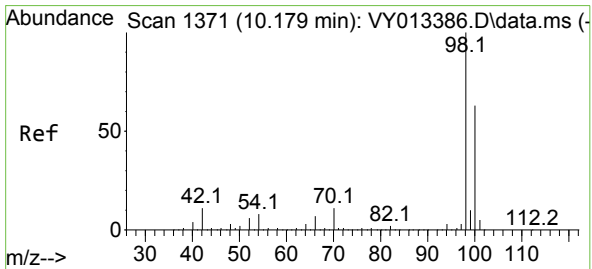
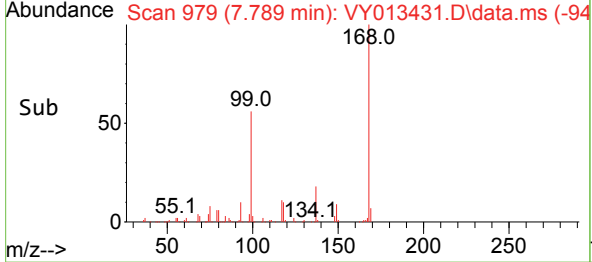
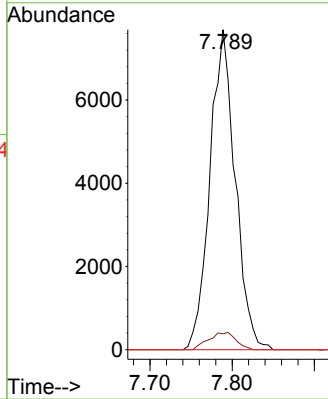
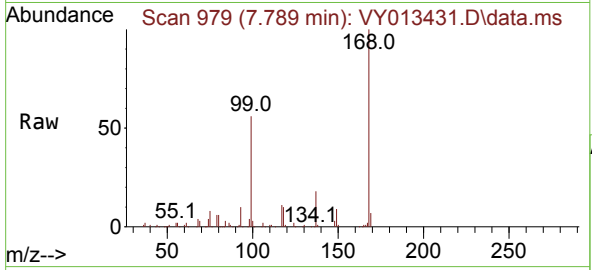




#38
 Carbon Tetrachloride
 Concen: 5.210 ug/l
 RT: 7.789 min Scan# 91
 Delta R.T. -0.110 min
 Lab File: VY013431.D
 Acq: 25 Apr 2023 06:11

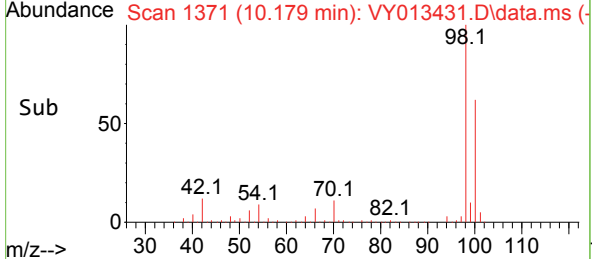
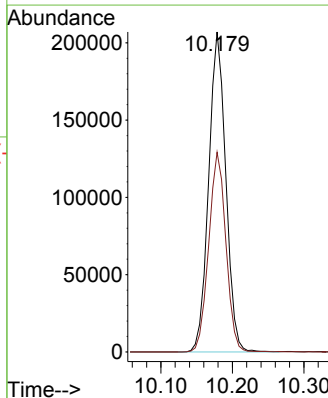
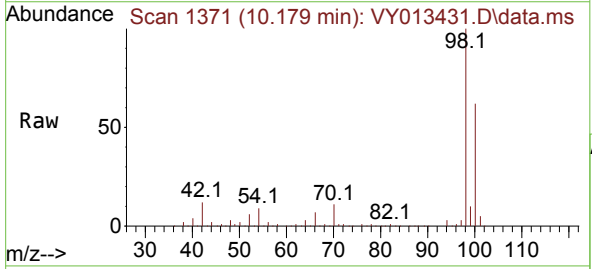
Instrument : MSVOA_Y
 ClientSampleId : SPE-1WC-23-04-18

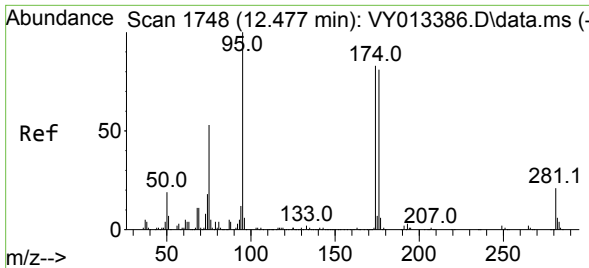
Tgt Ion	Resp	Lower	Upper
117	16421		
117	100		
119	5.0	79.0	118.6#
121	0.0	26.6	40.0#



#50
 Toluene-d8
 Concen: 53.356 ug/l
 RT: 10.179 min Scan# 1371
 Delta R.T. -0.000 min
 Lab File: VY013431.D
 Acq: 25 Apr 2023 06:11

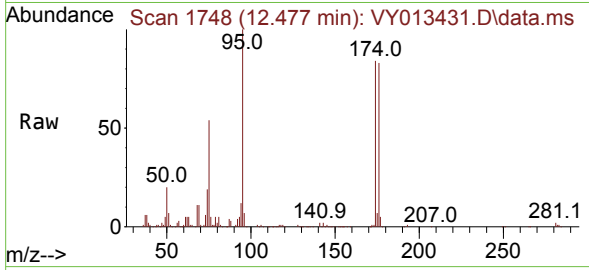
Tgt Ion	Resp	Lower	Upper
98	343909		
98	100		
100	62.5	50.5	75.7





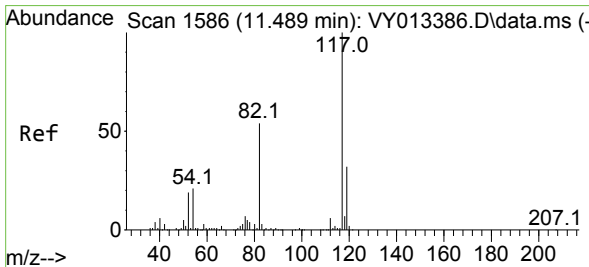
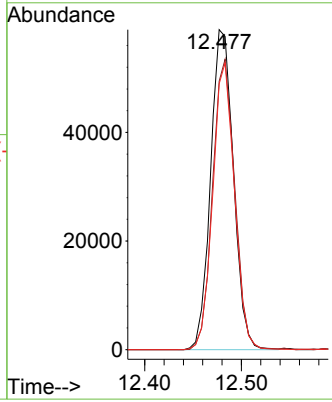
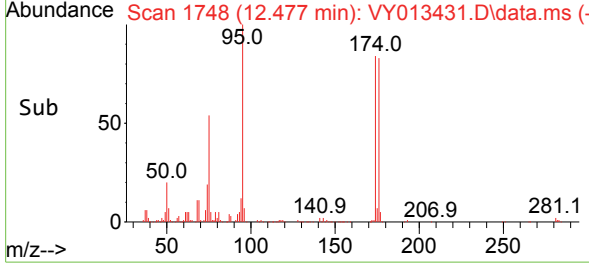
#62
 4-Bromofluorobenzene
 Concen: 44.409 ug/l
 RT: 12.477 min Scan# 1748
 Delta R.T. 0.000 min
 Lab File: VY013431.D
 Acq: 25 Apr 2023 06:11

Instrument : MSVOA_Y
 ClientSampleId : SPE-1WC-23-04-18

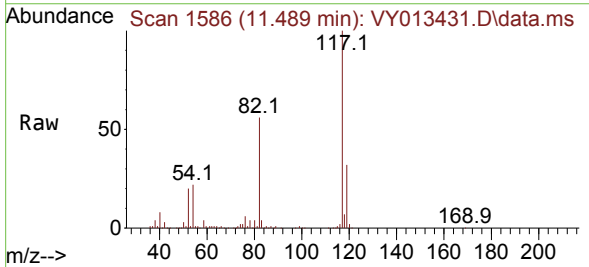


Tgt Ion: 95 Resp: 96498

Ion	Ratio	Lower	Upper
95	100		
174	88.0	0.0	182.0
176	85.5	0.0	175.4

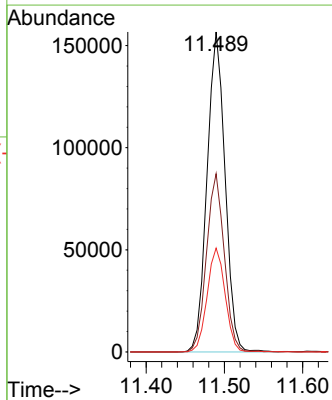
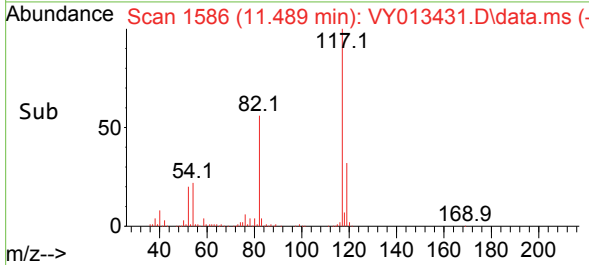


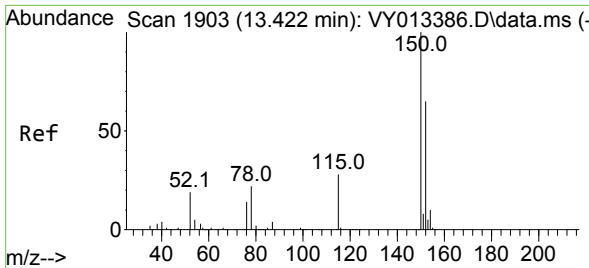
#63
 Chlorobenzene-d5
 Concen: 50.000 ug/l
 RT: 11.489 min Scan# 1586
 Delta R.T. 0.000 min
 Lab File: VY013431.D
 Acq: 25 Apr 2023 06:11



Tgt Ion: 117 Resp: 250129

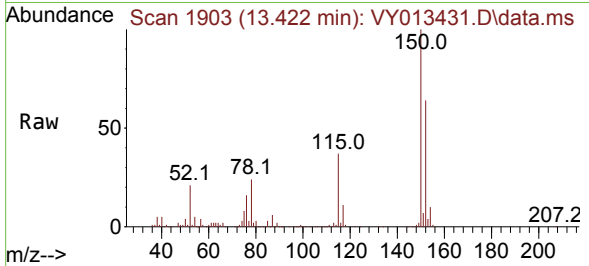
Ion	Ratio	Lower	Upper
117	100		
82	55.7	43.0	64.6
119	32.4	25.5	38.3



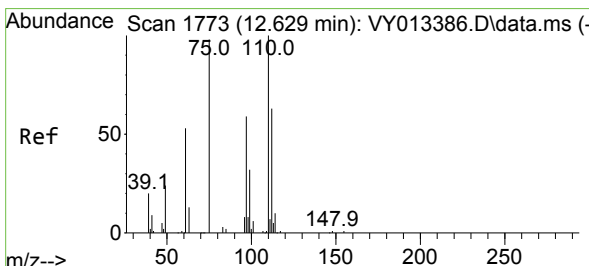
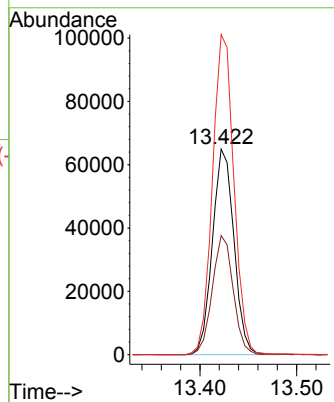
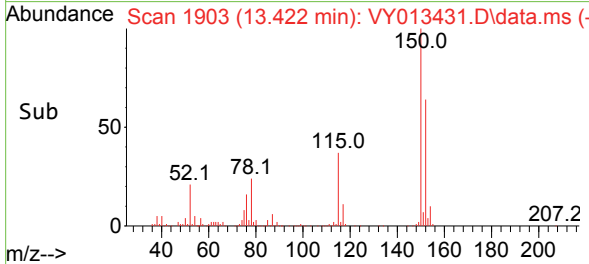


#72
 1,4-Dichlorobenzene-d4
 Concen: 50.000 ug/l
 RT: 13.422 min Scan# 1903
 Delta R.T. -0.000 min
 Lab File: VY013431.D
 Acq: 25 Apr 2023 06:11

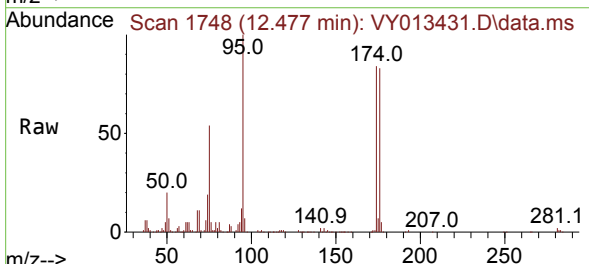
Instrument : MSVOA_Y
 ClientSampleId : SPE-1WC-23-04-18



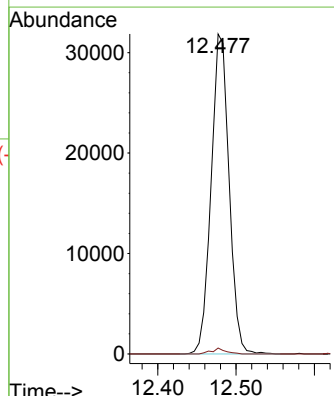
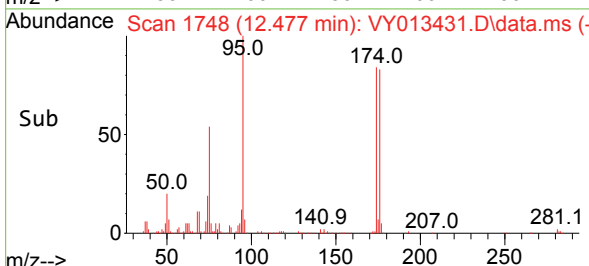
Tgt Ion:152 Resp: 100326
 Ion Ratio Lower Upper
 152 100
 115 56.6 28.1 84.2
 150 155.4 0.0 352.0

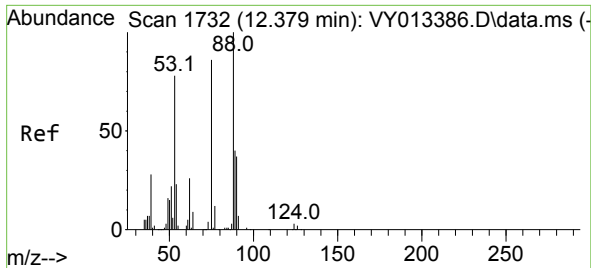


#76
 1,2,3-Trichloropropane
 Concen: 37.371 ug/l
 RT: 12.477 min Scan# 1748
 Delta R.T. -0.152 min
 Lab File: VY013431.D
 Acq: 25 Apr 2023 06:11



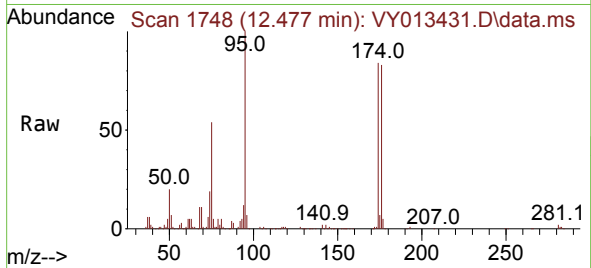
Tgt Ion: 75 Resp: 50563
 Ion Ratio Lower Upper
 75 100
 77 1.4 0.0 0.0#





#81
 trans-1,4-Dichloro-2-butene
 Concen: 76.444 ug/l
 RT: 12.477 min Scan# 11
 Delta R.T. 0.098 min
 Lab File: VY013431.D
 Acq: 25 Apr 2023 06:11

Instrument : MSVOA_Y
 ClientSampleId : SPE-1WC-23-04-18



Tgt Ion: 75 Resp: 50563

Ion	Ratio	Lower	Upper
75	100		
53	0.2	73.2	109.8#
89	0.0	38.0	57.0#

