

Data Path : Z:\voasrv\HPCHEM1\MSVOA\_Y\Data\VY042922\  
 Data File : VY008565.D  
 Acq On : 29 Apr 2022 17:33  
 Operator : KP/MD  
 Sample : N2599-01RE  
 Misc : 5.07g/5.0mL/MSVOA\_Y/SOIL  
 ALS Vial : 14 Sample Multiplier: 1

Instrument :  
 MSVOA\_Y  
 ClientSampleId :  
 M-1RE

Integration Parameters: RTEINT.P

Integrator: RTE  
 Smoothing : ON Filtering: 5  
 Sampling : 1 Min Area: 3 % of largest Peak  
 Start Thrs: 0.2 Max Peaks: 100  
 Stop Thrs : 0 Peak Location: TOP

If leading or trailing edge < 100 prefer < Baseline drop else tangent >  
 Peak separation: 5

Method : Z:\voasrv\HPCHEM1\MSVOA\_Y\methods\82Y042122S.M  
 Title : SW846 8260

Signal : TIC: VY008565.D\data.ms

peak #	R.T. min	first scan	max scan	last scan	PK TY	peak height	corr. area	corr. % max.	% of total
1	2.113	44	48	51	rBV2	711	1150	1.86%	0.465%
2	2.662	135	138	143	rVB4	695	979	1.59%	0.396%
3	4.710	467	474	483	rBB3	2253	6207	10.05%	2.512%
4	7.722	958	968	973	rBV4	5769	13723	22.22%	5.553%
5	7.789	973	979	990	rVB2	10497	22899	37.08%	9.266%
6	8.136	1028	1036	1047	rVB2	7782	16935	27.42%	6.853%
7	8.691	1118	1127	1133	rBV	24200	45709	74.01%	18.497%
8	10.179	1364	1371	1381	rVV	36067	61757	100.00%	24.991%
9	11.490	1581	1586	1595	rVB	19148	31398	50.84%	12.706%
10	12.483	1743	1749	1755	rVB	14429	21920	35.49%	8.870%
11	13.428	1897	1904	1910	rBV	16389	24443	39.58%	9.891%

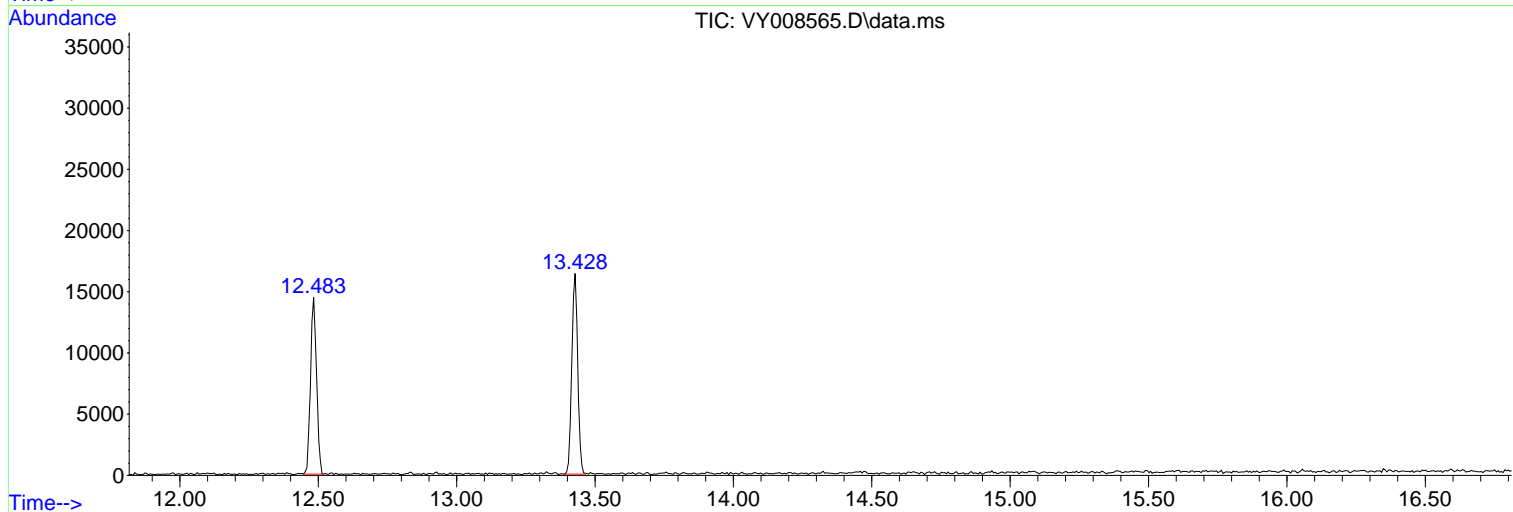
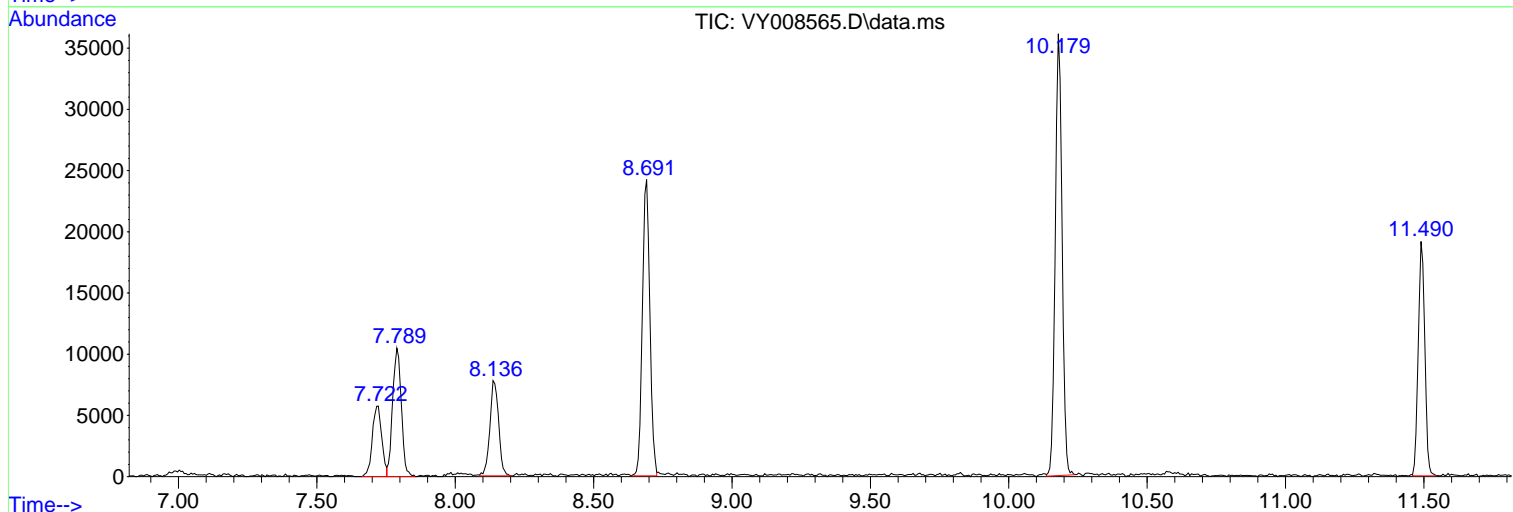
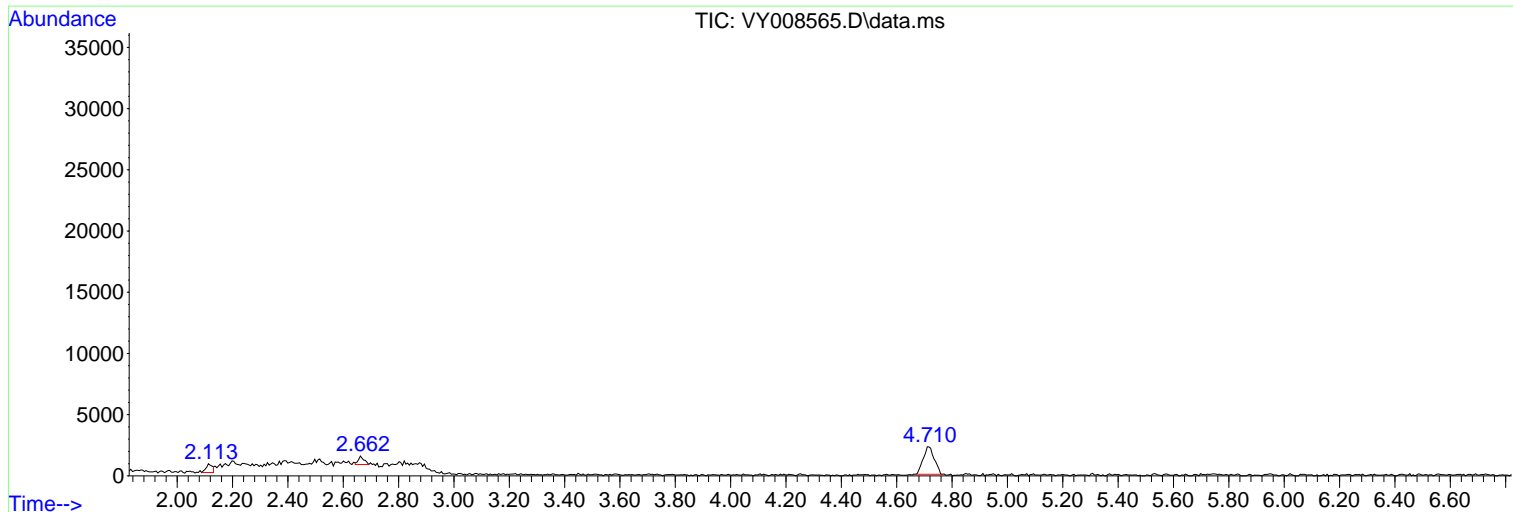
Sum of corrected areas: 247120

Data Path : Z:\voasrv\HPCHEM1\MSVOA\_Y\Data\VY042922\  
 Data File : VY008565.D  
 Acq On : 29 Apr 2022 17:33  
 Operator : KP/MD  
 Sample : N2599-01RE  
 Misc : 5.07g/5.0mL/MSVOA\_Y/SOIL  
 ALS Vial : 14 Sample Multiplier: 1

Instrument :  
 MSVOA\_Y  
 ClientSampleId :  
 M-1RE

Quant Method : Z:\voasrv\HPCHEM1\MSVOA\_Y\methods\82Y042122S.M  
 Quant Title : SW846 8260

TIC Library : C:\Database\NIST20.L  
 TIC Integration Parameters: LSCINT.P



Library Search Compound Report

Data Path : Z:\voasrv\HPCHEM1\MSVOA\_Y\Data\VY042922\  
Data File : VY008565.D  
Acq On : 29 Apr 2022 17:33  
Operator : KP/MD  
Sample : N2599-01RE  
Misc : 5.07g/5.0mL/MSVOA\_Y/SOIL  
ALS Vial : 14 Sample Multiplier: 1

Instrument :  
MSVOA\_Y  
ClientSampleId :  
M-1RE

Quant Method : Z:\voasrv\HPCHEM1\MSVOA\_Y\methods\82Y042122S.M  
Quant Title : SW846 8260

TIC Library : C:\Database\NIST20.L  
TIC Integration Parameters: LSCINT.P

No Library Search Compounds Detected

\*\*\*\*\*

Data Path : Z:\voasrv\HPCHEM1\MSVOA\_Y\Data\VY042922\  
Data File : VY008565.D  
Acq On : 29 Apr 2022 17:33  
Operator : KP/MD  
Sample : N2599-01RE  
Misc : 5.07g/5.0mL/MSVOA\_Y/SOIL  
ALS Vial : 14 Sample Multiplier: 1

Instrument :  
MSVOA\_Y  
ClientSampleId :  
M-1RE

Quant Method : Z:\voasrv\HPCHEM1\MSVOA\_Y\methods\82Y042122S.M  
Quant Title : SW846 8260

TIC Library : C:\Database\NIST20.L  
TIC Integration Parameters: LSCINT.P

TIC Top Hit name	RT	EstConc	Units	Response	#	RT	Resp	Conc
------------------	----	---------	-------	----------	---	----	------	------

---