

Data Path : Z:\voasrv\HPCHEM1\MSVOA\_Y\Data\VY050224\  
 Data File : VY018122.D  
 Acq On : 02 May 2024 17:17  
 Operator : SY/MD  
 Sample : P2330-07  
 Misc : 3.31g/5.0mL/MSVOA\_Y/SOIL/A  
 ALS Vial : 18 Sample Multiplier: 1

Instrument :  
 MSVOA\_Y  
 ClientSampleId :

Quant Time: May 02 23:06:51 2024  
 Quant Method : Z:\voasrv\HPCHEM1\MSVOA\_Y\methods\82Y050124S.M  
 Quant Title : SW846 8260  
 QLast Update : Wed May 01 16:21:20 2024  
 Response via : Initial Calibration

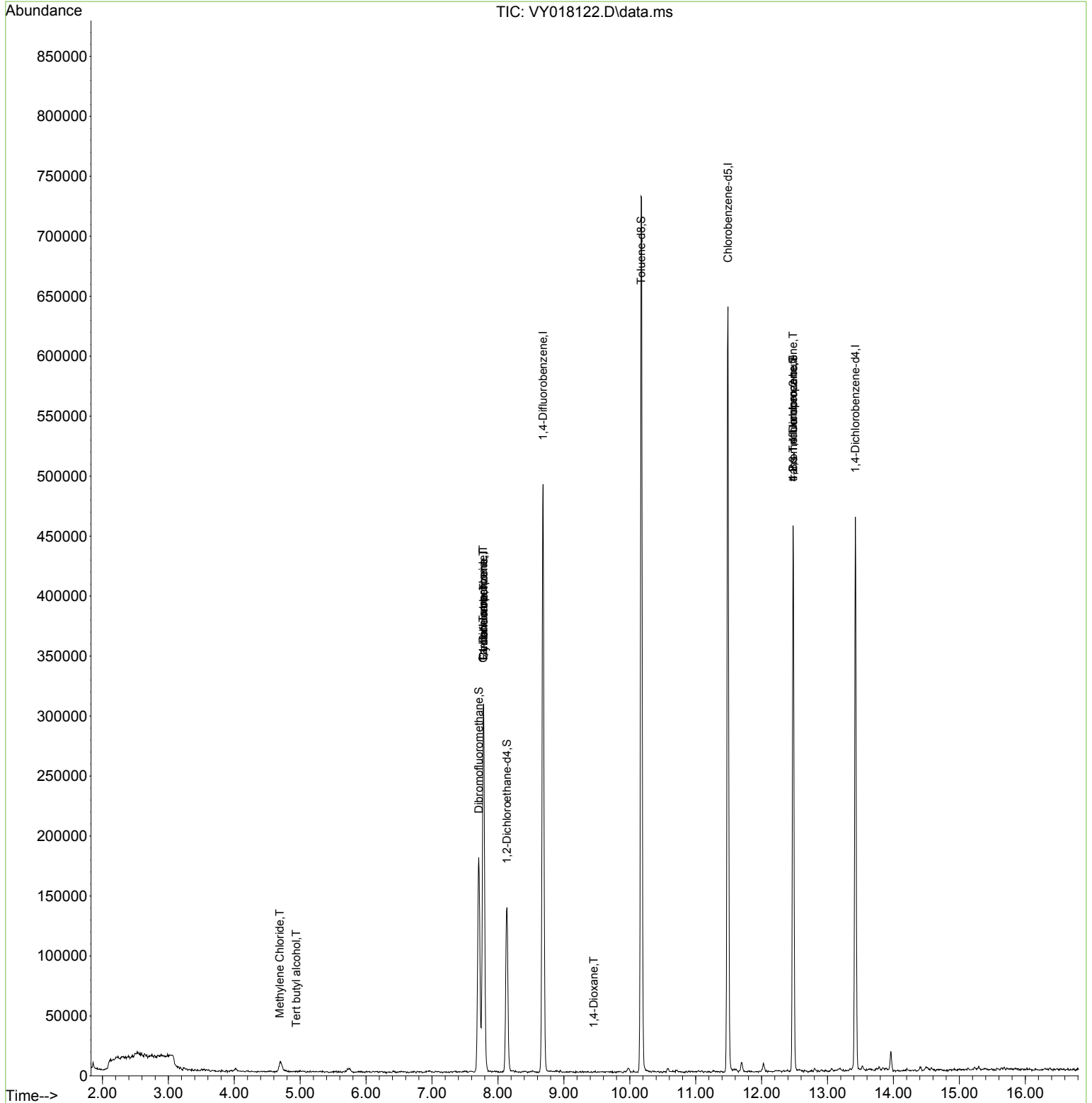
Compound	R.T.	QIon	Response	Conc	Units	Dev(Min)
-----						
Internal Standards						
1) Pentafluorobenzene	7.783	168	261062	50.000	ug/l	0.00
34) 1,4-Difluorobenzene	8.685	114	450061	50.000	ug/l	0.00
63) Chlorobenzene-d5	11.489	117	378569	50.000	ug/l	0.00
72) 1,4-Dichlorobenzene-d4	13.422	152	125252	50.000	ug/l	0.00
System Monitoring Compounds						
33) 1,2-Dichloroethane-d4	8.136	65	102852	49.982	ug/l	0.00
Spiked Amount	50.000	Range	50 - 163	Recovery	=	99.960%
35) Dibromofluoromethane	7.710	113	130391	50.415	ug/l	-0.01
Spiked Amount	50.000	Range	54 - 147	Recovery	=	100.820%
50) Toluene-d8	10.173	98	494248	48.950	ug/l	0.00
Spiked Amount	50.000	Range	58 - 134	Recovery	=	97.900%
62) 4-Bromofluorobenzene	12.477	95	138626	39.895	ug/l	0.00
Spiked Amount	50.000	Range	30 - 143	Recovery	=	79.780%
Target Compounds						
					Qvalue	
11) Tert butyl alcohol	4.942	59	230	1.371	ug/l #	1
20) Methylene Chloride	4.692	84	6893	2.509	ug/l #	86
31) Cyclohexane	7.783	56	4185	1.061	ug/l #	1
36) 1,1-Dichloropropene	7.777	75	16982	4.919	ug/l #	48
38) Carbon Tetrachloride	7.777	117	23761	6.064	ug/l #	18
49) 1,4-Dioxane	9.453	88	42	2.572	ug/l #	25
76) 1,2,3-Trichloropropane	12.477	75	67530	64.242	ug/l #	100
81) trans-1,4-Dichloro-2-b...	12.477	75	67530	117.034	ug/l #	16
-----						

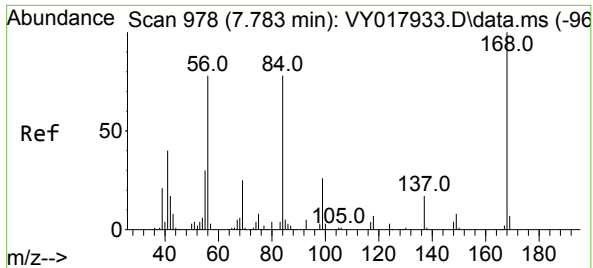
(#) = qualifier out of range (m) = manual integration (+) = signals summed

Data Path : Z:\voasrv\HPCHEM1\MSVOA\_Y\Data\VY050224\  
 Data File : VY018122.D  
 Acq On : 02 May 2024 17:17  
 Operator : SY/MD  
 Sample : P2330-07  
 Misc : 3.31g/5.0mL/MSVOA\_Y/SOIL/A  
 ALS Vial : 18 Sample Multiplier: 1

Instrument :  
 MSVOA\_Y  
 ClientSampleId :

Quant Time: May 02 23:06:51 2024  
 Quant Method : Z:\voasrv\HPCHEM1\MSVOA\_Y\methods\82Y050124S.M  
 Quant Title : SW846 8260  
 QLast Update : Wed May 01 16:21:20 2024  
 Response via : Initial Calibration

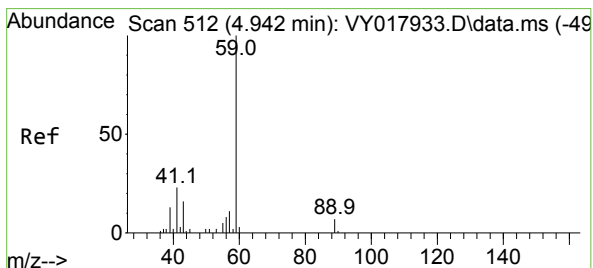
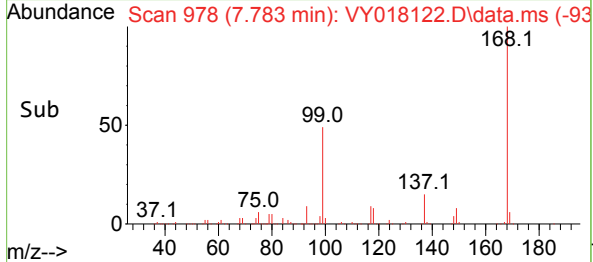
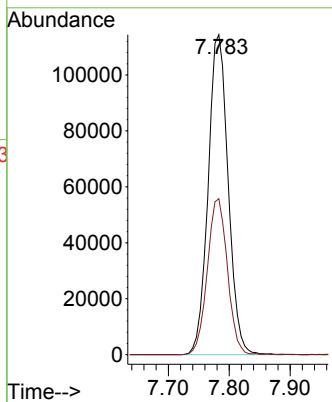
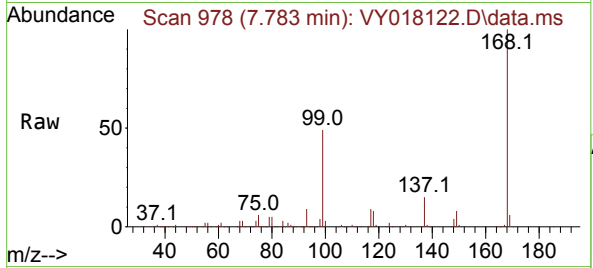




#1  
 Pentafluorobenzene  
 Concen: 50.000 ug/l  
 RT: 7.783 min Scan# 91  
 Delta R.T. -0.006 min  
 Lab File: VY018122.D  
 Acq: 02 May 2024 17:17

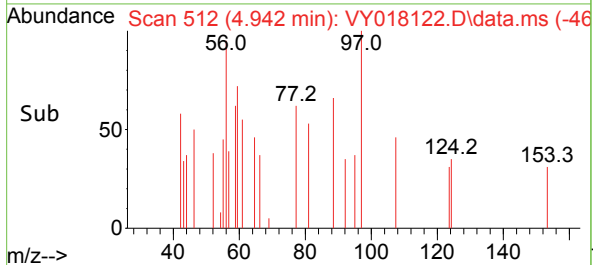
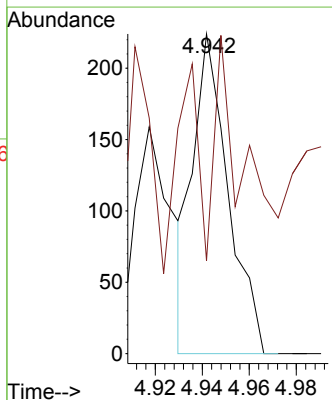
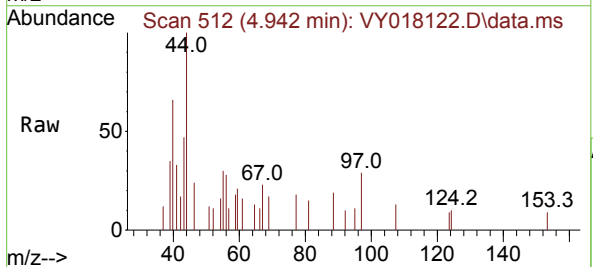
Instrument :  
 MSVOA\_Y  
 ClientSampleId :

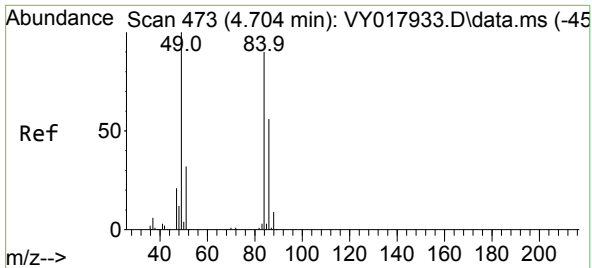
Tgt Ion:168 Resp: 261062  
 Ion Ratio Lower Upper  
 168 100  
 99 48.7 39.1 58.7



#11  
 Tert butyl alcohol  
 Concen: 1.371 ug/l  
 RT: 4.942 min Scan# 512  
 Delta R.T. -0.012 min  
 Lab File: VY018122.D  
 Acq: 02 May 2024 17:17

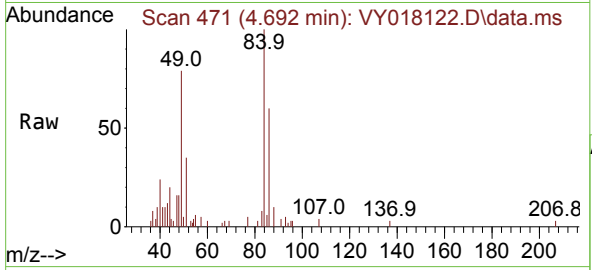
Tgt Ion: 59 Resp: 230  
 Ion Ratio Lower Upper  
 59 100  
 57 40.9 3.0 4.6#





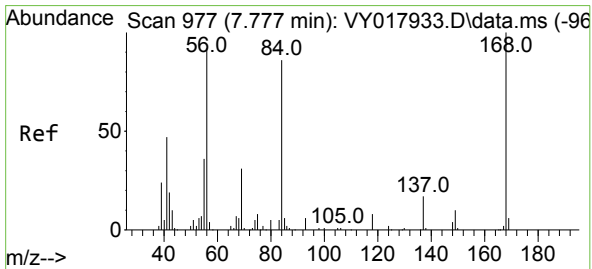
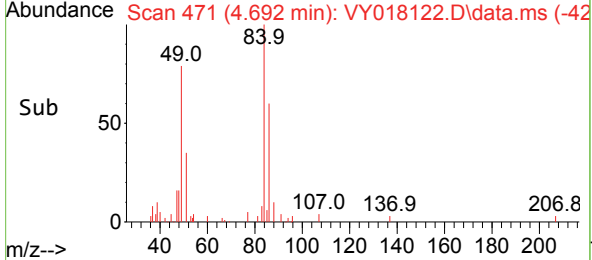
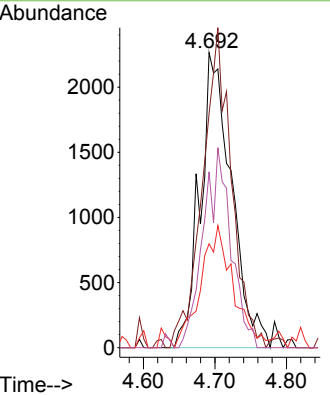
#20  
 Methylene Chloride  
 Concen: 2.509 ug/l  
 RT: 4.692 min Scan# 41  
 Delta R.T. -0.024 min  
 Lab File: VY018122.D  
 Acq: 02 May 2024 17:17

Instrument : MSVOA\_Y  
 ClientSampleId :

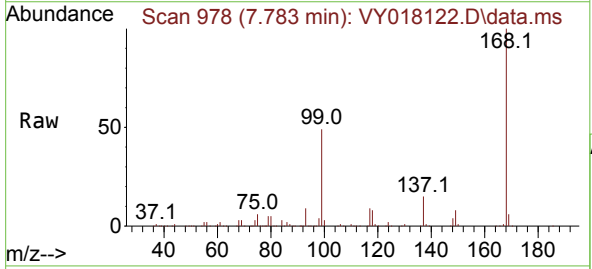


Tgt Ion: 84 Resp: 6893

Ion	Ratio	Lower	Upper
84	100		
49	79.4	84.4	126.6#
51	32.5	26.0	39.0
86	59.6	49.5	74.3

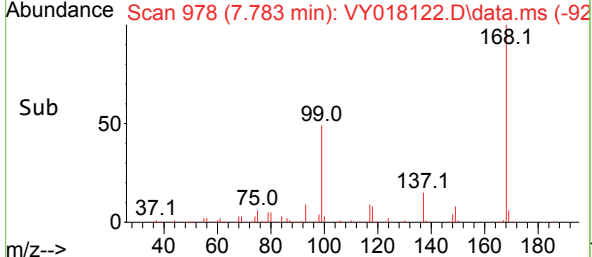
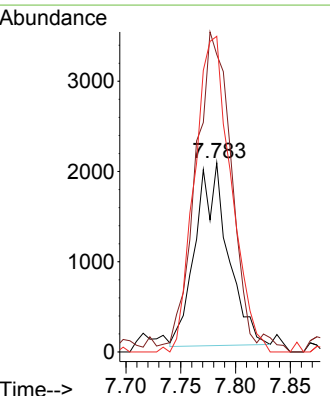


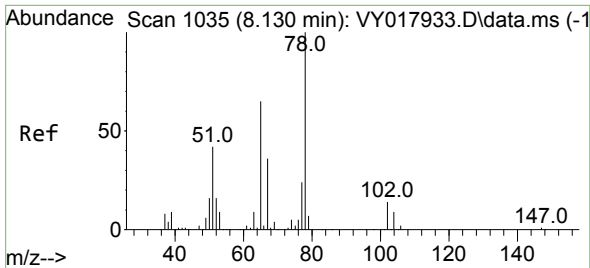
#31  
 Cyclohexane  
 Concen: 1.061 ug/l  
 RT: 7.783 min Scan# 978  
 Delta R.T. -0.000 min  
 Lab File: VY018122.D  
 Acq: 02 May 2024 17:17



Tgt Ion: 56 Resp: 4185

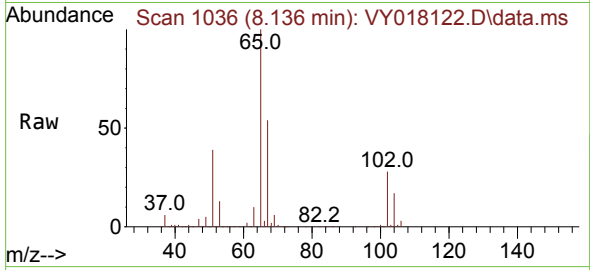
Ion	Ratio	Lower	Upper
56	100		
69	158.5	28.7	43.1#
84	173.8	77.7	116.5#



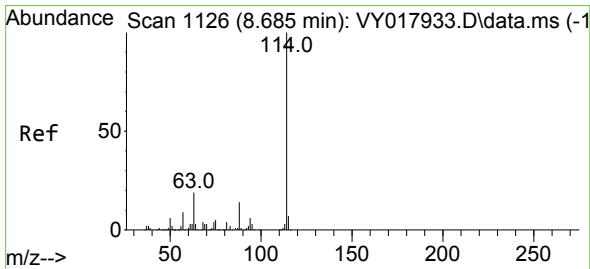
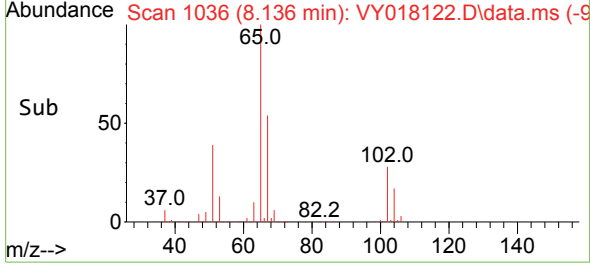
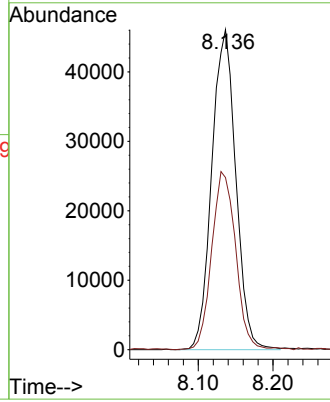


#33  
 1,2-Dichloroethane-d4  
 Concen: 49.982 ug/l  
 RT: 8.136 min Scan# 1036  
 Delta R.T. -0.006 min  
 Lab File: VY018122.D  
 Acq: 02 May 2024 17:17

Instrument : MSVOA\_Y  
 ClientSampleId :

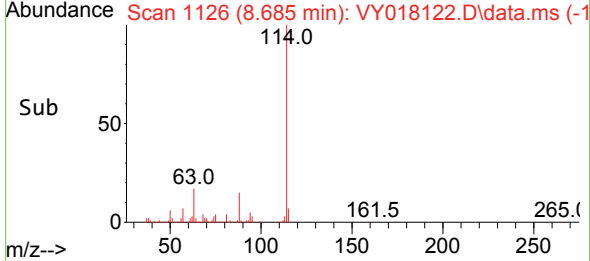
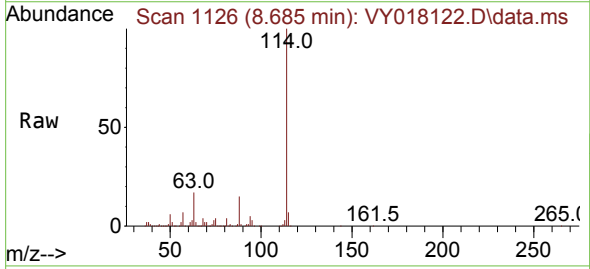
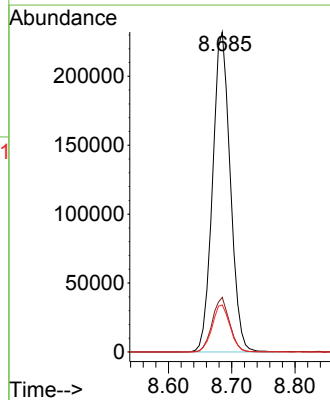


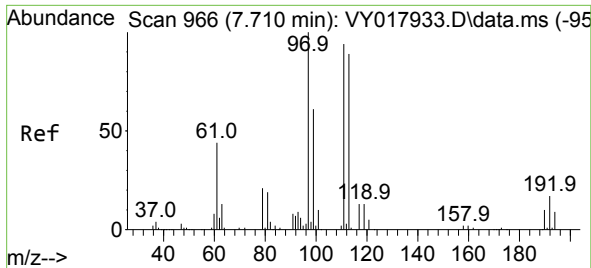
Tgt Ion: 65 Resp: 102852  
 Ion Ratio Lower Upper  
 65 100  
 67 55.4 0.0 109.6



#34  
 1,4-Difluorobenzene  
 Concen: 50.000 ug/l  
 RT: 8.685 min Scan# 1126  
 Delta R.T. -0.006 min  
 Lab File: VY018122.D  
 Acq: 02 May 2024 17:17

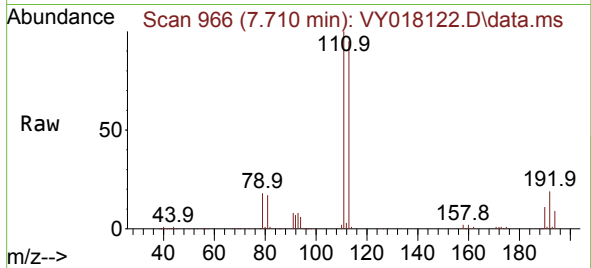
Tgt Ion: 114 Resp: 450061  
 Ion Ratio Lower Upper  
 114 100  
 63 17.1 0.0 35.0  
 88 14.7 0.0 27.2



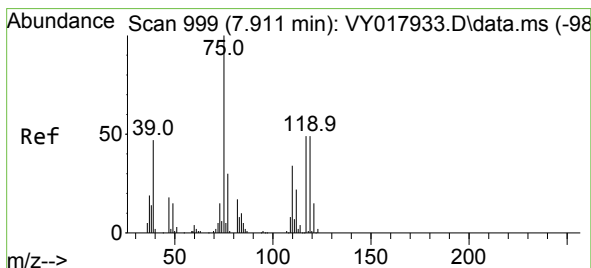
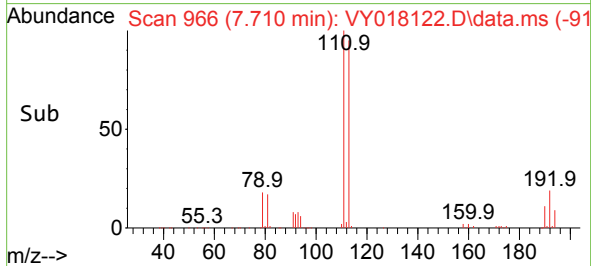
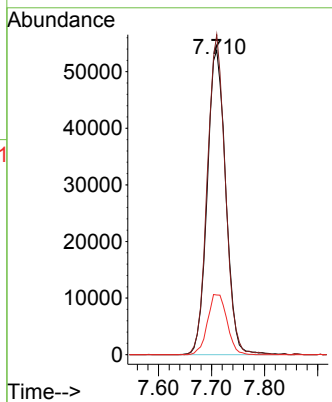


#35  
 Dibromofluoromethane  
 Concen: 50.415 ug/l  
 RT: 7.710 min Scan# 901  
 Delta R.T. -0.012 min  
 Lab File: VY018122.D  
 Acq: 02 May 2024 17:17

Instrument : MSVOA\_Y  
 ClientSampleId :

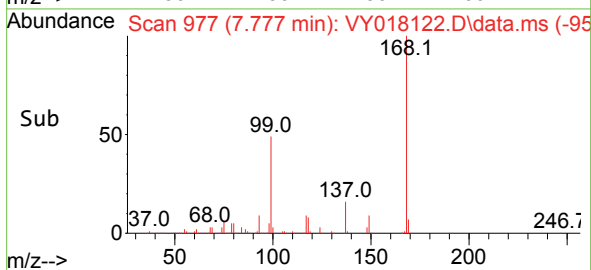
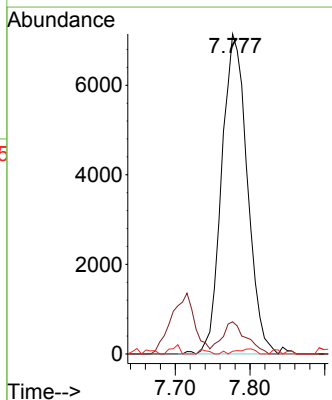
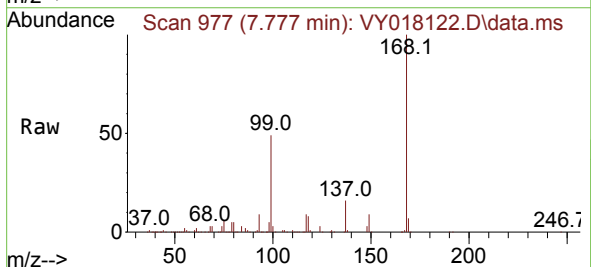


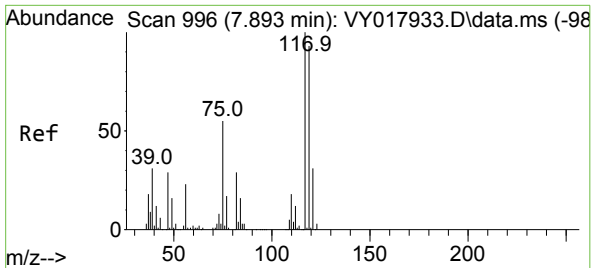
Tgt Ion:113 Resp: 130391  
 Ion Ratio Lower Upper  
 113 100  
 111 102.3 82.2 123.4  
 192 20.7 15.9 23.9



#36  
 1,1-Dichloropropene  
 Concen: 4.919 ug/l  
 RT: 7.777 min Scan# 977  
 Delta R.T. -0.140 min  
 Lab File: VY018122.D  
 Acq: 02 May 2024 17:17

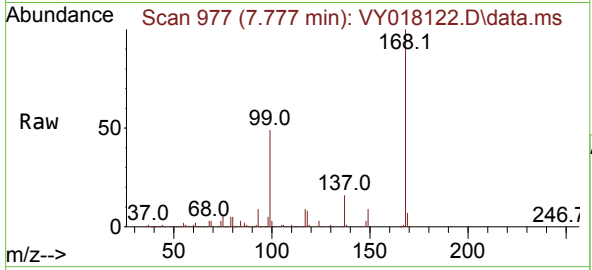
Tgt Ion: 75 Resp: 16982  
 Ion Ratio Lower Upper  
 75 100  
 110 9.5 19.0 57.0#  
 77 0.0 25.3 37.9#



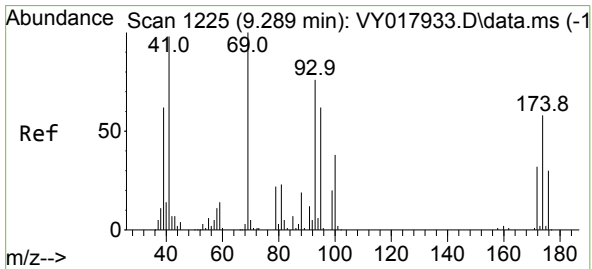
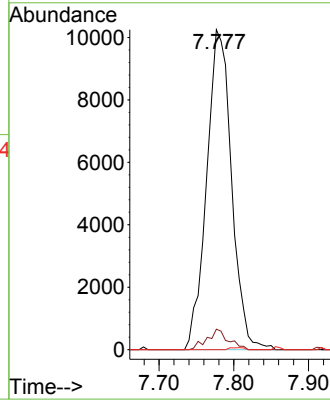
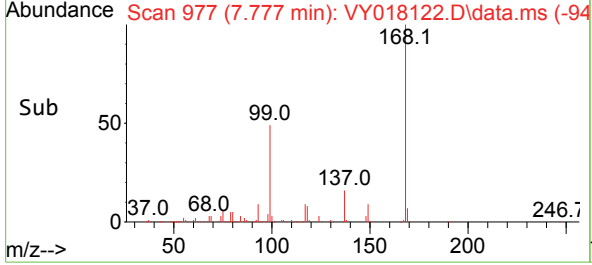


#38  
 Carbon Tetrachloride  
 Concen: 6.064 ug/l  
 RT: 7.777 min Scan# 91  
 Delta R.T. -0.128 min  
 Lab File: VY018122.D  
 Acq: 02 May 2024 17:17

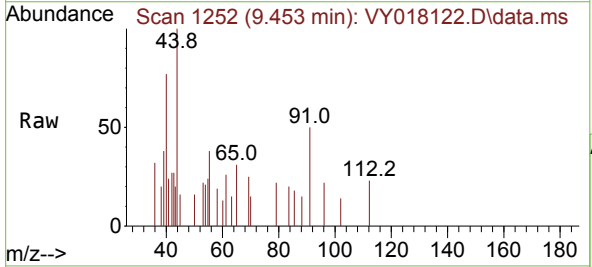
Instrument : MSVOA\_Y  
 ClientSampleId :



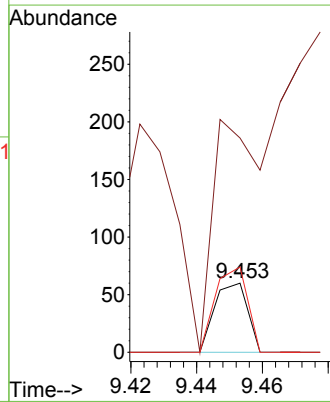
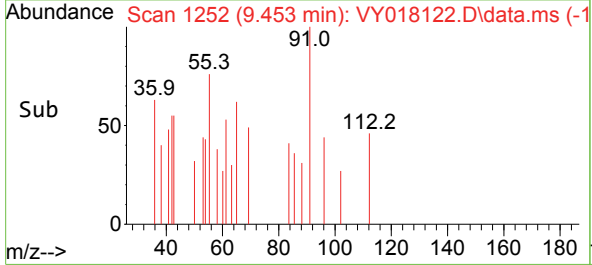
Tgt Ion:117 Resp: 23761  
 Ion Ratio Lower Upper  
 117 100  
 119 6.4 75.8 113.6#  
 121 0.0 24.0 36.0#

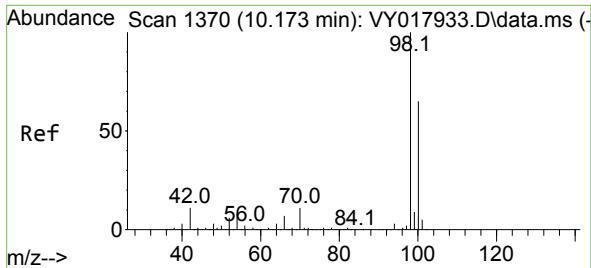


#49  
 1,4-Dioxane  
 Concen: 2.572 ug/l  
 RT: 9.453 min Scan# 1252  
 Delta R.T. 0.152 min  
 Lab File: VY018122.D  
 Acq: 02 May 2024 17:17



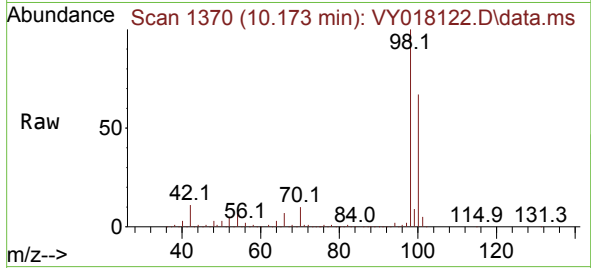
Tgt Ion: 88 Resp: 42  
 Ion Ratio Lower Upper  
 88 100  
 43 0.0 0.0 0.0  
 58 119.0 49.3 73.9#



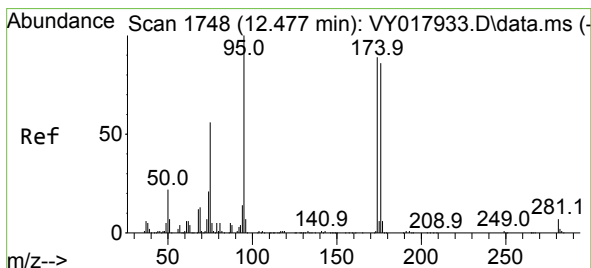
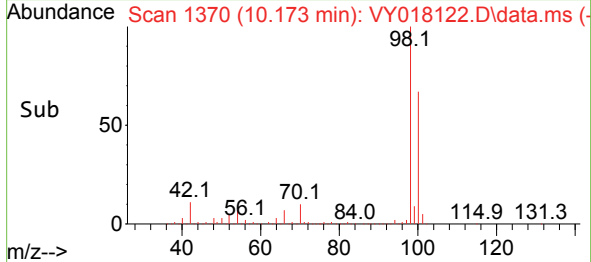
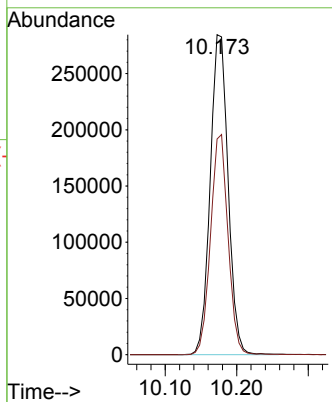


#50  
 Toluene-d8  
 Concen: 48.950 ug/l  
 RT: 10.173 min Scan# 11  
 Delta R.T. -0.006 min  
 Lab File: VY018122.D  
 Acq: 02 May 2024 17:17

Instrument :  
 MSVOA\_Y  
 ClientSampleId :

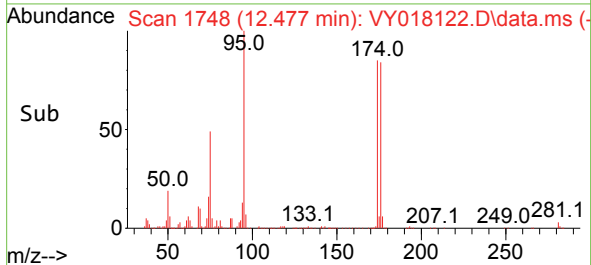
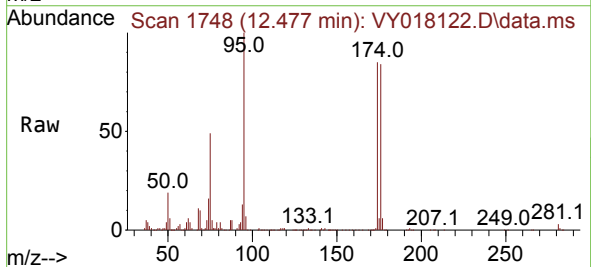
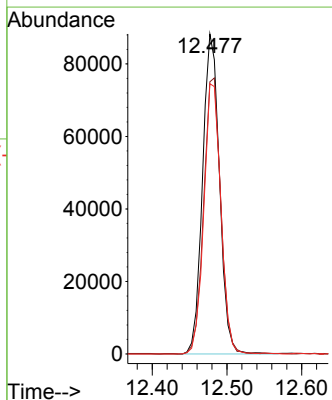


Tgt Ion: 98 Resp: 494248  
 Ion Ratio Lower Upper  
 98 100  
 100 67.2 52.0 78.0

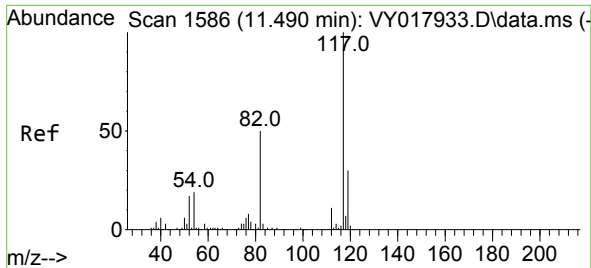


#62  
 4-Bromofluorobenzene  
 Concen: 39.895 ug/l  
 RT: 12.477 min Scan# 1748  
 Delta R.T. -0.006 min  
 Lab File: VY018122.D  
 Acq: 02 May 2024 17:17

Tgt Ion: 95 Resp: 138626  
 Ion Ratio Lower Upper  
 95 100  
 174 87.2 0.0 175.6  
 176 85.0 0.0 171.4

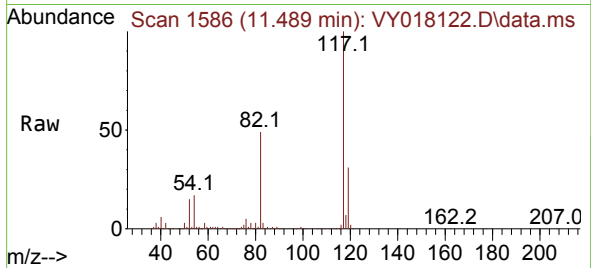




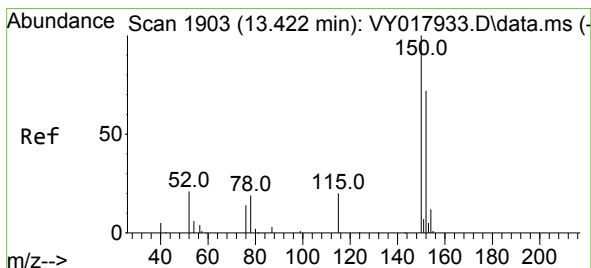
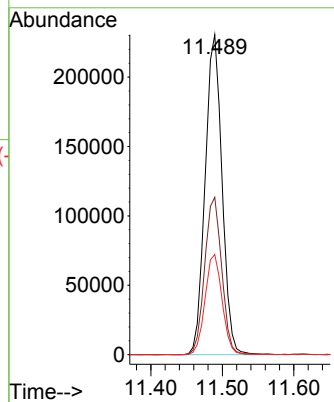
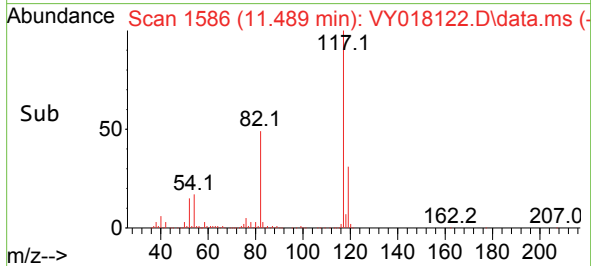


#63  
 Chlorobenzene-d5  
 Concen: 50.000 ug/l  
 RT: 11.489 min Scan# 11  
 Delta R.T. 0.000 min  
 Lab File: VY018122.D  
 Acq: 02 May 2024 17:17

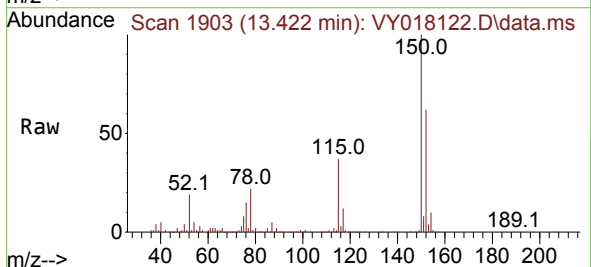
Instrument :  
 MSVOA\_Y  
 ClientSampleId :



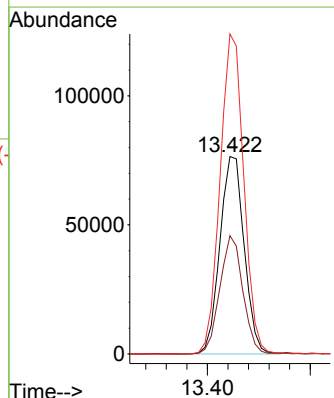
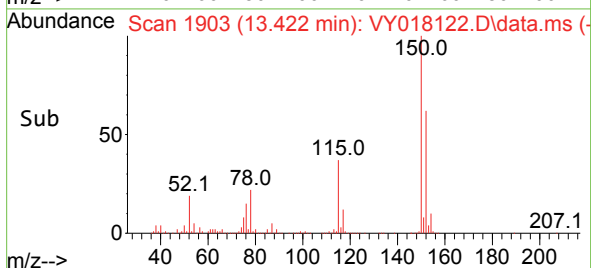
Tgt Ion:117 Resp: 378569  
 Ion Ratio Lower Upper  
 117 100  
 82 49.2 42.4 63.6  
 119 31.3 25.9 38.9

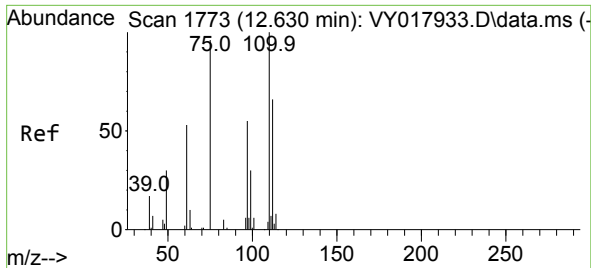


#72  
 1,4-Dichlorobenzene-d4  
 Concen: 50.000 ug/l  
 RT: 13.422 min Scan# 1903  
 Delta R.T. -0.006 min  
 Lab File: VY018122.D  
 Acq: 02 May 2024 17:17



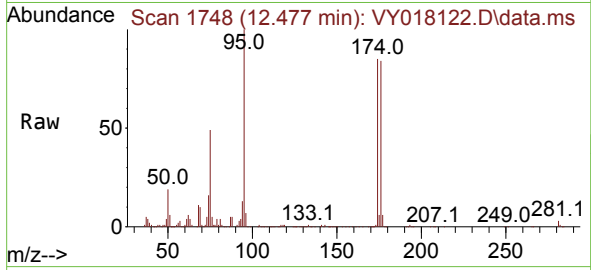
Tgt Ion:152 Resp: 125252  
 Ion Ratio Lower Upper  
 152 100  
 115 56.9 28.2 84.7  
 150 157.9 0.0 345.6



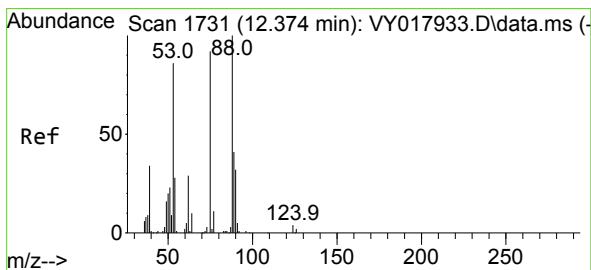
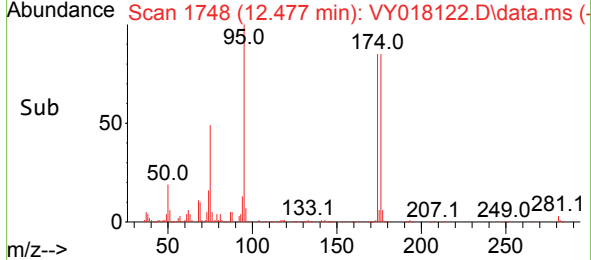
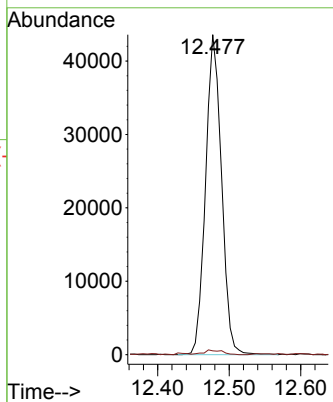


#76  
 1,2,3-Trichloropropane  
 Concen: 64.242 ug/l  
 RT: 12.477 min Scan# 1748  
 Delta R.T. -0.159 min  
 Lab File: VY018122.D  
 Acq: 02 May 2024 17:17

Instrument : MSVOA\_Y  
 ClientSampleId :



Tgt Ion: 75 Resp: 67530  
 Ion Ratio Lower Upper  
 75 100  
 77 1.7 0.0 0.0#



#81  
 trans-1,4-Dichloro-2-butene  
 Concen: 117.034 ug/l  
 RT: 12.477 min Scan# 1748  
 Delta R.T. 0.098 min  
 Lab File: VY018122.D  
 Acq: 02 May 2024 17:17

Tgt Ion: 75 Resp: 67530  
 Ion Ratio Lower Upper  
 75 100  
 53 0.2 66.8 100.2#  
 89 0.0 35.8 53.6#

