

Data Path : Z:\voasrv\HPCHEM1\MSVOA_Y\Data\VY050225\
 Data File : VY022139.D
 Acq On : 02 May 2025 19:09
 Operator : SY/MD
 Sample : Q1937-08
 Misc : 7.13g/5.0mL/MSVOA_Y/SOIL/A
 ALS Vial : 22 Sample Multiplier: 1

Instrument :
 MSVOA_Y
 ClientSampleId :
 LARGE-PILE-D

Integration Parameters: RTEINT.P

Integrator: RTE
 Smoothing : ON Filtering: 5
 Sampling : 1 Min Area: 3 % of largest Peak
 Start Thrs: 0.2 Max Peaks: 100
 Stop Thrs : 0 Peak Location: TOP

If leading or trailing edge < 100 prefer < Baseline drop else tangent >
 Peak separation: 5

Method : Z:\voasrv\HPCHEM1\MSVOA_Y\methods\82Y042225S.M
 Title : SW846 8260

Signal : TIC: VY022139.D\data.ms

peak #	R.T. min	first scan	max scan	last scan	PK TY	peak height	corr. area	corr. % max.	% of total
1	4.604	465	473	485	rVB4	8553	27130	1.34%	0.270%
2	7.628	960	969	975	rBV	303218	717388	35.42%	7.139%
3	7.707	975	982	997	rVB	452428	1051614	51.92%	10.465%
4	8.061	1031	1040	1052	rBV	211382	477576	23.58%	4.752%
5	8.609	1121	1130	1142	rBV	769167	1482126	73.18%	14.749%
6	10.103	1367	1375	1397	rBV	1227794	2025339	100.00%	20.154%
7	11.414	1582	1590	1604	rBV	1067770	1698816	83.88%	16.905%
8	12.407	1745	1753	1766	rBV	718186	1193564	58.93%	11.877%
9	13.346	1894	1907	1916	rBV	810435	1230147	60.74%	12.241%
10	13.883	1988	1995	2002	rBV	90028	145453	7.18%	1.447%

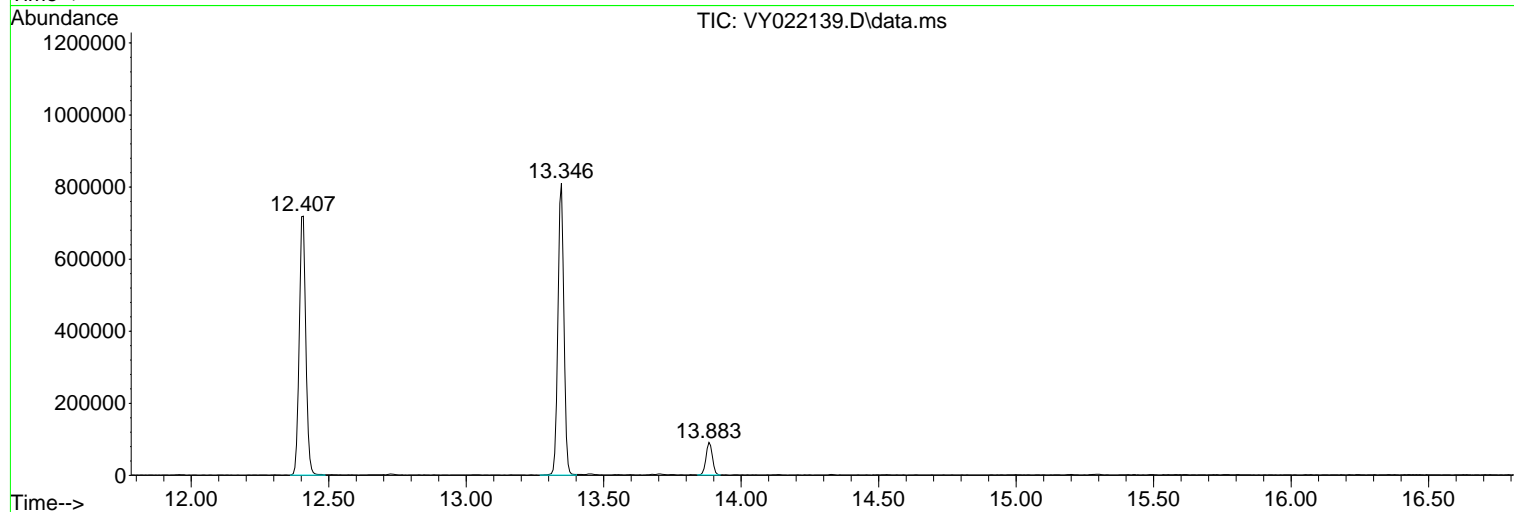
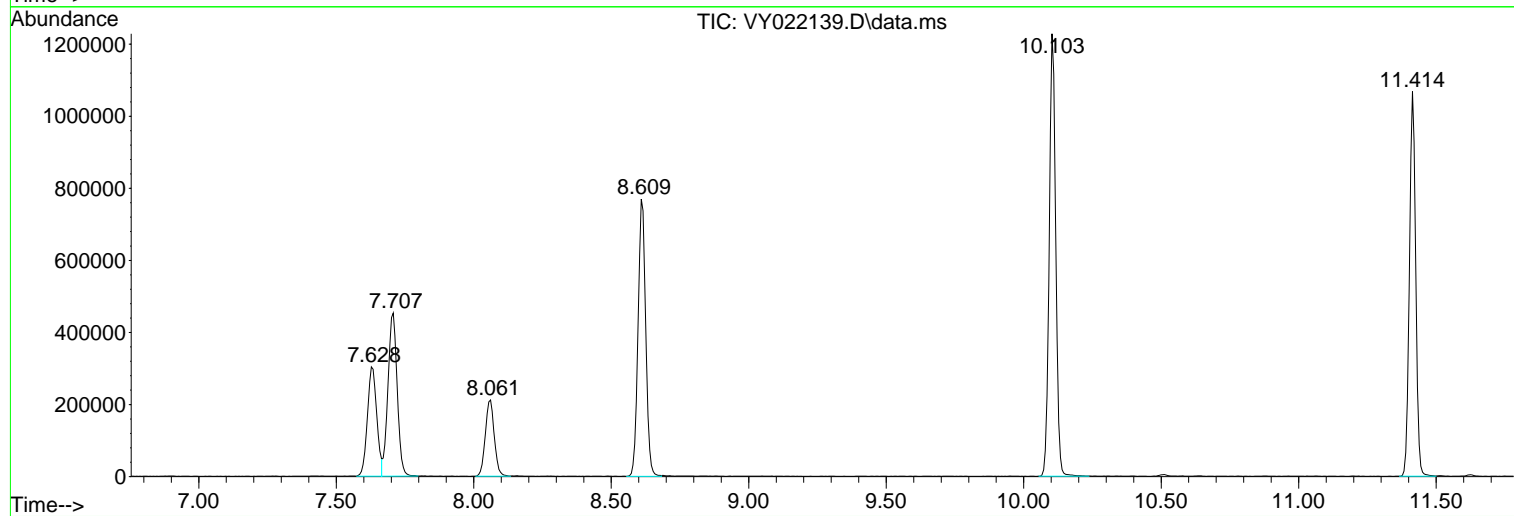
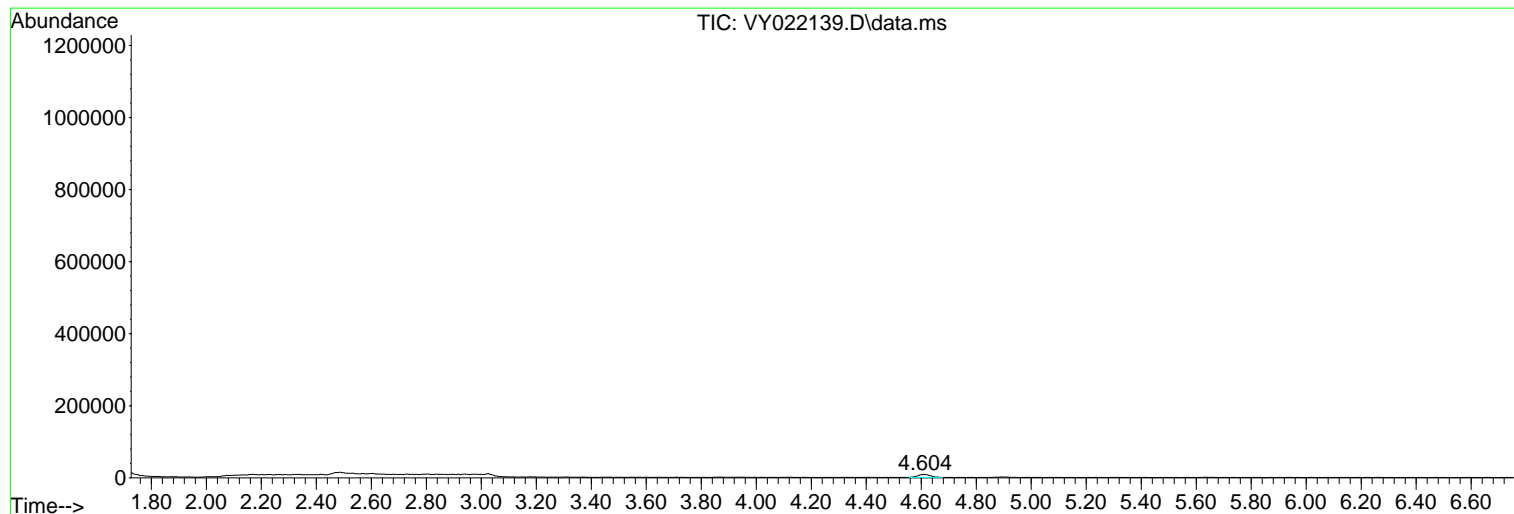
Sum of corrected areas: 10049153

Data Path : Z:\voasrv\HPCHEM1\MSVOA_Y\Data\VY050225\
Data File : VY022139.D
Acq On : 02 May 2025 19:09
Operator : SY/MD
Sample : Q1937-08
Misc : 7.13g/5.0mL/MSVOA_Y/SOIL/A
ALS Vial : 22 Sample Multiplier: 1

Instrument :
MSVOA_Y
ClientSampleId :
LARGE-PILE-D

Quant Method : Z:\voasrv\HPCHEM1\MSVOA_Y\methods\82Y042225S.M
Quant Title : SW846 8260

TIC Library : C:\Database\NIST0.L
TIC Integration Parameters: LSCINT.P



Library Search Compound Report

Data Path : Z:\voasrv\HPCHEM1\MSVOA_Y\Data\VY050225\
Data File : VY022139.D
Acq On : 02 May 2025 19:09
Operator : SY/MD
Sample : Q1937-08
Misc : 7.13g/5.0mL/MSVOA_Y/SOIL/A
ALS Vial : 22 Sample Multiplier: 1

Instrument :
MSVOA_Y
ClientSampleId :
LARGE-PILE-D

Quant Method : Z:\voasrv\HPCHEM1\MSVOA_Y\methods\82Y042225S.M
Quant Title : SW846 8260

TIC Library : C:\Database\NIST20.L
TIC Integration Parameters: LSCINT.P

No Library Search Compounds Detected

Data Path : Z:\voasrv\HPCHEM1\MSVOA_Y\Data\VY050225\
Data File : VY022139.D
Acq On : 02 May 2025 19:09
Operator : SY/MD
Sample : Q1937-08
Misc : 7.13g/5.0mL/MSVOA_Y/SOIL/A
ALS Vial : 22 Sample Multiplier: 1

Instrument :
MSVOA_Y
ClientSampleId :
LARGE-PILE-D

Quant Method : Z:\voasrv\HPCHEM1\MSVOA_Y\methods\82Y042225S.M
Quant Title : SW846 8260

TIC Library : C:\Database\NIST0.L
TIC Integration Parameters: LSCINT.P

TIC Top Hit name	RT	EstConc	Units	Response	#	RT	Resp	Conc
------------------	----	---------	-------	----------	---	----	------	------
