

Data Path : Z:\voasrv\HPCHEM1\MSVOA_Y\Data\VY050422\
 Data File : VY008607.D
 Acq On : 04 May 2022 13:16
 Operator : KP/MD
 Sample : N2616-07RE
 Misc : 5.00g/5.0mL/MSVOA_Y/SOIL
 ALS Vial : 9 Sample Multiplier: 1

Instrument :
 MSVOA_Y
 ClientSampleId :
 MH-20SRE

Quant Time: May 05 04:34:45 2022
 Quant Method : Z:\voasrv\HPCHEM1\MSVOA_Y\methods\82Y050222S.M
 Quant Title : SW846 8260
 QLast Update : Tue May 03 01:57:20 2022
 Response via : Initial Calibration

Compound	R.T.	QIon	Response	Conc	Units	Dev(Min)

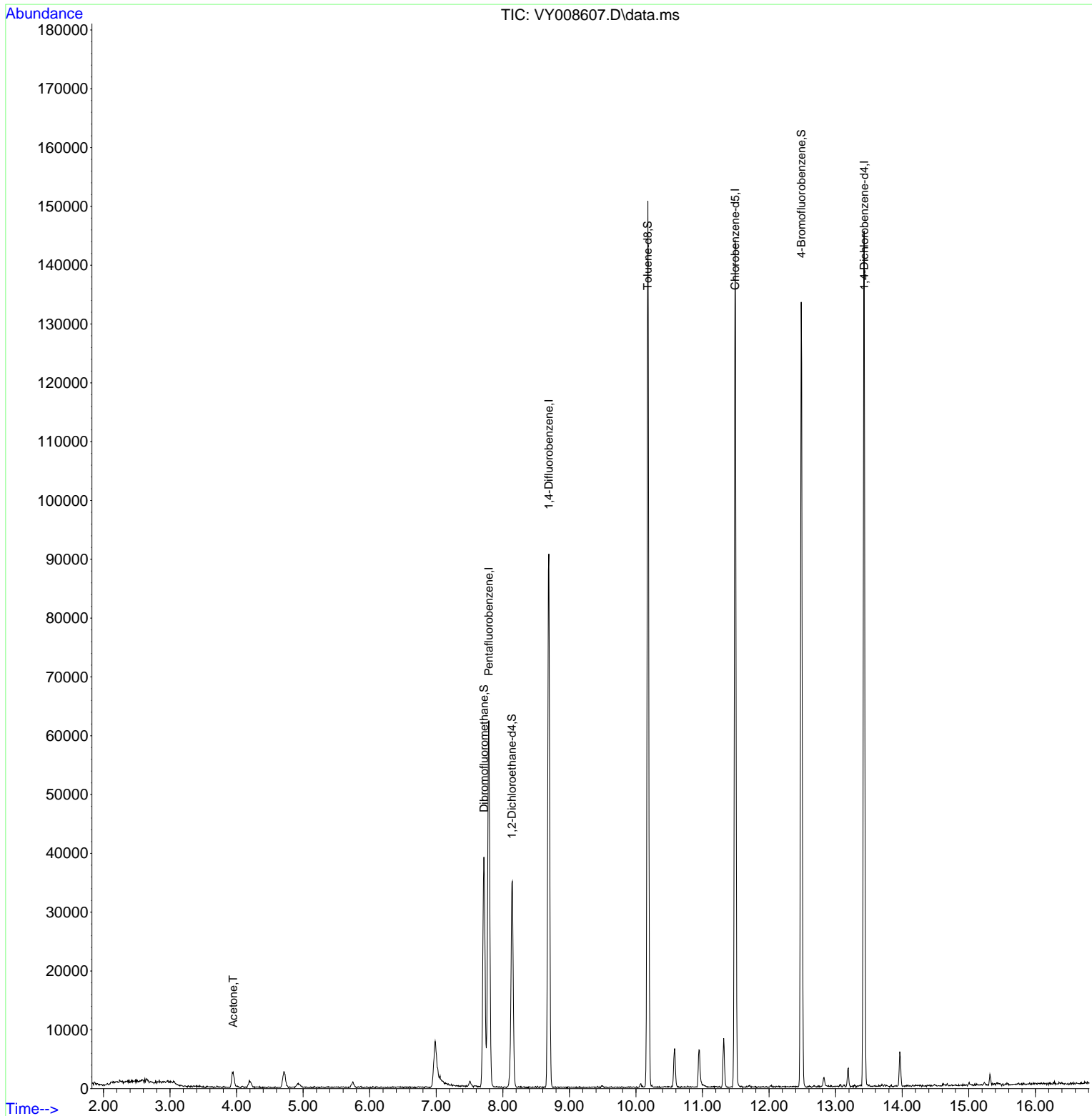
Internal Standards						
1) Pentafluorobenzene	7.789	168	52532	50.000	ug/l	0.00
34) 1,4-Difluorobenzene	8.691	114	85363	50.000	ug/l	0.00
63) Chlorobenzene-d5	11.490	117	86374	50.000	ug/l	0.00
72) 1,4-Dichlorobenzene-d4	13.428	152	40648	50.000	ug/l	0.00
System Monitoring Compounds						
33) 1,2-Dichloroethane-d4	8.137	65	26731	52.355	ug/l	0.00
Spiked Amount	50.000	Range	50 - 163	Recovery	=	104.720%
35) Dibromofluoromethane	7.716	113	27829	49.268	ug/l	0.00
Spiked Amount	50.000	Range	54 - 147	Recovery	=	98.540%
50) Toluene-d8	10.179	98	100780	50.361	ug/l	0.00
Spiked Amount	50.000	Range	49 - 140	Recovery	=	100.720%
62) 4-Bromofluorobenzene	12.483	95	34576	47.141	ug/l	0.00
Spiked Amount	50.000	Range	25 - 144	Recovery	=	94.280%
Target Compounds						
16) Acetone	3.948	43	4636	42.142	ug/l #	82

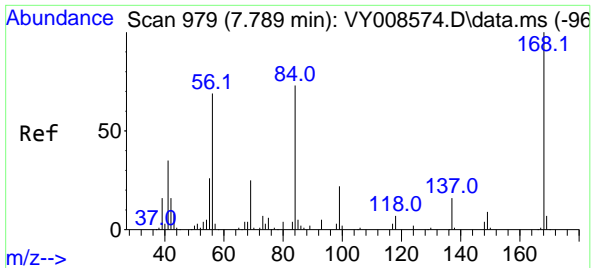
(#) = qualifier out of range (m) = manual integration (+) = signals summed

Data Path : Z:\voasrv\HPCHEM1\MSVOA_Y\Data\VY050422\
 Data File : VY008607.D
 Acq On : 04 May 2022 13:16
 Operator : KP/MD
 Sample : N2616-07RE
 Misc : 5.00g/5.0mL/MSVOA_Y/SOIL
 ALS Vial : 9 Sample Multiplier: 1

Instrument :
 MSVOA_Y
 ClientSampleId :
 MH-20SRE

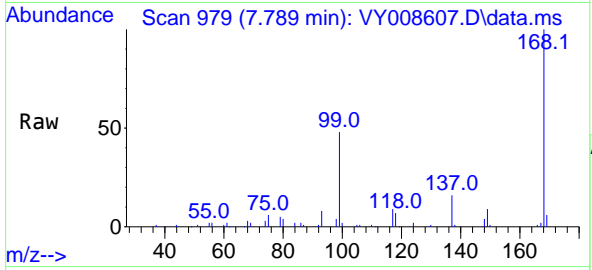
Quant Time: May 05 04:34:45 2022
 Quant Method : Z:\voasrv\HPCHEM1\MSVOA_Y\methods\82Y050222S.M
 Quant Title : SW846 8260
 QLast Update : Tue May 03 01:57:20 2022
 Response via : Initial Calibration



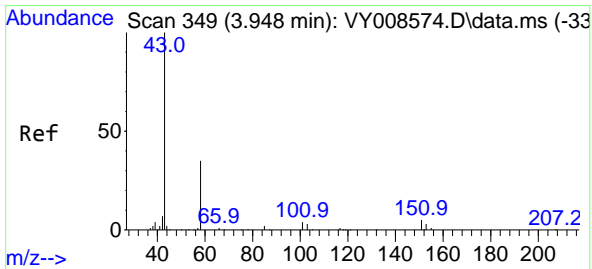
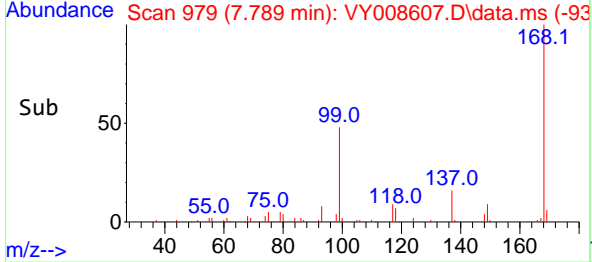
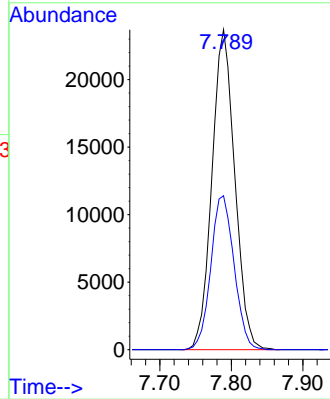


#1
 Pentafluorobenzene
 Concen: 50.000 ug/l
 RT: 7.789 min Scan# 91
 Delta R.T. 0.000 min
 Lab File: VY008607.D
 Acq: 04 May 2022 13:16

Instrument :
 MSVOA_Y
 ClientSampleId :
 MH-20SRE

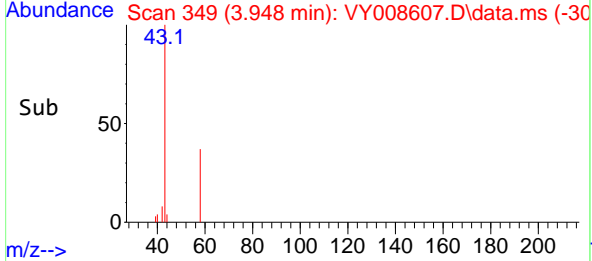
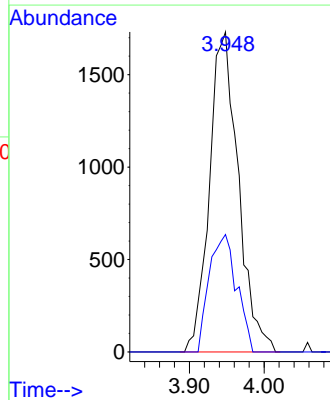
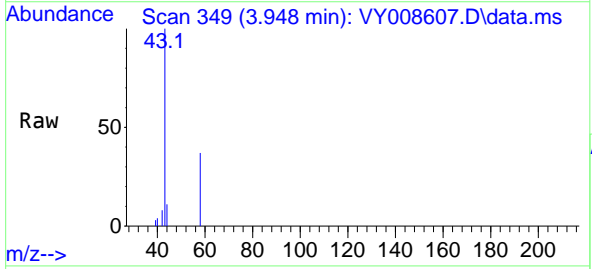


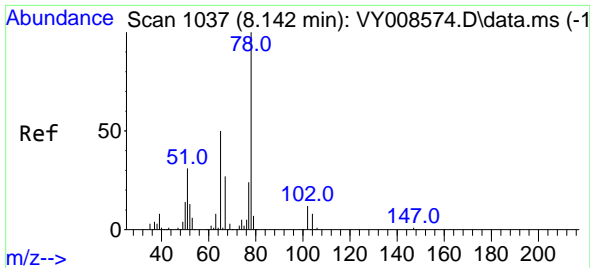
Tgt Ion:168 Resp: 52532
 Ion Ratio Lower Upper
 168 100
 99 48.1 46.9 70.3



#16
 Acetone
 Concen: 42.142 ug/l
 RT: 3.948 min Scan# 349
 Delta R.T. 0.000 min
 Lab File: VY008607.D
 Acq: 04 May 2022 13:16

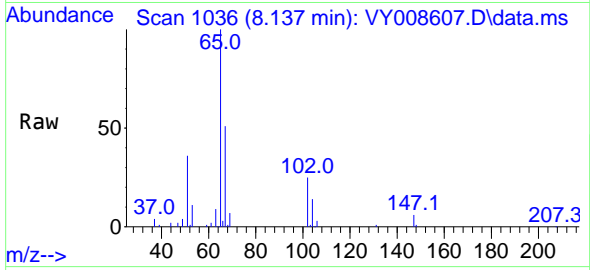
Tgt Ion: 43 Resp: 4636
 Ion Ratio Lower Upper
 43 100
 58 36.7 22.0 33.0#



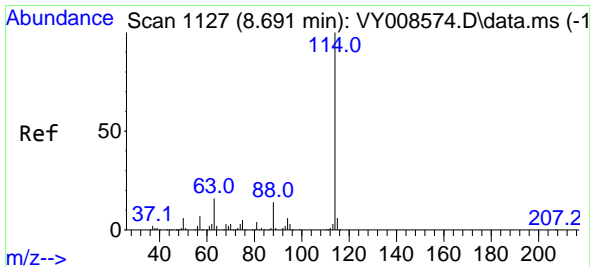
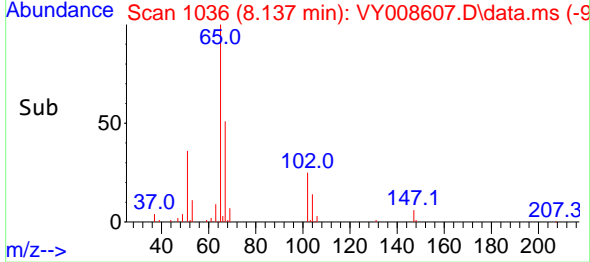
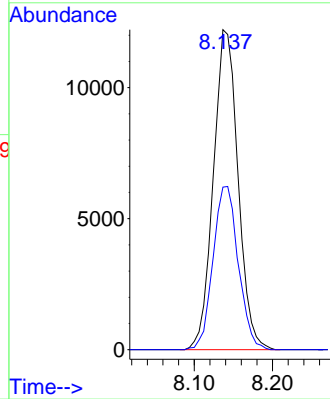


#33
 1,2-Dichloroethane-d4
 Concen: 52.355 ug/l
 RT: 8.137 min Scan# 1036
 Delta R.T. -0.006 min
 Lab File: VY008607.D
 Acq: 04 May 2022 13:16

Instrument : MSVOA_Y
 ClientSampleId : MH-20SRE

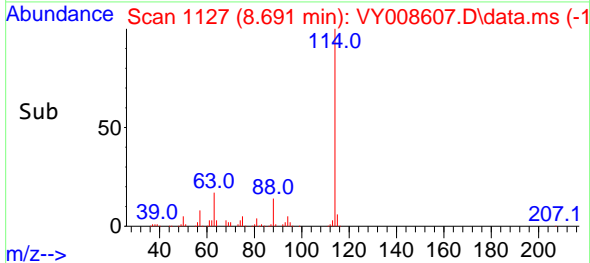
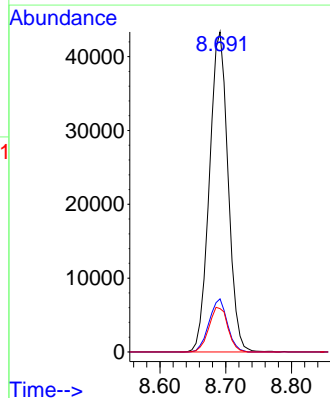
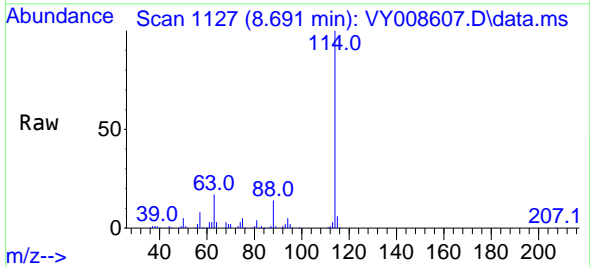


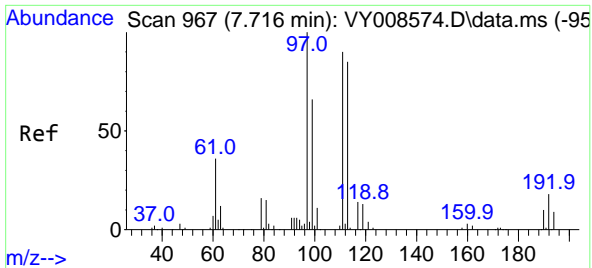
Tgt Ion: 65 Resp: 26731
 Ion Ratio Lower Upper
 65 100
 67 52.2 0.0 99.4



#34
 1,4-Difluorobenzene
 Concen: 50.000 ug/l
 RT: 8.691 min Scan# 1127
 Delta R.T. 0.000 min
 Lab File: VY008607.D
 Acq: 04 May 2022 13:16

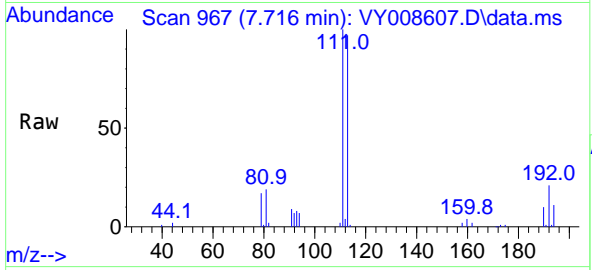
Tgt Ion: 114 Resp: 85363
 Ion Ratio Lower Upper
 114 100
 63 16.6 0.0 43.2
 88 13.6 0.0 31.8



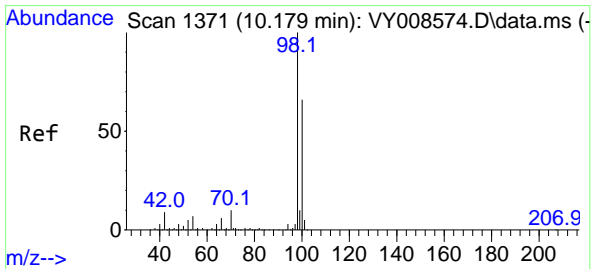
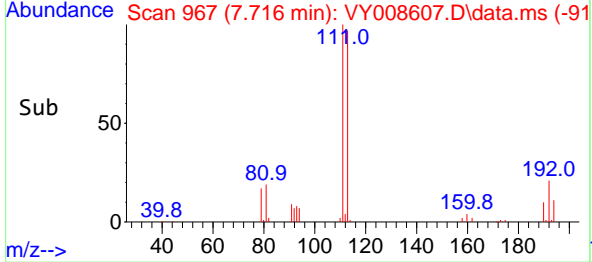
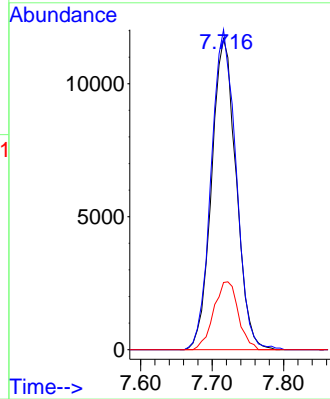


#35
 Dibromofluoromethane
 Concen: 49.268 ug/l
 RT: 7.716 min Scan# 90
 Delta R.T. 0.000 min
 Lab File: VY008607.D
 Acq: 04 May 2022 13:16

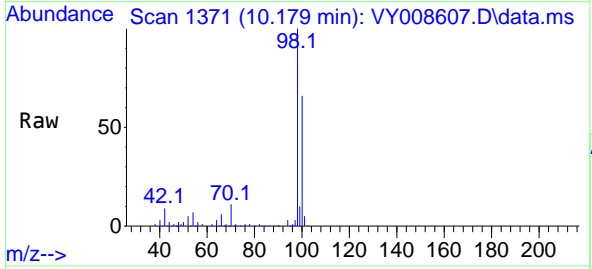
Instrument :
 MSVOA_Y
 ClientSampleId :
 MH-20SRE



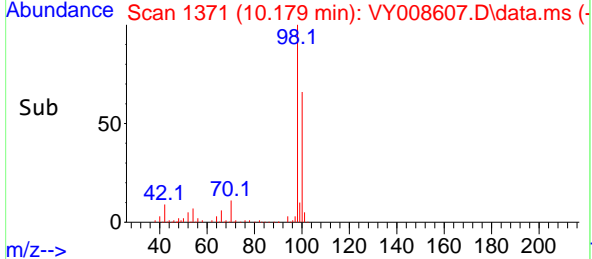
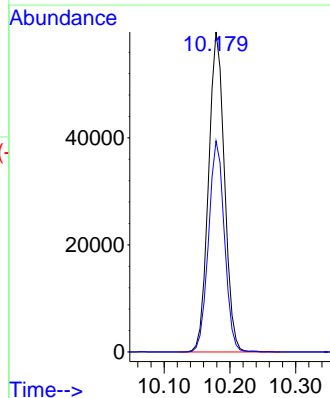
Tgt Ion:113 Resp: 27829
 Ion Ratio Lower Upper
 113 100
 111 104.4 82.6 124.0
 192 21.8 17.6 26.4

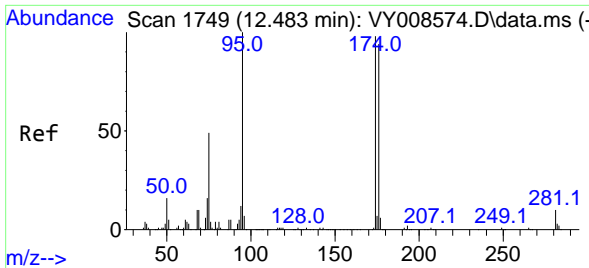


#50
 Toluene-d8
 Concen: 50.361 ug/l
 RT: 10.179 min Scan# 1371
 Delta R.T. 0.000 min
 Lab File: VY008607.D
 Acq: 04 May 2022 13:16



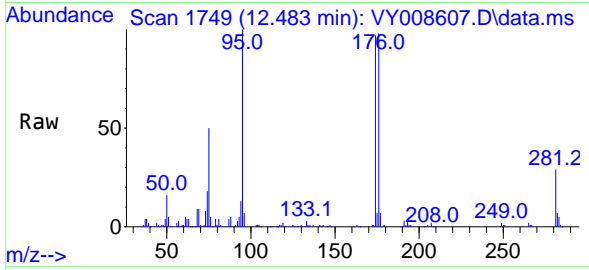
Tgt Ion: 98 Resp: 100780
 Ion Ratio Lower Upper
 98 100
 100 65.7 50.2 75.2



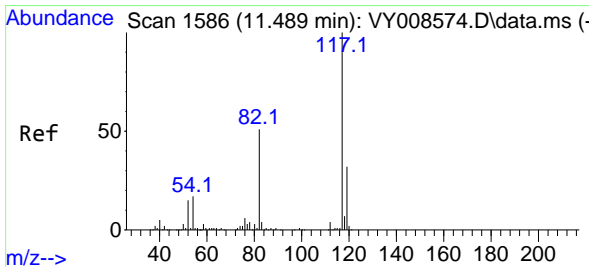
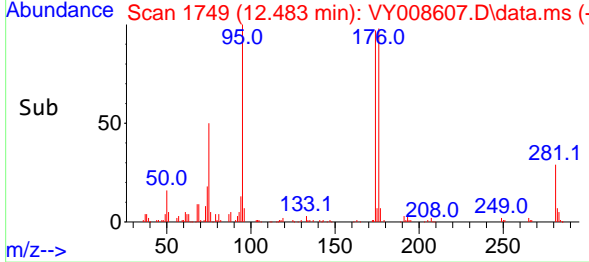
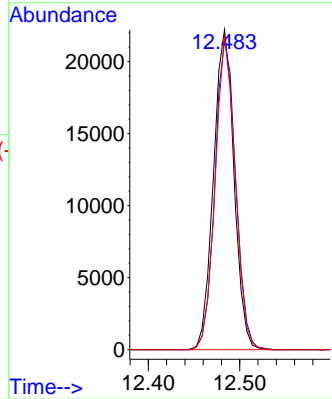


#62
 4-Bromofluorobenzene
 Concen: 47.141 ug/l
 RT: 12.483 min Scan# 11
 Delta R.T. 0.000 min
 Lab File: VY008607.D
 Acq: 04 May 2022 13:16

Instrument :
 MSVOA_Y
 ClientSampleId :
 MH-20SRE

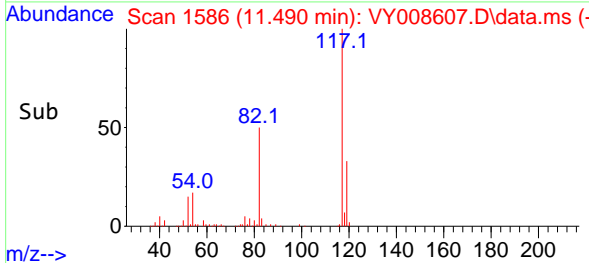
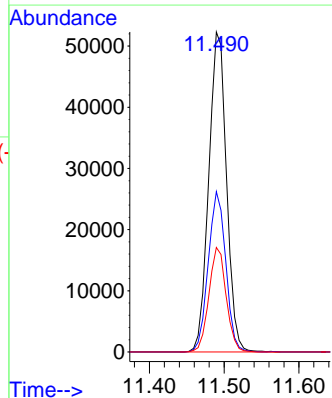
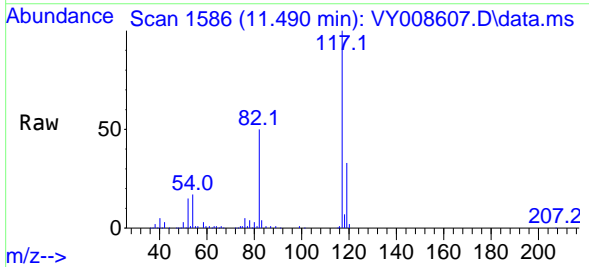


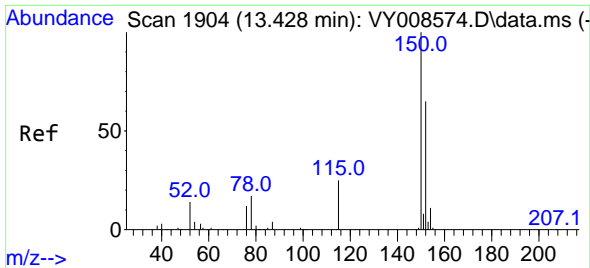
Tgt Ion: 95 Resp: 34576
 Ion Ratio Lower Upper
 95 100
 174 97.8 0.0 177.0
 176 95.6 0.0 175.8



#63
 Chlorobenzene-d5
 Concen: 50.000 ug/l
 RT: 11.490 min Scan# 1586
 Delta R.T. 0.000 min
 Lab File: VY008607.D
 Acq: 04 May 2022 13:16

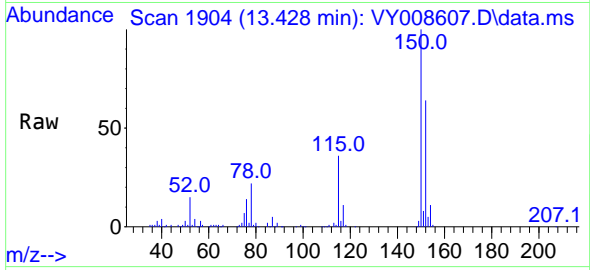
Tgt Ion: 117 Resp: 86374
 Ion Ratio Lower Upper
 117 100
 82 50.1 43.0 64.4
 119 32.7 25.4 38.0





#72
 1,4-Dichlorobenzene-d4
 Concen: 50.000 ug/l
 RT: 13.428 min Scan# 1904
 Delta R.T. 0.000 min
 Lab File: VY008607.D
 Acq: 04 May 2022 13:16

Instrument :
 MSVOA_Y
 ClientSampleId :
 MH-20SRE



Tgt Ion:152 Resp: 40648
 Ion Ratio Lower Upper
 152 100
 115 54.0 28.2 84.7
 150 153.7 0.0 347.6

