

Data Path : Z:\voasrv\HPCHEM1\MSVOA_Y\Data\VY050625\
 Data File : VY022178.D
 Acq On : 06 May 2025 13:03
 Operator : SY/MD
 Sample : Q1914-12
 Misc : 7.92g/5.0mL/MSVOA_Y/SOIL/A
 ALS Vial : 10 Sample Multiplier: 1

Instrument :
 MSVOA_Y
 ClientSampleId :
 SS-9

Quant Time: May 07 04:34:47 2025
 Quant Method : Z:\voasrv\HPCHEM1\MSVOA_Y\methods\82Y042225S.M
 Quant Title : SW846 8260
 QLast Update : Wed Apr 23 02:30:30 2025
 Response via : Initial Calibration

Compound	R.T.	QIon	Response	Conc	Units	Dev(Min)
Internal Standards						
1) Pentafluorobenzene	7.713	168	197156	50.000	ug/l	0.00
34) 1,4-Difluorobenzene	8.616	114	383574	50.000	ug/l	0.00
63) Chlorobenzene-d5	11.420	117	339845	50.000	ug/l	0.00
72) 1,4-Dichlorobenzene-d4	13.346	152	120680	50.000	ug/l	0.00
System Monitoring Compounds						
33) 1,2-Dichloroethane-d4	8.061	65	102619	56.350	ug/l	0.00
Spiked Amount	50.000	Range	50 - 163	Recovery	=	112.700%
35) Dibromofluoromethane	7.634	113	131757	51.994	ug/l	0.00
Spiked Amount	50.000	Range	54 - 147	Recovery	=	103.980%
50) Toluene-d8	10.109	98	470465	49.245	ug/l	0.00
Spiked Amount	50.000	Range	58 - 134	Recovery	=	98.500%
62) 4-Bromofluorobenzene	12.408	95	124718	38.779	ug/l	0.00
Spiked Amount	50.000	Range	30 - 143	Recovery	=	77.560%

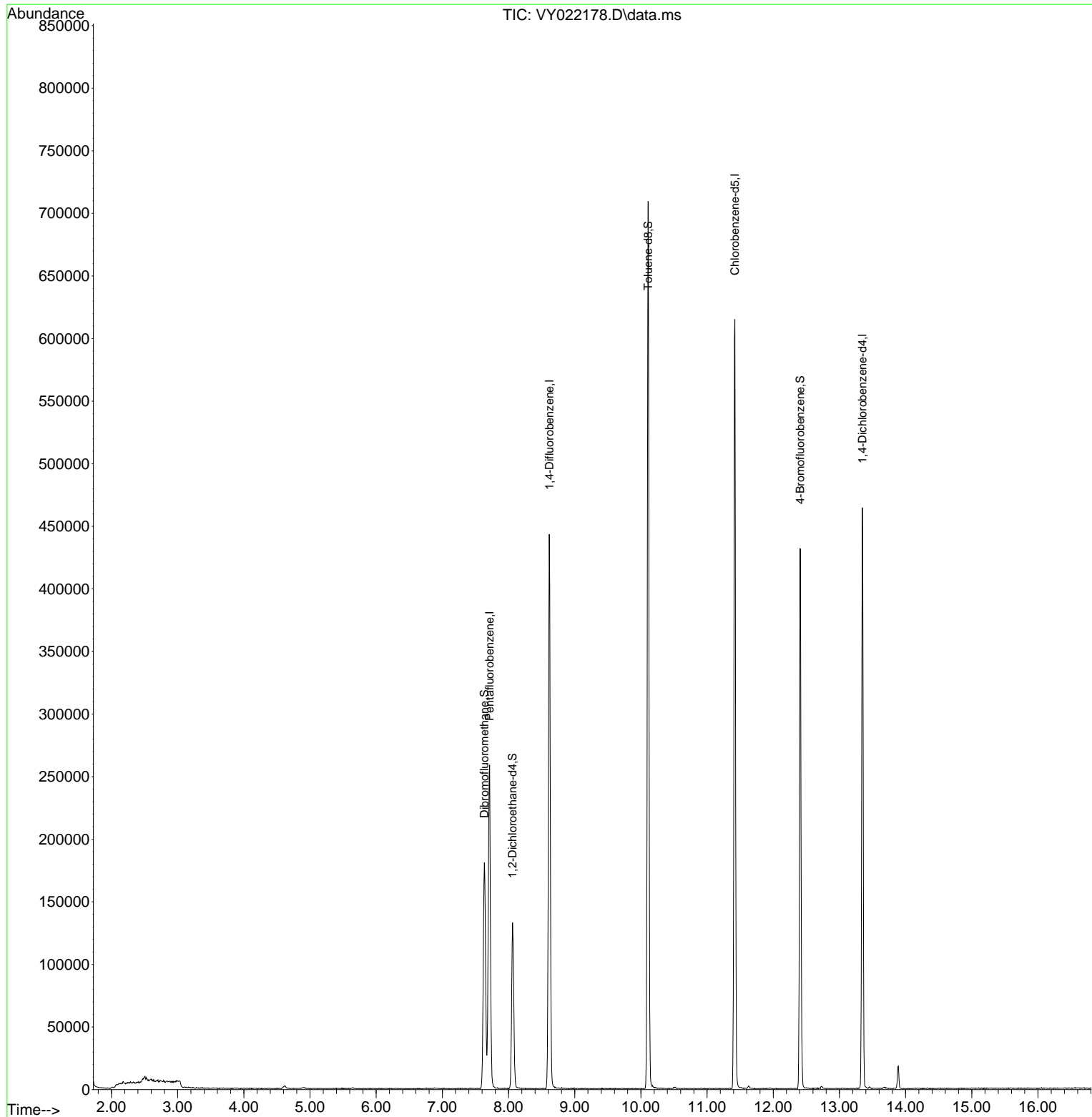
Target Compounds Qvalue

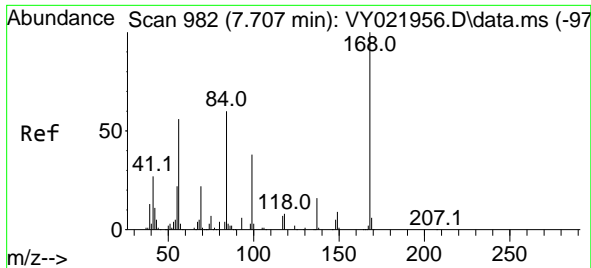
(#) = qualifier out of range (m) = manual integration (+) = signals summed

Data Path : Z:\voasrv\HPCHEM1\MSVOA_Y\Data\VY050625\
 Data File : VY022178.D
 Acq On : 06 May 2025 13:03
 Operator : SY/MD
 Sample : Q1914-12
 Misc : 7.92g/5.0mL/MSVOA_Y/SOIL/A
 ALS Vial : 10 Sample Multiplier: 1

Instrument :
 MSVOA_Y
 ClientSampleId :
 SS-9

Quant Time: May 07 04:34:47 2025
 Quant Method : Z:\voasrv\HPCHEM1\MSVOA_Y\methods\82Y042225S.M
 Quant Title : SW846 8260
 QLast Update : Wed Apr 23 02:30:30 2025
 Response via : Initial Calibration

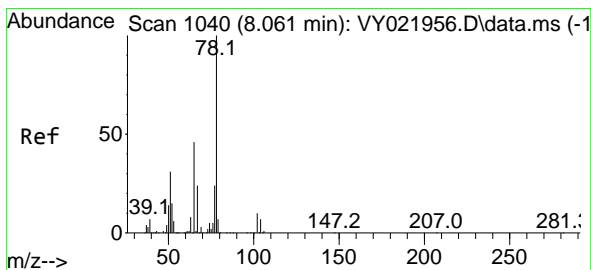
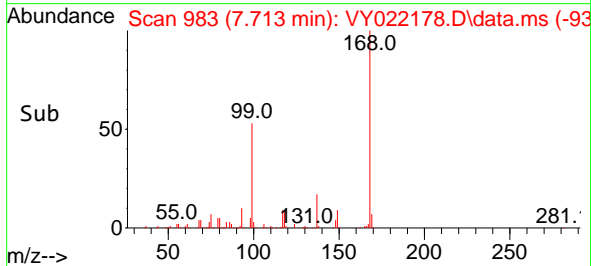
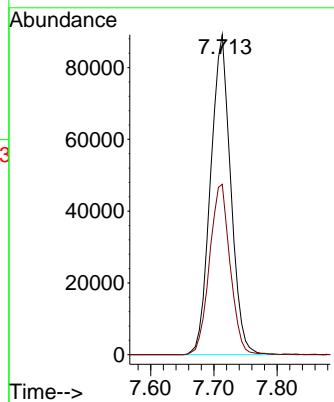
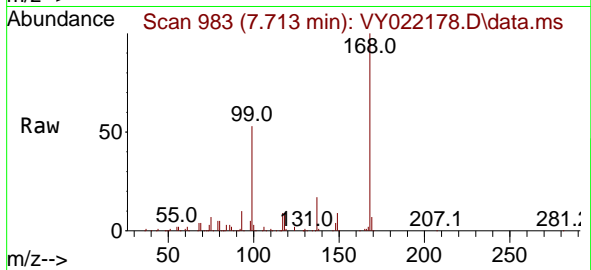




#1
 Pentafluorobenzene
 Concen: 50.000 ug/l
 RT: 7.713 min Scan# 91
 Delta R.T. 0.006 min
 Lab File: VY022178.D
 Acq: 06 May 2025 13:03

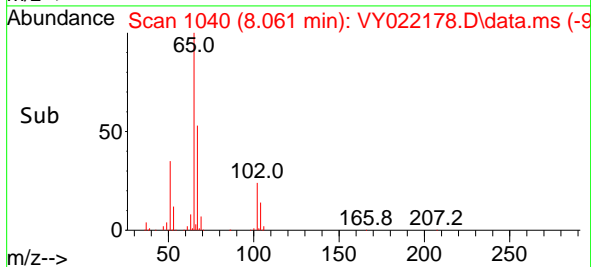
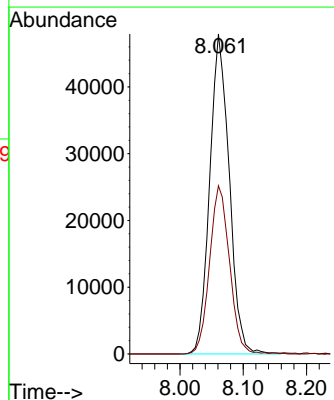
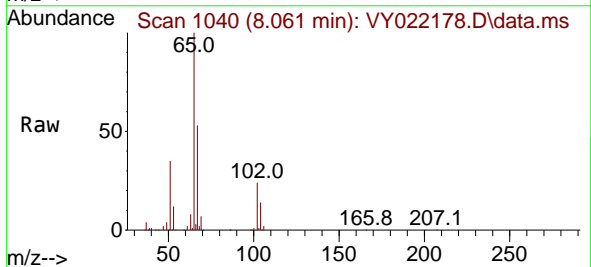
Instrument :
 MSVOA_Y
 ClientSampleId :
 SS-9

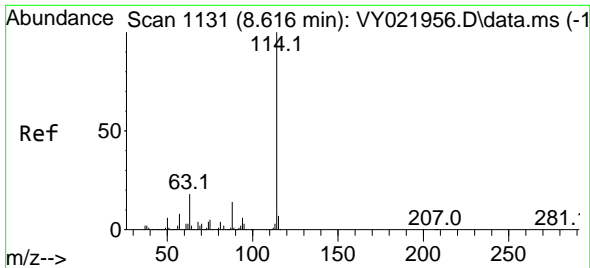
Tgt Ion:168 Resp: 197156
 Ion Ratio Lower Upper
 168 100
 99 53.2 43.1 64.7



#33
 1,2-Dichloroethane-d4
 Concen: 56.350 ug/l
 RT: 8.061 min Scan# 1040
 Delta R.T. -0.000 min
 Lab File: VY022178.D
 Acq: 06 May 2025 13:03

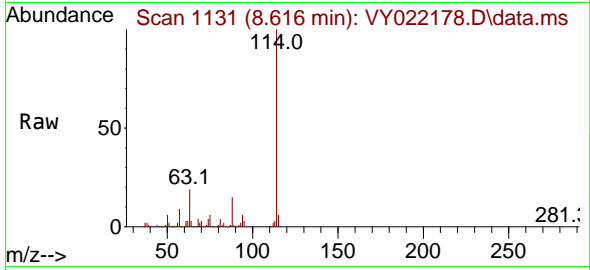
Tgt Ion: 65 Resp: 102619
 Ion Ratio Lower Upper
 65 100
 67 53.7 0.0 105.8



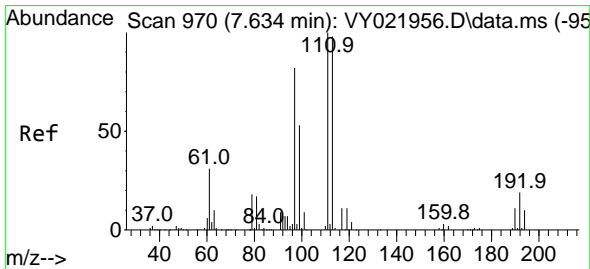
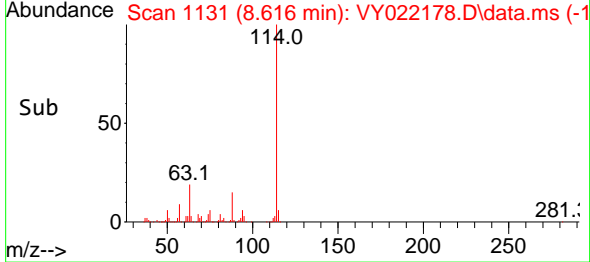
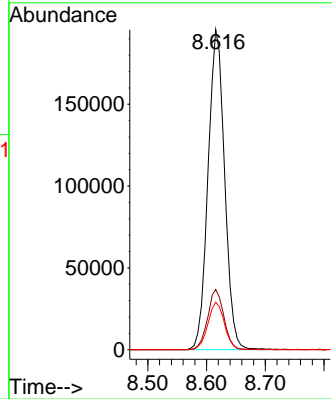


#34
 1,4-Difluorobenzene
 Concen: 50.000 ug/l
 RT: 8.616 min Scan# 1131
 Delta R.T. -0.000 min
 Lab File: VY022178.D
 Acq: 06 May 2025 13:03

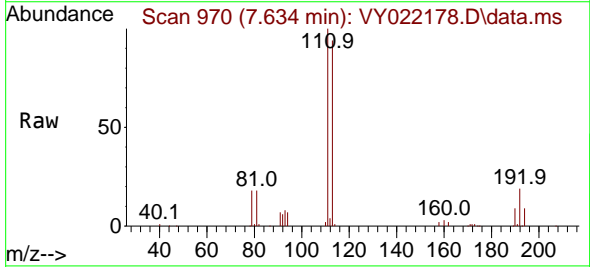
Instrument : MSVOA_Y
 ClientSampleId : SS-9



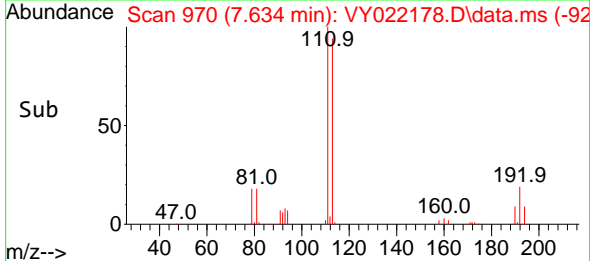
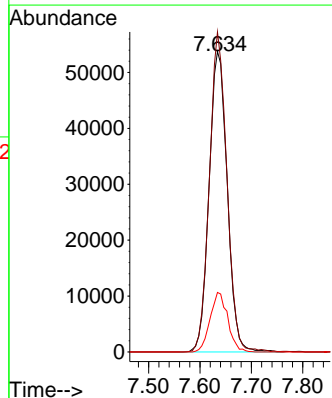
Tgt Ion:114 Resp: 383574
 Ion Ratio Lower Upper
 114 100
 63 18.8 0.0 35.4
 88 14.9 0.0 28.2

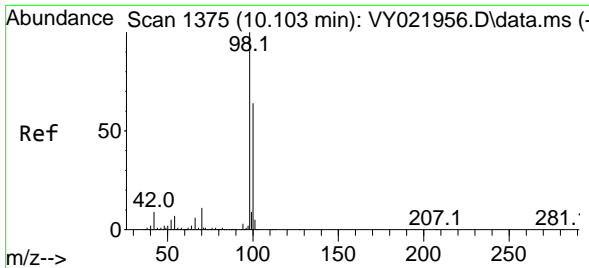


#35
 Dibromofluoromethane
 Concen: 51.994 ug/l
 RT: 7.634 min Scan# 970
 Delta R.T. -0.000 min
 Lab File: VY022178.D
 Acq: 06 May 2025 13:03



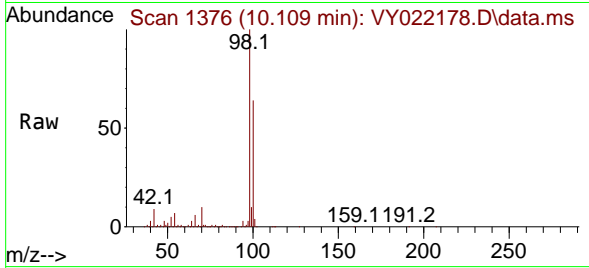
Tgt Ion:113 Resp: 131757
 Ion Ratio Lower Upper
 113 100
 111 102.7 81.8 122.8
 192 19.3 15.6 23.4



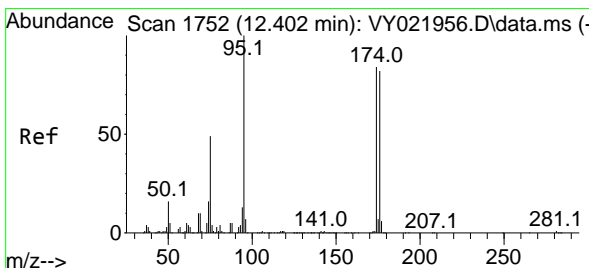
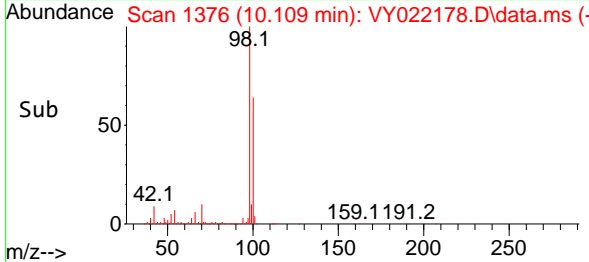
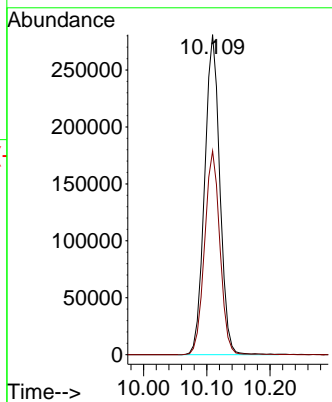


#50
 Toluene-d8
 Concen: 49.245 ug/l
 RT: 10.109 min Scan# 11
 Delta R.T. 0.006 min
 Lab File: VY022178.D
 Acq: 06 May 2025 13:03

Instrument :
 MSVOA_Y
 ClientSampleId :
 SS-9

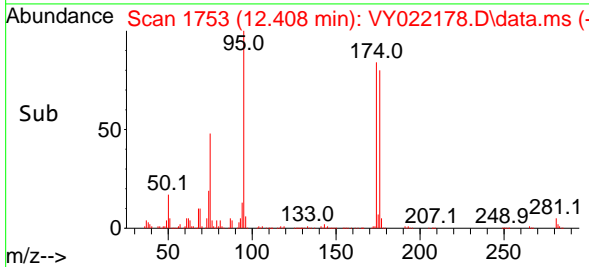
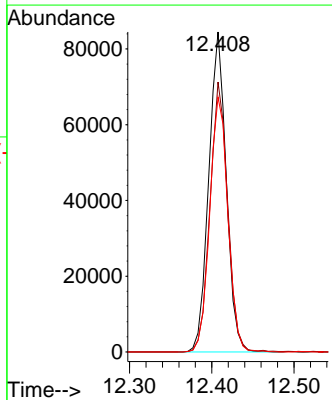
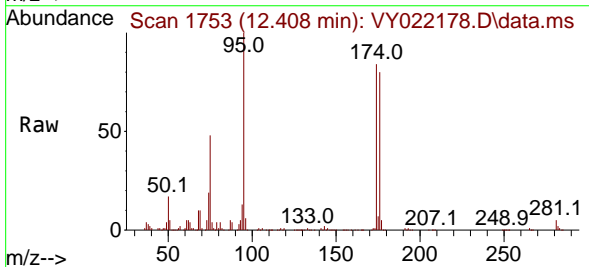


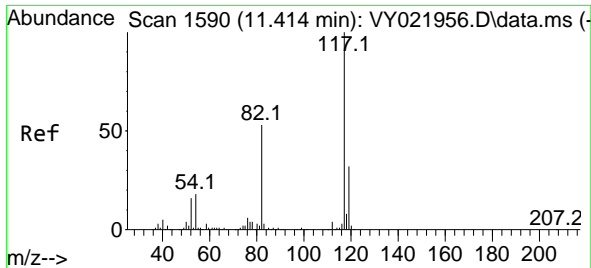
Tgt Ion: 98 Resp: 470465
 Ion Ratio Lower Upper
 98 100
 100 64.1 51.6 77.4



#62
 4-Bromofluorobenzene
 Concen: 38.779 ug/l
 RT: 12.408 min Scan# 1753
 Delta R.T. 0.006 min
 Lab File: VY022178.D
 Acq: 06 May 2025 13:03

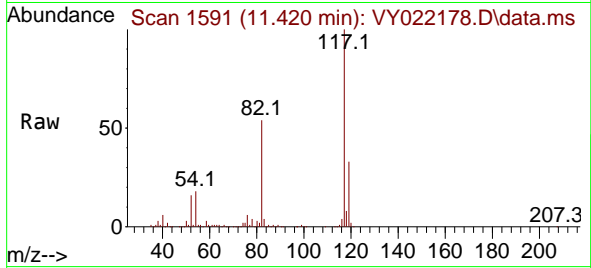
Tgt Ion: 95 Resp: 124718
 Ion Ratio Lower Upper
 95 100
 174 85.8 0.0 179.0
 176 82.9 0.0 171.8



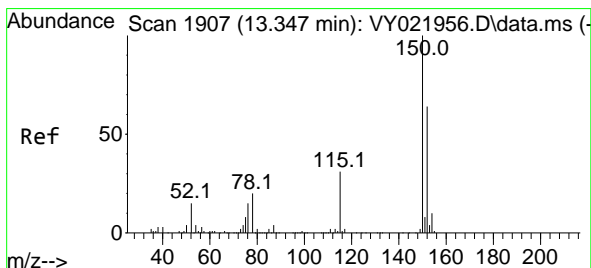
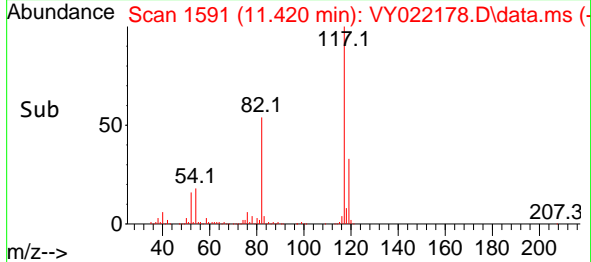
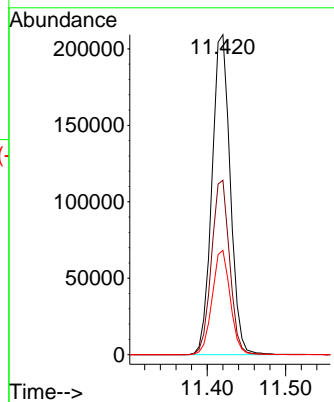


#63
 Chlorobenzene-d5
 Concen: 50.000 ug/l
 RT: 11.420 min Scan# 117
 Delta R.T. 0.006 min
 Lab File: VY022178.D
 Acq: 06 May 2025 13:03

Instrument : MSVOA_Y
 ClientSampleId : SS-9



Tgt Ion:117 Resp: 339845
 Ion Ratio Lower Upper
 117 100
 82 54.5 42.1 63.1
 119 32.6 25.7 38.5



#72
 1,4-Dichlorobenzene-d4
 Concen: 50.000 ug/l
 RT: 13.346 min Scan# 1907
 Delta R.T. -0.000 min
 Lab File: VY022178.D
 Acq: 06 May 2025 13:03

Tgt Ion:152 Resp: 120680
 Ion Ratio Lower Upper
 152 100
 115 57.6 28.0 84.0
 150 156.2 0.0 345.6

