

Data Path : Z:\voasrv\HPCHEM1\MSVOA_Y\Data\VY051625\
 Data File : VY022294.D
 Acq On : 16 May 2025 16:25
 Operator : SY/MD
 Sample : Q2032-03
 Misc : 7.33g/5.0mL/MSVOA_Y/SOIL/A
 ALS Vial : 19 Sample Multiplier: 1

Instrument :
 MSVOA_Y
 ClientSampleId :
 TP-29-99

Quant Time: May 17 01:35:47 2025
 Quant Method : Z:\voasrv\HPCHEM1\MSVOA_Y\methods\82Y051525S.M
 Quant Title : SW846 8260
 QLast Update : Fri May 16 01:42:09 2025
 Response via : Initial Calibration

Compound	R.T.	QIon	Response	Conc	Units	Dev(Min)

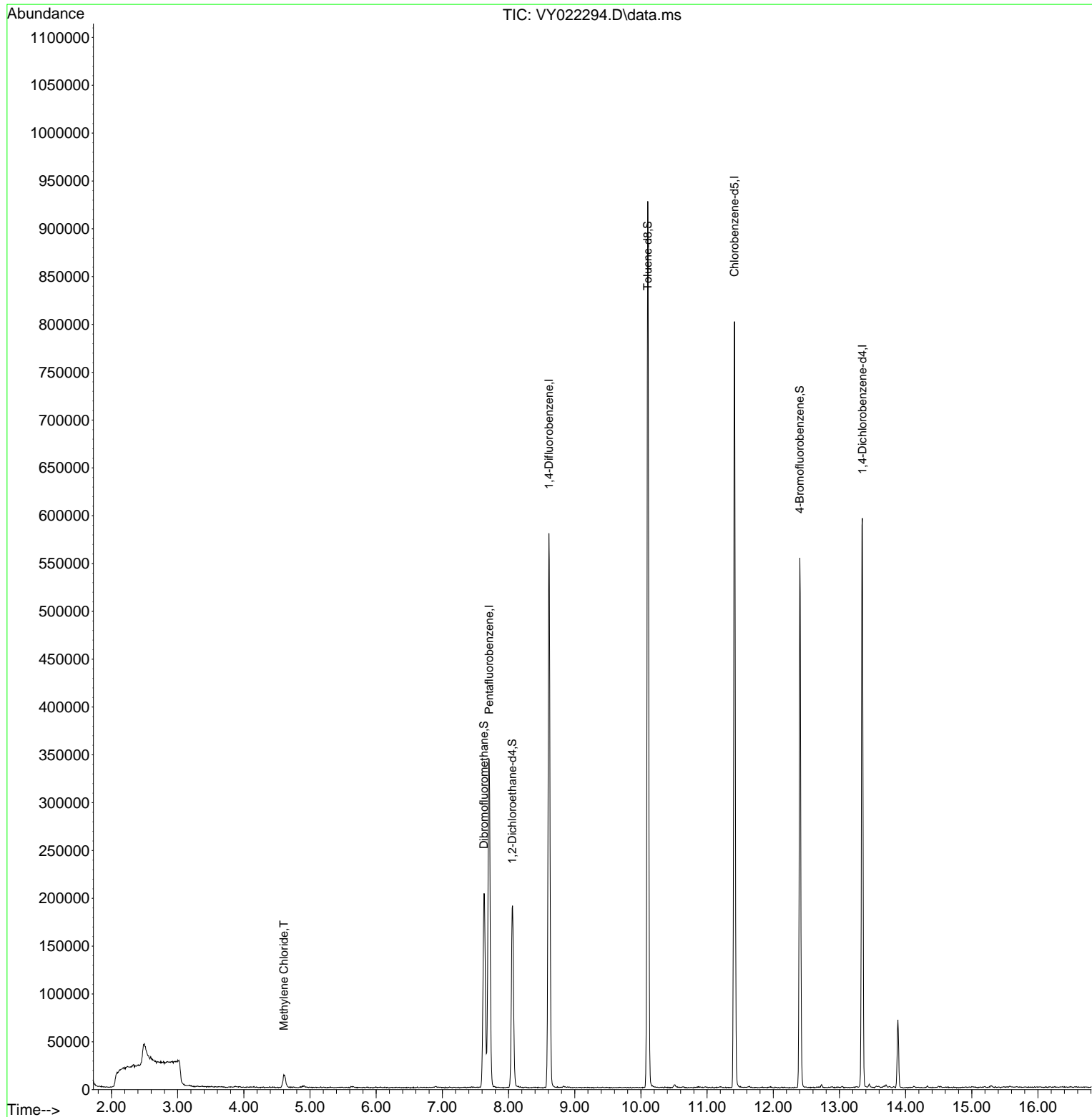
Internal Standards						
1) Pentafluorobenzene	7.707	168	265101	50.000	ug/l	0.00
34) 1,4-Difluorobenzene	8.610	114	475372	50.000	ug/l	0.00
63) Chlorobenzene-d5	11.414	117	384945	50.000	ug/l	0.00
72) 1,4-Dichlorobenzene-d4	13.347	152	141625	50.000	ug/l	0.00
System Monitoring Compounds						
33) 1,2-Dichloroethane-d4	8.055	65	145390	50.181	ug/l	0.00
Spiked Amount	50.000	Range	50 - 163	Recovery	=	100.360%
35) Dibromofluoromethane	7.628	113	143715	50.652	ug/l	0.00
Spiked Amount	50.000	Range	54 - 147	Recovery	=	101.300%
50) Toluene-d8	10.103	98	573451	49.349	ug/l	0.00
Spiked Amount	50.000	Range	58 - 134	Recovery	=	98.700%
62) 4-Bromofluorobenzene	12.402	95	150514	40.864	ug/l	0.00
Spiked Amount	50.000	Range	30 - 143	Recovery	=	81.720%
Target Compounds						
20) Methylene Chloride	4.604	84	8682	2.473	ug/l	92

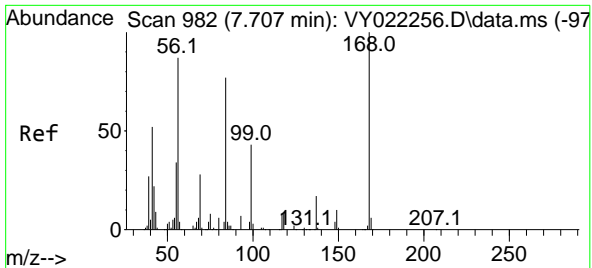
(#) = qualifier out of range (m) = manual integration (+) = signals summed

Data Path : Z:\voasrv\HPCHEM1\MSVOA_Y\Data\VY051625\
 Data File : VY022294.D
 Acq On : 16 May 2025 16:25
 Operator : SY/MD
 Sample : Q2032-03
 Misc : 7.33g/5.0mL/MSVOA_Y/SOIL/A
 ALS Vial : 19 Sample Multiplier: 1

Instrument :
 MSVOA_Y
 ClientSampleId :
 TP-29-99

Quant Time: May 17 01:35:47 2025
 Quant Method : Z:\voasrv\HPCHEM1\MSVOA_Y\methods\82Y051525S.M
 Quant Title : SW846 8260
 QLast Update : Fri May 16 01:42:09 2025
 Response via : Initial Calibration

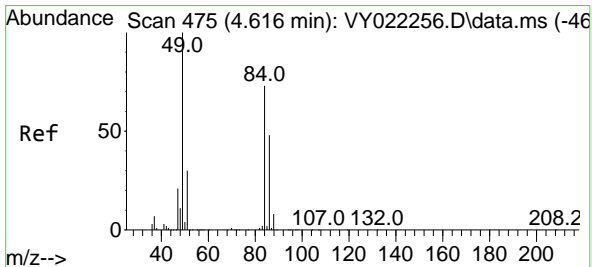
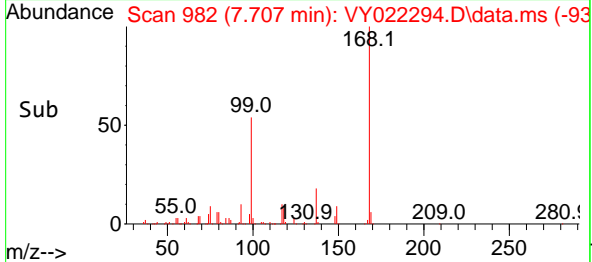
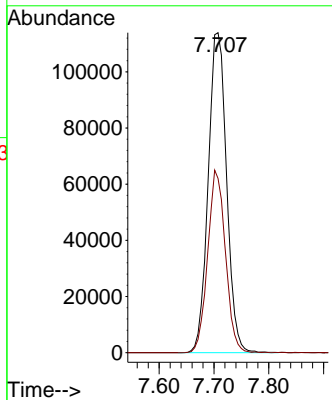
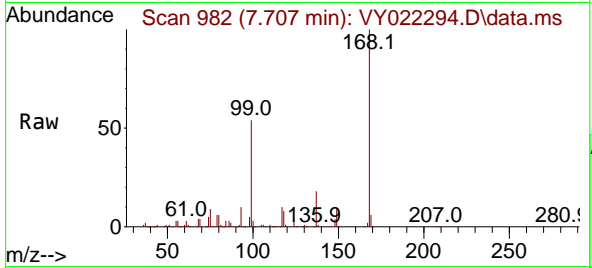




#1
 Pentafluorobenzene
 Concen: 50.000 ug/l
 RT: 7.707 min Scan# 982
 Delta R.T. 0.000 min
 Lab File: VY022294.D
 Acq: 16 May 2025 16:25

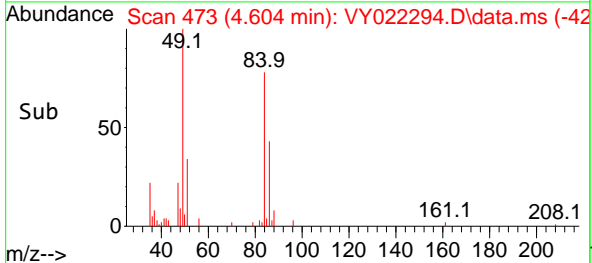
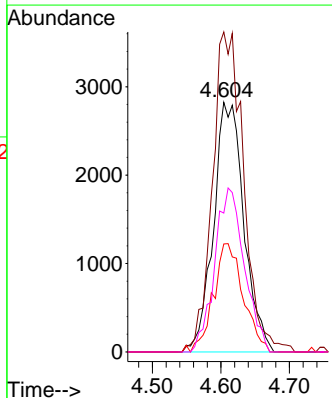
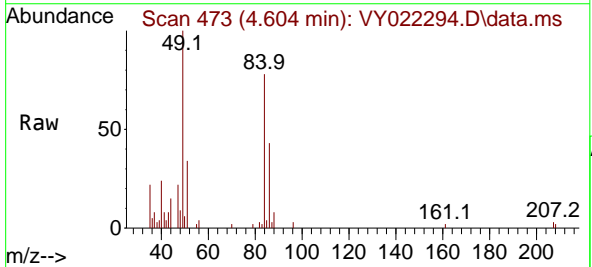
Instrument : MSVOA_Y
 ClientSampleId : TP-29-99

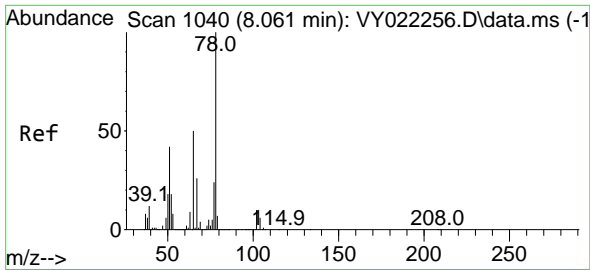
Tgt Ion:168 Resp: 265101
 Ion Ratio Lower Upper
 168 100
 99 54.4 44.2 66.4



#20
 Methylene Chloride
 Concen: 2.473 ug/l
 RT: 4.604 min Scan# 473
 Delta R.T. -0.012 min
 Lab File: VY022294.D
 Acq: 16 May 2025 16:25

Tgt Ion: 84 Resp: 8682
 Ion Ratio Lower Upper
 84 100
 49 128.2 109.6 164.4
 51 43.3 32.4 48.6
 86 55.6 52.3 78.5

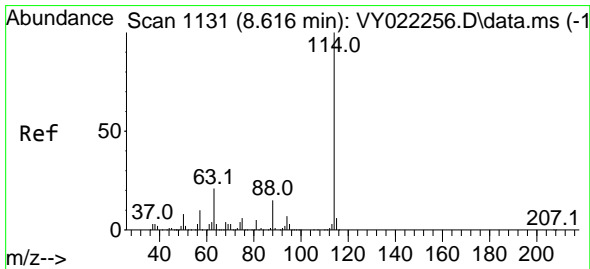
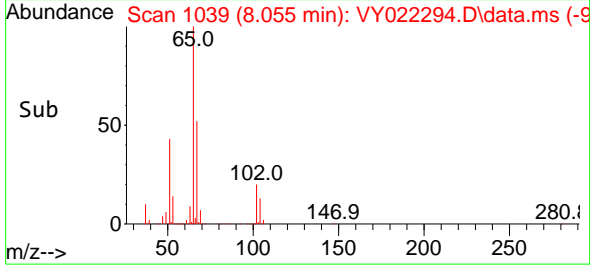
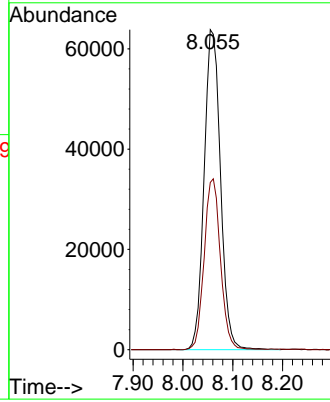
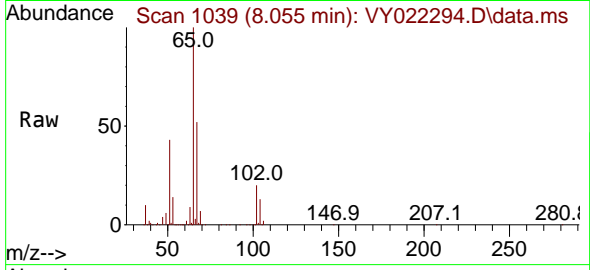




#33
 1,2-Dichloroethane-d4
 Concen: 50.181 ug/l
 RT: 8.055 min Scan# 1039
 Delta R.T. -0.006 min
 Lab File: VY022294.D
 Acq: 16 May 2025 16:25

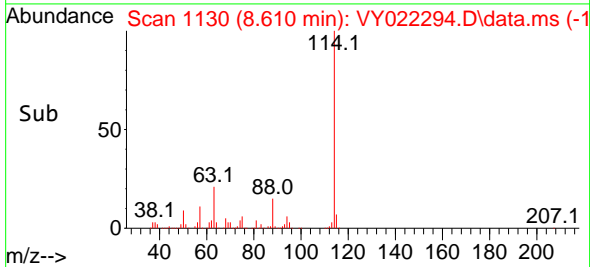
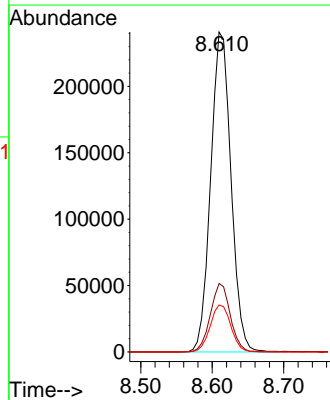
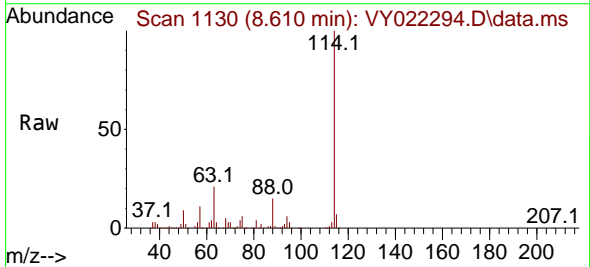
Instrument : MSVOA_Y
 ClientSampleId : TP-29-99

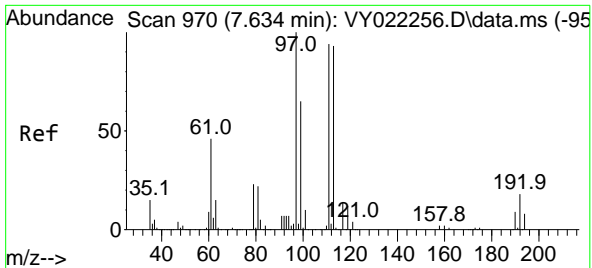
Tgt Ion: 65 Resp: 145390
 Ion Ratio Lower Upper
 65 100
 67 53.1 0.0 104.6



#34
 1,4-Difluorobenzene
 Concen: 50.000 ug/l
 RT: 8.610 min Scan# 1130
 Delta R.T. -0.006 min
 Lab File: VY022294.D
 Acq: 16 May 2025 16:25

Tgt Ion:114 Resp: 475372
 Ion Ratio Lower Upper
 114 100
 63 21.4 0.0 41.0
 88 14.7 0.0 29.4

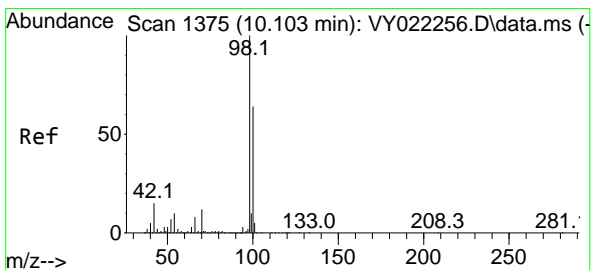
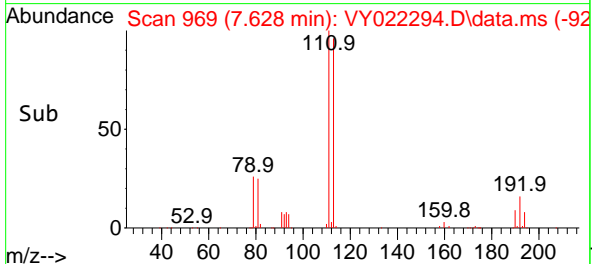
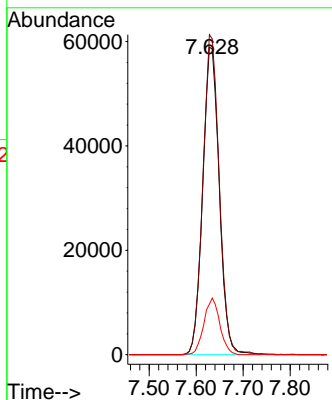
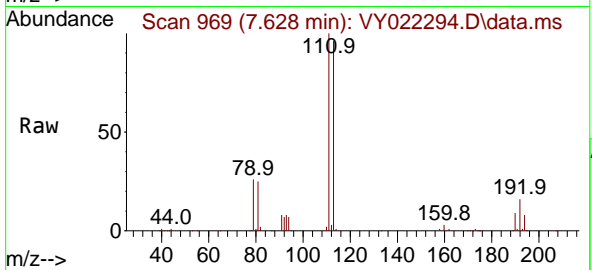




#35
 Dibromofluoromethane
 Concen: 50.652 ug/l
 RT: 7.628 min Scan# 90
 Delta R.T. -0.006 min
 Lab File: VY022294.D
 Acq: 16 May 2025 16:25

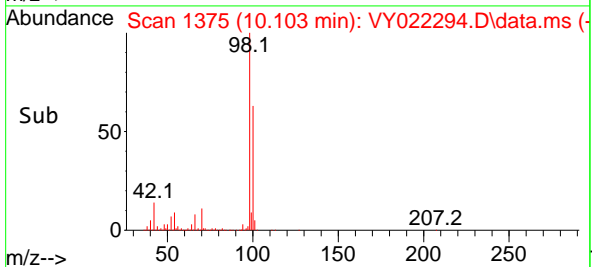
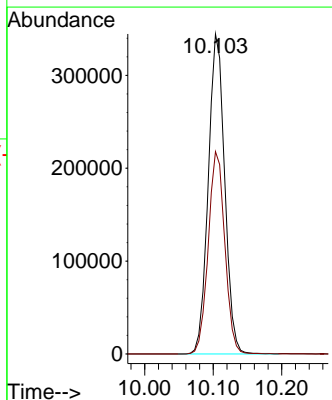
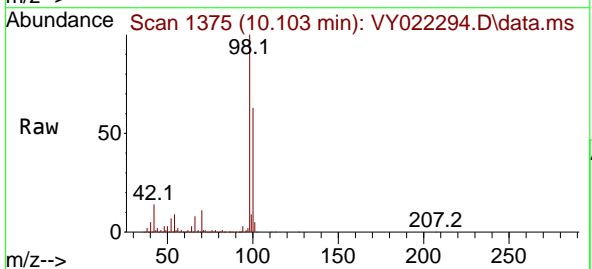
Instrument :
 MSVOA_Y
 ClientSampleId :
 TP-29-99

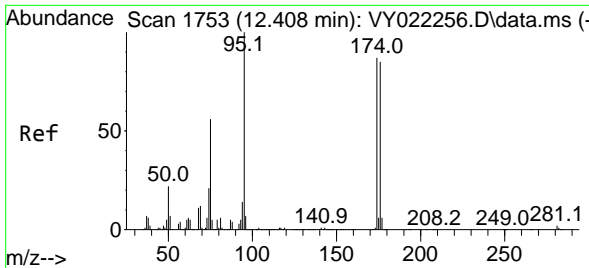
Tgt Ion:113 Resp: 143715
 Ion Ratio Lower Upper
 113 100
 111 103.0 82.6 123.8
 192 17.8 15.2 22.8



#50
 Toluene-d8
 Concen: 49.349 ug/l
 RT: 10.103 min Scan# 1375
 Delta R.T. 0.000 min
 Lab File: VY022294.D
 Acq: 16 May 2025 16:25

Tgt Ion: 98 Resp: 573451
 Ion Ratio Lower Upper
 98 100
 100 63.9 51.8 77.8



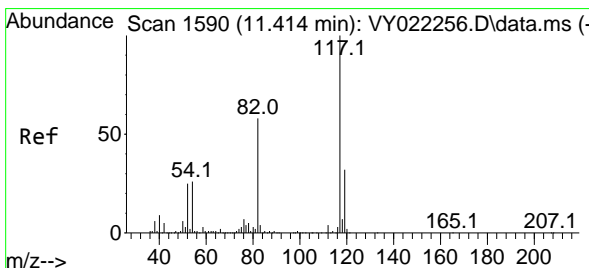
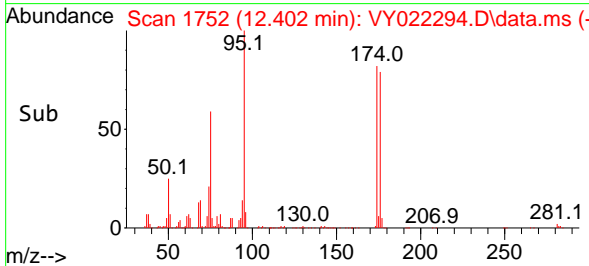
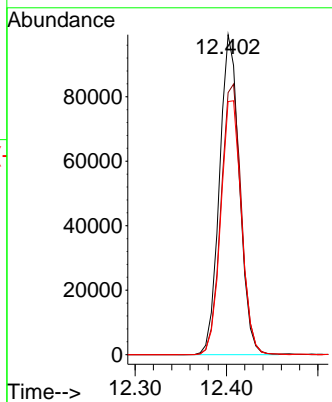
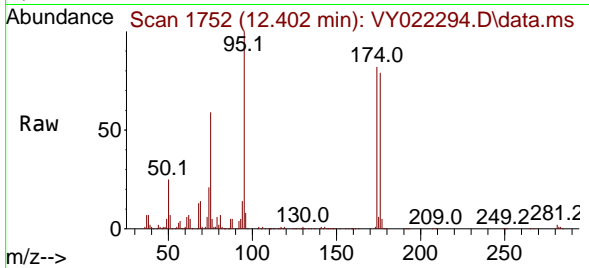


#62
 4-Bromofluorobenzene
 Concen: 40.864 ug/l
 RT: 12.402 min Scan# 11
 Delta R.T. -0.006 min
 Lab File: VY022294.D
 Acq: 16 May 2025 16:25

Instrument : MSVOA_Y
 ClientSampleId : TP-29-99

Tgt Ion: 95 Resp: 150514

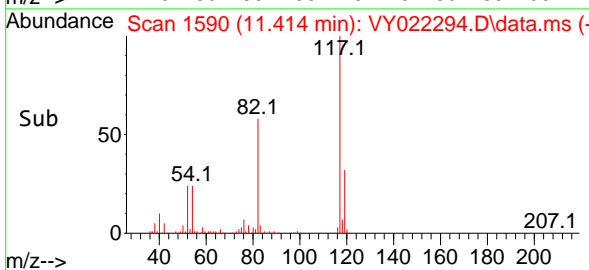
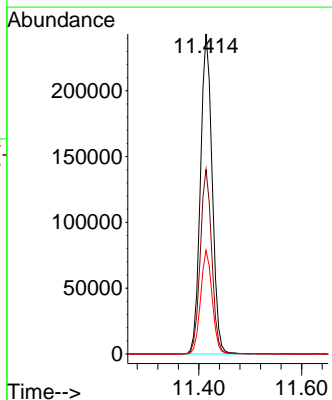
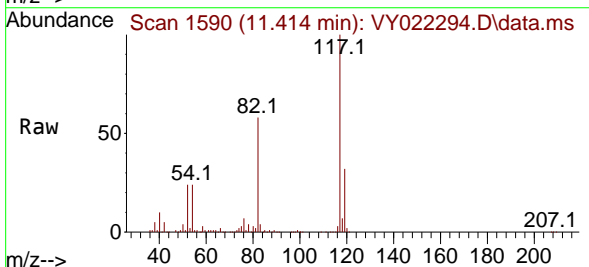
Ion	Ratio	Lower	Upper
95	100		
174	86.9	0.0	166.8
176	82.5	0.0	160.8

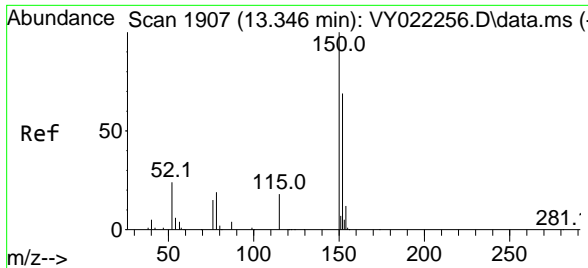


#63
 Chlorobenzene-d5
 Concen: 50.000 ug/l
 RT: 11.414 min Scan# 1590
 Delta R.T. 0.000 min
 Lab File: VY022294.D
 Acq: 16 May 2025 16:25

Tgt Ion: 117 Resp: 384945

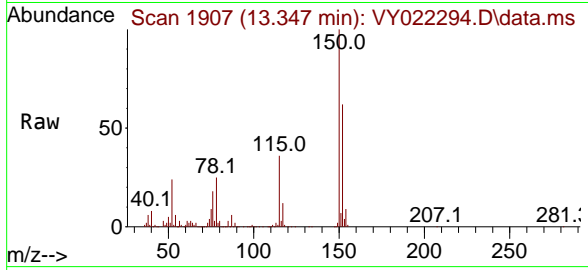
Ion	Ratio	Lower	Upper
117	100		
82	57.7	46.6	70.0
119	32.4	25.8	38.6





#72
 1,4-Dichlorobenzene-d4
 Concen: 50.000 ug/l
 RT: 13.347 min Scan# 1907
 Delta R.T. 0.000 min
 Lab File: VY022294.D
 Acq: 16 May 2025 16:25

Instrument :
 MSVOA_Y
 ClientSampleId :
 TP-29-99



Tgt Ion:152 Resp: 141625

Ion	Ratio	Lower	Upper
152	100		
115	57.9	29.4	88.2
150	158.3	0.0	353.8

