

Data Path : Z:\voasrv\HPCHEM1\MSVOA\_Y\Data\VY051724\  
 Data File : VY018315.D  
 Acq On : 17 May 2024 17:57  
 Operator : SY/MD  
 Sample : P2495-02RE  
 Misc : 5.06g/5.0mL/MSVOA\_Y/SOIL/B  
 ALS Vial : 20 Sample Multiplier: 1

Instrument :  
 MSVOA\_Y  
 ClientSampleId :  
 RT-3463RE

Quant Time: May 18 00:53:58 2024  
 Quant Method : Z:\voasrv\HPCHEM1\MSVOA\_Y\methods\82Y050724S.M  
 Quant Title : SW846 8260  
 QLast Update : Wed May 08 01:40:14 2024  
 Response via : Initial Calibration

Compound	R.T.	QIon	Response	Conc	Units	Dev(Min)
Internal Standards						
1) Pentafluorobenzene	7.777	168	14464	50.000	ug/l	-0.01
34) 1,4-Difluorobenzene	8.685	114	21469	50.000	ug/l	0.00
63) Chlorobenzene-d5	11.490	117	12885	50.000	ug/l	0.00
72) 1,4-Dichlorobenzene-d4	13.428	152	2570	50.000	ug/l	0.00
System Monitoring Compounds						
33) 1,2-Dichloroethane-d4	8.136	65	4383	41.191	ug/l	0.00
Spiked Amount	50.000	Range	50 - 163	Recovery	=	82.380%
35) Dibromofluoromethane	7.710	113	5128	45.449	ug/l	0.00
Spiked Amount	50.000	Range	54 - 147	Recovery	=	90.900%
50) Toluene-d8	10.179	98	22052	49.597	ug/l	0.00
Spiked Amount	50.000	Range	58 - 134	Recovery	=	99.200%
62) 4-Bromofluorobenzene	12.483	95	3874	26.980	ug/l	0.00
Spiked Amount	50.000	Range	30 - 143	Recovery	=	53.960%

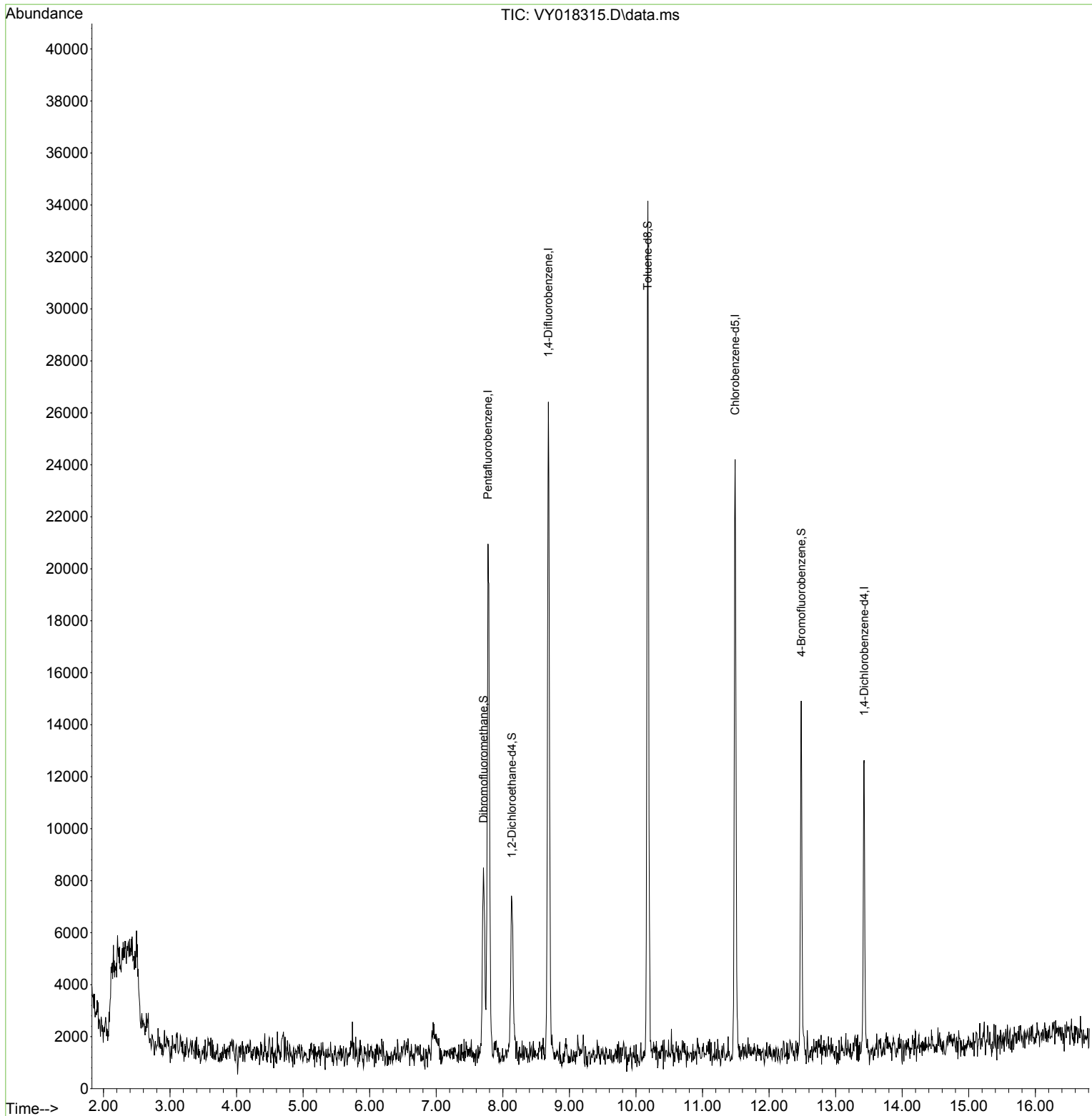
Target Compounds Qvalue

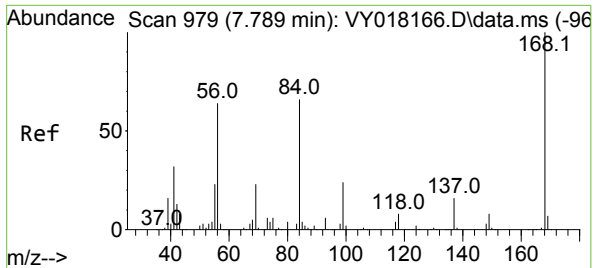
(#) = qualifier out of range (m) = manual integration (+) = signals summed

Data Path : Z:\voasrv\HPCHEM1\MSVOA\_Y\Data\VY051724\  
 Data File : VY018315.D  
 Acq On : 17 May 2024 17:57  
 Operator : SY/MD  
 Sample : P2495-02RE  
 Misc : 5.06g/5.0mL/MSVOA\_Y/SOIL/B  
 ALS Vial : 20 Sample Multiplier: 1

Instrument :  
 MSVOA\_Y  
 ClientSampleId :  
 RT-3463RE

Quant Time: May 18 00:53:58 2024  
 Quant Method : Z:\voasrv\HPCHEM1\MSVOA\_Y\methods\82Y050724S.M  
 Quant Title : SW846 8260  
 QLast Update : Wed May 08 01:40:14 2024  
 Response via : Initial Calibration

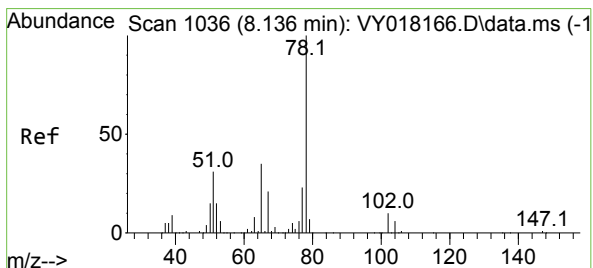
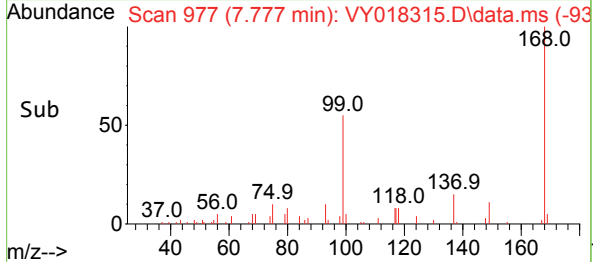
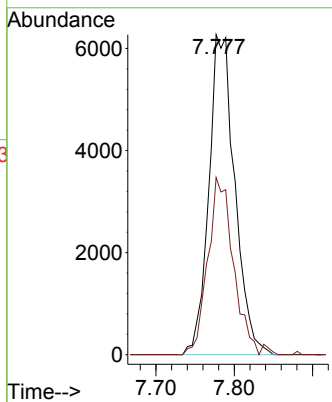
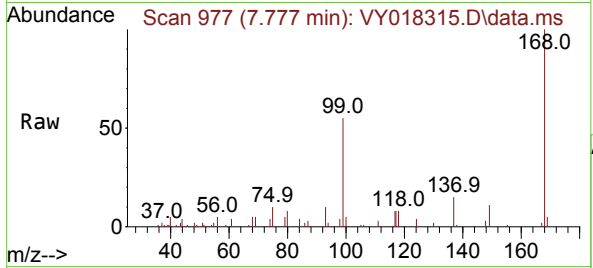




#1  
 Pentafluorobenzene  
 Concen: 50.000 ug/l  
 RT: 7.777 min Scan# 91  
 Delta R.T. -0.012 min  
 Lab File: VY018315.D  
 Acq: 17 May 2024 17:57

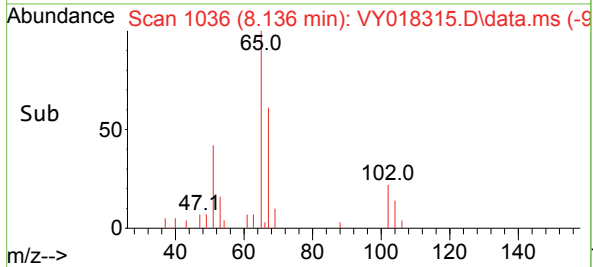
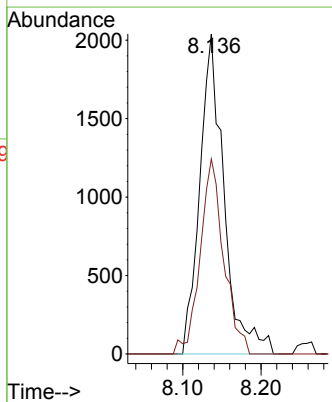
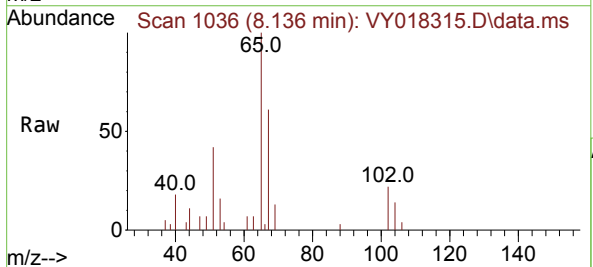
Instrument :  
 MSVOA\_Y  
 ClientSampleId :  
 RT-3463RE

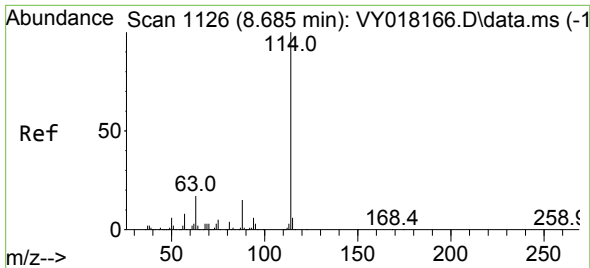
Tgt Ion:168 Resp: 14464  
 Ion Ratio Lower Upper  
 168 100  
 99 55.3 39.1 58.7



#33  
 1,2-Dichloroethane-d4  
 Concen: 41.191 ug/l  
 RT: 8.136 min Scan# 1036  
 Delta R.T. 0.000 min  
 Lab File: VY018315.D  
 Acq: 17 May 2024 17:57

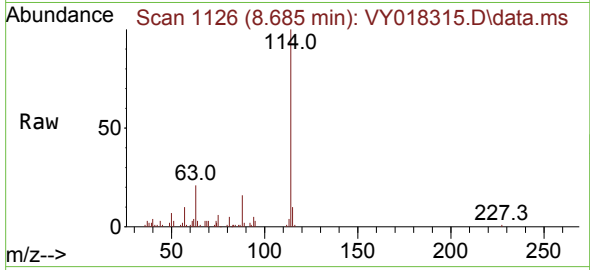
Tgt Ion: 65 Resp: 4383  
 Ion Ratio Lower Upper  
 65 100  
 67 59.4 0.0 109.6



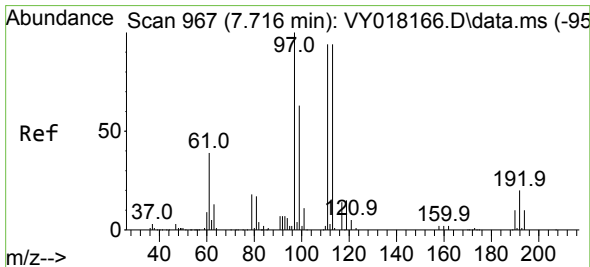
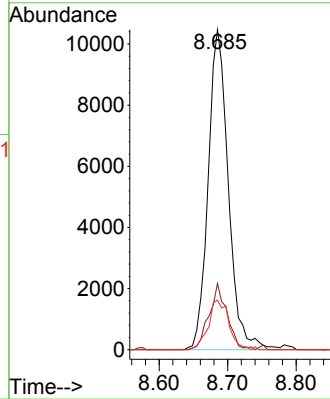
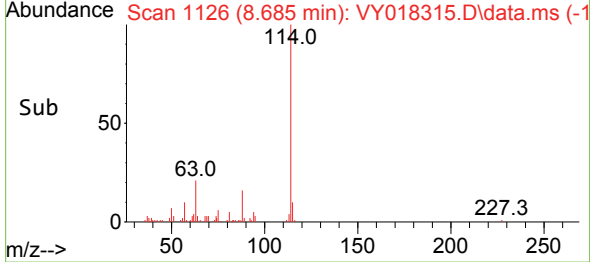


#34  
 1,4-Difluorobenzene  
 Concen: 50.000 ug/l  
 RT: 8.685 min Scan# 1126  
 Delta R.T. 0.000 min  
 Lab File: VY018315.D  
 Acq: 17 May 2024 17:57

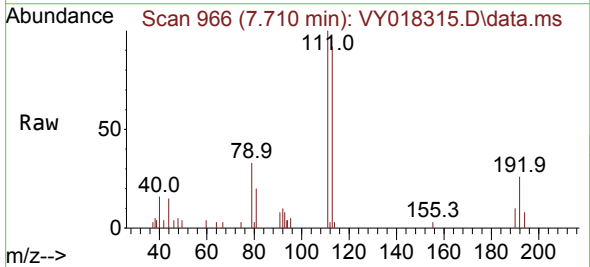
Instrument :  
 MSVOA\_Y  
 ClientSampleId :  
 RT-3463RE



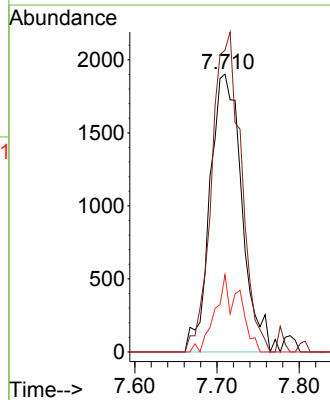
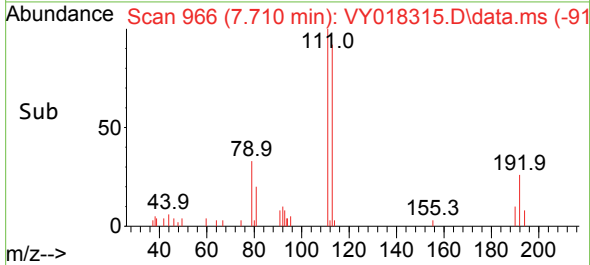
Tgt Ion	Resp	Lower	Upper
114	100		
63	20.7	0.0	35.0
88	15.5	0.0	27.2

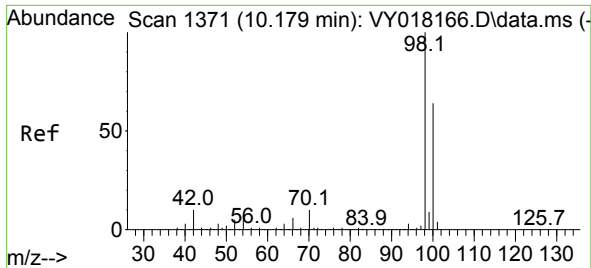


#35  
 Dibromofluoromethane  
 Concen: 45.449 ug/l  
 RT: 7.710 min Scan# 966  
 Delta R.T. -0.006 min  
 Lab File: VY018315.D  
 Acq: 17 May 2024 17:57



Tgt Ion	Resp	Lower	Upper
113	100		
111	105.9	82.2	123.4
192	21.3	15.9	23.9

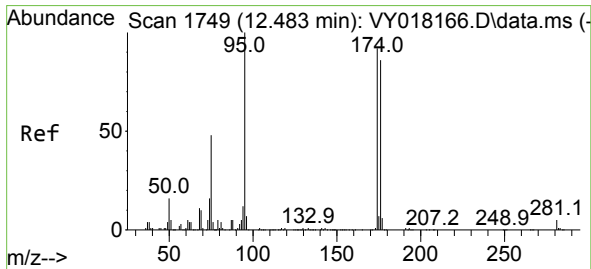
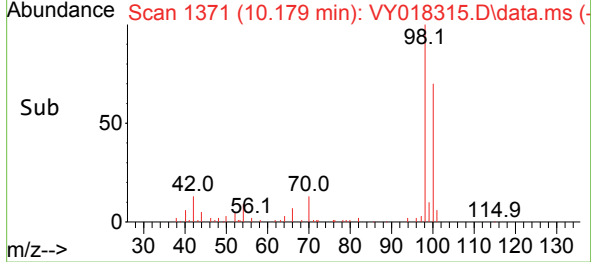
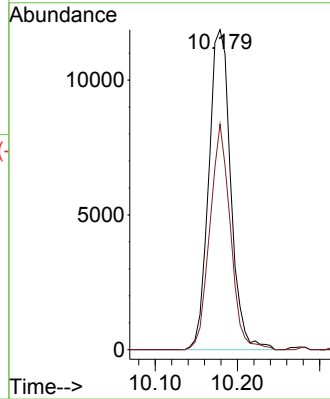
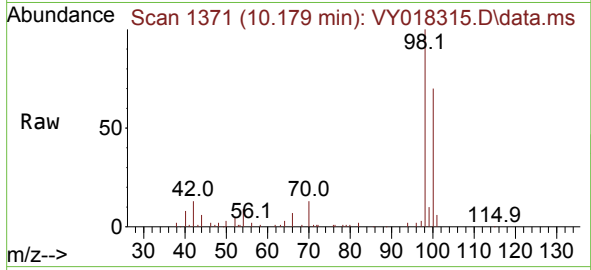




#50  
 Toluene-d8  
 Concen: 49.597 ug/l  
 RT: 10.179 min Scan# 11  
 Delta R.T. 0.000 min  
 Lab File: VY018315.D  
 Acq: 17 May 2024 17:57

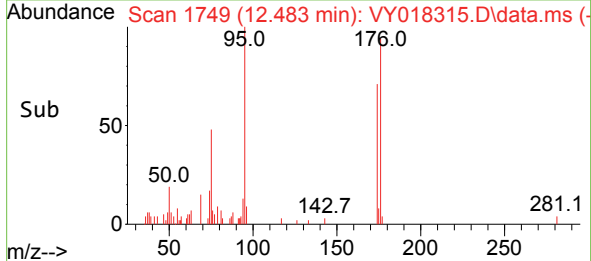
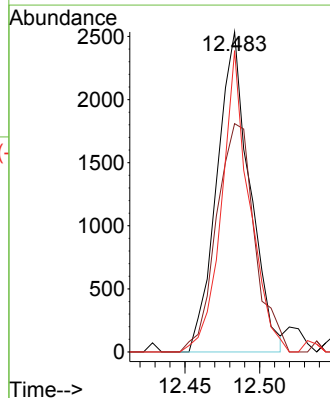
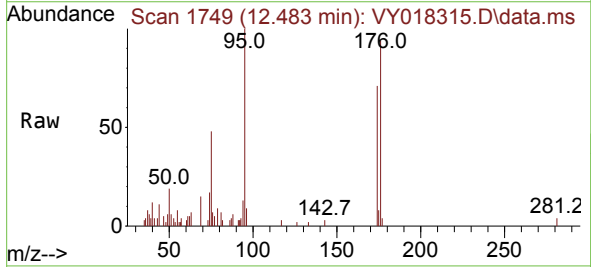
Instrument :  
 MSVOA\_Y  
 ClientSampleId :  
 RT-3463RE

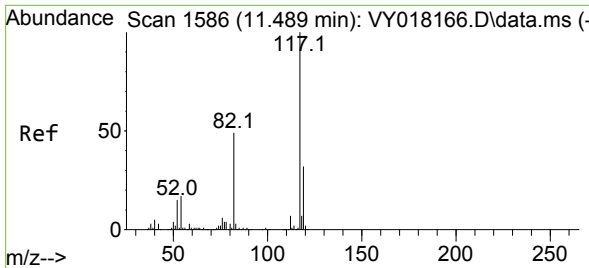
Tgt Ion: 98 Resp: 22052  
 Ion Ratio Lower Upper  
 98 100  
 100 65.7 52.0 78.0



#62  
 4-Bromofluorobenzene  
 Concen: 26.980 ug/l  
 RT: 12.483 min Scan# 1749  
 Delta R.T. 0.000 min  
 Lab File: VY018315.D  
 Acq: 17 May 2024 17:57

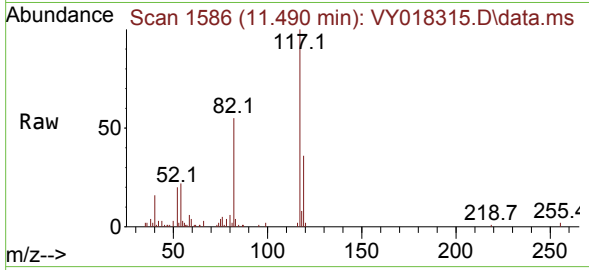
Tgt Ion: 95 Resp: 3874  
 Ion Ratio Lower Upper  
 95 100  
 174 82.9 0.0 175.6  
 176 79.8 0.0 171.4





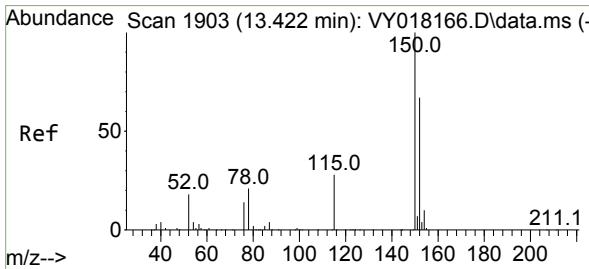
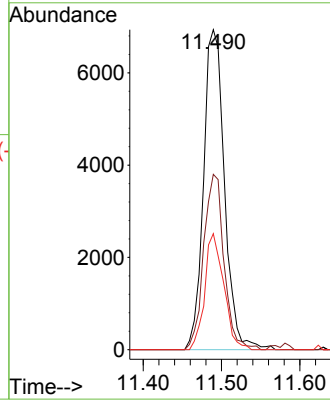
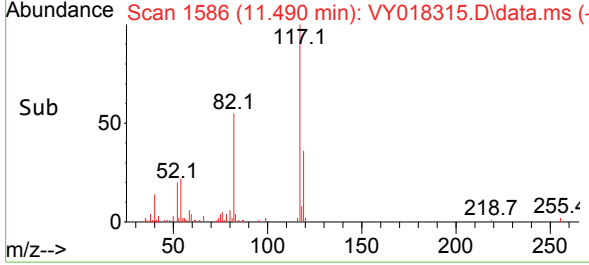
#63  
 Chlorobenzene-d5  
 Concen: 50.000 ug/l  
 RT: 11.490 min Scan# 11  
 Delta R.T. 0.000 min  
 Lab File: VY018315.D  
 Acq: 17 May 2024 17:57

Instrument :  
 MSVOA\_Y  
 ClientSampleId :  
 RT-3463RE

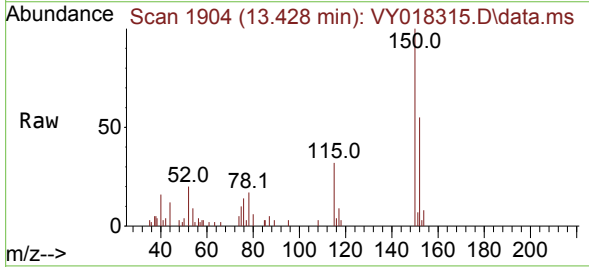


Tgt Ion:117 Resp: 12885

Ion	Ratio	Lower	Upper
117	100		
82	54.8	42.4	63.6
119	36.2	25.9	38.9



#72  
 1,4-Dichlorobenzene-d4  
 Concen: 50.000 ug/l  
 RT: 13.428 min Scan# 1904  
 Delta R.T. 0.006 min  
 Lab File: VY018315.D  
 Acq: 17 May 2024 17:57



Tgt Ion:152 Resp: 2570

Ion	Ratio	Lower	Upper
152	100		
115	69.2	28.2	84.7
150	174.2	0.0	345.6

