

Data Path : Z:\voasrv\HPCHEM1\MSVOA\_Y\Data\VY051922\  
 Data File : VY008893.D  
 Acq On : 20 May 2022 02:15  
 Operator : KP/MD  
 Sample : N2907-02  
 Misc : 5.48g/5.0mL/MSVOA\_Y/SOIL  
 ALS Vial : 41 Sample Multiplier: 1

Instrument :  
 MSVOA\_Y  
 ClientSampleId :  
 GC-2

Quant Time: May 20 02:58:00 2022  
 Quant Method : Z:\voasrv\HPCHEM1\MSVOA\_Y\methods\82Y051722S.M  
 Quant Title : SW846 8260  
 QLast Update : Wed May 18 07:32:50 2022  
 Response via : Initial Calibration

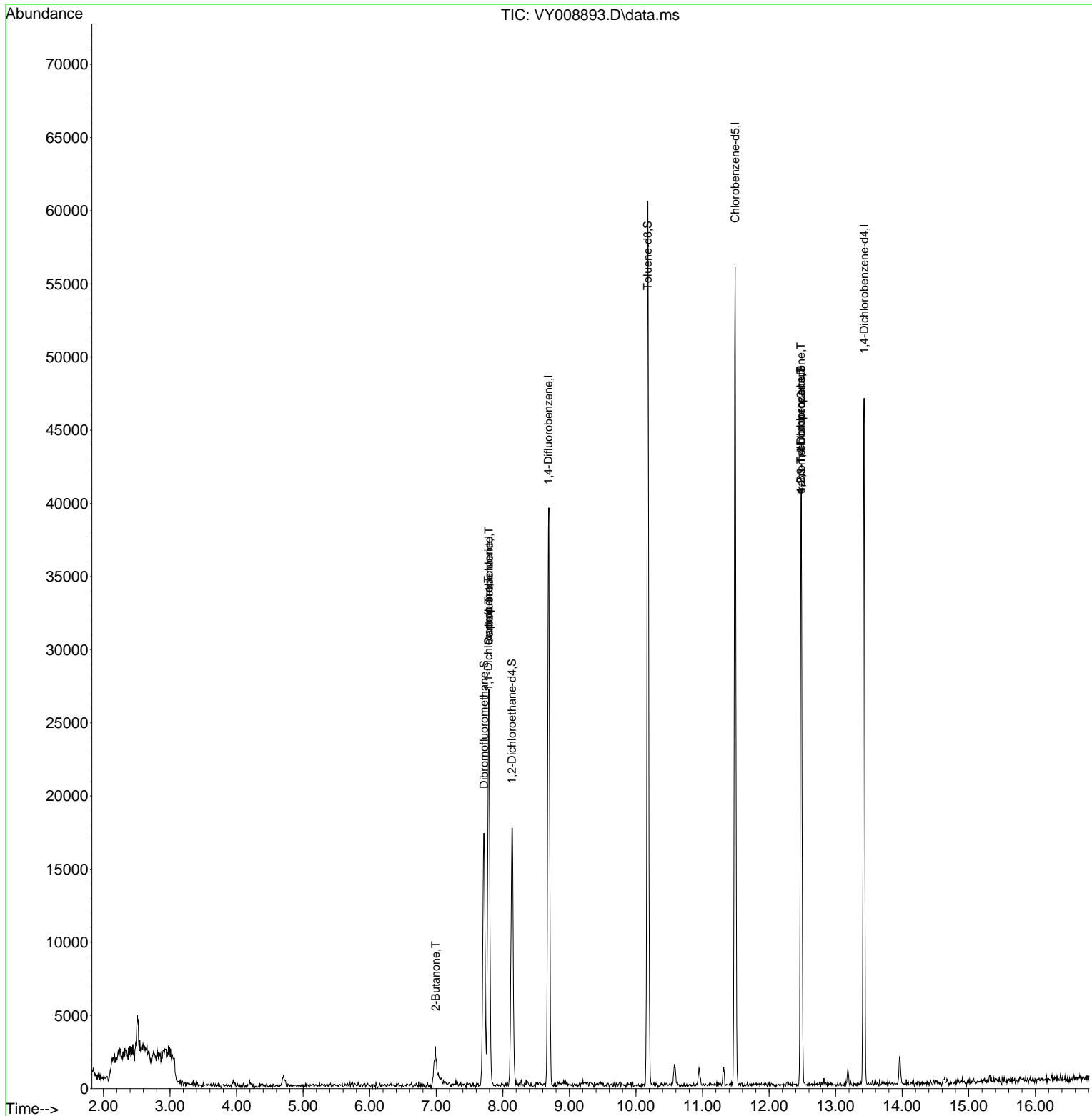
Compound	R.T.	QIon	Response	Conc	Units	Dev(Min)
-----						
Internal Standards						
1) Pentafluorobenzene	7.789	168	19774	50.000	ug/l	0.00
34) 1,4-Difluorobenzene	8.685	114	32805	50.000	ug/l	0.00
63) Chlorobenzene-d5	11.490	117	30088	50.000	ug/l	0.00
72) 1,4-Dichlorobenzene-d4	13.428	152	11566	50.000	ug/l	0.00
System Monitoring Compounds						
33) 1,2-Dichloroethane-d4	8.136	65	13397	73.030	ug/l	0.00
Spiked Amount	50.000	Range	50 - 163	Recovery	=	146.060%
35) Dibromofluoromethane	7.716	113	11763	61.370	ug/l	0.00
Spiked Amount	50.000	Range	54 - 147	Recovery	=	122.740%
50) Toluene-d8	10.179	98	38677	45.689	ug/l	0.00
Spiked Amount	50.000	Range	49 - 140	Recovery	=	91.380%
62) 4-Bromofluorobenzene	12.477	95	10770	36.439	ug/l	0.00
Spiked Amount	50.000	Range	25 - 144	Recovery	=	72.880%
Target Compounds						
					Qvalue	
2) Dichlorodifluoromethane	1.900	85	22	Below Cal	#	43
3) Chloromethane	2.138	50	51	Below Cal	#	1
4) Vinyl Chloride	2.253	62	126	Below Cal	#	43
5) Bromomethane	2.650	94	75	Below Cal		98
6) Chloroethane	2.759	64	21	Below Cal	#	43
16) Acetone	3.948	43	546	Below Cal	#	47
18) Methyl Acetate	4.253	43	29	Below Cal	#	56
20) Methylene Chloride	4.716	84	559	Below Cal	#	33
25) 2-Butanone	6.990	43	119	1.546	ug/l #	54
31) Cyclohexane	7.789	56	511	Below Cal	#	36
36) 1,1-Dichloropropene	7.783	75	1792	5.837	ug/l #	49
38) Carbon Tetrachloride	7.789	117	1965	5.973	ug/l #	17
76) 1,2,3-Trichloropropane	12.477	75	6077	45.485	ug/l #	100
81) trans-1,4-Dichloro-2-b...	12.477	75	6077	99.489	ug/l #	7
-----						

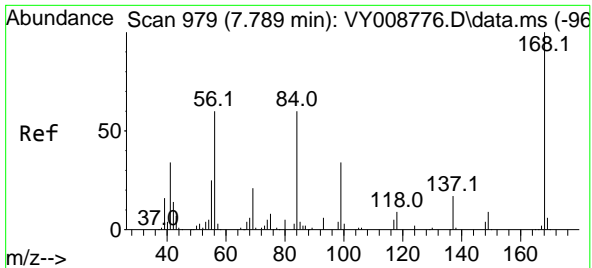
(#) = qualifier out of range (m) = manual integration (+) = signals summed

Data Path : Z:\voasrv\HPCHEM1\MSVOA\_Y\Data\VY051922\  
 Data File : VY008893.D  
 Acq On : 20 May 2022 02:15  
 Operator : KP/MD  
 Sample : N2907-02  
 Misc : 5.48g/5.0mL/MSVOA\_Y/SOIL  
 ALS Vial : 41 Sample Multiplier: 1

Instrument :  
 MSVOA\_Y  
 ClientSampleId :  
 GC-2

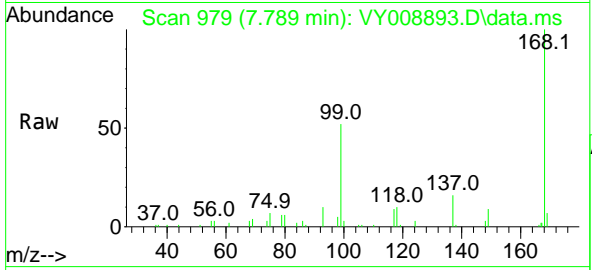
Quant Time: May 20 02:58:00 2022  
 Quant Method : Z:\voasrv\HPCHEM1\MSVOA\_Y\methods\82Y051722S.M  
 Quant Title : SW846 8260  
 QLast Update : Wed May 18 07:32:50 2022  
 Response via : Initial Calibration



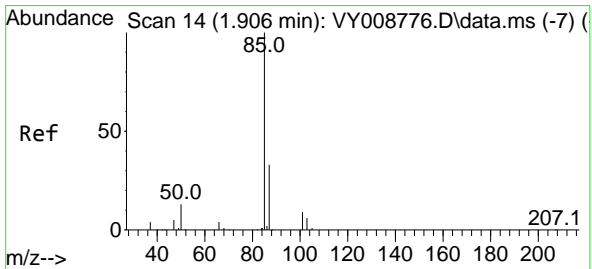
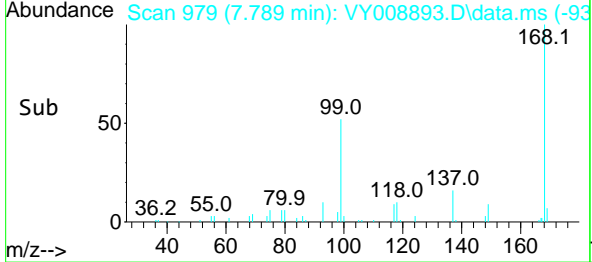
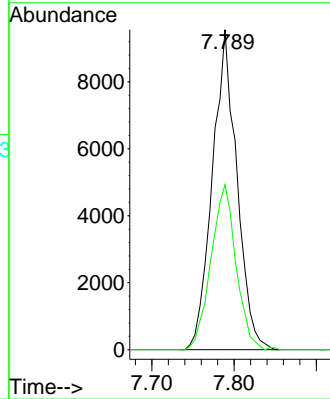


#1  
 Pentafluorobenzene  
 Concen: 50.000 ug/l  
 RT: 7.789 min Scan# 91  
 Delta R.T. -0.000 min  
 Lab File: VY008893.D  
 Acq: 20 May 2022 02:15

Instrument : MSVOA\_Y  
 ClientSampleId : GC-2

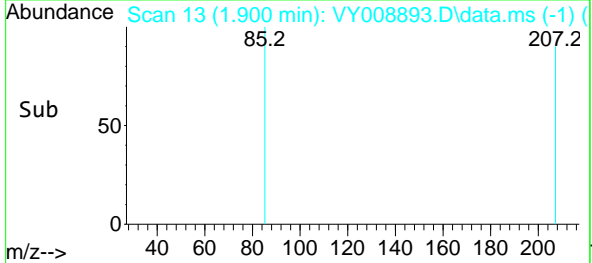
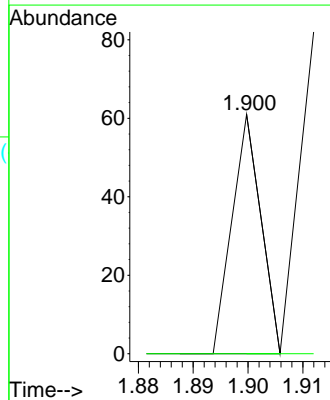
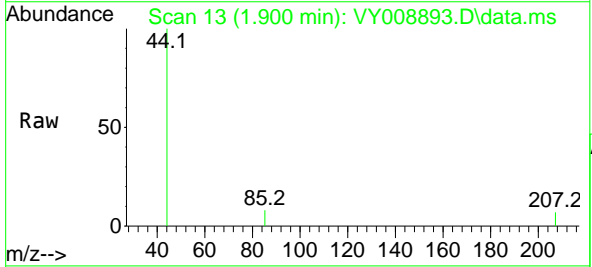


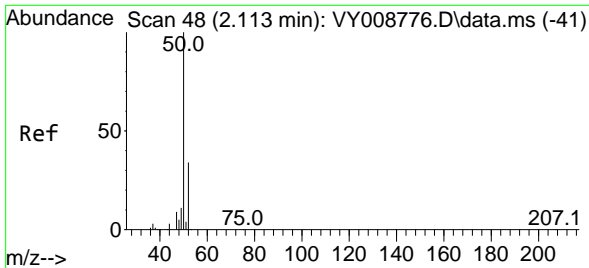
Tgt Ion:168 Resp: 19774  
 Ion Ratio Lower Upper  
 168 100  
 99 51.6 46.9 70.3



#2  
 Dichlorodifluoromethane  
 Concen: Below Cal  
 RT: 1.900 min Scan# 13  
 Delta R.T. -0.006 min  
 Lab File: VY008893.D  
 Acq: 20 May 2022 02:15

Tgt Ion: 85 Resp: 22  
 Ion Ratio Lower Upper  
 85 100  
 87 0.0 16.1 48.2#

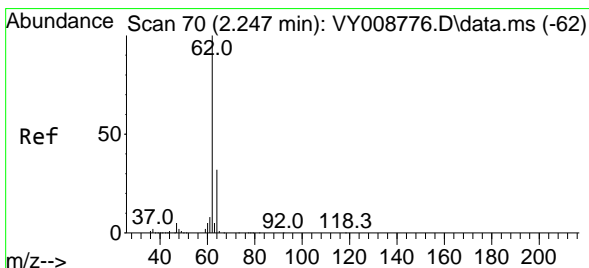
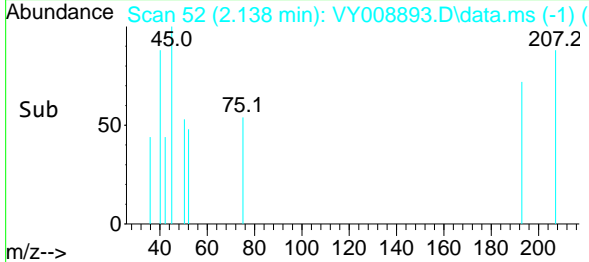
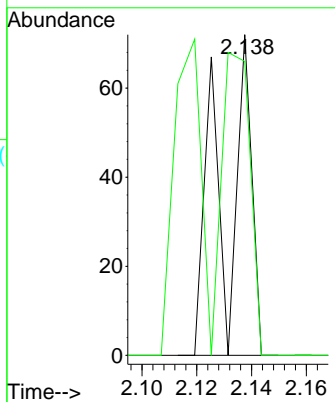
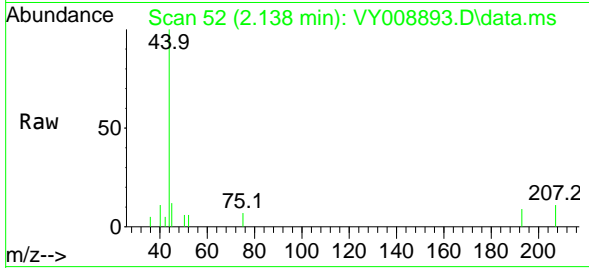




#3  
 Chloromethane  
 Concen: Below Cal  
 RT: 2.138 min Scan# 51  
 Delta R.T. 0.025 min  
 Lab File: VY008893.D  
 Acq: 20 May 2022 02:15

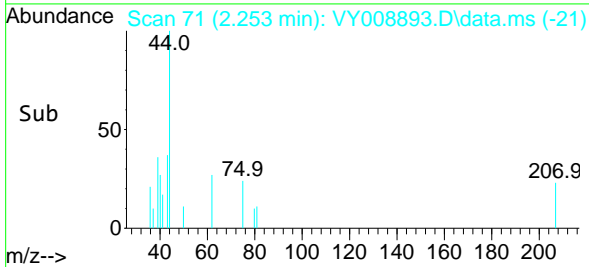
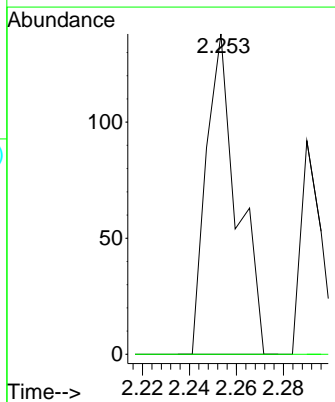
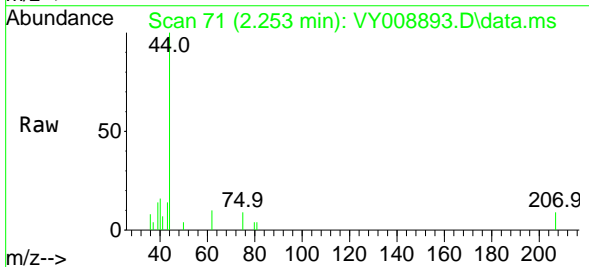
Instrument : MSVOA\_Y  
 ClientSampleId : GC-2

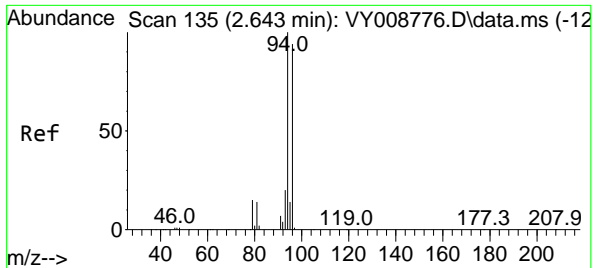
Tgt Ion: 50 Resp: 51  
 Ion Ratio Lower Upper  
 50 100  
 52 91.7 24.6 37.0#



#4  
 Vinyl Chloride  
 Concen: Below Cal  
 RT: 2.253 min Scan# 71  
 Delta R.T. 0.006 min  
 Lab File: VY008893.D  
 Acq: 20 May 2022 02:15

Tgt Ion: 62 Resp: 126  
 Ion Ratio Lower Upper  
 62 100  
 64 0.0 25.0 37.6#

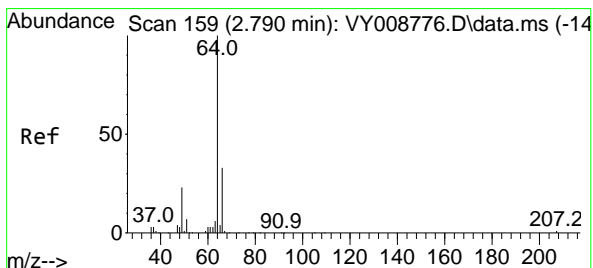
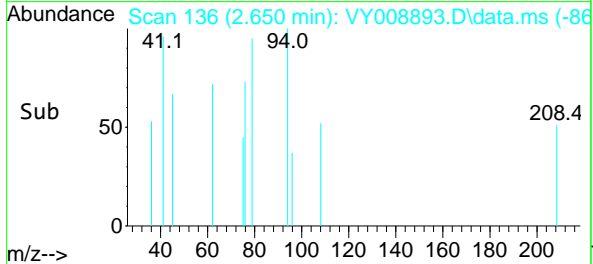
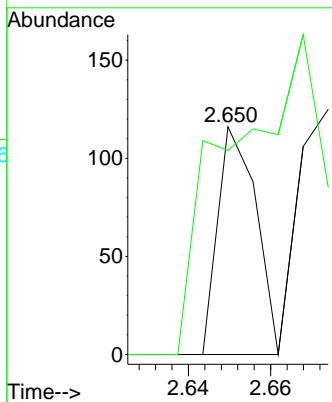
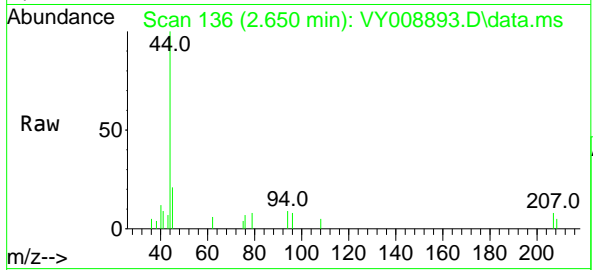




#5  
 Bromomethane  
 Concen: Below Cal  
 RT: 2.650 min Scan# 11  
 Delta R.T. 0.007 min  
 Lab File: VY008893.D  
 Acq: 20 May 2022 02:15

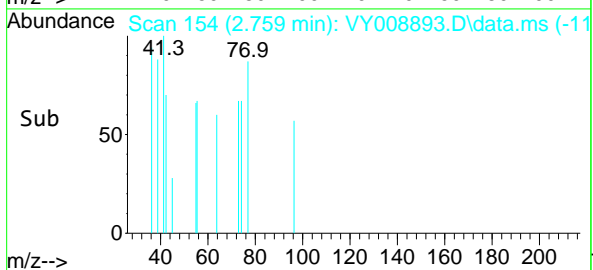
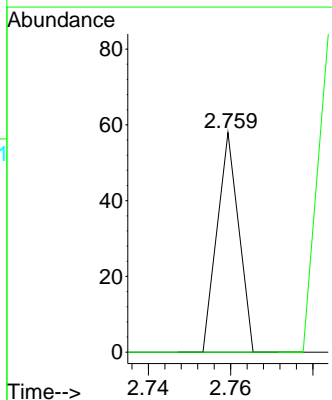
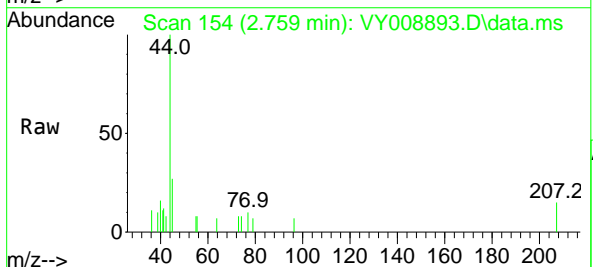
Instrument :  
 MSVOA\_Y  
 ClientSampleId :  
 GC-2

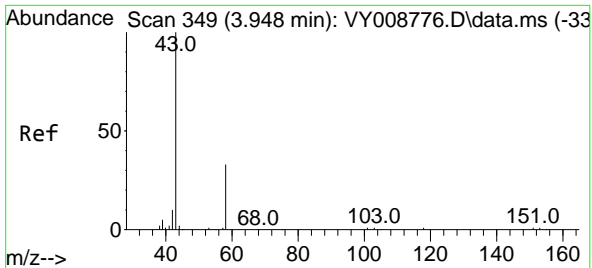
Tgt Ion: 94 Resp: 75  
 Ion Ratio Lower Upper  
 94 100  
 96 89.7 73.5 110.3



#6  
 Chloroethane  
 Concen: Below Cal  
 RT: 2.759 min Scan# 154  
 Delta R.T. -0.031 min  
 Lab File: VY008893.D  
 Acq: 20 May 2022 02:15

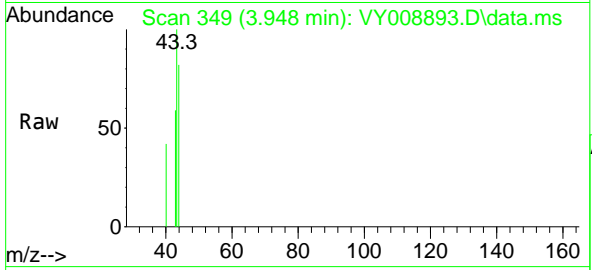
Tgt Ion: 64 Resp: 21  
 Ion Ratio Lower Upper  
 64 100  
 66 0.0 25.4 38.0#



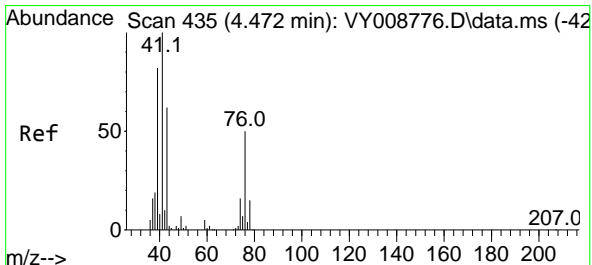
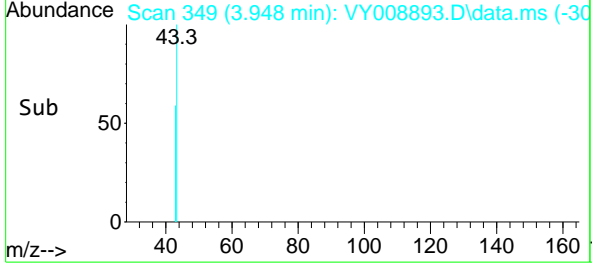
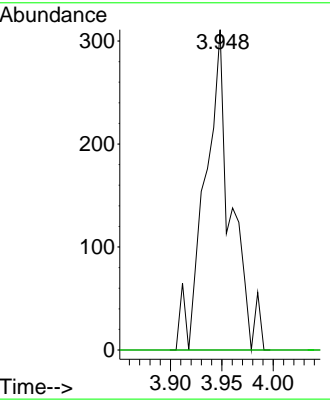


#16  
 Acetone  
 Concen: Below Cal  
 RT: 3.948 min Scan# 349  
 Delta R.T. 0.000 min  
 Lab File: VY008893.D  
 Acq: 20 May 2022 02:15

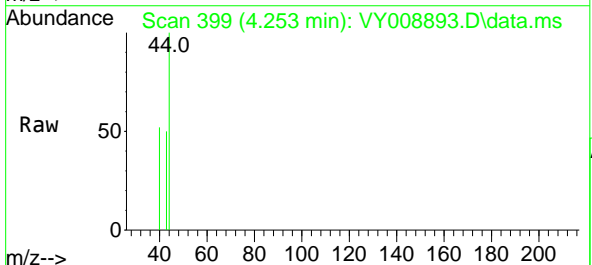
Instrument : MSVOA\_Y  
 ClientSampleId : GC-2



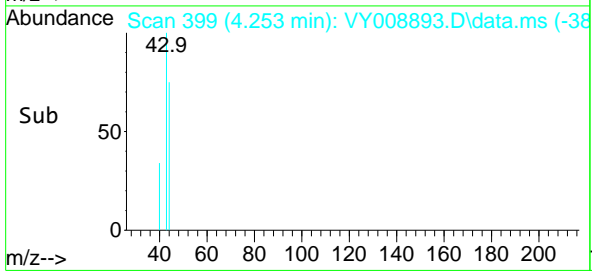
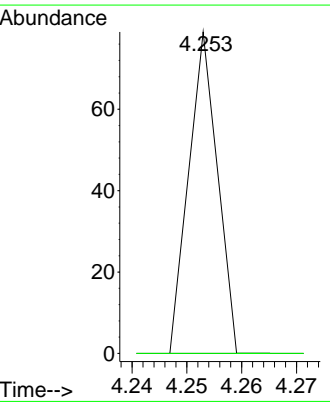
Tgt Ion: 43 Resp: 546  
 Ion Ratio Lower Upper  
 43 100  
 58 0.0 22.0 33.0#

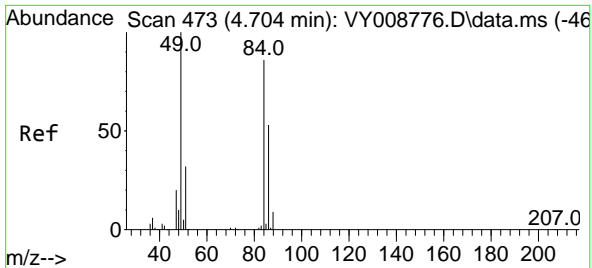


#18  
 Methyl Acetate  
 Concen: Below Cal  
 RT: 4.253 min Scan# 399  
 Delta R.T. -0.219 min  
 Lab File: VY008893.D  
 Acq: 20 May 2022 02:15



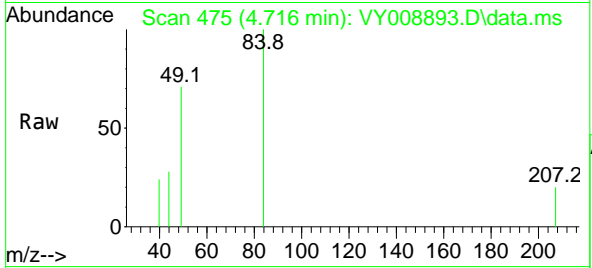
Tgt Ion: 43 Resp: 29  
 Ion Ratio Lower Upper  
 43 100  
 74 0.0 16.6 24.8#





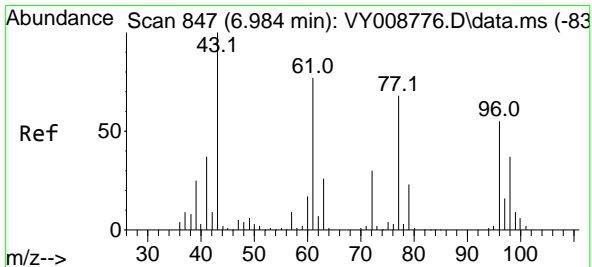
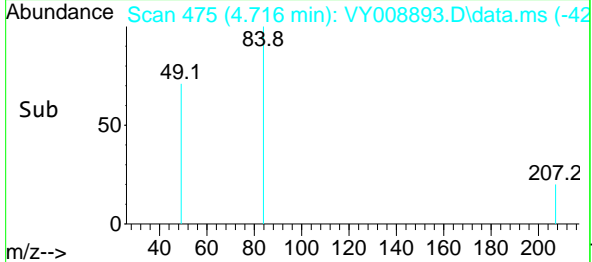
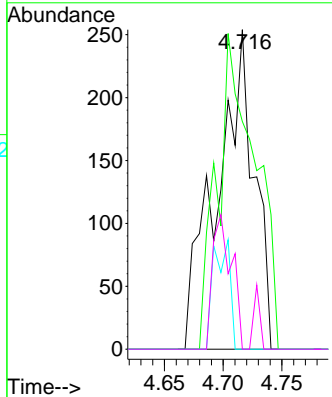
#20  
 Methylene Chloride  
 Concen: Below Cal  
 RT: 4.716 min Scan# 41  
 Delta R.T. 0.012 min  
 Lab File: VY008893.D  
 Acq: 20 May 2022 02:15

Instrument : MSVOA\_Y  
 ClientSampleId : GC-2



Tgt Ion: 84 Resp: 559

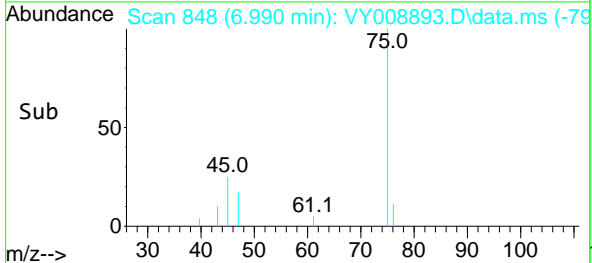
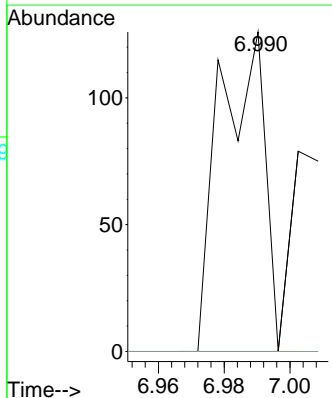
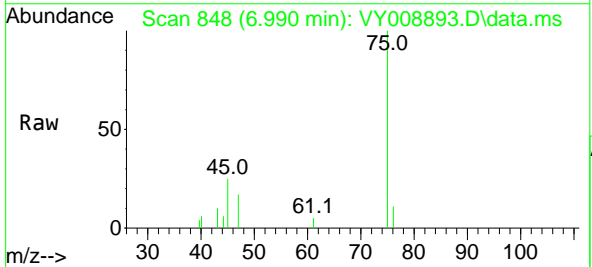
Ion	Ratio	Lower	Upper
84	100		
49	71.3	114.4	171.6#
51	0.0	35.3	52.9#
86	0.0	53.7	80.5#

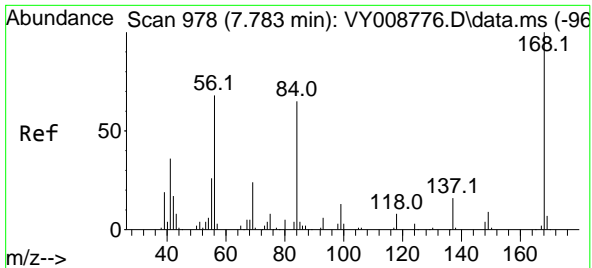


#25  
 2-Butanone  
 Concen: 1.546 ug/l  
 RT: 6.990 min Scan# 848  
 Delta R.T. 0.006 min  
 Lab File: VY008893.D  
 Acq: 20 May 2022 02:15

Tgt Ion: 43 Resp: 119

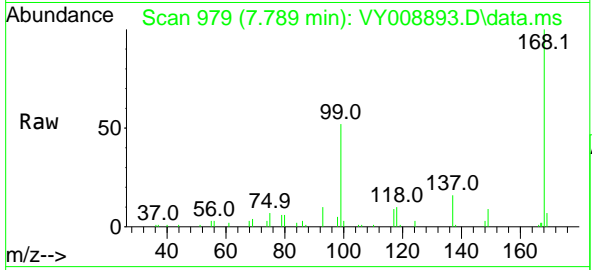
Ion	Ratio	Lower	Upper
43	100		
72	0.0	17.7	26.5#





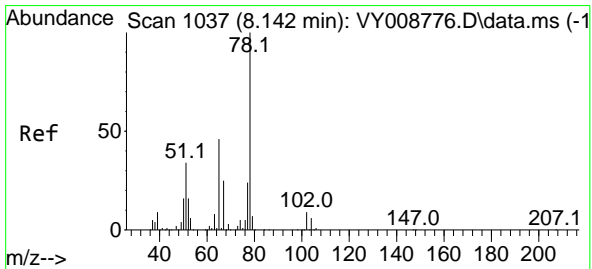
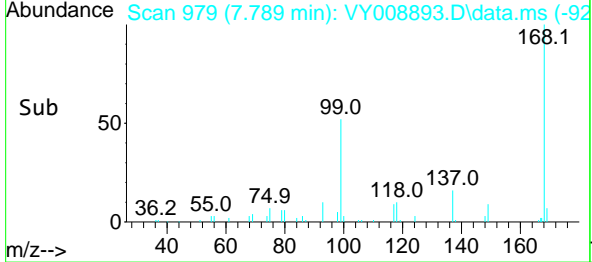
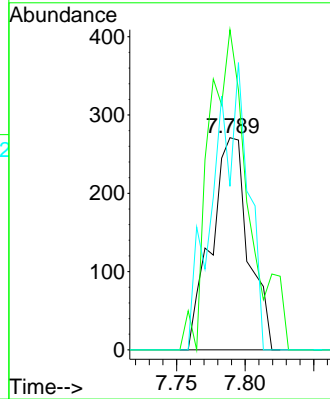
#31  
 Cyclohexane  
 Concen: Below Cal  
 RT: 7.789 min Scan# 91  
 Delta R.T. 0.006 min  
 Lab File: VY008893.D  
 Acq: 20 May 2022 02:15

Instrument : MSVOA\_Y  
 ClientSampleId : GC-2



Tgt Ion: 56 Resp: 511

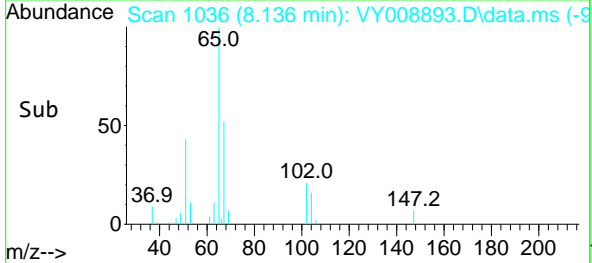
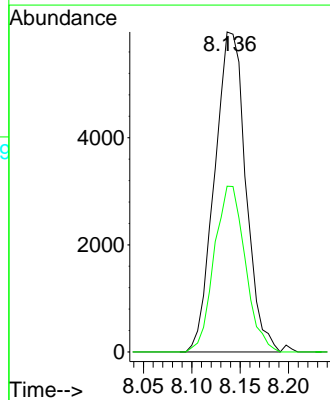
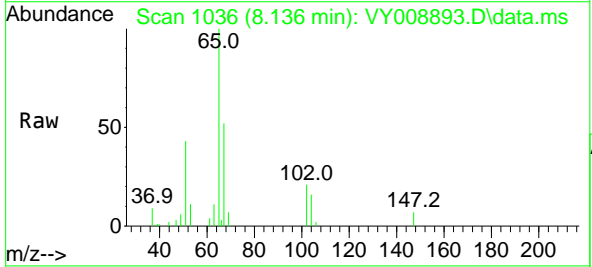
Ion	Ratio	Lower	Upper
56	100		
69	150.9	26.7	40.1#
84	77.1	67.2	100.8



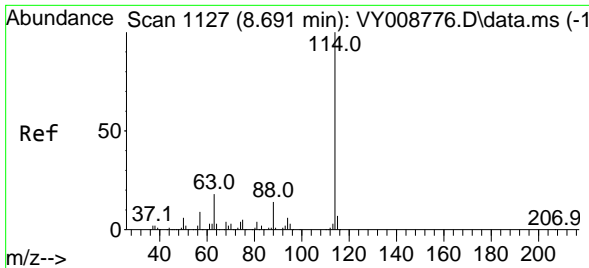
#33  
 1,2-Dichloroethane-d4  
 Concen: 73.030 ug/l  
 RT: 8.136 min Scan# 1036  
 Delta R.T. -0.006 min  
 Lab File: VY008893.D  
 Acq: 20 May 2022 02:15

Tgt Ion: 65 Resp: 13397

Ion	Ratio	Lower	Upper
65	100		
67	51.5	0.0	99.4

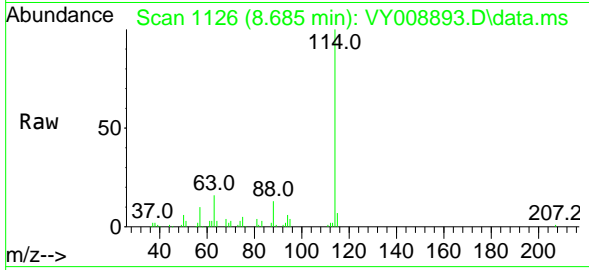




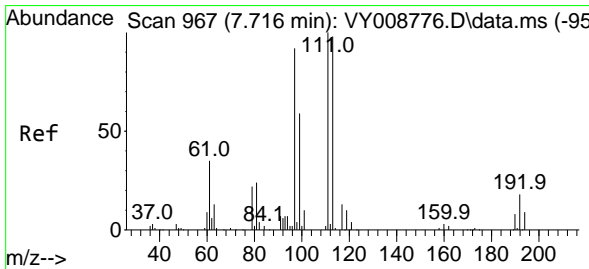
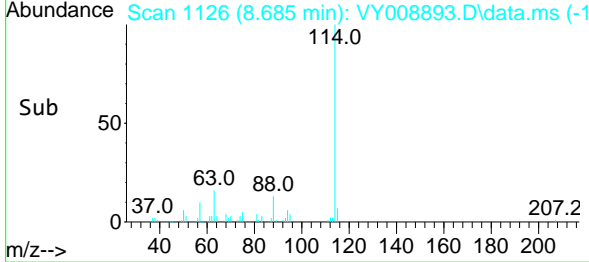
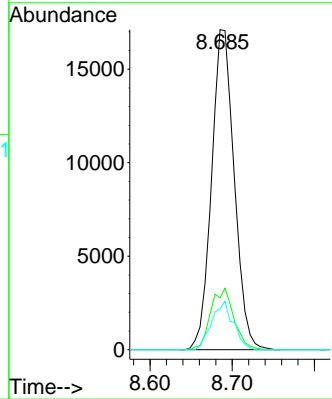


#34  
 1,4-Difluorobenzene  
 Concen: 50.000 ug/l  
 RT: 8.685 min Scan# 1126  
 Delta R.T. -0.006 min  
 Lab File: VY008893.D  
 Acq: 20 May 2022 02:15

Instrument : MSVOA\_Y  
 ClientSampleId : GC-2

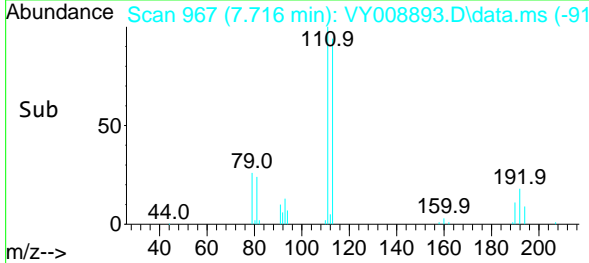
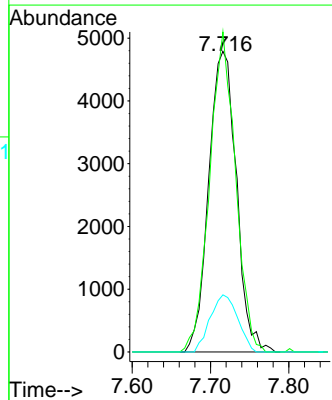
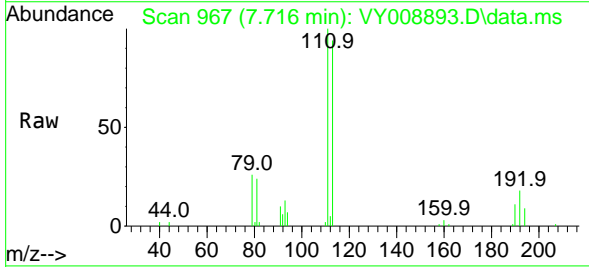


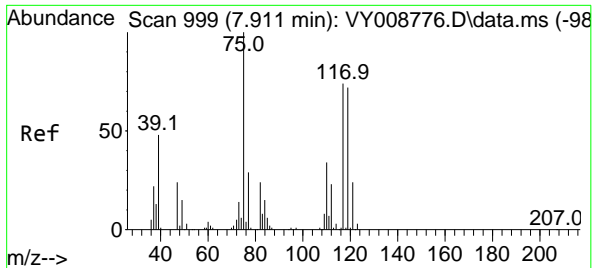
Tgt Ion:114 Resp: 32805  
 Ion Ratio Lower Upper  
 114 100  
 63 16.3 0.0 43.2  
 88 12.7 0.0 31.8



#35  
 Dibromofluoromethane  
 Concen: 61.370 ug/l  
 RT: 7.716 min Scan# 967  
 Delta R.T. 0.000 min  
 Lab File: VY008893.D  
 Acq: 20 May 2022 02:15

Tgt Ion:113 Resp: 11763  
 Ion Ratio Lower Upper  
 113 100  
 111 99.4 82.6 124.0  
 192 18.9 17.6 26.4

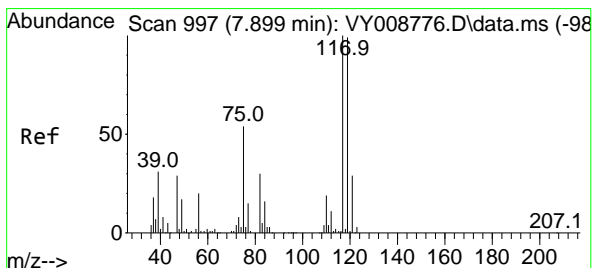
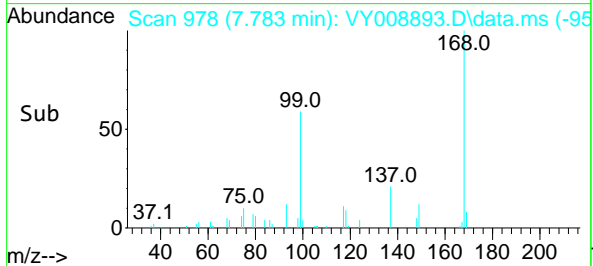
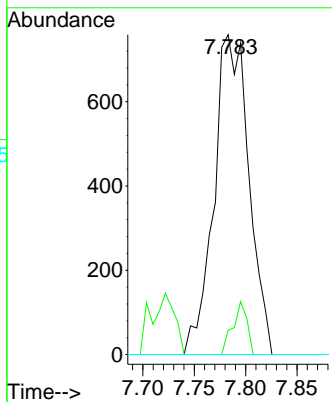
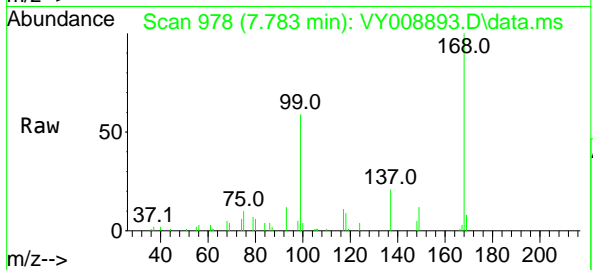




#36  
 1,1-Dichloropropene  
 Concen: 5.837 ug/l  
 RT: 7.783 min Scan# 911  
 Delta R.T. -0.128 min  
 Lab File: VY008893.D  
 Acq: 20 May 2022 02:15

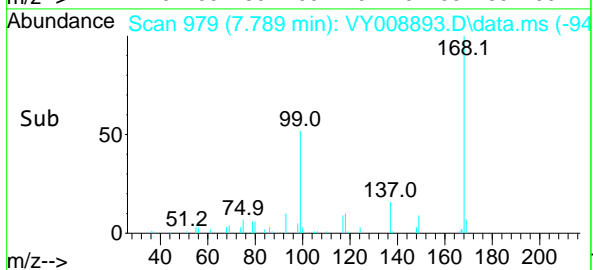
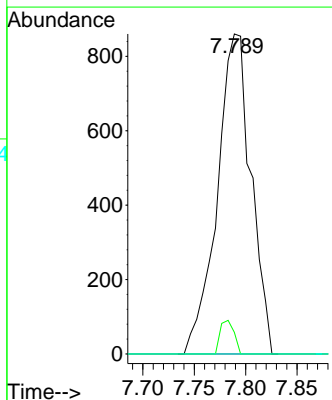
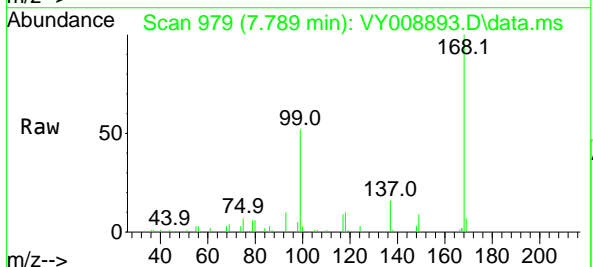
Instrument : MSVOA\_Y  
 ClientSampleId : GC-2

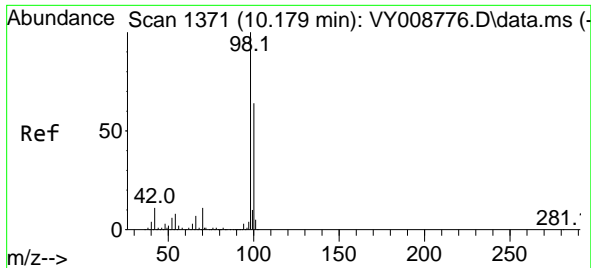
Tgt Ion: 75 Resp: 1792  
 Ion Ratio Lower Upper  
 75 100  
 110 6.8 17.1 51.2#  
 77 0.0 24.4 36.6#



#38  
 Carbon Tetrachloride  
 Concen: 5.973 ug/l  
 RT: 7.789 min Scan# 979  
 Delta R.T. -0.110 min  
 Lab File: VY008893.D  
 Acq: 20 May 2022 02:15

Tgt Ion: 117 Resp: 1965  
 Ion Ratio Lower Upper  
 117 100  
 119 6.7 77.9 116.9#  
 121 0.0 24.8 37.2#

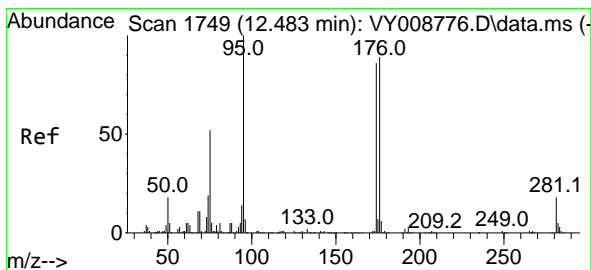
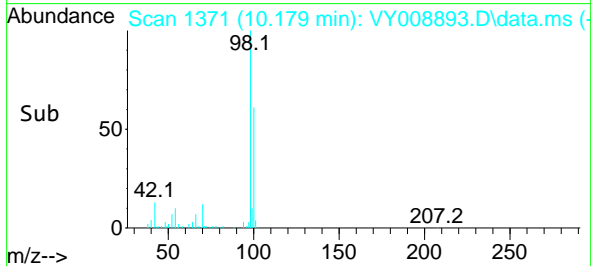
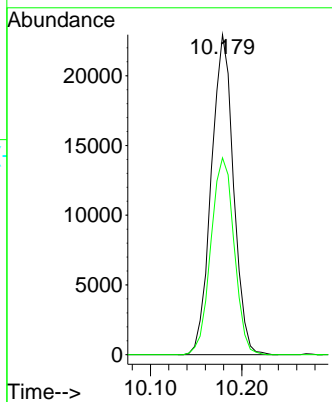
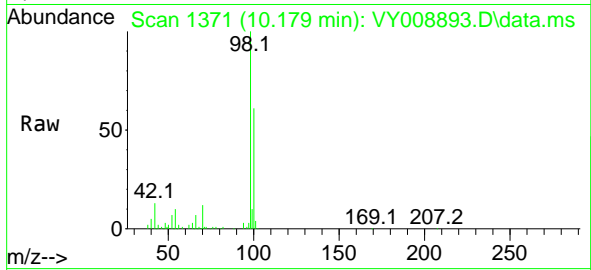




#50  
 Toluene-d8  
 Concen: 45.689 ug/l  
 RT: 10.179 min Scan# 11  
 Delta R.T. -0.000 min  
 Lab File: VY008893.D  
 Acq: 20 May 2022 02:15

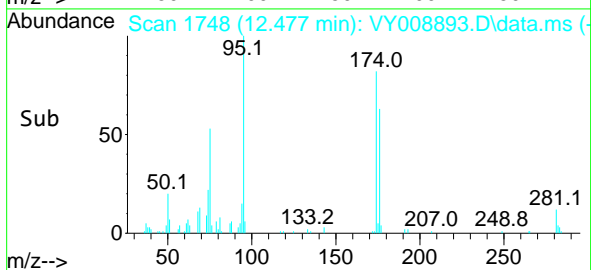
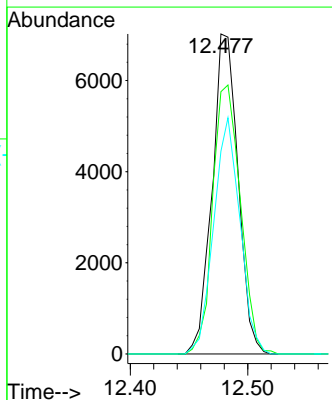
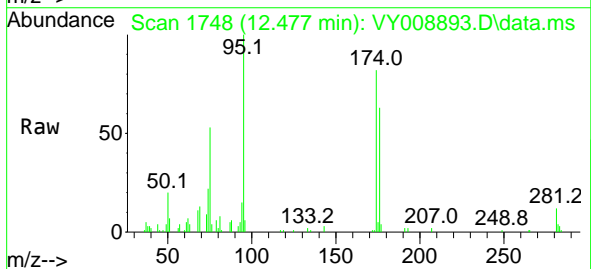
Instrument :  
 MSVOA\_Y  
 ClientSampleId :  
 GC-2

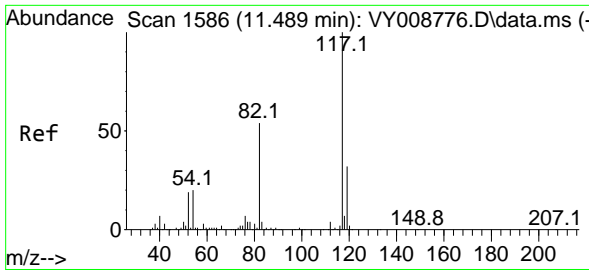
Tgt Ion: 98 Resp: 38677  
 Ion Ratio Lower Upper  
 98 100  
 100 64.4 50.2 75.2



#62  
 4-Bromofluorobenzene  
 Concen: 36.439 ug/l  
 RT: 12.477 min Scan# 1748  
 Delta R.T. -0.006 min  
 Lab File: VY008893.D  
 Acq: 20 May 2022 02:15

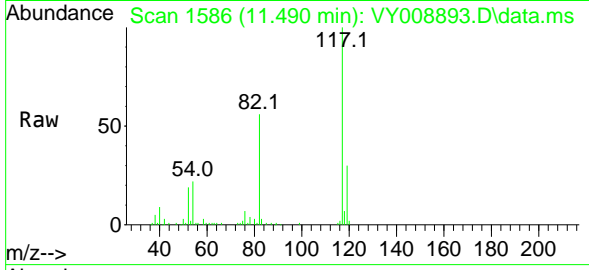
Tgt Ion: 95 Resp: 10770  
 Ion Ratio Lower Upper  
 95 100  
 174 89.8 0.0 177.0  
 176 74.7 0.0 175.8





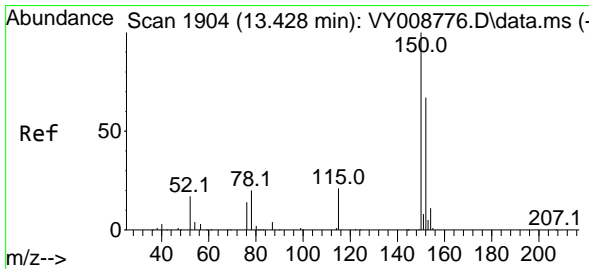
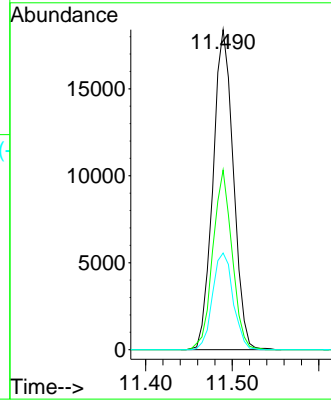
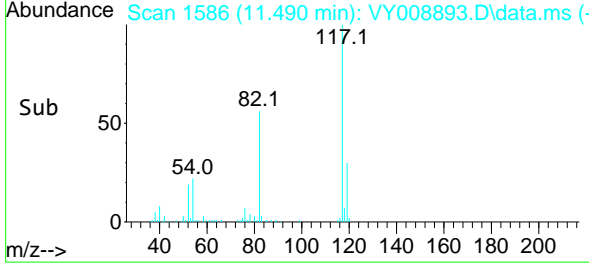
#63  
 Chlorobenzene-d5  
 Concen: 50.000 ug/l  
 RT: 11.490 min Scan# 11  
 Delta R.T. 0.000 min  
 Lab File: VY008893.D  
 Acq: 20 May 2022 02:15

Instrument :  
 MSVOA\_Y  
 ClientSampleId :  
 GC-2

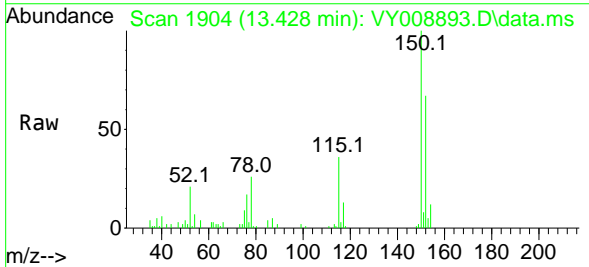


Tgt Ion:117 Resp: 30088

Ion	Ratio	Lower	Upper
117	100		
82	56.2	43.0	64.4
119	30.2	25.4	38.0

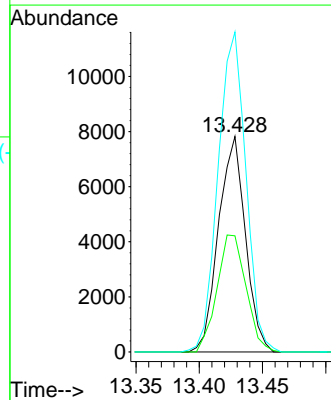
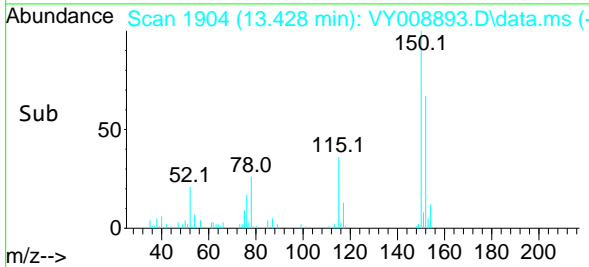


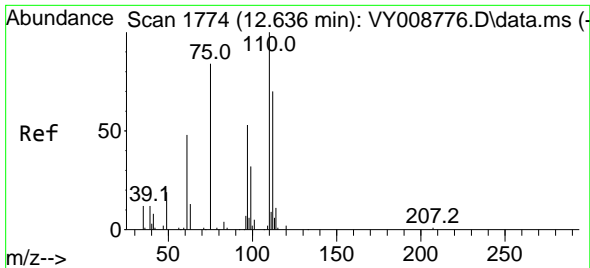
#72  
 1,4-Dichlorobenzene-d4  
 Concen: 50.000 ug/l  
 RT: 13.428 min Scan# 1904  
 Delta R.T. 0.000 min  
 Lab File: VY008893.D  
 Acq: 20 May 2022 02:15



Tgt Ion:152 Resp: 11566

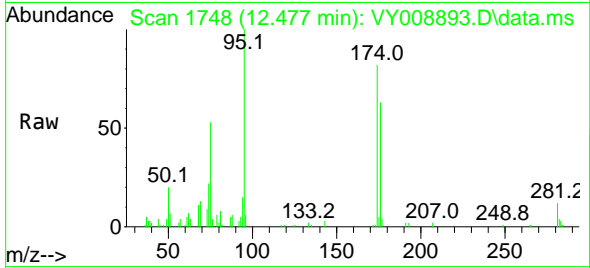
Ion	Ratio	Lower	Upper
152	100		
115	58.5	28.2	84.7
150	153.4	0.0	347.6



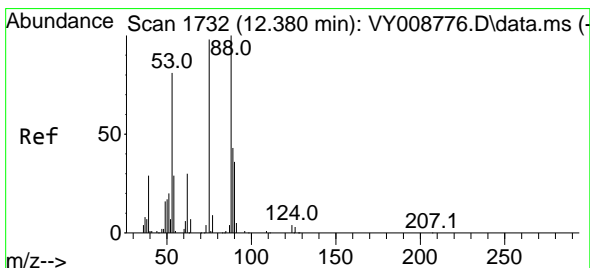
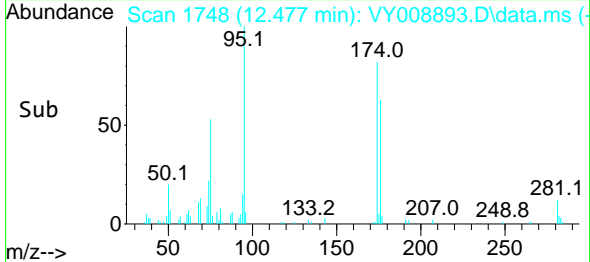
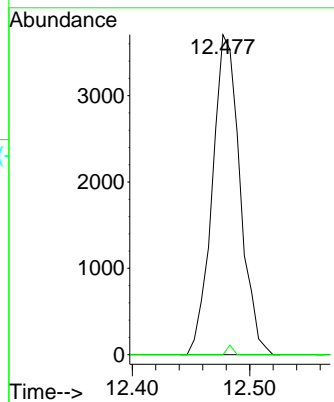


#76  
 1,2,3-Trichloropropane  
 Concen: 45.485 ug/l  
 RT: 12.477 min Scan# 1748  
 Delta R.T. -0.158 min  
 Lab File: VY008893.D  
 Acq: 20 May 2022 02:15

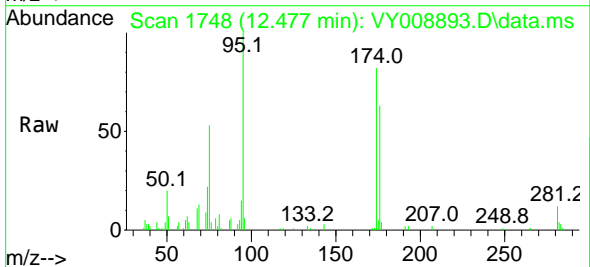
Instrument : MSVOA\_Y  
 ClientSampleId : GC-2



Tgt Ion: 75 Resp: 6077  
 Ion Ratio Lower Upper  
 75 100  
 77 0.7 0.0 0.0#



#81  
 trans-1,4-Dichloro-2-butene  
 Concen: 99.489 ug/l  
 RT: 12.477 min Scan# 1748  
 Delta R.T. 0.098 min  
 Lab File: VY008893.D  
 Acq: 20 May 2022 02:15



Tgt Ion: 75 Resp: 6077  
 Ion Ratio Lower Upper  
 75 100  
 53 0.0 85.3 127.9#  
 89 0.5 37.0 55.4#

