

Data Path : Z:\voasrv\HPCHEM1\MSVOA_Y\Data\VY052225\
 Data File : VY022387.D
 Acq On : 22 May 2025 11:48
 Operator : SY/MD
 Sample : Q2102-01
 Misc : 4.31g/5.0mL/MSVOA_Y/SOIL/B
 ALS Vial : 9 Sample Multiplier: 1

Instrument :
 MSVOA_Y
 ClientSampleId :
 LAW-25-0077

Integration Parameters: RTEINT.P
 Integrator: RTE
 Smoothing : ON
 Sampling : 1
 Start Thrs : 0.2
 Stop Thrs : 0
 Filtering: 5
 Min Area: 3 % of largest Peak
 Max Peaks: 100
 Peak Location: TOP

If leading or trailing edge < 100 prefer < Baseline drop else tangent >
 Peak separation: 5

Method : Z:\voasrv\HPCHEM1\MSVOA_Y\methods\82Y051525S.M
 Title : SW846 8260

Signal : TIC: VY022387.D\data.ms

peak #	R.T. min	first scan	max scan	last scan	PK TY	peak height	corr. area	corr. % max.	% of total
1	2.080	46	59	64	rBV7	11665	39724	2.46%	0.398%
2	2.172	70	74	84	rBV3	25525	51178	3.17%	0.513%
3	2.525	126	132	142	rBV5	6272	19528	1.21%	0.196%
4	6.909	840	851	869	rBV2	89541	349269	21.64%	3.501%
5	7.640	959	971	977	rBV	164358	388600	24.07%	3.896%
6	7.713	977	983	993	rVB	300168	684239	42.39%	6.859%
7	8.067	1027	1041	1054	rBV2	174866	494455	30.63%	4.957%
8	8.622	1118	1132	1144	rBV	463947	923037	57.18%	9.253%
9	10.109	1368	1376	1384	rBV	703439	1208342	74.86%	12.114%
10	10.512	1433	1442	1452	rBV	345677	618491	38.32%	6.200%
11	10.884	1497	1503	1514	rBV	125188	255511	15.83%	2.561%
12	11.420	1585	1591	1601	rVB	562626	896239	55.52%	8.985%
13	11.676	1624	1633	1636	rBV9	28863	90073	5.58%	0.903%
14	12.261	1725	1729	1734	rVB	48267	78269	4.85%	0.785%
15	12.420	1748	1755	1763	rVB2	877925	1614142	100.00%	16.182%
16	12.737	1802	1807	1813	rBV4	49178	88540	5.49%	0.888%
17	12.969	1842	1845	1852	rVB5	43974	80887	5.01%	0.811%
18	13.048	1854	1858	1862	rVB	49656	77294	4.79%	0.775%
19	13.188	1871	1881	1882	rBV4	93468	220649	13.67%	2.212%
20	13.347	1902	1907	1913	rBV	288619	482422	29.89%	4.836%
21	13.676	1956	1961	1966	rBV	197647	290102	17.97%	2.908%
22	13.889	1992	1996	2001	rVB3	76848	130386	8.08%	1.307%
23	14.005	2010	2015	2019	rBV	59295	97772	6.06%	0.980%
24	14.182	2039	2044	2050	rBV8	56361	132077	8.18%	1.324%
25	14.340	2067	2070	2075	rVB6	37522	48592	3.01%	0.487%
26	14.535	2098	2102	2107	rVB2	102020	136600	8.46%	1.369%
27	14.651	2117	2121	2127	rVB4	78046	130329	8.07%	1.307%
28	15.127	2196	2199	2205	rBV5	54731	104645	6.48%	1.049%
29	15.511	2257	2262	2269	rBV7	64801	142817	8.85%	1.432%
30	16.053	2348	2351	2357	rVB4	64441	100867	6.25%	1.011%

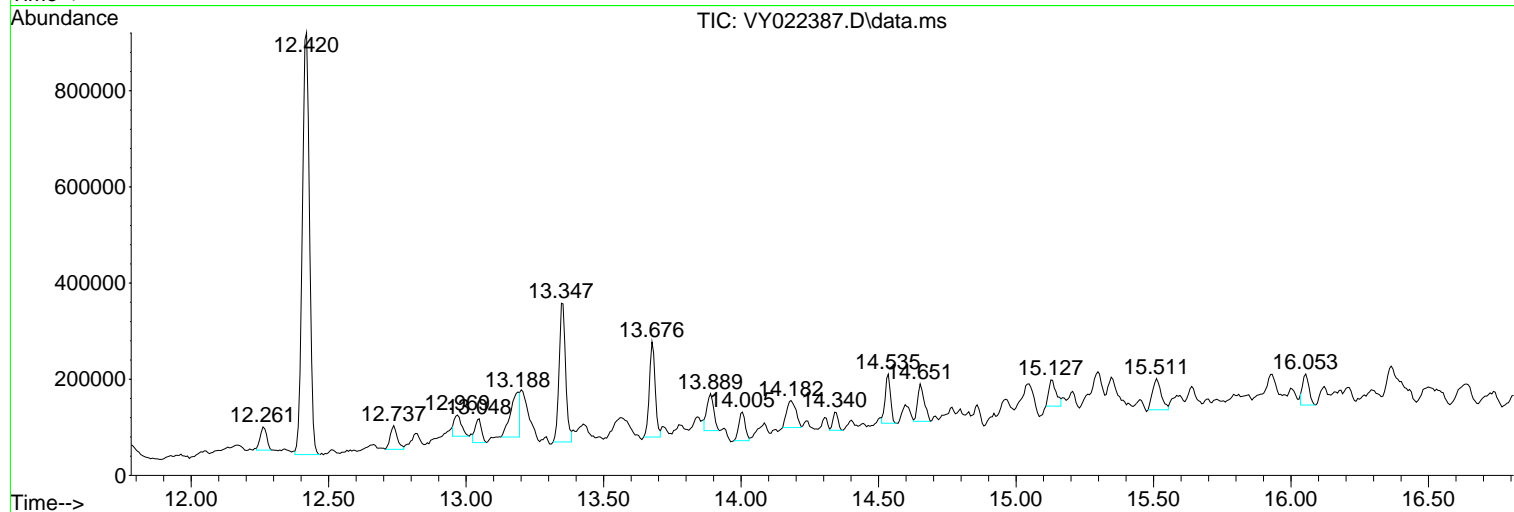
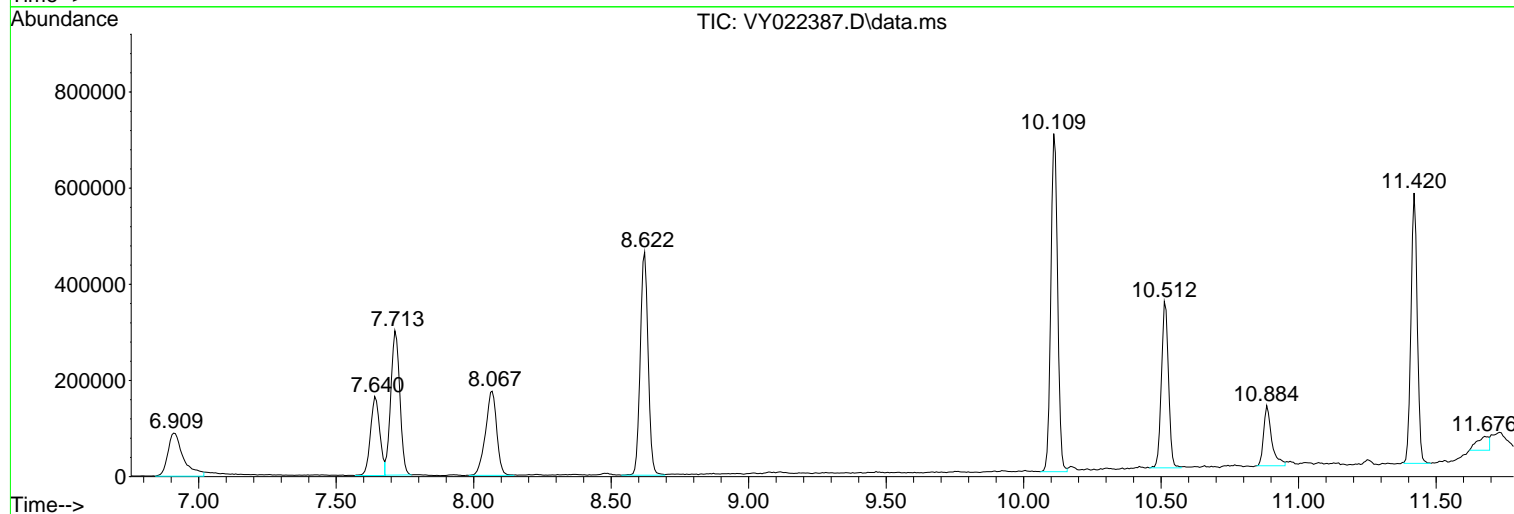
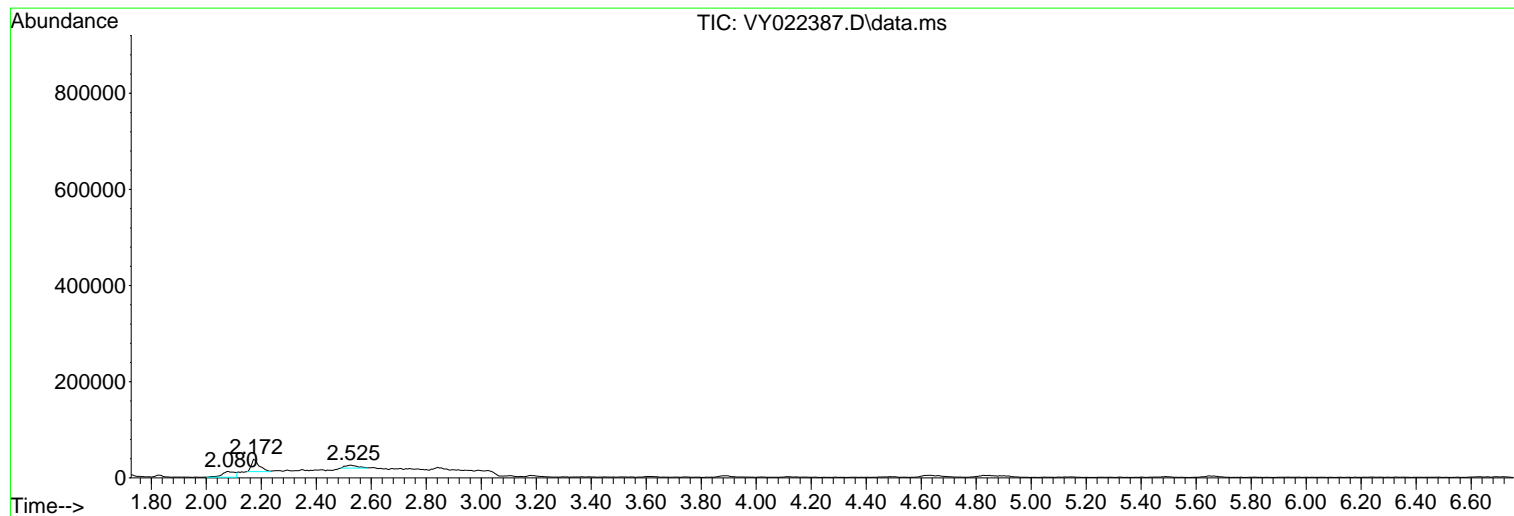
Sum of corrected areas: 9975076

Data Path : Z:\voasrv\HPCHEM1\MSVOA_Y\Data\VY052225\
Data File : VY022387.D
Acq On : 22 May 2025 11:48
Operator : SY/MD
Sample : Q2102-01
Misc : 4.31g/5.0mL/MSVOA_Y/SOIL/B
ALS Vial : 9 Sample Multiplier: 1

Instrument :
MSVOA_Y
ClientSampleId :
LAW-25-0077

Quant Method : Z:\voasrv\HPCHEM1\MSVOA_Y\methods\82Y051525S.M
Quant Title : SW846 8260

TIC Library : C:\Database\NIST20.L
TIC Integration Parameters: LSCINT.P



Data Path : Z:\voasrv\HPCHEM1\MSVOA_Y\Data\VY052225\
 Data File : VY022387.D
 Acq On : 22 May 2025 11:48
 Operator : SY/MD
 Sample : Q2102-01
 Misc : 4.31g/5.0mL/MSVOA_Y/SOIL/B
 ALS Vial : 9 Sample Multiplier: 1

Instrument :
 MSVOA_Y
 ClientSampleId :
 LAW-25-0077

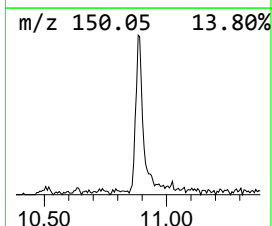
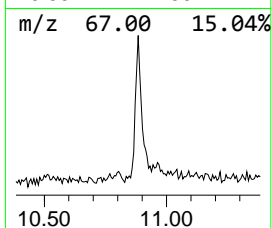
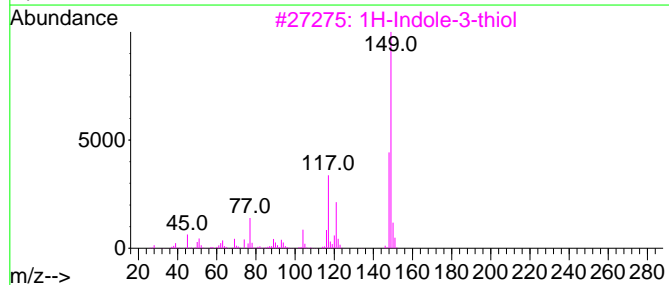
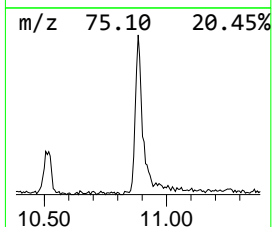
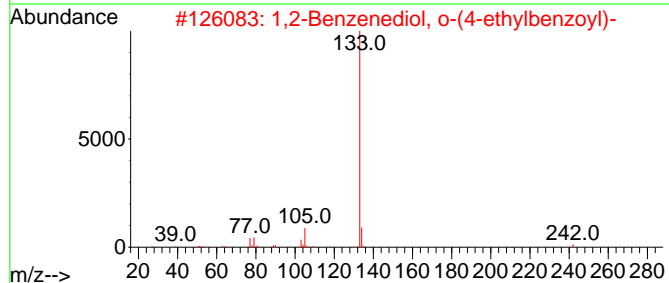
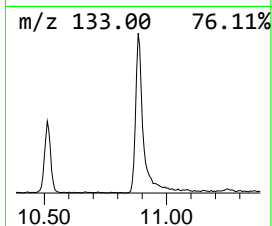
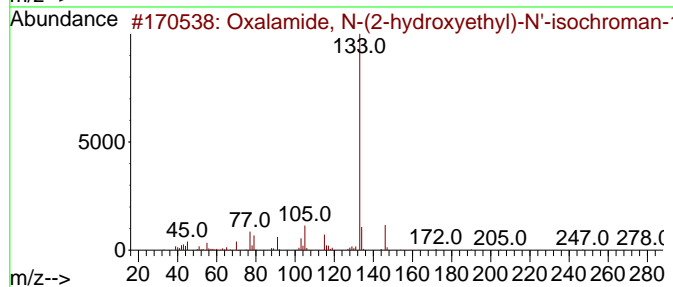
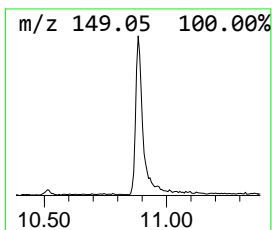
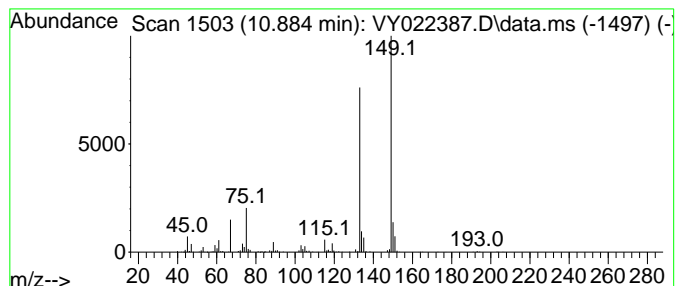
Quant Method : Z:\voasrv\HPCHEM1\MSVOA_Y\methods\82Y051525S.M
 Quant Title : SW846 8260

TIC Library : C:\Database\NIST20.L
 TIC Integration Parameters: LSCINT.P

 Peak Number 3 unknown10.884 Concentration Rank 6

R.T.	EstConc	Area	Relative to ISTD	R.T.
10.884	14.25 ug/l	255511	Chlorobenzene-d5	11.420

Hit#	of	5	Tentative ID	MW	MolForm	CAS#	Qual
1			Oxalamide, N-(2-hydroxyethyl)-N'...	278	C14H18N2O4	1000304-26-2	27
2			1,2-Benzenediol, o-(4-ethylbenzo...	242	C15H14O3	1000325-96-6	27
3			1H-Indole-3-thiol	149	C8H7NS	000480-94-4	25
4			7-Methylthieno[3,2-b]pyridine	149	C8H7NS	013362-83-9	25
5			4-Methylthieno[2,3-b]pyridine	149	C8H7NS	013362-81-7	25



Data Path : Z:\voasrv\HPCHEM1\MSVOA_Y\Data\VY052225\
 Data File : VY022387.D
 Acq On : 22 May 2025 11:48
 Operator : SY/MD
 Sample : Q2102-01
 Misc : 4.31g/5.0mL/MSVOA_Y/SOIL/B
 ALS Vial : 9 Sample Multiplier: 1

Instrument :
 MSVOA_Y
 ClientSampleId :
 LAW-25-0077

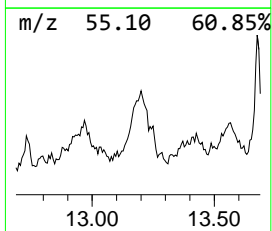
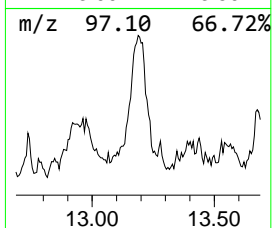
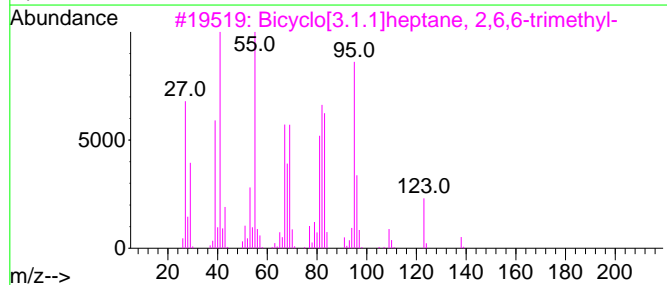
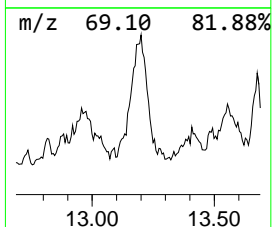
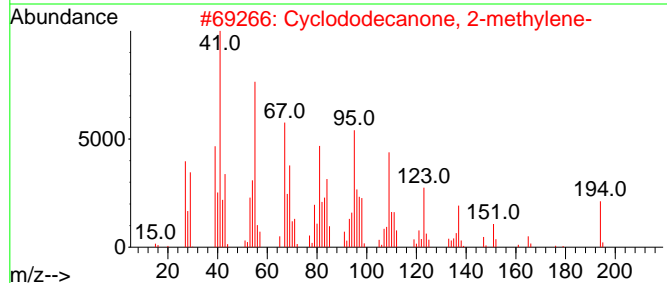
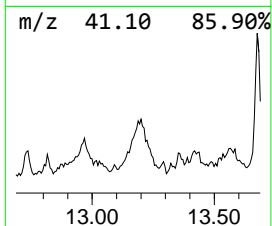
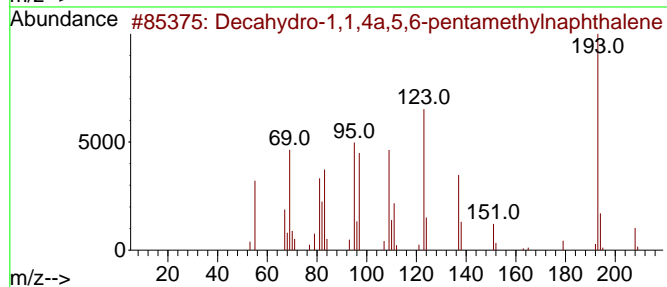
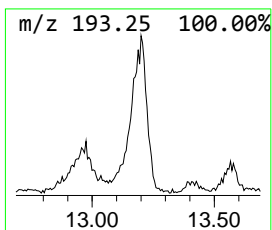
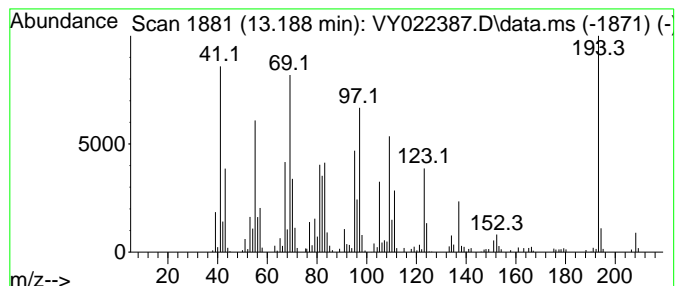
Quant Method : Z:\voasrv\HPCHEM1\MSVOA_Y\methods\82Y051525S.M
 Quant Title : SW846 8260

TIC Library : C:\Database\NIST0.L
 TIC Integration Parameters: LSCINT.P

 Peak Number 4 unknown13.188 Concentration Rank 4

R.T.	EstConc	Area	Relative to ISTD	R.T.
13.188	22.87 ug/l	220649	1,4-Dichlorobenzene-d4	13.353

Hit#	of	5	Tentative ID	MW	MolForm	CAS#	Qual
1			Decahydro-1,1,4a,5,6-pentamethyl...	208	C15H28	080655-44-3	49
2			Cyclododecanone, 2-methylene-	194	C13H22O	003045-76-9	38
3			Bicyclo[3.1.1]heptane, 2,6,6-tri...	138	C10H18	000473-55-2	25
4			3-Propylglutaric acid, monomethy...	188	C9H16O4	1000254-25-9	22
5			1-Cyclohexylnonene	208	C15H28	114614-84-5	18



Data Path : Z:\voasrv\HPCHEM1\MSVOA_Y\Data\VY052225\
 Data File : VY022387.D
 Acq On : 22 May 2025 11:48
 Operator : SY/MD
 Sample : Q2102-01
 Misc : 4.31g/5.0mL/MSVOA_Y/SOIL/B
 ALS Vial : 9 Sample Multiplier: 1

Instrument :
 MSVOA_Y
 ClientSampleId :
 LAW-25-0077

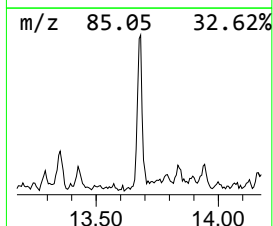
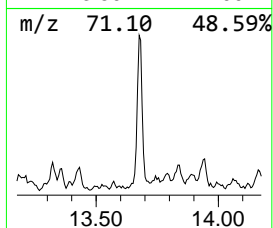
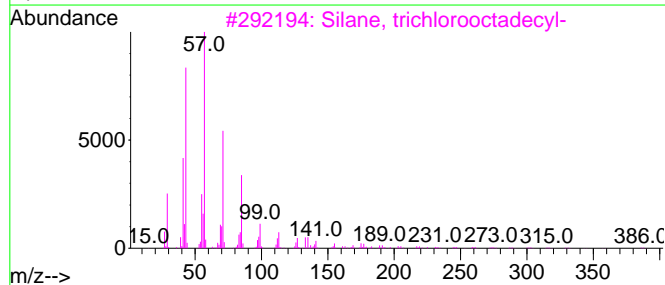
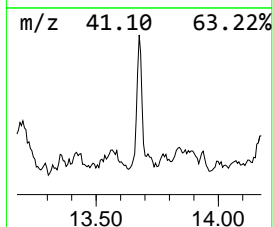
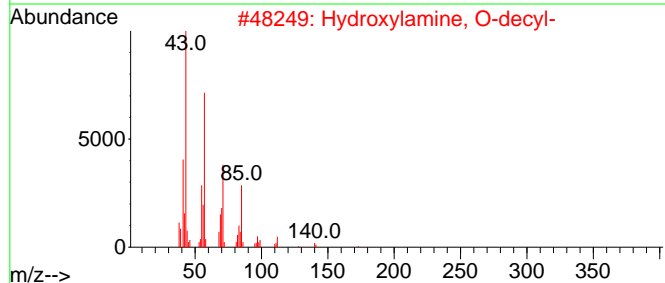
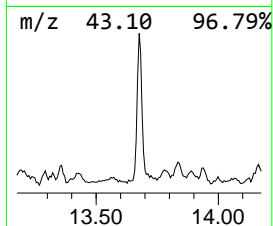
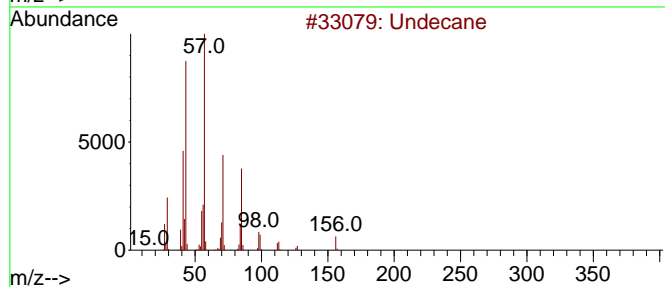
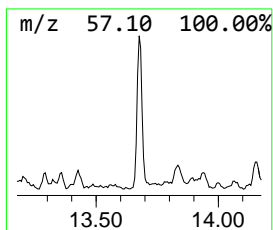
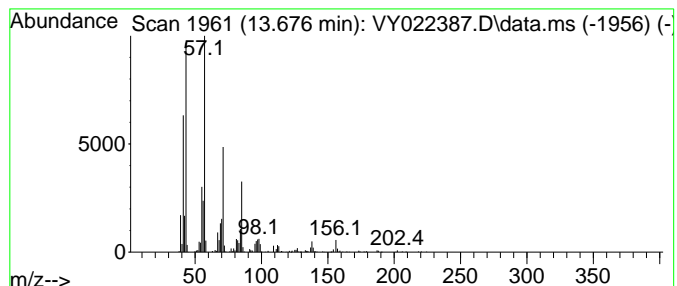
Quant Method : Z:\voasrv\HPCHEM1\MSVOA_Y\methods\82Y051525S.M
 Quant Title : SW846 8260

TIC Library : C:\Database\NIST20.L
 TIC Integration Parameters: LSCINT.P

 Peak Number 5 Undecane Concentration Rank 2

R.T.	EstConc	Area	Relative to ISTD	R.T.
13.676	30.07 ug/l	290102	1,4-Dichlorobenzene-d4	13.353

Hit#	of 5	Tentative ID	MW	MolForm	CAS#	Qual
1		Undecane	156	C11H24	001120-21-4	87
2		Hydroxylamine, O-decyl-	173	C10H23NO	029812-79-1	76
3		Silane, trichlorooctadecyl-	386	C18H37Cl3Si	000112-04-9	72
4		Tridecane	184	C13H28	000629-50-5	72
5		Hexadecane	226	C16H34	000544-76-3	59



Data Path : Z:\voasrv\HPCHEM1\MSVOA_Y\Data\VY052225\
 Data File : VY022387.D
 Acq On : 22 May 2025 11:48
 Operator : SY/MD
 Sample : Q2102-01
 Misc : 4.31g/5.0mL/MSVOA_Y/SOIL/B
 ALS Vial : 9 Sample Multiplier: 1

Instrument :
 MSVOA_Y
 ClientSampleId :
 LAW-25-0077

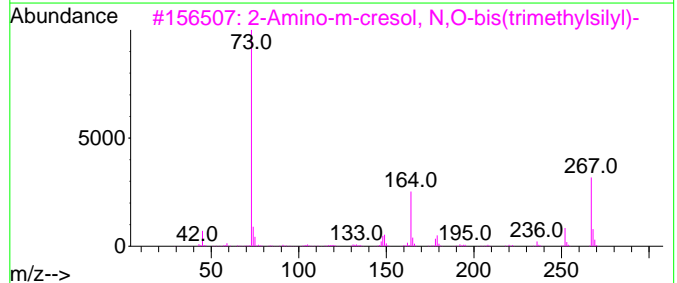
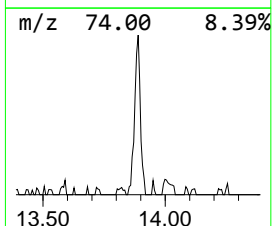
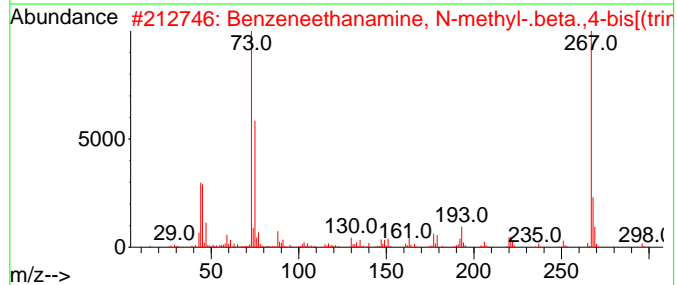
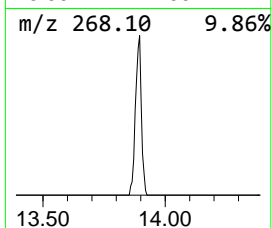
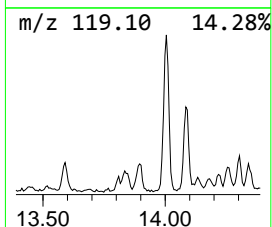
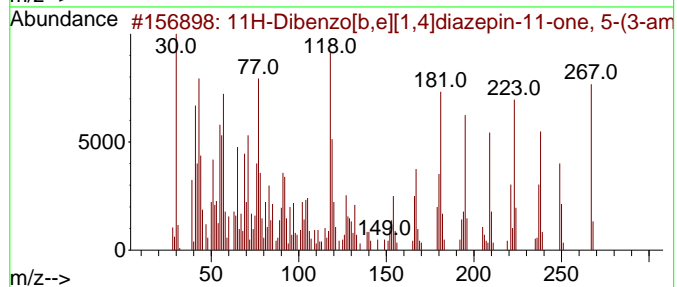
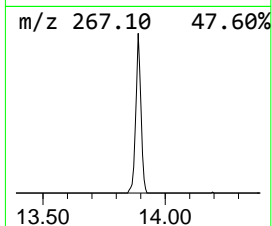
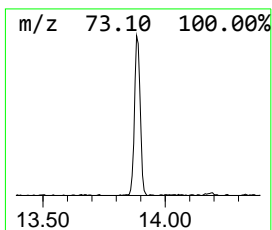
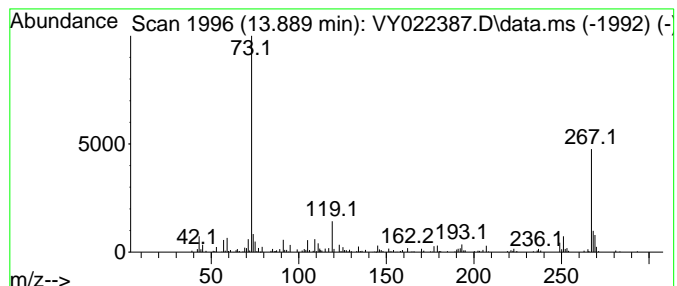
Quant Method : Z:\voasrv\HPCHEM1\MSVOA_Y\methods\82Y051525S.M
 Quant Title : SW846 8260

TIC Library : C:\Database\NIST0.L
 TIC Integration Parameters: LSCINT.P

 Peak Number 6 11H-Dibenzo[b,e][1,4]diazep... Concentration Rank 9

R.T.	EstConc	Area	Relative to ISTD	R.T.
13.889	13.51 ug/l	130386	1,4-Dichlorobenzene-d4	13.353

Hit#	of 5	Tentative ID	MW	MolForm	CAS#	Qual
1		11H-Dibenzo[b,e][1,4]diazepin-11...	267	C16H17N3O	013450-73-2	96
2		Benzeneethanamine, N-methyl-.bet...	311	C15H29NO2Si2	029522-18-7	45
3		2-Amino-m-cresol, N,O-bis(trimet...	267	C13H25NOSi2	1000449-77-1	42
4		4-(Methylamino)phenol, N,O-bis(t...	267	C13H25NOSi2	1000471-13-0	42
5		5-(4-Fluorophenyl)-1,3-oxazole-2...	267	C12H14FNOSSi	1000497-07-6	42



Data Path : Z:\voasrv\HPCHEM1\MSVOA_Y\Data\VY052225\
 Data File : VY022387.D
 Acq On : 22 May 2025 11:48
 Operator : SY/MD
 Sample : Q2102-01
 Misc : 4.31g/5.0mL/MSVOA_Y/SOIL/B
 ALS Vial : 9 Sample Multiplier: 1

Instrument :
 MSVOA_Y
 ClientSampleId :
 LAW-25-0077

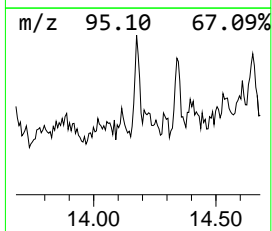
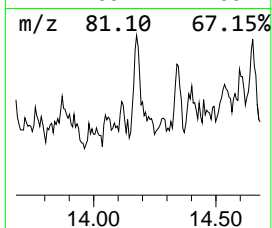
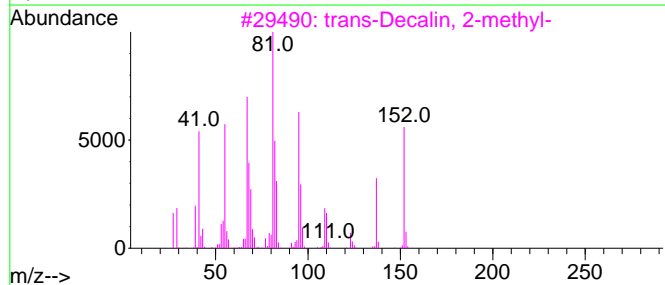
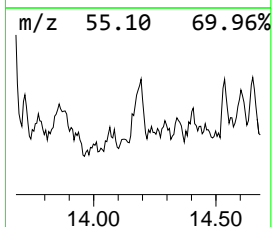
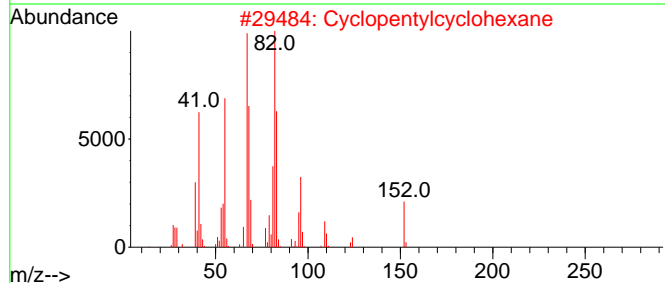
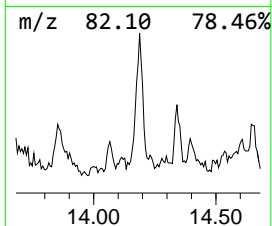
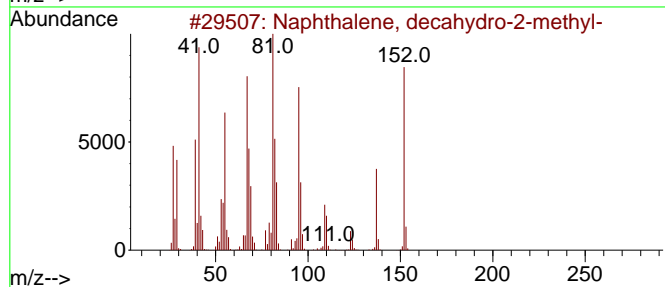
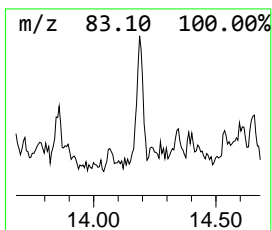
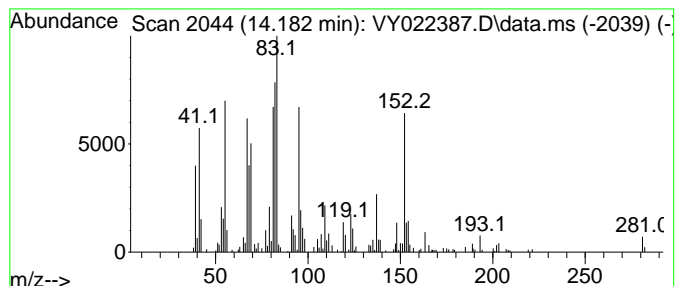
Quant Method : Z:\voasrv\HPCHEM1\MSVOA_Y\methods\82Y051525S.M
 Quant Title : SW846 8260

TIC Library : C:\Database\NIST20.L
 TIC Integration Parameters: LSCINT.P

 Peak Number 7 Naphthalene, decahydro-2-me... Concentration Rank 8

R.T.	EstConc	Area	Relative to ISTD	R.T.
14.182	13.69 ug/l	132077	1,4-Dichlorobenzene-d4	13.353

Hit#	of	5	Tentative ID	MW	MolForm	CAS#	Qual
1			Naphthalene, decahydro-2-methyl-	152	C11H20	002958-76-1	83
2			Cyclopentylcyclohexane	152	C11H20	001606-08-2	58
3			trans-Decalin, 2-methyl-	152	C11H20	1000152-47-3	52
4			Cyclohexanone, 2-methyl-5-(1-met...	152	C10H16O	005948-04-9	49
5			Cyclodecene, 1-methyl-	152	C11H20	066633-38-3	43



Data Path : Z:\voasrv\HPCHEM1\MSVOA_Y\Data\VY052225\
 Data File : VY022387.D
 Acq On : 22 May 2025 11:48
 Operator : SY/MD
 Sample : Q2102-01
 Misc : 4.31g/5.0mL/MSVOA_Y/SOIL/B
 ALS Vial : 9 Sample Multiplier: 1

Instrument :
 MSVOA_Y
 ClientSampleId :
 LAW-25-0077

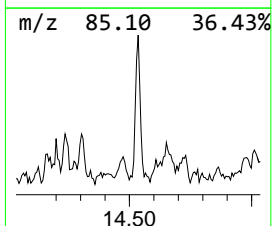
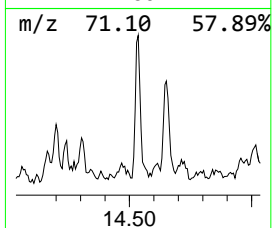
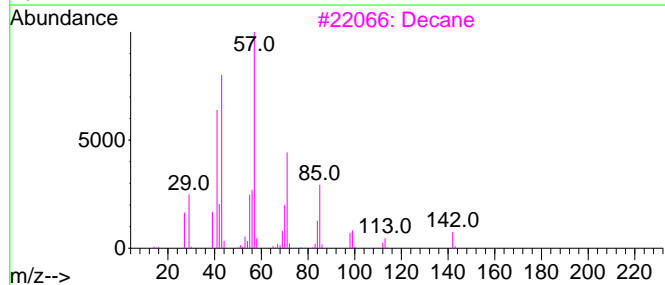
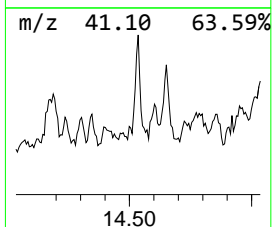
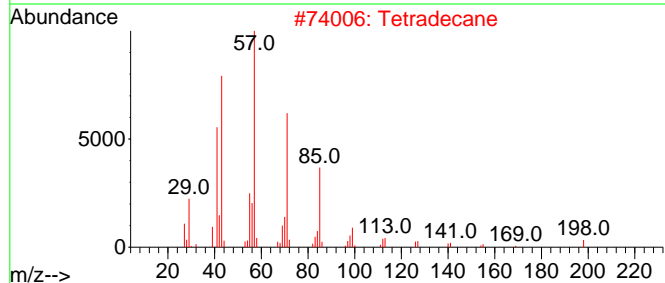
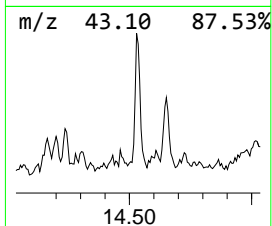
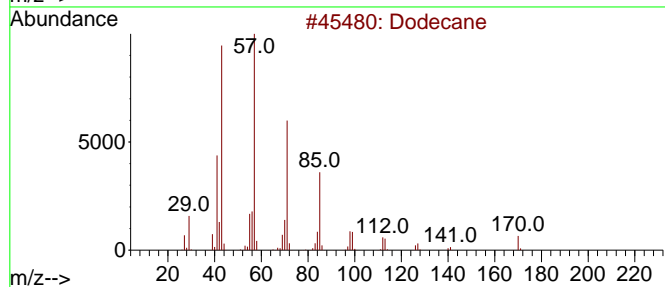
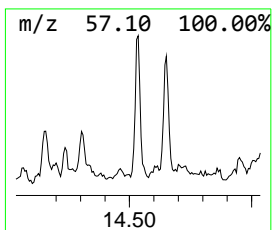
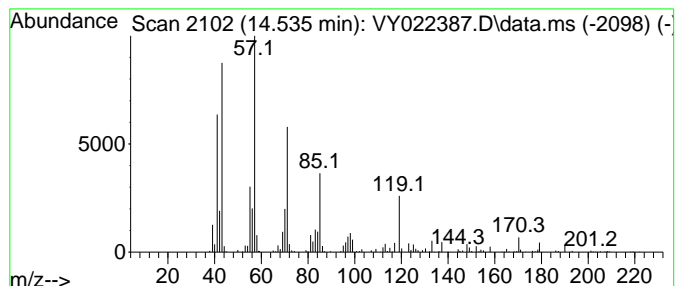
Quant Method : Z:\voasrv\HPCHEM1\MSVOA_Y\methods\82Y051525S.M
 Quant Title : SW846 8260

TIC Library : C:\Database\NIST0.L
 TIC Integration Parameters: LSCINT.P

 Peak Number 8 Dodecane Concentration Rank 7

R.T.	EstConc	Area	Relative to ISTD	R.T.
14.535	14.16 ug/l	136600	1,4-Dichlorobenzene-d4	13.353

Hit#	of 5	Tentative ID	MW	MolForm	CAS#	Qual
1		Dodecane	170	C12H26	000112-40-3	76
2		Tetradecane	198	C14H30	000629-59-4	53
3		Decane	142	C10H22	000124-18-5	53
4		Undecane	156	C11H24	001120-21-4	47
5		Decane, 2,3,8-trimethyl-	184	C13H28	062238-14-6	47



Data Path : Z:\voasrv\HPCHEM1\MSVOA_Y\Data\VY052225\
 Data File : VY022387.D
 Acq On : 22 May 2025 11:48
 Operator : SY/MD
 Sample : Q2102-01
 Misc : 4.31g/5.0mL/MSVOA_Y/SOIL/B
 ALS Vial : 9 Sample Multiplier: 1

Instrument :
 MSVOA_Y
 ClientSampleId :
 LAW-25-0077

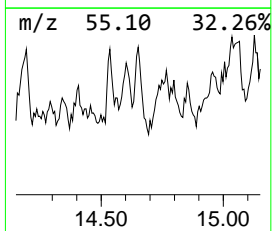
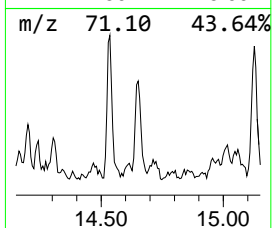
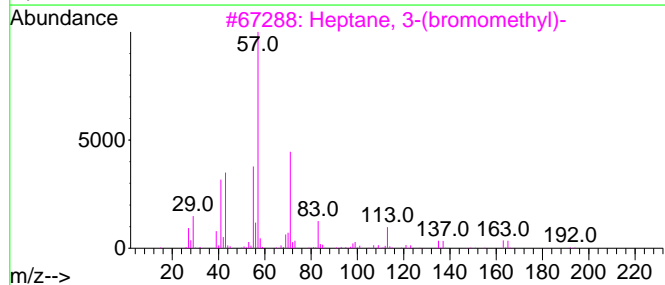
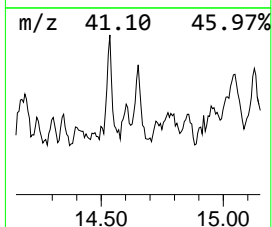
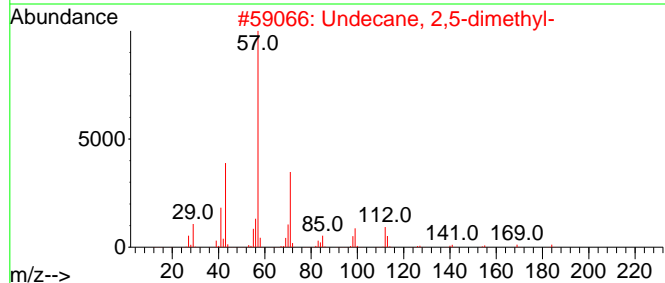
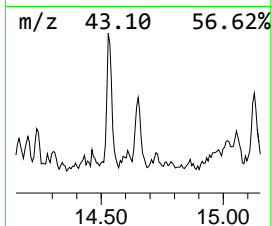
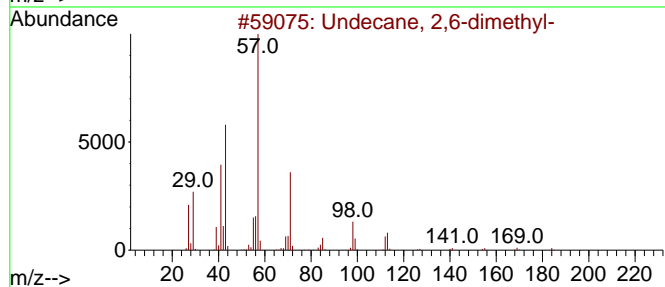
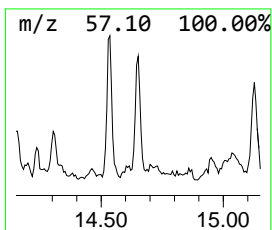
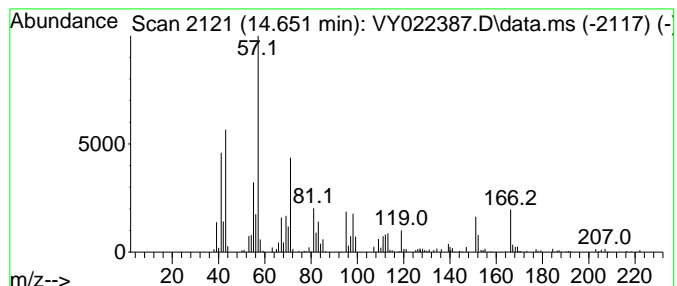
Quant Method : Z:\voasrv\HPCHEM1\MSVOA_Y\methods\82Y051525S.M
 Quant Title : SW846 8260

TIC Library : C:\Database\NIST0.L
 TIC Integration Parameters: LSCINT.P

 Peak Number 9 Undecane, 2,6-dimethyl- Concentration Rank 10

R.T.	EstConc	Area	Relative to ISTD	R.T.
14.651	13.51 ug/l	130329	1,4-Dichlorobenzene-d4	13.353

Hit#	of	5	Tentative ID	MW	MolForm	CAS#	Qual
1			Undecane, 2,6-dimethyl-	184	C13H28	017301-23-4	87
2			Undecane, 2,5-dimethyl-	184	C13H28	017301-22-3	43
3			Heptane, 3-(bromomethyl)-	192	C8H17Br	018908-66-2	38
4			Octane, 4-ethyl-	142	C10H22	015869-86-0	38
5			Heptacosane	380	C27H56	000593-49-7	35



Data Path : Z:\voasrv\HPCHEM1\MSVOA_Y\Data\VY052225\
 Data File : VY022387.D
 Acq On : 22 May 2025 11:48
 Operator : SY/MD
 Sample : Q2102-01
 Misc : 4.31g/5.0mL/MSVOA_Y/SOIL/B
 ALS Vial : 9 Sample Multiplier: 1

Instrument :
 MSVOA_Y
 ClientSampleId :
 LAW-25-0077

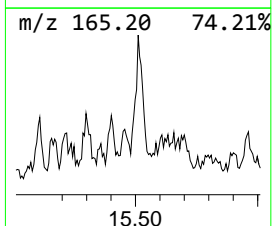
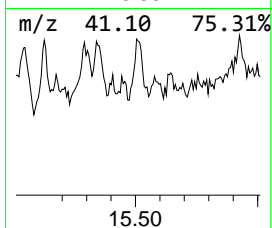
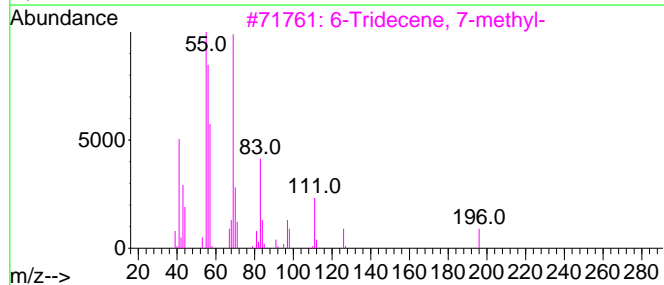
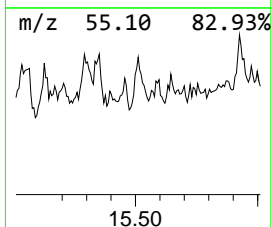
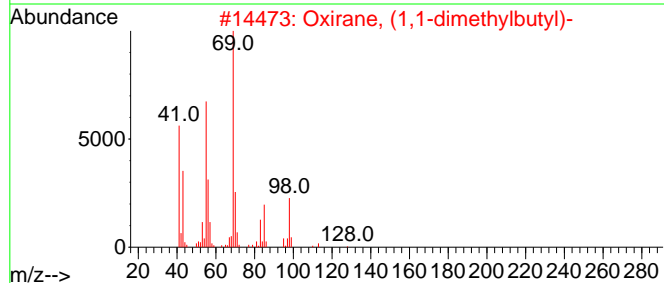
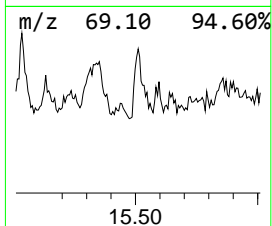
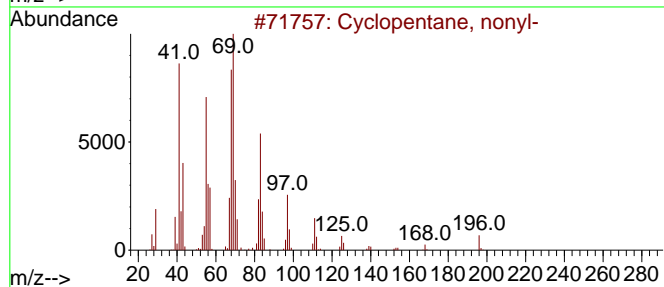
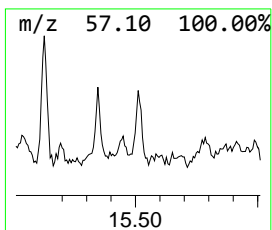
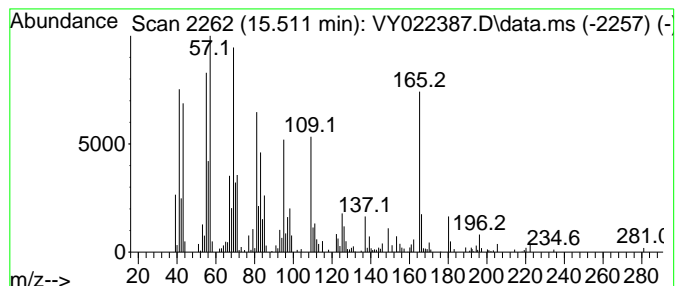
Quant Method : Z:\voasrv\HPCHEM1\MSVOA_Y\methods\82Y051525S.M
 Quant Title : SW846 8260

TIC Library : C:\Database\NIST20.L
 TIC Integration Parameters: LSCINT.P

 Peak Number 10 unknown15.511 Concentration Rank 5

R.T.	EstConc	Area	Relative to ISTD	R.T.
15.511	14.80 ug/l	142817	1,4-Dichlorobenzene-d4	13.353

Hit#	of 5	Tentative ID	MW	MolForm	CAS#	Qual
1		Cyclopentane, nonyl-	196	C14H28	002882-98-6	38
2		Oxirane, (1,1-dimethylbutyl)-	128	C8H16O	053907-76-9	38
3		6-Tridecene, 7-methyl-	196	C14H28	024949-42-6	30
4		6-Tetradecene, (Z)-	196	C14H28	041446-61-1	25
5		Cyclotetradecane	196	C14H28	000295-17-0	25



Data Path : Z:\voasrv\HPCHEM1\MSVOA_Y\Data\VY052225\
Data File : VY022387.D
Acq On : 22 May 2025 11:48
Operator : SY/MD
Sample : Q2102-01
Misc : 4.31g/5.0mL/MSVOA_Y/SOIL/B
ALS Vial : 9 Sample Multiplier: 1

Instrument :
MSVOA_Y
ClientSampleId :
LAW-25-0077

Quant Method : Z:\voasrv\HPCHEM1\MSVOA_Y\methods\82Y051525S.M
Quant Title : SW846 8260

TIC Library : C:\Database\NIST0.L
TIC Integration Parameters: LSCINT.P

TIC Top Hit name	RT	EstConc	Units	Response	--Internal Standard--			
					#	RT	Resp	Conc
unknown10.884	10.884	14.3	ug/l	255511	3	11.420	896239	50.0
unknown13.188	13.188	22.9	ug/l	220649	4	13.353	482422	50.0
Undecane	13.676	30.1	ug/l	290102	4	13.353	482422	50.0
11H-Dibenzo[b,e...	13.889	13.5	ug/l	130386	4	13.353	482422	50.0
Naphthalene, de...	14.182	13.7	ug/l	132077	4	13.353	482422	50.0
Dodecane	14.535	14.2	ug/l	136600	4	13.353	482422	50.0
Undecane, 2,6-d...	14.651	13.5	ug/l	130329	4	13.353	482422	50.0
unknown15.511	15.511	14.8	ug/l	142817	4	13.353	482422	50.0