

Data Path : Z:\voasrv\HPCHEM1\MSVOA_Y\Data\VY052725\
 Data File : VY022437.D
 Acq On : 27 May 2025 16:24
 Operator : SY/MD
 Sample : VIBLK
 Misc : 5.00g/5.0mL/MSVOA_Y/SOIL
 ALS Vial : 18 Sample Multiplier: 1

Instrument :
 MSVOA_Y
 ClientSampleId :
 VIBLK

Quant Time: May 28 15:27:57 2025
 Quant Method : Z:\voasrv\HPCHEM1\MSVOA_Y\methods\82Y052725S.M
 Quant Title : SW846 8260
 QLast Update : Wed May 28 10:34:06 2025
 Response via : Initial Calibration

Compound	R.T.	QIon	Response	Conc	Units	Dev(Min)

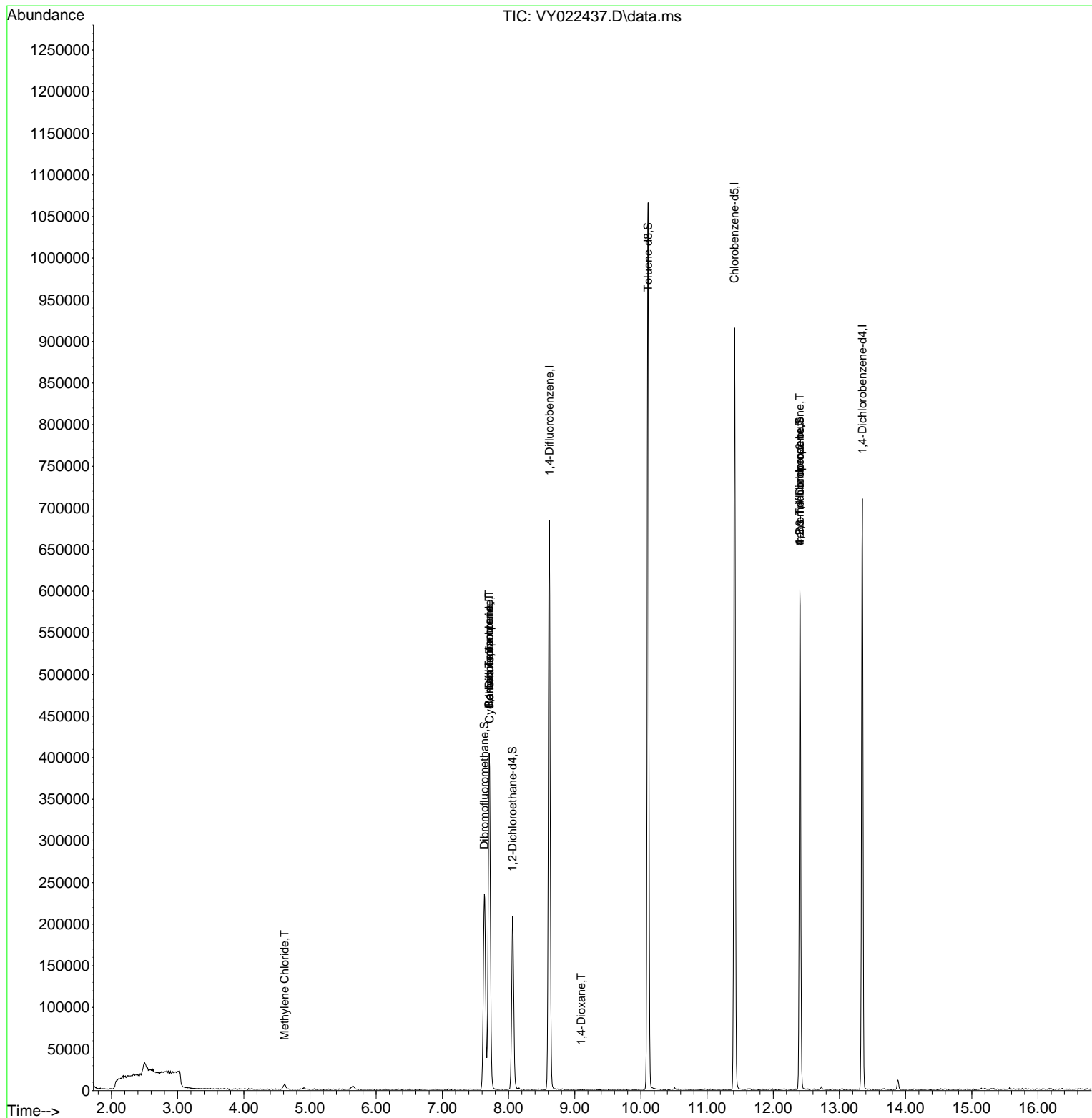
Internal Standards						
1) Pentafluorobenzene	7.707	168	309627	50.000	ug/l	0.00
34) 1,4-Difluorobenzene	8.615	114	566752	50.000	ug/l	0.00
63) Chlorobenzene-d5	11.414	117	451046	50.000	ug/l	0.00
72) 1,4-Dichlorobenzene-d4	13.346	152	164000	50.000	ug/l	0.00
System Monitoring Compounds						
33) 1,2-Dichloroethane-d4	8.061	65	154433	47.353	ug/l	0.00
Spiked Amount	50.000	Range	50 - 163	Recovery	=	94.700%
35) Dibromofluoromethane	7.634	113	162885	49.075	ug/l	0.00
Spiked Amount	50.000	Range	54 - 147	Recovery	=	98.160%
50) Toluene-d8	10.109	98	671877	49.657	ug/l	0.00
Spiked Amount	50.000	Range	58 - 134	Recovery	=	99.320%
62) 4-Bromofluorobenzene	12.401	95	168004	41.049	ug/l	0.00
Spiked Amount	50.000	Range	30 - 143	Recovery	=	82.100%
Target Compounds						
						Qvalue
20) Methylene Chloride	4.616	84	4008	1.059	ug/l	89
31) Cyclohexane	7.713	56	8623	1.375	ug/l #	29
36) 1,1-Dichloropropene	7.707	75	26788	5.086	ug/l #	51
38) Carbon Tetrachloride	7.707	117	31928	5.819	ug/l #	16
49) 1,4-Dioxane	9.097	88	49	2.157	ug/l #	37
76) 1,2,3-Trichloropropane	12.401	75	99290	60.442	ug/l #	100
81) trans-1,4-Dichloro-2-b...	12.401	75	99290	136.687	ug/l #	12

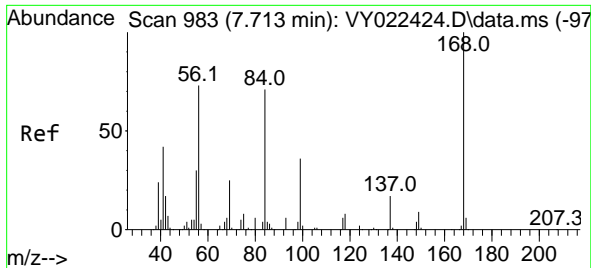
(#) = qualifier out of range (m) = manual integration (+) = signals summed

Data Path : Z:\voasrv\HPCHEM1\MSVOA_Y\Data\VY052725\
 Data File : VY022437.D
 Acq On : 27 May 2025 16:24
 Operator : SY/MD
 Sample : VIBLK
 Misc : 5.00g/5.0mL/MSVOA_Y/SOIL
 ALS Vial : 18 Sample Multiplier: 1

Instrument :
 MSVOA_Y
 ClientSampleId :
 VIBLK

Quant Time: May 28 15:27:57 2025
 Quant Method : Z:\voasrv\HPCHEM1\MSVOA_Y\methods\82Y052725S.M
 Quant Title : SW846 8260
 QLast Update : Wed May 28 10:34:06 2025
 Response via : Initial Calibration

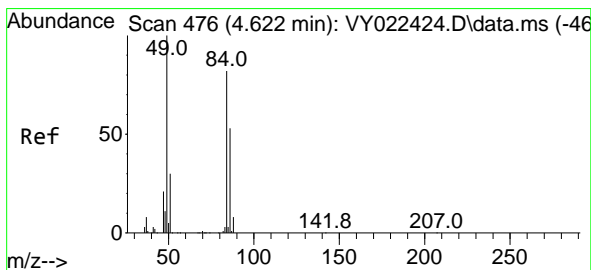
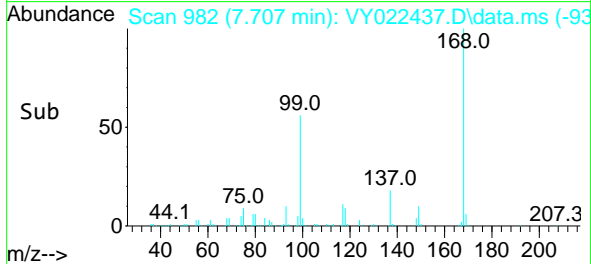
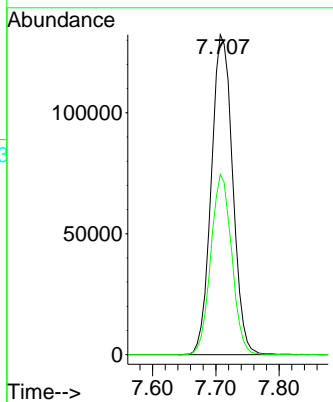
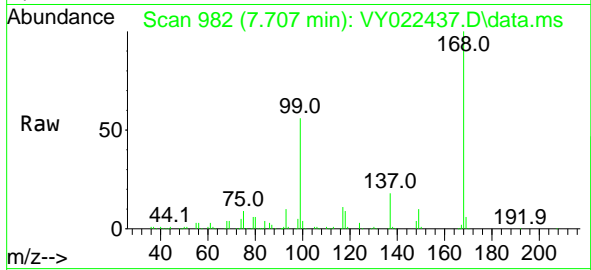




#1
 Pentafluorobenzene
 Concen: 50.000 ug/l
 RT: 7.707 min Scan# 91
 Delta R.T. -0.006 min
 Lab File: VY022437.D
 Acq: 27 May 2025 16:24

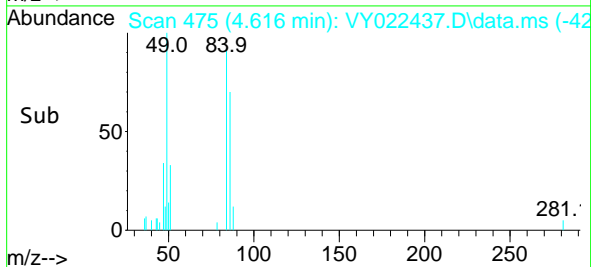
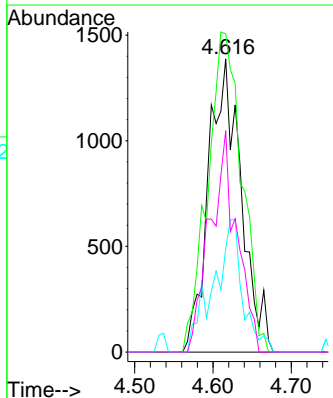
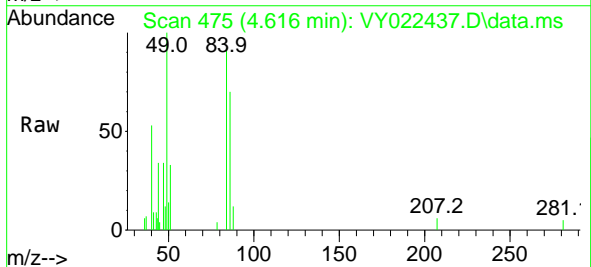
Instrument :
 MSVOA_Y
 ClientSampleId :
 VIBLK

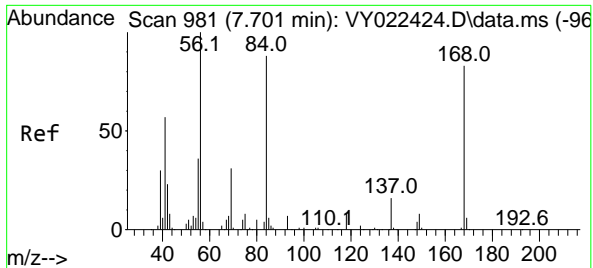
Tgt Ion:168 Resp: 309627
 Ion Ratio Lower Upper
 168 100
 99 56.3 44.7 67.1



#20
 Methylene Chloride
 Concen: 1.059 ug/l
 RT: 4.616 min Scan# 475
 Delta R.T. -0.006 min
 Lab File: VY022437.D
 Acq: 27 May 2025 16:24

Tgt Ion: 84 Resp: 4008
 Ion Ratio Lower Upper
 84 100
 49 108.5 97.8 146.8
 51 35.3 29.5 44.3
 86 75.5 51.8 77.6



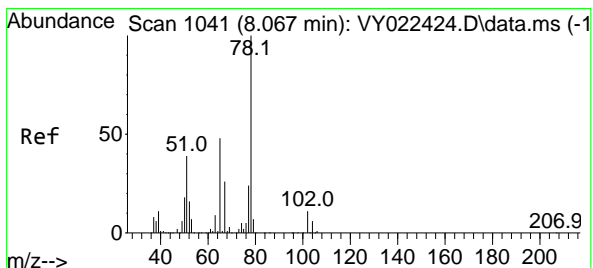
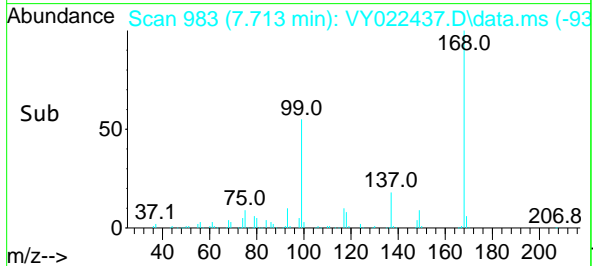
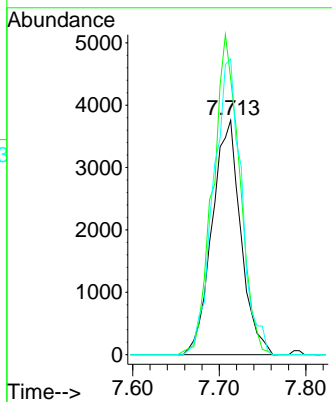
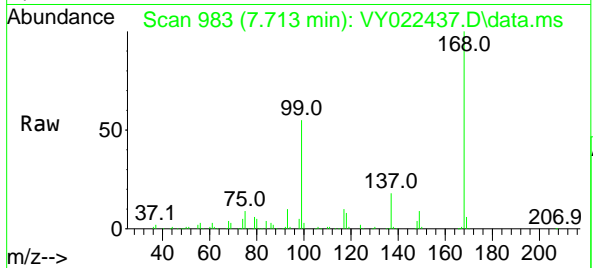


#31
 Cyclohexane
 Concen: 1.375 ug/l
 RT: 7.713 min Scan# 981
 Delta R.T. 0.012 min
 Lab File: VY022437.D
 Acq: 27 May 2025 16:24

Instrument : MSVOA_Y
 ClientSampleId : VIBLK

Tgt Ion: 56 Resp: 8623

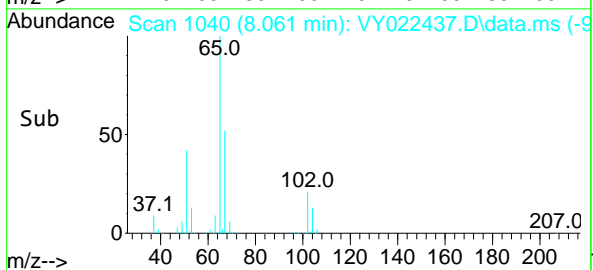
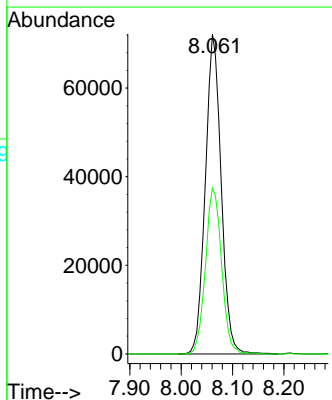
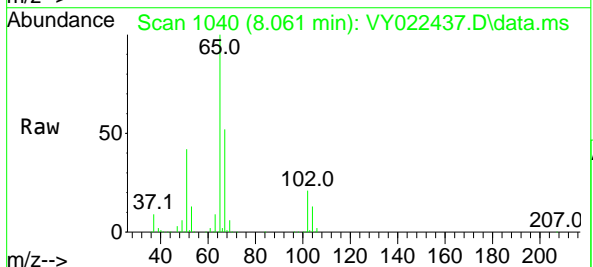
Ion	Ratio	Lower	Upper
56	100		
69	117.6	24.6	36.8#
84	126.1	70.4	105.6#

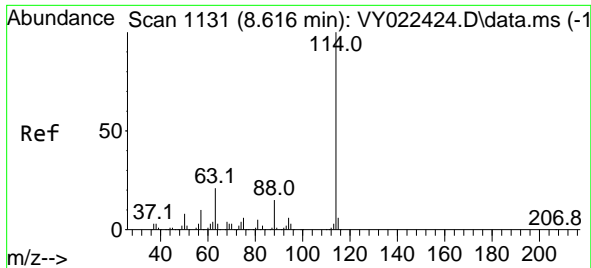


#33
 1,2-Dichloroethane-d4
 Concen: 47.353 ug/l
 RT: 8.061 min Scan# 1040
 Delta R.T. -0.006 min
 Lab File: VY022437.D
 Acq: 27 May 2025 16:24

Tgt Ion: 65 Resp: 154433

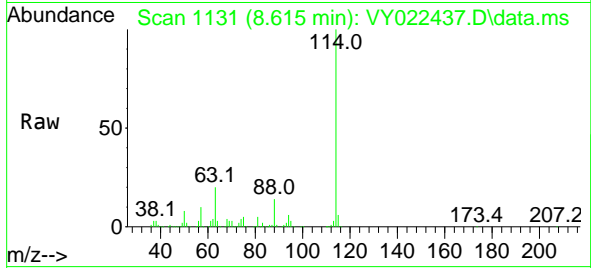
Ion	Ratio	Lower	Upper
65	100		
67	52.9	0.0	104.4



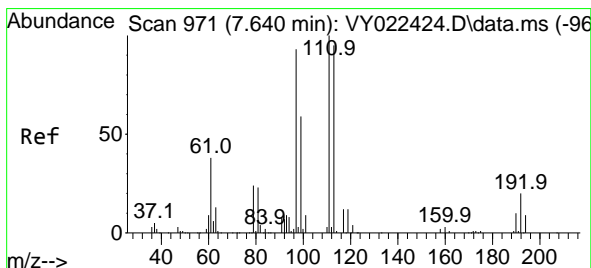
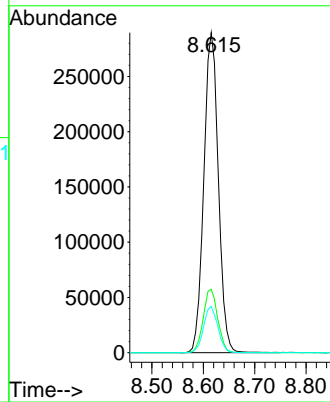
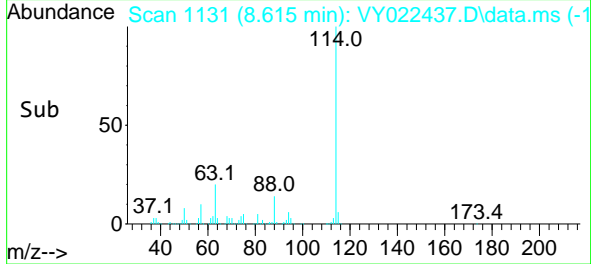


#34
 1,4-Difluorobenzene
 Concen: 50.000 ug/l
 RT: 8.615 min Scan# 1131
 Delta R.T. -0.000 min
 Lab File: VY022437.D
 Acq: 27 May 2025 16:24

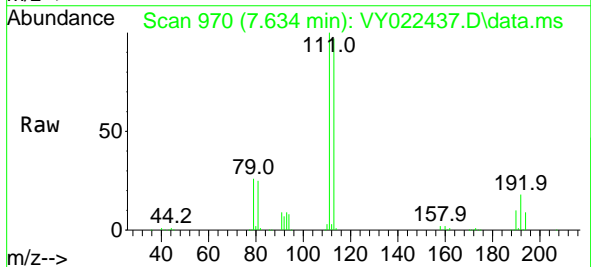
Instrument :
 MSVOA_Y
 ClientSampleId :
 VIBLK



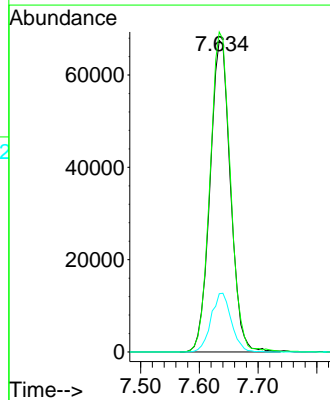
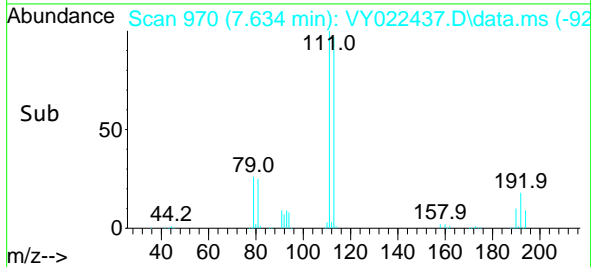
Tgt Ion:114 Resp: 566752
 Ion Ratio Lower Upper
 114 100
 63 19.8 0.0 42.6
 88 14.4 0.0 29.4

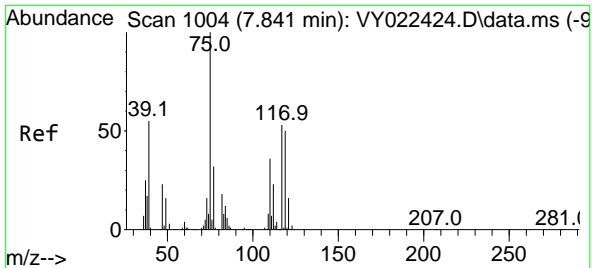


#35
 Dibromofluoromethane
 Concen: 49.075 ug/l
 RT: 7.634 min Scan# 970
 Delta R.T. -0.006 min
 Lab File: VY022437.D
 Acq: 27 May 2025 16:24



Tgt Ion:113 Resp: 162885
 Ion Ratio Lower Upper
 113 100
 111 102.7 82.4 123.6
 192 18.7 15.2 22.8

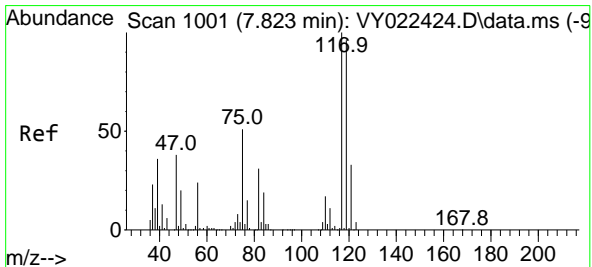
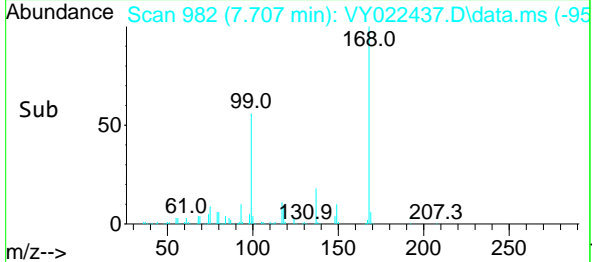
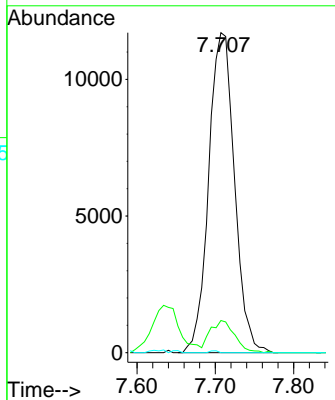
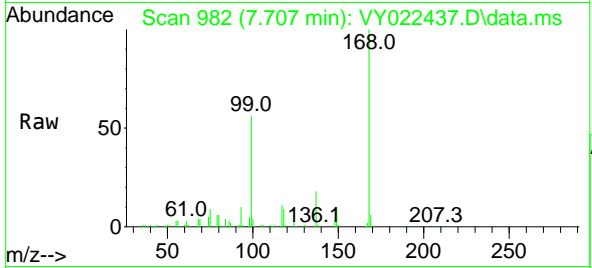




#36
 1,1-Dichloropropene
 Concen: 5.086 ug/l
 RT: 7.707 min Scan# 982
 Delta R.T. -0.134 min
 Lab File: VY022437.D
 Acq: 27 May 2025 16:24

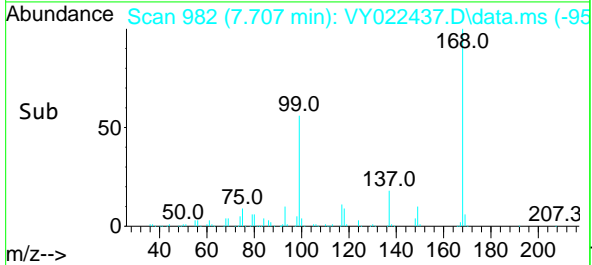
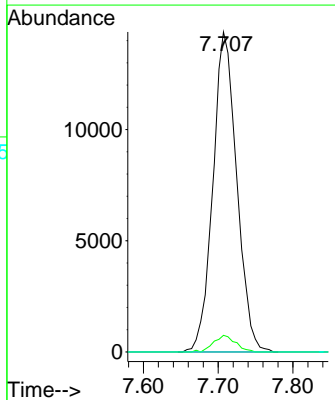
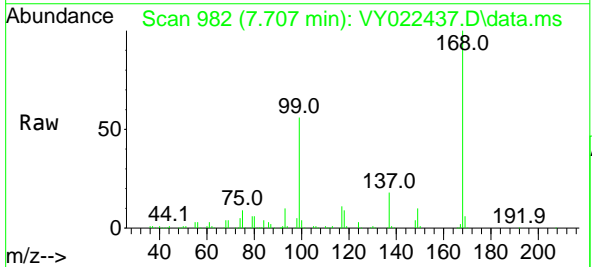
Instrument : MSVOA_Y
 ClientSampleId : VIBLK

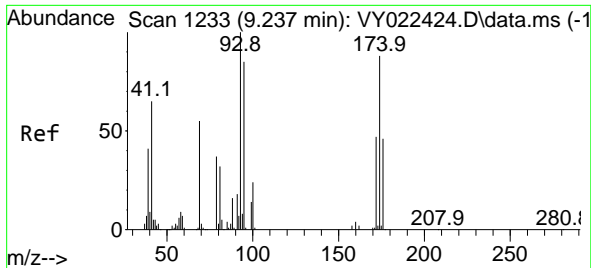
Tgt Ion	Resp	Lower	Upper
75	26788		
110	9.6	17.1	51.2#
77	0.2	25.1	37.7#



#38
 Carbon Tetrachloride
 Concen: 5.819 ug/l
 RT: 7.707 min Scan# 982
 Delta R.T. -0.116 min
 Lab File: VY022437.D
 Acq: 27 May 2025 16:24

Tgt Ion	Resp	Lower	Upper
117	31928		
119	5.2	76.3	114.5#
121	0.0	26.1	39.1#

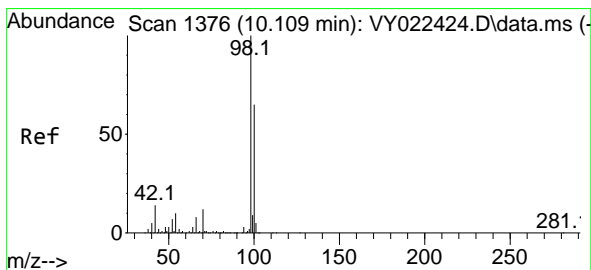
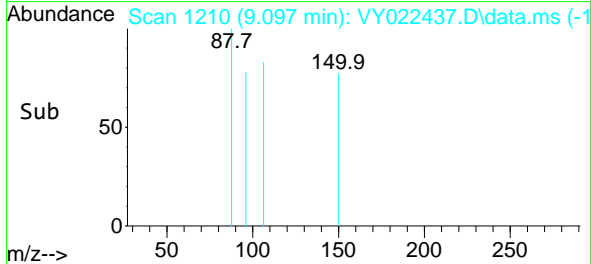
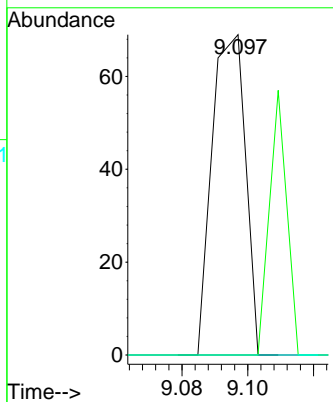
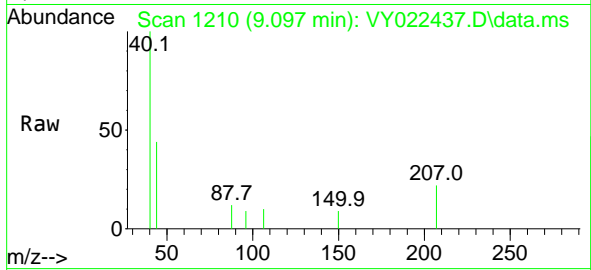




#49
 1,4-Dioxane
 Concen: 2.157 ug/l
 RT: 9.097 min Scan# 111
 Delta R.T. -0.140 min
 Lab File: VY022437.D
 Acq: 27 May 2025 16:24

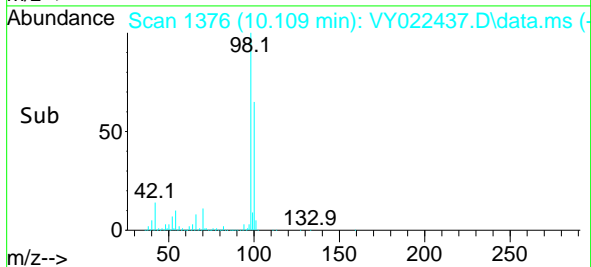
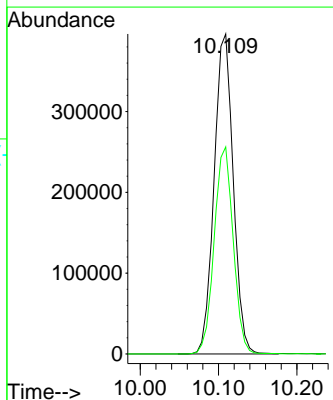
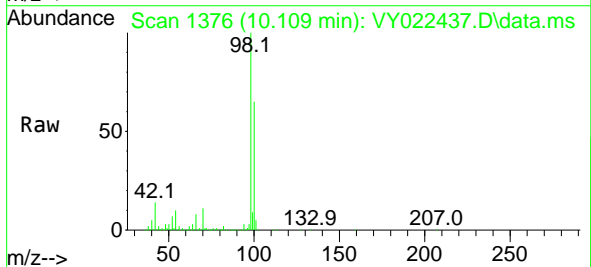
Instrument :
 MSVOA_Y
 ClientSampleId :
 VIBLK

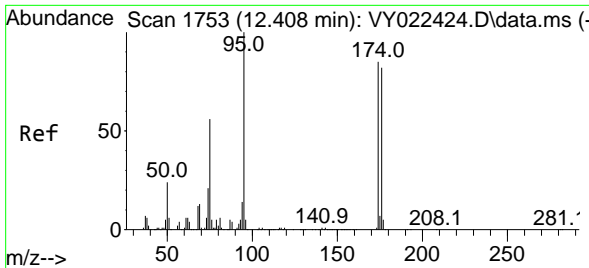
Tgt Ion	Resp	Lower	Upper
88	100		
43	42.9	26.9	40.3#
58	0.0	55.8	83.6#



#50
 Toluene-d8
 Concen: 49.657 ug/l
 RT: 10.109 min Scan# 1376
 Delta R.T. -0.000 min
 Lab File: VY022437.D
 Acq: 27 May 2025 16:24

Tgt Ion	Resp	Lower	Upper
98	100		
100	64.5	52.2	78.2

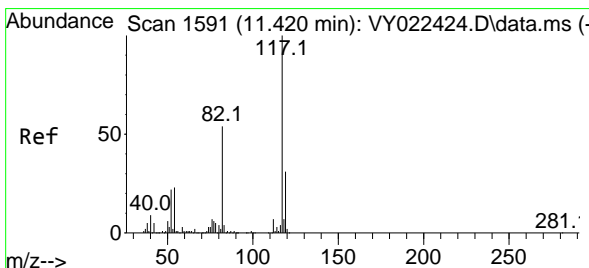
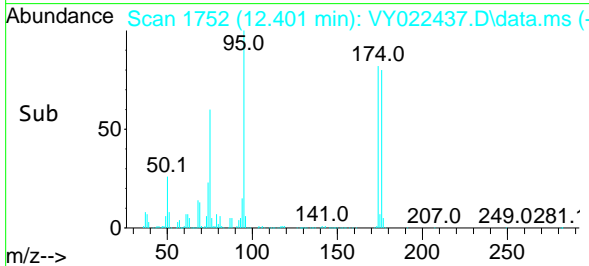
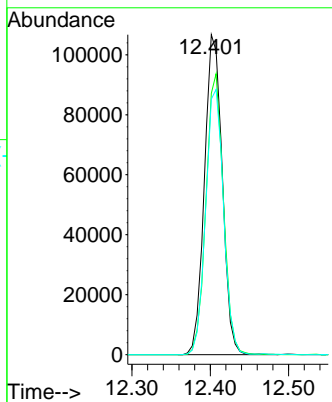
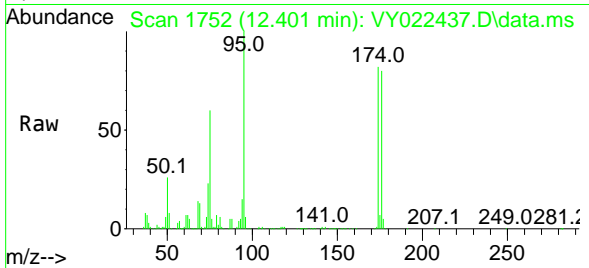




#62
 4-Bromofluorobenzene
 Concen: 41.049 ug/l
 RT: 12.401 min Scan# 11
 Delta R.T. -0.006 min
 Lab File: VY022437.D
 Acq: 27 May 2025 16:24

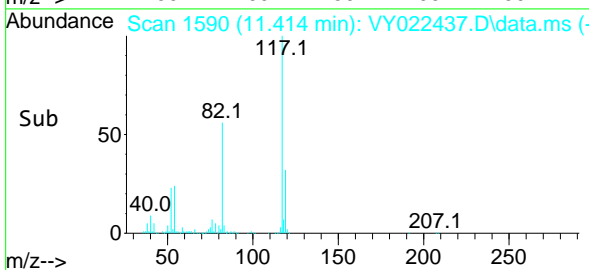
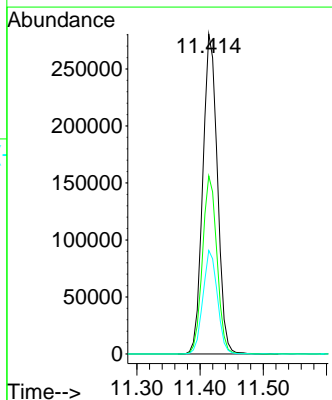
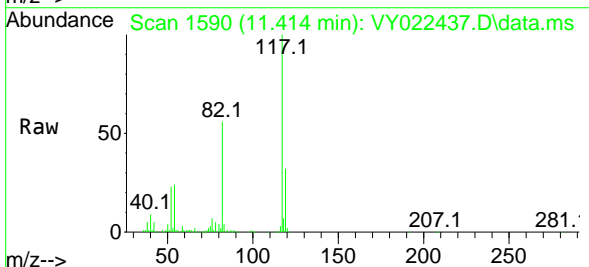
Instrument :
 MSVOA_Y
 ClientSampleId :
 VIBLK

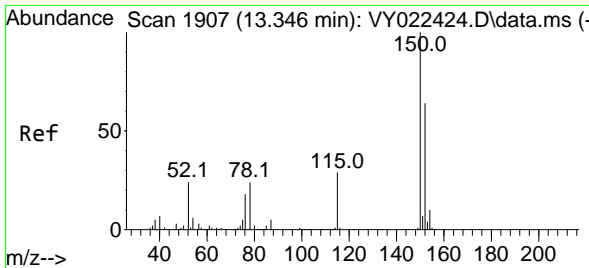
Tgt Ion	Resp	Lower	Upper
95	168004		
174	86.0	0.0	171.6
176	83.5	0.0	164.6



#63
 Chlorobenzene-d5
 Concen: 50.000 ug/l
 RT: 11.414 min Scan# 1590
 Delta R.T. -0.006 min
 Lab File: VY022437.D
 Acq: 27 May 2025 16:24

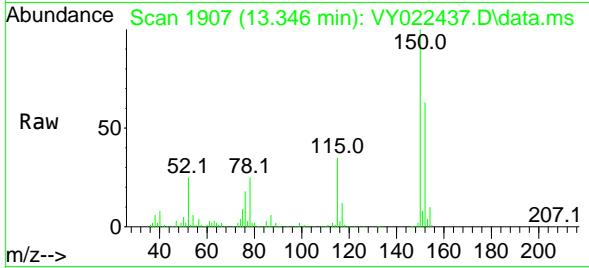
Tgt Ion	Resp	Lower	Upper
117	451046		
82	55.6	43.3	64.9
119	32.4	24.5	36.7



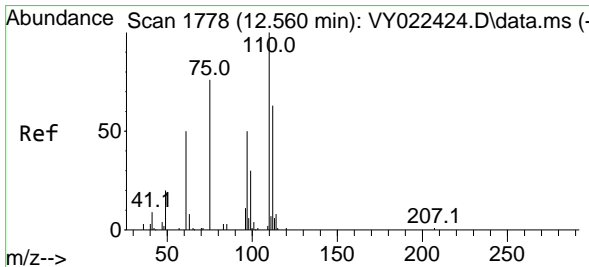
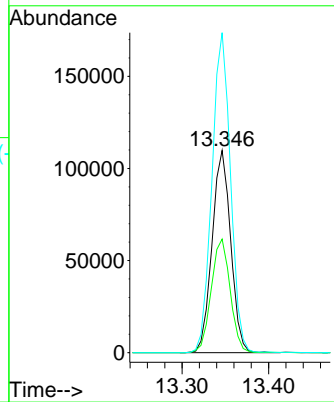
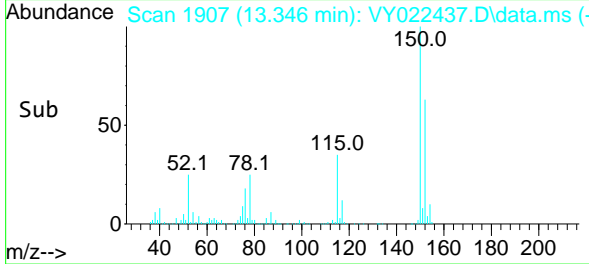


#72
 1,4-Dichlorobenzene-d4
 Concen: 50.000 ug/l
 RT: 13.346 min Scan# 15
 Delta R.T. -0.000 min
 Lab File: VY022437.D
 Acq: 27 May 2025 16:24

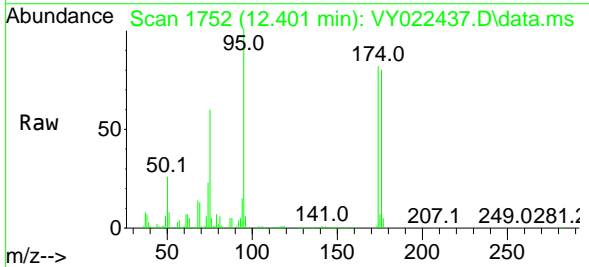
Instrument : MSVOA_Y
 ClientSampleId : VIBLK



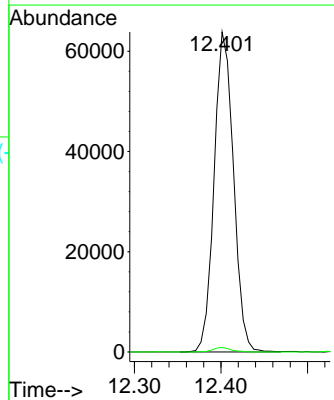
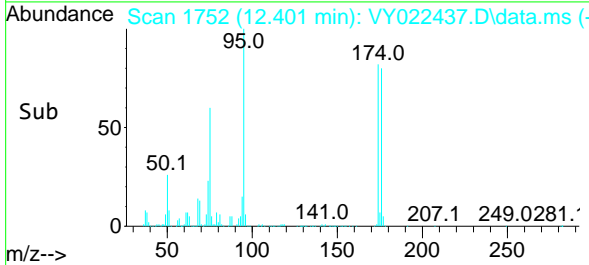
Tgt Ion:152 Resp: 164000
 Ion Ratio Lower Upper
 152 100
 115 57.2 28.4 85.3
 150 157.6 0.0 345.8

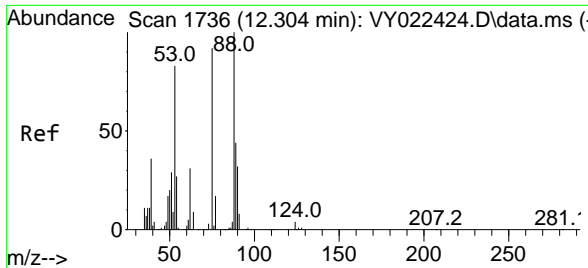


#76
 1,2,3-Trichloropropane
 Concen: 60.442 ug/l
 RT: 12.401 min Scan# 1752
 Delta R.T. -0.159 min
 Lab File: VY022437.D
 Acq: 27 May 2025 16:24



Tgt Ion: 75 Resp: 99290
 Ion Ratio Lower Upper
 75 100
 77 1.3 0.0 0.0#





#81
 trans-1,4-Dichloro-2-butene
 Concen: 136.687 ug/l
 RT: 12.401 min Scan# 11
 Delta R.T. 0.097 min
 Lab File: VY022437.D
 Acq: 27 May 2025 16:24

Instrument :
 MSVOA_Y
 ClientSampleId :
 VIBLK

Tgt Ion: 75 Resp: 99290
 Ion Ratio Lower Upper
 75 100
 53 0.0 75.1 112.7#
 89 0.0 37.4 56.0#

