

Data Path : Z:\voasrv\HPCHEM1\MSVOA_Y\Data\VY052925\
 Data File : VY022468.D
 Acq On : 29 May 2025 15:33
 Operator : SY/MD
 Sample : Q2150-09
 Misc : 7.85g/5.0mL/MSVOA_Y/SOIL/A
 ALS Vial : 19 Sample Multiplier: 1

Instrument :
 MSVOA_Y
 ClientSampleId :
 TP-54

Quant Time: May 30 05:36:11 2025
 Quant Method : Z:\voasrv\HPCHEM1\MSVOA_Y\methods\82Y052725S.M
 Quant Title : SW846 8260
 QLast Update : Wed May 28 10:34:06 2025
 Response via : Initial Calibration

Compound	R.T.	QIon	Response	Conc	Units	Dev(Min)

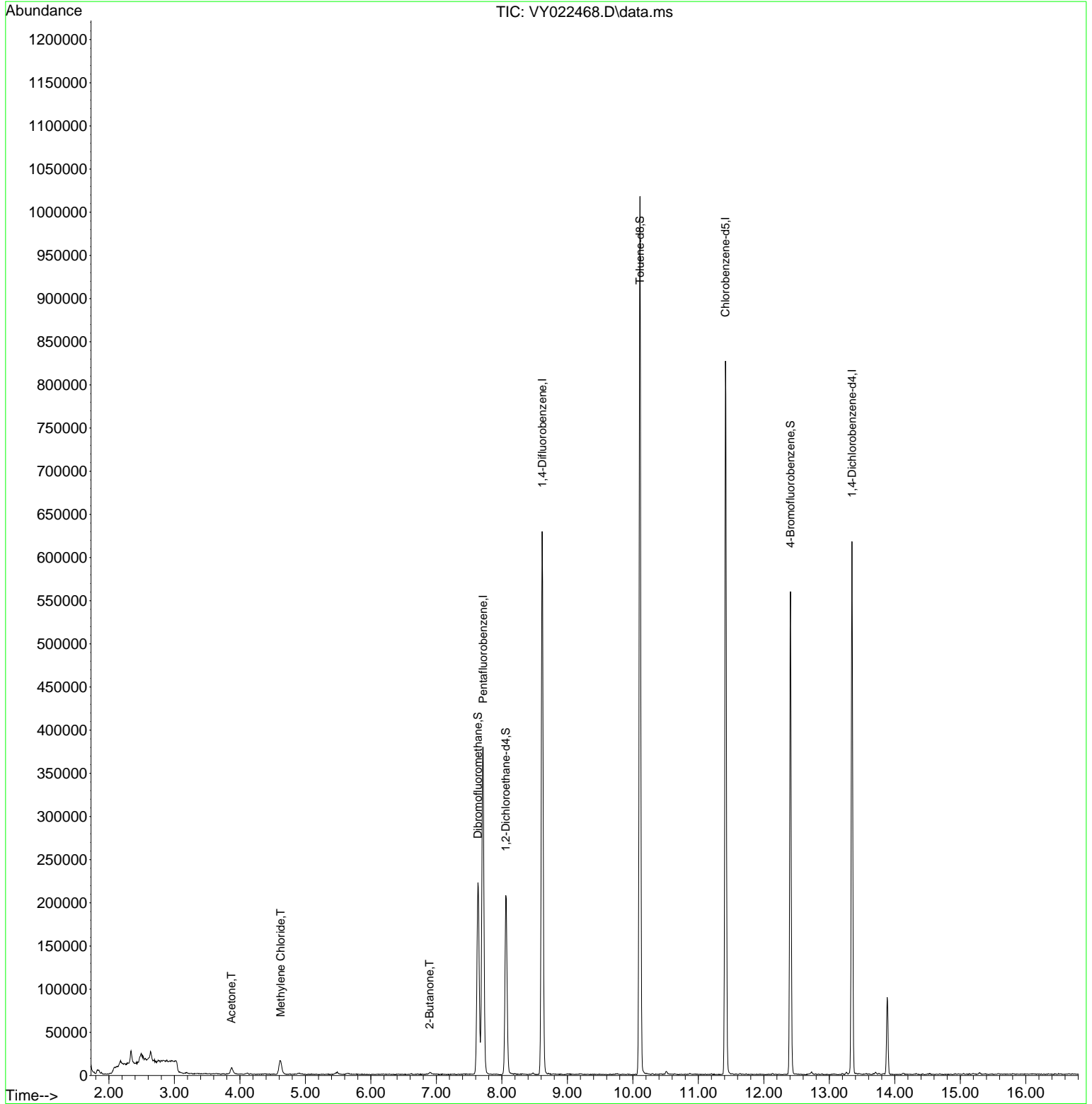
Internal Standards						
1) Pentafluorobenzene	7.713	168	283443	50.000	ug/l	0.00
34) 1,4-Difluorobenzene	8.616	114	517546	50.000	ug/l	0.00
63) Chlorobenzene-d5	11.414	117	406523	50.000	ug/l	0.00
72) 1,4-Dichlorobenzene-d4	13.347	152	140553	50.000	ug/l	0.00
System Monitoring Compounds						
33) 1,2-Dichloroethane-d4	8.061	65	156979	52.580	ug/l	0.00
Spiked Amount	50.000	Range	50 - 163	Recovery	=	105.160%
35) Dibromofluoromethane	7.634	113	153619	50.684	ug/l	0.00
Spiked Amount	50.000	Range	54 - 147	Recovery	=	101.360%
50) Toluene-d8	10.109	98	623100	50.430	ug/l	0.00
Spiked Amount	50.000	Range	58 - 134	Recovery	=	100.860%
62) 4-Bromofluorobenzene	12.408	95	148270	39.672	ug/l	0.00
Spiked Amount	50.000	Range	30 - 143	Recovery	=	79.340%
Target Compounds						
						Qvalue
16) Acetone	3.873	43	14067	28.673	ug/l	93
20) Methylene Chloride	4.623	84	11504	3.321	ug/l	97
25) 2-Butanone	6.897	43	3275	4.008	ug/l	99

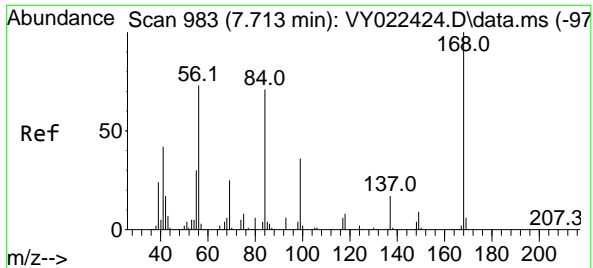
(#) = qualifier out of range (m) = manual integration (+) = signals summed

Data Path : Z:\voasrv\HPCHEM1\MSVOA_Y\Data\VY052925\
 Data File : VY022468.D
 Acq On : 29 May 2025 15:33
 Operator : SY/MD
 Sample : Q2150-09
 Misc : 7.85g/5.0mL/MSVOA_Y/SOIL/A
 ALS Vial : 19 Sample Multiplier: 1

Instrument :
 MSVOA_Y
 ClientSampleId :
 TP-54

Quant Time: May 30 05:36:11 2025
 Quant Method : Z:\voasrv\HPCHEM1\MSVOA_Y\methods\82Y052725S.M
 Quant Title : SW846 8260
 QLast Update : Wed May 28 10:34:06 2025
 Response via : Initial Calibration

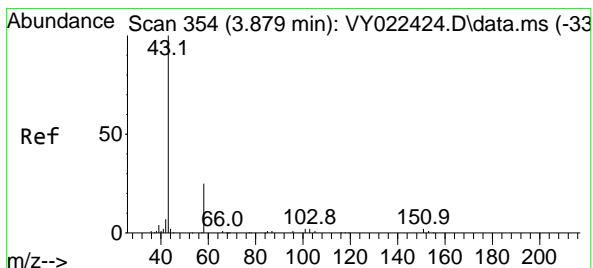
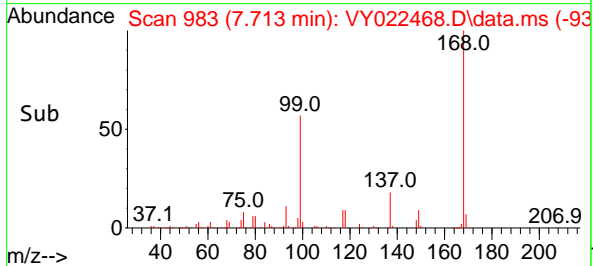
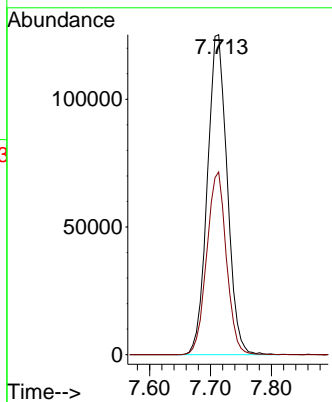
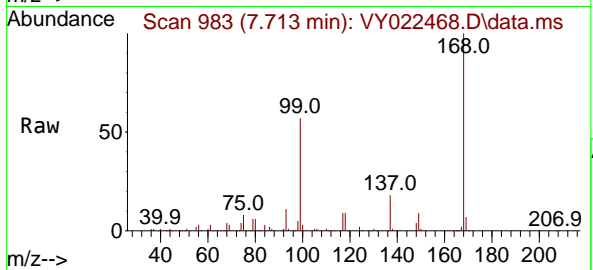




#1
 Pentafluorobenzene
 Concen: 50.000 ug/l
 RT: 7.713 min Scan# 91
 Delta R.T. 0.000 min
 Lab File: VY022468.D
 Acq: 29 May 2025 15:33

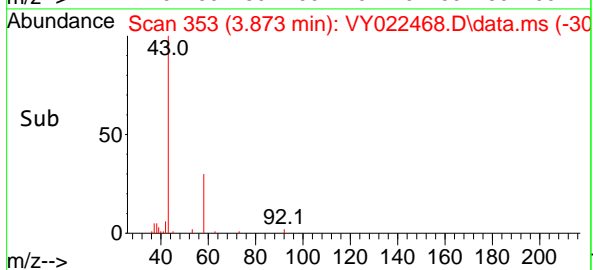
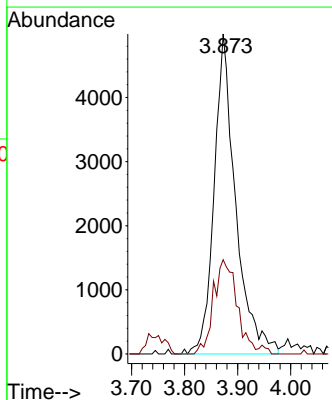
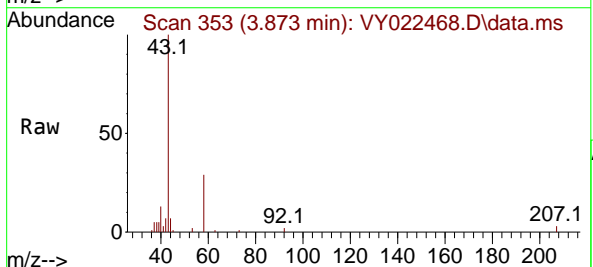
Instrument :
 MSVOA_Y
 ClientSampleId :
 TP-54

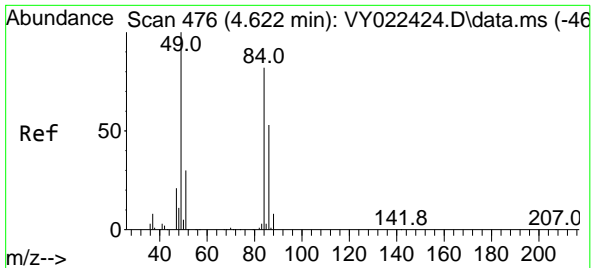
Tgt Ion:168 Resp: 283443
 Ion Ratio Lower Upper
 168 100
 99 57.1 44.7 67.1



#16
 Acetone
 Concen: 28.673 ug/l
 RT: 3.873 min Scan# 353
 Delta R.T. -0.006 min
 Lab File: VY022468.D
 Acq: 29 May 2025 15:33

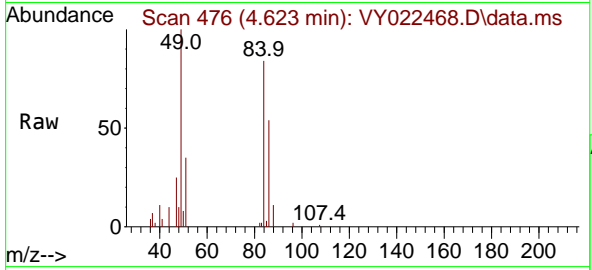
Tgt Ion: 43 Resp: 14067
 Ion Ratio Lower Upper
 43 100
 58 29.4 20.6 30.8





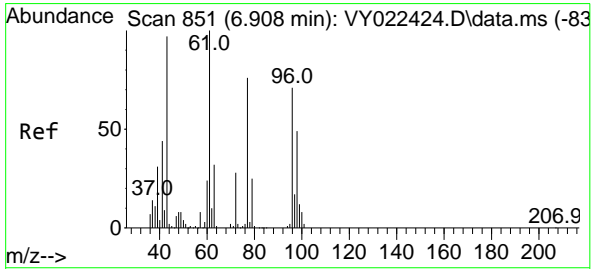
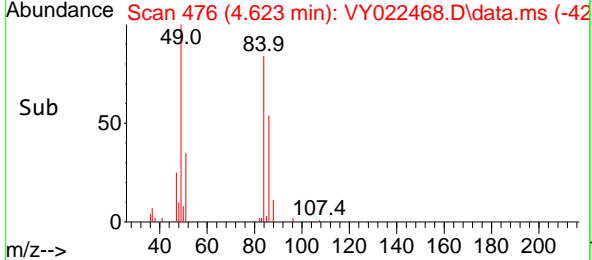
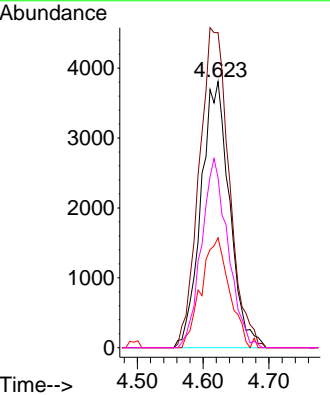
#20
 Methylene Chloride
 Concen: 3.321 ug/l
 RT: 4.623 min Scan# 41
 Delta R.T. 0.000 min
 Lab File: VY022468.D
 Acq: 29 May 2025 15:33

Instrument : MSVOA_Y
 ClientSampleId : TP-54

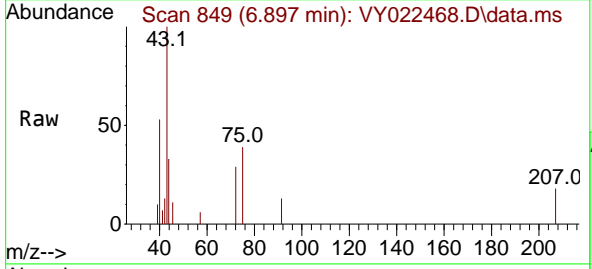


Tgt Ion: 84 Resp: 11504

Ion	Ratio	Lower	Upper
84	100		
49	118.4	97.8	146.8
51	41.3	29.5	44.3
86	63.9	51.8	77.6

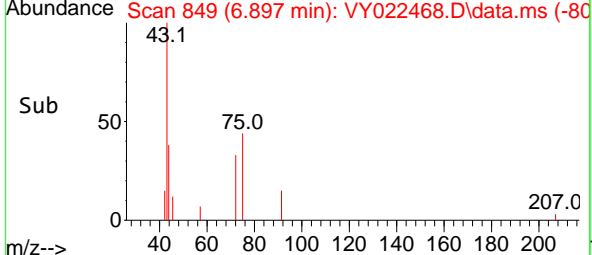
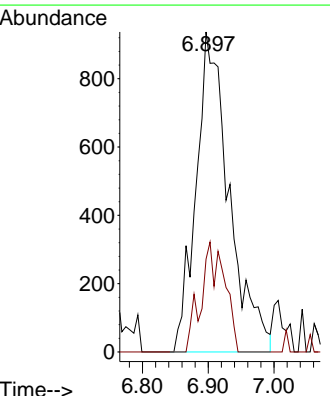


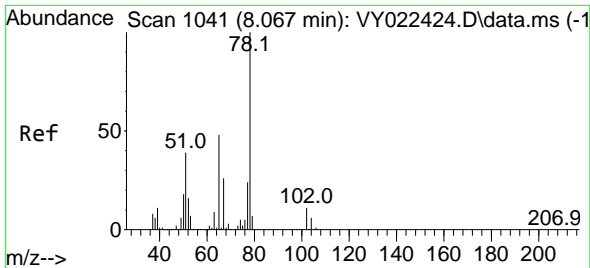
#25
 2-Butanone
 Concen: 4.008 ug/l
 RT: 6.897 min Scan# 849
 Delta R.T. -0.012 min
 Lab File: VY022468.D
 Acq: 29 May 2025 15:33



Tgt Ion: 43 Resp: 3275

Ion	Ratio	Lower	Upper
43	100		
72	29.0	22.8	34.2

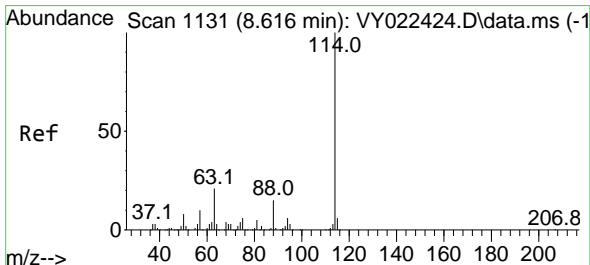
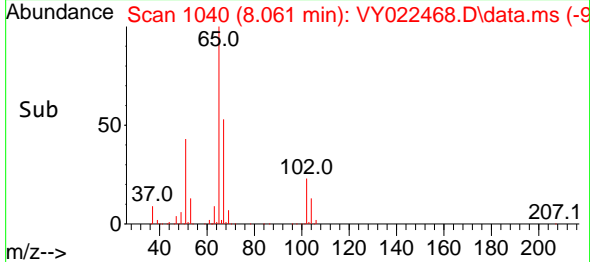
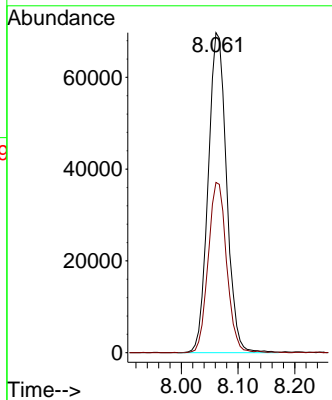
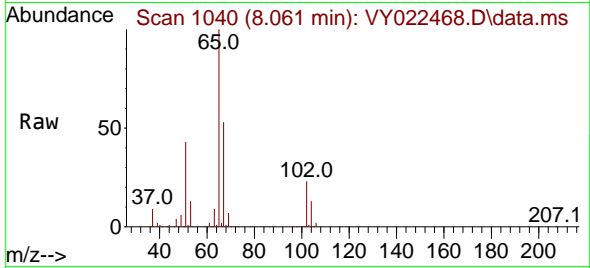




#33
 1,2-Dichloroethane-d4
 Concen: 52.580 ug/l
 RT: 8.061 min Scan# 1040
 Delta R.T. -0.006 min
 Lab File: VY022468.D
 Acq: 29 May 2025 15:33

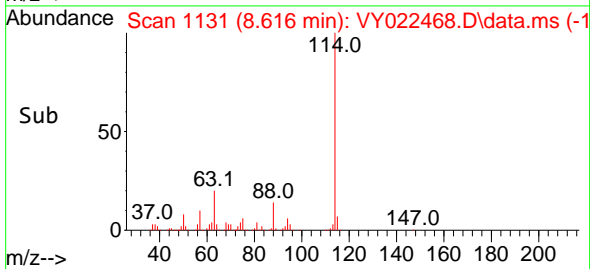
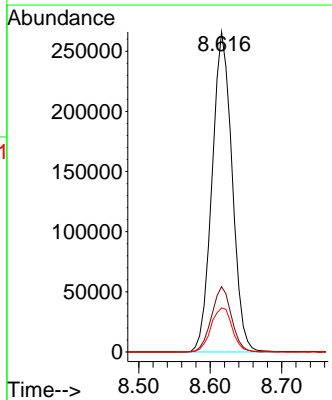
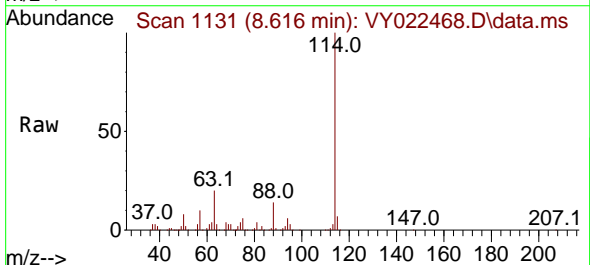
Instrument : MSVOA_Y
 ClientSampleId : TP-54

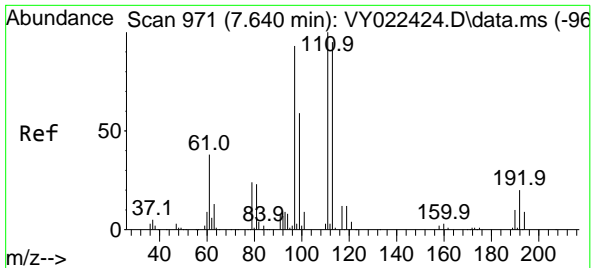
Tgt Ion: 65 Resp: 156979
 Ion Ratio Lower Upper
 65 100
 67 53.5 0.0 104.4



#34
 1,4-Difluorobenzene
 Concen: 50.000 ug/l
 RT: 8.616 min Scan# 1131
 Delta R.T. 0.000 min
 Lab File: VY022468.D
 Acq: 29 May 2025 15:33

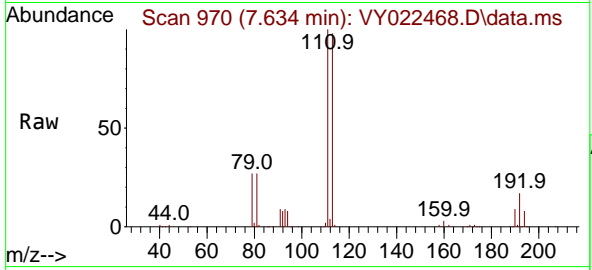
Tgt Ion:114 Resp: 517546
 Ion Ratio Lower Upper
 114 100
 63 20.4 0.0 42.6
 88 13.8 0.0 29.4



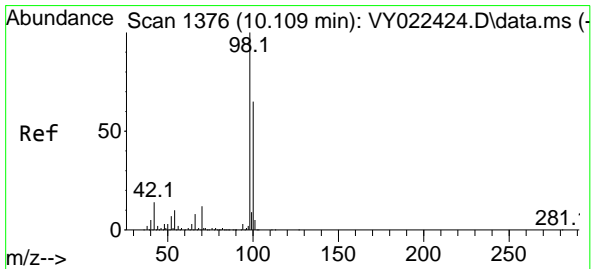
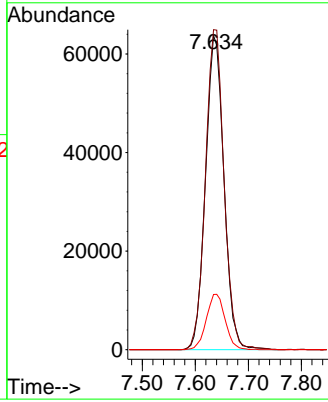
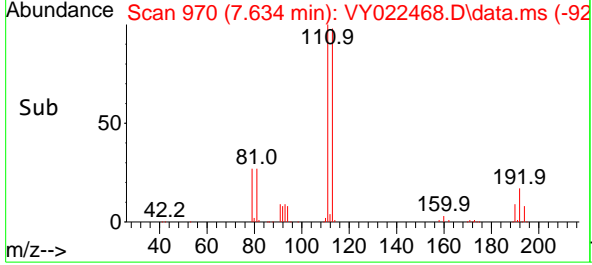


#35
 Dibromofluoromethane
 Concen: 50.684 ug/l
 RT: 7.634 min Scan# 91
 Delta R.T. -0.006 min
 Lab File: VY022468.D
 Acq: 29 May 2025 15:33

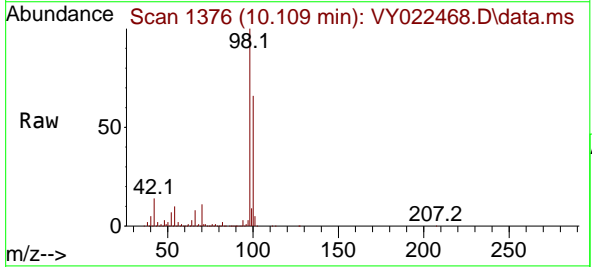
Instrument : MSVOA_Y
 ClientSampleId : TP-54



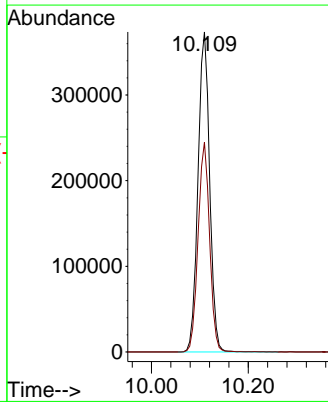
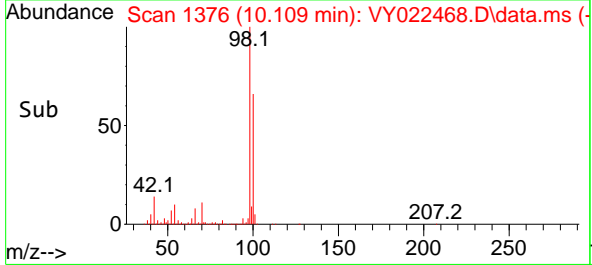
Tgt Ion:113 Resp: 153619
 Ion Ratio Lower Upper
 113 100
 111 103.0 82.4 123.6
 192 18.0 15.2 22.8

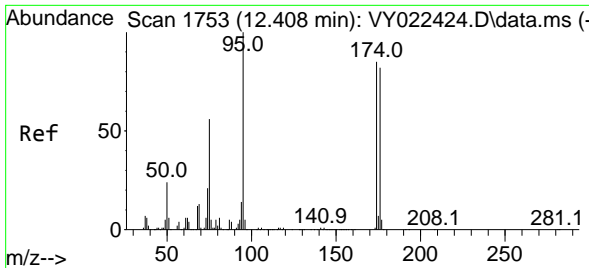


#50
 Toluene-d8
 Concen: 50.430 ug/l
 RT: 10.109 min Scan# 1376
 Delta R.T. 0.000 min
 Lab File: VY022468.D
 Acq: 29 May 2025 15:33



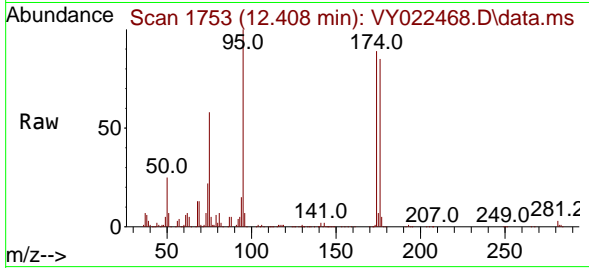
Tgt Ion: 98 Resp: 623100
 Ion Ratio Lower Upper
 98 100
 100 64.8 52.2 78.2





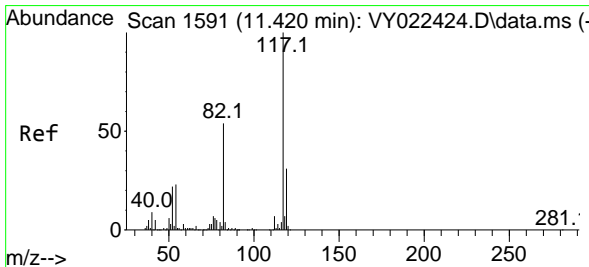
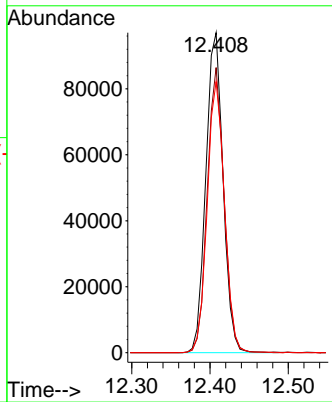
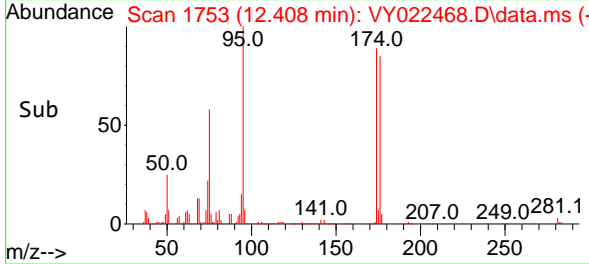
#62
 4-Bromofluorobenzene
 Concen: 39.672 ug/l
 RT: 12.408 min Scan# 1753
 Delta R.T. 0.000 min
 Lab File: VY022468.D
 Acq: 29 May 2025 15:33

Instrument : MSVOA_Y
 ClientSampleId : TP-54

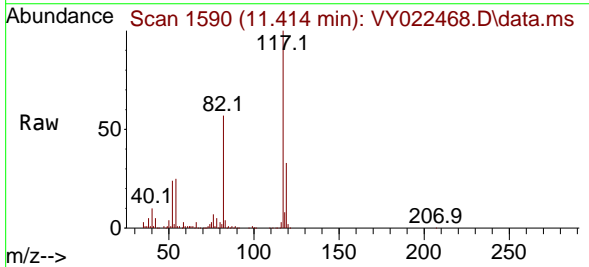


Tgt Ion: 95 Resp: 148270

Ion	Ratio	Lower	Upper
95	100		
174	86.9	0.0	171.6
176	84.8	0.0	164.6

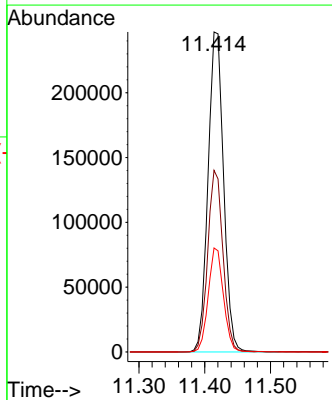
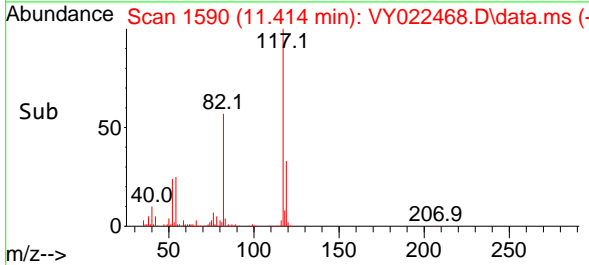


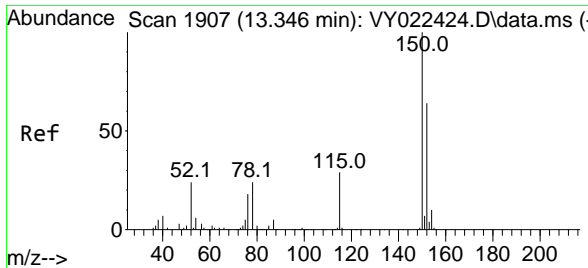
#63
 Chlorobenzene-d5
 Concen: 50.000 ug/l
 RT: 11.414 min Scan# 1590
 Delta R.T. -0.006 min
 Lab File: VY022468.D
 Acq: 29 May 2025 15:33



Tgt Ion: 117 Resp: 406523

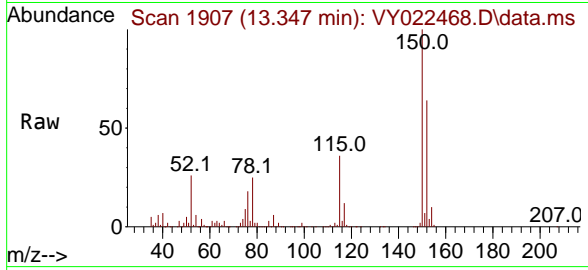
Ion	Ratio	Lower	Upper
117	100		
82	56.8	43.3	64.9
119	32.5	24.5	36.7





#72
 1,4-Dichlorobenzene-d4
 Concen: 50.000 ug/l
 RT: 13.347 min Scan# 1907
 Delta R.T. 0.000 min
 Lab File: VY022468.D
 Acq: 29 May 2025 15:33

Instrument :
 MSVOA_Y
 ClientSampleId :
 TP-54



Tgt Ion:152 Resp: 140553

Ion	Ratio	Lower	Upper
152	100		
115	55.7	28.4	85.3
150	153.6	0.0	345.8

