

Data Path : Z:\voasrv\HPCHEM1\MSVOA_Y\Data\VY060325\
 Data File : VY022525.D
 Acq On : 03 Jun 2025 16:11
 Operator : SY/MD
 Sample : Q2161-02
 Misc : 5.80g/5.0mL/MSVOA_Y/SOIL/B
 ALS Vial : 16 Sample Multiplier: 1

Instrument :
 MSVOA_Y
 ClientSampleId :
 B28-SOIL-SAMPLE

Quant Time: Jun 04 04:14:23 2025
 Quant Method : Z:\voasrv\HPCHEM1\MSVOA_Y\methods\82Y060225S.M
 Quant Title : SW846 8260
 QLast Update : Tue Jun 03 03:22:04 2025
 Response via : Initial Calibration

Compound	R.T.	QIon	Response	Conc	Units	Dev(Min)

Internal Standards						
1) Pentafluorobenzene	7.701	168	724	50.000	ug/l	#-0.01
34) 1,4-Difluorobenzene	8.622	114	1254	50.000	ug/l	0.00
63) Chlorobenzene-d5	11.414	117	472	50.000	ug/l	# 0.00
72) 1,4-Dichlorobenzene-d4	13.353	152	29	50.000	ug/l	# 0.00
System Monitoring Compounds						
33) 1,2-Dichloroethane-d4	8.061	65	376	46.434	ug/l	0.00
Spiked Amount	50.000	Range 50 - 163	Recovery	=	92.860%	
35) Dibromofluoromethane	7.652	113	122	16.300	ug/l	0.01
Spiked Amount	50.000	Range 54 - 147	Recovery	=	32.600%#	
50) Toluene-d8	10.103	98	997	32.966	ug/l	0.00
Spiked Amount	50.000	Range 58 - 134	Recovery	=	65.940%	
62) 4-Bromofluorobenzene	12.395	95	278	30.851	ug/l	-0.01
Spiked Amount	50.000	Range 30 - 143	Recovery	=	61.700%	
Target Compounds						
						Qvalue
3) Chloromethane	2.111	50	49	2.559	ug/l #	42
6) Chloroethane	2.751	64	25	1.640	ug/l #	45
8) Diethyl Ether	3.427	74	21	4.945	ug/l #	4
10) Methyl Iodide	4.037	142	27	3.141	ug/l #	38
11) Tert butyl alcohol	4.866	59	30	51.871	ug/l #	73
12) 1,1-Dichloroethene	3.830	96	77	10.142	ug/l #	1
13) Acrolein	3.647	56	44	61.045	ug/l #	14
14) Allyl chloride	4.391	41	19	1.594	ug/l #	1
15) Acrylonitrile	5.171	53	20	11.119	ug/l #	17
16) Acetone	3.854	43	57	34.661	ug/l #	45
17) Carbon Disulfide	4.171	76	29	1.193	ug/l #	1
18) Methyl Acetate	4.372	43	46	9.446	ug/l #	51
19) Methyl tert-butyl Ether	5.116	73	80	3.741	ug/l #	54
21) trans-1,2-Dichloroethene	5.238	96	39	4.590	ug/l #	1
23) Vinyl Acetate	5.982	43	35	2.229	ug/l #	72
25) 2-Butanone	6.902	43	20	8.431	ug/l #	46
26) 2,2-Dichloropropane	6.982	77	19	1.376	ug/l #	53
27) cis-1,2-Dichloroethene	6.829	96	52	5.294	ug/l #	1
28) Bromochloromethane	7.177	49	44	6.458	ug/l #	17
29) Tetrahydrofuran	7.244	42	19	12.419	ug/l #	31
30) Chloroform	7.317	83	20	1.292	ug/l #	16
31) Cyclohexane	7.658	56	49	3.149	ug/l #	14
36) 1,1-Dichloropropene	7.933	75	55	4.528	ug/l #	58
37) Ethyl Acetate	7.024	43	93	17.167	ug/l #	69
39) Methylcyclohexane	9.109	83	67	4.104	ug/l #	19
40) Benzene	8.073	78	354	9.866	ug/l	95
41) Methacrylonitrile	7.311	41	33	10.429	ug/l #	20
42) 1,2-Dichloroethane	8.152	62	20	2.041	ug/l #	74
43) Isopropyl Acetate	8.171	43	120	10.256	ug/l #	61
46) Dibromomethane	9.176	93	59	12.368	ug/l #	7
47) Bromodichloromethane	9.268	83	27	2.232	ug/l #	26
48) Methyl methacrylate	9.231	41	24	4.371	ug/l #	18
49) 1,4-Dioxane	9.414	88	26	460.040	ug/l #	19
51) 4-Methyl-2-Pentanone	10.036	43	40	6.857	ug/l #	37
52) Toluene	10.170	92	170	7.539	ug/l #	42
53) t-1,3-Dichloropropene	10.365	75	40	3.529	ug/l #	42

Data Path : Z:\voasrv\HPCHEM1\MSVOA_Y\Data\VY060325\
 Data File : VY022525.D
 Acq On : 03 Jun 2025 16:11
 Operator : SY/MD
 Sample : Q2161-02
 Misc : 5.80g/5.0mL/MSVOA_Y/SOIL/B
 ALS Vial : 16 Sample Multiplier: 1

Instrument :
 MSVOA_Y
 ClientSampleId :
 B28-SOIL-SAMPLE

Quant Time: Jun 04 04:14:23 2025
 Quant Method : Z:\voasrv\HPCHEM1\MSVOA_Y\methods\82Y060225S.M
 Quant Title : SW846 8260
 QLast Update : Tue Jun 03 03:22:04 2025
 Response via : Initial Calibration

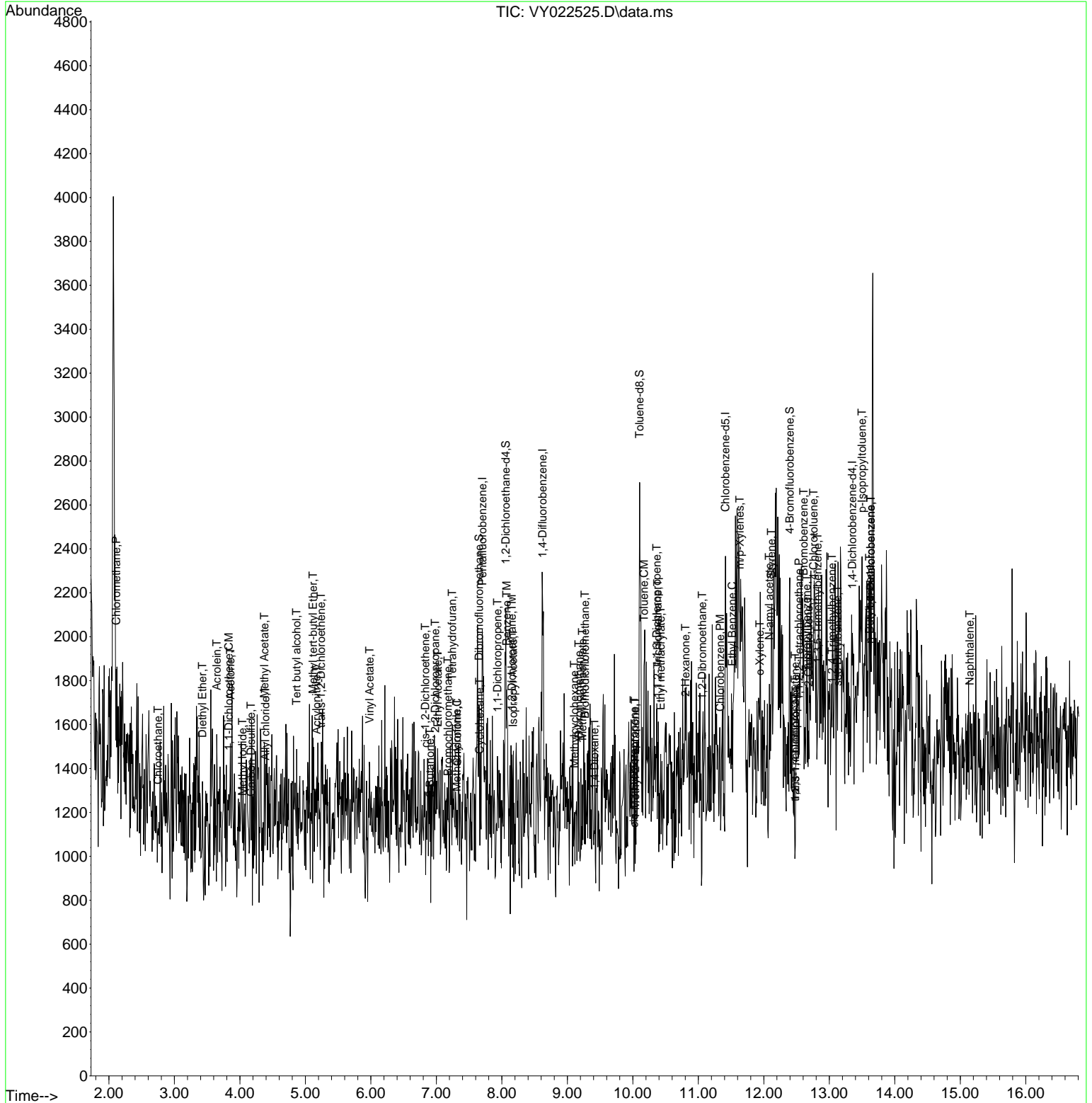
Compound	R.T.	QIon	Response	Conc	Units	Dev(Min)
54) cis-1,3-Dichloropropene	10.018	75	20	1.516	ug/l #	32
55) 1,1,2-Trichloroethane	10.377	97	80	13.151	ug/l #	15
56) Ethyl methacrylate	10.426	69	38	4.322	ug/l #	1
59) 2-Hexanone	10.804	43	182	46.652	ug/l #	24
61) 1,2-Dibromoethane	11.060	107	22	3.968	ug/l #	1
65) Chlorobenzene	11.335	112	20	1.915	ug/l #	43
67) Ethyl Benzene	11.518	91	86	4.439	ug/l #	44
68) m/p-Xylenes	11.633	106	121	16.476	ug/l	90
69) o-Xylene	11.938	106	63	9.150	ug/l #	1
70) Styrene	12.115	104	41	3.602	ug/l #	26
74) N-amyl acetate	12.084	43	53	88.223	ug/l #	1
75) 1,1,2,2-Tetrachloroethane	12.536	83	19	48.623	ug/l #	25
76) 1,2,3-Trichloropropane	12.481	75	27	81.382	ug/l #	100
77) Bromobenzene	12.609	156	45	89.565	ug/l #	1
78) n-propylbenzene	12.651	91	57	19.601	ug/l #	54
79) 2-Chlorotoluene	12.682	91	19	12.328	ug/l #	41
80) 1,3,5-Trimethylbenzene	12.822	105	43	23.004	ug/l #	29
81) trans-1,4-Dichloro-2-b...	12.481	75	27	196.531	ug/l #	1
82) 4-Chlorotoluene	12.761	91	39	24.529	ug/l #	41
84) 1,2,4-Trimethylbenzene	13.042	105	76	40.652	ug/l #	31
85) sec-Butylbenzene	13.127	105	20	7.784	ug/l #	57
86) p-Isopropyltoluene	13.499	119	24	11.332	ug/l #	51
88) 1,4-Dichlorobenzene	13.633	146	27	27.346	ug/l #	25
89) n-Butylbenzene	13.615	91	53	26.376	ug/l #	34
91) 1,2-Dichlorobenzene	13.633	146	27	31.240	ug/l #	25
95) Naphthalene	15.145	128	264	291.850	ug/l #	69

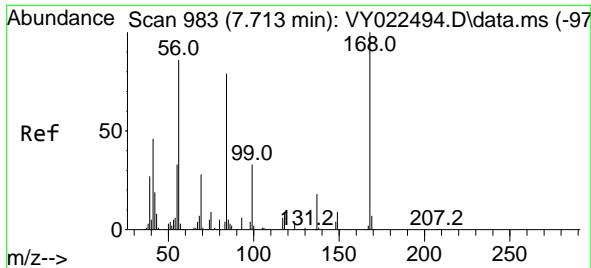
(#) = qualifier out of range (m) = manual integration (+) = signals summed

Data Path : Z:\voasrv\HPCHEM1\MSVOA_Y\Data\VY060325\
 Data File : VY022525.D
 Acq On : 03 Jun 2025 16:11
 Operator : SY/MD
 Sample : Q2161-02
 Misc : 5.80g/5.0mL/MSVOA_Y/SOIL/B
 ALS Vial : 16 Sample Multiplier: 1

Instrument :
 MSVOA_Y
 ClientSampleId :
 B28-SOIL-SAMPLE

Quant Time: Jun 04 04:14:23 2025
 Quant Method : Z:\voasrv\HPCHEM1\MSVOA_Y\methods\82Y060225S.M
 Quant Title : SW846 8260
 QLast Update : Tue Jun 03 03:22:04 2025
 Response via : Initial Calibration

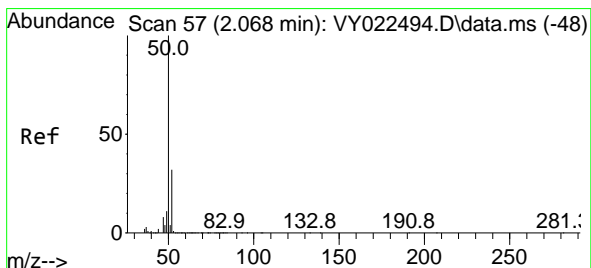
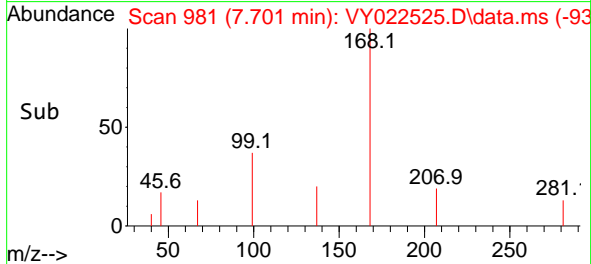
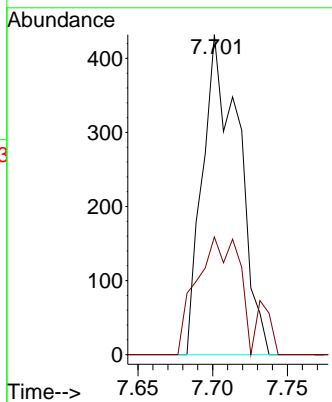
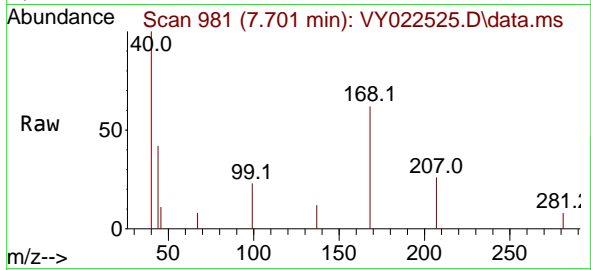




#1
 Pentafluorobenzene
 Concen: 50.000 ug/l
 RT: 7.701 min Scan# 91
 Delta R.T. -0.012 min
 Lab File: VY022525.D
 Acq: 03 Jun 2025 16:11

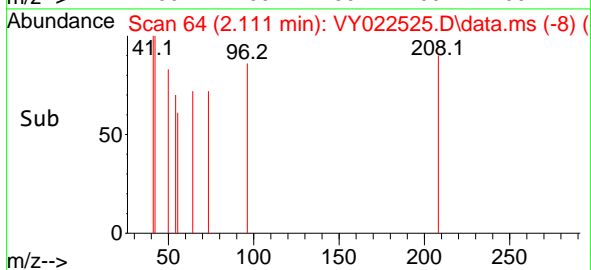
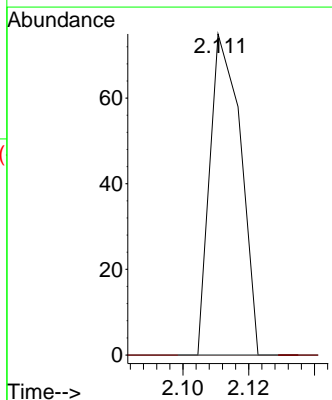
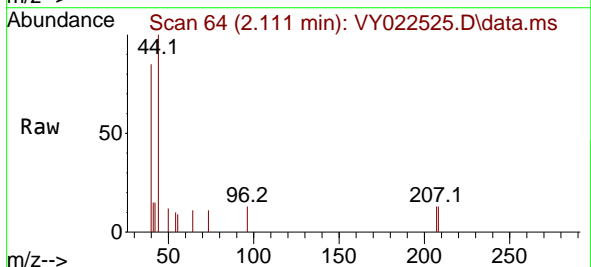
Instrument : MSVOA_Y
 ClientSampleId : B28-SOIL-SAMPLE

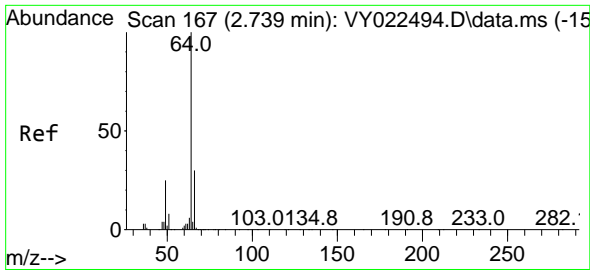
Tgt Ion:168 Resp: 724
 Ion Ratio Lower Upper
 168 100
 99 36.8 44.3 66.5#



#3
 Chloromethane
 Concen: 2.559 ug/l
 RT: 2.111 min Scan# 64
 Delta R.T. 0.043 min
 Lab File: VY022525.D
 Acq: 03 Jun 2025 16:11

Tgt Ion: 50 Resp: 49
 Ion Ratio Lower Upper
 50 100
 52 0.0 26.0 39.0#

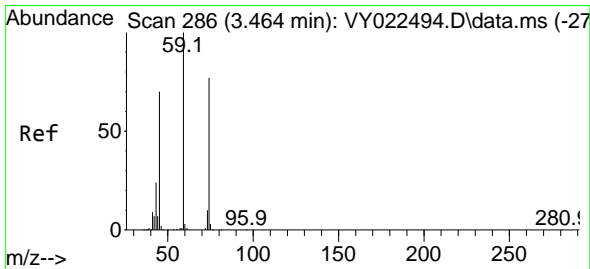
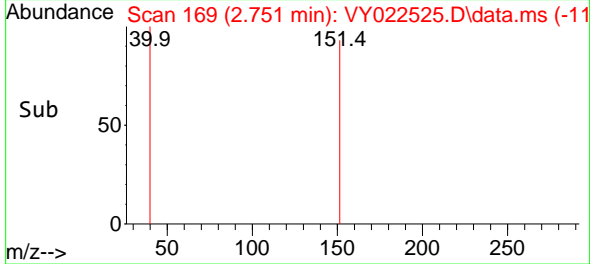
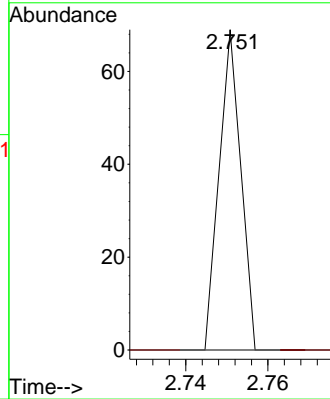
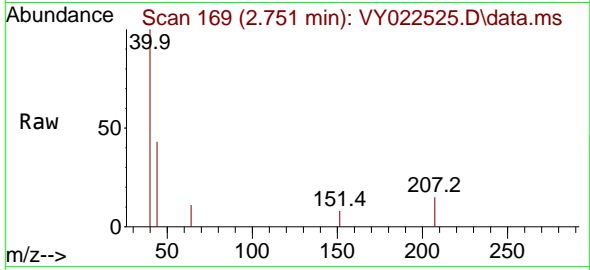




#6
 Chloroethane
 Concen: 1.640 ug/l
 RT: 2.751 min Scan# 11
 Delta R.T. 0.012 min
 Lab File: VY022525.D
 Acq: 03 Jun 2025 16:11

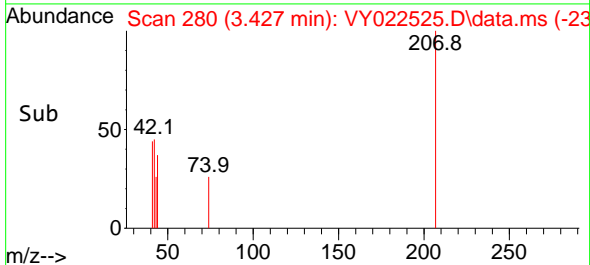
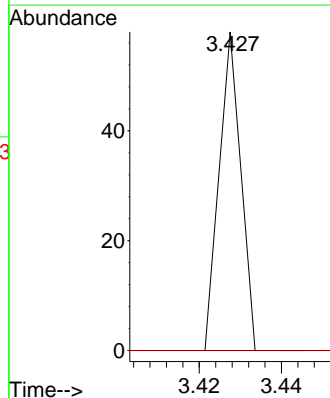
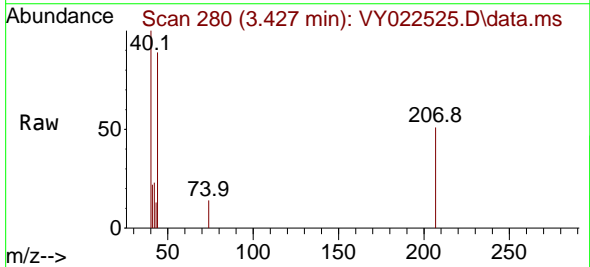
Instrument :
 MSVOA_Y
 ClientSampleId :
 B28-SOIL-SAMPLE

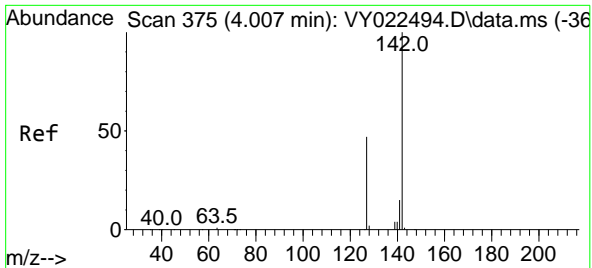
Tgt Ion: 64 Resp: 25
 Ion Ratio Lower Upper
 64 100
 66 0.0 23.8 35.6#



#8
 Diethyl Ether
 Concen: 4.945 ug/l
 RT: 3.427 min Scan# 280
 Delta R.T. -0.037 min
 Lab File: VY022525.D
 Acq: 03 Jun 2025 16:11

Tgt Ion: 74 Resp: 21
 Ion Ratio Lower Upper
 74 100
 45 0.0 45.9 137.6#

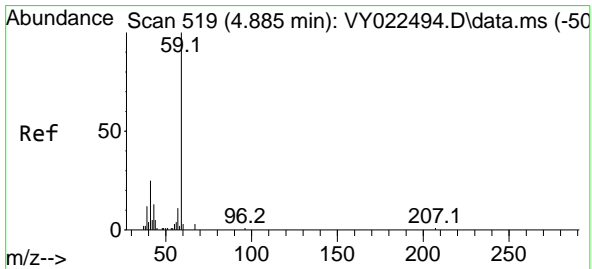
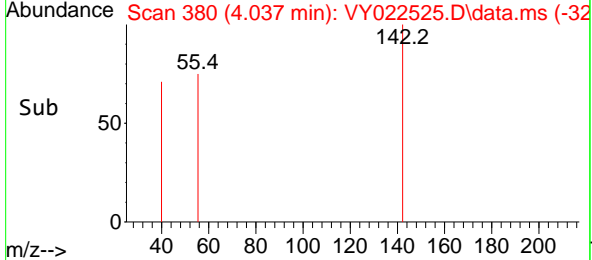
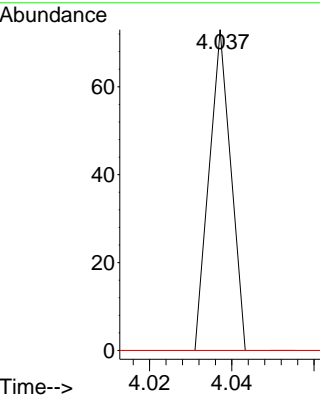
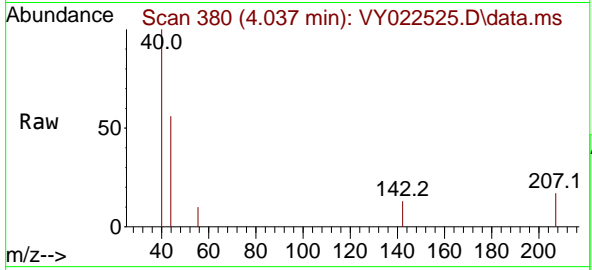




#10
 Methyl Iodide
 Concen: 3.141 ug/l
 RT: 4.037 min Scan# 31
 Delta R.T. 0.030 min
 Lab File: VY022525.D
 Acq: 03 Jun 2025 16:11

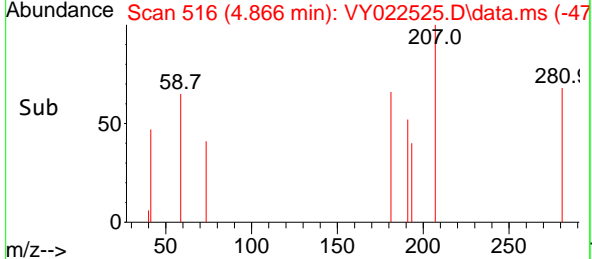
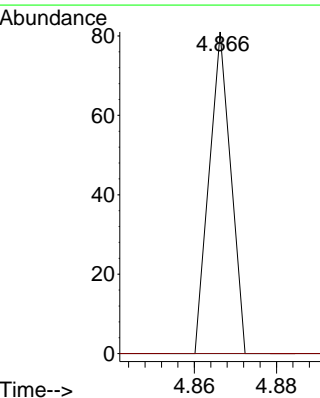
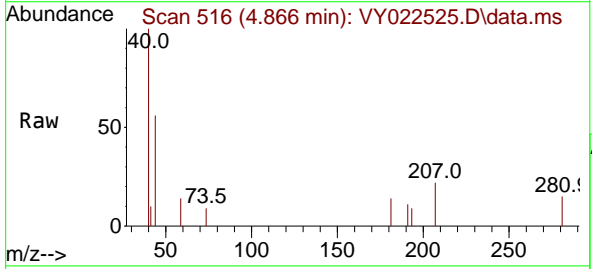
Instrument : MSVOA_Y
 ClientSampleId : B28-SOIL-SAMPLE

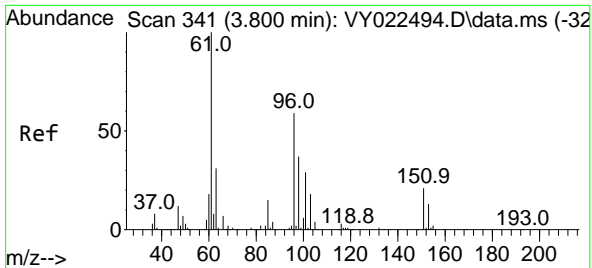
Tgt Ion	Resp	Lower	Upper
142	100		
127	0.0	37.1	55.7#
141	0.0	11.4	17.2#



#11
 Tert butyl alcohol
 Concen: 51.871 ug/l
 RT: 4.866 min Scan# 516
 Delta R.T. -0.018 min
 Lab File: VY022525.D
 Acq: 03 Jun 2025 16:11

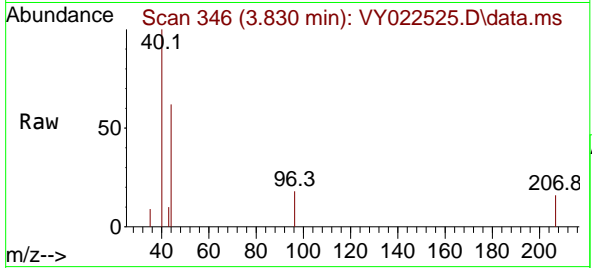
Tgt Ion	Resp	Lower	Upper
59	100		
57	0.0	8.0	12.0#



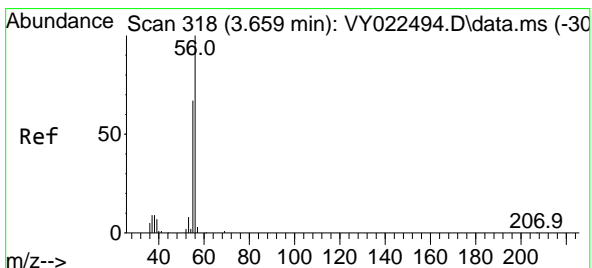
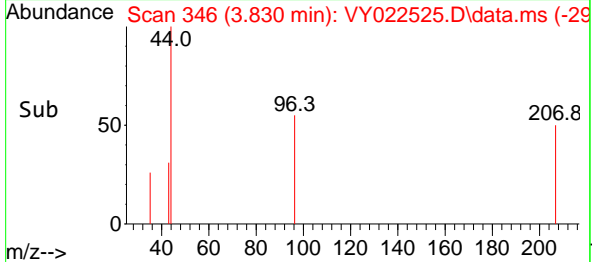
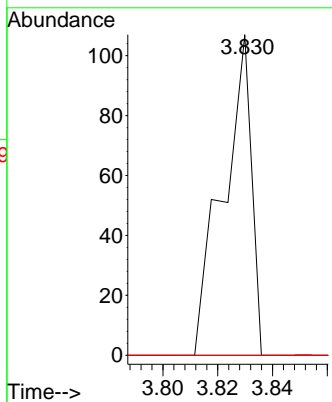


#12
 1,1-Dichloroethene
 Concen: 10.142 ug/l
 RT: 3.830 min Scan# 341
 Delta R.T. 0.030 min
 Lab File: VY022525.D
 Acq: 03 Jun 2025 16:11

Instrument :
 MSVOA_Y
 ClientSampleId :
 B28-SOIL-SAMPLE

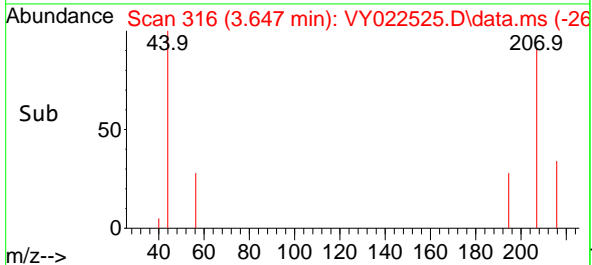
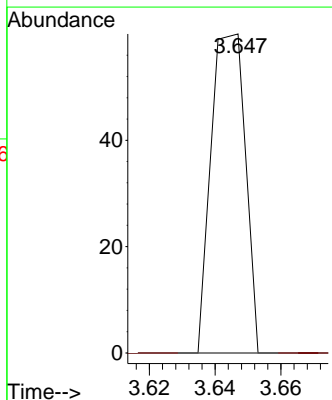
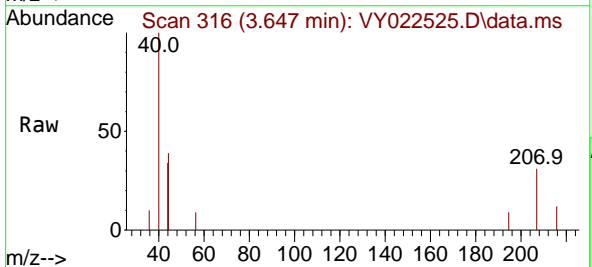


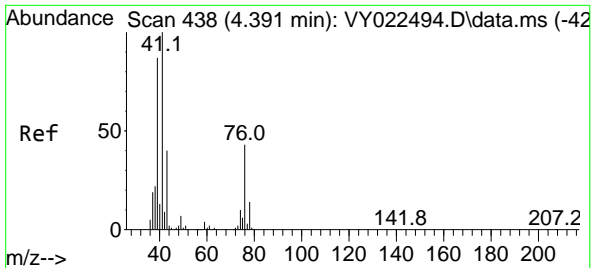
Tgt Ion: 96 Resp: 77
 Ion Ratio Lower Upper
 96 100
 61 0.0 134.6 201.8#
 98 0.0 50.2 75.4#



#13
 Acrolein
 Concen: 61.045 ug/l
 RT: 3.647 min Scan# 316
 Delta R.T. -0.012 min
 Lab File: VY022525.D
 Acq: 03 Jun 2025 16:11

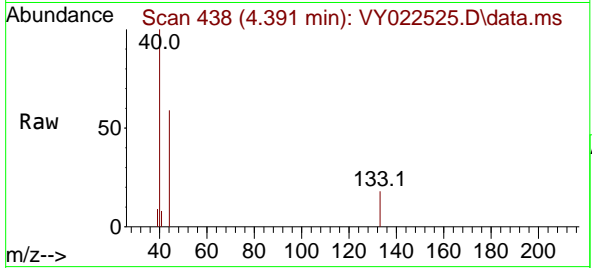
Tgt Ion: 56 Resp: 44
 Ion Ratio Lower Upper
 56 100
 55 0.0 57.0 85.6#



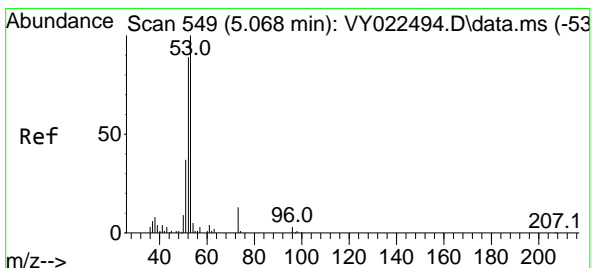
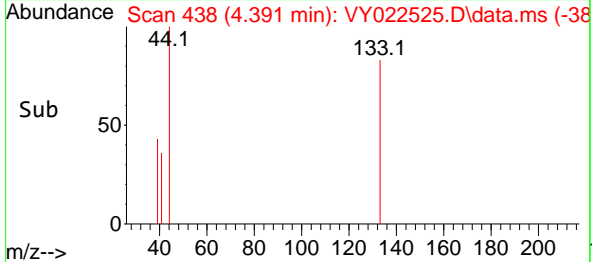
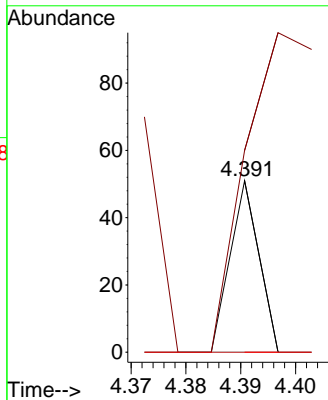


#14
 Allyl chloride
 Concen: 1.594 ug/l
 RT: 4.391 min Scan# 41
 Delta R.T. -0.000 min
 Lab File: VY022525.D
 Acq: 03 Jun 2025 16:11

Instrument : MSVOA_Y
 ClientSampleId : B28-SOIL-SAMPLE

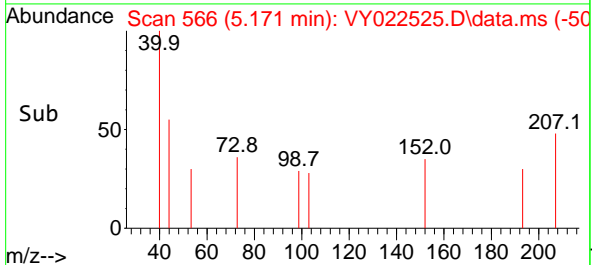
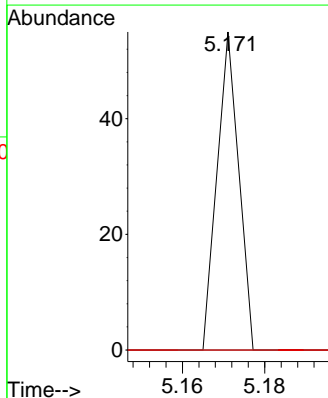
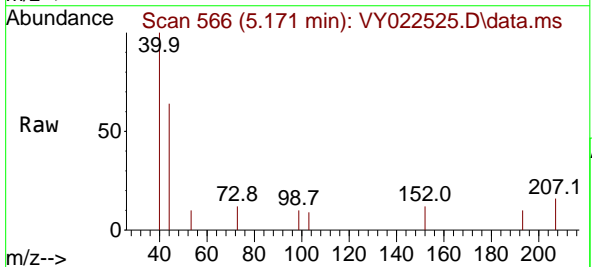


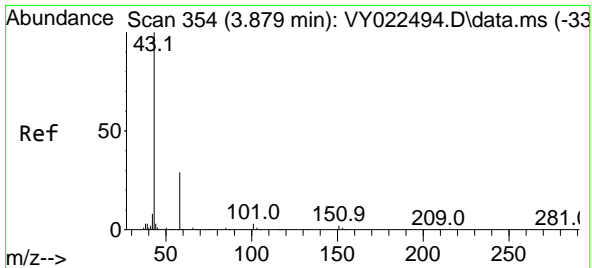
Tgt Ion	Resp	Lower	Upper
41	100		
39	584.2	69.1	103.7#
76	0.0	33.5	50.3#



#15
 Acrylonitrile
 Concen: 11.119 ug/l
 RT: 5.171 min Scan# 566
 Delta R.T. 0.103 min
 Lab File: VY022525.D
 Acq: 03 Jun 2025 16:11

Tgt Ion	Resp	Lower	Upper
53	100		
52	0.0	65.7	98.5#
51	0.0	30.1	45.1#

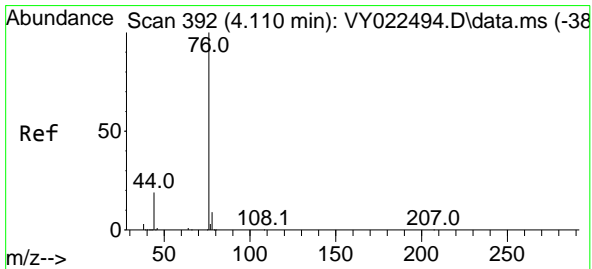
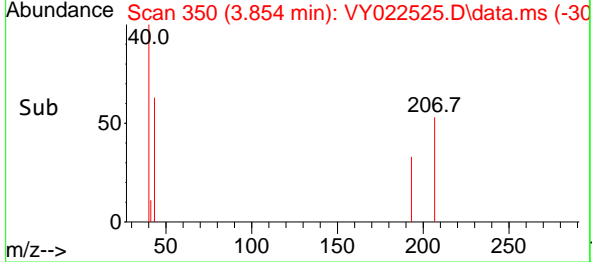
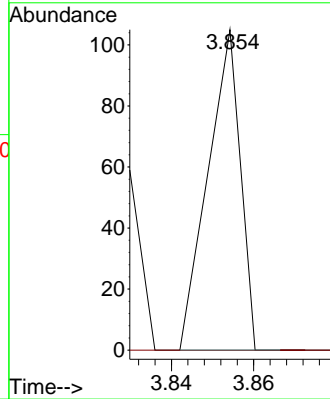
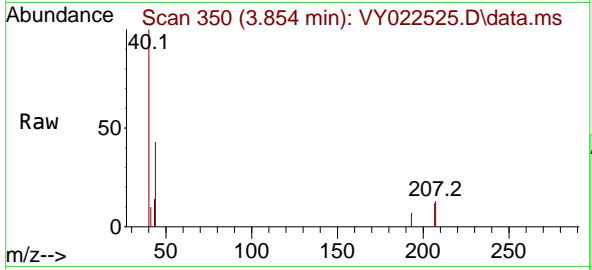




#16
 Acetone
 Concen: 34.661 ug/l
 RT: 3.854 min Scan# 311
 Delta R.T. -0.025 min
 Lab File: VY022525.D
 Acq: 03 Jun 2025 16:11

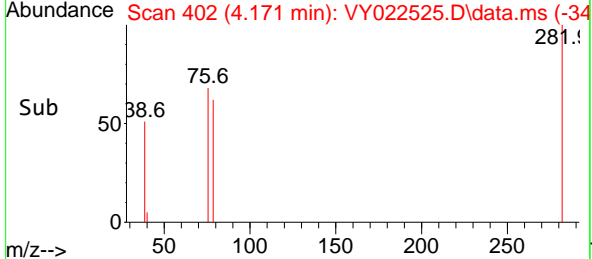
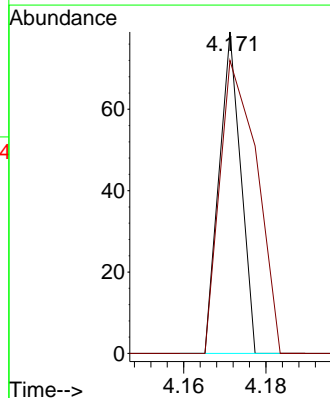
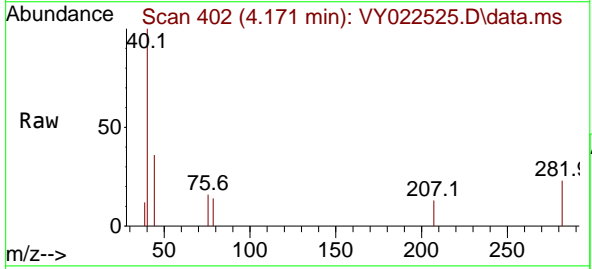
Instrument :
 MSVOA_Y
 ClientSampleId :
 B28-SOIL-SAMPLE

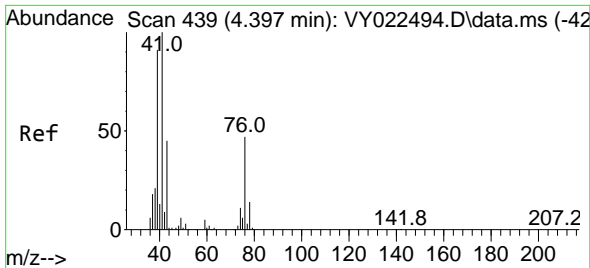
Tgt Ion: 43 Resp: 57
 Ion Ratio Lower Upper
 43 100
 58 0.0 24.0 36.0#



#17
 Carbon Disulfide
 Concen: 1.193 ug/l
 RT: 4.171 min Scan# 402
 Delta R.T. 0.061 min
 Lab File: VY022525.D
 Acq: 03 Jun 2025 16:11

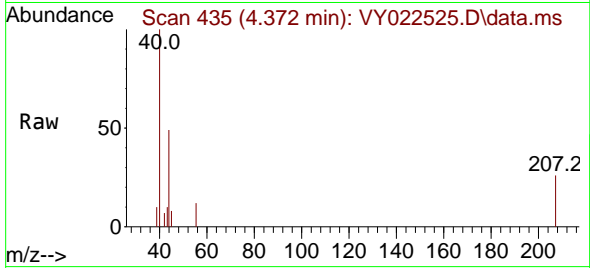
Tgt Ion: 76 Resp: 29
 Ion Ratio Lower Upper
 76 100
 78 91.1 7.4 11.2#



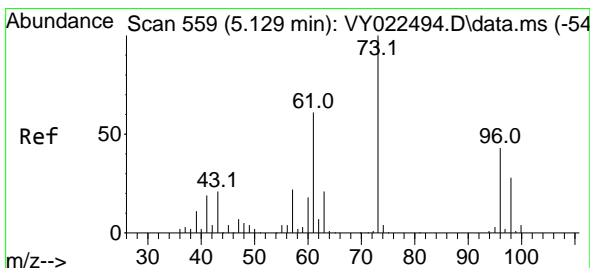
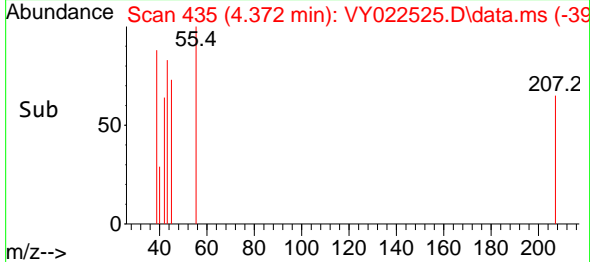
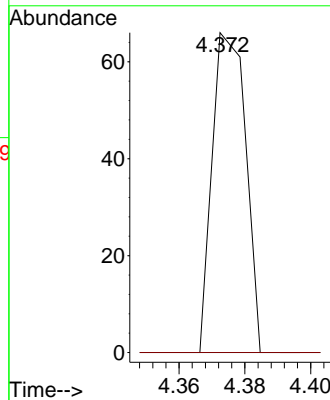


#18
 Methyl Acetate
 Concen: 9.446 ug/l
 RT: 4.372 min Scan# 41
 Delta R.T. -0.025 min
 Lab File: VY022525.D
 Acq: 03 Jun 2025 16:11

Instrument :
 MSVOA_Y
 ClientSampleId :
 B28-SOIL-SAMPLE

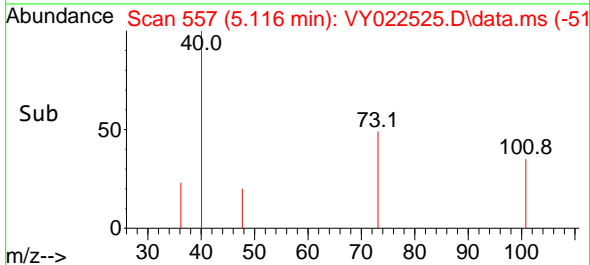
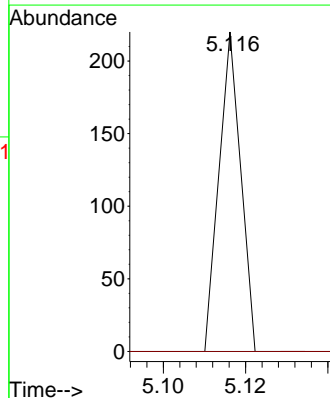
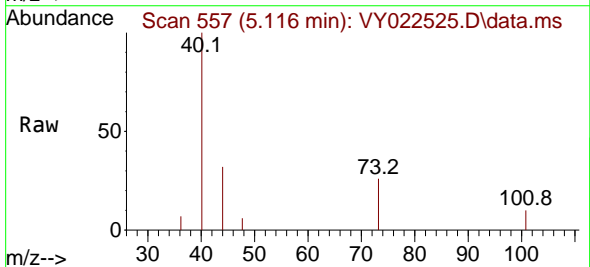


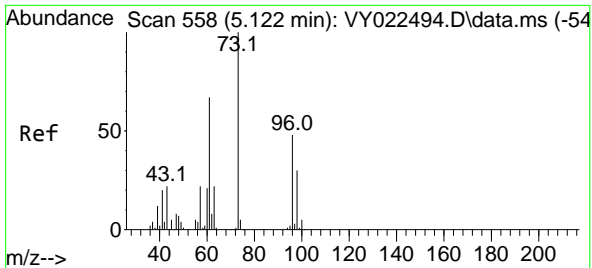
Tgt Ion: 43 Resp: 46
 Ion Ratio Lower Upper
 43 100
 74 0.0 19.8 29.6#



#19
 Methyl tert-butyl Ether
 Concen: 3.741 ug/l
 RT: 5.116 min Scan# 557
 Delta R.T. -0.012 min
 Lab File: VY022525.D
 Acq: 03 Jun 2025 16:11

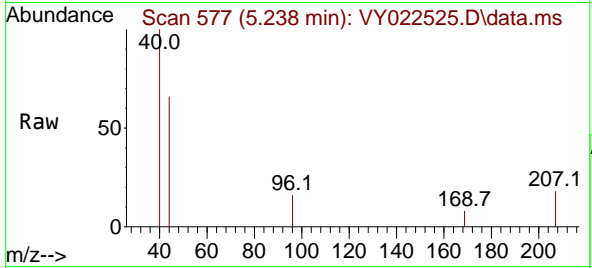
Tgt Ion: 73 Resp: 80
 Ion Ratio Lower Upper
 73 100
 57 0.0 17.4 26.0#



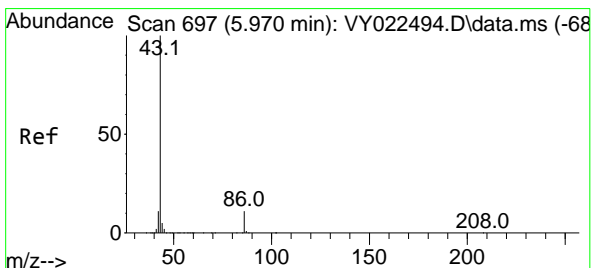
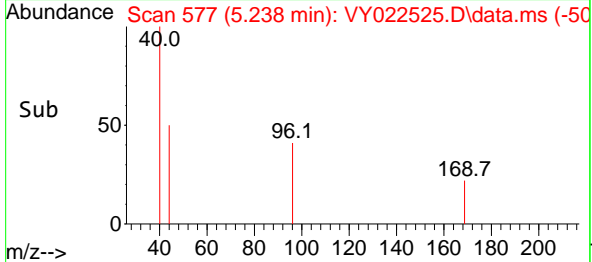
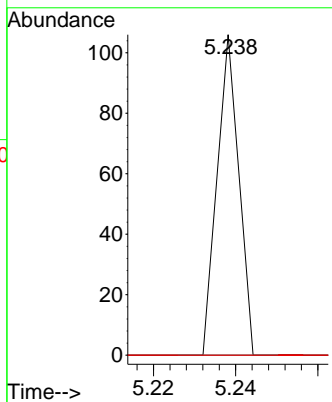


#21
 trans-1,2-Dichloroethene
 Concen: 4.590 ug/l
 RT: 5.238 min Scan# 511
 Delta R.T. 0.116 min
 Lab File: VY022525.D
 Acq: 03 Jun 2025 16:11

Instrument : MSVOA_Y
 ClientSampleId : B28-SOIL-SAMPLE

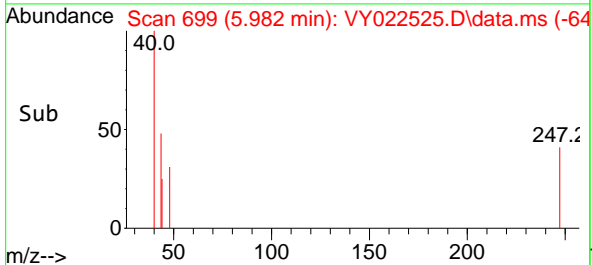
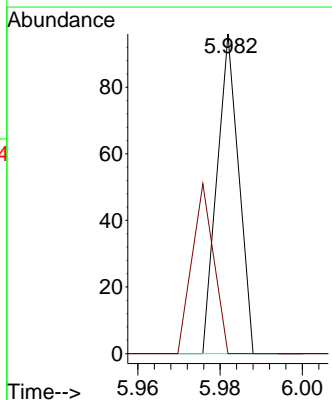
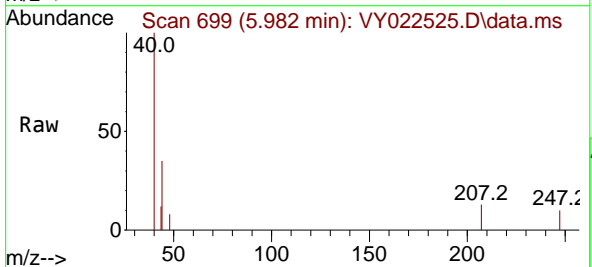


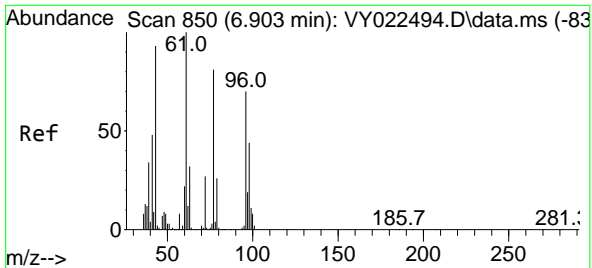
Tgt Ion: 96 Resp: 39
 Ion Ratio Lower Upper
 96 100
 61 0.0 112.6 169.0#
 98 0.0 50.6 75.8#



#23
 Vinyl Acetate
 Concen: 2.229 ug/l
 RT: 5.982 min Scan# 699
 Delta R.T. 0.012 min
 Lab File: VY022525.D
 Acq: 03 Jun 2025 16:11

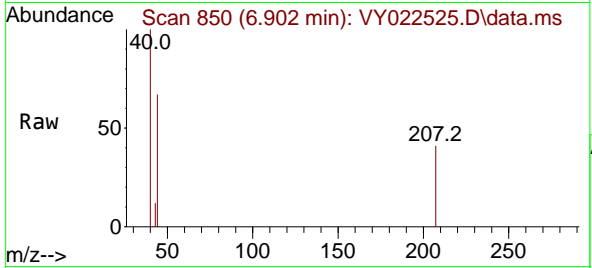
Tgt Ion: 43 Resp: 35
 Ion Ratio Lower Upper
 43 100
 86 0.0 8.6 12.8#



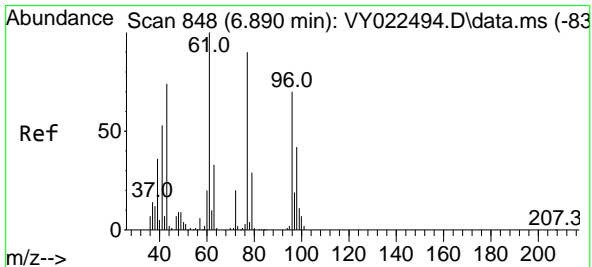
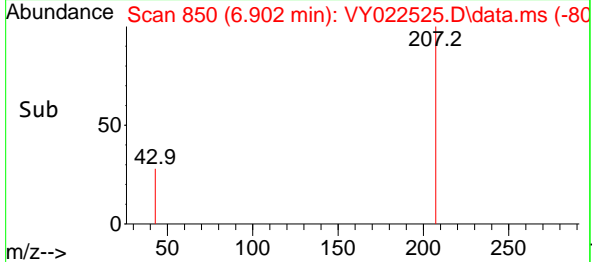
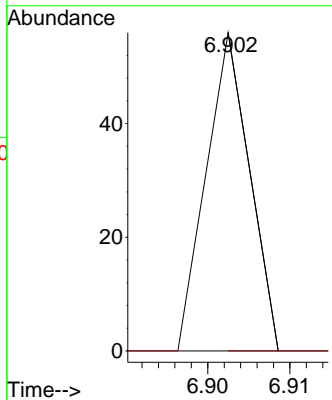


#25
 2-Butanone
 Concen: 8.431 ug/l
 RT: 6.902 min Scan# 811
 Delta R.T. -0.000 min
 Lab File: VY022525.D
 Acq: 03 Jun 2025 16:11

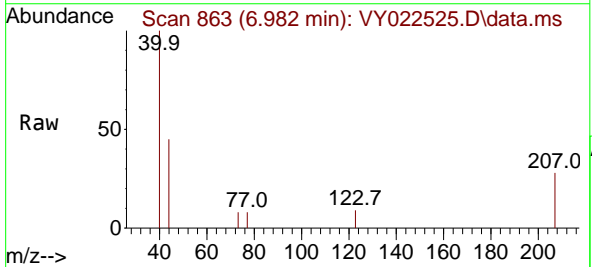
Instrument :
 MSVOA_Y
 ClientSampleId :
 B28-SOIL-SAMPLE



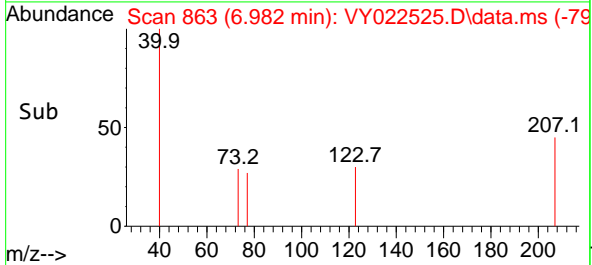
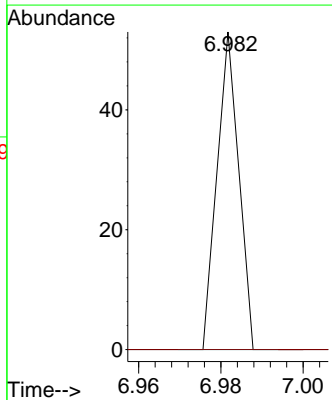
Tgt Ion: 43 Resp: 20
 Ion Ratio Lower Upper
 43 100
 72 0.0 22.9 34.3#

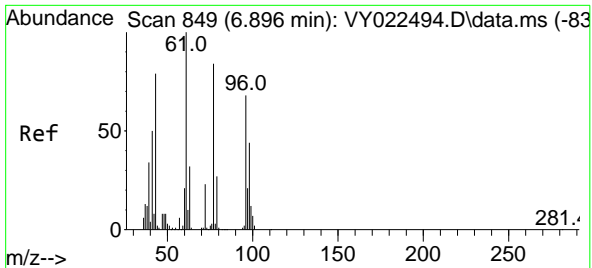


#26
 2,2-Dichloropropane
 Concen: 1.376 ug/l
 RT: 6.982 min Scan# 863
 Delta R.T. 0.091 min
 Lab File: VY022525.D
 Acq: 03 Jun 2025 16:11



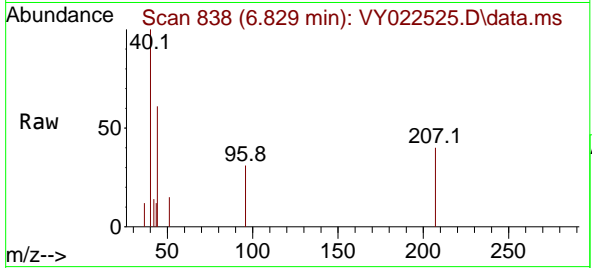
Tgt Ion: 77 Resp: 19
 Ion Ratio Lower Upper
 77 100
 97 0.0 11.4 34.2#





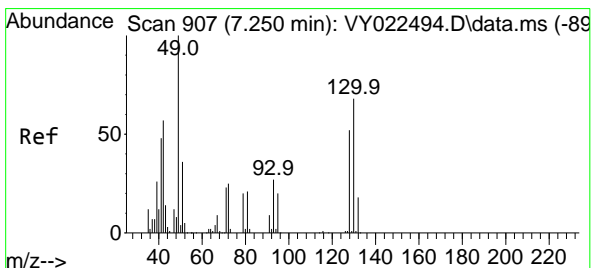
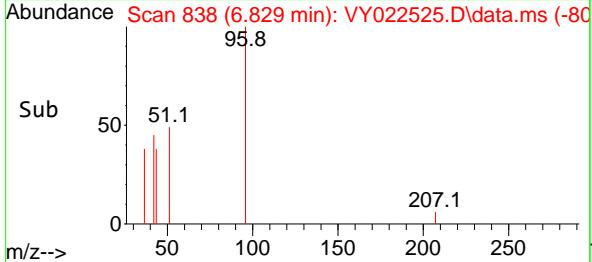
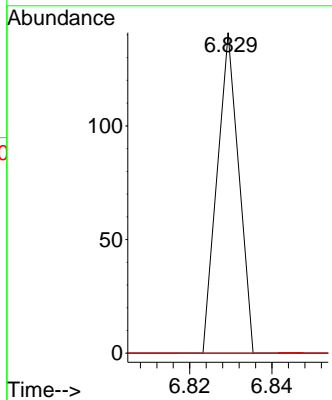
#27
 cis-1,2-Dichloroethene
 Concen: 5.294 ug/l
 RT: 6.829 min Scan# 811
 Delta R.T. -0.067 min
 Lab File: VY022525.D
 Acq: 03 Jun 2025 16:11

Instrument :
 MSVOA_Y
 ClientSampleId :
 B28-SOIL-SAMPLE



Tgt Ion: 96 Resp: 52

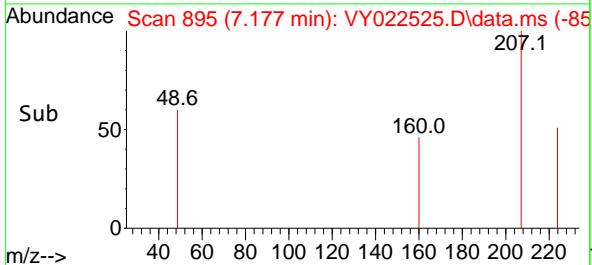
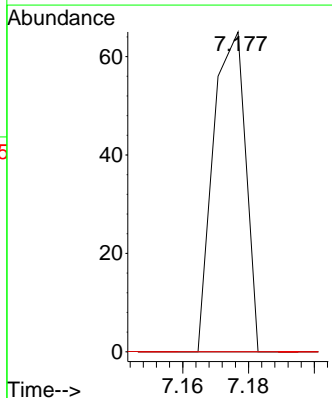
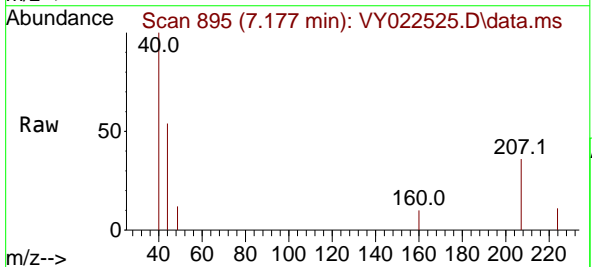
Ion	Ratio	Lower	Upper
96	100		
61	0.0	0.0	290.0
98	0.0	0.0	128.4

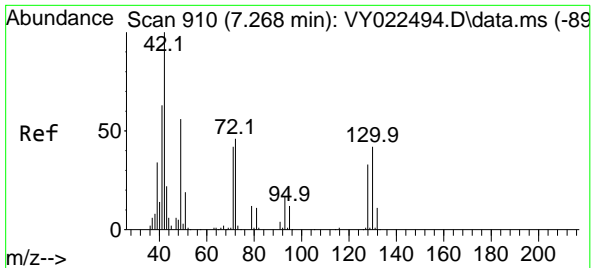


#28
 Bromochloromethane
 Concen: 6.458 ug/l
 RT: 7.177 min Scan# 895
 Delta R.T. -0.073 min
 Lab File: VY022525.D
 Acq: 03 Jun 2025 16:11

Tgt Ion: 49 Resp: 44

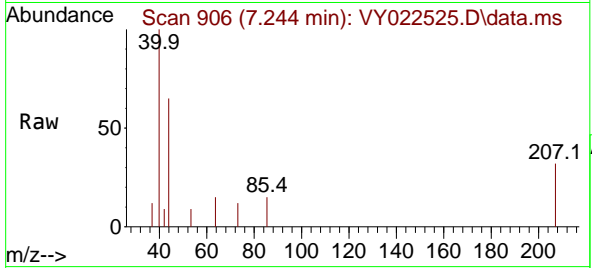
Ion	Ratio	Lower	Upper
49	100		
129	0.0	0.0	3.6
130	0.0	55.7	83.5





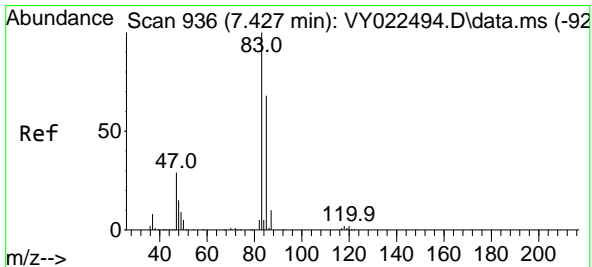
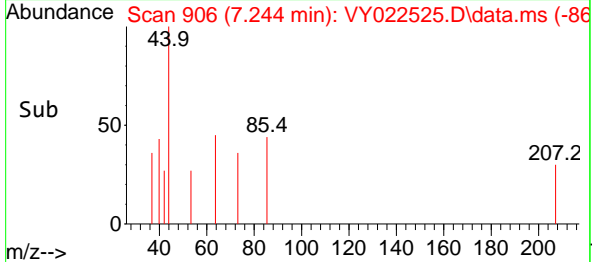
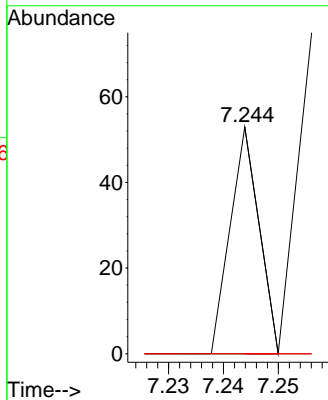
#29
 Tetrahydrofuran
 Concen: 12.419 ug/l
 RT: 7.244 min Scan# 906
 Delta R.T. -0.025 min
 Lab File: VY022525.D
 Acq: 03 Jun 2025 16:11

Instrument : MSVOA_Y
 ClientSampleId : B28-SOIL-SAMPLE



Tgt Ion: 42 Resp: 19

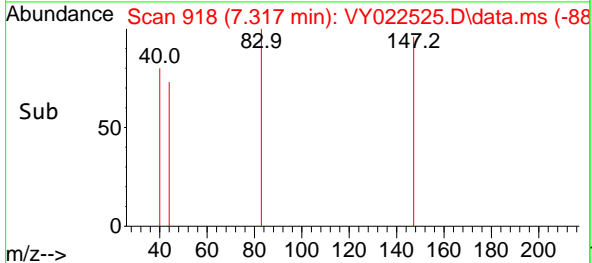
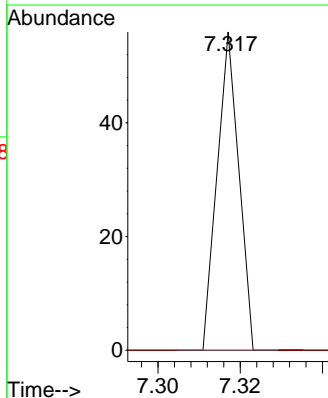
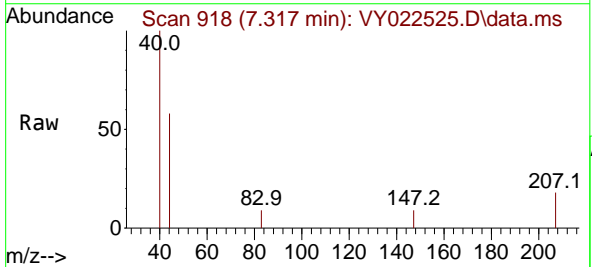
Ion	Ratio	Lower	Upper
42	100		
72	0.0	37.4	56.2#
71	0.0	34.2	51.2#

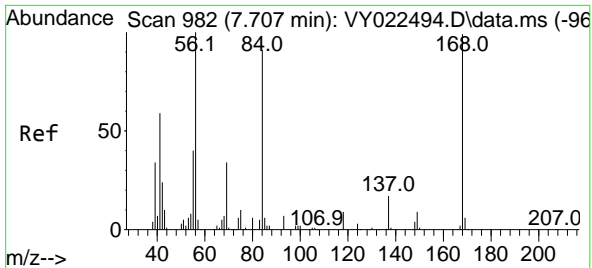


#30
 Chloroform
 Concen: 1.292 ug/l
 RT: 7.317 min Scan# 918
 Delta R.T. -0.110 min
 Lab File: VY022525.D
 Acq: 03 Jun 2025 16:11

Tgt Ion: 83 Resp: 20

Ion	Ratio	Lower	Upper
83	100		
85	0.0	54.2	81.4#



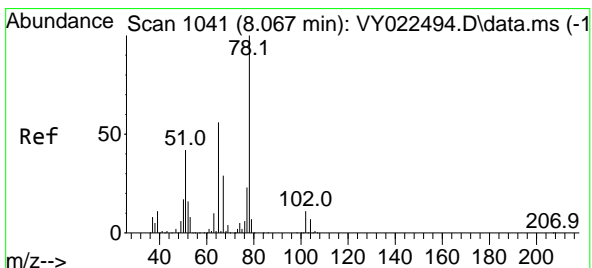
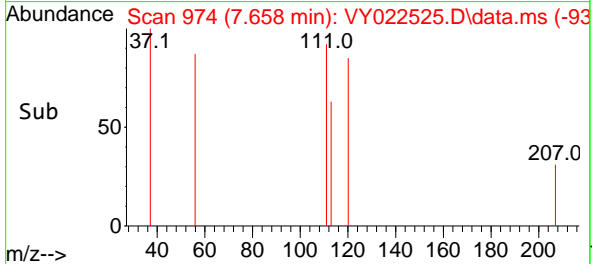
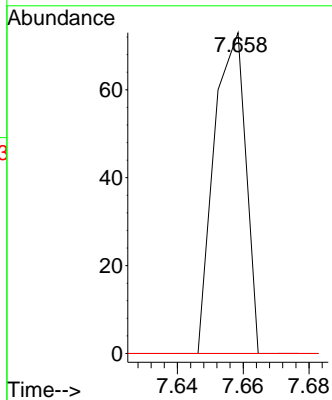
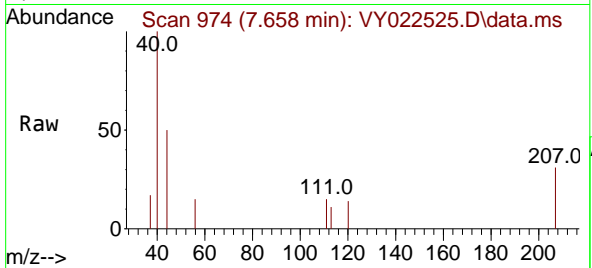


#31
 Cyclohexane
 Concen: 3.149 ug/l
 RT: 7.658 min Scan# 91
 Delta R.T. -0.049 min
 Lab File: VY022525.D
 Acq: 03 Jun 2025 16:11

Instrument :
 MSVOA_Y
 ClientSampleId :
 B28-SOIL-SAMPLE

Tgt Ion: 56 Resp: 49

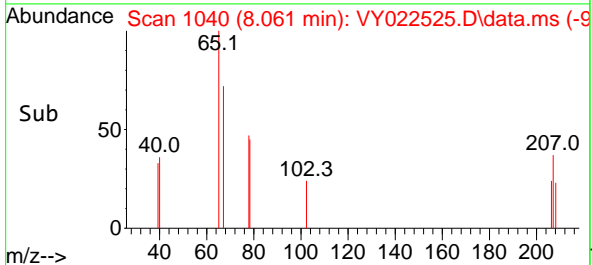
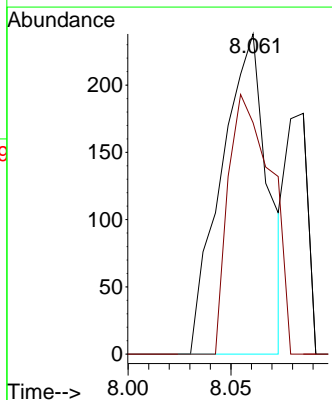
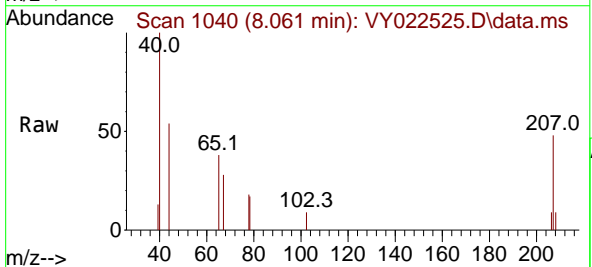
Ion	Ratio	Lower	Upper
56	100		
69	0.0	27.0	40.6#
84	0.0	72.6	109.0#

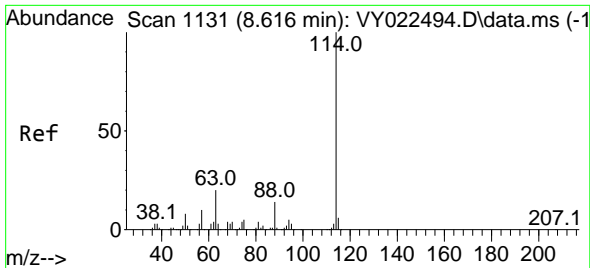


#33
 1,2-Dichloroethane-d4
 Concen: 46.434 ug/l
 RT: 8.061 min Scan# 1040
 Delta R.T. -0.006 min
 Lab File: VY022525.D
 Acq: 03 Jun 2025 16:11

Tgt Ion: 65 Resp: 376

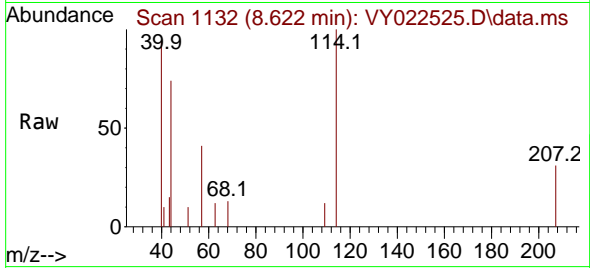
Ion	Ratio	Lower	Upper
65	100		
67	74.7	0.0	103.4





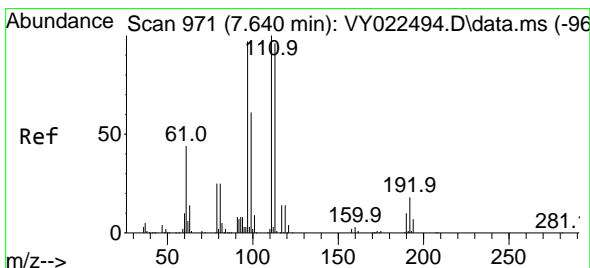
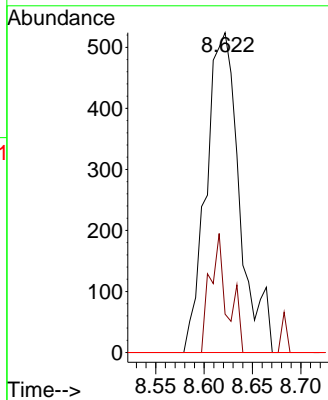
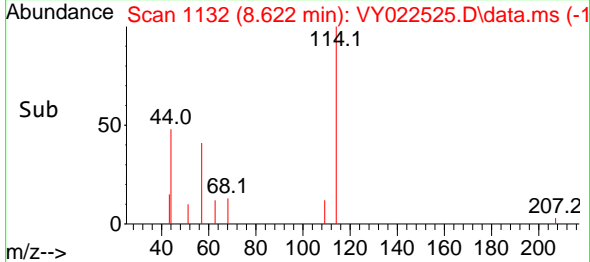
#34
 1,4-Difluorobenzene
 Concen: 50.000 ug/l
 RT: 8.622 min Scan# 1132
 Delta R.T. 0.006 min
 Lab File: VY022525.D
 Acq: 03 Jun 2025 16:11

Instrument : MSVOA_Y
 ClientSampleId : B28-SOIL-SAMPLE

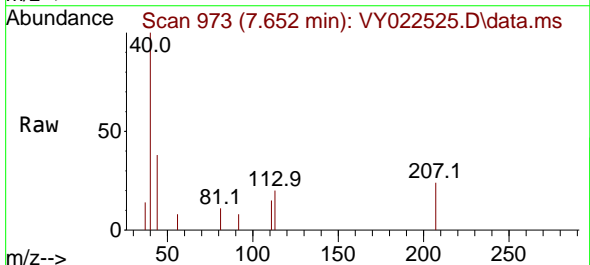


Tgt Ion:114 Resp: 1254

Ion	Ratio	Lower	Upper
114	100		
63	12.0	0.0	40.8
88	0.0	0.0	27.8

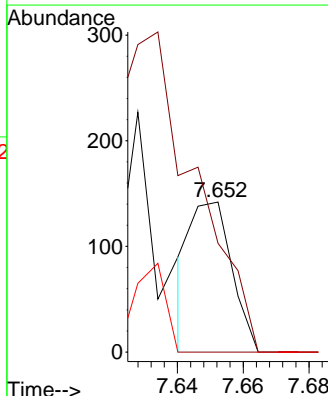
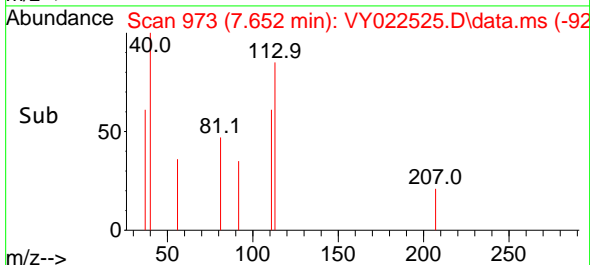


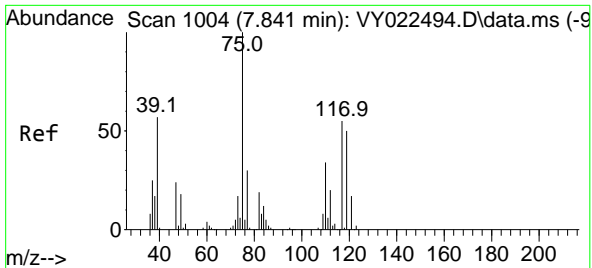
#35
 Dibromofluoromethane
 Concen: 16.300 ug/l
 RT: 7.652 min Scan# 973
 Delta R.T. 0.012 min
 Lab File: VY022525.D
 Acq: 03 Jun 2025 16:11



Tgt Ion:113 Resp: 122

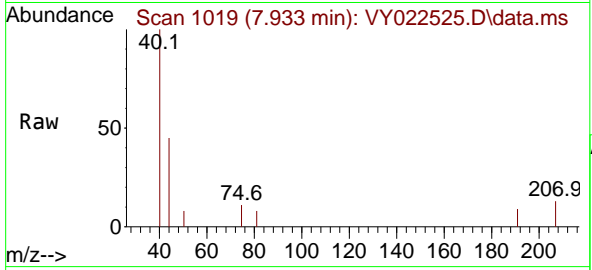
Ion	Ratio	Lower	Upper
113	100		
111	0.0	81.1	121.7#
192	0.0	14.2	21.2#



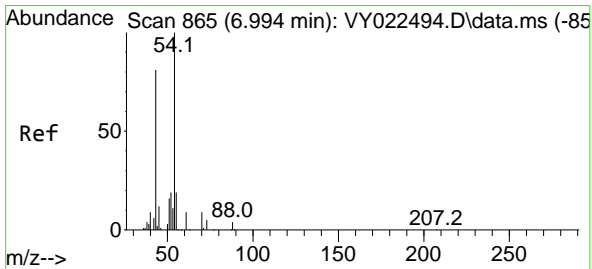
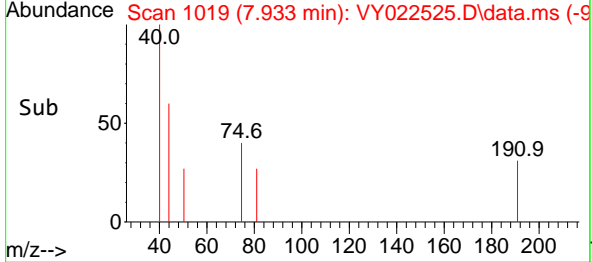
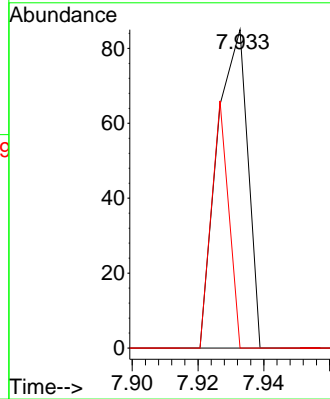


#36
 1,1-Dichloropropene
 Concen: 4.528 ug/l
 RT: 7.933 min Scan# 1019
 Delta R.T. 0.091 min
 Lab File: VY022525.D
 Acq: 03 Jun 2025 16:11

Instrument : MSVOA_Y
 ClientSampleId : B28-SOIL-SAMPLE

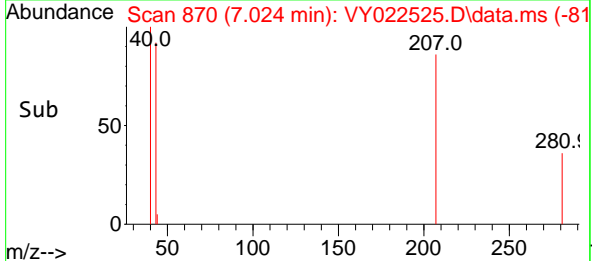
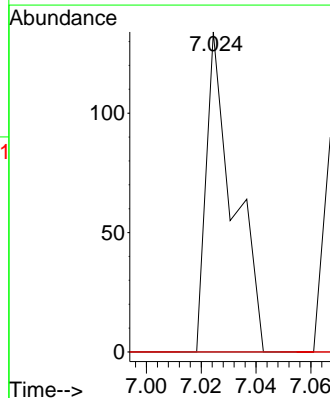
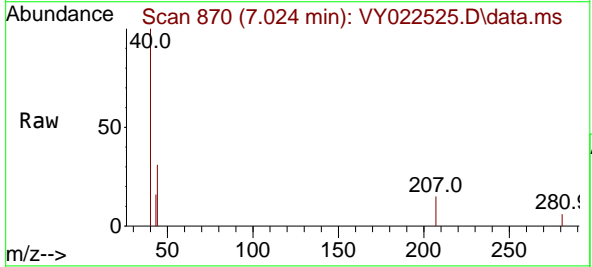


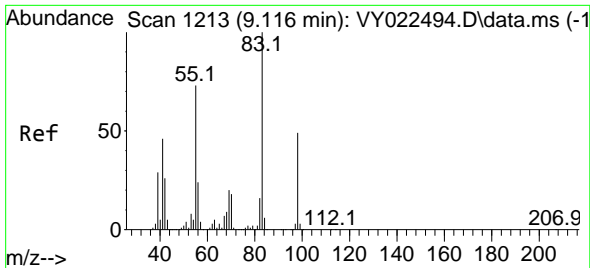
Tgt Ion: 75 Resp: 55
 Ion Ratio Lower Upper
 75 100
 110 0.0 16.9 50.7#
 77 43.6 24.8 37.2#



#37
 Ethyl Acetate
 Concen: 17.167 ug/l
 RT: 7.024 min Scan# 870
 Delta R.T. 0.030 min
 Lab File: VY022525.D
 Acq: 03 Jun 2025 16:11

Tgt Ion: 43 Resp: 93
 Ion Ratio Lower Upper
 43 100
 61 0.0 11.5 17.3#
 70 0.0 7.2 10.8#

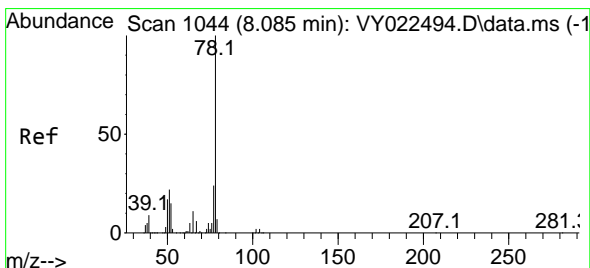
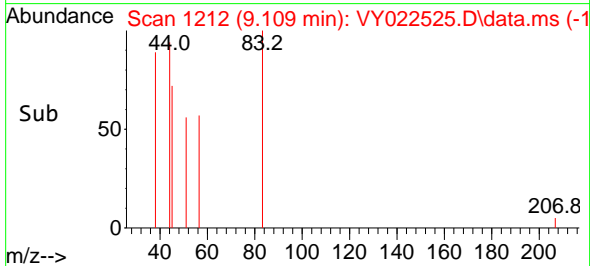
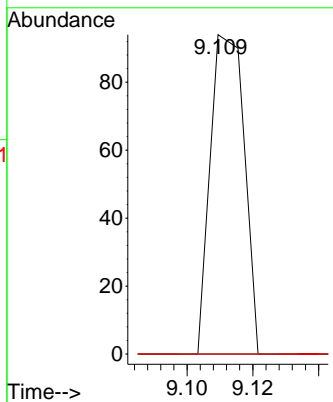
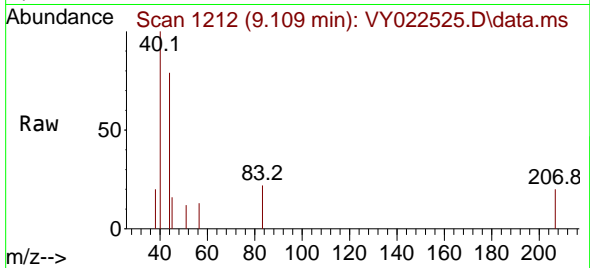




#39
 Methylcyclohexane
 Concen: 4.104 ug/l
 RT: 9.109 min Scan# 11
 Delta R.T. -0.006 min
 Lab File: VY022525.D
 Acq: 03 Jun 2025 16:11

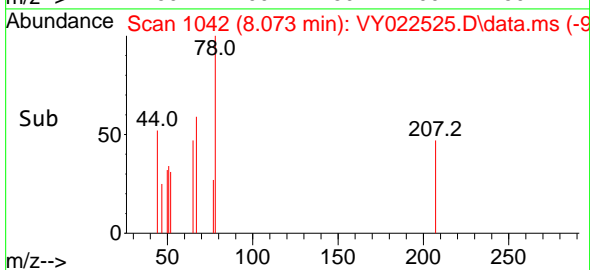
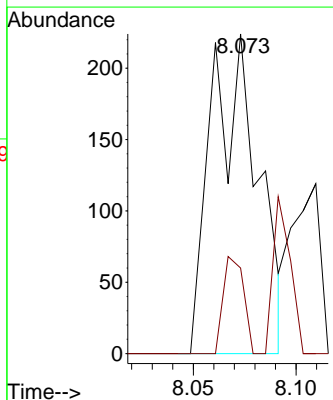
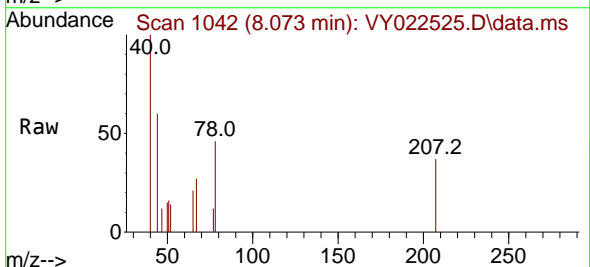
Instrument :
 MSVOA_Y
 ClientSampleId :
 B28-SOIL-SAMPLE

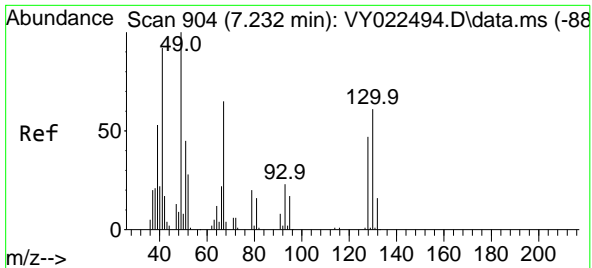
Tgt Ion	Resp	Lower	Upper
83	100		
55	0.0	58.1	87.1#
98	0.0	39.0	58.6#



#40
 Benzene
 Concen: 9.866 ug/l
 RT: 8.073 min Scan# 1042
 Delta R.T. -0.012 min
 Lab File: VY022525.D
 Acq: 03 Jun 2025 16:11

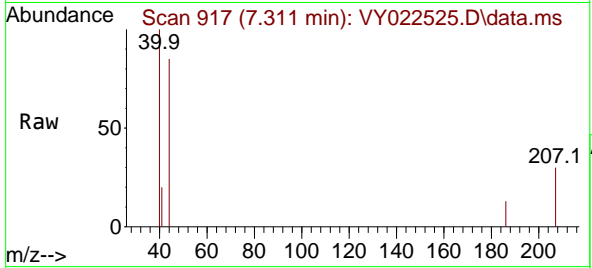
Tgt Ion	Resp	Lower	Upper
78	100		
77	26.8	19.3	28.9





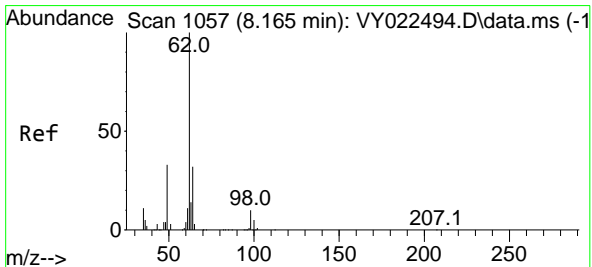
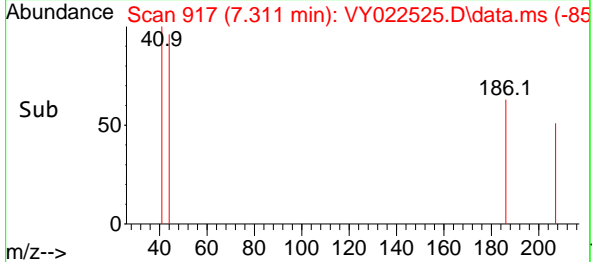
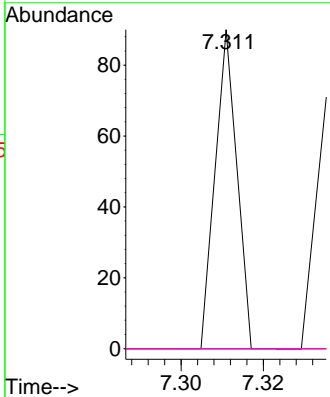
#41
 Methacrylonitrile
 Concen: 10.429 ug/l
 RT: 7.311 min Scan# 917
 Delta R.T. 0.079 min
 Lab File: VY022525.D
 Acq: 03 Jun 2025 16:11

Instrument :
 MSVOA_Y
 ClientSampleId :
 B28-SOIL-SAMPLE



Tgt Ion: 41 Resp: 33

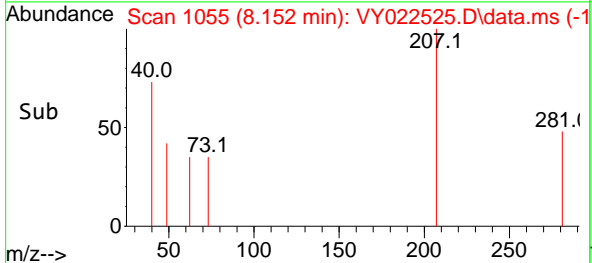
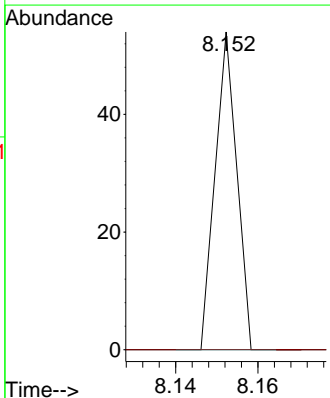
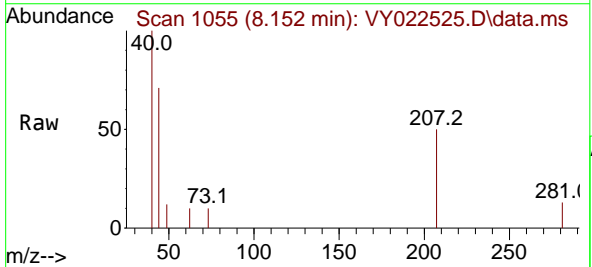
Ion	Ratio	Lower	Upper
41	100		
39	0.0	46.6	69.8#
67	0.0	63.3	94.9#
52	0.0	27.5	41.3#

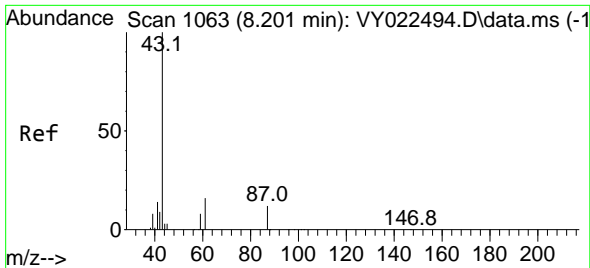


#42
 1,2-Dichloroethane
 Concen: 2.041 ug/l
 RT: 8.152 min Scan# 1055
 Delta R.T. -0.012 min
 Lab File: VY022525.D
 Acq: 03 Jun 2025 16:11

Tgt Ion: 62 Resp: 20

Ion	Ratio	Lower	Upper
62	100		
98	0.0	0.0	19.2



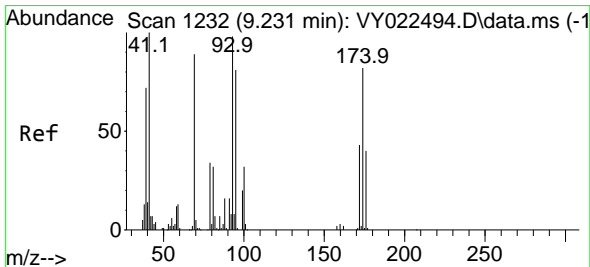
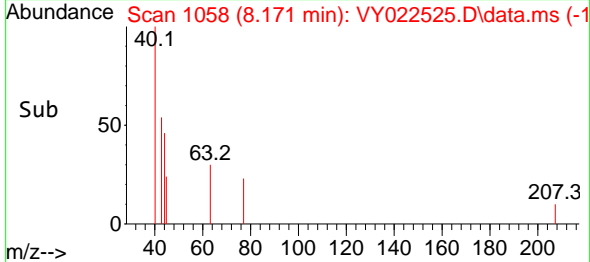
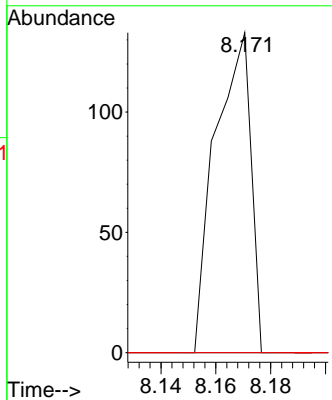
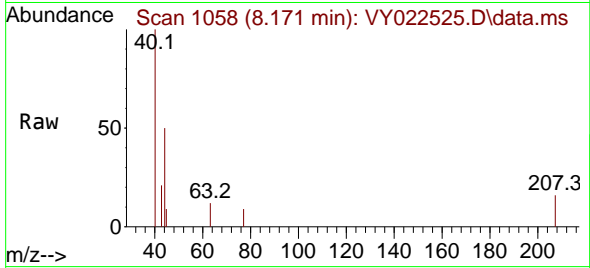


#43
 Isopropyl Acetate
 Concen: 10.256 ug/l
 RT: 8.171 min Scan# 1063
 Delta R.T. -0.031 min
 Lab File: VY022525.D
 Acq: 03 Jun 2025 16:11

Instrument : MSVOA_Y
 ClientSampleId : B28-SOIL-SAMPLE

Tgt Ion: 43 Resp: 120

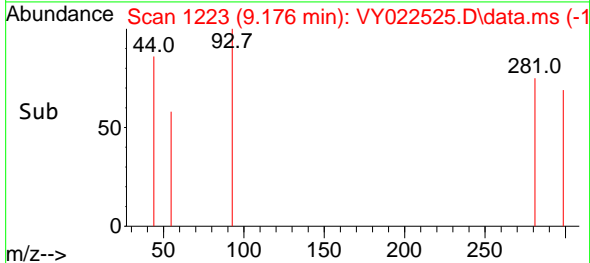
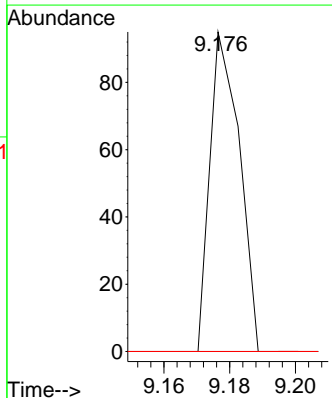
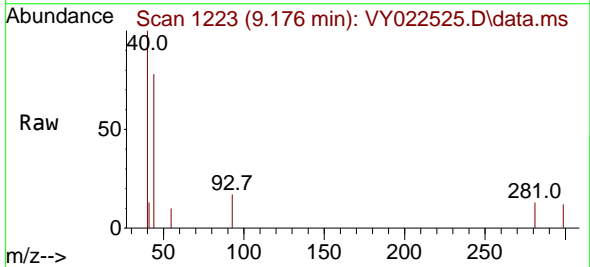
Ion	Ratio	Lower	Upper
43	100		
61	0.0	15.6	23.4#
87	0.0	10.2	15.4#

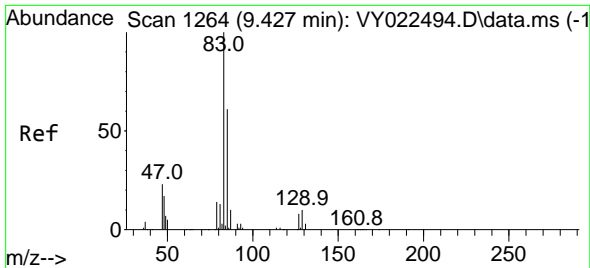


#46
 Dibromomethane
 Concen: 12.368 ug/l
 RT: 9.176 min Scan# 1223
 Delta R.T. -0.055 min
 Lab File: VY022525.D
 Acq: 03 Jun 2025 16:11

Tgt Ion: 93 Resp: 59

Ion	Ratio	Lower	Upper
93	100		
95	0.0	65.6	98.4#
174	0.0	70.4	105.6#

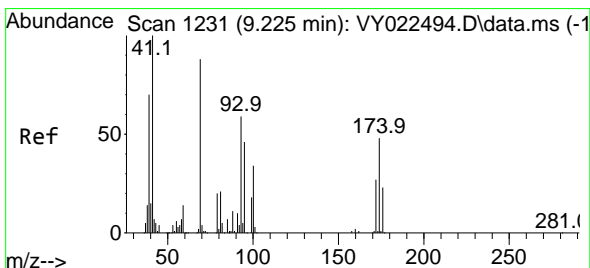
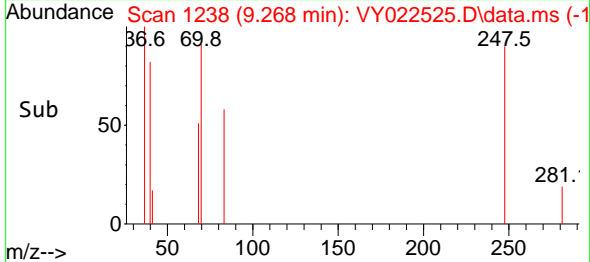
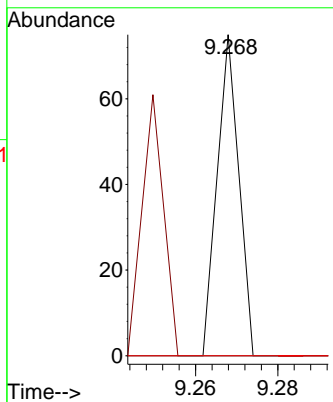
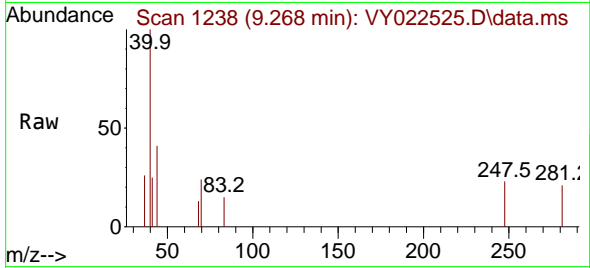




#47
 Bromodichloromethane
 Concen: 2.232 ug/l
 RT: 9.268 min Scan# 11
 Delta R.T. -0.159 min
 Lab File: VY022525.D
 Acq: 03 Jun 2025 16:11

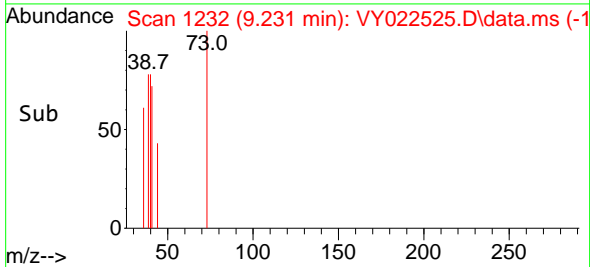
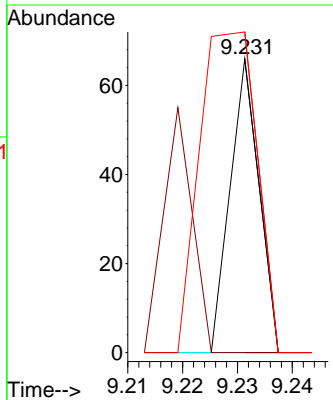
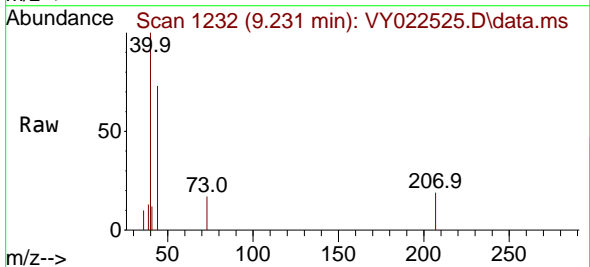
Instrument :
 MSVOA_Y
 ClientSampleId :
 B28-SOIL-SAMPLE

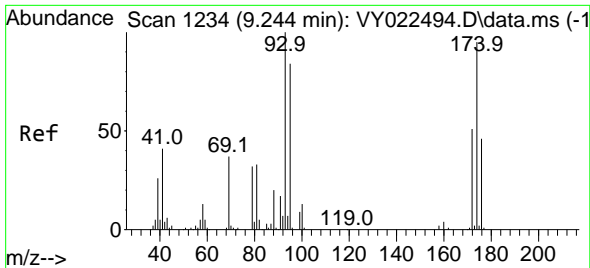
Tgt Ion	Resp	Lower	Upper
83	100		
85	0.0	49.1	73.7#
127	0.0	6.2	9.4#



#48
 Methyl methacrylate
 Concen: 4.371 ug/l
 RT: 9.231 min Scan# 1232
 Delta R.T. 0.006 min
 Lab File: VY022525.D
 Acq: 03 Jun 2025 16:11

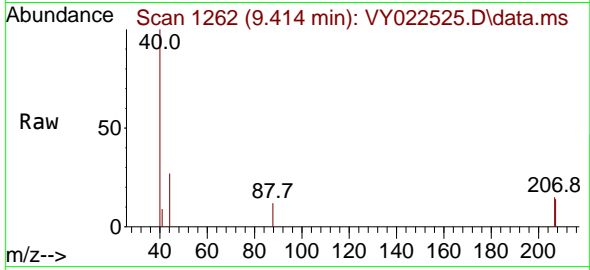
Tgt Ion	Resp	Lower	Upper
41	100		
69	83.3	67.8	101.8
39	216.7	55.0	82.4#



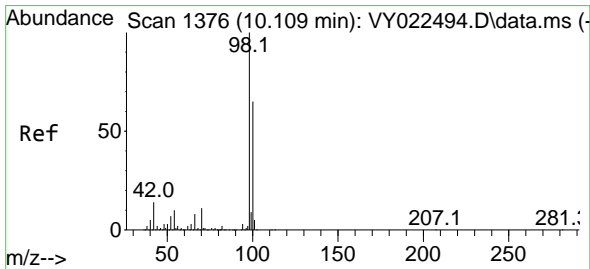
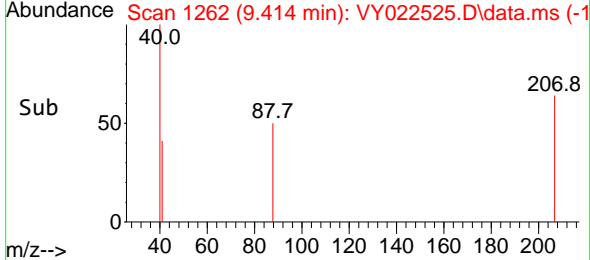
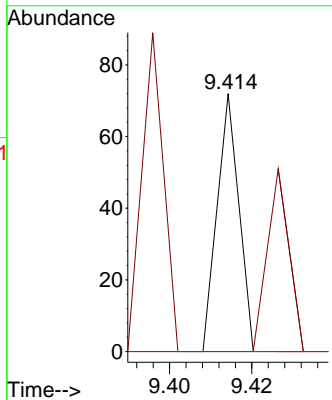


#49
 1,4-Dioxane
 Concen: 460.040 ug/l
 RT: 9.414 min Scan# 11
 Delta R.T. 0.171 min
 Lab File: VY022525.D
 Acq: 03 Jun 2025 16:11

Instrument :
 MSVOA_Y
 ClientSampleId :
 B28-SOIL-SAMPLE

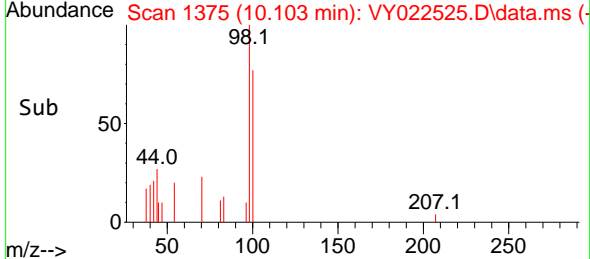
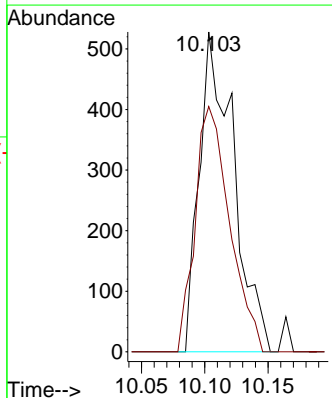
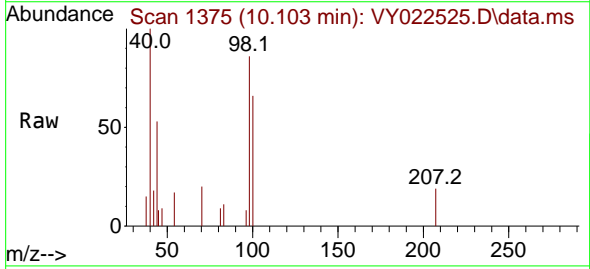


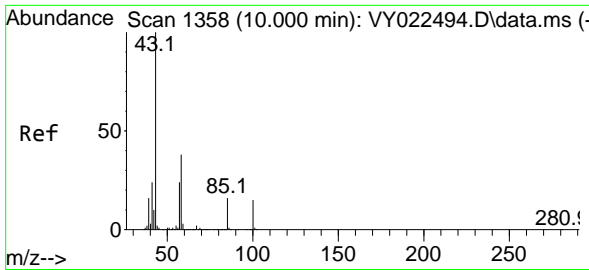
Tgt Ion	Resp	Lower	Upper
88	100		
43	73.1	25.4	38.2#
58	0.0	54.9	82.3#



#50
 Toluene-d8
 Concen: 32.966 ug/l
 RT: 10.103 min Scan# 1375
 Delta R.T. -0.006 min
 Lab File: VY022525.D
 Acq: 03 Jun 2025 16:11

Tgt Ion	Resp	Lower	Upper
98	100		
100	77.2	51.4	77.0#

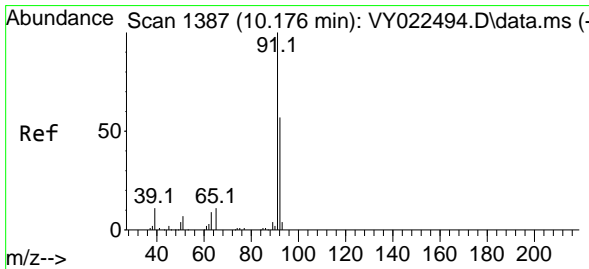
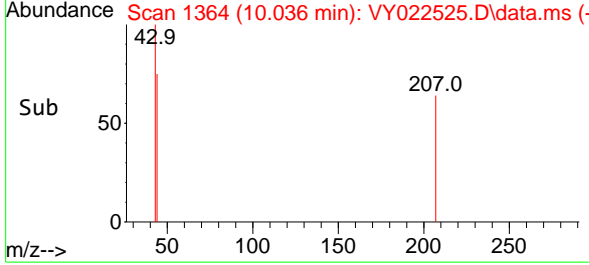
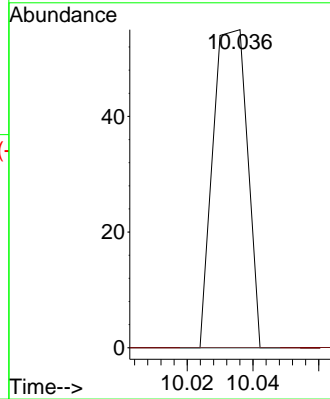
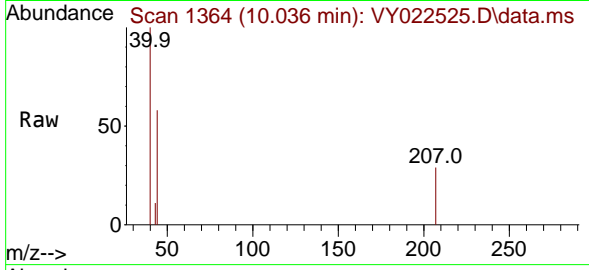




#51
 4-Methyl-2-Pentanone
 Concen: 6.857 ug/l
 RT: 10.036 min Scan# 1358
 Delta R.T. 0.036 min
 Lab File: VY022525.D
 Acq: 03 Jun 2025 16:11

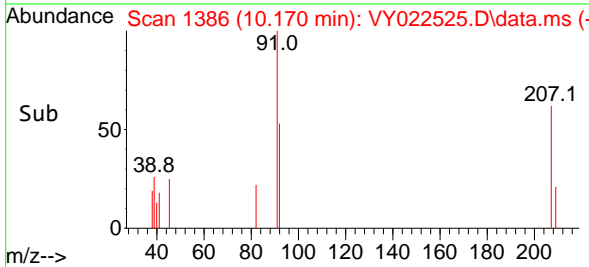
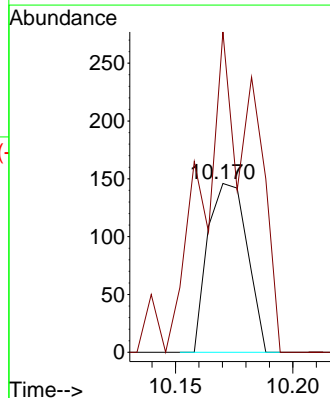
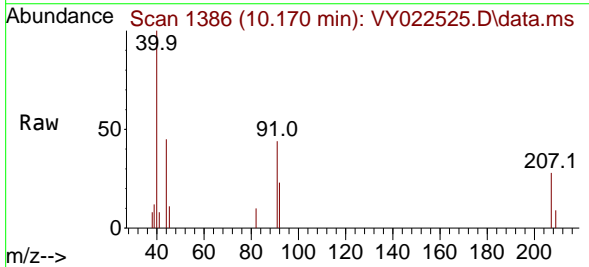
Instrument : MSVOA_Y
 ClientSampleId : B28-SOIL-SAMPLE

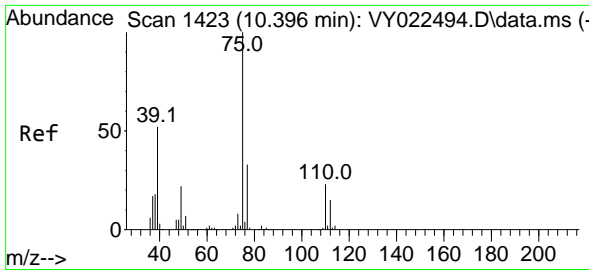
Tgt Ion: 43 Resp: 40
 Ion Ratio Lower Upper
 43 100
 58 0.0 30.4 45.6#



#52
 Toluene
 Concen: 7.539 ug/l
 RT: 10.170 min Scan# 1386
 Delta R.T. -0.006 min
 Lab File: VY022525.D
 Acq: 03 Jun 2025 16:11

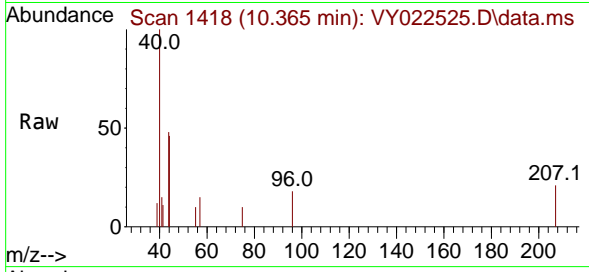
Tgt Ion: 92 Resp: 170
 Ion Ratio Lower Upper
 92 100
 91 254.1 139.0 208.4#



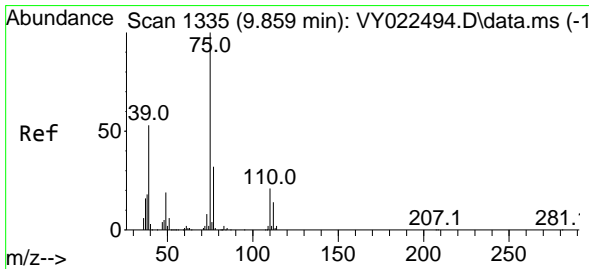
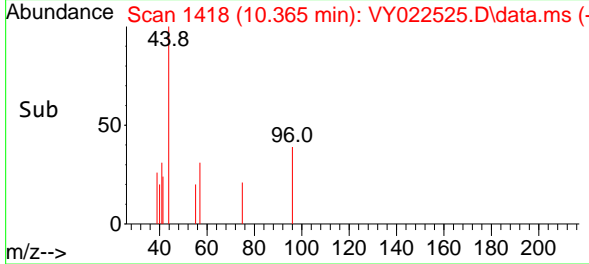
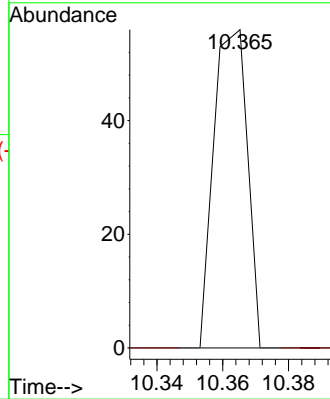


#53
 t-1,3-Dichloropropene
 Concen: 3.529 ug/l
 RT: 10.365 min Scan# 1423
 Delta R.T. -0.031 min
 Lab File: VY022525.D
 Acq: 03 Jun 2025 16:11

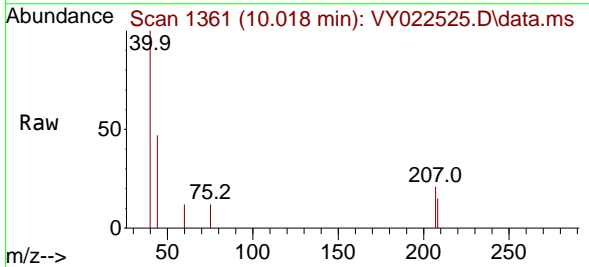
Instrument : MSVOA_Y
 ClientSampleId : B28-SOIL-SAMPLE



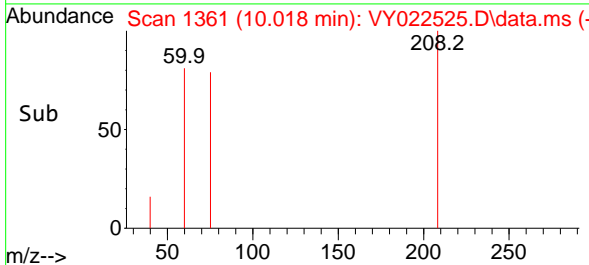
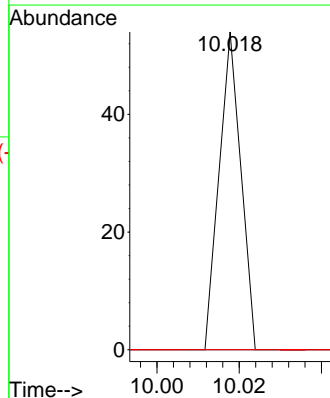
Tgt Ion: 75 Resp: 40
 Ion Ratio Lower Upper
 75 100
 77 0.0 26.5 39.7#

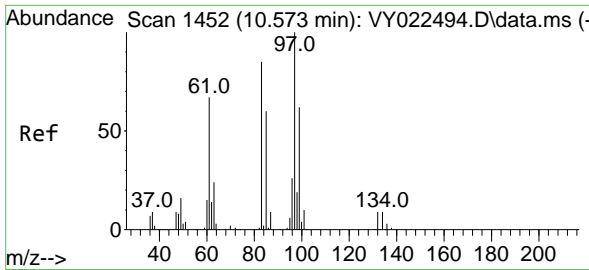


#54
 cis-1,3-Dichloropropene
 Concen: 1.516 ug/l
 RT: 10.018 min Scan# 1361
 Delta R.T. 0.158 min
 Lab File: VY022525.D
 Acq: 03 Jun 2025 16:11



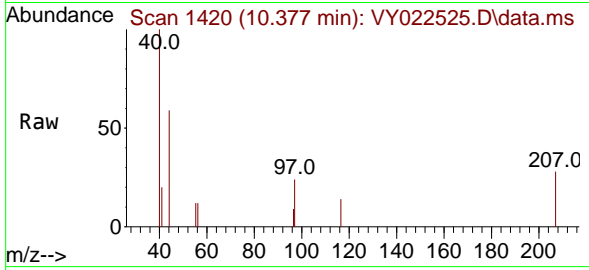
Tgt Ion: 75 Resp: 20
 Ion Ratio Lower Upper
 75 100
 77 0.0 25.3 37.9#
 39 0.0 42.7 64.1#





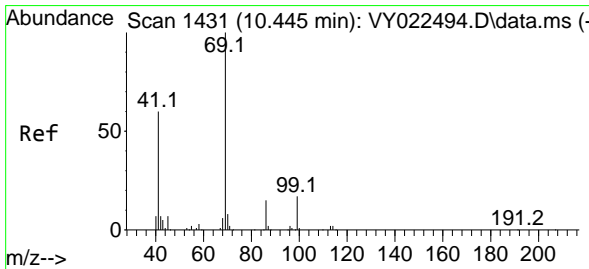
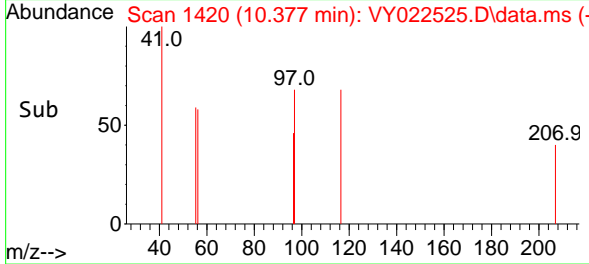
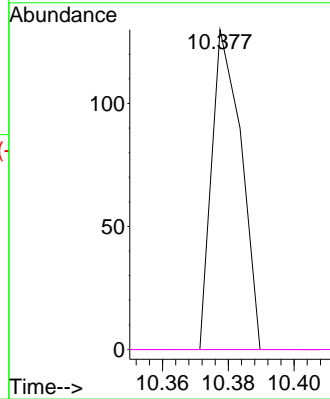
#55
 1,1,2-Trichloroethane
 Concen: 13.151 ug/l
 RT: 10.377 min Scan# 1420
 Delta R.T. -0.195 min
 Lab File: VY022525.D
 Acq: 03 Jun 2025 16:11

Instrument :
 MSVOA_Y
 ClientSampleId :
 B28-SOIL-SAMPLE



Tgt Ion: 97 Resp: 80

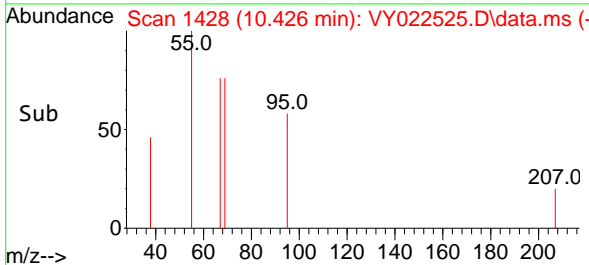
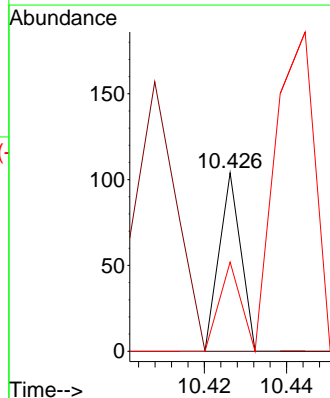
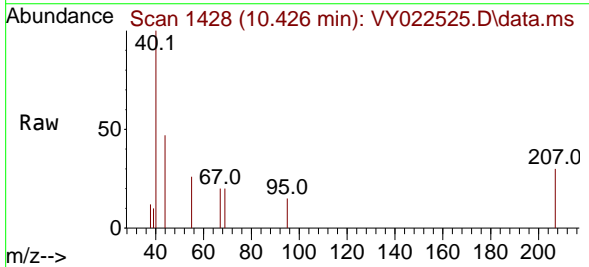
Ion	Ratio	Lower	Upper
97	100		
83	0.0	68.1	102.1#
85	0.0	48.2	72.2#
99	0.0	49.5	74.3#

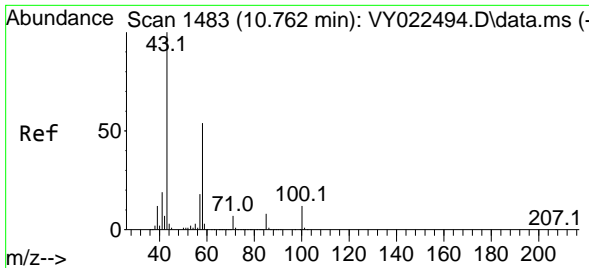


#56
 Ethyl methacrylate
 Concen: 4.322 ug/l
 RT: 10.426 min Scan# 1428
 Delta R.T. -0.018 min
 Lab File: VY022525.D
 Acq: 03 Jun 2025 16:11

Tgt Ion: 69 Resp: 38

Ion	Ratio	Lower	Upper
69	100		
41	0.0	52.2	78.2#
39	373.7	36.7	55.1#

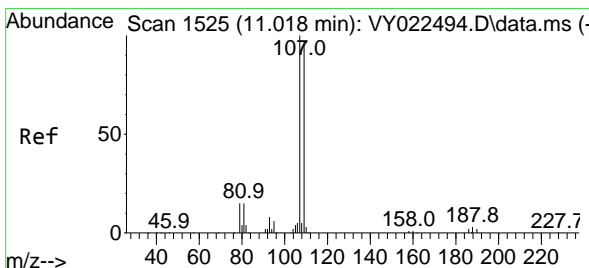
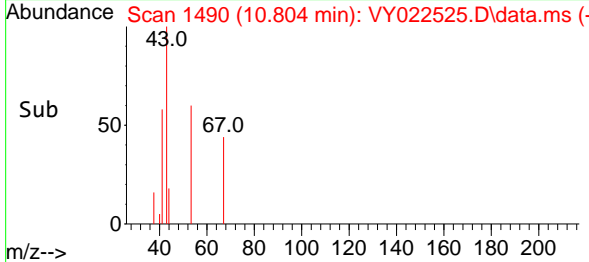
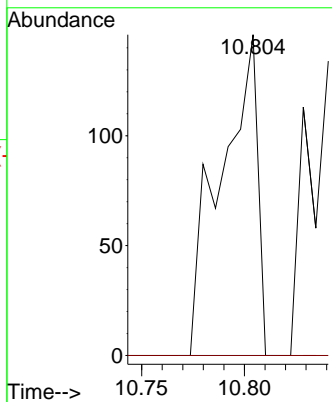
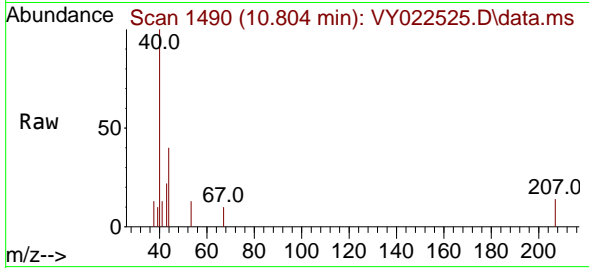




#59
 2-Hexanone
 Concen: 46.652 ug/l
 RT: 10.804 min Scan# 14
 Delta R.T. 0.043 min
 Lab File: VY022525.D
 Acq: 03 Jun 2025 16:11

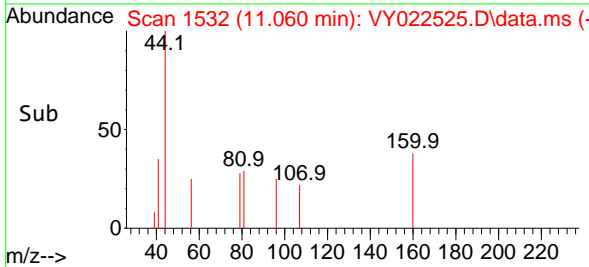
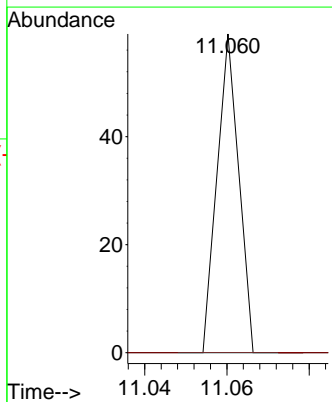
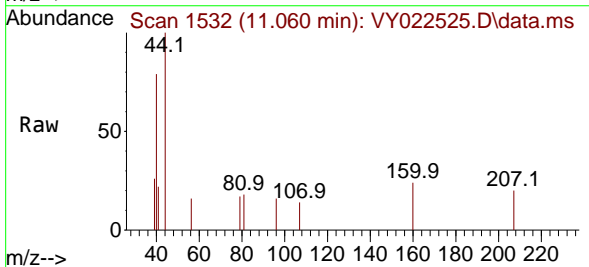
Instrument : MSVOA_Y
 ClientSampleId : B28-SOIL-SAMPLE

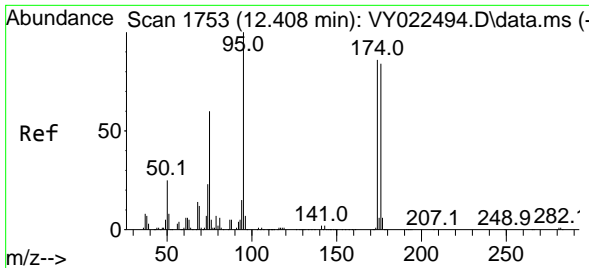
Tgt Ion: 43 Resp: 182
 Ion Ratio Lower Upper
 43 100
 58 0.0 27.3 81.8#



#61
 1,2-Dibromoethane
 Concen: 3.968 ug/l
 RT: 11.060 min Scan# 1532
 Delta R.T. 0.043 min
 Lab File: VY022525.D
 Acq: 03 Jun 2025 16:11

Tgt Ion: 107 Resp: 22
 Ion Ratio Lower Upper
 107 100
 109 0.0 77.7 116.5#

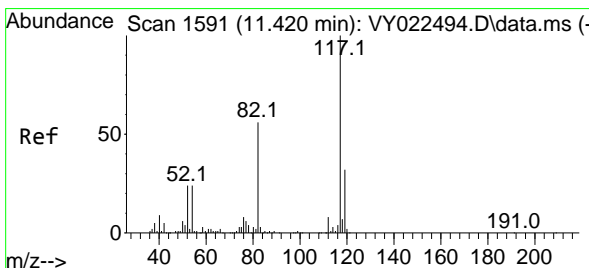
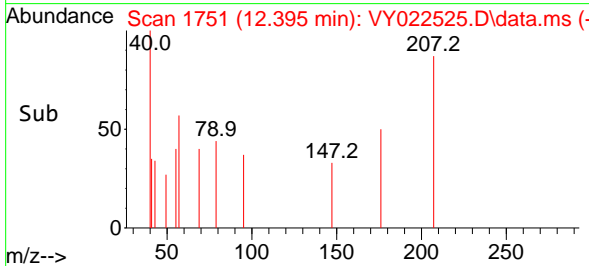
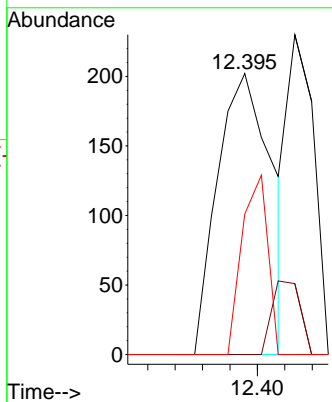
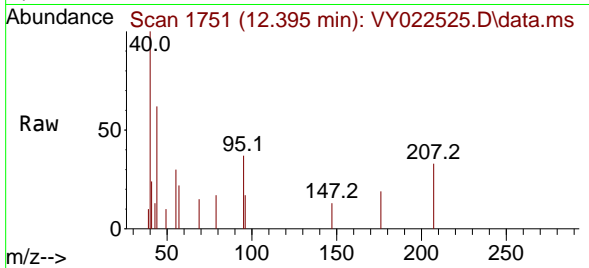




#62
 4-Bromofluorobenzene
 Concen: 30.851 ug/l
 RT: 12.395 min Scan# 1751
 Delta R.T. -0.012 min
 Lab File: VY022525.D
 Acq: 03 Jun 2025 16:11

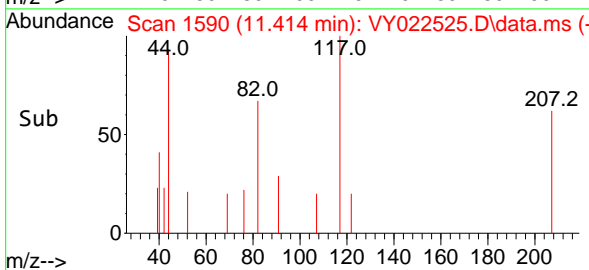
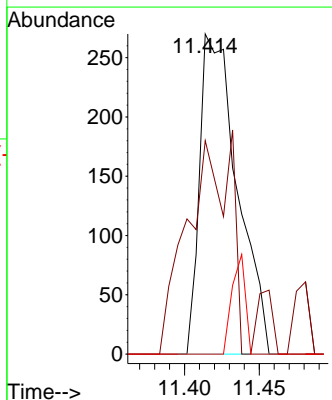
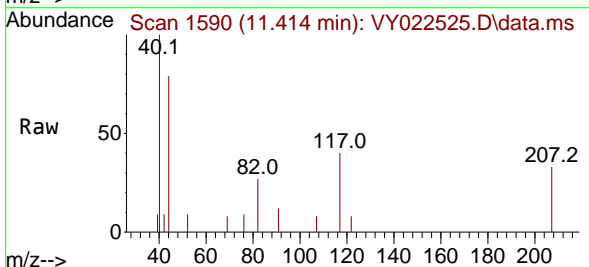
Instrument : MSVOA_Y
 ClientSampleId : B28-SOIL-SAMPLE

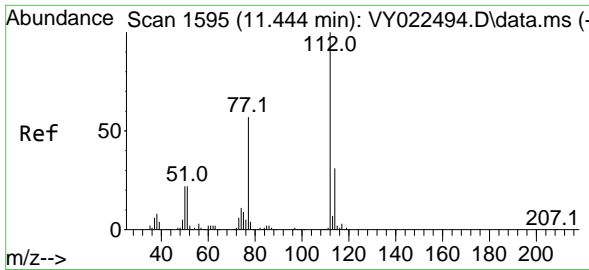
Tgt Ion	Resp	Lower	Upper
95	100		
174	13.7	0.0	170.0
176	30.2	0.0	166.2



#63
 Chlorobenzene-d5
 Concen: 50.000 ug/l
 RT: 11.414 min Scan# 1590
 Delta R.T. -0.006 min
 Lab File: VY022525.D
 Acq: 03 Jun 2025 16:11

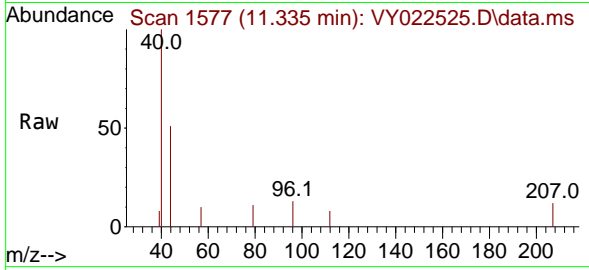
Tgt Ion	Resp	Lower	Upper
117	100		
82	66.7	44.6	66.8
119	0.0	25.4	38.0



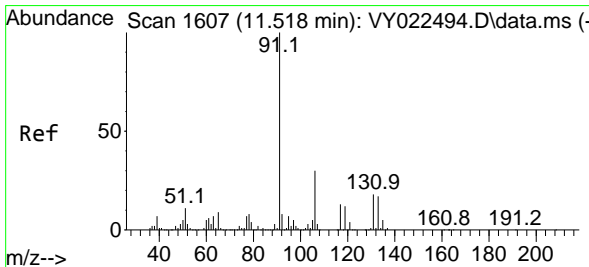
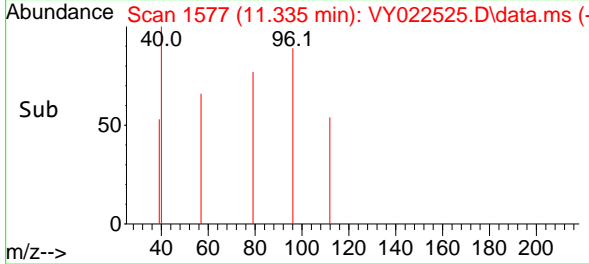
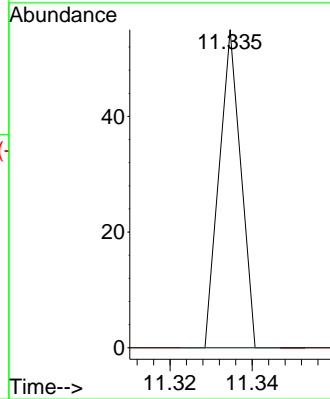


#65
 Chlorobenzene
 Concen: 1.915 ug/l
 RT: 11.335 min Scan# 11
 Delta R.T. -0.110 min
 Lab File: VY022525.D
 Acq: 03 Jun 2025 16:11

Instrument : MSVOA_Y
 ClientSampleId : B28-SOIL-SAMPLE

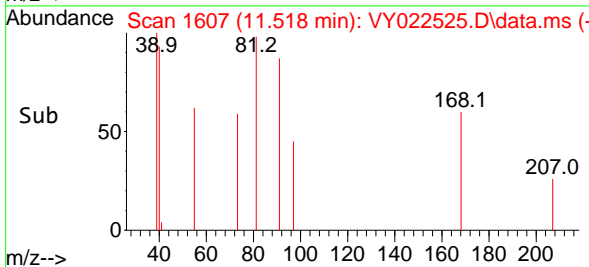
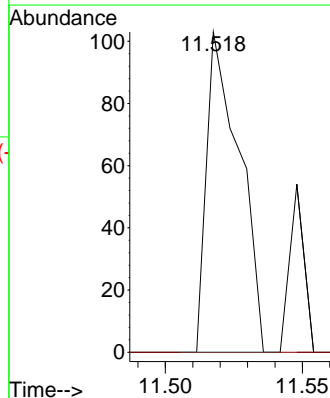
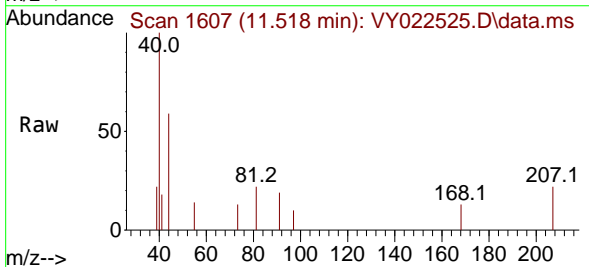


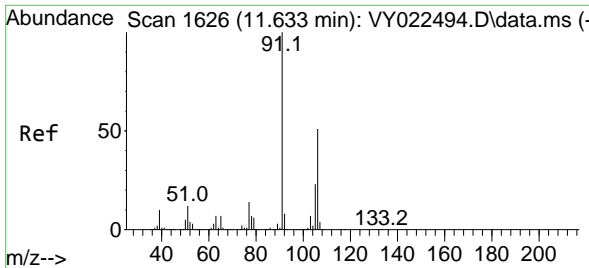
Tgt Ion:112 Resp: 20
 Ion Ratio Lower Upper
 112 100
 114 0.0 25.0 37.6#



#67
 Ethyl Benzene
 Concen: 4.439 ug/l
 RT: 11.518 min Scan# 1607
 Delta R.T. -0.000 min
 Lab File: VY022525.D
 Acq: 03 Jun 2025 16:11

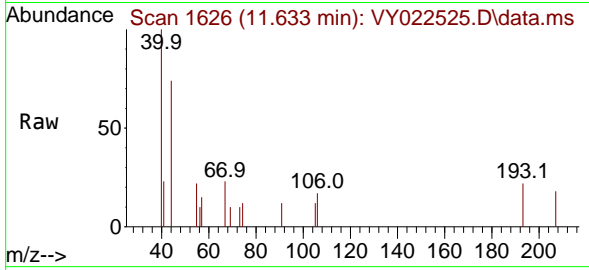
Tgt Ion: 91 Resp: 86
 Ion Ratio Lower Upper
 91 100
 106 0.0 24.2 36.4#



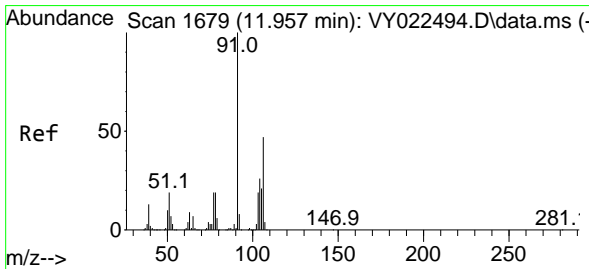
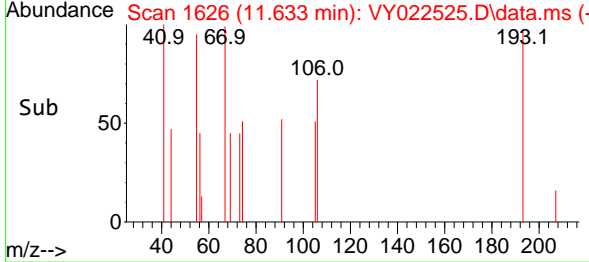
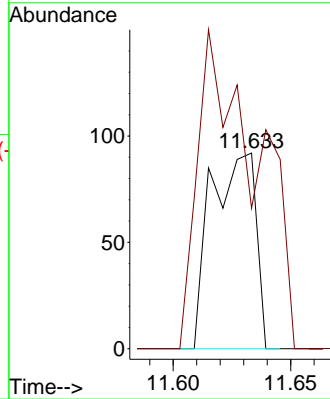


#68
 m/p-Xylenes
 Concen: 16.476 ug/l
 RT: 11.633 min Scan# 11
 Delta R.T. -0.000 min
 Lab File: VY022525.D
 Acq: 03 Jun 2025 16:11

Instrument :
 MSVOA_Y
 ClientSampleId :
 B28-SOIL-SAMPLE

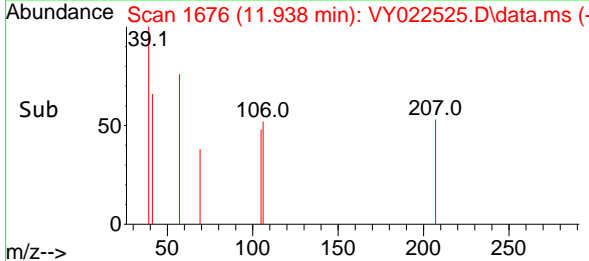
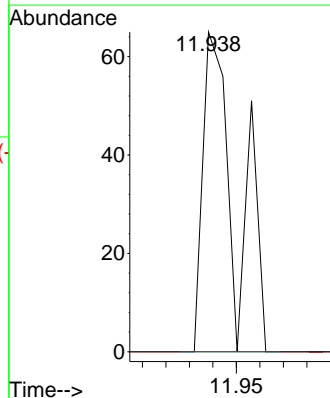
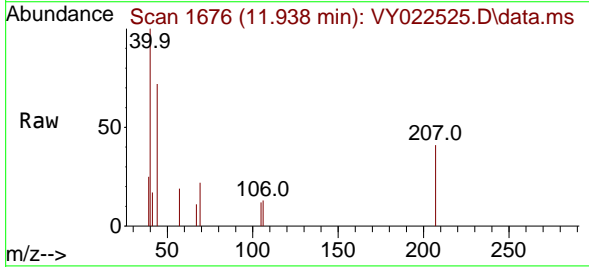


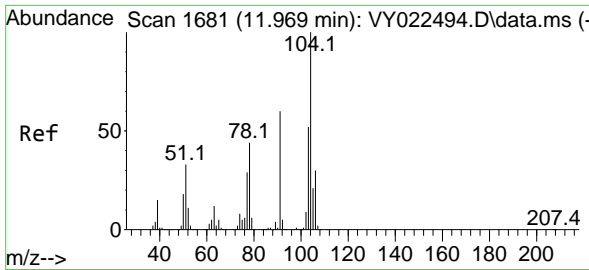
Tgt Ion:106 Resp: 121
 Ion Ratio Lower Upper
 106 100
 91 214.0 159.4 239.0



#69
 o-Xylene
 Concen: 9.150 ug/l
 RT: 11.938 min Scan# 1676
 Delta R.T. -0.018 min
 Lab File: VY022525.D
 Acq: 03 Jun 2025 16:11

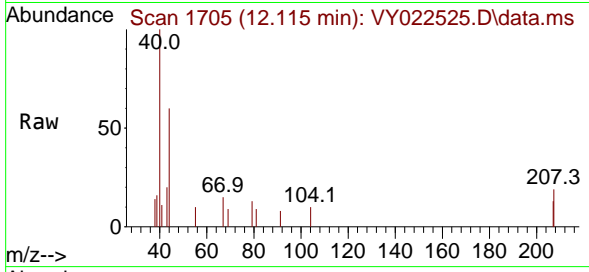
Tgt Ion:106 Resp: 63
 Ion Ratio Lower Upper
 106 100
 91 0.0 105.8 317.3#



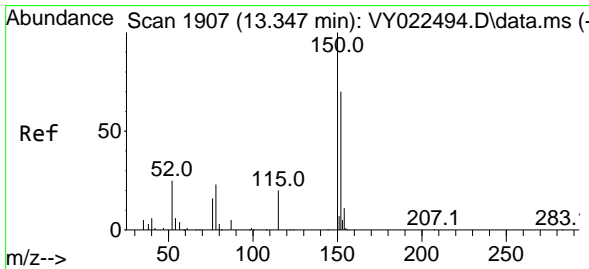
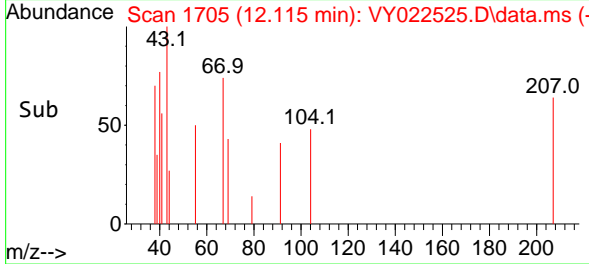
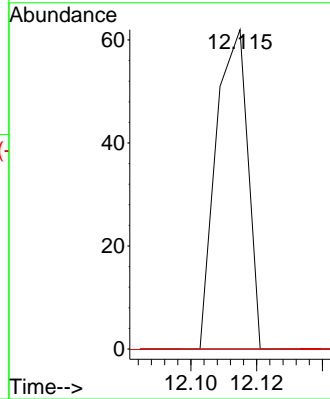


#70
 Styrene
 Concen: 3.602 ug/l
 RT: 12.115 min Scan# 11
 Delta R.T. 0.146 min
 Lab File: VY022525.D
 Acq: 03 Jun 2025 16:11

Instrument : MSVOA_Y
 ClientSampleId : B28-SOIL-SAMPLE

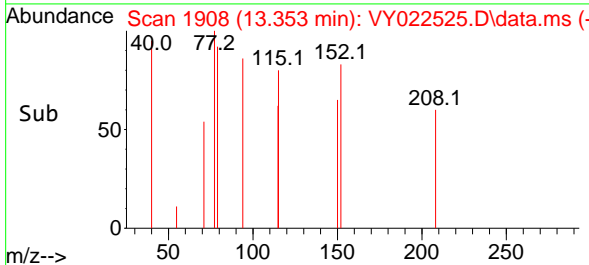
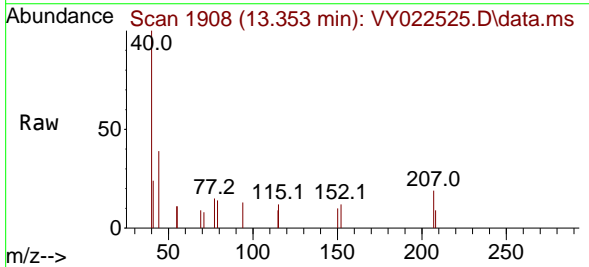
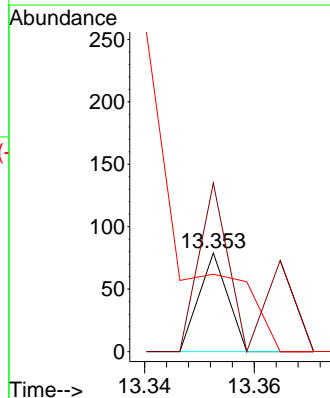


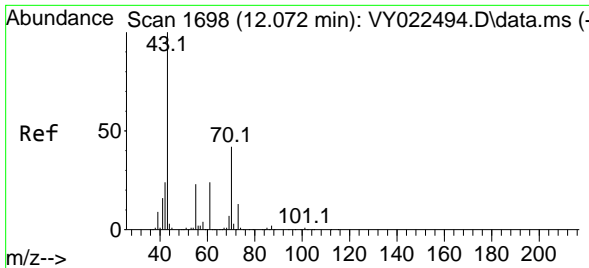
Tgt Ion:104 Resp: 41
 Ion Ratio Lower Upper
 104 100
 78 0.0 39.5 59.3#
 103 0.0 44.1 66.1#



#72
 1,4-Dichlorobenzene-d4
 Concen: 50.000 ug/l
 RT: 13.353 min Scan# 1908
 Delta R.T. 0.006 min
 Lab File: VY022525.D
 Acq: 03 Jun 2025 16:11

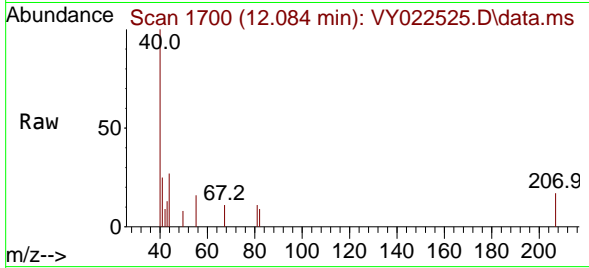
Tgt Ion:152 Resp: 29
 Ion Ratio Lower Upper
 152 100
 115 262.1 28.9 86.7#
 150 0.0 0.0 349.6





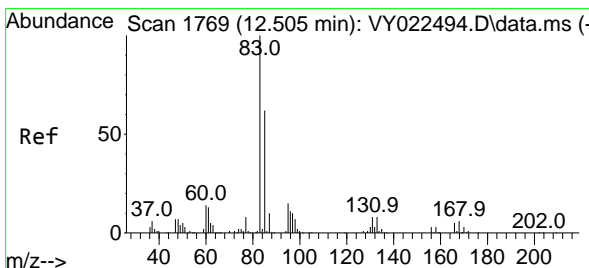
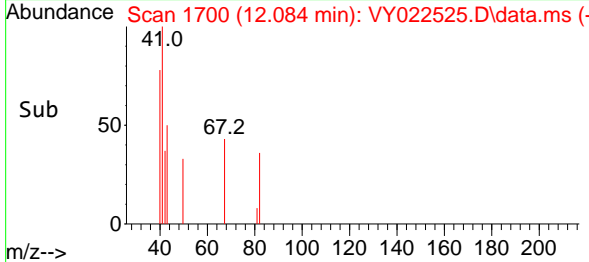
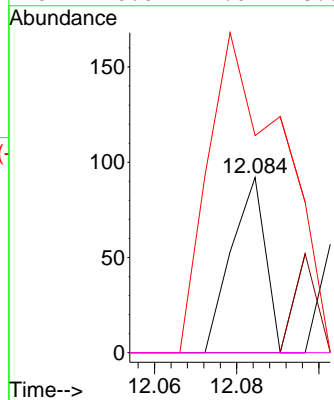
#74
 N-amy1 acetate
 Concen: 88.223 ug/l
 RT: 12.084 min Scan# 11
 Delta R.T. 0.012 min
 Lab File: VY022525.D
 Acq: 03 Jun 2025 16:11

Instrument :
 MSVOA_Y
 ClientSampleId :
 B28-SOIL-SAMPLE



Tgt Ion: 43 Resp: 53

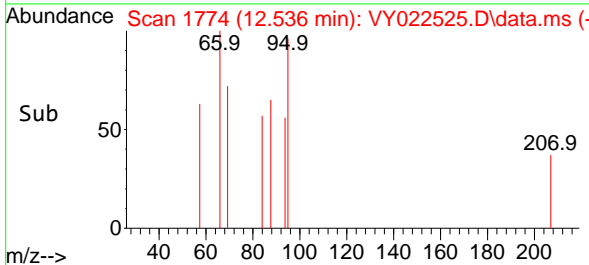
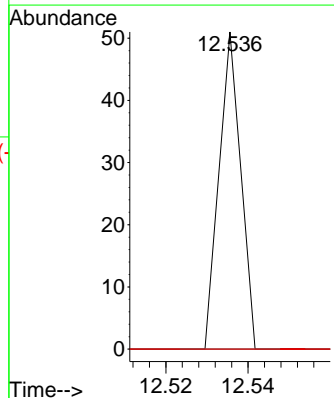
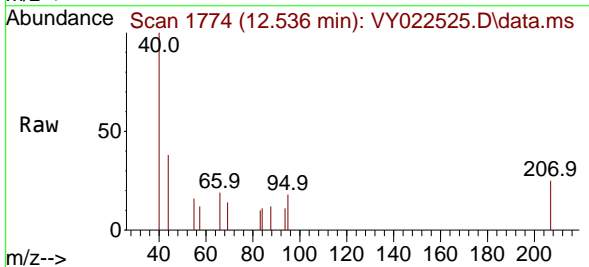
Ion	Ratio	Lower	Upper
43	100		
70	0.0	34.2	51.2#
55	398.1	18.2	27.4#
61	0.0	19.0	28.6#

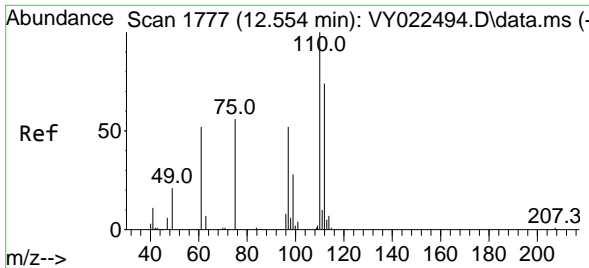


#75
 1,1,2,2-Tetrachloroethane
 Concen: 48.623 ug/l
 RT: 12.536 min Scan# 1774
 Delta R.T. 0.030 min
 Lab File: VY022525.D
 Acq: 03 Jun 2025 16:11

Tgt Ion: 83 Resp: 19

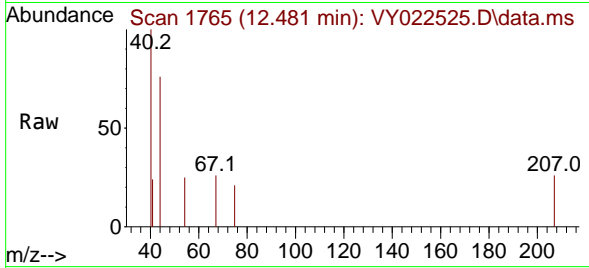
Ion	Ratio	Lower	Upper
83	100		
131	0.0	4.9	14.7#
85	0.0	32.6	97.8#



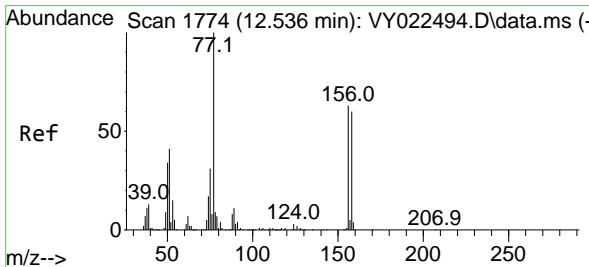
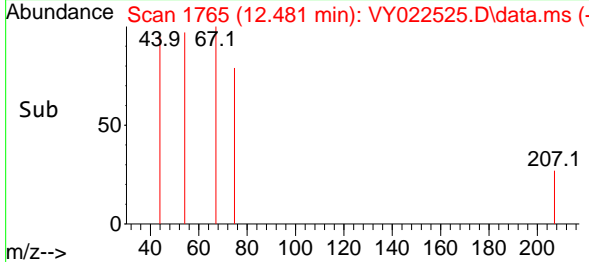
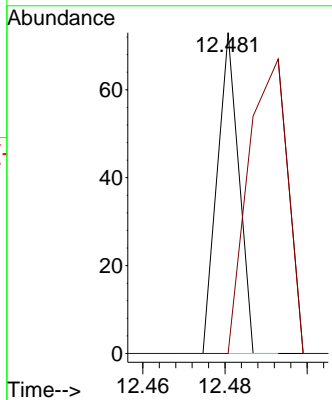


#76
 1,2,3-Trichloropropane
 Concen: 81.382 ug/l
 RT: 12.481 min Scan# 1765
 Delta R.T. -0.073 min
 Lab File: VY022525.D
 Acq: 03 Jun 2025 16:11

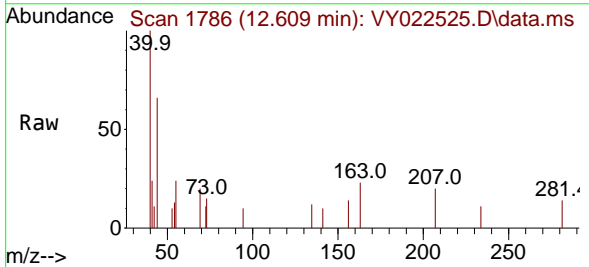
Instrument : MSVOA_Y
 ClientSampleId : B28-SOIL-SAMPLE



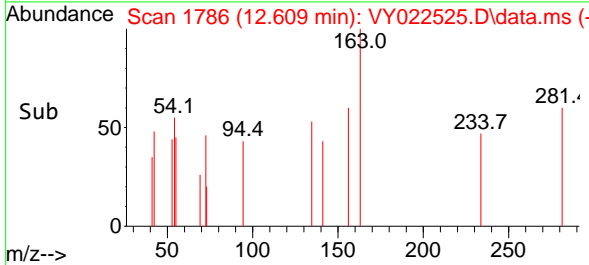
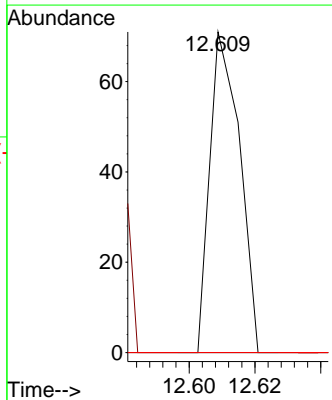
Tgt Ion: 75 Resp: 27
 Ion Ratio Lower Upper
 75 100
 77 163.0 0.0 0.0#

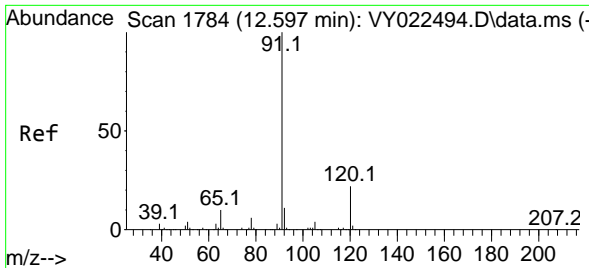


#77
 Bromobenzene
 Concen: 89.565 ug/l
 RT: 12.609 min Scan# 1786
 Delta R.T. 0.073 min
 Lab File: VY022525.D
 Acq: 03 Jun 2025 16:11



Tgt Ion: 156 Resp: 45
 Ion Ratio Lower Upper
 156 100
 77 0.0 94.0 282.1#
 158 0.0 48.2 144.6#

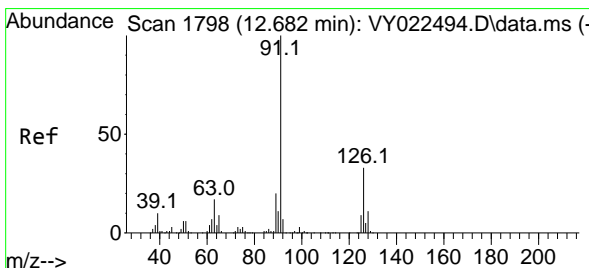
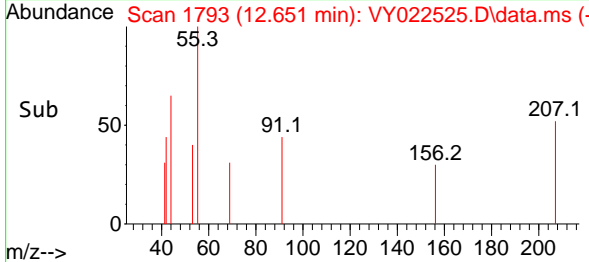
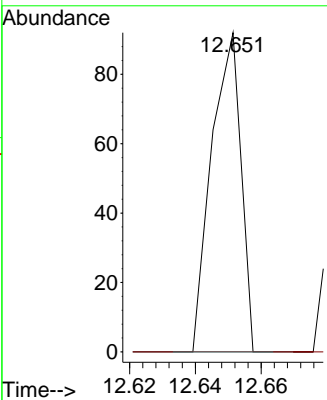
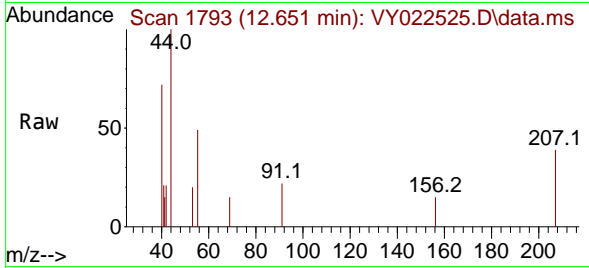




#78
 n-propylbenzene
 Concen: 19.601 ug/l
 RT: 12.651 min Scan# 1793
 Delta R.T. 0.055 min
 Lab File: VY022525.D
 Acq: 03 Jun 2025 16:11

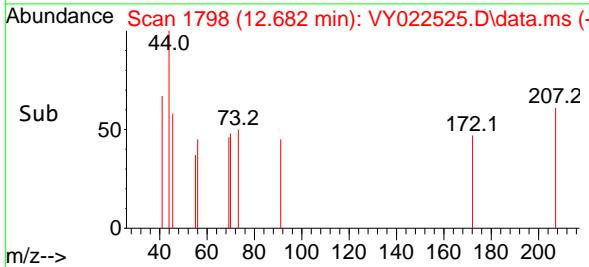
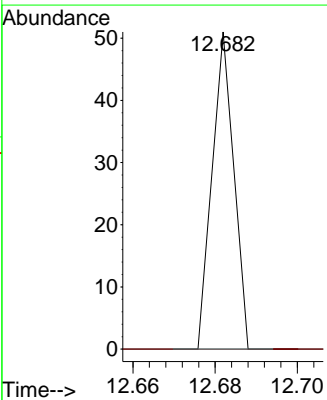
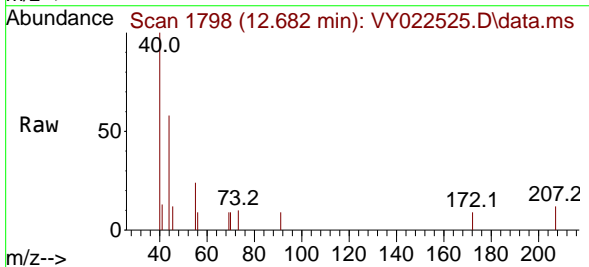
Instrument : MSVOA_Y
 ClientSampleId : B28-SOIL-SAMPLE

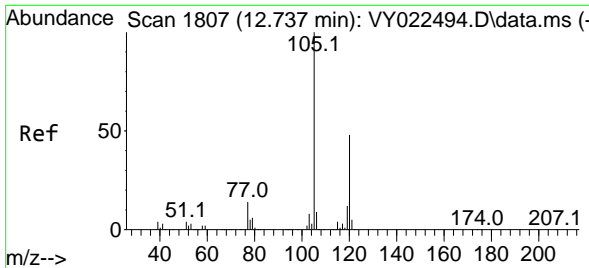
Tgt Ion: 91 Resp: 57
 Ion Ratio Lower Upper
 91 100
 120 0.0 10.8 32.4#



#79
 2-Chlorotoluene
 Concen: 12.328 ug/l
 RT: 12.682 min Scan# 1798
 Delta R.T. -0.000 min
 Lab File: VY022525.D
 Acq: 03 Jun 2025 16:11

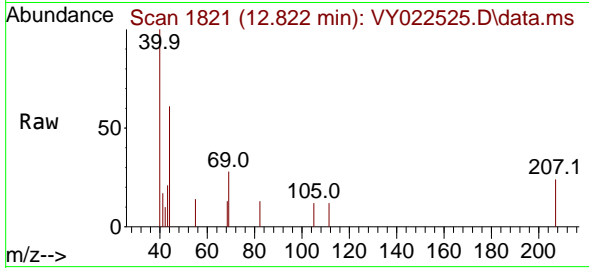
Tgt Ion: 91 Resp: 19
 Ion Ratio Lower Upper
 91 100
 126 0.0 17.0 51.0#



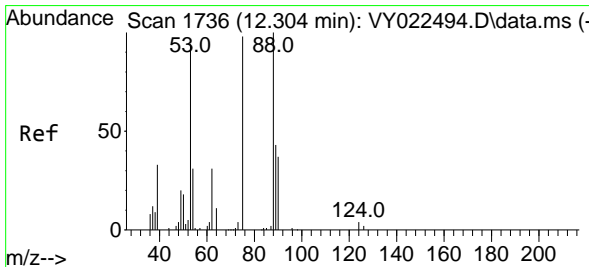
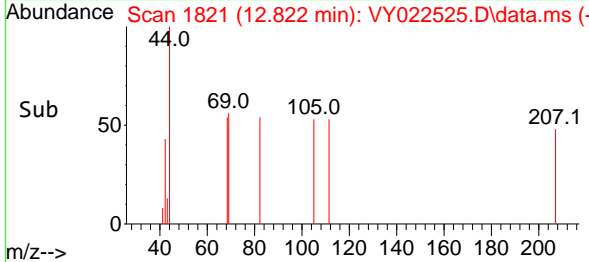
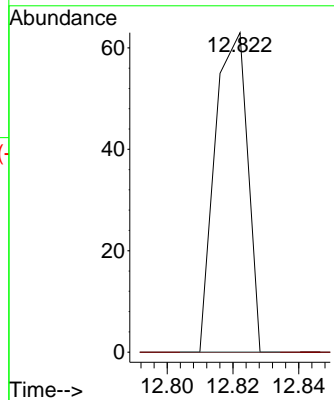


#80
 1,3,5-Trimethylbenzene
 Concen: 23.004 ug/l
 RT: 12.822 min Scan# 11
 Delta R.T. 0.085 min
 Lab File: VY022525.D
 Acq: 03 Jun 2025 16:11

Instrument :
 MSVOA_Y
 ClientSampleId :
 B28-SOIL-SAMPLE

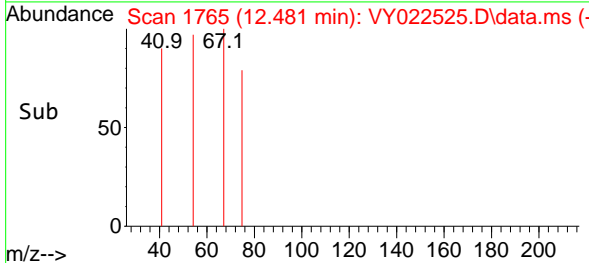
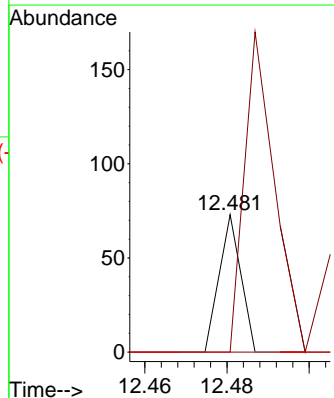
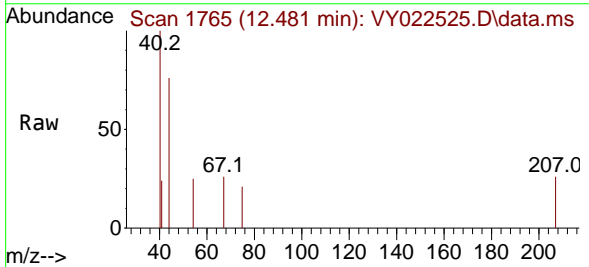


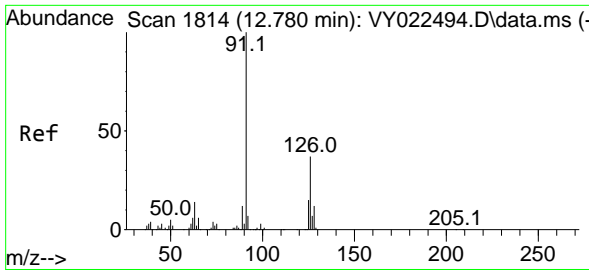
Tgt Ion:105 Resp: 43
 Ion Ratio Lower Upper
 105 100
 120 0.0 24.1 72.4#



#81
 trans-1,4-Dichloro-2-butene
 Concen: 196.531 ug/l
 RT: 12.481 min Scan# 1765
 Delta R.T. 0.177 min
 Lab File: VY022525.D
 Acq: 03 Jun 2025 16:11

Tgt Ion: 75 Resp: 27
 Ion Ratio Lower Upper
 75 100
 53 392.6 78.5 117.7#
 89 0.0 35.7 53.5#

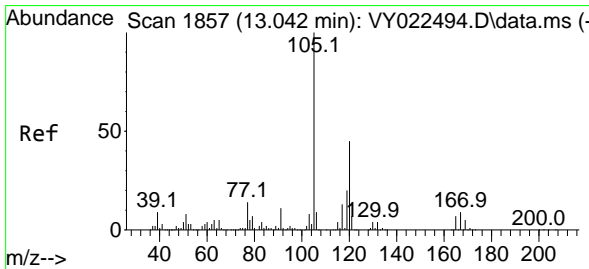
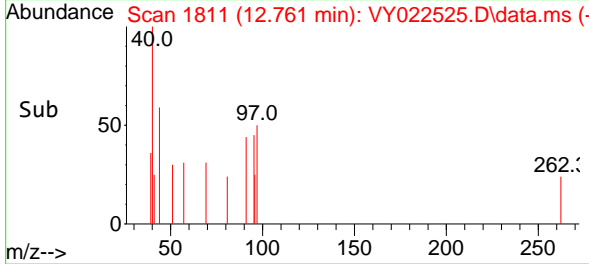
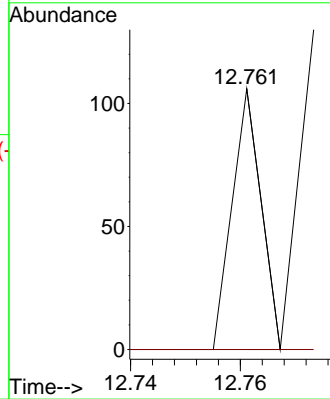
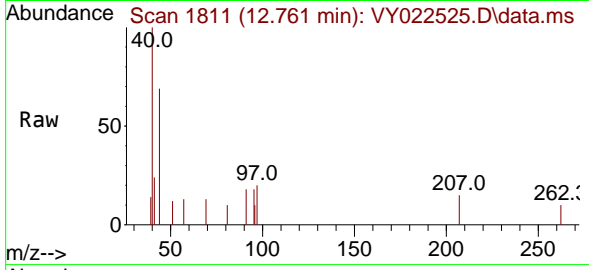




#82
 4-Chlorotoluene
 Concen: 24.529 ug/l
 RT: 12.761 min Scan# 1811
 Delta R.T. -0.018 min
 Lab File: VY022525.D
 Acq: 03 Jun 2025 16:11

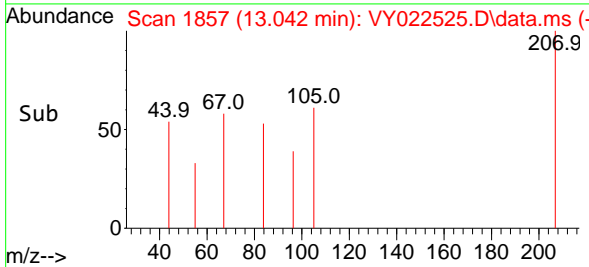
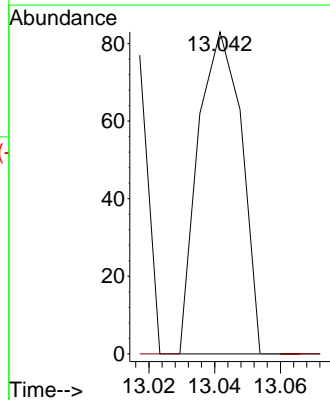
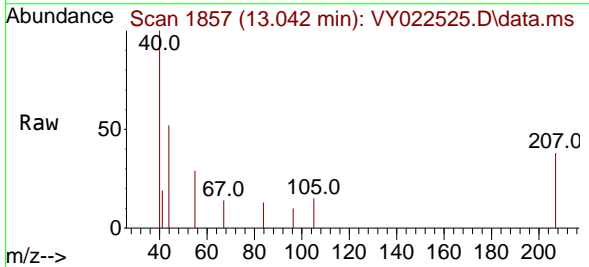
Instrument : MSVOA_Y
 ClientSampleId : B28-SOIL-SAMPLE

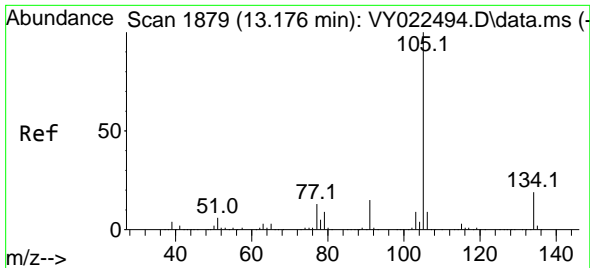
Tgt Ion: 91 Resp: 39
 Ion Ratio Lower Upper
 91 100
 126 0.0 17.0 50.9#



#84
 1,2,4-Trimethylbenzene
 Concen: 40.652 ug/l
 RT: 13.042 min Scan# 1857
 Delta R.T. -0.000 min
 Lab File: VY022525.D
 Acq: 03 Jun 2025 16:11

Tgt Ion: 105 Resp: 76
 Ion Ratio Lower Upper
 105 100
 120 0.0 22.7 68.1#

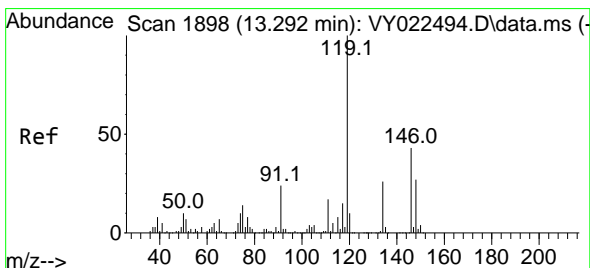
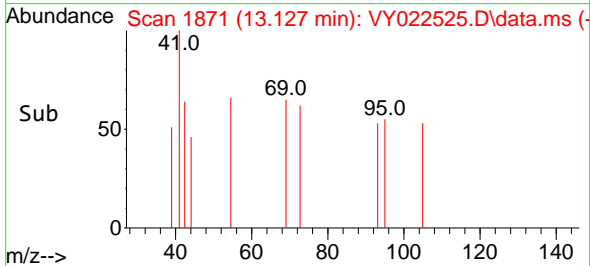
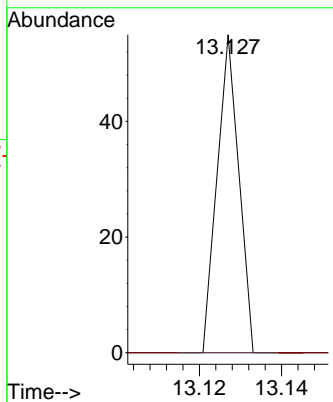
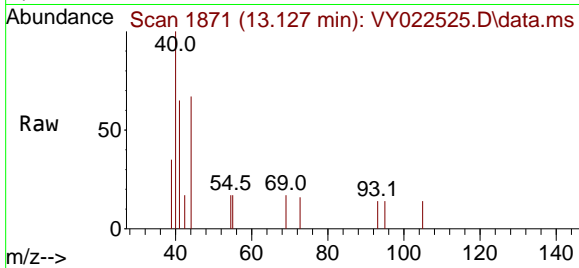




#85
 sec-Butylbenzene
 Concen: 7.784 ug/l
 RT: 13.127 min Scan# 1111
 Delta R.T. -0.049 min
 Lab File: VY022525.D
 Acq: 03 Jun 2025 16:11

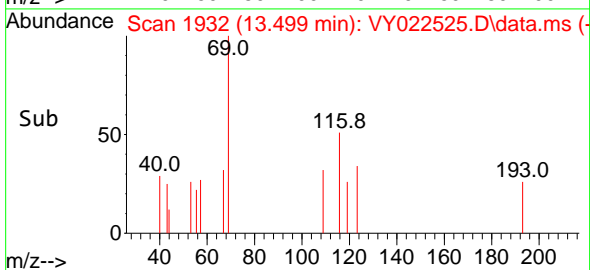
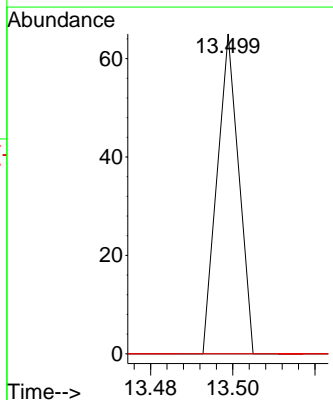
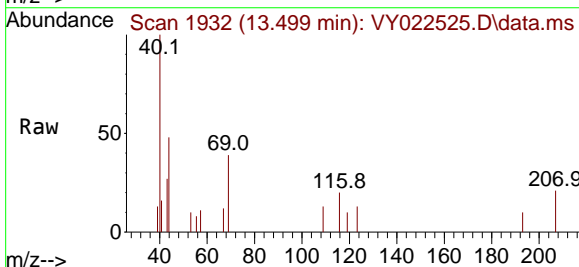
Instrument : MSVOA_Y
 ClientSampleId : B28-SOIL-SAMPLE

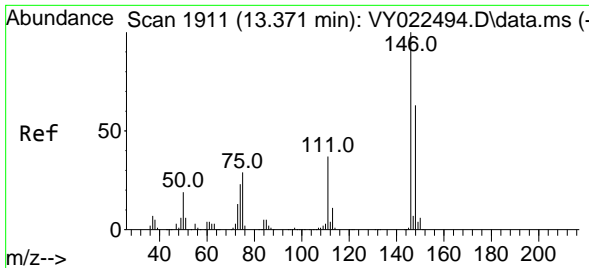
Tgt Ion	Resp	Lower	Upper
105	100		
134	0.0	9.7	28.9#



#86
 p-Isopropyltoluene
 Concen: 11.332 ug/l
 RT: 13.499 min Scan# 1932
 Delta R.T. 0.207 min
 Lab File: VY022525.D
 Acq: 03 Jun 2025 16:11

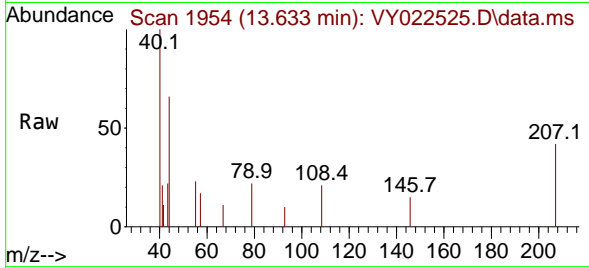
Tgt Ion	Resp	Lower	Upper
119	100		
134	0.0	13.1	39.1#
91	0.0	11.6	34.8#



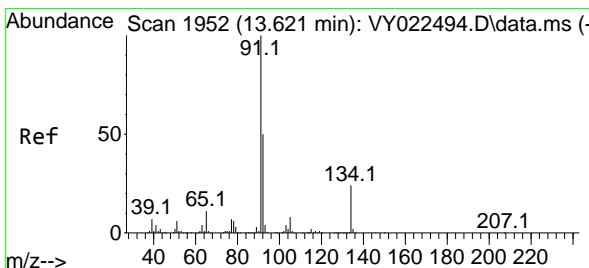
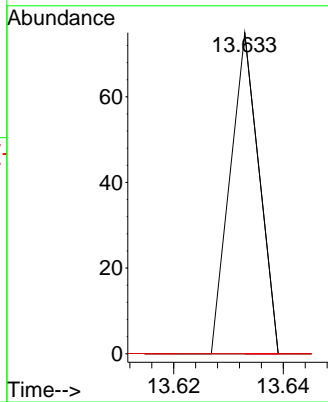
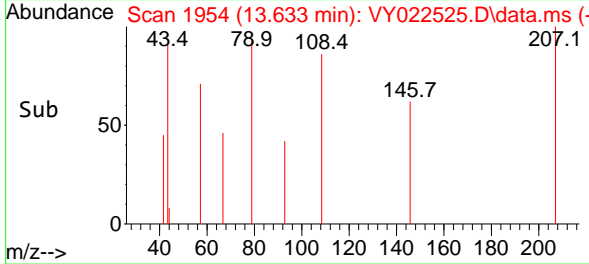


#88
 1,4-Dichlorobenzene
 Concen: 27.346 ug/l
 RT: 13.633 min Scan# 1954
 Delta R.T. 0.262 min
 Lab File: VY022525.D
 Acq: 03 Jun 2025 16:11

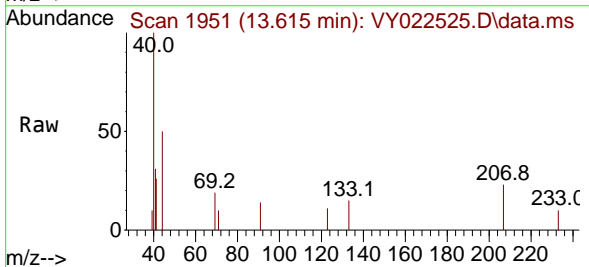
Instrument : MSVOA_Y
 ClientSampleId : B28-SOIL-SAMPLE



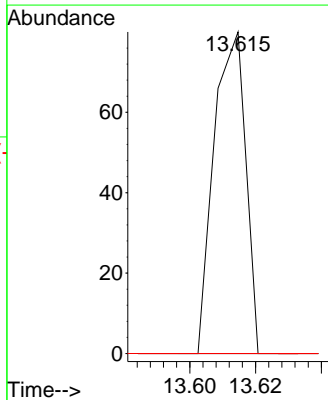
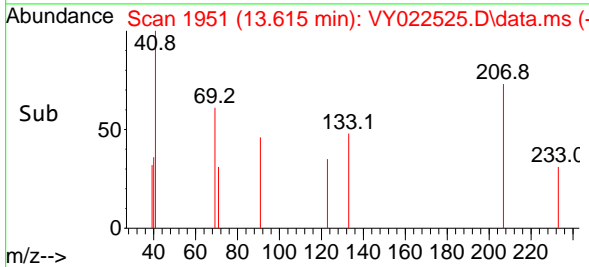
Tgt Ion:146 Resp: 27
 Ion Ratio Lower Upper
 146 100
 111 0.0 19.4 58.2#
 148 0.0 31.6 94.8#

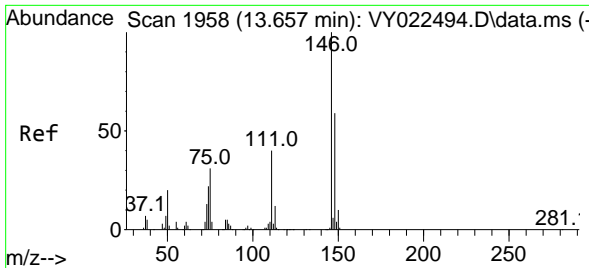


#89
 n-Butylbenzene
 Concen: 26.376 ug/l
 RT: 13.615 min Scan# 1951
 Delta R.T. -0.006 min
 Lab File: VY022525.D
 Acq: 03 Jun 2025 16:11



Tgt Ion: 91 Resp: 53
 Ion Ratio Lower Upper
 91 100
 92 0.0 25.9 77.8#
 134 0.0 12.0 36.1#

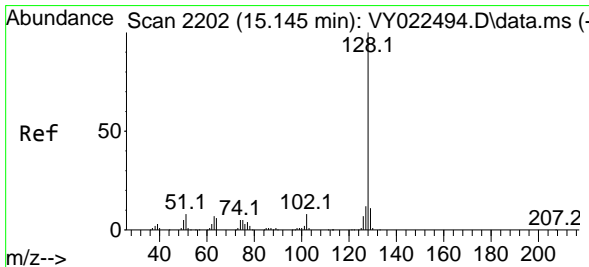
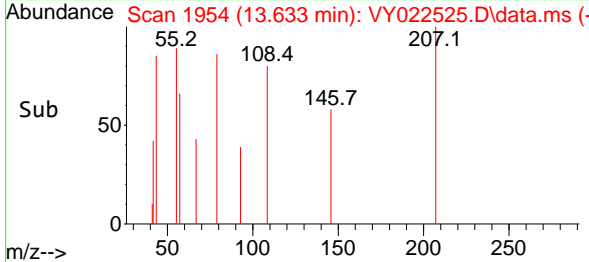
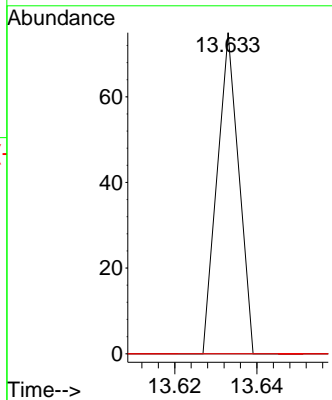
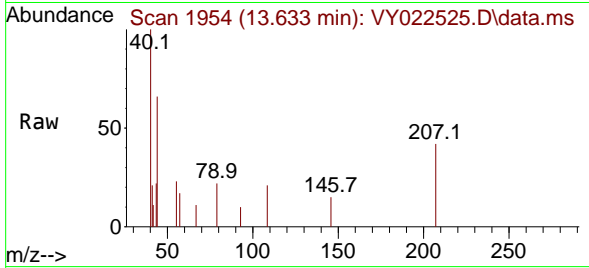




#91
 1,2-Dichlorobenzene
 Concen: 31.240 ug/l
 RT: 13.633 min Scan# 1954
 Delta R.T. -0.025 min
 Lab File: VY022525.D
 Acq: 03 Jun 2025 16:11

Instrument : MSVOA_Y
 ClientSampleId : B28-SOIL-SAMPLE

Tgt Ion	Resp	Lower	Upper
146	100		
111	0.0	20.2	60.6#
148	0.0	31.4	94.0#



#95
 Naphthalene
 Concen: 291.850 ug/l
 RT: 15.145 min Scan# 2202
 Delta R.T. -0.000 min
 Lab File: VY022525.D
 Acq: 03 Jun 2025 16:11

Tgt Ion	Resp	Lower	Upper
128	100		
127	0.0	10.4	15.6#
129	0.0	8.9	13.3#

