

Data Path : Z:\voasrv\HPCHEM1\MSVOA_Y\Data\VY060625\
 Data File : VY022607.D
 Acq On : 06 Jun 2025 18:00
 Operator : SY/MD
 Sample : Q2218-01
 Misc : 5.08g/5.0mL/MSVOA_Y/SOIL/A
 ALS Vial : 22 Sample Multiplier: 1

Instrument :
 MSVOA_Y
 ClientSampleId :
 72-11934

Quant Time: Jun 06 23:46:55 2025
 Quant Method : Z:\voasrv\HPCHEM1\MSVOA_Y\methods\82Y060225S.M
 Quant Title : SW846 8260
 QLast Update : Tue Jun 03 03:22:04 2025
 Response via : Initial Calibration

Compound	R.T.	QIon	Response	Conc	Units	Dev(Min)

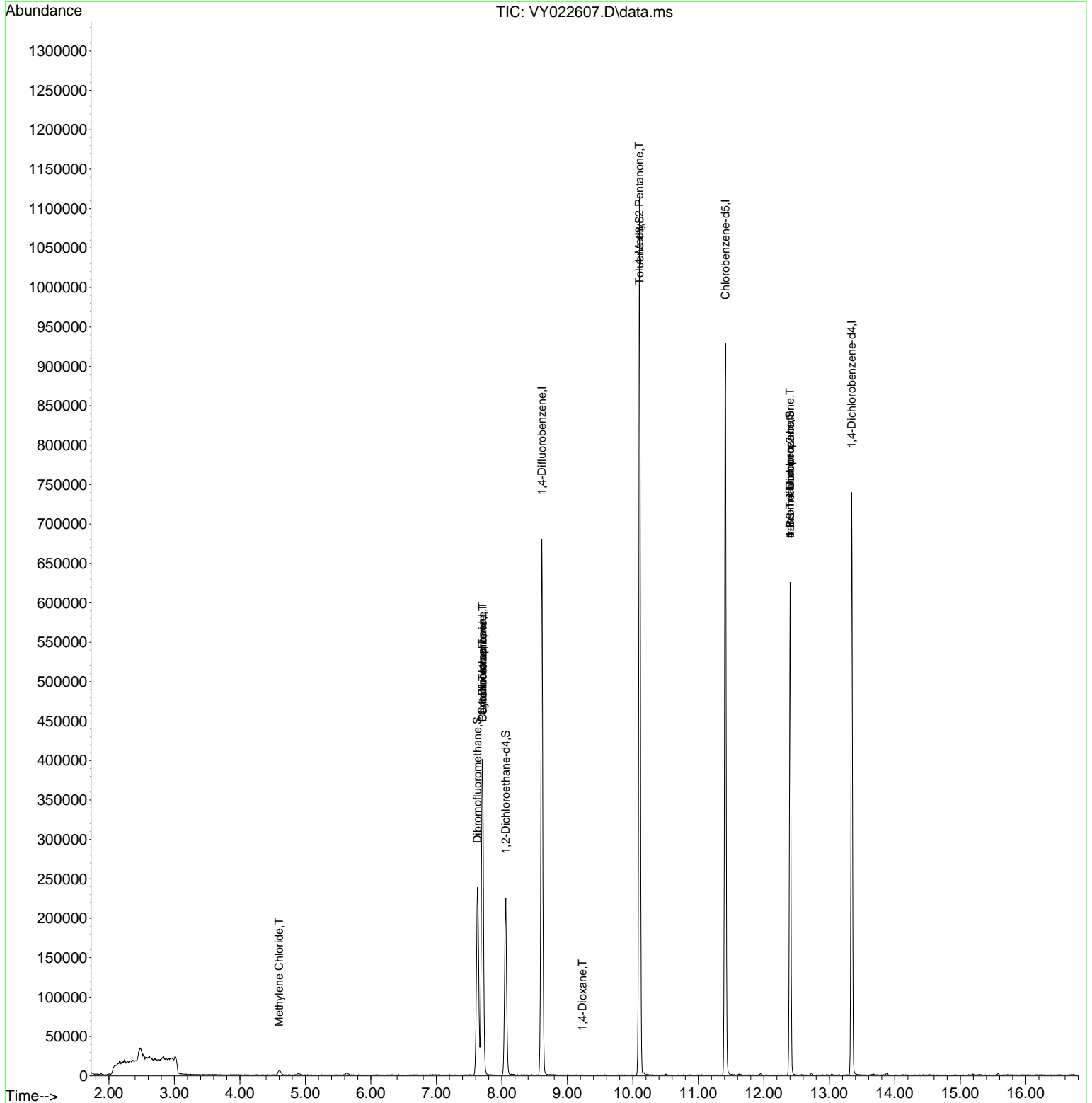
Internal Standards						
1) Pentafluorobenzene	7.707	168	298406	50.000	ug/l	0.00
34) 1,4-Difluorobenzene	8.609	114	546092	50.000	ug/l	0.00
63) Chlorobenzene-d5	11.414	117	448685	50.000	ug/l	0.00
72) 1,4-Dichlorobenzene-d4	13.340	152	169312	50.000	ug/l	0.00
System Monitoring Compounds						
33) 1,2-Dichloroethane-d4	8.061	65	160902	48.210	ug/l	0.00
Spiked Amount	50.000	Range	50 - 163	Recovery	=	96.420%
35) Dibromofluoromethane	7.628	113	162887	49.973	ug/l	-0.01
Spiked Amount	50.000	Range	54 - 147	Recovery	=	99.940%
50) Toluene-d8	10.103	98	668942	50.791	ug/l	0.00
Spiked Amount	50.000	Range	58 - 134	Recovery	=	101.580%
62) 4-Bromofluorobenzene	12.401	95	166579	42.450	ug/l	0.00
Spiked Amount	50.000	Range	30 - 143	Recovery	=	84.900%
Target Compounds						
					Qvalue	
20) Methylene Chloride	4.598	84	4277	1.111	ug/l	86
31) Cyclohexane	7.701	56	8518	1.328	ug/l #	37
36) 1,1-Dichloropropene	7.701	75	25972	4.909	ug/l #	51
38) Carbon Tetrachloride	7.707	117	30251	5.574	ug/l #	16
49) 1,4-Dioxane	9.231	88	27	1.097	ug/l #	24
51) 4-Methyl-2-Pentanone	10.097	43	3428	1.349	ug/l #	1
76) 1,2,3-Trichloropropane	12.401	75	99843	51.545	ug/l #	100
81) trans-1,4-Dichloro-2-b...	12.401	75	99843	124.479	ug/l #	10

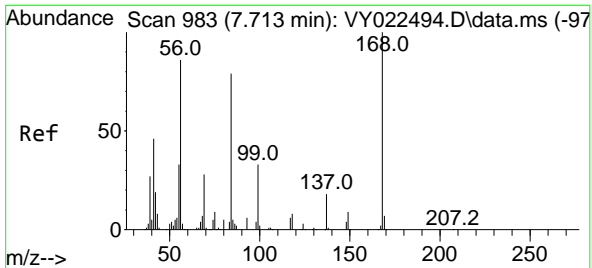
(#) = qualifier out of range (m) = manual integration (+) = signals summed

Data Path : Z:\voasrv\HPCHEM1\MSVOA_Y\Data\VY060625\
 Data File : VY022607.D
 Acq On : 06 Jun 2025 18:00
 Operator : SY/MD
 Sample : Q2218-01
 Misc : 5.08g/5.0mL/MSVOA_Y/SOIL/A
 ALS Vial : 22 Sample Multiplier: 1

Instrument :
 MSVOA_Y
 ClientSampleId :
 72-11934

Quant Time: Jun 06 23:46:55 2025
 Quant Method : Z:\voasrv\HPCHEM1\MSVOA_Y\methods\82Y060225S.M
 Quant Title : SW846 8260
 QLast Update : Tue Jun 03 03:22:04 2025
 Response via : Initial Calibration

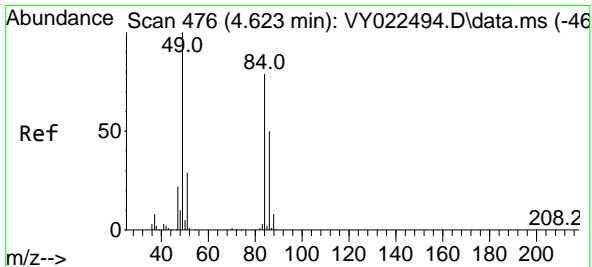
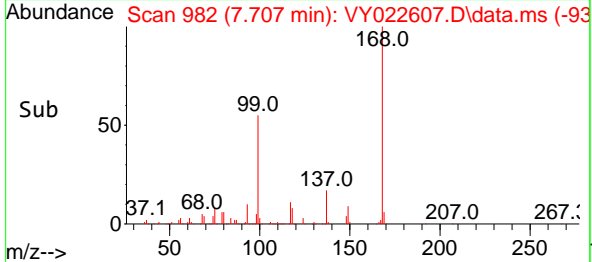
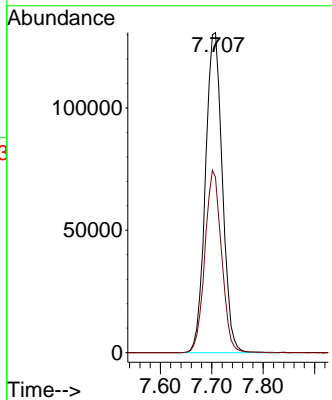
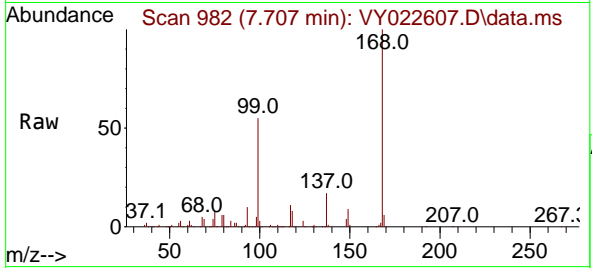




#1
 Pentafluorobenzene
 Concen: 50.000 ug/l
 RT: 7.707 min Scan# 91
 Delta R.T. -0.006 min
 Lab File: VY022607.D
 Acq: 06 Jun 2025 18:00

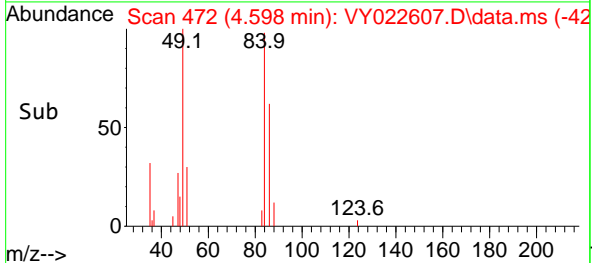
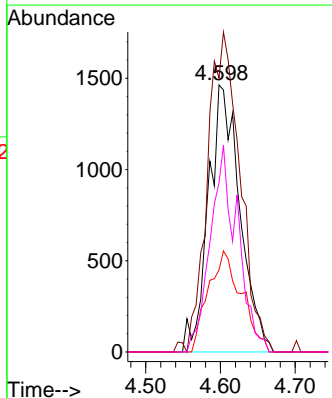
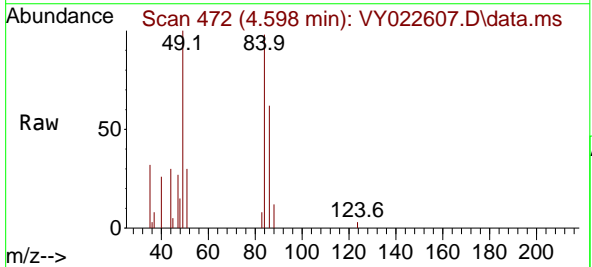
Instrument : MSVOA_Y
 ClientSampleId : 72-11934

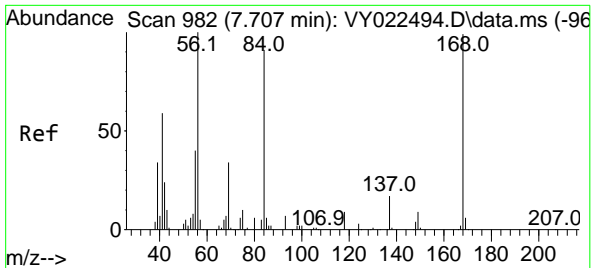
Tgt Ion:168 Resp: 298406
 Ion Ratio Lower Upper
 168 100
 99 54.8 44.3 66.5



#20
 Methylene Chloride
 Concen: 1.111 ug/l
 RT: 4.598 min Scan# 472
 Delta R.T. -0.025 min
 Lab File: VY022607.D
 Acq: 06 Jun 2025 18:00

Tgt Ion: 84 Resp: 4277
 Ion Ratio Lower Upper
 84 100
 49 102.5 101.9 152.9
 51 30.7 29.8 44.8
 86 63.3 51.3 76.9



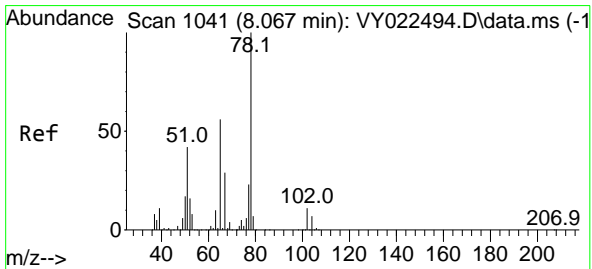
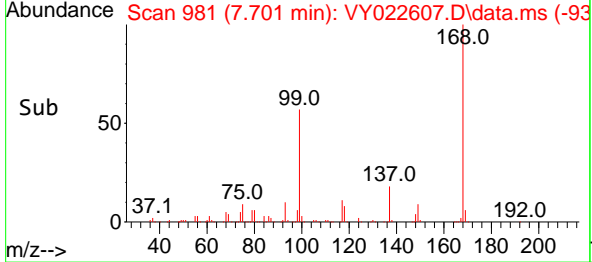
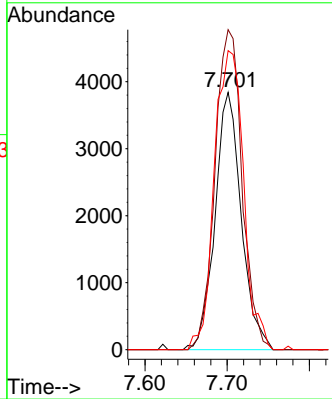
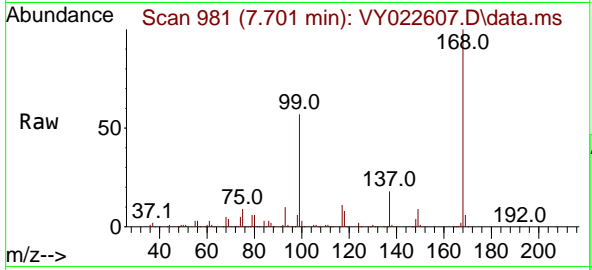


#31
 Cyclohexane
 Concen: 1.328 ug/l
 RT: 7.701 min Scan# 981
 Delta R.T. -0.006 min
 Lab File: VY022607.D
 Acq: 06 Jun 2025 18:00

Instrument : MSVOA_Y
 ClientSampleId : 72-11934

Tgt Ion: 56 Resp: 8518

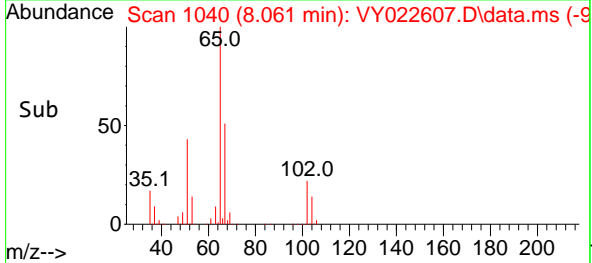
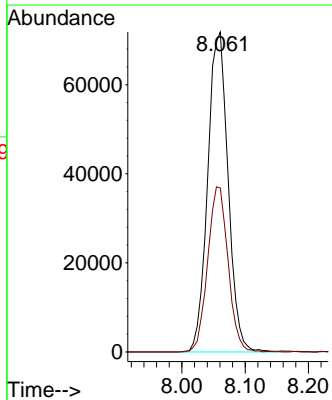
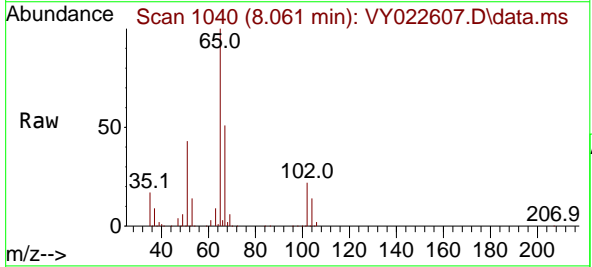
Ion	Ratio	Lower	Upper
56	100		
69	124.3	27.0	40.6#
84	116.2	72.6	109.0#

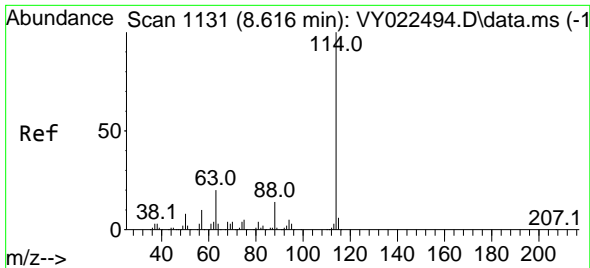


#33
 1,2-Dichloroethane-d4
 Concen: 48.210 ug/l
 RT: 8.061 min Scan# 1040
 Delta R.T. -0.006 min
 Lab File: VY022607.D
 Acq: 06 Jun 2025 18:00

Tgt Ion: 65 Resp: 160902

Ion	Ratio	Lower	Upper
65	100		
67	51.7	0.0	103.4

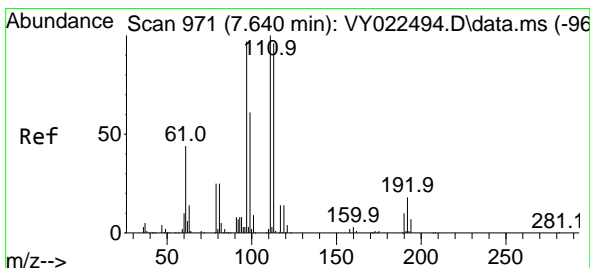
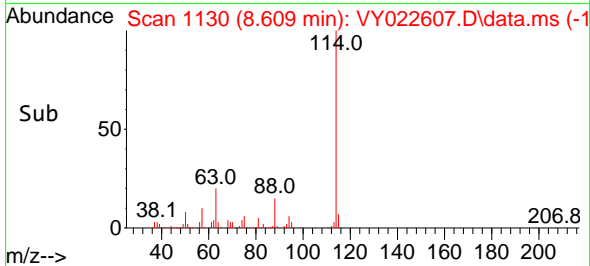
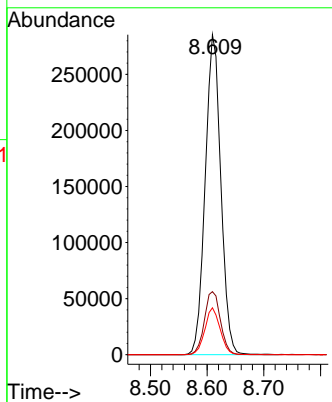
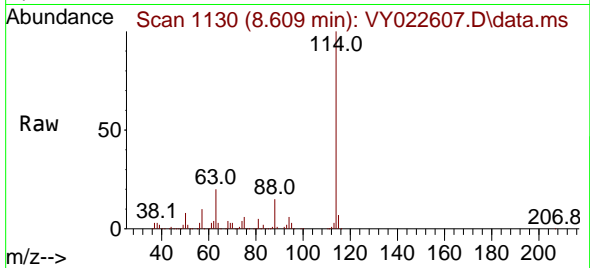




#34
 1,4-Difluorobenzene
 Concen: 50.000 ug/l
 RT: 8.609 min Scan# 1114
 Delta R.T. -0.006 min
 Lab File: VY022607.D
 Acq: 06 Jun 2025 18:00

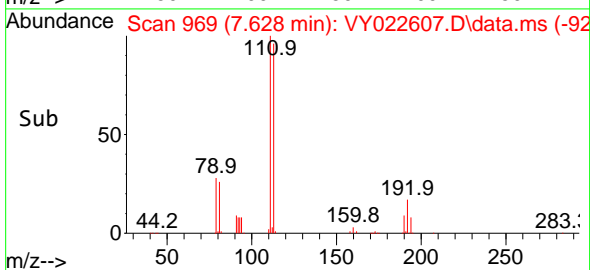
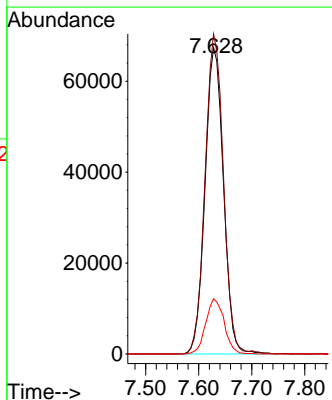
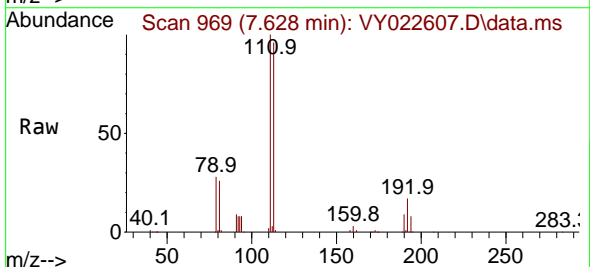
Instrument : MSVOA_Y
 ClientSampleId : 72-11934

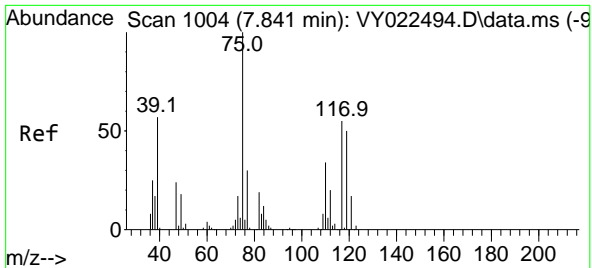
Tgt Ion	Resp	Lower	Upper
114	100		
63	19.7	0.0	40.8
88	14.7	0.0	27.8



#35
 Dibromofluoromethane
 Concen: 49.973 ug/l
 RT: 7.628 min Scan# 969
 Delta R.T. -0.012 min
 Lab File: VY022607.D
 Acq: 06 Jun 2025 18:00

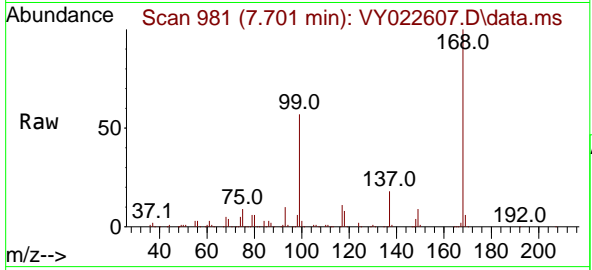
Tgt Ion	Resp	Lower	Upper
113	100		
111	104.2	81.1	121.7
192	18.0	14.2	21.2



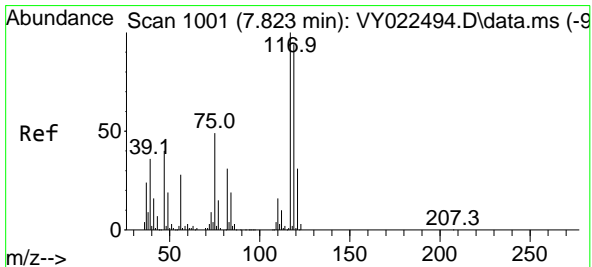
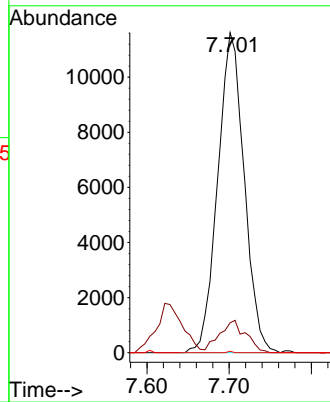
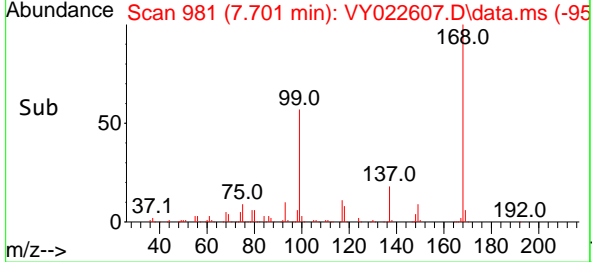


#36
 1,1-Dichloropropene
 Concen: 4.909 ug/l
 RT: 7.701 min Scan# 981
 Delta R.T. -0.140 min
 Lab File: VY022607.D
 Acq: 06 Jun 2025 18:00

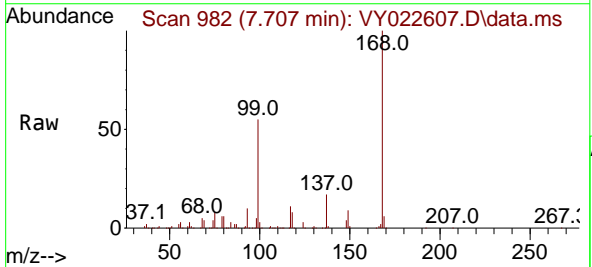
Instrument : MSVOA_Y
 ClientSampleId : 72-11934



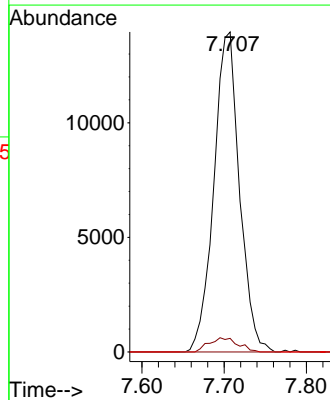
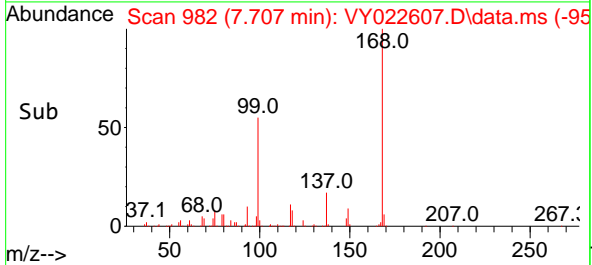
Tgt Ion: 75 Resp: 25972
 Ion Ratio Lower Upper
 75 100
 110 10.0 16.9 50.7#
 77 0.1 24.8 37.2#

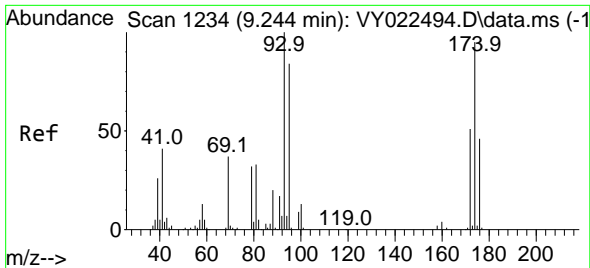


#38
 Carbon Tetrachloride
 Concen: 5.574 ug/l
 RT: 7.707 min Scan# 982
 Delta R.T. -0.116 min
 Lab File: VY022607.D
 Acq: 06 Jun 2025 18:00



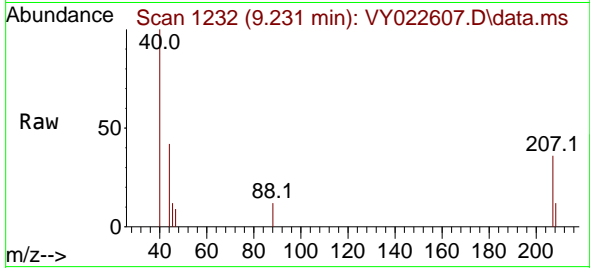
Tgt Ion: 117 Resp: 30251
 Ion Ratio Lower Upper
 117 100
 119 4.2 75.0 112.6#
 121 0.0 25.0 37.4#



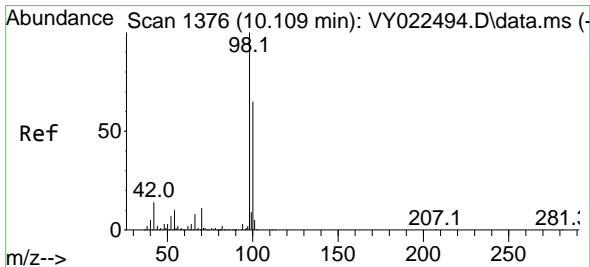
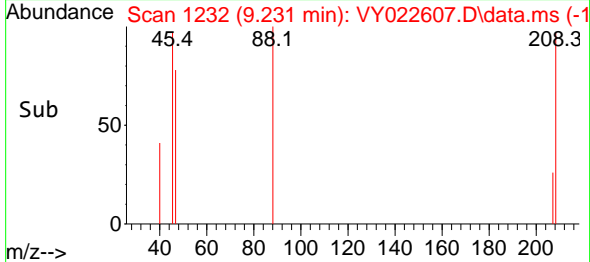
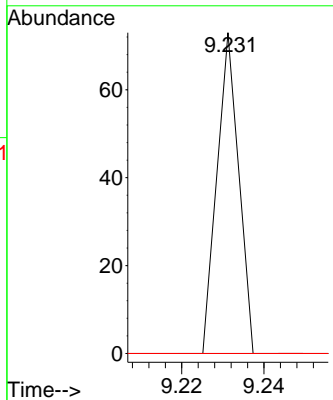


#49
 1,4-Dioxane
 Concen: 1.097 ug/l
 RT: 9.231 min Scan# 11
 Delta R.T. -0.012 min
 Lab File: VY022607.D
 Acq: 06 Jun 2025 18:00

Instrument : MSVOA_Y
 ClientSampleId : 72-11934

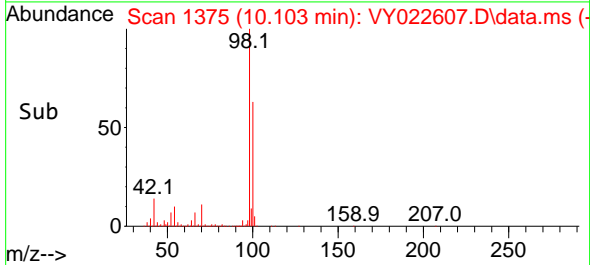
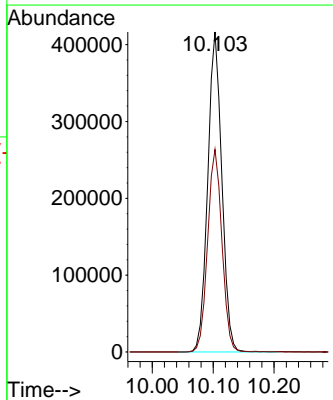
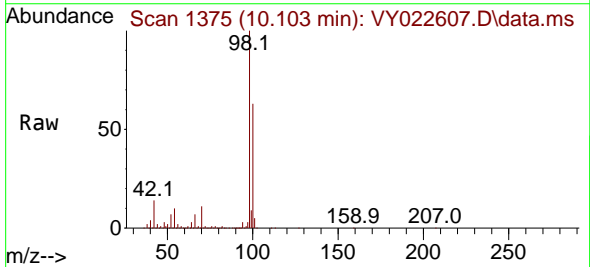


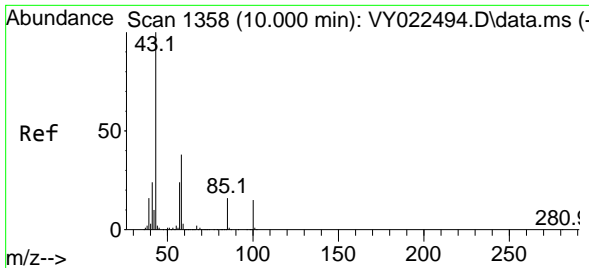
Tgt Ion: 88 Resp: 27
 Ion Ratio Lower Upper
 88 100
 43 0.0 25.4 38.2#
 58 0.0 54.9 82.3#



#50
 Toluene-d8
 Concen: 50.791 ug/l
 RT: 10.103 min Scan# 1375
 Delta R.T. -0.006 min
 Lab File: VY022607.D
 Acq: 06 Jun 2025 18:00

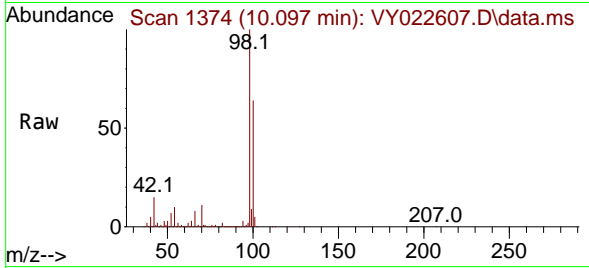
Tgt Ion: 98 Resp: 668942
 Ion Ratio Lower Upper
 98 100
 100 64.0 51.4 77.0



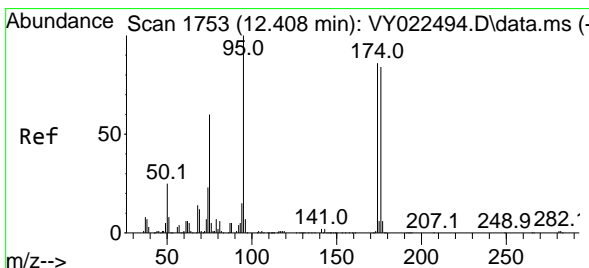
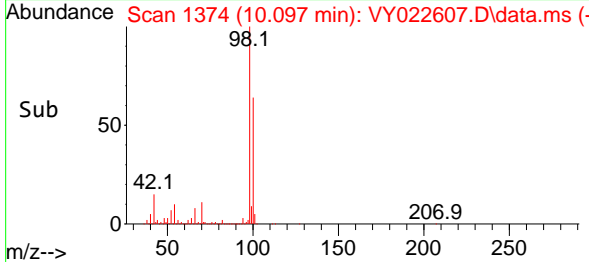
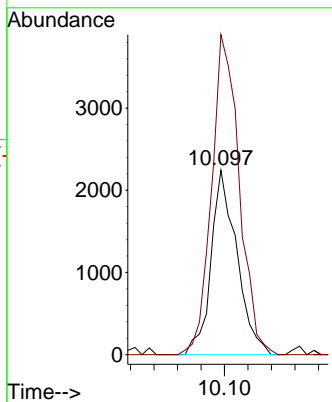


#51
 4-Methyl-2-Pentanone
 Concen: 1.349 ug/l
 RT: 10.097 min Scan# 11
 Delta R.T. 0.097 min
 Lab File: VY022607.D
 Acq: 06 Jun 2025 18:00

Instrument :
 MSVOA_Y
 ClientSampleId :
 72-11934

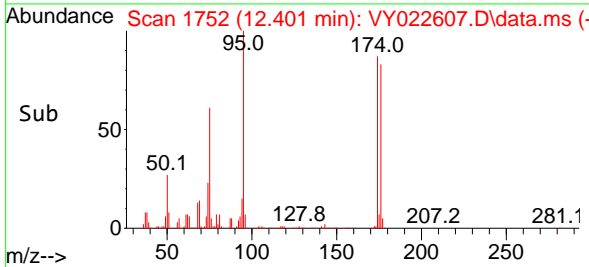
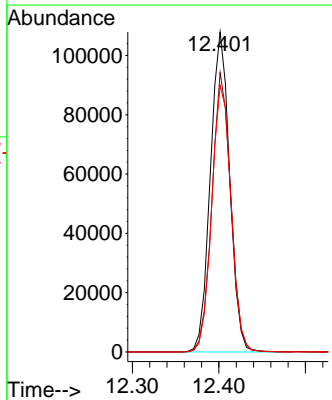
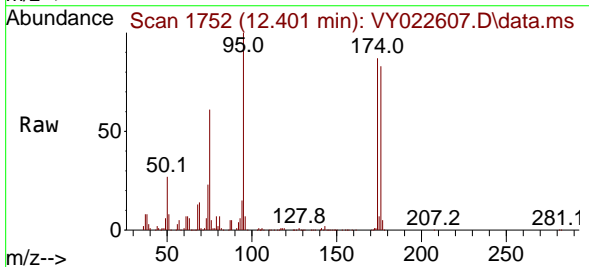


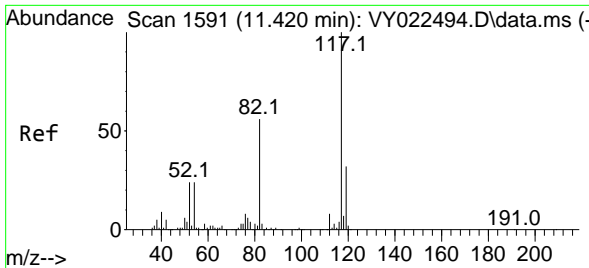
Tgt Ion: 43 Resp: 3428
 Ion Ratio Lower Upper
 43 100
 58 185.9 30.4 45.6#



#62
 4-Bromofluorobenzene
 Concen: 42.450 ug/l
 RT: 12.401 min Scan# 1752
 Delta R.T. -0.006 min
 Lab File: VY022607.D
 Acq: 06 Jun 2025 18:00

Tgt Ion: 95 Resp: 166579
 Ion Ratio Lower Upper
 95 100
 174 85.5 0.0 170.0
 176 83.8 0.0 166.2



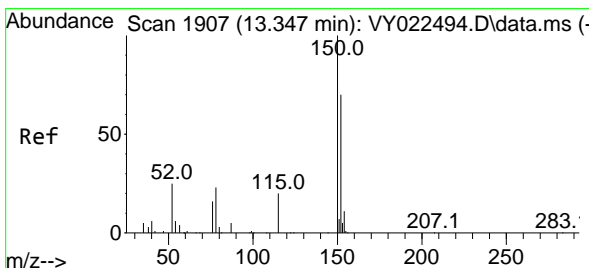
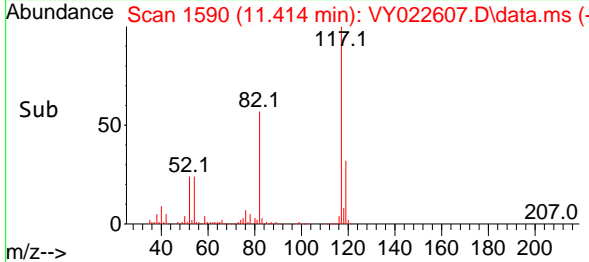
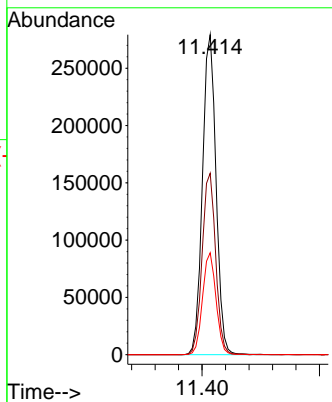
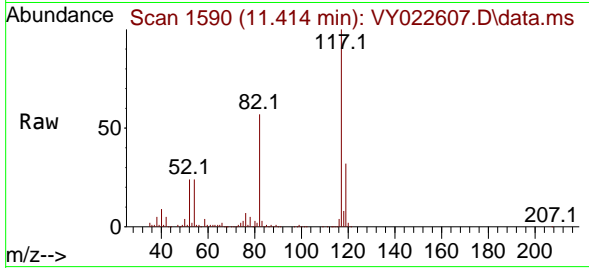


#63
 Chlorobenzene-d5
 Concen: 50.000 ug/l
 RT: 11.414 min Scan# 11
 Delta R.T. -0.006 min
 Lab File: VY022607.D
 Acq: 06 Jun 2025 18:00

Instrument : MSVOA_Y
 ClientSampleId : 72-11934

Tgt Ion:117 Resp: 448685

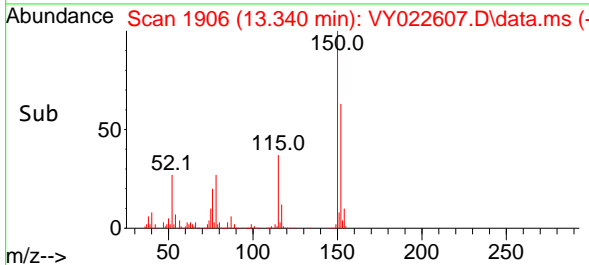
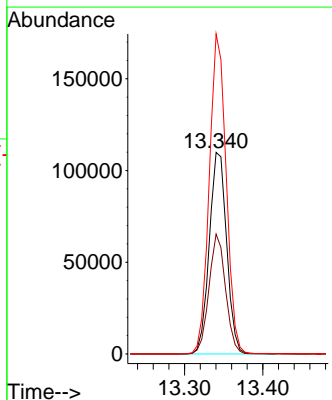
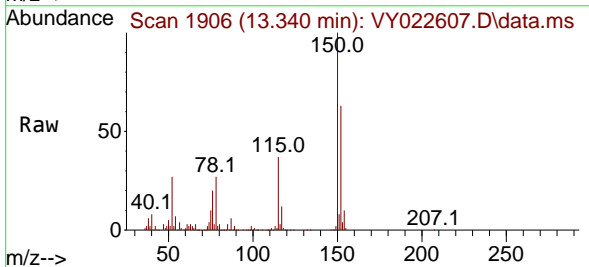
Ion	Ratio	Lower	Upper
117	100		
82	56.7	44.6	66.8
119	31.9	25.4	38.0

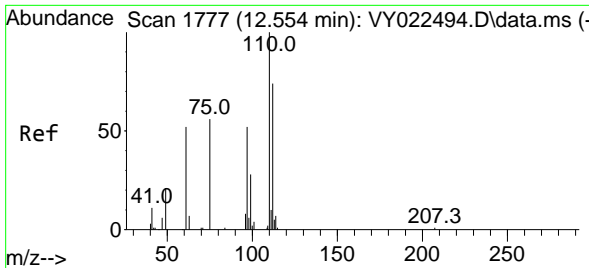


#72
 1,4-Dichlorobenzene-d4
 Concen: 50.000 ug/l
 RT: 13.340 min Scan# 1906
 Delta R.T. -0.006 min
 Lab File: VY022607.D
 Acq: 06 Jun 2025 18:00

Tgt Ion:152 Resp: 169312

Ion	Ratio	Lower	Upper
152	100		
115	56.9	28.9	86.7
150	154.6	0.0	349.6

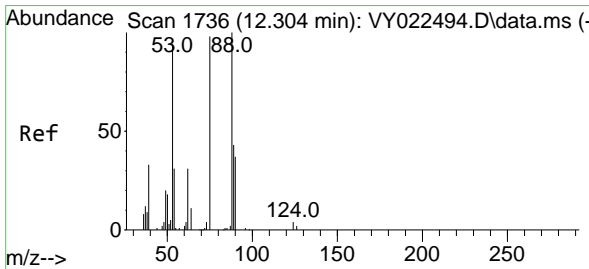
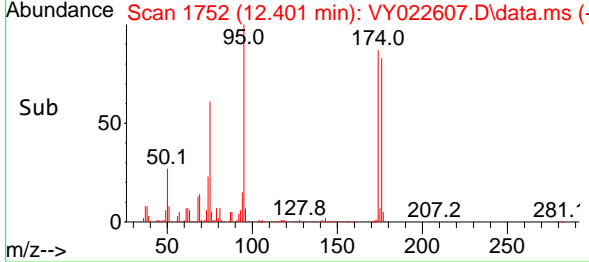
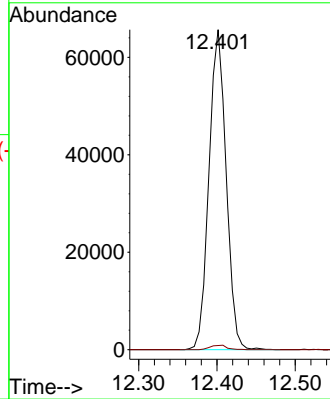
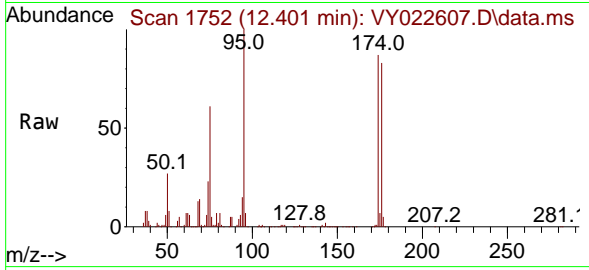




#76
 1,2,3-Trichloropropane
 Concen: 51.545 ug/l
 RT: 12.401 min Scan# 1752
 Delta R.T. -0.153 min
 Lab File: VY022607.D
 Acq: 06 Jun 2025 18:00

Instrument : MSVOA_Y
 ClientSampleId : 72-11934

Tgt Ion: 75 Resp: 99843
 Ion Ratio Lower Upper
 75 100
 77 1.4 0.0 0.0#



#81
 trans-1,4-Dichloro-2-butene
 Concen: 124.479 ug/l
 RT: 12.401 min Scan# 1752
 Delta R.T. 0.097 min
 Lab File: VY022607.D
 Acq: 06 Jun 2025 18:00

Tgt Ion: 75 Resp: 99843
 Ion Ratio Lower Upper
 75 100
 53 0.0 78.5 117.7#
 89 0.1 35.7 53.5#

