

Data Path : Z:\voasrv\HPCHEM1\MSVOA\_Y\Data\VY061024\  
 Data File : VY018548.D  
 Acq On : 10 Jun 2024 14:12  
 Operator : SY/MD  
 Sample : P2786-01  
 Misc : 5.05g/5.0mL/MSVOA\_Y/SOIL/A  
 ALS Vial : 12 Sample Multiplier: 1

Instrument :  
 MSVOA\_Y  
 ClientSampleId :  
 HD-02-060724

Manual Integrations  
 APPROVED

Reviewed By :Mahesh Dadoda 06/11/2024  
 Supervised By :Semsettin Yesilyurt 06/11/2024

Quant Time: Jun 11 01:55:50 2024  
 Quant Method : Z:\voasrv\HPCHEM1\MSVOA\_Y\methods\82Y060324S.M  
 Quant Title : SW846 8260  
 QLast Update : Tue Jun 04 07:11:56 2024  
 Response via : Initial Calibration

| Compound                    | R.T.   | QIon           | Response | Conc    | Units     | Dev(Min) |
|-----------------------------|--------|----------------|----------|---------|-----------|----------|
| Internal Standards          |        |                |          |         |           |          |
| 1) Pentafluorobenzene       | 7.783  | 168            | 377      | 50.000  | ug/l      | # 0.00   |
| 34) 1,4-Difluorobenzene     | 8.691  | 114            | 1089m    | 50.000  | ug/l      | 0.00     |
| 63) Chlorobenzene-d5        | 11.490 | 117            | 575m     | 50.000  | ug/l      | 0.00     |
| 72) 1,4-Dichlorobenzene-d4  | 13.434 | 152            | 98       | 50.000  | ug/l      | 0.01     |
| System Monitoring Compounds |        |                |          |         |           |          |
| 33) 1,2-Dichloroethane-d4   | 8.130  | 65             | 985      | 133.042 | ug/l      | 0.00     |
| Spiked Amount               | 50.000 | Range 50 - 163 | Recovery | =       | 266.080%# |          |
| 35) Dibromofluoromethane    | 7.655  | 113            | 61       | 4.417   | ug/l      | -0.05    |
| Spiked Amount               | 50.000 | Range 54 - 147 | Recovery | =       | 8.840%#   |          |
| 50) Toluene-d8              | 10.179 | 98             | 1790     | 32.583  | ug/l      | 0.00     |
| Spiked Amount               | 50.000 | Range 58 - 134 | Recovery | =       | 65.160%   |          |
| 62) 4-Bromofluorobenzene    | 12.483 | 95             | 143      | 8.360   | ug/l      | 0.00     |
| Spiked Amount               | 50.000 | Range 30 - 143 | Recovery | =       | 16.720%#  |          |

Target Compounds Qvalue

(#) = qualifier out of range (m) = manual integration (+) = signals summed

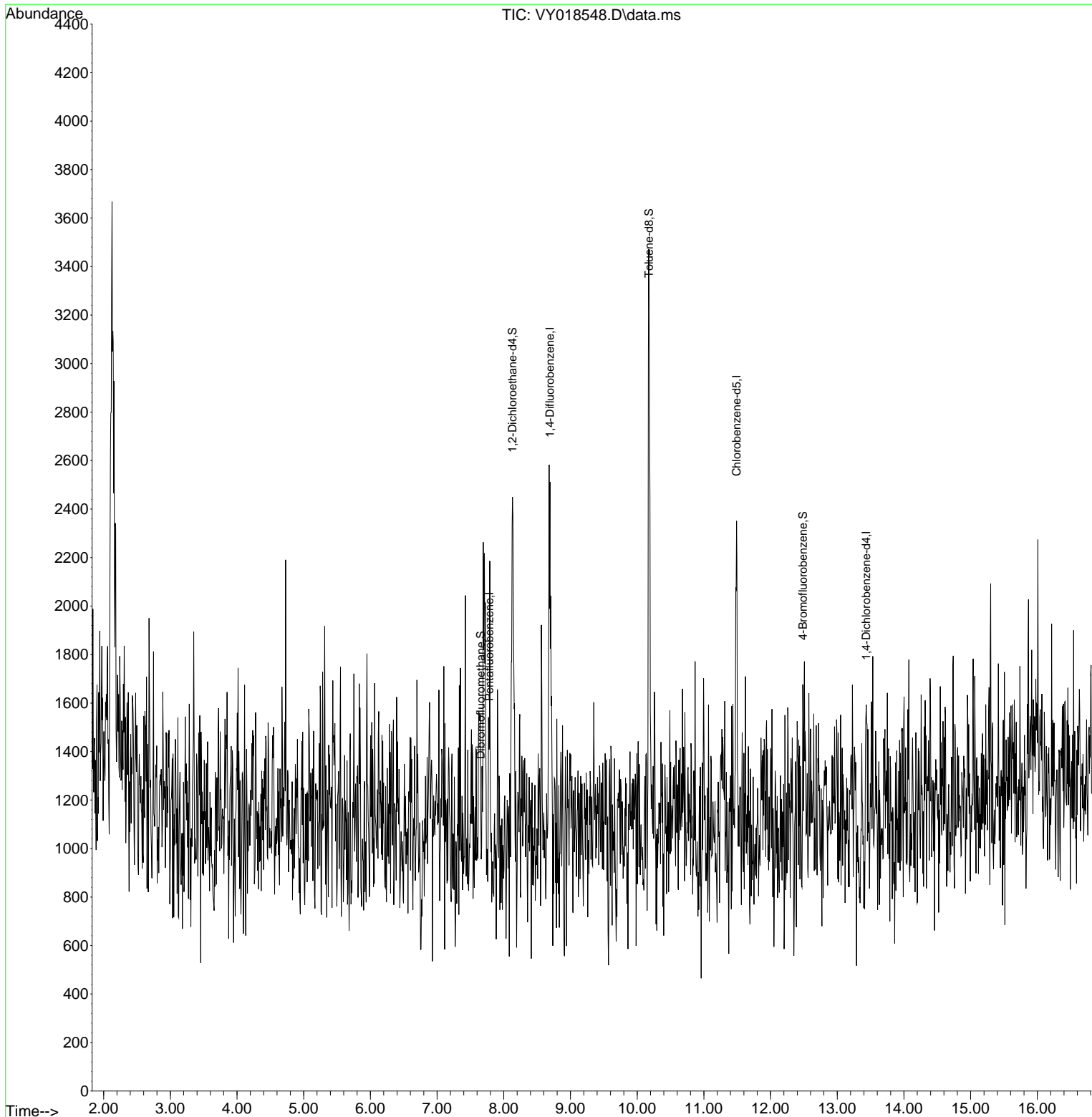
Data Path : Z:\voasrv\HPCHEM1\MSVOA\_Y\Data\VY061024\  
 Data File : VY018548.D  
 Acq On : 10 Jun 2024 14:12  
 Operator : SY/MD  
 Sample : P2786-01  
 Misc : 5.05g/5.0mL/MSVOA\_Y/SOIL/A  
 ALS Vial : 12 Sample Multiplier: 1

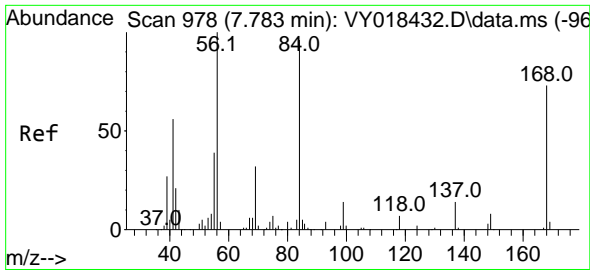
Instrument :  
 MSVOA\_Y  
 ClientSampleId :  
 HD-02-060724

Quant Time: Jun 11 01:55:50 2024  
 Quant Method : Z:\voasrv\HPCHEM1\MSVOA\_Y\methods\82Y060324S.M  
 Quant Title : SW846 8260  
 QLast Update : Tue Jun 04 07:11:56 2024  
 Response via : Initial Calibration

Manual Integrations  
**APPROVED**

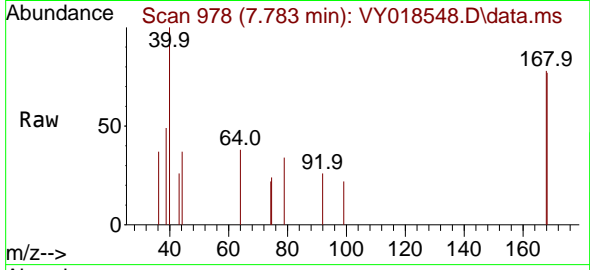
Reviewed By :Mahesh Dadoda 06/11/2024  
 Supervised By :Semsettin Yesilyurt 06/11/2024





#1  
 Pentafluorobenzene  
 Concen: 50.000 ug/l  
 RT: 7.783 min Scan# 91  
 Delta R.T. -0.000 min  
 Lab File: VY018548.D  
 Acq: 10 Jun 2024 14:12

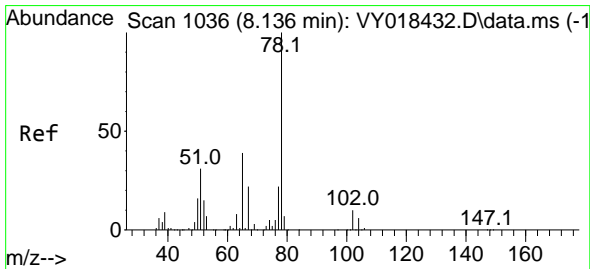
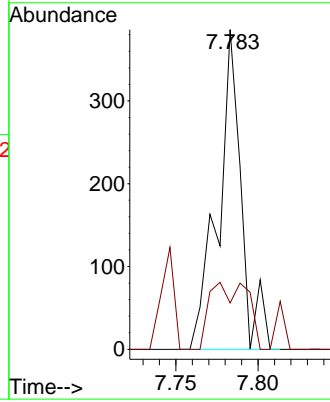
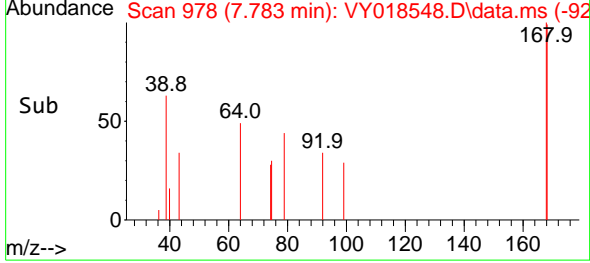
Instrument :  
 MSVOA\_Y  
 ClientSampleId :  
 HD-02-060724



Tgt Ion: 168 Resp: 37  
 Ion Ratio Lower Upper  
 168 100  
 99 14.5 39.1 58.7

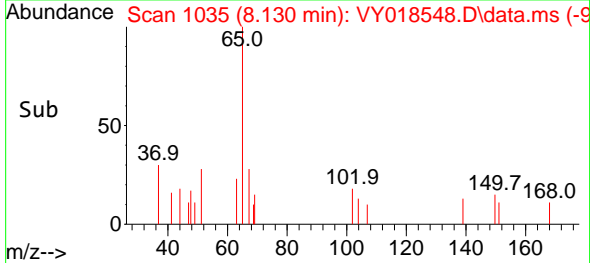
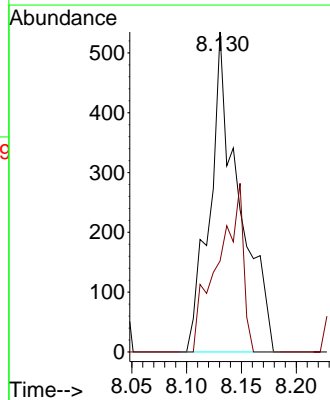
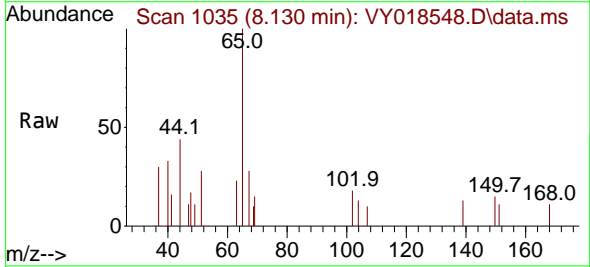
Manual Integrations  
 APPROVED

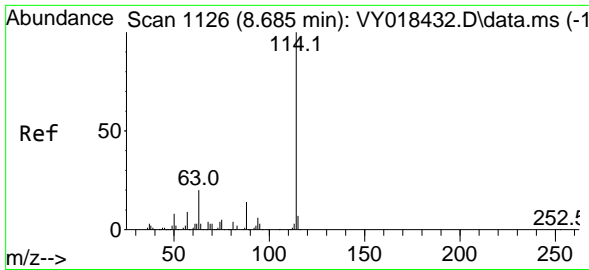
Reviewed By :Mahesh Dadoda 06/11/2024  
 Supervised By :Semsettin Yesilyurt 06/11/2024



#33  
 1,2-Dichloroethane-d4  
 Concen: 133.042 ug/l  
 RT: 8.130 min Scan# 1035  
 Delta R.T. -0.006 min  
 Lab File: VY018548.D  
 Acq: 10 Jun 2024 14:12

Tgt Ion: 65 Resp: 985  
 Ion Ratio Lower Upper  
 65 100  
 67 45.7 0.0 109.6





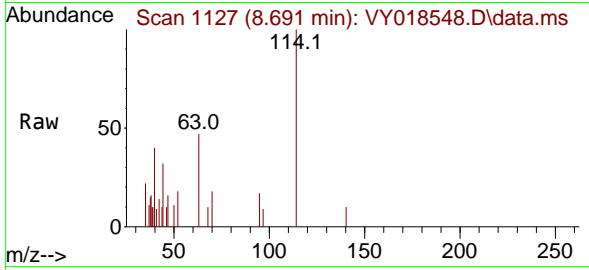
#34  
 1,4-Difluorobenzene  
 Concen: 50.000 ug/l m  
 RT: 8.691 min Scan# 1127  
 Delta R.T. 0.006 min  
 Lab File: VY018548.D  
 Acq: 10 Jun 2024 14:12

Instrument :

MSVOA\_Y

ClientSampleId :

HD-02-060724



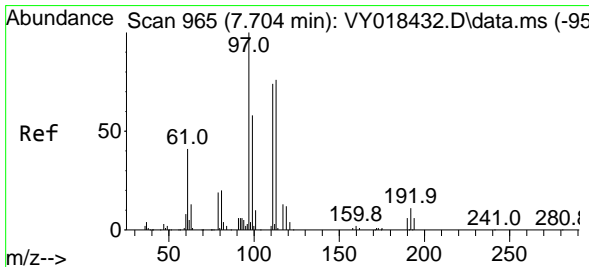
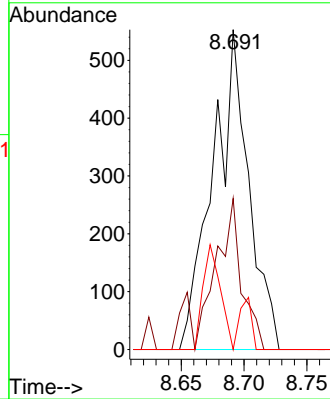
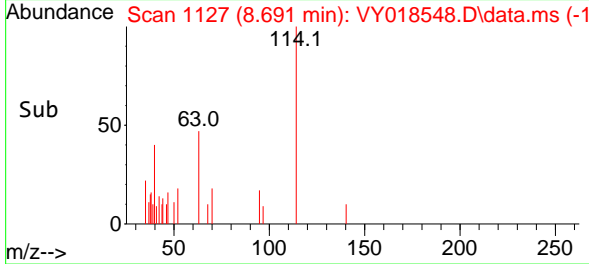
| Tgt Ion | Ratio | Lower | Upper |
|---------|-------|-------|-------|
| 114     | 100   |       |       |
| 63      | 47.2  | 0.0   | 35.0  |
| 88      | 0.0   | 0.0   | 27.2  |

Manual Integrations

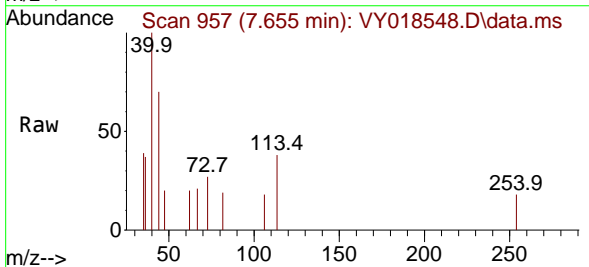
APPROVED

Reviewed By :Mahesh Dadoda 06/11/2024

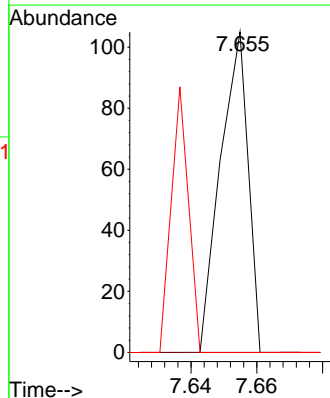
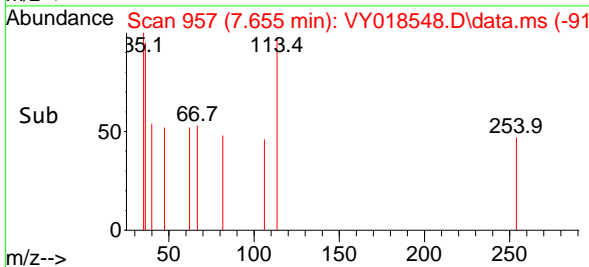
Supervised By :Semsettin Yesilyurt 06/11/2024

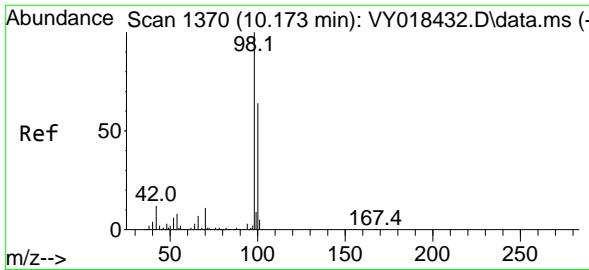


#35  
 Dibromofluoromethane  
 Concen: 4.417 ug/l  
 RT: 7.655 min Scan# 957  
 Delta R.T. -0.049 min  
 Lab File: VY018548.D  
 Acq: 10 Jun 2024 14:12



| Tgt Ion | Ratio | Lower | Upper  |
|---------|-------|-------|--------|
| 113     | 100   |       |        |
| 111     | 0.0   | 82.2  | 123.4# |
| 192     | 52.5  | 15.9  | 23.9#  |





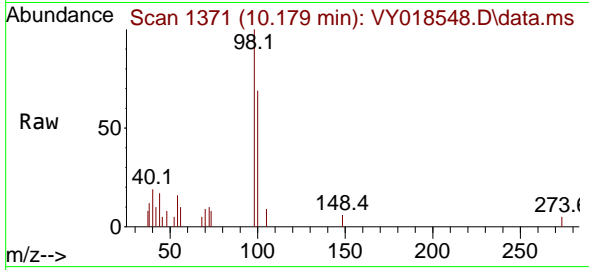
#50  
 Toluene-d8  
 Concen: 32.583 ug/l  
 RT: 10.179 min Scan# 11  
 Delta R.T. 0.006 min  
 Lab File: VY018548.D  
 Acq: 10 Jun 2024 14:12

Instrument :

MSVOA\_Y

ClientSampleId :

HD-02-060724

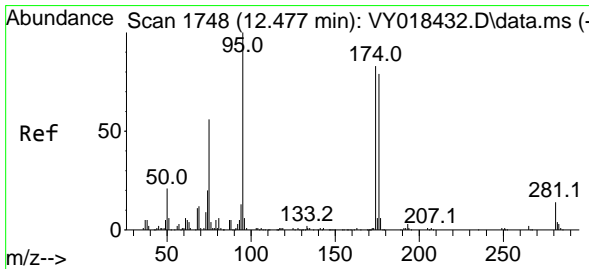
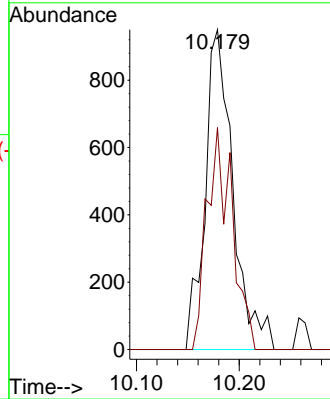
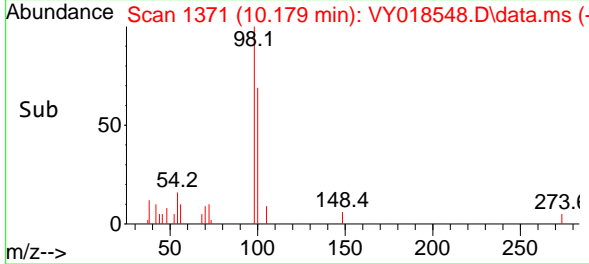


Tgt Ion: 98 Resp: 1790  
 Ion Ratio Lower Upper  
 98 100  
 100 62.8 52.0 78.0

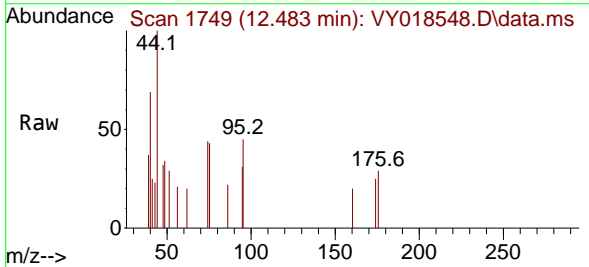
Manual Integrations

APPROVED

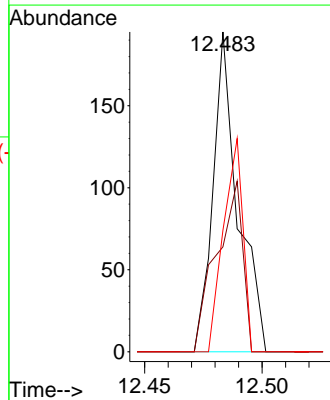
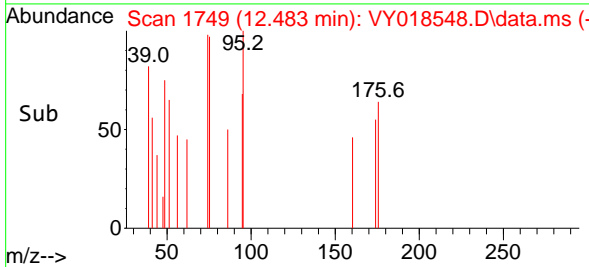
Reviewed By :Mahesh Dadoda 06/11/2024  
 Supervised By :Semsettin Yesilyurt 06/11/2024

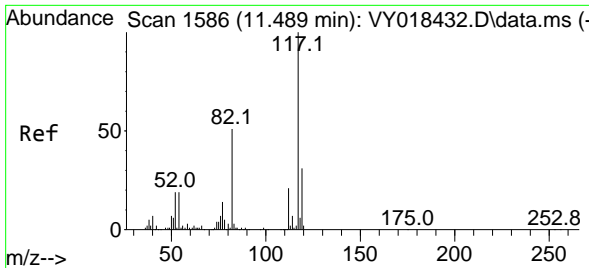


#62  
 4-Bromofluorobenzene  
 Concen: 8.360 ug/l  
 RT: 12.483 min Scan# 1749  
 Delta R.T. 0.006 min  
 Lab File: VY018548.D  
 Acq: 10 Jun 2024 14:12



Tgt Ion: 95 Resp: 143  
 Ion Ratio Lower Upper  
 95 100  
 174 56.6 0.0 175.6  
 176 52.4 0.0 171.4





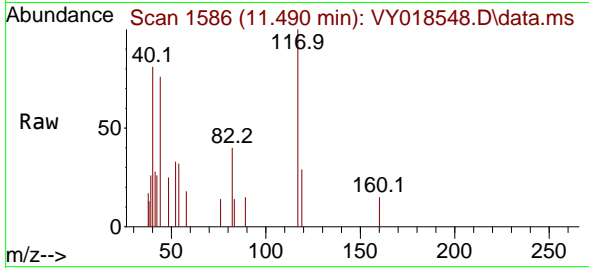
#63  
 Chlorobenzene-d5  
 Concen: 50.000 ug/l m  
 RT: 11.490 min Scan# 11  
 Delta R.T. 0.000 min  
 Lab File: VY018548.D  
 Acq: 10 Jun 2024 14:12

Instrument :

MSVOA\_Y

ClientSampleId :

HD-02-060724



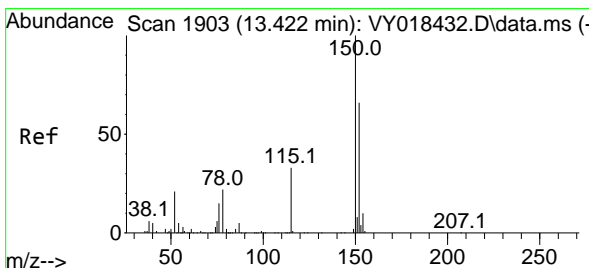
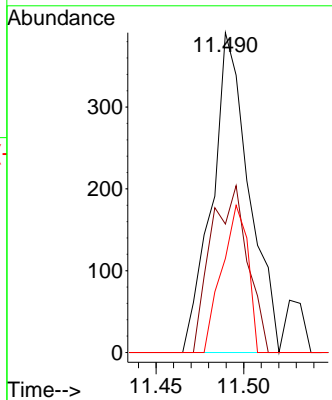
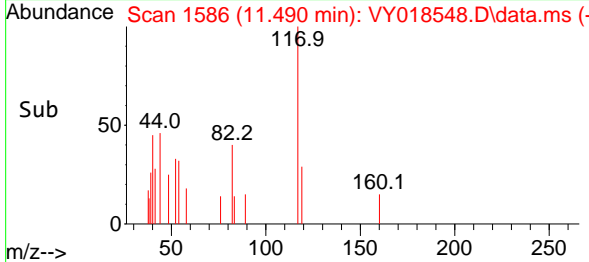
Tgt Ion:117 Resp: 579

| Ion | Ratio | Lower | Upper |
|-----|-------|-------|-------|
| 117 | 100   |       |       |
| 82  | 40.2  | 42.4  | 63.6  |
| 119 | 29.4  | 25.9  | 38.9  |

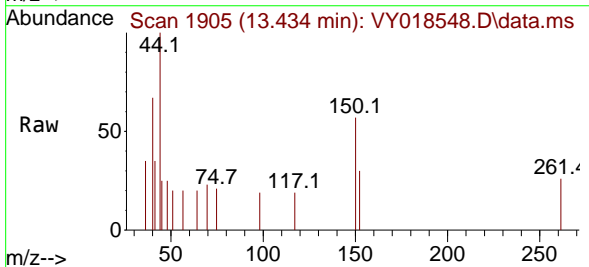
Manual Integrations

APPROVED

Reviewed By :Mahesh Dadoda 06/11/2024  
 Supervised By :Semsettin Yesilyurt 06/11/2024



#72  
 1,4-Dichlorobenzene-d4  
 Concen: 50.000 ug/l  
 RT: 13.434 min Scan# 1905  
 Delta R.T. 0.012 min  
 Lab File: VY018548.D  
 Acq: 10 Jun 2024 14:12



Tgt Ion:152 Resp: 98

| Ion | Ratio | Lower | Upper |
|-----|-------|-------|-------|
| 152 | 100   |       |       |
| 115 | 32.7  | 28.2  | 84.7  |
| 150 | 113.3 | 0.0   | 345.6 |

