

Data Path : Z:\voasrv\HPCHEM1\MSVOA_Y\Data\VY061124\
 Data File : VY018564.D
 Acq On : 11 Jun 2024 18:00
 Operator : SY/MD
 Sample : P2784-03
 Misc : 6.29g/5.0mL/MSVOA_Y/SOIL/A
 ALS Vial : 15 Sample Multiplier: 1

Instrument :
 MSVOA_Y
 ClientSampleId :

Quant Time: Jun 12 03:05:21 2024
 Quant Method : Z:\voasrv\HPCHEM1\MSVOA_Y\methods\82Y060324S.M
 Quant Title : SW846 8260
 QLast Update : Tue Jun 04 07:11:56 2024
 Response via : Initial Calibration

Compound	R.T.	QIon	Response	Conc	Units	Dev(Min)

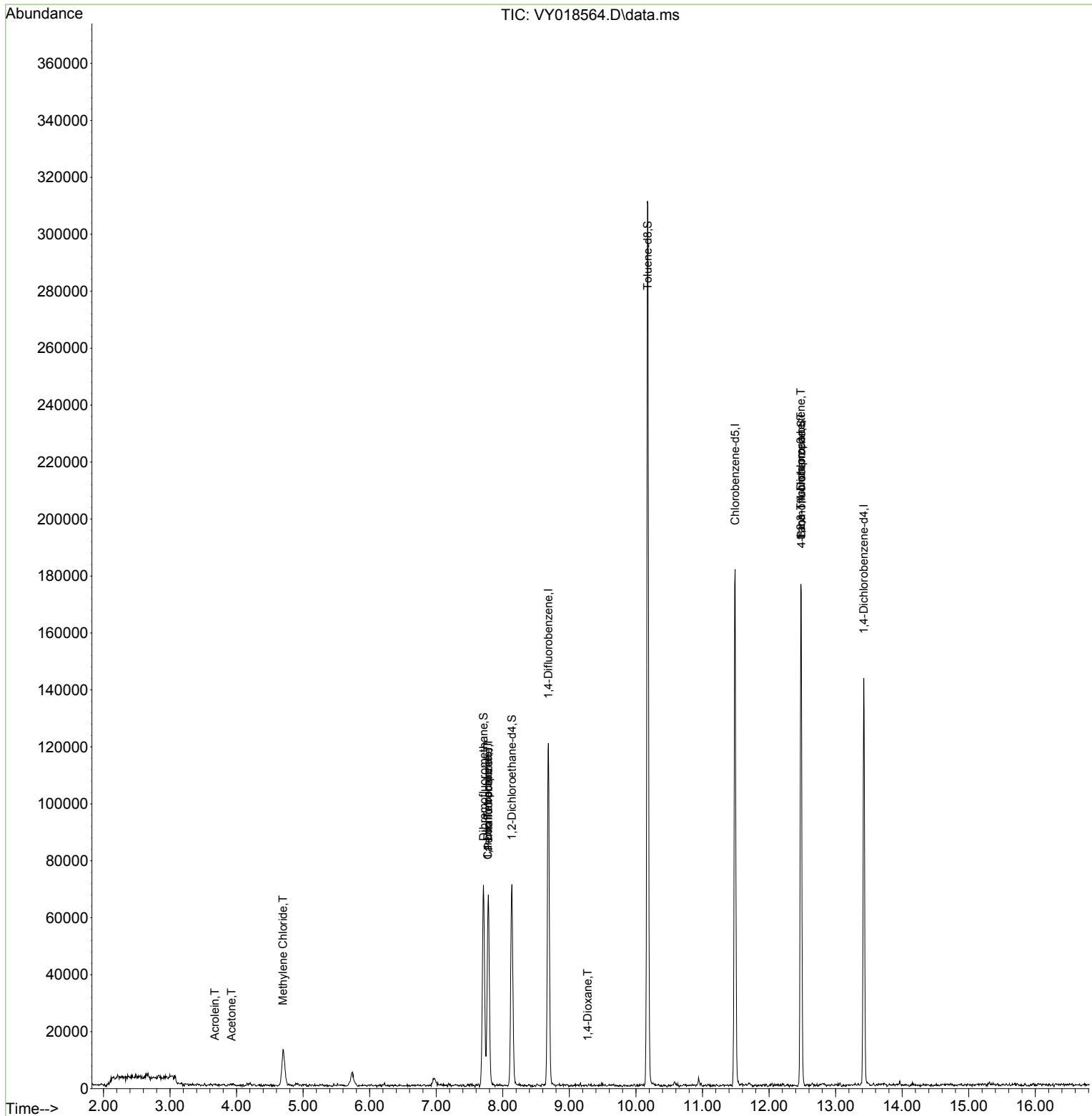
Internal Standards						
1) Pentafluorobenzene	7.783	168	46840	50.000	ug/l	0.00
34) 1,4-Difluorobenzene	8.685	114	95770	50.000	ug/l	0.00
63) Chlorobenzene-d5	11.490	117	90303	50.000	ug/l	0.00
72) 1,4-Dichlorobenzene-d4	13.422	152	32362	50.000	ug/l	0.00
System Monitoring Compounds						
33) 1,2-Dichloroethane-d4	8.137	65	52016	56.547	ug/l	0.00
Spiked Amount	50.000	Range	50 - 163	Recovery	=	113.100%
35) Dibromofluoromethane	7.710	113	46611	38.381	ug/l	0.00
Spiked Amount	50.000	Range	54 - 147	Recovery	=	76.760%
50) Toluene-d8	10.179	98	195080	40.378	ug/l	0.00
Spiked Amount	50.000	Range	58 - 134	Recovery	=	80.760%
62) 4-Bromofluorobenzene	12.483	95	51498	34.235	ug/l	0.00
Spiked Amount	50.000	Range	30 - 143	Recovery	=	68.460%
Target Compounds						
					Qvalue	
11) Tert butyl alcohol	4.930	59	688	Below Cal	#	88
13) Acrolein	3.674	56	109	1.158	ug/l	86
16) Acetone	3.924	43	921	4.511	ug/l #	69
20) Methylene Chloride	4.698	84	8277	4.393	ug/l #	56
36) 1,1-Dichloropropene	7.777	75	4473	2.416	ug/l #	50
38) Carbon Tetrachloride	7.777	117	5041	2.717	ug/l #	15
49) 1,4-Dioxane	9.277	88	22	2.303	ug/l #	44
76) 1,2,3-Trichloropropane	12.477	75	30334	75.591	ug/l #	100
81) trans-1,4-Dichloro-2-b...	12.477	75	30334	158.811	ug/l #	16

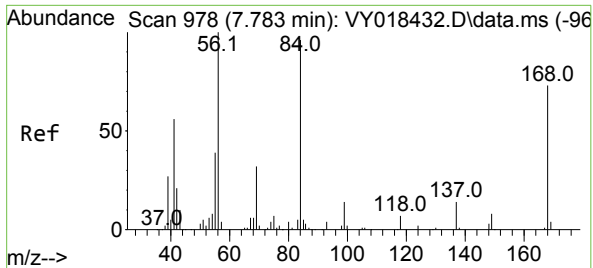
(#) = qualifier out of range (m) = manual integration (+) = signals summed

Data Path : Z:\voasrv\HPCHEM1\MSVOA_Y\Data\VY061124\
 Data File : VY018564.D
 Acq On : 11 Jun 2024 18:00
 Operator : SY/MD
 Sample : P2784-03
 Misc : 6.29g/5.0mL/MSVOA_Y/SOIL/A
 ALS Vial : 15 Sample Multiplier: 1

Instrument :
 MSVOA_Y
 ClientSampleId :

Quant Time: Jun 12 03:05:21 2024
 Quant Method : Z:\voasrv\HPCHEM1\MSVOA_Y\methods\82Y060324S.M
 Quant Title : SW846 8260
 QLast Update : Tue Jun 04 07:11:56 2024
 Response via : Initial Calibration

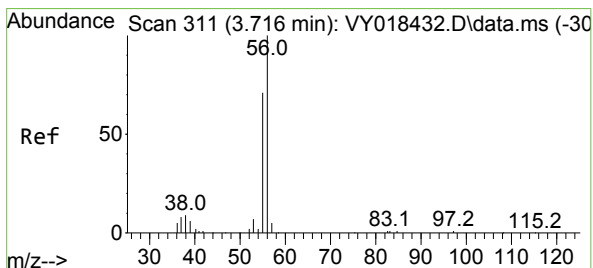
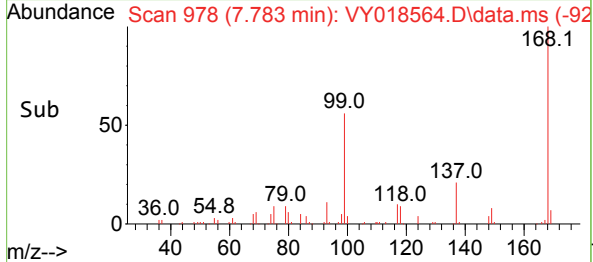
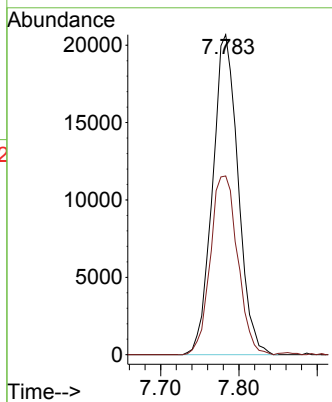
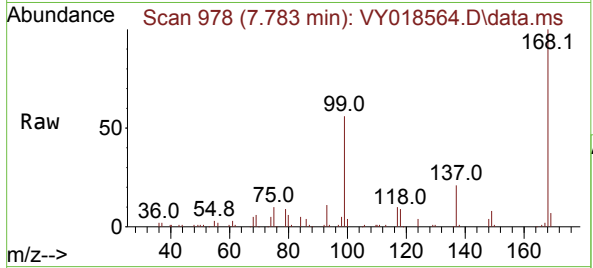




#1
 Pentafluorobenzene
 Concen: 50.000 ug/l
 RT: 7.783 min Scan# 91
 Delta R.T. -0.000 min
 Lab File: VY018564.D
 Acq: 11 Jun 2024 18:00

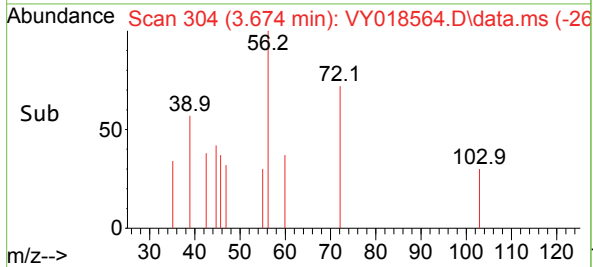
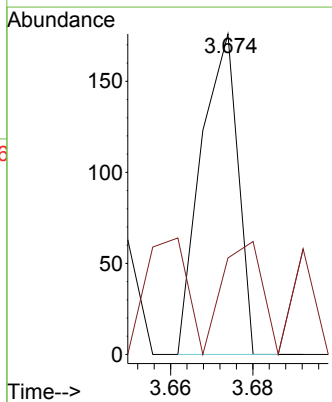
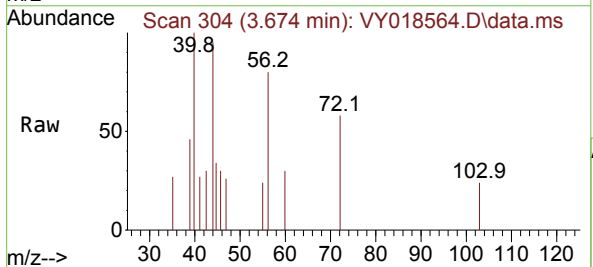
Instrument :
 MSVOA_Y
 ClientSampleId :

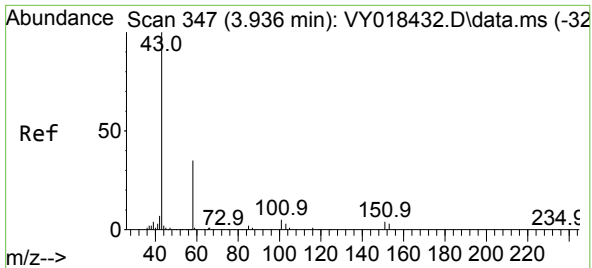
Tgt Ion:168 Resp: 46840
 Ion Ratio Lower Upper
 168 100
 99 55.9 39.1 58.7



#13
 Acrolein
 Concen: 1.158 ug/l
 RT: 3.674 min Scan# 304
 Delta R.T. -0.042 min
 Lab File: VY018564.D
 Acq: 11 Jun 2024 18:00

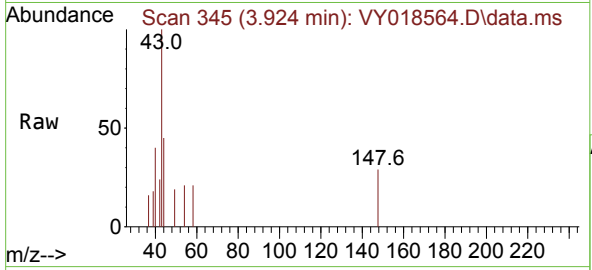
Tgt Ion: 56 Resp: 109
 Ion Ratio Lower Upper
 56 100
 55 57.8 55.7 83.5



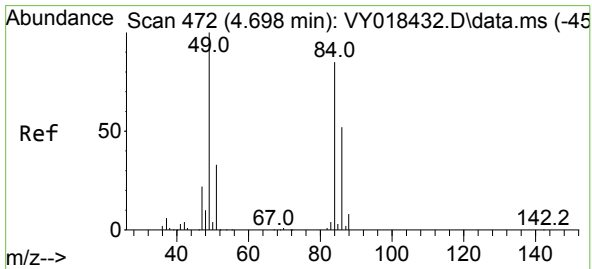
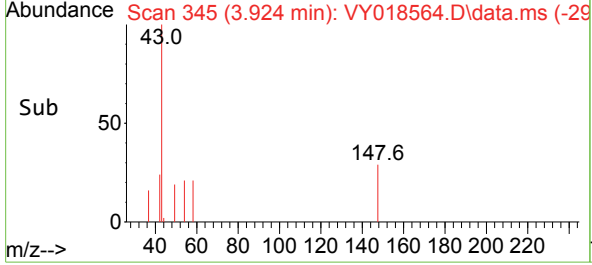
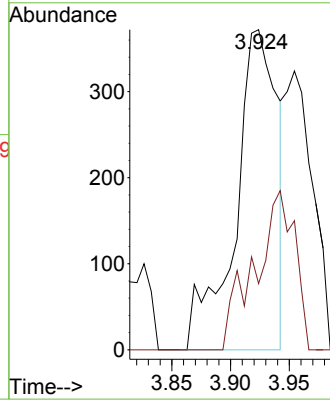


#16
 Acetone
 Concen: 4.511 ug/l
 RT: 3.924 min Scan# 347
 Delta R.T. -0.012 min
 Lab File: VY018564.D
 Acq: 11 Jun 2024 18:00

Instrument : MSVOA_Y
 ClientSampleId :

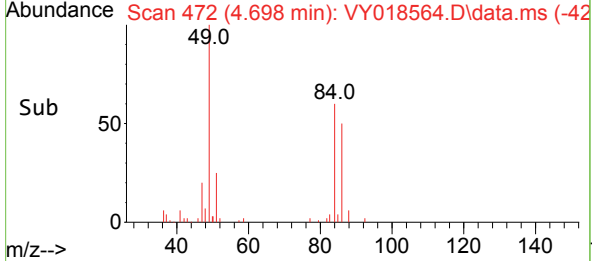
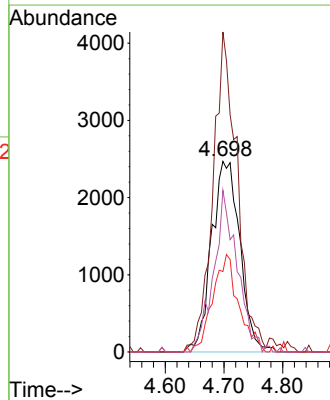
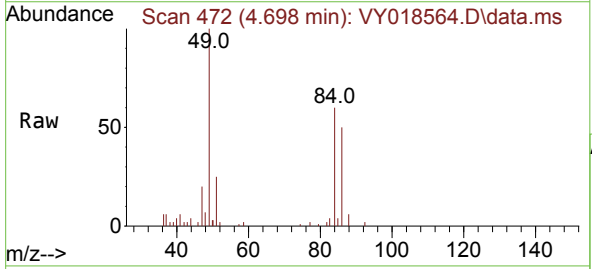


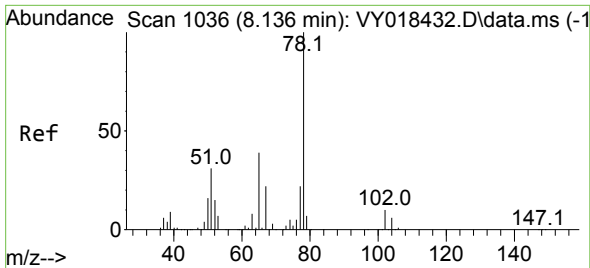
Tgt Ion: 43 Resp: 921
 Ion Ratio Lower Upper
 43 100
 58 20.7 31.7 47.5#



#20
 Methylene Chloride
 Concen: 4.393 ug/l
 RT: 4.698 min Scan# 472
 Delta R.T. 0.000 min
 Lab File: VY018564.D
 Acq: 11 Jun 2024 18:00

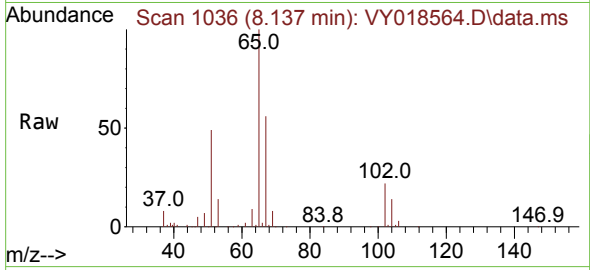
Tgt Ion: 84 Resp: 8277
 Ion Ratio Lower Upper
 84 100
 49 167.9 84.4 126.6#
 51 42.2 26.0 39.0#
 86 84.8 49.5 74.3#



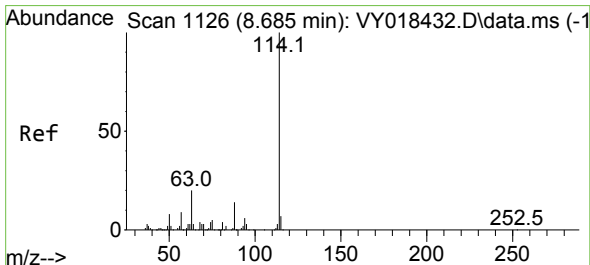
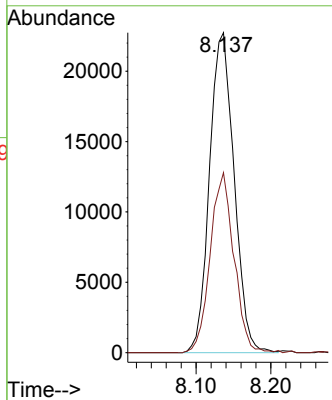
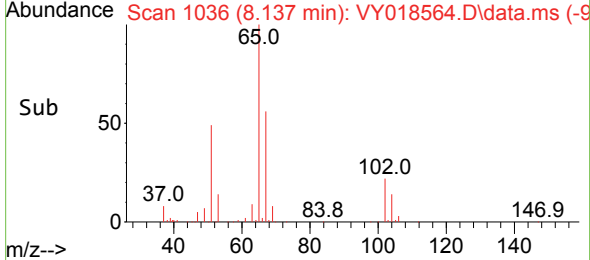


#33
 1,2-Dichloroethane-d4
 Concen: 56.547 ug/l
 RT: 8.137 min Scan# 1036
 Delta R.T. 0.000 min
 Lab File: VY018564.D
 Acq: 11 Jun 2024 18:00

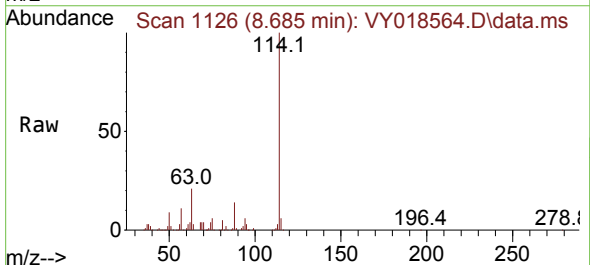
Instrument : MSVOA_Y
 ClientSampleId :



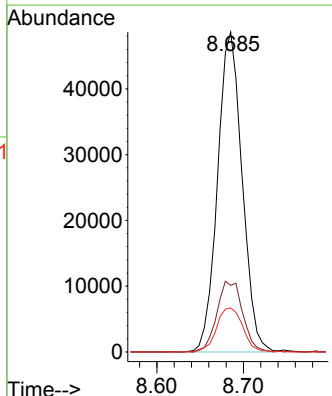
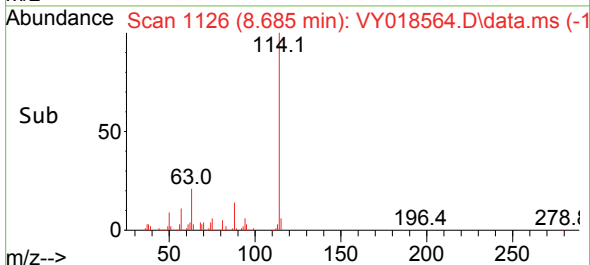
Tgt Ion: 65 Resp: 52016
 Ion Ratio Lower Upper
 65 100
 67 54.3 0.0 109.6

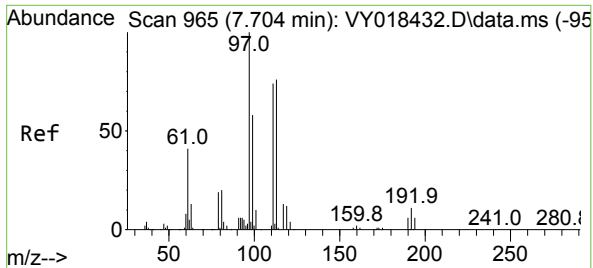


#34
 1,4-Difluorobenzene
 Concen: 50.000 ug/l
 RT: 8.685 min Scan# 1126
 Delta R.T. 0.000 min
 Lab File: VY018564.D
 Acq: 11 Jun 2024 18:00



Tgt Ion: 114 Resp: 95770
 Ion Ratio Lower Upper
 114 100
 63 20.8 0.0 35.0
 88 13.8 0.0 27.2

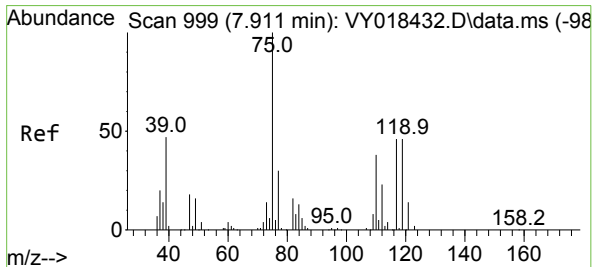
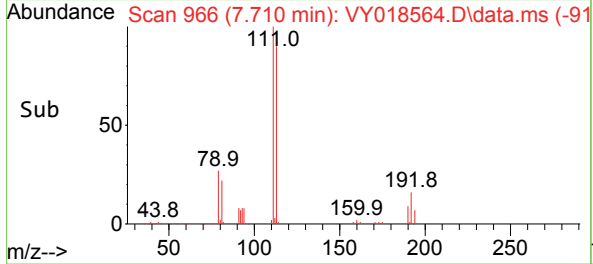
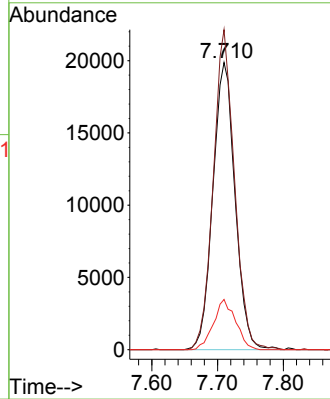
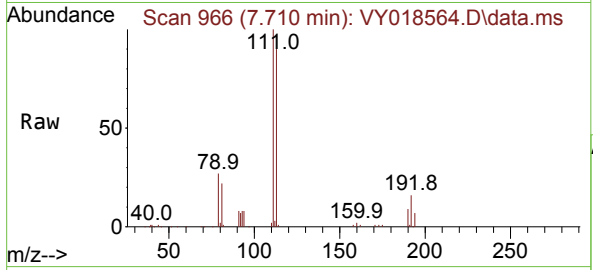




#35
 Dibromofluoromethane
 Concen: 38.381 ug/l
 RT: 7.710 min Scan# 900
 Delta R.T. 0.006 min
 Lab File: VY018564.D
 Acq: 11 Jun 2024 18:00

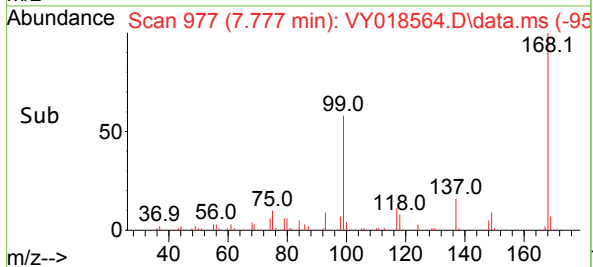
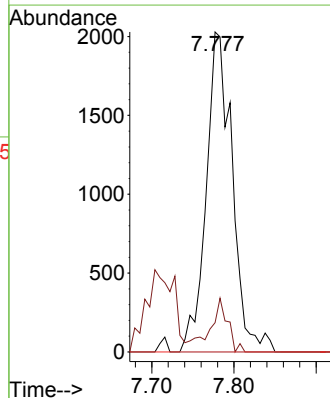
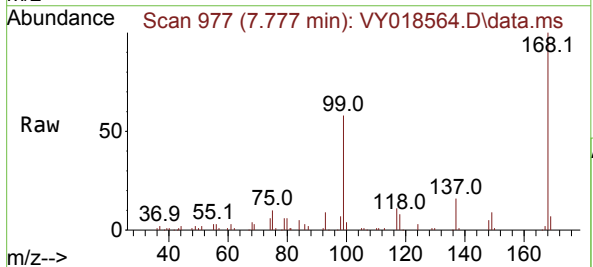
Instrument :
 MSVOA_Y
 ClientSampleId :

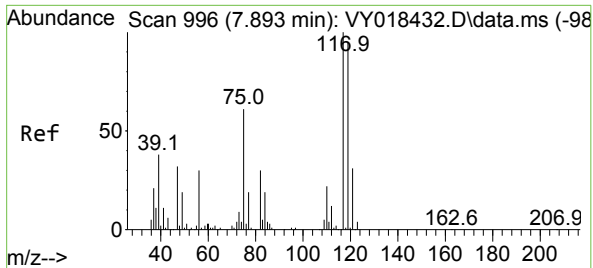
Tgt Ion	Resp	Lower	Upper
113	46611		
113	100		
111	106.4	82.2	123.4
192	17.5	15.9	23.9



#36
 1,1-Dichloropropene
 Concen: 2.416 ug/l
 RT: 7.777 min Scan# 977
 Delta R.T. -0.134 min
 Lab File: VY018564.D
 Acq: 11 Jun 2024 18:00

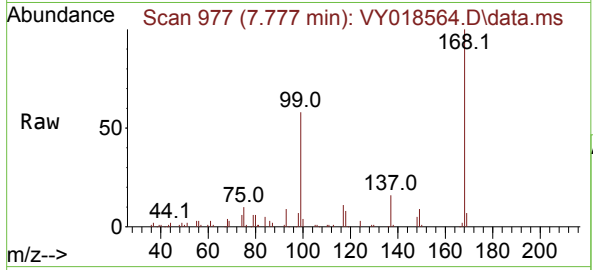
Tgt Ion	Resp	Lower	Upper
75	4473		
75	100		
110	11.2	19.0	57.0#
77	0.0	25.3	37.9#





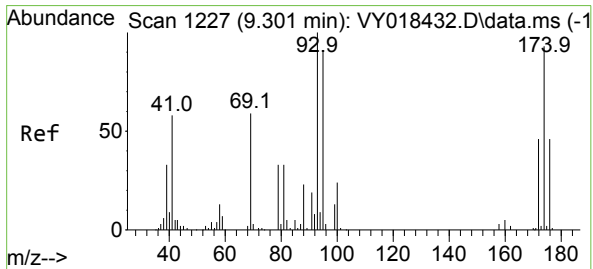
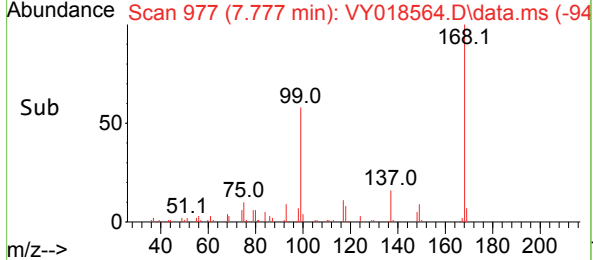
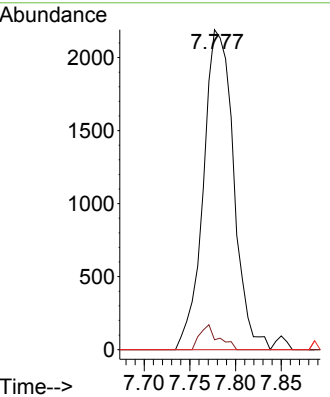
#38
 Carbon Tetrachloride
 Concen: 2.717 ug/l
 RT: 7.777 min Scan# 91
 Delta R.T. -0.116 min
 Lab File: VY018564.D
 Acq: 11 Jun 2024 18:00

Instrument : MSVOA_Y
 ClientSampleId :



Tgt Ion: 117 Resp: 5041

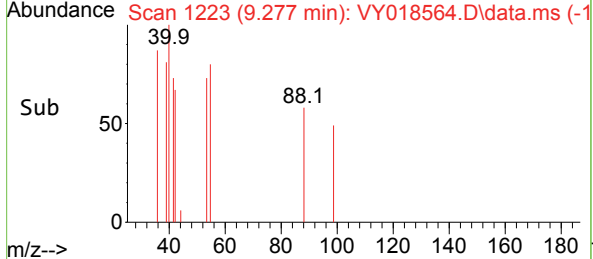
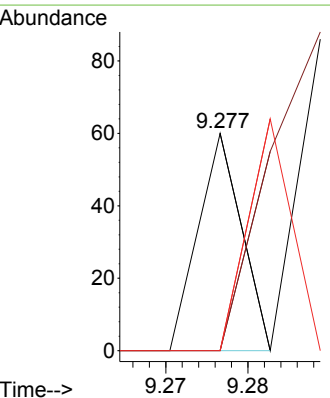
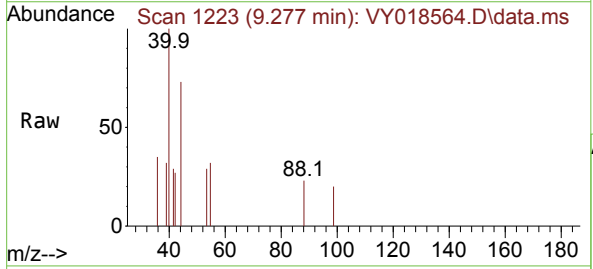
Ion	Ratio	Lower	Upper
117	100		
119	3.1	75.8	113.6#
121	0.0	24.0	36.0#

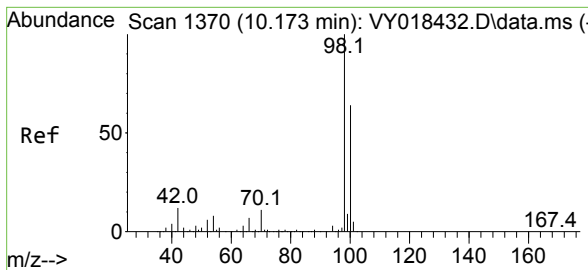


#49
 1,4-Dioxane
 Concen: 2.303 ug/l
 RT: 9.277 min Scan# 1223
 Delta R.T. -0.024 min
 Lab File: VY018564.D
 Acq: 11 Jun 2024 18:00

Tgt Ion: 88 Resp: 22

Ion	Ratio	Lower	Upper
88	100		
43	236.4	0.0	0.0#
58	104.5	49.3	73.9#

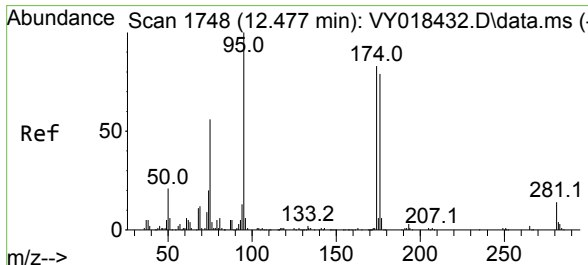
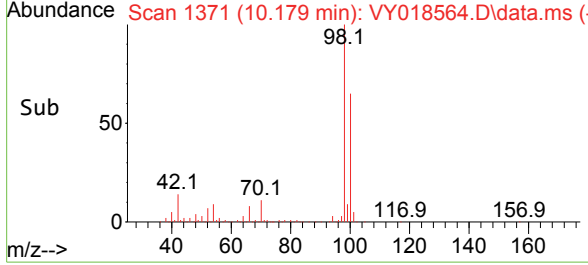
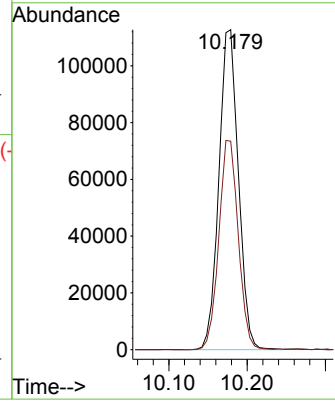
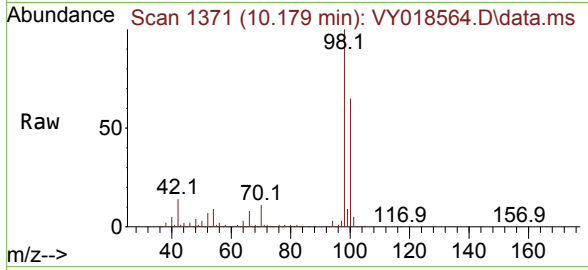




#50
 Toluene-d8
 Concen: 40.378 ug/l
 RT: 10.179 min Scan# 11
 Delta R.T. 0.006 min
 Lab File: VY018564.D
 Acq: 11 Jun 2024 18:00

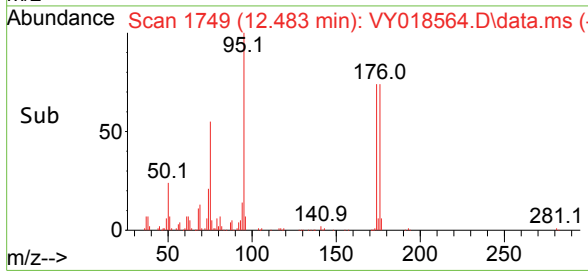
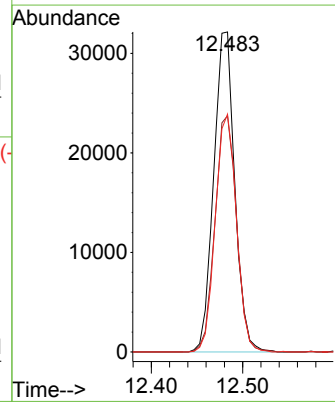
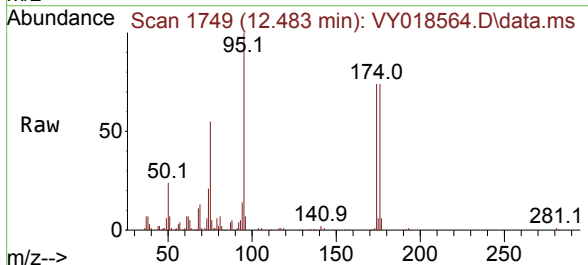
Instrument :
 MSVOA_Y
 ClientSampleId :

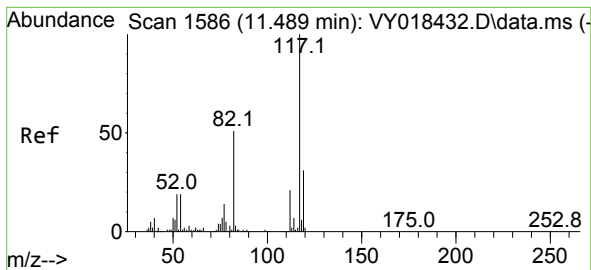
Tgt Ion: 98 Resp: 195080
 Ion Ratio Lower Upper
 98 100
 100 65.2 52.0 78.0



#62
 4-Bromofluorobenzene
 Concen: 34.235 ug/l
 RT: 12.483 min Scan# 1749
 Delta R.T. 0.006 min
 Lab File: VY018564.D
 Acq: 11 Jun 2024 18:00

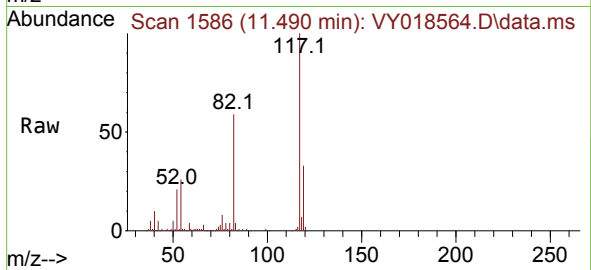
Tgt Ion: 95 Resp: 51498
 Ion Ratio Lower Upper
 95 100
 174 75.7 0.0 175.6
 176 74.4 0.0 171.4





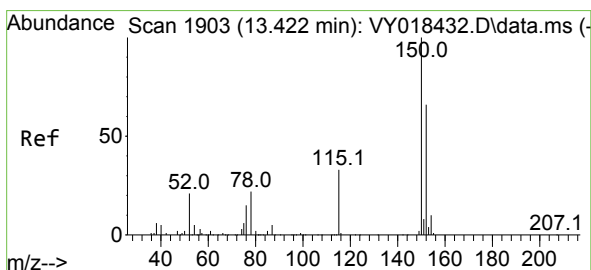
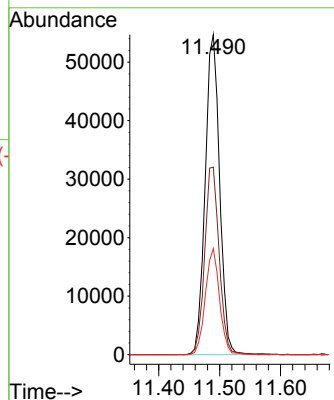
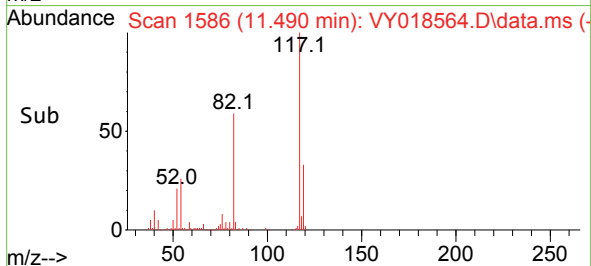
#63
 Chlorobenzene-d5
 Concen: 50.000 ug/l
 RT: 11.490 min Scan# 11
 Delta R.T. 0.000 min
 Lab File: VY018564.D
 Acq: 11 Jun 2024 18:00

Instrument : MSVOA_Y
 ClientSampleId :

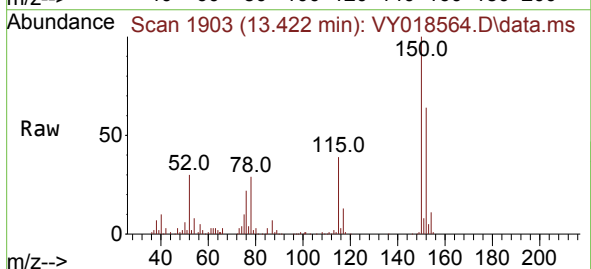


Tgt Ion:117 Resp: 90303

Ion	Ratio	Lower	Upper
117	100		
82	58.6	42.4	63.6
119	33.1	25.9	38.9

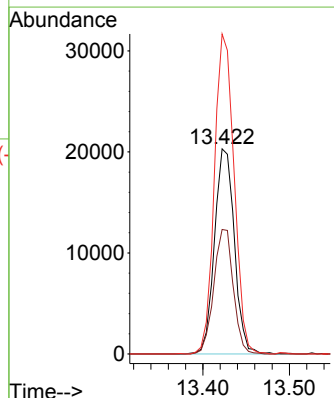
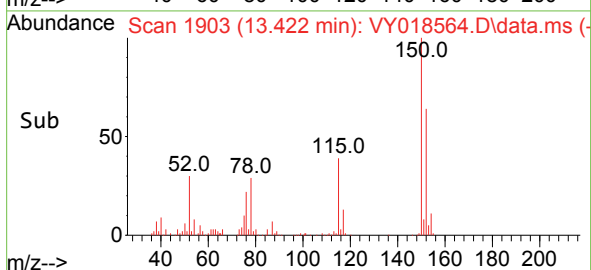


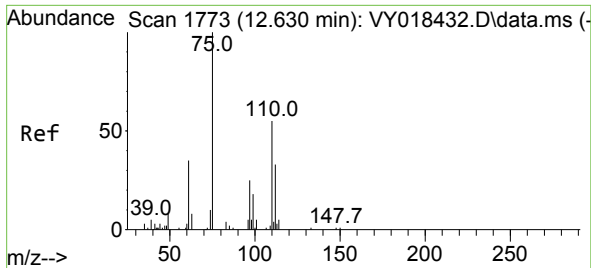
#72
 1,4-Dichlorobenzene-d4
 Concen: 50.000 ug/l
 RT: 13.422 min Scan# 1903
 Delta R.T. 0.000 min
 Lab File: VY018564.D
 Acq: 11 Jun 2024 18:00



Tgt Ion:152 Resp: 32362

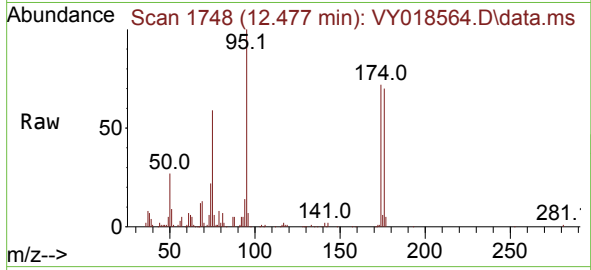
Ion	Ratio	Lower	Upper
152	100		
115	59.5	28.2	84.7
150	154.5	0.0	345.6



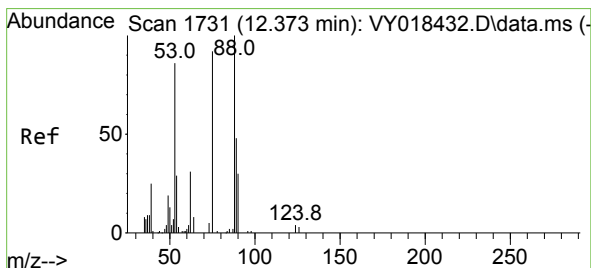
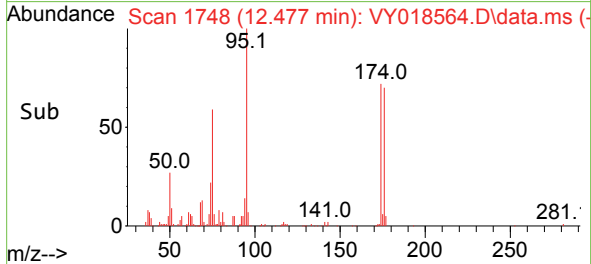
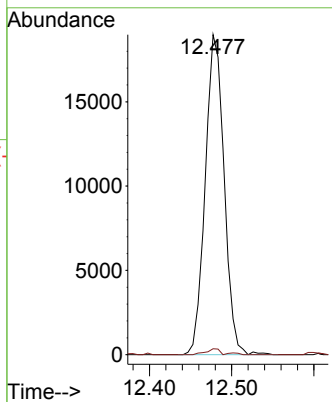


#76
 1,2,3-Trichloropropane
 Concen: 75.591 ug/l
 RT: 12.477 min Scan# 1748
 Delta R.T. -0.152 min
 Lab File: VY018564.D
 Acq: 11 Jun 2024 18:00

Instrument : MSVOA_Y
 ClientSampleId :



Tgt Ion: 75 Resp: 30334
 Ion Ratio Lower Upper
 75 100
 77 1.4 0.0 0.0#



#81
 trans-1,4-Dichloro-2-butene
 Concen: 158.811 ug/l
 RT: 12.477 min Scan# 1748
 Delta R.T. 0.104 min
 Lab File: VY018564.D
 Acq: 11 Jun 2024 18:00

Tgt Ion: 75 Resp: 30334
 Ion Ratio Lower Upper
 75 100
 53 0.0 66.8 100.2#
 89 0.1 35.8 53.6#

