

Data Path : Z:\voasrv\HPCHEM1\MSVOA_Y\Data\VY061925\
 Data File : VY022756.D
 Acq On : 19 Jun 2025 15:36
 Operator : SY/MD
 Sample : VIBLK
 Misc : 5.00g/5.0mL/MSVOA_Y/SOIL
 ALS Vial : 16 Sample Multiplier: 1

Instrument :
 MSVOA_Y
 ClientSampleId :
 VIBLK

Quant Time: Jun 20 03:00:34 2025
 Quant Method : Z:\voasrv\HPCHEM1\MSVOA_Y\methods\82Y060225S.M
 Quant Title : SW846 8260
 QLast Update : Tue Jun 10 15:26:14 2025
 Response via : Initial Calibration

Compound	R.T.	QIon	Response	Conc	Units	Dev(Min)

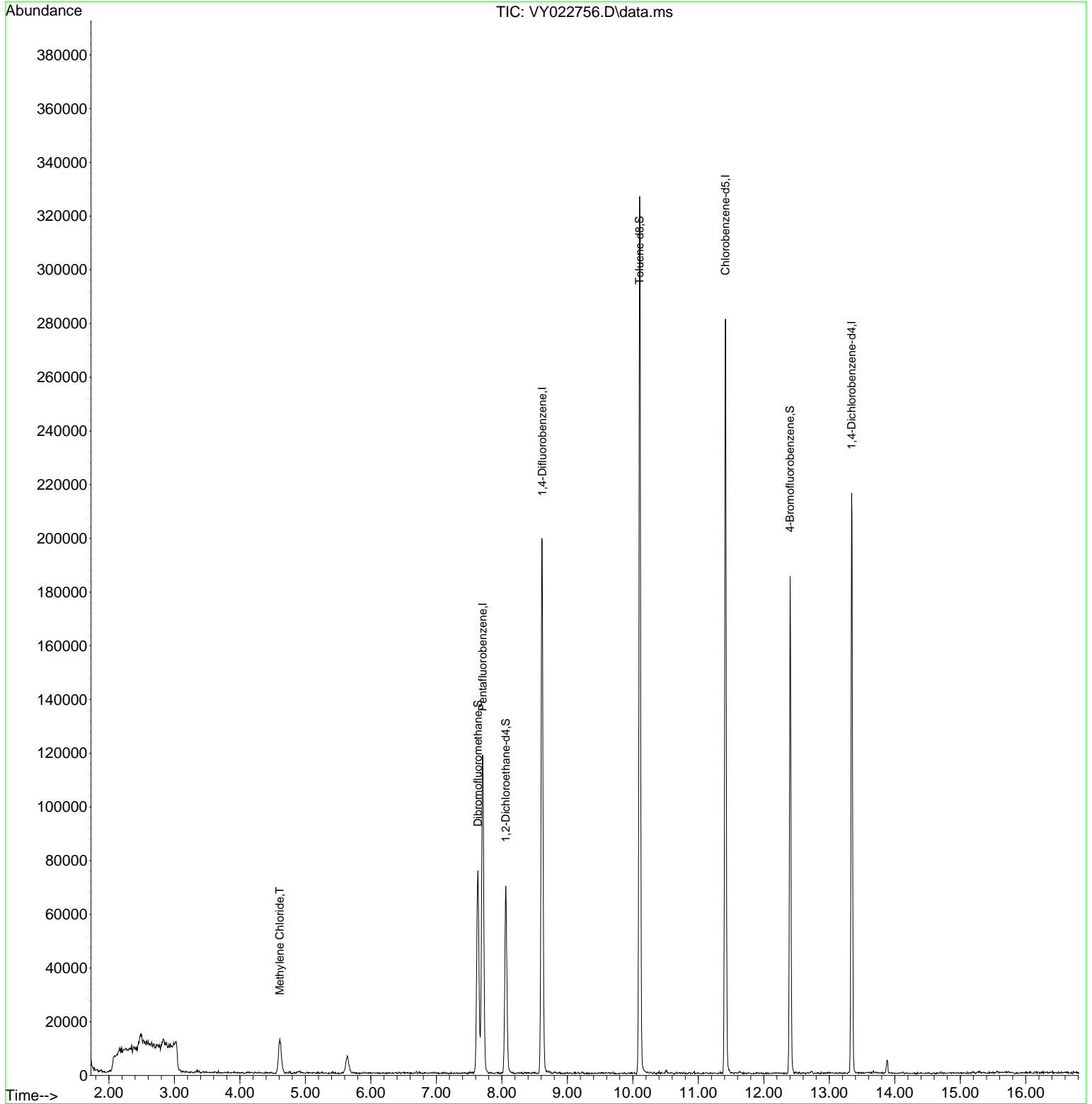
Internal Standards						
1) Pentafluorobenzene	7.707	168	86745	50.000	ug/l	0.00
34) 1,4-Difluorobenzene	8.616	114	166831	50.000	ug/l	0.00
63) Chlorobenzene-d5	11.414	117	137821	50.000	ug/l	0.00
72) 1,4-Dichlorobenzene-d4	13.340	152	49912	50.000	ug/l	0.00
System Monitoring Compounds						
33) 1,2-Dichloroethane-d4	8.061	65	51832	53.424	ug/l	0.00
Spiked Amount	50.000	Range	50 - 163	Recovery	=	106.840%
35) Dibromofluoromethane	7.634	113	50815	51.030	ug/l	0.00
Spiked Amount	50.000	Range	54 - 147	Recovery	=	102.060%
50) Toluene-d8	10.103	98	201984	50.200	ug/l	0.00
Spiked Amount	50.000	Range	58 - 134	Recovery	=	100.400%
62) 4-Bromofluorobenzene	12.401	95	47948	39.996	ug/l	0.00
Spiked Amount	50.000	Range	30 - 143	Recovery	=	80.000%
Target Compounds						
20) Methylene Chloride	4.610	84	9178	8.200	ug/l	95

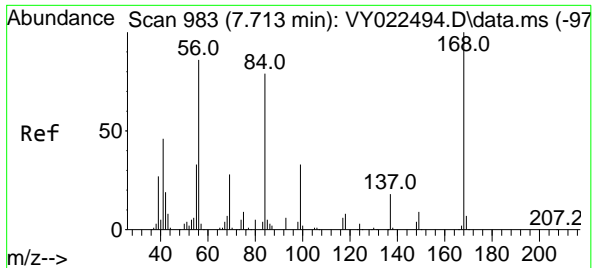
(#) = qualifier out of range (m) = manual integration (+) = signals summed

Data Path : Z:\voasrv\HPCHEM1\MSVOA_Y\Data\VY061925\
 Data File : VY022756.D
 Acq On : 19 Jun 2025 15:36
 Operator : SY/MD
 Sample : VIBLK
 Misc : 5.00g/5.0mL/MSVOA_Y/SOIL
 ALS Vial : 16 Sample Multiplier: 1

Instrument :
 MSVOA_Y
 ClientSampleId :
 VIBLK

Quant Time: Jun 20 03:00:34 2025
 Quant Method : Z:\voasrv\HPCHEM1\MSVOA_Y\methods\82Y060225S.M
 Quant Title : SW846 8260
 QLast Update : Tue Jun 10 15:26:14 2025
 Response via : Initial Calibration

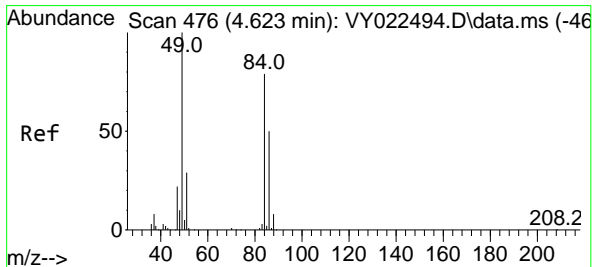
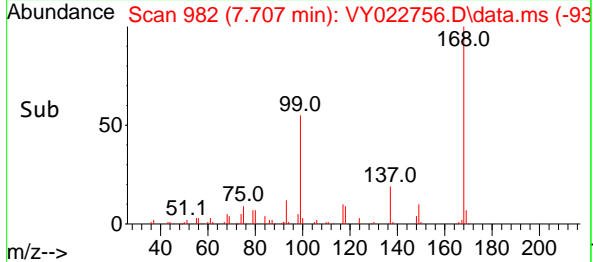
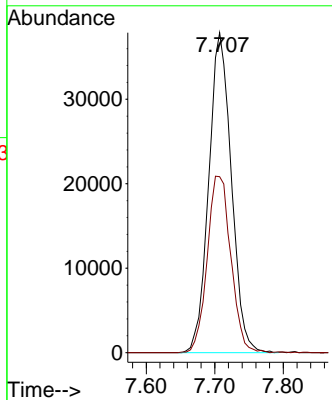
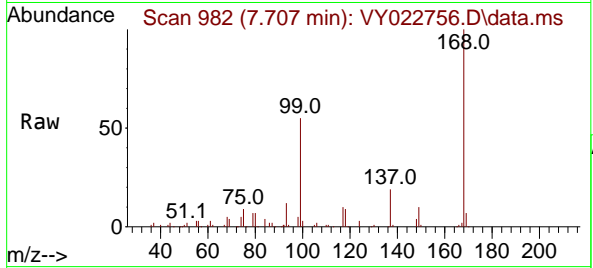




#1
 Pentafluorobenzene
 Concen: 50.000 ug/l
 RT: 7.707 min Scan# 91
 Delta R.T. -0.006 min
 Lab File: VY022756.D
 Acq: 19 Jun 2025 15:36

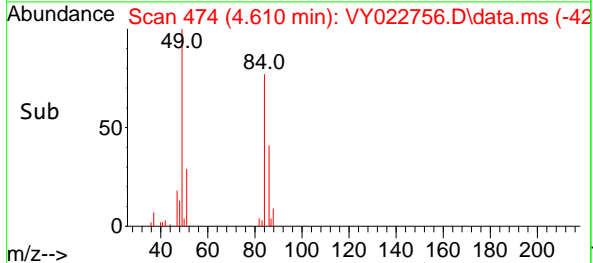
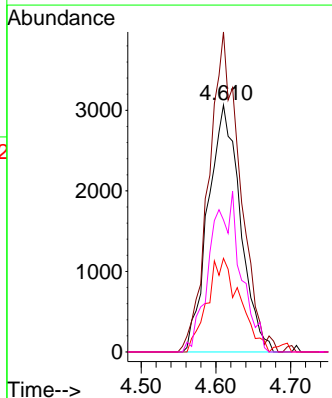
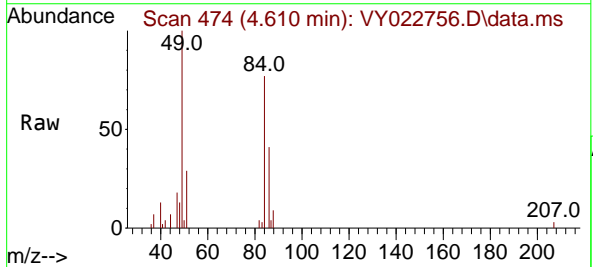
Instrument :
 MSVOA_Y
 ClientSampleId :
 VIBLK

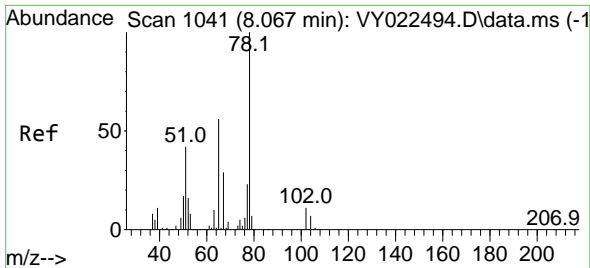
Tgt Ion:168 Resp: 86745
 Ion Ratio Lower Upper
 168 100
 99 55.0 44.3 66.5



#20
 Methylene Chloride
 Concen: 8.200 ug/l
 RT: 4.610 min Scan# 474
 Delta R.T. -0.012 min
 Lab File: VY022756.D
 Acq: 19 Jun 2025 15:36

Tgt Ion: 84 Resp: 9178
 Ion Ratio Lower Upper
 84 100
 49 129.6 101.9 152.9
 51 37.9 29.8 44.8
 86 53.5 51.3 76.9

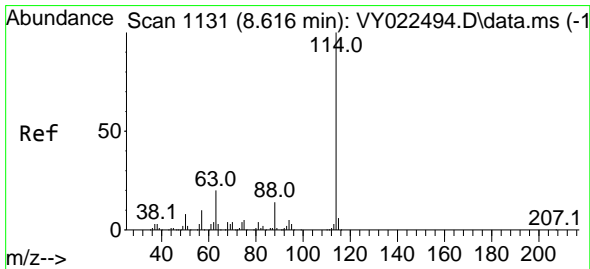
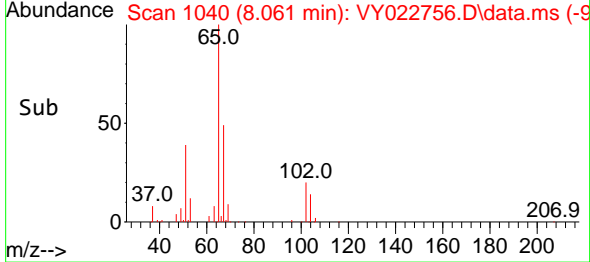
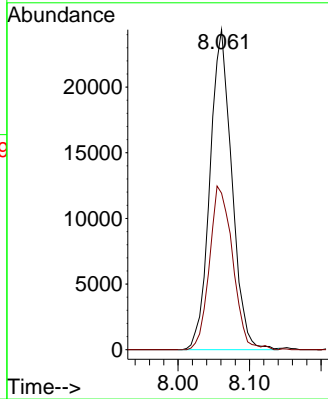
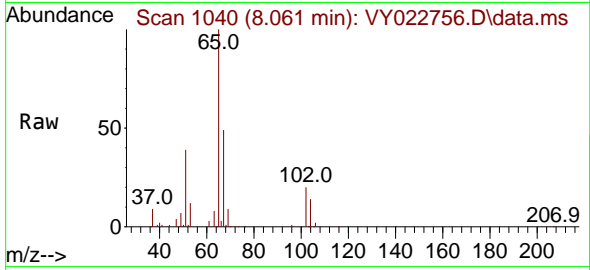




#33
 1,2-Dichloroethane-d4
 Concen: 53.424 ug/l
 RT: 8.061 min Scan# 1041
 Delta R.T. -0.006 min
 Lab File: VY022756.D
 Acq: 19 Jun 2025 15:36

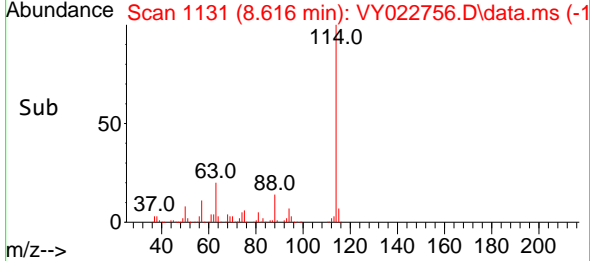
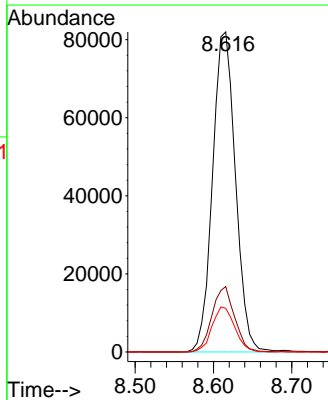
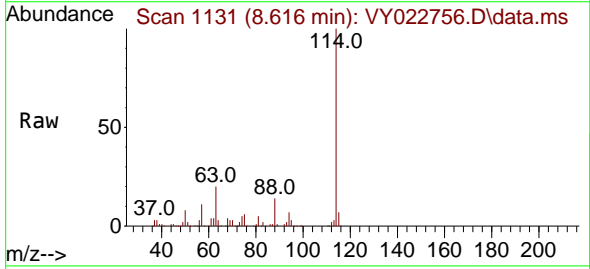
Instrument : MSVOA_Y
 ClientSampleId : VIBLK

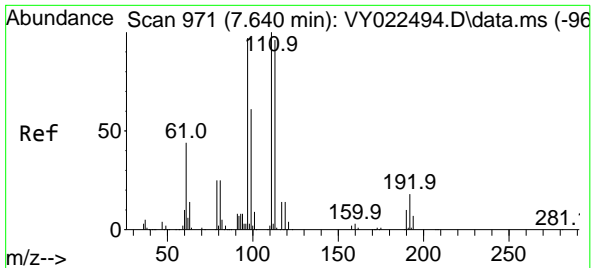
Tgt Ion: 65 Resp: 51832
 Ion Ratio Lower Upper
 65 100
 67 54.1 0.0 103.4



#34
 1,4-Difluorobenzene
 Concen: 50.000 ug/l
 RT: 8.616 min Scan# 1131
 Delta R.T. -0.000 min
 Lab File: VY022756.D
 Acq: 19 Jun 2025 15:36

Tgt Ion:114 Resp: 166831
 Ion Ratio Lower Upper
 114 100
 63 20.5 0.0 40.8
 88 13.6 0.0 27.8

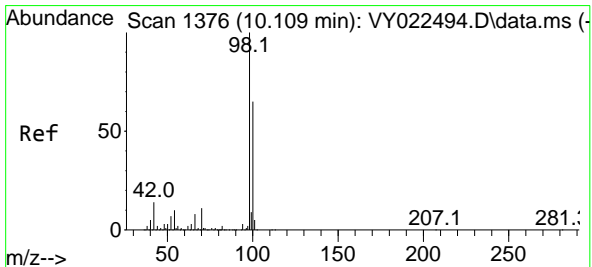
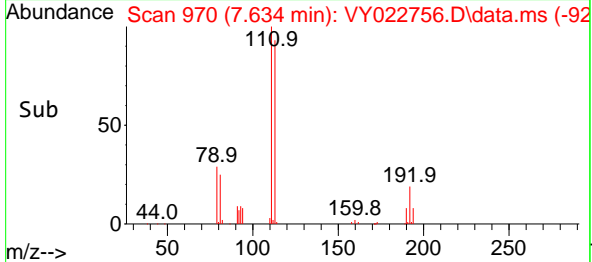
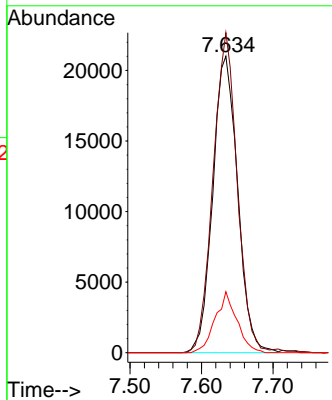
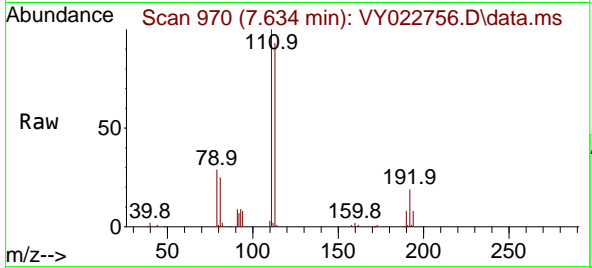




#35
 Dibromofluoromethane
 Concen: 51.030 ug/l
 RT: 7.634 min Scan# 91
 Delta R.T. -0.006 min
 Lab File: VY022756.D
 Acq: 19 Jun 2025 15:36

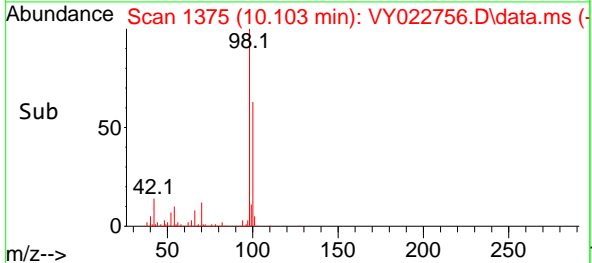
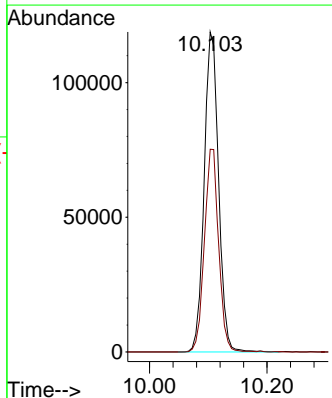
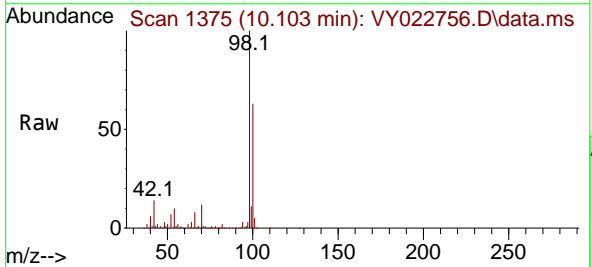
Instrument :
 MSVOA_Y
 ClientSampleId :
 VIBLK

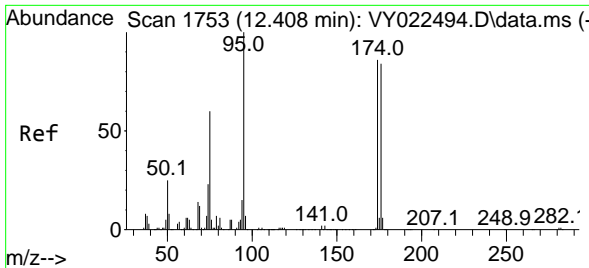
Tgt Ion:113 Resp: 50815
 Ion Ratio Lower Upper
 113 100
 111 105.1 81.1 121.7
 192 18.0 14.2 21.2



#50
 Toluene-d8
 Concen: 50.200 ug/l
 RT: 10.103 min Scan# 1375
 Delta R.T. -0.006 min
 Lab File: VY022756.D
 Acq: 19 Jun 2025 15:36

Tgt Ion: 98 Resp: 201984
 Ion Ratio Lower Upper
 98 100
 100 62.8 51.4 77.0

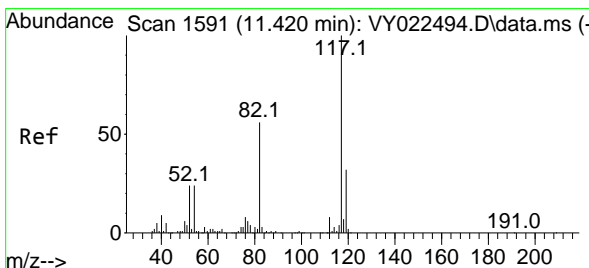
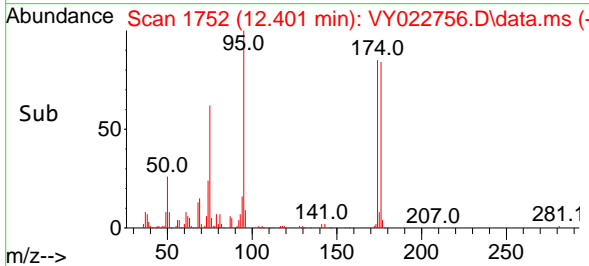
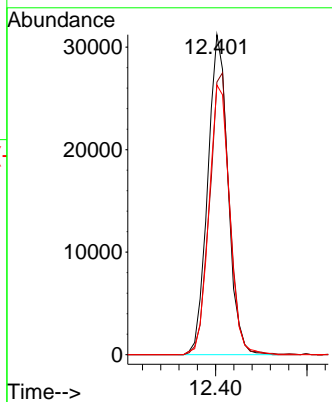
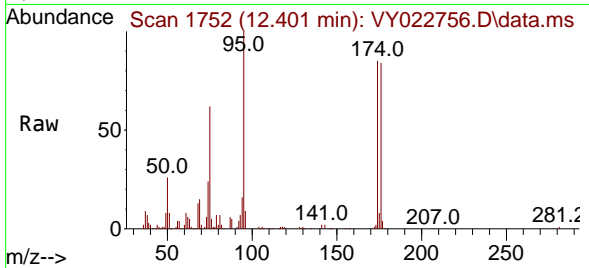




#62
 4-Bromofluorobenzene
 Concen: 39.996 ug/l
 RT: 12.401 min Scan# 11
 Delta R.T. -0.006 min
 Lab File: VY022756.D
 Acq: 19 Jun 2025 15:36

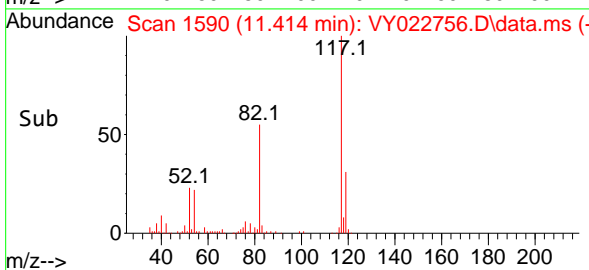
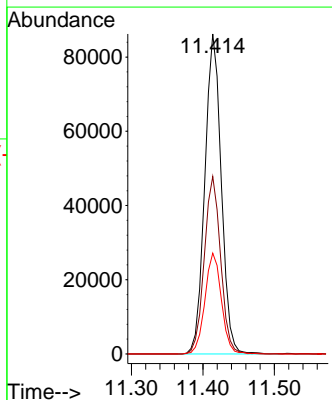
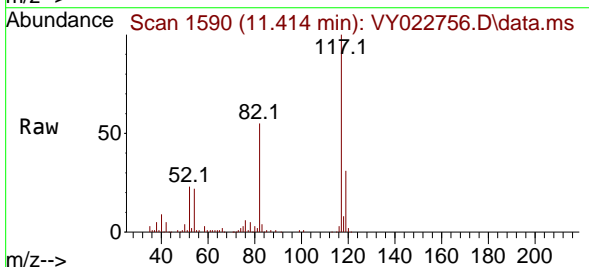
Instrument : MSVOA_Y
 ClientSampleId : VIBLK

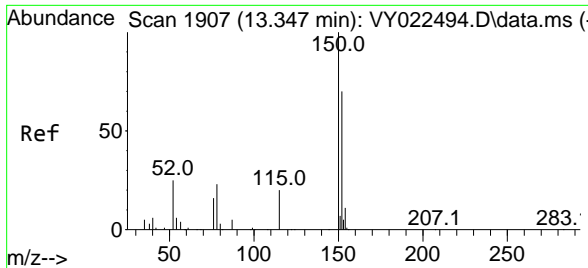
Tgt Ion	Resp	Lower	Upper
95	47948		
174	88.1	0.0	170.0
176	86.1	0.0	166.2



#63
 Chlorobenzene-d5
 Concen: 50.000 ug/l
 RT: 11.414 min Scan# 1590
 Delta R.T. -0.006 min
 Lab File: VY022756.D
 Acq: 19 Jun 2025 15:36

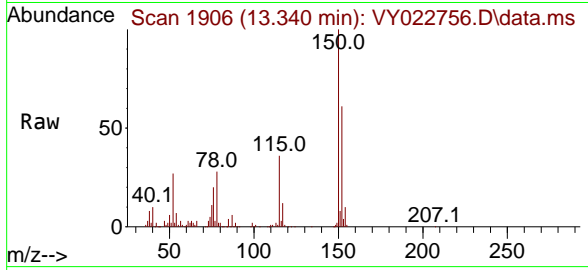
Tgt Ion	Resp	Lower	Upper
117	137821		
82	55.4	44.6	66.8
119	31.5	25.4	38.0





#72
 1,4-Dichlorobenzene-d4
 Concen: 50.000 ug/l
 RT: 13.340 min Scan# 1906
 Delta R.T. -0.006 min
 Lab File: VY022756.D
 Acq: 19 Jun 2025 15:36

Instrument :
 MSVOA_Y
 ClientSampleId :
 VIBLK



Tgt Ion:152 Resp: 49912

Ion	Ratio	Lower	Upper
152	100		
115	58.4	28.9	86.7
150	158.5	0.0	349.6

