

Data Path : Z:\voasrv\HPCHEM1\MSVOA_Y\Data\VY062024\
 Data File : VY018653.D
 Acq On : 20 Jun 2024 13:50
 Operator : SY/MD
 Sample : P2943-02
 Misc : 5.06g/5.0mL/MSVOA_Y/SOIL/B
 ALS Vial : 8 Sample Multiplier: 1

Instrument :
 MSVOA_Y
 ClientSampleId :

Quant Time: Jun 21 01:06:16 2024
 Quant Method : Z:\voasrv\HPCHEM1\MSVOA_Y\methods\82Y061324S.M
 Quant Title : SW846 8260
 QLast Update : Fri Jun 14 07:08:24 2024
 Response via : Initial Calibration

Compound	R.T.	QIon	Response	Conc	Units	Dev(Min)

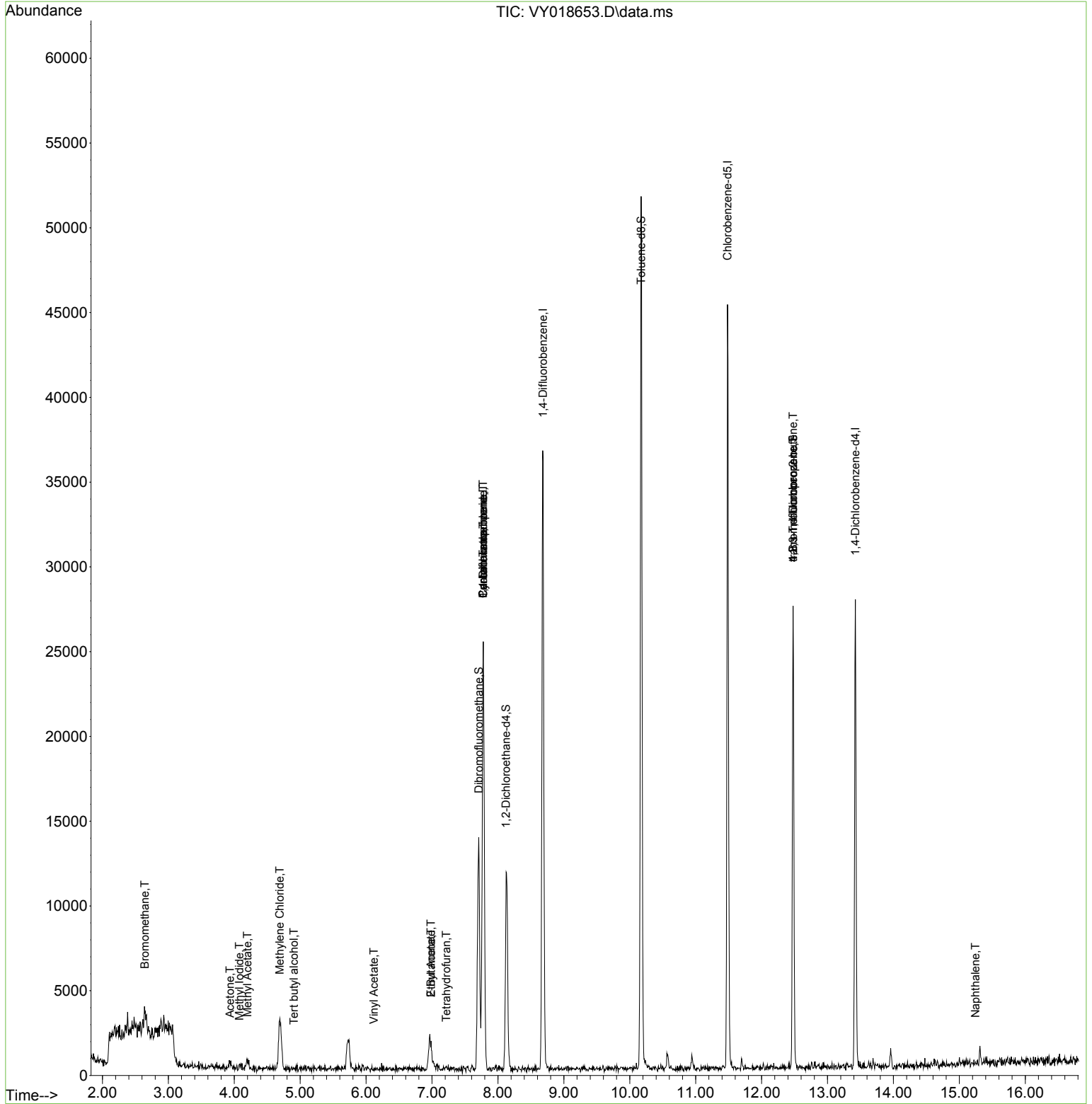
Internal Standards						
1) Pentafluorobenzene	7.777	168	19274	50.000	ug/l	0.00
34) 1,4-Difluorobenzene	8.685	114	32596	50.000	ug/l	0.00
63) Chlorobenzene-d5	11.483	117	24599	50.000	ug/l	0.00
72) 1,4-Dichlorobenzene-d4	13.422	152	7298	50.000	ug/l	0.00
System Monitoring Compounds						
33) 1,2-Dichloroethane-d4	8.124	65	9342	48.143	ug/l	0.00
Spiked Amount	50.000	Range	50 - 163	Recovery	=	96.280%
35) Dibromofluoromethane	7.710	113	9802	49.296	ug/l	0.00
Spiked Amount	50.000	Range	54 - 147	Recovery	=	98.600%
50) Toluene-d8	10.173	98	34600	45.248	ug/l	0.00
Spiked Amount	50.000	Range	58 - 134	Recovery	=	90.500%
62) 4-Bromofluorobenzene	12.477	95	8114	33.604	ug/l	0.00
Spiked Amount	50.000	Range	30 - 143	Recovery	=	67.200%
Target Compounds						
					Qvalue	
5) Bromomethane	2.644	94	773	3.212	ug/l #	58
10) Methyl Iodide	4.076	142	138	1.312	ug/l #	42
11) Tert butyl alcohol	4.905	59	47	1.347	ug/l #	88
16) Acetone	3.936	43	704	17.832	ug/l #	71
18) Methyl Acetate	4.198	43	224	2.237	ug/l #	46
20) Methylene Chloride	4.692	84	2521	1.708	ug/l	86
23) Vinyl Acetate	6.118	43	20	23.729	ug/l #	67
25) 2-Butanone	6.984	43	179	3.025	ug/l #	41
29) Tetrahydrofuran	7.216	42	78	2.148	ug/l #	26
31) Cyclohexane	7.777	56	407	1.369	ug/l #	1
36) 1,1-Dichloropropene	7.777	75	1557	5.689	ug/l #	40
37) Ethyl Acetate	6.984	43	179	1.387	ug/l #	88
38) Carbon Tetrachloride	7.777	117	2126	7.404	ug/l #	13
76) 1,2,3-Trichloropropane	12.477	75	4425	64.638	ug/l #	100
81) trans-1,4-Dichloro-2-b...	12.477	75	4425	169.311	ug/l #	16
95) Naphthalene	15.245	128	224	1.013	ug/l #	69

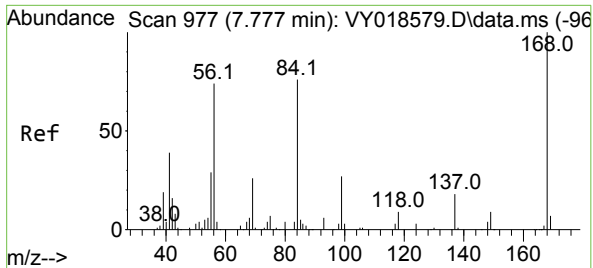
(#) = qualifier out of range (m) = manual integration (+) = signals summed

Data Path : Z:\voasrv\HPCHEM1\MSVOA_Y\Data\VY062024\
 Data File : VY018653.D
 Acq On : 20 Jun 2024 13:50
 Operator : SY/MD
 Sample : P2943-02
 Misc : 5.06g/5.0mL/MSVOA_Y/SOIL/B
 ALS Vial : 8 Sample Multiplier: 1

Instrument :
 MSVOA_Y
 ClientSampleId :

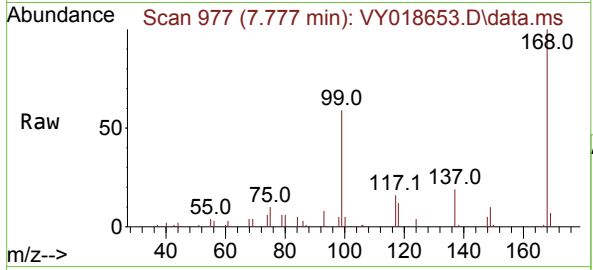
Quant Time: Jun 21 01:06:16 2024
 Quant Method : Z:\voasrv\HPCHEM1\MSVOA_Y\methods\82Y061324S.M
 Quant Title : SW846 8260
 QLast Update : Fri Jun 14 07:08:24 2024
 Response via : Initial Calibration



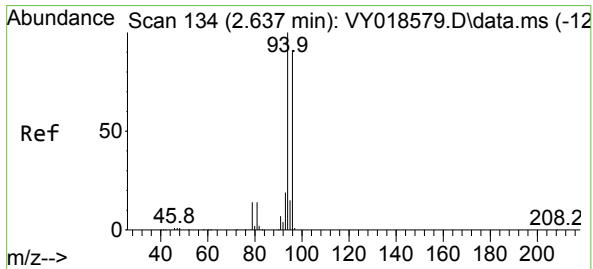
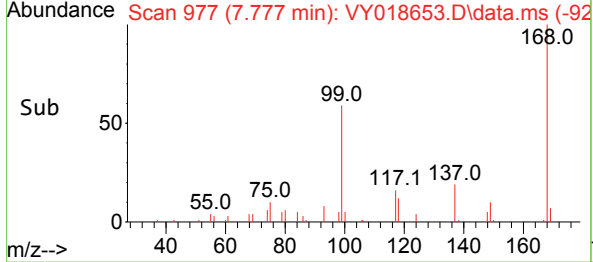
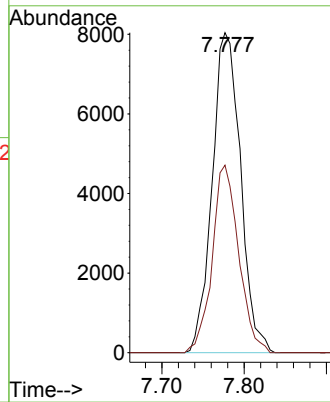


#1
 Pentafluorobenzene
 Concen: 50.000 ug/l
 RT: 7.777 min Scan# 91
 Delta R.T. -0.000 min
 Lab File: VY018653.D
 Acq: 20 Jun 2024 13:50

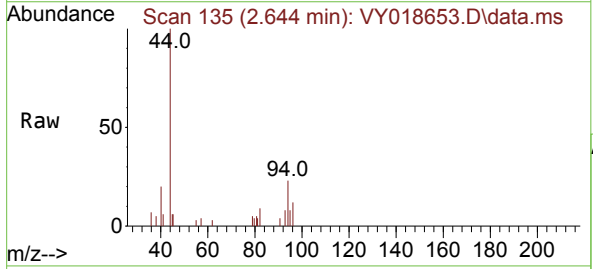
Instrument : MSVOA_Y
 ClientSampleId :



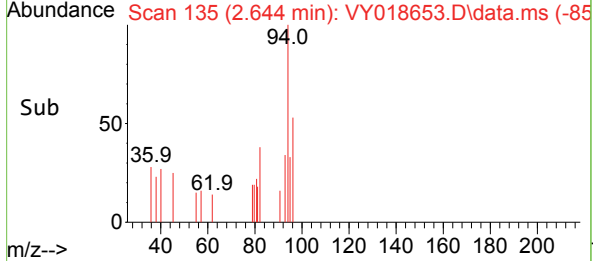
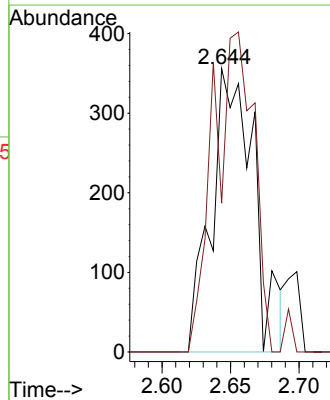
Tgt Ion:168 Resp: 19274
 Ion Ratio Lower Upper
 168 100
 99 58.6 39.1 58.7

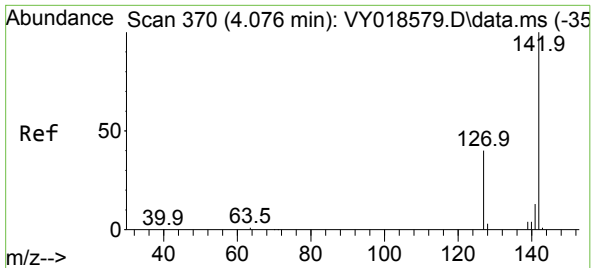


#5
 Bromomethane
 Concen: 3.212 ug/l
 RT: 2.644 min Scan# 135
 Delta R.T. 0.006 min
 Lab File: VY018653.D
 Acq: 20 Jun 2024 13:50



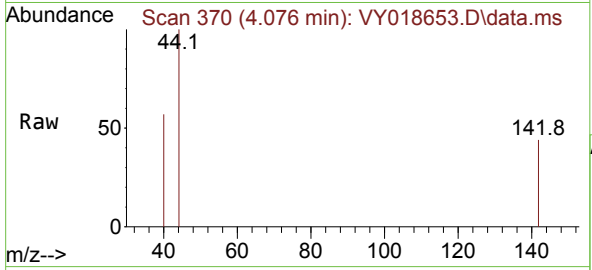
Tgt Ion: 94 Resp: 773
 Ion Ratio Lower Upper
 94 100
 96 52.5 74.1 111.1#



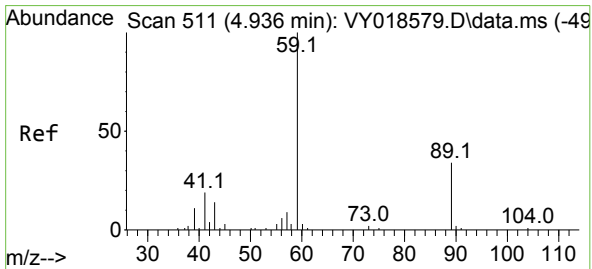
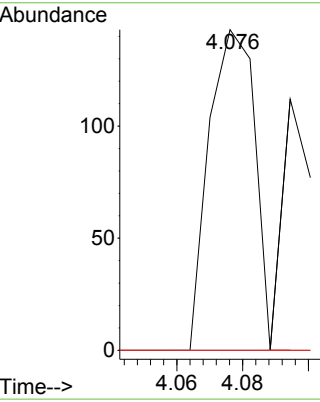
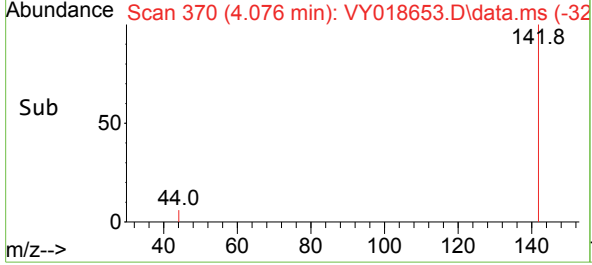


#10
 Methyl Iodide
 Concen: 1.312 ug/l
 RT: 4.076 min Scan# 31
 Delta R.T. 0.000 min
 Lab File: VY018653.D
 Acq: 20 Jun 2024 13:50

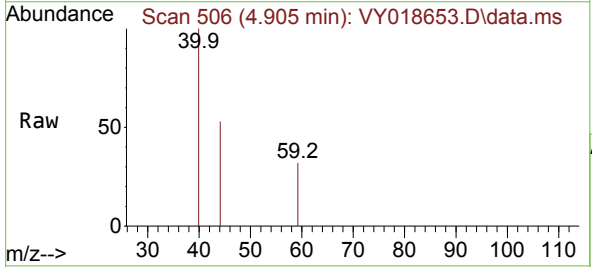
Instrument :
 MSVOA_Y
 ClientSampleId :



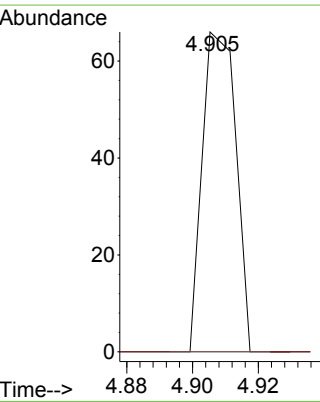
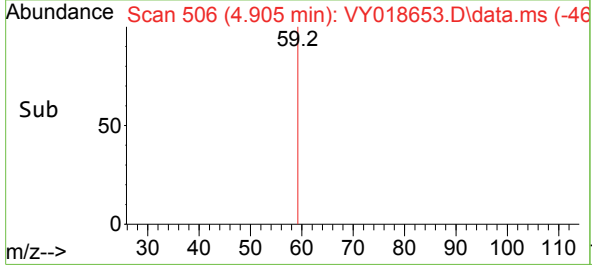
Tgt Ion:142 Resp: 138
 Ion Ratio Lower Upper
 142 100
 127 0.0 32.8 49.2#
 141 0.0 11.4 17.2#

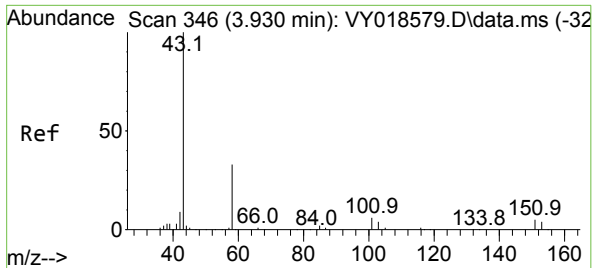


#11
 Tert butyl alcohol
 Concen: 1.347 ug/l
 RT: 4.905 min Scan# 506
 Delta R.T. -0.031 min
 Lab File: VY018653.D
 Acq: 20 Jun 2024 13:50



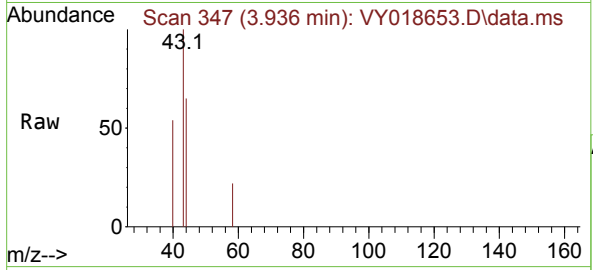
Tgt Ion: 59 Resp: 47
 Ion Ratio Lower Upper
 59 100
 57 0.0 3.0 4.6#



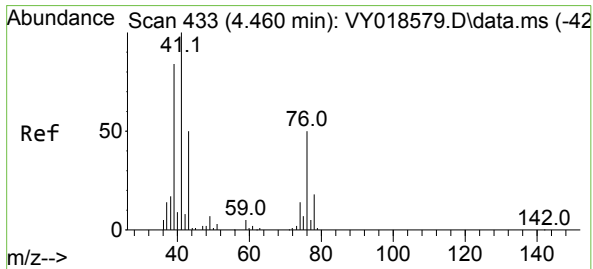
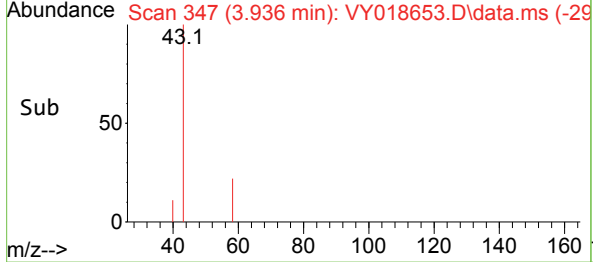
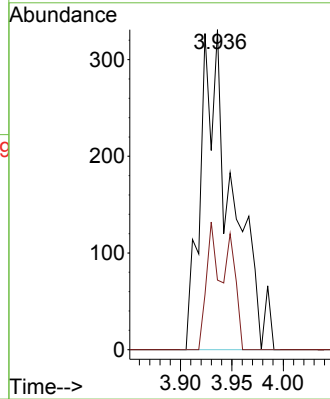


#16
 Acetone
 Concen: 17.832 ug/l
 RT: 3.936 min Scan# 34
 Delta R.T. 0.006 min
 Lab File: VY018653.D
 Acq: 20 Jun 2024 13:50

Instrument :
 MSVOA_Y
 ClientSampleId :

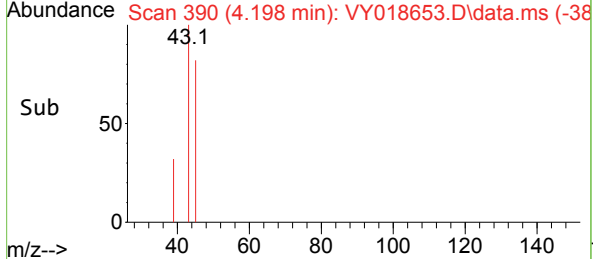
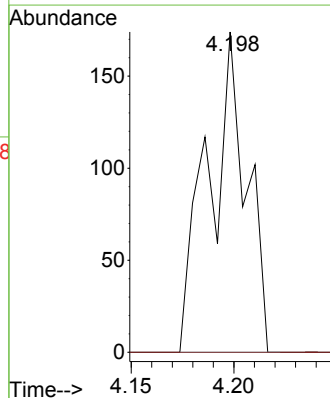
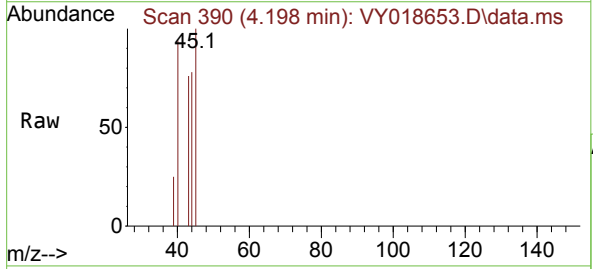


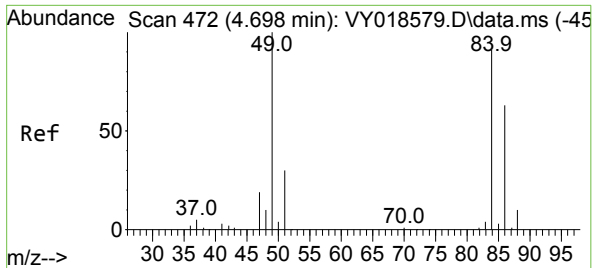
Tgt Ion: 43 Resp: 704
 Ion Ratio Lower Upper
 43 100
 58 21.8 31.7 47.5#



#18
 Methyl Acetate
 Concen: 2.237 ug/l
 RT: 4.198 min Scan# 390
 Delta R.T. -0.262 min
 Lab File: VY018653.D
 Acq: 20 Jun 2024 13:50

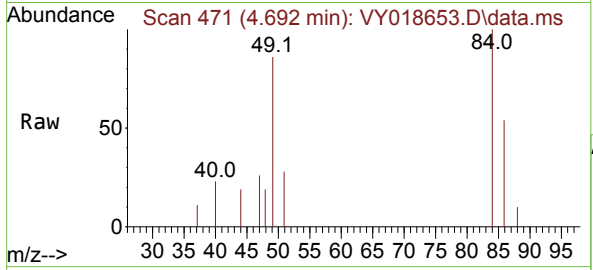
Tgt Ion: 43 Resp: 224
 Ion Ratio Lower Upper
 43 100
 74 0.0 23.3 34.9#





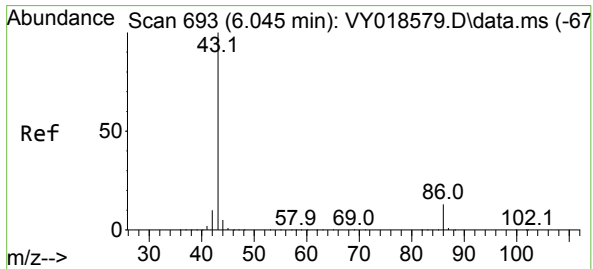
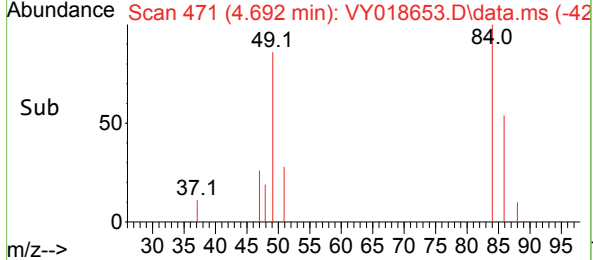
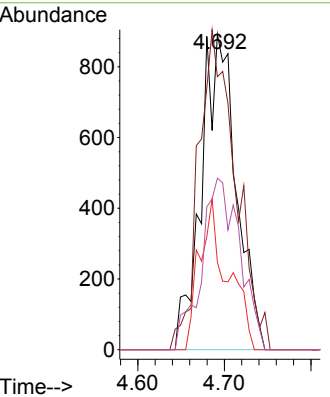
#20
 Methylene Chloride
 Concen: 1.708 ug/l
 RT: 4.692 min Scan# 41
 Delta R.T. -0.006 min
 Lab File: VY018653.D
 Acq: 20 Jun 2024 13:50

Instrument : MSVOA_Y
 ClientSampleId :



Tgt Ion: 84 Resp: 2521

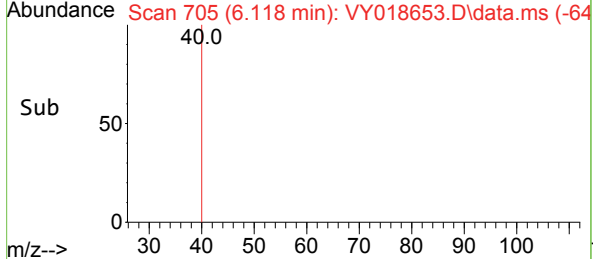
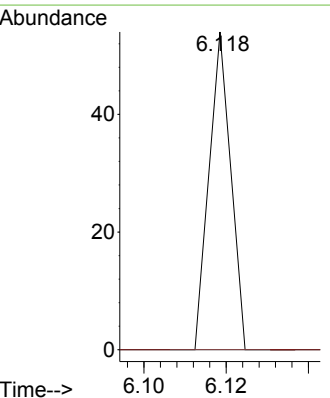
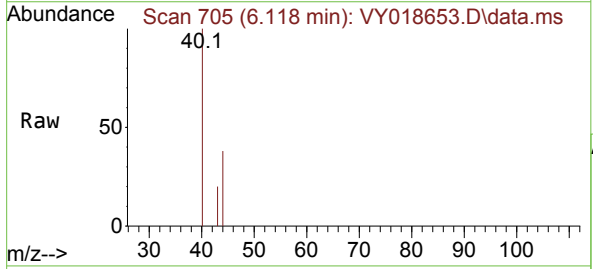
Ion	Ratio	Lower	Upper
84	100		
49	86.5	84.4	126.6
51	27.7	26.0	39.0
86	54.3	49.5	74.3

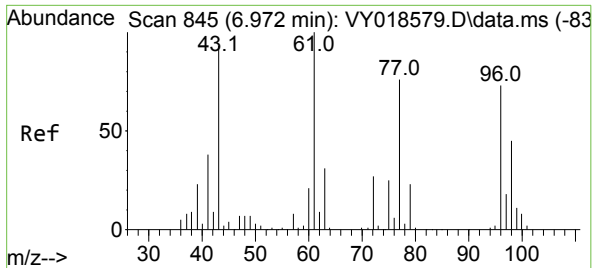


#23
 Vinyl Acetate
 Concen: 23.729 ug/l
 RT: 6.118 min Scan# 705
 Delta R.T. 0.073 min
 Lab File: VY018653.D
 Acq: 20 Jun 2024 13:50

Tgt Ion: 43 Resp: 20

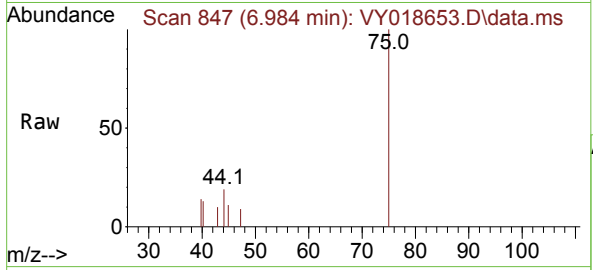
Ion	Ratio	Lower	Upper
43	100		
86	0.0	10.6	16.0#



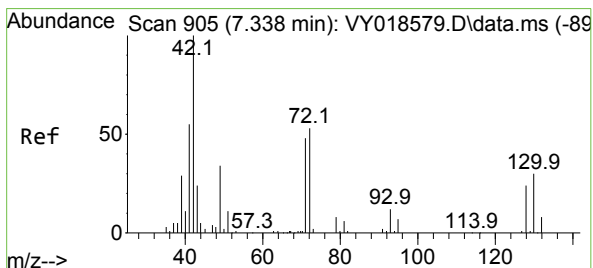
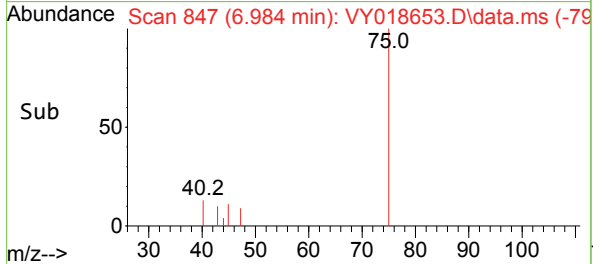
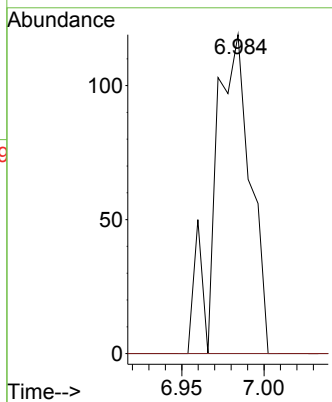


#25
 2-Butanone
 Concen: 3.025 ug/l
 RT: 6.984 min Scan# 845
 Delta R.T. 0.012 min
 Lab File: VY018653.D
 Acq: 20 Jun 2024 13:50

Instrument : MSVOA_Y
 ClientSampleId :

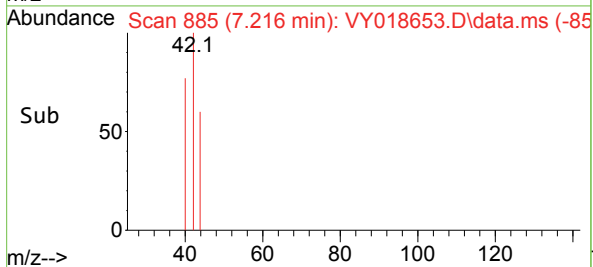
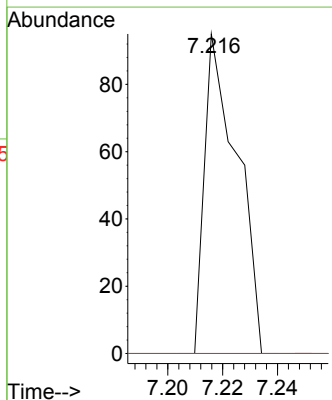
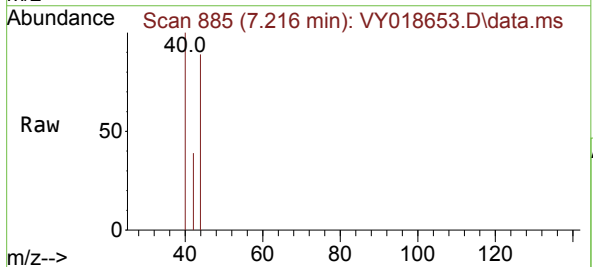


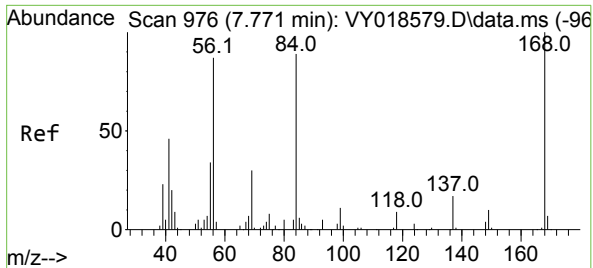
Tgt Ion: 43 Resp: 179
 Ion Ratio Lower Upper
 43 100
 72 0.0 27.3 40.9#



#29
 Tetrahydrofuran
 Concen: 2.148 ug/l
 RT: 7.216 min Scan# 885
 Delta R.T. -0.122 min
 Lab File: VY018653.D
 Acq: 20 Jun 2024 13:50

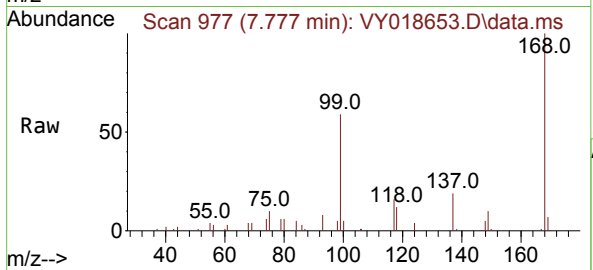
Tgt Ion: 42 Resp: 78
 Ion Ratio Lower Upper
 42 100
 72 0.0 43.0 64.4#
 71 0.0 40.8 61.2#



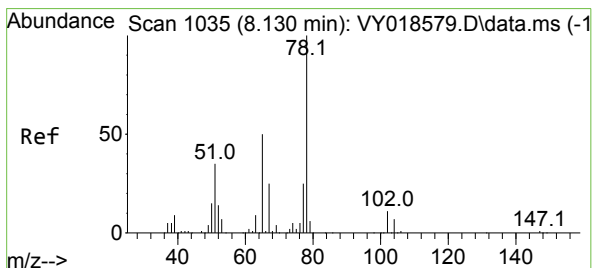
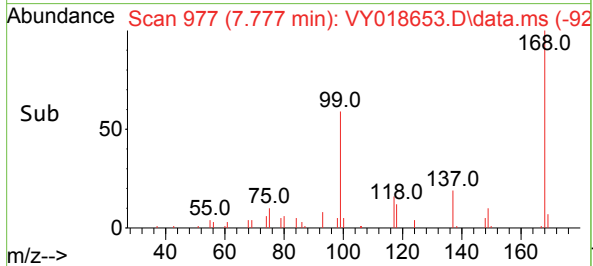
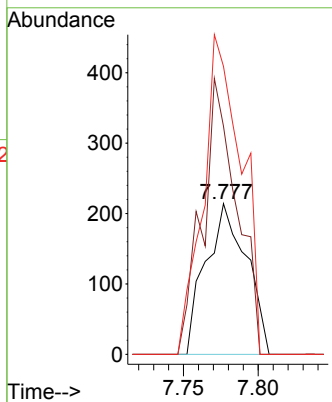


#31
 Cyclohexane
 Concen: 1.369 ug/l
 RT: 7.777 min Scan# 91
 Delta R.T. 0.006 min
 Lab File: VY018653.D
 Acq: 20 Jun 2024 13:50

Instrument :
 MSVOA_Y
 ClientSampleId :

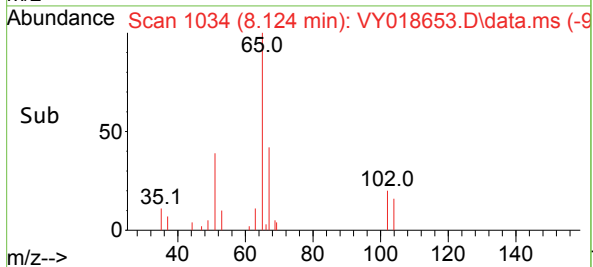
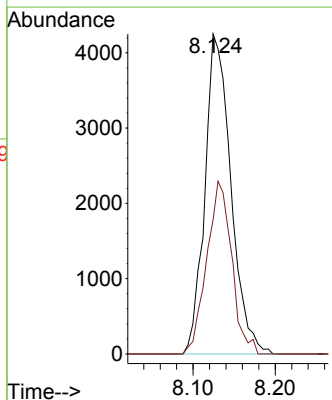
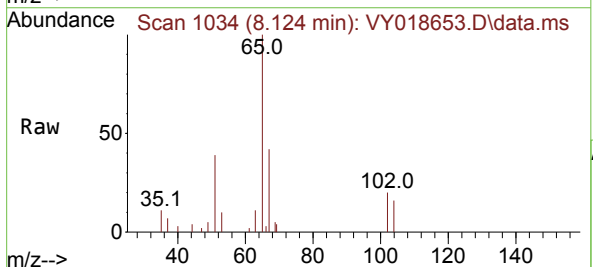


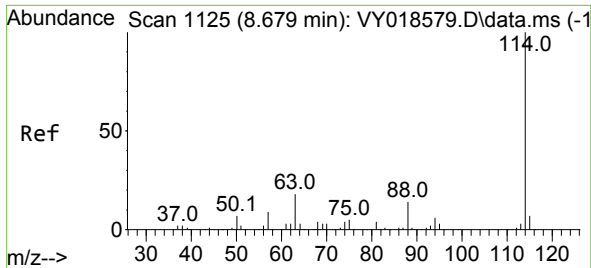
Tgt Ion: 56 Resp: 407
 Ion Ratio Lower Upper
 56 100
 69 151.4 28.7 43.1#
 84 191.1 77.7 116.5#



#33
 1,2-Dichloroethane-d4
 Concen: 48.143 ug/l
 RT: 8.124 min Scan# 1034
 Delta R.T. -0.006 min
 Lab File: VY018653.D
 Acq: 20 Jun 2024 13:50

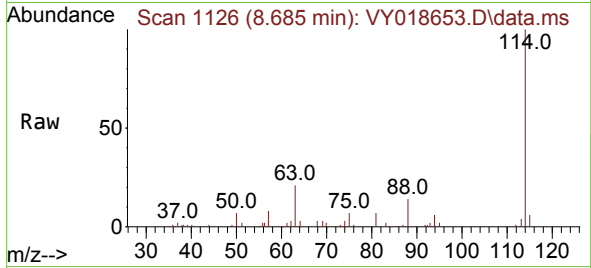
Tgt Ion: 65 Resp: 9342
 Ion Ratio Lower Upper
 65 100
 67 51.7 0.0 109.6



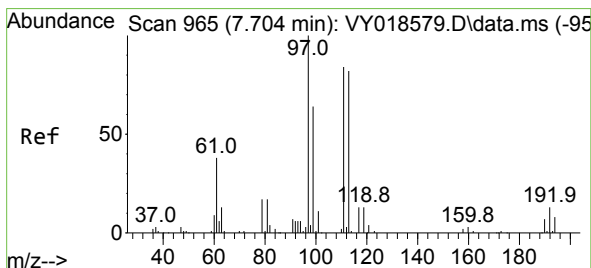
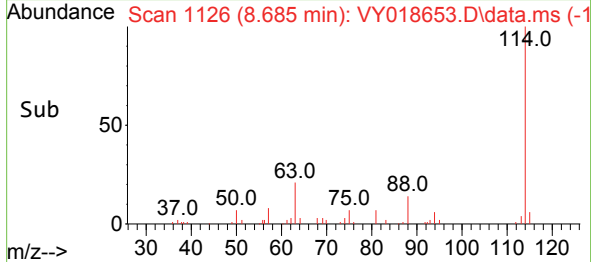
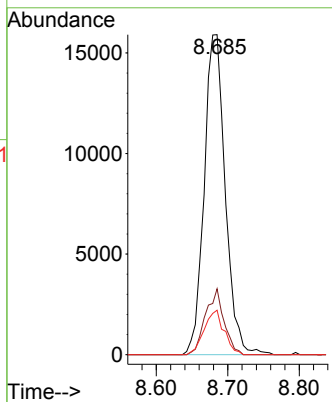


#34
 1,4-Difluorobenzene
 Concen: 50.000 ug/l
 RT: 8.685 min Scan# 1126
 Delta R.T. 0.006 min
 Lab File: VY018653.D
 Acq: 20 Jun 2024 13:50

Instrument : MSVOA_Y
 ClientSampleId :

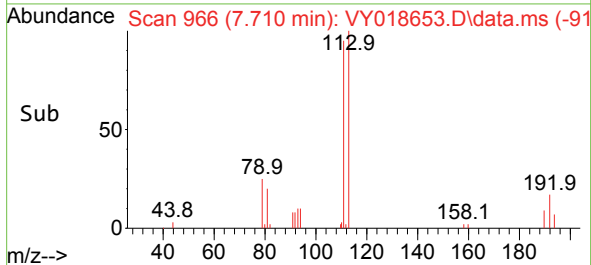
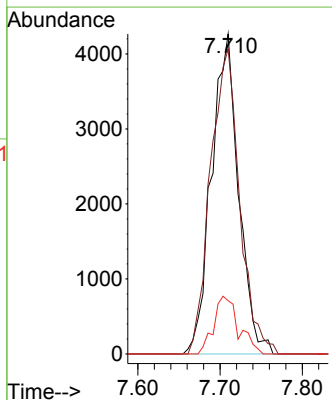
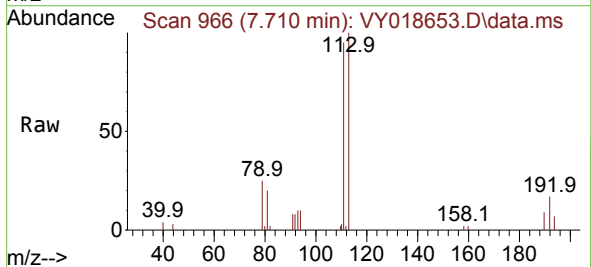


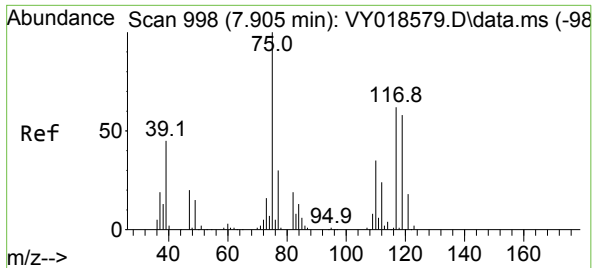
Tgt Ion:114 Resp: 32596
 Ion Ratio Lower Upper
 114 100
 63 20.6 0.0 35.0
 88 13.9 0.0 27.2



#35
 Dibromofluoromethane
 Concen: 49.296 ug/l
 RT: 7.710 min Scan# 966
 Delta R.T. 0.006 min
 Lab File: VY018653.D
 Acq: 20 Jun 2024 13:50

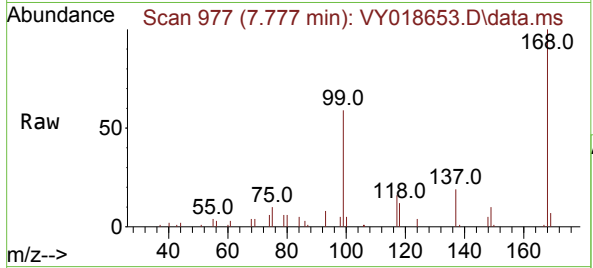
Tgt Ion:113 Resp: 9802
 Ion Ratio Lower Upper
 113 100
 111 102.2 82.2 123.4
 192 16.5 15.9 23.9



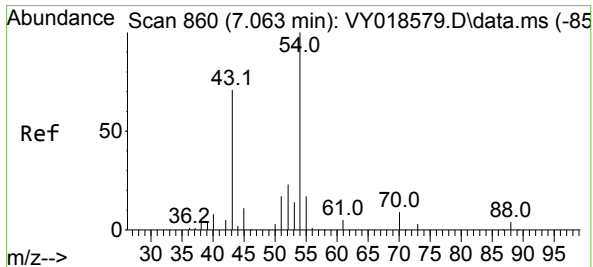
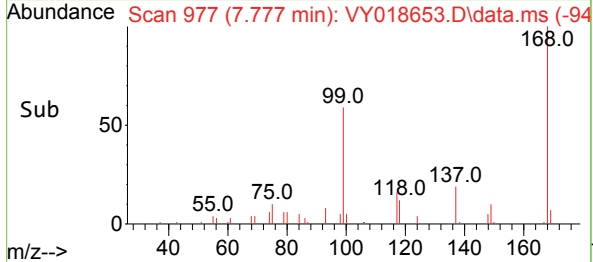
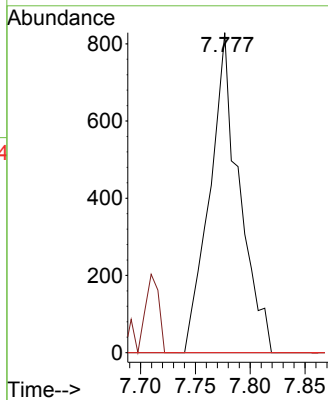


#36
 1,1-Dichloropropene
 Concen: 5.689 ug/l
 RT: 7.777 min Scan# 91
 Delta R.T. -0.128 min
 Lab File: VY018653.D
 Acq: 20 Jun 2024 13:50

Instrument :
 MSVOA_Y
 ClientSampleId :

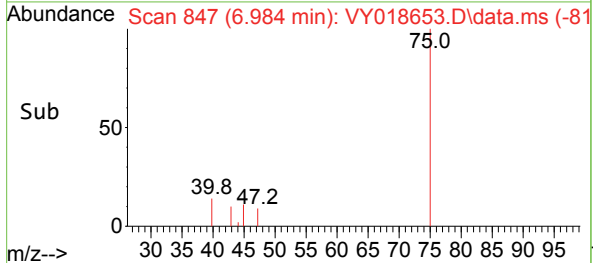
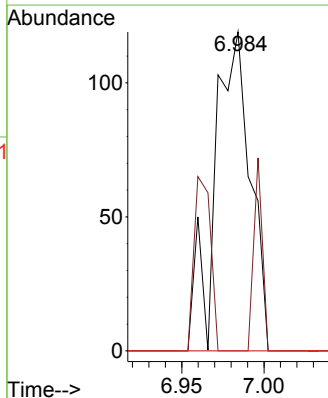
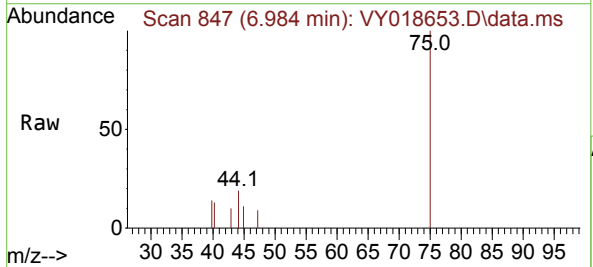


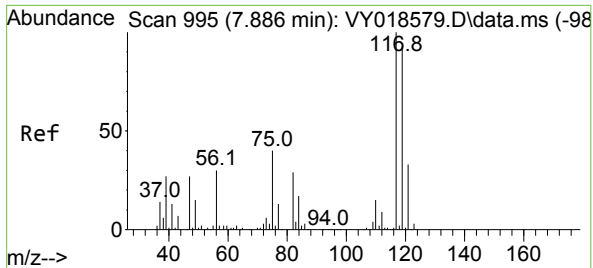
Tgt Ion	Resp	Lower	Upper
75	1557		
75	100		
110	0.0	19.0	57.0#
77	0.0	25.3	37.9#



#37
 Ethyl Acetate
 Concen: 1.387 ug/l
 RT: 6.984 min Scan# 847
 Delta R.T. -0.079 min
 Lab File: VY018653.D
 Acq: 20 Jun 2024 13:50

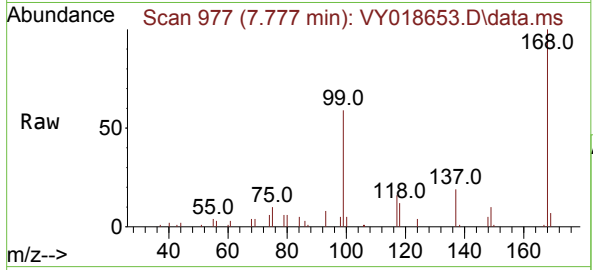
Tgt Ion	Resp	Lower	Upper
43	179		
43	100		
61	14.5	12.6	19.0
70	0.0	7.8	11.8#



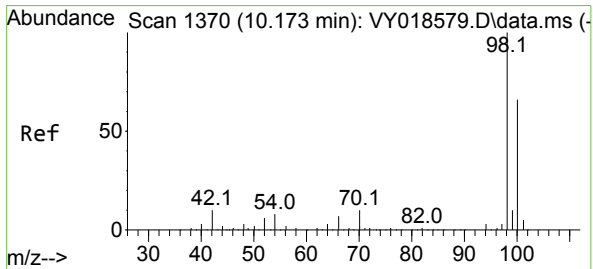
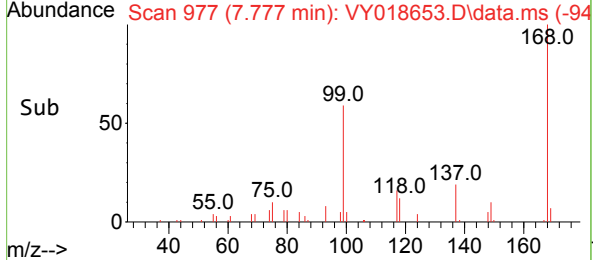
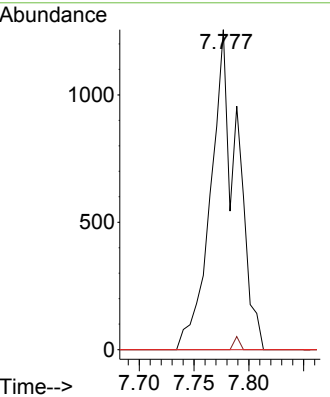


#38
 Carbon Tetrachloride
 Concen: 7.404 ug/l
 RT: 7.777 min Scan# 91
 Delta R.T. -0.110 min
 Lab File: VY018653.D
 Acq: 20 Jun 2024 13:50

Instrument : MSVOA_Y
 ClientSampleId :

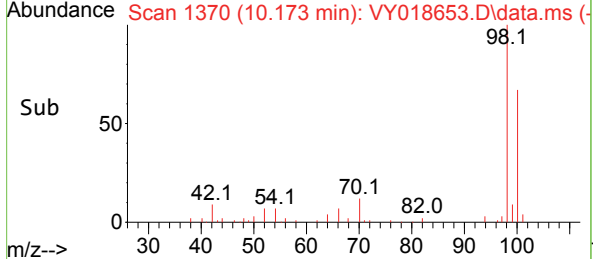
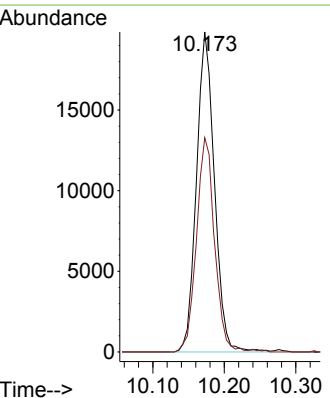
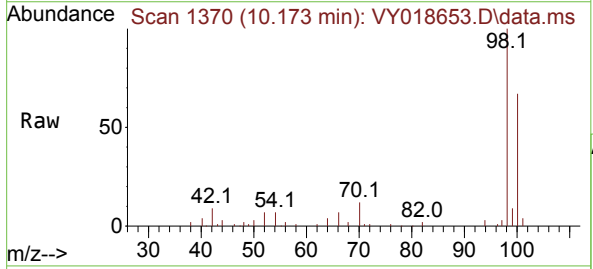


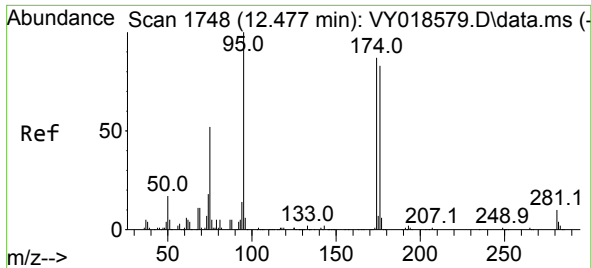
Tgt Ion:117 Resp: 2126
 Ion Ratio Lower Upper
 117 100
 119 0.0 75.8 113.6#
 121 0.0 24.0 36.0#



#50
 Toluene-d8
 Concen: 45.248 ug/l
 RT: 10.173 min Scan# 1370
 Delta R.T. 0.000 min
 Lab File: VY018653.D
 Acq: 20 Jun 2024 13:50

Tgt Ion: 98 Resp: 34600
 Ion Ratio Lower Upper
 98 100
 100 67.3 52.0 78.0

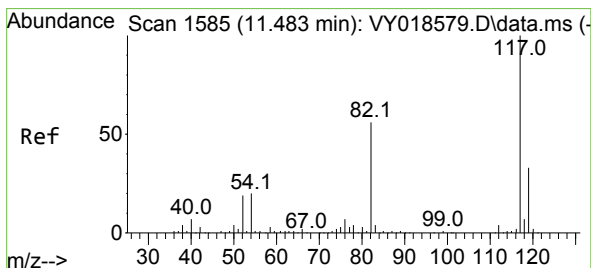
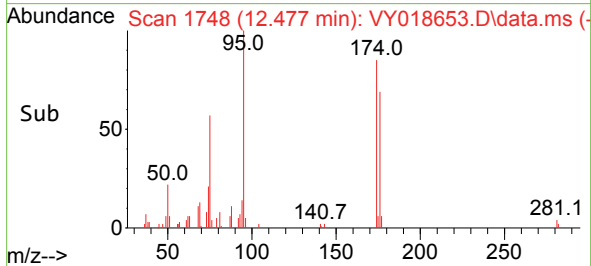
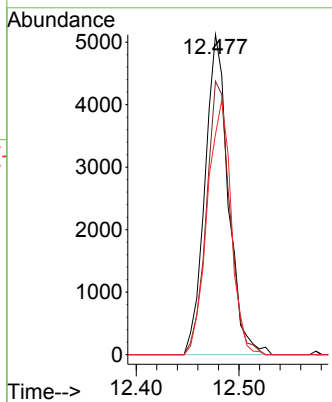
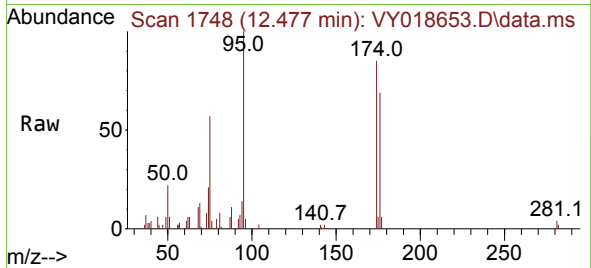




#62
 4-Bromofluorobenzene
 Concen: 33.604 ug/l
 RT: 12.477 min Scan# 1748
 Delta R.T. 0.000 min
 Lab File: VY018653.D
 Acq: 20 Jun 2024 13:50

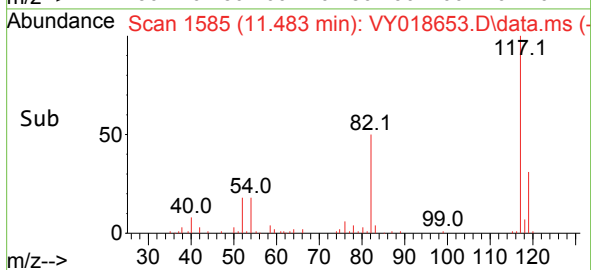
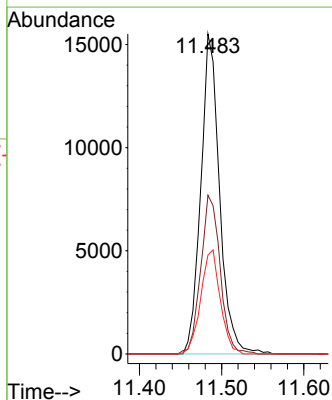
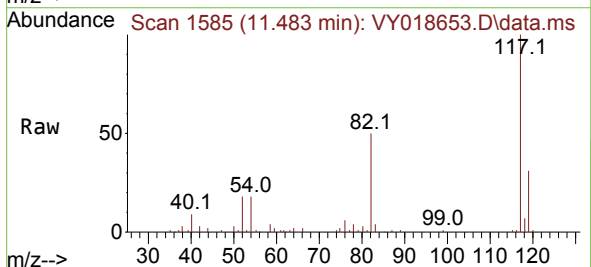
Instrument : MSVOA_Y
 ClientSampleId :

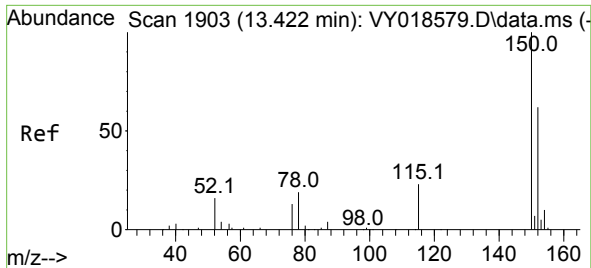
Tgt Ion	Resp	Lower	Upper
95	8114		
174	85.6	0.0	175.6
176	81.0	0.0	171.4



#63
 Chlorobenzene-d5
 Concen: 50.000 ug/l
 RT: 11.483 min Scan# 1585
 Delta R.T. 0.000 min
 Lab File: VY018653.D
 Acq: 20 Jun 2024 13:50

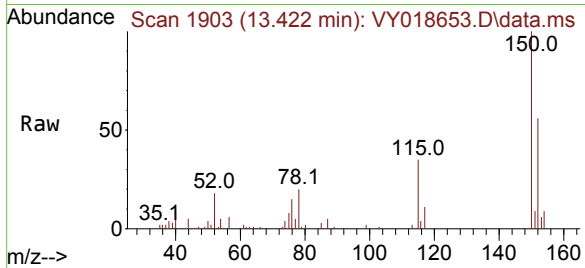
Tgt Ion	Resp	Lower	Upper
117	24599		
82	49.6	42.4	63.6
119	30.9	25.9	38.9



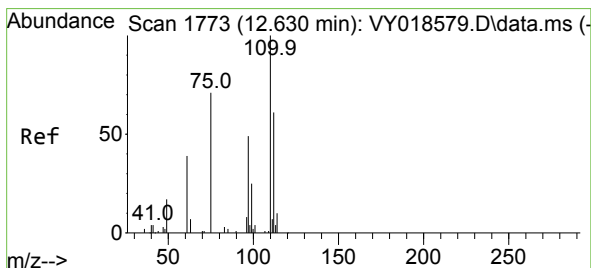
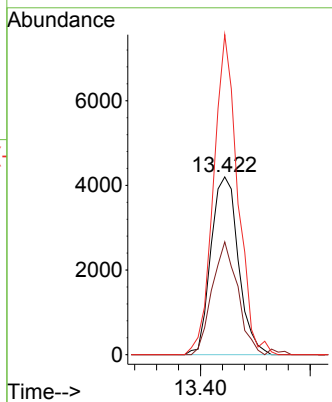
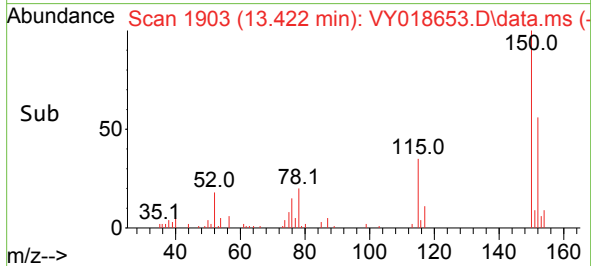


#72
 1,4-Dichlorobenzene-d4
 Concen: 50.000 ug/l
 RT: 13.422 min Scan# 1748
 Delta R.T. 0.000 min
 Lab File: VY018653.D
 Acq: 20 Jun 2024 13:50

Instrument : MSVOA_Y
 ClientSampleId :

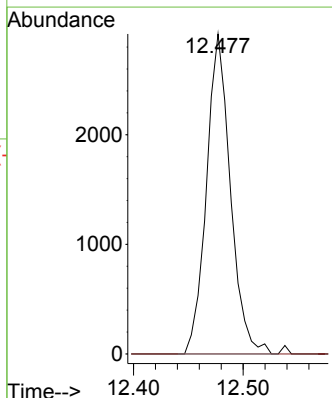
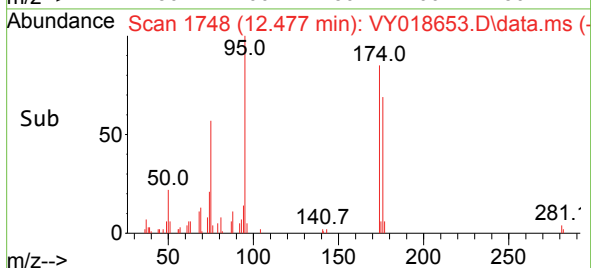
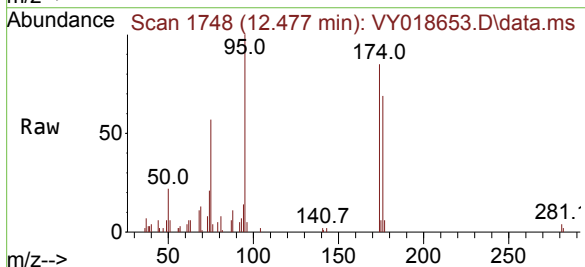


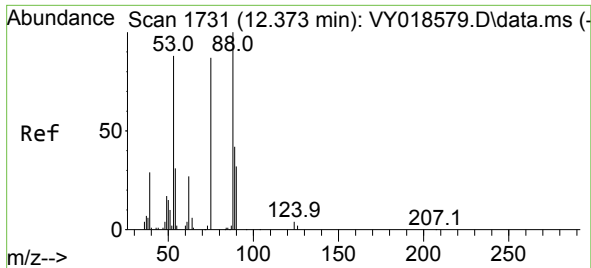
Tgt Ion:152 Resp: 7298
 Ion Ratio Lower Upper
 152 100
 115 59.2 28.2 84.7
 150 159.3 0.0 345.6



#76
 1,2,3-Trichloropropane
 Concen: 64.638 ug/l
 RT: 12.477 min Scan# 1748
 Delta R.T. -0.152 min
 Lab File: VY018653.D
 Acq: 20 Jun 2024 13:50

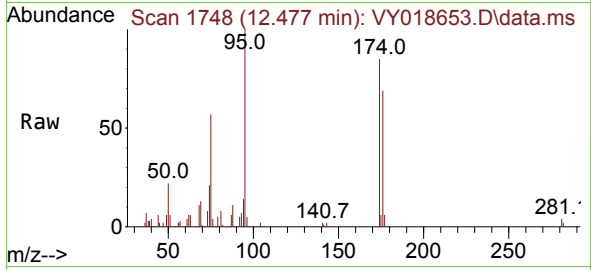
Tgt Ion: 75 Resp: 4425
 Ion Ratio Lower Upper
 75 100
 77 0.0 0.0 0.0



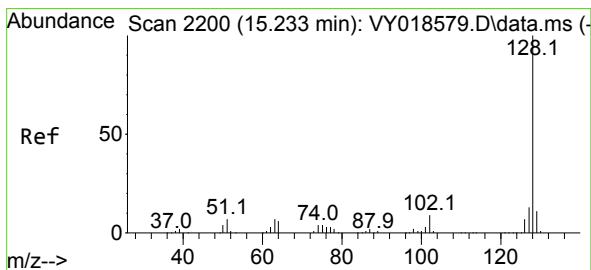
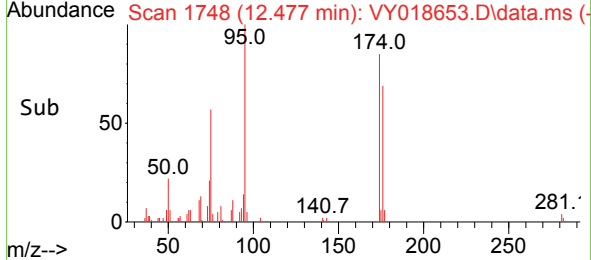
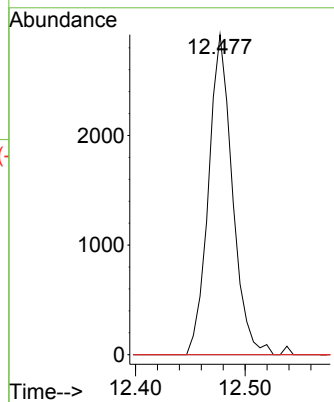


#81
 trans-1,4-Dichloro-2-butene
 Concen: 169.311 ug/l
 RT: 12.477 min Scan# 11
 Delta R.T. 0.104 min
 Lab File: VY018653.D
 Acq: 20 Jun 2024 13:50

Instrument :
 MSVOA_Y
 ClientSampleId :



Tgt Ion: 75 Resp: 4425
 Ion Ratio Lower Upper
 75 100
 53 0.0 66.8 100.2#
 89 0.0 35.8 53.6#



#95
 Naphthalene
 Concen: 1.013 ug/l
 RT: 15.245 min Scan# 2202
 Delta R.T. 0.012 min
 Lab File: VY018653.D
 Acq: 20 Jun 2024 13:50

Tgt Ion:128 Resp: 224
 Ion Ratio Lower Upper
 128 100
 127 0.0 10.6 16.0#
 129 0.0 8.6 13.0#

