

Data Path : Z:\voasrv\HPCHEM1\MSVOA_Y\Data\VY062025\
 Data File : VY022766.D
 Acq On : 20 Jun 2025 16:18
 Operator : SY/MD
 Sample : Q2380-01
 Misc : 5.30g/5.0mL/MSVOA_Y/SOIL/A
 ALS Vial : 9 Sample Multiplier: 1

Instrument :
 MSVOA_Y
 ClientSampleId :
 72-11948

Integration Parameters: RTEINT.P

Integrator: RTE
 Smoothing : ON Filtering: 5
 Sampling : 1 Min Area: 3 % of largest Peak
 Start Thrs: 0.2 Max Peaks: 100
 Stop Thrs : 0 Peak Location: TOP

If leading or trailing edge < 100 prefer < Baseline drop else tangent >
 Peak separation: 5

Method : Z:\voasrv\HPCHEM1\MSVOA_Y\methods\82Y060225S.M
 Title : SW846 8260

Signal : TIC: VY022766.D\data.ms

peak #	R.T. min	first scan	max scan	last scan	PK TY	peak height	corr. area	corr. % max.	% of total
1	2.489	119	126	130	rBV6	5463	13266	2.11%	0.429%
2	4.616	467	475	485	rBV6	4112	11736	1.87%	0.380%
3	5.647	635	644	651	rBV7	2718	8262	1.32%	0.267%
4	7.634	960	970	976	rBV2	86662	207243	33.03%	6.705%
5	7.707	976	982	995	rVB	133081	313749	50.01%	10.151%
6	8.061	1031	1040	1055	rBV	80591	180035	28.70%	5.825%
7	8.616	1122	1131	1146	rBV	231395	462515	73.72%	14.964%
8	10.109	1368	1376	1384	rBV	362168	627375	100.00%	20.298%
9	11.414	1584	1590	1602	rBV	317629	525974	83.84%	17.017%
10	12.408	1746	1753	1763	rBV	219254	341045	54.36%	11.034%
11	13.346	1898	1907	1918	rBV	254196	399646	63.70%	12.930%

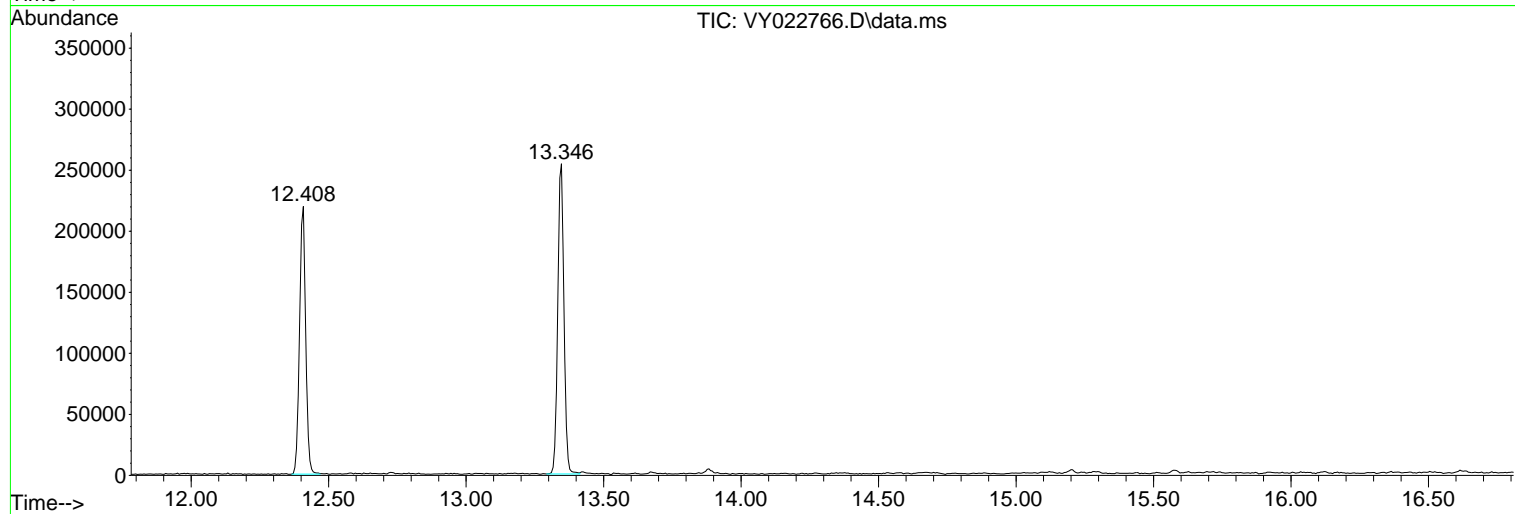
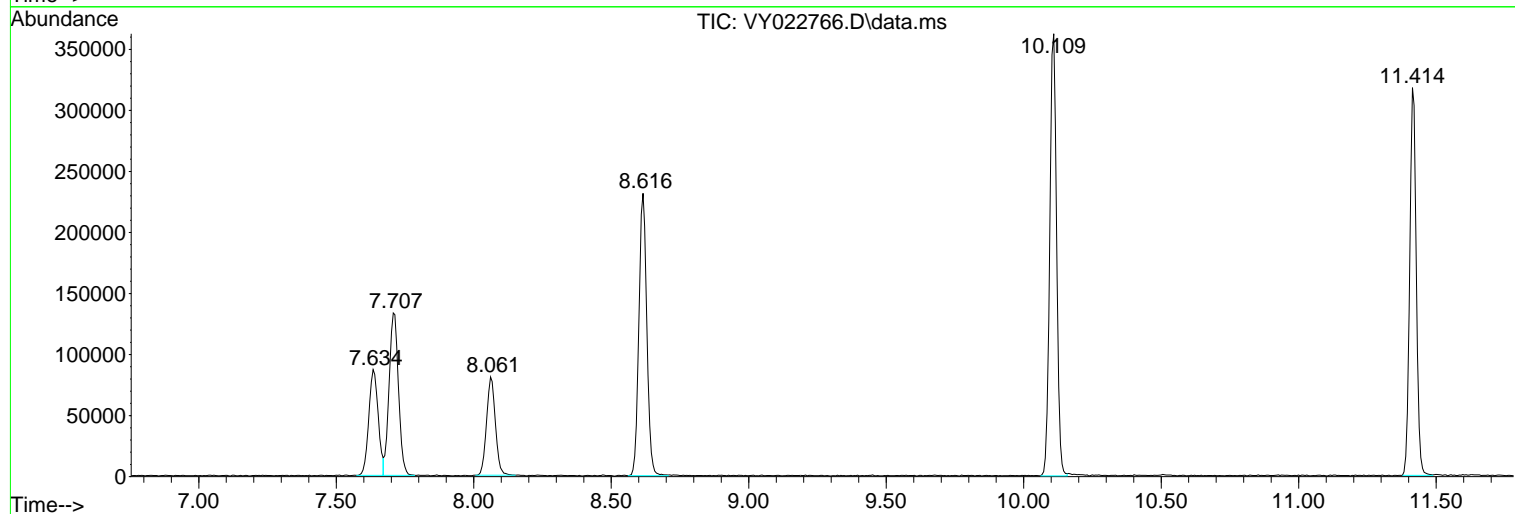
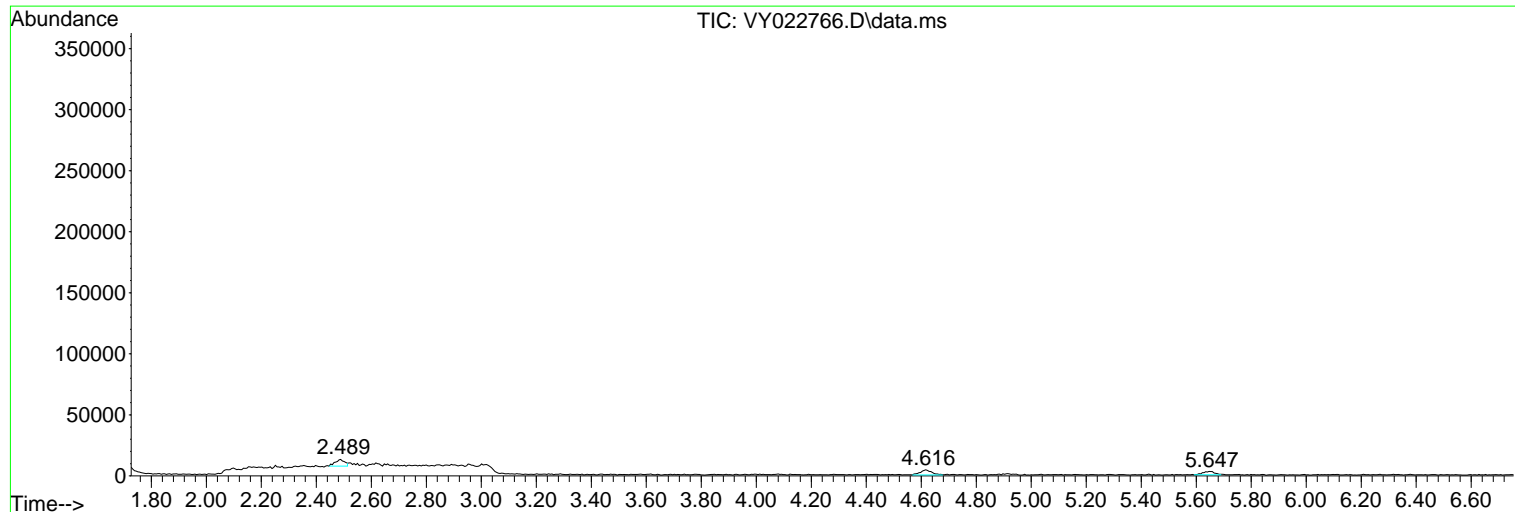
Sum of corrected areas: 3090846

Data Path : Z:\voasrv\HPCHEM1\MSVOA_Y\Data\VY062025\
 Data File : VY022766.D
 Acq On : 20 Jun 2025 16:18
 Operator : SY/MD
 Sample : Q2380-01
 Misc : 5.30g/5.0mL/MSVOA_Y/SOIL/A
 ALS Vial : 9 Sample Multiplier: 1

Instrument :
 MSVOA_Y
 ClientSampleId :
 72-11948

Quant Method : Z:\voasrv\HPCHEM1\MSVOA_Y\methods\82Y060225S.M
 Quant Title : SW846 8260

TIC Library : C:\Database\NIST20.L
 TIC Integration Parameters: LSCINT.P



Library Search Compound Report

Data Path : Z:\voasrv\HPCHEM1\MSVOA_Y\Data\VY062025\
Data File : VY022766.D
Acq On : 20 Jun 2025 16:18
Operator : SY/MD
Sample : Q2380-01
Misc : 5.30g/5.0mL/MSVOA_Y/SOIL/A
ALS Vial : 9 Sample Multiplier: 1

Instrument :
MSVOA_Y
ClientSampleId :
72-11948

Quant Method : Z:\voasrv\HPCHEM1\MSVOA_Y\methods\82Y060225S.M
Quant Title : SW846 8260

TIC Library : C:\Database\NIST20.L
TIC Integration Parameters: LSCINT.P

No Library Search Compounds Detected

Data Path : Z:\voasrv\HPCHEM1\MSVOA_Y\Data\VY062025\
Data File : VY022766.D
Acq On : 20 Jun 2025 16:18
Operator : SY/MD
Sample : Q2380-01
Misc : 5.30g/5.0mL/MSVOA_Y/SOIL/A
ALS Vial : 9 Sample Multiplier: 1

Instrument :
MSVOA_Y
ClientSampleId :
72-11948

Quant Method : Z:\voasrv\HPCHEM1\MSVOA_Y\methods\82Y060225S.M
Quant Title : SW846 8260

TIC Library : C:\Database\NIST0.L
TIC Integration Parameters: LSCINT.P

TIC Top Hit name	RT	EstConc	Units	Response	#	RT	Resp	Conc
------------------	----	---------	-------	----------	---	----	------	------
