

Data Path : Z:\voasrv\HPCHEM1\MSVOA\_Y\Data\VY062124\  
 Data File : VY018662.D  
 Acq On : 21 Jun 2024 11:18  
 Operator : SY/MD  
 Sample : VY0621SBL01  
 Misc : 5.00g/5.0mL/MSVOA\_Y/SOIL  
 ALS Vial : 4 Sample Multiplier: 1

**Instrument :**  
 MSVOA\_Y  
**ClientSampleId :**  
 VY0621SBL01

Quant Time: Jun 21 22:57:03 2024  
 Quant Method : Z:\voasrv\HPCHEM1\MSVOA\_Y\methods\82Y061324S.M  
 Quant Title : SW846 8260  
 QLast Update : Fri Jun 14 07:08:24 2024  
 Response via : Initial Calibration

Compound	R.T.	QIon	Response	Conc	Units	Dev(Min)
Internal Standards						
1) Pentafluorobenzene	7.777	168	110314	50.000	ug/l	0.00
34) 1,4-Difluorobenzene	8.679	114	203035	50.000	ug/l	0.00
63) Chlorobenzene-d5	11.483	117	187279	50.000	ug/l	0.00
72) 1,4-Dichlorobenzene-d4	13.422	152	67220	50.000	ug/l	0.00
System Monitoring Compounds						
33) 1,2-Dichloroethane-d4	8.130	65	56379	50.763	ug/l	0.00
Spiked Amount	50.000	Range	50 - 163	Recovery	=	101.520%
35) Dibromofluoromethane	7.704	113	64590	52.150	ug/l	0.00
Spiked Amount	50.000	Range	54 - 147	Recovery	=	104.300%
50) Toluene-d8	10.173	98	242824	50.981	ug/l	0.00
Spiked Amount	50.000	Range	58 - 134	Recovery	=	101.960%
62) 4-Bromofluorobenzene	12.477	95	66813	44.423	ug/l	0.00
Spiked Amount	50.000	Range	30 - 143	Recovery	=	88.840%

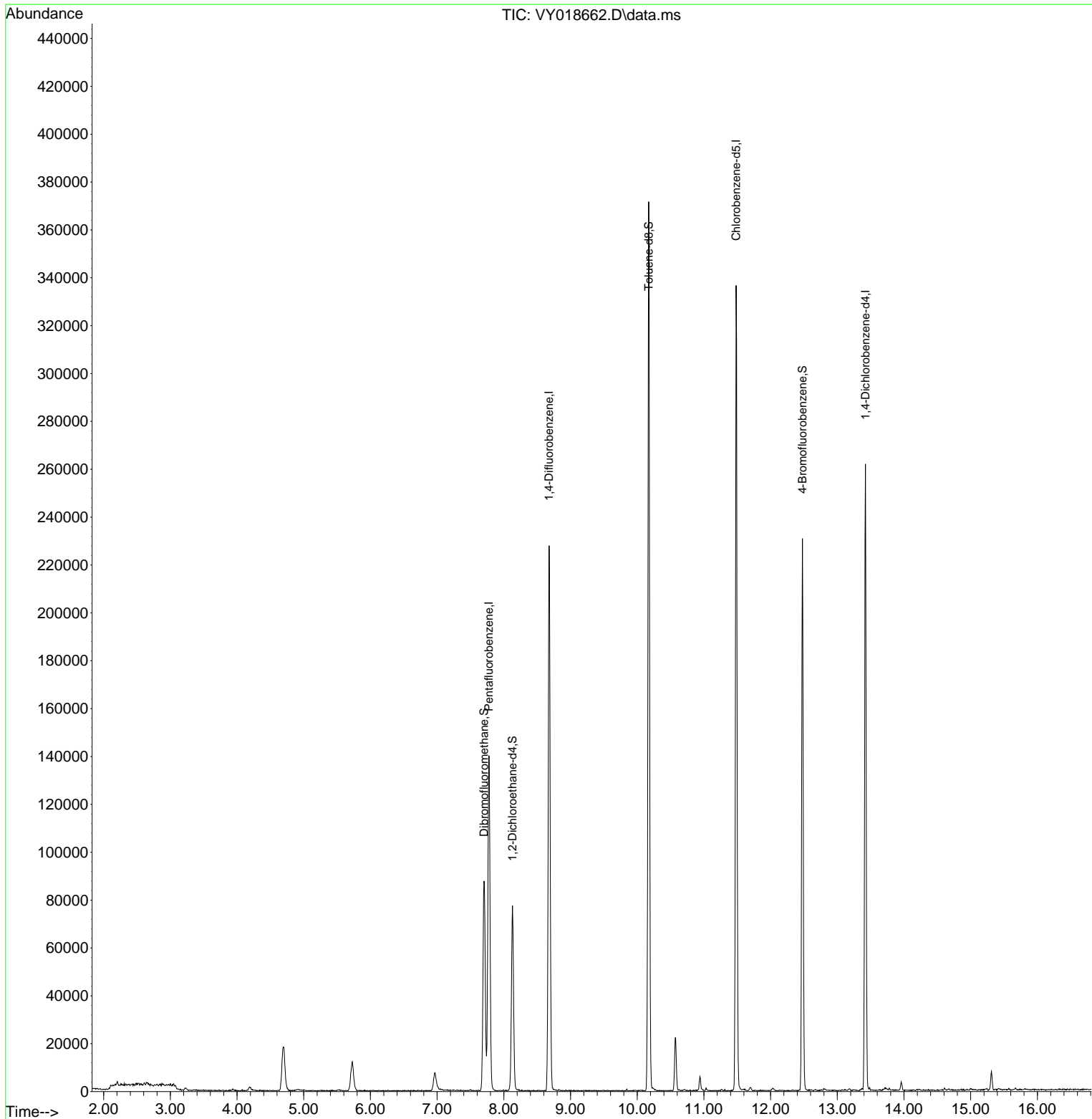
Target Compounds Qvalue

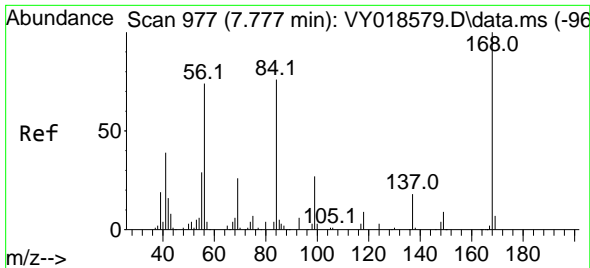
(#) = qualifier out of range (m) = manual integration (+) = signals summed

Data Path : Z:\voasrv\HPCHEM1\MSVOA\_Y\Data\VY062124\  
 Data File : VY018662.D  
 Acq On : 21 Jun 2024 11:18  
 Operator : SY/MD  
 Sample : VY0621SBL01  
 Misc : 5.00g/5.0mL/MSVOA\_Y/SOIL  
 ALS Vial : 4 Sample Multiplier: 1

Instrument :  
 MSVOA\_Y  
 ClientSampleId :  
 VY0621SBL01

Quant Time: Jun 21 22:57:03 2024  
 Quant Method : Z:\voasrv\HPCHEM1\MSVOA\_Y\methods\82Y061324S.M  
 Quant Title : SW846 8260  
 QLast Update : Fri Jun 14 07:08:24 2024  
 Response via : Initial Calibration

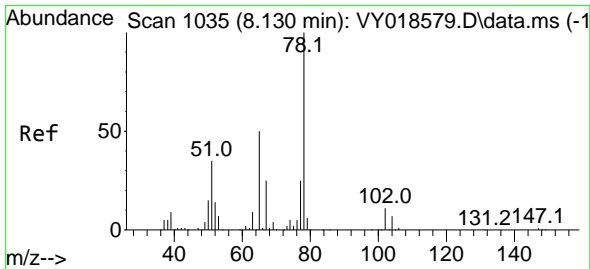
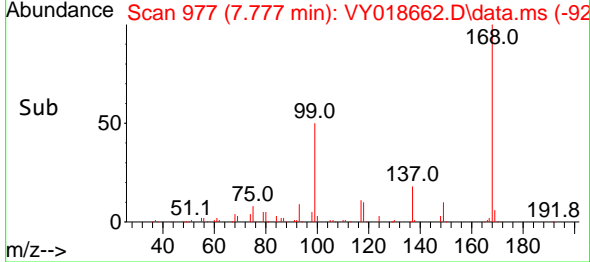
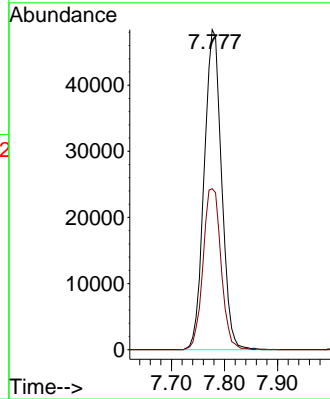
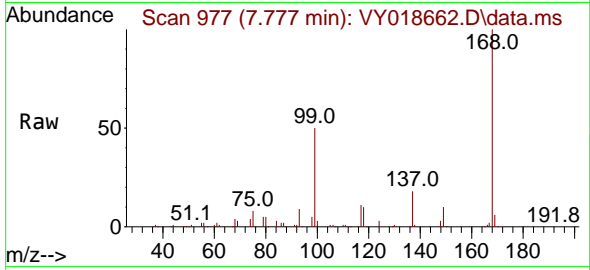




#1  
 Pentafluorobenzene  
 Concen: 50.000 ug/l  
 RT: 7.777 min Scan# 91  
 Delta R.T. -0.000 min  
 Lab File: VY018662.D  
 Acq: 21 Jun 2024 11:18

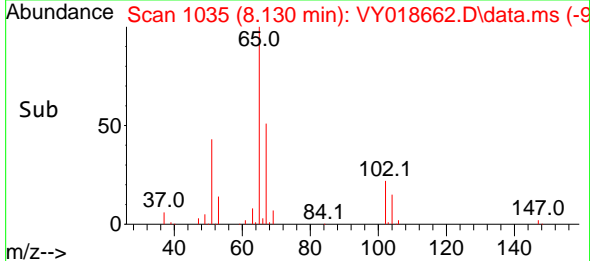
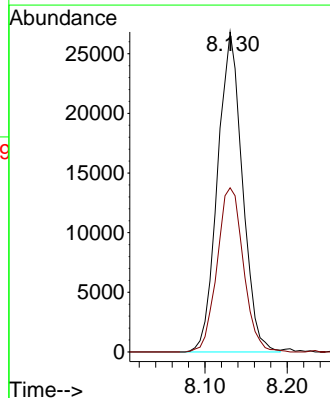
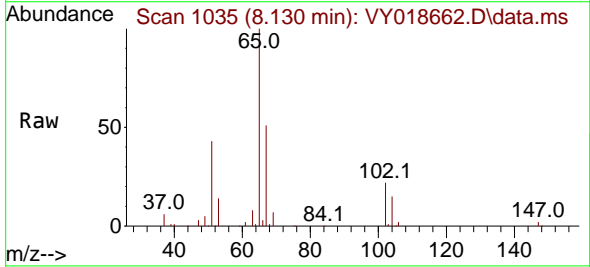
Instrument : MSVOA\_Y  
 ClientSampleId : VY0621SBL01

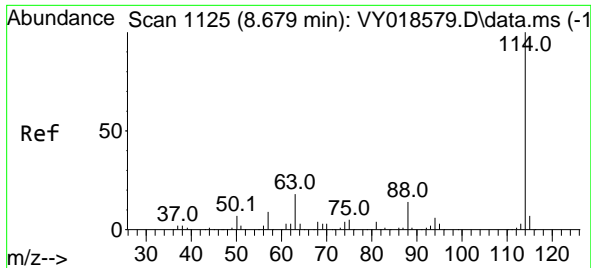
Tgt Ion:168 Resp: 110314  
 Ion Ratio Lower Upper  
 168 100  
 99 50.3 39.1 58.7



#33  
 1,2-Dichloroethane-d4  
 Concen: 50.763 ug/l  
 RT: 8.130 min Scan# 1035  
 Delta R.T. 0.000 min  
 Lab File: VY018662.D  
 Acq: 21 Jun 2024 11:18

Tgt Ion: 65 Resp: 56379  
 Ion Ratio Lower Upper  
 65 100  
 67 54.3 0.0 109.6

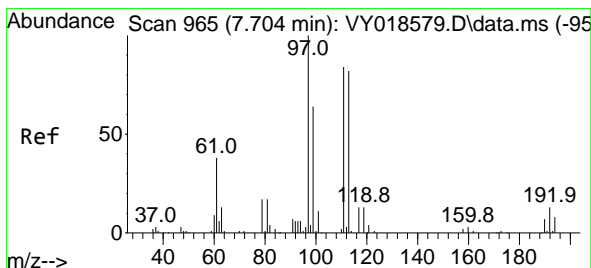
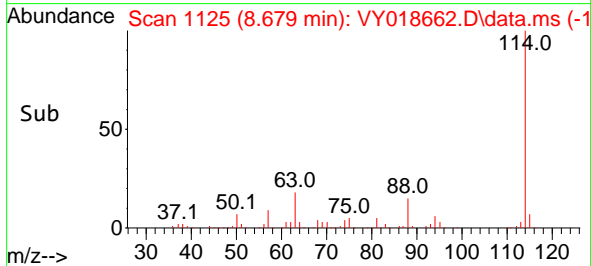
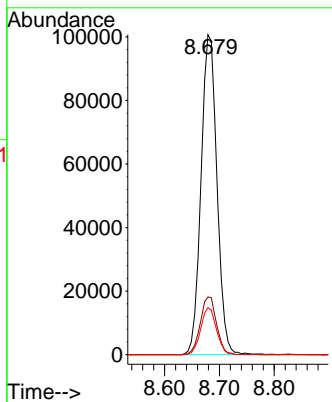
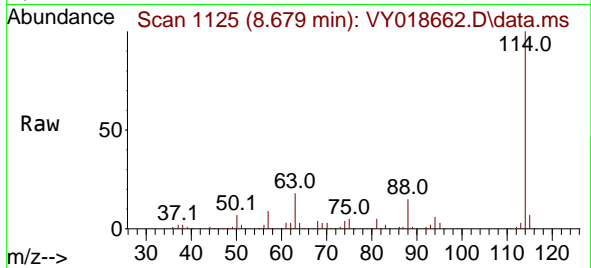




#34  
 1,4-Difluorobenzene  
 Concen: 50.000 ug/l  
 RT: 8.679 min Scan# 1125  
 Delta R.T. 0.000 min  
 Lab File: VY018662.D  
 Acq: 21 Jun 2024 11:18

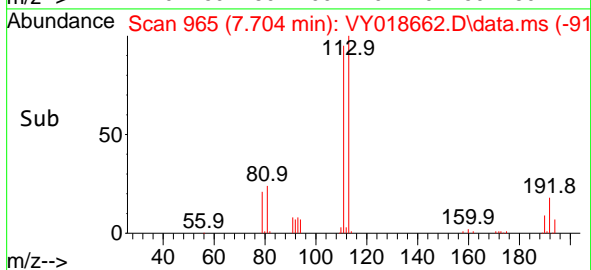
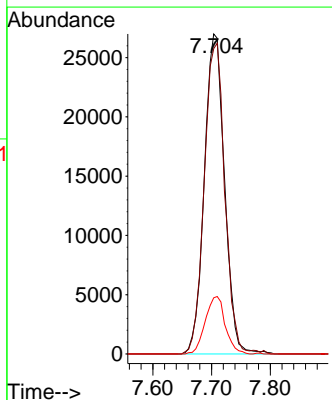
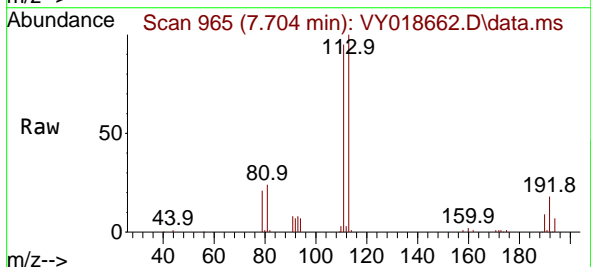
Instrument : MSVOA\_Y  
 ClientSampleId : VY0621SBL01

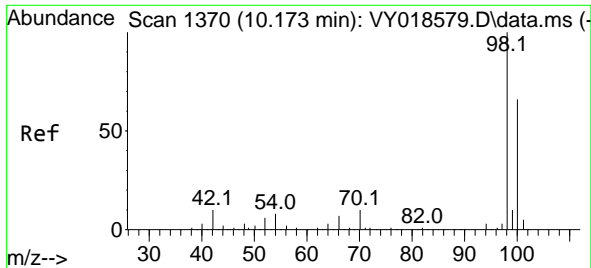
Tgt Ion	Resp	Lower	Upper
114	100		
63	18.0	0.0	35.0
88	14.7	0.0	27.2



#35  
 Dibromofluoromethane  
 Concen: 52.150 ug/l  
 RT: 7.704 min Scan# 965  
 Delta R.T. 0.000 min  
 Lab File: VY018662.D  
 Acq: 21 Jun 2024 11:18

Tgt Ion	Resp	Lower	Upper
113	100		
111	98.9	82.2	123.4
192	17.7	15.9	23.9

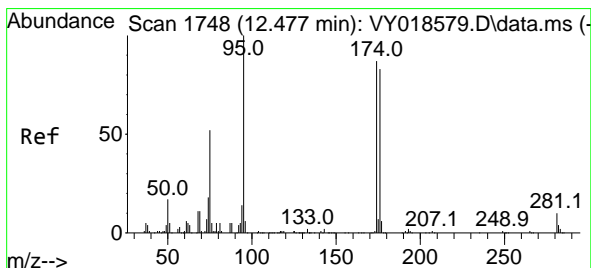
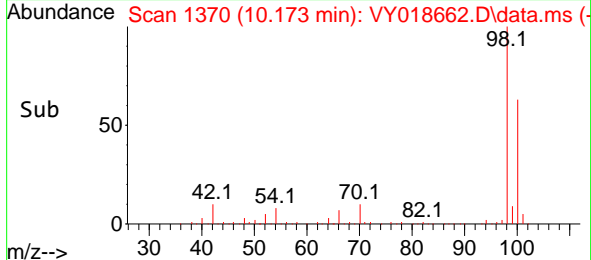
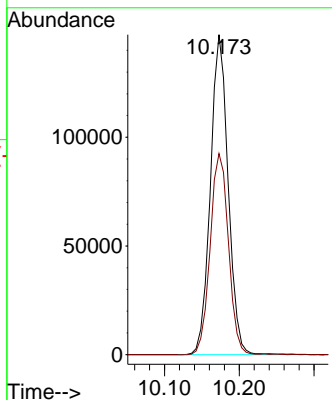
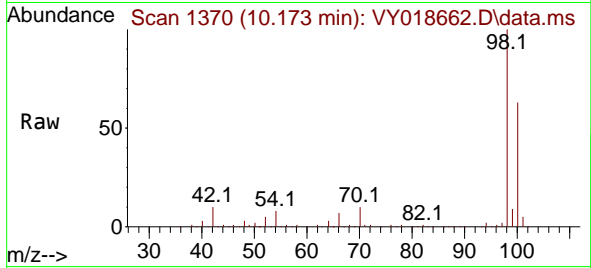




#50  
 Toluene-d8  
 Concen: 50.981 ug/l  
 RT: 10.173 min Scan# 11  
 Delta R.T. 0.000 min  
 Lab File: VY018662.D  
 Acq: 21 Jun 2024 11:18

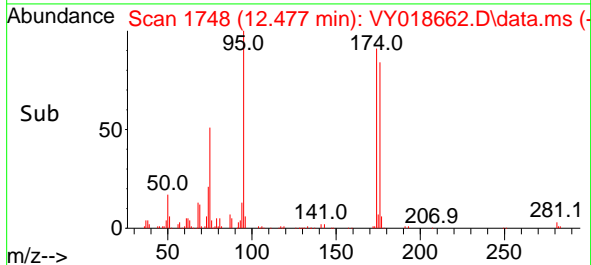
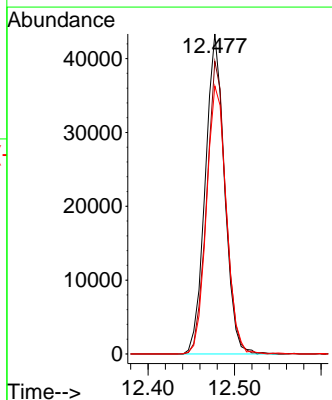
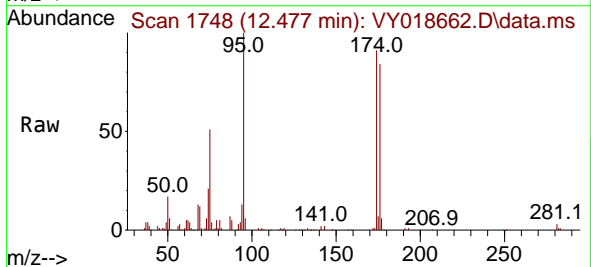
Instrument :  
 MSVOA\_Y  
 ClientSampleId :  
 VY0621SBL01

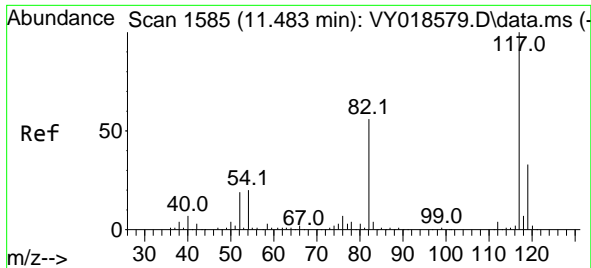
Tgt Ion: 98 Resp: 242824  
 Ion Ratio Lower Upper  
 98 100  
 100 64.7 52.0 78.0



#62  
 4-Bromofluorobenzene  
 Concen: 44.423 ug/l  
 RT: 12.477 min Scan# 1748  
 Delta R.T. 0.000 min  
 Lab File: VY018662.D  
 Acq: 21 Jun 2024 11:18

Tgt Ion: 95 Resp: 66813  
 Ion Ratio Lower Upper  
 95 100  
 174 90.8 0.0 175.6  
 176 86.6 0.0 171.4



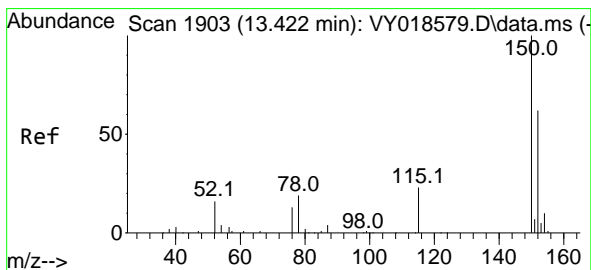
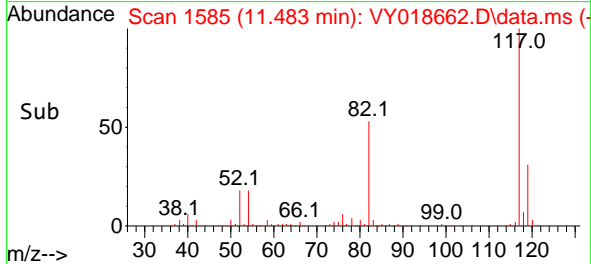
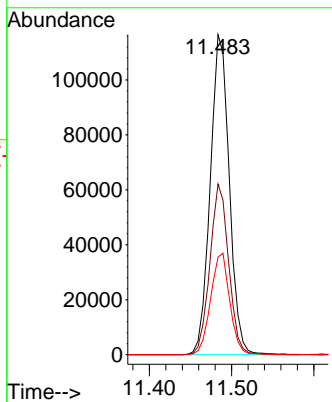
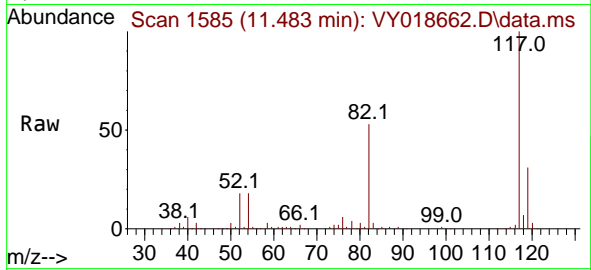


#63  
 Chlorobenzene-d5  
 Concen: 50.000 ug/l  
 RT: 11.483 min Scan# 111  
 Delta R.T. 0.000 min  
 Lab File: VY018662.D  
 Acq: 21 Jun 2024 11:18

Instrument :  
 MSVOA\_Y  
 ClientSampleId :  
 VY0621SBL01

Tgt Ion:117 Resp: 187279

Ion	Ratio	Lower	Upper
117	100		
82	53.4	42.4	63.6
119	30.5	25.9	38.9



#72  
 1,4-Dichlorobenzene-d4  
 Concen: 50.000 ug/l  
 RT: 13.422 min Scan# 1903  
 Delta R.T. 0.000 min  
 Lab File: VY018662.D  
 Acq: 21 Jun 2024 11:18

Tgt Ion:152 Resp: 67220

Ion	Ratio	Lower	Upper
152	100		
115	57.0	28.2	84.7
150	158.7	0.0	345.6

