

Data Path : Z:\voasrv\HPCHEM1\MSVOA_Y\Data\VY062524\
 Data File : VY018693.D
 Acq On : 25 Jun 2024 17:11
 Operator : SY/MD
 Sample : P3045-01
 Misc : 5.06g/5.0mL/MSVOA_Y/SOIL/A
 ALS Vial : 15 Sample Multiplier: 1

Instrument :
 MSVOA_Y
 ClientSampleId :
 6AB

Quant Time: Jun 26 02:39:17 2024
 Quant Method : Z:\voasrv\HPCHEM1\MSVOA_Y\methods\82Y061324S.M
 Quant Title : SW846 8260
 QLast Update : Fri Jun 14 07:08:24 2024
 Response via : Initial Calibration

Compound	R.T.	QIon	Response	Conc	Units	Dev(Min)

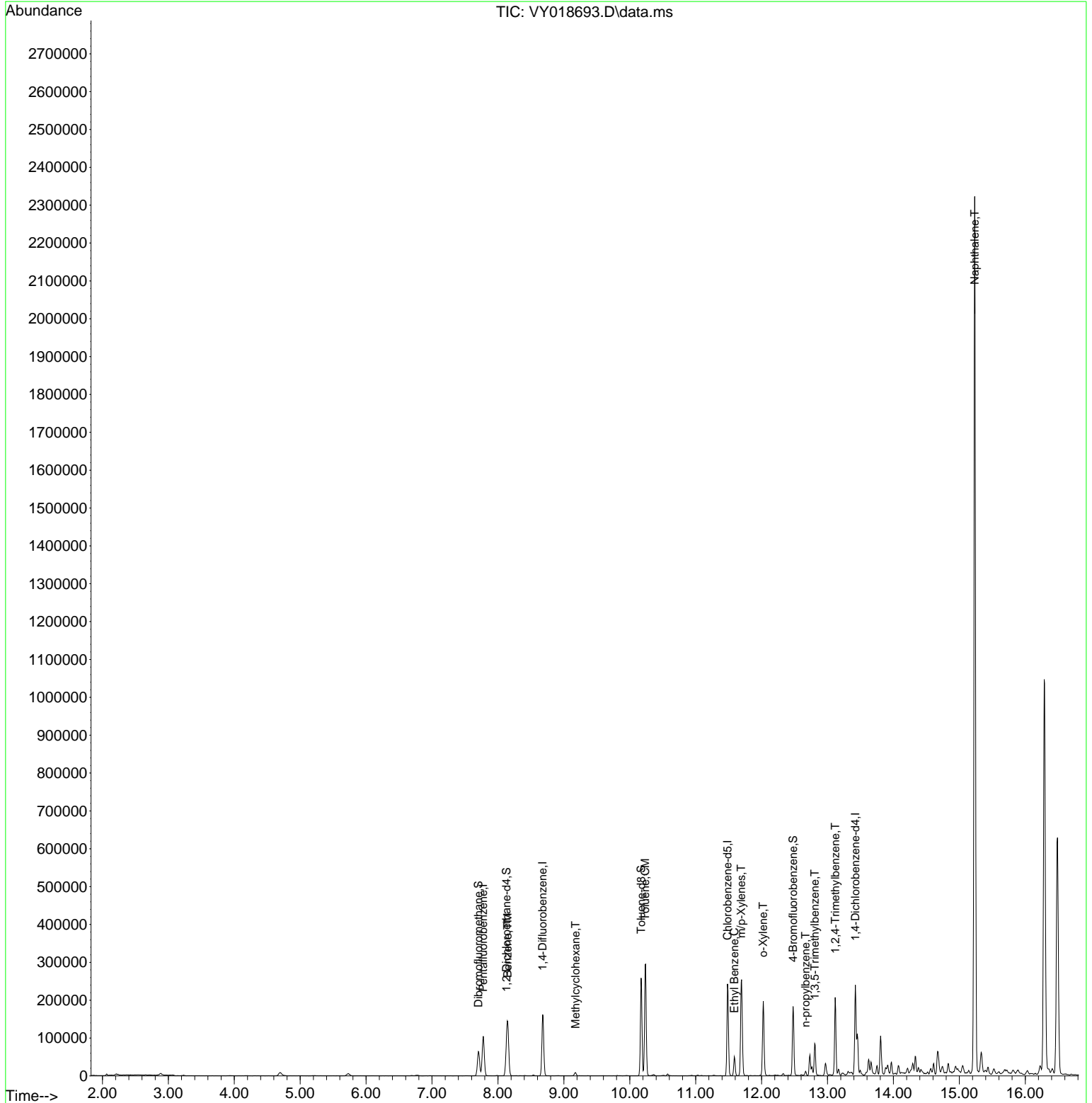
Internal Standards						
1) Pentafluorobenzene	7.777	168	77790	50.000	ug/l	0.00
34) 1,4-Difluorobenzene	8.679	114	145451	50.000	ug/l	0.00
63) Chlorobenzene-d5	11.483	117	135048	50.000	ug/l	0.00
72) 1,4-Dichlorobenzene-d4	13.422	152	60046	50.000	ug/l	0.00
System Monitoring Compounds						
33) 1,2-Dichloroethane-d4	8.130	65	41916	53.520	ug/l	0.00
Spiked Amount	50.000	Range	50 - 163	Recovery	=	107.040%
35) Dibromofluoromethane	7.704	113	45076	50.803	ug/l	0.00
Spiked Amount	50.000	Range	54 - 147	Recovery	=	101.600%
50) Toluene-d8	10.173	98	167442	49.072	ug/l	0.00
Spiked Amount	50.000	Range	58 - 134	Recovery	=	98.140%
62) 4-Bromofluorobenzene	12.477	95	53477	49.632	ug/l	0.00
Spiked Amount	50.000	Range	30 - 143	Recovery	=	99.260%
Target Compounds						
					Qvalue	
39) Methylcyclohexane	9.179	83	3542	2.367	ug/l #	88
40) Benzene	8.149	78	123627	32.731	ug/l	98
52) Toluene	10.234	92	128402	52.949	ug/l	99
67) Ethyl Benzene	11.587	91	33799	6.982	ug/l	96
68) m/p-Xylenes	11.691	106	81239	43.130	ug/l	100
69) o-Xylene	12.026	106	51723	28.555	ug/l	97
78) n-propylbenzene	12.666	91	9076	1.769	ug/l	100
80) 1,3,5-Trimethylbenzene	12.806	105	40851	11.755	ug/l	97
84) 1,2,4-Trimethylbenzene	13.117	105	107146	30.848	ug/l	99
95) Naphthalene	15.233	128	1862210	1023.737	ug/l	99

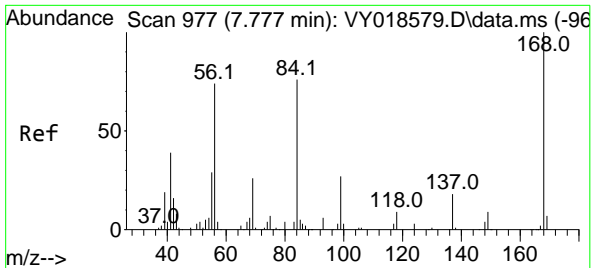
(#) = qualifier out of range (m) = manual integration (+) = signals summed

Data Path : Z:\voasrv\HPCHEM1\MSVOA_Y\Data\VY062524\
 Data File : VY018693.D
 Acq On : 25 Jun 2024 17:11
 Operator : SY/MD
 Sample : P3045-01
 Misc : 5.06g/5.0mL/MSVOA_Y/SOIL/A
 ALS Vial : 15 Sample Multiplier: 1

Instrument :
 MSVOA_Y
 ClientSampleId :
 6AB

Quant Time: Jun 26 02:39:17 2024
 Quant Method : Z:\voasrv\HPCHEM1\MSVOA_Y\methods\82Y061324S.M
 Quant Title : SW846 8260
 QLast Update : Fri Jun 14 07:08:24 2024
 Response via : Initial Calibration

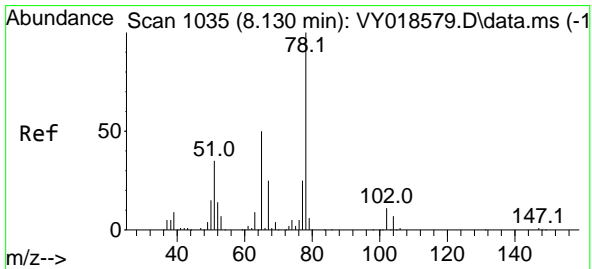
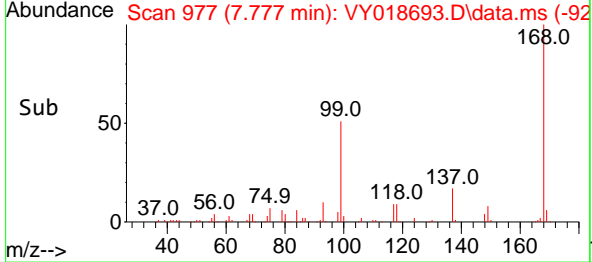
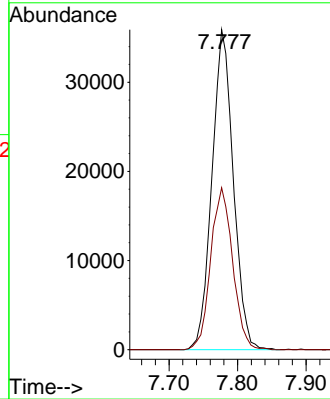
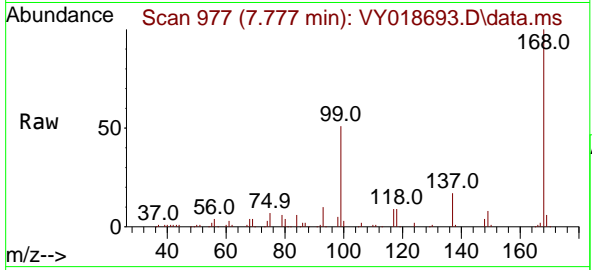




#1
 Pentafluorobenzene
 Concen: 50.000 ug/l
 RT: 7.777 min Scan# 91
 Delta R.T. -0.000 min
 Lab File: VY018693.D
 Acq: 25 Jun 2024 17:11

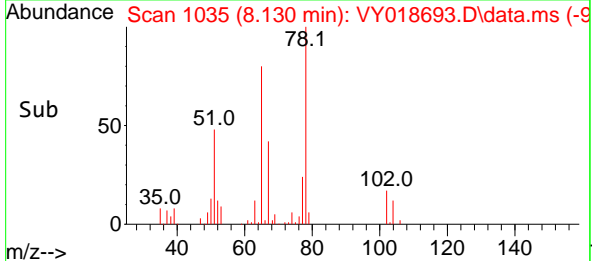
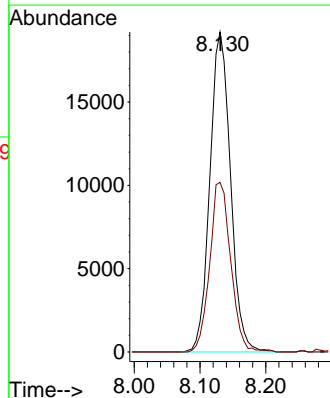
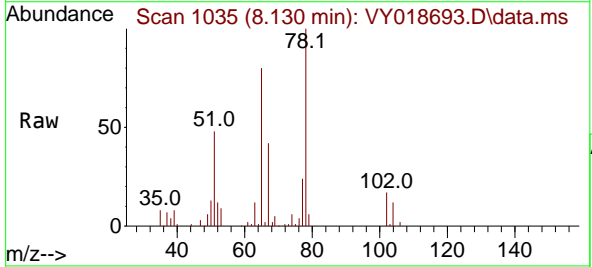
Instrument :
 MSVOA_Y
 ClientSampleId :
 6AB

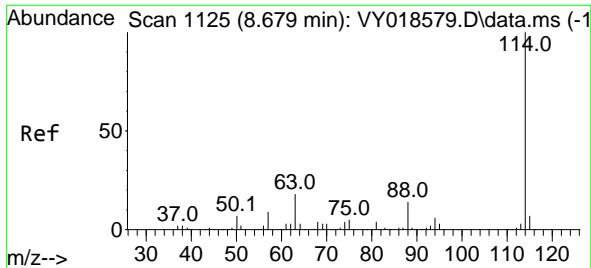
Tgt Ion:168 Resp: 77790
 Ion Ratio Lower Upper
 168 100
 99 50.6 39.1 58.7



#33
 1,2-Dichloroethane-d4
 Concen: 53.520 ug/l
 RT: 8.130 min Scan# 1035
 Delta R.T. 0.000 min
 Lab File: VY018693.D
 Acq: 25 Jun 2024 17:11

Tgt Ion: 65 Resp: 41916
 Ion Ratio Lower Upper
 65 100
 67 54.0 0.0 109.6

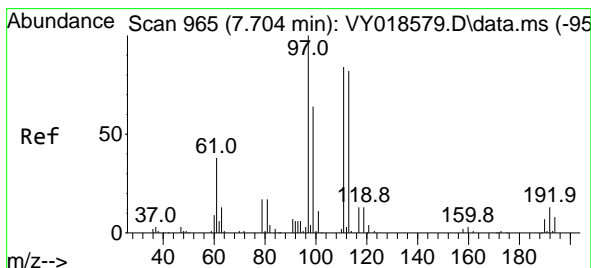
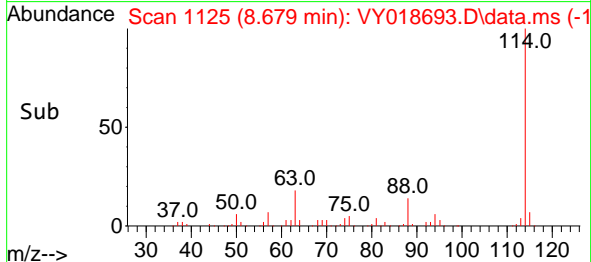
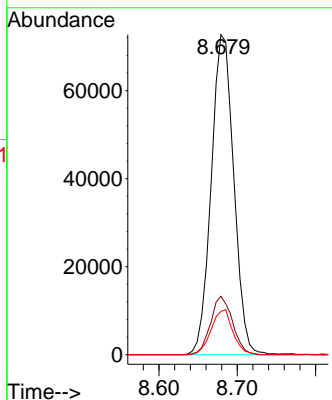
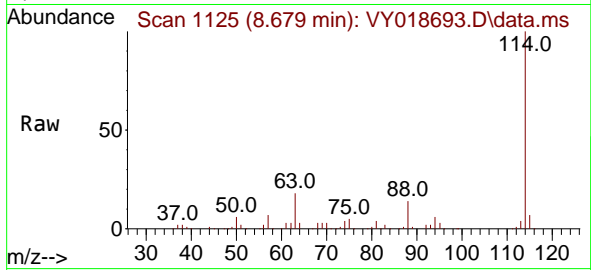




#34
 1,4-Difluorobenzene
 Concen: 50.000 ug/l
 RT: 8.679 min Scan# 1125
 Delta R.T. 0.000 min
 Lab File: VY018693.D
 Acq: 25 Jun 2024 17:11

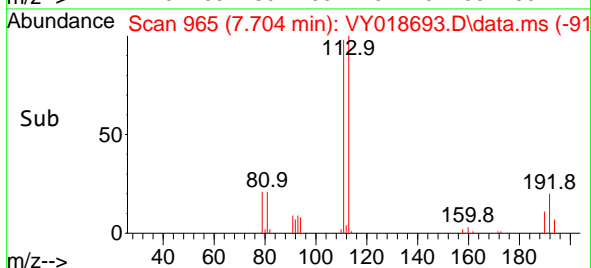
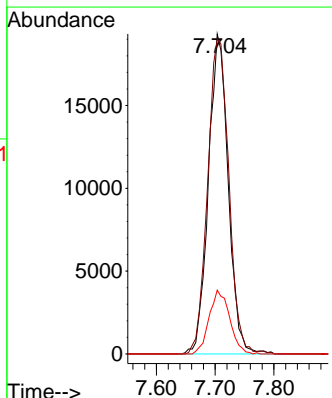
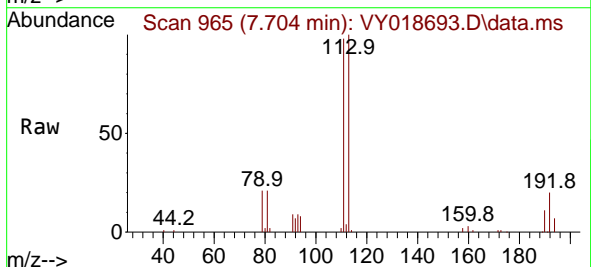
Instrument : MSVOA_Y
 ClientSampleId : 6AB

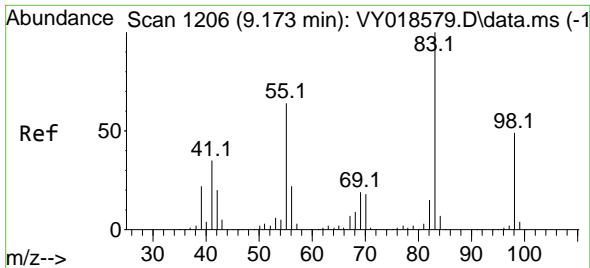
Tgt Ion	Resp	Lower	Upper
114	145451		
63	18.2	0.0	35.0
88	13.5	0.0	27.2



#35
 Dibromofluoromethane
 Concen: 50.803 ug/l
 RT: 7.704 min Scan# 965
 Delta R.T. 0.000 min
 Lab File: VY018693.D
 Acq: 25 Jun 2024 17:11

Tgt Ion	Resp	Lower	Upper
113	45076		
111	105.7	82.2	123.4
192	20.7	15.9	23.9

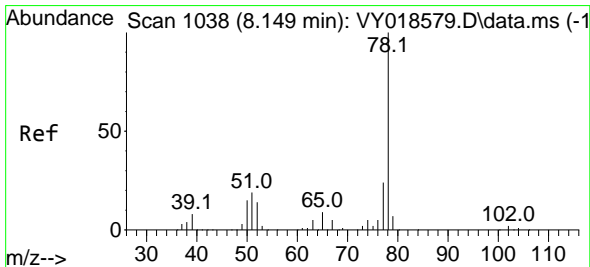
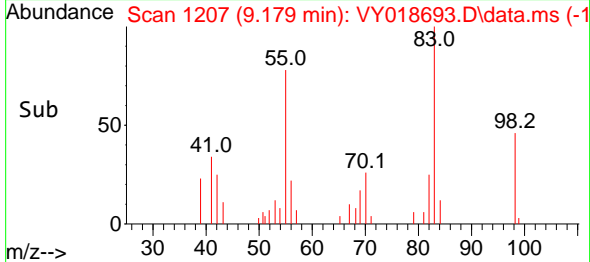
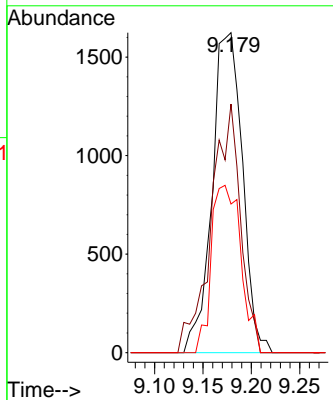
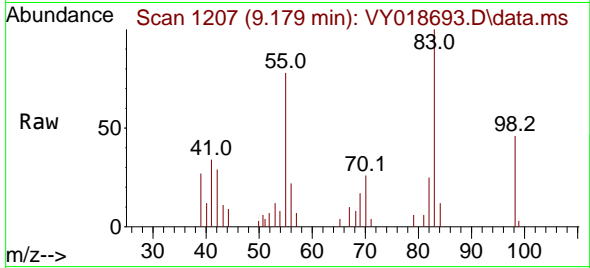




#39
 Methylcyclohexane
 Concen: 2.367 ug/l
 RT: 9.179 min Scan# 11
 Delta R.T. 0.006 min
 Lab File: VY018693.D
 Acq: 25 Jun 2024 17:11

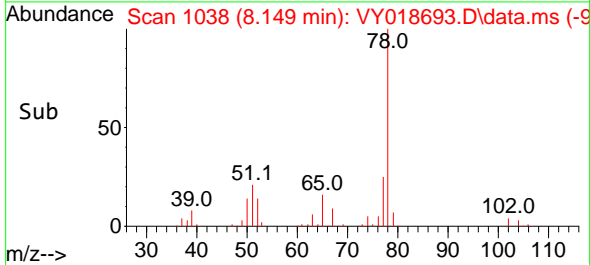
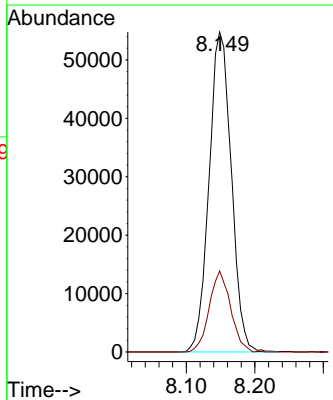
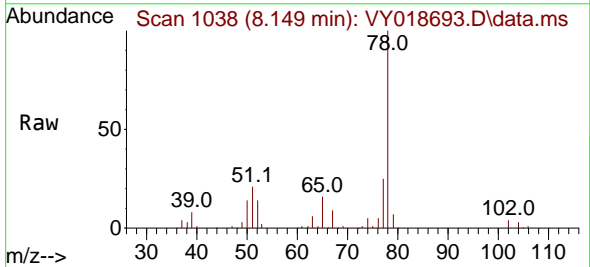
Instrument :
 MSVOA_Y
 ClientSampleId :
 6AB

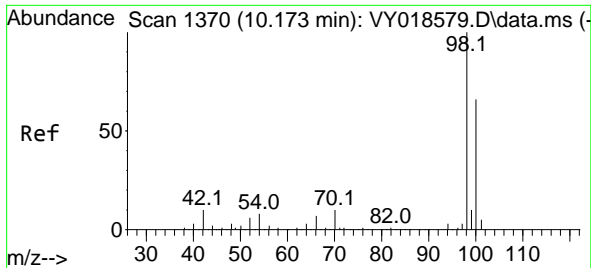
Tgt Ion	Resp	Lower	Upper
83	3542		
55	77.7	51.5	77.3#
98	46.4	40.5	60.7



#40
 Benzene
 Concen: 32.731 ug/l
 RT: 8.149 min Scan# 1038
 Delta R.T. 0.000 min
 Lab File: VY018693.D
 Acq: 25 Jun 2024 17:11

Tgt Ion	Resp	Lower	Upper
78	123627		
77	25.4	19.5	29.3

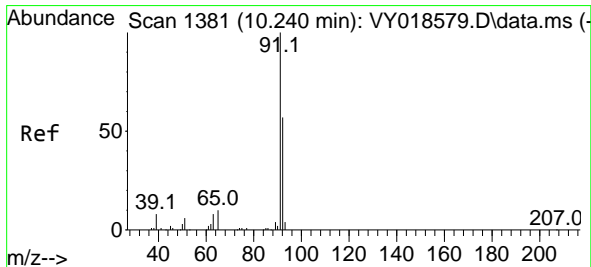
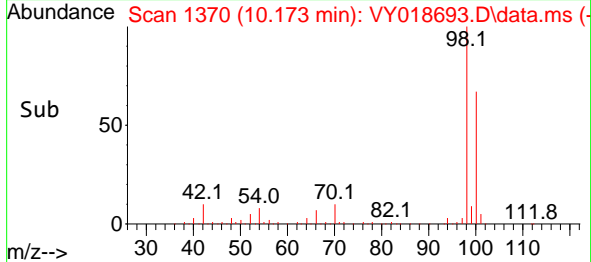
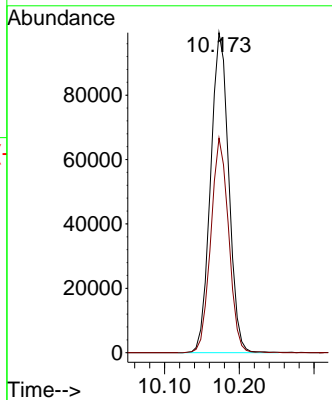
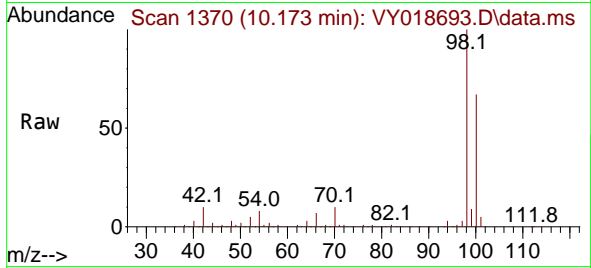




#50
 Toluene-d8
 Concen: 49.072 ug/l
 RT: 10.173 min Scan# 111
 Delta R.T. 0.000 min
 Lab File: VY018693.D
 Acq: 25 Jun 2024 17:11

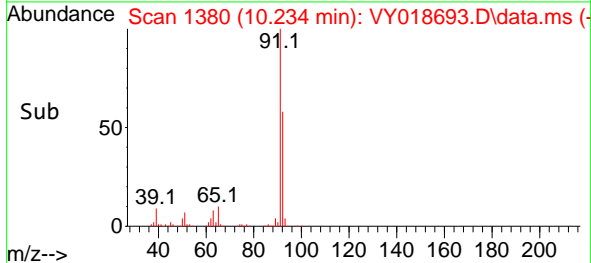
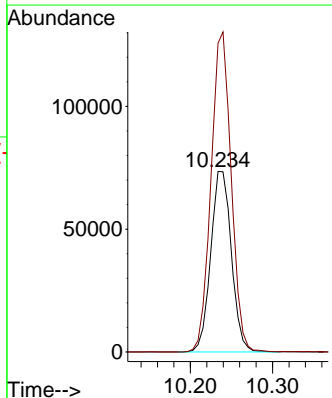
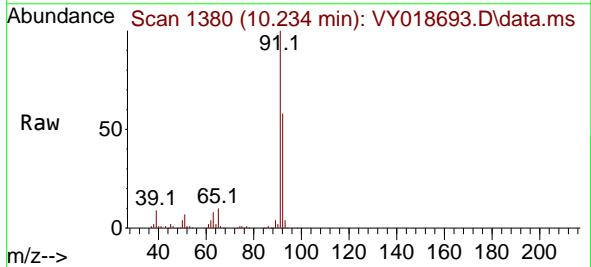
Instrument :
 MSVOA_Y
 ClientSampleId :
 6AB

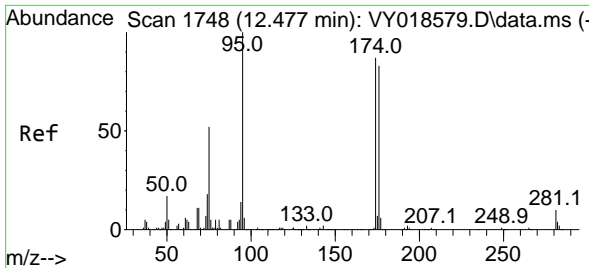
Tgt Ion: 98 Resp: 167442
 Ion Ratio Lower Upper
 98 100
 100 65.8 52.0 78.0



#52
 Toluene
 Concen: 52.949 ug/l
 RT: 10.234 min Scan# 1380
 Delta R.T. -0.006 min
 Lab File: VY018693.D
 Acq: 25 Jun 2024 17:11

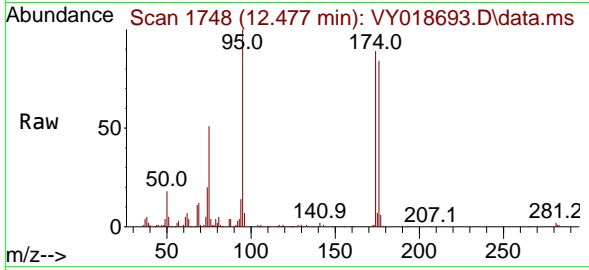
Tgt Ion: 92 Resp: 128402
 Ion Ratio Lower Upper
 92 100
 91 172.8 139.0 208.6



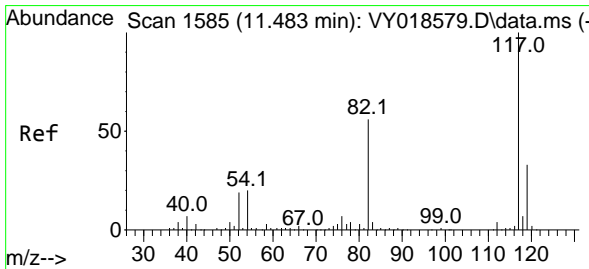
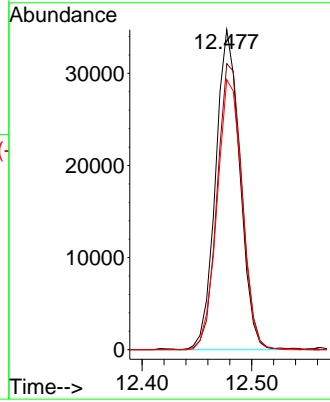
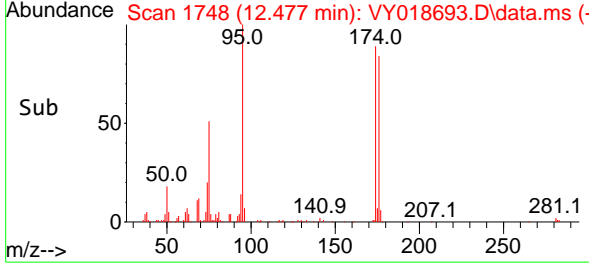


#62
 4-Bromofluorobenzene
 Concen: 49.632 ug/l
 RT: 12.477 min Scan# 1
 Delta R.T. 0.000 min
 Lab File: VY018693.D
 Acq: 25 Jun 2024 17:11

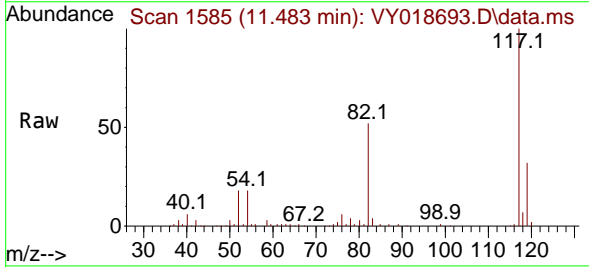
Instrument :
 MSVOA_Y
 ClientSampleId :
 6AB



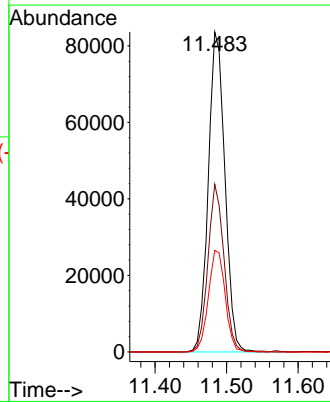
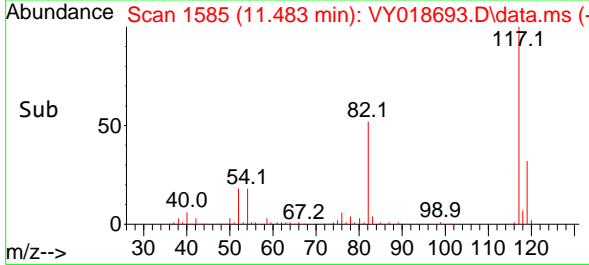
Tgt Ion: 95 Resp: 53477
 Ion Ratio Lower Upper
 95 100
 174 92.3 0.0 175.6
 176 87.7 0.0 171.4

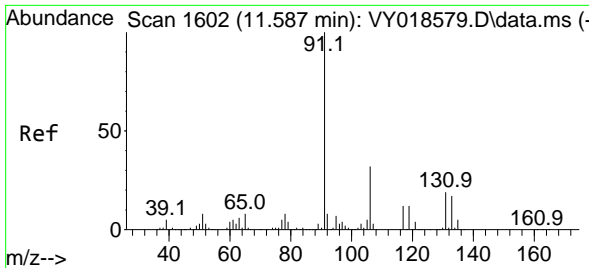


#63
 Chlorobenzene-d5
 Concen: 50.000 ug/l
 RT: 11.483 min Scan# 1585
 Delta R.T. 0.000 min
 Lab File: VY018693.D
 Acq: 25 Jun 2024 17:11



Tgt Ion: 117 Resp: 135048
 Ion Ratio Lower Upper
 117 100
 82 52.4 42.4 63.6
 119 31.8 25.9 38.9

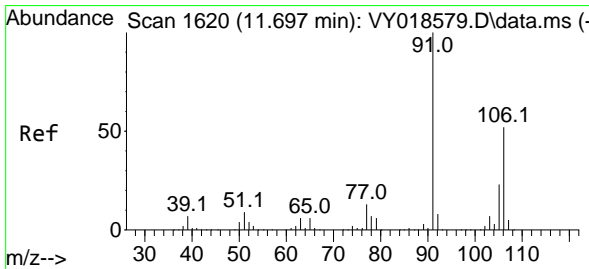
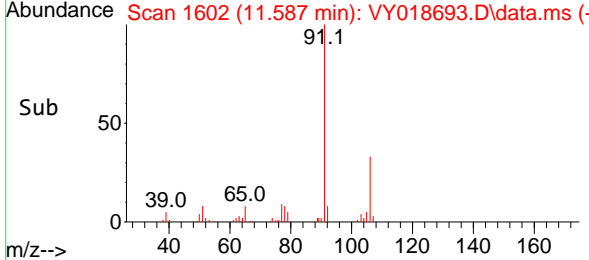
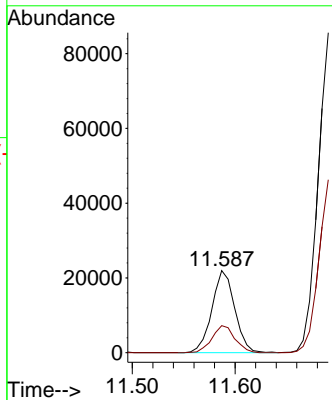
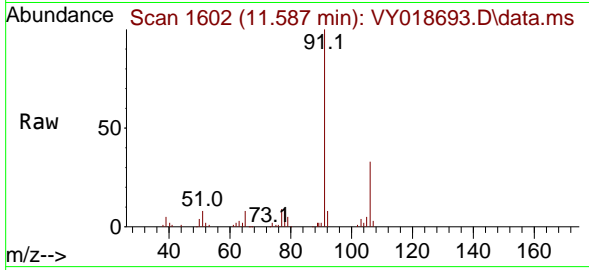




#67
 Ethyl Benzene
 Concen: 6.982 ug/l
 RT: 11.587 min Scan# 1602
 Delta R.T. 0.000 min
 Lab File: VY018693.D
 Acq: 25 Jun 2024 17:11

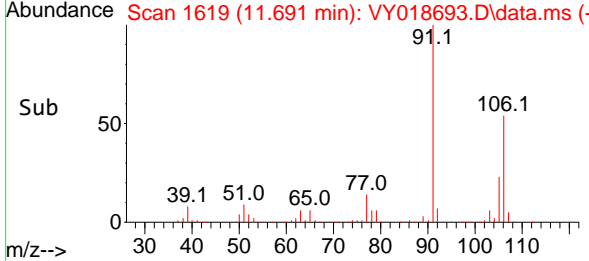
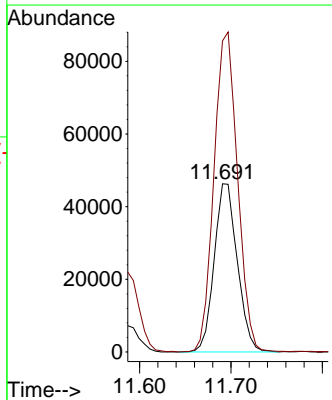
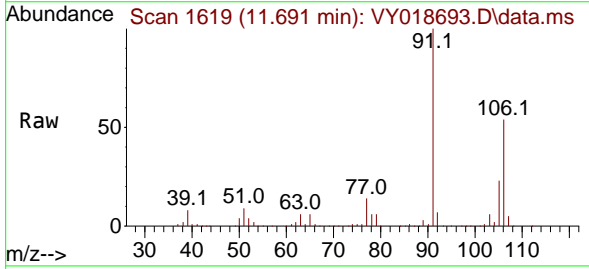
Instrument : MSVOA_Y
 ClientSampleId : 6AB

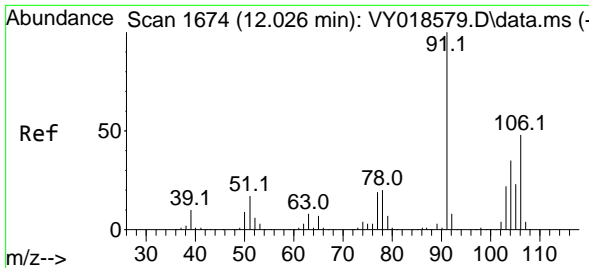
Tgt Ion: 91 Resp: 33799
 Ion Ratio Lower Upper
 91 100
 106 33.0 24.5 36.7



#68
 m/p-Xylenes
 Concen: 43.130 ug/l
 RT: 11.691 min Scan# 1619
 Delta R.T. -0.006 min
 Lab File: VY018693.D
 Acq: 25 Jun 2024 17:11

Tgt Ion:106 Resp: 81239
 Ion Ratio Lower Upper
 106 100
 91 194.6 156.0 234.0

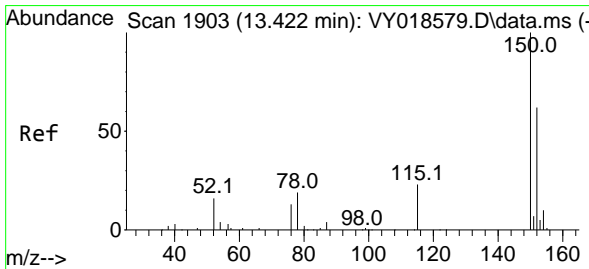
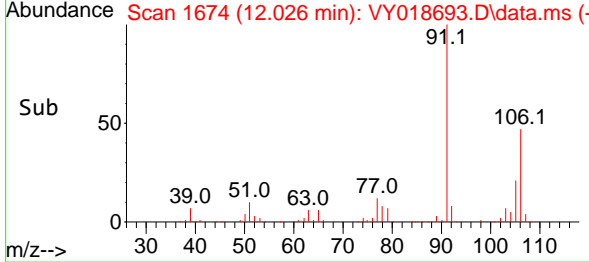
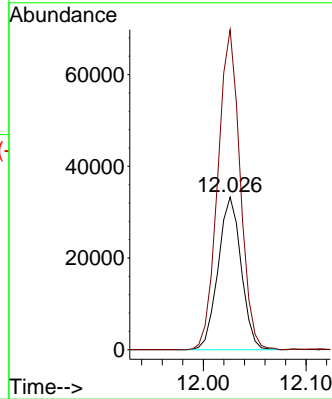
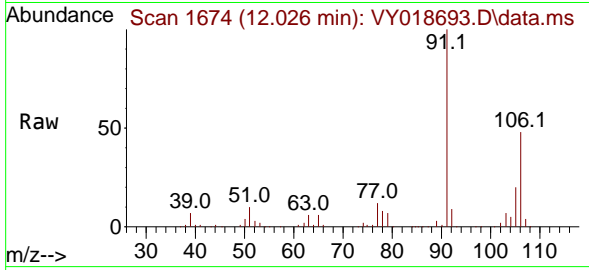




#69
 o-Xylene
 Concen: 28.555 ug/l
 RT: 12.026 min Scan# 10
 Delta R.T. 0.000 min
 Lab File: VY018693.D
 Acq: 25 Jun 2024 17:11

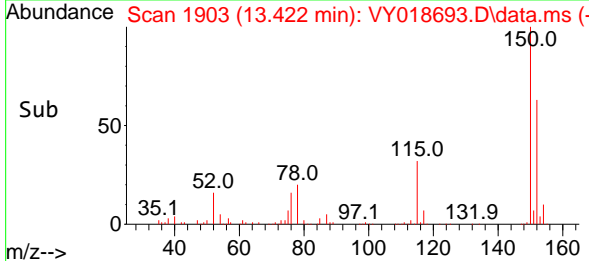
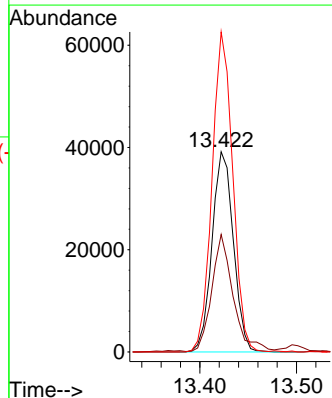
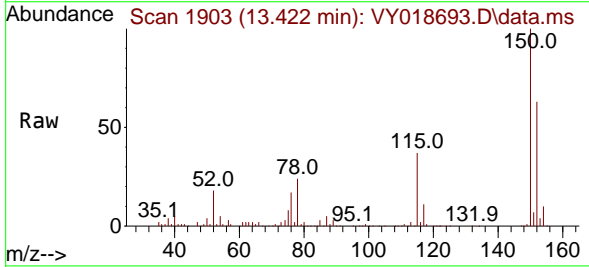
Instrument :
 MSVOA_Y
 ClientSampleId :
 6AB

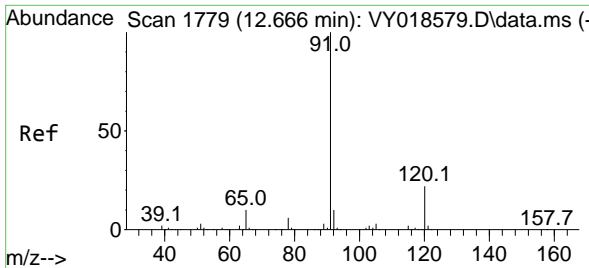
Tgt Ion:106 Resp: 51723
 Ion Ratio Lower Upper
 106 100
 91 203.2 103.6 310.8



#72
 1,4-Dichlorobenzene-d4
 Concen: 50.000 ug/l
 RT: 13.422 min Scan# 1903
 Delta R.T. 0.000 min
 Lab File: VY018693.D
 Acq: 25 Jun 2024 17:11

Tgt Ion:152 Resp: 60046
 Ion Ratio Lower Upper
 152 100
 115 58.2 28.2 84.7
 150 154.9 0.0 345.6

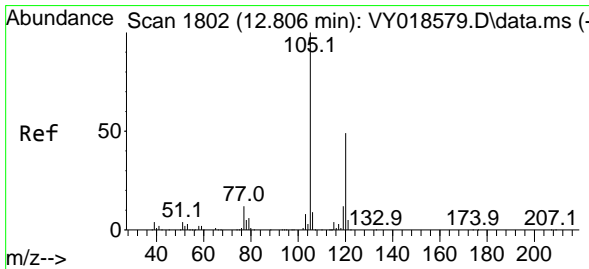
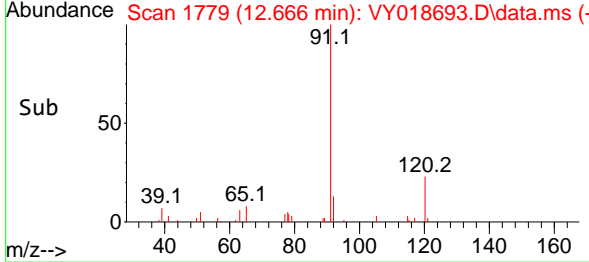
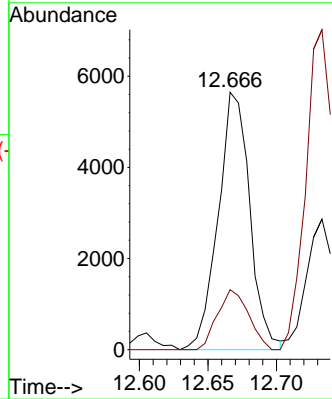
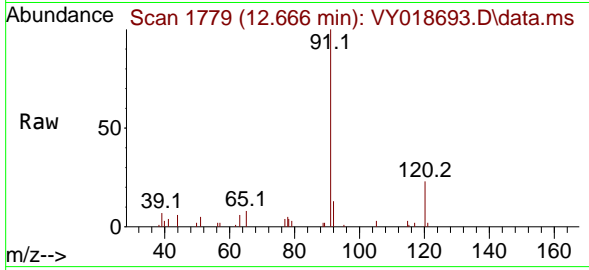




#78
 n-propylbenzene
 Concen: 1.769 ug/l
 RT: 12.666 min Scan# 11
 Delta R.T. 0.000 min
 Lab File: VY018693.D
 Acq: 25 Jun 2024 17:11

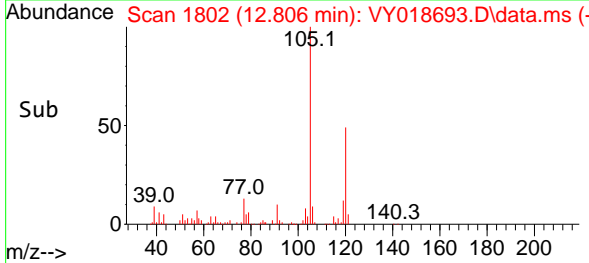
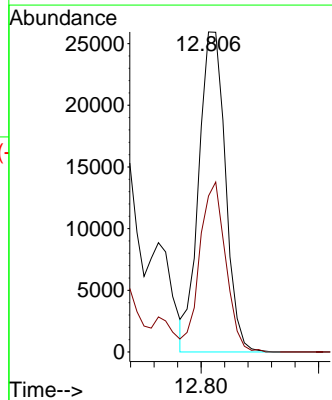
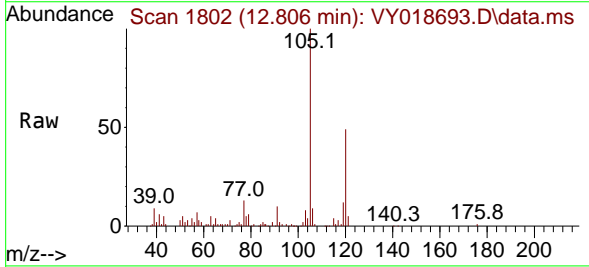
Instrument :
 MSVOA_Y
 ClientSampleId :
 6AB

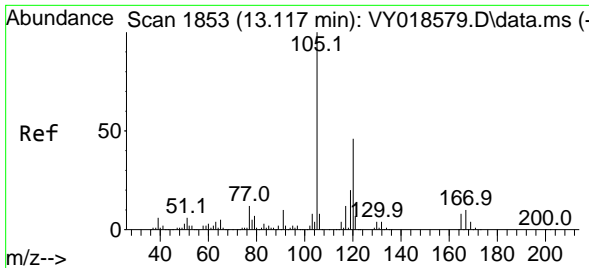
Tgt Ion: 91 Resp: 9076
 Ion Ratio Lower Upper
 91 100
 120 22.9 11.5 34.4



#80
 1,3,5-Trimethylbenzene
 Concen: 11.755 ug/l
 RT: 12.806 min Scan# 1802
 Delta R.T. 0.000 min
 Lab File: VY018693.D
 Acq: 25 Jun 2024 17:11

Tgt Ion: 105 Resp: 40851
 Ion Ratio Lower Upper
 105 100
 120 51.8 25.1 75.2

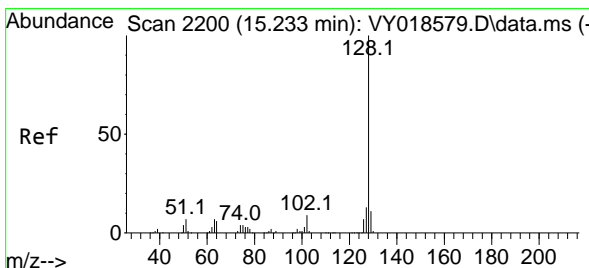
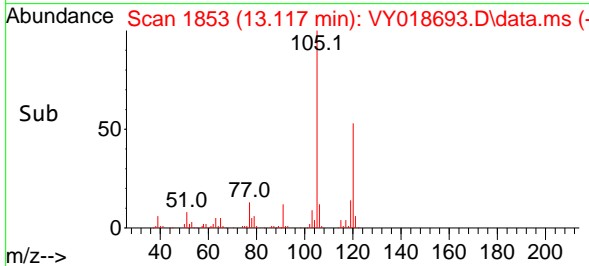
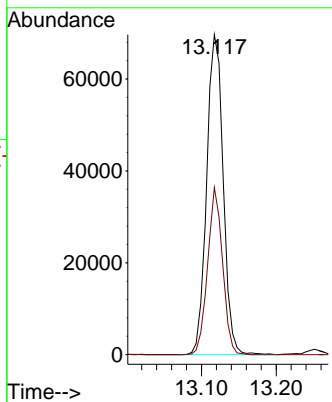
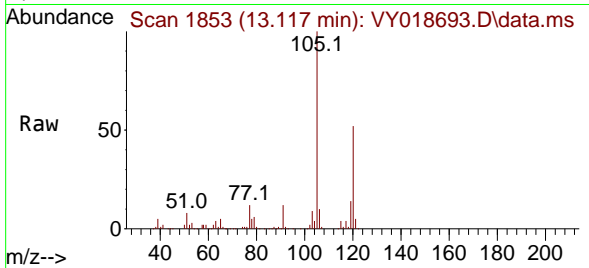




#84
 1,2,4-Trimethylbenzene
 Concen: 30.848 ug/l
 RT: 13.117 min Scan# 1853
 Delta R.T. 0.000 min
 Lab File: VY018693.D
 Acq: 25 Jun 2024 17:11

Instrument : MSVOA_Y
 ClientSampleId : 6AB

Tgt Ion:105 Resp: 107146
 Ion Ratio Lower Upper
 105 100
 120 47.2 23.2 69.6



#95
 Naphthalene
 Concen: 1023.737 ug/l
 RT: 15.233 min Scan# 2200
 Delta R.T. 0.000 min
 Lab File: VY018693.D
 Acq: 25 Jun 2024 17:11

Tgt Ion:128 Resp: 1862210
 Ion Ratio Lower Upper
 128 100
 127 13.0 10.6 16.0
 129 11.0 8.6 13.0

