

Data Path : Z:\voasrv\HPCHEM1\MSVOA_Y\Data\VY070822\
 Data File : VY009491.D
 Acq On : 08 Jul 2022 18:33
 Operator : KP/MD
 Sample : N3595-11
 Misc : 5.68g/5.0mL/MSVOA_Y/SOIL
 ALS Vial : 17 Sample Multiplier: 1

Instrument :
 MSVOA_Y
 ClientSampleId :
 20220490B-8B

Quant Time: Jul 11 02:16:04 2022
 Quant Method : Z:\voasrv\HPCHEM1\MSVOA_Y\methods\82Y070722S.M
 Quant Title : SW846 8260
 QLast Update : Fri Jul 08 11:00:56 2022
 Response via : Initial Calibration

Compound	R.T.	QIon	Response	Conc	Units	Dev(Min)

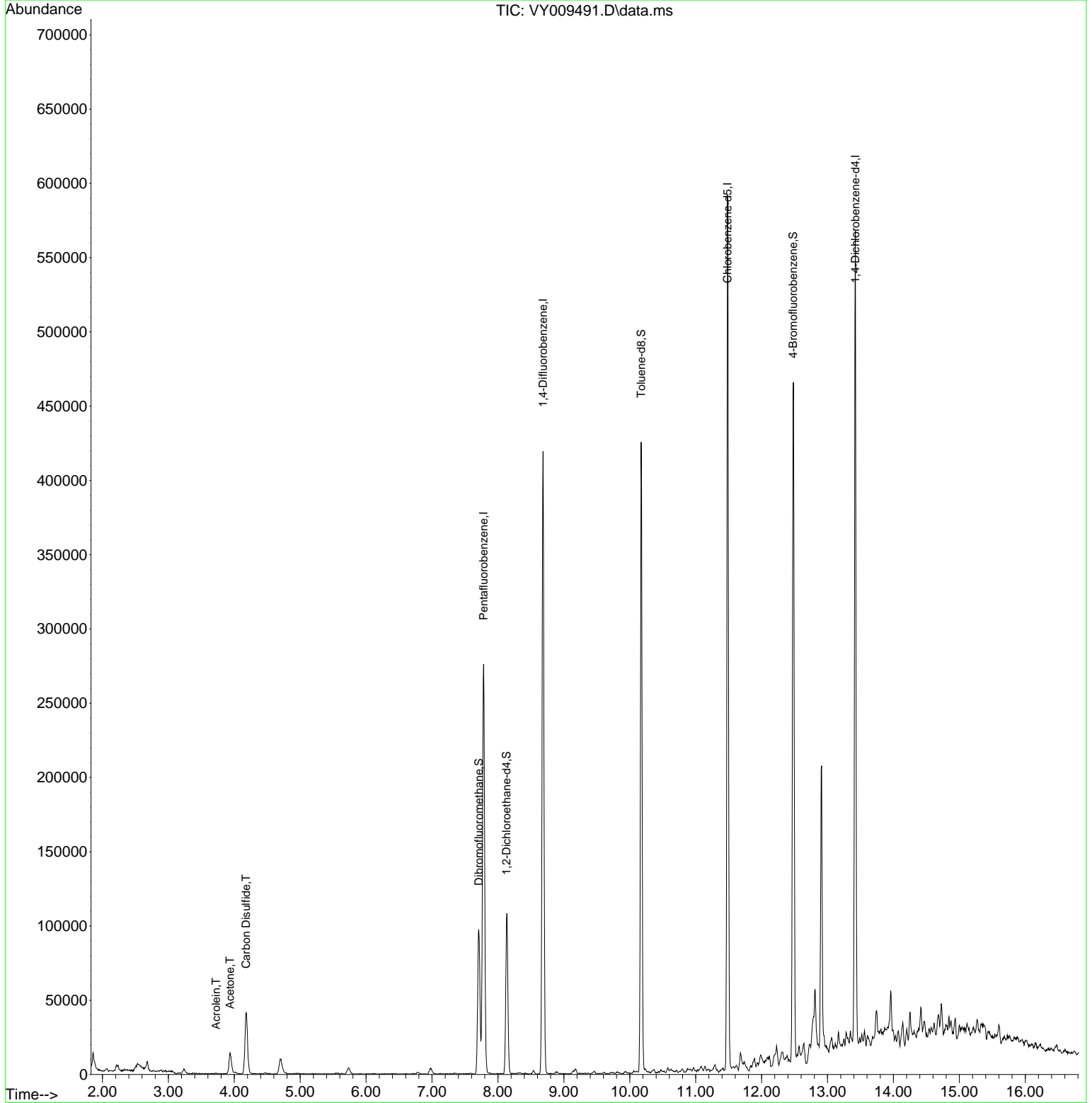
Internal Standards						
1) Pentafluorobenzene	7.783	168	221888	50.000	ug/l	0.00
34) 1,4-Difluorobenzene	8.685	114	356701	50.000	ug/l	0.00
63) Chlorobenzene-d5	11.483	117	311793	50.000	ug/l	0.00
72) 1,4-Dichlorobenzene-d4	13.422	152	137775	50.000	ug/l	0.00
System Monitoring Compounds						
33) 1,2-Dichloroethane-d4	8.130	65	80577	51.783	ug/l	0.00
Spiked Amount	50.000	Range	50 - 163	Recovery	=	103.560%
35) Dibromofluoromethane	7.710	113	70484	37.554	ug/l	0.00
Spiked Amount	50.000	Range	54 - 147	Recovery	=	75.100%
50) Toluene-d8	10.173	98	267180	52.294	ug/l	0.00
Spiked Amount	50.000	Range	78 - 125	Recovery	=	104.580%
62) 4-Bromofluorobenzene	12.477	95	93158	35.163	ug/l	0.00
Spiked Amount	50.000	Range	50 - 146	Recovery	=	70.320%
Target Compounds						
					Qvalue	
13) Acrolein	3.723	56	400	32.241	ug/l #	59
16) Acetone	3.936	43	23804	44.100	ug/l	90
17) Carbon Disulfide	4.180	76	84003	17.116	ug/l	99

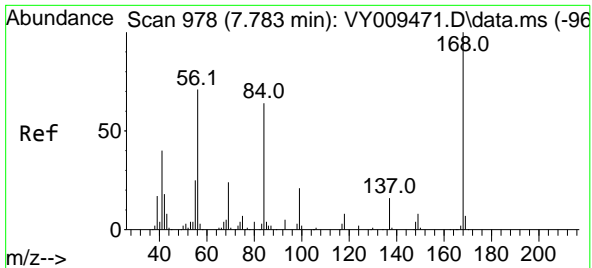
(#) = qualifier out of range (m) = manual integration (+) = signals summed

Data Path : Z:\voasrv\HPCHEM1\MSVOA_Y\Data\VY070822\
 Data File : VY009491.D
 Acq On : 08 Jul 2022 18:33
 Operator : KP/MD
 Sample : N3595-11
 Misc : 5.68g/5.0mL/MSVOA_Y/SOIL
 ALS Vial : 17 Sample Multiplier: 1

Instrument :
 MSVOA_Y
 ClientSampleId :
 20220490B-8B

Quant Time: Jul 11 02:16:04 2022
 Quant Method : Z:\voasrv\HPCHEM1\MSVOA_Y\methods\82Y070722S.M
 Quant Title : SW846 8260
 QLast Update : Fri Jul 08 11:00:56 2022
 Response via : Initial Calibration

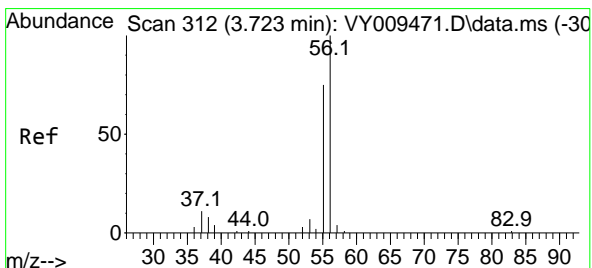
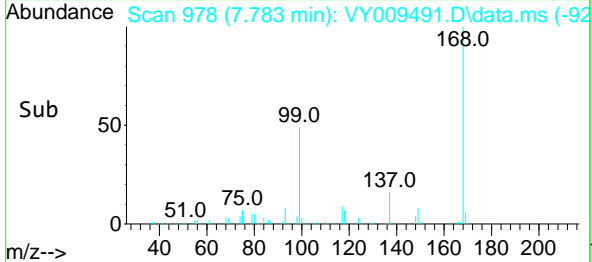
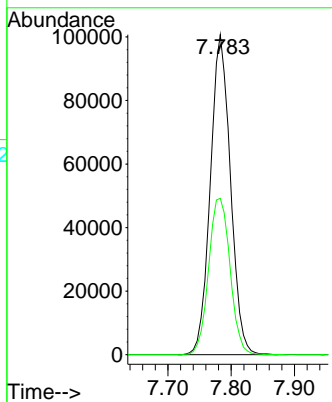
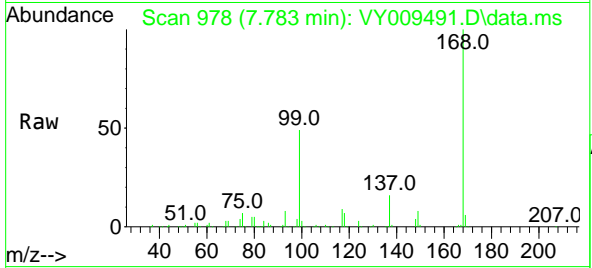




#1
 Pentafluorobenzene
 Concen: 50.000 ug/l
 RT: 7.783 min Scan# 91
 Delta R.T. -0.000 min
 Lab File: VY009491.D
 Acq: 08 Jul 2022 18:33

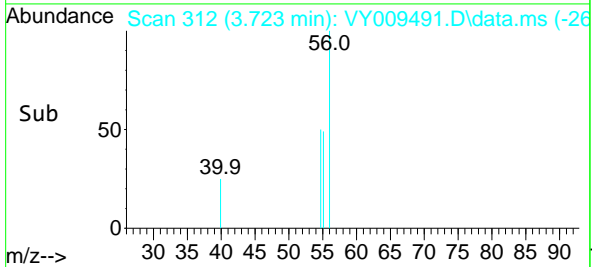
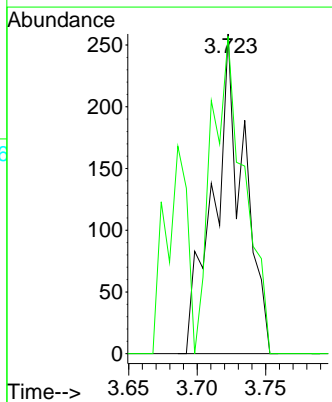
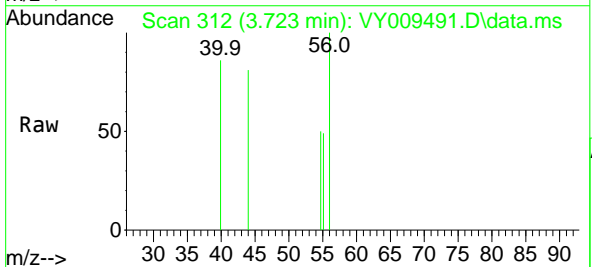
Instrument : MSVOA_Y
 ClientSampleId : 20220490B-8B

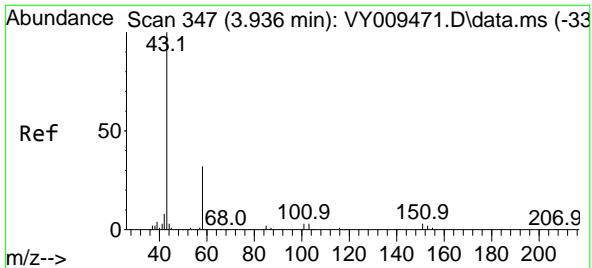
Tgt Ion:168 Resp: 221888
 Ion Ratio Lower Upper
 168 100
 99 48.9 46.9 70.3



#13
 Acrolein
 Concen: 32.241 ug/l
 RT: 3.723 min Scan# 312
 Delta R.T. -0.000 min
 Lab File: VY009491.D
 Acq: 08 Jul 2022 18:33

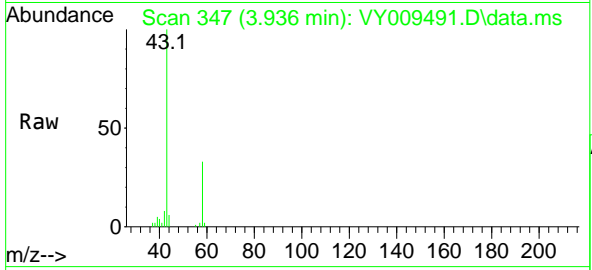
Tgt Ion: 56 Resp: 400
 Ion Ratio Lower Upper
 56 100
 55 106.5 57.6 86.4#



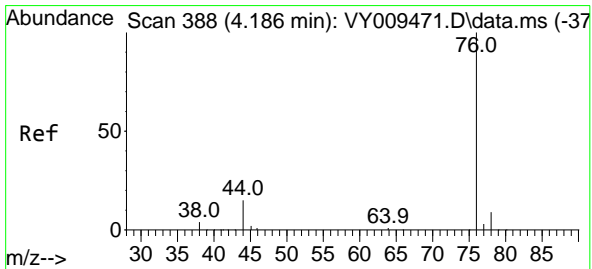
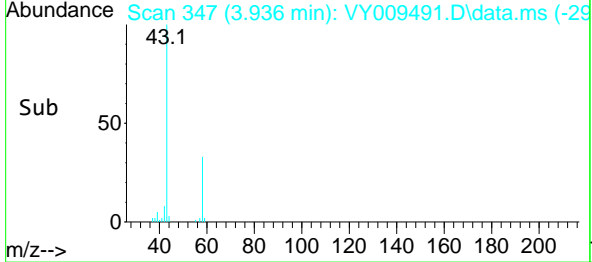
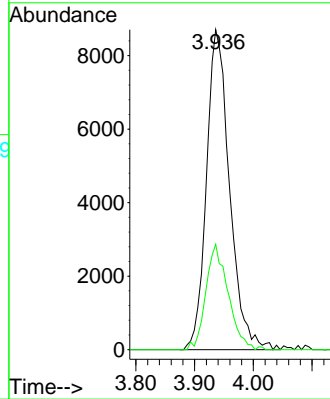


#16
 Acetone
 Concen: 44.100 ug/l
 RT: 3.936 min Scan# 34
 Delta R.T. -0.000 min
 Lab File: VY009491.D
 Acq: 08 Jul 2022 18:33

Instrument :
 MSVOA_Y
 ClientSampleId :
 20220490B-8B

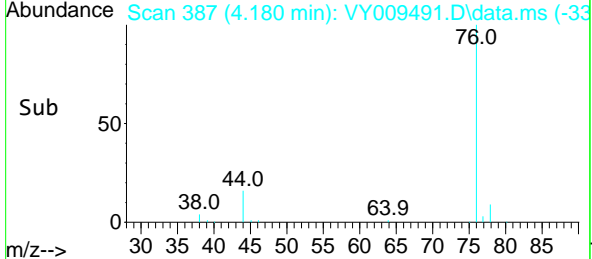
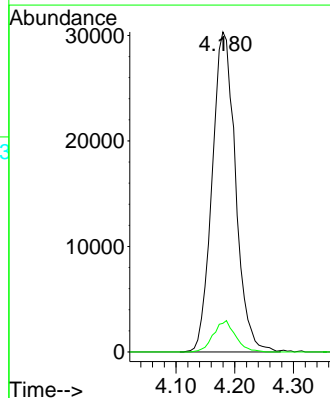
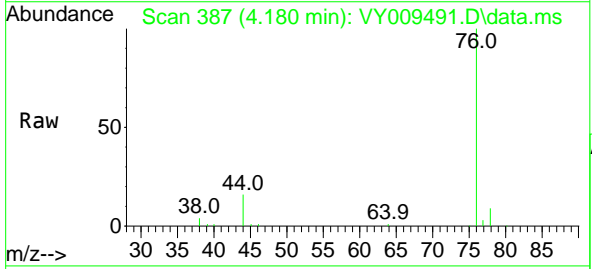


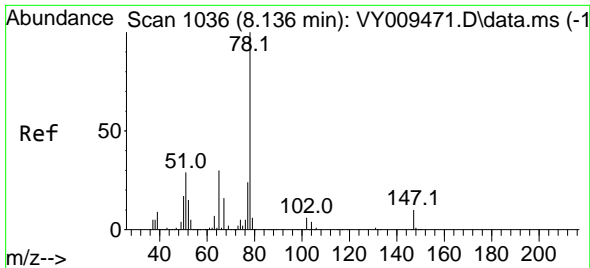
Tgt Ion: 43 Resp: 23804
 Ion Ratio Lower Upper
 43 100
 58 32.9 22.0 33.0



#17
 Carbon Disulfide
 Concen: 17.116 ug/l
 RT: 4.180 min Scan# 387
 Delta R.T. -0.006 min
 Lab File: VY009491.D
 Acq: 08 Jul 2022 18:33

Tgt Ion: 76 Resp: 84003
 Ion Ratio Lower Upper
 76 100
 78 9.0 7.4 11.0

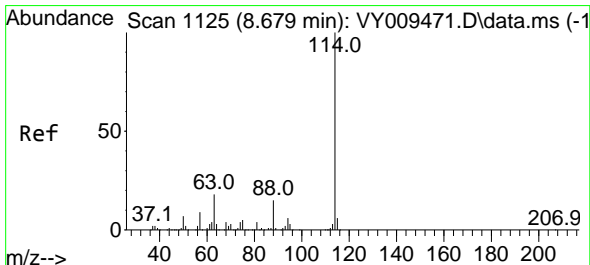
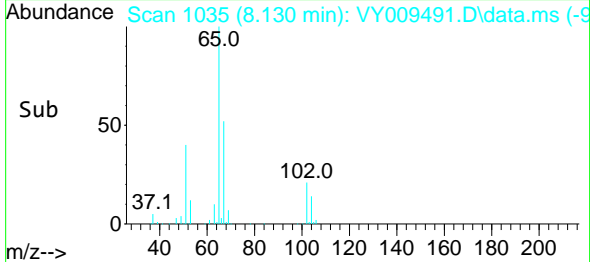
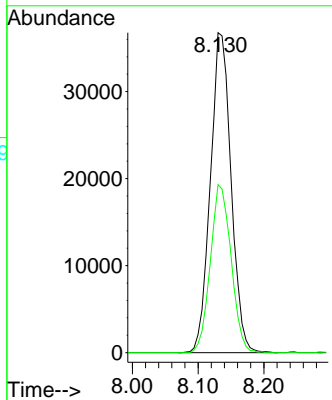
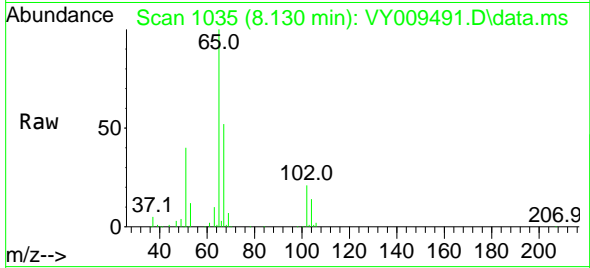




#33
 1,2-Dichloroethane-d4
 Concen: 51.783 ug/l
 RT: 8.130 min Scan# 1036
 Delta R.T. -0.006 min
 Lab File: VY009491.D
 Acq: 08 Jul 2022 18:33

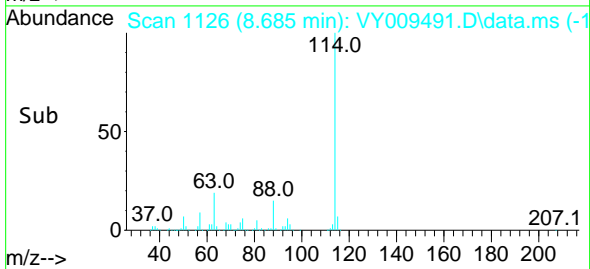
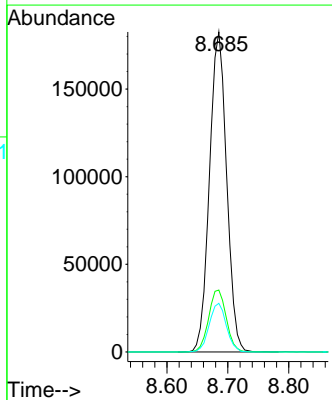
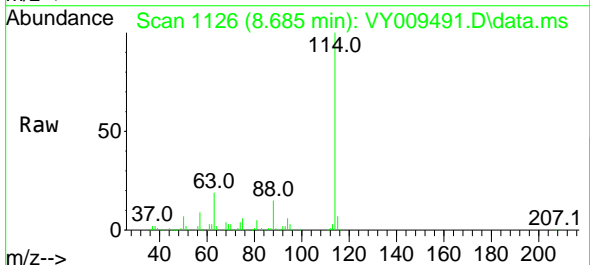
Instrument : MSVOA_Y
 ClientSampleId : 20220490B-8B

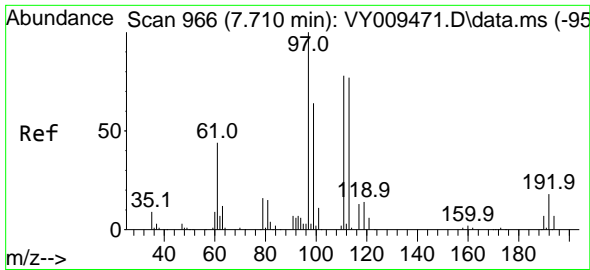
Tgt Ion: 65 Resp: 80577
 Ion Ratio Lower Upper
 65 100
 67 52.6 0.0 99.4



#34
 1,4-Difluorobenzene
 Concen: 50.000 ug/l
 RT: 8.685 min Scan# 1126
 Delta R.T. 0.006 min
 Lab File: VY009491.D
 Acq: 08 Jul 2022 18:33

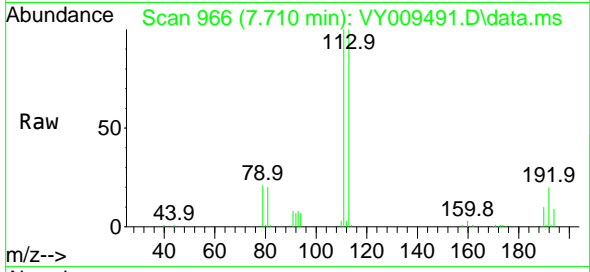
Tgt Ion:114 Resp: 356701
 Ion Ratio Lower Upper
 114 100
 63 19.4 0.0 43.2
 88 15.2 0.0 31.8



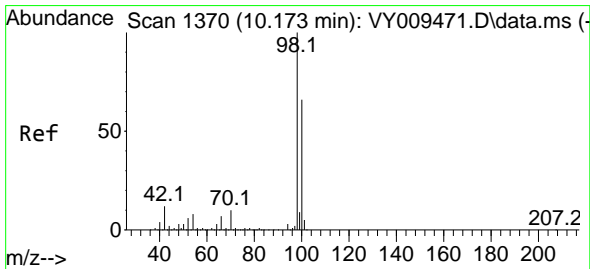
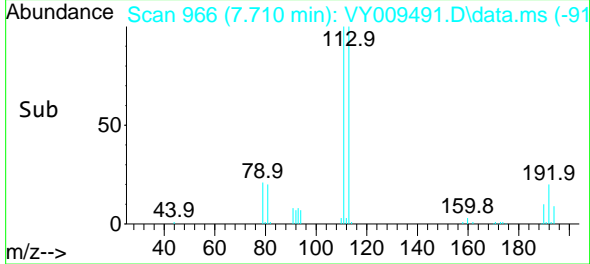
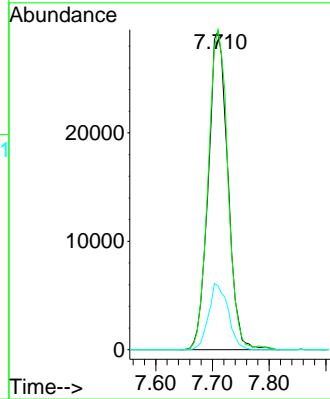


#35
 Dibromofluoromethane
 Concen: 37.554 ug/l
 RT: 7.710 min Scan# 91
 Delta R.T. -0.000 min
 Lab File: VY009491.D
 Acq: 08 Jul 2022 18:33

Instrument : MSVOA_Y
 ClientSampleId : 20220490B-8B

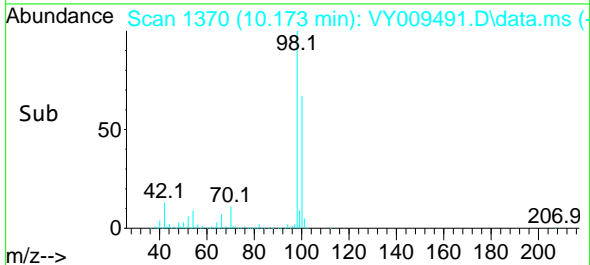
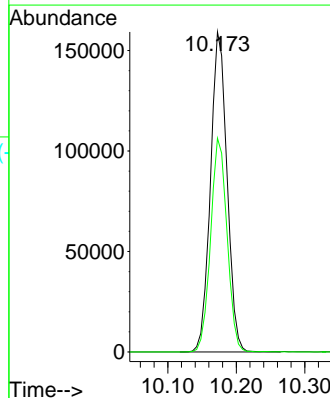
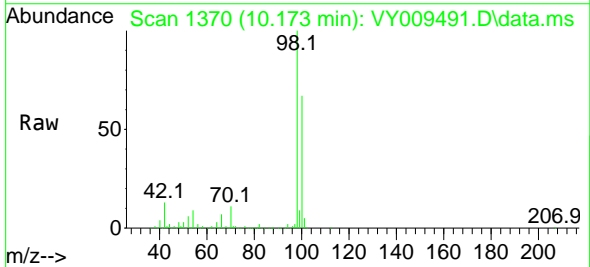


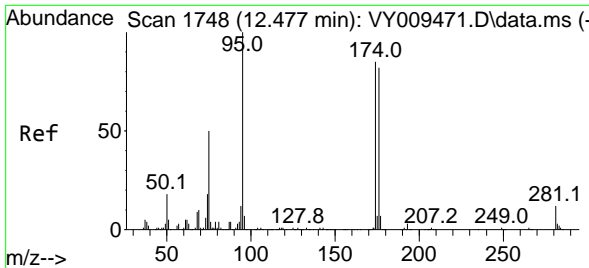
Tgt Ion:113 Resp: 70484
 Ion Ratio Lower Upper
 113 100
 111 101.4 82.6 124.0
 192 20.7 17.6 26.4



#50
 Toluene-d8
 Concen: 52.294 ug/l
 RT: 10.173 min Scan# 1370
 Delta R.T. -0.000 min
 Lab File: VY009491.D
 Acq: 08 Jul 2022 18:33

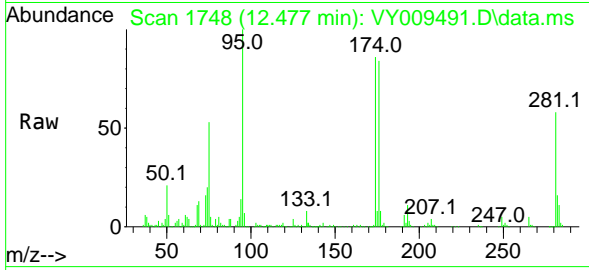
Tgt Ion: 98 Resp: 267180
 Ion Ratio Lower Upper
 98 100
 100 66.2 50.2 75.2





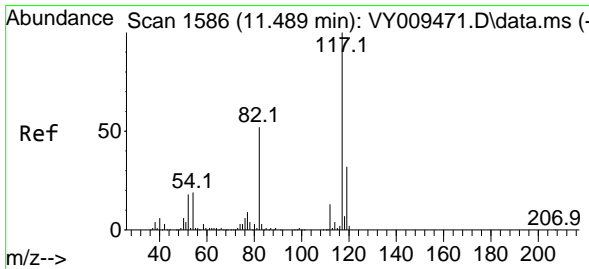
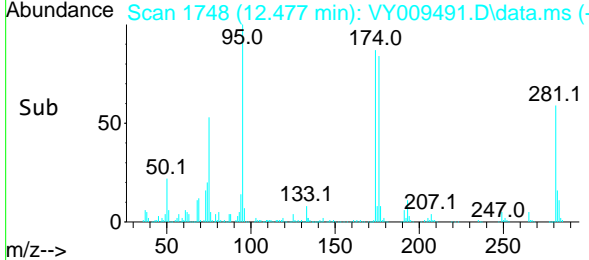
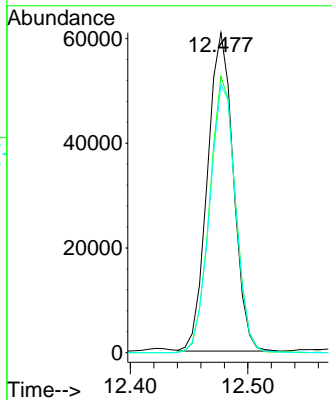
#62
 4-Bromofluorobenzene
 Concen: 35.163 ug/l
 RT: 12.477 min Scan# 11
 Delta R.T. 0.000 min
 Lab File: VY009491.D
 Acq: 08 Jul 2022 18:33

Instrument : MSVOA_Y
 ClientSampleId : 20220490B-8B



Tgt Ion: 95 Resp: 93158

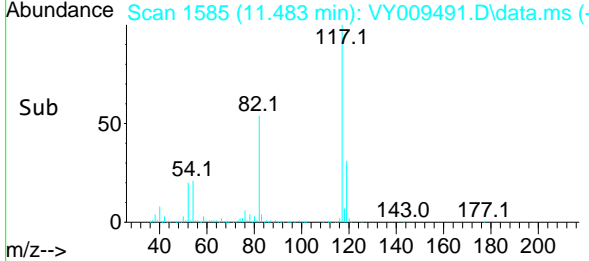
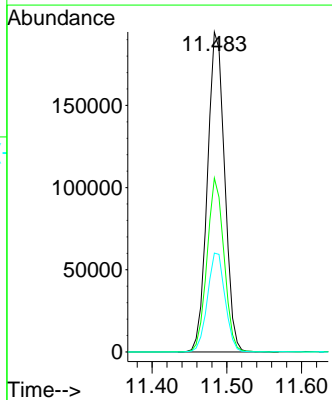
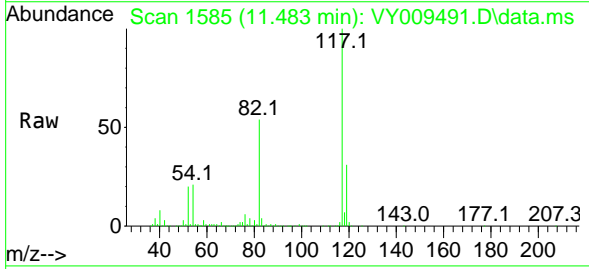
Ion	Ratio	Lower	Upper
95	100		
174	86.7	0.0	177.0
176	84.8	0.0	175.8

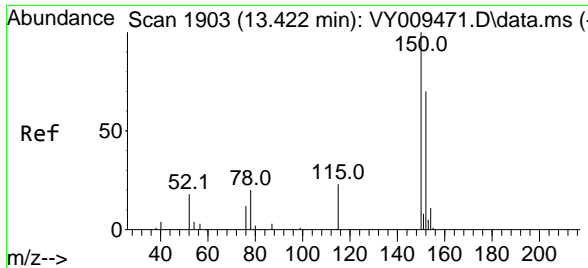


#63
 Chlorobenzene-d5
 Concen: 50.000 ug/l
 RT: 11.483 min Scan# 1585
 Delta R.T. -0.006 min
 Lab File: VY009491.D
 Acq: 08 Jul 2022 18:33

Tgt Ion: 117 Resp: 311793

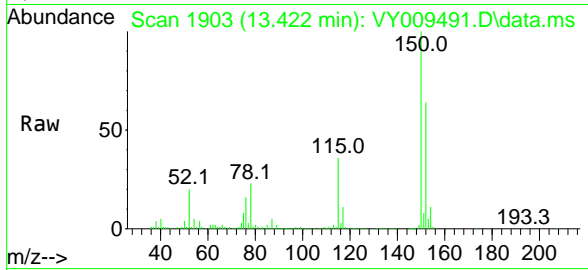
Ion	Ratio	Lower	Upper
117	100		
82	54.3	43.0	64.4
119	30.9	25.4	38.0





#72
 1,4-Dichlorobenzene-d4
 Concen: 50.000 ug/l
 RT: 13.422 min Scan# 1903
 Delta R.T. -0.000 min
 Lab File: VY009491.D
 Acq: 08 Jul 2022 18:33

Instrument : MSVOA_Y
 ClientSampleId : 20220490B-8B



Tgt Ion	Resp	Lower	Upper
152	137775		
152	100		
115	57.6	28.2	84.7
150	157.4	0.0	347.6

