

Data Path : Z:\voasrv\HPCHEM1\MSVOA_Y\Data\VY070822\
 Data File : VY009493.D
 Acq On : 08 Jul 2022 19:20
 Operator : KP/MD
 Sample : N3595-13
 Misc : 4.28g/5.0mL/MSVOA_Y/SOIL
 ALS Vial : 19 Sample Multiplier: 1

Instrument :
 MSVOA_Y
 ClientSampleId :
 20220491A-9A

Quant Time: Jul 11 02:16:20 2022
 Quant Method : Z:\voasrv\HPCHEM1\MSVOA_Y\methods\82Y070722S.M
 Quant Title : SW846 8260
 QLast Update : Fri Jul 08 11:00:56 2022
 Response via : Initial Calibration

Compound	R.T.	QIon	Response	Conc	Units	Dev(Min)

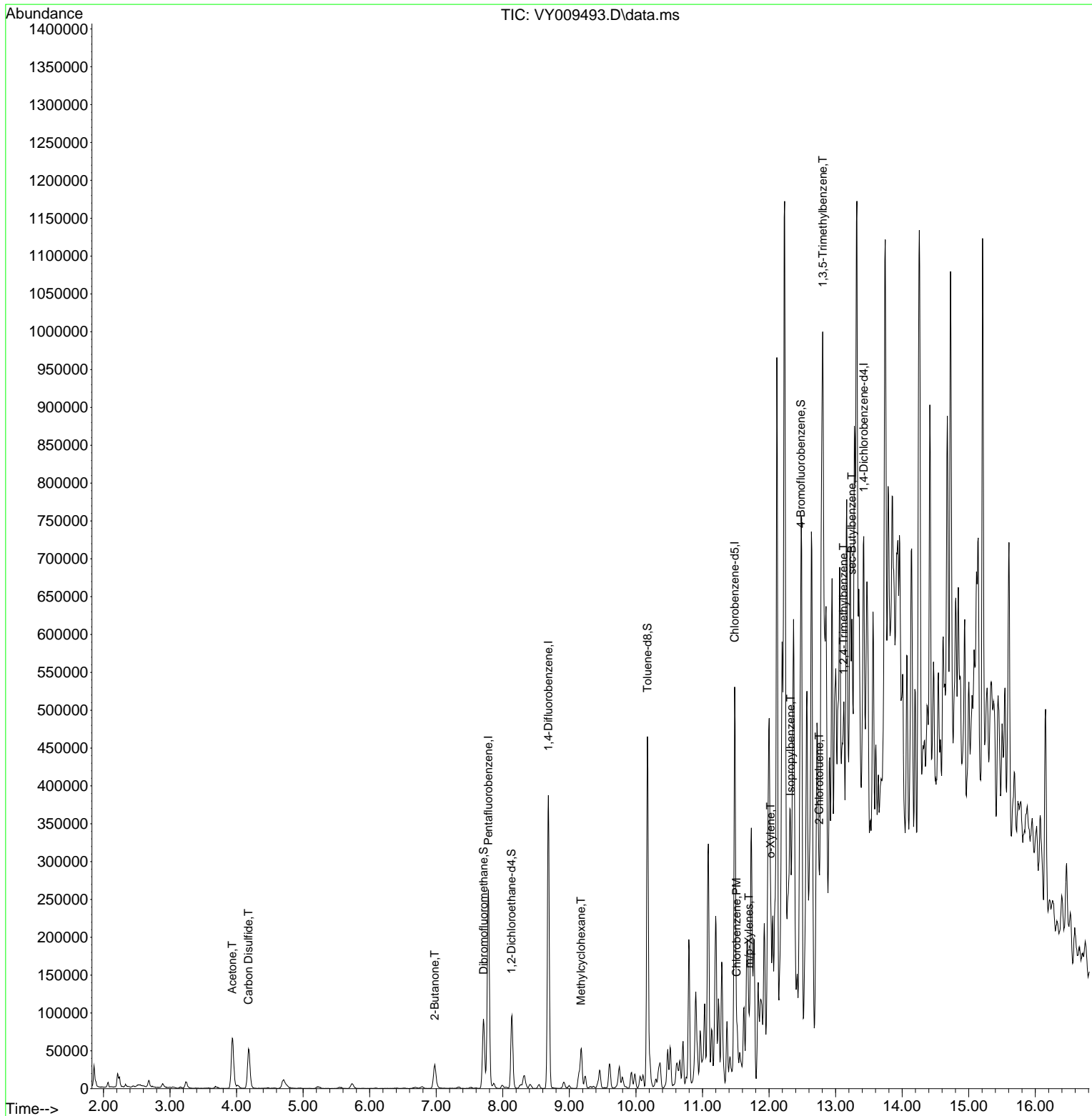
Internal Standards						
1) Pentafluorobenzene	7.783	168	206292	50.000	ug/l	0.00
34) 1,4-Difluorobenzene	8.685	114	325960	50.000	ug/l	0.00
63) Chlorobenzene-d5	11.484	117	266798	50.000	ug/l	0.00
72) 1,4-Dichlorobenzene-d4	13.422	152	109818	50.000	ug/l	0.00
System Monitoring Compounds						
33) 1,2-Dichloroethane-d4	8.130	65	71478	49.067	ug/l	0.00
Spiked Amount	50.000	Range	50 - 163	Recovery	=	98.140%
35) Dibromofluoromethane	7.710	113	61479	35.846	ug/l	0.00
Spiked Amount	50.000	Range	54 - 147	Recovery	=	71.700%
50) Toluene-d8	10.173	98	249965	53.769	ug/l	0.00
Spiked Amount	50.000	Range	78 - 125	Recovery	=	107.540%
62) 4-Bromofluorobenzene	12.477	95	91120	37.637	ug/l	0.00
Spiked Amount	50.000	Range	50 - 146	Recovery	=	75.280%
Target Compounds						
						Qvalue
16) Acetone	3.936	43	113733	226.634	ug/l	92
17) Carbon Disulfide	4.180	76	102236	21.040	ug/l	97
25) 2-Butanone	6.978	43	40272	49.608	ug/l	94
39) Methylcyclohexane	9.173	83	19297	5.757	ug/l	95
65) Chlorobenzene	11.514	112	13096	2.499	ug/l	99
68) m/p-Xylenes	11.697	106	9865	2.765	ug/l	95
69) o-Xylene	12.026	106	18214	5.326	ug/l	99
73) Isopropylbenzene	12.325	105	11487	1.529	ug/l	98
79) 2-Chlorotoluene	12.752	91	12814	2.523	ug/l	84
80) 1,3,5-Trimethylbenzene	12.806	105	9230	1.470	ug/l	94
84) 1,2,4-Trimethylbenzene	13.117	105	38770	6.205	ug/l	98
85) sec-Butylbenzene	13.245	105	11955	1.453	ug/l #	74

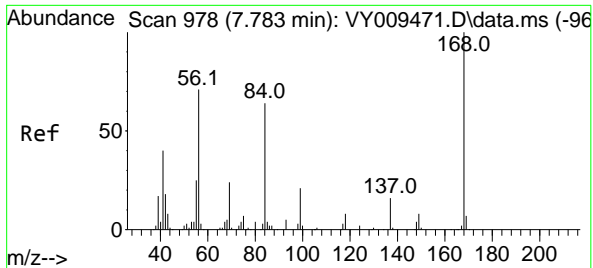
(#) = qualifier out of range (m) = manual integration (+) = signals summed

Data Path : Z:\voasrv\HPCHEM1\MSVOA_Y\Data\VY070822\
 Data File : VY009493.D
 Acq On : 08 Jul 2022 19:20
 Operator : KP/MD
 Sample : N3595-13
 Misc : 4.28g/5.0mL/MSVOA_Y/SOIL
 ALS Vial : 19 Sample Multiplier: 1

Instrument :
 MSVOA_Y
 ClientSampleId :
 20220491A-9A

Quant Time: Jul 11 02:16:20 2022
 Quant Method : Z:\voasrv\HPCHEM1\MSVOA_Y\methods\82Y070722S.M
 Quant Title : SW846 8260
 QLast Update : Fri Jul 08 11:00:56 2022
 Response via : Initial Calibration

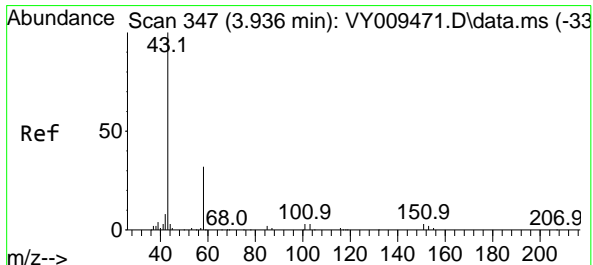
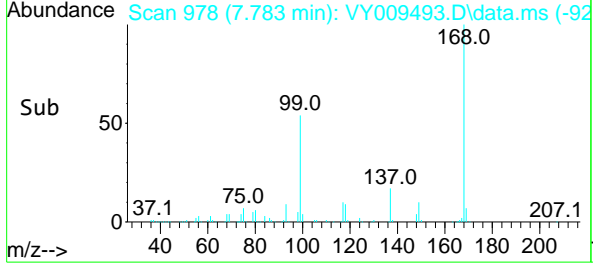
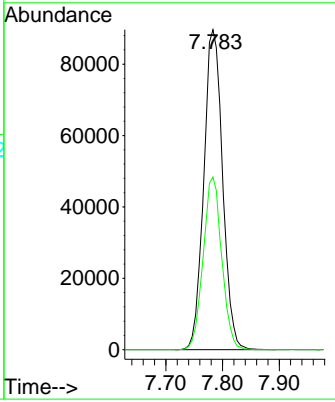
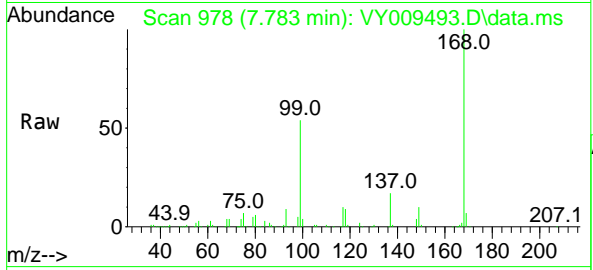




#1
 Pentafluorobenzene
 Concen: 50.000 ug/l
 RT: 7.783 min Scan# 91
 Delta R.T. -0.000 min
 Lab File: VY009493.D
 Acq: 08 Jul 2022 19:20

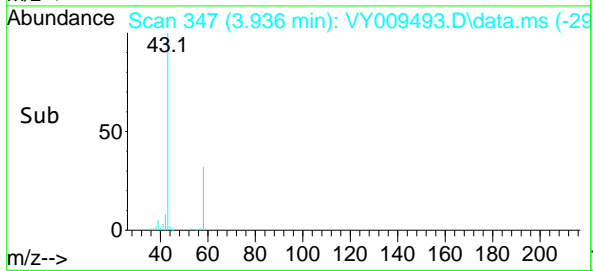
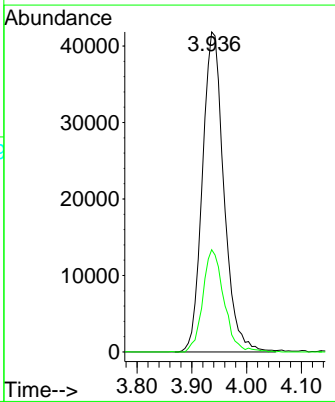
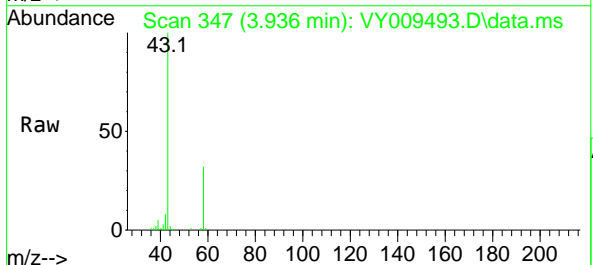
Instrument : MSVOA_Y
 ClientSampleId : 20220491A-9A

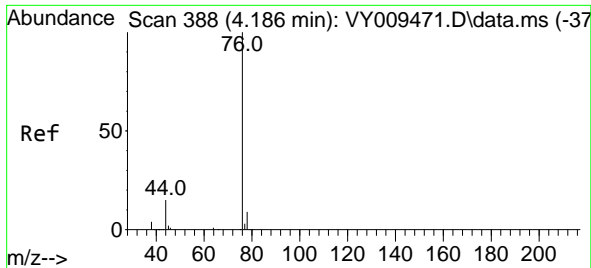
Tgt Ion:168 Resp: 206292
 Ion Ratio Lower Upper
 168 100
 99 54.0 46.9 70.3



#16
 Acetone
 Concen: 226.634 ug/l
 RT: 3.936 min Scan# 347
 Delta R.T. 0.000 min
 Lab File: VY009493.D
 Acq: 08 Jul 2022 19:20

Tgt Ion: 43 Resp: 113733
 Ion Ratio Lower Upper
 43 100
 58 31.9 22.0 33.0

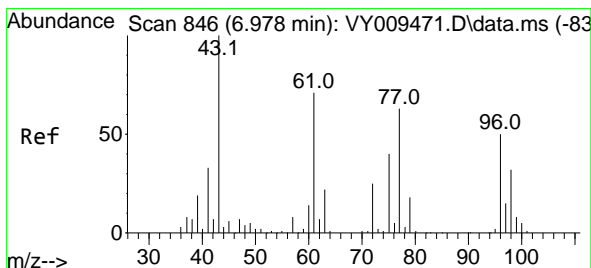
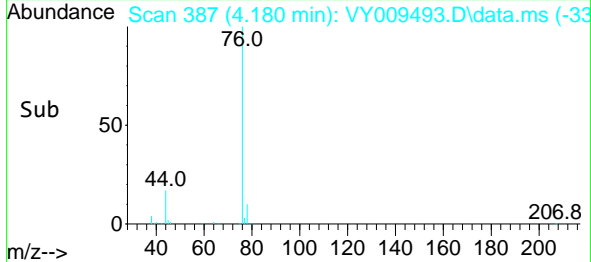
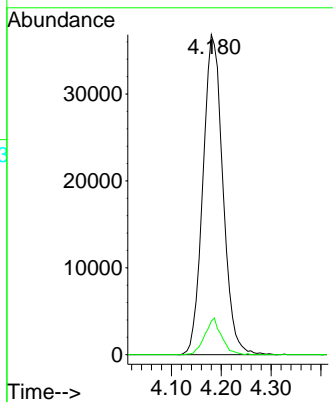
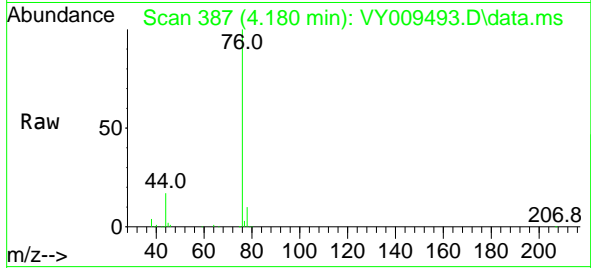




#17
 Carbon Disulfide
 Concen: 21.040 ug/l
 RT: 4.180 min Scan# 387
 Delta R.T. -0.006 min
 Lab File: VY009493.D
 Acq: 08 Jul 2022 19:20

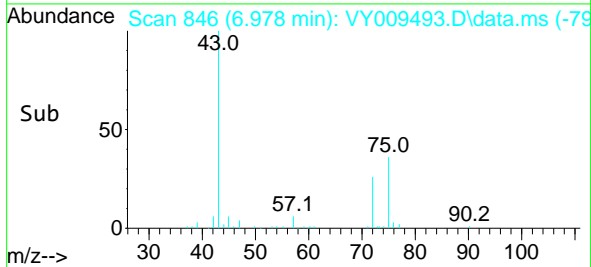
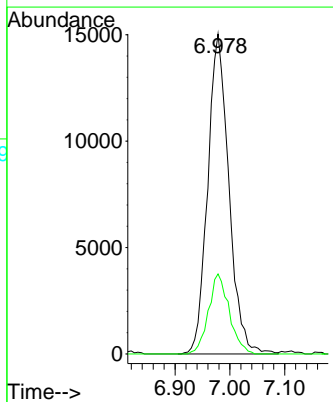
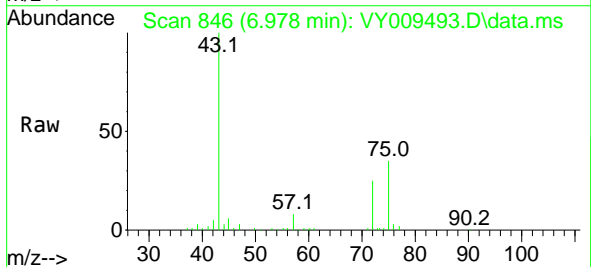
Instrument : MSVOA_Y
 ClientSampleId : 20220491A-9A

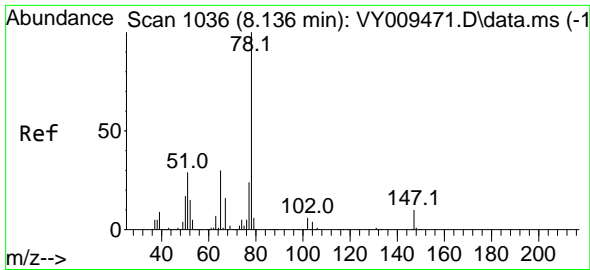
Tgt Ion: 76 Resp: 102236
 Ion Ratio Lower Upper
 76 100
 78 10.5 7.4 11.0



#25
 2-Butanone
 Concen: 49.608 ug/l
 RT: 6.978 min Scan# 846
 Delta R.T. 0.000 min
 Lab File: VY009493.D
 Acq: 08 Jul 2022 19:20

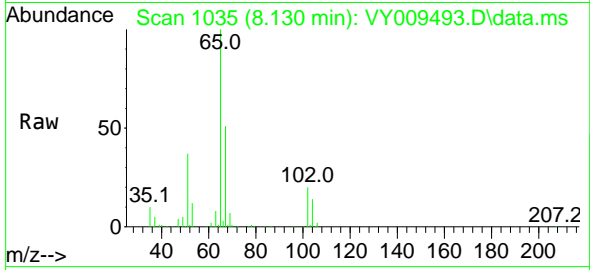
Tgt Ion: 43 Resp: 40272
 Ion Ratio Lower Upper
 43 100
 72 25.0 17.7 26.5



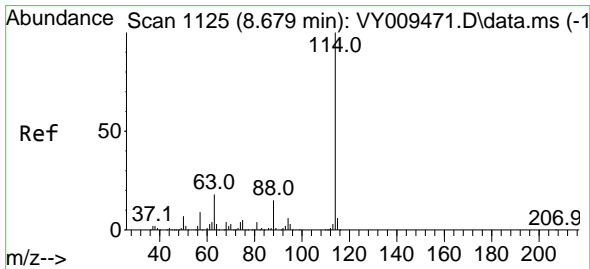
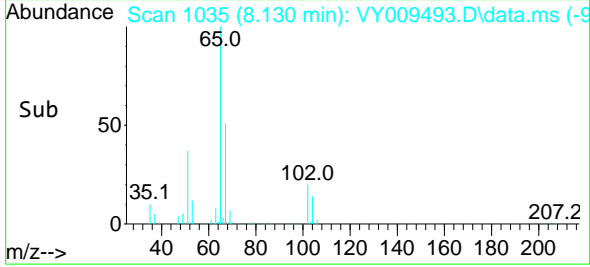
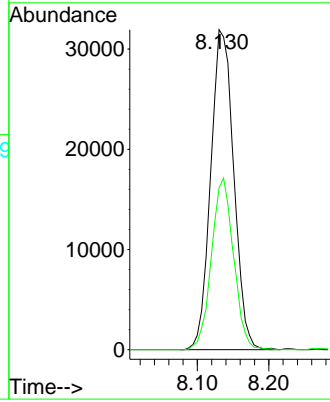


#33
 1,2-Dichloroethane-d4
 Concen: 49.067 ug/l
 RT: 8.130 min Scan# 1035
 Delta R.T. -0.006 min
 Lab File: VY009493.D
 Acq: 08 Jul 2022 19:20

Instrument : MSVOA_Y
 ClientSampleId : 20220491A-9A

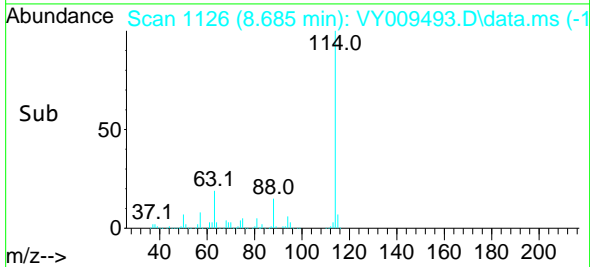
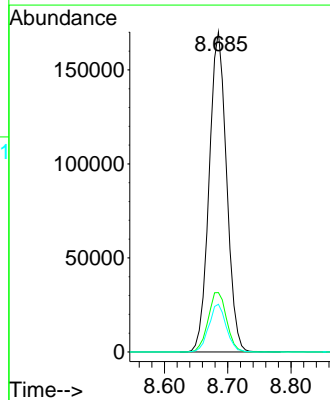
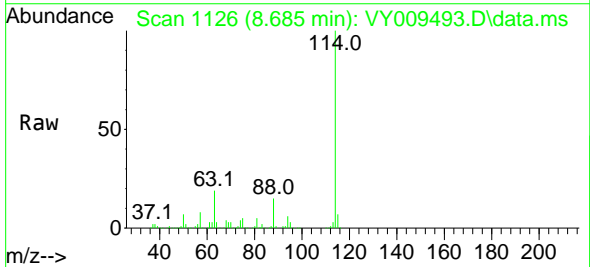


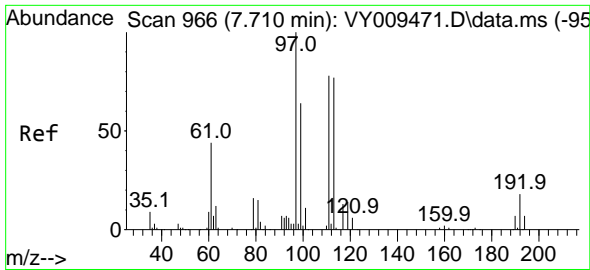
Tgt Ion: 65 Resp: 71478
 Ion Ratio Lower Upper
 65 100
 67 51.4 0.0 99.4



#34
 1,4-Difluorobenzene
 Concen: 50.000 ug/l
 RT: 8.685 min Scan# 1126
 Delta R.T. 0.006 min
 Lab File: VY009493.D
 Acq: 08 Jul 2022 19:20

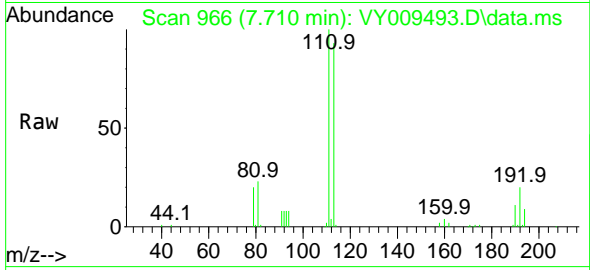
Tgt Ion: 114 Resp: 325960
 Ion Ratio Lower Upper
 114 100
 63 18.6 0.0 43.2
 88 14.9 0.0 31.8



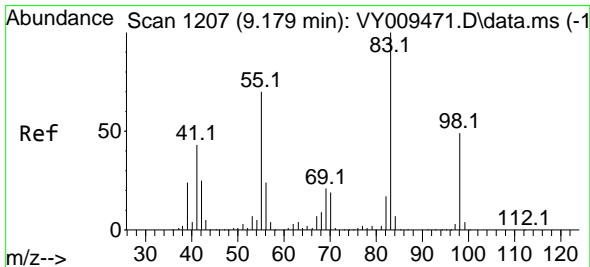
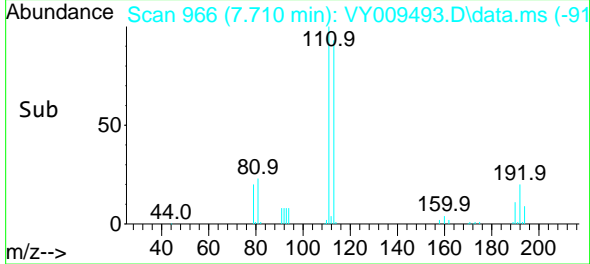
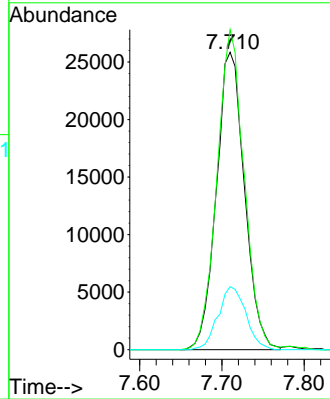


#35
 Dibromofluoromethane
 Concen: 35.846 ug/l
 RT: 7.710 min Scan# 91
 Delta R.T. -0.000 min
 Lab File: VY009493.D
 Acq: 08 Jul 2022 19:20

Instrument : MSVOA_Y
 ClientSampleId : 20220491A-9A

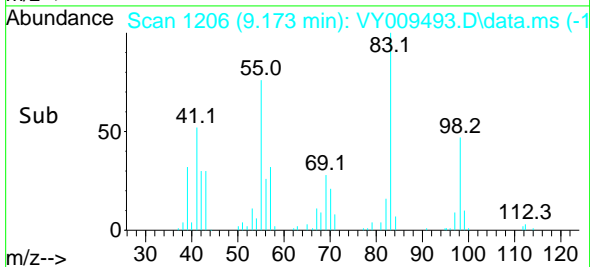
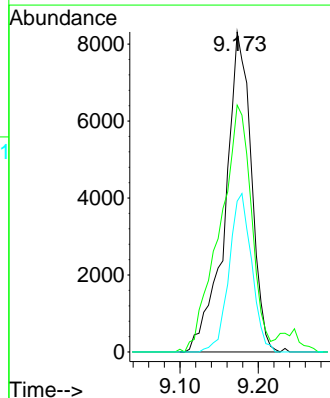
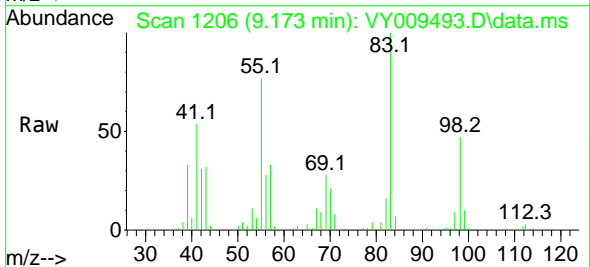


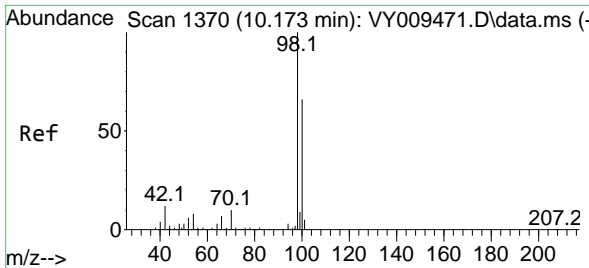
Tgt Ion:113 Resp: 61479
 Ion Ratio Lower Upper
 113 100
 111 104.1 82.6 124.0
 192 21.0 17.6 26.4



#39
 Methylcyclohexane
 Concen: 5.757 ug/l
 RT: 9.173 min Scan# 1206
 Delta R.T. -0.006 min
 Lab File: VY009493.D
 Acq: 08 Jul 2022 19:20

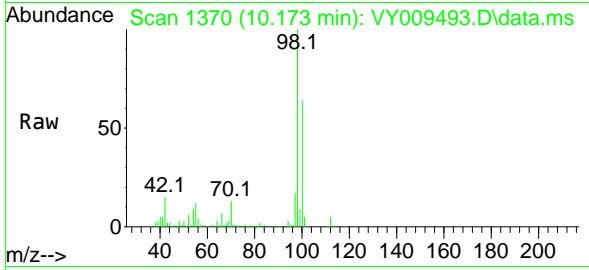
Tgt Ion: 83 Resp: 19297
 Ion Ratio Lower Upper
 83 100
 55 76.3 66.5 99.7
 98 47.1 37.9 56.9



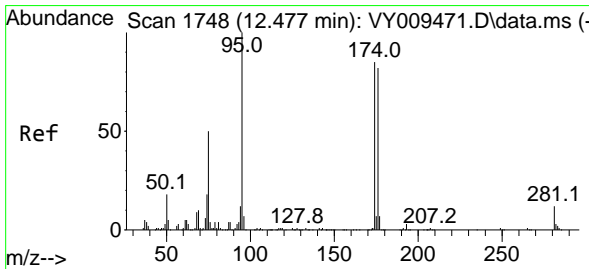
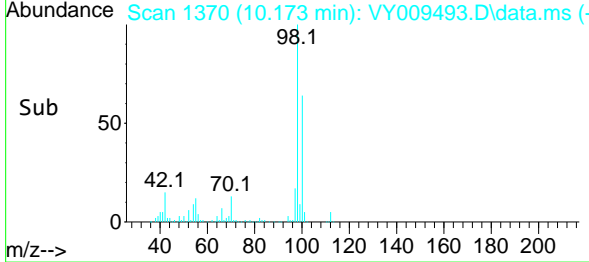
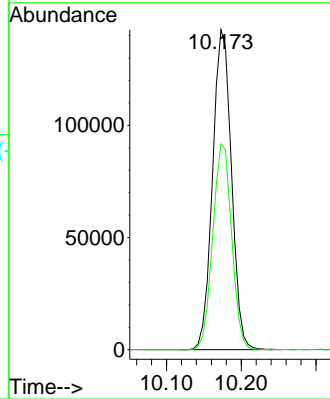


#50
 Toluene-d8
 Concen: 53.769 ug/l
 RT: 10.173 min Scan# 11
 Delta R.T. -0.000 min
 Lab File: VY009493.D
 Acq: 08 Jul 2022 19:20

Instrument : MSVOA_Y
 ClientSampleId : 20220491A-9A

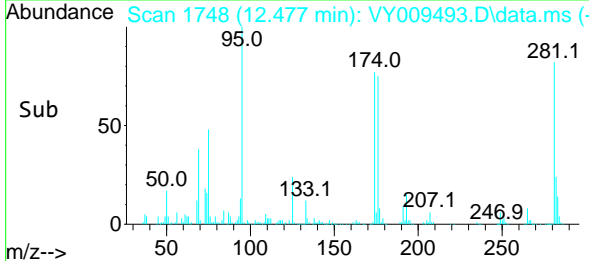
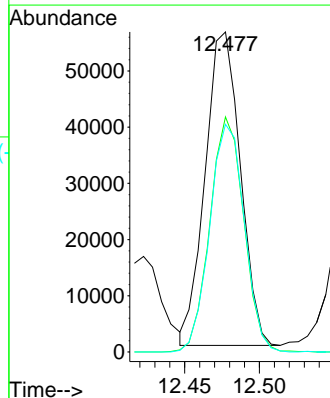
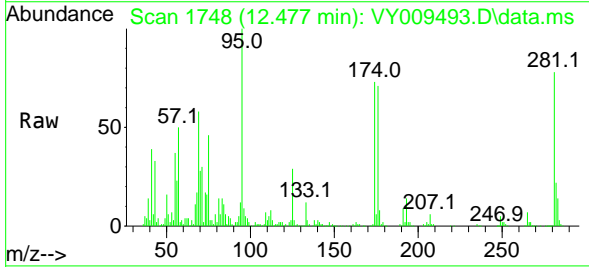


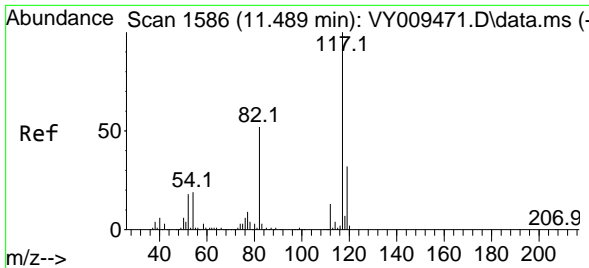
Tgt Ion: 98 Resp: 249965
 Ion Ratio Lower Upper
 98 100
 100 64.5 50.2 75.2



#62
 4-Bromofluorobenzene
 Concen: 37.637 ug/l
 RT: 12.477 min Scan# 1748
 Delta R.T. 0.000 min
 Lab File: VY009493.D
 Acq: 08 Jul 2022 19:20

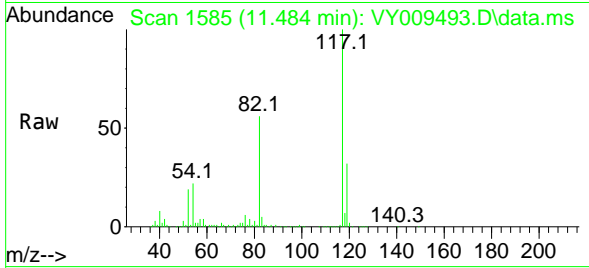
Tgt Ion: 95 Resp: 91120
 Ion Ratio Lower Upper
 95 100
 174 72.3 0.0 177.0
 176 71.6 0.0 175.8



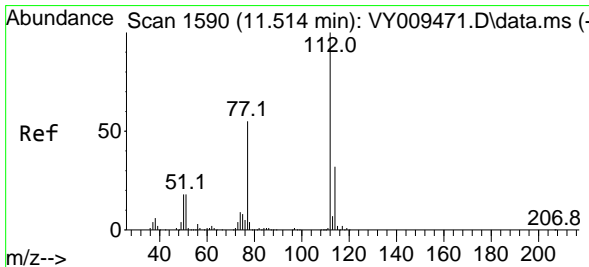
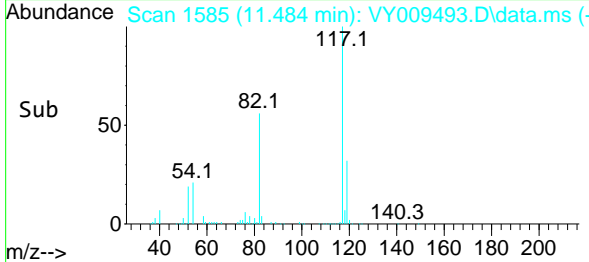
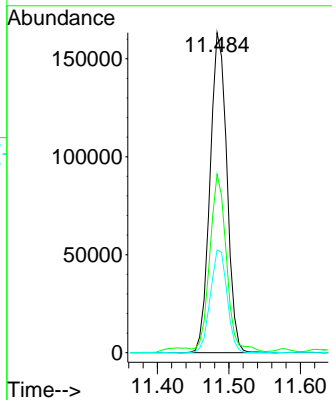


#63
 Chlorobenzene-d5
 Concen: 50.000 ug/l
 RT: 11.484 min Scan# 117
 Delta R.T. -0.005 min
 Lab File: VY009493.D
 Acq: 08 Jul 2022 19:20

Instrument : MSVOA_Y
 ClientSampleId : 20220491A-9A

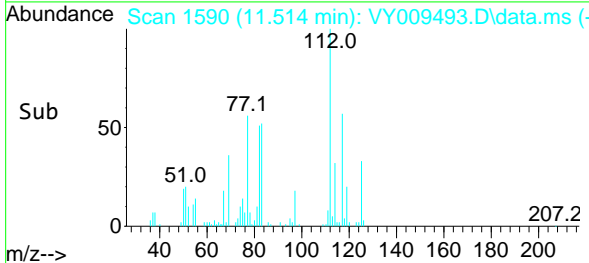
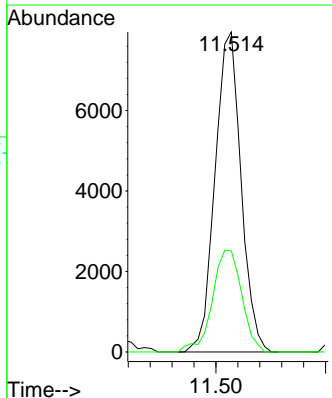
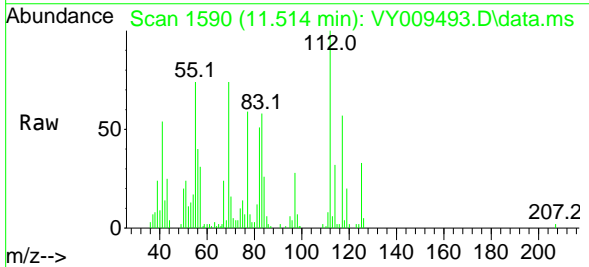


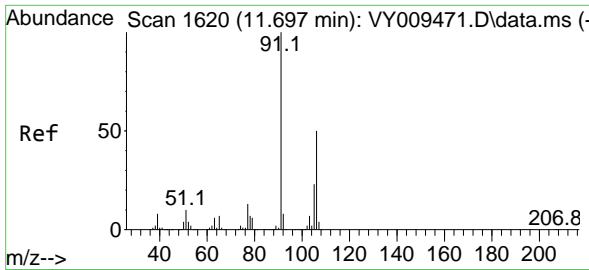
Tgt Ion	Resp	Lower	Upper
117	100		
82	54.8	43.0	64.4
119	32.1	25.4	38.0



#65
 Chlorobenzene
 Concen: 2.499 ug/l
 RT: 11.514 min Scan# 1590
 Delta R.T. 0.000 min
 Lab File: VY009493.D
 Acq: 08 Jul 2022 19:20

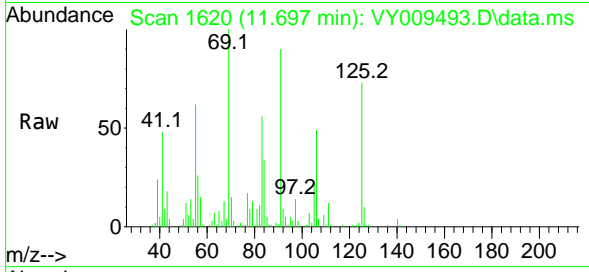
Tgt Ion	Resp	Lower	Upper
112	100		
114	31.6	25.8	38.6



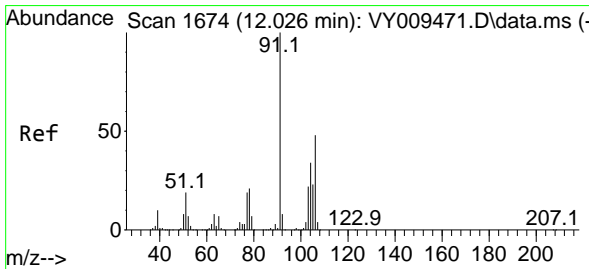
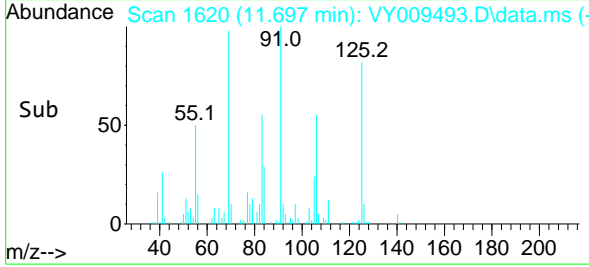
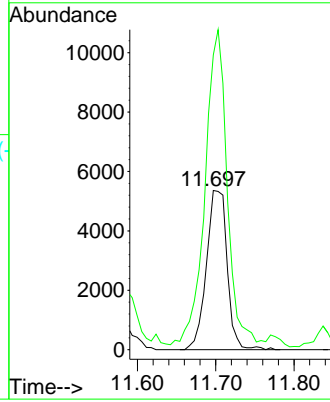


#68
 m/p-Xylenes
 Concen: 2.765 ug/l
 RT: 11.697 min Scan# 1620
 Delta R.T. -0.000 min
 Lab File: VY009493.D
 Acq: 08 Jul 2022 19:20

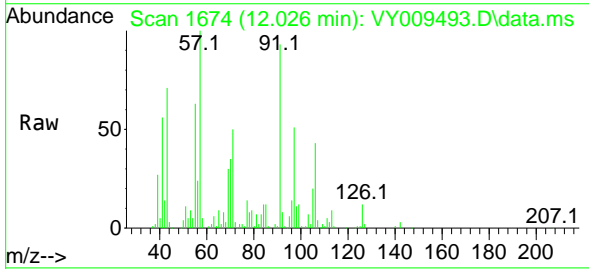
Instrument : MSVOA_Y
 ClientSampleId : 20220491A-9A



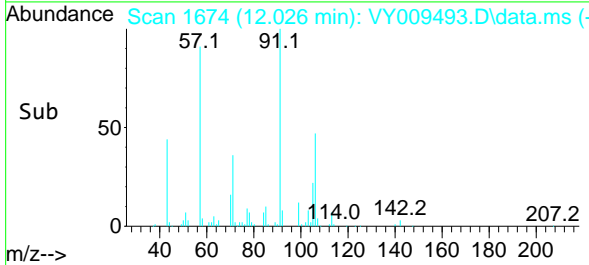
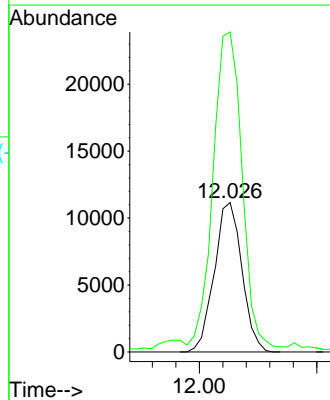
Tgt Ion:106 Resp: 9865
 Ion Ratio Lower Upper
 106 100
 91 216.3 166.6 249.8

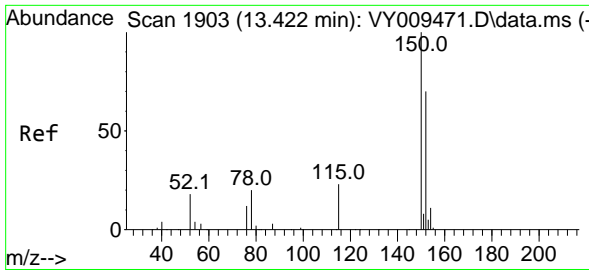


#69
 o-Xylene
 Concen: 5.326 ug/l
 RT: 12.026 min Scan# 1674
 Delta R.T. 0.000 min
 Lab File: VY009493.D
 Acq: 08 Jul 2022 19:20



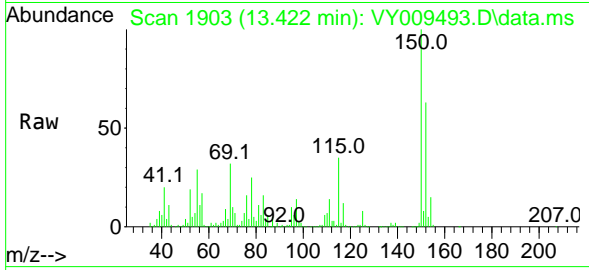
Tgt Ion:106 Resp: 18214
 Ion Ratio Lower Upper
 106 100
 91 219.4 110.3 331.0



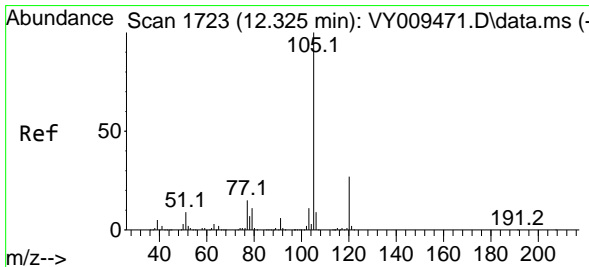
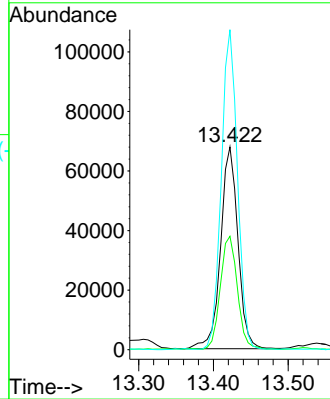
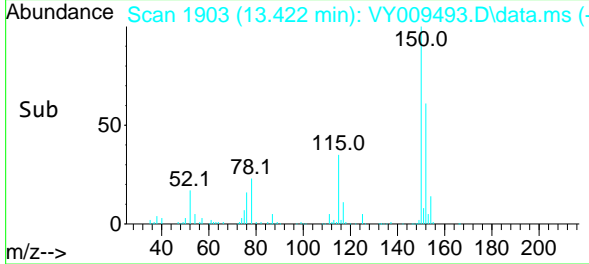


#72
 1,4-Dichlorobenzene-d4
 Concen: 50.000 ug/l
 RT: 13.422 min Scan# 1903
 Delta R.T. 0.000 min
 Lab File: VY009493.D
 Acq: 08 Jul 2022 19:20

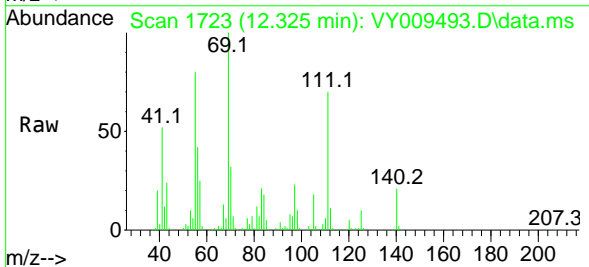
Instrument : MSVOA_Y
 ClientSampleId : 20220491A-9A



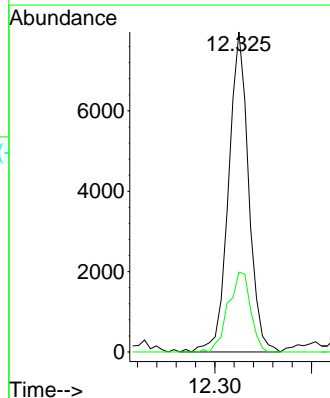
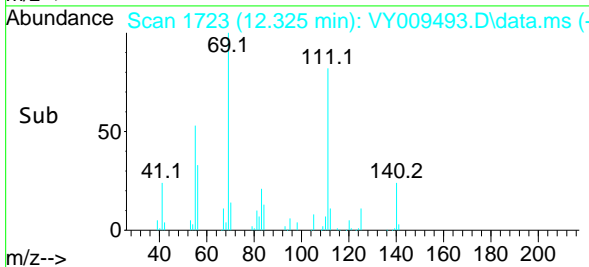
Tgt Ion:152 Resp: 109818
 Ion Ratio Lower Upper
 152 100
 115 55.0 28.2 84.7
 150 147.0 0.0 347.6

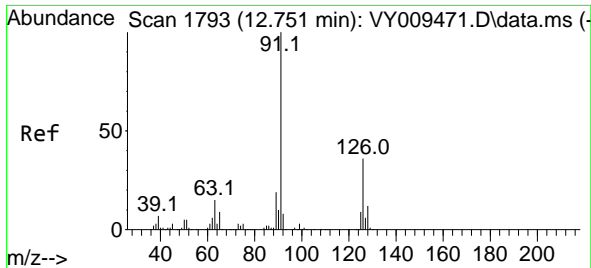


#73
 Isopropylbenzene
 Concen: 1.529 ug/l
 RT: 12.325 min Scan# 1723
 Delta R.T. -0.000 min
 Lab File: VY009493.D
 Acq: 08 Jul 2022 19:20



Tgt Ion:105 Resp: 11487
 Ion Ratio Lower Upper
 105 100
 120 27.8 13.4 40.2

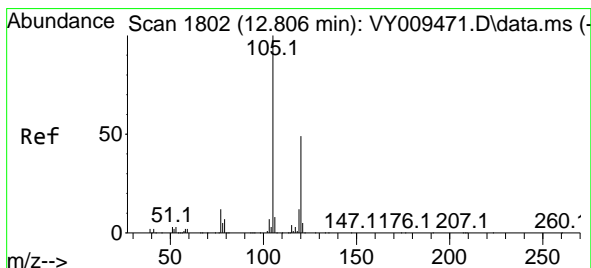
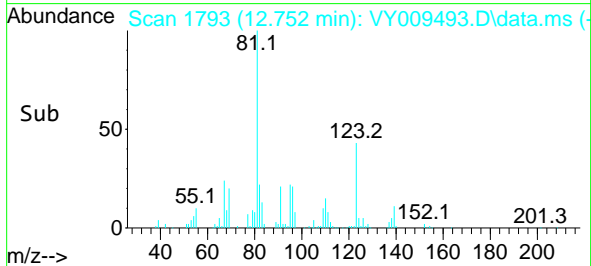
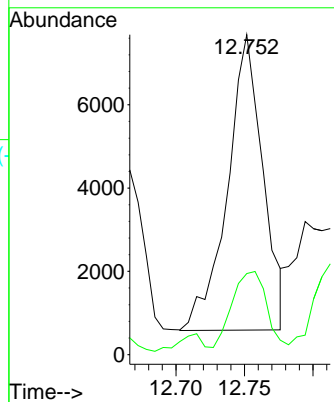
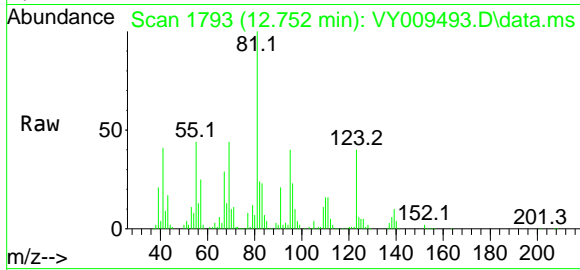




#79
 2-Chlorotoluene
 Concen: 2.523 ug/l
 RT: 12.752 min Scan# 11
 Delta R.T. 0.001 min
 Lab File: VY009493.D
 Acq: 08 Jul 2022 19:20

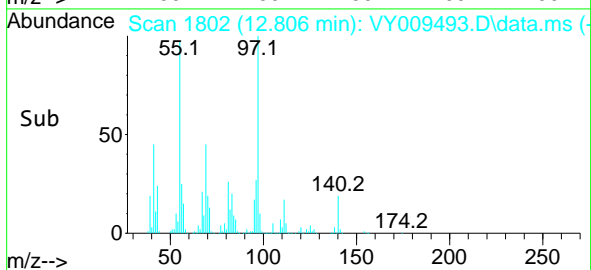
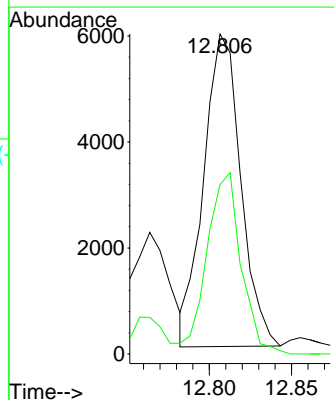
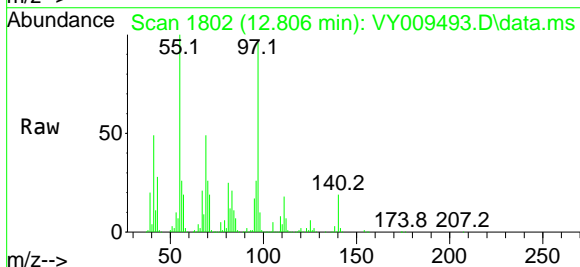
Instrument :
 MSVOA_Y
 ClientSampleId :
 20220491A-9A

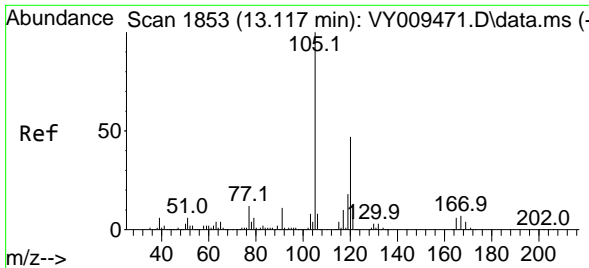
Tgt Ion: 91 Resp: 12814
 Ion Ratio Lower Upper
 91 100
 126 24.4 16.9 50.6



#80
 1,3,5-Trimethylbenzene
 Concen: 1.470 ug/l
 RT: 12.806 min Scan# 1802
 Delta R.T. 0.000 min
 Lab File: VY009493.D
 Acq: 08 Jul 2022 19:20

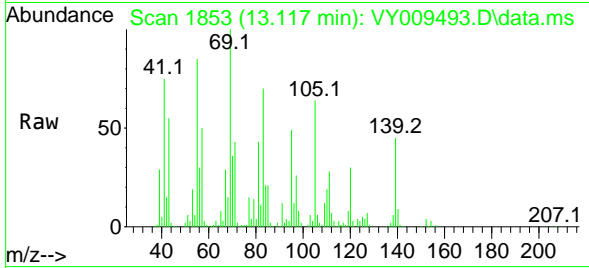
Tgt Ion: 105 Resp: 9230
 Ion Ratio Lower Upper
 105 100
 120 53.1 24.4 73.4



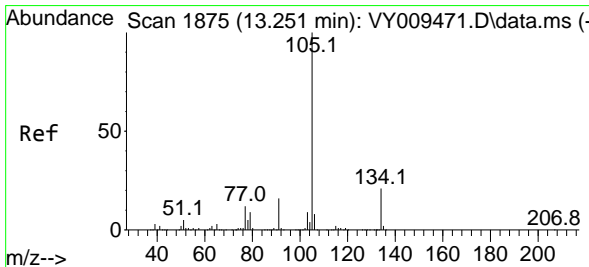
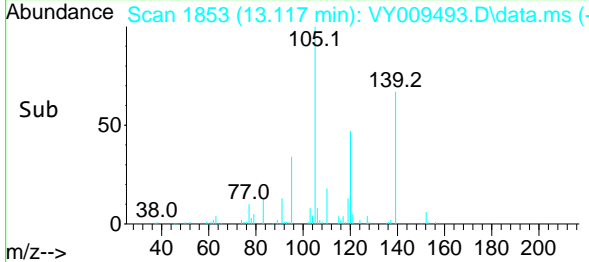
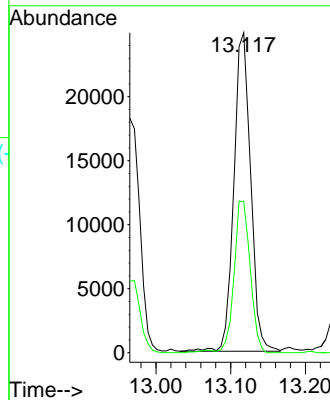


#84
 1,2,4-Trimethylbenzene
 Concen: 6.205 ug/l
 RT: 13.117 min Scan# 1853
 Delta R.T. 0.000 min
 Lab File: VY009493.D
 Acq: 08 Jul 2022 19:20

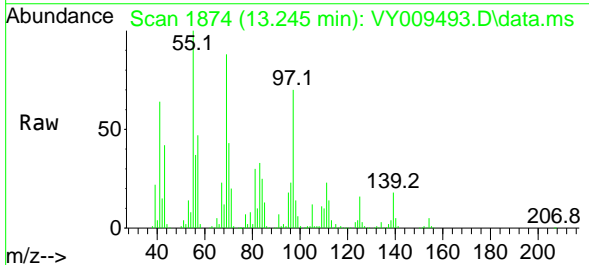
Instrument : MSVOA_Y
 ClientSampleId : 20220491A-9A



Tgt Ion:105 Resp: 38770
 Ion Ratio Lower Upper
 105 100
 120 45.6 22.3 66.9



#85
 sec-Butylbenzene
 Concen: 1.453 ug/l
 RT: 13.245 min Scan# 1874
 Delta R.T. -0.006 min
 Lab File: VY009493.D
 Acq: 08 Jul 2022 19:20



Tgt Ion:105 Resp: 11955
 Ion Ratio Lower Upper
 105 100
 134 32.5 10.2 30.4#

