

Data Path : Z:\voasrv\HPCHEM1\MSVOA\_Y\Data\VY071122\  
 Data File : VY009517.D  
 Acq On : 11 Jul 2022 17:49  
 Operator : KP/MD  
 Sample : N3643-01  
 Misc : 5.00g/5.0mL/MSVOA\_Y/SOIL  
 ALS Vial : 20 Sample Multiplier: 1

Instrument :  
 MSVOA\_Y  
 ClientSampleId :  
 TR-04-070822

Quant Time: Jul 12 05:04:35 2022  
 Quant Method : Z:\voasrv\HPCHEM1\MSVOA\_Y\methods\82Y070722S.M  
 Quant Title : SW846 8260  
 QLast Update : Fri Jul 08 11:00:56 2022  
 Response via : Initial Calibration

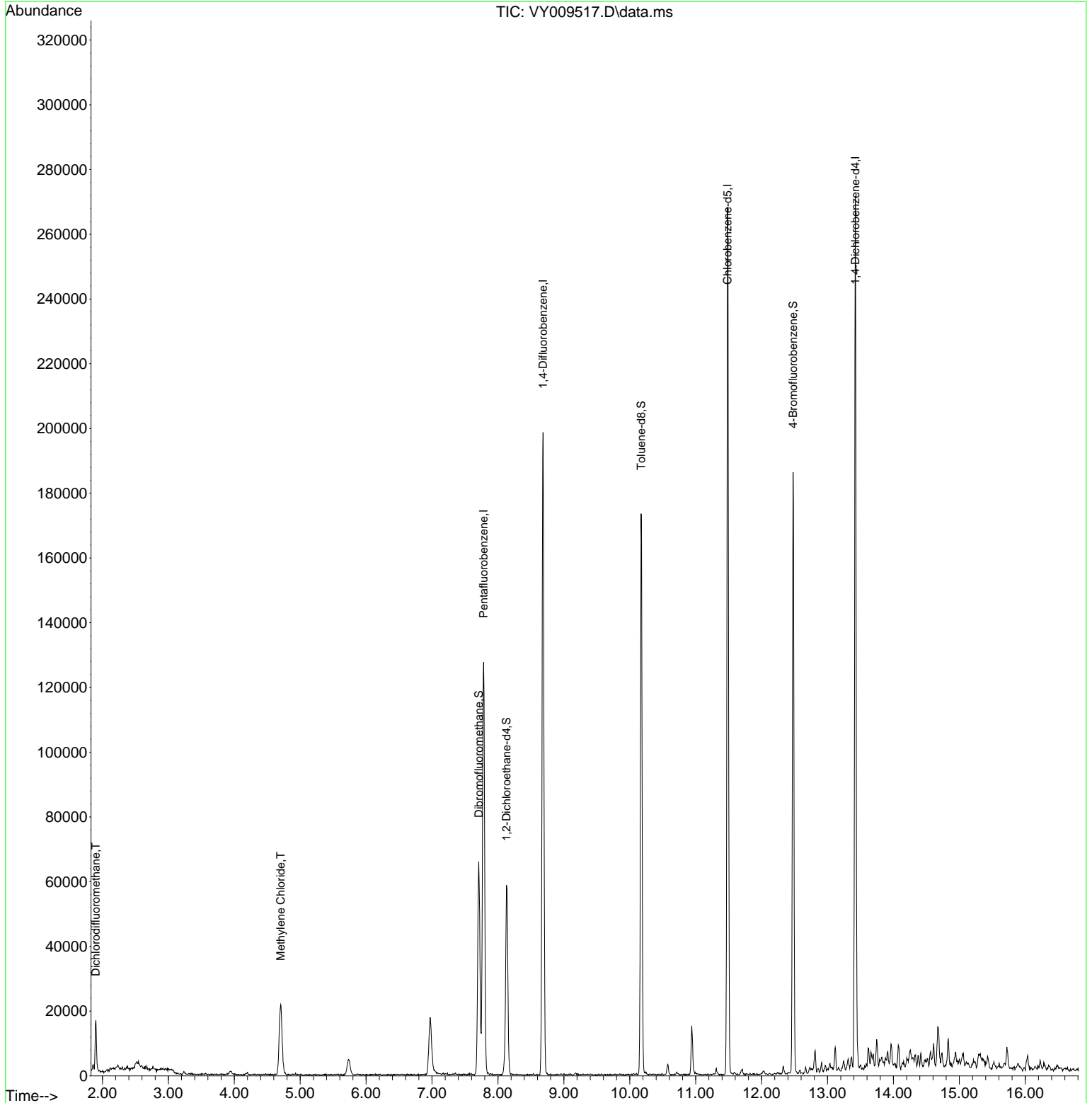
| Compound                    | R.T.   | QIon  | Response | Conc     | Units | Dev(Min) |
|-----------------------------|--------|-------|----------|----------|-------|----------|
| -----                       |        |       |          |          |       |          |
| Internal Standards          |        |       |          |          |       |          |
| 1) Pentafluorobenzene       | 7.783  | 168   | 103513   | 50.000   | ug/l  | 0.00     |
| 34) 1,4-Difluorobenzene     | 8.685  | 114   | 169972   | 50.000   | ug/l  | 0.00     |
| 63) Chlorobenzene-d5        | 11.483 | 117   | 145519   | 50.000   | ug/l  | 0.00     |
| 72) 1,4-Dichlorobenzene-d4  | 13.422 | 152   | 68261    | 50.000   | ug/l  | 0.00     |
| System Monitoring Compounds |        |       |          |          |       |          |
| 33) 1,2-Dichloroethane-d4   | 8.130  | 65    | 43252    | 60.704   | ug/l  | 0.00     |
| Spiked Amount               | 50.000 | Range | 50 - 163 | Recovery | =     | 121.400% |
| 35) Dibromofluoromethane    | 7.710  | 113   | 45188    | 50.527   | ug/l  | 0.00     |
| Spiked Amount               | 50.000 | Range | 54 - 147 | Recovery | =     | 101.060% |
| 50) Toluene-d8              | 10.173 | 98    | 110361   | 44.039   | ug/l  | 0.00     |
| Spiked Amount               | 50.000 | Range | 78 - 125 | Recovery | =     | 88.080%  |
| 62) 4-Bromofluorobenzene    | 12.477 | 95    | 54812    | 43.418   | ug/l  | 0.00     |
| Spiked Amount               | 50.000 | Range | 50 - 146 | Recovery | =     | 86.840%  |
| Target Compounds            |        |       |          |          |       |          |
|                             |        |       |          |          |       | Qvalue   |
| 2) Dichlorodifluoromethane  | 1.900  | 85    | 12597    | 15.869   | ug/l  | 93       |
| 20) Methylene Chloride      | 4.704  | 84    | 16230    | 9.814    | ug/l  | 90       |
| -----                       |        |       |          |          |       |          |

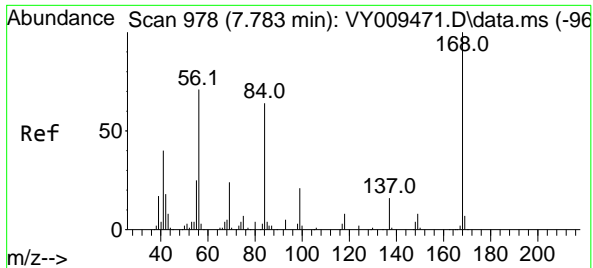
(#) = qualifier out of range (m) = manual integration (+) = signals summed

Data Path : Z:\voasrv\HPCHEM1\MSVOA\_Y\Data\VY071122\  
 Data File : VY009517.D  
 Acq On : 11 Jul 2022 17:49  
 Operator : KP/MD  
 Sample : N3643-01  
 Misc : 5.00g/5.0mL/MSVOA\_Y/SOIL  
 ALS Vial : 20 Sample Multiplier: 1

**Instrument :**  
 MSVOA\_Y  
**ClientSampleId :**  
 TR-04-070822

Quant Time: Jul 12 05:04:35 2022  
 Quant Method : Z:\voasrv\HPCHEM1\MSVOA\_Y\methods\82Y070722S.M  
 Quant Title : SW846 8260  
 QLast Update : Fri Jul 08 11:00:56 2022  
 Response via : Initial Calibration

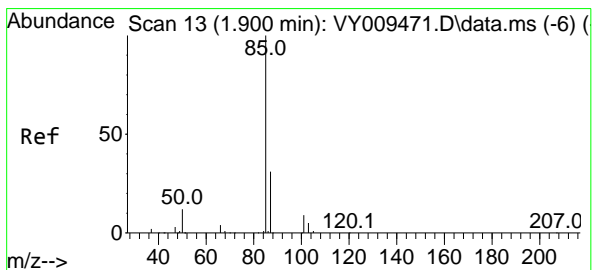
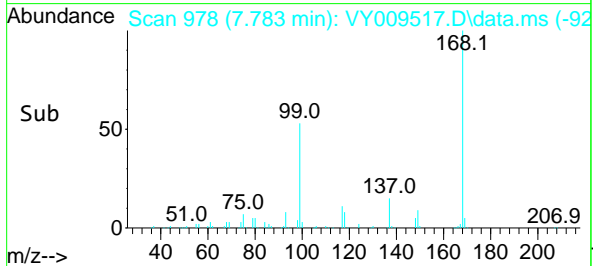
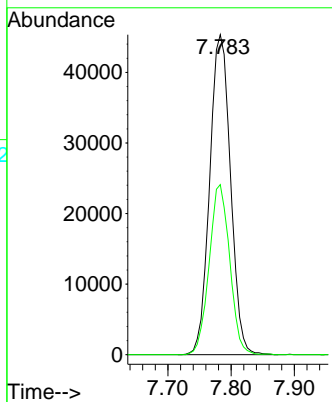
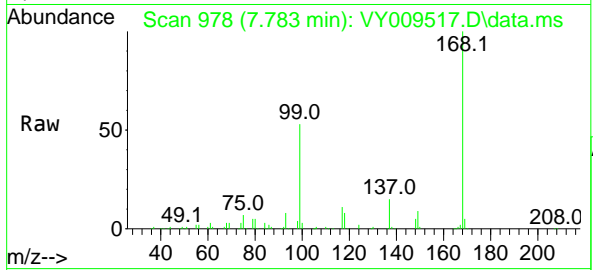




#1  
 Pentafluorobenzene  
 Concen: 50.000 ug/l  
 RT: 7.783 min Scan# 91  
 Delta R.T. -0.000 min  
 Lab File: VY009517.D  
 Acq: 11 Jul 2022 17:49

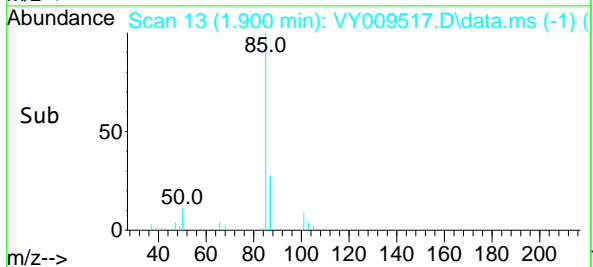
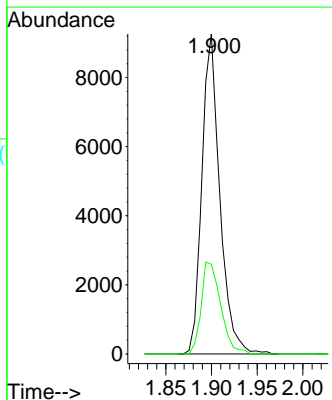
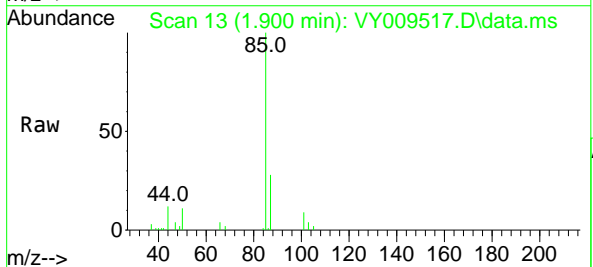
Instrument : MSVOA\_Y  
 ClientSampleId : TR-04-070822

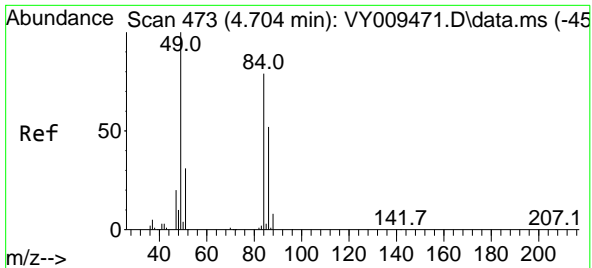
Tgt Ion:168 Resp: 103513  
 Ion Ratio Lower Upper  
 168 100  
 99 53.1 46.9 70.3



#2  
 Dichlorodifluoromethane  
 Concen: 15.869 ug/l  
 RT: 1.900 min Scan# 13  
 Delta R.T. -0.000 min  
 Lab File: VY009517.D  
 Acq: 11 Jul 2022 17:49

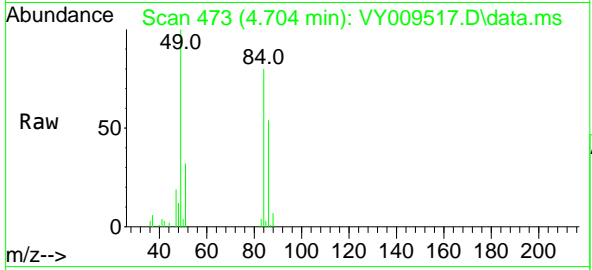
Tgt Ion: 85 Resp: 12597  
 Ion Ratio Lower Upper  
 85 100  
 87 28.1 16.1 48.2



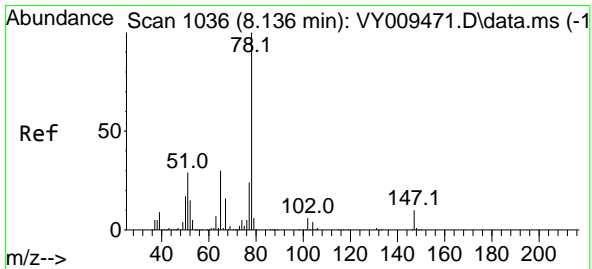
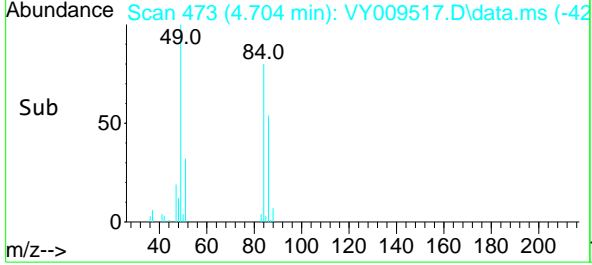
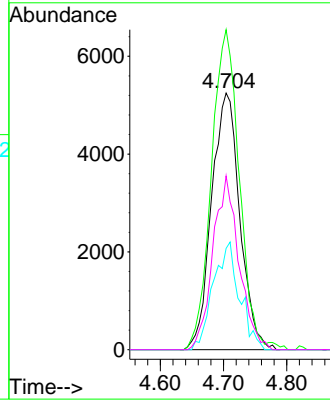


#20  
 Methylene Chloride  
 Concen: 9.814 ug/l  
 RT: 4.704 min Scan# 41  
 Delta R.T. 0.000 min  
 Lab File: VY009517.D  
 Acq: 11 Jul 2022 17:49

Instrument :  
 MSVOA\_Y  
 ClientSampleId :  
 TR-04-070822

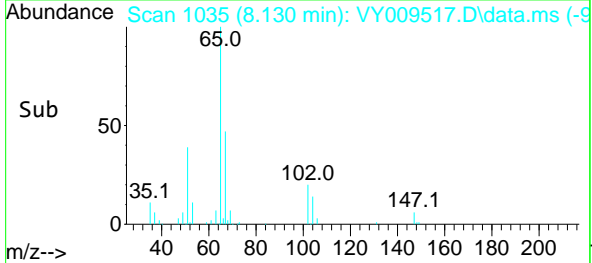
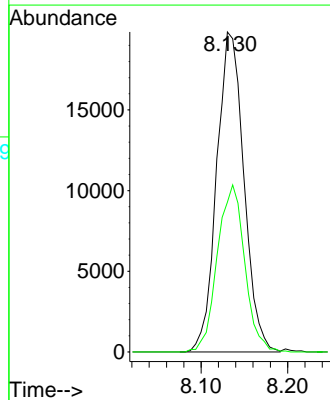
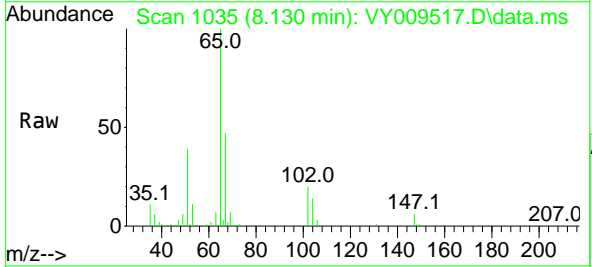


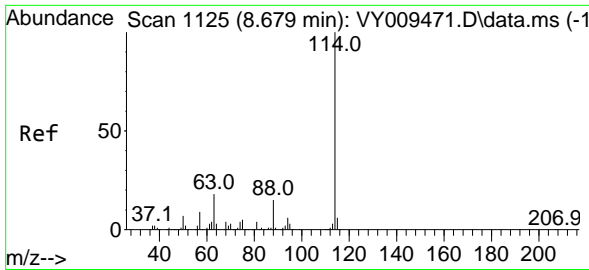
Tgt Ion: 84 Resp: 16230  
 Ion Ratio Lower Upper  
 84 100  
 49 124.7 114.4 171.6  
 51 39.5 35.3 52.9  
 86 67.7 53.7 80.5



#33  
 1,2-Dichloroethane-d4  
 Concen: 60.704 ug/l  
 RT: 8.130 min Scan# 1035  
 Delta R.T. -0.006 min  
 Lab File: VY009517.D  
 Acq: 11 Jul 2022 17:49

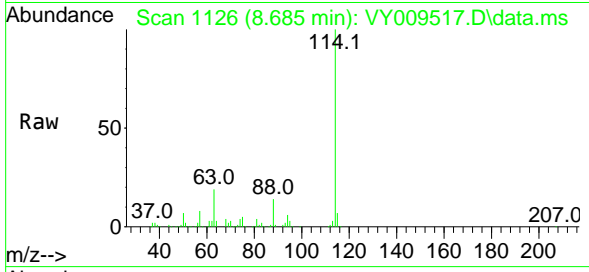
Tgt Ion: 65 Resp: 43252  
 Ion Ratio Lower Upper  
 65 100  
 67 52.6 0.0 99.4



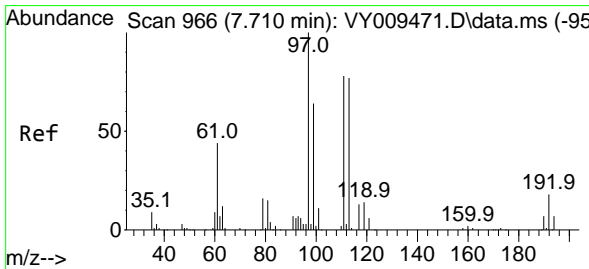
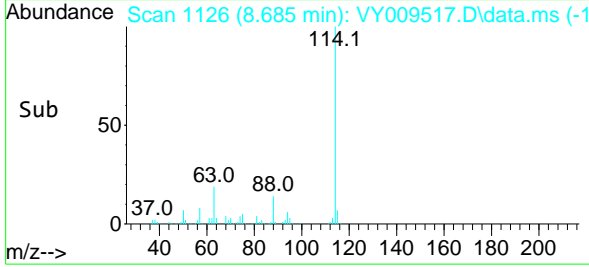
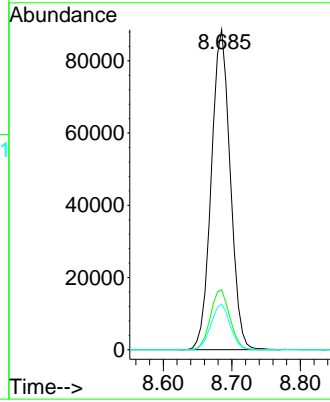


#34  
 1,4-Difluorobenzene  
 Concen: 50.000 ug/l  
 RT: 8.685 min Scan# 1126  
 Delta R.T. 0.006 min  
 Lab File: VY009517.D  
 Acq: 11 Jul 2022 17:49

Instrument : MSVOA\_Y  
 ClientSampleId : TR-04-070822

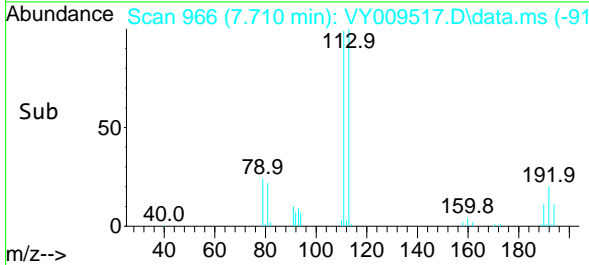
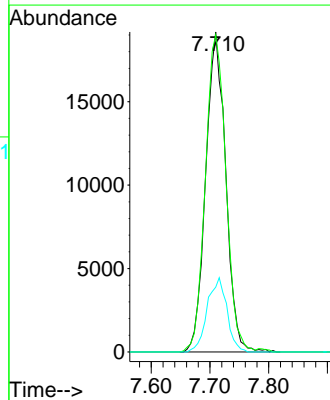
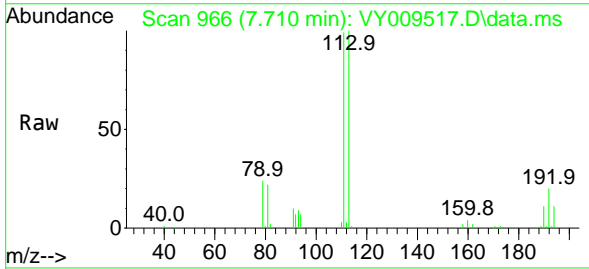


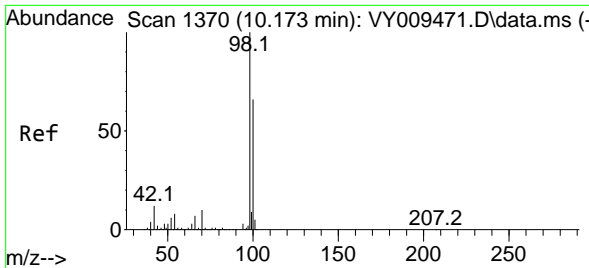
Tgt Ion:114 Resp: 169972  
 Ion Ratio Lower Upper  
 114 100  
 63 18.7 0.0 43.2  
 88 14.2 0.0 31.8



#35  
 Dibromofluoromethane  
 Concen: 50.527 ug/l  
 RT: 7.710 min Scan# 966  
 Delta R.T. -0.000 min  
 Lab File: VY009517.D  
 Acq: 11 Jul 2022 17:49

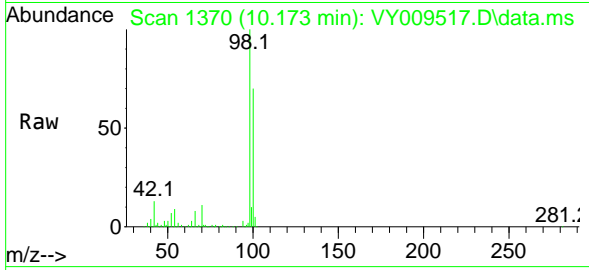
Tgt Ion:113 Resp: 45188  
 Ion Ratio Lower Upper  
 113 100  
 111 102.1 82.6 124.0  
 192 22.8 17.6 26.4



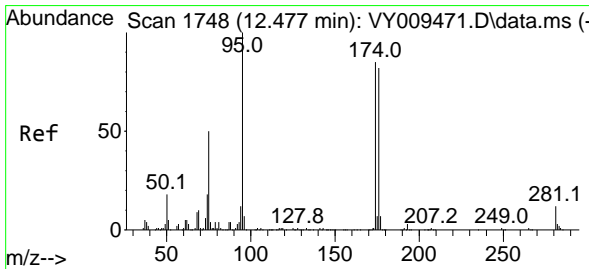
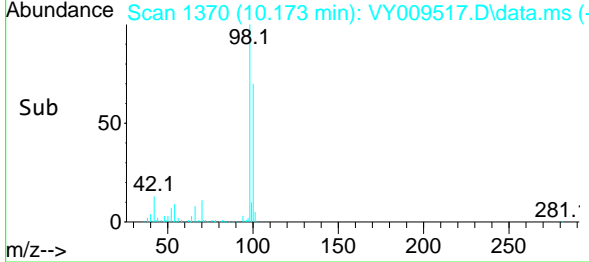
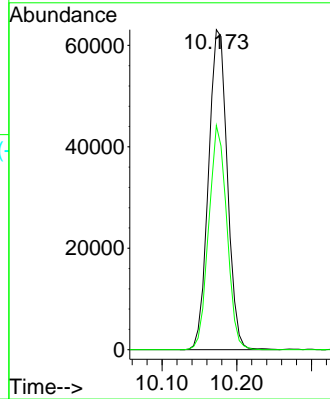


#50  
 Toluene-d8  
 Concen: 44.039 ug/l  
 RT: 10.173 min Scan# 11  
 Delta R.T. -0.000 min  
 Lab File: VY009517.D  
 Acq: 11 Jul 2022 17:49

Instrument :  
 MSVOA\_Y  
 ClientSampleId :  
 TR-04-070822

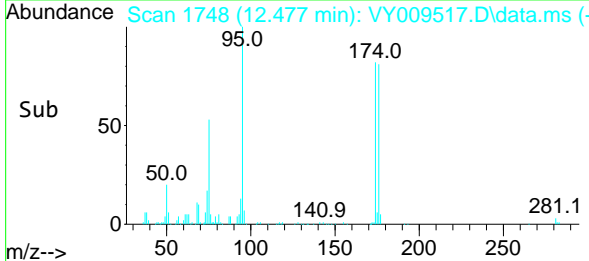
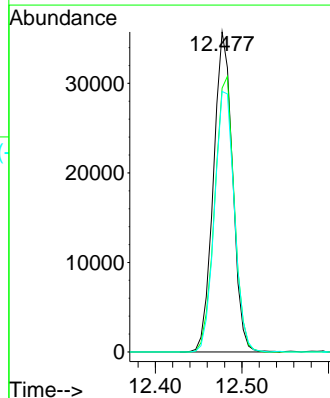
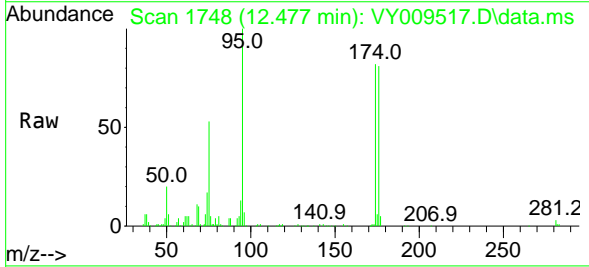


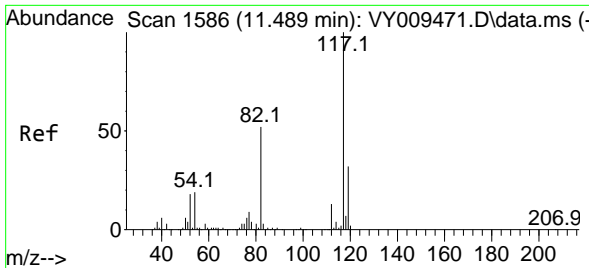
Tgt Ion: 98 Resp: 110361  
 Ion Ratio Lower Upper  
 98 100  
 100 67.2 50.2 75.2



#62  
 4-Bromofluorobenzene  
 Concen: 43.418 ug/l  
 RT: 12.477 min Scan# 1748  
 Delta R.T. 0.000 min  
 Lab File: VY009517.D  
 Acq: 11 Jul 2022 17:49

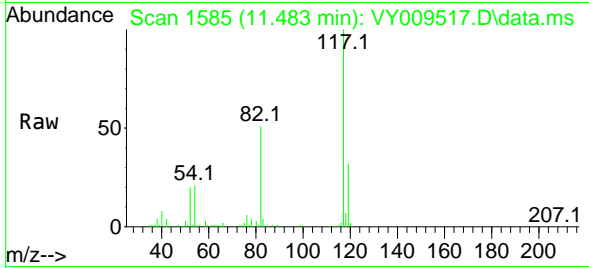
Tgt Ion: 95 Resp: 54812  
 Ion Ratio Lower Upper  
 95 100  
 174 87.7 0.0 177.0  
 176 84.6 0.0 175.8





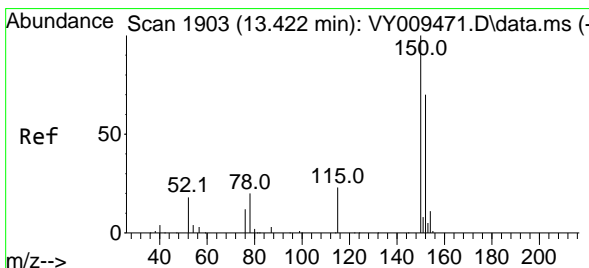
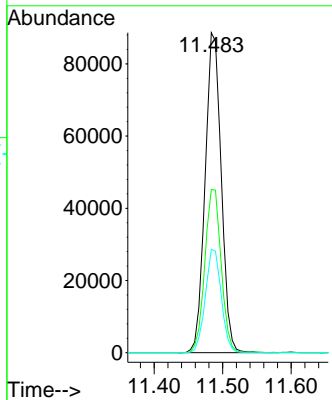
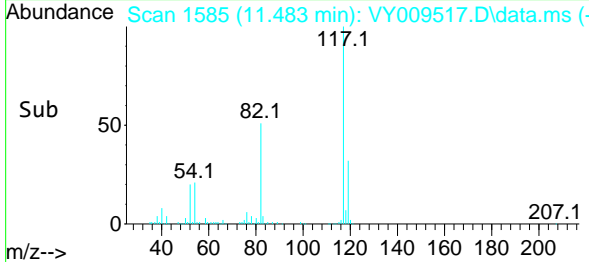
#63  
 Chlorobenzene-d5  
 Concen: 50.000 ug/l  
 RT: 11.483 min Scan# 11  
 Delta R.T. -0.006 min  
 Lab File: VY009517.D  
 Acq: 11 Jul 2022 17:49

Instrument : MSVOA\_Y  
 ClientSampleId : TR-04-070822

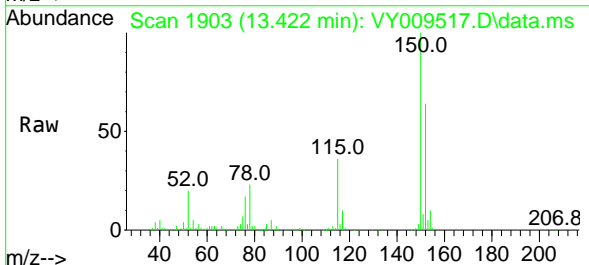


Tgt Ion:117 Resp: 145519

| Ion | Ratio | Lower | Upper |
|-----|-------|-------|-------|
| 117 | 100   |       |       |
| 82  | 51.0  | 43.0  | 64.4  |
| 119 | 32.3  | 25.4  | 38.0  |



#72  
 1,4-Dichlorobenzene-d4  
 Concen: 50.000 ug/l  
 RT: 13.422 min Scan# 1903  
 Delta R.T. 0.000 min  
 Lab File: VY009517.D  
 Acq: 11 Jul 2022 17:49



Tgt Ion:152 Resp: 68261

| Ion | Ratio | Lower | Upper |
|-----|-------|-------|-------|
| 152 | 100   |       |       |
| 115 | 55.2  | 28.2  | 84.7  |
| 150 | 153.4 | 0.0   | 347.6 |

