

Data Path : Z:\voasrv\HPCHEM1\MSVOA_Y\Data\VY071224\
 Data File : VY018800.D
 Acq On : 12 Jul 2024 16:16
 Operator : SY/MD
 Sample : P3211-01
 Misc : 5.07g/5.0mL/MSVOA_Y/SOIL/A
 ALS Vial : 17 Sample Multiplier: 1

Instrument :
 MSVOA_Y
 ClientSampleId :
 TR-04-07102024

Integration Parameters: RTEINT.P

Integrator: RTE
 Smoothing : ON
 Sampling : 1
 Start Thrs : 0.2
 Stop Thrs : 0

Filtering: 5
 Min Area: 3 % of largest Peak
 Max Peaks: 100
 Peak Location: TOP

If leading or trailing edge < 100 prefer < Baseline drop else tangent >
 Peak separation: 5

Method : Z:\voasrv\HPCHEM1\MSVOA_Y\methods\82Y070924S.M
 Title : SW846 8260

Signal : TIC: VY018800.D\data.ms

peak #	R.T. min	first scan	max scan	last scan	PK TY	peak height	corr. area	corr. % max.	% of total
1	1.863	6	7	13	rVB	728	844	3.20%	0.568%
2	1.912	13	15	16	rBV2	326	298	1.13%	0.201%
3	2.113	44	48	51	rBV2	1026	1657	6.28%	1.116%
4	2.522	113	115	117	rVB2	483	308	1.17%	0.207%
5	2.656	135	137	141	rBV2	574	448	1.70%	0.302%
6	2.875	168	173	176	rVB2	241	430	1.63%	0.290%
7	2.967	185	188	191	rBV2	357	298	1.13%	0.201%
8	3.588	288	290	292	rVB	335	307	1.16%	0.207%
9	3.759	315	318	321	rBV	198	347	1.32%	0.234%
10	4.009	356	359	362	rVB2	401	388	1.47%	0.261%
11	4.040	362	364	367	rBV2	359	348	1.32%	0.234%
12	4.375	416	419	421	rBV	226	305	1.16%	0.205%
13	4.667	464	467	468	rBV	303	326	1.24%	0.220%
14	4.686	468	470	471	rVV2	670	659	2.50%	0.444%
15	4.704	471	473	479	rVB3	720	1043	3.95%	0.702%
16	5.155	544	547	550	rBV2	271	465	1.76%	0.313%
17	5.472	597	599	602	rBV2	462	356	1.35%	0.240%
18	5.686	631	634	637	rBV2	316	368	1.39%	0.248%
19	5.728	637	641	642	rBV	263	295	1.12%	0.199%
20	6.545	773	775	777	rBV	326	296	1.12%	0.199%
21	6.746	806	808	814	rVB	258	353	1.34%	0.238%
22	6.966	837	844	848	rBV3	391	983	3.73%	0.662%
23	6.996	848	849	853	rBV2	225	294	1.11%	0.198%
24	7.143	870	873	876	rVB	240	302	1.14%	0.203%
25	7.240	886	889	893	rVB2	254	422	1.60%	0.284%
26	7.454	922	924	928	rVB	550	498	1.89%	0.335%
27	7.618	946	951	954	rVB2	231	379	1.44%	0.255%
28	7.710	958	966	971	rVV3	4636	10720	40.63%	7.219%
29	7.783	972	978	987	rVB2	8447	18055	68.43%	12.158%
30	8.142	1029	1037	1044	rBV2	2943	6938	26.30%	4.672%
31	8.429	1083	1084	1087	rBV2	300	298	1.13%	0.201%
32	8.685	1120	1126	1136	rBV	11090	20628	78.19%	13.891%
33	8.959	1166	1171	1173	rBV2	192	324	1.23%	0.218%
34	9.258	1218	1220	1225	rVB	321	329	1.25%	0.222%
35	9.453	1250	1252	1254	rBV2	272	328	1.24%	0.221%
36	9.923	1325	1329	1332	rBV	227	331	1.25%	0.223%

Data Path : Z:\voasrv\HPCHEM1\MSVOA_Y\Data\VY071224\
 Data File : VY018800.D
 Acq On : 12 Jul 2024 16:16
 Operator : SY/MD
 Sample : P3211-01
 Misc : 5.07g/5.0mL/MSVOA_Y/SOIL/A
 ALS Vial : 17 Sample Multiplier: 1

Instrument :
 MSVOA_Y
 ClientSampleId :
 TR-04-07102024

Integration Parameters: RTEINT.P

Integrator: RTE
 Smoothing : ON
 Sampling : 1
 Start Thrs: 0.2
 Stop Thrs : 0

Filtering: 5
 Min Area: 3 % of largest Peak
 Max Peaks: 100
 Peak Location: TOP

If leading or trailing edge < 100 prefer < Baseline drop else tangent >
 Peak separation: 5

Method : Z:\voasrv\HPCHEM1\MSVOA_Y\methods\82Y070924S.M
 Title : SW846 8260

37	10.179	1364	1371	1380	rVB2	15242	26383	100.00%	17.766%
38	10.355	1398	1400	1403	rVB	402	339	1.28%	0.228%
39	10.636	1444	1446	1449	rVB3	269	307	1.16%	0.207%
40	10.990	1501	1504	1508	rBV2	320	450	1.71%	0.303%
41	11.441	1575	1578	1580	rBV	381	325	1.23%	0.219%
42	11.489	1580	1586	1595	rVB3	11144	19001	72.02%	12.795%
43	11.709	1620	1622	1626	rVB2	291	294	1.11%	0.198%
44	11.831	1641	1642	1647	rVB2	212	319	1.21%	0.215%
45	11.880	1647	1650	1653	rBV2	340	444	1.68%	0.299%
46	12.380	1730	1732	1735	rBV2	255	369	1.40%	0.248%
47	12.483	1742	1749	1756	rVB3	6276	10047	38.08%	6.766%
48	13.026	1836	1838	1841	rVB2	389	354	1.34%	0.238%
49	13.428	1898	1904	1910	rVB3	4751	7643	28.97%	5.147%
50	13.489	1913	1914	1917	rBV2	347	320	1.21%	0.215%
51	13.605	1928	1933	1936	rBV	369	755	2.86%	0.508%
52	13.660	1939	1942	1944	rVB	289	394	1.49%	0.265%
53	13.940	1983	1988	1989	rBV	428	541	2.05%	0.364%
54	14.379	2059	2060	2064	rBV2	247	297	1.13%	0.200%
55	14.605	2096	2097	2100	rBV	262	317	1.20%	0.213%
56	14.849	2134	2137	2138	rBV2	359	317	1.20%	0.213%
57	14.903	2144	2146	2149	rBV2	482	537	2.04%	0.362%
58	14.940	2149	2152	2153	rVB2	363	312	1.18%	0.210%
59	14.983	2156	2159	2162	rBV2	206	311	1.18%	0.209%
60	15.056	2169	2171	2174	rVB2	313	341	1.29%	0.230%
61	15.178	2188	2191	2194	rVB3	326	391	1.48%	0.263%
62	15.513	2241	2246	2247	rBV2	496	802	3.04%	0.540%
63	15.635	2262	2266	2267	rBV3	316	346	1.31%	0.233%
64	15.714	2277	2279	2281	rVB	413	298	1.13%	0.201%
65	15.763	2284	2287	2288	rVB3	459	394	1.49%	0.265%
66	15.787	2288	2291	2293	rBV2	336	440	1.67%	0.296%
67	15.873	2304	2305	2308	rBV3	440	396	1.50%	0.267%
68	15.928	2311	2314	2318	rBV	336	593	2.25%	0.399%
69	15.970	2318	2321	2323	rVV2	379	416	1.58%	0.280%
70	16.013	2326	2328	2331	rVV2	556	520	1.97%	0.350%
71	16.068	2335	2337	2340	rVB2	474	397	1.50%	0.267%
72	16.111	2340	2344	2345	rBV3	312	418	1.58%	0.281%
73	16.263	2368	2369	2373	rBV3	396	430	1.63%	0.290%
74	16.635	2428	2430	2433	rVB3	346	415	1.57%	0.279%
75	16.726	2441	2445	2446	rBV	424	562	2.13%	0.378%

Data Path : Z:\voasrv\HPCHEM1\MSVOA_Y\Data\VY071224\
Data File : VY018800.D
Acq On : 12 Jul 2024 16:16
Operator : SY/MD
Sample : P3211-01
Misc : 5.07g/5.0mL/MSVOA_Y/SOIL/A
ALS Vial : 17 Sample Multiplier: 1

Instrument :
MSVOA_Y
ClientSampleId :
TR-04-07102024

Integration Parameters: RTEINT.P

Integrator: RTE

Smoothing : ON

Filtering: 5

Sampling : 1

Min Area: 3 % of largest Peak

Start Thrs: 0.2

Max Peaks: 100

Stop Thrs : 0

Peak Location: TOP

If leading or trailing edge < 100 prefer < Baseline drop else tangent >

Peak separation: 5

Method : Z:\voasrv\HPCHEM1\MSVOA_Y\methods\82Y070924S.M

Title : SW846 8260

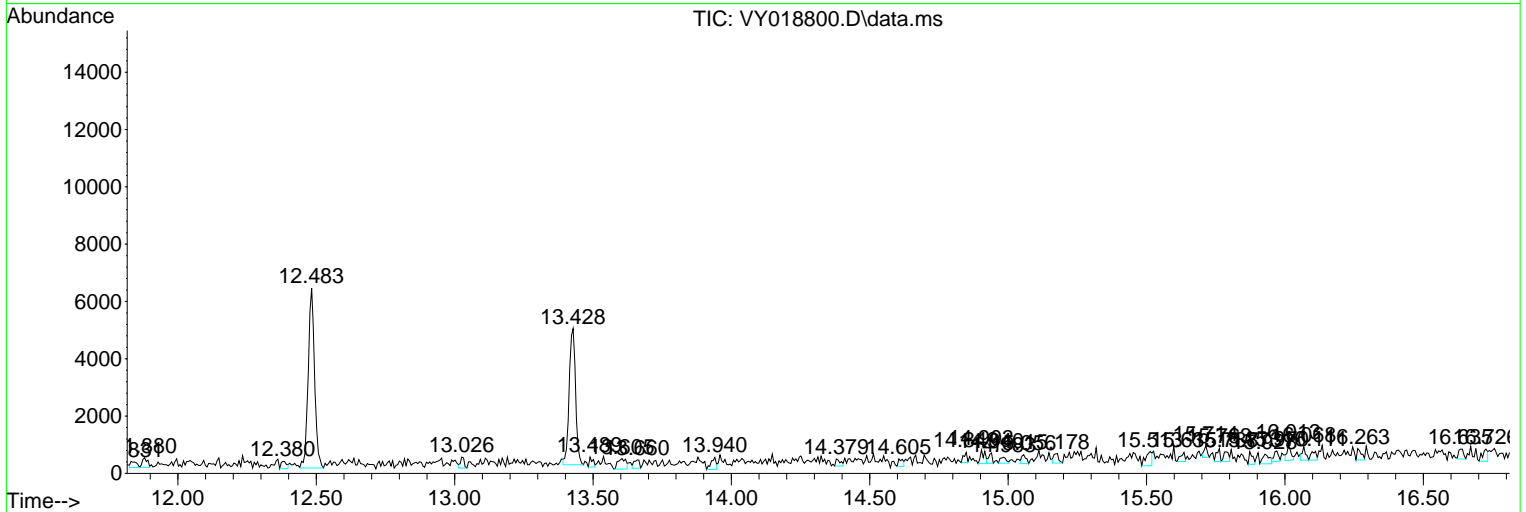
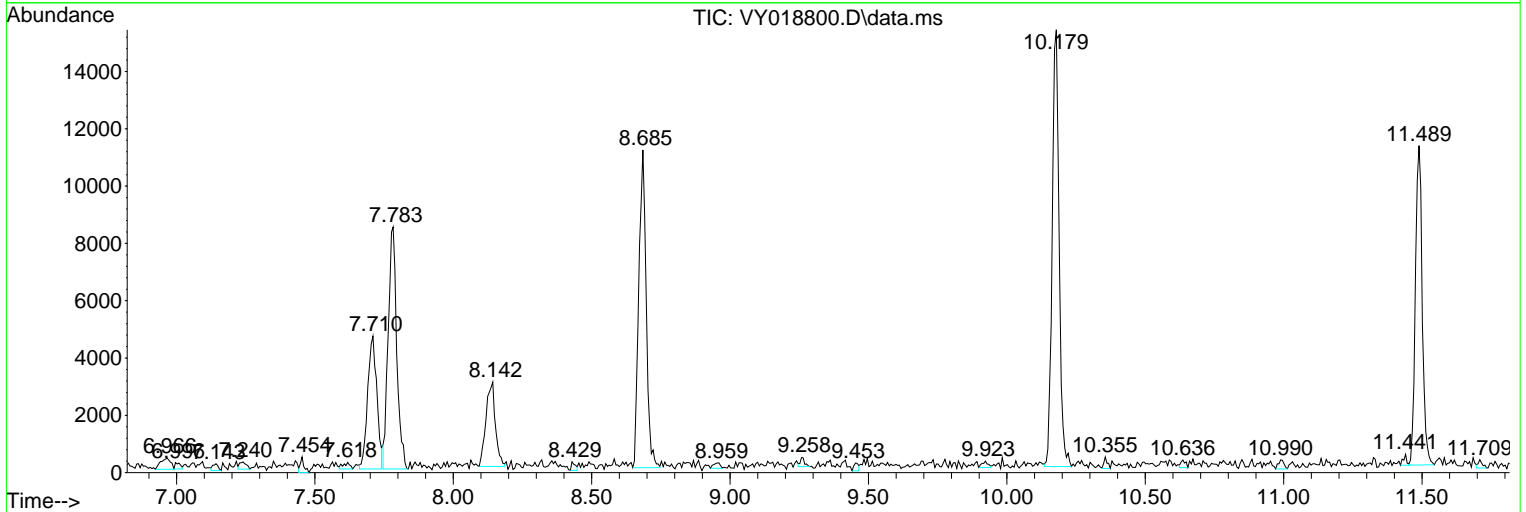
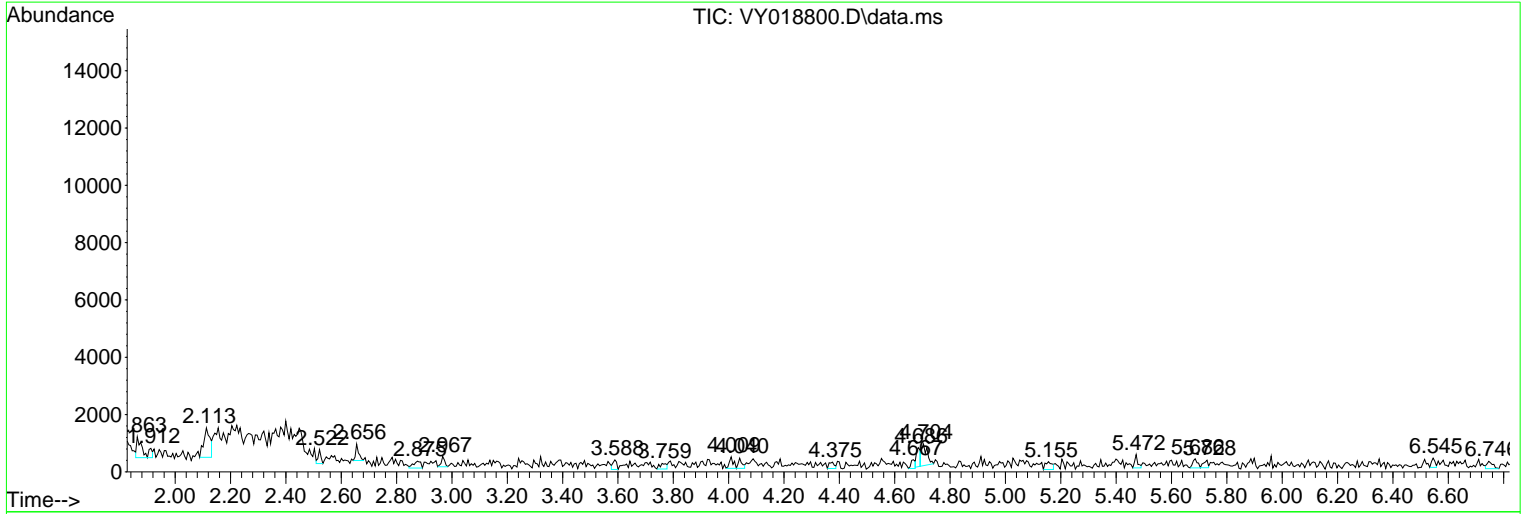
Sum of corrected areas: 148503

Data Path : Z:\voasrv\HPCHEM1\MSVOA_Y\Data\VY071224\
 Data File : VY018800.D
 Acq On : 12 Jul 2024 16:16
 Operator : SY/MD
 Sample : P3211-01
 Misc : 5.07g/5.0mL/MSVOA_Y/SOIL/A
 ALS Vial : 17 Sample Multiplier: 1

Instrument :
 MSVOA_Y
 ClientSampleId :
 TR-04-07102024

Quant Method : Z:\voasrv\HPCHEM1\MSVOA_Y\methods\82Y070924S.M
 Quant Title : SW846 8260

TIC Library : C:\Database\NIST20.L
 TIC Integration Parameters: LSCINT.P



Library Search Compound Report

Data Path : Z:\voasrv\HPCHEM1\MSVOA_Y\Data\VY071224\
Data File : VY018800.D
Acq On : 12 Jul 2024 16:16
Operator : SY/MD
Sample : P3211-01
Misc : 5.07g/5.0mL/MSVOA_Y/SOIL/A
ALS Vial : 17 Sample Multiplier: 1

Instrument :
MSVOA_Y
ClientSampleId :
TR-04-07102024

Quant Method : Z:\voasrv\HPCHEM1\MSVOA_Y\methods\82Y070924S.M
Quant Title : SW846 8260

TIC Library : C:\Database\NIST20.L
TIC Integration Parameters: LSCINT.P

No Library Search Compounds Detected

Data Path : Z:\voasrv\HPCHEM1\MSVOA_Y\Data\VY071224\
Data File : VY018800.D
Acq On : 12 Jul 2024 16:16
Operator : SY/MD
Sample : P3211-01
Misc : 5.07g/5.0mL/MSVOA_Y/SOIL/A
ALS Vial : 17 Sample Multiplier: 1

Instrument :
MSVOA_Y
ClientSampleId :
TR-04-07102024

Quant Method : Z:\voasrv\HPCHEM1\MSVOA_Y\methods\82Y070924S.M
Quant Title : SW846 8260

TIC Library : C:\Database\NIST20.L
TIC Integration Parameters: LSCINT.P

TIC Top Hit name	RT	EstConc	Units	Response	--Internal Standard--		
					#	RT	Resp Conc
