

Data Path : Z:\voasrv\HPCHEM1\MSVOA_Y\Data\VY072424\
 Data File : VY018903.D
 Acq On : 24 Jul 2024 11:49
 Operator : SY/MD
 Sample : VY0724SBL01
 Misc : 5.00g/5.0mL/MSVOA_Y/SOIL
 ALS Vial : 4 Sample Multiplier: 1

Instrument :
 MSVOA_Y
 ClientSampleId :
 VY0724SBL01

Quant Time: Jul 25 01:26:01 2024
 Quant Method : Z:\voasrv\HPCHEM1\MSVOA_Y\methods\82Y070924S.M
 Quant Title : SW846 8260
 QLast Update : Tue Jul 09 14:28:51 2024
 Response via : Initial Calibration

Compound	R.T.	QIon	Response	Conc	Units	Dev(Min)

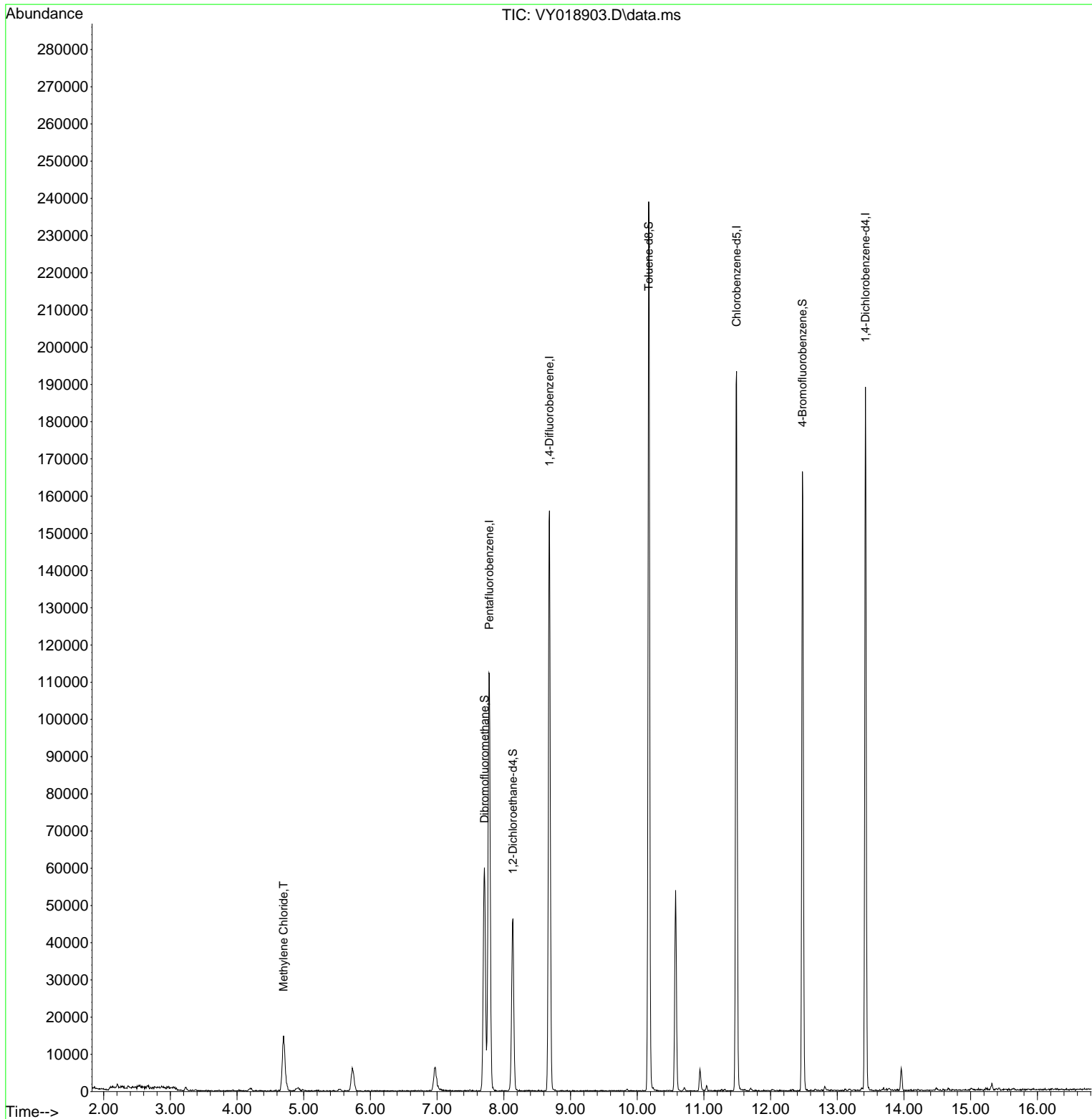
Internal Standards						
1) Pentafluorobenzene	7.783	168	91910	50.000	ug/l	0.00
34) 1,4-Difluorobenzene	8.685	114	137655	50.000	ug/l	0.00
63) Chlorobenzene-d5	11.490	117	110914	50.000	ug/l	0.00
72) 1,4-Dichlorobenzene-d4	13.422	152	48335	50.000	ug/l	0.00
System Monitoring Compounds						
33) 1,2-Dichloroethane-d4	8.136	65	35705	39.479	ug/l	0.00
Spiked Amount	50.000	Range	50 - 163	Recovery	=	78.960%
35) Dibromofluoromethane	7.710	113	41228	47.819	ug/l	0.00
Spiked Amount	50.000	Range	54 - 147	Recovery	=	95.640%
50) Toluene-d8	10.173	98	153186	46.898	ug/l	0.00
Spiked Amount	50.000	Range	58 - 134	Recovery	=	93.800%
62) 4-Bromofluorobenzene	12.477	95	46376	41.575	ug/l	0.00
Spiked Amount	50.000	Range	30 - 143	Recovery	=	83.140%
Target Compounds						
20) Methylene Chloride	4.698	84	10714	7.086	ug/l	89

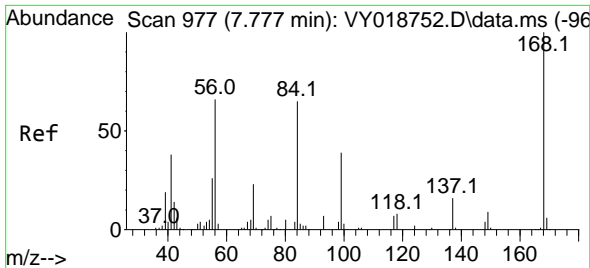
(#) = qualifier out of range (m) = manual integration (+) = signals summed

Data Path : Z:\voasrv\HPCHEM1\MSVOA_Y\Data\VY072424\
 Data File : VY018903.D
 Acq On : 24 Jul 2024 11:49
 Operator : SY/MD
 Sample : VY0724SBL01
 Misc : 5.00g/5.0mL/MSVOA_Y/SOIL
 ALS Vial : 4 Sample Multiplier: 1

Instrument :
 MSVOA_Y
 ClientSampleId :
 VY0724SBL01

Quant Time: Jul 25 01:26:01 2024
 Quant Method : Z:\voasrv\HPCHEM1\MSVOA_Y\methods\82Y070924S.M
 Quant Title : SW846 8260
 QLast Update : Tue Jul 09 14:28:51 2024
 Response via : Initial Calibration

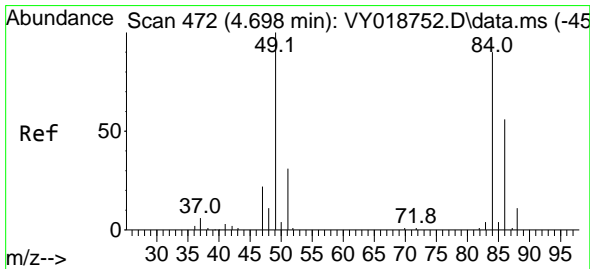
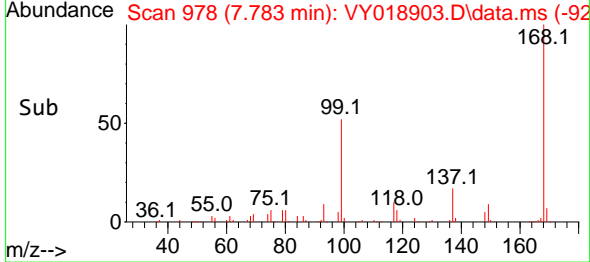
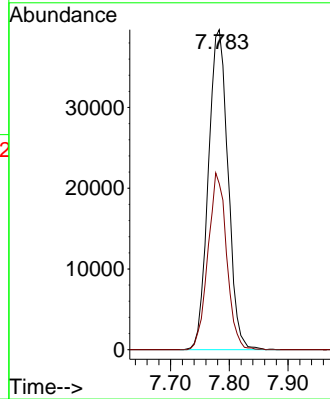
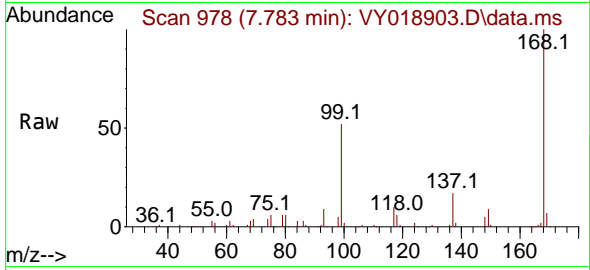




#1
 Pentafluorobenzene
 Concen: 50.000 ug/l
 RT: 7.783 min Scan# 91
 Delta R.T. 0.006 min
 Lab File: VY018903.D
 Acq: 24 Jul 2024 11:49

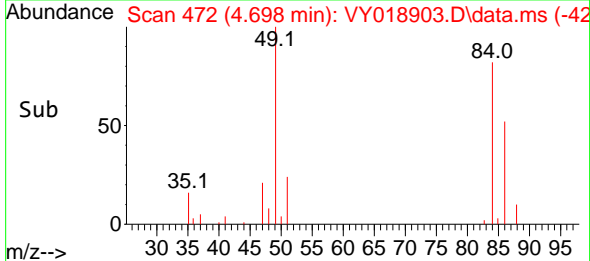
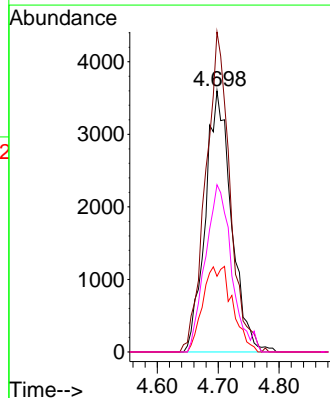
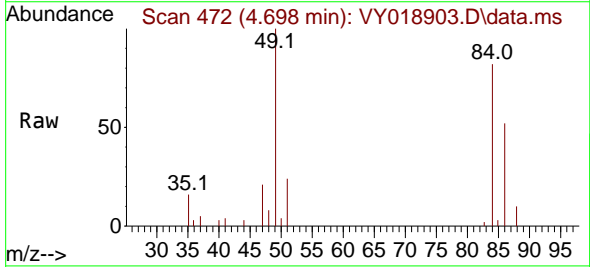
Instrument :
 MSVOA_Y
 ClientSampleId :
 VY0724SBL01

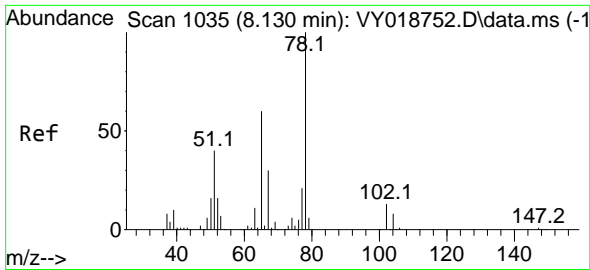
Tgt Ion:168 Resp: 91910
 Ion Ratio Lower Upper
 168 100
 99 51.9 39.1 58.7



#20
 Methylene Chloride
 Concen: 7.086 ug/l
 RT: 4.698 min Scan# 472
 Delta R.T. 0.000 min
 Lab File: VY018903.D
 Acq: 24 Jul 2024 11:49

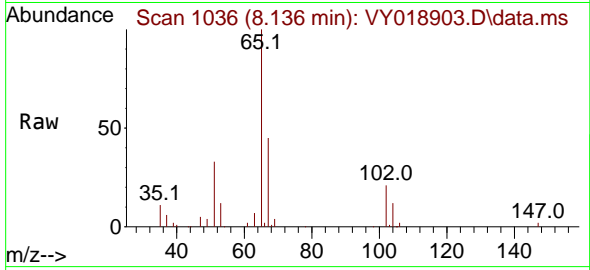
Tgt Ion: 84 Resp: 10714
 Ion Ratio Lower Upper
 84 100
 49 122.5 84.4 126.6
 51 29.0 26.0 39.0
 86 64.1 49.5 74.3



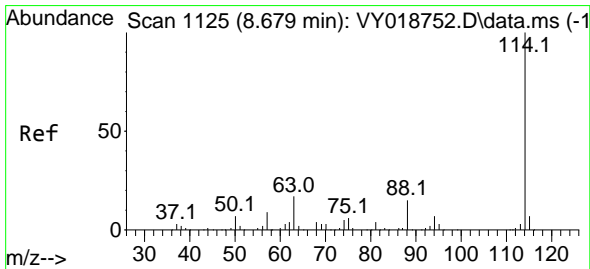
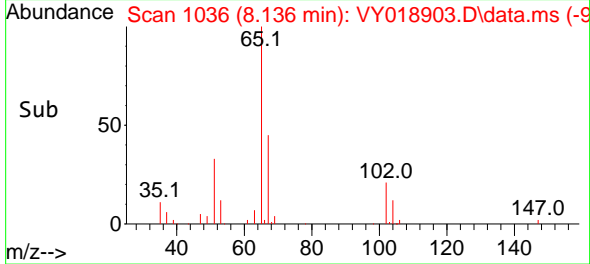
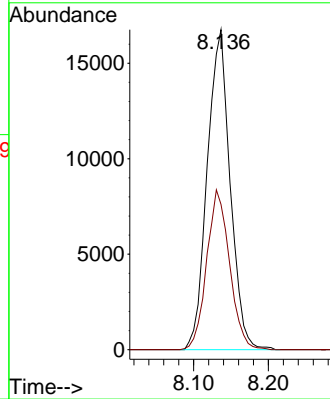


#33
 1,2-Dichloroethane-d4
 Concen: 39.479 ug/l
 RT: 8.136 min Scan# 1036
 Delta R.T. 0.006 min
 Lab File: VY018903.D
 Acq: 24 Jul 2024 11:49

Instrument : MSVOA_Y
 ClientSampleId : VY0724SBL01

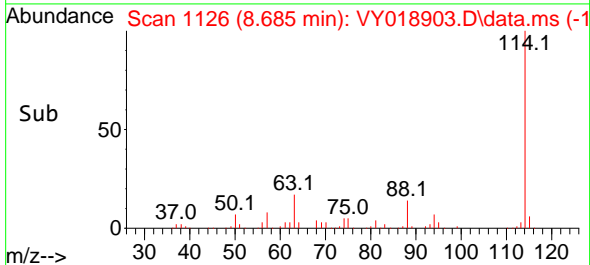
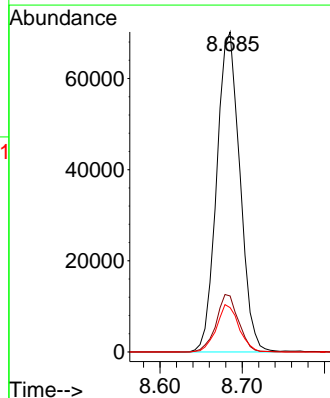
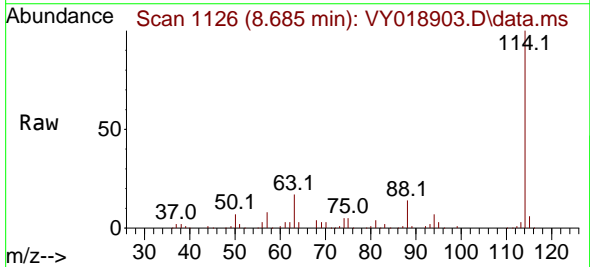


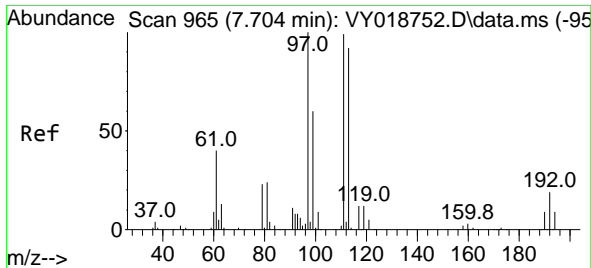
Tgt Ion: 65 Resp: 35705
 Ion Ratio Lower Upper
 65 100
 67 49.9 0.0 109.6



#34
 1,4-Difluorobenzene
 Concen: 50.000 ug/l
 RT: 8.685 min Scan# 1126
 Delta R.T. 0.006 min
 Lab File: VY018903.D
 Acq: 24 Jul 2024 11:49

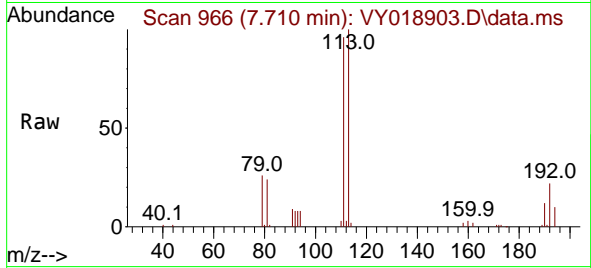
Tgt Ion: 114 Resp: 137655
 Ion Ratio Lower Upper
 114 100
 63 17.5 0.0 35.0
 88 13.8 0.0 27.2



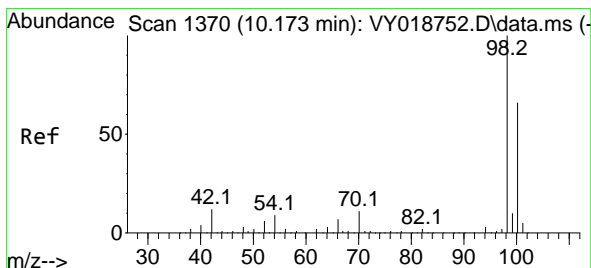
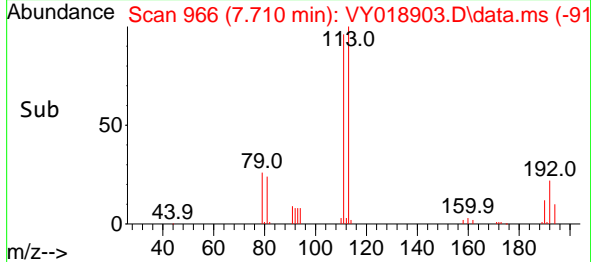
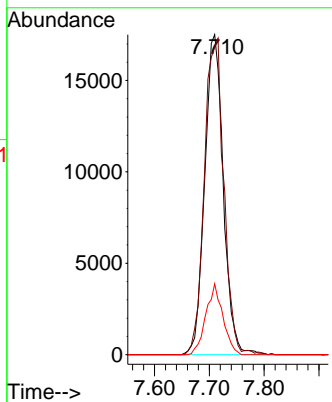


#35
 Dibromofluoromethane
 Concen: 47.819 ug/l
 RT: 7.710 min Scan# 90
 Delta R.T. 0.006 min
 Lab File: VY018903.D
 Acq: 24 Jul 2024 11:49

Instrument :
 MSVOA_Y
 ClientSampleId :
 VY0724SBL01

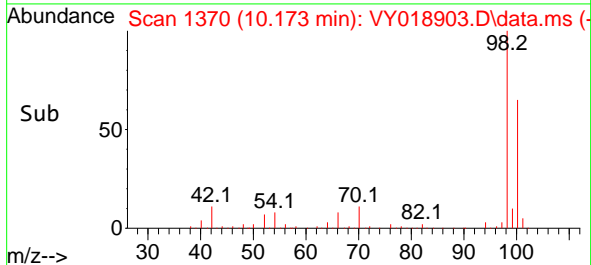
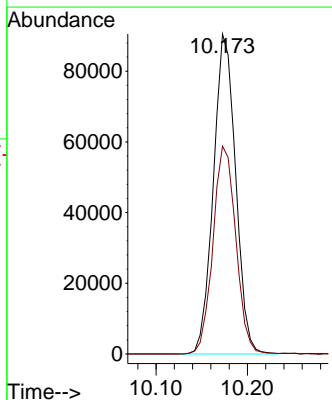
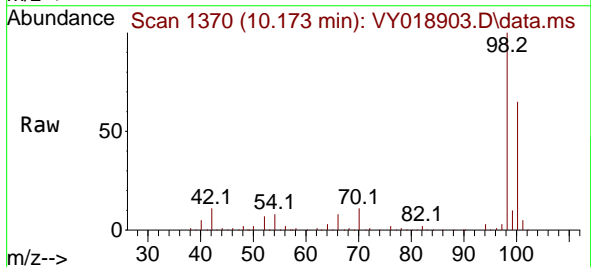


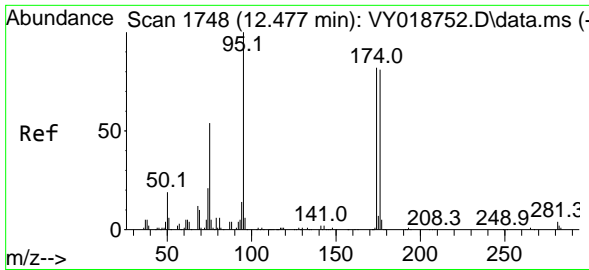
Tgt Ion:113 Resp: 41228
 Ion Ratio Lower Upper
 113 100
 111 103.4 82.2 123.4
 192 20.2 15.9 23.9



#50
 Toluene-d8
 Concen: 46.898 ug/l
 RT: 10.173 min Scan# 1370
 Delta R.T. 0.000 min
 Lab File: VY018903.D
 Acq: 24 Jul 2024 11:49

Tgt Ion: 98 Resp: 153186
 Ion Ratio Lower Upper
 98 100
 100 66.8 52.0 78.0

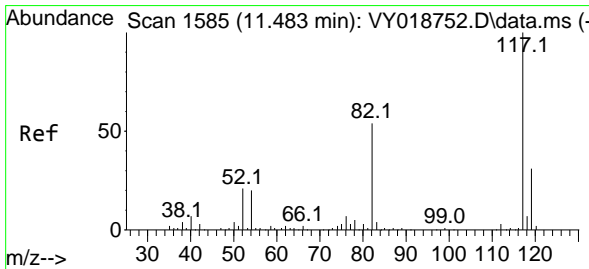
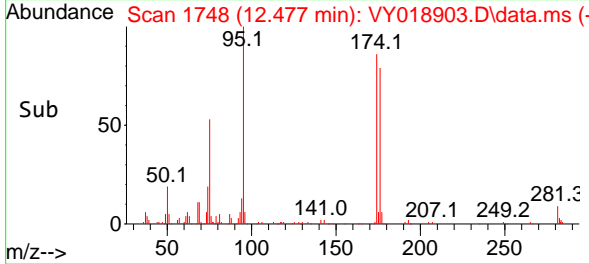
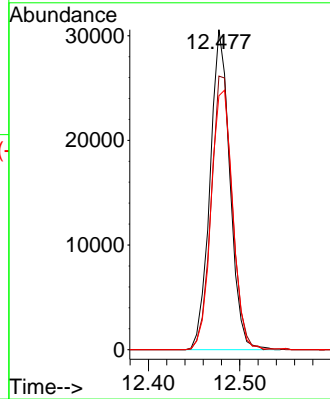
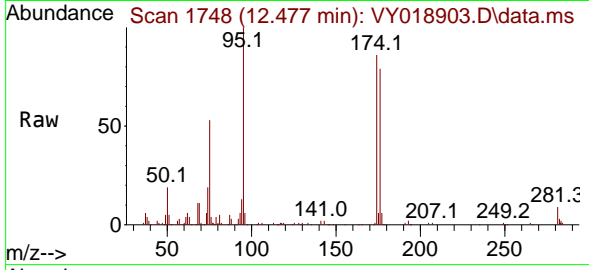




#62
 4-Bromofluorobenzene
 Concen: 41.575 ug/l
 RT: 12.477 min Scan# 1748
 Delta R.T. 0.000 min
 Lab File: VY018903.D
 Acq: 24 Jul 2024 11:49

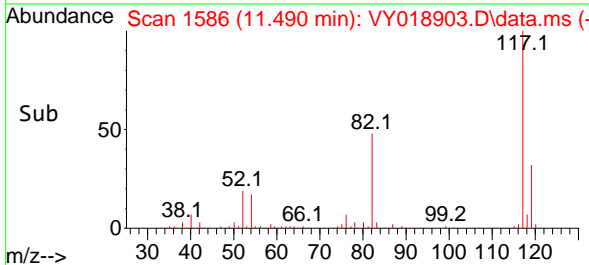
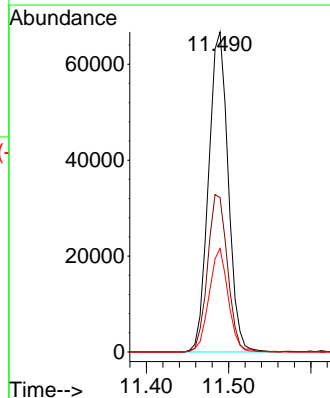
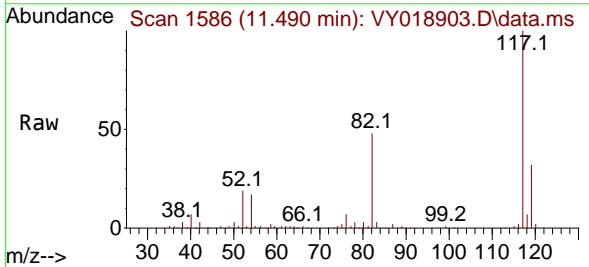
Instrument : MSVOA_Y
 ClientSampleId : VY0724SBL01

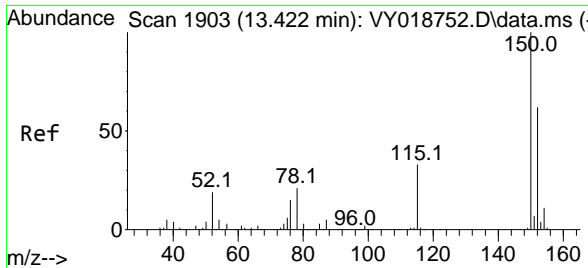
Tgt Ion	Resp	Lower	Upper
95	46376	100	
174	90.6	0.0	175.6
176	88.1	0.0	171.4



#63
 Chlorobenzene-d5
 Concen: 50.000 ug/l
 RT: 11.490 min Scan# 1586
 Delta R.T. 0.006 min
 Lab File: VY018903.D
 Acq: 24 Jul 2024 11:49

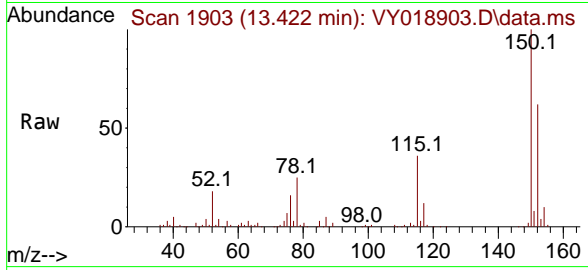
Tgt Ion	Resp	Lower	Upper
117	110914	100	
82	48.2	42.4	63.6
119	32.4	25.9	38.9





#72
 1,4-Dichlorobenzene-d4
 Concen: 50.000 ug/l
 RT: 13.422 min Scan# 1903
 Delta R.T. 0.000 min
 Lab File: VY018903.D
 Acq: 24 Jul 2024 11:49

Instrument : MSVOA_Y
 ClientSampleId : VY0724SBL01



Tgt Ion	Resp	Ion Ratio	Lower	Upper
152	48335	100		
115	56.0	28.2	84.7	
150	159.5	0.0	345.6	

