

Data Path : Z:\voasrv\HPCHEM1\MSVOA\_Y\Data\VY080924\  
 Data File : VY018959.D  
 Acq On : 09 Aug 2024 11:54  
 Operator : SY/MD  
 Sample : P3460-01  
 Misc : 5.08g/5.0mL/MSVOA\_Y/SOIL/B  
 ALS Vial : 8 Sample Multiplier: 1

Instrument :  
 MSVOA\_Y  
 ClientSampleId :  
 72-11929

Quant Time: Aug 09 17:05:08 2024  
 Quant Method : Z:\voasrv\HPCHEM1\MSVOA\_Y\methods\82Y080824S.M  
 Quant Title : SW846 8260  
 QLast Update : Fri Aug 09 04:24:33 2024  
 Response via : Initial Calibration

Compound	R.T.	QIon	Response	Conc	Units	Dev(Min)
Internal Standards						
1) Pentafluorobenzene	7.695	168	77508	50.000	ug/l	0.00
34) 1,4-Difluorobenzene	8.604	114	125422	50.000	ug/l	0.00
63) Chlorobenzene-d5	11.414	117	101596	50.000	ug/l	0.00
72) 1,4-Dichlorobenzene-d4	13.347	152	40149	50.000	ug/l	0.00
System Monitoring Compounds						
33) 1,2-Dichloroethane-d4	8.049	65	31965	46.972	ug/l	0.00
Spiked Amount	50.000	Range	50 - 163	Recovery	=	93.940%
35) Dibromofluoromethane	7.622	113	38460	48.012	ug/l	0.00
Spiked Amount	50.000	Range	54 - 147	Recovery	=	96.020%
50) Toluene-d8	10.103	98	146164	47.504	ug/l	0.00
Spiked Amount	50.000	Range	58 - 134	Recovery	=	95.000%
62) 4-Bromofluorobenzene	12.408	95	35612	39.012	ug/l	0.00
Spiked Amount	50.000	Range	30 - 143	Recovery	=	78.020%

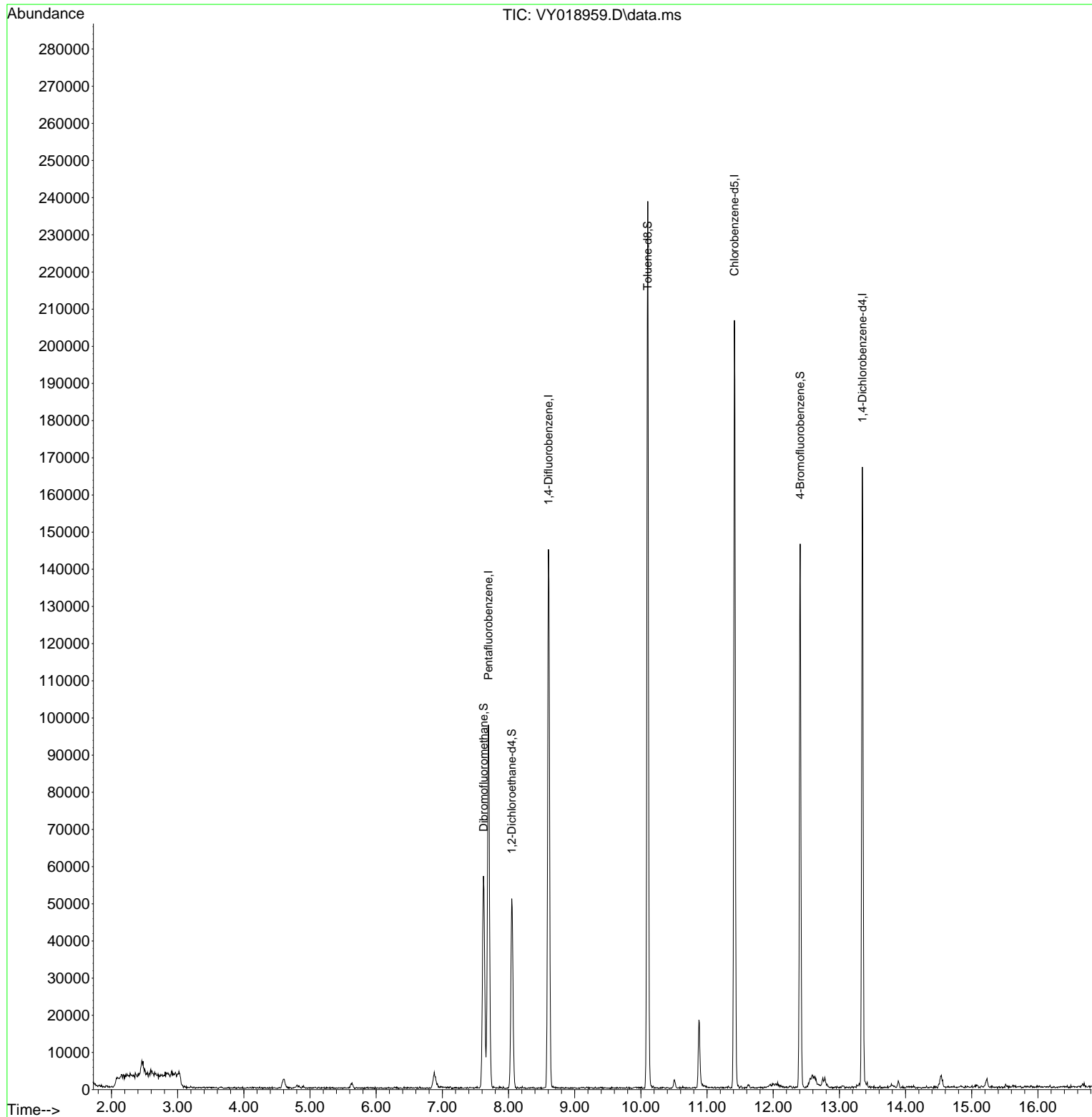
Target Compounds Qvalue

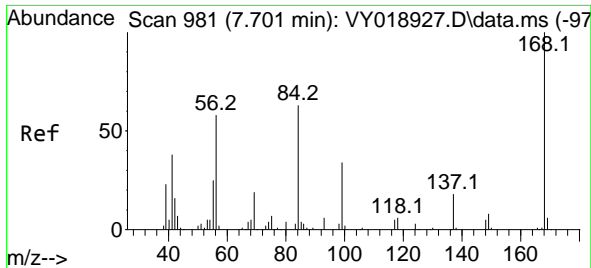
(#) = qualifier out of range (m) = manual integration (+) = signals summed

Data Path : Z:\voasrv\HPCHEM1\MSVOA\_Y\Data\VY080924\  
 Data File : VY018959.D  
 Acq On : 09 Aug 2024 11:54  
 Operator : SY/MD  
 Sample : P3460-01  
 Misc : 5.08g/5.0mL/MSVOA\_Y/SOIL/B  
 ALS Vial : 8 Sample Multiplier: 1

Instrument :  
 MSVOA\_Y  
 ClientSampleId :  
 72-11929

Quant Time: Aug 09 17:05:08 2024  
 Quant Method : Z:\voasrv\HPCHEM1\MSVOA\_Y\methods\82Y080824S.M  
 Quant Title : SW846 8260  
 QLast Update : Fri Aug 09 04:24:33 2024  
 Response via : Initial Calibration

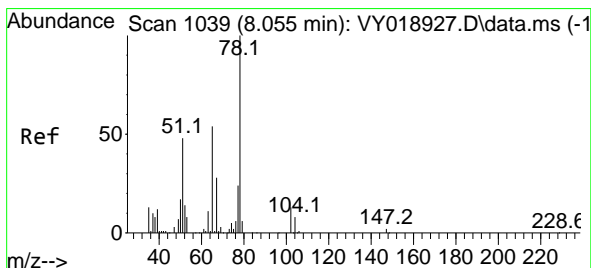
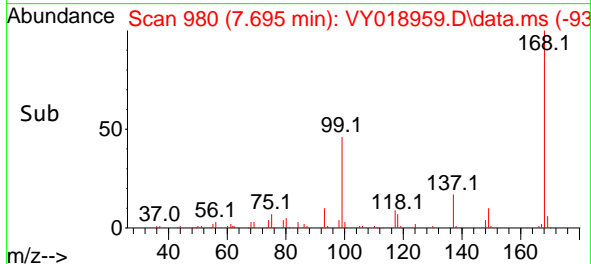
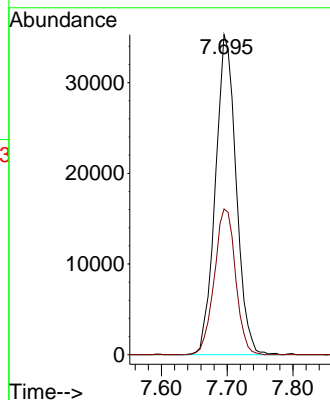
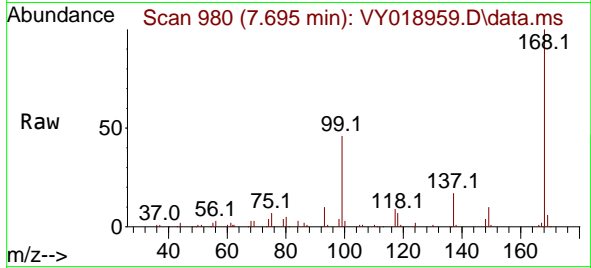




#1  
 Pentafluorobenzene  
 Concen: 50.000 ug/l  
 RT: 7.695 min Scan# 99  
 Delta R.T. -0.006 min  
 Lab File: VY018959.D  
 Acq: 09 Aug 2024 11:54

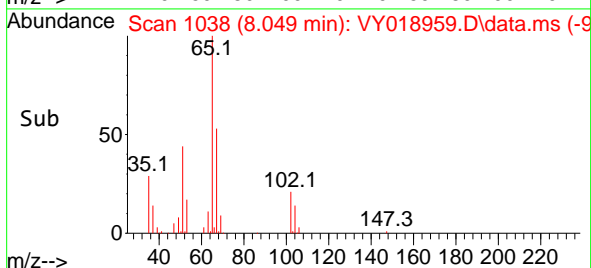
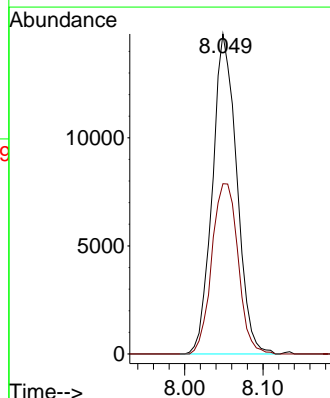
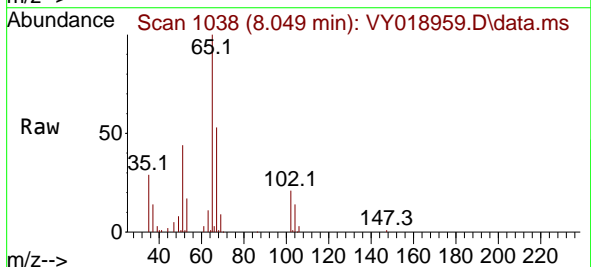
Instrument :  
 MSVOA\_Y  
 ClientSampleId :  
 72-11929

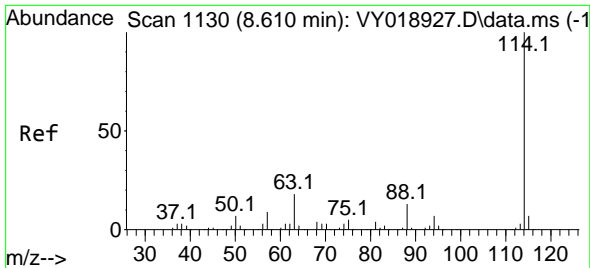
Tgt Ion:168 Resp: 77508  
 Ion Ratio Lower Upper  
 168 100  
 99 45.5 39.1 58.7



#33  
 1,2-Dichloroethane-d4  
 Concen: 46.972 ug/l  
 RT: 8.049 min Scan# 1038  
 Delta R.T. -0.006 min  
 Lab File: VY018959.D  
 Acq: 09 Aug 2024 11:54

Tgt Ion: 65 Resp: 31965  
 Ion Ratio Lower Upper  
 65 100  
 67 57.4 0.0 109.6

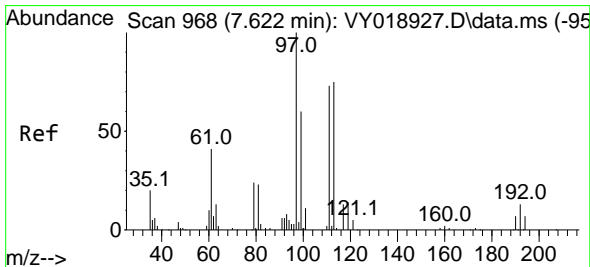
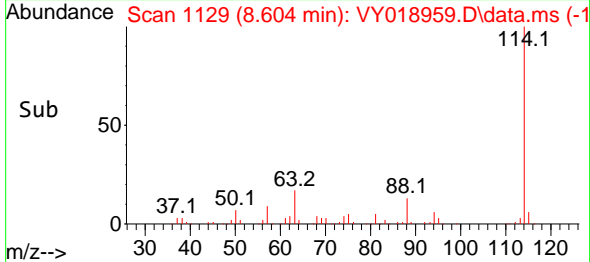
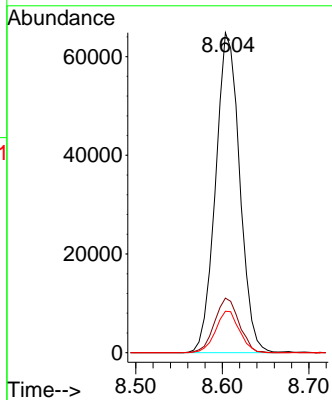
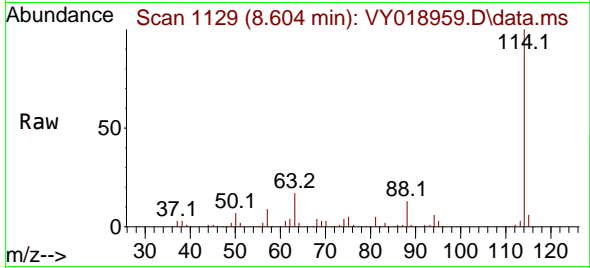




#34  
 1,4-Difluorobenzene  
 Concen: 50.000 ug/l  
 RT: 8.604 min Scan# 1129  
 Delta R.T. -0.006 min  
 Lab File: VY018959.D  
 Acq: 09 Aug 2024 11:54

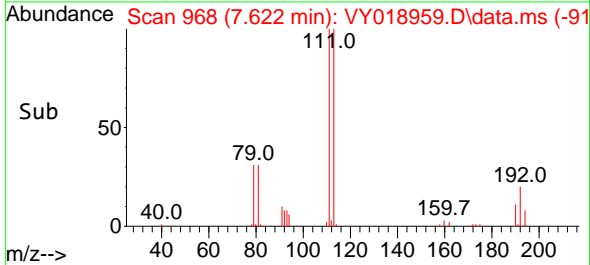
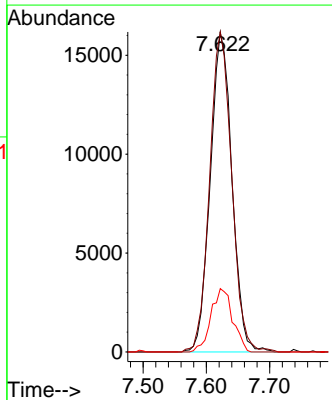
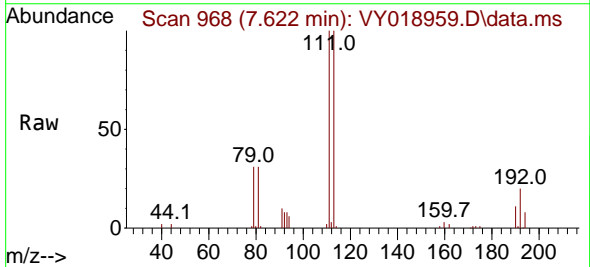
Instrument : MSVOA\_Y  
 ClientSampleId : 72-11929

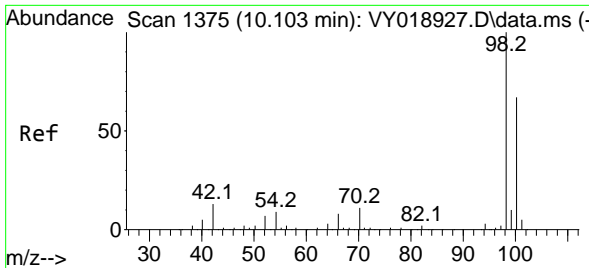
Tgt Ion	Resp	Lower	Upper
114	125422		
63	17.1	0.0	35.0
88	13.0	0.0	27.2



#35  
 Dibromofluoromethane  
 Concen: 48.012 ug/l  
 RT: 7.622 min Scan# 968  
 Delta R.T. 0.000 min  
 Lab File: VY018959.D  
 Acq: 09 Aug 2024 11:54

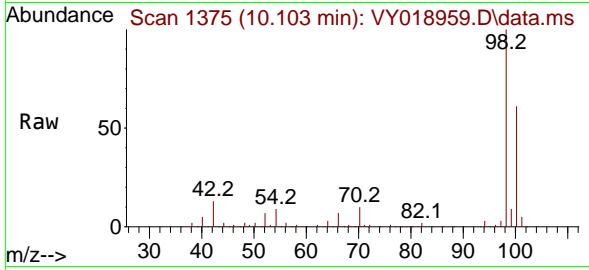
Tgt Ion	Resp	Lower	Upper
113	38460		
111	101.7	82.2	123.4
192	19.8	15.9	23.9



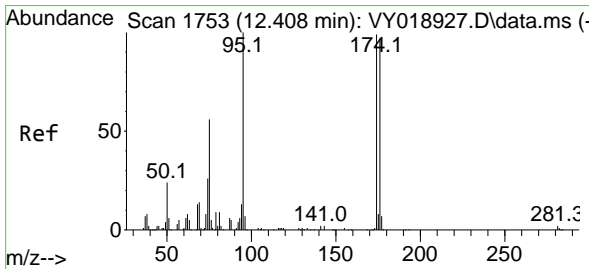
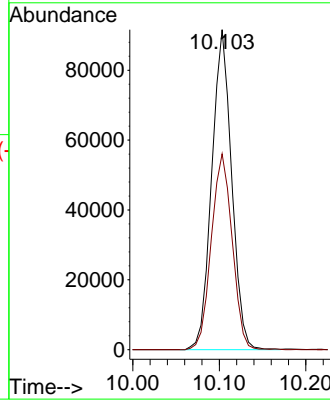
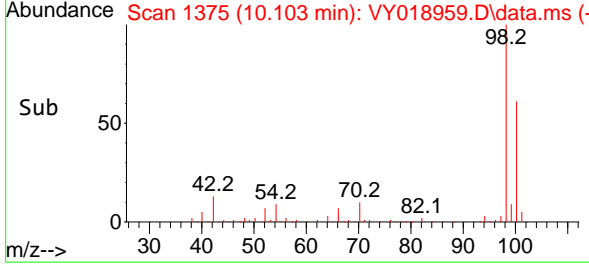


#50  
 Toluene-d8  
 Concen: 47.504 ug/l  
 RT: 10.103 min Scan# 11  
 Delta R.T. 0.000 min  
 Lab File: VY018959.D  
 Acq: 09 Aug 2024 11:54

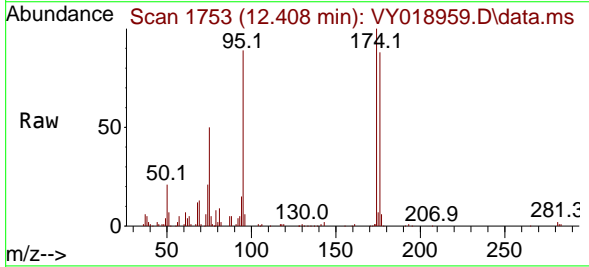
Instrument :  
 MSVOA\_Y  
 ClientSampleId :  
 72-11929



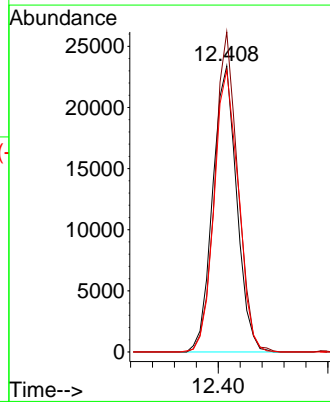
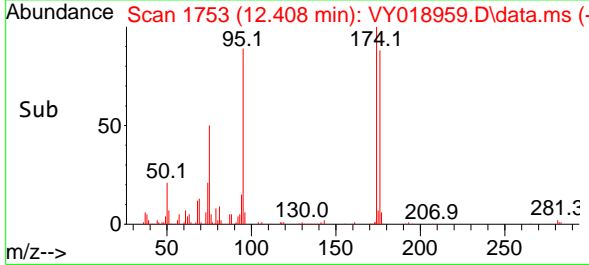
Tgt Ion: 98 Resp: 146164  
 Ion Ratio Lower Upper  
 98 100  
 100 64.2 52.0 78.0

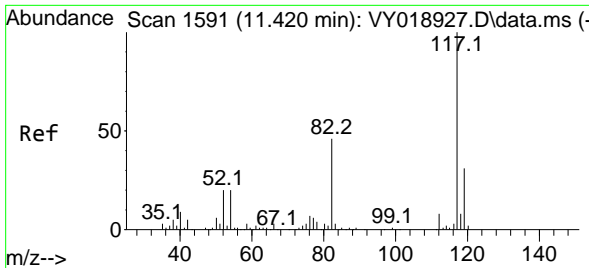


#62  
 4-Bromofluorobenzene  
 Concen: 39.012 ug/l  
 RT: 12.408 min Scan# 1753  
 Delta R.T. 0.000 min  
 Lab File: VY018959.D  
 Acq: 09 Aug 2024 11:54



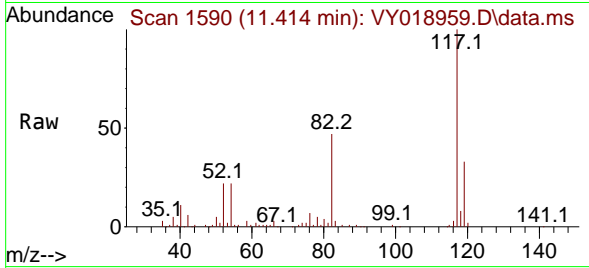
Tgt Ion: 95 Resp: 35612  
 Ion Ratio Lower Upper  
 95 100  
 174 107.2 0.0 175.6  
 176 99.4 0.0 171.4





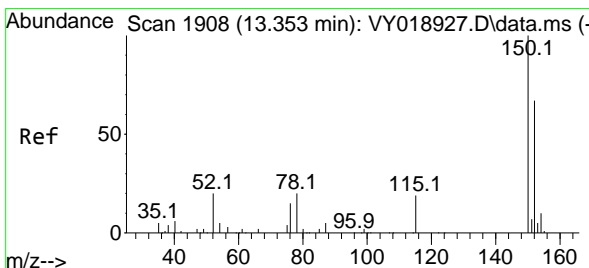
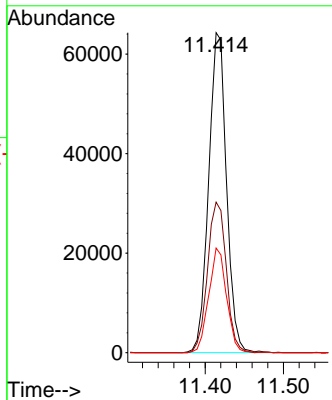
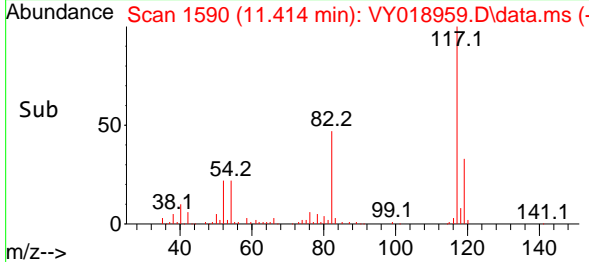
#63  
 Chlorobenzene-d5  
 Concen: 50.000 ug/l  
 RT: 11.414 min Scan# 11  
 Delta R.T. -0.006 min  
 Lab File: VY018959.D  
 Acq: 09 Aug 2024 11:54

Instrument : MSVOA\_Y  
 ClientSampleId : 72-11929

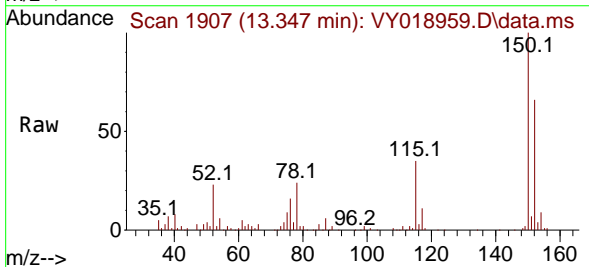


Tgt Ion:117 Resp: 101596

Ion	Ratio	Lower	Upper
117	100		
82	47.1	42.4	63.6
119	32.7	25.9	38.9



#72  
 1,4-Dichlorobenzene-d4  
 Concen: 50.000 ug/l  
 RT: 13.347 min Scan# 1907  
 Delta R.T. -0.006 min  
 Lab File: VY018959.D  
 Acq: 09 Aug 2024 11:54



Tgt Ion:152 Resp: 40149

Ion	Ratio	Lower	Upper
152	100		
115	53.0	28.2	84.7
150	150.5	0.0	345.6

