

Data Path : Z:\voasrv\HPCHEM1\MSVOA_Y\Data\VY080924\
 Data File : VY018974.D
 Acq On : 09 Aug 2024 18:06
 Operator : SY/MD
 Sample : P3518-25
 Misc : 3.81g/5.0mL/MSVOA_Y/SOIL/A
 ALS Vial : 23 Sample Multiplier: 1

Instrument :
 MSVOA_Y
 ClientSampleId :
 OU4-TS-13-080724

Integration Parameters: RTEINT.P

Integrator: RTE
 Smoothing : ON Filtering: 5
 Sampling : 1 Min Area: 3 % of largest Peak
 Start Thrs: 0.2 Max Peaks: 100
 Stop Thrs : 0 Peak Location: TOP

If leading or trailing edge < 100 prefer < Baseline drop else tangent >
 Peak separation: 5

Method : Z:\voasrv\HPCHEM1\MSVOA_Y\methods\82Y080824S.M
 Title : SW846 8260

Signal : TIC: VY018974.D\data.ms

peak #	R.T. min	first scan	max scan	last scan	PK TY	peak height	corr. area	corr. % max.	% of total
1	2.092	53	61	65	rBV5	2223	7468	1.44%	0.313%
2	2.464	117	122	128	rBV5	3833	9441	1.82%	0.396%
3	3.025	212	214	222	rVB4	3028	5796	1.12%	0.243%
4	7.622	957	968	974	rBV2	77164	188082	36.25%	7.882%
5	7.695	974	980	989	rVB	120431	267673	51.60%	11.217%
6	8.049	1029	1038	1050	rBV	71728	161489	31.13%	6.767%
7	8.603	1119	1129	1142	rBV	182196	353864	68.21%	14.829%
8	10.103	1367	1375	1385	rBV	305247	518776	100.00%	21.739%
9	11.414	1582	1590	1605	rVB	253390	387198	74.64%	16.226%
10	12.408	1746	1753	1761	rVB	165759	254414	49.04%	10.661%
11	13.346	1901	1907	1914	rBV	157607	232135	44.75%	9.728%

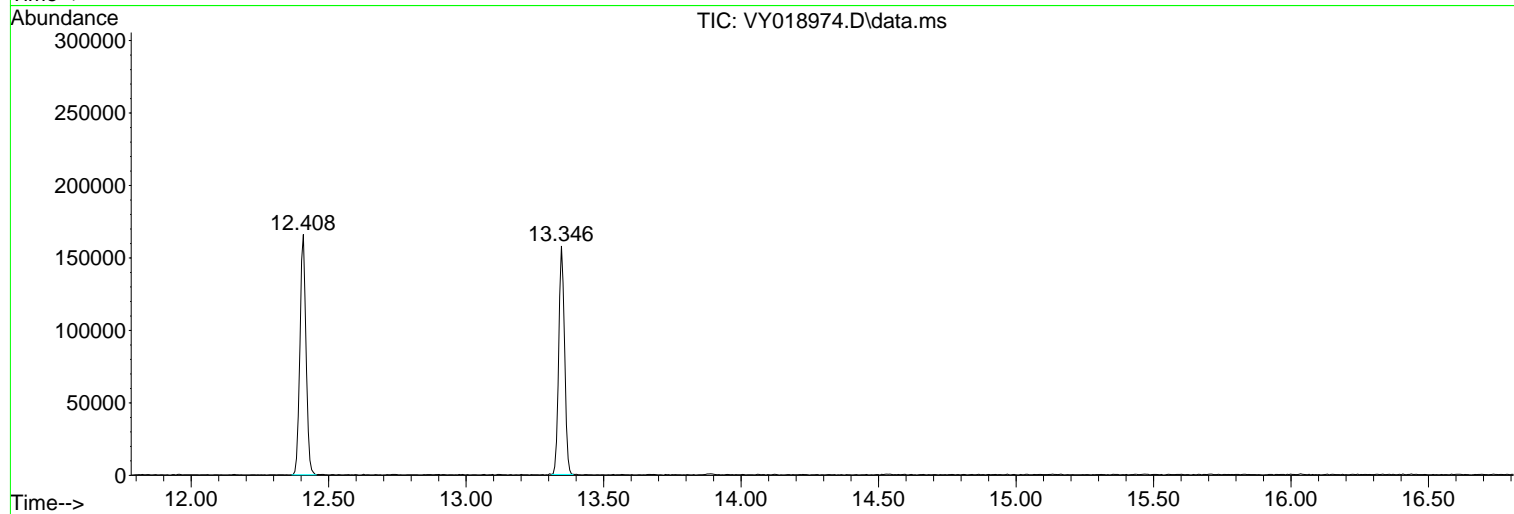
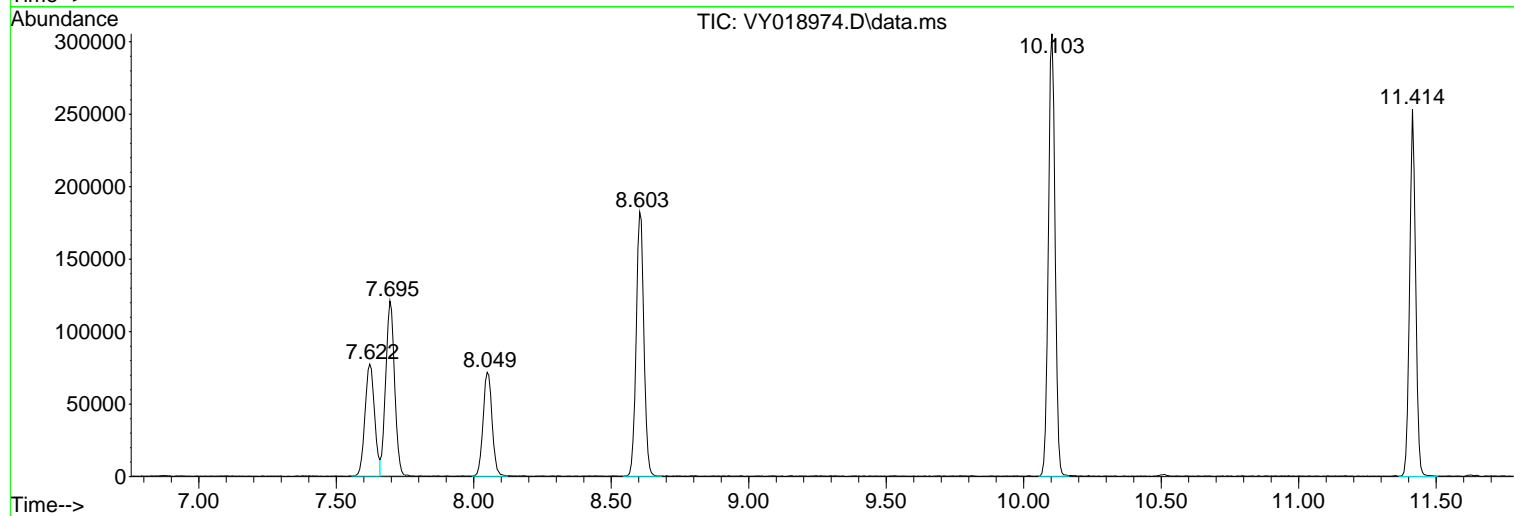
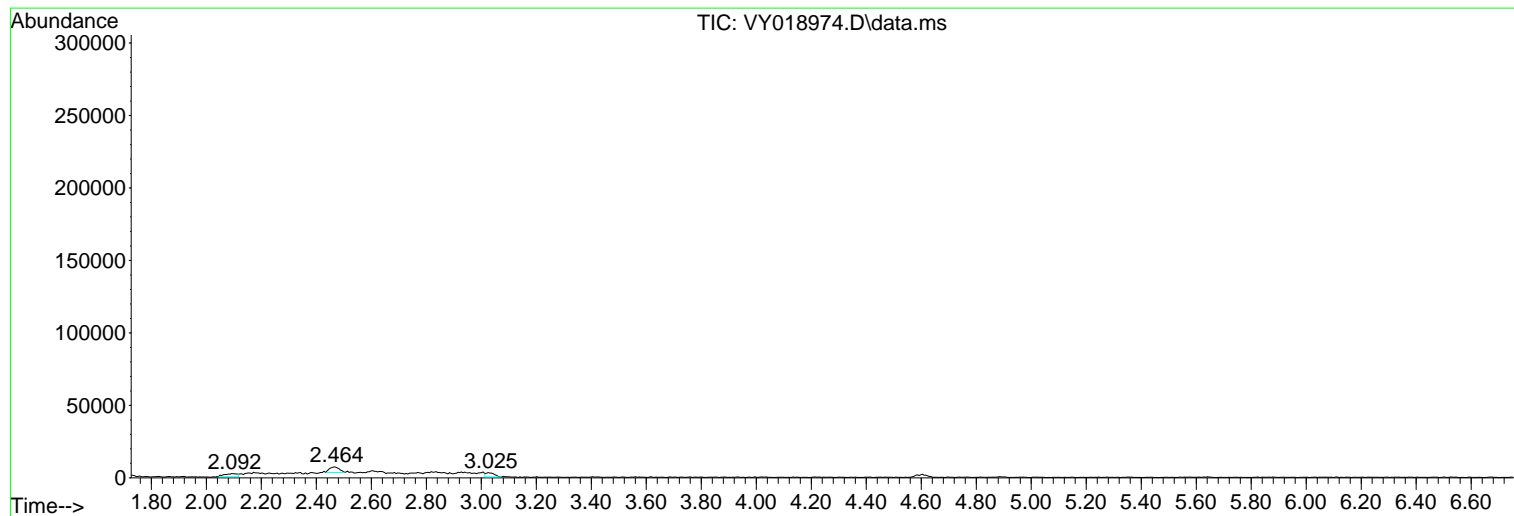
Sum of corrected areas: 2386336

Data Path : Z:\voasrv\HPCHEM1\MSVOA_Y\Data\VY080924\
Data File : VY018974.D
Acq On : 09 Aug 2024 18:06
Operator : SY/MD
Sample : P3518-25
Misc : 3.81g/5.0mL/MSVOA_Y/SOIL/A
ALS Vial : 23 Sample Multiplier: 1

Instrument :
MSVOA_Y
ClientSampleId :
OU4-TS-13-080724

Quant Method : Z:\voasrv\HPCHEM1\MSVOA_Y\methods\82Y080824S.M
Quant Title : SW846 8260

TIC Library : C:\Database\NIST20.L
TIC Integration Parameters: LSCINT.P



Library Search Compound Report

Data Path : Z:\voasrv\HPCHEM1\MSVOA_Y\Data\VY080924\
Data File : VY018974.D
Acq On : 09 Aug 2024 18:06
Operator : SY/MD
Sample : P3518-25
Misc : 3.81g/5.0mL/MSVOA_Y/SOIL/A
ALS Vial : 23 Sample Multiplier: 1

Instrument :
MSVOA_Y
ClientSampleId :
OU4-TS-13-080724

Quant Method : Z:\voasrv\HPCHEM1\MSVOA_Y\methods\82Y080824S.M
Quant Title : SW846 8260

TIC Library : C:\Database\NIST20.L
TIC Integration Parameters: LSCINT.P

No Library Search Compounds Detected

Data Path : Z:\voasrv\HPCHEM1\MSVOA_Y\Data\VY080924\
Data File : VY018974.D
Acq On : 09 Aug 2024 18:06
Operator : SY/MD
Sample : P3518-25
Misc : 3.81g/5.0mL/MSVOA_Y/SOIL/A
ALS Vial : 23 Sample Multiplier: 1

Instrument :
MSVOA_Y
ClientSampleId :
OU4-TS-13-080724

Quant Method : Z:\voasrv\HPCHEM1\MSVOA_Y\methods\82Y080824S.M
Quant Title : SW846 8260

TIC Library : C:\Database\NIST20.L
TIC Integration Parameters: LSCINT.P

TIC Top Hit name	RT	EstConc	Units	Response	--Internal Standard--			
					#	RT	Resp	Conc
