

Data Path : Z:\voasrv\HPCHEM1\MSVOA\_Y\Data\VY081224\  
 Data File : VY018994.D  
 Acq On : 12 Aug 2024 11:56  
 Operator : SY/MD  
 Sample : P3519-01  
 Misc : 3.72g/5.0mL/MSVOA\_Y/SOIL/A  
 ALS Vial : 7 Sample Multiplier: 1

Instrument :  
 MSVOA\_Y  
 ClientSampleId :  
 OU4-TS-16-080724

Quant Time: Aug 13 01:12:29 2024  
 Quant Method : Z:\voasrv\HPCHEM1\MSVOA\_Y\methods\82Y080824S.M  
 Quant Title : SW846 8260  
 QLast Update : Fri Aug 09 04:24:33 2024  
 Response via : Initial Calibration

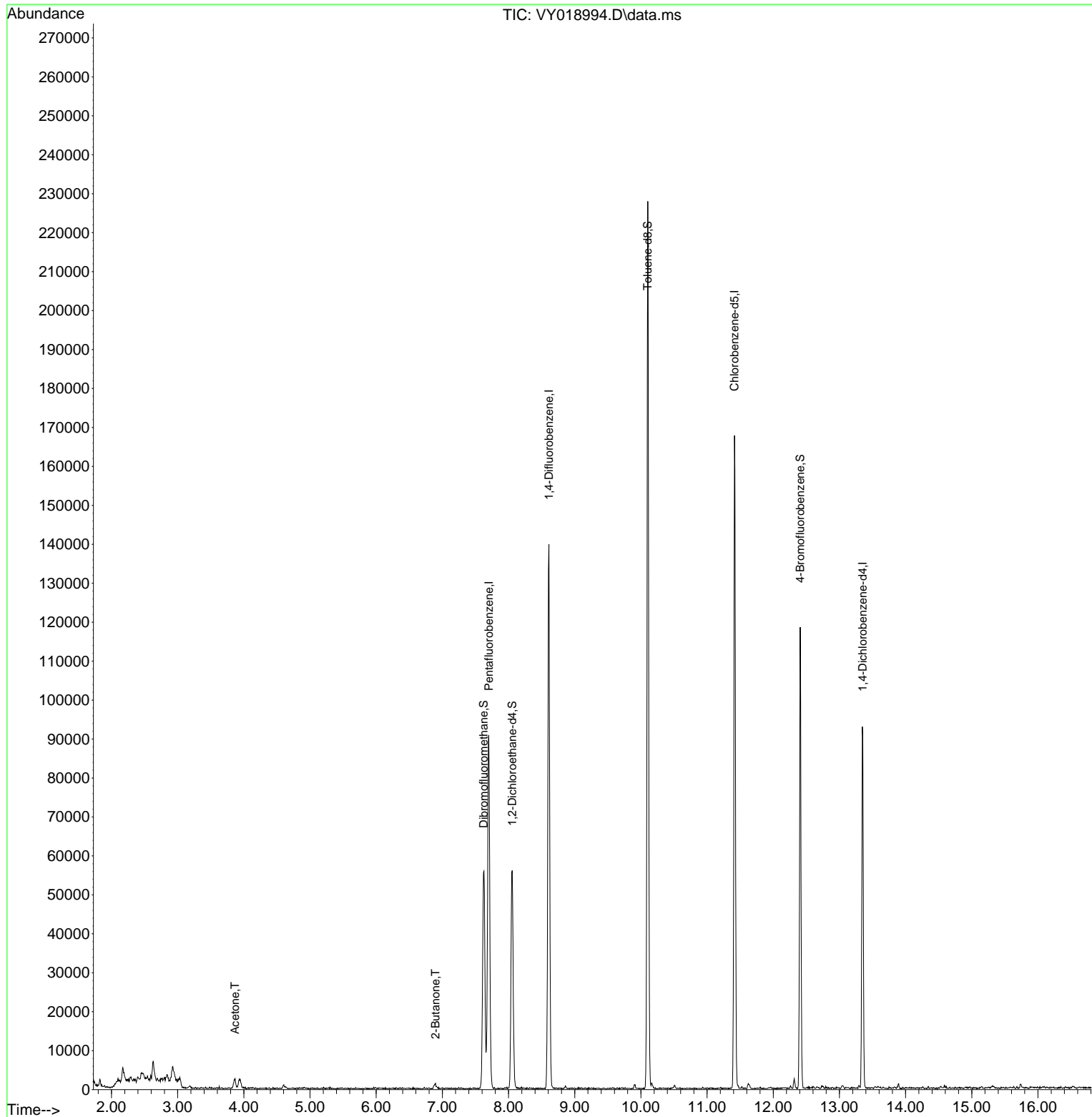
Compound	R.T.	QIon	Response	Conc	Units	Dev(Min)
-----						
Internal Standards						
1) Pentafluorobenzene	7.701	168	75249	50.000	ug/l	0.00
34) 1,4-Difluorobenzene	8.609	114	117041	50.000	ug/l	0.00
63) Chlorobenzene-d5	11.414	117	84604	50.000	ug/l	0.00
72) 1,4-Dichlorobenzene-d4	13.352	152	22184	50.000	ug/l	0.00
System Monitoring Compounds						
33) 1,2-Dichloroethane-d4	8.055	65	36967	55.953	ug/l	0.00
Spiked Amount	50.000	Range	50 - 163	Recovery	=	111.900%
35) Dibromofluoromethane	7.622	113	37251	49.832	ug/l	0.00
Spiked Amount	50.000	Range	54 - 147	Recovery	=	99.660%
50) Toluene-d8	10.103	98	137041	47.728	ug/l	0.00
Spiked Amount	50.000	Range	58 - 134	Recovery	=	95.460%
62) 4-Bromofluorobenzene	12.408	95	28055	32.934	ug/l	0.00
Spiked Amount	50.000	Range	30 - 143	Recovery	=	65.860%
Target Compounds						
						Qvalue
16) Acetone	3.866	43	3746	33.432	ug/l	93
25) 2-Butanone	6.896	43	1718	8.031	ug/l	89
-----						

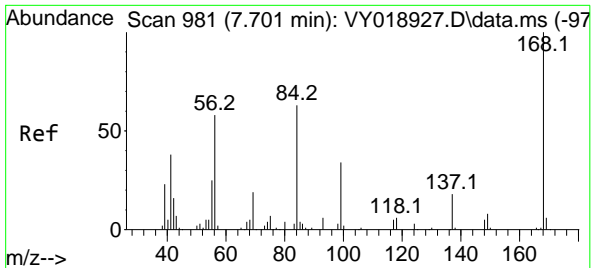
(#) = qualifier out of range (m) = manual integration (+) = signals summed

Data Path : Z:\voasrv\HPCHEM1\MSVOA\_Y\Data\VY081224\  
 Data File : VY018994.D  
 Acq On : 12 Aug 2024 11:56  
 Operator : SY/MD  
 Sample : P3519-01  
 Misc : 3.72g/5.0mL/MSVOA\_Y/SOIL/A  
 ALS Vial : 7 Sample Multiplier: 1

Instrument :  
 MSVOA\_Y  
 ClientSampleId :  
 OU4-TS-16-080724

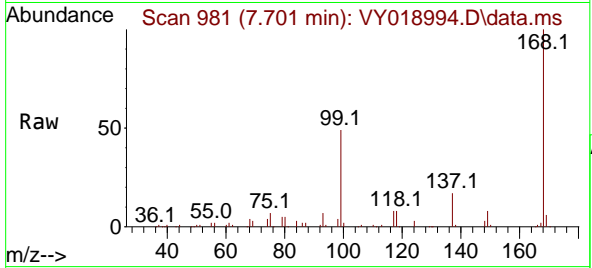
Quant Time: Aug 13 01:12:29 2024  
 Quant Method : Z:\voasrv\HPCHEM1\MSVOA\_Y\methods\82Y080824S.M  
 Quant Title : SW846 8260  
 QLast Update : Fri Aug 09 04:24:33 2024  
 Response via : Initial Calibration



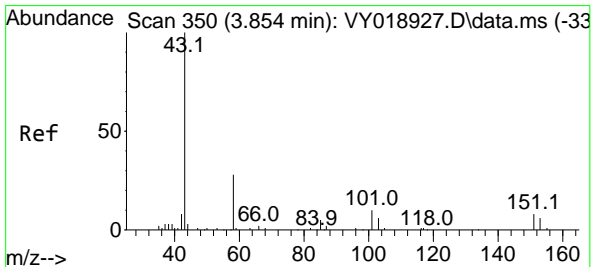
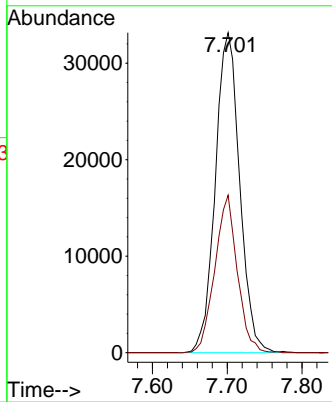
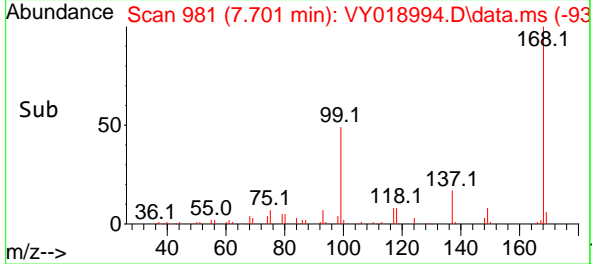


#1  
 Pentafluorobenzene  
 Concen: 50.000 ug/l  
 RT: 7.701 min Scan# 91  
 Delta R.T. 0.000 min  
 Lab File: VY018994.D  
 Acq: 12 Aug 2024 11:56

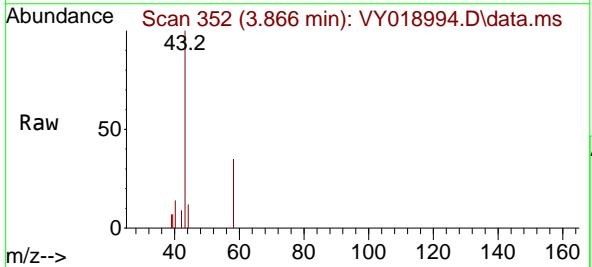
Instrument :  
 MSVOA\_Y  
 ClientSampleId :  
 OU4-TS-16-080724



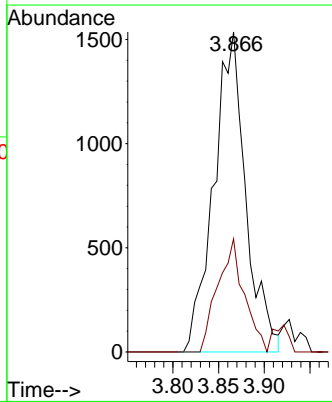
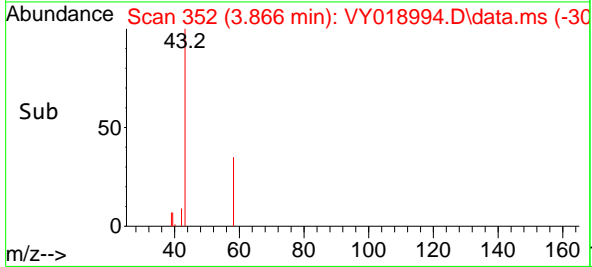
Tgt Ion:168 Resp: 75249  
 Ion Ratio Lower Upper  
 168 100  
 99 49.2 39.1 58.7

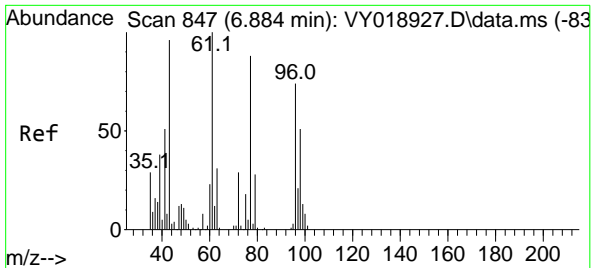


#16  
 Acetone  
 Concen: 33.432 ug/l  
 RT: 3.866 min Scan# 352  
 Delta R.T. 0.012 min  
 Lab File: VY018994.D  
 Acq: 12 Aug 2024 11:56



Tgt Ion: 43 Resp: 3746  
 Ion Ratio Lower Upper  
 43 100  
 58 35.4 31.7 47.5

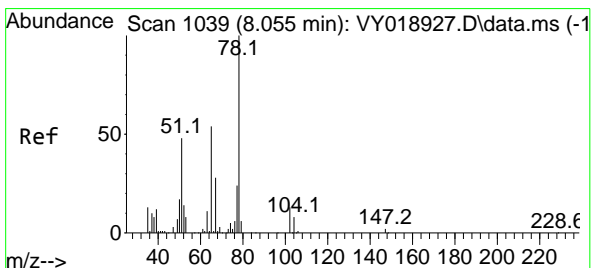
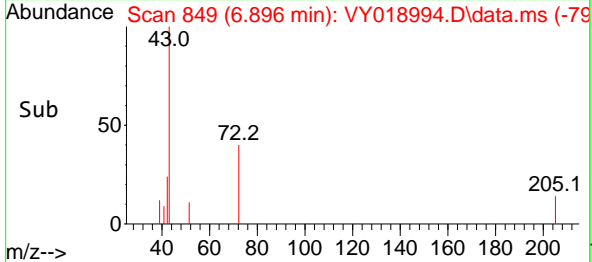
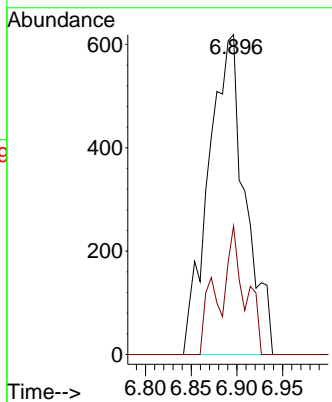
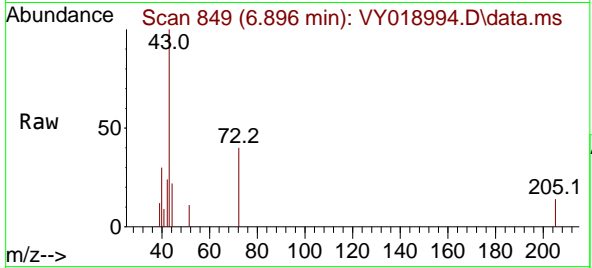




#25  
 2-Butanone  
 Concen: 8.031 ug/l  
 RT: 6.896 min Scan# 84  
 Delta R.T. 0.012 min  
 Lab File: VY018994.D  
 Acq: 12 Aug 2024 11:56

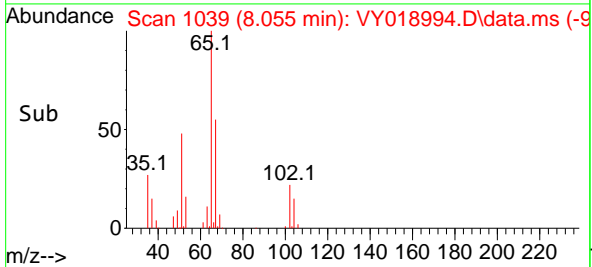
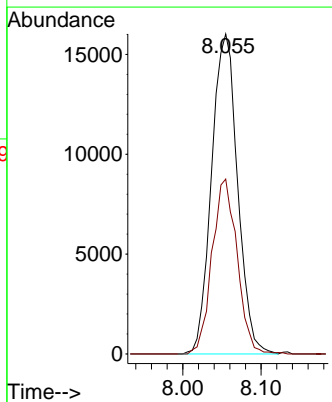
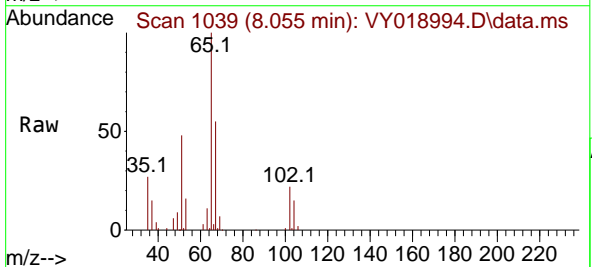
Instrument :  
 MSVOA\_Y  
 ClientSampleId :  
 OU4-TS-16-080724

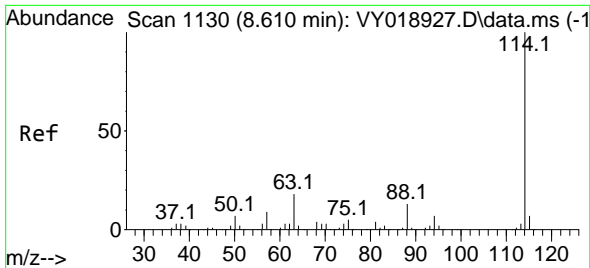
Tgt Ion: 43 Resp: 1718  
 Ion Ratio Lower Upper  
 43 100  
 72 40.2 27.3 40.9



#33  
 1,2-Dichloroethane-d4  
 Concen: 55.953 ug/l  
 RT: 8.055 min Scan# 1039  
 Delta R.T. -0.000 min  
 Lab File: VY018994.D  
 Acq: 12 Aug 2024 11:56

Tgt Ion: 65 Resp: 36967  
 Ion Ratio Lower Upper  
 65 100  
 67 52.6 0.0 109.6



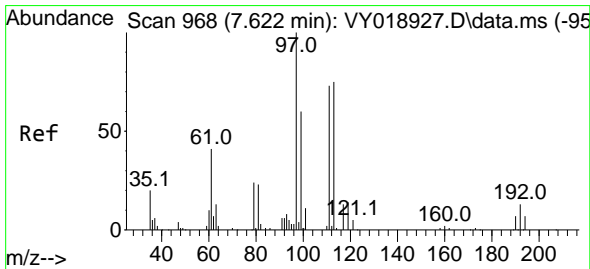
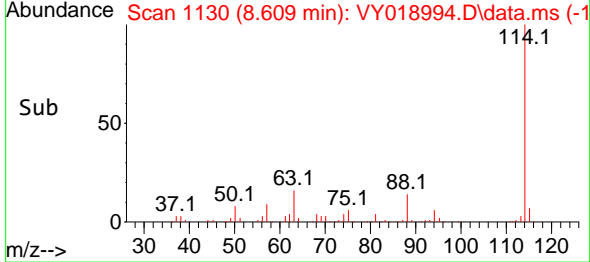
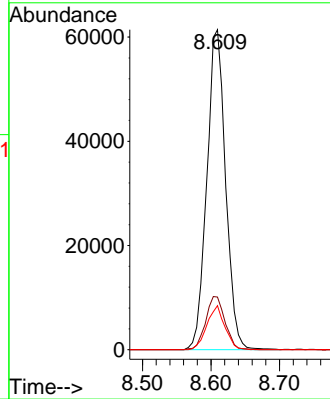
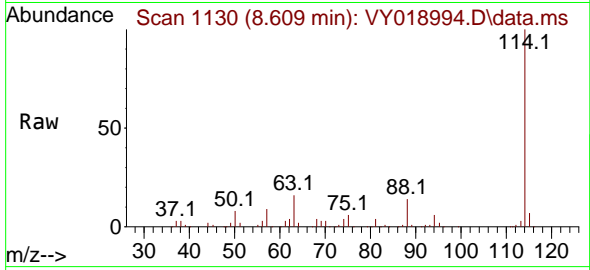


#34  
 1,4-Difluorobenzene  
 Concen: 50.000 ug/l  
 RT: 8.609 min Scan# 1130  
 Delta R.T. -0.000 min  
 Lab File: VY018994.D  
 Acq: 12 Aug 2024 11:56

Instrument : MSVOA\_Y  
 ClientSampleId : OU4-TS-16-080724

Tgt Ion:114 Resp: 117041

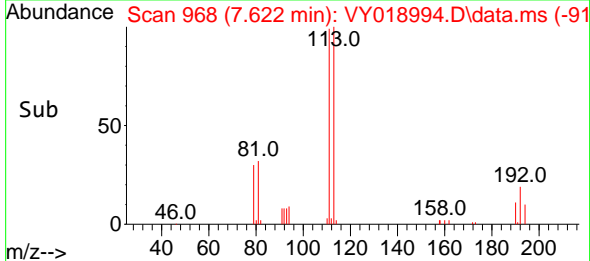
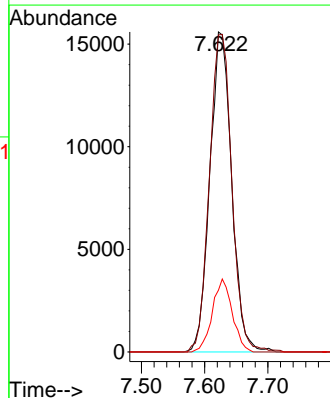
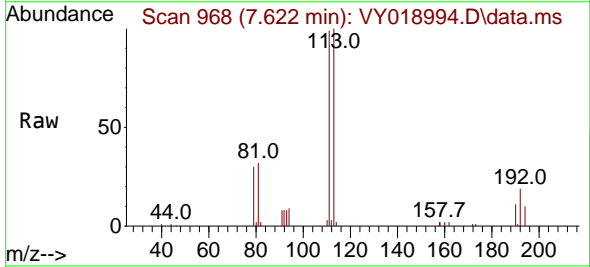
Ion	Ratio	Lower	Upper
114	100		
63	16.4	0.0	35.0
88	13.7	0.0	27.2

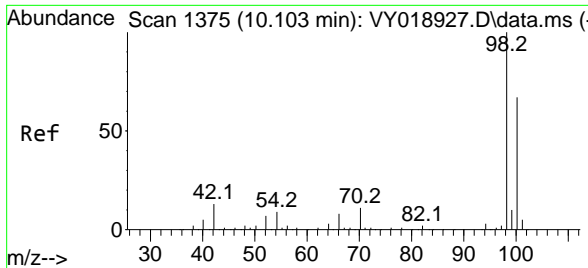


#35  
 Dibromofluoromethane  
 Concen: 49.832 ug/l  
 RT: 7.622 min Scan# 968  
 Delta R.T. -0.000 min  
 Lab File: VY018994.D  
 Acq: 12 Aug 2024 11:56

Tgt Ion:113 Resp: 37251

Ion	Ratio	Lower	Upper
113	100		
111	102.1	82.2	123.4
192	20.9	15.9	23.9

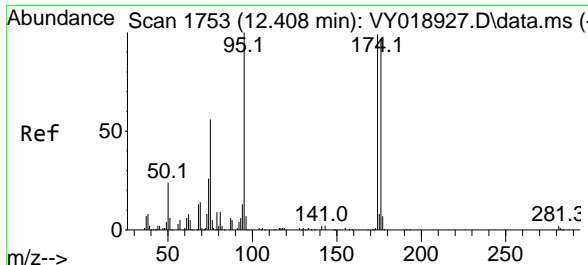
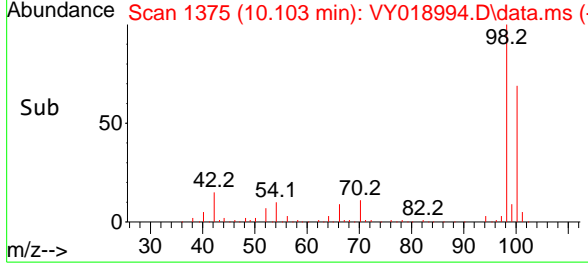
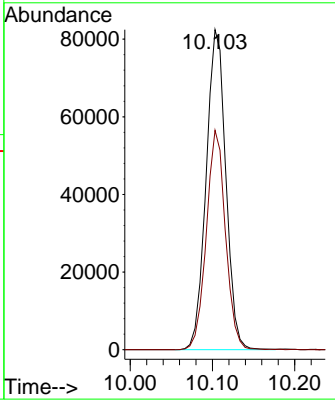
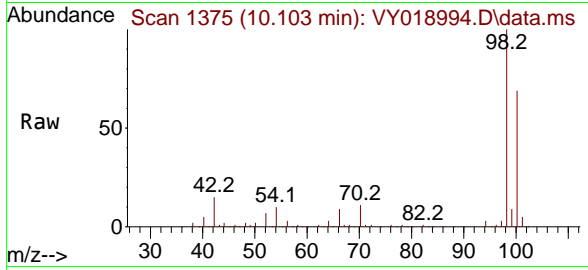




#50  
 Toluene-d8  
 Concen: 47.728 ug/l  
 RT: 10.103 min Scan# 11  
 Delta R.T. -0.000 min  
 Lab File: VY018994.D  
 Acq: 12 Aug 2024 11:56

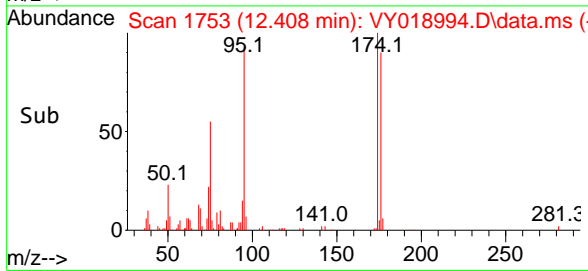
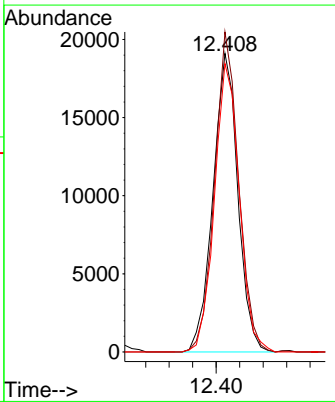
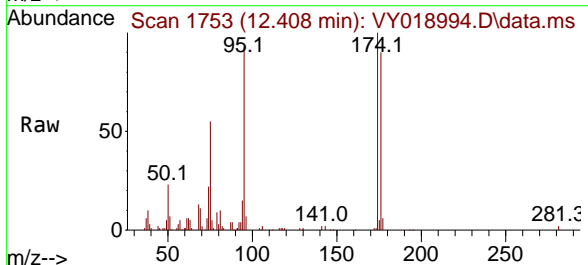
Instrument : MSVOA\_Y  
 ClientSampleId : OU4-TS-16-080724

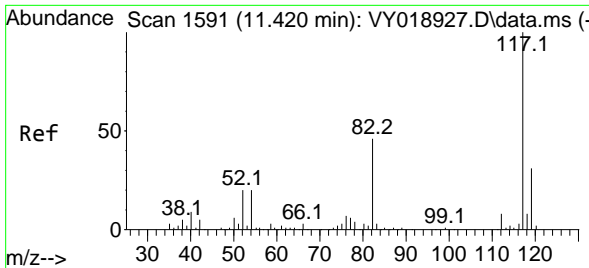
Tgt Ion: 98 Resp: 137041  
 Ion Ratio Lower Upper  
 98 100  
 100 66.7 52.0 78.0



#62  
 4-Bromofluorobenzene  
 Concen: 32.934 ug/l  
 RT: 12.408 min Scan# 1753  
 Delta R.T. -0.000 min  
 Lab File: VY018994.D  
 Acq: 12 Aug 2024 11:56

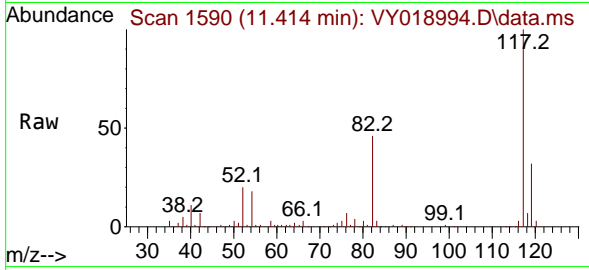
Tgt Ion: 95 Resp: 28055  
 Ion Ratio Lower Upper  
 95 100  
 174 103.9 0.0 175.6  
 176 96.5 0.0 171.4



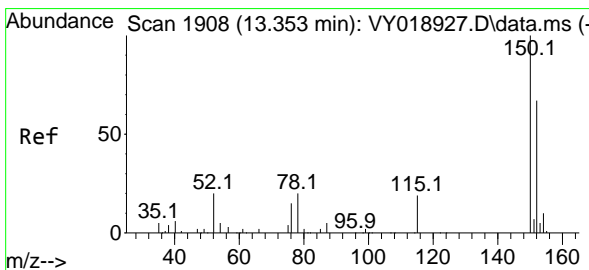
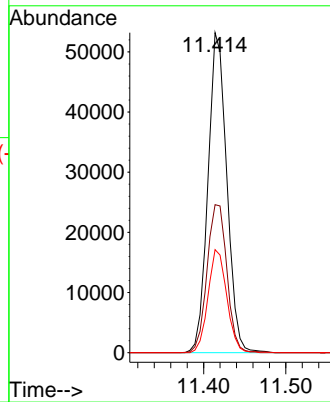
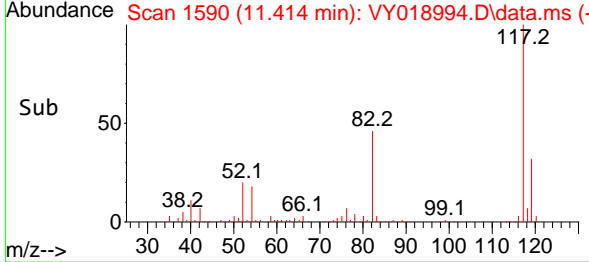


#63  
 Chlorobenzene-d5  
 Concen: 50.000 ug/l  
 RT: 11.414 min Scan# 1117  
 Delta R.T. -0.006 min  
 Lab File: VY018994.D  
 Acq: 12 Aug 2024 11:56

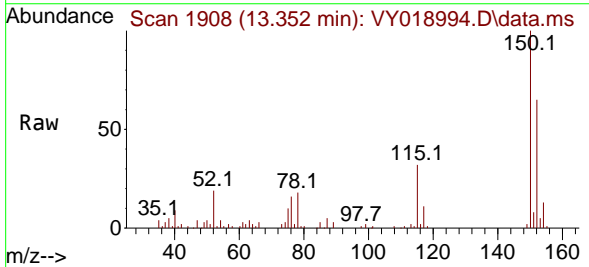
Instrument : MSVOA\_Y  
 ClientSampleId : OU4-TS-16-080724



Tgt Ion:117 Resp: 84604  
 Ion Ratio Lower Upper  
 117 100  
 82 46.2 42.4 63.6  
 119 32.2 25.9 38.9



#72  
 1,4-Dichlorobenzene-d4  
 Concen: 50.000 ug/l  
 RT: 13.352 min Scan# 1908  
 Delta R.T. -0.000 min  
 Lab File: VY018994.D  
 Acq: 12 Aug 2024 11:56



Tgt Ion:152 Resp: 22184  
 Ion Ratio Lower Upper  
 152 100  
 115 54.8 28.2 84.7  
 150 159.5 0.0 345.6

