

Data Path : Z:\voasrv\HPCHEM1\MSVOA_Y\Data\VY081324\
 Data File : VY019035.D
 Acq On : 13 Aug 2024 17:33
 Operator : SY/MD
 Sample : P3519-23
 Misc : 6.46g/5.0mL/MSVOA_Y/SOIL/B
 ALS Vial : 20 Sample Multiplier: 1

Instrument :
 MSVOA_Y
 ClientSampleId :
 OU4-CF-04-080624

Quant Time: Aug 14 01:40:12 2024
 Quant Method : Z:\voasrv\HPCHEM1\MSVOA_Y\methods\82Y080824S.M
 Quant Title : SW846 8260
 QLast Update : Fri Aug 09 04:24:33 2024
 Response via : Initial Calibration

Compound	R.T.	QIon	Response	Conc	Units	Dev(Min)

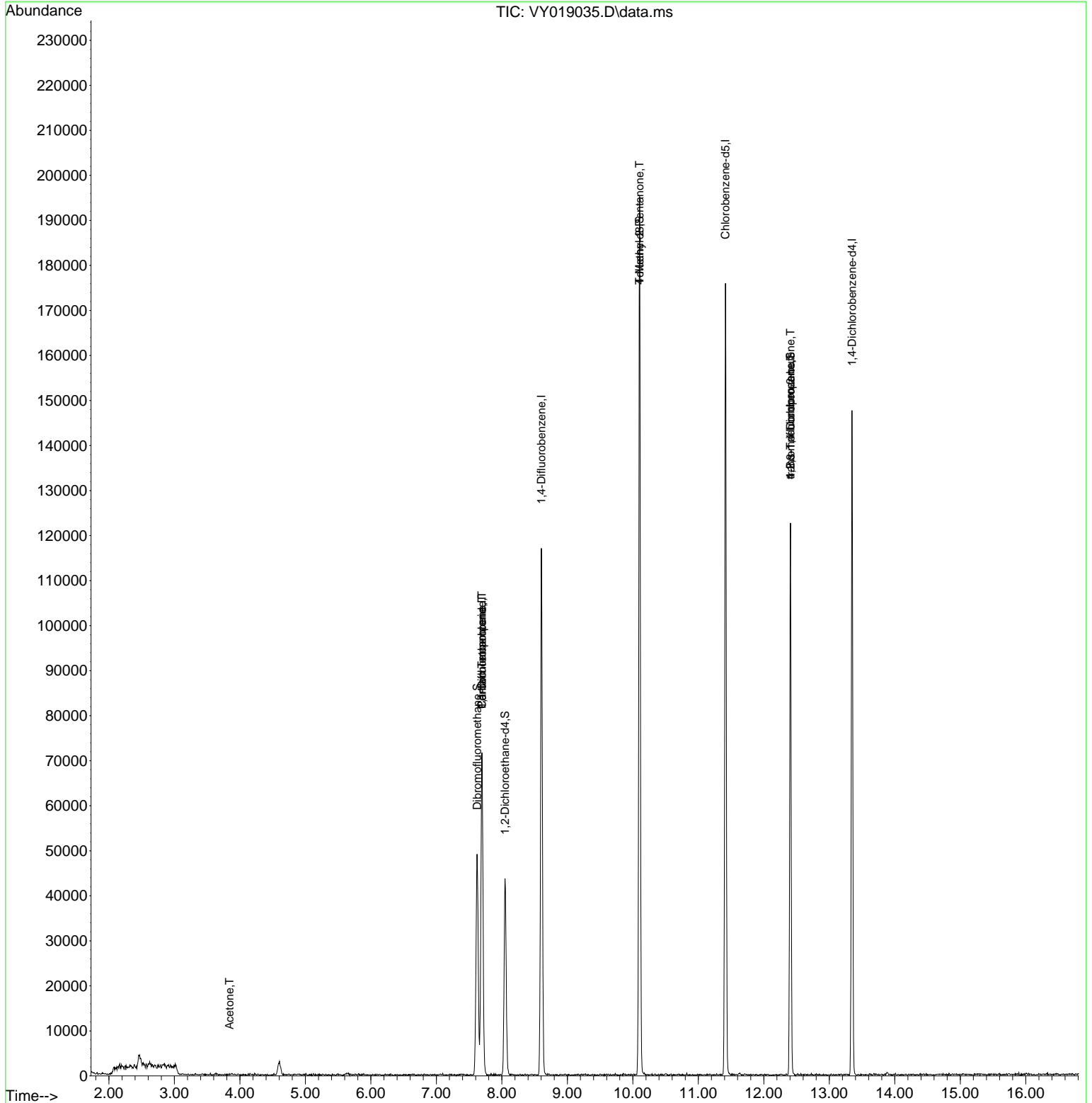
Internal Standards						
1) Pentafluorobenzene	7.695	168	55994	50.000	ug/l	0.00
34) 1,4-Difluorobenzene	8.603	114	96710	50.000	ug/l	0.00
63) Chlorobenzene-d5	11.414	117	86961	50.000	ug/l	0.00
72) 1,4-Dichlorobenzene-d4	13.346	152	33490	50.000	ug/l	0.00
System Monitoring Compounds						
33) 1,2-Dichloroethane-d4	8.049	65	26692	54.294	ug/l	0.00
Spiked Amount	50.000	Range	50 - 163	Recovery	=	108.580%
35) Dibromofluoromethane	7.622	113	30590	49.524	ug/l	0.00
Spiked Amount	50.000	Range	54 - 147	Recovery	=	99.040%
50) Toluene-d8	10.103	98	115875	48.841	ug/l	0.00
Spiked Amount	50.000	Range	58 - 134	Recovery	=	97.680%
62) 4-Bromofluorobenzene	12.408	95	29006	41.209	ug/l	0.00
Spiked Amount	50.000	Range	30 - 143	Recovery	=	82.420%
Target Compounds						
					Qvalue	
3) Chloromethane	2.056	50	67	Below Cal	#	43
11) Tert butyl alcohol	4.848	59	94	Below Cal	#	88
16) Acetone	3.842	43	48	12.885	ug/l #	1
20) Methylene Chloride	4.592	84	1709	Below Cal	#	81
31) Cyclohexane	7.695	56	1479	Below Cal	#	48
36) 1,1-Dichloropropene	7.695	75	4345	5.240	ug/l #	47
38) Carbon Tetrachloride	7.695	117	5214	5.485	ug/l #	18
41) Methacrylonitrile	7.207	41	72	Below Cal	#	15
51) 4-Methyl-2-Pentanone	10.103	43	773	1.945	ug/l #	1
76) 1,2,3-Trichloropropane	12.408	75	17845	71.524	ug/l #	100
81) trans-1,4-Dichloro-2-b...	12.408	75	17845	147.383	ug/l #	16

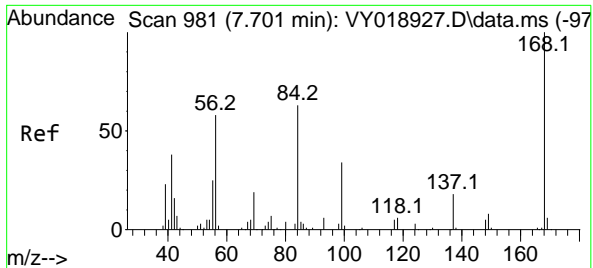
(#) = qualifier out of range (m) = manual integration (+) = signals summed

Data Path : Z:\voasrv\HPCHEM1\MSVOA_Y\Data\VY081324\
 Data File : VY019035.D
 Acq On : 13 Aug 2024 17:33
 Operator : SY/MD
 Sample : P3519-23
 Misc : 6.46g/5.0mL/MSVOA_Y/SOIL/B
 ALS Vial : 20 Sample Multiplier: 1

Instrument :
 MSVOA_Y
 ClientSampleId :
 OU4-CF-04-080624

Quant Time: Aug 14 01:40:12 2024
 Quant Method : Z:\voasrv\HPCHEM1\MSVOA_Y\methods\82Y080824S.M
 Quant Title : SW846 8260
 QLast Update : Fri Aug 09 04:24:33 2024
 Response via : Initial Calibration

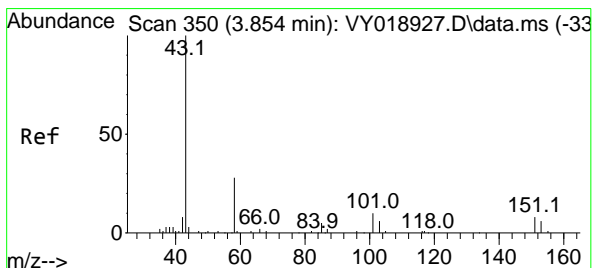
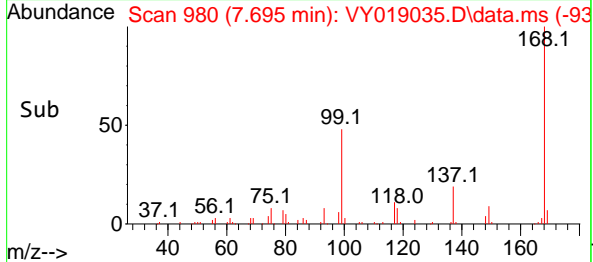
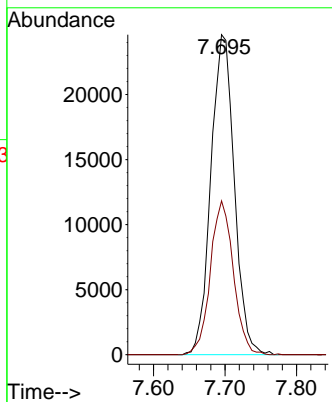
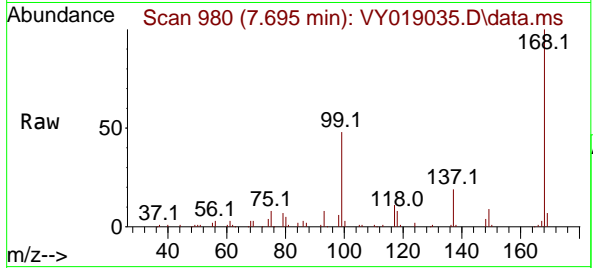




#1
 Pentafluorobenzene
 Concen: 50.000 ug/l
 RT: 7.695 min Scan# 91
 Delta R.T. -0.006 min
 Lab File: VY019035.D
 Acq: 13 Aug 2024 17:33

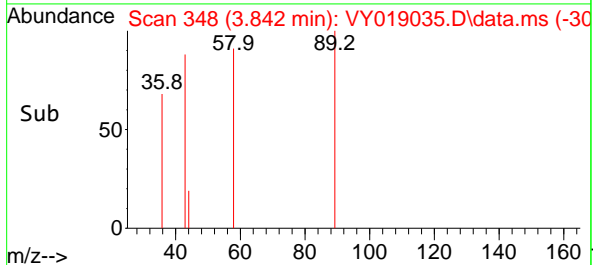
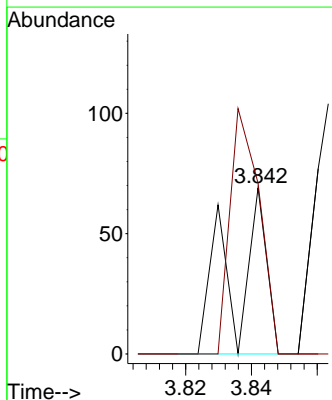
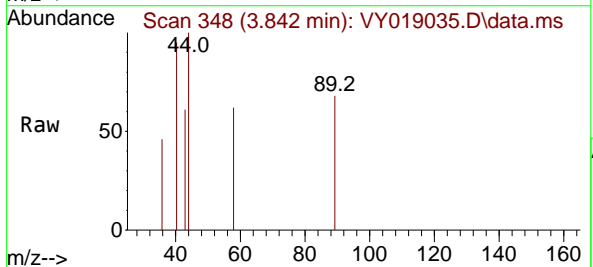
Instrument : MSVOA_Y
 ClientSampleId : OU4-CF-04-080624

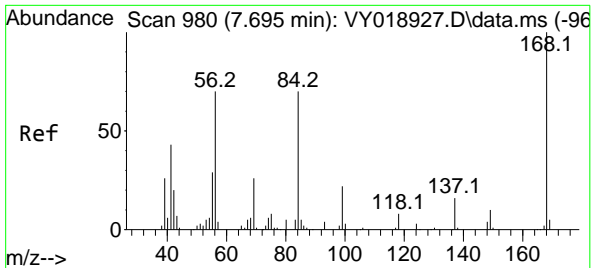
Tgt Ion:168 Resp: 55994
 Ion Ratio Lower Upper
 168 100
 99 48.0 39.1 58.7



#16
 Acetone
 Concen: 12.885 ug/l
 RT: 3.842 min Scan# 348
 Delta R.T. -0.012 min
 Lab File: VY019035.D
 Acq: 13 Aug 2024 17:33

Tgt Ion: 43 Resp: 48
 Ion Ratio Lower Upper
 43 100
 58 102.9 31.7 47.5#

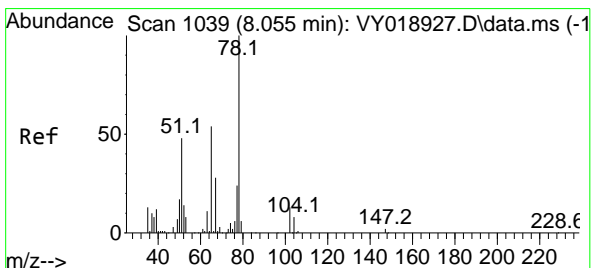
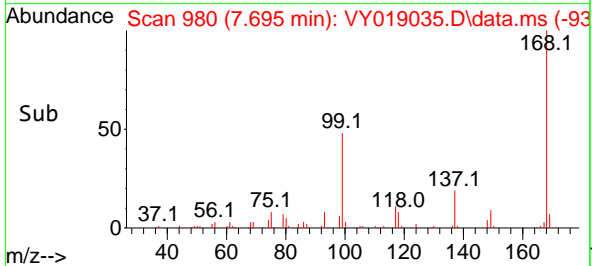
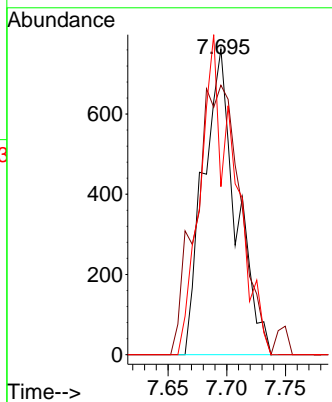
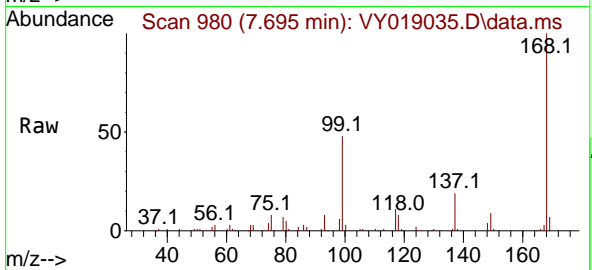




#31
 Cyclohexane
 Concen: Below Cal
 RT: 7.695 min Scan# 91
 Delta R.T. -0.000 min
 Lab File: VY019035.D
 Acq: 13 Aug 2024 17:33

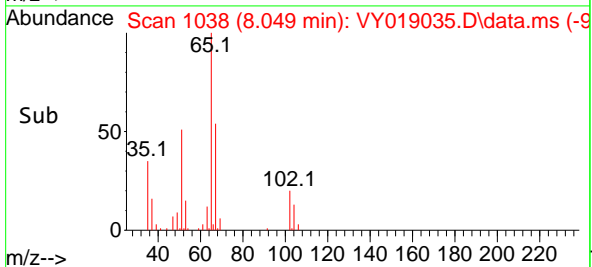
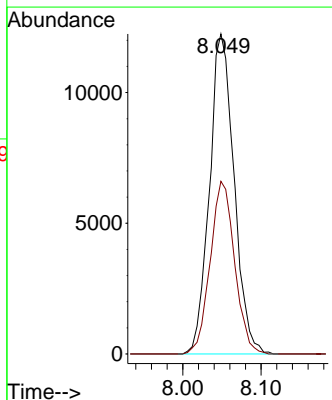
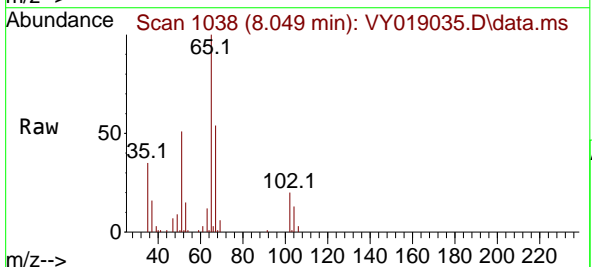
Instrument :
 MSVOA_Y
 ClientSampleId :
 OU4-CF-04-080624

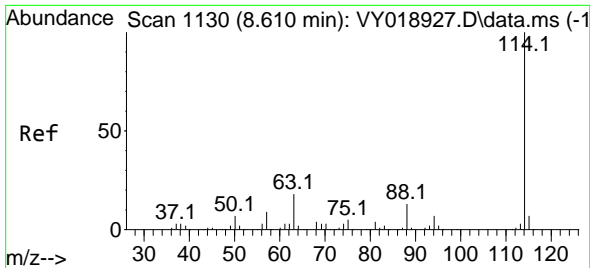
Tgt Ion: 56 Resp: 1479
 Ion Ratio Lower Upper
 56 100
 69 80.3 28.7 43.1#
 84 55.0 77.7 116.5#



#33
 1,2-Dichloroethane-d4
 Concen: 54.294 ug/l
 RT: 8.049 min Scan# 1038
 Delta R.T. -0.006 min
 Lab File: VY019035.D
 Acq: 13 Aug 2024 17:33

Tgt Ion: 65 Resp: 26692
 Ion Ratio Lower Upper
 65 100
 67 53.6 0.0 109.6

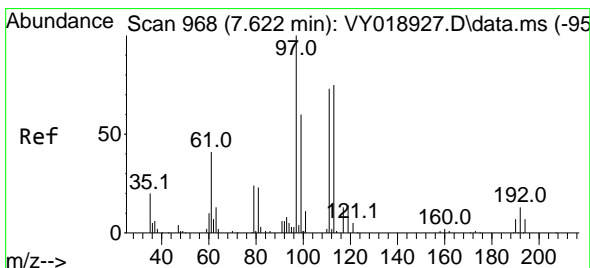
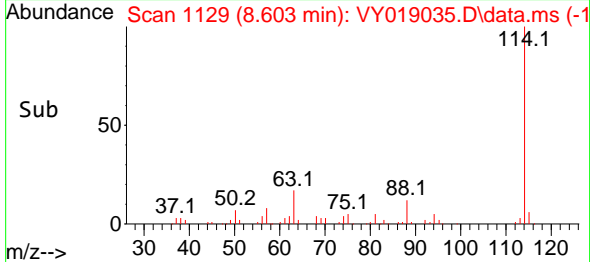
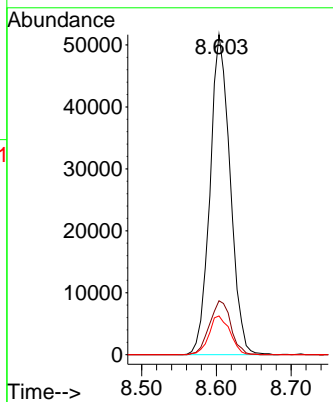
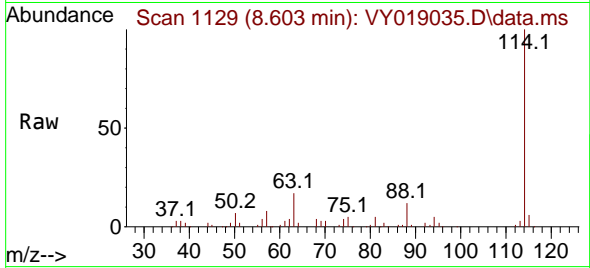




#34
 1,4-Difluorobenzene
 Concen: 50.000 ug/l
 RT: 8.603 min Scan# 1129
 Delta R.T. -0.006 min
 Lab File: VY019035.D
 Acq: 13 Aug 2024 17:33

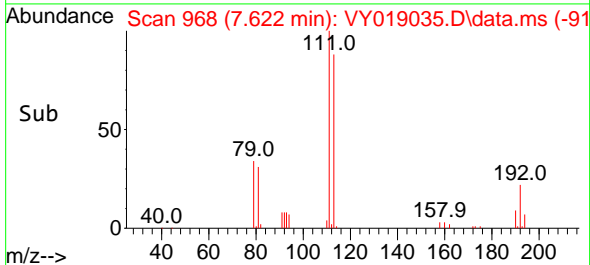
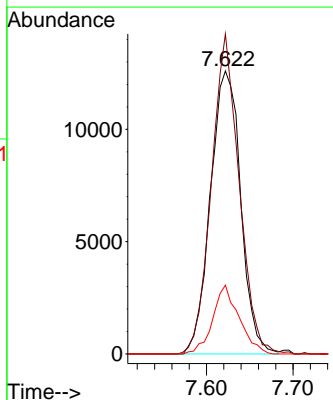
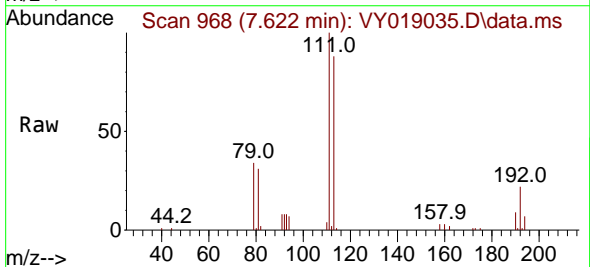
Instrument : MSVOA_Y
 ClientSampleId : OU4-CF-04-080624

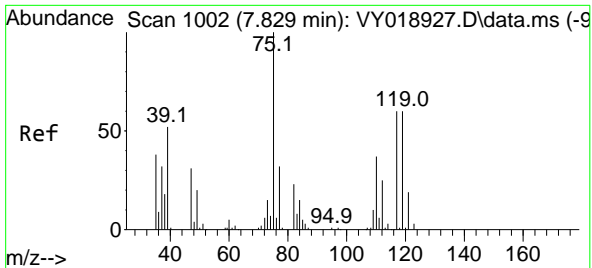
Tgt Ion	Resp	Lower	Upper
114	96710		
63	16.9	0.0	35.0
88	12.1	0.0	27.2



#35
 Dibromofluoromethane
 Concen: 49.524 ug/l
 RT: 7.622 min Scan# 968
 Delta R.T. -0.000 min
 Lab File: VY019035.D
 Acq: 13 Aug 2024 17:33

Tgt Ion	Resp	Lower	Upper
113	30590		
111	103.5	82.2	123.4
192	21.1	15.9	23.9

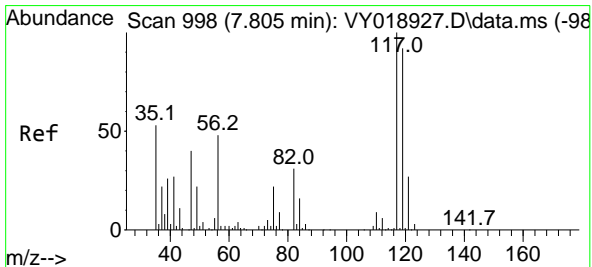
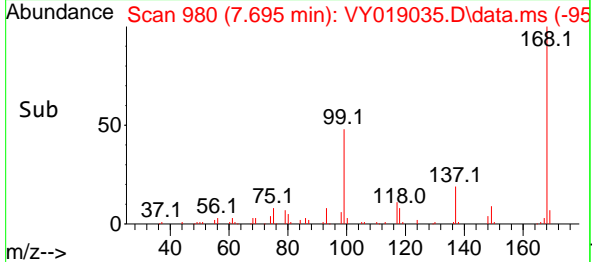
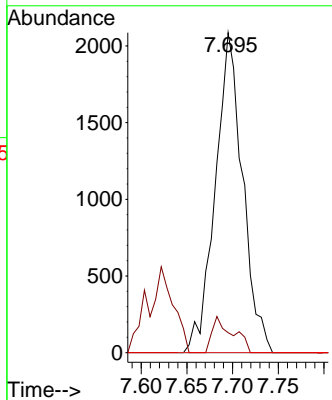
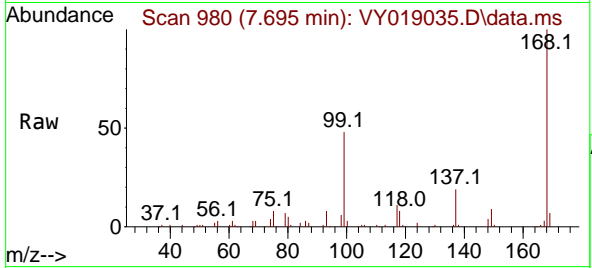




#36
 1,1-Dichloropropene
 Concen: 5.240 ug/l
 RT: 7.695 min Scan# 980
 Delta R.T. -0.134 min
 Lab File: VY019035.D
 Acq: 13 Aug 2024 17:33

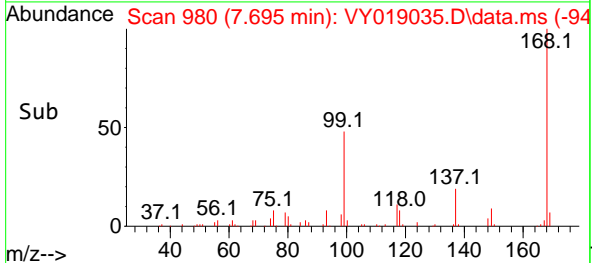
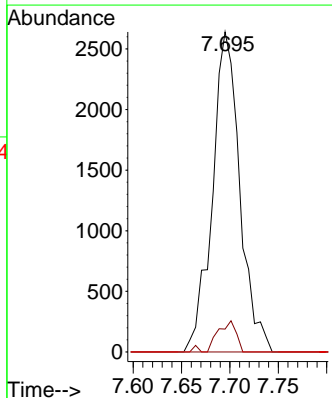
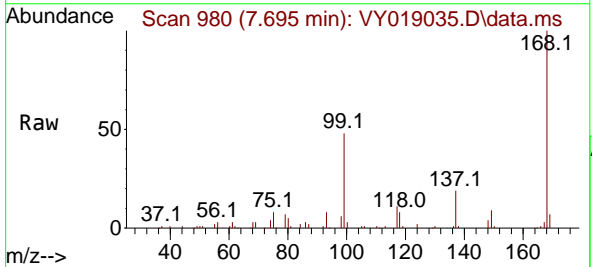
Instrument : MSVOA_Y
 ClientSampleId : OU4-CF-04-080624

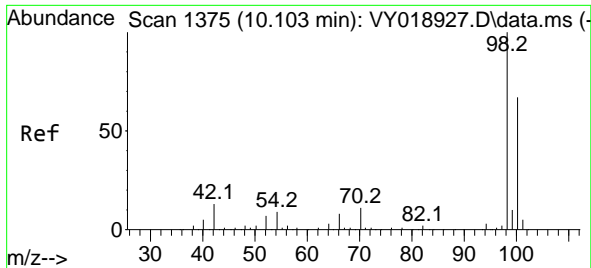
Tgt Ion	Resp	Lower	Upper
75	4345		
110	8.4	19.0	57.0#
77	0.0	25.3	37.9#



#38
 Carbon Tetrachloride
 Concen: 5.485 ug/l
 RT: 7.695 min Scan# 980
 Delta R.T. -0.110 min
 Lab File: VY019035.D
 Acq: 13 Aug 2024 17:33

Tgt Ion	Resp	Lower	Upper
117	5214		
119	7.2	75.8	113.6#
121	0.0	24.0	36.0#

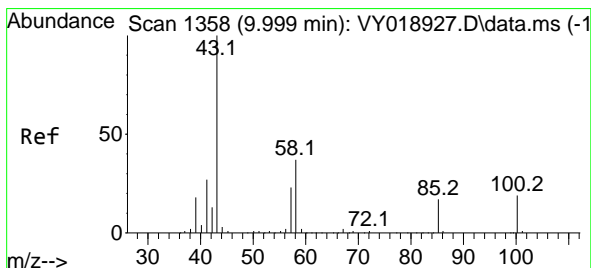
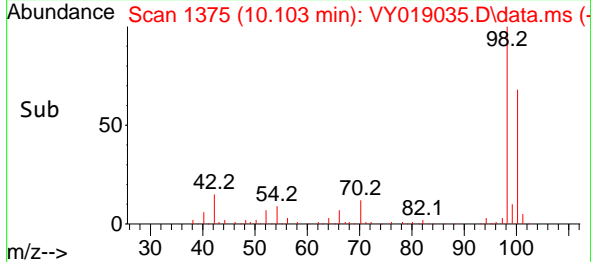
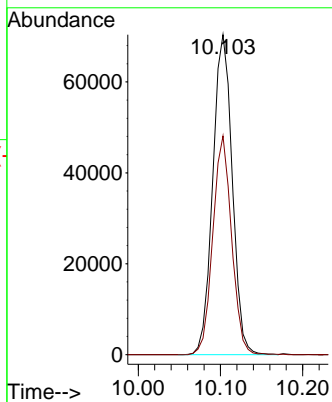
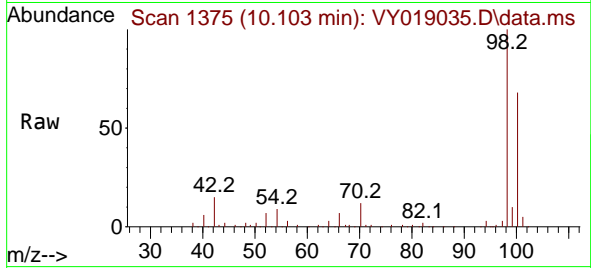




#50
 Toluene-d8
 Concen: 48.841 ug/l
 RT: 10.103 min Scan# 1375
 Delta R.T. -0.000 min
 Lab File: VY019035.D
 Acq: 13 Aug 2024 17:33

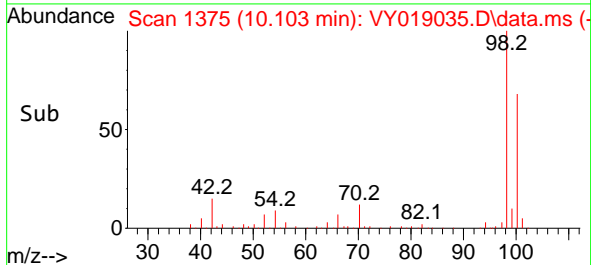
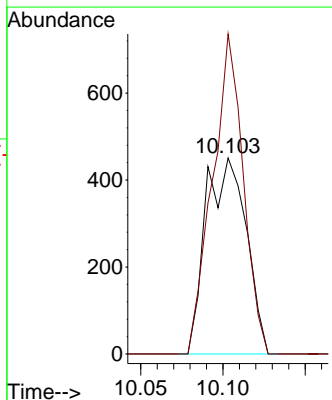
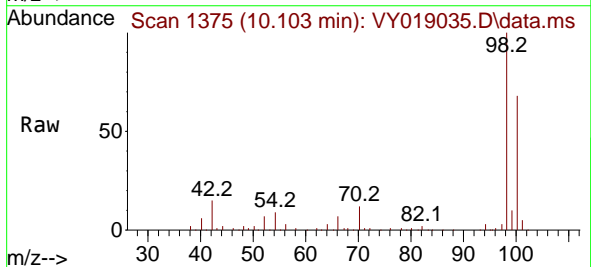
Instrument : MSVOA_Y
 ClientSampleId : OU4-CF-04-080624

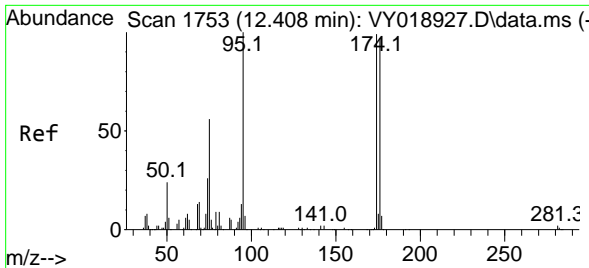
Tgt Ion: 98 Resp: 115875
 Ion Ratio Lower Upper
 98 100
 100 65.9 52.0 78.0



#51
 4-Methyl-2-Pentanone
 Concen: 1.945 ug/l
 RT: 10.103 min Scan# 1375
 Delta R.T. 0.104 min
 Lab File: VY019035.D
 Acq: 13 Aug 2024 17:33

Tgt Ion: 43 Resp: 773
 Ion Ratio Lower Upper
 43 100
 58 124.1 35.7 53.5#



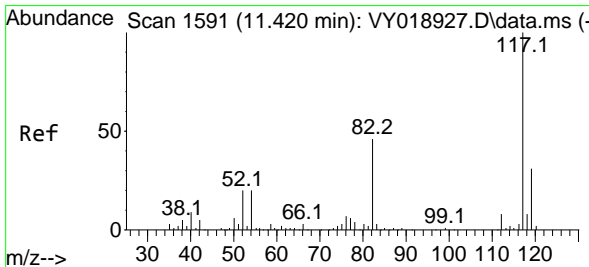
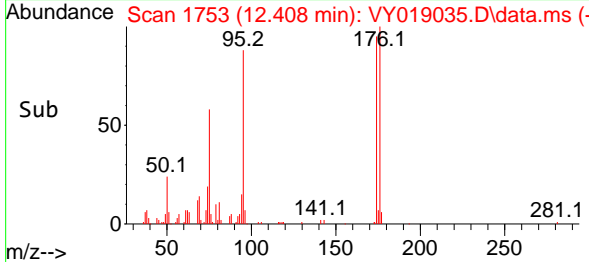
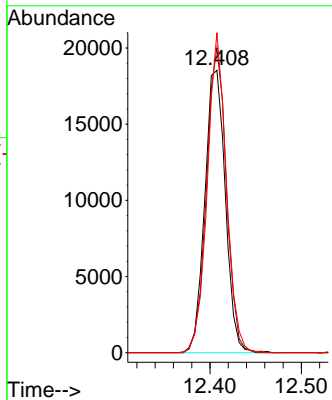
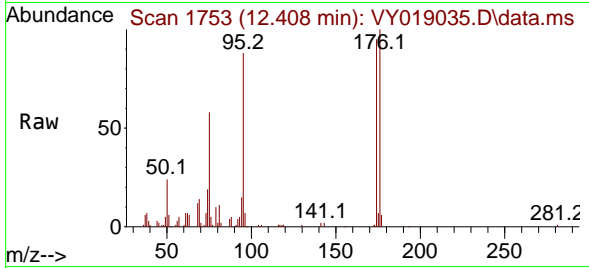


#62
 4-Bromofluorobenzene
 Concen: 41.209 ug/l
 RT: 12.408 min Scan# 11
 Delta R.T. -0.000 min
 Lab File: VY019035.D
 Acq: 13 Aug 2024 17:33

Instrument : MSVOA_Y
 ClientSampleId : OU4-CF-04-080624

Tgt Ion: 95 Resp: 29006

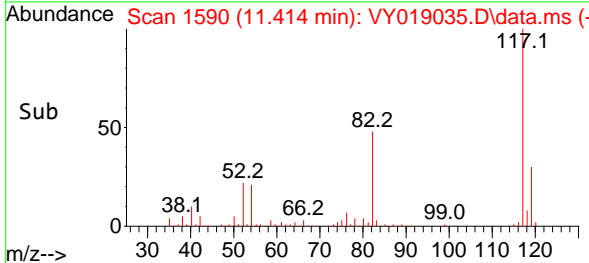
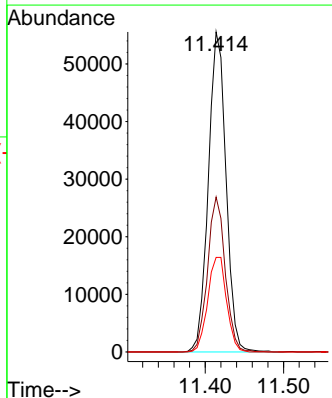
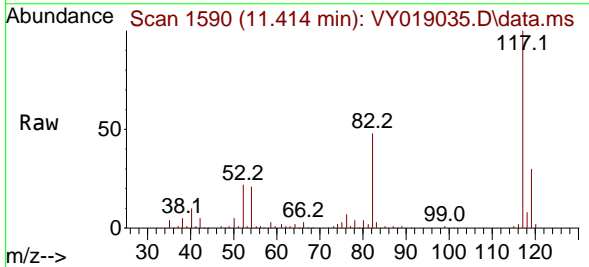
Ion	Ratio	Lower	Upper
95	100		
174	104.4	0.0	175.6
176	104.8	0.0	171.4

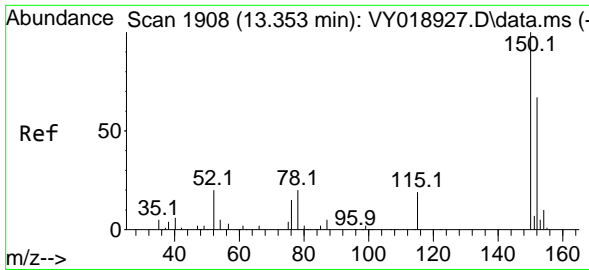


#63
 Chlorobenzene-d5
 Concen: 50.000 ug/l
 RT: 11.414 min Scan# 1590
 Delta R.T. -0.006 min
 Lab File: VY019035.D
 Acq: 13 Aug 2024 17:33

Tgt Ion: 117 Resp: 86961

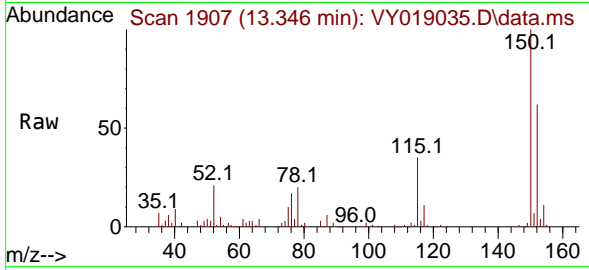
Ion	Ratio	Lower	Upper
117	100		
82	48.4	42.4	63.6
119	29.6	25.9	38.9



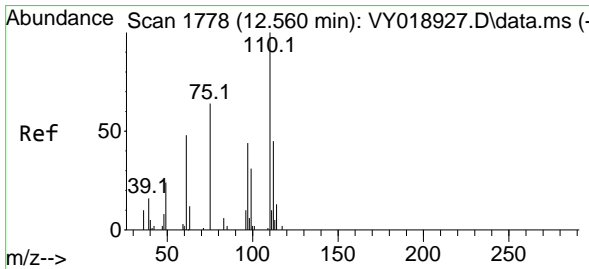
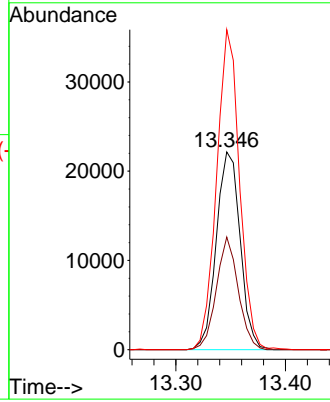
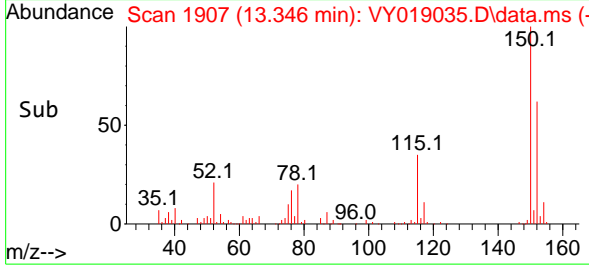


#72
 1,4-Dichlorobenzene-d4
 Concen: 50.000 ug/l
 RT: 13.346 min Scan# 1753
 Delta R.T. -0.006 min
 Lab File: VY019035.D
 Acq: 13 Aug 2024 17:33

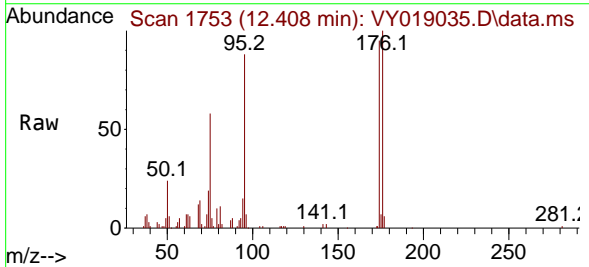
Instrument : MSVOA_Y
 ClientSampleId : OU4-CF-04-080624



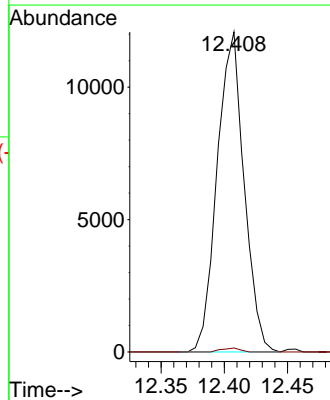
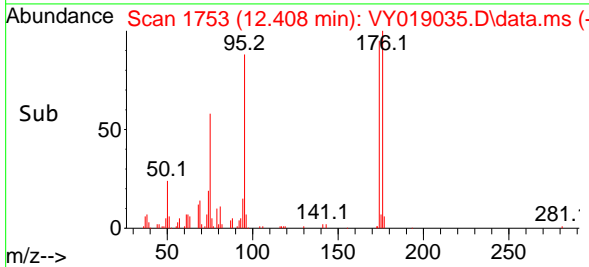
Tgt Ion:152 Resp: 33490
 Ion Ratio Lower Upper
 152 100
 115 52.4 28.2 84.7
 150 155.6 0.0 345.6

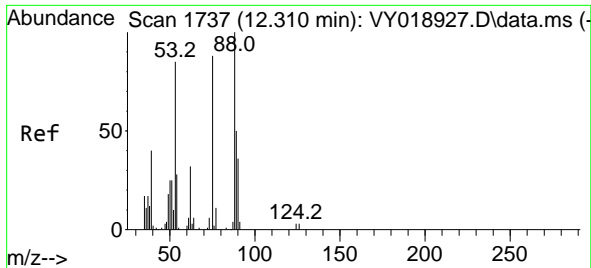


#76
 1,2,3-Trichloropropane
 Concen: 71.524 ug/l
 RT: 12.408 min Scan# 1753
 Delta R.T. -0.152 min
 Lab File: VY019035.D
 Acq: 13 Aug 2024 17:33



Tgt Ion: 75 Resp: 17845
 Ion Ratio Lower Upper
 75 100
 77 0.8 0.0 0.0#





#81
 trans-1,4-Dichloro-2-butene
 Concen: 147.383 ug/l
 RT: 12.408 min Scan# 1
 Delta R.T. 0.097 min
 Lab File: VY019035.D
 Acq: 13 Aug 2024 17:33

Instrument :
 MSVOA_Y
 ClientSampleId :
 OU4-CF-04-080624

Tgt Ion: 75 Resp: 17845
 Ion Ratio Lower Upper
 75 100
 53 0.0 66.8 100.2#
 89 0.0 35.8 53.6#

