

Data Path : Z:\voasrv\HPCHEM1\MSVOA_Y\Data\VY082124\
 Data File : VY019178.D
 Acq On : 21 Aug 2024 18:43
 Operator : SY/MD
 Sample : P3643-06
 Misc : 5.05g/5.0mL/MSVOA_Y/SOIL/B
 ALS Vial : 15 Sample Multiplier: 1

Instrument :
 MSVOA_Y
 ClientSampleId :
 917-J-SD-0.5-1-081524

Quant Time: Aug 22 01:17:26 2024
 Quant Method : Z:\voasrv\HPCHEM1\MSVOA_Y\methods\82Y081524S.M
 Quant Title : SW846 8260
 QLast Update : Fri Aug 16 05:10:30 2024
 Response via : Initial Calibration

Compound	R.T.	QIon	Response	Conc	Units	Dev(Min)

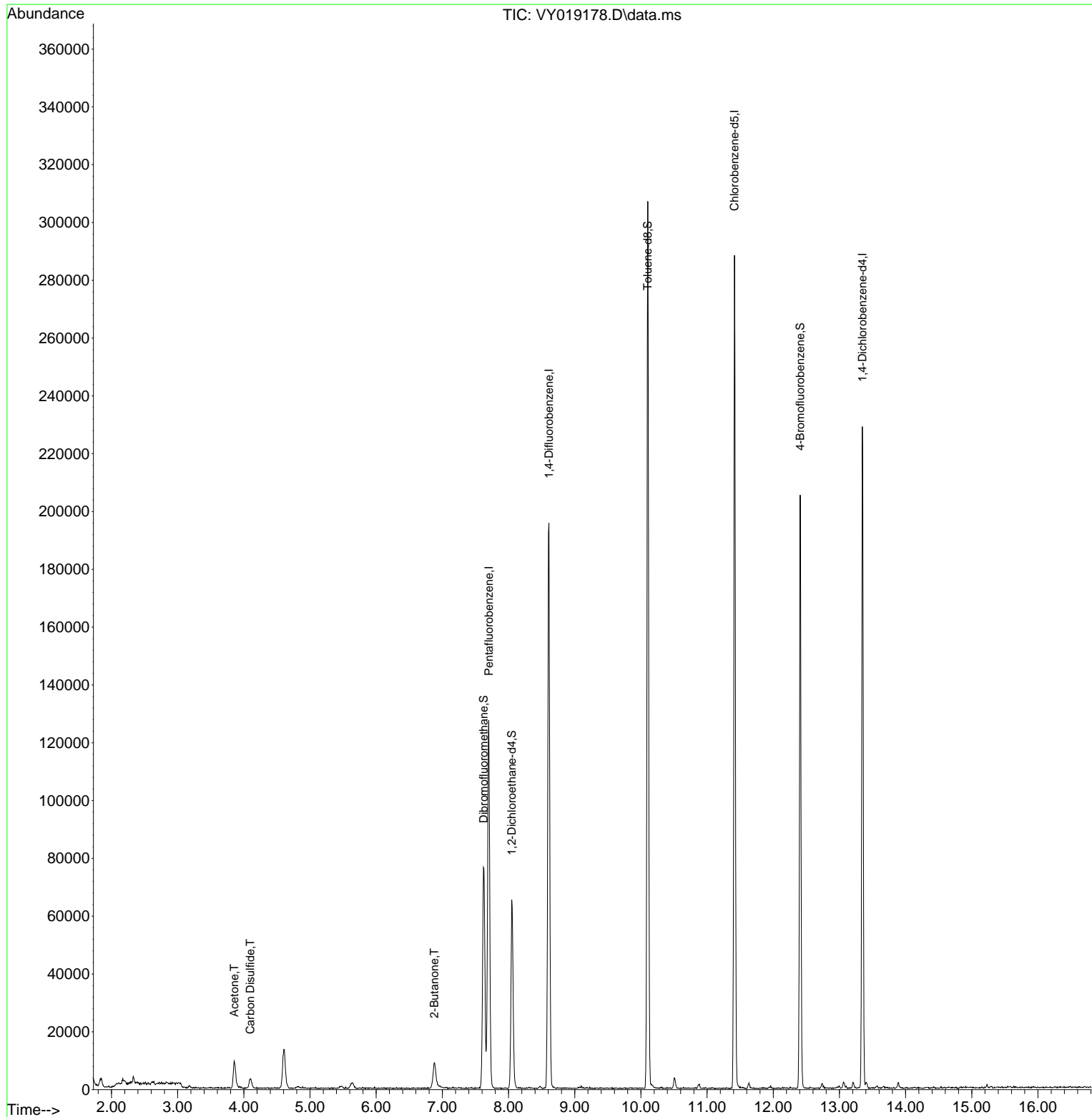
Internal Standards						
1) Pentafluorobenzene	7.701	168	96716	50.000	ug/l	0.00
34) 1,4-Difluorobenzene	8.609	114	174569	50.000	ug/l	0.00
63) Chlorobenzene-d5	11.414	117	151273	50.000	ug/l	0.00
72) 1,4-Dichlorobenzene-d4	13.346	152	57136	50.000	ug/l	0.00
System Monitoring Compounds						
33) 1,2-Dichloroethane-d4	8.049	65	52195	53.837	ug/l	0.00
Spiked Amount	50.000	Range	50 - 163	Recovery	=	107.680%
35) Dibromofluoromethane	7.622	113	54612	47.845	ug/l	0.00
Spiked Amount	50.000	Range	54 - 147	Recovery	=	95.700%
50) Toluene-d8	10.103	98	194871	47.441	ug/l	0.00
Spiked Amount	50.000	Range	58 - 134	Recovery	=	94.880%
62) 4-Bromofluorobenzene	12.408	95	59552	42.528	ug/l	0.00
Spiked Amount	50.000	Range	29 - 146	Recovery	=	85.060%
Target Compounds						
						Qvalue
16) Acetone	3.854	43	15672	87.165	ug/l	92
17) Carbon Disulfide	4.098	76	6475	2.380	ug/l #	91
25) 2-Butanone	6.878	43	5297	18.293	ug/l #	88

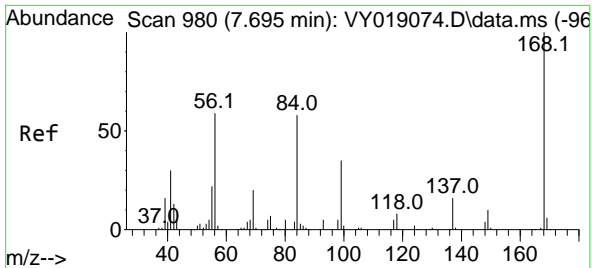
(#) = qualifier out of range (m) = manual integration (+) = signals summed

Data Path : Z:\voasrv\HPCHEM1\MSVOA_Y\Data\VY082124\
 Data File : VY019178.D
 Acq On : 21 Aug 2024 18:43
 Operator : SY/MD
 Sample : P3643-06
 Misc : 5.05g/5.0mL/MSVOA_Y/SOIL/B
 ALS Vial : 15 Sample Multiplier: 1

Instrument :
 MSVOA_Y
 ClientSampleId :
 917-J-SD-0.5-1-081524

Quant Time: Aug 22 01:17:26 2024
 Quant Method : Z:\voasrv\HPCHEM1\MSVOA_Y\methods\82Y081524S.M
 Quant Title : SW846 8260
 QLast Update : Fri Aug 16 05:10:30 2024
 Response via : Initial Calibration

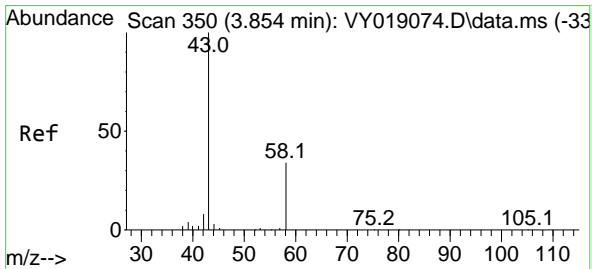
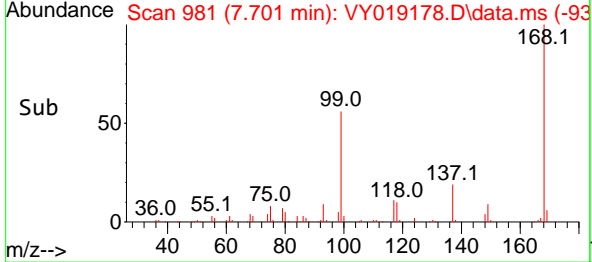
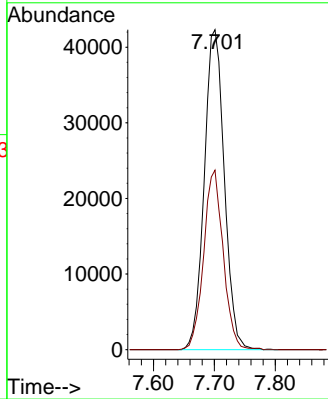
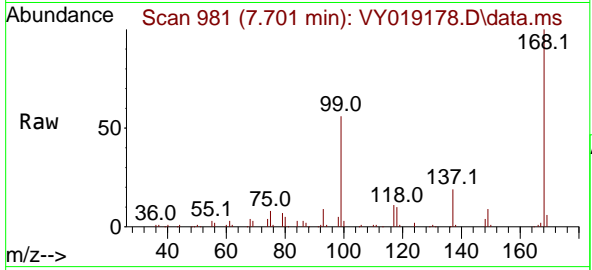




#1
 Pentafluorobenzene
 Concen: 50.000 ug/l
 RT: 7.701 min Scan# 99
 Delta R.T. 0.006 min
 Lab File: VY019178.D
 Acq: 21 Aug 2024 18:43

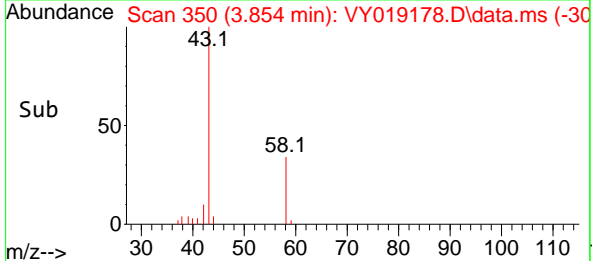
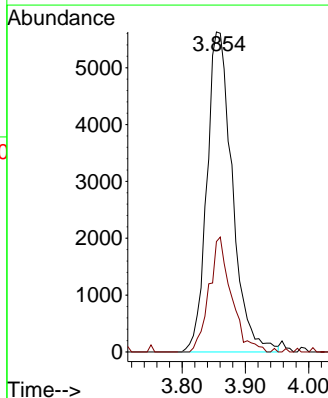
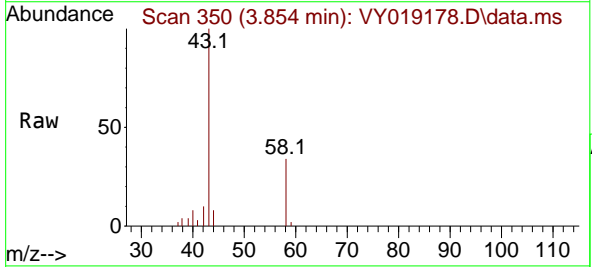
Instrument :
 MSVOA_Y
 ClientSampleId :
 917-J-SD-0.5-1-081524

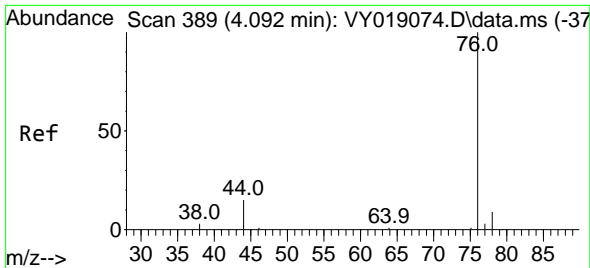
Tgt Ion:168 Resp: 96716
 Ion Ratio Lower Upper
 168 100
 99 56.1 39.1 58.7



#16
 Acetone
 Concen: 87.165 ug/l
 RT: 3.854 min Scan# 350
 Delta R.T. 0.000 min
 Lab File: VY019178.D
 Acq: 21 Aug 2024 18:43

Tgt Ion: 43 Resp: 15672
 Ion Ratio Lower Upper
 43 100
 58 34.5 31.7 47.5

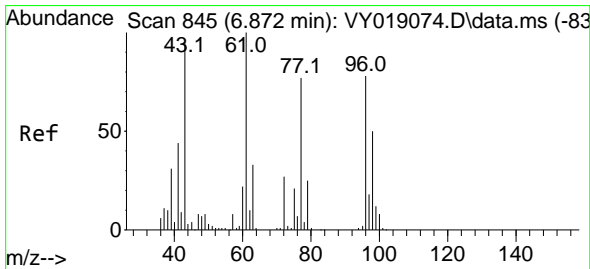
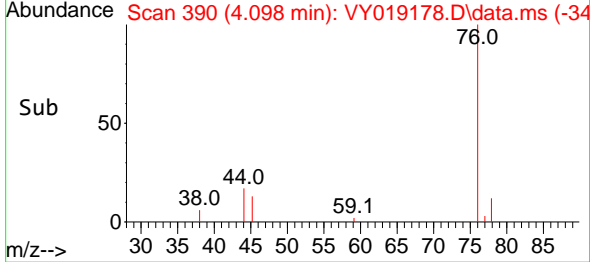
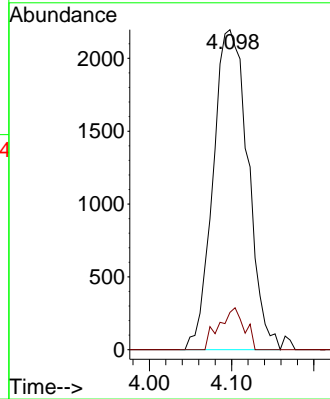
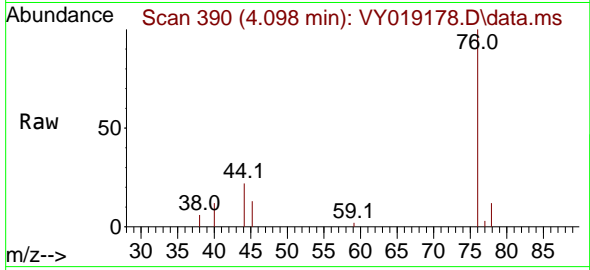




#17
 Carbon Disulfide
 Concen: 2.380 ug/l
 RT: 4.098 min Scan# 390
 Delta R.T. 0.006 min
 Lab File: VY019178.D
 Acq: 21 Aug 2024 18:43

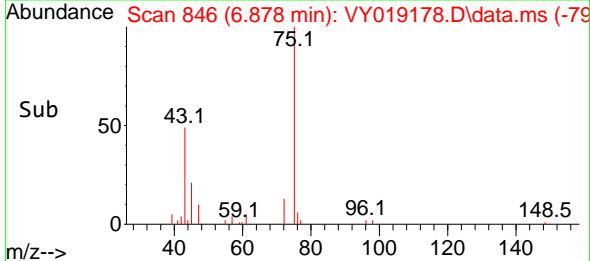
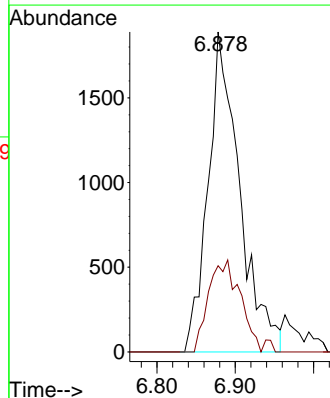
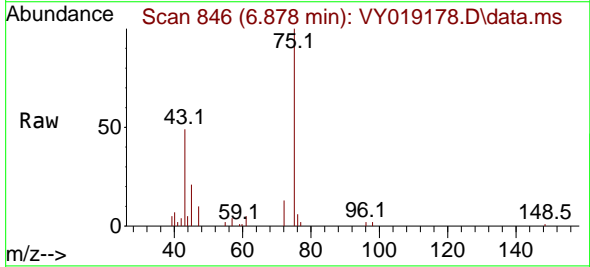
Instrument : MSVOA_Y
 ClientSampleId : 917-J-SD-0.5-1-081524

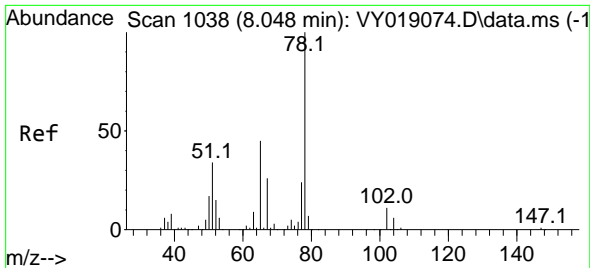
Tgt Ion: 76 Resp: 6475
 Ion Ratio Lower Upper
 76 100
 78 11.7 6.8 10.2#



#25
 2-Butanone
 Concen: 18.293 ug/l
 RT: 6.878 min Scan# 846
 Delta R.T. 0.006 min
 Lab File: VY019178.D
 Acq: 21 Aug 2024 18:43

Tgt Ion: 43 Resp: 5297
 Ion Ratio Lower Upper
 43 100
 72 26.9 27.3 40.9#

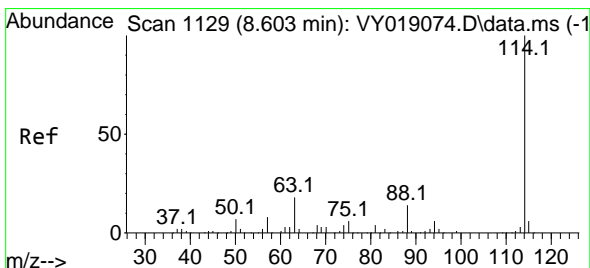
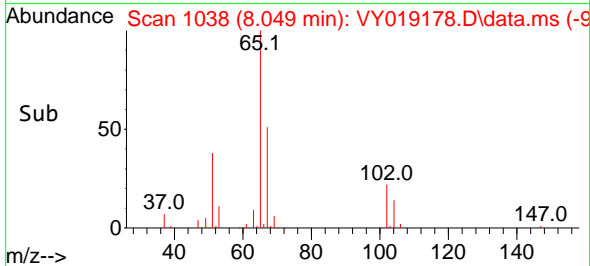
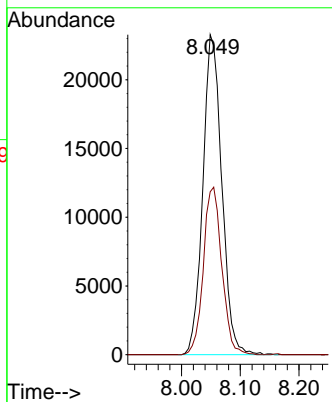
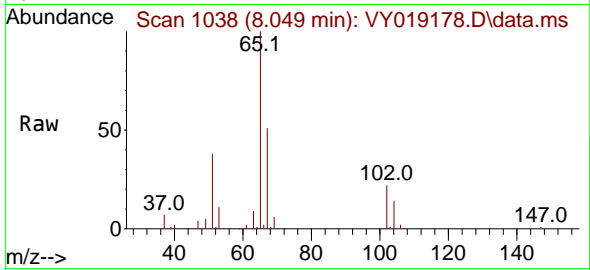




#33
 1,2-Dichloroethane-d4
 Concen: 53.837 ug/l
 RT: 8.049 min Scan# 1100
 Delta R.T. 0.000 min
 Lab File: VY019178.D
 Acq: 21 Aug 2024 18:43

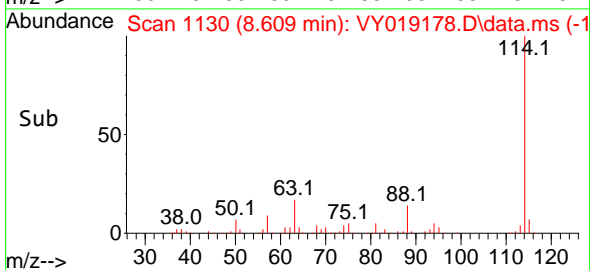
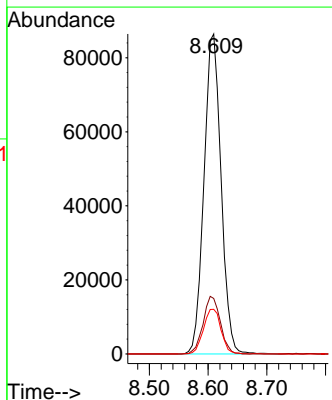
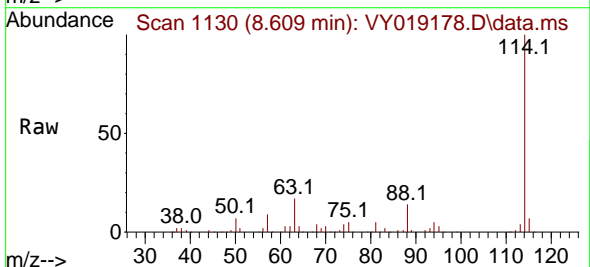
Instrument : MSVOA_Y
 ClientSampleId : 917-J-SD-0.5-1-081524

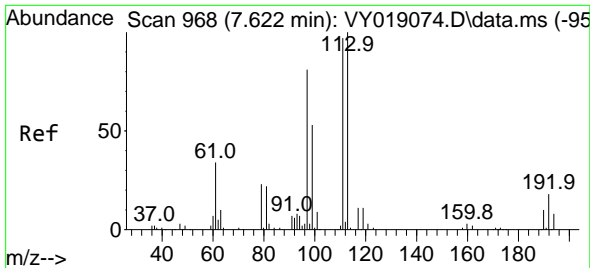
Tgt Ion: 65 Resp: 52195
 Ion Ratio Lower Upper
 65 100
 67 50.9 0.0 109.6



#34
 1,4-Difluorobenzene
 Concen: 50.000 ug/l
 RT: 8.609 min Scan# 1130
 Delta R.T. 0.006 min
 Lab File: VY019178.D
 Acq: 21 Aug 2024 18:43

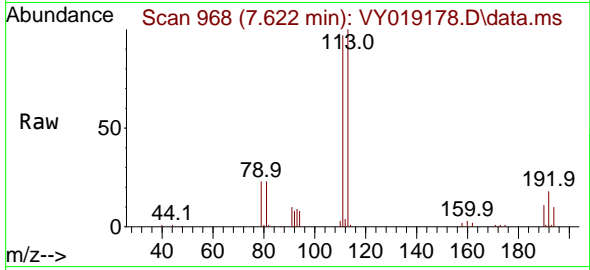
Tgt Ion:114 Resp: 174569
 Ion Ratio Lower Upper
 114 100
 63 17.4 0.0 35.0
 88 14.0 0.0 27.2



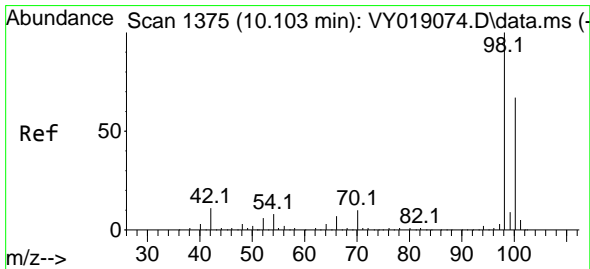
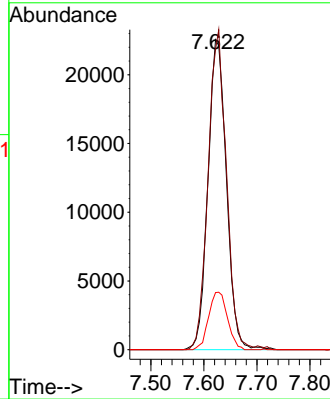
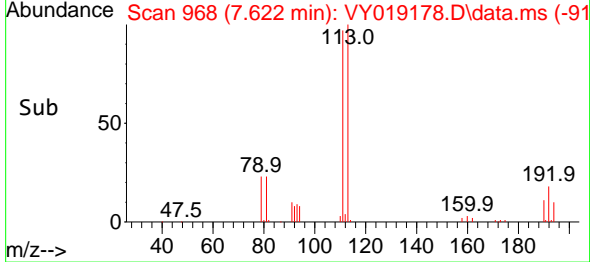


#35
 Dibromofluoromethane
 Concen: 47.845 ug/l
 RT: 7.622 min Scan# 90
 Delta R.T. 0.000 min
 Lab File: VY019178.D
 Acq: 21 Aug 2024 18:43

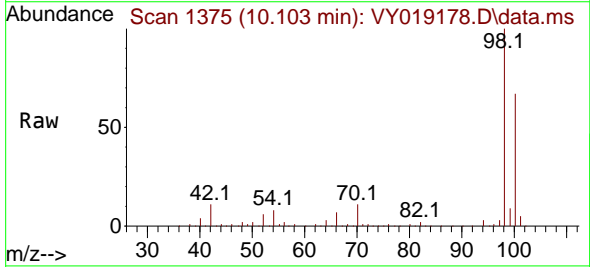
Instrument : MSVOA_Y
 ClientSampleId : 917-J-SD-0.5-1-081524



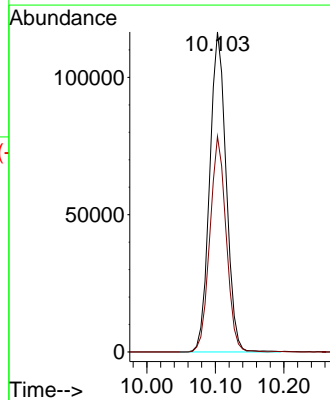
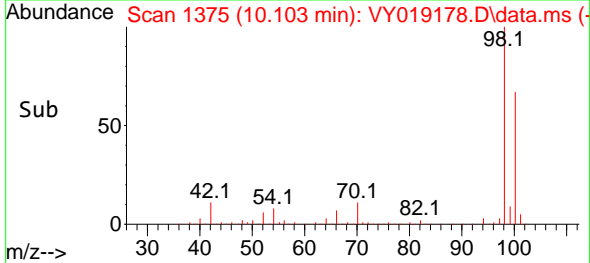
Tgt Ion: 113 Resp: 54612
 Ion Ratio Lower Upper
 113 100
 111 101.8 82.2 123.4
 192 18.9 15.9 23.9

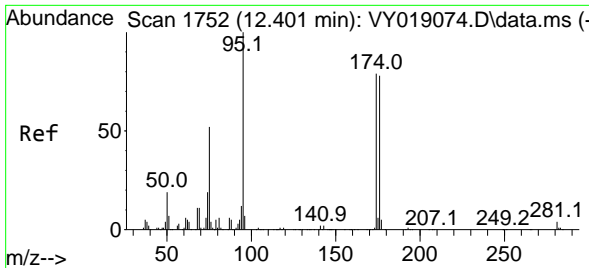


#50
 Toluene-d8
 Concen: 47.441 ug/l
 RT: 10.103 min Scan# 1375
 Delta R.T. 0.000 min
 Lab File: VY019178.D
 Acq: 21 Aug 2024 18:43



Tgt Ion: 98 Resp: 194871
 Ion Ratio Lower Upper
 98 100
 100 66.3 52.0 78.0



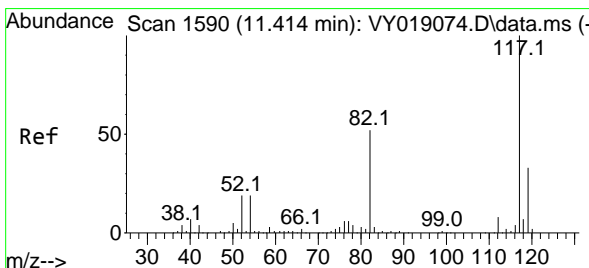
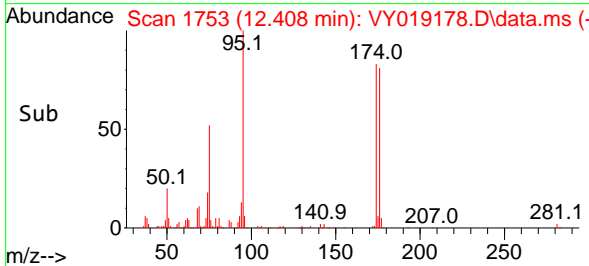
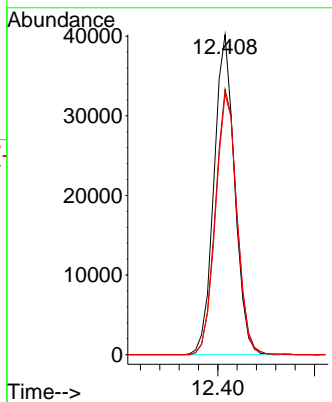
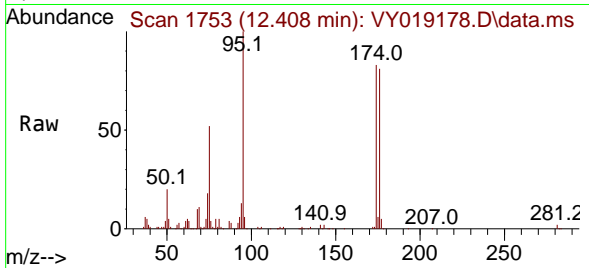


#62
 4-Bromofluorobenzene
 Concen: 42.528 ug/l
 RT: 12.408 min Scan# 11
 Delta R.T. 0.006 min
 Lab File: VY019178.D
 Acq: 21 Aug 2024 18:43

Instrument : MSVOA_Y
 ClientSampleId : 917-J-SD-0.5-1-081524

Tgt Ion: 95 Resp: 59552

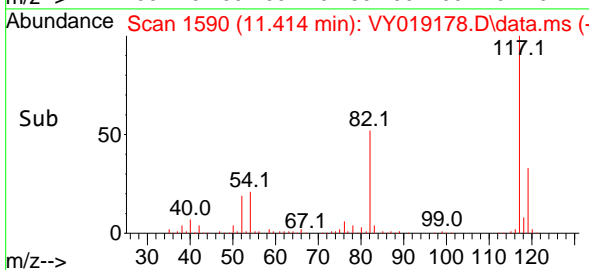
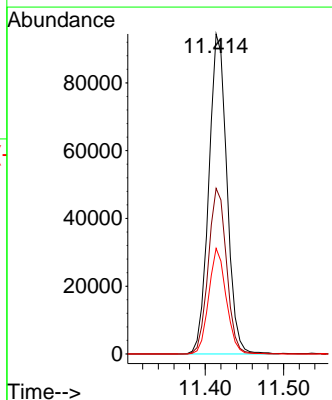
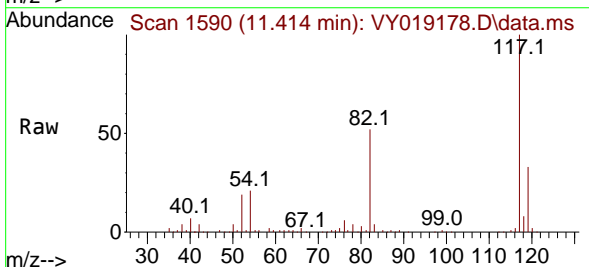
Ion	Ratio	Lower	Upper
95	100		
174	86.4	0.0	175.6
176	84.3	0.0	171.4

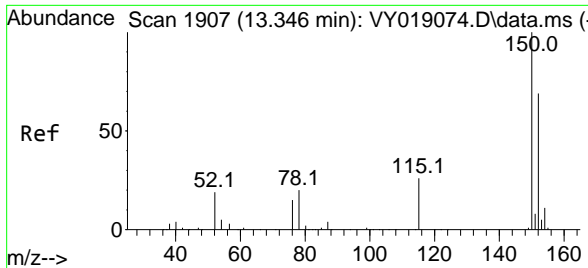


#63
 Chlorobenzene-d5
 Concen: 50.000 ug/l
 RT: 11.414 min Scan# 1590
 Delta R.T. 0.000 min
 Lab File: VY019178.D
 Acq: 21 Aug 2024 18:43

Tgt Ion: 117 Resp: 151273

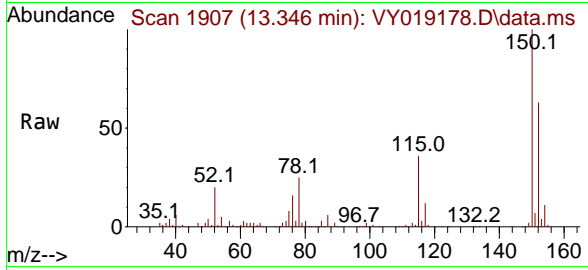
Ion	Ratio	Lower	Upper
117	100		
82	51.7	42.4	63.6
119	33.0	25.9	38.9





#72
 1,4-Dichlorobenzene-d4
 Concen: 50.000 ug/l
 RT: 13.346 min Scan# 1907
 Delta R.T. 0.000 min
 Lab File: VY019178.D
 Acq: 21 Aug 2024 18:43

Instrument : MSVOA_Y
 ClientSampleId : 917-J-SD-0.5-1-081524



Tgt Ion:152 Resp: 57136

Ion	Ratio	Lower	Upper
152	100		
115	56.6	28.2	84.7
150	159.5	0.0	345.6

