

Data Path : Z:\voasrv\HPCHEM1\MSVOA_Y\Data\VY082124\
 Data File : VY019178.D
 Acq On : 21 Aug 2024 18:43
 Operator : SY/MD
 Sample : P3643-06
 Misc : 5.05g/5.0mL/MSVOA_Y/SOIL/B
 ALS Vial : 15 Sample Multiplier: 1

Instrument :
 MSVOA_Y
 ClientSampleId :
 917-J-SD-0.5-1-081524

Integration Parameters: RTEINT.P

Integrator: RTE
 Smoothing : ON Filtering: 5
 Sampling : 1 Min Area: 3 % of largest Peak
 Start Thrs: 0.2 Max Peaks: 100
 Stop Thrs : 0 Peak Location: TOP

If leading or trailing edge < 100 prefer < Baseline drop else tangent >
 Peak separation: 5

Method : Z:\voasrv\HPCHEM1\MSVOA_Y\methods\82Y081524S.M
 Title : SW846 8260

Signal : TIC: VY019178.D\data.ms

peak #	R.T. min	first scan	max scan	last scan	PK TY	peak height	corr. area	corr. % max.	% of total
1	3.854	341	350	361	rBV	9428	24809	4.78%	0.896%
2	4.104	383	391	400	rVB3	3232	8926	1.72%	0.322%
3	4.604	462	473	486	rBV2	13528	41223	7.94%	1.489%
4	6.878	833	846	859	rBV3	8900	29761	5.73%	1.075%
5	7.622	959	968	974	rBV	76335	185107	35.67%	6.687%
6	7.701	974	981	991	rVB	127017	284986	54.91%	10.295%
7	8.049	1027	1038	1051	rBV	65352	147058	28.34%	5.312%
8	8.609	1121	1130	1140	rBV	195399	393324	75.79%	14.208%
9	10.103	1367	1375	1383	rBV	306953	518963	100.00%	18.747%
10	10.505	1434	1441	1448	rBV3	3684	7283	1.40%	0.263%
11	11.414	1583	1590	1603	rBV	288141	453909	87.46%	16.397%
12	12.408	1744	1753	1765	rBV	205245	322696	62.18%	11.657%
13	13.346	1900	1907	1914	rBV	228699	350273	67.49%	12.653%

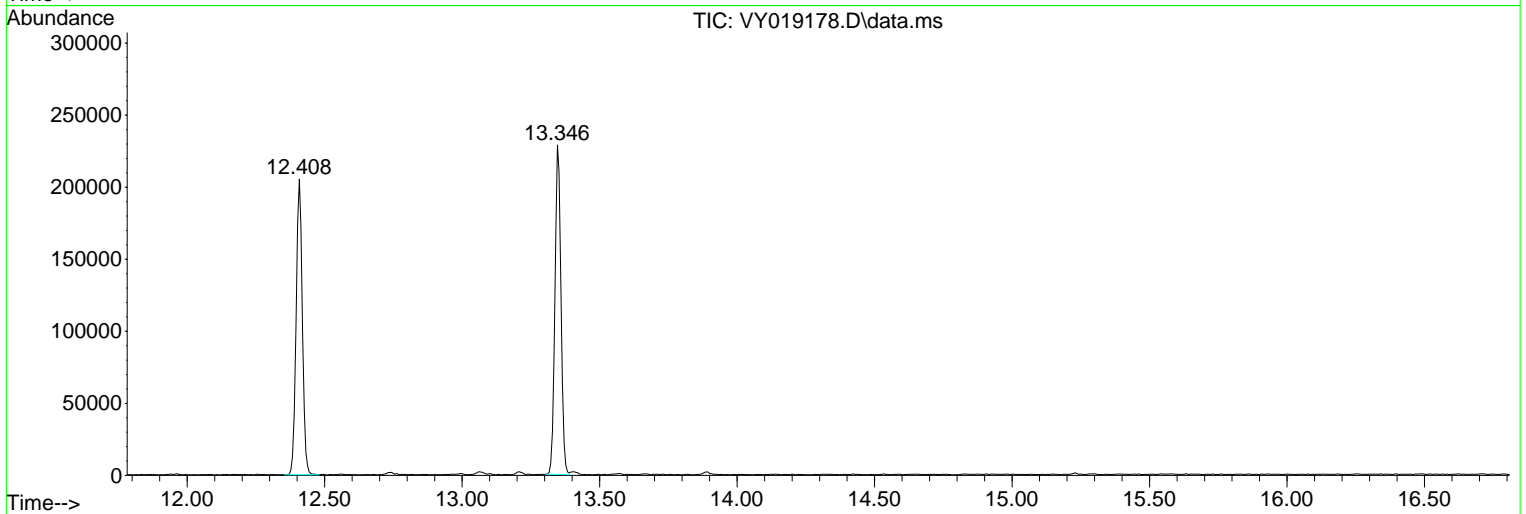
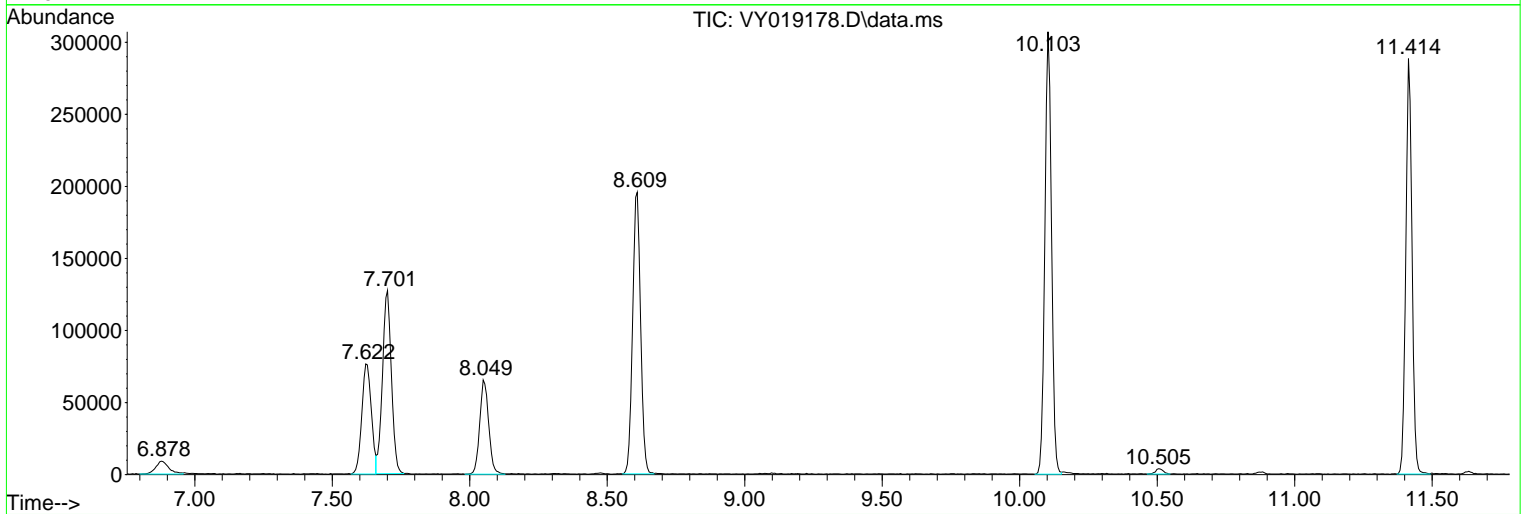
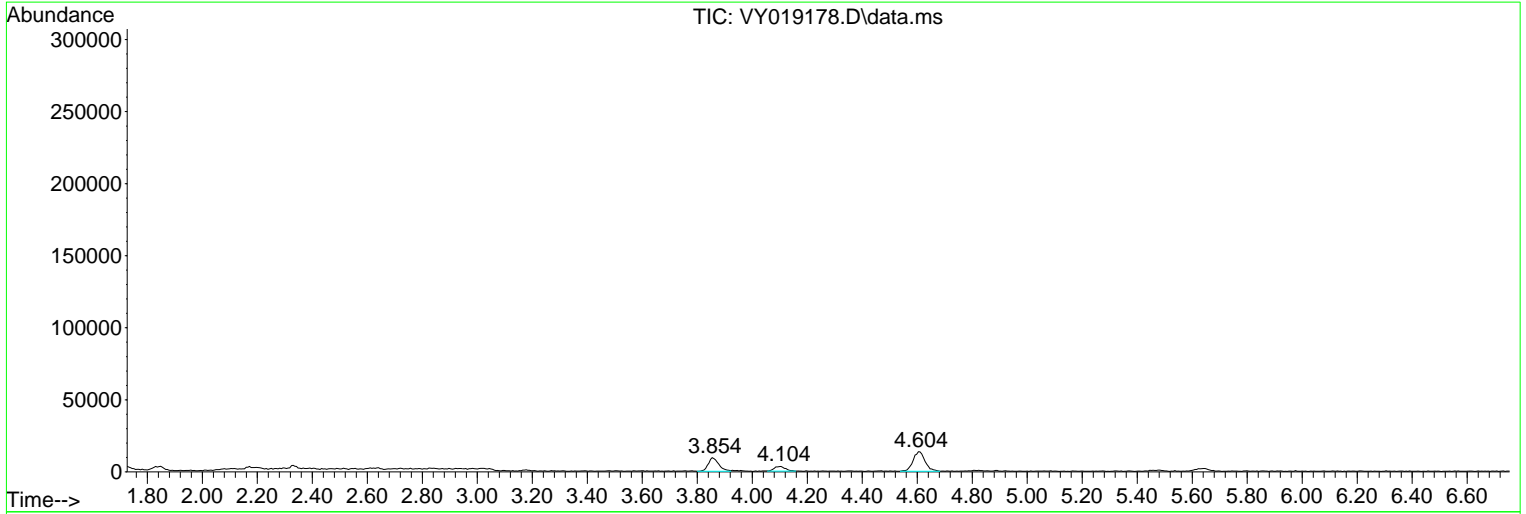
Sum of corrected areas: 2768318

Data Path : Z:\voasrv\HPCHEM1\MSVOA_Y\Data\VY082124\
 Data File : VY019178.D
 Acq On : 21 Aug 2024 18:43
 Operator : SY/MD
 Sample : P3643-06
 Misc : 5.05g/5.0mL/MSVOA_Y/SOIL/B
 ALS Vial : 15 Sample Multiplier: 1

Instrument :
 MSVOA_Y
ClientSampleId :
 917-J-SD-0.5-1-081524

Quant Method : Z:\voasrv\HPCHEM1\MSVOA_Y\methods\82Y081524S.M
 Quant Title : SW846 8260

TIC Library : C:\Database\NIST20.L
 TIC Integration Parameters: LSCINT.P



Library Search Compound Report

Data Path : Z:\voasrv\HPCHEM1\MSVOA_Y\Data\VY082124\
Data File : VY019178.D
Acq On : 21 Aug 2024 18:43
Operator : SY/MD
Sample : P3643-06
Misc : 5.05g/5.0mL/MSVOA_Y/SOIL/B
ALS Vial : 15 Sample Multiplier: 1

Instrument :
MSVOA_Y
ClientSampleId :
917-J-SD-0.5-1-081524

Quant Method : Z:\voasrv\HPCHEM1\MSVOA_Y\methods\82Y081524S.M
Quant Title : SW846 8260

TIC Library : C:\Database\NIST20.L
TIC Integration Parameters: LSCINT.P

No Library Search Compounds Detected

Data Path : Z:\voasrv\HPCHEM1\MSVOA_Y\Data\VY082124\
Data File : VY019178.D
Acq On : 21 Aug 2024 18:43
Operator : SY/MD
Sample : P3643-06
Misc : 5.05g/5.0mL/MSVOA_Y/SOIL/B
ALS Vial : 15 Sample Multiplier: 1

Instrument :
MSVOA_Y
ClientSampleId :
917-J-SD-0.5-1-081524

Quant Method : Z:\voasrv\HPCHEM1\MSVOA_Y\methods\82Y081524S.M
Quant Title : SW846 8260

TIC Library : C:\Database\NIST20.L
TIC Integration Parameters: LSCINT.P

TIC Top Hit name	RT	EstConc	Units	Response	--Internal Standard--			
					#	RT	Resp	Conc
