

Data Path : Z:\voasrv\HPCHEM1\MSVOA\_Y\Data\VY082824\  
 Data File : VY019326.D  
 Acq On : 28 Aug 2024 13:27  
 Operator : SY/MD  
 Sample : VY0828SBL01  
 Misc : 5.00g/5.0mL/MSVOA\_Y/SOIL  
 ALS Vial : 4 Sample Multiplier: 1

Instrument :  
 MSVOA\_Y  
 ClientSampleId :

Quant Time: Aug 29 01:31:44 2024  
 Quant Method : Z:\voasrv\HPCHEM1\MSVOA\_Y\methods\82Y081524S.M  
 Quant Title : SW846 8260  
 QLast Update : Fri Aug 16 05:10:30 2024  
 Response via : Initial Calibration

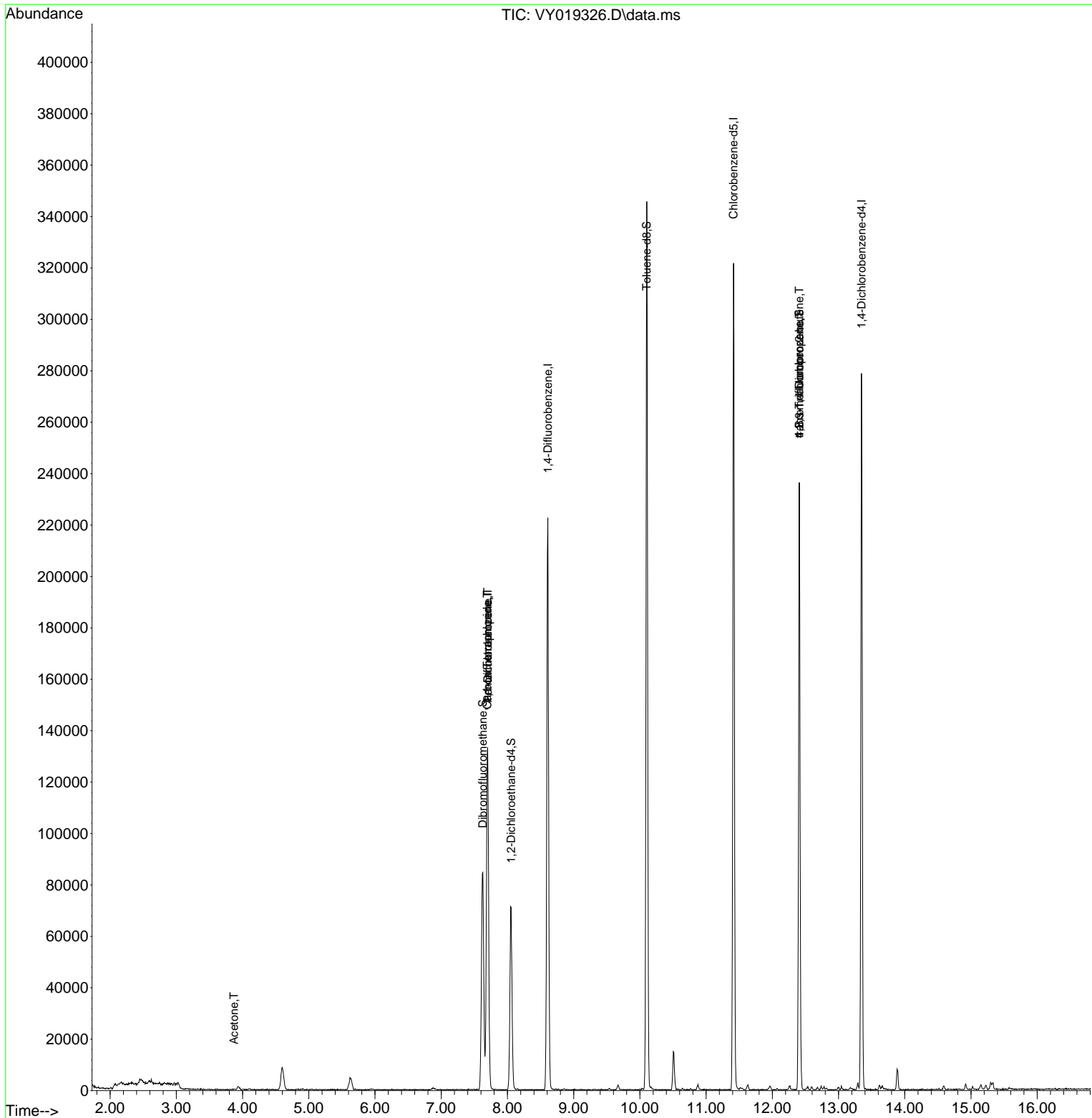
Compound	R.T.	QIon	Response	Conc	Units	Dev(Min)
-----						
Internal Standards						
1) Pentafluorobenzene	7.701	168	109356	50.000	ug/l	0.00
34) 1,4-Difluorobenzene	8.609	114	191693	50.000	ug/l	0.00
63) Chlorobenzene-d5	11.414	117	178659	50.000	ug/l	0.00
72) 1,4-Dichlorobenzene-d4	13.346	152	69188	50.000	ug/l	0.00
System Monitoring Compounds						
33) 1,2-Dichloroethane-d4	8.055	65	53216	48.546	ug/l	0.00
Spiked Amount	50.000	Range	50 - 163	Recovery	=	97.100%
35) Dibromofluoromethane	7.628	113	61374	48.966	ug/l	0.00
Spiked Amount	50.000	Range	54 - 147	Recovery	=	97.940%
50) Toluene-d8	10.103	98	218530	48.448	ug/l	0.00
Spiked Amount	50.000	Range	58 - 134	Recovery	=	96.900%
62) 4-Bromofluorobenzene	12.407	95	66852	43.477	ug/l	0.00
Spiked Amount	50.000	Range	29 - 146	Recovery	=	86.960%
Target Compounds						
					Qvalue	
5) Bromomethane	2.598	94	576	Below Cal	#	66
6) Chloroethane	2.647	64	22	Below Cal	#	42
11) Tert butyl alcohol	4.811	59	70	Below Cal	#	88
16) Acetone	3.872	43	397	1.953	ug/l #	36
20) Methylene Chloride	4.598	84	6617	Below Cal		89
31) Cyclohexane	7.689	56	2148	Below Cal	#	29
36) 1,1-Dichloropropene	7.701	75	7882	4.580	ug/l #	51
38) Carbon Tetrachloride	7.695	117	10268	5.148	ug/l #	16
76) 1,2,3-Trichloropropane	12.407	75	35963	52.707	ug/l #	100
81) trans-1,4-Dichloro-2-b...	12.407	75	35963	130.169	ug/l #	16
-----						

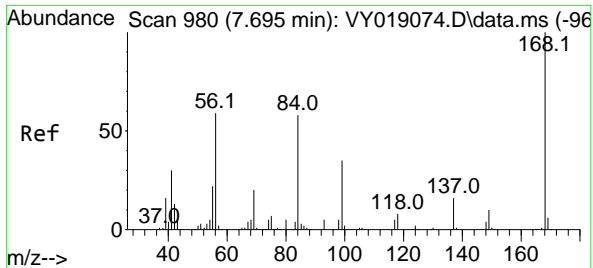
(#) = qualifier out of range (m) = manual integration (+) = signals summed

Data Path : Z:\voasrv\HPCHEM1\MSVOA\_Y\Data\VY082824\  
 Data File : VY019326.D  
 Acq On : 28 Aug 2024 13:27  
 Operator : SY/MD  
 Sample : VY0828SBL01  
 Misc : 5.00g/5.0mL/MSVOA\_Y/SOIL  
 ALS Vial : 4 Sample Multiplier: 1

Instrument :  
 MSVOA\_Y  
 ClientSampleId :

Quant Time: Aug 29 01:31:44 2024  
 Quant Method : Z:\voasrv\HPCHEM1\MSVOA\_Y\methods\82Y081524S.M  
 Quant Title : SW846 8260  
 QLast Update : Fri Aug 16 05:10:30 2024  
 Response via : Initial Calibration

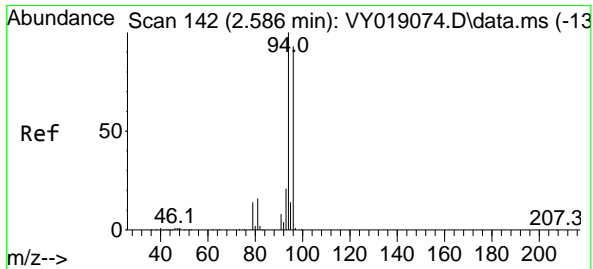
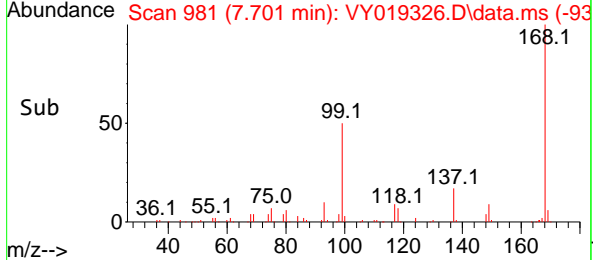
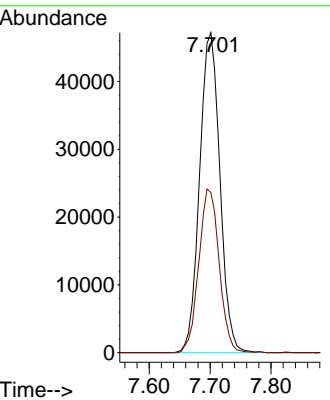
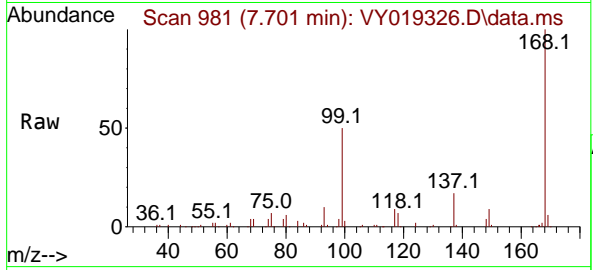




#1  
 Pentafluorobenzene  
 Concen: 50.000 ug/l  
 RT: 7.701 min Scan# 99  
 Delta R.T. 0.006 min  
 Lab File: VY019326.D  
 Acq: 28 Aug 2024 13:27

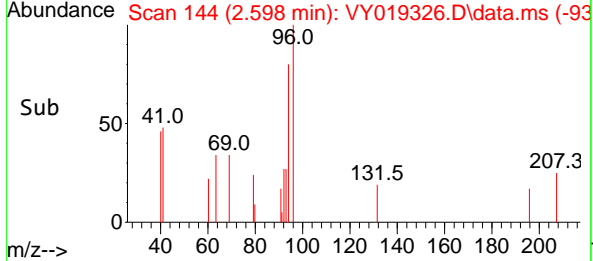
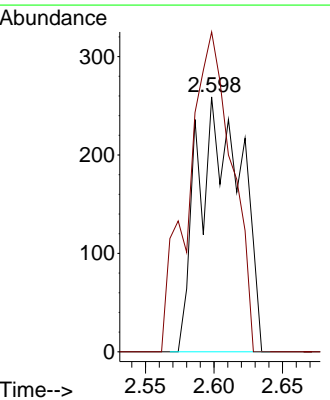
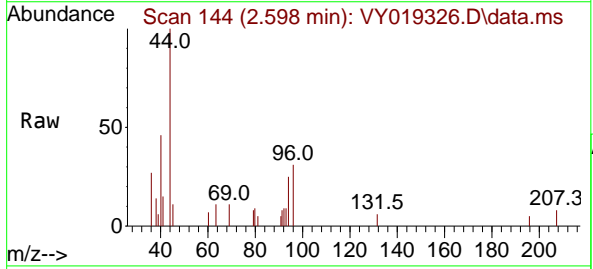
Instrument :  
 MSVOA\_Y  
 ClientSampleId :

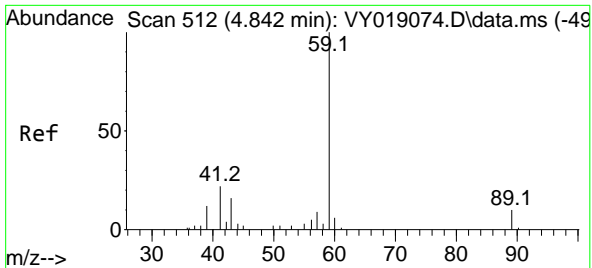
Tgt Ion:168 Resp: 109356  
 Ion Ratio Lower Upper  
 168 100  
 99 50.0 39.1 58.7



#5  
 Bromomethane  
 Concen: Below Cal  
 RT: 2.598 min Scan# 144  
 Delta R.T. 0.012 min  
 Lab File: VY019326.D  
 Acq: 28 Aug 2024 13:27

Tgt Ion: 94 Resp: 576  
 Ion Ratio Lower Upper  
 94 100  
 96 125.5 74.1 111.1#

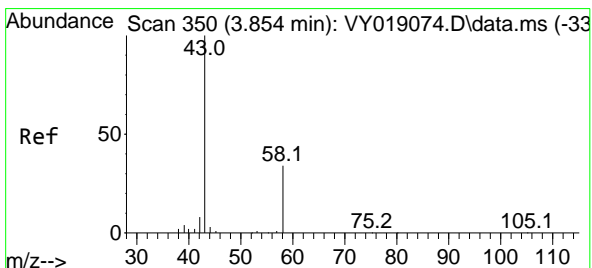
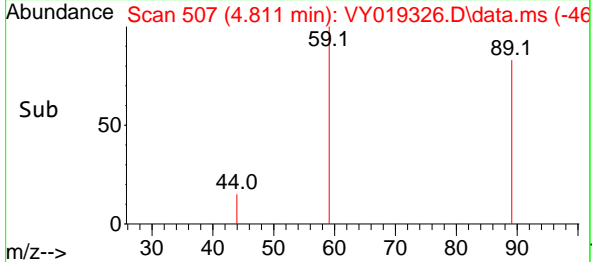
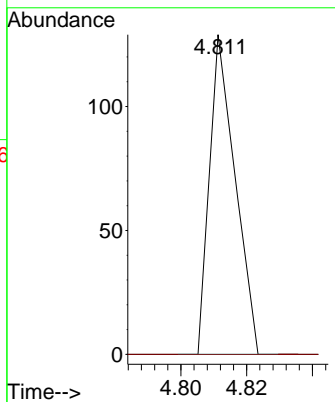
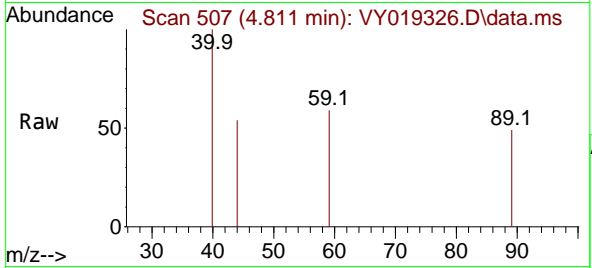




#11  
 Tert butyl alcohol  
 Concen: Below Cal  
 RT: 4.811 min Scan# 50  
 Delta R.T. -0.031 min  
 Lab File: VY019326.D  
 Acq: 28 Aug 2024 13:27

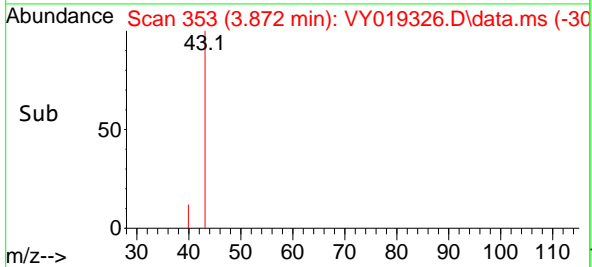
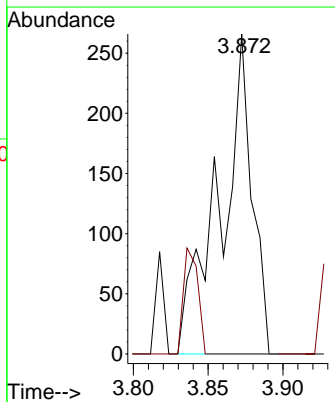
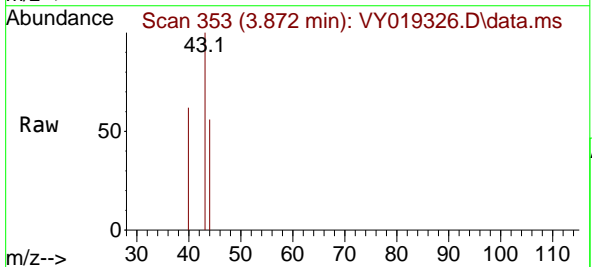
Instrument :  
 MSVOA\_Y  
 ClientSampleId :

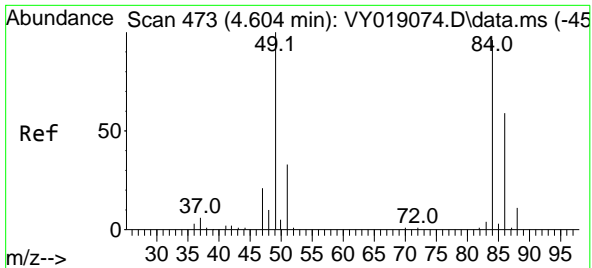
Tgt Ion: 59 Resp: 70  
 Ion Ratio Lower Upper  
 59 100  
 57 0.0 3.0 4.6#



#16  
 Acetone  
 Concen: 1.953 ug/l  
 RT: 3.872 min Scan# 353  
 Delta R.T. 0.018 min  
 Lab File: VY019326.D  
 Acq: 28 Aug 2024 13:27

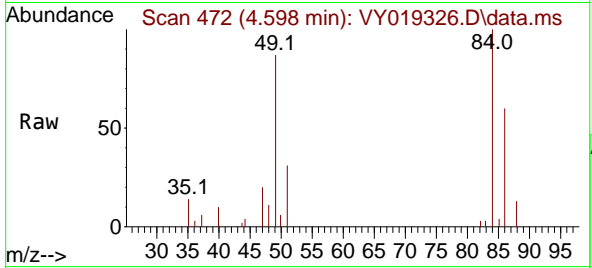
Tgt Ion: 43 Resp: 397  
 Ion Ratio Lower Upper  
 43 100  
 58 0.0 31.7 47.5#





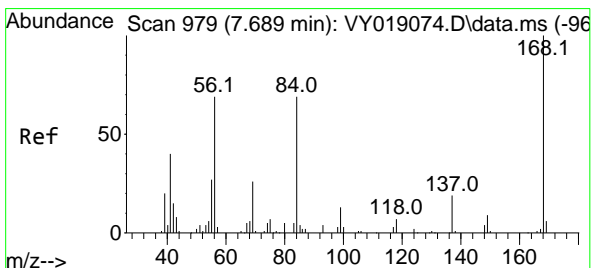
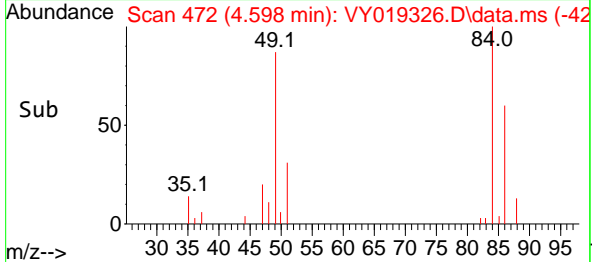
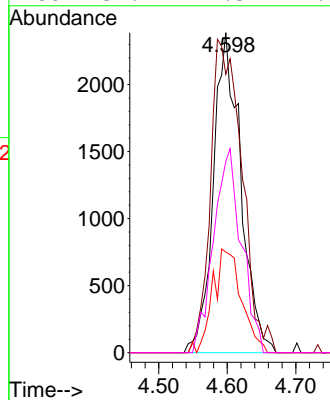
#20  
Methylene Chloride  
Concen: Below Cal  
RT: 4.598 min Scan# 41  
Delta R.T. -0.006 min  
Lab File: VY019326.D  
Acq: 28 Aug 2024 13:27

Instrument :  
MSVOA\_Y  
ClientSampleId :



Tgt Ion: 84 Resp: 6617

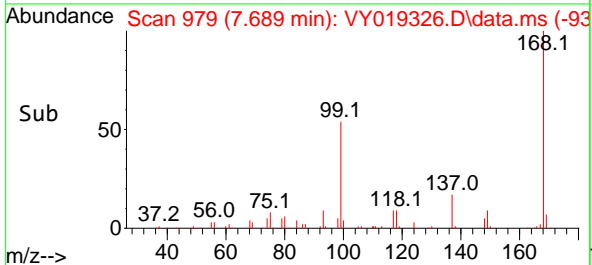
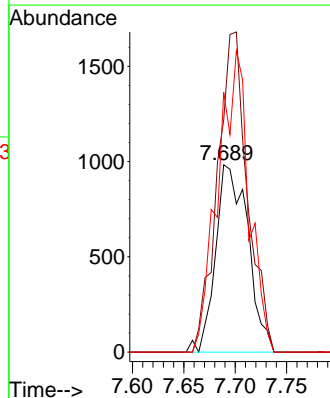
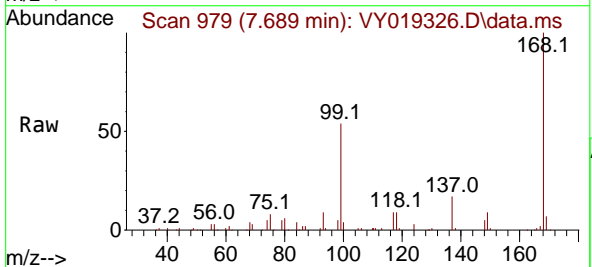
Ion	Ratio	Lower	Upper
84	100		
49	87.0	84.4	126.6
51	31.5	26.0	39.0
86	59.7	49.5	74.3

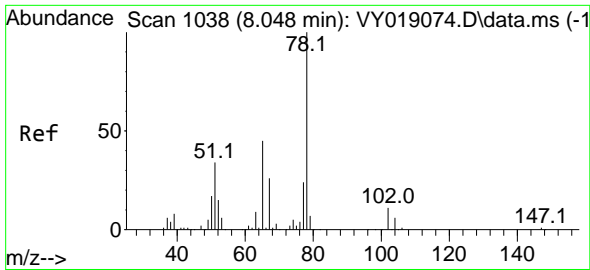


#31  
Cyclohexane  
Concen: Below Cal  
RT: 7.689 min Scan# 979  
Delta R.T. -0.000 min  
Lab File: VY019326.D  
Acq: 28 Aug 2024 13:27

Tgt Ion: 56 Resp: 2148

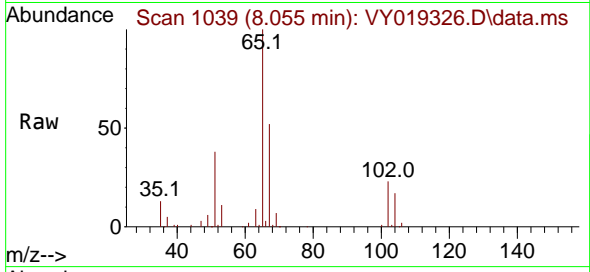
Ion	Ratio	Lower	Upper
56	100		
69	124.0	28.7	43.1#
84	138.5	77.7	116.5#



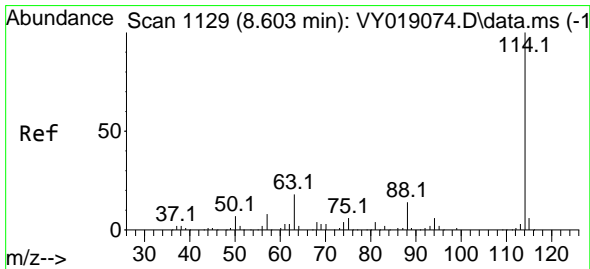
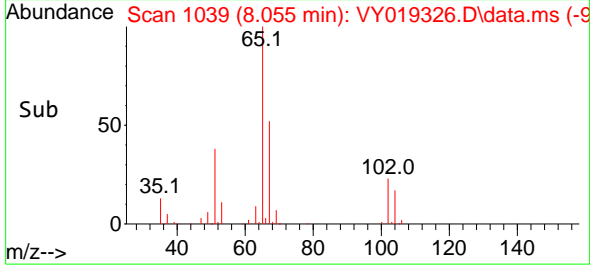
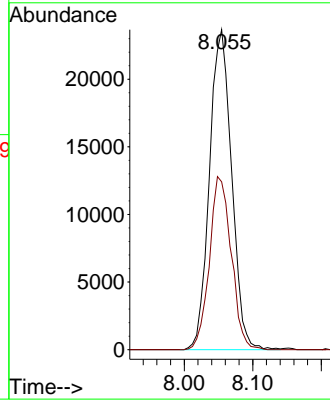


#33  
 1,2-Dichloroethane-d4  
 Concen: 48.546 ug/l  
 RT: 8.055 min Scan# 110  
 Delta R.T. 0.006 min  
 Lab File: VY019326.D  
 Acq: 28 Aug 2024 13:27

Instrument :  
 MSVOA\_Y  
 ClientSampleId :

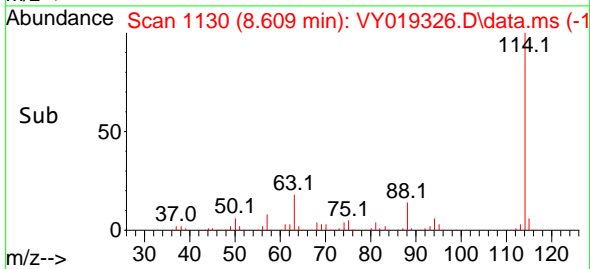
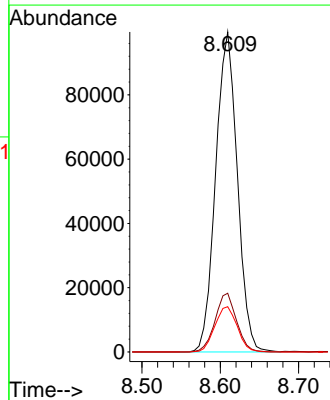
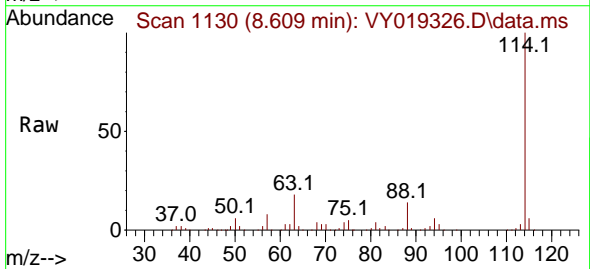


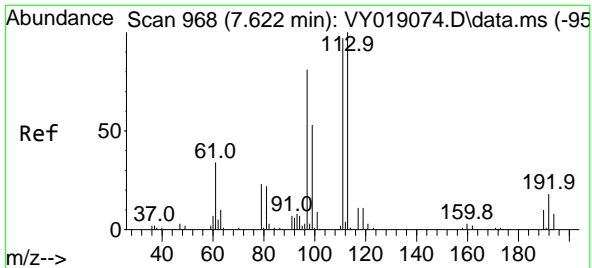
Tgt Ion: 65 Resp: 53216  
 Ion Ratio Lower Upper  
 65 100  
 67 53.3 0.0 109.6



#34  
 1,4-Difluorobenzene  
 Concen: 50.000 ug/l  
 RT: 8.609 min Scan# 1130  
 Delta R.T. 0.006 min  
 Lab File: VY019326.D  
 Acq: 28 Aug 2024 13:27

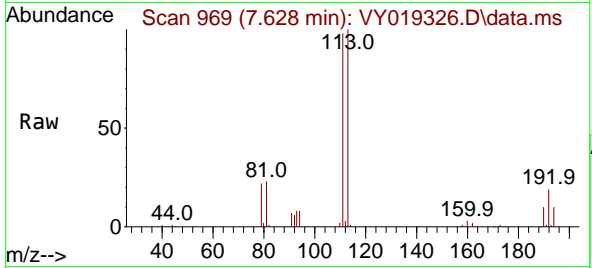
Tgt Ion: 114 Resp: 191693  
 Ion Ratio Lower Upper  
 114 100  
 63 18.4 0.0 35.0  
 88 14.2 0.0 27.2



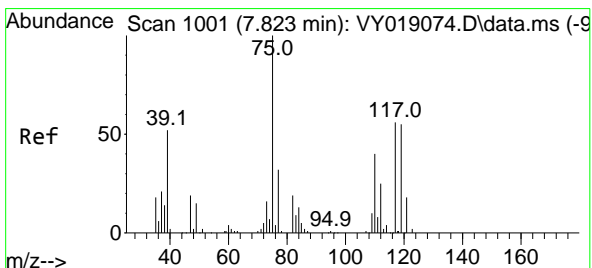
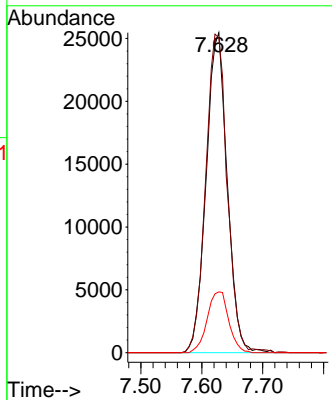
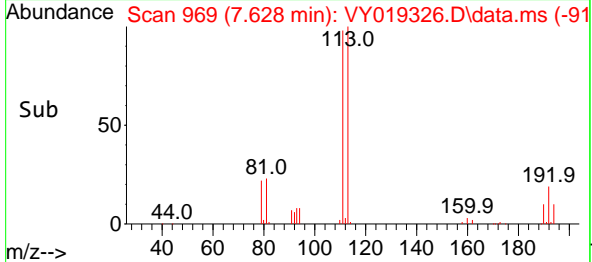


#35  
 Dibromofluoromethane  
 Concen: 48.966 ug/l  
 RT: 7.628 min Scan# 901  
 Delta R.T. 0.006 min  
 Lab File: VY019326.D  
 Acq: 28 Aug 2024 13:27

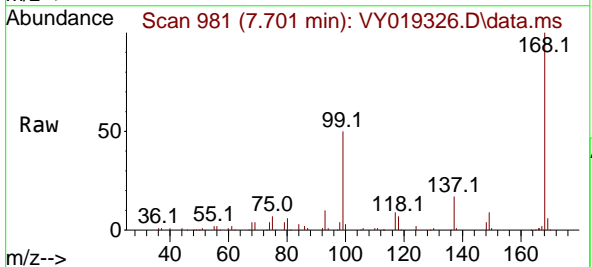
Instrument : MSVOA\_Y  
 ClientSampleId :



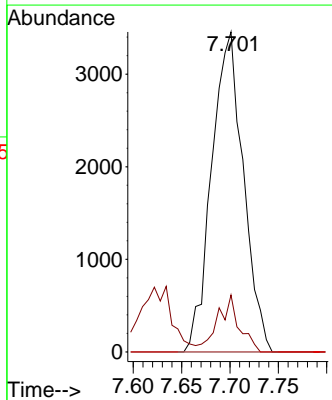
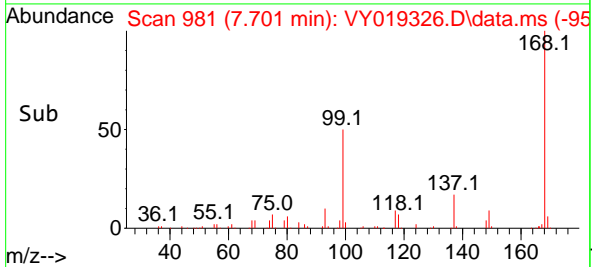
Tgt Ion:113 Resp: 61374  
 Ion Ratio Lower Upper  
 113 100  
 111 101.5 82.2 123.4  
 192 19.3 15.9 23.9

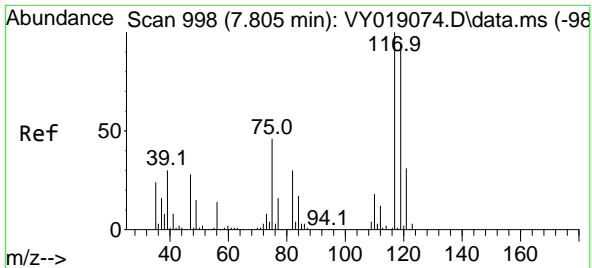


#36  
 1,1-Dichloropropene  
 Concen: 4.580 ug/l  
 RT: 7.701 min Scan# 981  
 Delta R.T. -0.122 min  
 Lab File: VY019326.D  
 Acq: 28 Aug 2024 13:27



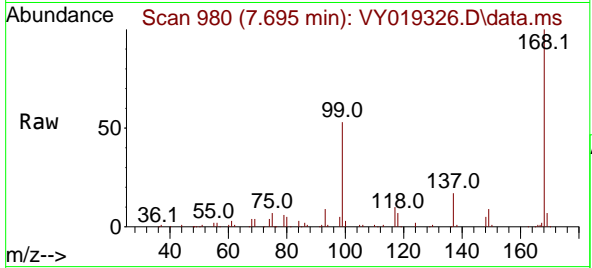
Tgt Ion: 75 Resp: 7882  
 Ion Ratio Lower Upper  
 75 100  
 110 12.1 19.0 57.0#  
 77 0.0 25.3 37.9#



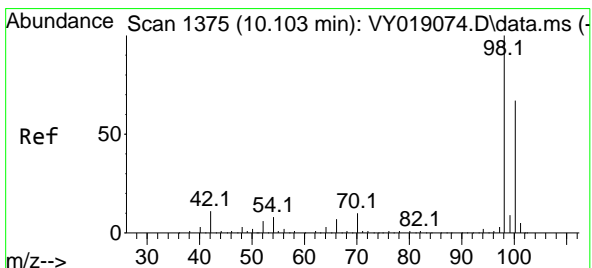
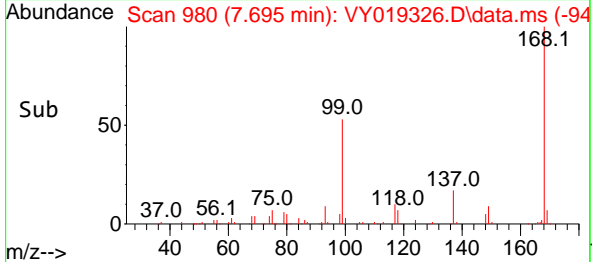
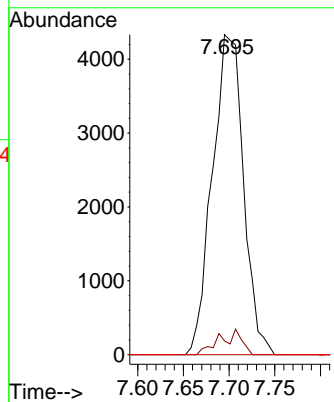


#38  
 Carbon Tetrachloride  
 Concen: 5.148 ug/l  
 RT: 7.695 min Scan# 94  
 Delta R.T. -0.110 min  
 Lab File: VY019326.D  
 Acq: 28 Aug 2024 13:27

Instrument :  
 MSVOA\_Y  
 ClientSampleId :

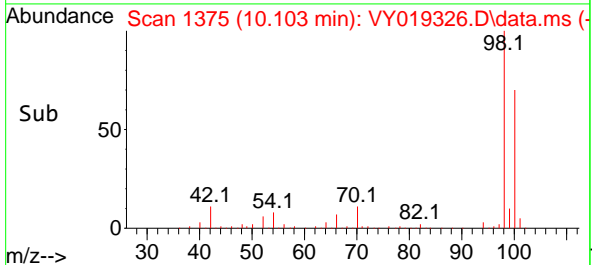
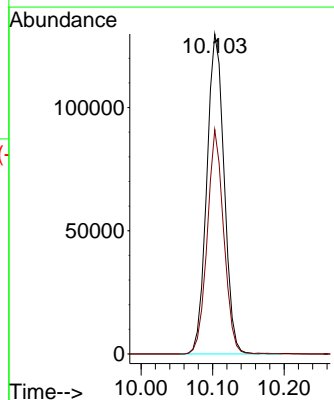
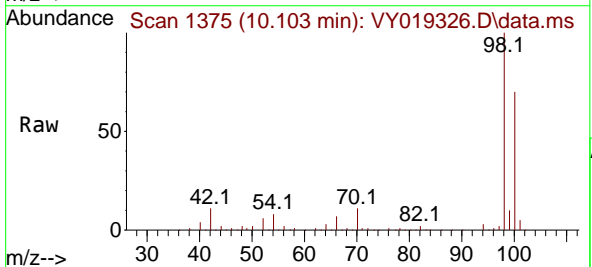


Tgt Ion: 117 Resp: 10268  
 Ion Ratio Lower Upper  
 117 100  
 119 4.3 75.8 113.6#  
 121 0.0 24.0 36.0#

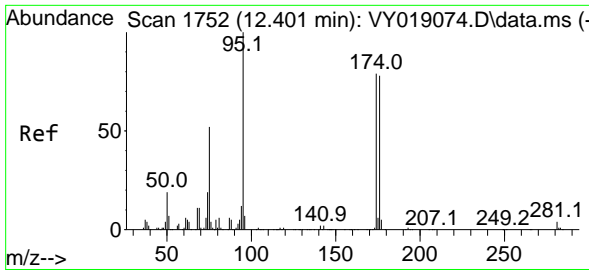


#50  
 Toluene-d8  
 Concen: 48.448 ug/l  
 RT: 10.103 min Scan# 1375  
 Delta R.T. 0.000 min  
 Lab File: VY019326.D  
 Acq: 28 Aug 2024 13:27

Tgt Ion: 98 Resp: 218530  
 Ion Ratio Lower Upper  
 98 100  
 100 66.8 52.0 78.0

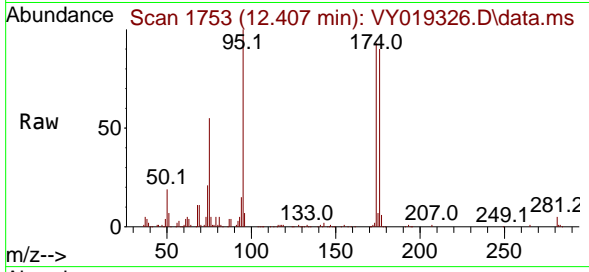




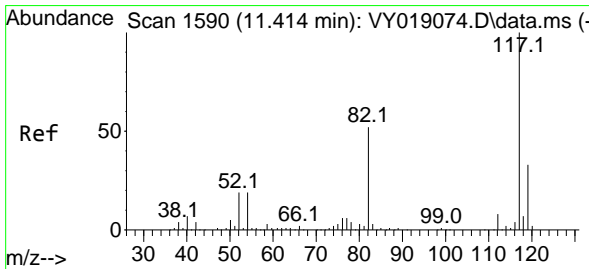
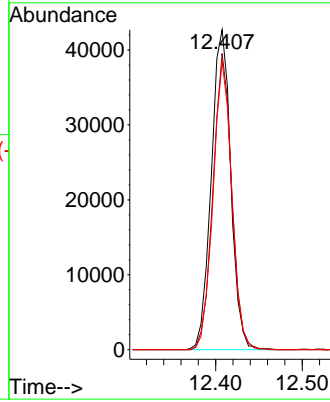
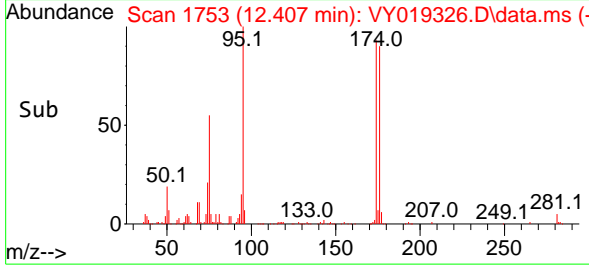


#62  
 4-Bromofluorobenzene  
 Concen: 43.477 ug/l  
 RT: 12.407 min Scan# 1753  
 Delta R.T. 0.006 min  
 Lab File: VY019326.D  
 Acq: 28 Aug 2024 13:27

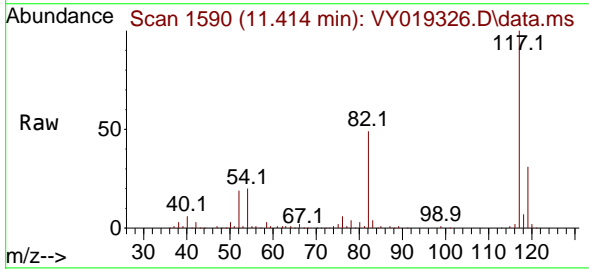
Instrument :  
 MSVOA\_Y  
 ClientSampleId :



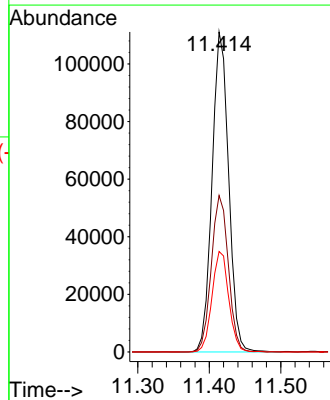
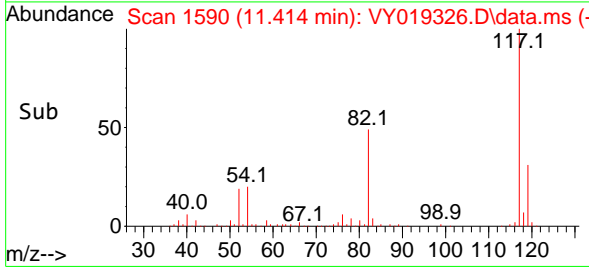
Tgt Ion: 95 Resp: 66852  
 Ion Ratio Lower Upper  
 95 100  
 174 88.7 0.0 175.6  
 176 86.6 0.0 171.4

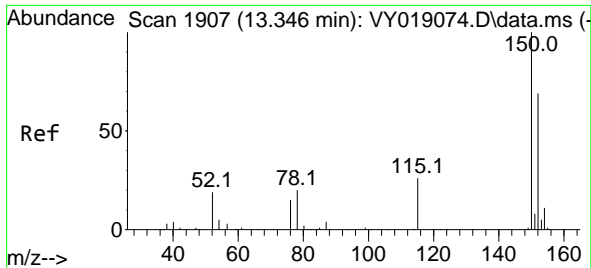


#63  
 Chlorobenzene-d5  
 Concen: 50.000 ug/l  
 RT: 11.414 min Scan# 1590  
 Delta R.T. 0.000 min  
 Lab File: VY019326.D  
 Acq: 28 Aug 2024 13:27



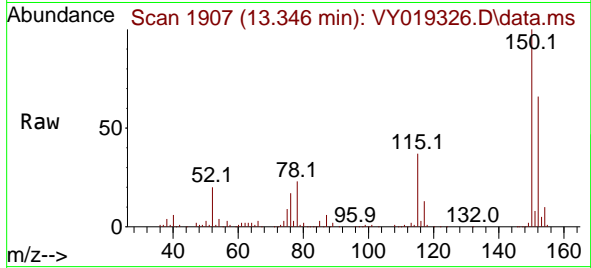
Tgt Ion: 117 Resp: 178659  
 Ion Ratio Lower Upper  
 117 100  
 82 48.9 42.4 63.6  
 119 31.4 25.9 38.9



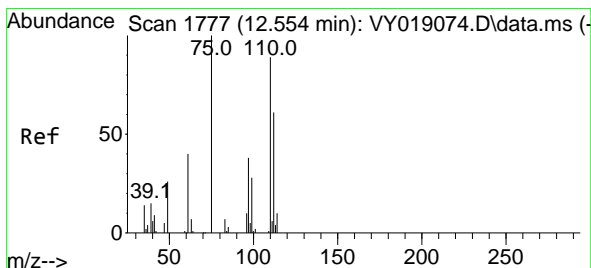
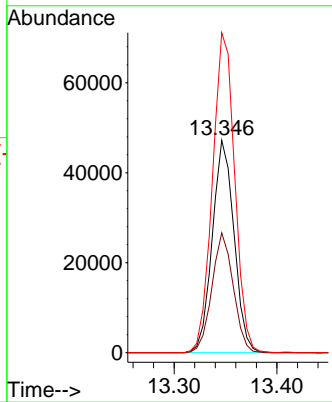
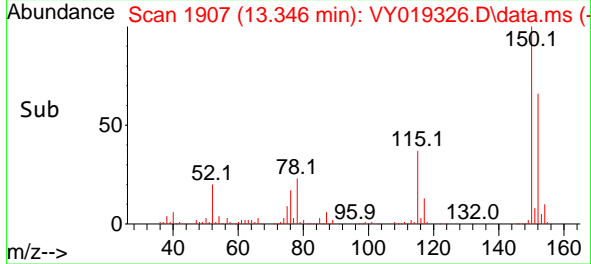


#72  
 1,4-Dichlorobenzene-d4  
 Concen: 50.000 ug/l  
 RT: 13.346 min Scan# 1907  
 Delta R.T. 0.000 min  
 Lab File: VY019326.D  
 Acq: 28 Aug 2024 13:27

Instrument : MSVOA\_Y  
 ClientSampleId :

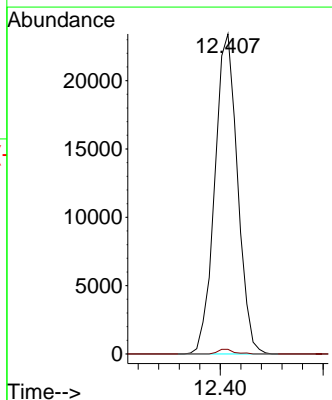
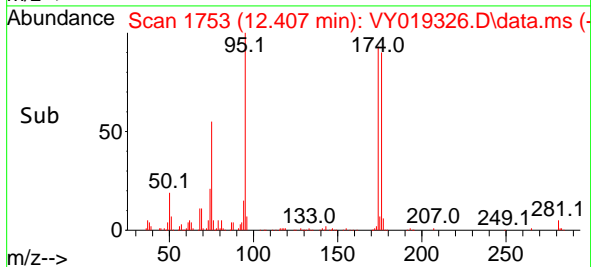
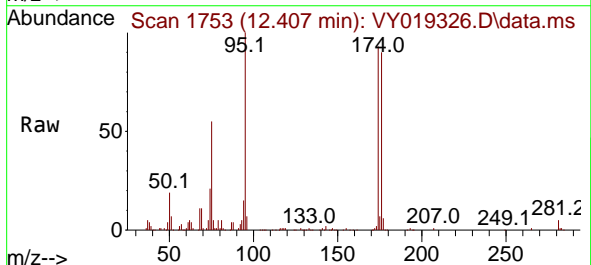


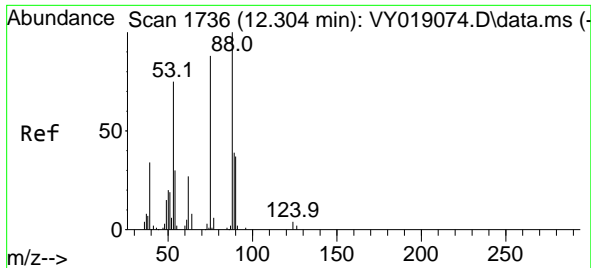
Tgt Ion:152 Resp: 69188  
 Ion Ratio Lower Upper  
 152 100  
 115 55.6 28.2 84.7  
 150 154.2 0.0 345.6



#76  
 1,2,3-Trichloropropane  
 Concen: 52.707 ug/l  
 RT: 12.407 min Scan# 1753  
 Delta R.T. -0.146 min  
 Lab File: VY019326.D  
 Acq: 28 Aug 2024 13:27

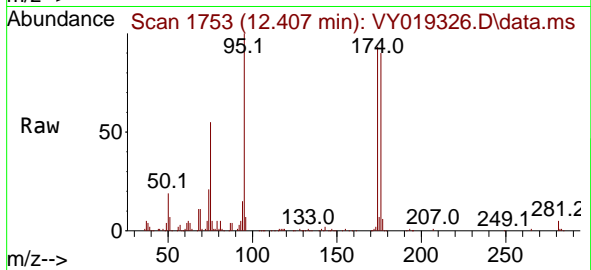
Tgt Ion: 75 Resp: 35963  
 Ion Ratio Lower Upper  
 75 100  
 77 1.0 0.0 0.0#





#81  
 trans-1,4-Dichloro-2-butene  
 Concen: 130.169 ug/l  
 RT: 12.407 min Scan# 1  
 Delta R.T. 0.104 min  
 Lab File: VY019326.D  
 Acq: 28 Aug 2024 13:27

Instrument :  
 MSVOA\_Y  
 ClientSampleId :



Tgt Ion: 75 Resp: 35963

Ion	Ratio	Lower	Upper
75	100		
53	0.0	66.8	100.2#
89	0.1	35.8	53.6#

