

Data Path : Z:\voasrv\HPCHEM1\MSVOA_Y\Data\VY082824\
 Data File : VY019360.D
 Acq On : 29 Aug 2024 05:53
 Operator : SY/MD
 Sample : P3750-04
 Misc : 5.04g/5.0mL/MSVOA_Y/SOIL/A
 ALS Vial : 44 Sample Multiplier: 1

Instrument :
 MSVOA_Y
 ClientSampleId :

Quant Time: Aug 29 07:02:23 2024
 Quant Method : Z:\voasrv\HPCHEM1\MSVOA_Y\methods\82Y081524S.M
 Quant Title : SW846 8260
 QLast Update : Fri Aug 16 05:10:30 2024
 Response via : Initial Calibration

Compound	R.T.	QIon	Response	Conc	Units	Dev(Min)

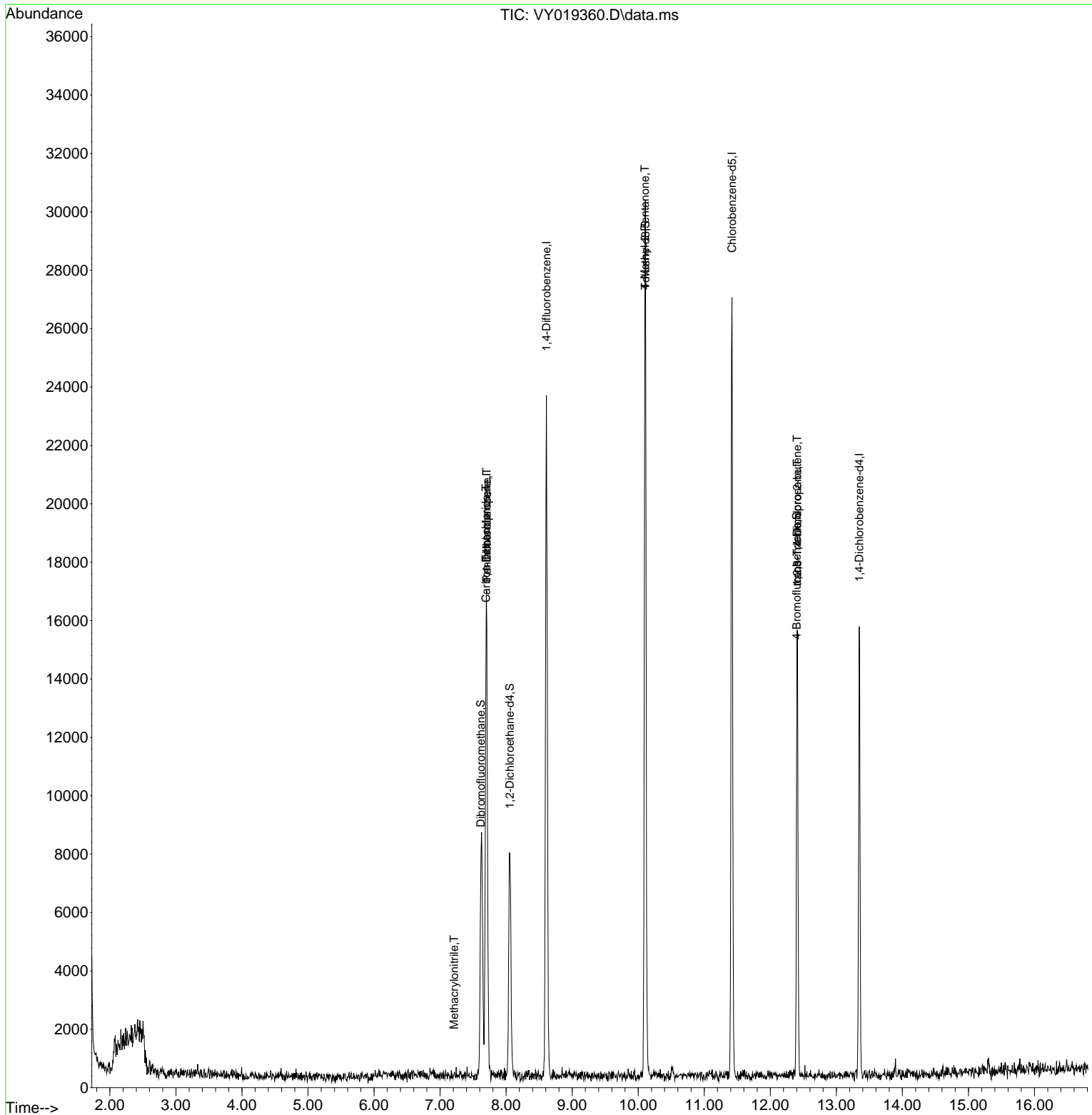
Internal Standards						
1) Pentafluorobenzene	7.707	168	12976	50.000	ug/l	0.01
34) 1,4-Difluorobenzene	8.609	114	19613	50.000	ug/l	0.00
63) Chlorobenzene-d5	11.420	117	15232	50.000	ug/l	0.00
72) 1,4-Dichlorobenzene-d4	13.346	152	4007	50.000	ug/l	0.00
System Monitoring Compounds						
33) 1,2-Dichloroethane-d4	8.055	65	6733	51.763	ug/l	0.00
Spiked Amount	50.000	Range	50 - 163	Recovery	=	103.520%
35) Dibromofluoromethane	7.616	113	6043	47.122	ug/l	0.00
Spiked Amount	50.000	Range	54 - 147	Recovery	=	94.240%
50) Toluene-d8	10.109	98	20761	44.986	ug/l	0.00
Spiked Amount	50.000	Range	58 - 134	Recovery	=	89.980%
62) 4-Bromofluorobenzene	12.401	95	4495	28.572	ug/l	0.00
Spiked Amount	50.000	Range	29 - 146	Recovery	=	57.140%
Target Compounds						
					Qvalue	
5) Bromomethane	2.604	94	182	Below Cal	#	3
31) Cyclohexane	7.701	56	233	Below Cal	#	1
36) 1,1-Dichloropropene	7.707	75	1049	5.957	ug/l #	49
38) Carbon Tetrachloride	7.695	117	1399	6.855	ug/l #	13
41) Methacrylonitrile	7.213	41	45	1.057	ug/l #	15
51) 4-Methyl-2-Pentanone	10.103	43	94	1.122	ug/l #	31
76) 1,2,3-Trichloropropane	12.407	75	2614	66.150	ug/l #	100
81) trans-1,4-Dichloro-2-b...	12.407	75	2614	163.368	ug/l #	16

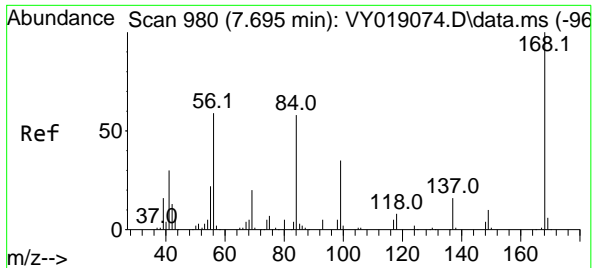
(#) = qualifier out of range (m) = manual integration (+) = signals summed

Data Path : Z:\voasrv\HPCHEM1\MSVOA_Y\Data\VY082824\
Data File : VY019360.D
Acq On : 29 Aug 2024 05:53
Operator : SY/MD
Sample : P3750-04
Misc : 5.04g/5.0mL/MSVOA_Y/SOIL/A
ALS Vial : 44 Sample Multiplier: 1

Instrument :
MSVOA_Y
ClientSampleId :

Quant Time: Aug 29 07:02:23 2024
Quant Method : Z:\voasrv\HPCHEM1\MSVOA_Y\methods\82Y081524S.M
Quant Title : SW846 8260
QLast Update : Fri Aug 16 05:10:30 2024
Response via : Initial Calibration

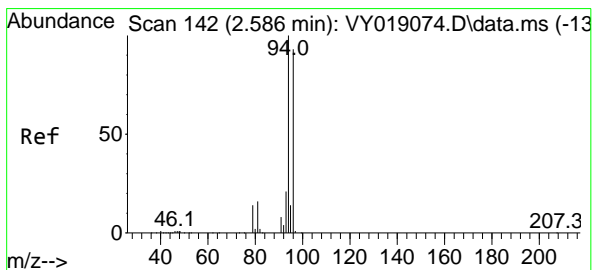
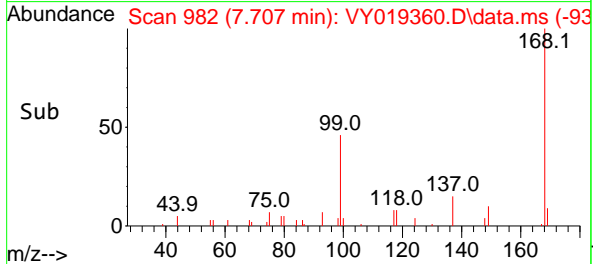
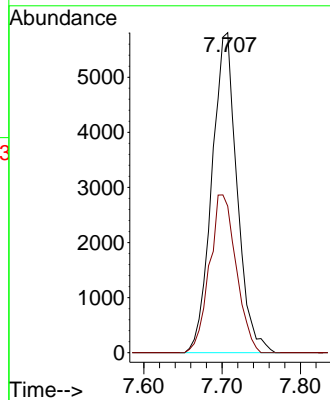
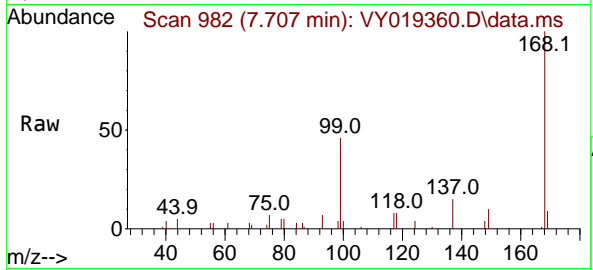




#1
 Pentafluorobenzene
 Concen: 50.000 ug/l
 RT: 7.707 min Scan# 99
 Delta R.T. 0.012 min
 Lab File: VY019360.D
 Acq: 29 Aug 2024 05:53

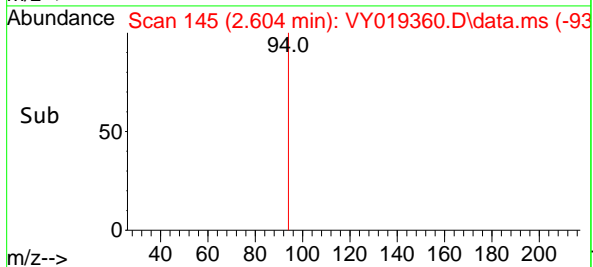
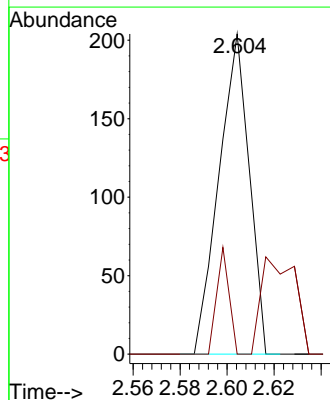
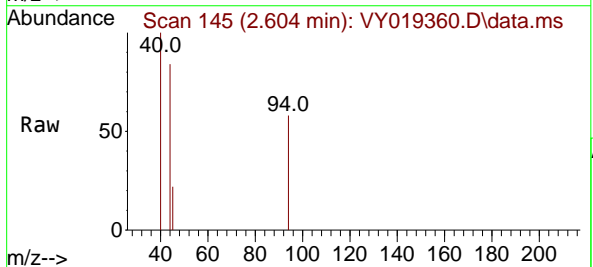
Instrument :
 MSVOA_Y
 ClientSampleId :

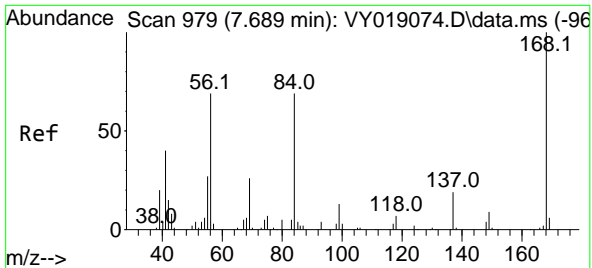
Tgt Ion:168 Resp: 12976
 Ion Ratio Lower Upper
 168 100
 99 45.8 39.1 58.7



#5
 Bromomethane
 Concen: Below Cal
 RT: 2.604 min Scan# 145
 Delta R.T. 0.018 min
 Lab File: VY019360.D
 Acq: 29 Aug 2024 05:53

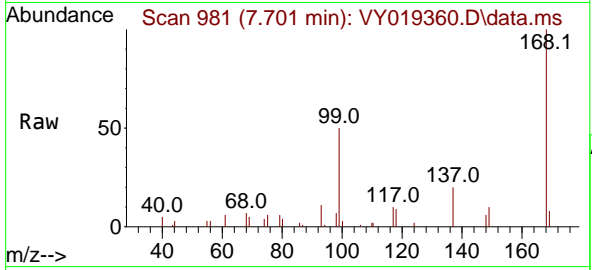
Tgt Ion: 94 Resp: 182
 Ion Ratio Lower Upper
 94 100
 96 0.0 74.1 111.1#



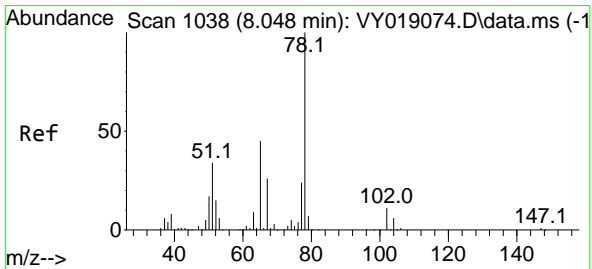
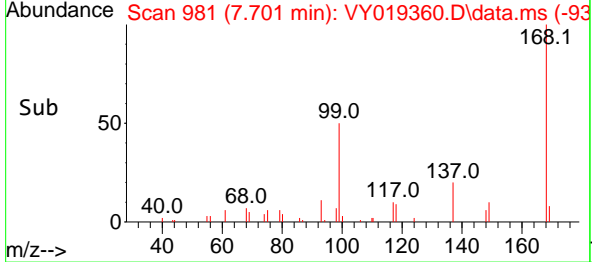
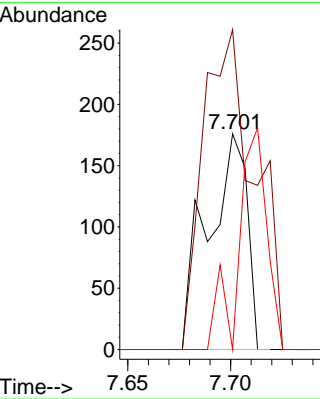


#31
 Cyclohexane
 Concen: Below Cal
 RT: 7.701 min Scan# 91
 Delta R.T. 0.012 min
 Lab File: VY019360.D
 Acq: 29 Aug 2024 05:53

Instrument :
 MSVOA_Y
 ClientSampleId :

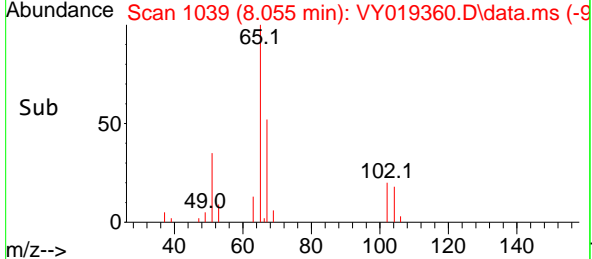
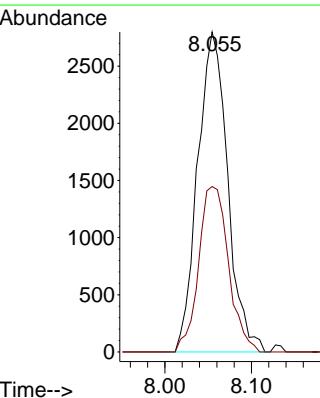
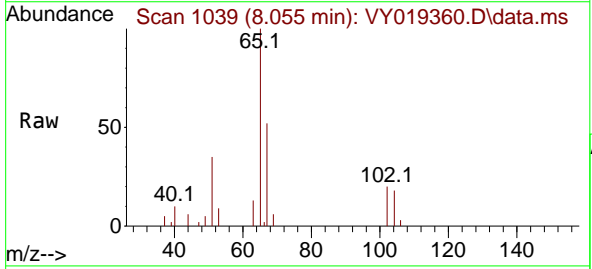


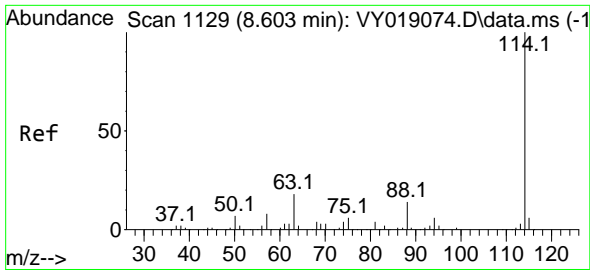
Tgt Ion: 56 Resp: 233
 Ion Ratio Lower Upper
 56 100
 69 148.3 28.7 43.1#
 84 0.0 77.7 116.5#



#33
 1,2-Dichloroethane-d4
 Concen: 51.763 ug/l
 RT: 8.055 min Scan# 1039
 Delta R.T. 0.006 min
 Lab File: VY019360.D
 Acq: 29 Aug 2024 05:53

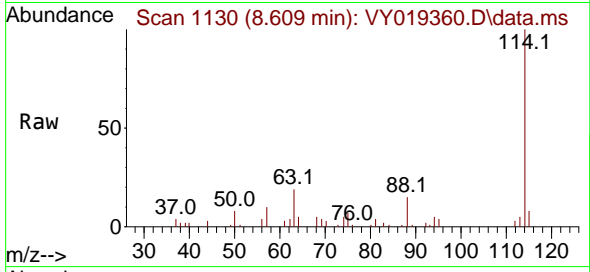
Tgt Ion: 65 Resp: 6733
 Ion Ratio Lower Upper
 65 100
 67 51.5 0.0 109.6



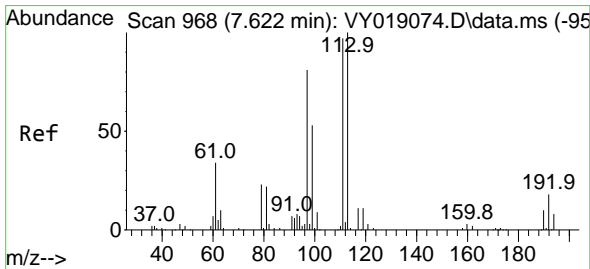
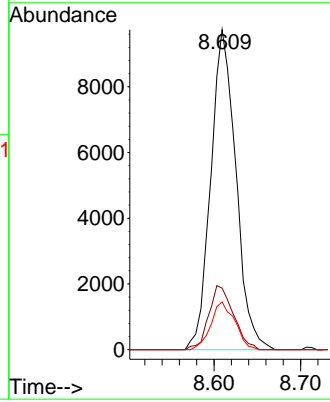
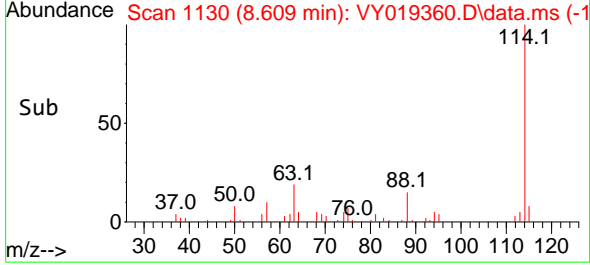


#34
 1,4-Difluorobenzene
 Concen: 50.000 ug/l
 RT: 8.609 min Scan# 1129
 Delta R.T. 0.006 min
 Lab File: VY019360.D
 Acq: 29 Aug 2024 05:53

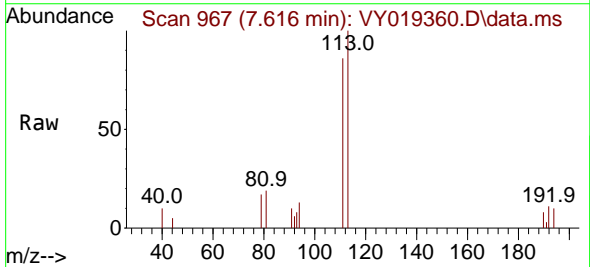
Instrument :
 MSVOA_Y
 ClientSampleId :



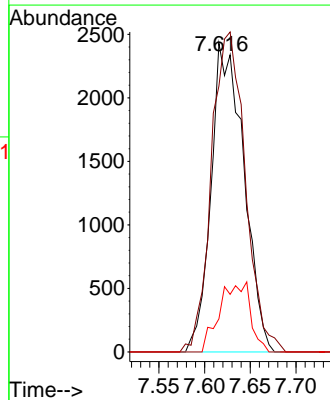
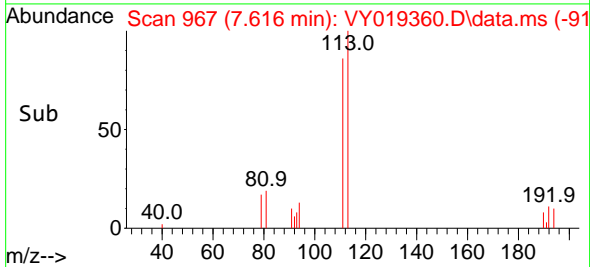
Tgt Ion:114 Resp: 19613
 Ion Ratio Lower Upper
 114 100
 63 19.2 0.0 35.0
 88 14.9 0.0 27.2

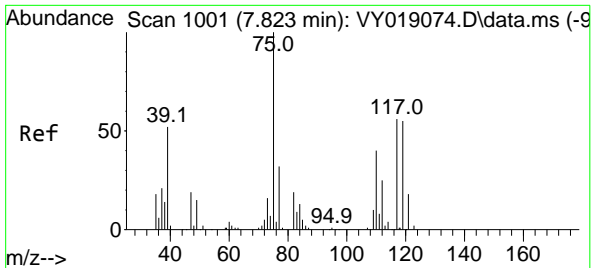


#35
 Dibromofluoromethane
 Concen: 47.122 ug/l
 RT: 7.616 min Scan# 967
 Delta R.T. -0.006 min
 Lab File: VY019360.D
 Acq: 29 Aug 2024 05:53



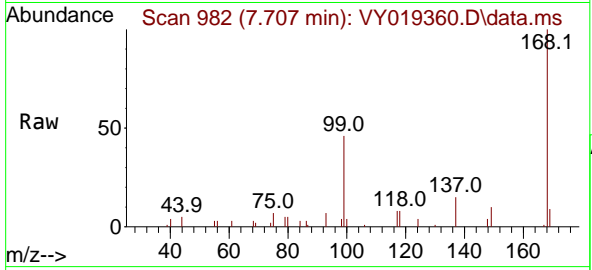
Tgt Ion:113 Resp: 6043
 Ion Ratio Lower Upper
 113 100
 111 107.0 82.2 123.4
 192 0.0 15.9 23.9#



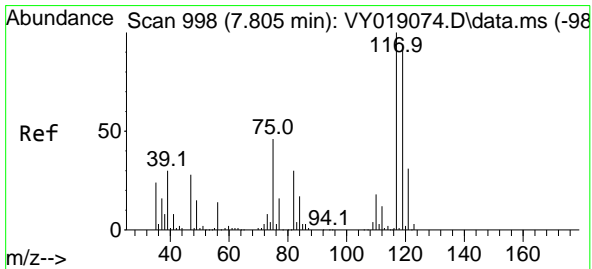
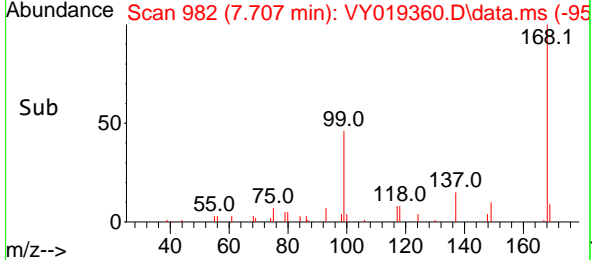
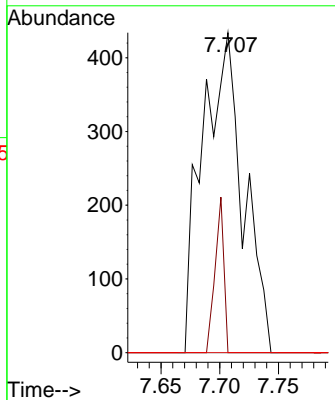


#36
 1,1-Dichloropropene
 Concen: 5.957 ug/l
 RT: 7.707 min Scan# 91
 Delta R.T. -0.116 min
 Lab File: VY019360.D
 Acq: 29 Aug 2024 05:53

Instrument :
 MSVOA_Y
 ClientSampleId :

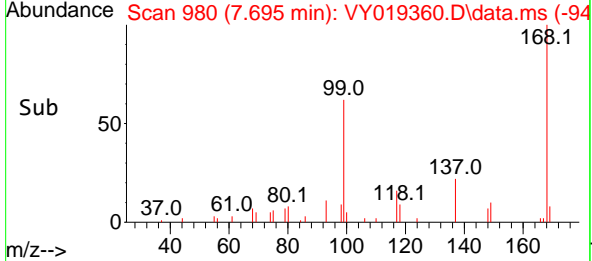
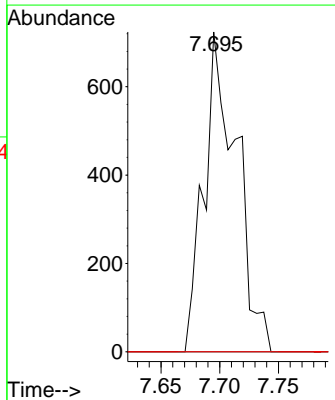
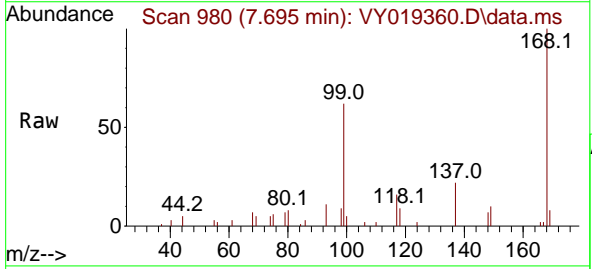


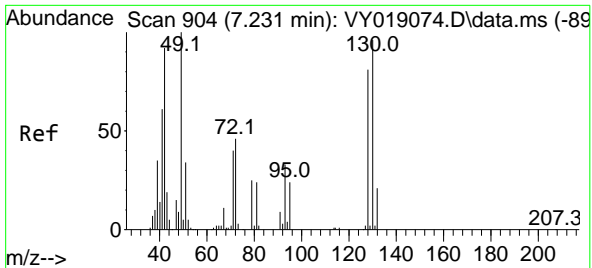
Tgt Ion: 75 Resp: 1049
 Ion Ratio Lower Upper
 75 100
 110 10.5 19.0 57.0#
 77 0.0 25.3 37.9#



#38
 Carbon Tetrachloride
 Concen: 6.855 ug/l
 RT: 7.695 min Scan# 980
 Delta R.T. -0.110 min
 Lab File: VY019360.D
 Acq: 29 Aug 2024 05:53

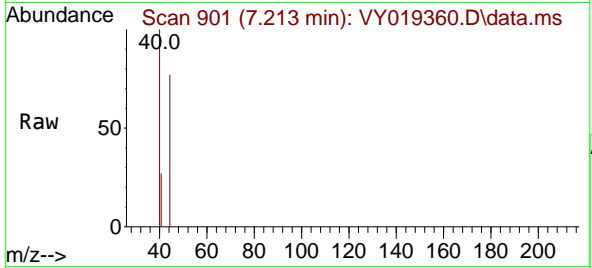
Tgt Ion: 117 Resp: 1399
 Ion Ratio Lower Upper
 117 100
 119 0.0 75.8 113.6#
 121 0.0 24.0 36.0#





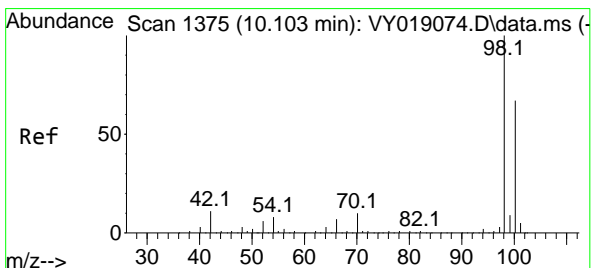
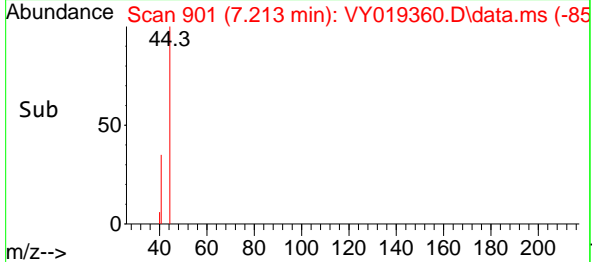
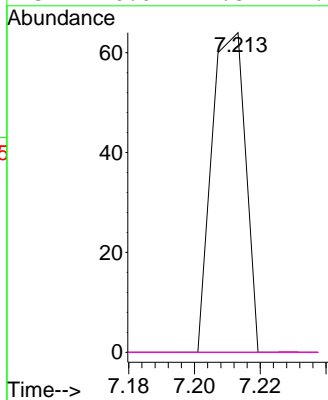
#41
 Methacrylonitrile
 Concen: 1.057 ug/l
 RT: 7.213 min Scan# 90
 Delta R.T. -0.018 min
 Lab File: VY019360.D
 Acq: 29 Aug 2024 05:53

Instrument :
 MSVOA_Y
 ClientSampleId :



Tgt Ion: 41 Resp: 45

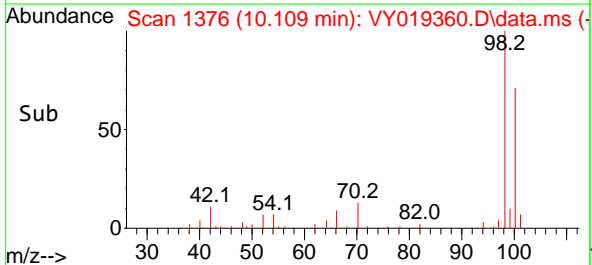
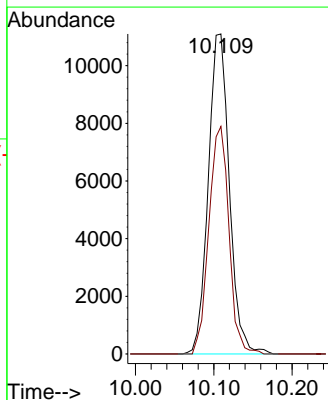
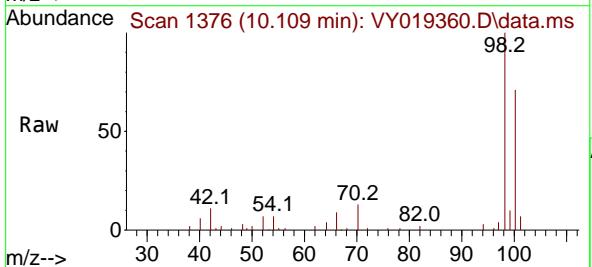
Ion	Ratio	Lower	Upper
41	100		
39	0.0	48.0	72.0#
67	0.0	75.1	112.7#
52	0.0	29.8	44.6#

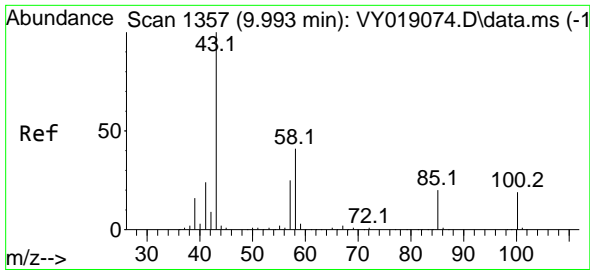


#50
 Toluene-d8
 Concen: 44.986 ug/l
 RT: 10.109 min Scan# 1376
 Delta R.T. 0.006 min
 Lab File: VY019360.D
 Acq: 29 Aug 2024 05:53

Tgt Ion: 98 Resp: 20761

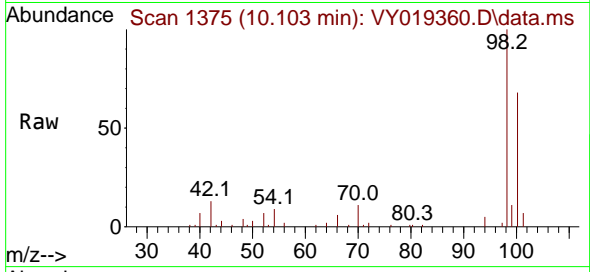
Ion	Ratio	Lower	Upper
98	100		
100	67.6	52.0	78.0



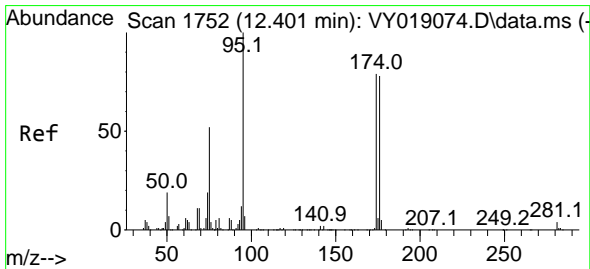
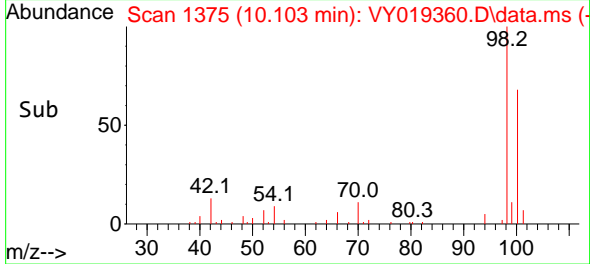
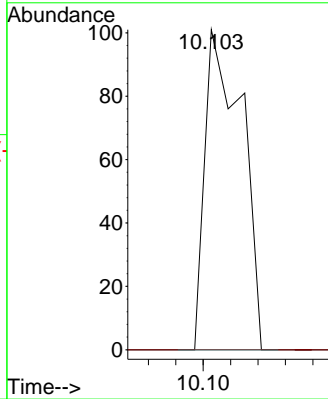


#51
 4-Methyl-2-Pentanone
 Concen: 1.122 ug/l
 RT: 10.103 min Scan# 11
 Delta R.T. 0.110 min
 Lab File: VY019360.D
 Acq: 29 Aug 2024 05:53

Instrument :
 MSVOA_Y
 ClientSampleId :

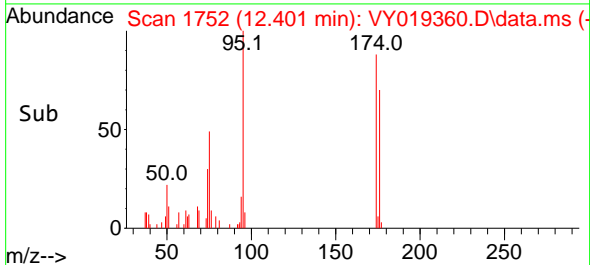
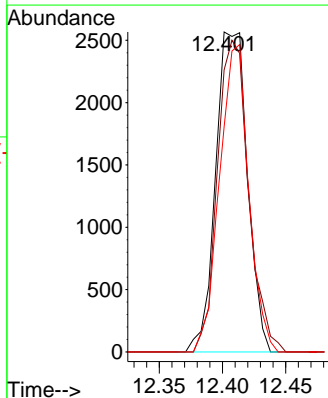
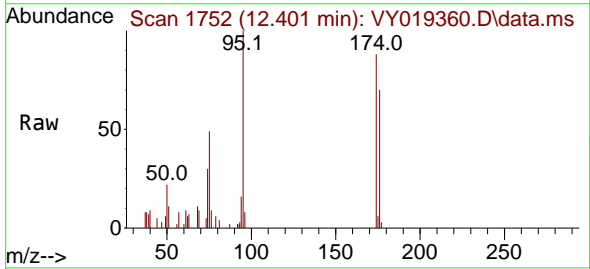


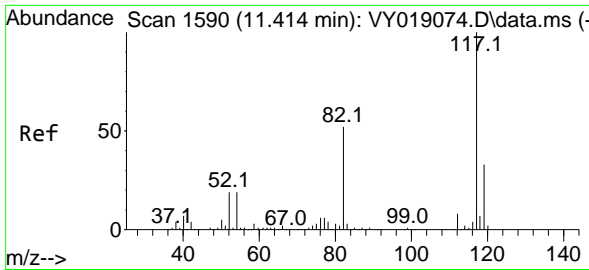
Tgt Ion: 43 Resp: 94
 Ion Ratio Lower Upper
 43 100
 58 0.0 35.7 53.5#



#62
 4-Bromofluorobenzene
 Concen: 28.572 ug/l
 RT: 12.401 min Scan# 1752
 Delta R.T. 0.000 min
 Lab File: VY019360.D
 Acq: 29 Aug 2024 05:53

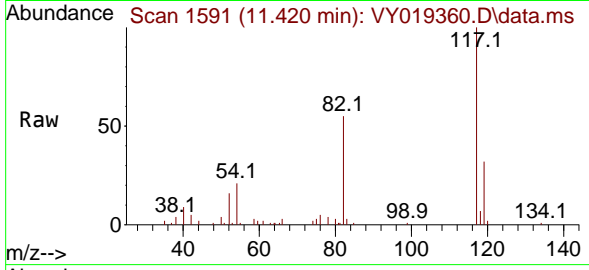
Tgt Ion: 95 Resp: 4495
 Ion Ratio Lower Upper
 95 100
 174 94.9 0.0 175.6
 176 88.1 0.0 171.4



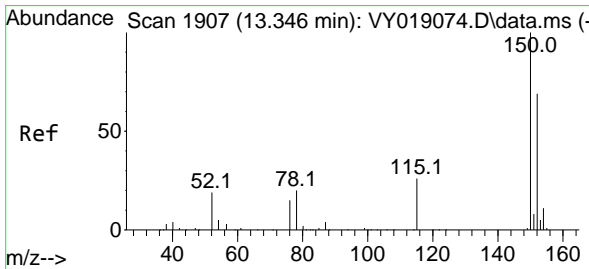
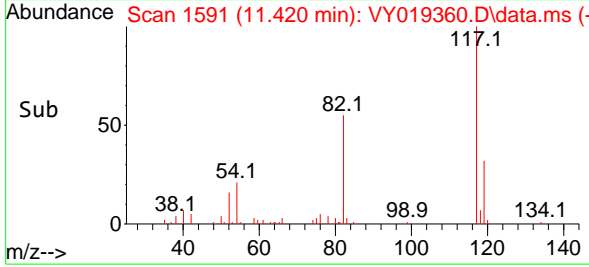
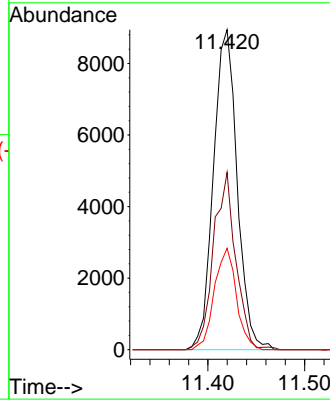


#63
 Chlorobenzene-d5
 Concen: 50.000 ug/l
 RT: 11.420 min Scan# 117
 Delta R.T. 0.006 min
 Lab File: VY019360.D
 Acq: 29 Aug 2024 05:53

Instrument :
 MSVOA_Y
 ClientSampleId :

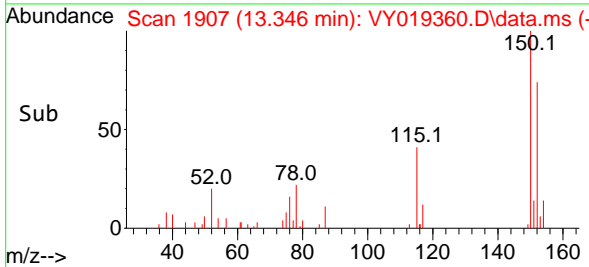
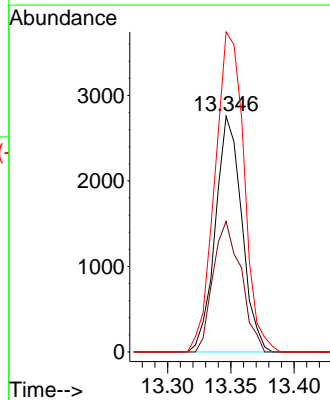
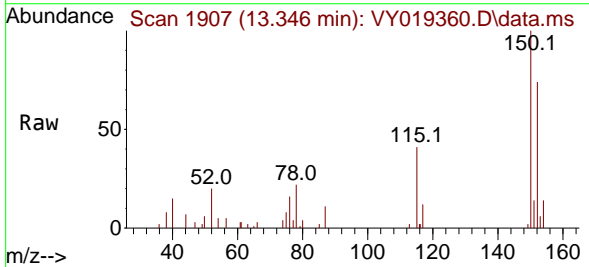


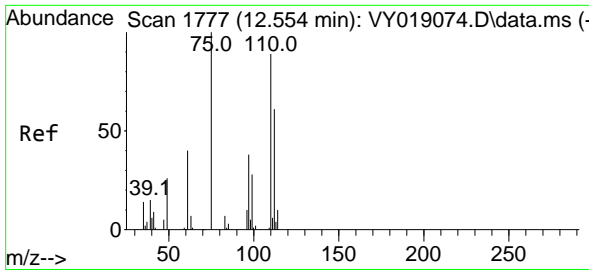
Tgt Ion:117 Resp: 15232
 Ion Ratio Lower Upper
 117 100
 82 55.4 42.4 63.6
 119 31.7 25.9 38.9



#72
 1,4-Dichlorobenzene-d4
 Concen: 50.000 ug/l
 RT: 13.346 min Scan# 1907
 Delta R.T. 0.000 min
 Lab File: VY019360.D
 Acq: 29 Aug 2024 05:53

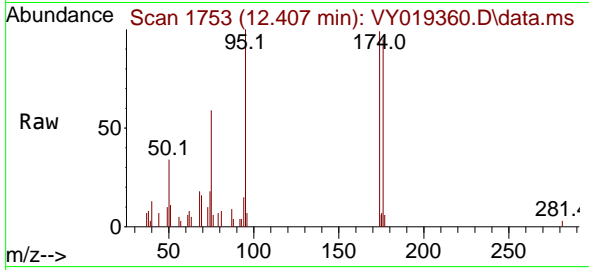
Tgt Ion:152 Resp: 4007
 Ion Ratio Lower Upper
 152 100
 115 58.5 28.2 84.7
 150 149.6 0.0 345.6



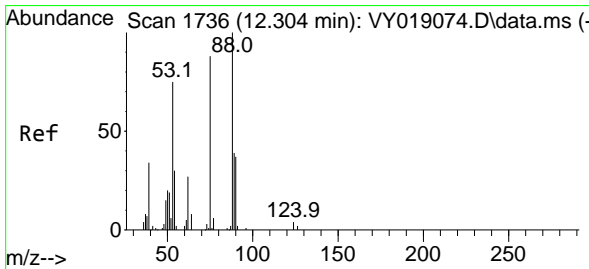
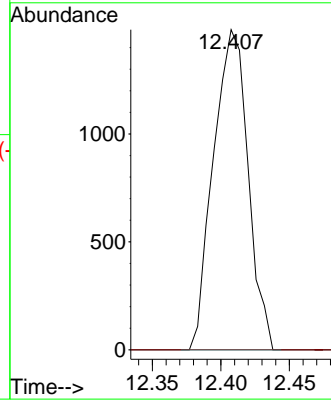
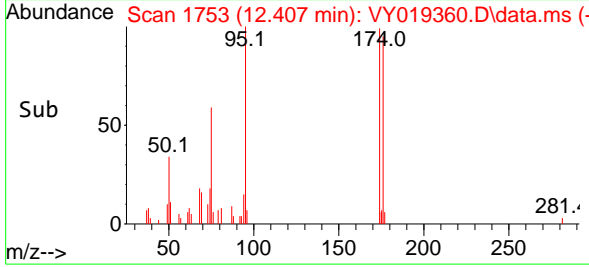


#76
 1,2,3-Trichloropropane
 Concen: 66.150 ug/l
 RT: 12.407 min Scan# 1753
 Delta R.T. -0.146 min
 Lab File: VY019360.D
 Acq: 29 Aug 2024 05:53

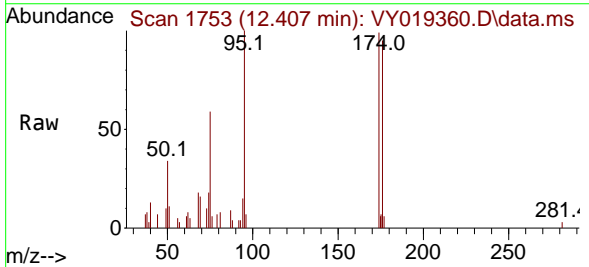
Instrument : MSVOA_Y
 ClientSampleId :



Tgt Ion: 75 Resp: 2614
 Ion Ratio Lower Upper
 75 100
 77 0.0 0.0 0.0



#81
 trans-1,4-Dichloro-2-butene
 Concen: 163.368 ug/l
 RT: 12.407 min Scan# 1753
 Delta R.T. 0.104 min
 Lab File: VY019360.D
 Acq: 29 Aug 2024 05:53



Tgt Ion: 75 Resp: 2614
 Ion Ratio Lower Upper
 75 100
 53 0.0 66.8 100.2#
 89 0.0 35.8 53.6#

