

Data Path : Z:\voasrv\HPCHEM1\MSVOA_Y\Data\VY082924\
 Data File : VY019376.D
 Acq On : 29 Aug 2024 17:12
 Operator : SY/MD
 Sample : VIBLK
 Misc : 5.00g/5.0mL/MSVOA_Y/SOIL
 ALS Vial : 8 Sample Multiplier: 1

Instrument :
 MSVOA_Y
 ClientSampleId :

Quant Time: Aug 30 02:53:49 2024
 Quant Method : Z:\voasrv\HPCHEM1\MSVOA_Y\methods\82Y082924S.M
 Quant Title : SW846 8260
 QLast Update : Fri Aug 30 02:45:30 2024
 Response via : Initial Calibration

Compound	R.T.	QIon	Response	Conc	Units	Dev(Min)

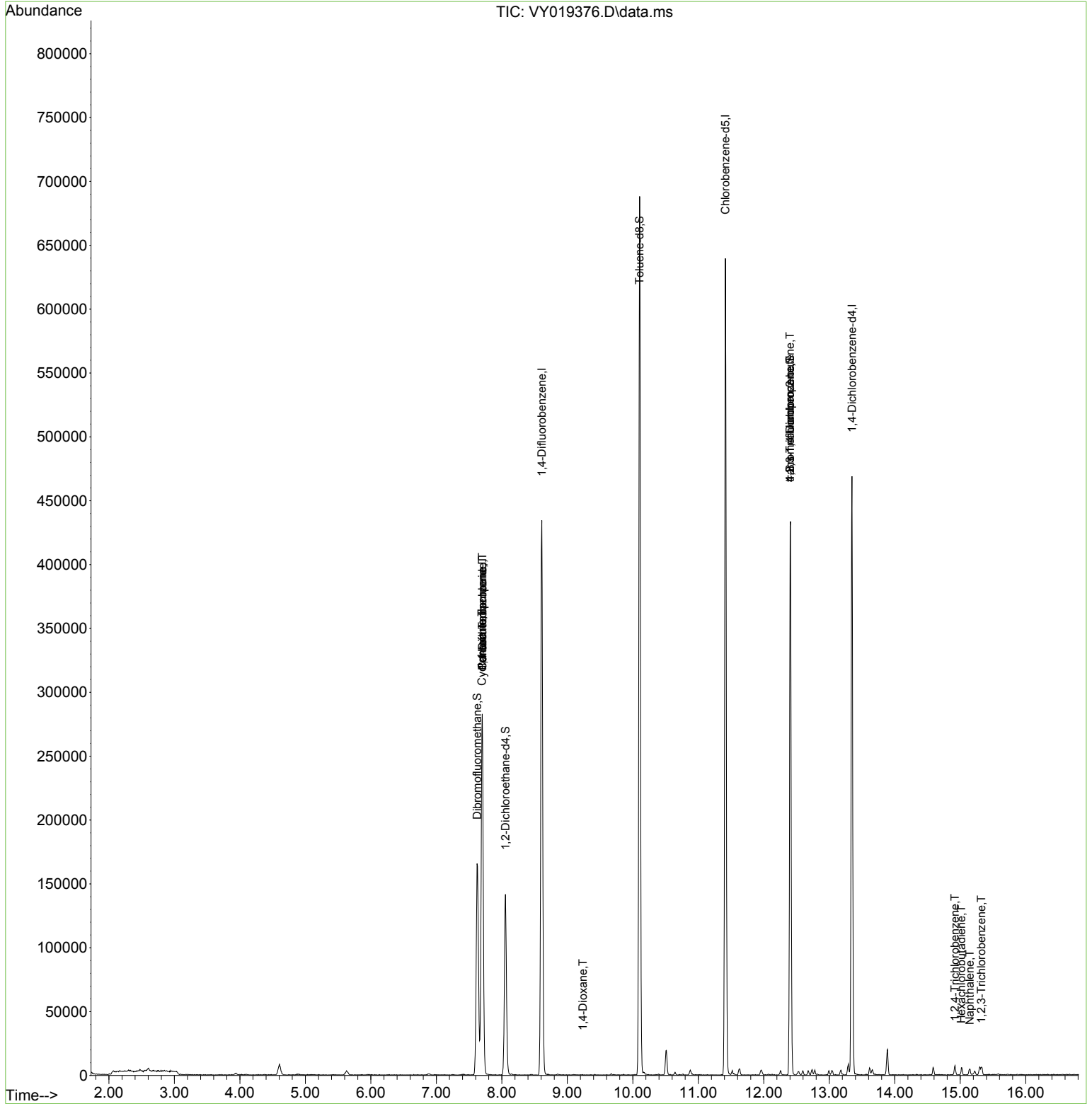
Internal Standards						
1) Pentafluorobenzene	7.701	168	219649	50.000	ug/l	0.00
34) 1,4-Difluorobenzene	8.609	114	382273	50.000	ug/l	0.00
63) Chlorobenzene-d5	11.414	117	332257	50.000	ug/l	0.00
72) 1,4-Dichlorobenzene-d4	13.346	152	116524	50.000	ug/l	0.00
System Monitoring Compounds						
33) 1,2-Dichloroethane-d4	8.055	65	109290	52.532	ug/l	0.00
Spiked Amount	50.000	Range	50 - 163	Recovery	=	105.060%
35) Dibromofluoromethane	7.622	113	115687	47.867	ug/l	0.00
Spiked Amount	50.000	Range	54 - 147	Recovery	=	95.740%
50) Toluene-d8	10.103	98	425603	47.837	ug/l	0.00
Spiked Amount	50.000	Range	58 - 134	Recovery	=	95.680%
62) 4-Bromofluorobenzene	12.401	95	125044	43.454	ug/l	0.00
Spiked Amount	50.000	Range	29 - 146	Recovery	=	86.900%
Target Compounds						
					Qvalue	
5) Bromomethane	2.598	94	1414	Below Cal	#	71
20) Methylene Chloride	4.604	84	5389	Below Cal	#	83
31) Cyclohexane	7.695	56	4943	1.397	ug/l #	28
36) 1,1-Dichloropropene	7.701	75	16295	4.771	ug/l #	49
38) Carbon Tetrachloride	7.701	117	21863	5.252	ug/l #	16
49) 1,4-Dioxane	9.237	88	20	1.347	ug/l #	20
76) 1,2,3-Trichloropropane	12.401	75	70184	68.585	ug/l #	100
81) trans-1,4-Dichloro-2-b...	12.401	75	70184	169.684	ug/l #	16
93) 1,2,4-Trichlorobenzene	14.919	180	2403	1.316	ug/l	96
94) Hexachlorobutadiene	15.017	225	988	4.110	ug/l	82
95) Naphthalene	15.145	128	4111	1.375	ug/l	97
96) 1,2,3-Trichlorobenzene	15.322	180	2266	1.450	ug/l	93

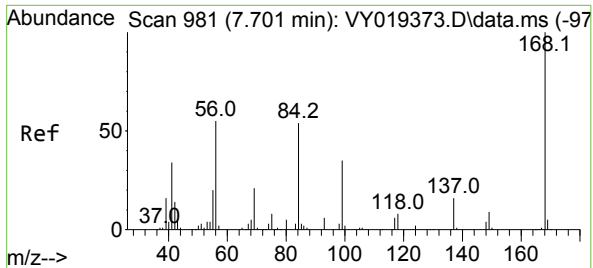
(#) = qualifier out of range (m) = manual integration (+) = signals summed

Data Path : Z:\voasrv\HPCHEM1\MSVOA_Y\Data\VY082924\
 Data File : VY019376.D
 Acq On : 29 Aug 2024 17:12
 Operator : SY/MD
 Sample : VI BLK
 Misc : 5.00g/5.0mL/MSVOA_Y/SOIL
 ALS Vial : 8 Sample Multiplier: 1

Instrument :
 MSVOA_Y
 ClientSampleId :

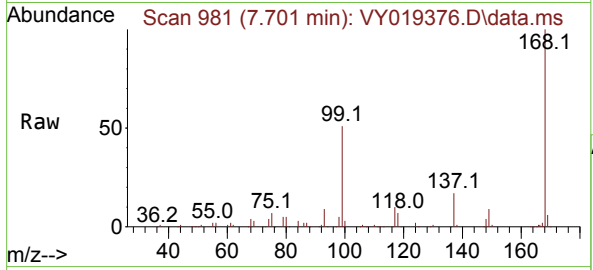
Quant Time: Aug 30 02:53:49 2024
 Quant Method : Z:\voasrv\HPCHEM1\MSVOA_Y\methods\82Y082924S.M
 Quant Title : SW846 8260
 QLast Update : Fri Aug 30 02:45:30 2024
 Response via : Initial Calibration



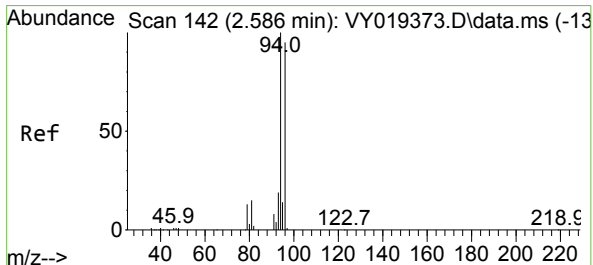
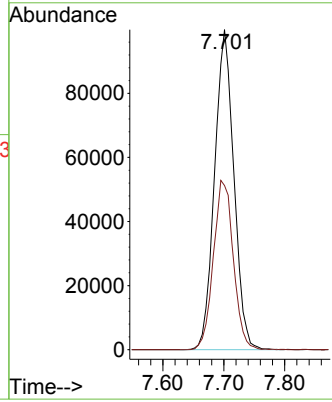
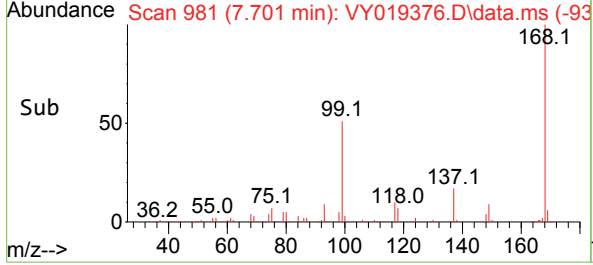


#1
 Pentafluorobenzene
 Concen: 50.000 ug/l
 RT: 7.701 min Scan# 91
 Delta R.T. 0.000 min
 Lab File: VY019376.D
 Acq: 29 Aug 2024 17:12

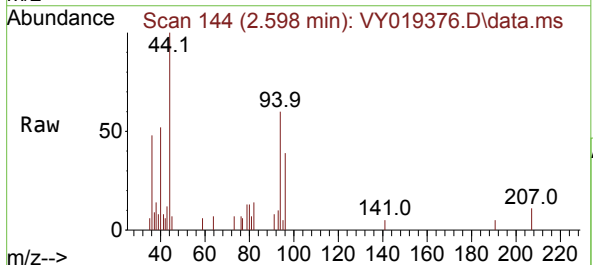
Instrument : MSVOA_Y
 ClientSampleId :



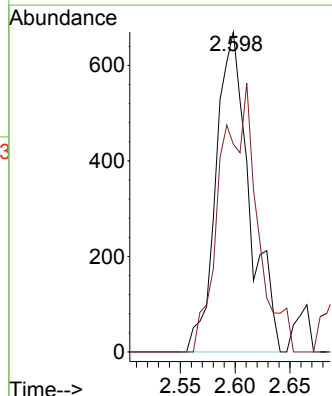
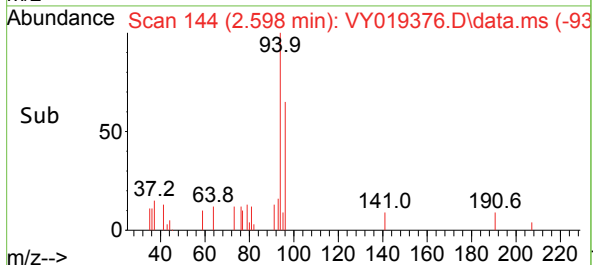
Tgt Ion:168 Resp: 219649
 Ion Ratio Lower Upper
 168 100
 99 51.3 39.1 58.7

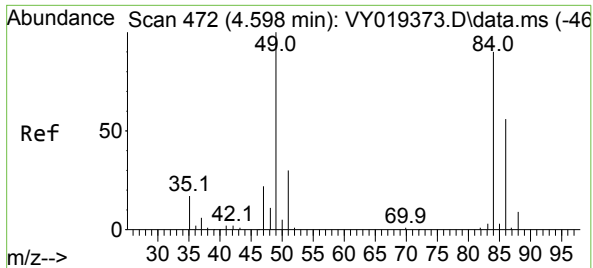


#5
 Bromomethane
 Concen: Below Cal
 RT: 2.598 min Scan# 144
 Delta R.T. 0.012 min
 Lab File: VY019376.D
 Acq: 29 Aug 2024 17:12



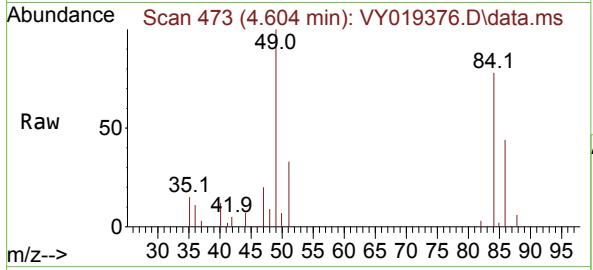
Tgt Ion: 94 Resp: 1414
 Ion Ratio Lower Upper
 94 100
 96 64.9 74.1 111.1#





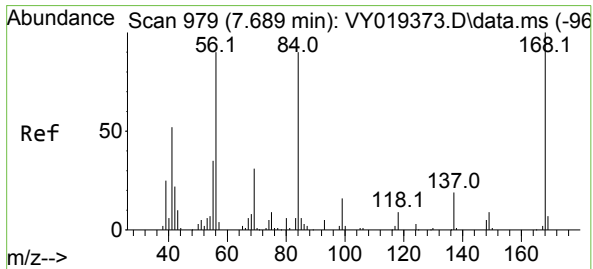
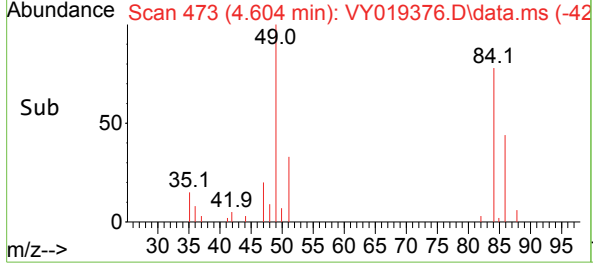
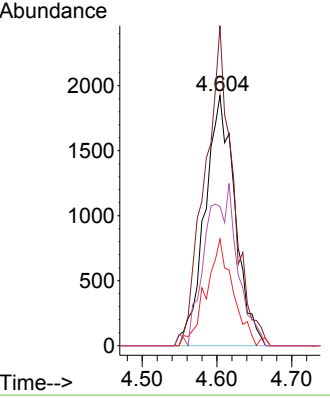
#20
Methylene Chloride
Concen: Below Cal
RT: 4.604 min Scan# 41
Delta R.T. 0.006 min
Lab File: VY019376.D
Acq: 29 Aug 2024 17:12

Instrument :
MSVOA_Y
ClientSampleId :



Tgt Ion: 84 Resp: 5389

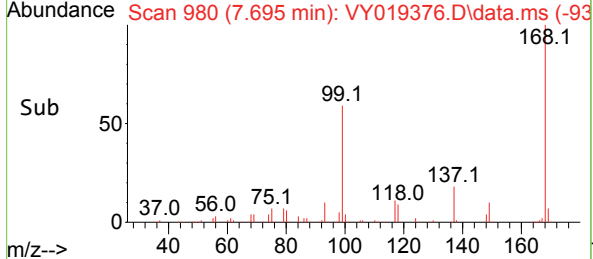
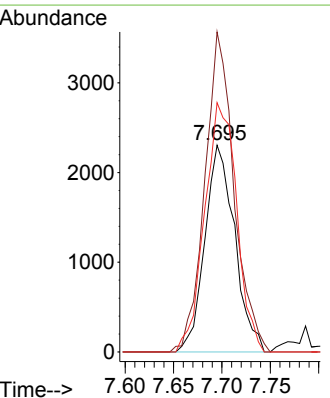
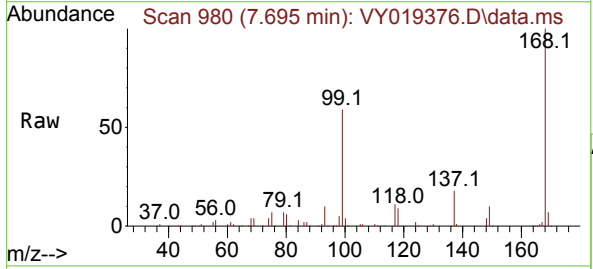
Ion	Ratio	Lower	Upper
84	100		
49	128.0	84.4	126.6#
51	42.6	26.0	39.0#
86	55.7	49.5	74.3

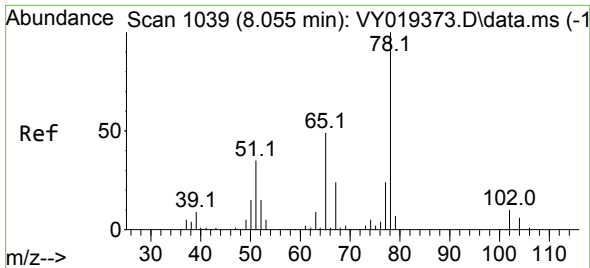


#31
Cyclohexane
Concen: 1.397 ug/l
RT: 7.695 min Scan# 980
Delta R.T. 0.006 min
Lab File: VY019376.D
Acq: 29 Aug 2024 17:12

Tgt Ion: 56 Resp: 4943

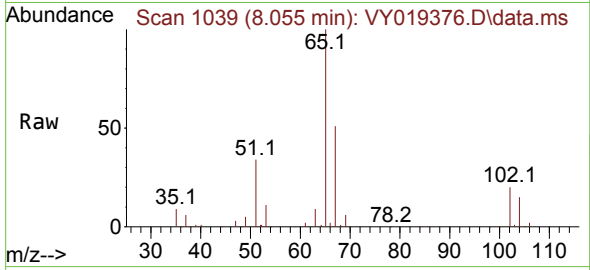
Ion	Ratio	Lower	Upper
56	100		
69	154.8	28.7	43.1#
84	120.6	77.7	116.5#



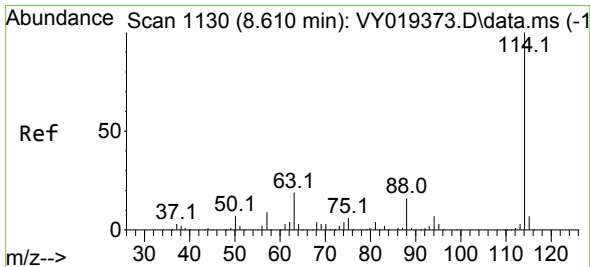
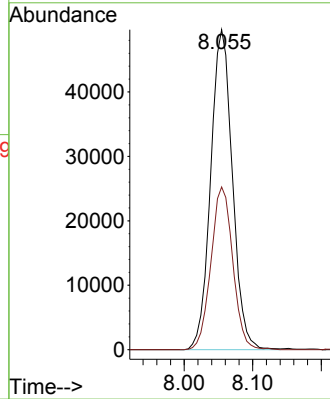
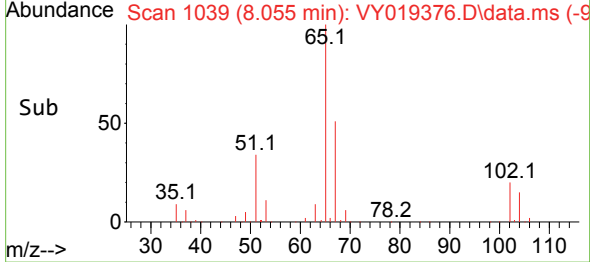


#33
 1,2-Dichloroethane-d4
 Concen: 52.532 ug/l
 RT: 8.055 min Scan# 1039
 Delta R.T. -0.000 min
 Lab File: VY019376.D
 Acq: 29 Aug 2024 17:12

Instrument : MSVOA_Y
 ClientSampleId :

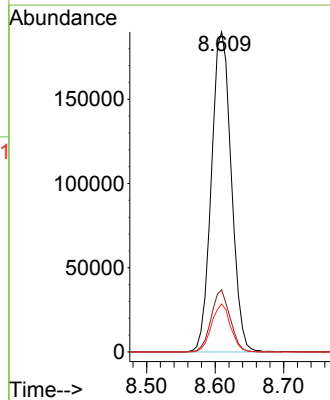
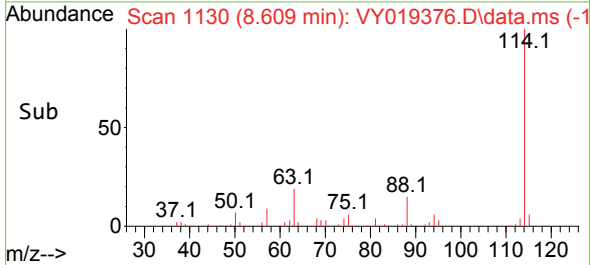
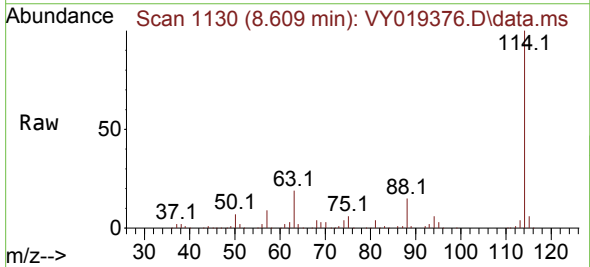


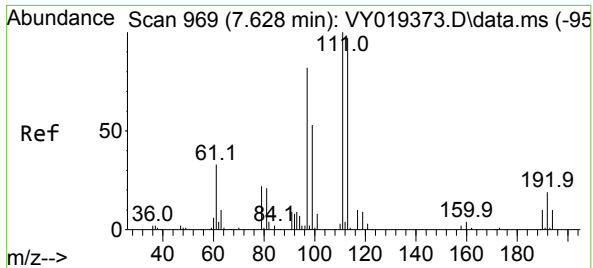
Tgt Ion: 65 Resp: 109290
 Ion Ratio Lower Upper
 65 100
 67 51.1 0.0 109.6



#34
 1,4-Difluorobenzene
 Concen: 50.000 ug/l
 RT: 8.609 min Scan# 1130
 Delta R.T. -0.000 min
 Lab File: VY019376.D
 Acq: 29 Aug 2024 17:12

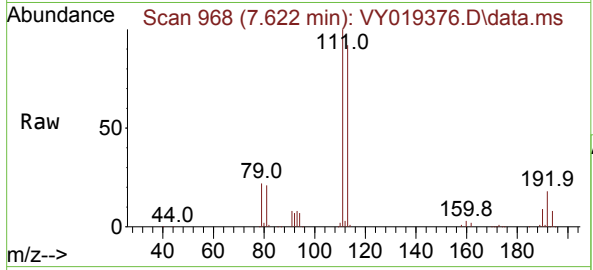
Tgt Ion: 114 Resp: 382273
 Ion Ratio Lower Upper
 114 100
 63 19.4 0.0 35.0
 88 15.0 0.0 27.2



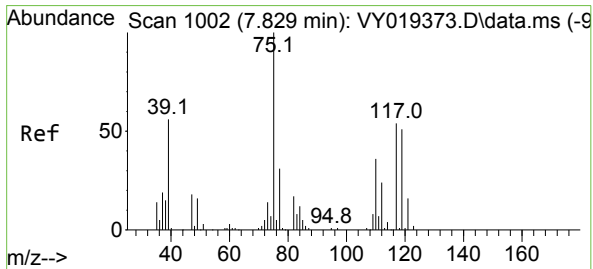
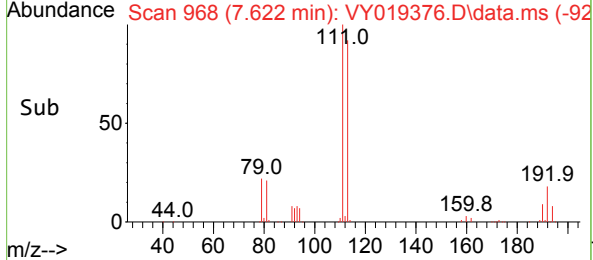
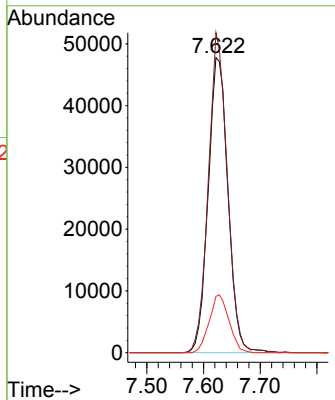


#35
 Dibromofluoromethane
 Concen: 47.867 ug/l
 RT: 7.622 min Scan# 901
 Delta R.T. -0.006 min
 Lab File: VY019376.D
 Acq: 29 Aug 2024 17:12

Instrument :
 MSVOA_Y
 ClientSampleId :

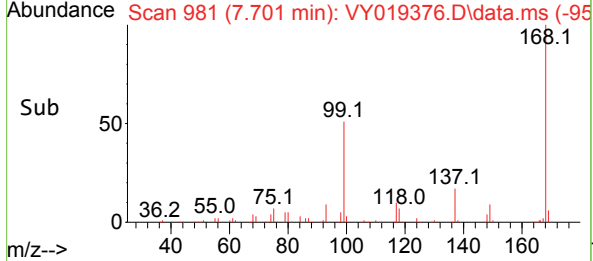
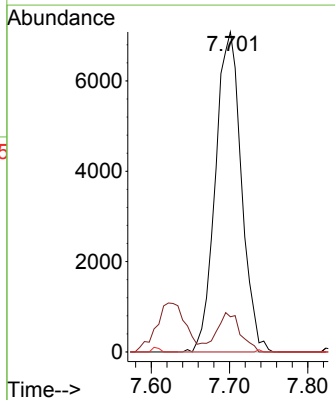
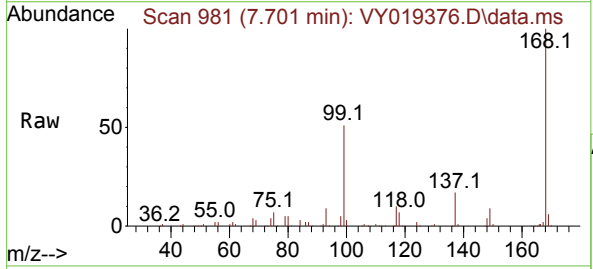


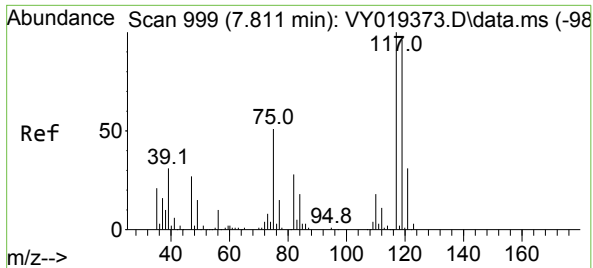
Tgt Ion:113 Resp: 115687
 Ion Ratio Lower Upper
 113 100
 111 104.6 82.2 123.4
 192 19.6 15.9 23.9



#36
 1,1-Dichloropropene
 Concen: 4.771 ug/l
 RT: 7.701 min Scan# 981
 Delta R.T. -0.128 min
 Lab File: VY019376.D
 Acq: 29 Aug 2024 17:12

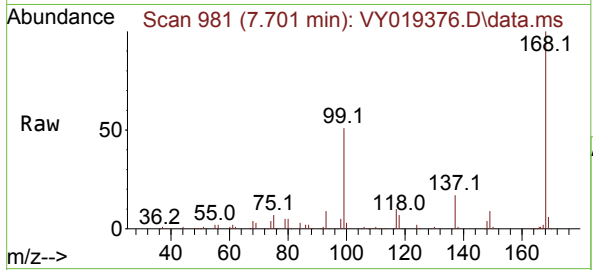
Tgt Ion: 75 Resp: 16295
 Ion Ratio Lower Upper
 75 100
 110 10.8 19.0 57.0#
 77 0.0 25.3 37.9#



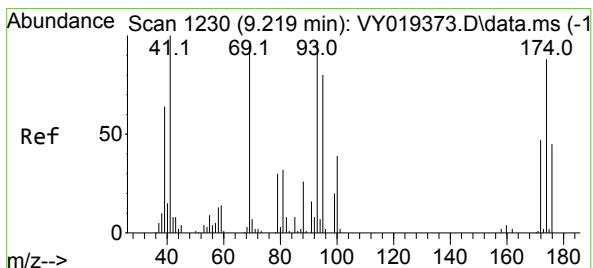
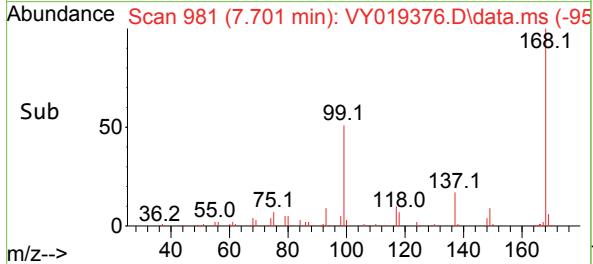
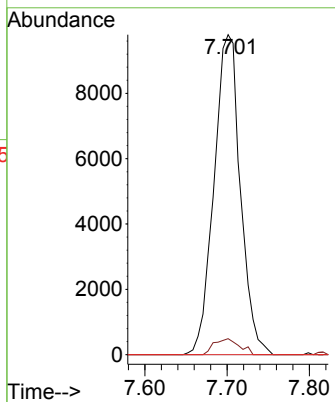


#38
 Carbon Tetrachloride
 Concen: 5.252 ug/l
 RT: 7.701 min Scan# 91
 Delta R.T. -0.110 min
 Lab File: VY019376.D
 Acq: 29 Aug 2024 17:12

Instrument :
 MSVOA_Y
 ClientSampleId :

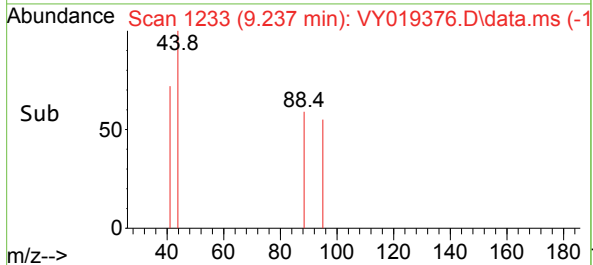
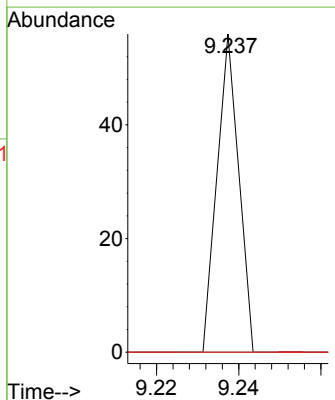
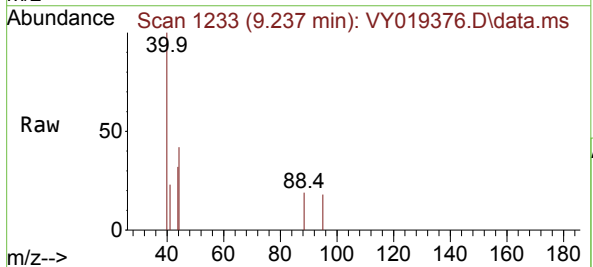


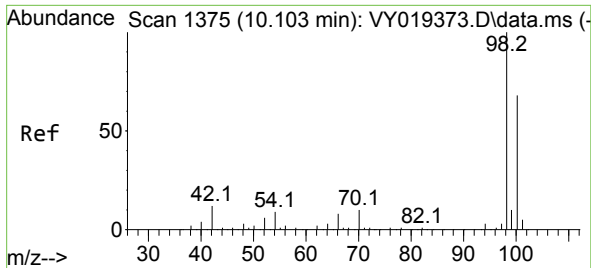
Tgt Ion:117 Resp: 21863
 Ion Ratio Lower Upper
 117 100
 119 5.0 75.8 113.6#
 121 0.0 24.0 36.0#



#49
 1,4-Dioxane
 Concen: 1.347 ug/l
 RT: 9.237 min Scan# 1233
 Delta R.T. 0.018 min
 Lab File: VY019376.D
 Acq: 29 Aug 2024 17:12

Tgt Ion: 88 Resp: 20
 Ion Ratio Lower Upper
 88 100
 43 0.0 0.0 0.0
 58 0.0 49.3 73.9#

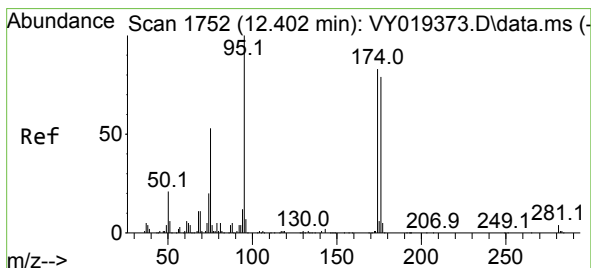
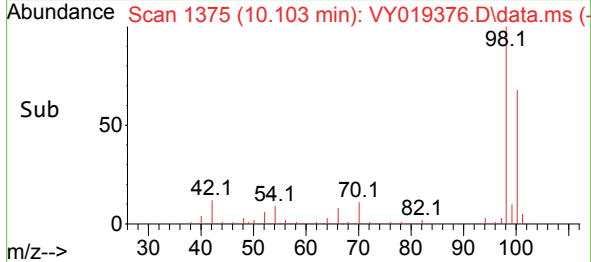
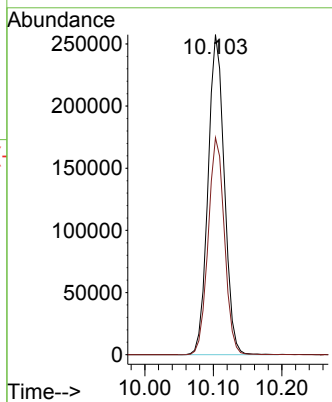
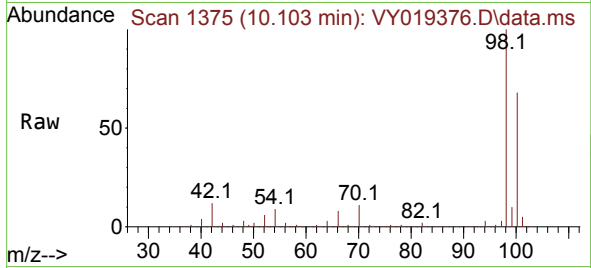




#50
 Toluene-d8
 Concen: 47.837 ug/l
 RT: 10.103 min Scan# 11
 Delta R.T. -0.000 min
 Lab File: VY019376.D
 Acq: 29 Aug 2024 17:12

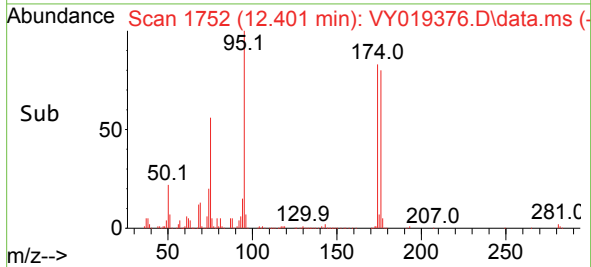
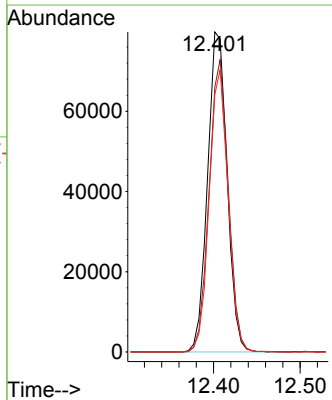
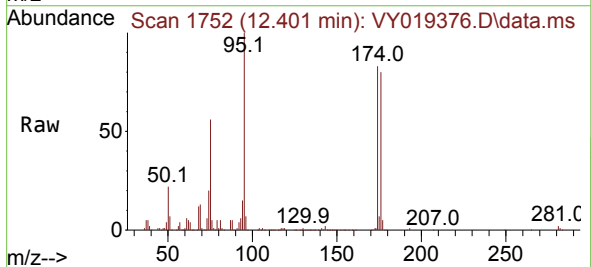
Instrument :
 MSVOA_Y
 ClientSampleId :

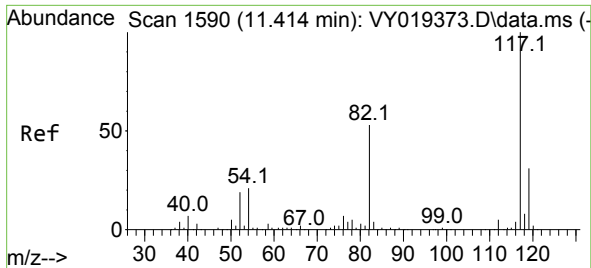
Tgt Ion: 98 Resp: 425603
 Ion Ratio Lower Upper
 98 100
 100 67.8 52.0 78.0



#62
 4-Bromofluorobenzene
 Concen: 43.454 ug/l
 RT: 12.401 min Scan# 1752
 Delta R.T. -0.000 min
 Lab File: VY019376.D
 Acq: 29 Aug 2024 17:12

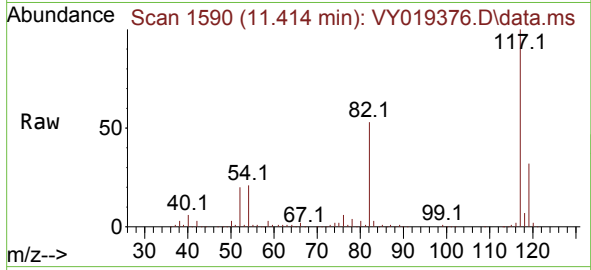
Tgt Ion: 95 Resp: 125044
 Ion Ratio Lower Upper
 95 100
 174 90.1 0.0 175.6
 176 85.5 0.0 171.4



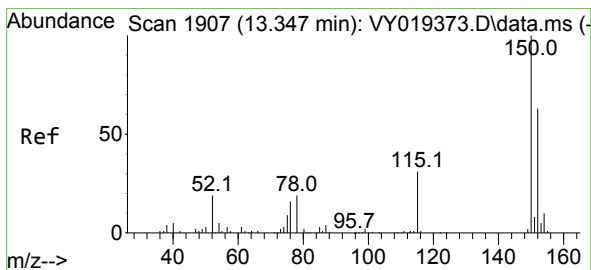
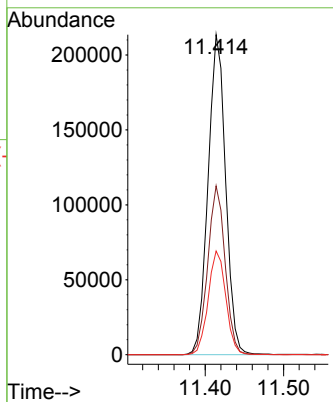
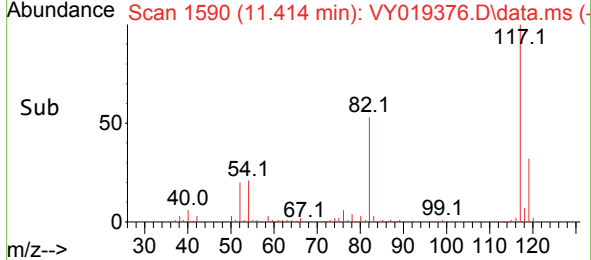


#63
 Chlorobenzene-d5
 Concen: 50.000 ug/l
 RT: 11.414 min Scan# 117
 Delta R.T. -0.000 min
 Lab File: VY019376.D
 Acq: 29 Aug 2024 17:12

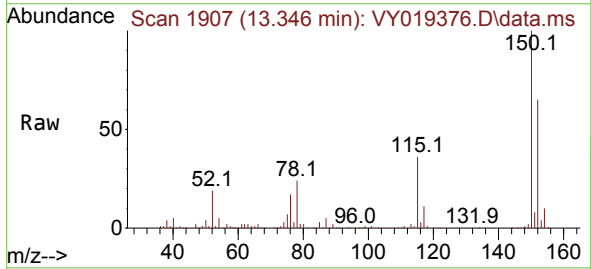
Instrument : MSVOA_Y
 ClientSampleId :



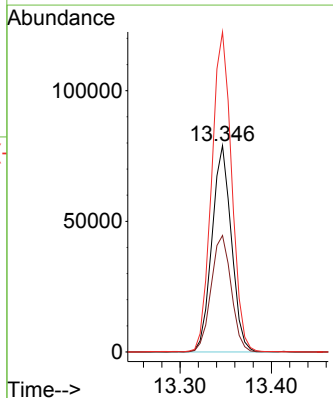
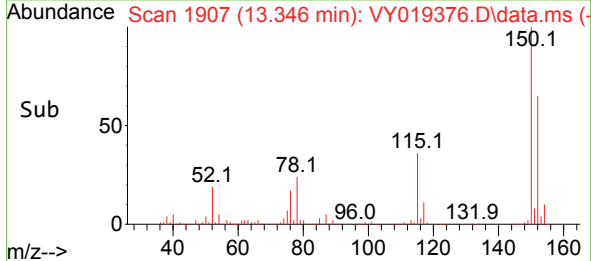
Tgt Ion:117 Resp: 332257
 Ion Ratio Lower Upper
 117 100
 82 52.7 42.4 63.6
 119 32.4 25.9 38.9

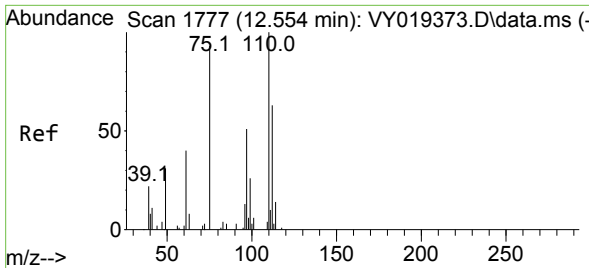


#72
 1,4-Dichlorobenzene-d4
 Concen: 50.000 ug/l
 RT: 13.346 min Scan# 1907
 Delta R.T. -0.000 min
 Lab File: VY019376.D
 Acq: 29 Aug 2024 17:12



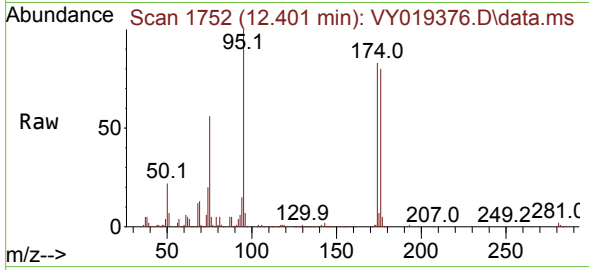
Tgt Ion:152 Resp: 116524
 Ion Ratio Lower Upper
 152 100
 115 58.6 28.2 84.7
 150 159.8 0.0 345.6



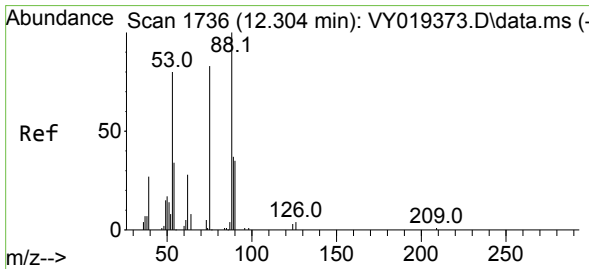
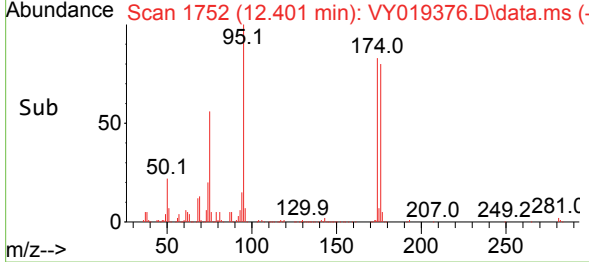
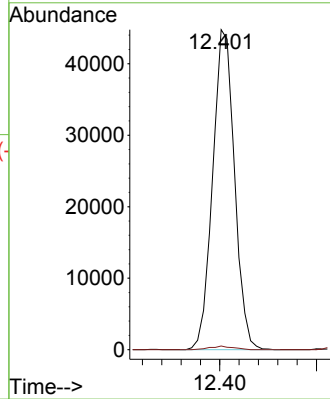


#76
 1,2,3-Trichloropropane
 Concen: 68.585 ug/l
 RT: 12.401 min Scan# 1752
 Delta R.T. -0.153 min
 Lab File: VY019376.D
 Acq: 29 Aug 2024 17:12

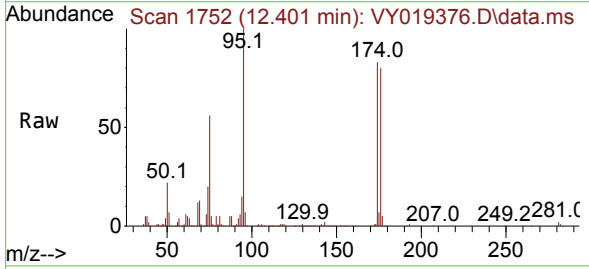
Instrument :
 MSVOA_Y
 ClientSampleId :



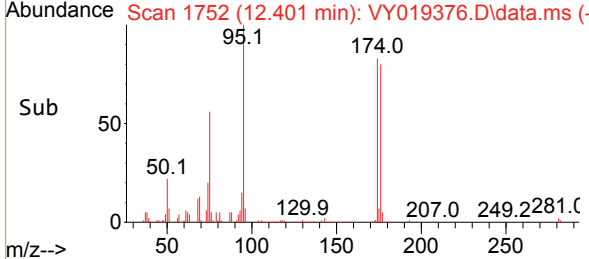
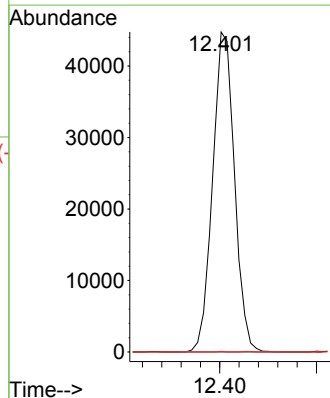
Tgt Ion: 75 Resp: 70184
 Ion Ratio Lower Upper
 75 100
 77 1.2 0.0 0.0#

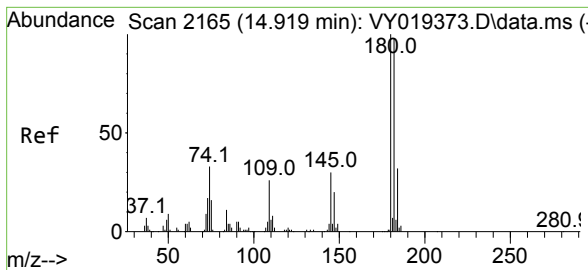


#81
 trans-1,4-Dichloro-2-butene
 Concen: 169.684 ug/l
 RT: 12.401 min Scan# 1752
 Delta R.T. 0.097 min
 Lab File: VY019376.D
 Acq: 29 Aug 2024 17:12



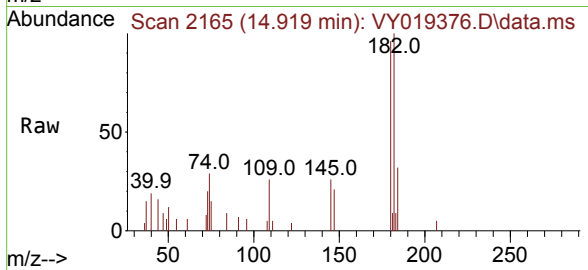
Tgt Ion: 75 Resp: 70184
 Ion Ratio Lower Upper
 75 100
 53 0.0 66.8 100.2#
 89 0.0 35.8 53.6#





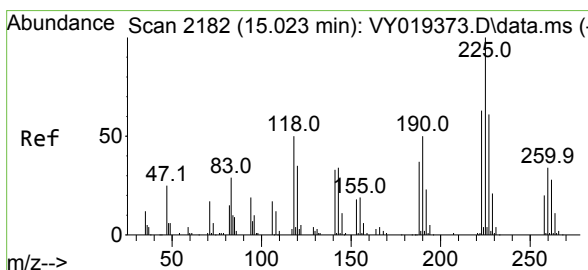
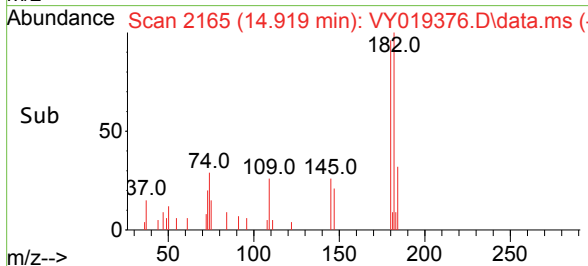
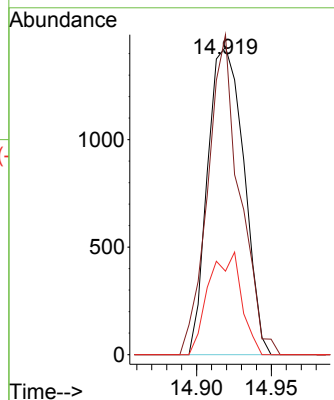
#93
 1,2,4-Trichlorobenzene
 Concen: 1.316 ug/l
 RT: 14.919 min Scan# 2165
 Delta R.T. -0.000 min
 Lab File: VY019376.D
 Acq: 29 Aug 2024 17:12

Instrument : MSVOA_Y
 ClientSampleId :



Tgt Ion:180 Resp: 2403

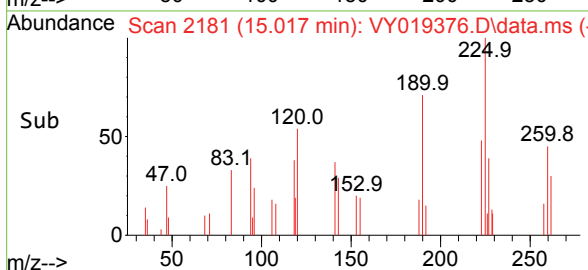
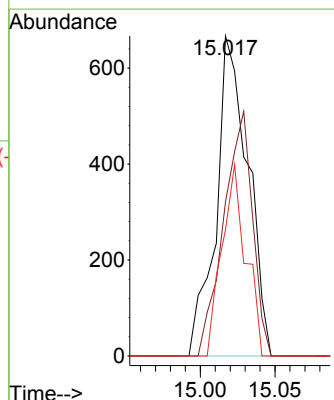
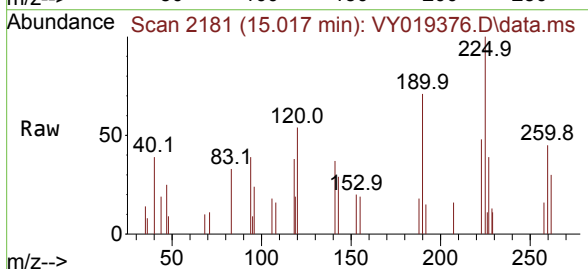
Ion	Ratio	Lower	Upper
180	100		
182	92.1	47.9	143.8
145	30.2	14.2	42.6

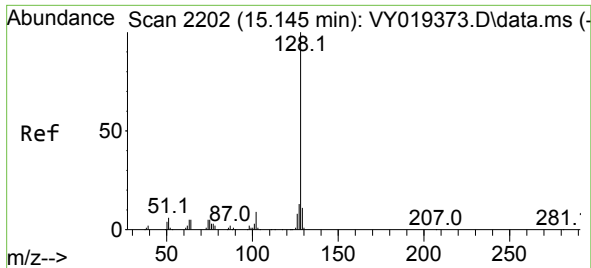


#94
 Hexachlorobutadiene
 Concen: 4.110 ug/l
 RT: 15.017 min Scan# 2181
 Delta R.T. -0.006 min
 Lab File: VY019376.D
 Acq: 29 Aug 2024 17:12

Tgt Ion:225 Resp: 988

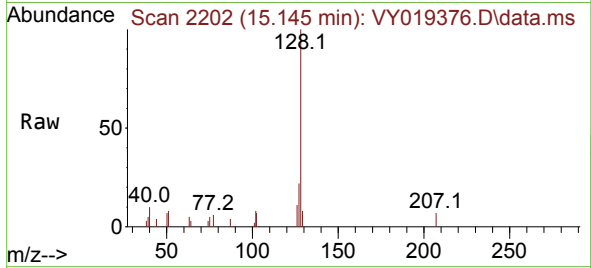
Ion	Ratio	Lower	Upper
225	100		
223	69.1	30.4	91.2
227	44.9	31.9	95.9



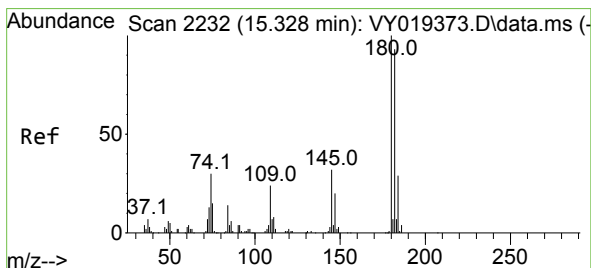
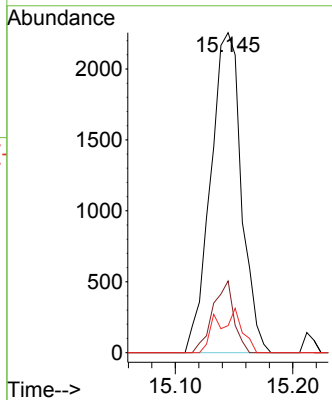
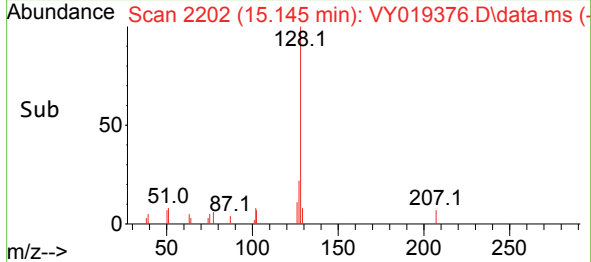


#95
 Naphthalene
 Concen: 1.375 ug/l
 RT: 15.145 min Scan# 2111
 Delta R.T. -0.000 min
 Lab File: VY019376.D
 Acq: 29 Aug 2024 17:12

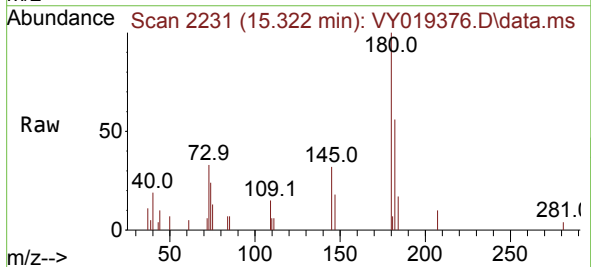
Instrument : MSVOA_Y
 ClientSampleId :



Tgt Ion:128 Resp: 4111
 Ion Ratio Lower Upper
 128 100
 127 15.3 10.6 16.0
 129 11.0 8.6 13.0



#96
 1,2,3-Trichlorobenzene
 Concen: 1.450 ug/l
 RT: 15.322 min Scan# 2231
 Delta R.T. -0.006 min
 Lab File: VY019376.D
 Acq: 29 Aug 2024 17:12



Tgt Ion:180 Resp: 2266
 Ion Ratio Lower Upper
 180 100
 182 88.7 47.6 142.9
 145 36.0 15.4 46.1

