

Data Path : Z:\voasrv\HPCHEM1\MSVOA\_Y\Data\VY083024\  
 Data File : VY019399.D  
 Acq On : 30 Aug 2024 16:36  
 Operator : SY/MD  
 Sample : P3793-01  
 Misc : 5.02g/5.0mL/MSVOA\_Y/SOIL/A  
 ALS Vial : 12 Sample Multiplier: 1

Instrument :  
 MSVOA\_Y  
 ClientSampleId :

Quant Time: Aug 30 23:17:04 2024  
 Quant Method : Z:\voasrv\HPCHEM1\MSVOA\_Y\methods\82Y082924S.M  
 Quant Title : SW846 8260  
 QLast Update : Fri Aug 30 02:45:30 2024  
 Response via : Initial Calibration

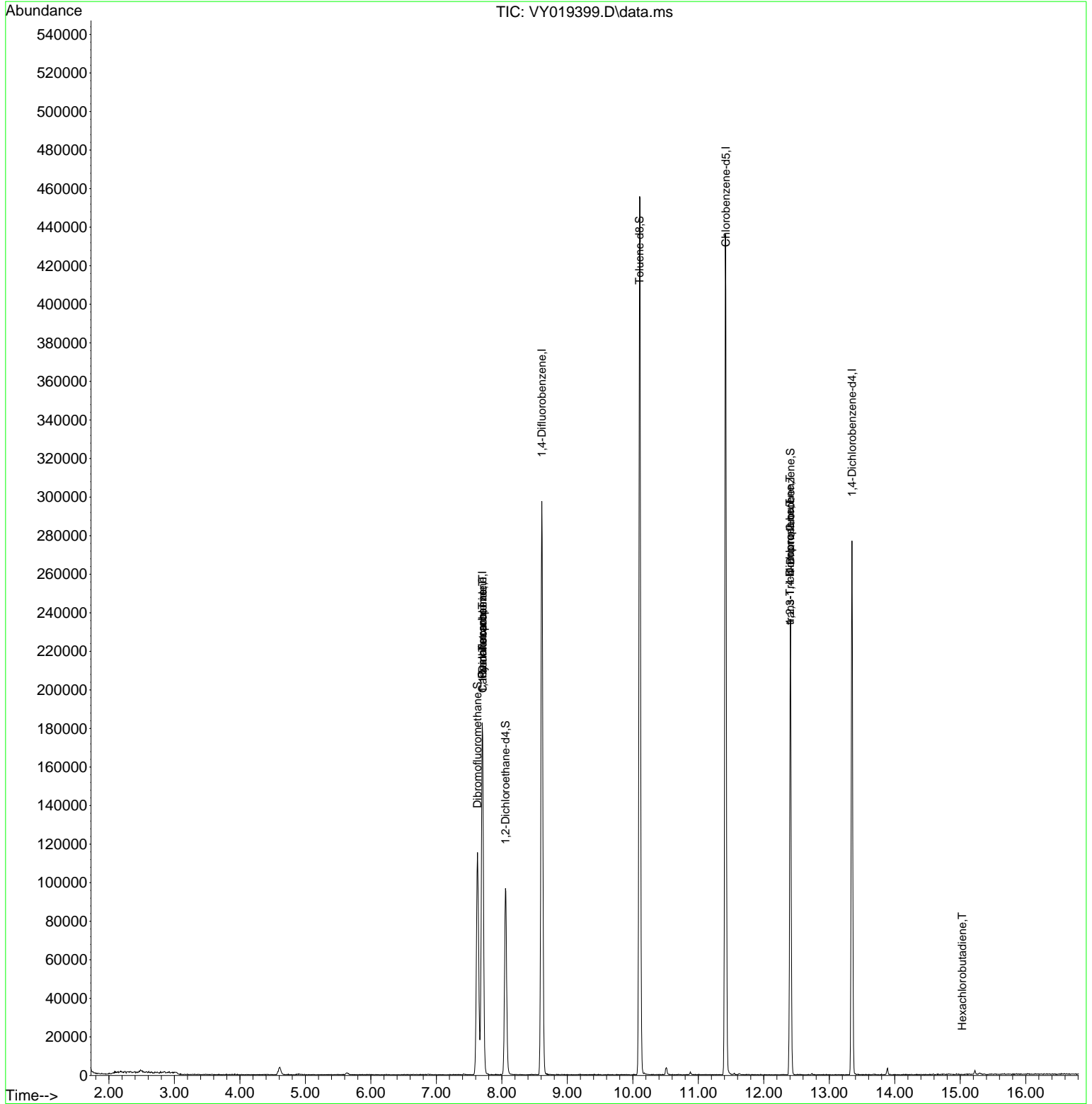
Compound	R.T.	QIon	Response	Conc	Units	Dev(Min)
-----						
Internal Standards						
1) Pentafluorobenzene	7.701	168	144509	50.000	ug/l	0.00
34) 1,4-Difluorobenzene	8.610	114	257938	50.000	ug/l	0.00
63) Chlorobenzene-d5	11.420	117	235974	50.000	ug/l	0.00
72) 1,4-Dichlorobenzene-d4	13.347	152	68319	50.000	ug/l	0.00
System Monitoring Compounds						
33) 1,2-Dichloroethane-d4	8.055	65	77165	56.376	ug/l	0.00
Spiked Amount	50.000	Range	50 - 163	Recovery	=	112.760%
35) Dibromofluoromethane	7.628	113	81566	50.017	ug/l	0.00
Spiked Amount	50.000	Range	54 - 147	Recovery	=	100.040%
50) Toluene-d8	10.103	98	292541	48.731	ug/l	0.00
Spiked Amount	50.000	Range	58 - 134	Recovery	=	97.460%
62) 4-Bromofluorobenzene	12.408	95	66041	34.013	ug/l	0.00
Spiked Amount	50.000	Range	29 - 146	Recovery	=	68.020%
Target Compounds						
					Qvalue	
5) Bromomethane	2.605	94	196	Below Cal	#	48
20) Methylene Chloride	4.610	84	2647	Below Cal	#	78
31) Cyclohexane	7.701	56	2891	1.242	ug/l #	12
36) 1,1-Dichloropropene	7.707	75	10736	4.659	ug/l #	49
38) Carbon Tetrachloride	7.707	117	13985	4.979	ug/l #	15
76) 1,2,3-Trichloropropane	12.402	75	35550	59.252	ug/l #	100
81) trans-1,4-Dichloro-2-b...	12.402	75	35550	146.594	ug/l #	16
94) Hexachlorobutadiene	15.029	225	44	3.574	ug/l #	19
-----						

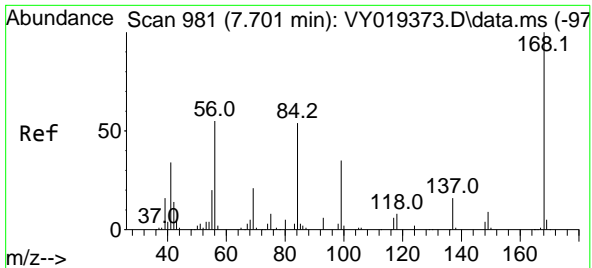
(#) = qualifier out of range (m) = manual integration (+) = signals summed

Data Path : Z:\voasrv\HPCHEM1\MSVOA\_Y\Data\VY083024\  
 Data File : VY019399.D  
 Acq On : 30 Aug 2024 16:36  
 Operator : SY/MD  
 Sample : P3793-01  
 Misc : 5.02g/5.0mL/MSVOA\_Y/SOIL/A  
 ALS Vial : 12 Sample Multiplier: 1

Instrument :  
 MSVOA\_Y  
 ClientSampleId :

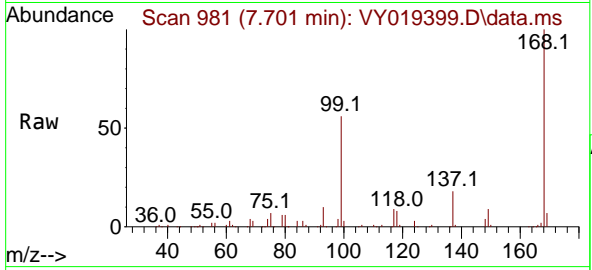
Quant Time: Aug 30 23:17:04 2024  
 Quant Method : Z:\voasrv\HPCHEM1\MSVOA\_Y\methods\82Y082924S.M  
 Quant Title : SW846 8260  
 QLast Update : Fri Aug 30 02:45:30 2024  
 Response via : Initial Calibration



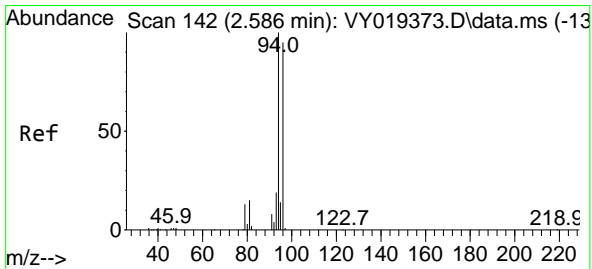
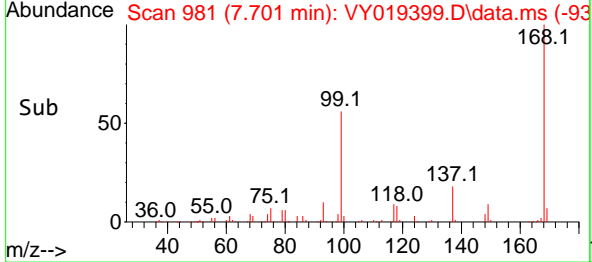
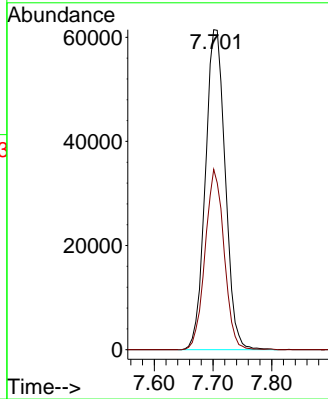


#1  
 Pentafluorobenzene  
 Concen: 50.000 ug/l  
 RT: 7.701 min Scan# 91  
 Delta R.T. 0.000 min  
 Lab File: VY019399.D  
 Acq: 30 Aug 2024 16:36

Instrument :  
 MSVOA\_Y  
 ClientSampleId :

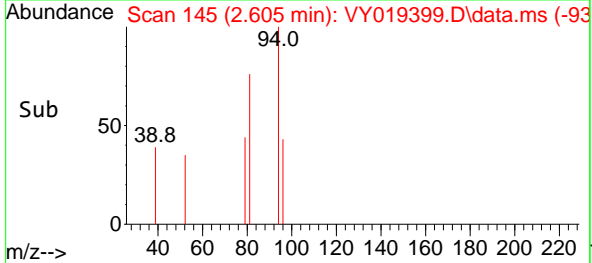
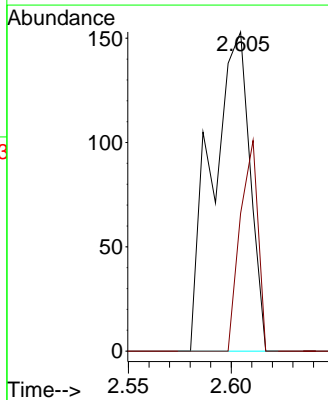
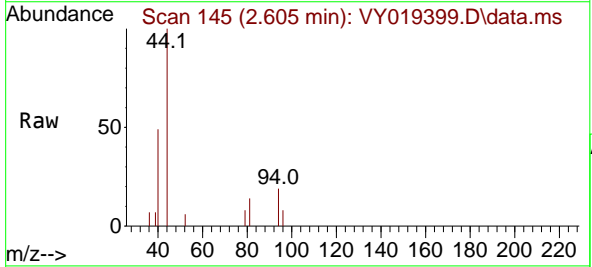


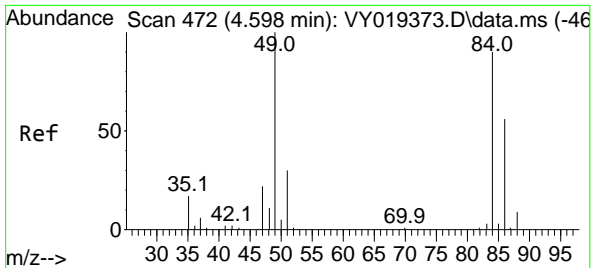
Tgt Ion:168 Resp: 144509  
 Ion Ratio Lower Upper  
 168 100  
 99 56.4 39.1 58.7



#5  
 Bromomethane  
 Concen: Below Cal  
 RT: 2.605 min Scan# 145  
 Delta R.T. 0.019 min  
 Lab File: VY019399.D  
 Acq: 30 Aug 2024 16:36

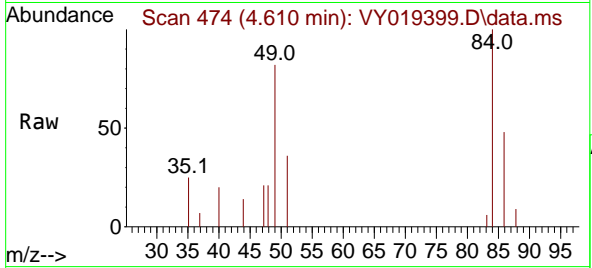
Tgt Ion: 94 Resp: 196  
 Ion Ratio Lower Upper  
 94 100  
 96 43.1 74.1 111.1#





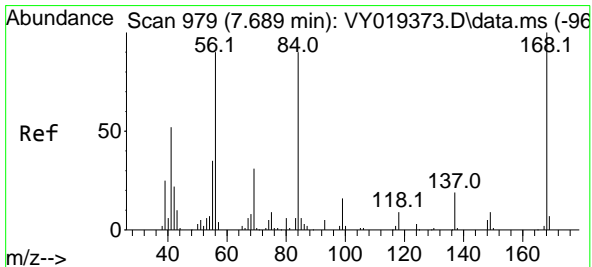
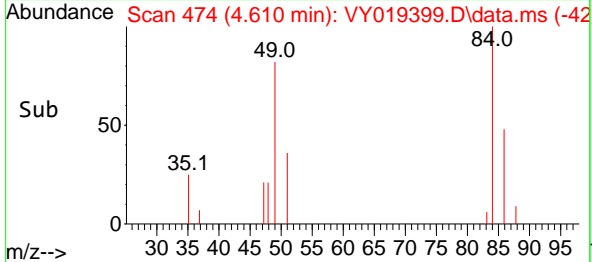
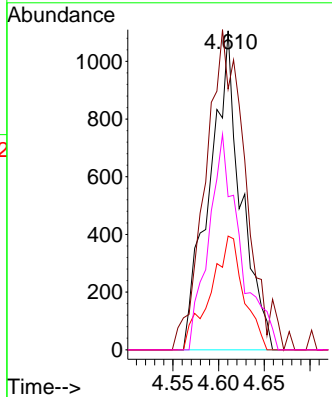
#20  
 Methylene Chloride  
 Concen: Below Cal  
 RT: 4.610 min Scan# 41  
 Delta R.T. 0.012 min  
 Lab File: VY019399.D  
 Acq: 30 Aug 2024 16:36

Instrument :  
 MSVOA\_Y  
 ClientSampleId :



Tgt Ion: 84 Resp: 2647

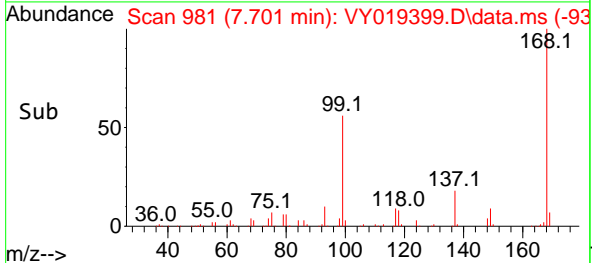
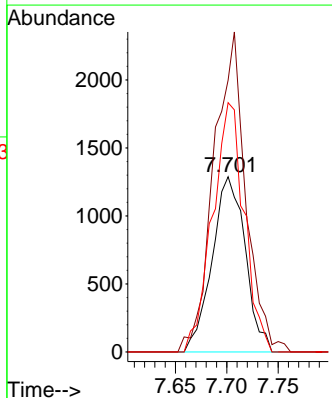
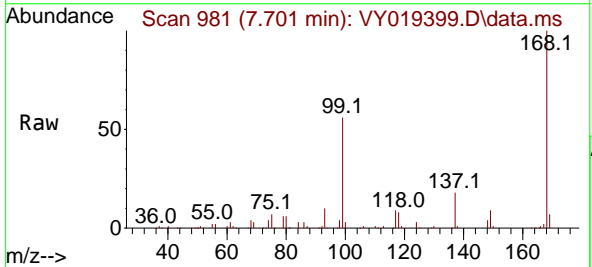
Ion	Ratio	Lower	Upper
84	100		
49	74.9	84.4	126.6#
51	35.6	26.0	39.0
86	48.0	49.5	74.3#

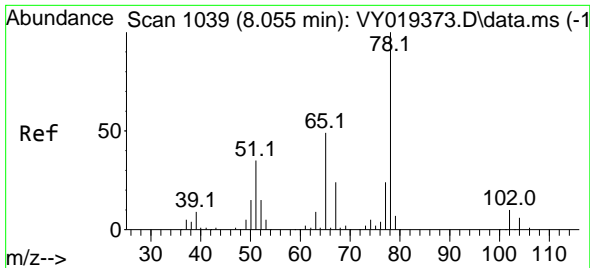


#31  
 Cyclohexane  
 Concen: 1.242 ug/l  
 RT: 7.701 min Scan# 981  
 Delta R.T. 0.012 min  
 Lab File: VY019399.D  
 Acq: 30 Aug 2024 16:36

Tgt Ion: 56 Resp: 2891

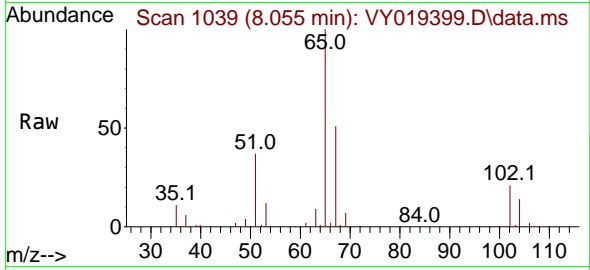
Ion	Ratio	Lower	Upper
56	100		
69	155.2	28.7	43.1#
84	142.3	77.7	116.5#



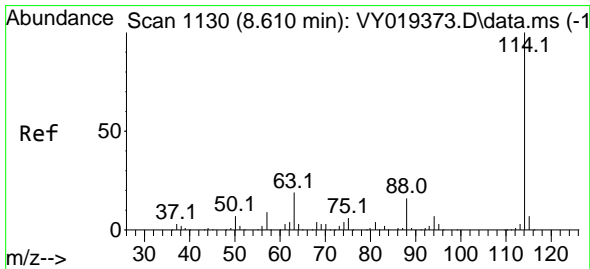
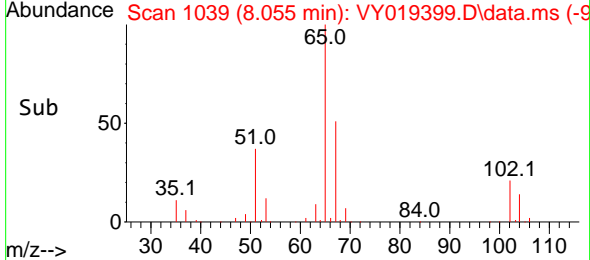
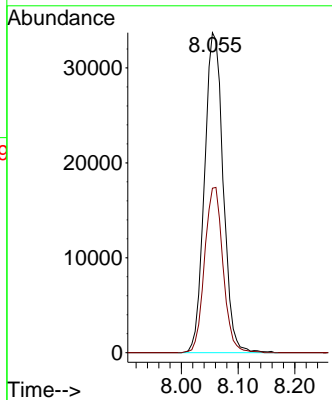


#33  
 1,2-Dichloroethane-d4  
 Concen: 56.376 ug/l  
 RT: 8.055 min Scan# 1039  
 Delta R.T. -0.000 min  
 Lab File: VY019399.D  
 Acq: 30 Aug 2024 16:36

Instrument : MSVOA\_Y  
 ClientSampleId :

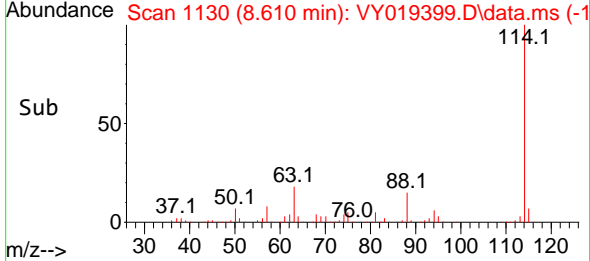
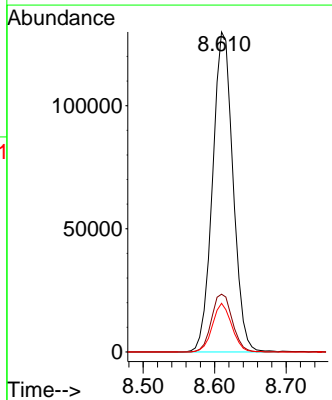
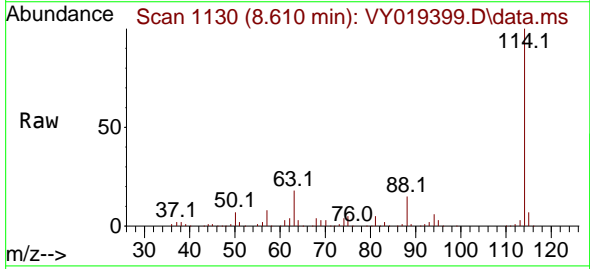


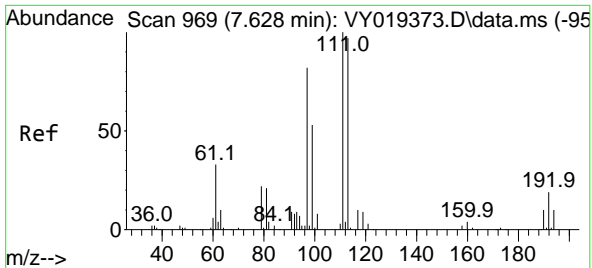
Tgt Ion: 65 Resp: 77165  
 Ion Ratio Lower Upper  
 65 100  
 67 51.1 0.0 109.6



#34  
 1,4-Difluorobenzene  
 Concen: 50.000 ug/l  
 RT: 8.610 min Scan# 1130  
 Delta R.T. -0.000 min  
 Lab File: VY019399.D  
 Acq: 30 Aug 2024 16:36

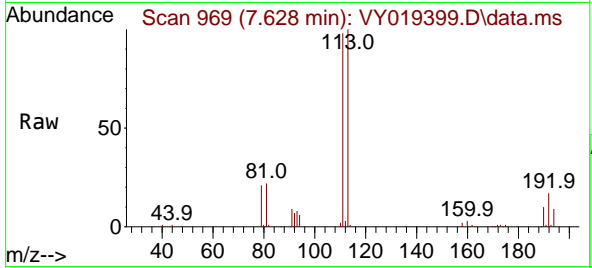
Tgt Ion: 114 Resp: 257938  
 Ion Ratio Lower Upper  
 114 100  
 63 18.1 0.0 35.0  
 88 15.2 0.0 27.2



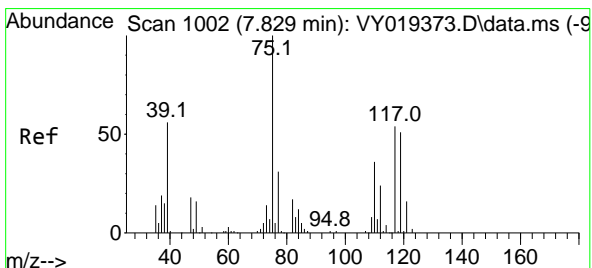
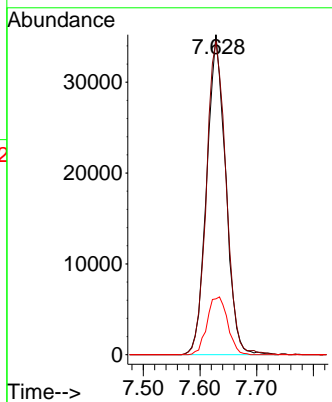
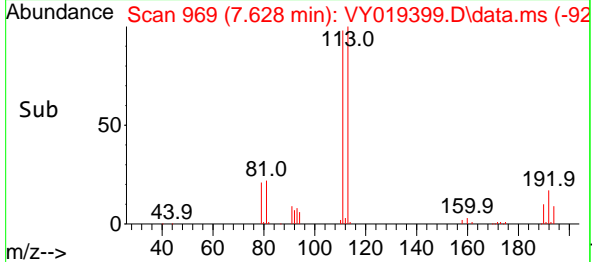


#35  
 Dibromofluoromethane  
 Concen: 50.017 ug/l  
 RT: 7.628 min Scan# 90  
 Delta R.T. -0.000 min  
 Lab File: VY019399.D  
 Acq: 30 Aug 2024 16:36

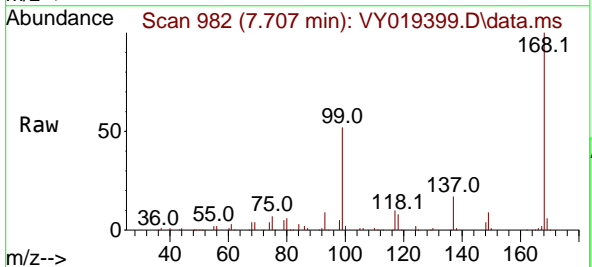
Instrument :  
 MSVOA\_Y  
 ClientSampleId :



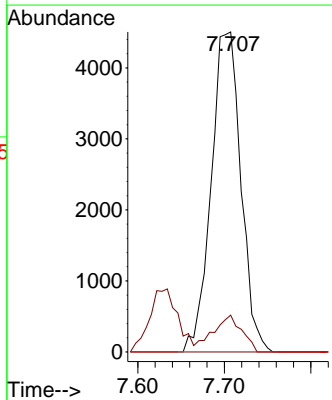
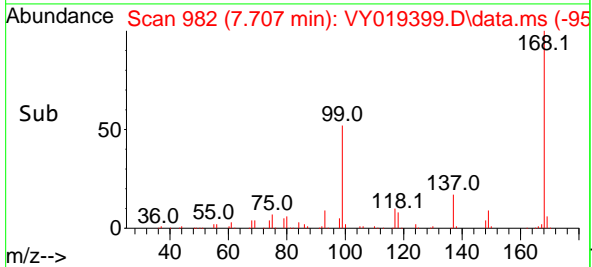
Tgt Ion:113 Resp: 81566  
 Ion Ratio Lower Upper  
 113 100  
 111 101.8 82.2 123.4  
 192 19.5 15.9 23.9

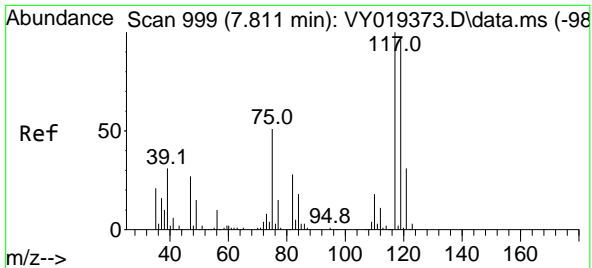


#36  
 1,1-Dichloropropene  
 Concen: 4.659 ug/l  
 RT: 7.707 min Scan# 982  
 Delta R.T. -0.122 min  
 Lab File: VY019399.D  
 Acq: 30 Aug 2024 16:36



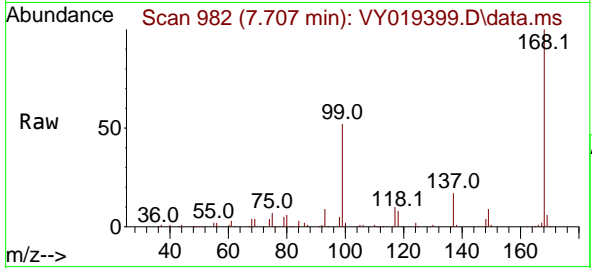
Tgt Ion: 75 Resp: 10736  
 Ion Ratio Lower Upper  
 75 100  
 110 10.6 19.0 57.0#  
 77 0.0 25.3 37.9#



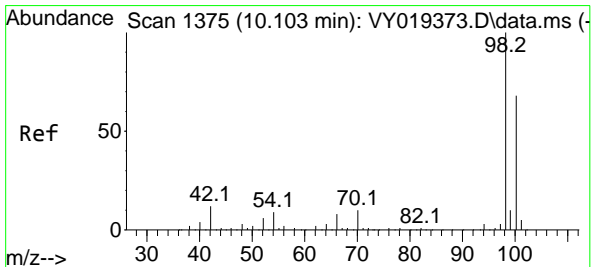
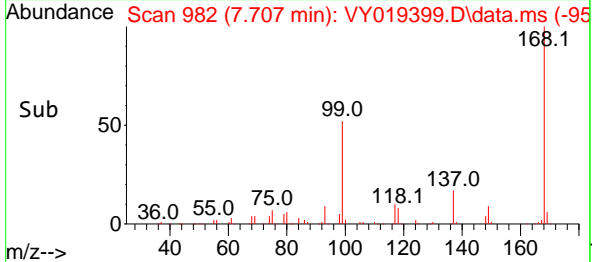
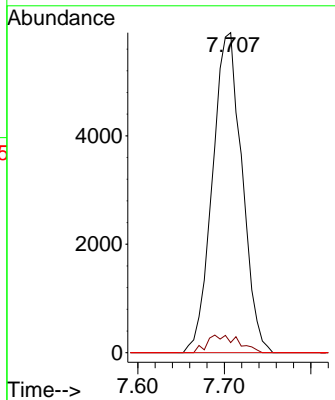


#38  
 Carbon Tetrachloride  
 Concen: 4.979 ug/l  
 RT: 7.707 min Scan# 91  
 Delta R.T. -0.104 min  
 Lab File: VY019399.D  
 Acq: 30 Aug 2024 16:36

Instrument :  
 MSVOA\_Y  
 ClientSampleId :

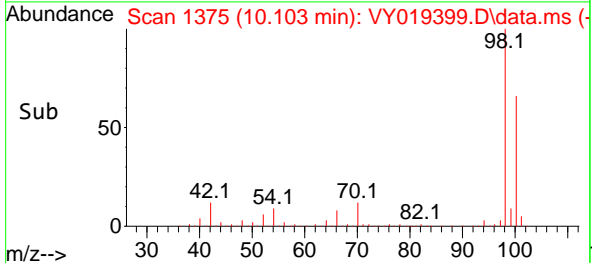
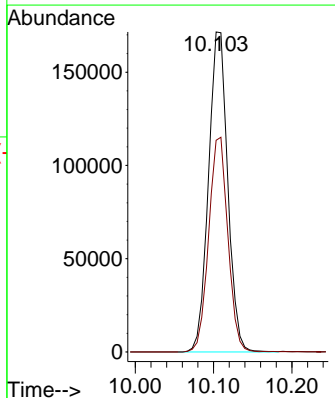
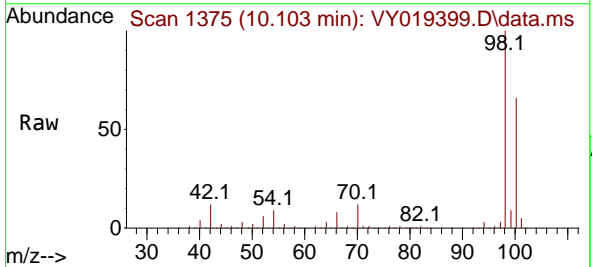


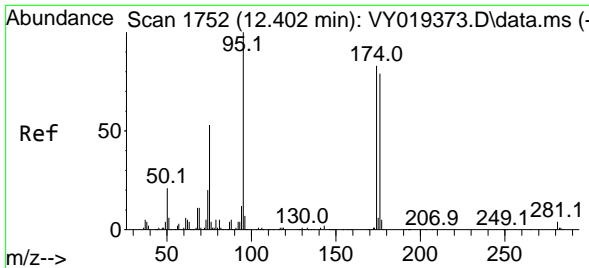
Tgt Ion:117 Resp: 13985  
 Ion Ratio Lower Upper  
 117 100  
 119 3.1 75.8 113.6#  
 121 0.0 24.0 36.0#



#50  
 Toluene-d8  
 Concen: 48.731 ug/l  
 RT: 10.103 min Scan# 1375  
 Delta R.T. -0.000 min  
 Lab File: VY019399.D  
 Acq: 30 Aug 2024 16:36

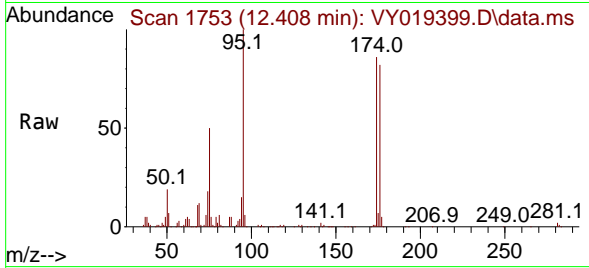
Tgt Ion: 98 Resp: 292541  
 Ion Ratio Lower Upper  
 98 100  
 100 67.1 52.0 78.0



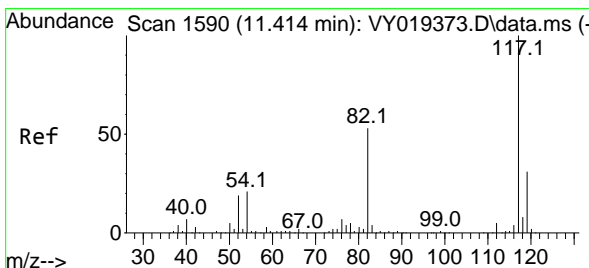
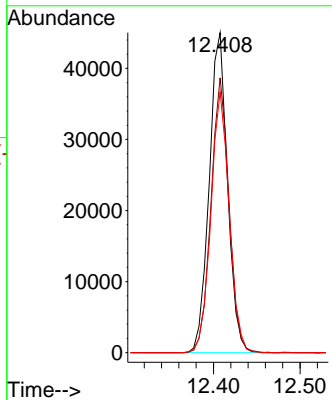
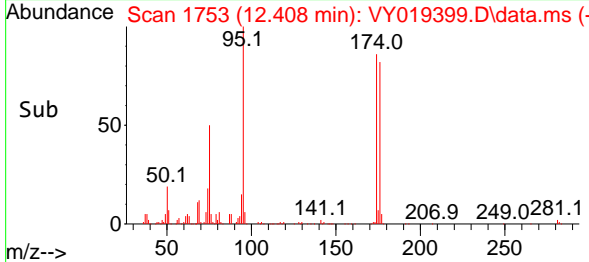


#62  
 4-Bromofluorobenzene  
 Concen: 34.013 ug/l  
 RT: 12.408 min Scan# 1753  
 Delta R.T. 0.006 min  
 Lab File: VY019399.D  
 Acq: 30 Aug 2024 16:36

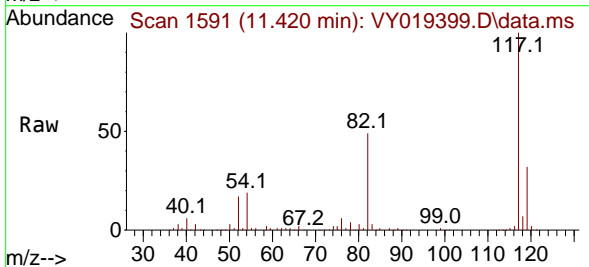
Instrument : MSVOA\_Y  
 ClientSampleId :



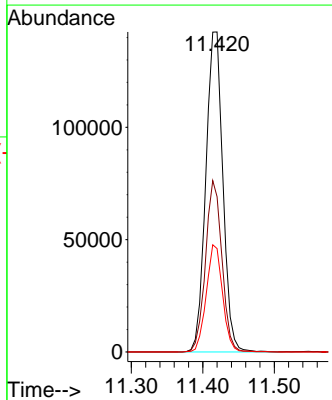
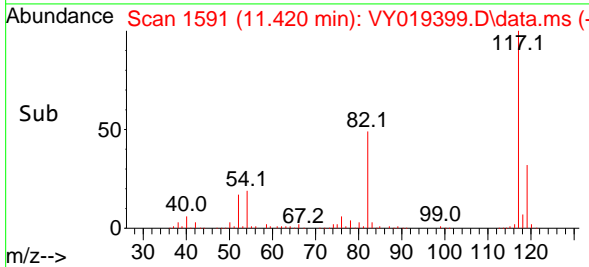
Tgt Ion: 95 Resp: 66041  
 Ion Ratio Lower Upper  
 95 100  
 174 84.8 0.0 175.6  
 176 81.8 0.0 171.4



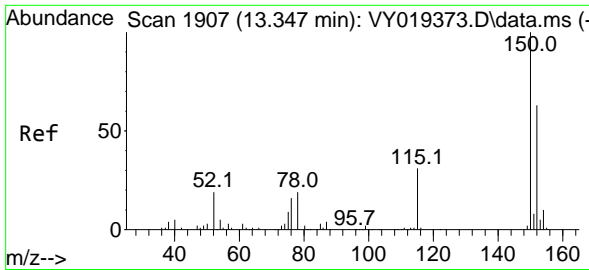
#63  
 Chlorobenzene-d5  
 Concen: 50.000 ug/l  
 RT: 11.420 min Scan# 1591  
 Delta R.T. 0.006 min  
 Lab File: VY019399.D  
 Acq: 30 Aug 2024 16:36



Tgt Ion: 117 Resp: 235974  
 Ion Ratio Lower Upper  
 117 100  
 82 48.5 42.4 63.6  
 119 32.3 25.9 38.9

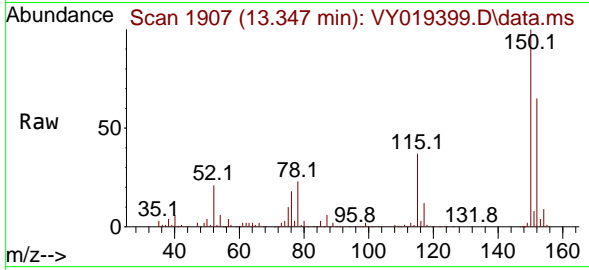




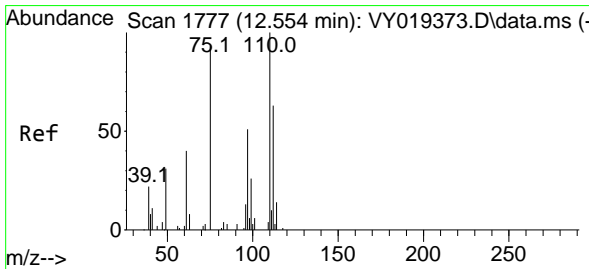
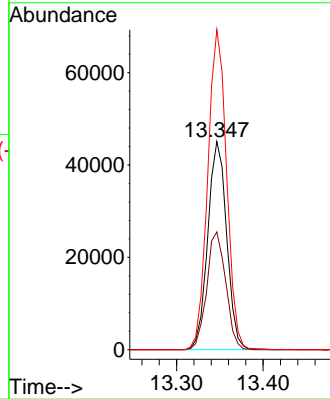
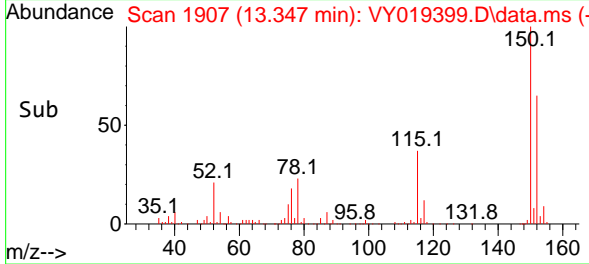


#72  
 1,4-Dichlorobenzene-d4  
 Concen: 50.000 ug/l  
 RT: 13.347 min Scan# 1752  
 Delta R.T. -0.000 min  
 Lab File: VY019399.D  
 Acq: 30 Aug 2024 16:36

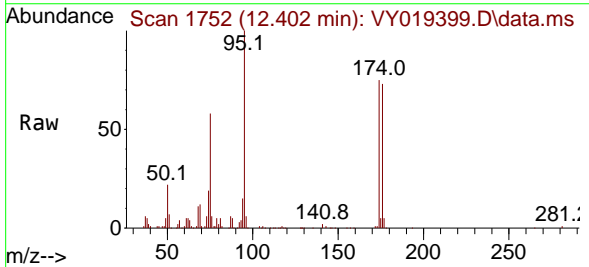
Instrument : MSVOA\_Y  
 ClientSampleId :



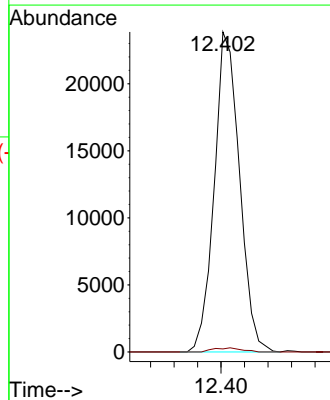
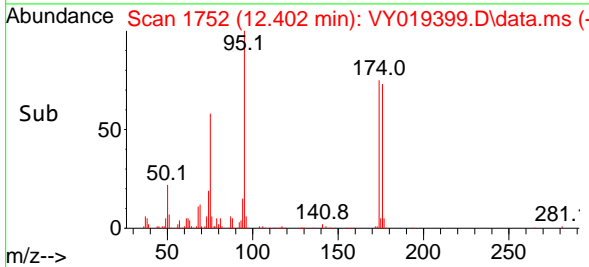
Tgt Ion:152 Resp: 68319  
 Ion Ratio Lower Upper  
 152 100  
 115 56.9 28.2 84.7  
 150 153.0 0.0 345.6

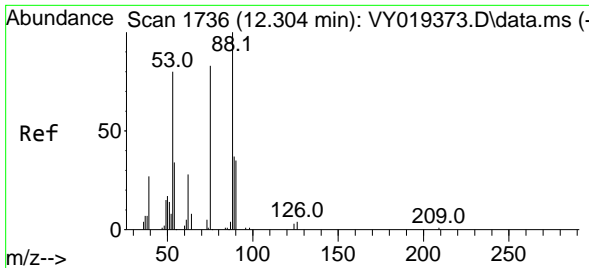


#76  
 1,2,3-Trichloropropane  
 Concen: 59.252 ug/l  
 RT: 12.402 min Scan# 1752  
 Delta R.T. -0.152 min  
 Lab File: VY019399.D  
 Acq: 30 Aug 2024 16:36



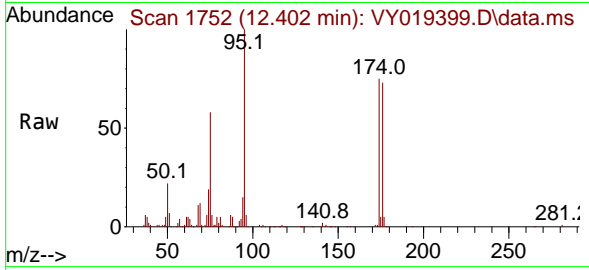
Tgt Ion: 75 Resp: 35550  
 Ion Ratio Lower Upper  
 75 100  
 77 1.5 0.0 0.0#



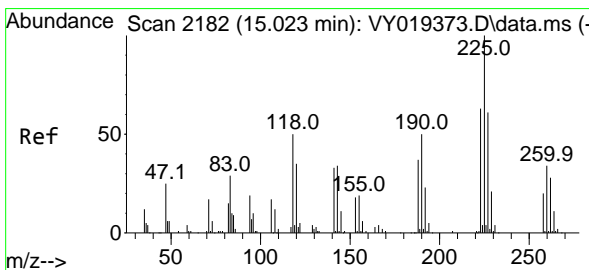
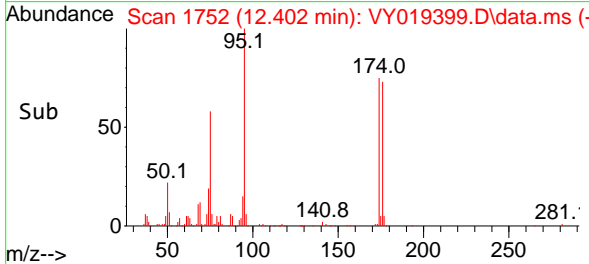
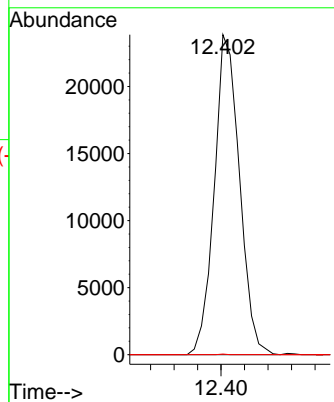


#81  
 trans-1,4-Dichloro-2-butene  
 Concen: 146.594 ug/l  
 RT: 12.402 min Scan# 1  
 Delta R.T. 0.098 min  
 Lab File: VY019399.D  
 Acq: 30 Aug 2024 16:36

Instrument :  
 MSVOA\_Y  
 ClientSampleId :



Tgt Ion: 75 Resp: 35550  
 Ion Ratio Lower Upper  
 75 100  
 53 0.0 66.8 100.2#  
 89 0.1 35.8 53.6#



#94  
 Hexachlorobutadiene  
 Concen: 3.574 ug/l  
 RT: 15.029 min Scan# 2183  
 Delta R.T. 0.006 min  
 Lab File: VY019399.D  
 Acq: 30 Aug 2024 16:36

Tgt Ion: 225 Resp: 44  
 Ion Ratio Lower Upper  
 225 100  
 223 0.0 30.4 91.2#  
 227 0.0 31.9 95.9#

