

Data Path : Z:\voasrv\HPCHEM1\MSVOA_Y\Data\VY090922\
 Data File : VY010431.D
 Acq On : 09 Sep 2022 20:29
 Operator : KP/MD
 Sample : N4530-07
 Misc : 5.05g/5.0mL/MSVOA_Y/SOIL
 ALS Vial : 25 Sample Multiplier: 1

Instrument :
 MSVOA_Y
 ClientSampleId :
 SB-20-7.5-8.0

Quant Time: Sep 10 00:00:49 2022
 Quant Method : Z:\voasrv\HPCHEM1\MSVOA_Y\methods\82Y090922S.M
 Quant Title : SW846 8260
 QLast Update : Fri Sep 09 17:08:30 2022
 Response via : Initial Calibration

Compound	R.T.	QIon	Response	Conc	Units	Dev(Min)

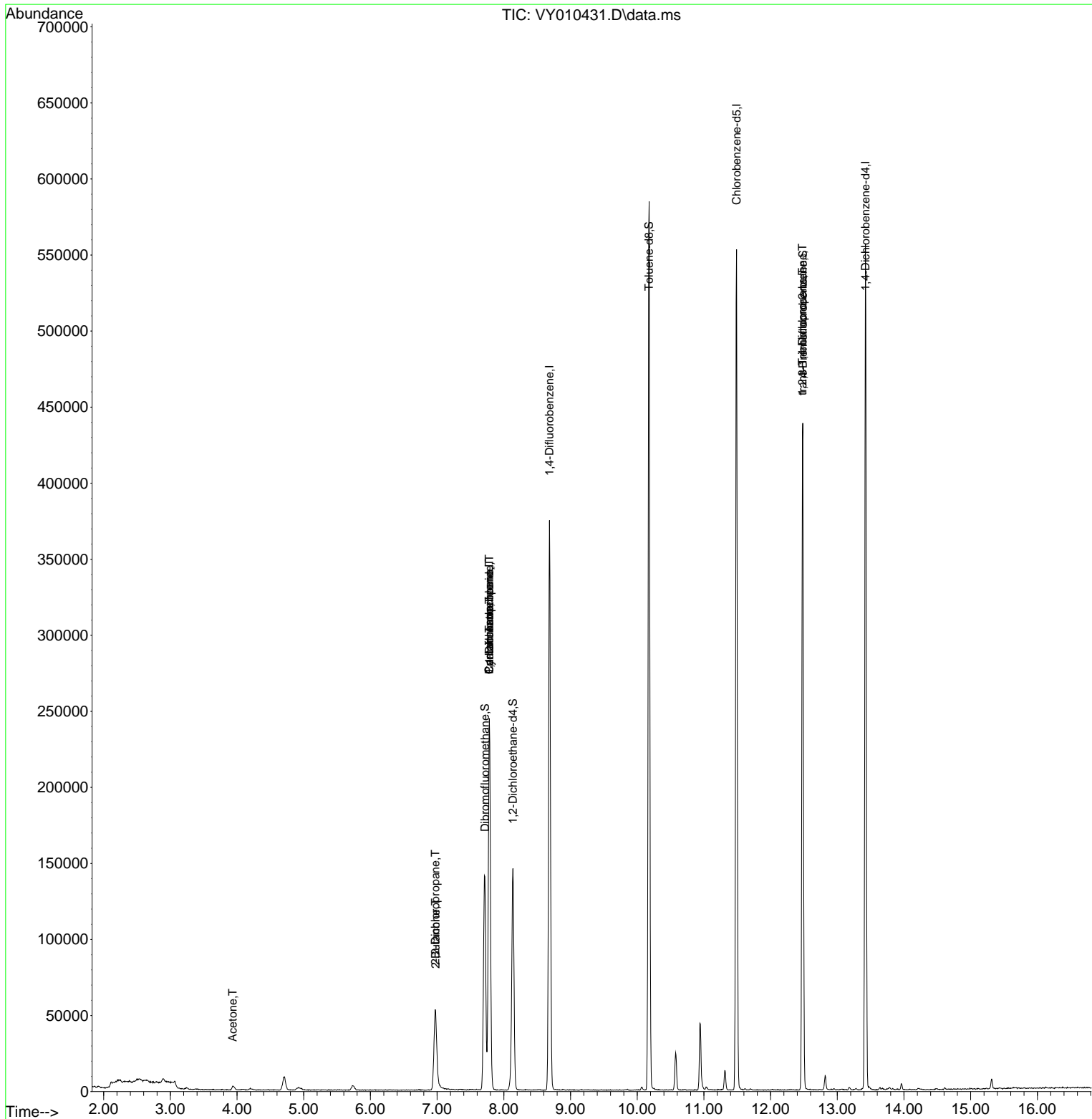
Internal Standards						
1) Pentafluorobenzene	7.783	168	197054	50.000	ug/l	0.00
34) 1,4-Difluorobenzene	8.685	114	326702	50.000	ug/l	0.00
63) Chlorobenzene-d5	11.489	117	309431	50.000	ug/l	0.00
72) 1,4-Dichlorobenzene-d4	13.422	152	144431	50.000	ug/l	0.00
System Monitoring Compounds						
33) 1,2-Dichloroethane-d4	8.136	65	110691	55.773	ug/l	0.00
Spiked Amount	50.000	Range	50 - 163	Recovery	=	111.540%
35) Dibromofluoromethane	7.716	113	101603	43.789	ug/l	0.00
Spiked Amount	50.000	Range	54 - 147	Recovery	=	87.580%
50) Toluene-d8	10.179	98	388814	51.705	ug/l	0.00
Spiked Amount	50.000	Range	49 - 140	Recovery	=	103.420%
62) 4-Bromofluorobenzene	12.483	95	132668	43.738	ug/l	0.00
Spiked Amount	50.000	Range	25 - 144	Recovery	=	87.480%
Target Compounds						
					Qvalue	
2) Dichlorodifluoromethane	1.900	85	50	Below Cal	#	43
11) Tert butyl alcohol	4.930	59	1404	Below Cal	#	77
16) Acetone	3.936	43	4287	9.412	ug/l #	74
20) Methylene Chloride	4.704	84	6608	Below Cal	#	74
25) 2-Butanone	6.978	43	2781	3.842	ug/l #	79
26) 2,2-Dichloropropane	6.972	77	4096	1.161	ug/l #	55
31) Cyclohexane	7.783	56	3798	1.133	ug/l #	1
36) 1,1-Dichloropropene	7.783	75	14044	4.421	ug/l #	51
38) Carbon Tetrachloride	7.783	117	19079	5.399	ug/l #	16
76) 1,2,3-Trichloropropane	12.477	75	67979	42.646	ug/l #	100
81) trans-1,4-Dichloro-2-b...	12.477	75	67979	94.689	ug/l #	7

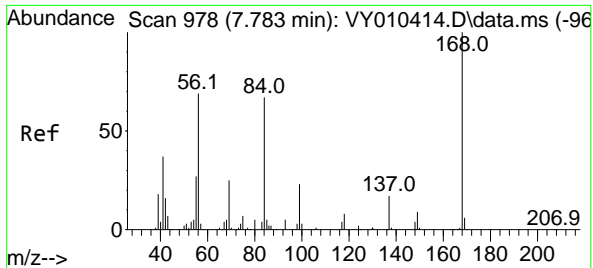
(#) = qualifier out of range (m) = manual integration (+) = signals summed

Data Path : Z:\voasrv\HPCHEM1\MSVOA_Y\Data\VY090922\
 Data File : VY010431.D
 Acq On : 09 Sep 2022 20:29
 Operator : KP/MD
 Sample : N4530-07
 Misc : 5.05g/5.0mL/MSVOA_Y/SOIL
 ALS Vial : 25 Sample Multiplier: 1

Instrument :
 MSVOA_Y
 ClientSampleId :
 SB-20-7.5-8.0

Quant Time: Sep 10 00:00:49 2022
 Quant Method : Z:\voasrv\HPCHEM1\MSVOA_Y\methods\82Y090922S.M
 Quant Title : SW846 8260
 QLast Update : Fri Sep 09 17:08:30 2022
 Response via : Initial Calibration

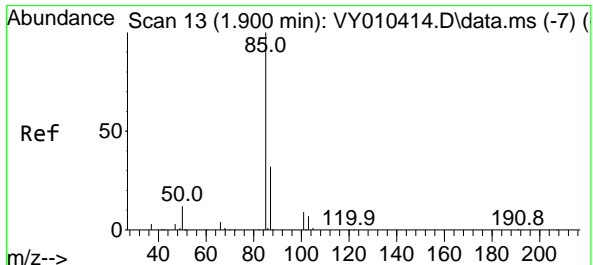
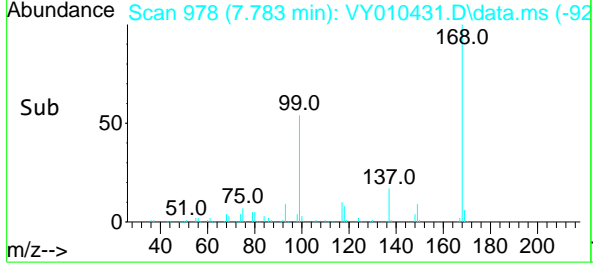
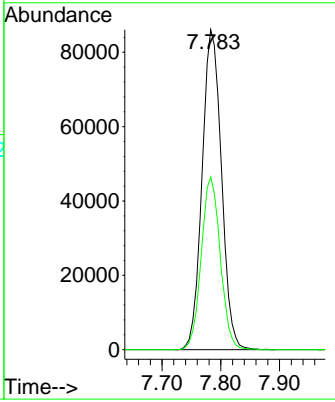
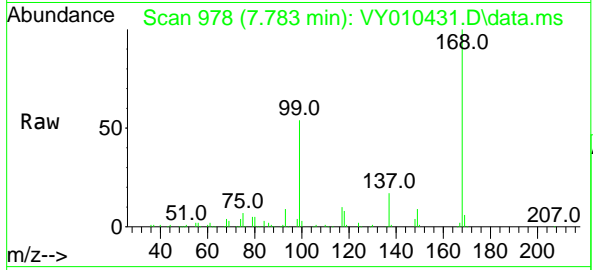




#1
 Pentafluorobenzene
 Concen: 50.000 ug/l
 RT: 7.783 min Scan# 91
 Delta R.T. -0.000 min
 Lab File: VY010431.D
 Acq: 09 Sep 2022 20:29

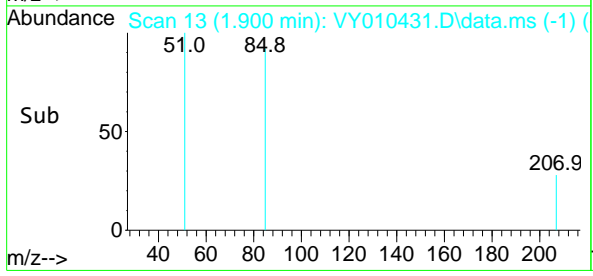
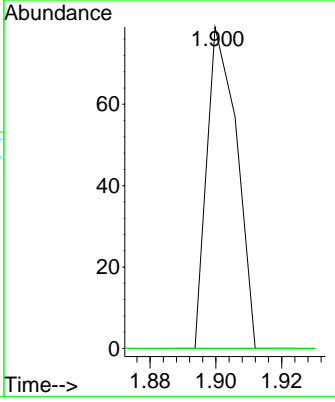
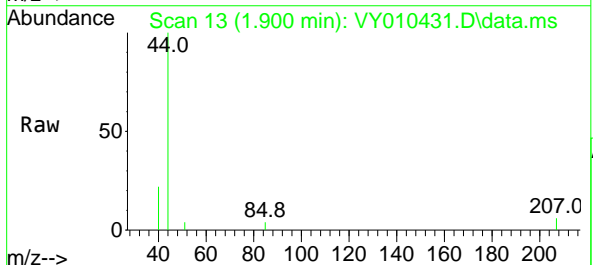
Instrument : MSVOA_Y
 ClientSampleId : SB-20-7.5-8.0

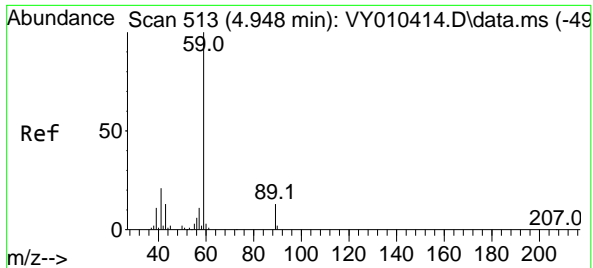
Tgt Ion:168 Resp: 197054
 Ion Ratio Lower Upper
 168 100
 99 54.0 46.9 70.3



#2
 Dichlorodifluoromethane
 Concen: Below Cal
 RT: 1.900 min Scan# 13
 Delta R.T. -0.000 min
 Lab File: VY010431.D
 Acq: 09 Sep 2022 20:29

Tgt Ion: 85 Resp: 50
 Ion Ratio Lower Upper
 85 100
 87 0.0 16.1 48.2#

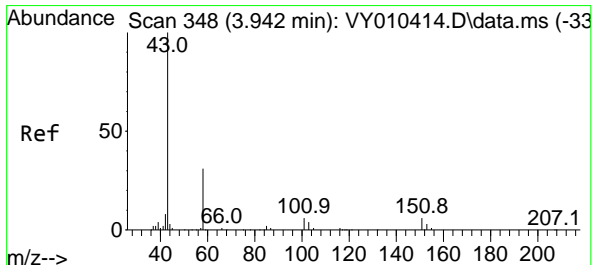
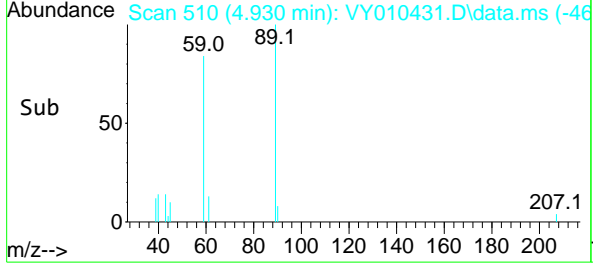
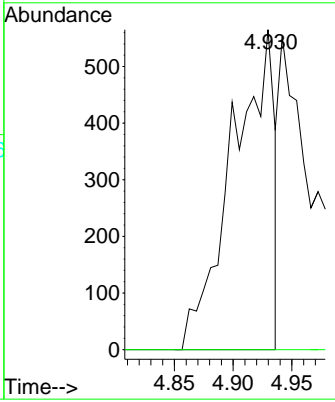
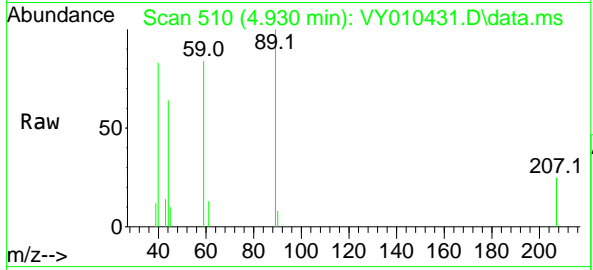




#11
 Tert butyl alcohol
 Concen: Below Cal
 RT: 4.930 min Scan# 51
 Delta R.T. -0.018 min
 Lab File: VY010431.D
 Acq: 09 Sep 2022 20:29

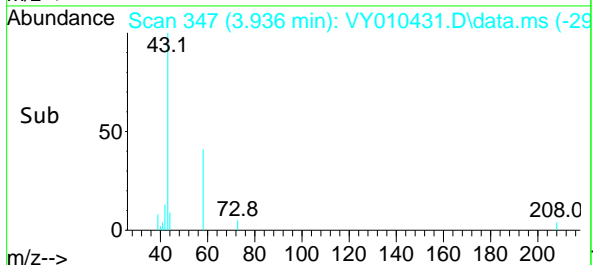
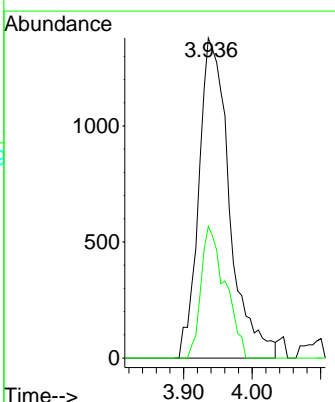
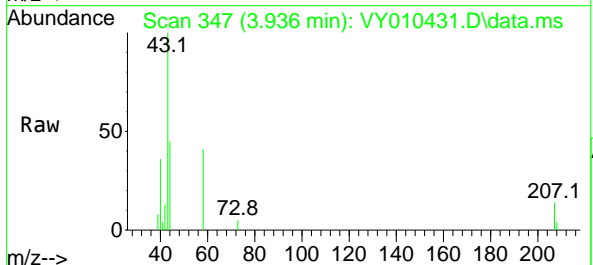
Instrument : MSVOA_Y
 ClientSampleId : SB-20-7.5-8.0

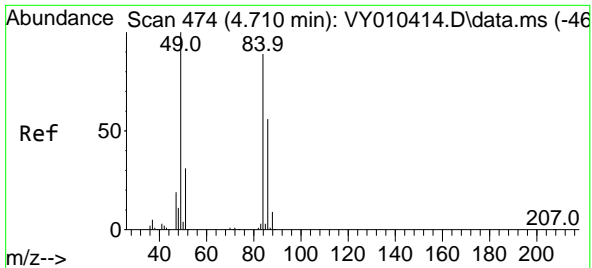
Tgt Ion: 59 Resp: 1404
 Ion Ratio Lower Upper
 59 100
 57 0.0 6.4 9.6#



#16
 Acetone
 Concen: 9.412 ug/l
 RT: 3.936 min Scan# 347
 Delta R.T. -0.006 min
 Lab File: VY010431.D
 Acq: 09 Sep 2022 20:29

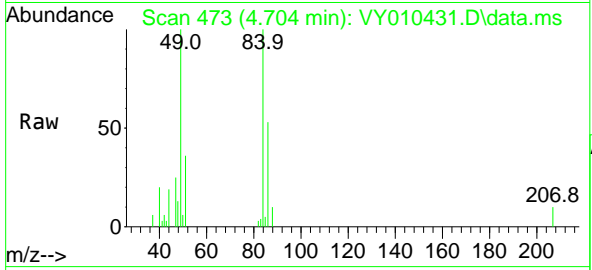
Tgt Ion: 43 Resp: 4287
 Ion Ratio Lower Upper
 43 100
 58 41.2 22.0 33.0#





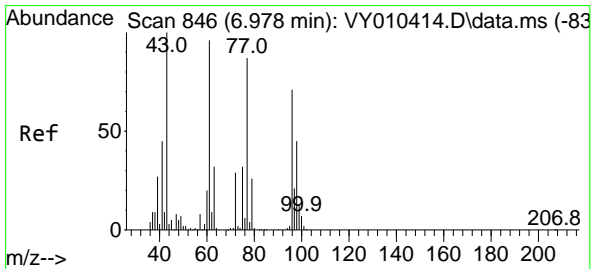
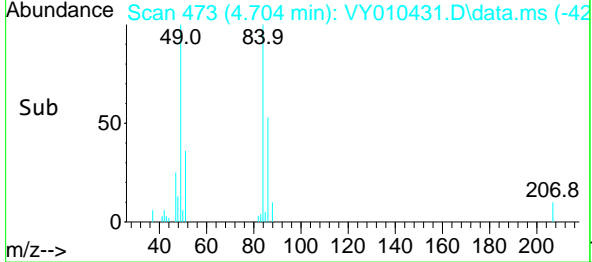
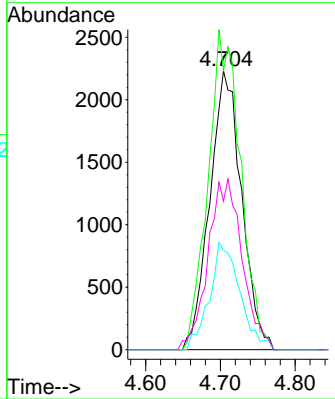
#20
 Methylene Chloride
 Concen: Below Cal
 RT: 4.704 min Scan# 41
 Delta R.T. -0.006 min
 Lab File: VY010431.D
 Acq: 09 Sep 2022 20:29

Instrument : MSVOA_Y
 ClientSampleId : SB-20-7.5-8.0



Tgt Ion: 84 Resp: 6608

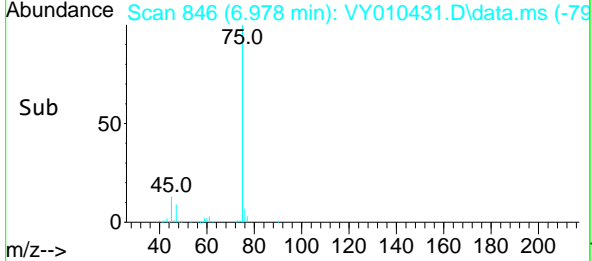
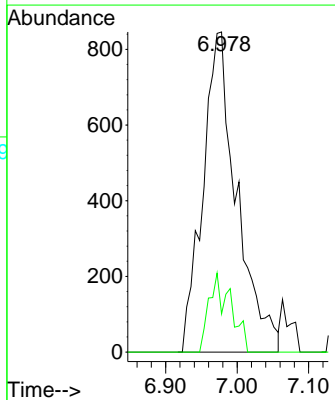
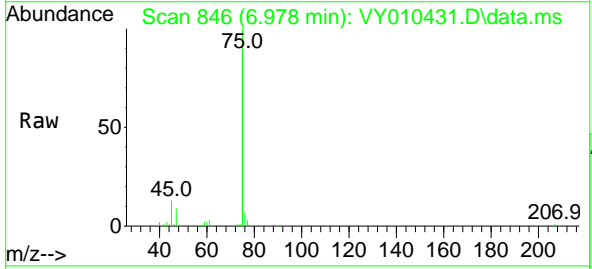
Ion	Ratio	Lower	Upper
84	100		
49	100.2	114.4	171.6#
51	35.6	35.3	52.9
86	53.2	53.7	80.5#

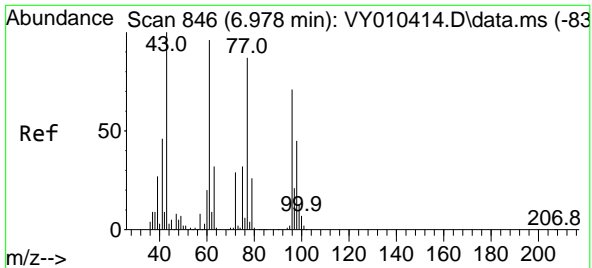


#25
 2-Butanone
 Concen: 3.842 ug/l
 RT: 6.978 min Scan# 846
 Delta R.T. 0.000 min
 Lab File: VY010431.D
 Acq: 09 Sep 2022 20:29

Tgt Ion: 43 Resp: 2781

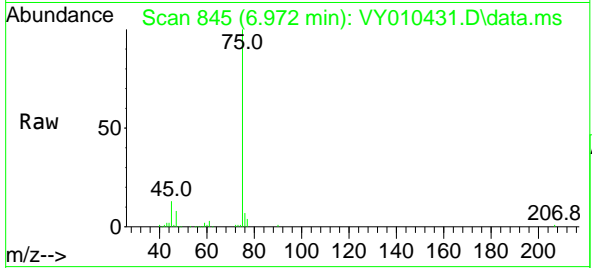
Ion	Ratio	Lower	Upper
43	100		
72	11.9	17.7	26.5#



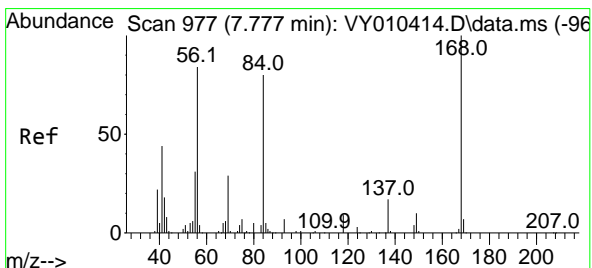
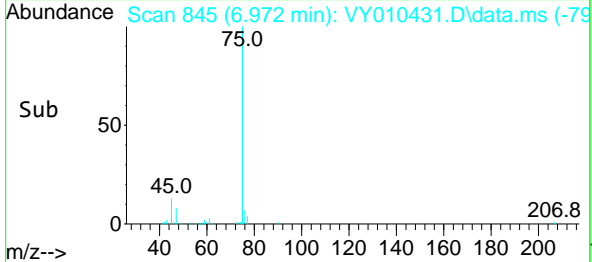
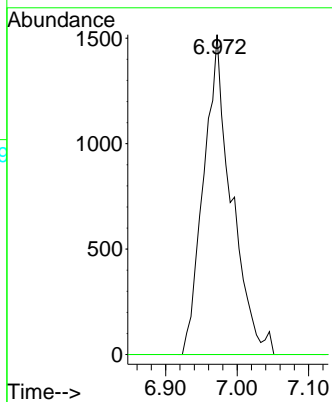


#26
 2,2-Dichloropropane
 Concen: 1.161 ug/l
 RT: 6.972 min Scan# 845
 Delta R.T. -0.006 min
 Lab File: VY010431.D
 Acq: 09 Sep 2022 20:29

Instrument : MSVOA_Y
 ClientSampleId : SB-20-7.5-8.0

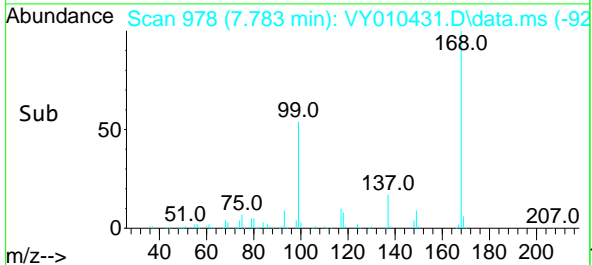
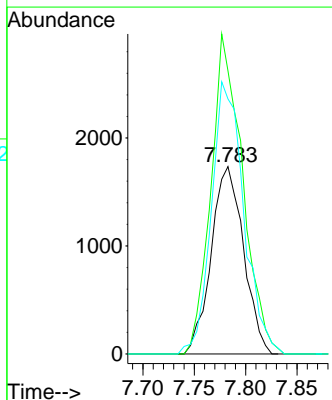
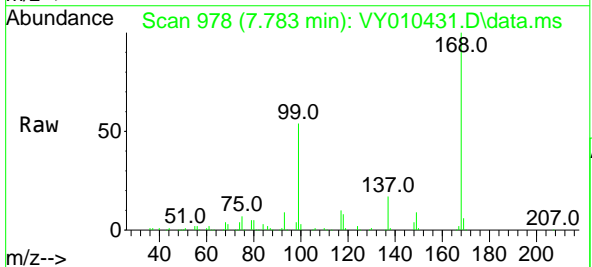


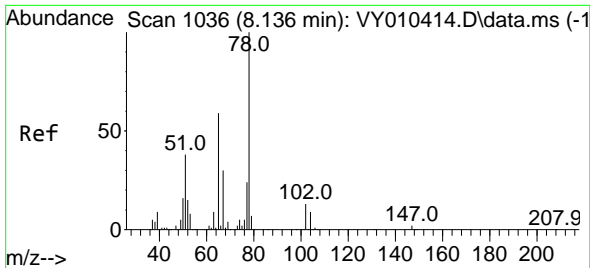
Tgt Ion: 77 Resp: 4096
 Ion Ratio Lower Upper
 77 100
 97 0.0 10.4 31.4#



#31
 Cyclohexane
 Concen: 1.133 ug/l
 RT: 7.783 min Scan# 978
 Delta R.T. 0.006 min
 Lab File: VY010431.D
 Acq: 09 Sep 2022 20:29

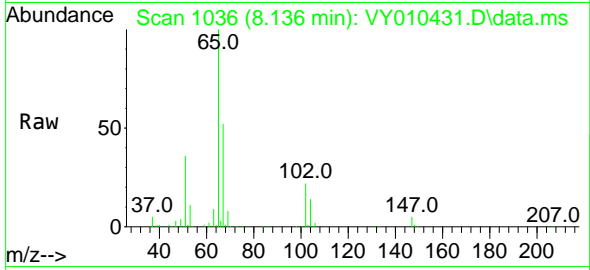
Tgt Ion: 56 Resp: 3798
 Ion Ratio Lower Upper
 56 100
 69 151.1 26.7 40.1#
 84 136.1 67.2 100.8#



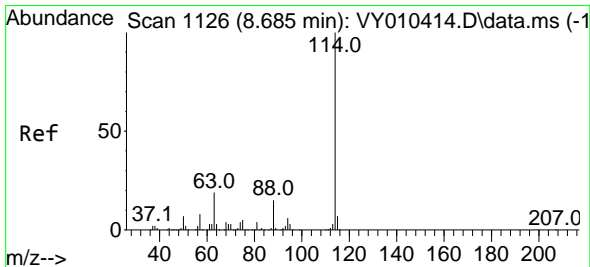
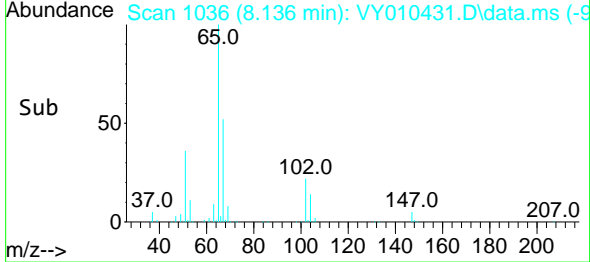
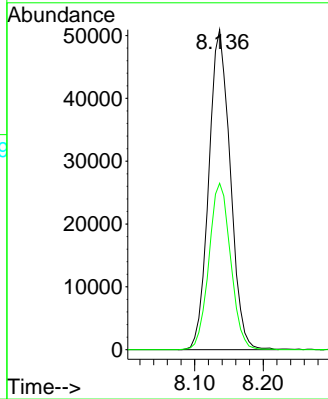


#33
 1,2-Dichloroethane-d4
 Concen: 55.773 ug/l
 RT: 8.136 min Scan# 1106
 Delta R.T. 0.000 min
 Lab File: VY010431.D
 Acq: 09 Sep 2022 20:29

Instrument : MSVOA_Y
 ClientSampleId : SB-20-7.5-8.0

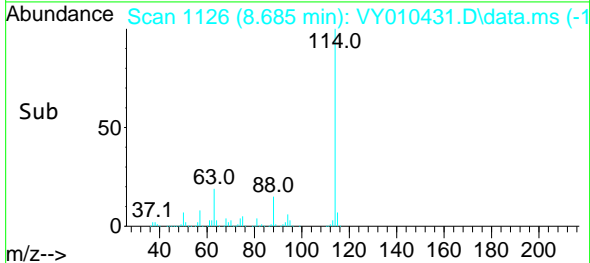
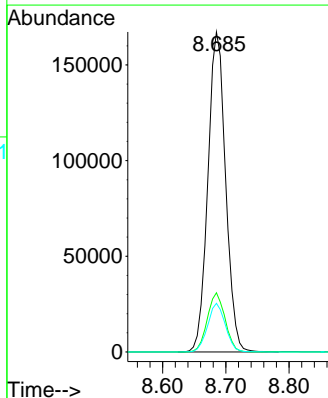
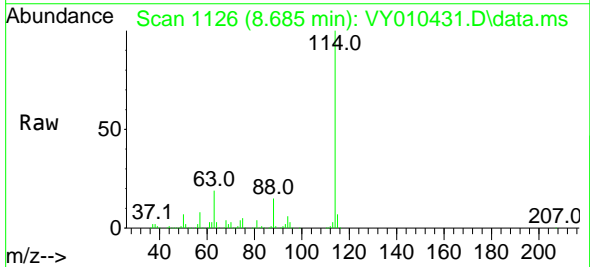


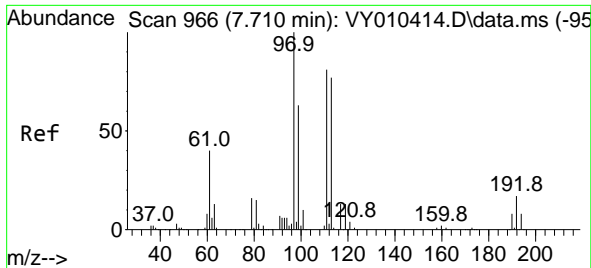
Tgt Ion: 65 Resp: 110691
 Ion Ratio Lower Upper
 65 100
 67 52.6 0.0 99.4



#34
 1,4-Difluorobenzene
 Concen: 50.000 ug/l
 RT: 8.685 min Scan# 1126
 Delta R.T. 0.000 min
 Lab File: VY010431.D
 Acq: 09 Sep 2022 20:29

Tgt Ion: 114 Resp: 326702
 Ion Ratio Lower Upper
 114 100
 63 18.5 0.0 43.2
 88 15.2 0.0 31.8

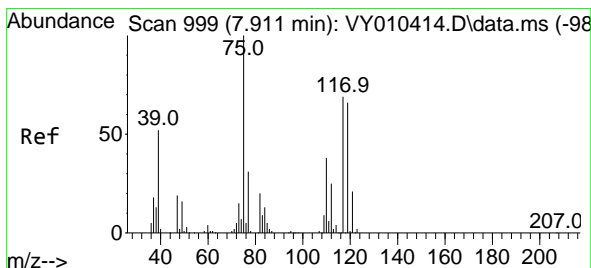
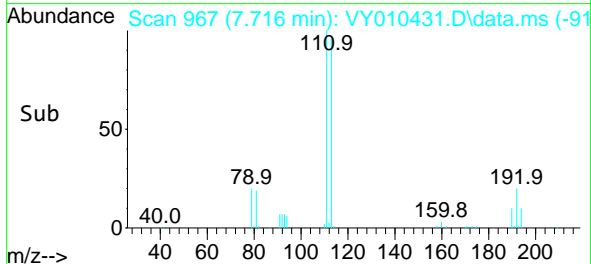
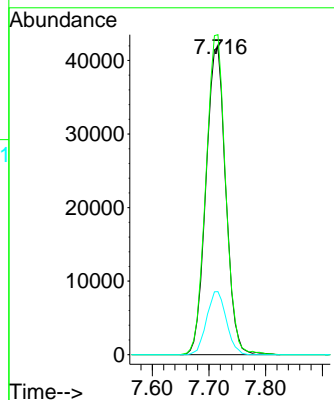
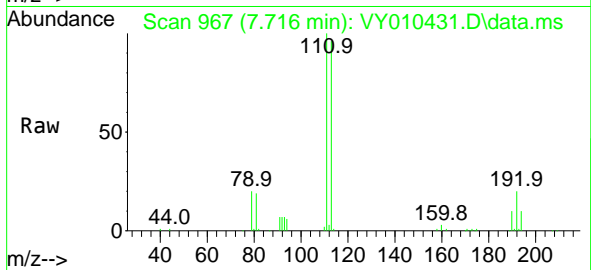




#35
 Dibromofluoromethane
 Concen: 43.789 ug/l
 RT: 7.716 min Scan# 90
 Delta R.T. 0.006 min
 Lab File: VY010431.D
 Acq: 09 Sep 2022 20:29

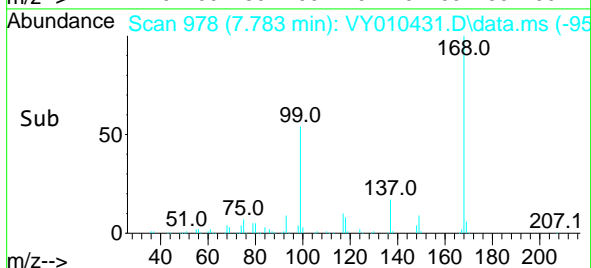
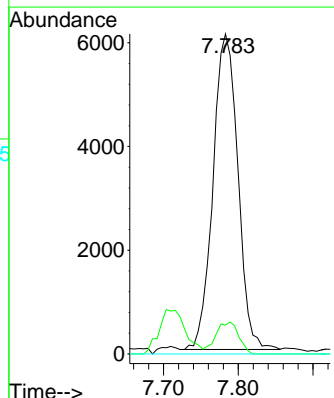
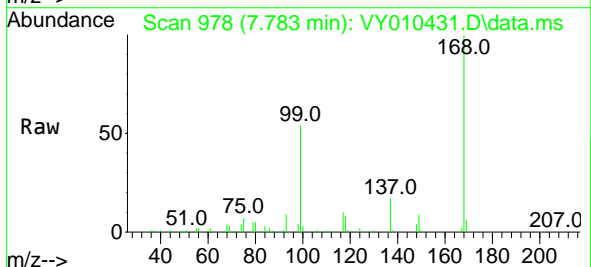
Instrument : MSVOA_Y
 ClientSampleId : SB-20-7.5-8.0

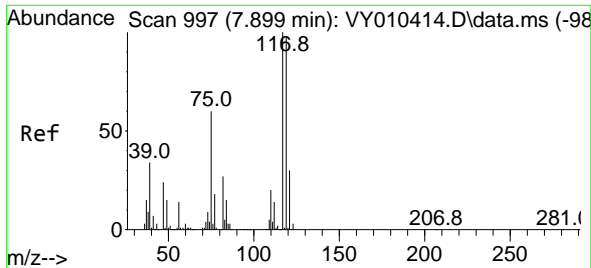
Tgt Ion:113 Resp: 101603
 Ion Ratio Lower Upper
 113 100
 111 103.4 82.6 124.0
 192 20.4 17.6 26.4



#36
 1,1-Dichloropropene
 Concen: 4.421 ug/l
 RT: 7.783 min Scan# 978
 Delta R.T. -0.128 min
 Lab File: VY010431.D
 Acq: 09 Sep 2022 20:29

Tgt Ion: 75 Resp: 14044
 Ion Ratio Lower Upper
 75 100
 110 9.3 17.1 51.2#
 77 0.0 24.4 36.6#

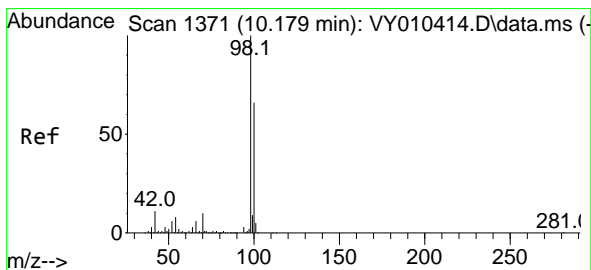
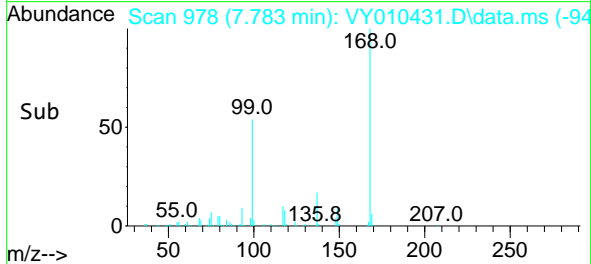
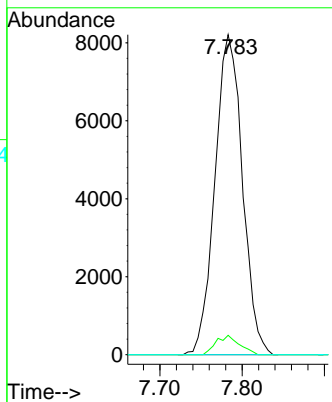
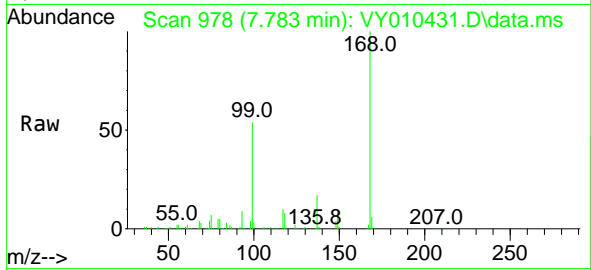




#38
 Carbon Tetrachloride
 Concen: 5.399 ug/l
 RT: 7.783 min Scan# 91
 Delta R.T. -0.116 min
 Lab File: VY010431.D
 Acq: 09 Sep 2022 20:29

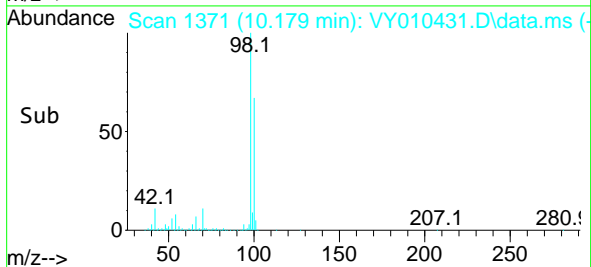
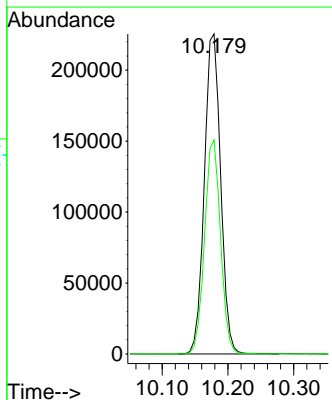
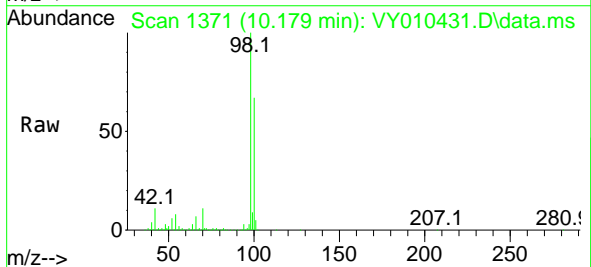
Instrument : MSVOA_Y
 ClientSampleId : SB-20-7.5-8.0

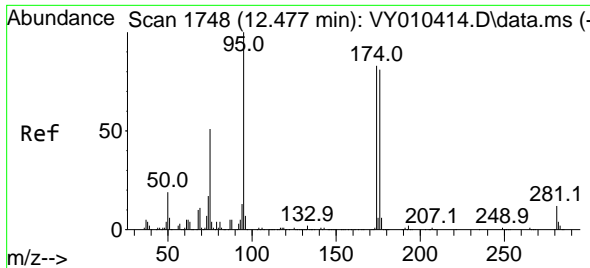
Tgt Ion	Resp	Lower	Upper
117	19079		
117	100		
119	6.1	77.9	116.9#
121	0.0	24.8	37.2#



#50
 Toluene-d8
 Concen: 51.705 ug/l
 RT: 10.179 min Scan# 1371
 Delta R.T. -0.000 min
 Lab File: VY010431.D
 Acq: 09 Sep 2022 20:29

Tgt Ion	Resp	Lower	Upper
98	388814		
98	100		
100	65.5	50.2	75.2



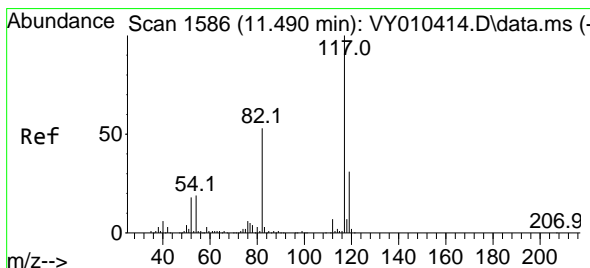
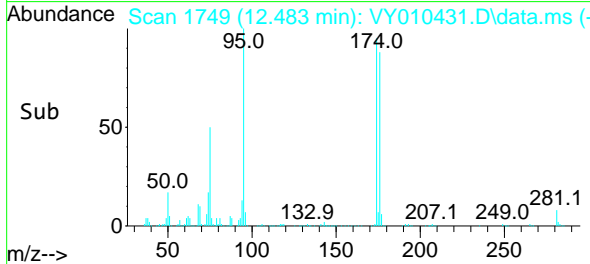
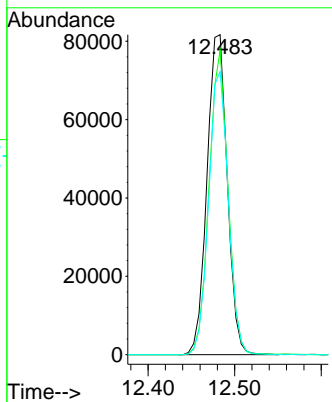
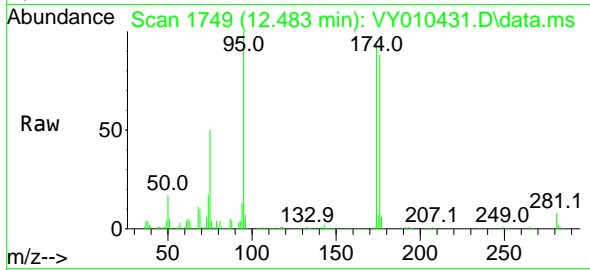


#62
 4-Bromofluorobenzene
 Concen: 43.738 ug/l
 RT: 12.483 min Scan# 1
 Delta R.T. 0.006 min
 Lab File: VY010431.D
 Acq: 09 Sep 2022 20:29

Instrument :
 MSVOA_Y
 ClientSampleId :
 SB-20-7.5-8.0

Tgt Ion: 95 Resp: 132668

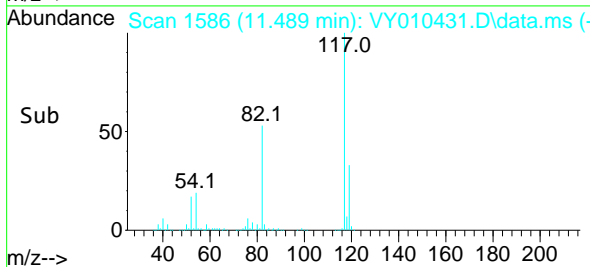
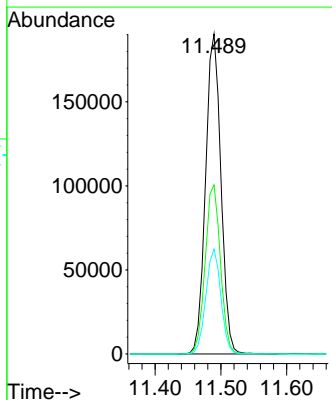
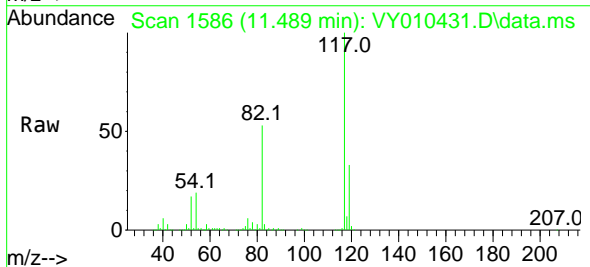
Ion	Ratio	Lower	Upper
95	100		
174	89.2	0.0	177.0
176	85.8	0.0	175.8

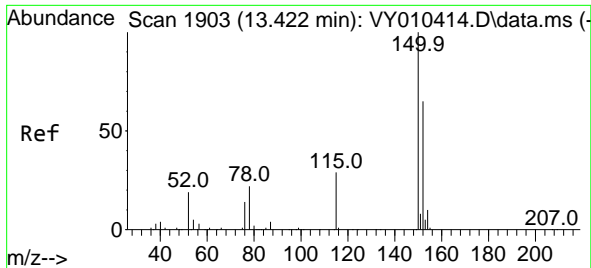


#63
 Chlorobenzene-d5
 Concen: 50.000 ug/l
 RT: 11.489 min Scan# 1586
 Delta R.T. -0.001 min
 Lab File: VY010431.D
 Acq: 09 Sep 2022 20:29

Tgt Ion: 117 Resp: 309431

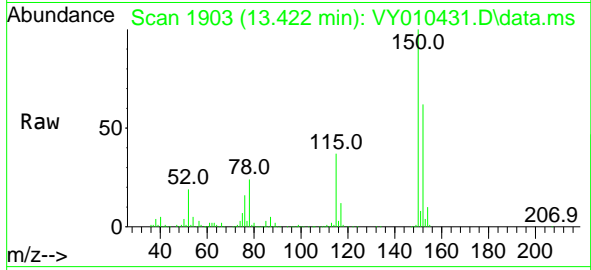
Ion	Ratio	Lower	Upper
117	100		
82	52.8	43.0	64.4
119	32.8	25.4	38.0



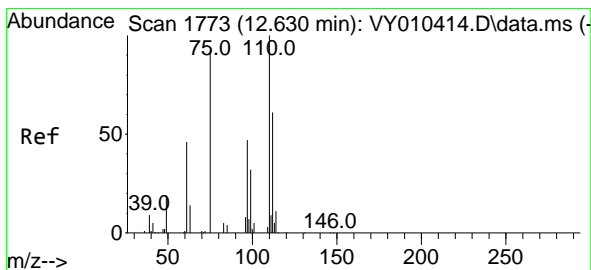
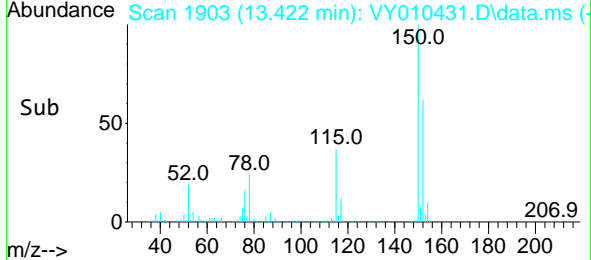
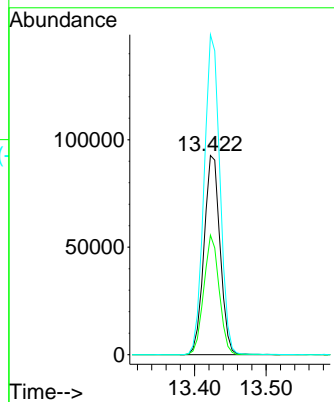


#72
 1,4-Dichlorobenzene-d4
 Concen: 50.000 ug/l
 RT: 13.422 min Scan# 1903
 Delta R.T. 0.000 min
 Lab File: VY010431.D
 Acq: 09 Sep 2022 20:29

Instrument : MSVOA_Y
 ClientSampleId : SB-20-7.5-8.0

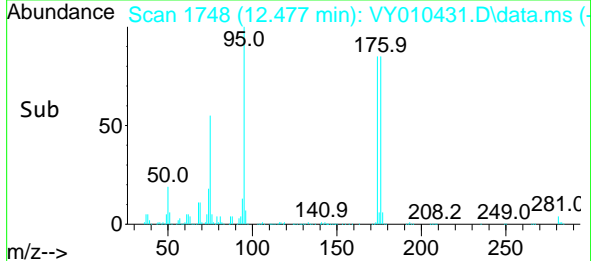
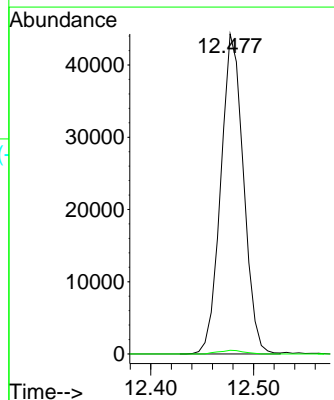
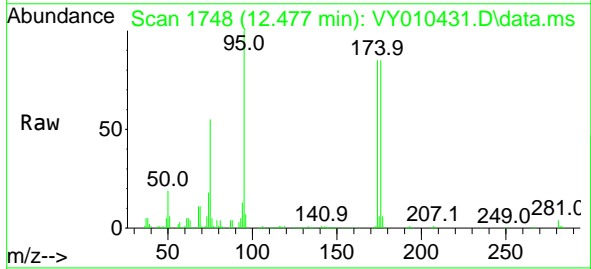


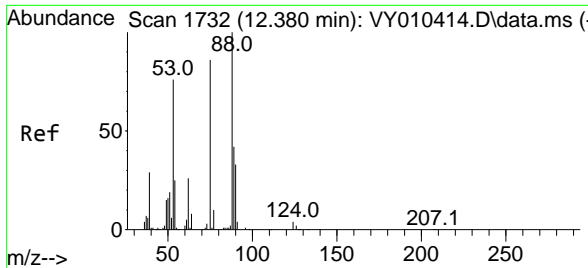
Tgt Ion:152 Resp: 144431
 Ion Ratio Lower Upper
 152 100
 115 57.4 28.2 84.7
 150 158.7 0.0 347.6



#76
 1,2,3-Trichloropropane
 Concen: 42.646 ug/l
 RT: 12.477 min Scan# 1748
 Delta R.T. -0.153 min
 Lab File: VY010431.D
 Acq: 09 Sep 2022 20:29

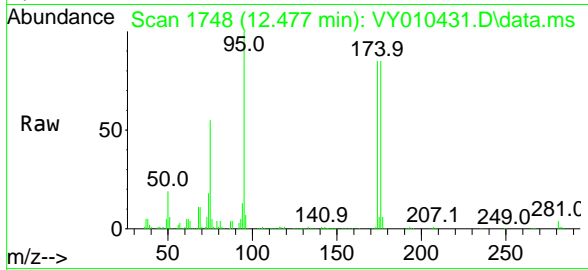
Tgt Ion: 75 Resp: 67979
 Ion Ratio Lower Upper
 75 100
 77 1.3 0.0 0.0#





#81
 trans-1,4-Dichloro-2-butene
 Concen: 94.689 ug/l
 RT: 12.477 min Scan# 1
 Delta R.T. 0.097 min
 Lab File: VY010431.D
 Acq: 09 Sep 2022 20:29

Instrument :
 MSVOA_Y
 ClientSampleId :
 SB-20-7.5-8.0



Tgt Ion: 75 Resp: 67979
 Ion Ratio Lower Upper
 75 100
 53 0.0 85.3 127.9#
 89 0.0 37.0 55.4#

