

Data Path : Z:\voasrv\HPCHEM1\MSVOA_Y\Data\VY091125\
 Data File : VY023344.D
 Acq On : 11 Sep 2025 12:57
 Operator : SY/MD
 Sample : Q3075-10
 Misc : 5.02g/5.0mL/MSVOA_Y/SOIL/A
 ALS Vial : 10 Sample Multiplier: 1

Instrument :
 MSVOA_Y
 ClientSampleId :
 MOO-25-02563

Quant Time: Sep 12 01:26:30 2025
 Quant Method : Z:\voasrv\HPCHEM1\MSVOA_Y\methods\82Y090825S.M
 Quant Title : SW846 8260
 QLast Update : Wed Sep 10 01:44:33 2025
 Response via : Initial Calibration

Compound	R.T.	QIon	Response	Conc	Units	Dev(Min)

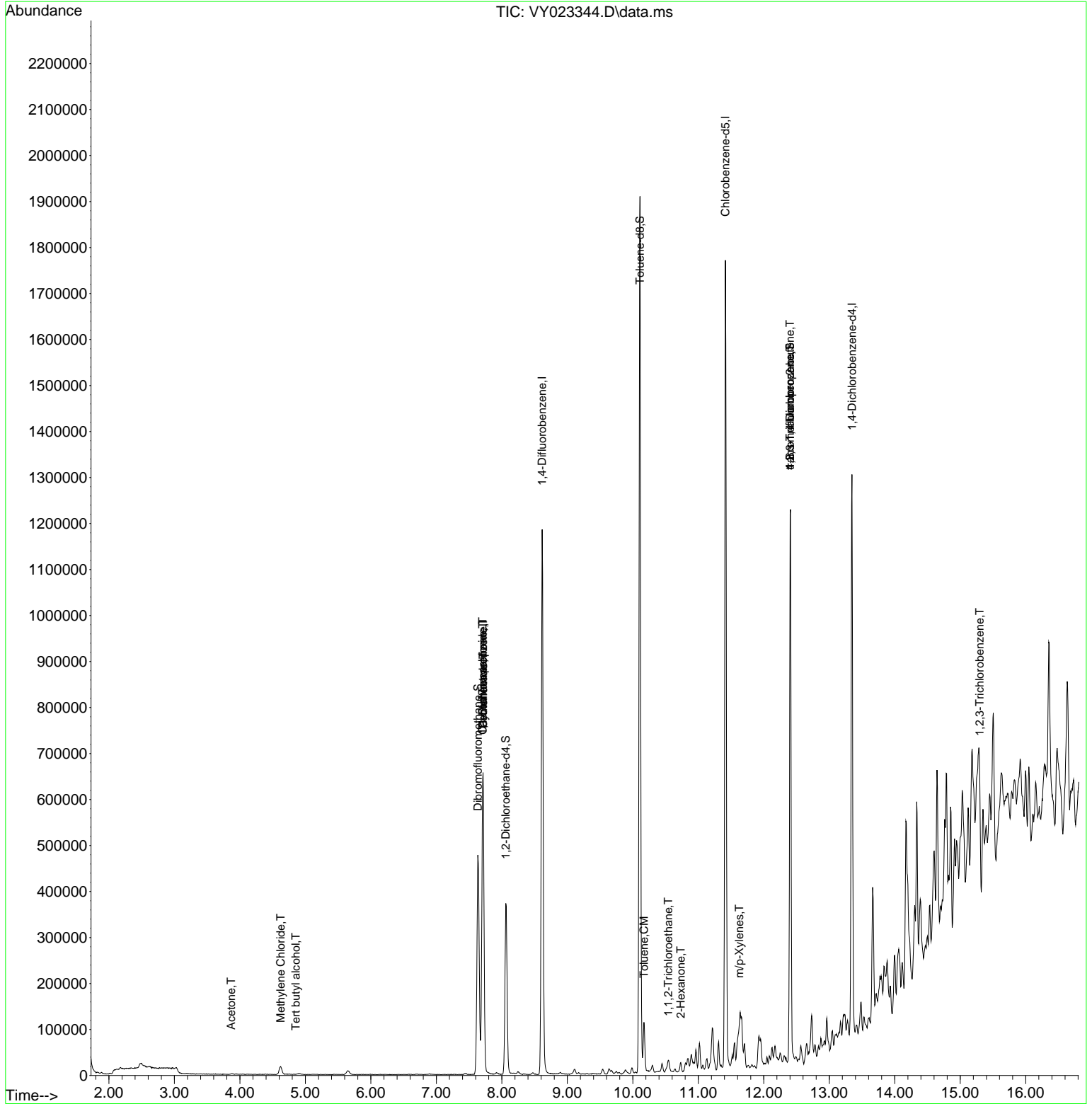
Internal Standards						
1) Pentafluorobenzene	7.713	168	535990	50.000	ug/l	0.00
34) 1,4-Difluorobenzene	8.616	114	1031059	50.000	ug/l	0.00
63) Chlorobenzene-d5	11.414	117	965924	50.000	ug/l	0.00
72) 1,4-Dichlorobenzene-d4	13.346	152	334115	50.000	ug/l	0.00
System Monitoring Compounds						
33) 1,2-Dichloroethane-d4	8.061	65	291492	61.890	ug/l	0.00
Spiked Amount	50.000	Range	50 - 163	Recovery	=	123.780%
35) Dibromofluoromethane	7.634	113	342545	54.351	ug/l	0.00
Spiked Amount	50.000	Range	54 - 147	Recovery	=	108.700%
50) Toluene-d8	10.109	98	1235217	51.903	ug/l	0.00
Spiked Amount	50.000	Range	58 - 134	Recovery	=	103.800%
62) 4-Bromofluorobenzene	12.401	95	361820	48.311	ug/l	0.00
Spiked Amount	50.000	Range	30 - 143	Recovery	=	96.620%
Target Compounds						
					Qvalue	
11) Tert butyl alcohol	4.854	59	649	2.385	ug/l #	89
16) Acetone	3.866	43	2111	1.968	ug/l	96
20) Methylene Chloride	4.622	84	13873	2.417	ug/l	89
31) Cyclohexane	7.713	56	10760	1.306	ug/l #	1
36) 1,1-Dichloropropene	7.707	75	37392	4.166	ug/l #	50
38) Carbon Tetrachloride	7.707	117	50535	4.893	ug/l #	17
52) Toluene	10.170	92	44788	2.529	ug/l	99
55) 1,1,2-Trichloroethane	10.542	97	8128	1.592	ug/l #	21
59) 2-Hexanone	10.731	43	7620	3.102	ug/l #	24
68) m/p-Xylenes	11.627	106	17664	1.276	ug/l	97
76) 1,2,3-Trichloropropane	12.401	75	183442	54.216	ug/l #	100
81) trans-1,4-Dichloro-2-b...	12.401	75	183442	147.852	ug/l #	14
96) 1,2,3-Trichlorobenzene	15.297	180	11254	2.239	ug/l #	1

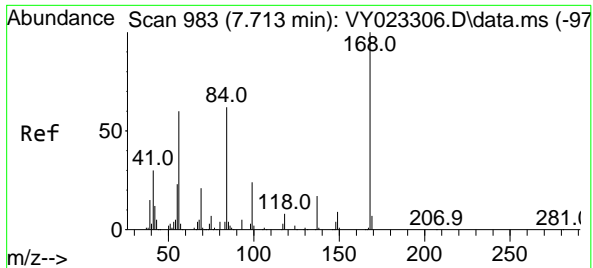
(#) = qualifier out of range (m) = manual integration (+) = signals summed

Data Path : Z:\voasrv\HPCHEM1\MSVOA_Y\Data\VY091125\
 Data File : VY023344.D
 Acq On : 11 Sep 2025 12:57
 Operator : SY/MD
 Sample : Q3075-10
 Misc : 5.02g/5.0mL/MSVOA_Y/SOIL/A
 ALS Vial : 10 Sample Multiplier: 1

Instrument :
 MSVOA_Y
ClientSampleId :
 MOO-25-02563

Quant Time: Sep 12 01:26:30 2025
 Quant Method : Z:\voasrv\HPCHEM1\MSVOA_Y\methods\82Y090825S.M
 Quant Title : SW846 8260
 QLast Update : Wed Sep 10 01:44:33 2025
 Response via : Initial Calibration

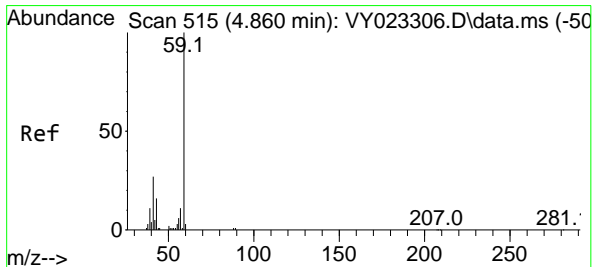
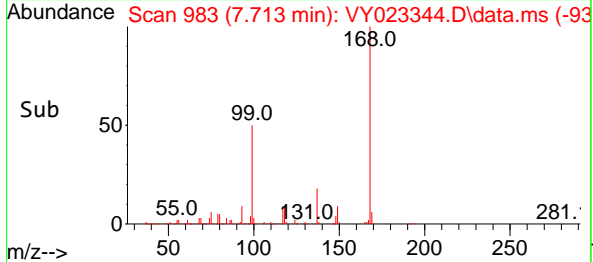
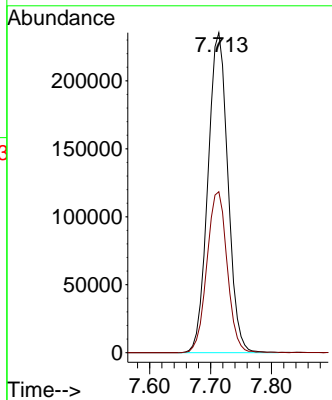
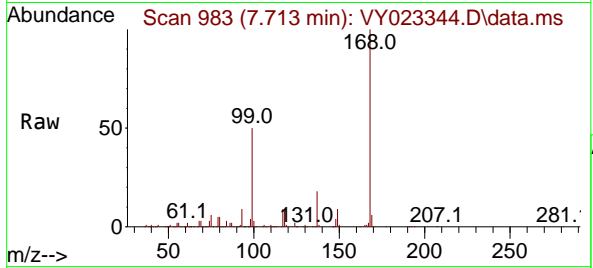




#1
 Pentafluorobenzene
 Concen: 50.000 ug/l
 RT: 7.713 min Scan# 91
 Delta R.T. 0.006 min
 Lab File: VY023344.D
 Acq: 11 Sep 2025 12:57

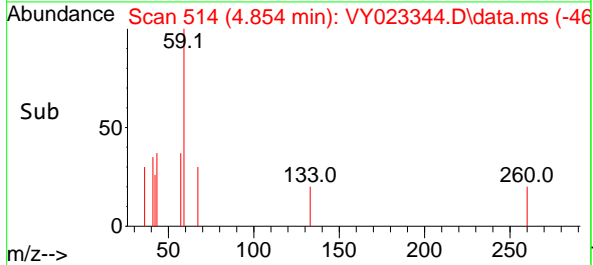
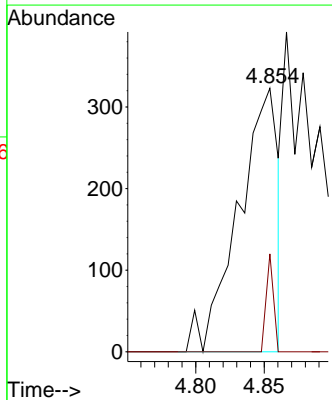
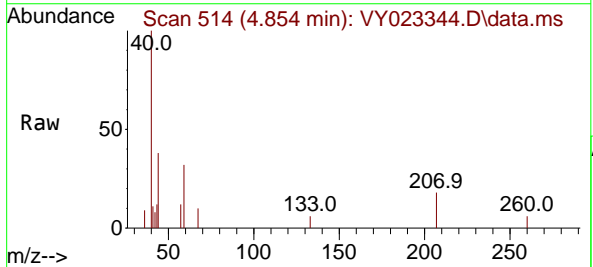
Instrument : MSVOA_Y
 ClientSampleId : MOO-25-02563

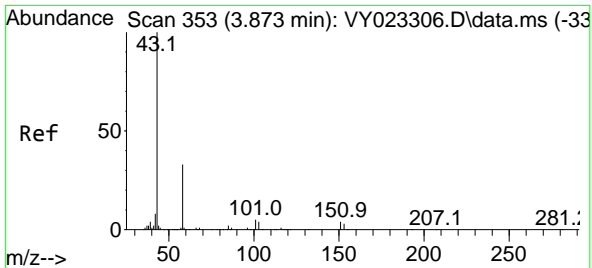
Tgt Ion:168 Resp: 535990
 Ion Ratio Lower Upper
 168 100
 99 50.3 42.8 64.2



#11
 Tert butyl alcohol
 Concen: 2.385 ug/l
 RT: 4.854 min Scan# 514
 Delta R.T. -0.006 min
 Lab File: VY023344.D
 Acq: 11 Sep 2025 12:57

Tgt Ion: 59 Resp: 649
 Ion Ratio Lower Upper
 59 100
 57 6.8 8.6 13.0#

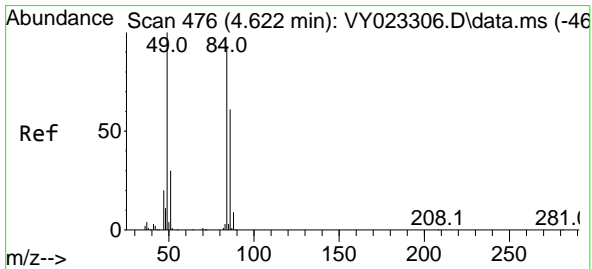
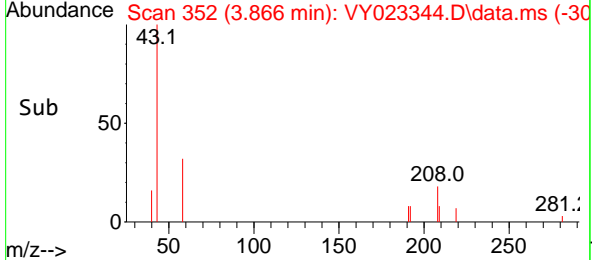
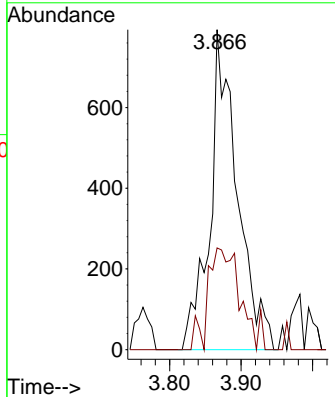
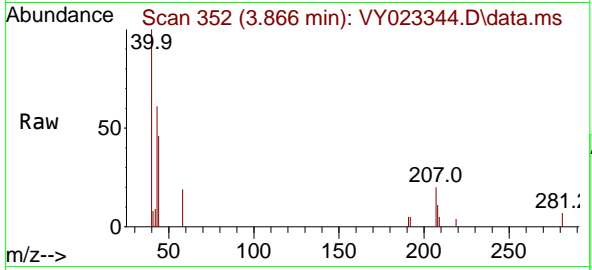




#16
 Acetone
 Concen: 1.968 ug/l
 RT: 3.866 min Scan# 31
 Delta R.T. 0.006 min
 Lab File: VY023344.D
 Acq: 11 Sep 2025 12:57

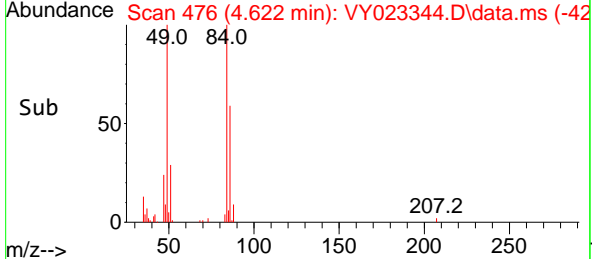
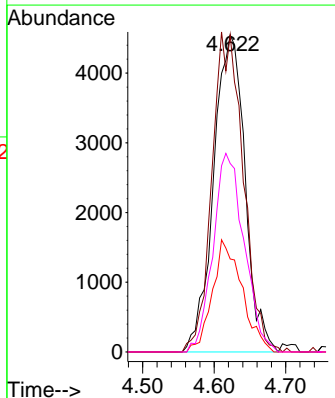
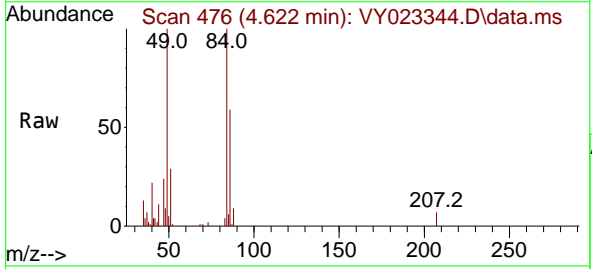
Instrument : MSVOA_Y
 ClientSampleId : MOO-25-02563

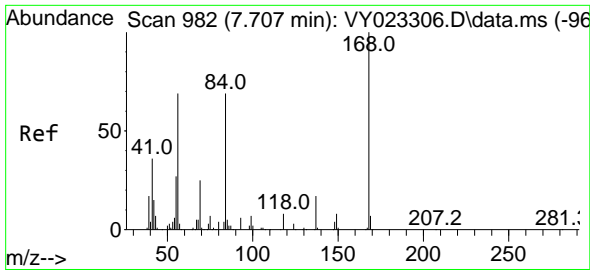
Tgt Ion: 43 Resp: 2111
 Ion Ratio Lower Upper
 43 100
 58 31.8 27.1 40.7



#20
 Methylene Chloride
 Concen: 2.417 ug/l
 RT: 4.622 min Scan# 476
 Delta R.T. 0.018 min
 Lab File: VY023344.D
 Acq: 11 Sep 2025 12:57

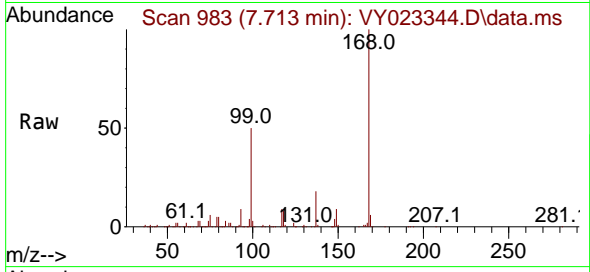
Tgt Ion: 84 Resp: 13873
 Ion Ratio Lower Upper
 84 100
 49 99.9 93.0 139.6
 51 29.3 29.0 43.4
 86 59.5 50.2 75.4



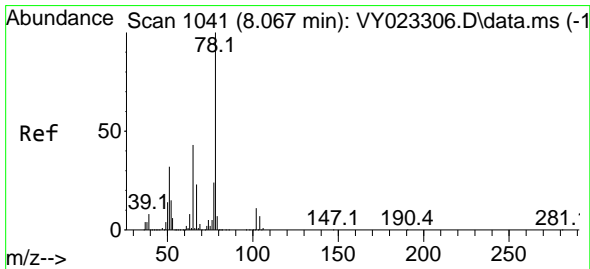
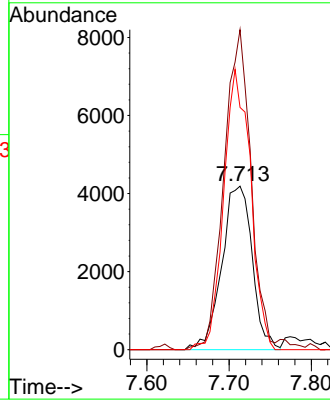
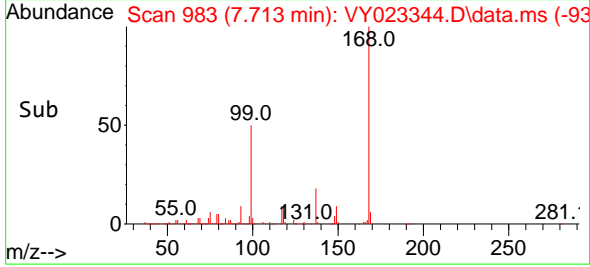


#31
 Cyclohexane
 Concen: 1.306 ug/l
 RT: 7.713 min Scan# 983
 Delta R.T. 0.018 min
 Lab File: VY023344.D
 Acq: 11 Sep 2025 12:57

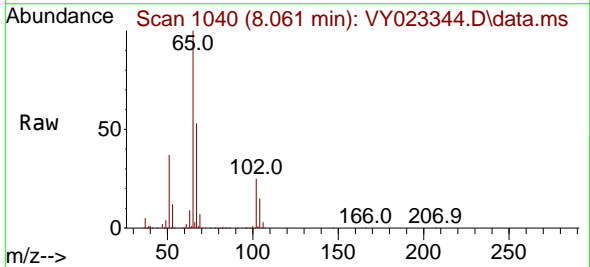
Instrument : MSVOA_Y
 ClientSampleId : MOO-25-02563



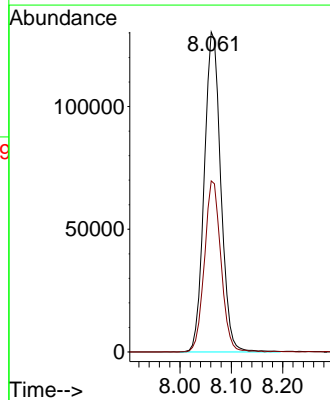
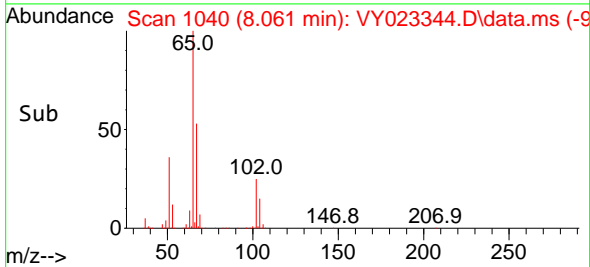
Tgt Ion: 56 Resp: 10760
 Ion Ratio Lower Upper
 56 100
 69 195.7 28.2 42.2#
 84 148.1 76.6 114.8#

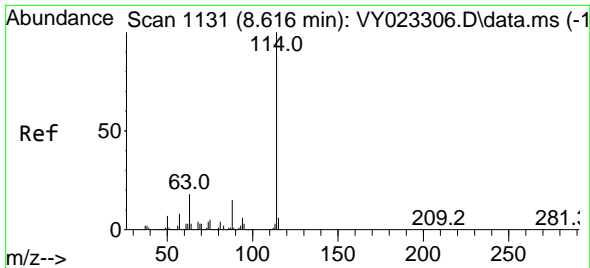


#33
 1,2-Dichloroethane-d4
 Concen: 61.890 ug/l
 RT: 8.061 min Scan# 1040
 Delta R.T. 0.006 min
 Lab File: VY023344.D
 Acq: 11 Sep 2025 12:57



Tgt Ion: 65 Resp: 291492
 Ion Ratio Lower Upper
 65 100
 67 53.4 0.0 106.8



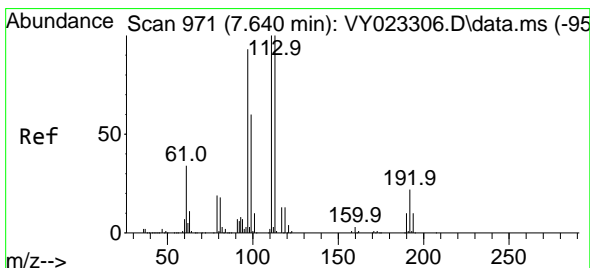
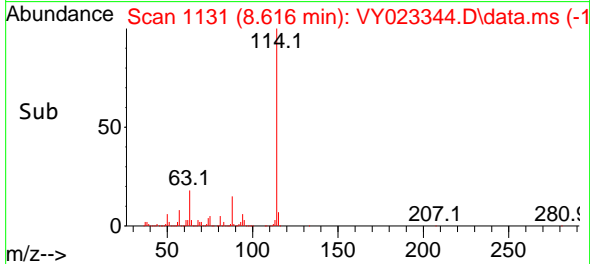
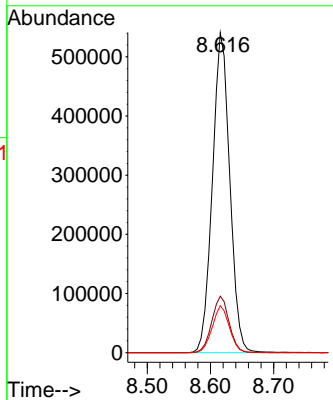
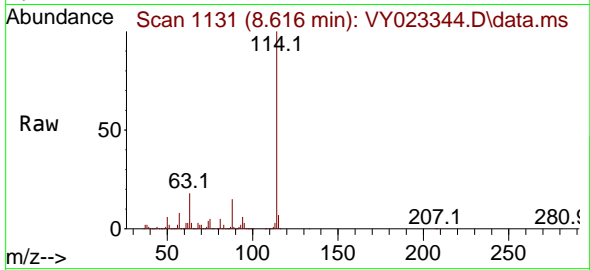


#34
 1,4-Difluorobenzene
 Concen: 50.000 ug/l
 RT: 8.616 min Scan# 1131
 Delta R.T. 0.006 min
 Lab File: VY023344.D
 Acq: 11 Sep 2025 12:57

Instrument : MSVOA_Y
 ClientSampleId : MOO-25-02563

Tgt Ion:114 Resp: 1031059

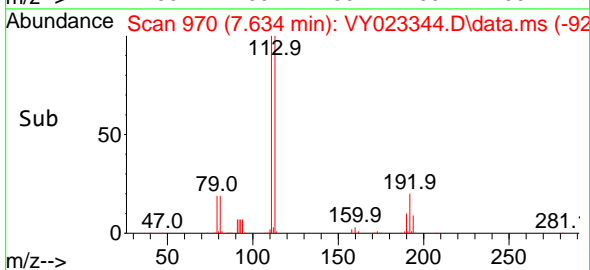
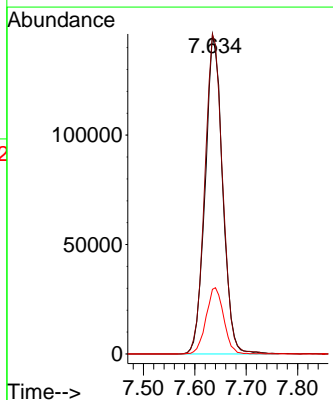
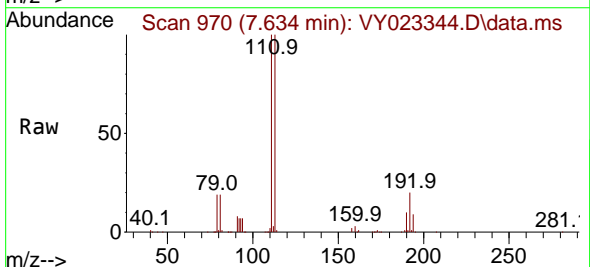
Ion	Ratio	Lower	Upper
114	100		
63	17.7	0.0	38.4
88	14.6	0.0	30.0

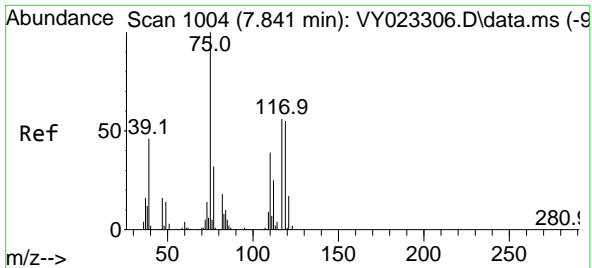


#35
 Dibromofluoromethane
 Concen: 54.351 ug/l
 RT: 7.634 min Scan# 970
 Delta R.T. 0.006 min
 Lab File: VY023344.D
 Acq: 11 Sep 2025 12:57

Tgt Ion:113 Resp: 342545

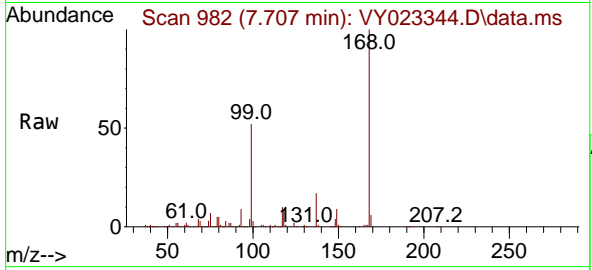
Ion	Ratio	Lower	Upper
113	100		
111	102.5	81.1	121.7
192	21.1	16.2	24.4





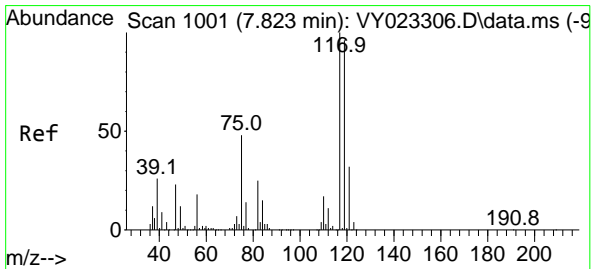
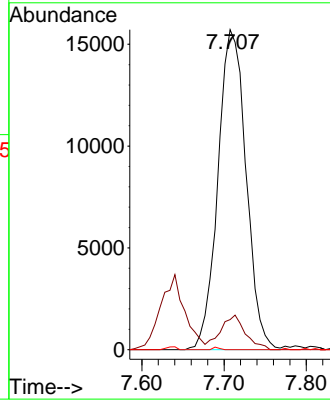
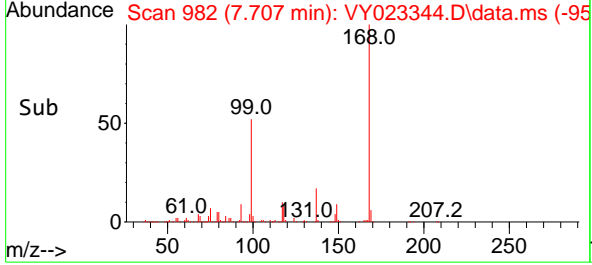
#36
 1,1-Dichloropropene
 Concen: 4.166 ug/l
 RT: 7.707 min Scan# 982
 Delta R.T. -0.122 min
 Lab File: VY023344.D
 Acq: 11 Sep 2025 12:57

Instrument : MSVOA_Y
 ClientSampleId : MOO-25-02563

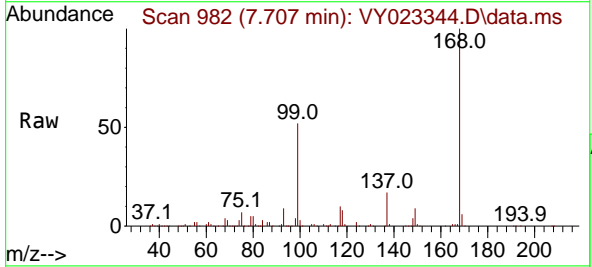


Tgt Ion: 75 Resp: 37392

Ion	Ratio	Lower	Upper
75	100		
110	9.6	18.1	54.4#
77	0.0	24.6	37.0#

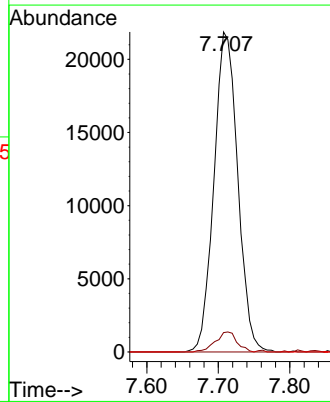
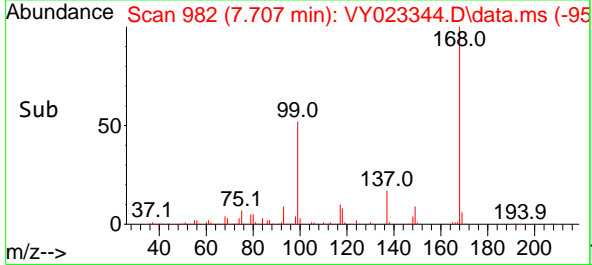


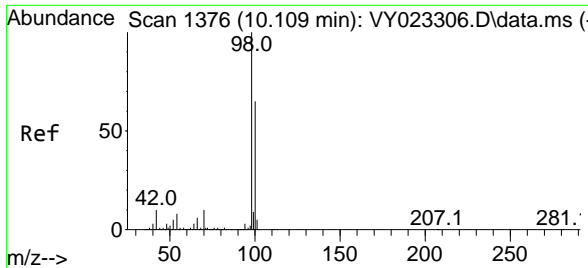
#38
 Carbon Tetrachloride
 Concen: 4.893 ug/l
 RT: 7.707 min Scan# 982
 Delta R.T. -0.110 min
 Lab File: VY023344.D
 Acq: 11 Sep 2025 12:57



Tgt Ion: 117 Resp: 50535

Ion	Ratio	Lower	Upper
117	100		
119	6.1	75.6	113.4#
121	0.0	25.8	38.8#

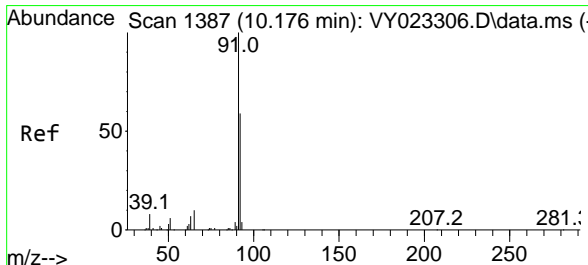
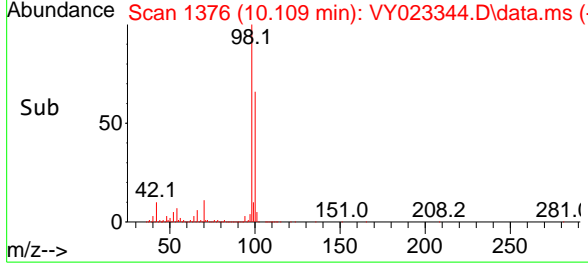
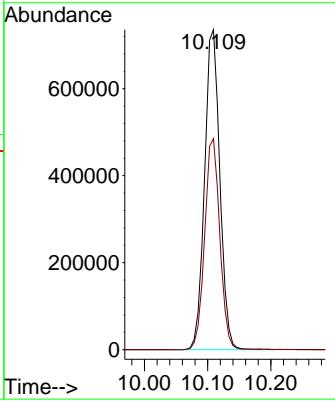
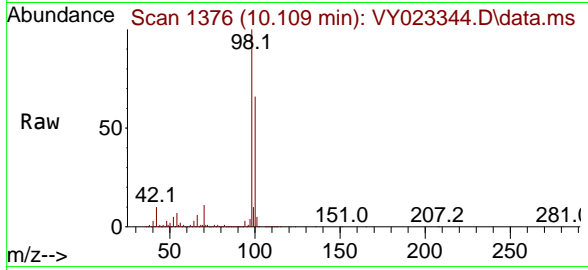




#50
 Toluene-d8
 Concen: 51.903 ug/l
 RT: 10.109 min Scan# 1376
 Delta R.T. 0.006 min
 Lab File: VY023344.D
 Acq: 11 Sep 2025 12:57

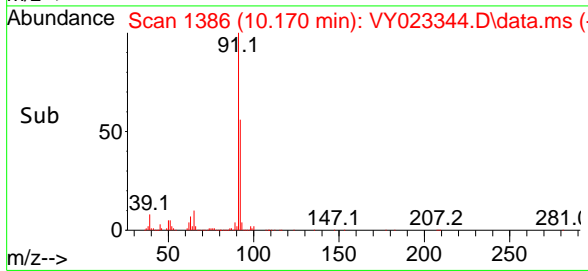
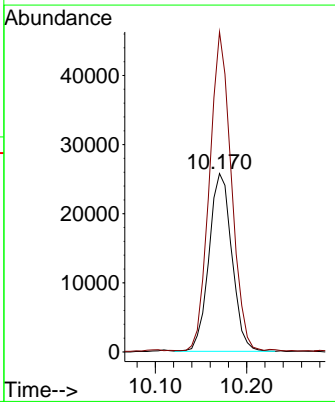
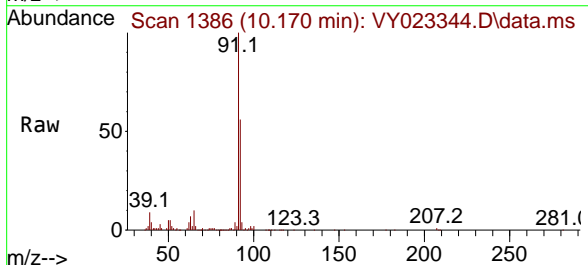
Instrument : MSVOA_Y
 ClientSampleId : MOO-25-02563

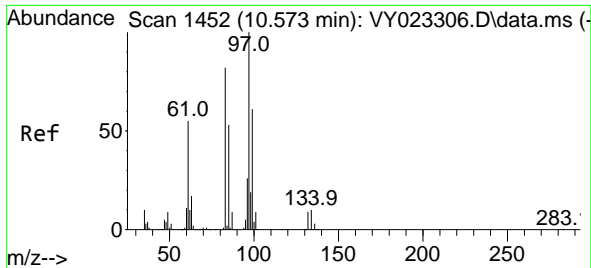
Tgt Ion: 98 Resp: 1235217
 Ion Ratio Lower Upper
 98 100
 100 65.5 52.3 78.5



#52
 Toluene
 Concen: 2.529 ug/l
 RT: 10.170 min Scan# 1386
 Delta R.T. 0.006 min
 Lab File: VY023344.D
 Acq: 11 Sep 2025 12:57

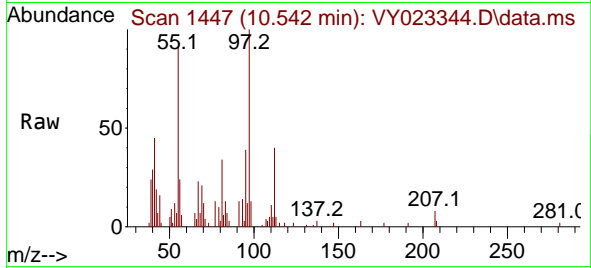
Tgt Ion: 92 Resp: 44788
 Ion Ratio Lower Upper
 92 100
 91 171.4 136.4 204.6





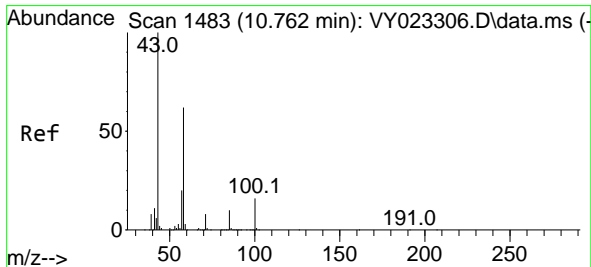
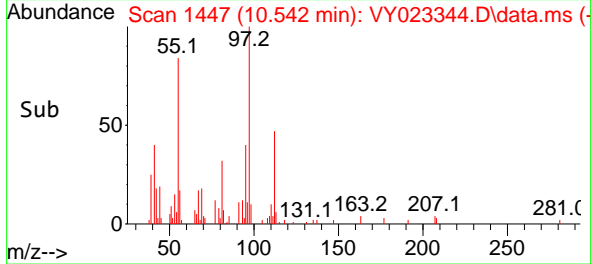
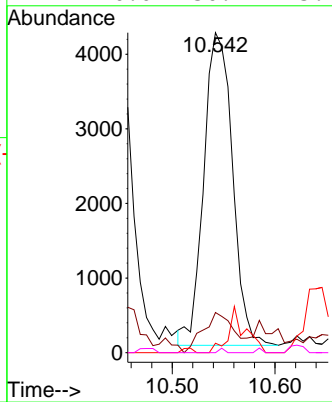
#55
 1,1,2-Trichloroethane
 Concen: 1.592 ug/l
 RT: 10.542 min Scan# 1447
 Delta R.T. -0.024 min
 Lab File: VY023344.D
 Acq: 11 Sep 2025 12:57

Instrument : MSVOA_Y
 ClientSampleId : MOO-25-02563



Tgt Ion: 97 Resp: 8128

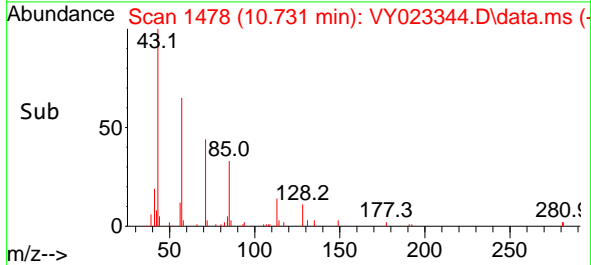
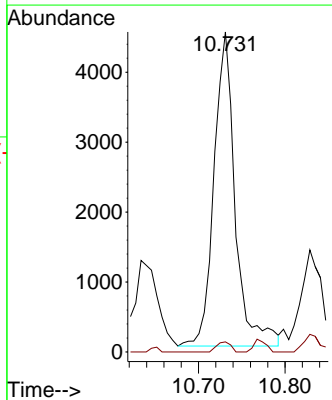
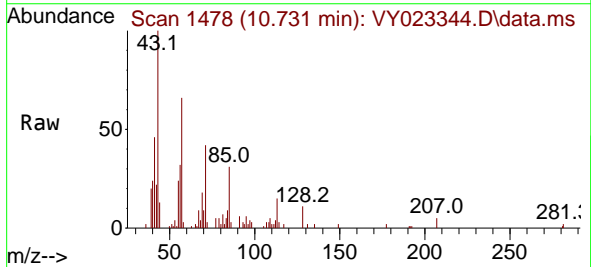
Ion	Ratio	Lower	Upper
97	100		
83	10.5	67.7	101.5#
85	3.0	44.5	66.7#
99	0.0	50.2	75.2#

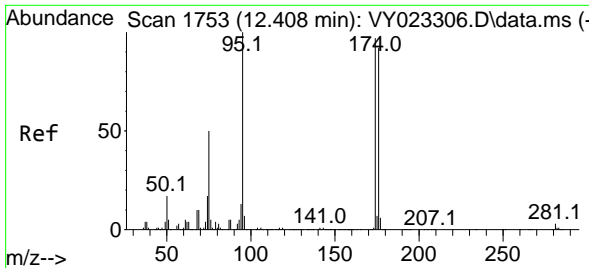


#59
 2-Hexanone
 Concen: 3.102 ug/l
 RT: 10.731 min Scan# 1478
 Delta R.T. -0.024 min
 Lab File: VY023344.D
 Acq: 11 Sep 2025 12:57

Tgt Ion: 43 Resp: 7620

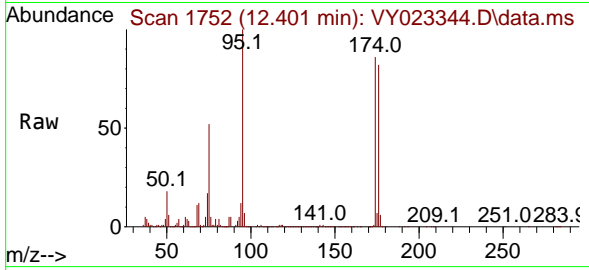
Ion	Ratio	Lower	Upper
43	100		
58	2.1	29.5	88.5#



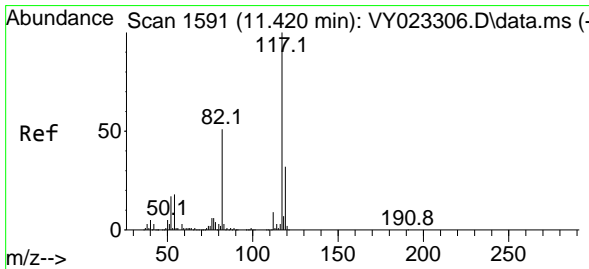
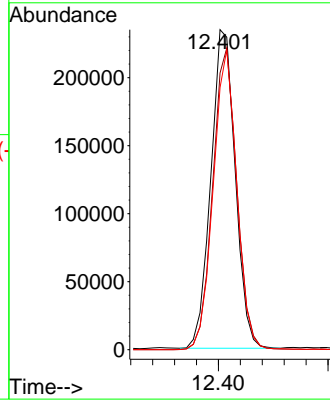
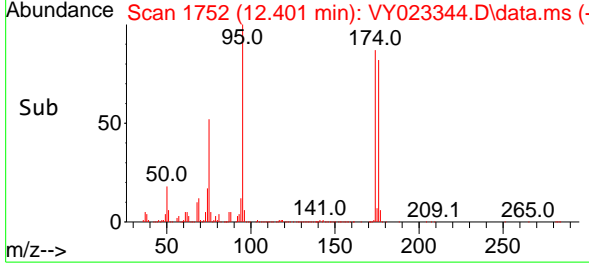


#62
 4-Bromofluorobenzene
 Concen: 48.311 ug/l
 RT: 12.401 min Scan# 11
 Delta R.T. 0.000 min
 Lab File: VY023344.D
 Acq: 11 Sep 2025 12:57

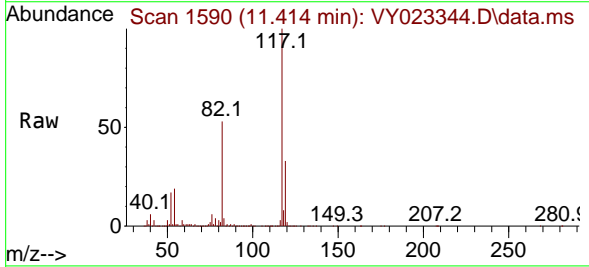
Instrument :
 MSVOA_Y
 ClientSampleId :
 MOO-25-02563



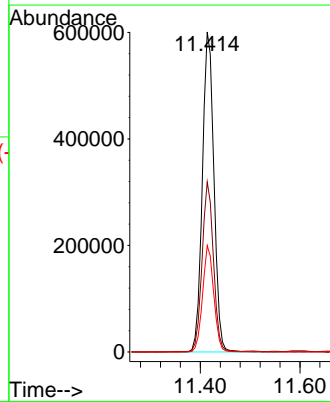
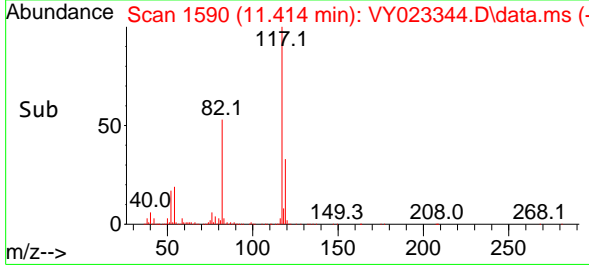
Tgt Ion: 95 Resp: 361820
 Ion Ratio Lower Upper
 95 100
 174 93.4 0.0 171.6
 176 91.2 0.0 167.6

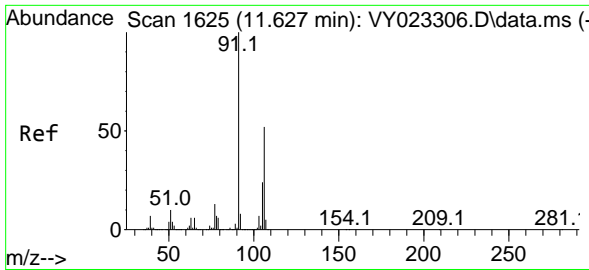


#63
 Chlorobenzene-d5
 Concen: 50.000 ug/l
 RT: 11.414 min Scan# 1590
 Delta R.T. 0.006 min
 Lab File: VY023344.D
 Acq: 11 Sep 2025 12:57



Tgt Ion: 117 Resp: 965924
 Ion Ratio Lower Upper
 117 100
 82 53.0 43.4 65.0
 119 33.2 25.6 38.4

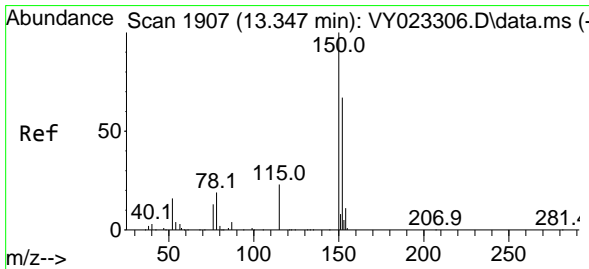
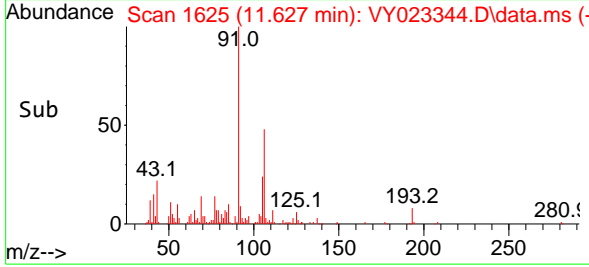
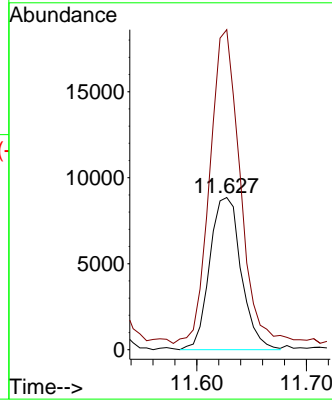
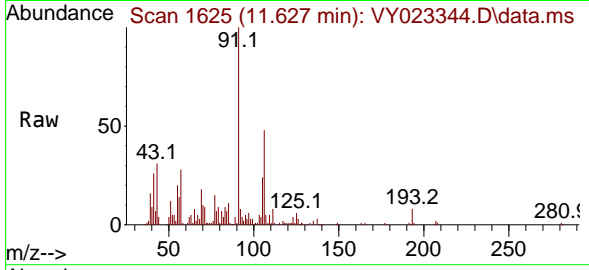




#68
 m/p-Xylenes
 Concen: 1.276 ug/l
 RT: 11.627 min Scan# 10
 Delta R.T. 0.006 min
 Lab File: VY023344.D
 Acq: 11 Sep 2025 12:57

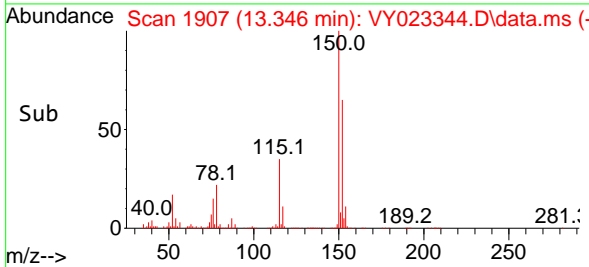
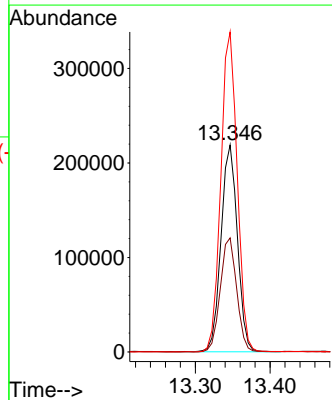
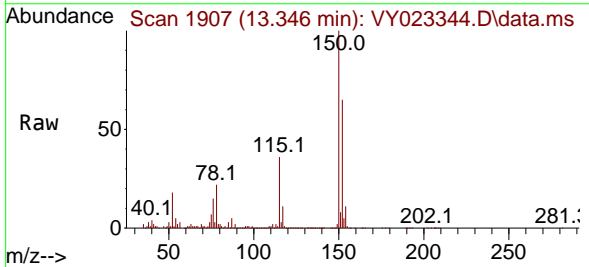
Instrument :
 MSVOA_Y
 ClientSampleId :
 MOO-25-02563

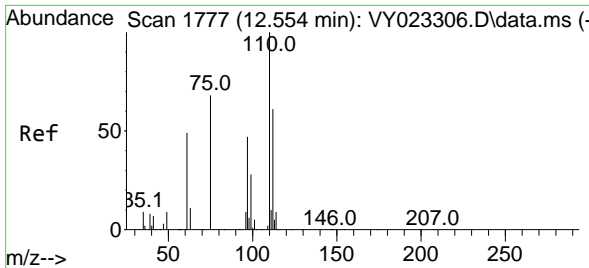
Tgt Ion:106 Resp: 17664
 Ion Ratio Lower Upper
 106 100
 91 203.6 158.6 238.0



#72
 1,4-Dichlorobenzene-d4
 Concen: 50.000 ug/l
 RT: 13.346 min Scan# 1907
 Delta R.T. 0.006 min
 Lab File: VY023344.D
 Acq: 11 Sep 2025 12:57

Tgt Ion:152 Resp: 334115
 Ion Ratio Lower Upper
 152 100
 115 55.0 28.2 84.6
 150 154.2 0.0 348.0

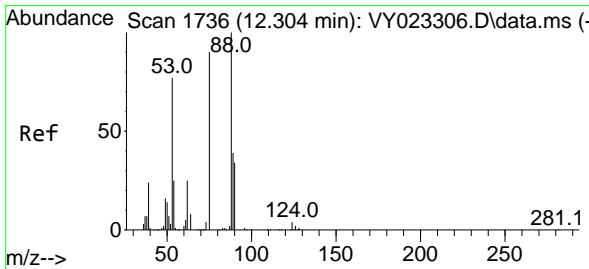
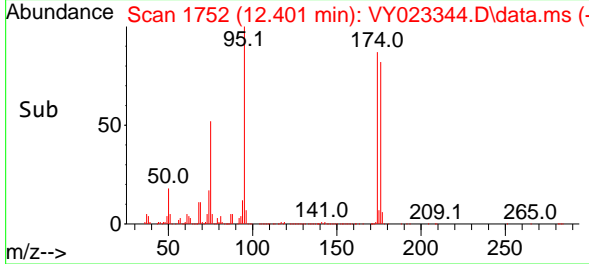
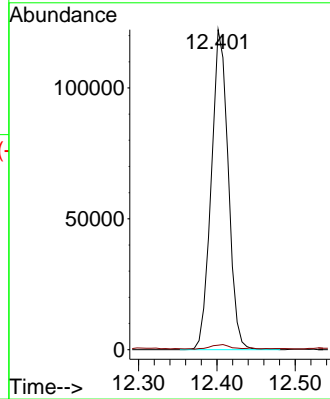
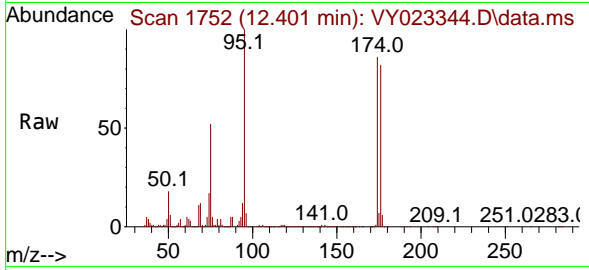




#76
 1,2,3-Trichloropropane
 Concen: 54.216 ug/l
 RT: 12.401 min Scan# 1752
 Delta R.T. -0.146 min
 Lab File: VY023344.D
 Acq: 11 Sep 2025 12:57

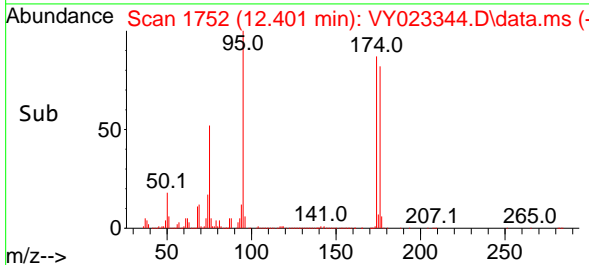
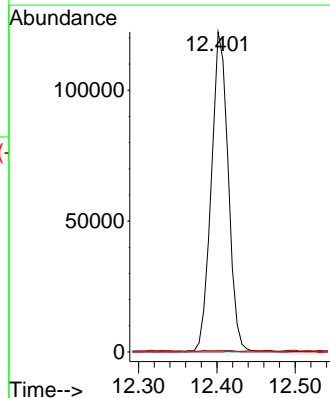
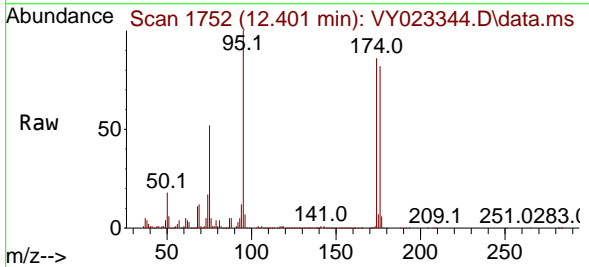
Instrument : MSVOA_Y
 ClientSampleId : MOO-25-02563

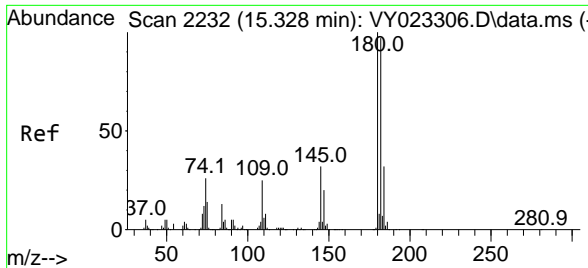
Tgt Ion: 75 Resp: 183442
 Ion Ratio Lower Upper
 75 100
 77 1.7 0.0 0.0#



#81
 trans-1,4-Dichloro-2-butene
 Concen: 147.852 ug/l
 RT: 12.401 min Scan# 1752
 Delta R.T. 0.104 min
 Lab File: VY023344.D
 Acq: 11 Sep 2025 12:57

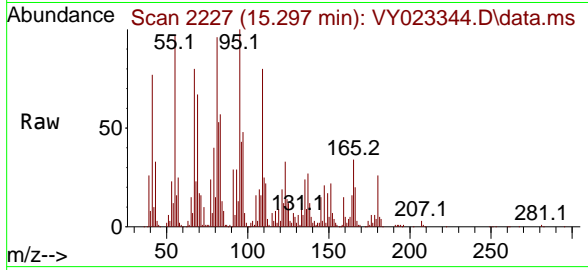
Tgt Ion: 75 Resp: 183442
 Ion Ratio Lower Upper
 75 100
 53 0.2 70.8 106.2#
 89 0.1 38.1 57.1#





#96
 1,2,3-Trichlorobenzene
 Concen: 2.239 ug/l
 RT: 15.297 min Scan# 21
 Delta R.T. -0.024 min
 Lab File: VY023344.D
 Acq: 11 Sep 2025 12:57

Instrument :
 MSVOA_Y
 ClientSampleId :
 MOO-25-02563



Tgt Ion:180 Resp: 11254
 Ion Ratio Lower Upper
 180 100
 182 7.0 47.9 143.7#
 145 116.3 15.9 47.7#

