

Data Path : Z:\voasrv\HPCHEM1\MSVOA_Y\Data\VY092324\
 Data File : VY019663.D
 Acq On : 23 Sep 2024 13:18
 Operator : SY/MD
 Sample : P4125-01
 Misc : 5.01g/5.0mL/MSVOA_Y/SOIL/A
 ALS Vial : 7 Sample Multiplier: 1

Instrument :
 MSVOA_Y
 ClientSampleId :
 PL-01-09192024

Quant Time: Sep 23 15:55:58 2024
 Quant Method : Z:\voasrv\HPCHEM1\MSVOA_Y\methods\82Y090924S.M
 Quant Title : SW846 8260
 QLast Update : Mon Sep 09 16:00:30 2024
 Response via : Initial Calibration

Compound	R.T.	QIon	Response	Conc	Units	Dev(Min)

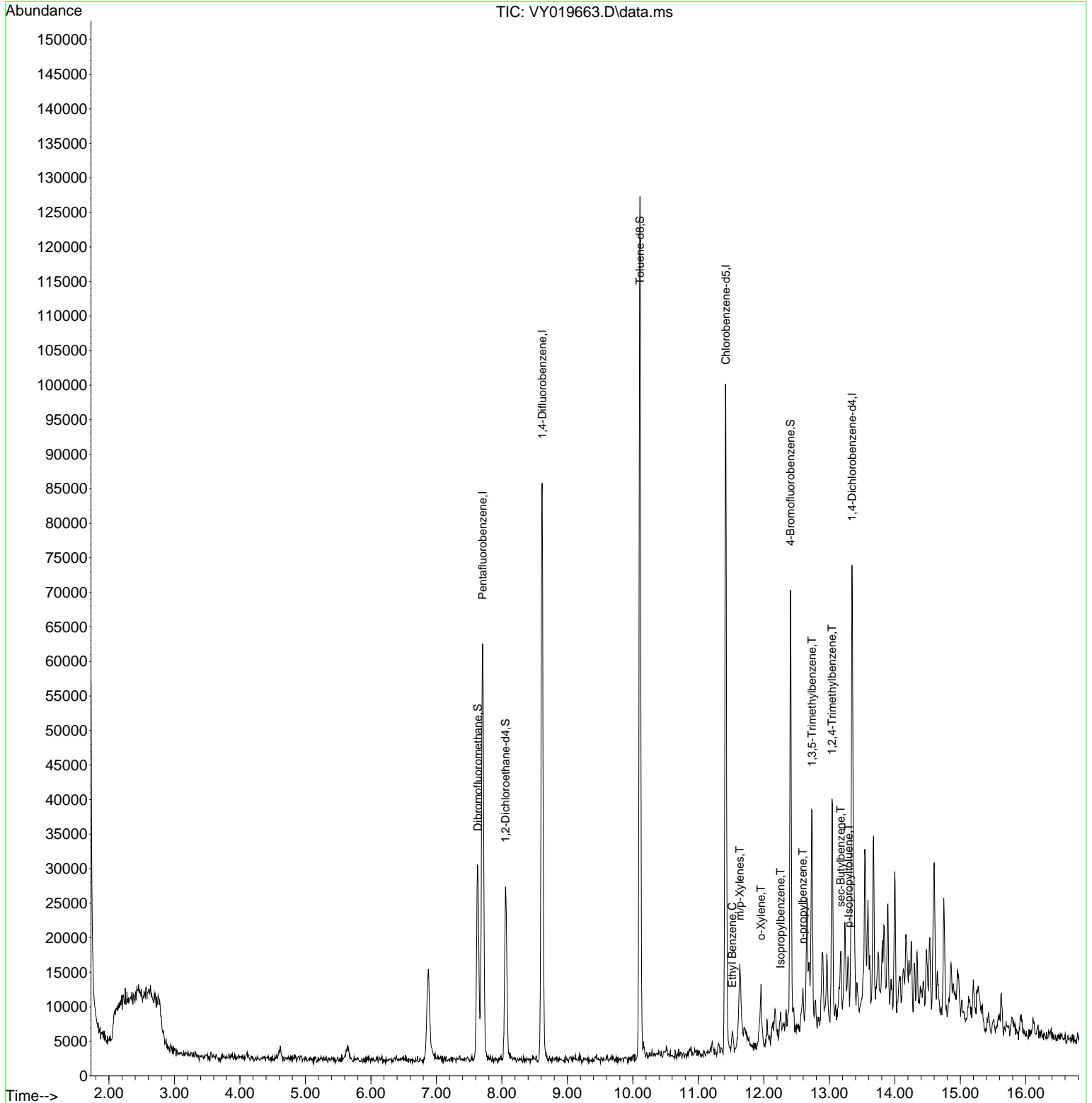
Internal Standards						
1) Pentafluorobenzene	7.707	168	45786	50.000	ug/l	0.00
34) 1,4-Difluorobenzene	8.615	114	72543	50.000	ug/l	0.00
63) Chlorobenzene-d5	11.420	117	51401	50.000	ug/l	0.00
72) 1,4-Dichlorobenzene-d4	13.346	152	15118	50.000	ug/l	0.00
System Monitoring Compounds						
33) 1,2-Dichloroethane-d4	8.055	65	20724	48.881	ug/l	0.00
Spiked Amount	50.000	Range	50 - 163	Recovery	=	97.760%
35) Dibromofluoromethane	7.634	113	20533	49.922	ug/l	0.00
Spiked Amount	50.000	Range	54 - 147	Recovery	=	99.840%
50) Toluene-d8	10.109	98	79581	52.310	ug/l	0.00
Spiked Amount	50.000	Range	58 - 134	Recovery	=	104.620%
62) 4-Bromofluorobenzene	12.407	95	20260	34.635	ug/l	0.00
Spiked Amount	50.000	Range	29 - 146	Recovery	=	69.260%
Target Compounds						
					Qvalue	
67) Ethyl Benzene	11.517	91	1957	1.089	ug/l	96
68) m/p-Xylenes	11.633	106	2167	3.190	ug/l #	56
69) o-Xylene	11.956	106	1949	2.934	ug/l	99
73) Isopropylbenzene	12.255	105	1575	1.436	ug/l	96
78) n-propylbenzene	12.596	91	4548	3.499	ug/l	96
80) 1,3,5-Trimethylbenzene	12.737	105	5974	6.700	ug/l	97
84) 1,2,4-Trimethylbenzene	13.041	105	16932	19.185	ug/l	99
85) sec-Butylbenzene	13.176	105	3851	3.284	ug/l	95
86) p-Isopropyltoluene	13.297	119	2192	2.285	ug/l #	83

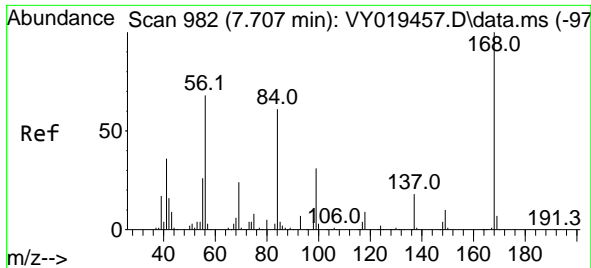
(#) = qualifier out of range (m) = manual integration (+) = signals summed

Data Path : Z:\voasrv\HPCHEM1\MSVOA_Y\Data\VY092324\
 Data File : VY019663.D
 Acq On : 23 Sep 2024 13:18
 Operator : SY/MD
 Sample : P4125-01
 Misc : 5.01g/5.0mL/MSVOA_Y/SOIL/A
 ALS Vial : 7 Sample Multiplier: 1

Instrument :
 MSVOA_Y
 ClientSampleId :
 PL-01-09192024

Quant Time: Sep 23 15:55:58 2024
 Quant Method : Z:\voasrv\HPCHEM1\MSVOA_Y\methods\82Y090924S.M
 Quant Title : SW846 8260
 QLast Update : Mon Sep 09 16:00:30 2024
 Response via : Initial Calibration

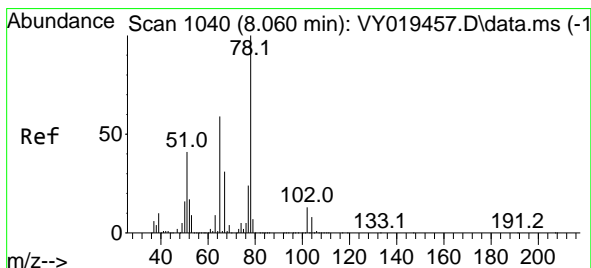
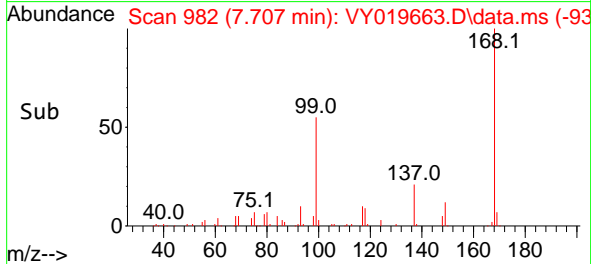
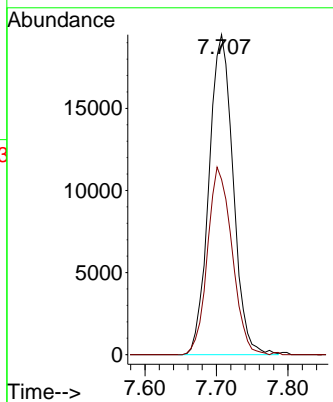
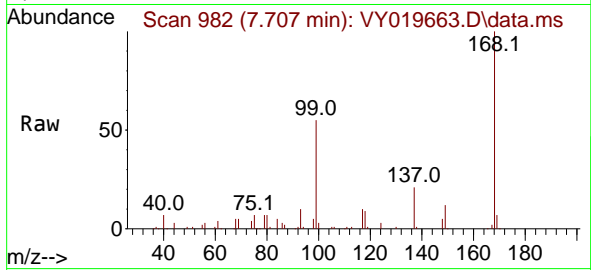




#1
 Pentafluorobenzene
 Concen: 50.000 ug/l
 RT: 7.707 min Scan# 91
 Delta R.T. 0.000 min
 Lab File: VY019663.D
 Acq: 23 Sep 2024 13:18

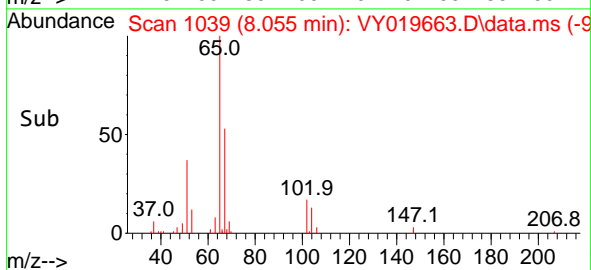
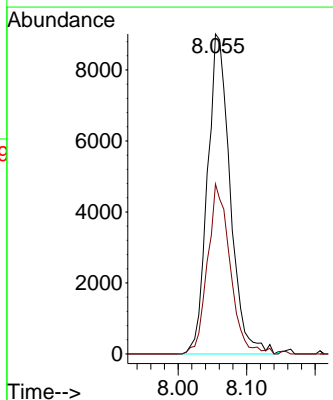
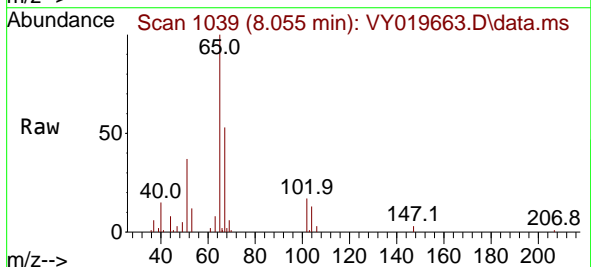
Instrument :
 MSVOA_Y
 ClientSampleId :
 PL-01-09192024

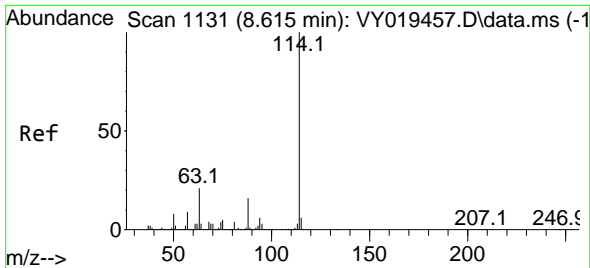
Tgt Ion:168 Resp: 45786
 Ion Ratio Lower Upper
 168 100
 99 54.7 39.1 58.7



#33
 1,2-Dichloroethane-d4
 Concen: 48.881 ug/l
 RT: 8.055 min Scan# 1039
 Delta R.T. -0.006 min
 Lab File: VY019663.D
 Acq: 23 Sep 2024 13:18

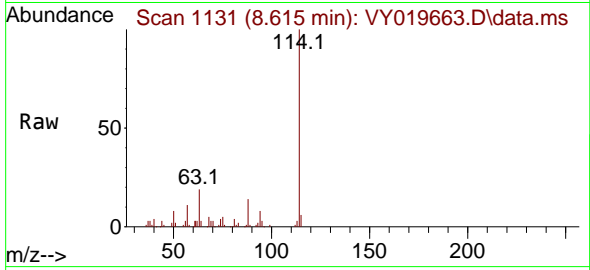
Tgt Ion: 65 Resp: 20724
 Ion Ratio Lower Upper
 65 100
 67 52.7 0.0 109.6





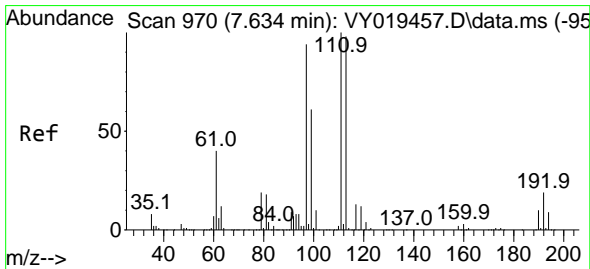
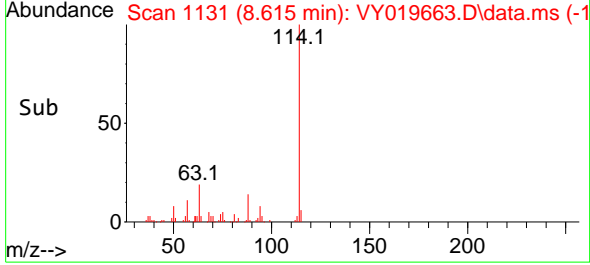
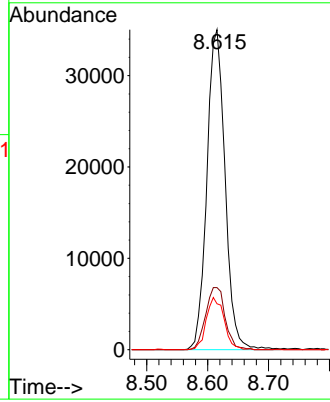
#34
 1,4-Difluorobenzene
 Concen: 50.000 ug/l
 RT: 8.615 min Scan# 1131
 Delta R.T. 0.000 min
 Lab File: VY019663.D
 Acq: 23 Sep 2024 13:18

Instrument : MSVOA_Y
 ClientSampleId : PL-01-09192024



Tgt Ion:114 Resp: 72543

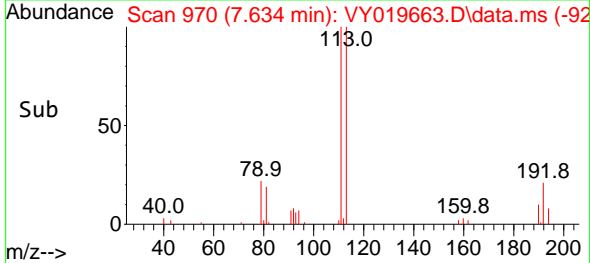
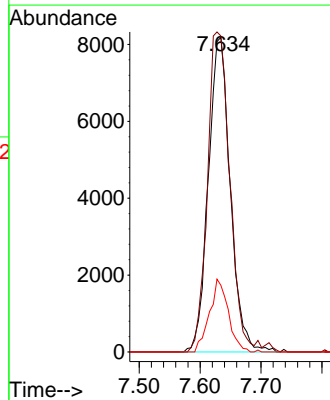
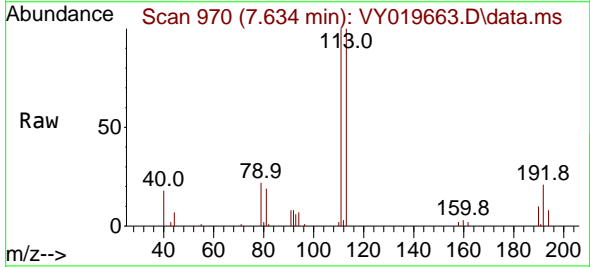
Ion	Ratio	Lower	Upper
114	100		
63	19.4	0.0	35.0
88	14.4	0.0	27.2

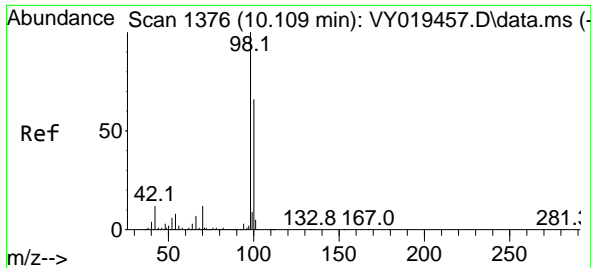


#35
 Dibromofluoromethane
 Concen: 49.922 ug/l
 RT: 7.634 min Scan# 970
 Delta R.T. 0.000 min
 Lab File: VY019663.D
 Acq: 23 Sep 2024 13:18

Tgt Ion:113 Resp: 20533

Ion	Ratio	Lower	Upper
113	100		
111	103.0	82.2	123.4
192	19.8	15.9	23.9

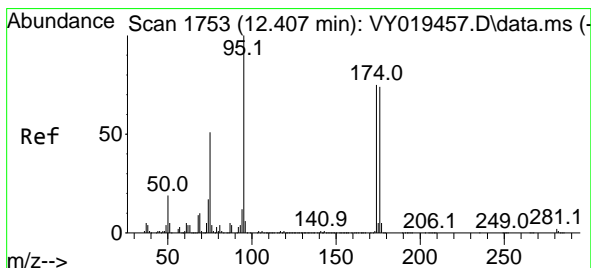
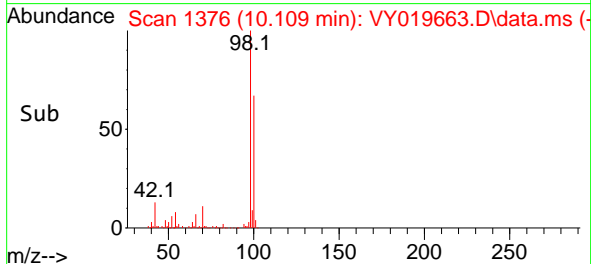
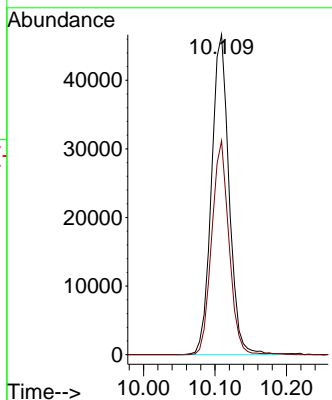
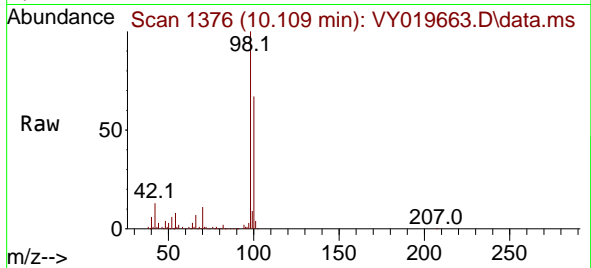




#50
 Toluene-d8
 Concen: 52.310 ug/l
 RT: 10.109 min Scan# 11
 Delta R.T. 0.000 min
 Lab File: VY019663.D
 Acq: 23 Sep 2024 13:18

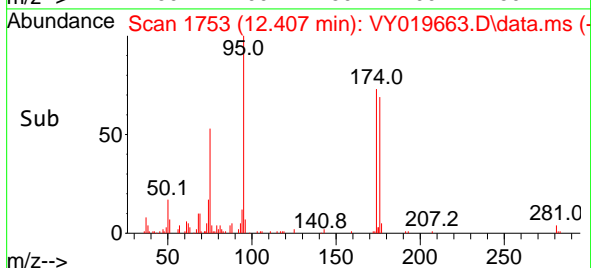
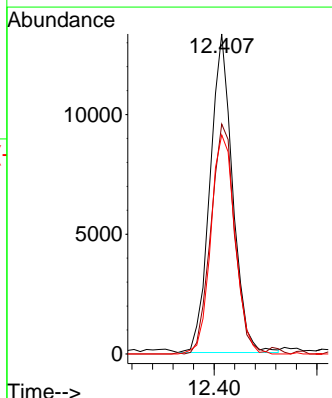
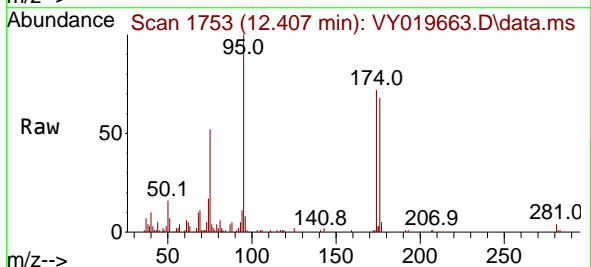
Instrument :
 MSVOA_Y
 ClientSampleId :
 PL-01-09192024

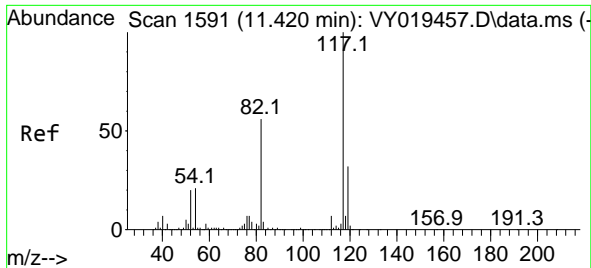
Tgt Ion: 98 Resp: 79581
 Ion Ratio Lower Upper
 98 100
 100 65.4 52.0 78.0



#62
 4-Bromofluorobenzene
 Concen: 34.635 ug/l
 RT: 12.407 min Scan# 1753
 Delta R.T. 0.000 min
 Lab File: VY019663.D
 Acq: 23 Sep 2024 13:18

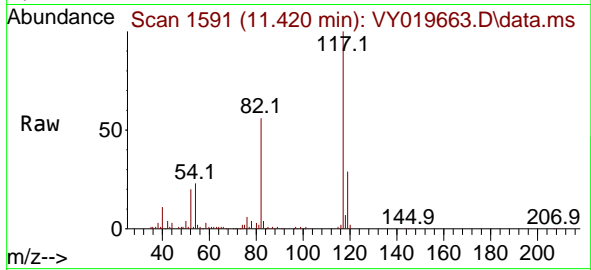
Tgt Ion: 95 Resp: 20260
 Ion Ratio Lower Upper
 95 100
 174 76.5 0.0 175.6
 176 73.7 0.0 171.4





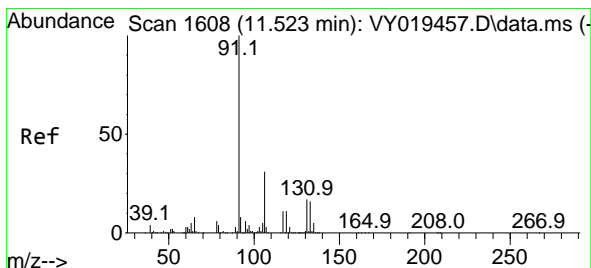
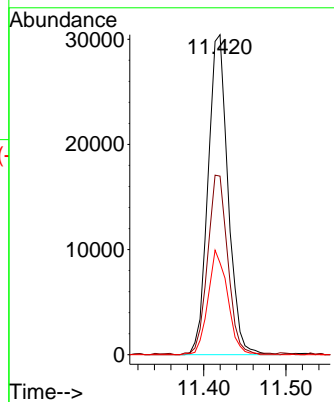
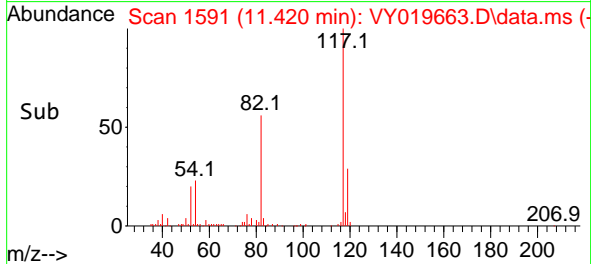
#63
 Chlorobenzene-d5
 Concen: 50.000 ug/l
 RT: 11.420 min Scan# 11
 Delta R.T. 0.000 min
 Lab File: VY019663.D
 Acq: 23 Sep 2024 13:18

Instrument :
 MSVOA_Y
 ClientSampleId :
 PL-01-09192024

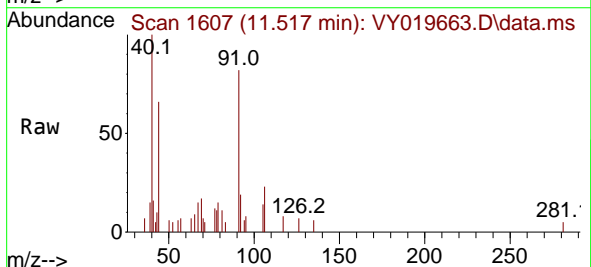


Tgt Ion:117 Resp: 51401

Ion	Ratio	Lower	Upper
117	100		
82	55.8	42.4	63.6
119	28.7	25.9	38.9

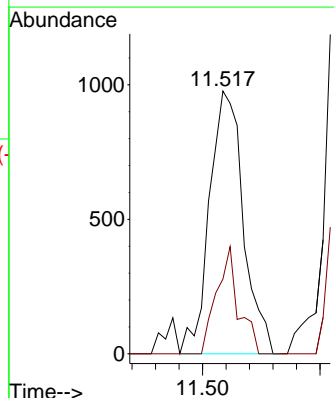
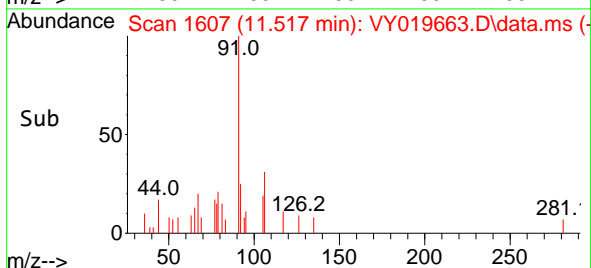


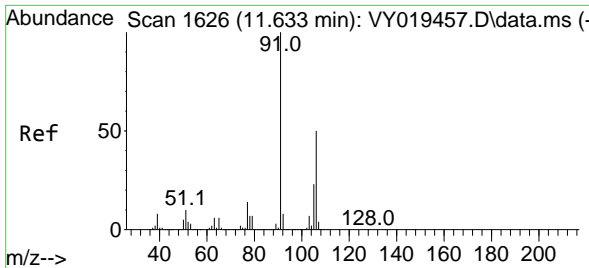
#67
 Ethyl Benzene
 Concen: 1.089 ug/l
 RT: 11.517 min Scan# 1607
 Delta R.T. -0.006 min
 Lab File: VY019663.D
 Acq: 23 Sep 2024 13:18



Tgt Ion: 91 Resp: 1957

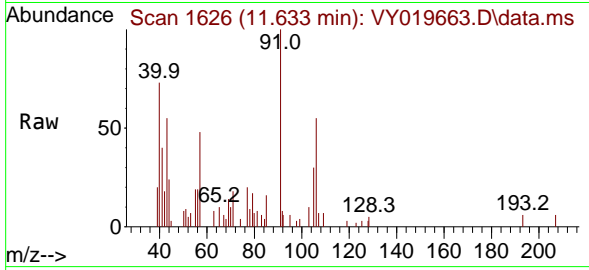
Ion	Ratio	Lower	Upper
91	100		
106	28.5	24.5	36.7



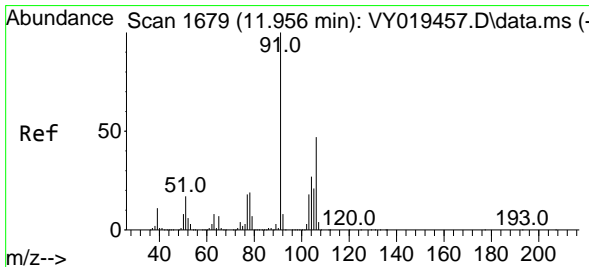
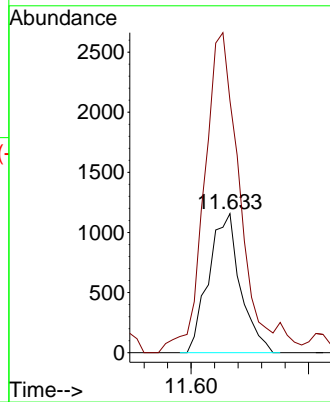
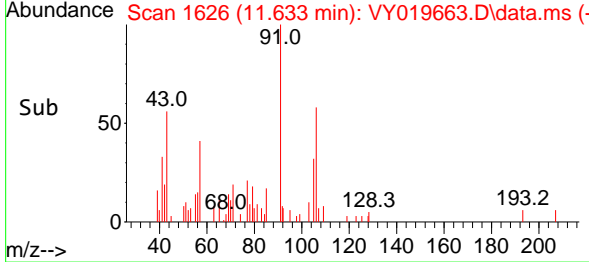


#68
 m/p-Xylenes
 Concen: 3.190 ug/l
 RT: 11.633 min Scan# 1626
 Delta R.T. 0.000 min
 Lab File: VY019663.D
 Acq: 23 Sep 2024 13:18

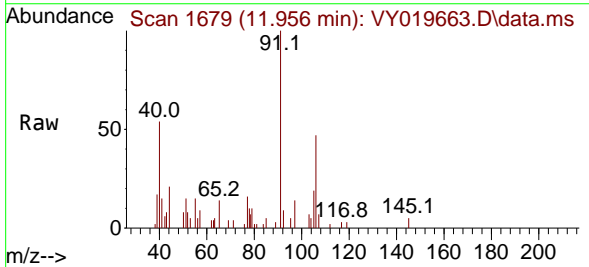
Instrument : MSVOA_Y
 ClientSampleId : PL-01-09192024



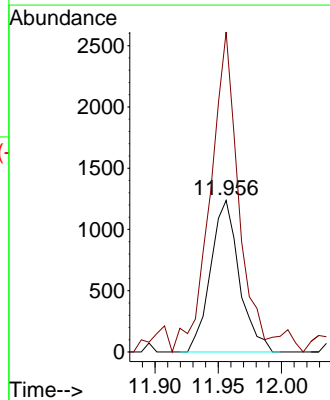
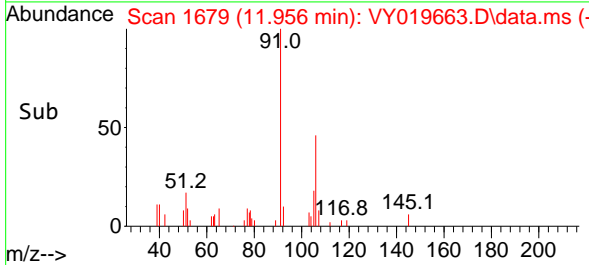
Tgt Ion:106 Resp: 2167
 Ion Ratio Lower Upper
 106 100
 91 260.0 156.0 234.0#

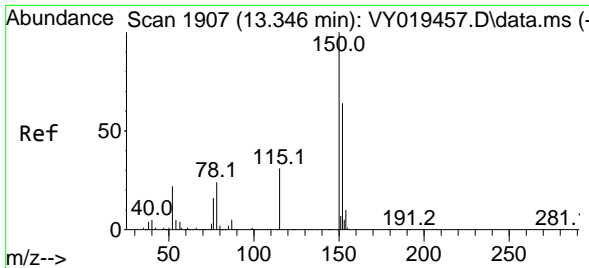


#69
 o-Xylene
 Concen: 2.934 ug/l
 RT: 11.956 min Scan# 1679
 Delta R.T. 0.000 min
 Lab File: VY019663.D
 Acq: 23 Sep 2024 13:18



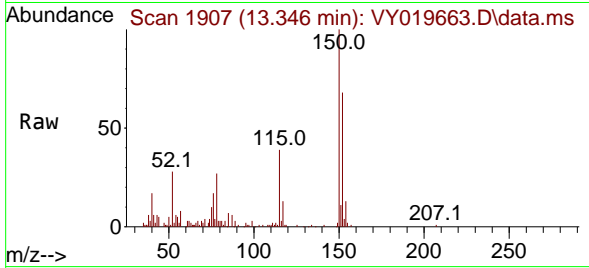
Tgt Ion:106 Resp: 1949
 Ion Ratio Lower Upper
 106 100
 91 208.3 103.6 310.8



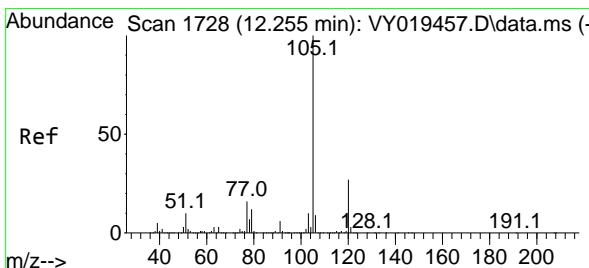
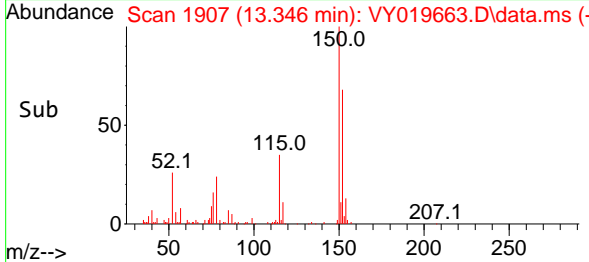
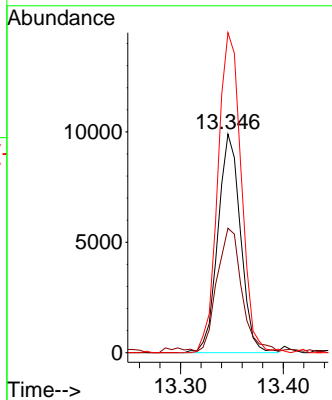


#72
 1,4-Dichlorobenzene-d4
 Concen: 50.000 ug/l
 RT: 13.346 min Scan# 1907
 Delta R.T. 0.000 min
 Lab File: VY019663.D
 Acq: 23 Sep 2024 13:18

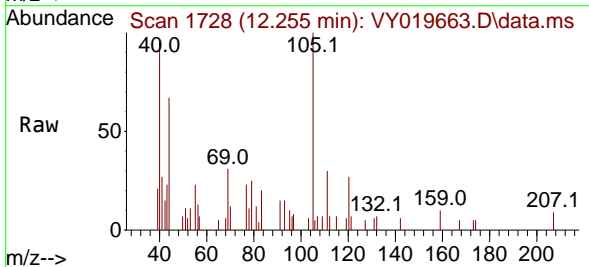
Instrument : MSVOA_Y
 ClientSampleId : PL-01-09192024



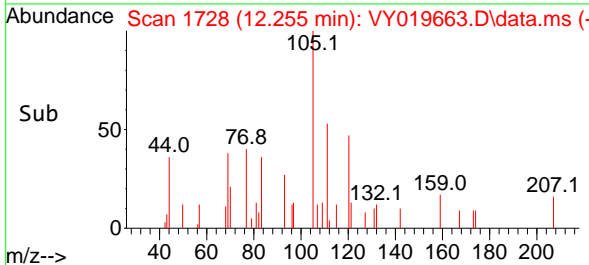
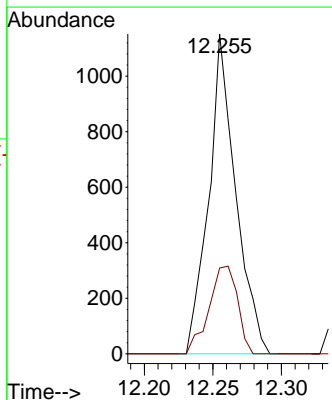
Tgt Ion	Resp	Lower	Upper
152	15118	100	100
115	61.6	28.2	84.7
150	151.4	0.0	345.6

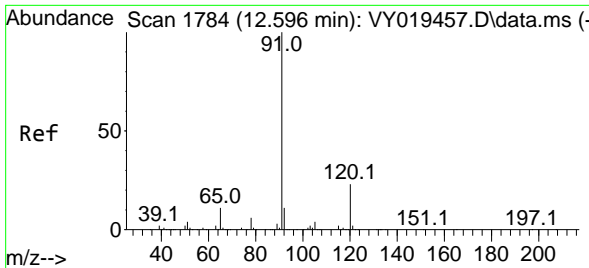


#73
 Isopropylbenzene
 Concen: 1.436 ug/l
 RT: 12.255 min Scan# 1728
 Delta R.T. 0.000 min
 Lab File: VY019663.D
 Acq: 23 Sep 2024 13:18



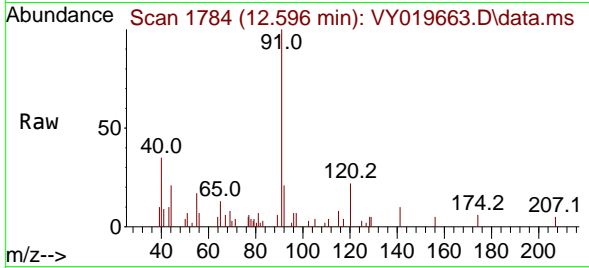
Tgt Ion	Resp	Lower	Upper
105	1575	100	100
120	29.0	13.4	40.1



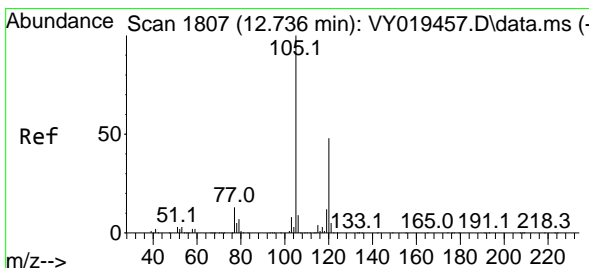
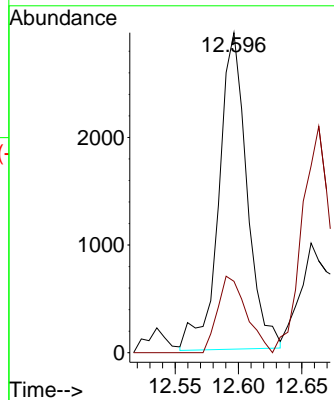
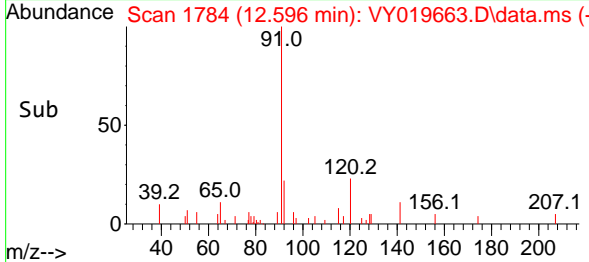


#78
 n-propylbenzene
 Concen: 3.499 ug/l
 RT: 12.596 min Scan# 11
 Delta R.T. 0.000 min
 Lab File: VY019663.D
 Acq: 23 Sep 2024 13:18

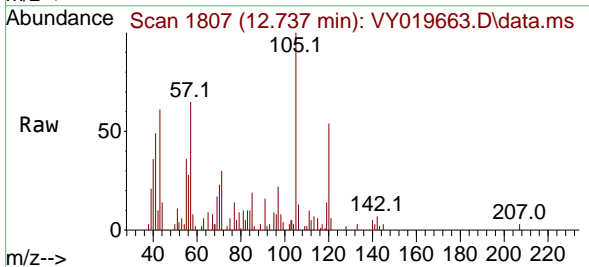
Instrument :
 MSVOA_Y
 ClientSampleId :
 PL-01-09192024



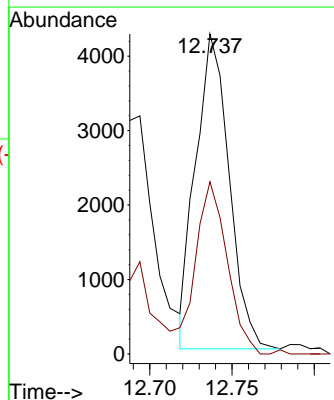
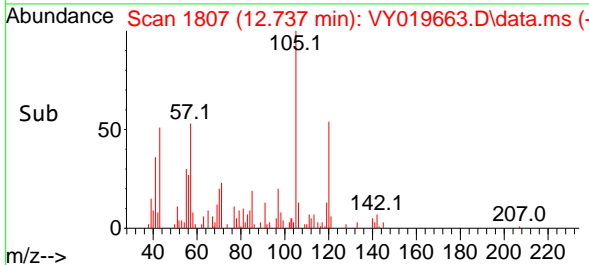
Tgt Ion: 91 Resp: 4548
 Ion Ratio Lower Upper
 91 100
 120 24.6 11.5 34.4

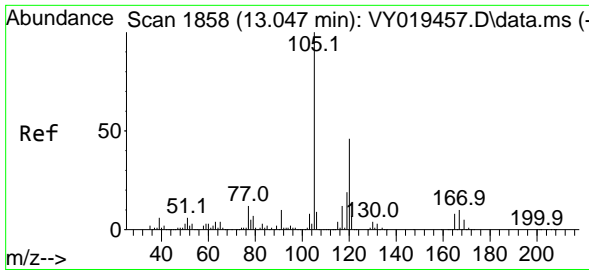


#80
 1,3,5-Trimethylbenzene
 Concen: 6.700 ug/l
 RT: 12.737 min Scan# 1807
 Delta R.T. 0.000 min
 Lab File: VY019663.D
 Acq: 23 Sep 2024 13:18



Tgt Ion: 105 Resp: 5974
 Ion Ratio Lower Upper
 105 100
 120 52.3 25.1 75.2

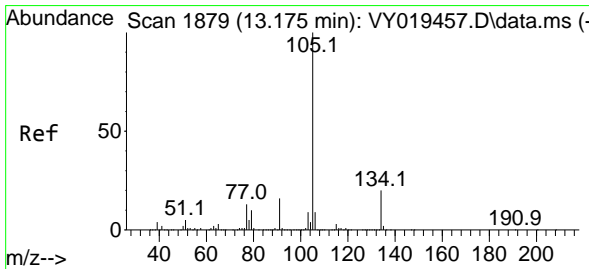
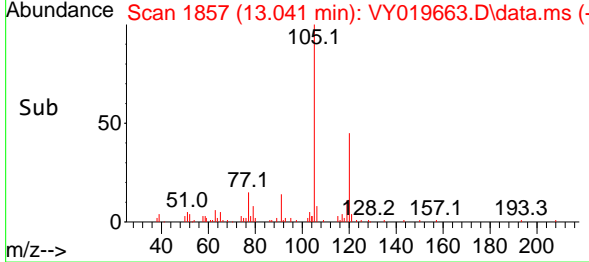
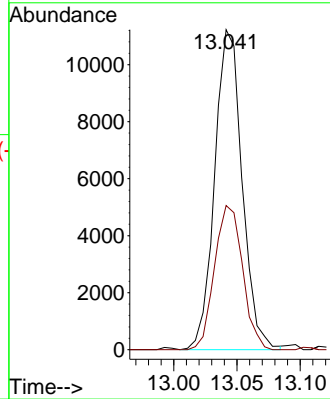
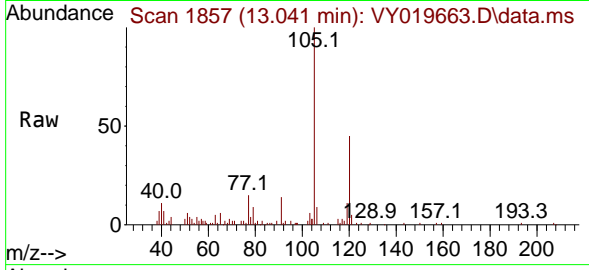




#84
 1,2,4-Trimethylbenzene
 Concen: 19.185 ug/l
 RT: 13.041 min Scan# 1857
 Delta R.T. -0.006 min
 Lab File: VY019663.D
 Acq: 23 Sep 2024 13:18

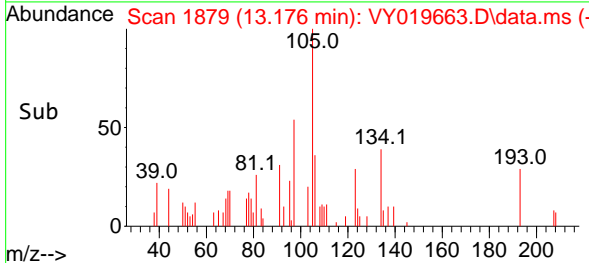
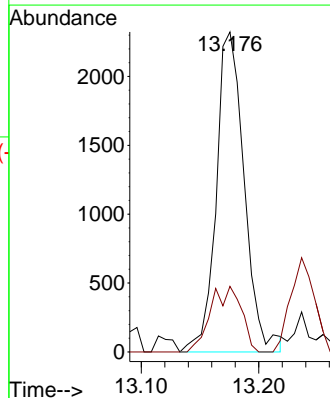
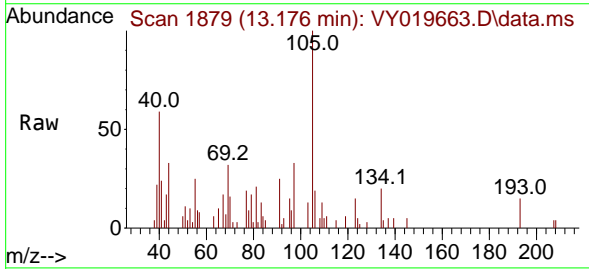
Instrument : MSVOA_Y
 ClientSampleId : PL-01-09192024

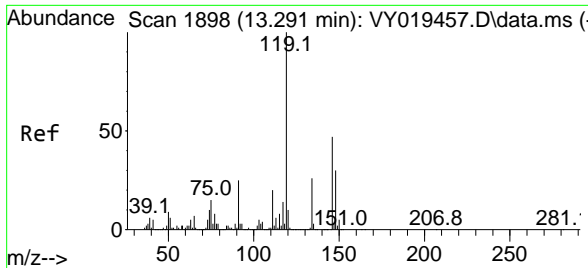
Tgt Ion:105 Resp: 16932
 Ion Ratio Lower Upper
 105 100
 120 46.0 23.2 69.6



#85
 sec-Butylbenzene
 Concen: 3.284 ug/l
 RT: 13.176 min Scan# 1879
 Delta R.T. 0.000 min
 Lab File: VY019663.D
 Acq: 23 Sep 2024 13:18

Tgt Ion:105 Resp: 3851
 Ion Ratio Lower Upper
 105 100
 134 22.5 10.1 30.1





#86
 p-Isopropyltoluene
 Concen: 2.285 ug/l
 RT: 13.297 min Scan# 11
 Delta R.T. 0.006 min
 Lab File: VY019663.D
 Acq: 23 Sep 2024 13:18

Instrument : MSVOA_Y
 ClientSampleId : PL-01-09192024

Tgt Ion	Resp	Lower	Upper
119	100		
134	30.0	13.1	39.3
91	34.4	10.7	32.1#

