

Data Path : Z:\voasrv\HPCHEM1\MSVOA_Y\Data\VY092324\
 Data File : VY019669.D
 Acq On : 23 Sep 2024 16:01
 Operator : SY/MD
 Sample : P4123-01
 Misc : 5.02g/5.0mL/MSVOA_Y/SOIL/A
 ALS Vial : 14 Sample Multiplier: 1

Instrument :
 MSVOA_Y
 ClientSampleId :
 910-B

Quant Time: Sep 24 01:46:46 2024
 Quant Method : Z:\voasrv\HPCHEM1\MSVOA_Y\methods\82Y090924S.M
 Quant Title : SW846 8260
 QLast Update : Mon Sep 09 16:00:30 2024
 Response via : Initial Calibration

Compound	R.T.	QIon	Response	Conc	Units	Dev(Min)

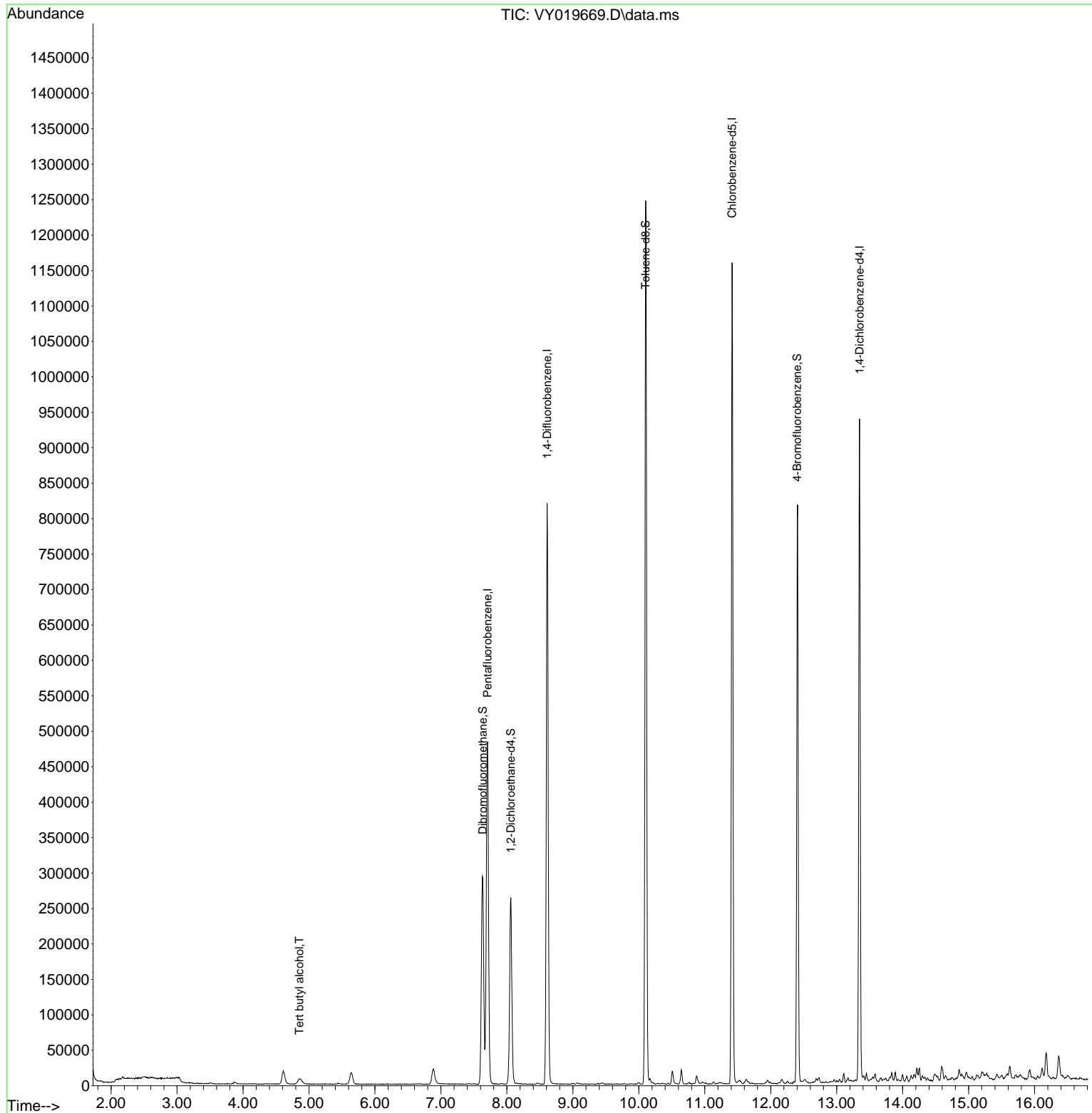
Internal Standards						
1) Pentafluorobenzene	7.707	168	367330	50.000	ug/l	# 0.00
34) 1,4-Difluorobenzene	8.610	114	690395	50.000	ug/l	0.00
63) Chlorobenzene-d5	11.414	117	607210	50.000	ug/l	0.00
72) 1,4-Dichlorobenzene-d4	13.347	152	225865	50.000	ug/l	0.00
System Monitoring Compounds						
33) 1,2-Dichloroethane-d4	8.061	65	206763	60.788	ug/l	0.00
Spiked Amount	50.000	Range	50 - 163	Recovery	=	121.580%
35) Dibromofluoromethane	7.634	113	216701	55.360	ug/l	0.00
Spiked Amount	50.000	Range	54 - 147	Recovery	=	110.720%
50) Toluene-d8	10.103	98	814011	56.222	ug/l	0.00
Spiked Amount	50.000	Range	58 - 134	Recovery	=	112.440%
62) 4-Bromofluorobenzene	12.402	95	261147	46.909	ug/l	0.00
Spiked Amount	50.000	Range	29 - 146	Recovery	=	93.820%
Target Compounds						
11) Tert butyl alcohol	4.854	59	16729	60.901	ug/l	Qvalue 100

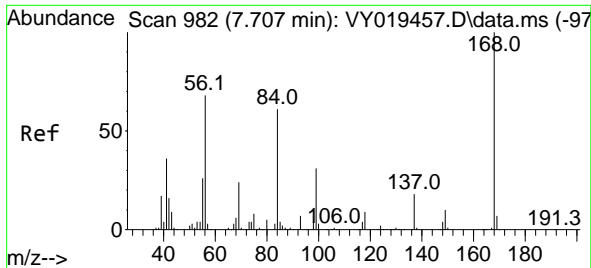
(#) = qualifier out of range (m) = manual integration (+) = signals summed

Data Path : Z:\voasrv\HPCHEM1\MSVOA_Y\Data\VY092324\
 Data File : VY019669.D
 Acq On : 23 Sep 2024 16:01
 Operator : SY/MD
 Sample : P4123-01
 Misc : 5.02g/5.0mL/MSVOA_Y/SOIL/A
 ALS Vial : 14 Sample Multiplier: 1

Instrument :
 MSVOA_Y
 ClientSampleId :
 910-B

Quant Time: Sep 24 01:46:46 2024
 Quant Method : Z:\voasrv\HPCHEM1\MSVOA_Y\methods\82Y090924S.M
 Quant Title : SW846 8260
 QLast Update : Mon Sep 09 16:00:30 2024
 Response via : Initial Calibration

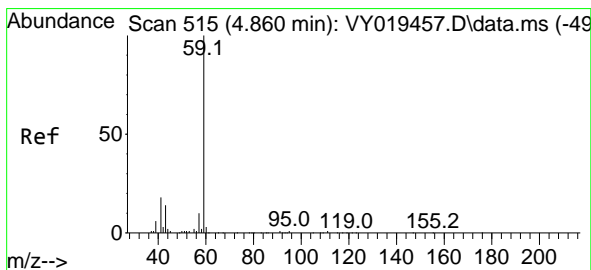
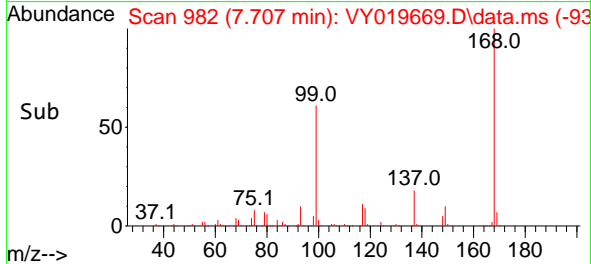
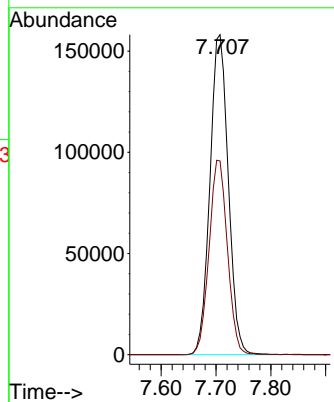
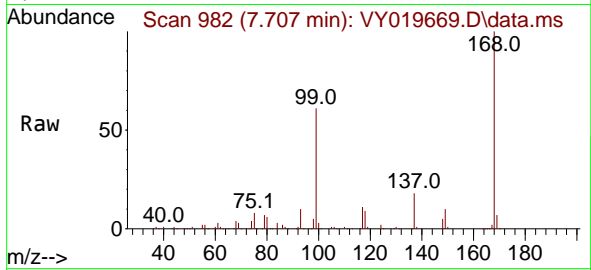




#1
 Pentafluorobenzene
 Concen: 50.000 ug/l
 RT: 7.707 min Scan# 910
 Delta R.T. 0.000 min
 Lab File: VY019669.D
 Acq: 23 Sep 2024 16:01

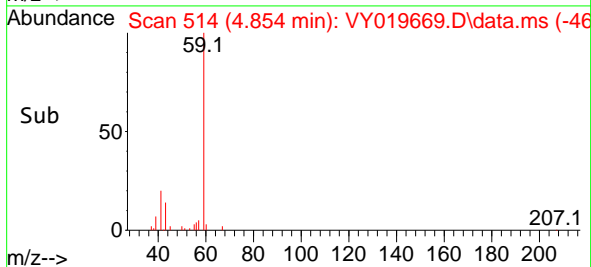
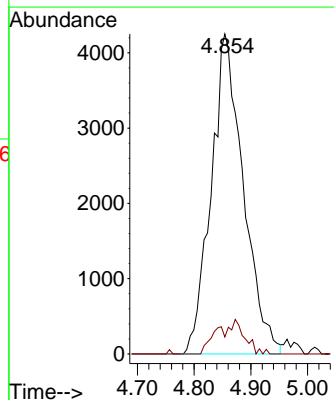
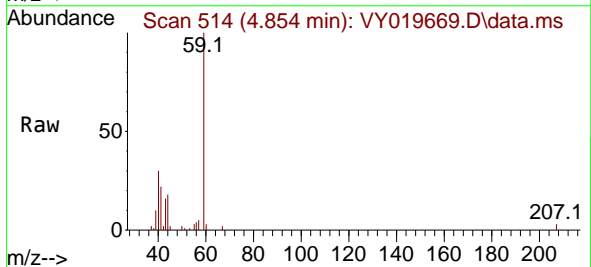
Instrument : MSVOA_Y
 ClientSampleId : 910-B

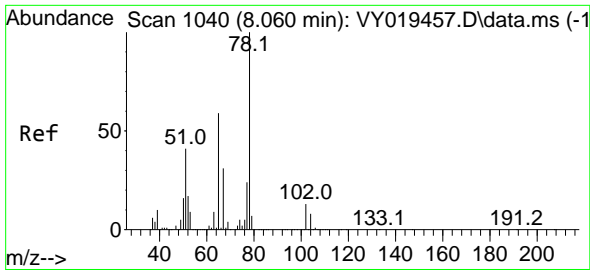
Tgt Ion:168 Resp: 367330
 Ion Ratio Lower Upper
 168 100
 99 60.6 39.1 58.7#



#11
 Tert butyl alcohol
 Concen: 60.901 ug/l
 RT: 4.854 min Scan# 514
 Delta R.T. -0.006 min
 Lab File: VY019669.D
 Acq: 23 Sep 2024 16:01

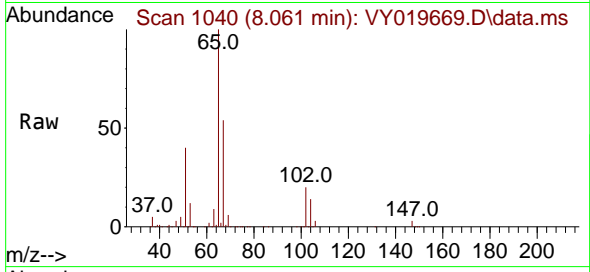
Tgt Ion: 59 Resp: 16729
 Ion Ratio Lower Upper
 59 100
 57 3.7 3.0 4.6



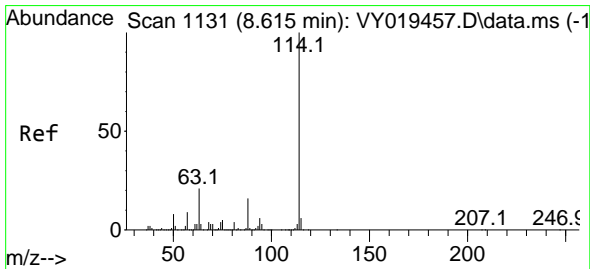
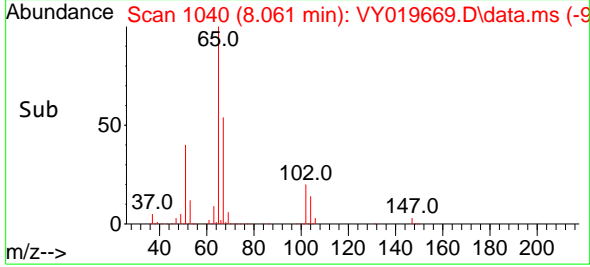
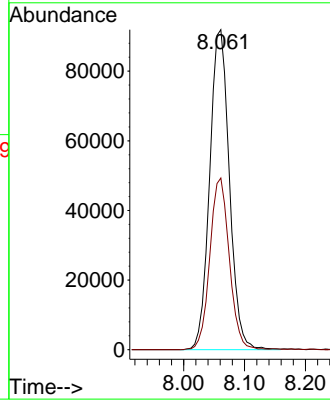


#33
 1,2-Dichloroethane-d4
 Concen: 60.788 ug/l
 RT: 8.061 min Scan# 110
 Delta R.T. 0.000 min
 Lab File: VY019669.D
 Acq: 23 Sep 2024 16:01

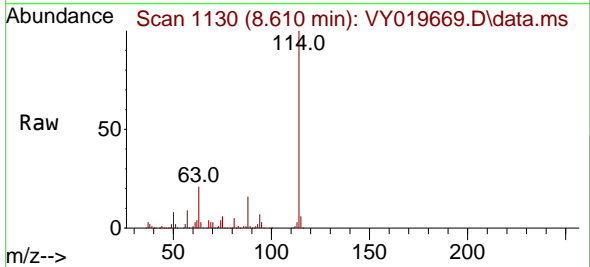
Instrument : MSVOA_Y
 ClientSampleId : 910-B



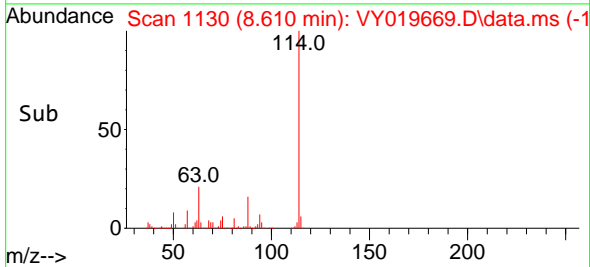
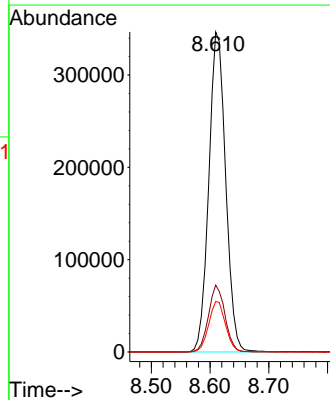
Tgt Ion: 65 Resp: 206763
 Ion Ratio Lower Upper
 65 100
 67 52.9 0.0 109.6

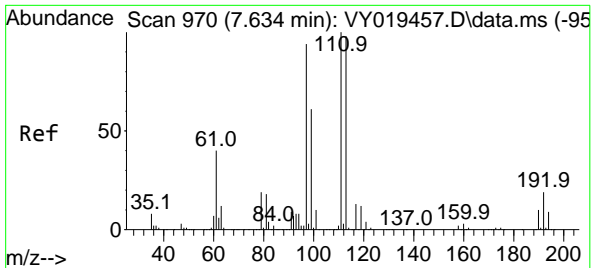


#34
 1,4-Difluorobenzene
 Concen: 50.000 ug/l
 RT: 8.610 min Scan# 1130
 Delta R.T. -0.006 min
 Lab File: VY019669.D
 Acq: 23 Sep 2024 16:01



Tgt Ion: 114 Resp: 690395
 Ion Ratio Lower Upper
 114 100
 63 20.9 0.0 35.0
 88 15.8 0.0 27.2

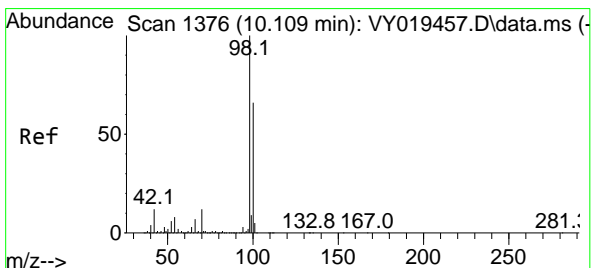
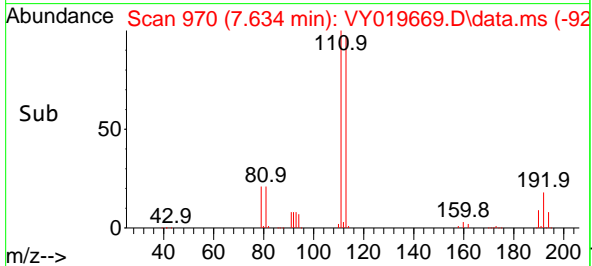
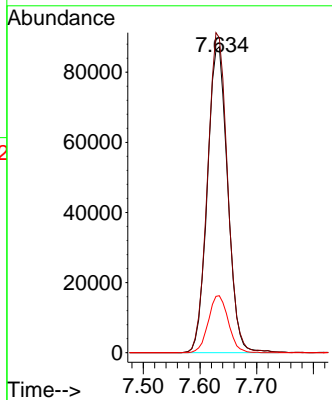
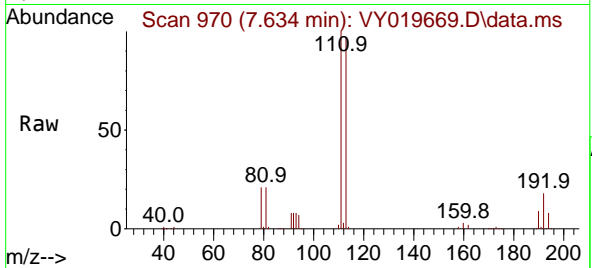




#35
 Dibromofluoromethane
 Concen: 55.360 ug/l
 RT: 7.634 min Scan# 91
 Delta R.T. 0.000 min
 Lab File: VY019669.D
 Acq: 23 Sep 2024 16:01

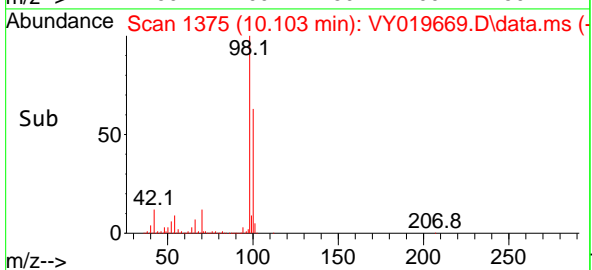
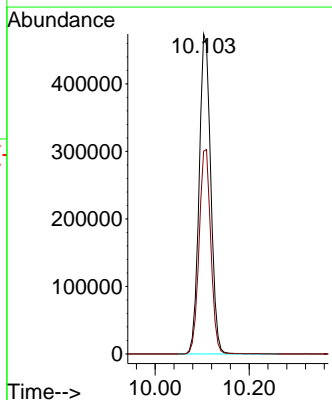
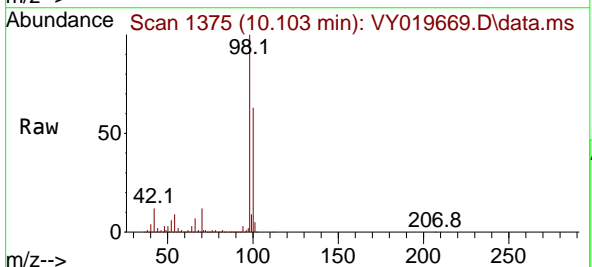
Instrument :
 MSVOA_Y
 ClientSampleId :
 910-B

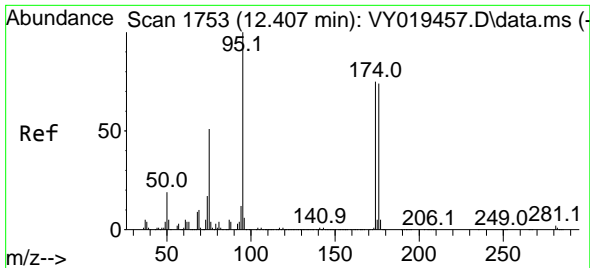
Tgt Ion:113 Resp: 216701
 Ion Ratio Lower Upper
 113 100
 111 103.4 82.2 123.4
 192 18.3 15.9 23.9



#50
 Toluene-d8
 Concen: 56.222 ug/l
 RT: 10.103 min Scan# 1375
 Delta R.T. -0.006 min
 Lab File: VY019669.D
 Acq: 23 Sep 2024 16:01

Tgt Ion: 98 Resp: 814011
 Ion Ratio Lower Upper
 98 100
 100 64.2 52.0 78.0

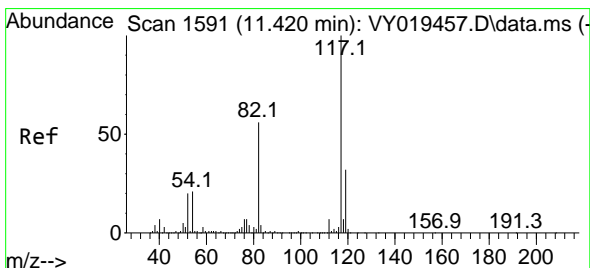
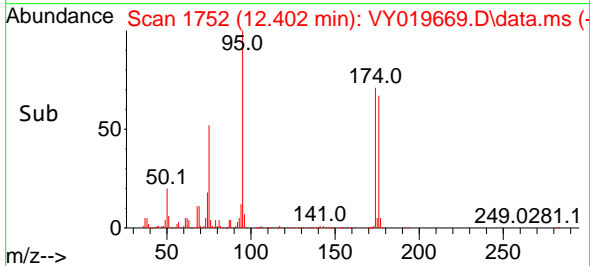
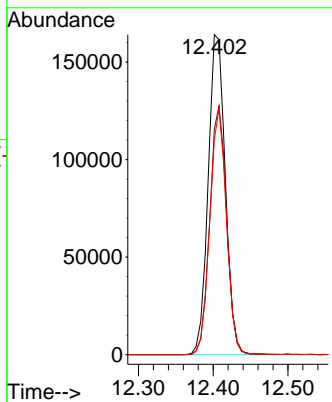
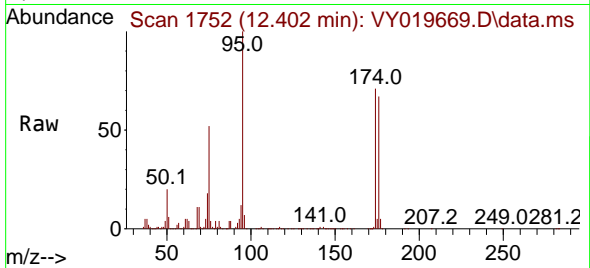




#62
 4-Bromofluorobenzene
 Concen: 46.909 ug/l
 RT: 12.402 min Scan# 11
 Delta R.T. -0.006 min
 Lab File: VY019669.D
 Acq: 23 Sep 2024 16:01

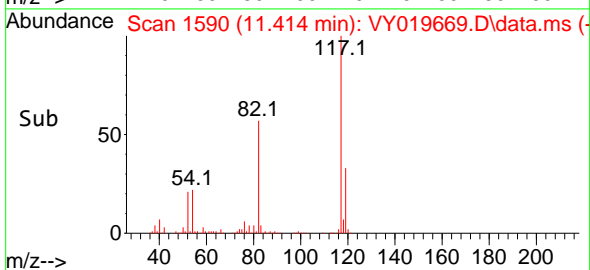
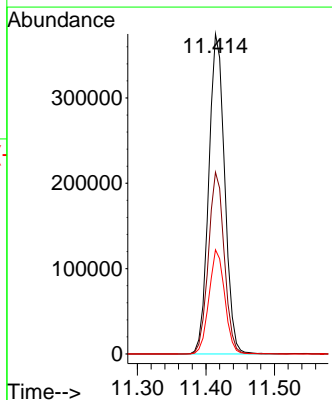
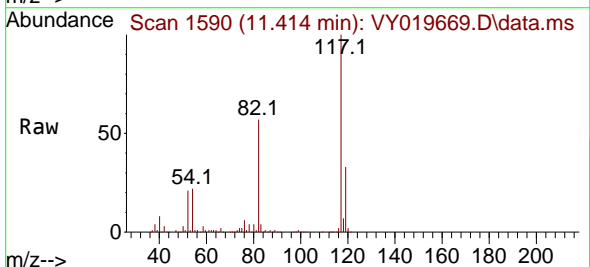
Instrument :
 MSVOA_Y
 ClientSampleId :
 910-B

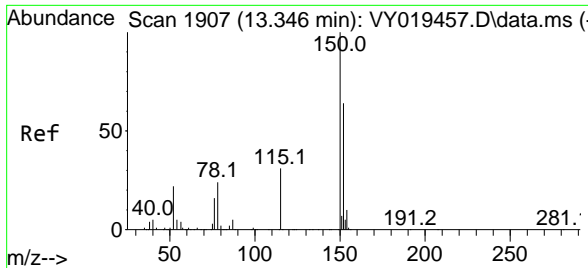
Tgt Ion: 95 Resp: 261147
 Ion Ratio Lower Upper
 95 100
 174 76.7 0.0 175.6
 176 74.0 0.0 171.4



#63
 Chlorobenzene-d5
 Concen: 50.000 ug/l
 RT: 11.414 min Scan# 1590
 Delta R.T. -0.006 min
 Lab File: VY019669.D
 Acq: 23 Sep 2024 16:01

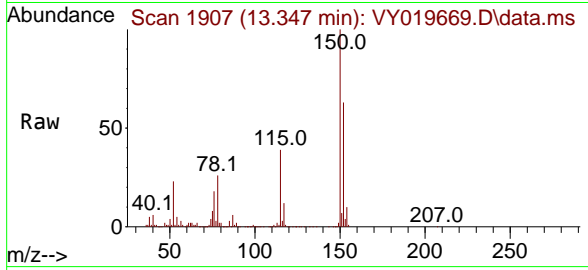
Tgt Ion: 117 Resp: 607210
 Ion Ratio Lower Upper
 117 100
 82 56.8 42.4 63.6
 119 32.6 25.9 38.9





#72
 1,4-Dichlorobenzene-d4
 Concen: 50.000 ug/l
 RT: 13.347 min Scan# 1907
 Delta R.T. 0.000 min
 Lab File: VY019669.D
 Acq: 23 Sep 2024 16:01

Instrument : MSVOA_Y
 ClientSampleId : 910-B



Tgt Ion:152 Resp: 225865

Ion	Ratio	Lower	Upper
152	100		
115	61.2	28.2	84.7
150	156.6	0.0	345.6

