

Data Path : Z:\voasrv\HPCHEM1\MSVOA_Y\Data\VY100925\
 Data File : VY023416.D
 Acq On : 09 Oct 2025 12:34
 Operator : SY/MD
 Sample : Q3310-01
 Misc : 8.41g/5.0mL/MSVOA_Y/SOIL/A
 ALS Vial : 11 Sample Multiplier: 1

Instrument :
 MSVOA_Y
 ClientSampleId :
 SS-01-0-1

Quant Time: Oct 10 04:25:26 2025
 Quant Method : Z:\voasrv\HPCHEM1\MSVOA_Y\methods\82Y100725S.M
 Quant Title : SW846 8260
 QLast Update : Wed Oct 08 05:12:50 2025
 Response via : Initial Calibration

Compound	R.T.	QIon	Response	Conc	Units	Dev(Min)

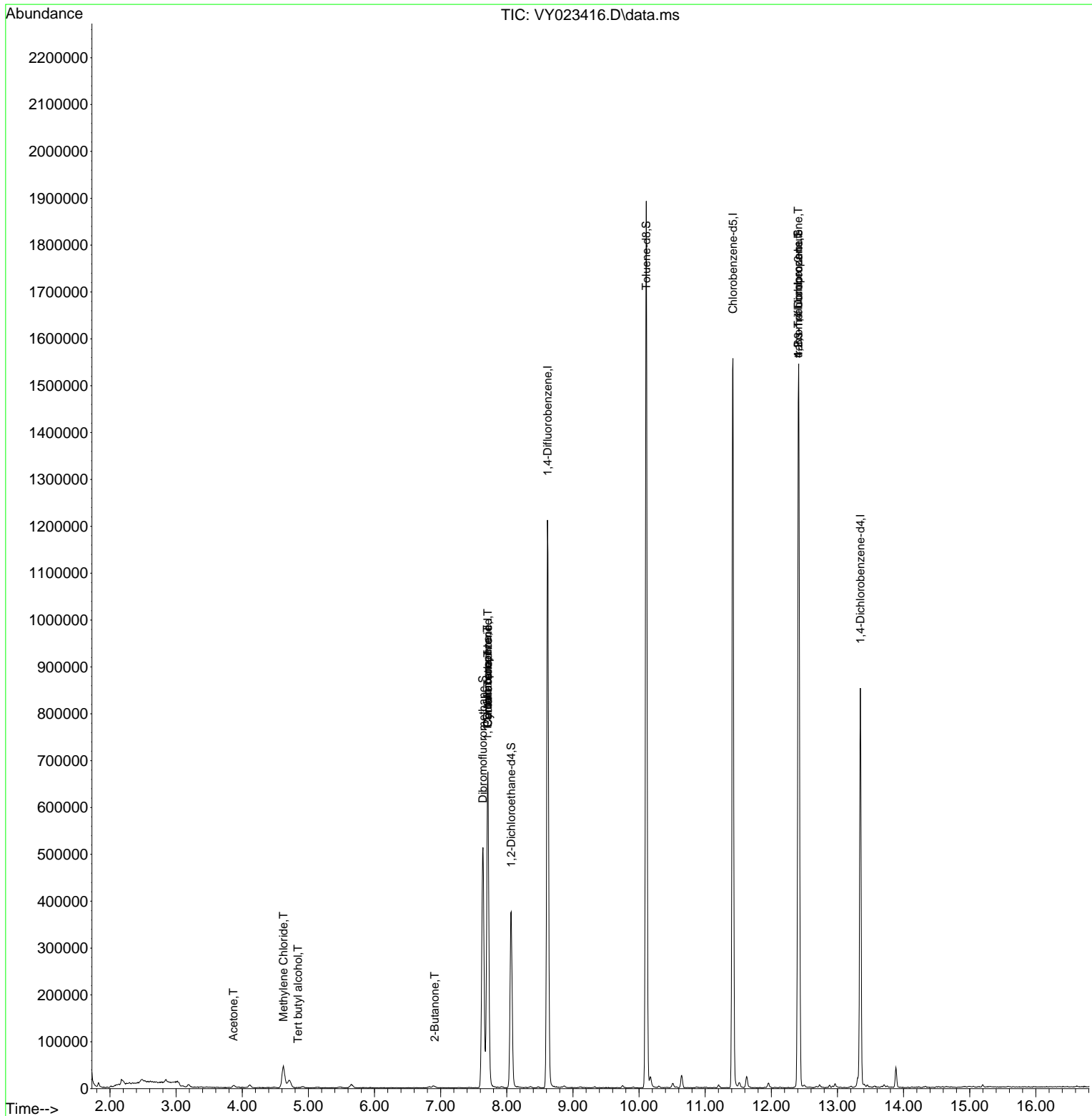
Internal Standards						
1) Pentafluorobenzene	7.713	168	559404	50.000	ug/l	0.00
34) 1,4-Difluorobenzene	8.616	114	1093543	50.000	ug/l	0.00
63) Chlorobenzene-d5	11.420	117	911689	50.000	ug/l	0.00
72) 1,4-Dichlorobenzene-d4	13.346	152	232592	50.000	ug/l	0.00
System Monitoring Compounds						
33) 1,2-Dichloroethane-d4	8.067	65	297204	63.535	ug/l	0.00
Spiked Amount	50.000	Range	50 - 163	Recovery	=	127.060%
35) Dibromofluoromethane	7.640	113	371179	55.241	ug/l	0.00
Spiked Amount	50.000	Range	54 - 147	Recovery	=	110.480%
50) Toluene-d8	10.109	98	1259289	50.325	ug/l	0.00
Spiked Amount	50.000	Range	58 - 134	Recovery	=	100.640%
62) 4-Bromofluorobenzene	12.408	95	300320	36.352	ug/l	0.00
Spiked Amount	50.000	Range	30 - 143	Recovery	=	72.700%
Target Compounds						
					Qvalue	
11) Tert butyl alcohol	4.842	59	395	1.135	ug/l #	72
16) Acetone	3.866	43	8182	7.347	ug/l	94
20) Methylene Chloride	4.622	84	35453	5.887	ug/l	95
25) 2-Butanone	6.909	43	1713	1.260	ug/l #	75
31) Cyclohexane	7.713	56	9697	1.246	ug/l #	1
36) 1,1-Dichloropropene	7.707	75	37332	4.197	ug/l #	47
38) Carbon Tetrachloride	7.713	117	52112	4.831	ug/l #	16
76) 1,2,3-Trichloropropane	12.408	75	150965	73.567	ug/l #	100
81) trans-1,4-Dichloro-2-b...	12.408	75	150965	180.400	ug/l #	15

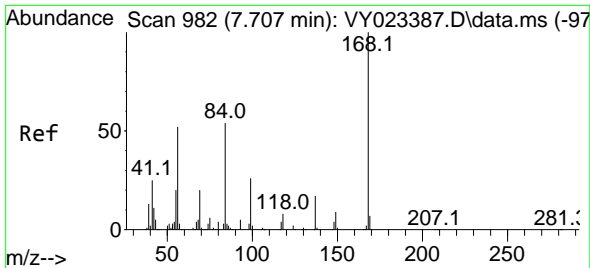
(#) = qualifier out of range (m) = manual integration (+) = signals summed

Data Path : Z:\voasrv\HPCHEM1\MSVOA_Y\Data\VY100925\
 Data File : VY023416.D
 Acq On : 09 Oct 2025 12:34
 Operator : SY/MD
 Sample : Q3310-01
 Misc : 8.41g/5.0mL/MSVOA_Y/SOIL/A
 ALS Vial : 11 Sample Multiplier: 1

Instrument :
 MSVOA_Y
 ClientSampleId :
 SS-01-0-1

Quant Time: Oct 10 04:25:26 2025
 Quant Method : Z:\voasrv\HPCHEM1\MSVOA_Y\methods\82Y100725S.M
 Quant Title : SW846 8260
 QLast Update : Wed Oct 08 05:12:50 2025
 Response via : Initial Calibration

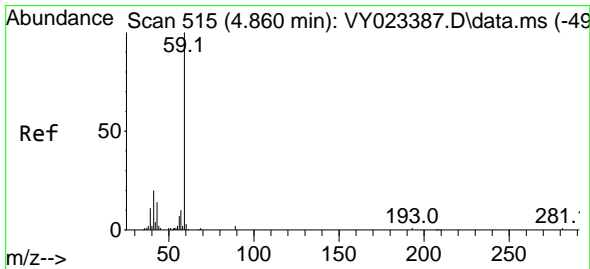
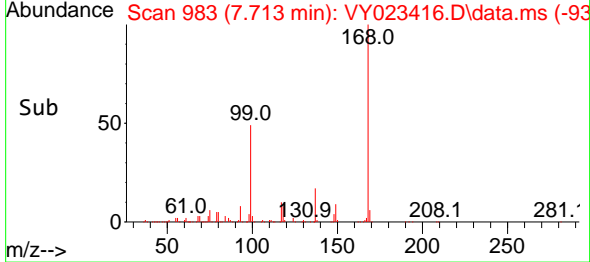
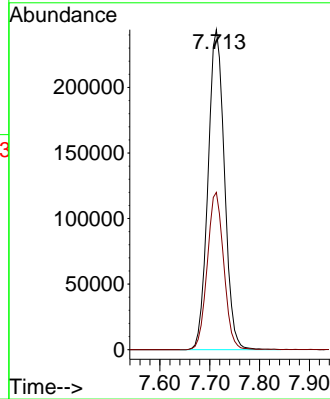
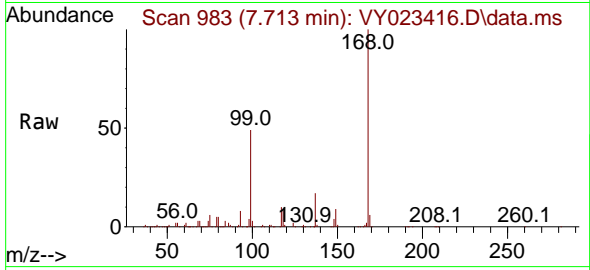




#1
 Pentafluorobenzene
 Concen: 50.000 ug/l
 RT: 7.713 min Scan# 91
 Delta R.T. 0.006 min
 Lab File: VY023416.D
 Acq: 09 Oct 2025 12:34

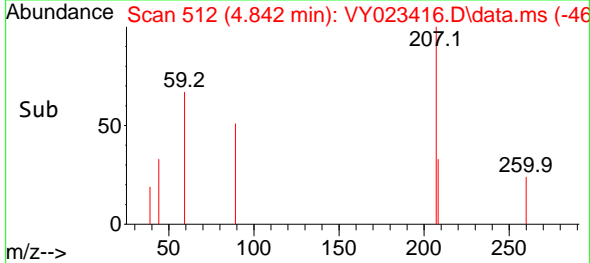
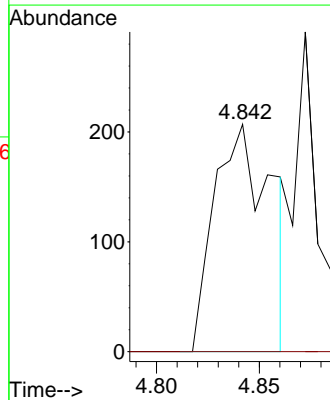
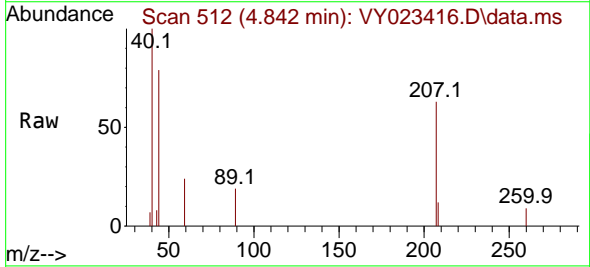
Instrument : MSVOA_Y
 ClientSampleId : SS-01-0-1

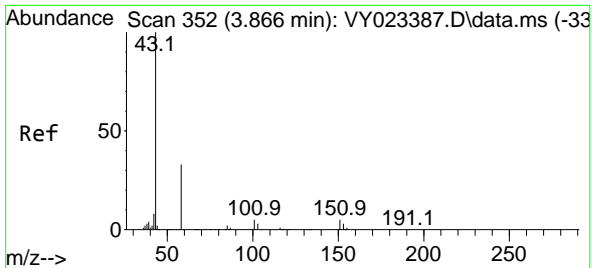
Tgt Ion:168 Resp: 559404
 Ion Ratio Lower Upper
 168 100
 99 49.2 39.7 59.5



#11
 Tert butyl alcohol
 Concen: 1.135 ug/l
 RT: 4.842 min Scan# 512
 Delta R.T. -0.018 min
 Lab File: VY023416.D
 Acq: 09 Oct 2025 12:34

Tgt Ion: 59 Resp: 395
 Ion Ratio Lower Upper
 59 100
 57 0.0 8.3 12.5#



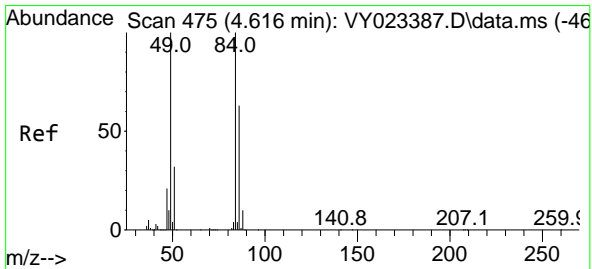
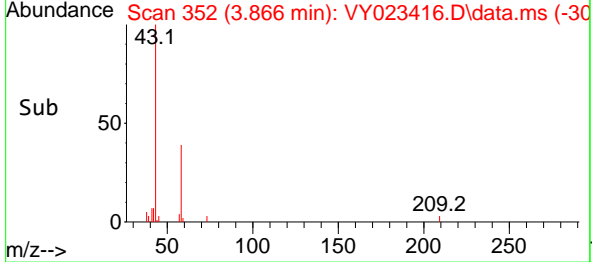
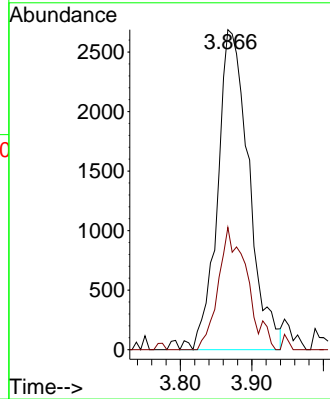
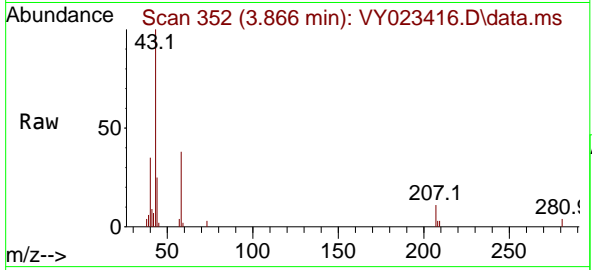


#16
 Acetone
 Concen: 7.347 ug/l
 RT: 3.866 min Scan# 31
 Delta R.T. -0.000 min
 Lab File: VY023416.D
 Acq: 09 Oct 2025 12:34

Instrument : MSVOA_Y
 ClientSampleId : SS-01-0-1

Tgt Ion: 43 Resp: 8182

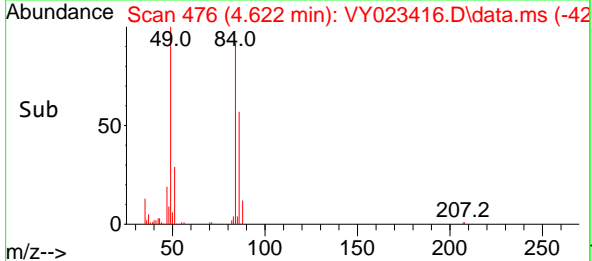
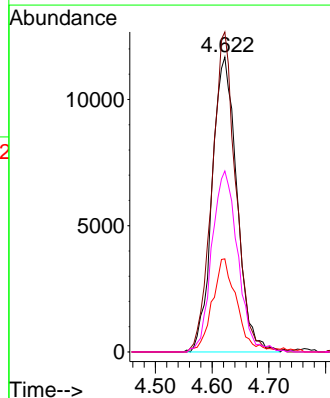
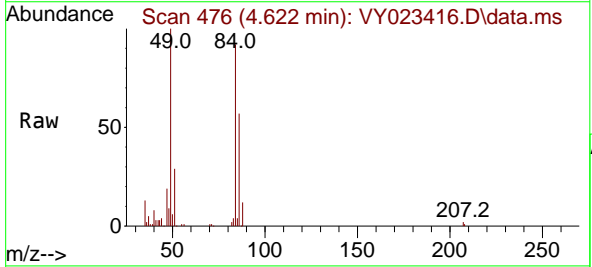
Ion	Ratio	Lower	Upper
43	100		
58	38.2	27.7	41.5

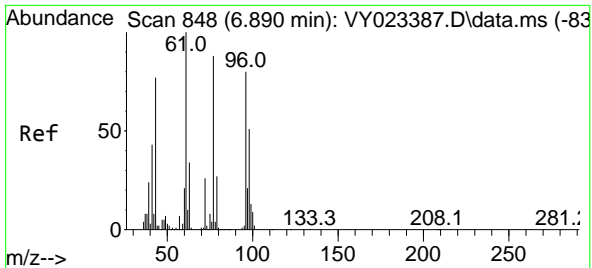


#20
 Methylene Chloride
 Concen: 5.887 ug/l
 RT: 4.622 min Scan# 476
 Delta R.T. 0.006 min
 Lab File: VY023416.D
 Acq: 09 Oct 2025 12:34

Tgt Ion: 84 Resp: 35453

Ion	Ratio	Lower	Upper
84	100		
49	108.5	80.2	120.4
51	31.6	25.9	38.9
86	61.4	50.6	75.8

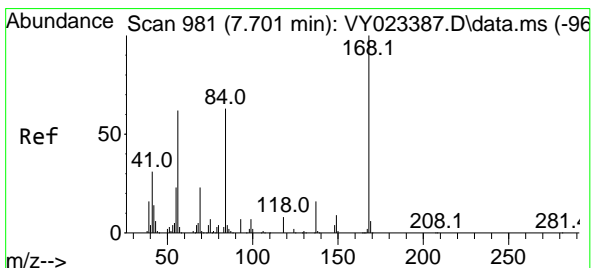
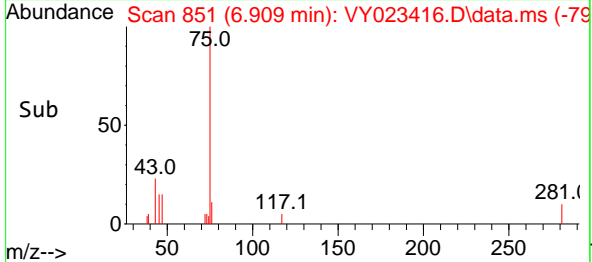
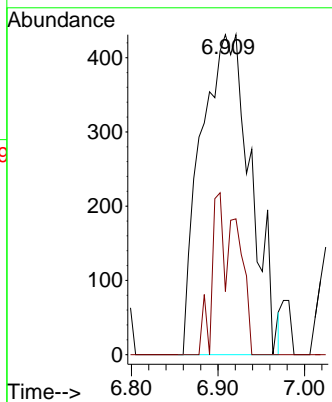
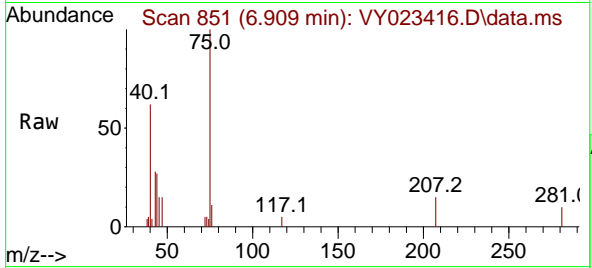




#25
 2-Butanone
 Concen: 1.260 ug/l
 RT: 6.909 min Scan# 81
 Delta R.T. 0.018 min
 Lab File: VY023416.D
 Acq: 09 Oct 2025 12:34

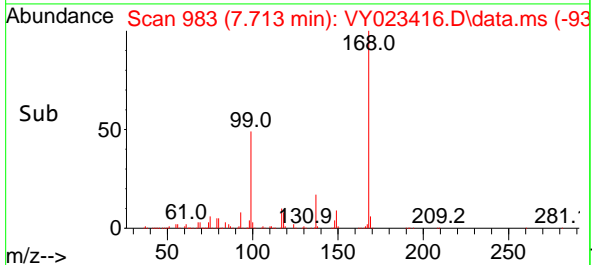
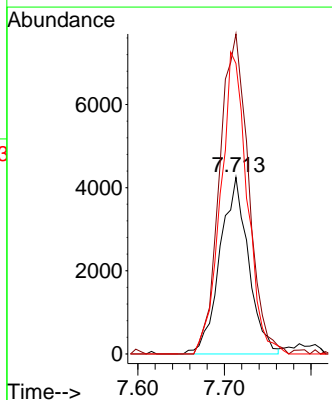
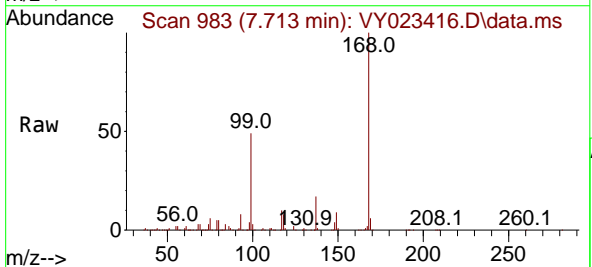
Instrument : MSVOA_Y
 ClientSampleId : SS-01-0-1

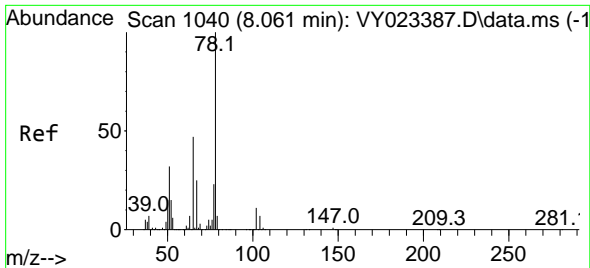
Tgt Ion: 43 Resp: 1713
 Ion Ratio Lower Upper
 43 100
 72 19.7 27.4 41.2#



#31
 Cyclohexane
 Concen: 1.246 ug/l
 RT: 7.713 min Scan# 983
 Delta R.T. 0.012 min
 Lab File: VY023416.D
 Acq: 09 Oct 2025 12:34

Tgt Ion: 56 Resp: 9697
 Ion Ratio Lower Upper
 56 100
 69 181.1 30.0 45.0#
 84 164.4 81.2 121.8#

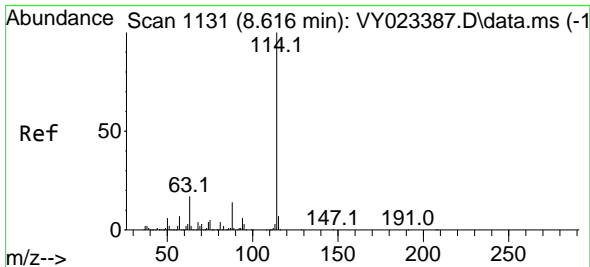
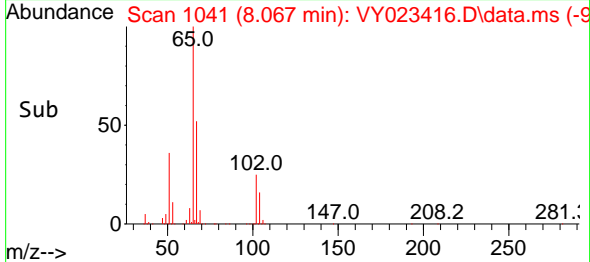
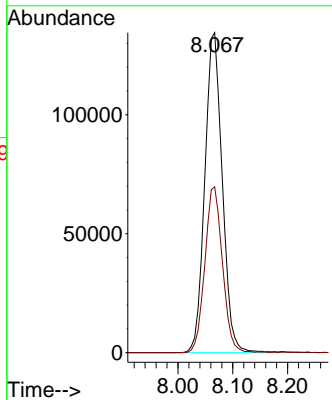
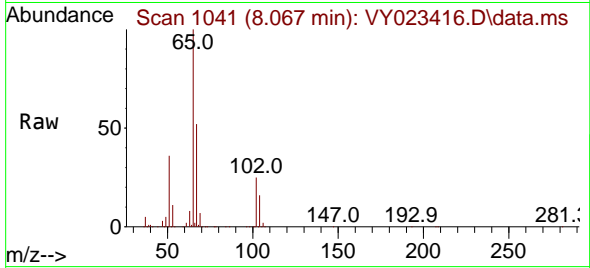




#33
 1,2-Dichloroethane-d4
 Concen: 63.535 ug/l
 RT: 8.067 min Scan# 1041
 Delta R.T. 0.006 min
 Lab File: VY023416.D
 Acq: 09 Oct 2025 12:34

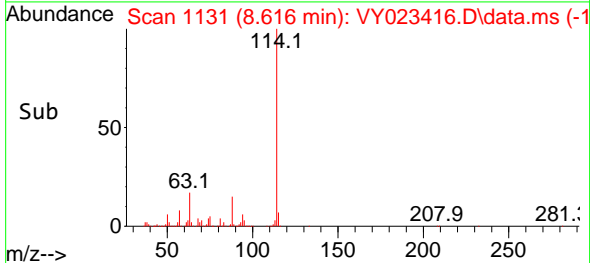
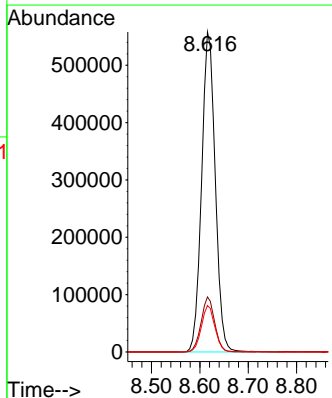
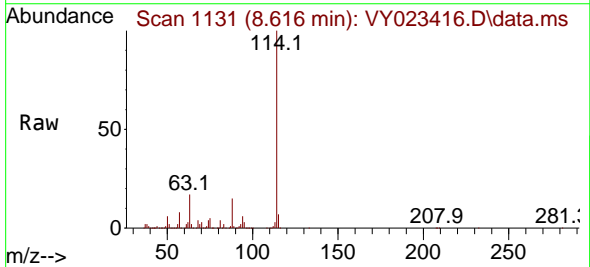
Instrument : MSVOA_Y
 ClientSampleId : SS-01-0-1

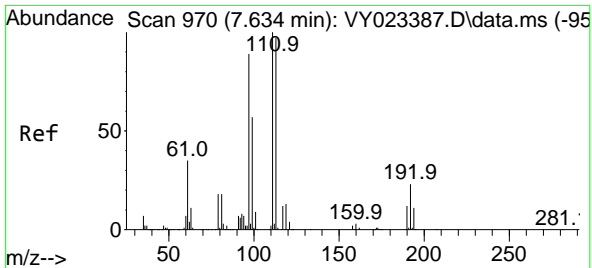
Tgt Ion: 65 Resp: 297204
 Ion Ratio Lower Upper
 65 100
 67 52.1 0.0 105.8



#34
 1,4-Difluorobenzene
 Concen: 50.000 ug/l
 RT: 8.616 min Scan# 1131
 Delta R.T. -0.000 min
 Lab File: VY023416.D
 Acq: 09 Oct 2025 12:34

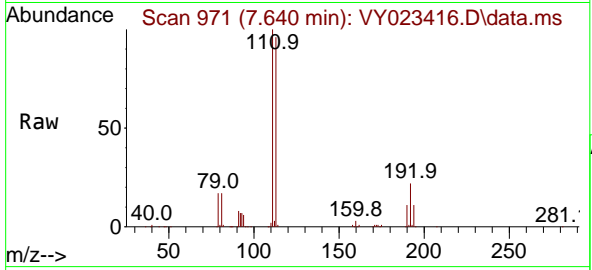
Tgt Ion:114 Resp: 1093543
 Ion Ratio Lower Upper
 114 100
 63 17.2 0.0 34.2
 88 14.5 0.0 28.4





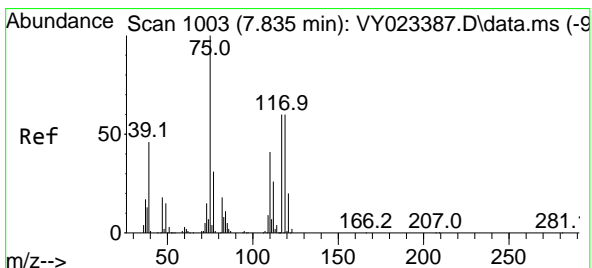
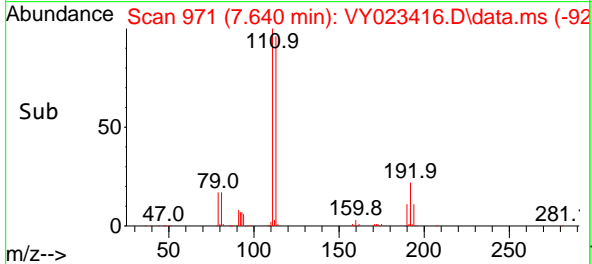
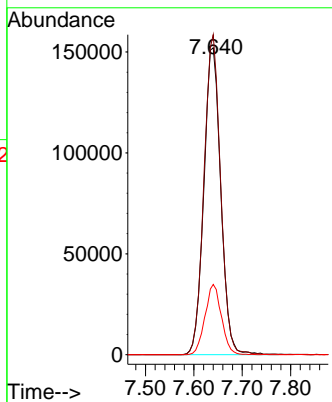
#35
 Dibromofluoromethane
 Concen: 55.241 ug/l
 RT: 7.640 min Scan# 91
 Delta R.T. 0.006 min
 Lab File: VY023416.D
 Acq: 09 Oct 2025 12:34

Instrument : MSVOA_Y
 ClientSampleId : SS-01-0-1

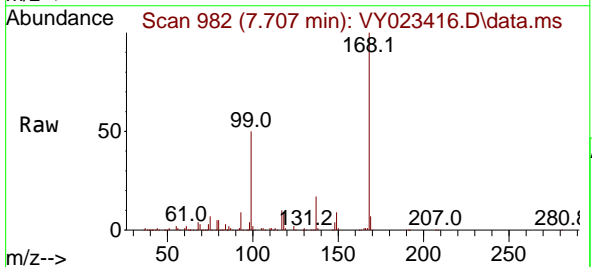


Tgt Ion: 113 Resp: 371179

Ion	Ratio	Lower	Upper
113	100		
111	101.9	81.8	122.6
192	22.1	18.0	27.0

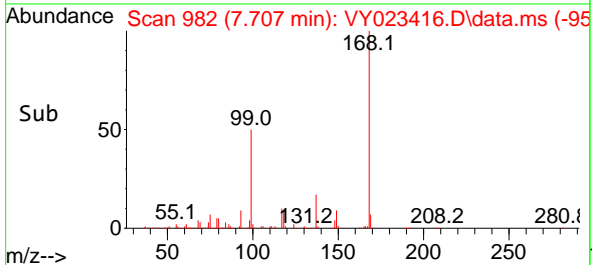
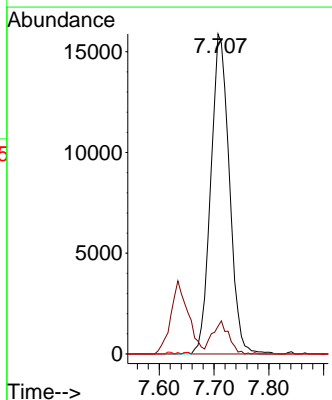


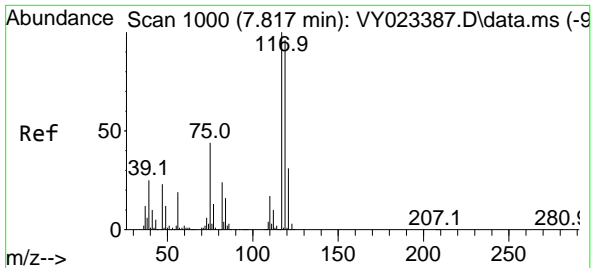
#36
 1,1-Dichloropropene
 Concen: 4.197 ug/l
 RT: 7.707 min Scan# 982
 Delta R.T. -0.128 min
 Lab File: VY023416.D
 Acq: 09 Oct 2025 12:34



Tgt Ion: 75 Resp: 37332

Ion	Ratio	Lower	Upper
75	100		
110	9.1	19.9	59.7#
77	0.0	25.0	37.6#

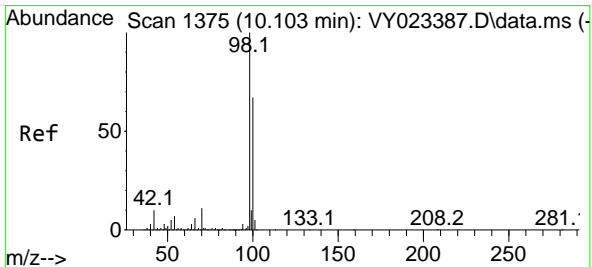
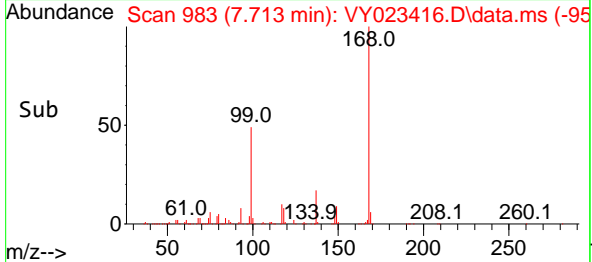
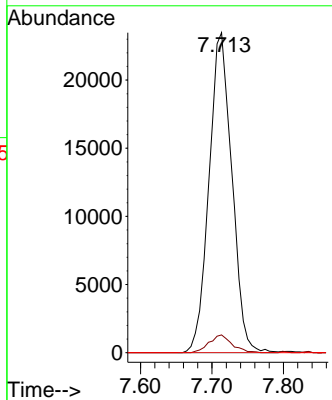
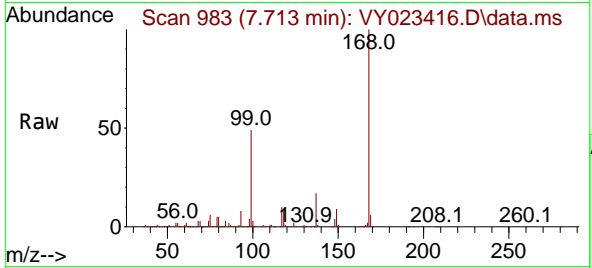




#38
 Carbon Tetrachloride
 Concen: 4.831 ug/l
 RT: 7.713 min Scan# 91
 Delta R.T. -0.104 min
 Lab File: VY023416.D
 Acq: 09 Oct 2025 12:34

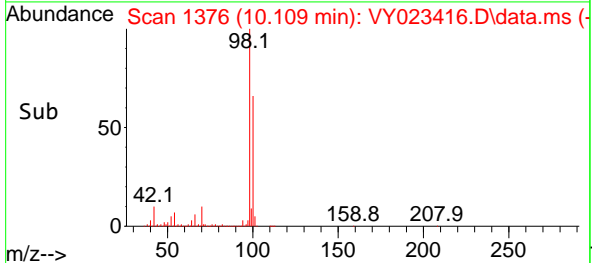
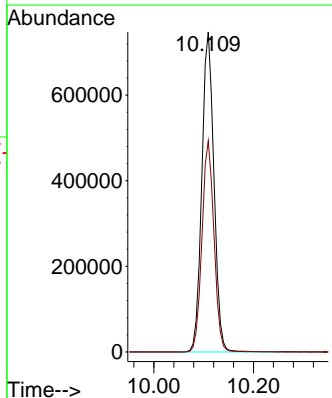
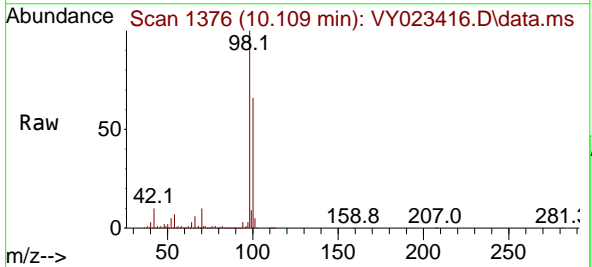
Instrument : MSVOA_Y
 ClientSampleId : SS-01-0-1

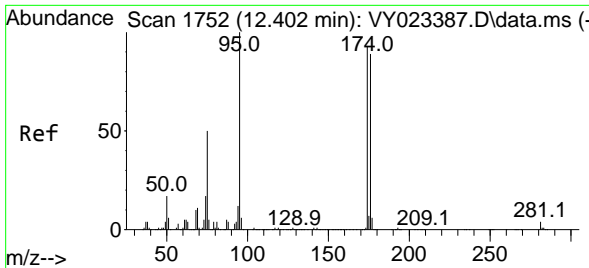
Tgt Ion:117 Resp: 52112
 Ion Ratio Lower Upper
 117 100
 119 5.6 76.8 115.2#
 121 0.0 24.5 36.7#



#50
 Toluene-d8
 Concen: 50.325 ug/l
 RT: 10.109 min Scan# 1376
 Delta R.T. 0.006 min
 Lab File: VY023416.D
 Acq: 09 Oct 2025 12:34

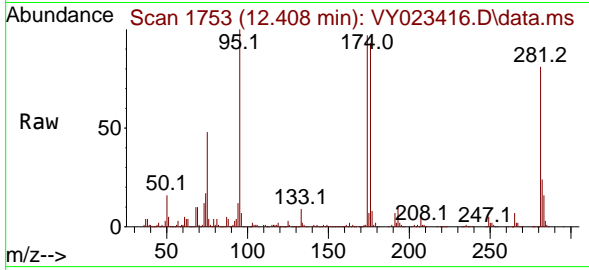
Tgt Ion: 98 Resp: 1259289
 Ion Ratio Lower Upper
 98 100
 100 65.5 53.0 79.4





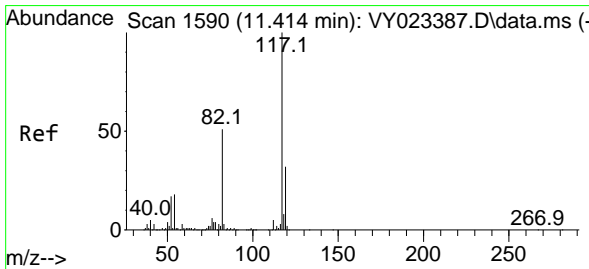
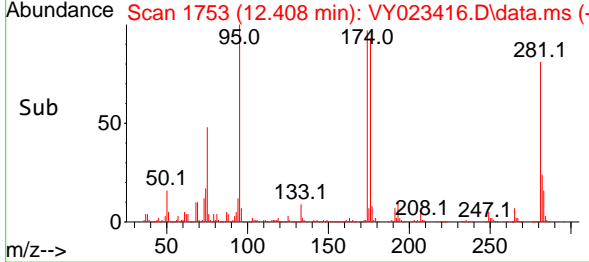
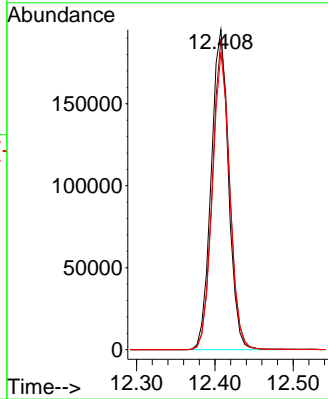
#62
 4-Bromofluorobenzene
 Concen: 36.352 ug/l
 RT: 12.408 min Scan# 1753
 Delta R.T. 0.006 min
 Lab File: VY023416.D
 Acq: 09 Oct 2025 12:34

Instrument : MSVOA_Y
 ClientSampleId : SS-01-0-1

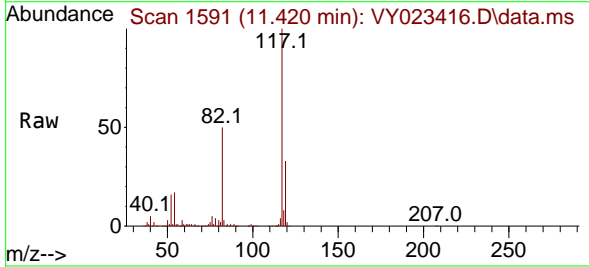


Tgt Ion: 95 Resp: 300320

Ion	Ratio	Lower	Upper
95	100		
174	96.2	0.0	192.8
176	92.5	0.0	187.6

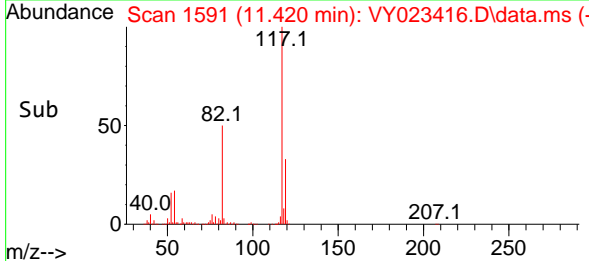
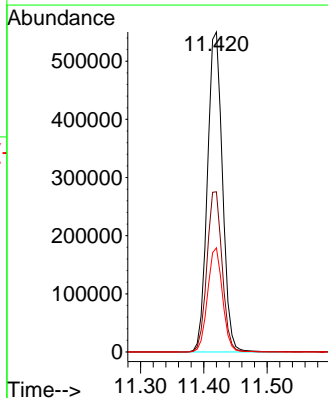


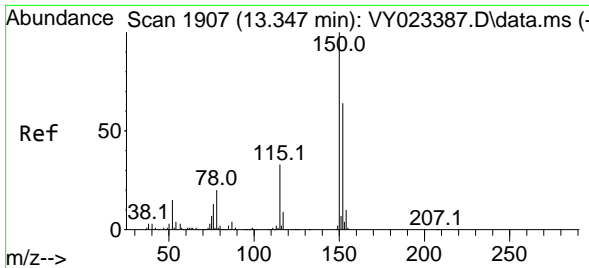
#63
 Chlorobenzene-d5
 Concen: 50.000 ug/l
 RT: 11.420 min Scan# 1591
 Delta R.T. 0.006 min
 Lab File: VY023416.D
 Acq: 09 Oct 2025 12:34



Tgt Ion: 117 Resp: 911689

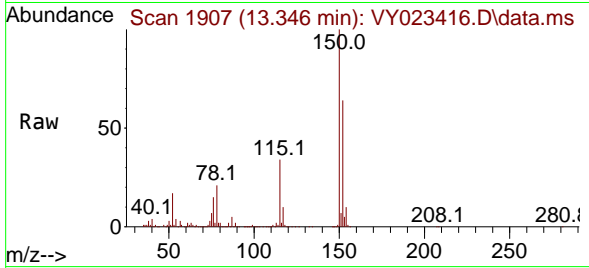
Ion	Ratio	Lower	Upper
117	100		
82	50.1	41.0	61.4
119	32.6	25.6	38.4



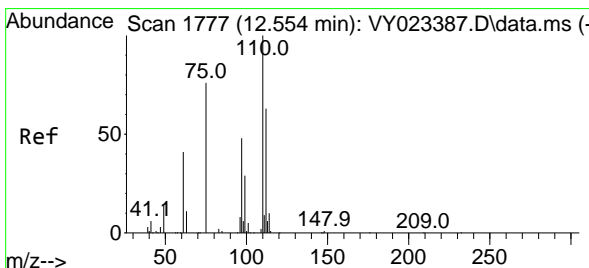
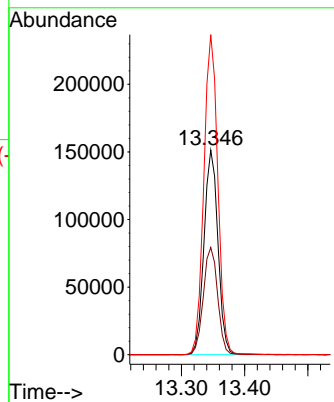
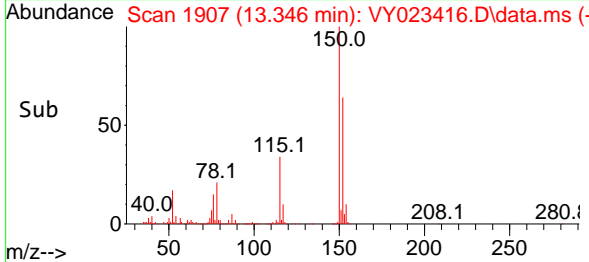


#72
 1,4-Dichlorobenzene-d4
 Concen: 50.000 ug/l
 RT: 13.346 min Scan# 1753
 Delta R.T. -0.000 min
 Lab File: VY023416.D
 Acq: 09 Oct 2025 12:34

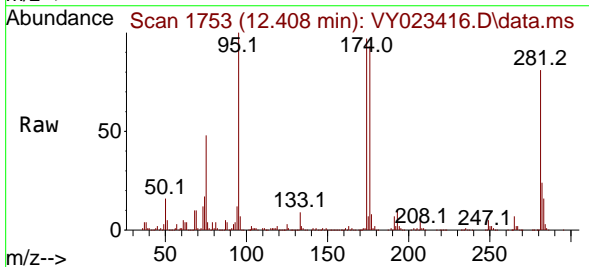
Instrument : MSVOA_Y
 ClientSampleId : SS-01-0-1



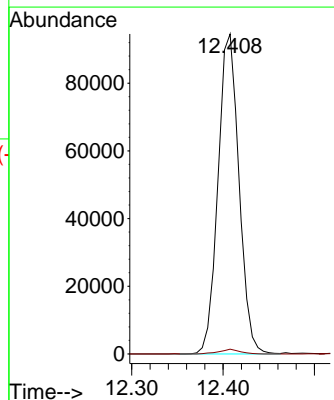
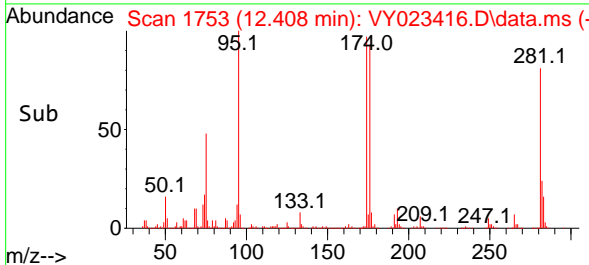
Tgt Ion:152 Resp: 232592
 Ion Ratio Lower Upper
 152 100
 115 53.7 27.1 81.2
 150 156.6 0.0 347.4

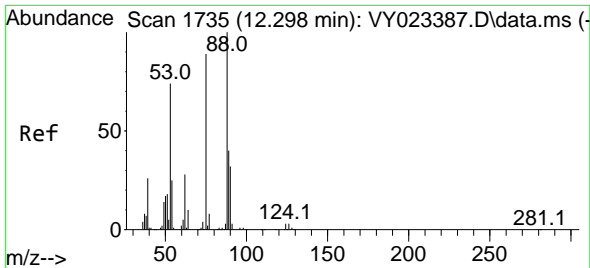


#76
 1,2,3-Trichloropropane
 Concen: 73.567 ug/l
 RT: 12.408 min Scan# 1753
 Delta R.T. -0.146 min
 Lab File: VY023416.D
 Acq: 09 Oct 2025 12:34



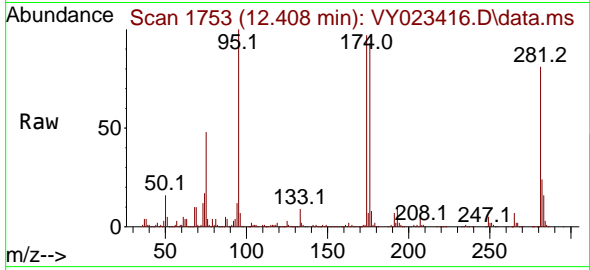
Tgt Ion: 75 Resp: 150965
 Ion Ratio Lower Upper
 75 100
 77 1.5 0.0 0.0#





#81
 trans-1,4-Dichloro-2-butene
 Concen: 180.400 ug/l
 RT: 12.408 min Scan# 1
 Delta R.T. 0.110 min
 Lab File: VY023416.D
 Acq: 09 Oct 2025 12:34

Instrument :
 MSVOA_Y
 ClientSampleId :
 SS-01-0-1



Tgt Ion: 75 Resp: 150965

Ion	Ratio	Lower	Upper
75	100		
53	0.2	68.6	102.8#
89	1.1	39.0	58.4#

