

Data Path : Z:\voasrv\HPCHEM1\MSVOA_Y\Data\VY100925\
 Data File : VY023417.D
 Acq On : 09 Oct 2025 12:57
 Operator : SY/MD
 Sample : Q3310-02
 Misc : 7.82g/5.0mL/MSVOA_Y/SOIL/A
 ALS Vial : 12 Sample Multiplier: 1

Instrument :
 MSVOA_Y
 ClientSampleId :
 SS-01-1-2

Quant Time: Oct 10 04:25:49 2025
 Quant Method : Z:\voasrv\HPCHEM1\MSVOA_Y\methods\82Y100725S.M
 Quant Title : SW846 8260
 QLast Update : Wed Oct 08 05:12:50 2025
 Response via : Initial Calibration

Compound	R.T.	QIon	Response	Conc	Units	Dev(Min)

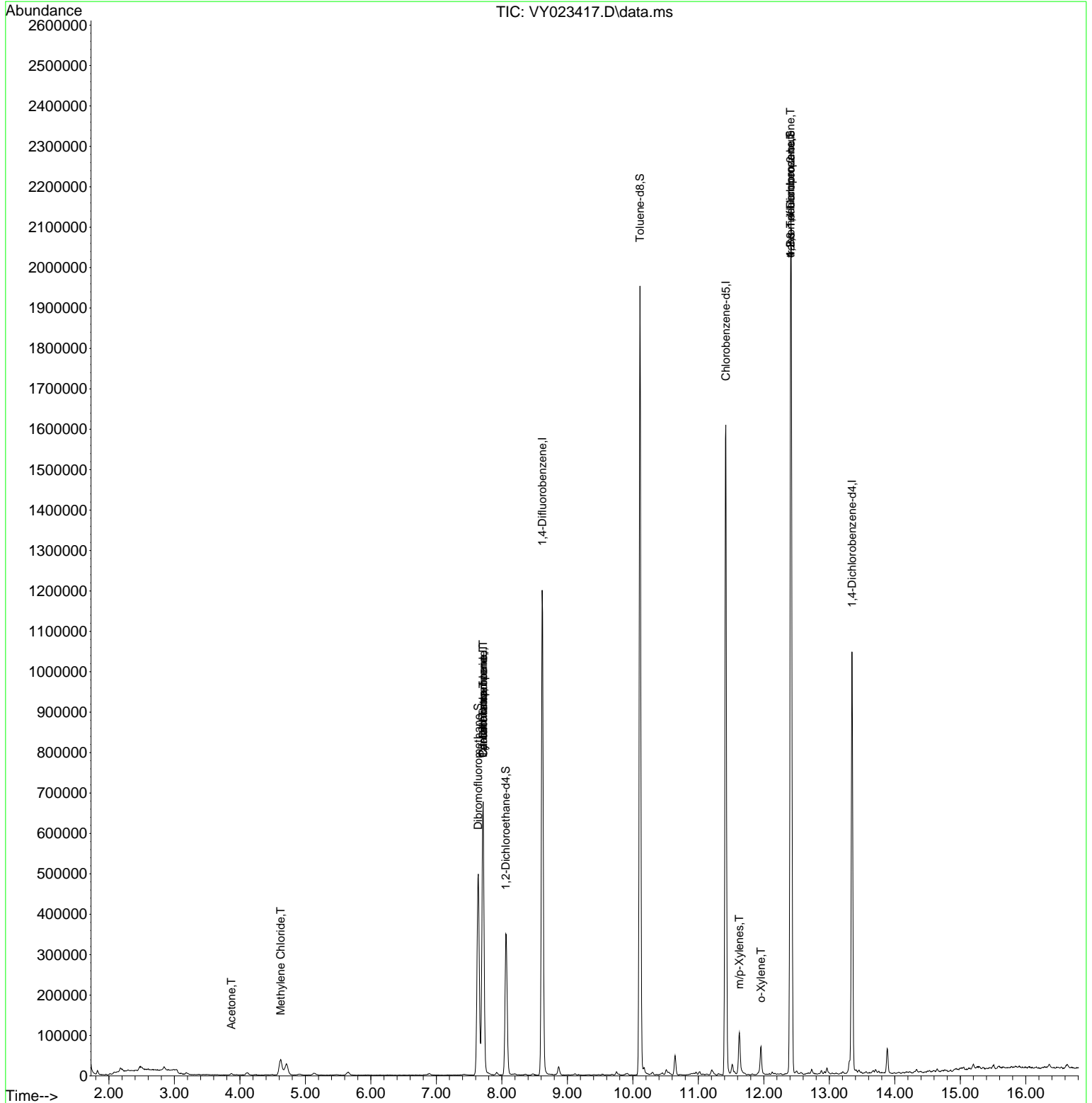
Internal Standards						
1) Pentafluorobenzene	7.713	168	558033	50.000	ug/l	0.00
34) 1,4-Difluorobenzene	8.616	114	1087217	50.000	ug/l	0.00
63) Chlorobenzene-d5	11.420	117	940588	50.000	ug/l	0.00
72) 1,4-Dichlorobenzene-d4	13.346	152	284438	50.000	ug/l	0.00
System Monitoring Compounds						
33) 1,2-Dichloroethane-d4	8.061	65	280666	60.147	ug/l	0.00
Spiked Amount	50.000	Range	50 - 163	Recovery	=	120.300%
35) Dibromofluoromethane	7.640	113	356956	53.433	ug/l	0.00
Spiked Amount	50.000	Range	54 - 147	Recovery	=	106.860%
50) Toluene-d8	10.109	98	1274127	51.214	ug/l	0.00
Spiked Amount	50.000	Range	58 - 134	Recovery	=	102.420%
62) 4-Bromofluorobenzene	12.408	95	332896	40.530	ug/l	0.00
Spiked Amount	50.000	Range	30 - 143	Recovery	=	81.060%
Target Compounds						
					Qvalue	
16) Acetone	3.873	43	4589	4.131	ug/l #	84
20) Methylene Chloride	4.622	84	30371	5.056	ug/l	98
31) Cyclohexane	7.713	56	10533	1.357	ug/l #	2
36) 1,1-Dichloropropene	7.713	75	36498	4.127	ug/l #	48
38) Carbon Tetrachloride	7.713	117	51617	4.813	ug/l #	16
68) m/p-Xylenes	11.627	106	31551	2.375	ug/l	99
69) o-Xylene	11.956	106	19301	1.549	ug/l	99
76) 1,2,3-Trichloropropane	12.408	75	172386	68.693	ug/l #	100
81) trans-1,4-Dichloro-2-b...	12.408	75	172386	168.449	ug/l #	15

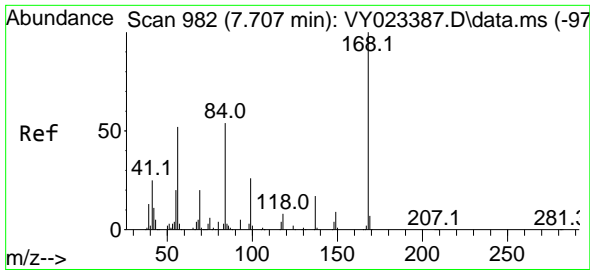
(#) = qualifier out of range (m) = manual integration (+) = signals summed

Data Path : Z:\voasrv\HPCHEM1\MSVOA_Y\Data\VY100925\
 Data File : VY023417.D
 Acq On : 09 Oct 2025 12:57
 Operator : SY/MD
 Sample : Q3310-02
 Misc : 7.82g/5.0mL/MSVOA_Y/SOIL/A
 ALS Vial : 12 Sample Multiplier: 1

Instrument :
 MSVOA_Y
ClientSampleId :
 SS-01-1-2

Quant Time: Oct 10 04:25:49 2025
 Quant Method : Z:\voasrv\HPCHEM1\MSVOA_Y\methods\82Y100725S.M
 Quant Title : SW846 8260
 QLast Update : Wed Oct 08 05:12:50 2025
 Response via : Initial Calibration

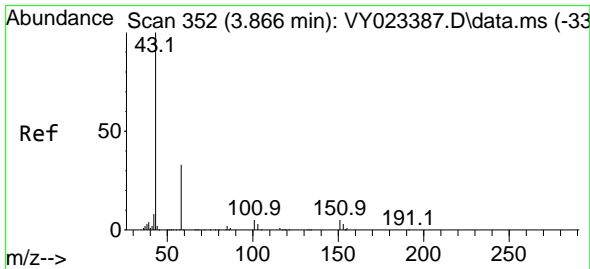
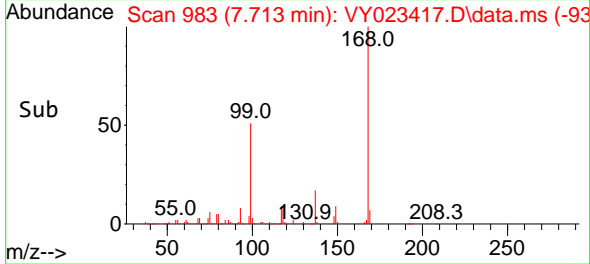
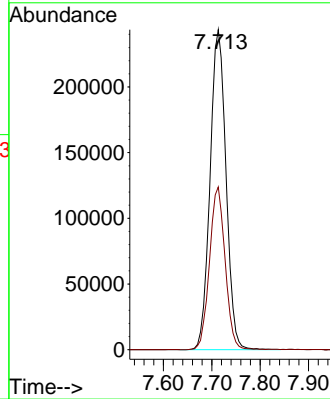
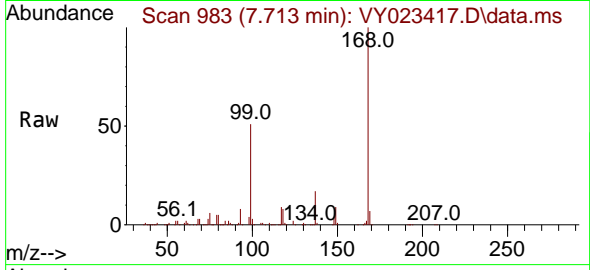




#1
 Pentafluorobenzene
 Concen: 50.000 ug/l
 RT: 7.713 min Scan# 91
 Delta R.T. 0.006 min
 Lab File: VY023417.D
 Acq: 09 Oct 2025 12:57

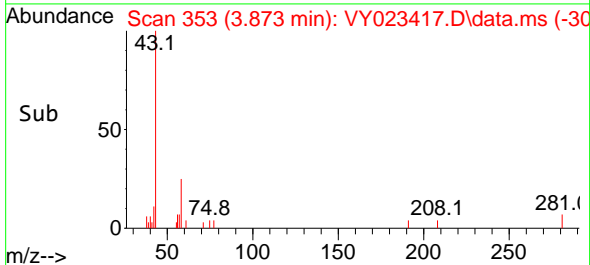
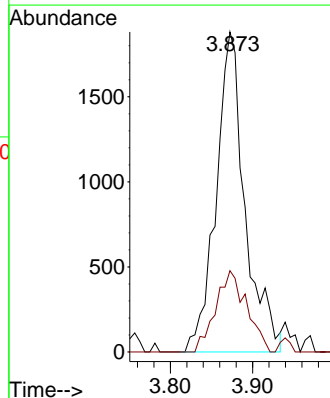
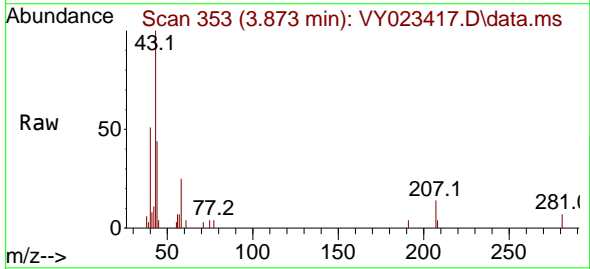
Instrument :
 MSVOA_Y
 ClientSampleId :
 SS-01-1-2

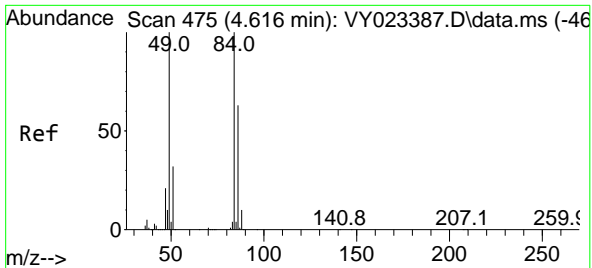
Tgt Ion:168 Resp: 558033
 Ion Ratio Lower Upper
 168 100
 99 50.8 39.7 59.5



#16
 Acetone
 Concen: 4.131 ug/l
 RT: 3.873 min Scan# 353
 Delta R.T. 0.006 min
 Lab File: VY023417.D
 Acq: 09 Oct 2025 12:57

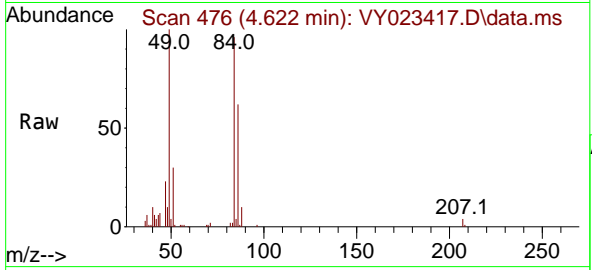
Tgt Ion: 43 Resp: 4589
 Ion Ratio Lower Upper
 43 100
 58 25.4 27.7 41.5#





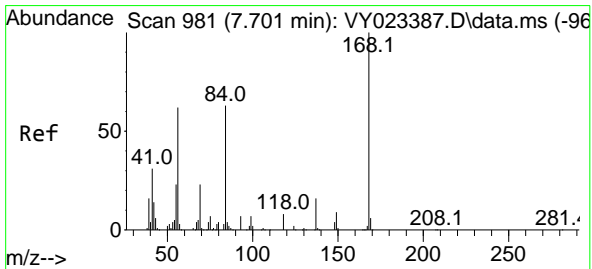
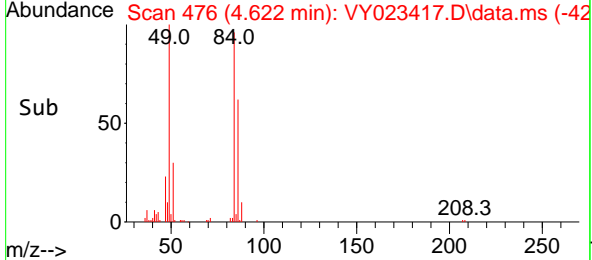
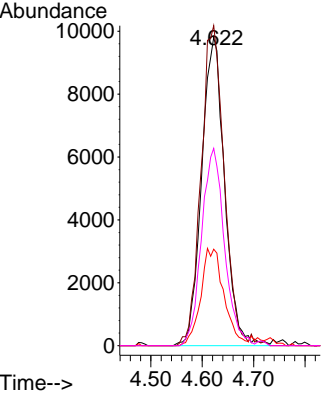
#20
 Methylene Chloride
 Concen: 5.056 ug/l
 RT: 4.622 min Scan# 41
 Delta R.T. 0.006 min
 Lab File: VY023417.D
 Acq: 09 Oct 2025 12:57

Instrument : MSVOA_Y
 ClientSampleId : SS-01-1-2

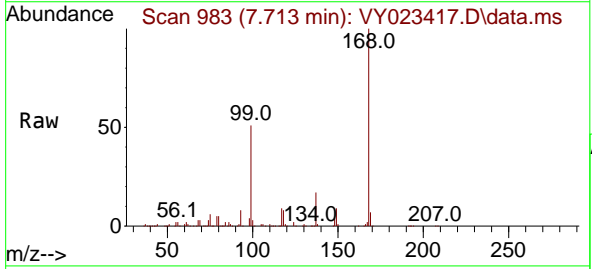


Tgt Ion: 84 Resp: 30371

Ion	Ratio	Lower	Upper
84	100		
49	103.8	80.2	120.4
51	31.3	25.9	38.9
86	64.0	50.6	75.8

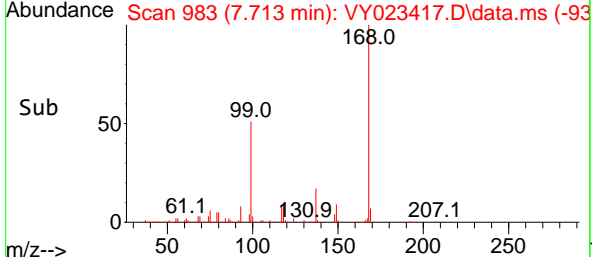
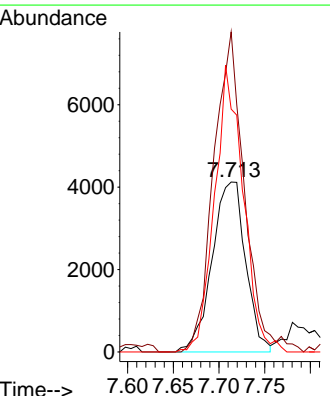


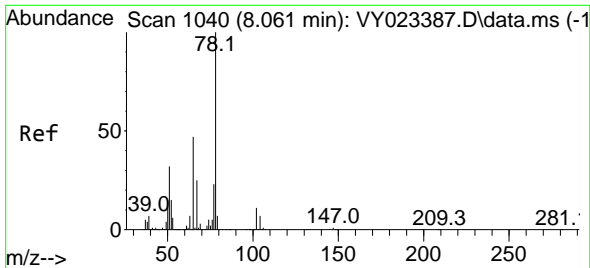
#31
 Cyclohexane
 Concen: 1.357 ug/l
 RT: 7.713 min Scan# 983
 Delta R.T. 0.012 min
 Lab File: VY023417.D
 Acq: 09 Oct 2025 12:57



Tgt Ion: 56 Resp: 10533

Ion	Ratio	Lower	Upper
56	100		
69	188.4	30.0	45.0#
84	142.9	81.2	121.8#

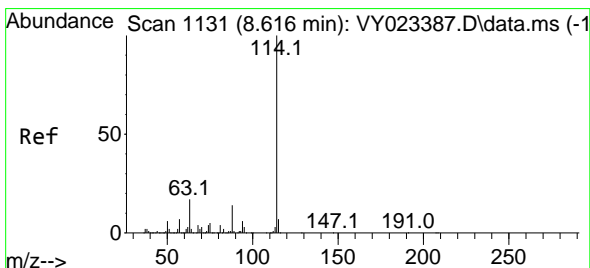
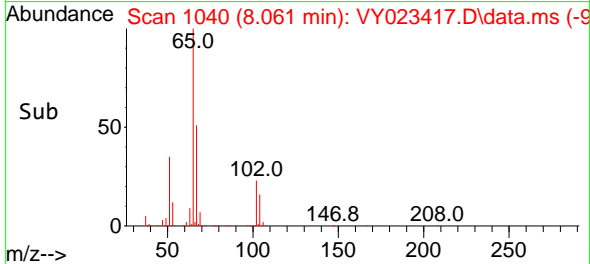
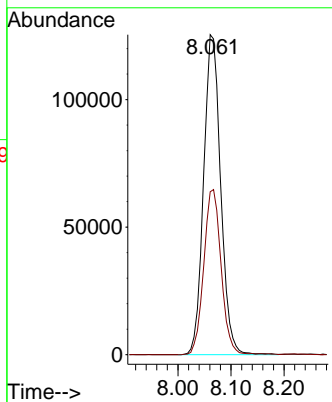
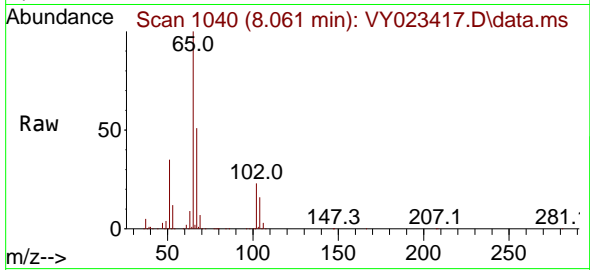




#33
 1,2-Dichloroethane-d4
 Concen: 60.147 ug/l
 RT: 8.061 min Scan# 1040
 Delta R.T. -0.000 min
 Lab File: VY023417.D
 Acq: 09 Oct 2025 12:57

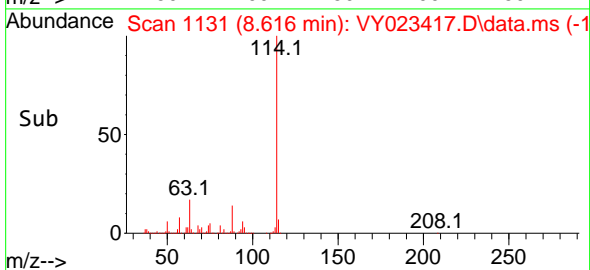
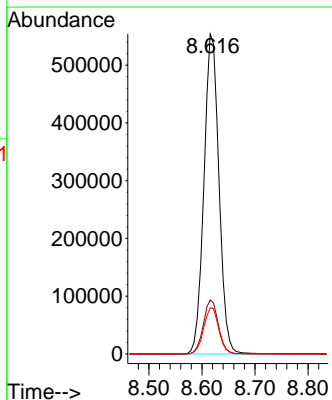
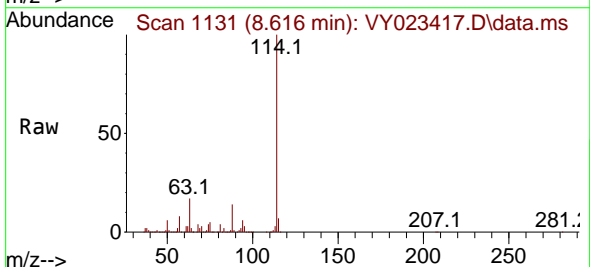
Instrument : MSVOA_Y
 ClientSampleId : SS-01-1-2

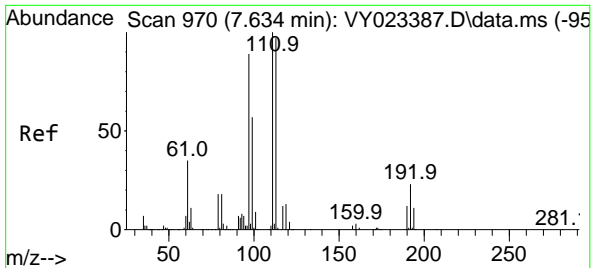
Tgt Ion: 65 Resp: 280666
 Ion Ratio Lower Upper
 65 100
 67 52.3 0.0 105.8



#34
 1,4-Difluorobenzene
 Concen: 50.000 ug/l
 RT: 8.616 min Scan# 1131
 Delta R.T. -0.000 min
 Lab File: VY023417.D
 Acq: 09 Oct 2025 12:57

Tgt Ion:114 Resp: 1087217
 Ion Ratio Lower Upper
 114 100
 63 16.9 0.0 34.2
 88 14.5 0.0 28.4



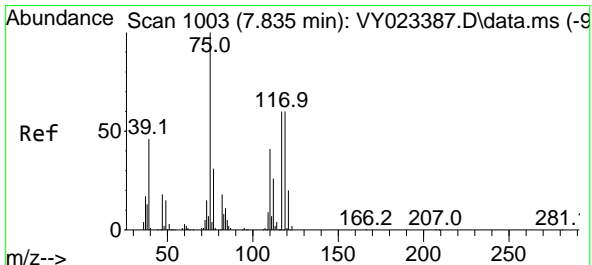
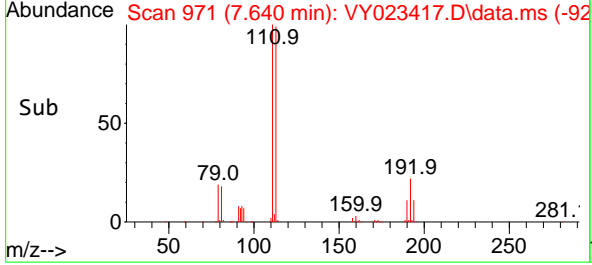
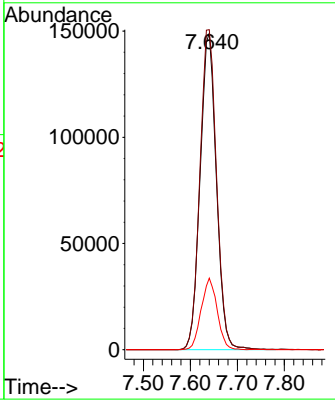
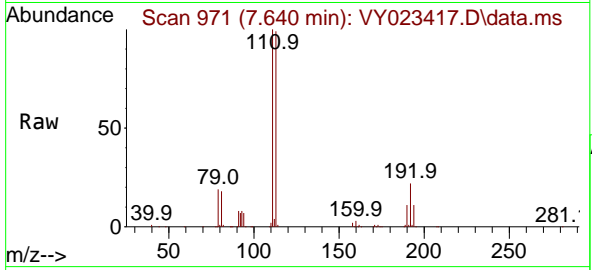


#35
 Dibromofluoromethane
 Concen: 53.433 ug/l
 RT: 7.640 min Scan# 91
 Delta R.T. 0.006 min
 Lab File: VY023417.D
 Acq: 09 Oct 2025 12:57

Instrument : MSVOA_Y
 ClientSampleId : SS-01-1-2

Tgt Ion:113 Resp: 356956

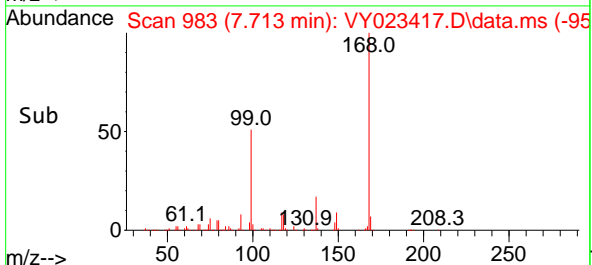
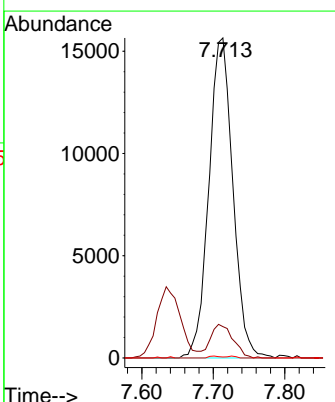
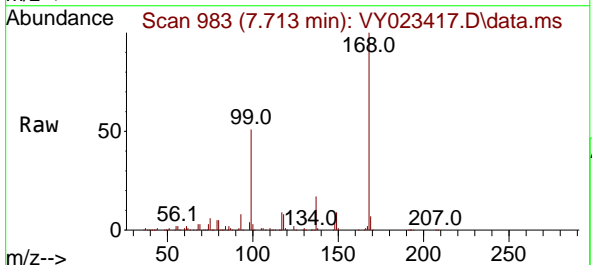
Ion	Ratio	Lower	Upper
113	100		
111	103.8	81.8	122.6
192	22.2	18.0	27.0

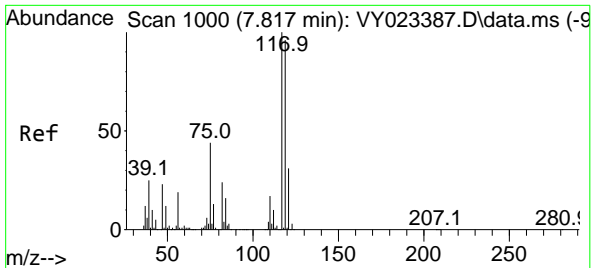


#36
 1,1-Dichloropropene
 Concen: 4.127 ug/l
 RT: 7.713 min Scan# 983
 Delta R.T. -0.122 min
 Lab File: VY023417.D
 Acq: 09 Oct 2025 12:57

Tgt Ion: 75 Resp: 36498

Ion	Ratio	Lower	Upper
75	100		
110	9.8	19.9	59.7#
77	0.3	25.0	37.6#

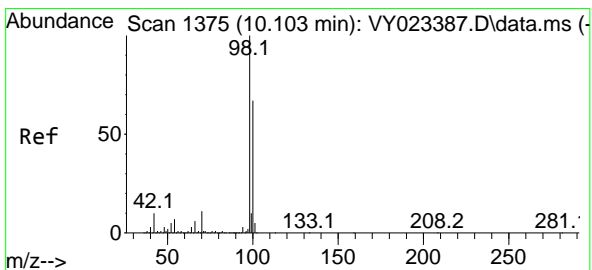
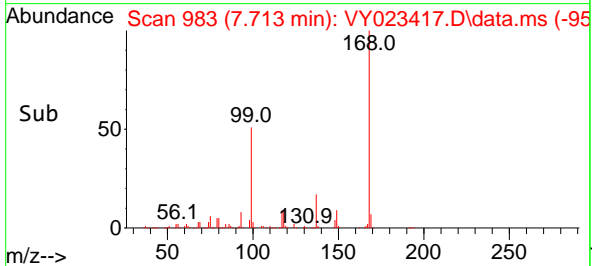
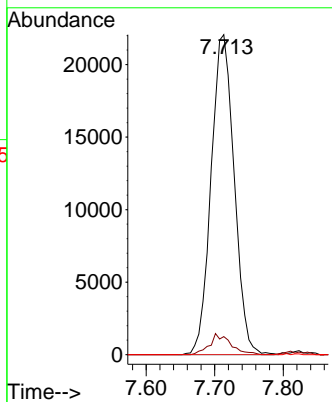
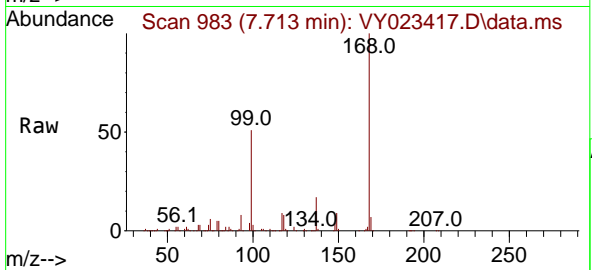




#38
 Carbon Tetrachloride
 Concen: 4.813 ug/l
 RT: 7.713 min Scan# 91
 Delta R.T. -0.104 min
 Lab File: VY023417.D
 Acq: 09 Oct 2025 12:57

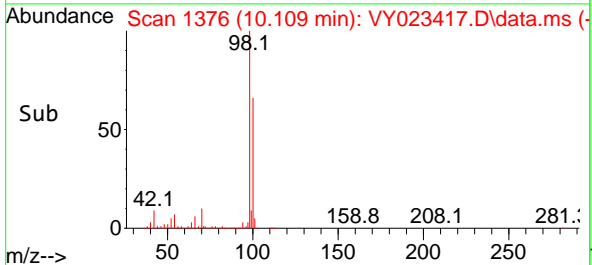
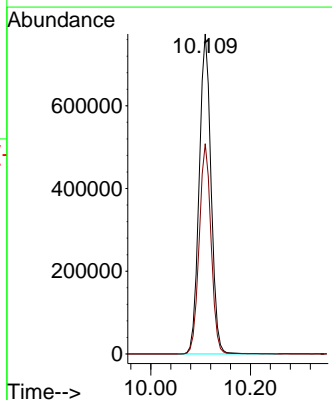
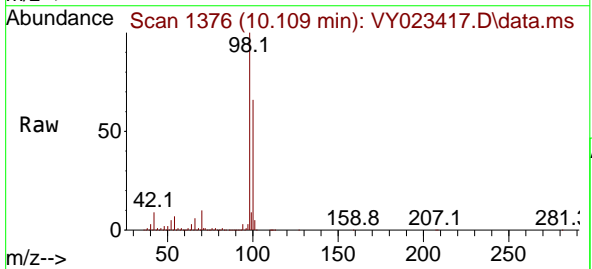
Instrument : MSVOA_Y
 ClientSampleId : SS-01-1-2

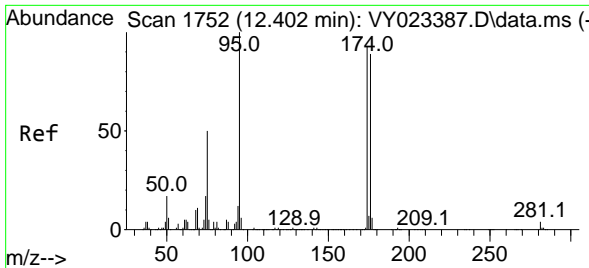
Tgt Ion:117 Resp: 51617
 Ion Ratio Lower Upper
 117 100
 119 5.7 76.8 115.2#
 121 0.0 24.5 36.7#



#50
 Toluene-d8
 Concen: 51.214 ug/l
 RT: 10.109 min Scan# 1376
 Delta R.T. 0.006 min
 Lab File: VY023417.D
 Acq: 09 Oct 2025 12:57

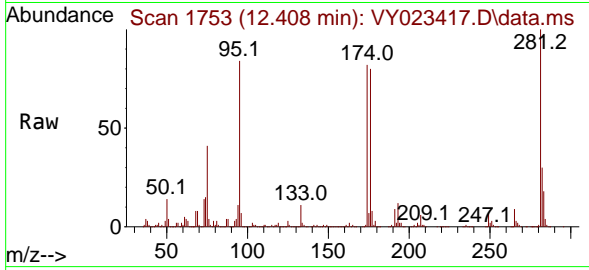
Tgt Ion: 98 Resp: 1274127
 Ion Ratio Lower Upper
 98 100
 100 65.5 53.0 79.4





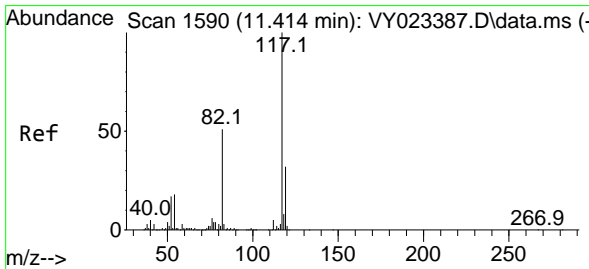
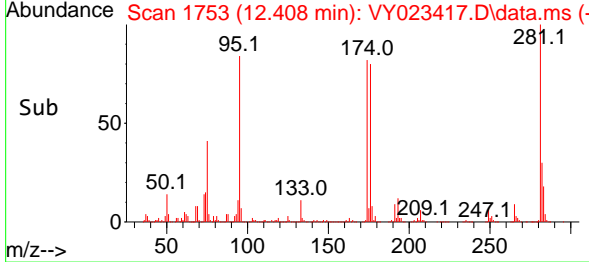
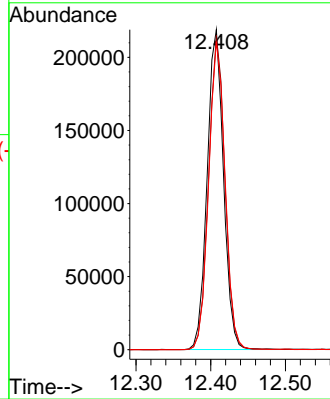
#62
 4-Bromofluorobenzene
 Concen: 40.530 ug/l
 RT: 12.408 min Scan# 1753
 Delta R.T. 0.006 min
 Lab File: VY023417.D
 Acq: 09 Oct 2025 12:57

Instrument : MSVOA_Y
 ClientSampleId : SS-01-1-2

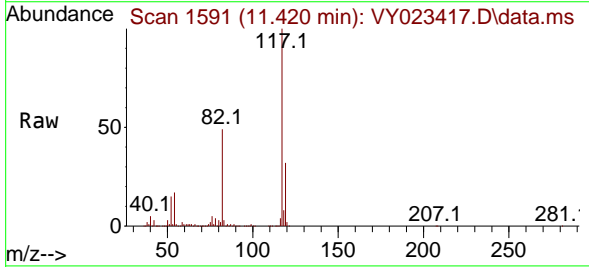


Tgt Ion: 95 Resp: 332896

Ion	Ratio	Lower	Upper
95	100		
174	97.7	0.0	192.8
176	96.7	0.0	187.6

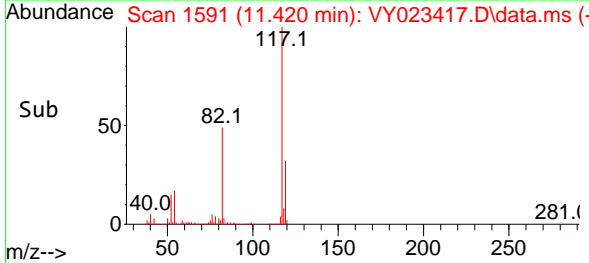
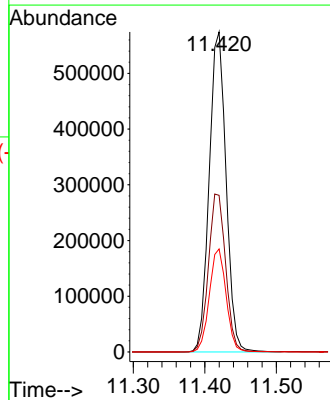


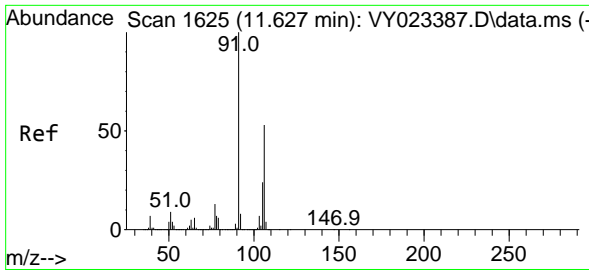
#63
 Chlorobenzene-d5
 Concen: 50.000 ug/l
 RT: 11.420 min Scan# 1591
 Delta R.T. 0.006 min
 Lab File: VY023417.D
 Acq: 09 Oct 2025 12:57



Tgt Ion: 117 Resp: 940588

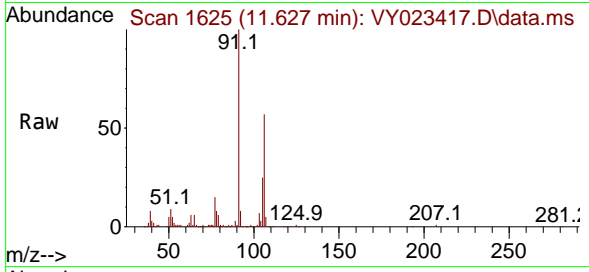
Ion	Ratio	Lower	Upper
117	100		
82	48.9	41.0	61.4
119	32.2	25.6	38.4



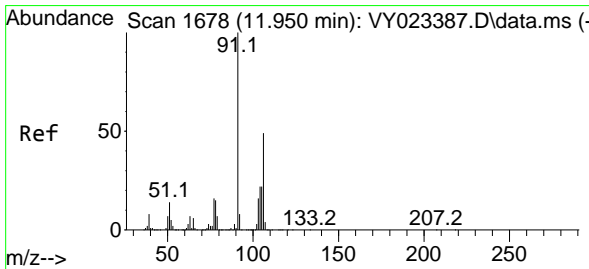
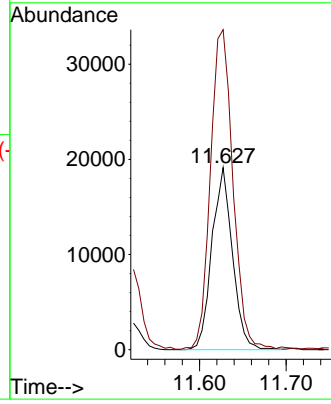
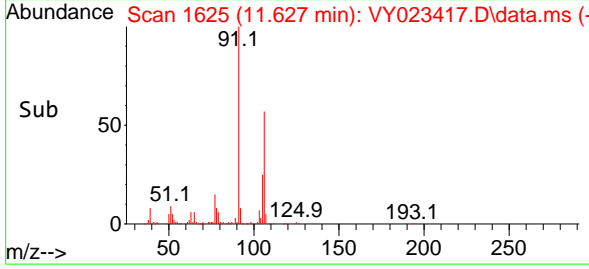


#68
 m/p-Xylenes
 Concen: 2.375 ug/l
 RT: 11.627 min Scan# 1625
 Delta R.T. -0.000 min
 Lab File: VY023417.D
 Acq: 09 Oct 2025 12:57

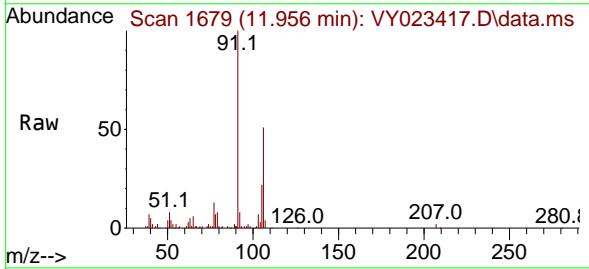
Instrument : MSVOA_Y
 ClientSampleId : SS-01-1-2



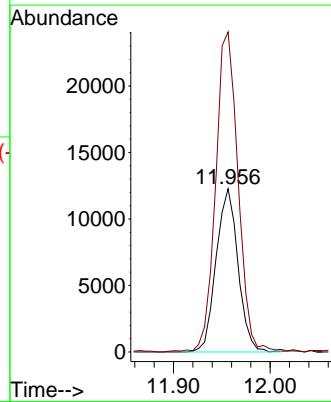
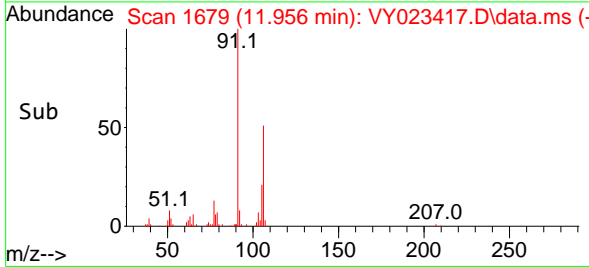
Tgt Ion:106 Resp: 31551
 Ion Ratio Lower Upper
 106 100
 91 191.6 152.6 229.0

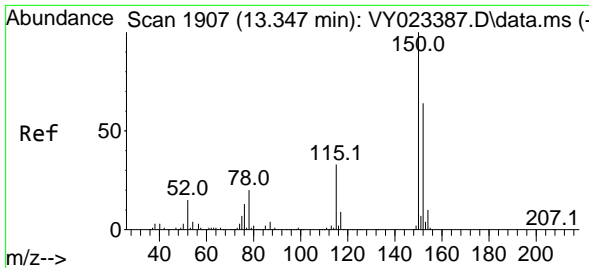


#69
 o-Xylene
 Concen: 1.549 ug/l
 RT: 11.956 min Scan# 1679
 Delta R.T. 0.006 min
 Lab File: VY023417.D
 Acq: 09 Oct 2025 12:57



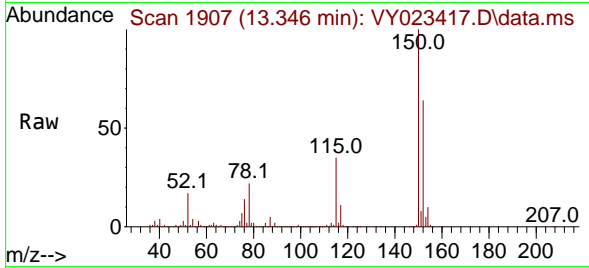
Tgt Ion:106 Resp: 19301
 Ion Ratio Lower Upper
 106 100
 91 201.5 101.4 304.1



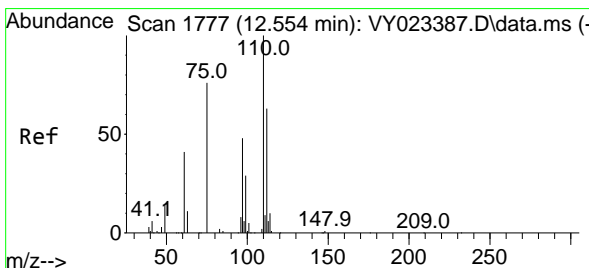
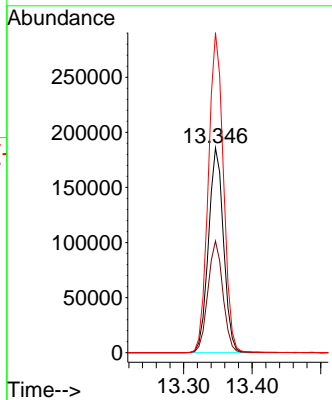
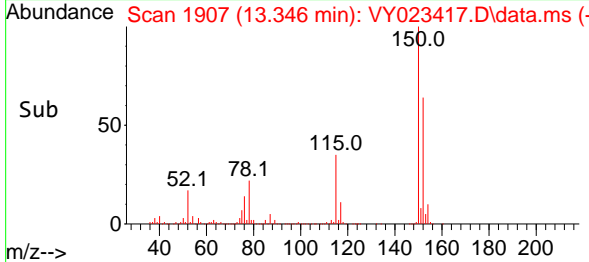


#72
 1,4-Dichlorobenzene-d4
 Concen: 50.000 ug/l
 RT: 13.346 min Scan# 1753
 Delta R.T. -0.000 min
 Lab File: VY023417.D
 Acq: 09 Oct 2025 12:57

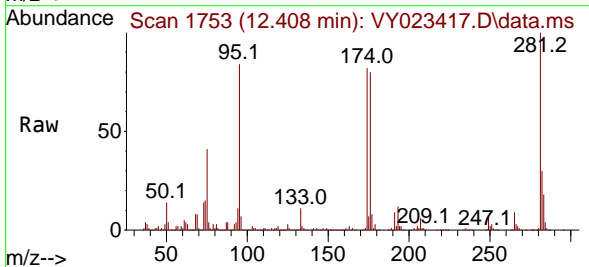
Instrument : MSVOA_Y
 ClientSampleId : SS-01-1-2



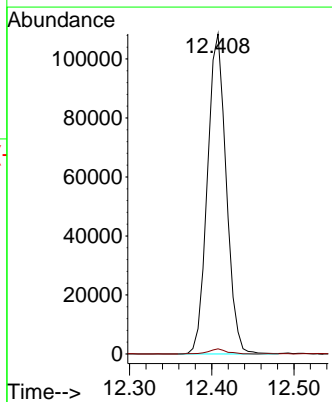
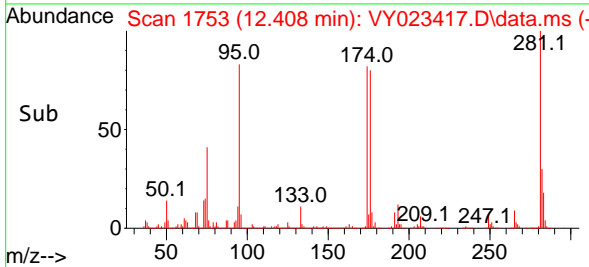
Tgt Ion:152 Resp: 284438
 Ion Ratio Lower Upper
 152 100
 115 54.5 27.1 81.2
 150 156.5 0.0 347.4

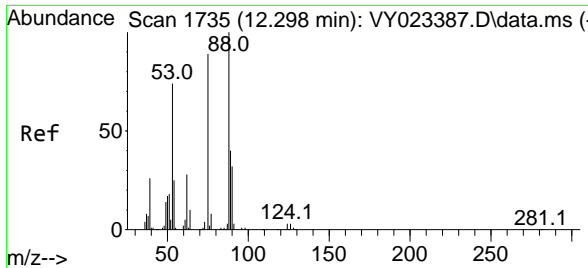


#76
 1,2,3-Trichloropropane
 Concen: 68.693 ug/l
 RT: 12.408 min Scan# 1753
 Delta R.T. -0.146 min
 Lab File: VY023417.D
 Acq: 09 Oct 2025 12:57



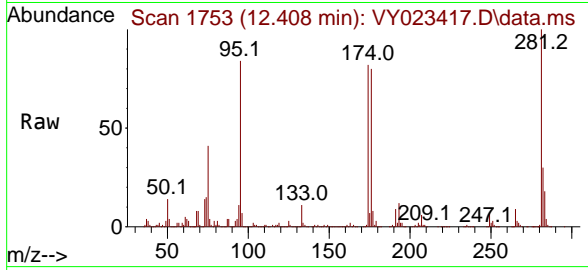
Tgt Ion: 75 Resp: 172386
 Ion Ratio Lower Upper
 75 100
 77 1.6 0.0 0.0#





#81
 trans-1,4-Dichloro-2-butene
 Concen: 168.449 ug/l
 RT: 12.408 min Scan# 1
 Delta R.T. 0.110 min
 Lab File: VY023417.D
 Acq: 09 Oct 2025 12:57

Instrument :
 MSVOA_Y
 ClientSampleId :
 SS-01-1-2



Tgt Ion: 75 Resp: 172386

Ion	Ratio	Lower	Upper
75	100		
53	0.1	68.6	102.8#
89	1.7	39.0	58.4#

