

Data Path : Z:\voasrv\HPCHEM1\MSVOA_Y\Data\VY100925\
 Data File : VY023419.D
 Acq On : 09 Oct 2025 13:44
 Operator : SY/MD
 Sample : Q3321-01
 Misc : 5.60g/5.0mL/MSVOA_Y/SOIL/A
 ALS Vial : 14 Sample Multiplier: 1

Instrument :
 MSVOA_Y
ClientSampleId :
 P001-DS-01

Quant Time: Oct 10 04:26:36 2025
 Quant Method : Z:\voasrv\HPCHEM1\MSVOA_Y\methods\82Y100725S.M
 Quant Title : SW846 8260
 QLast Update : Wed Oct 08 05:12:50 2025
 Response via : Initial Calibration

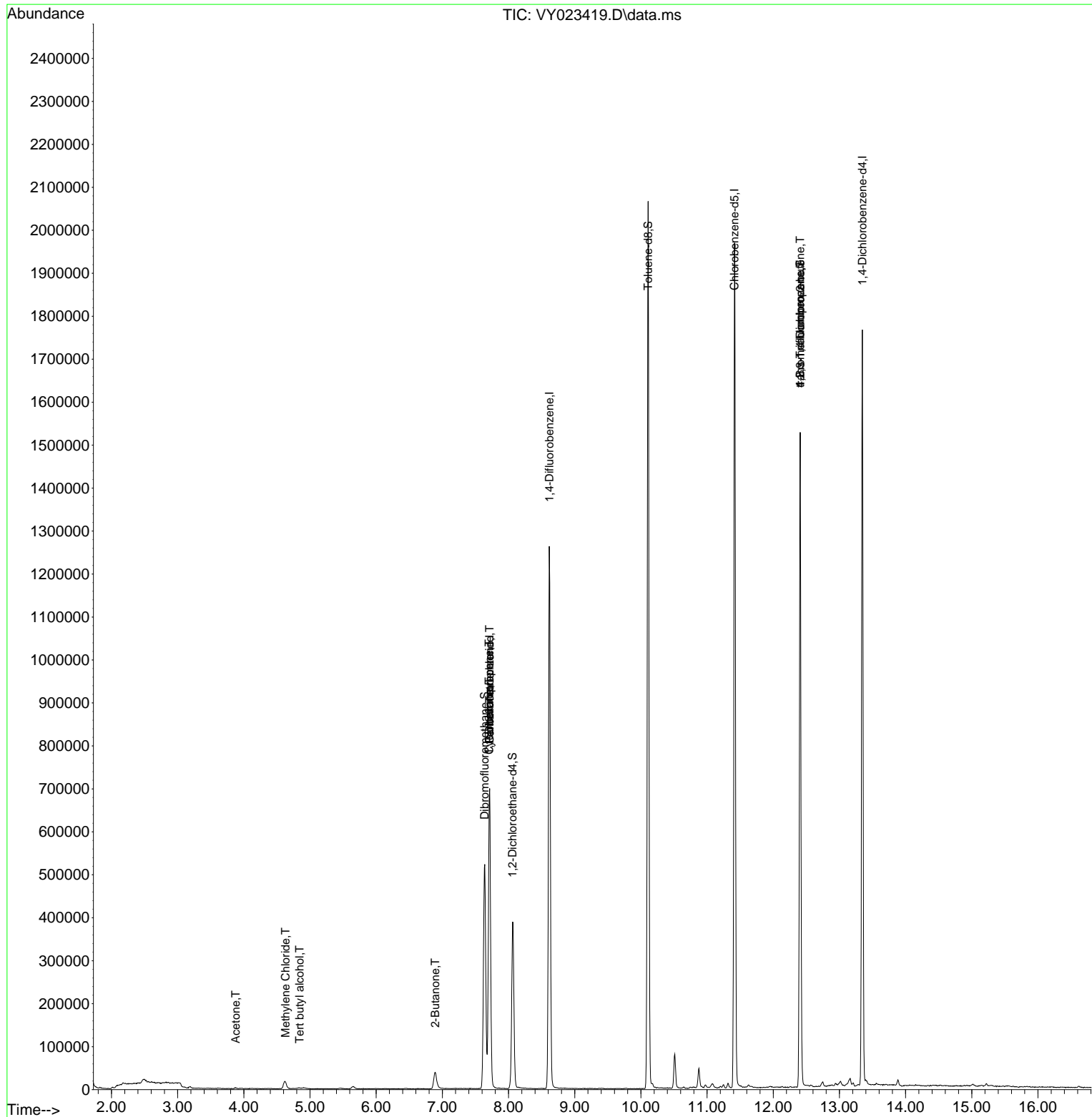
Compound	R.T.	QIon	Response	Conc	Units	Dev(Min)
Internal Standards						
1) Pentafluorobenzene	7.713	168	583600	50.000	ug/l	0.00
34) 1,4-Difluorobenzene	8.616	114	1144139	50.000	ug/l	0.00
63) Chlorobenzene-d5	11.414	117	1117620	50.000	ug/l	0.00
72) 1,4-Dichlorobenzene-d4	13.346	152	466443	50.000	ug/l	0.00
System Monitoring Compounds						
33) 1,2-Dichloroethane-d4	8.061	65	302021	61.888	ug/l	0.00
Spiked Amount	50.000	Range	50 - 163	Recovery	=	123.780%
35) Dibromofluoromethane	7.640	113	377647	53.718	ug/l	0.00
Spiked Amount	50.000	Range	54 - 147	Recovery	=	107.440%
50) Toluene-d8	10.109	98	1365268	52.147	ug/l	0.00
Spiked Amount	50.000	Range	58 - 134	Recovery	=	104.300%
62) 4-Bromofluorobenzene	12.408	95	439445	50.840	ug/l	0.00
Spiked Amount	50.000	Range	30 - 143	Recovery	=	101.680%
Target Compounds						
					Qvalue	
11) Tert butyl alcohol	4.842	59	2963	8.161	ug/l #	77
16) Acetone	3.879	43	3473	2.989	ug/l	93
20) Methylene Chloride	4.628	84	13979	2.225	ug/l	94
25) 2-Butanone	6.890	43	2093	1.476	ug/l	100
31) Cyclohexane	7.707	56	9749	1.201	ug/l #	1
36) 1,1-Dichloropropene	7.707	75	39740	4.270	ug/l #	47
38) Carbon Tetrachloride	7.713	117	53162	4.711	ug/l #	16
76) 1,2,3-Trichloropropane	12.408	75	217533	52.860	ug/l #	100
81) trans-1,4-Dichloro-2-b...	12.408	75	217533	129.623	ug/l #	15

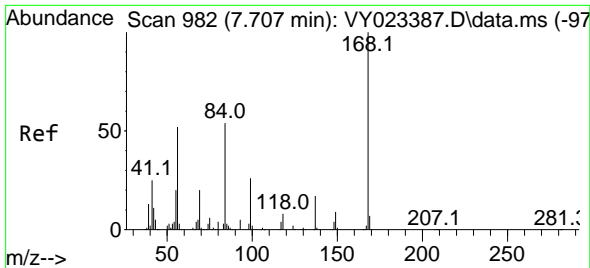
(#) = qualifier out of range (m) = manual integration (+) = signals summed

Data Path : Z:\voasrv\HPCHEM1\MSVOA_Y\Data\VY100925\
 Data File : VY023419.D
 Acq On : 09 Oct 2025 13:44
 Operator : SY/MD
 Sample : Q3321-01
 Misc : 5.60g/5.0mL/MSVOA_Y/SOIL/A
 ALS Vial : 14 Sample Multiplier: 1

Instrument :
 MSVOA_Y
 ClientSampleId :
 P001-DS-01

Quant Time: Oct 10 04:26:36 2025
 Quant Method : Z:\voasrv\HPCHEM1\MSVOA_Y\methods\82Y100725S.M
 Quant Title : SW846 8260
 QLast Update : Wed Oct 08 05:12:50 2025
 Response via : Initial Calibration

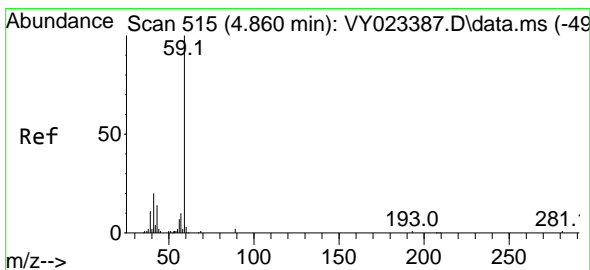
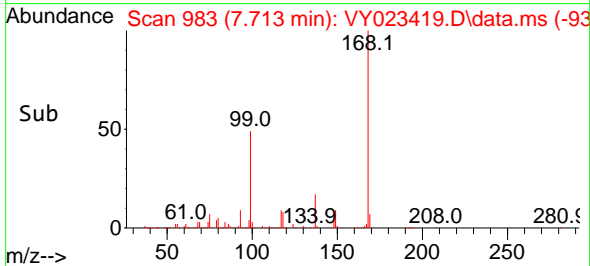
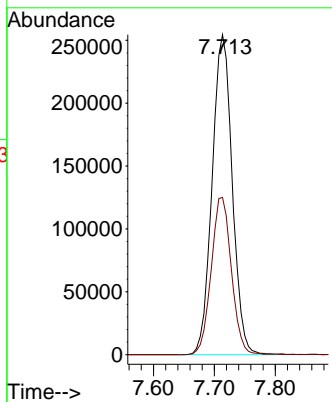
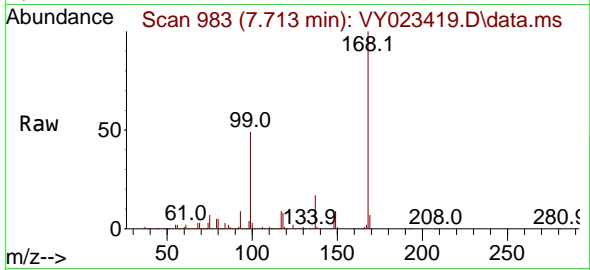




#1
 Pentafluorobenzene
 Concen: 50.000 ug/l
 RT: 7.713 min Scan# 91
 Delta R.T. 0.006 min
 Lab File: VY023419.D
 Acq: 09 Oct 2025 13:44

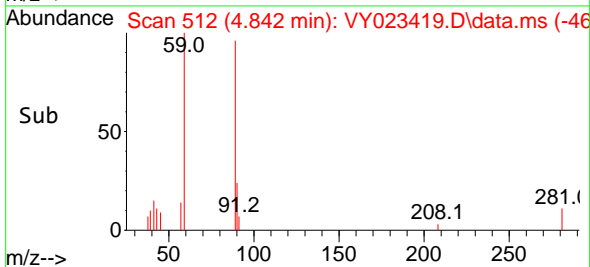
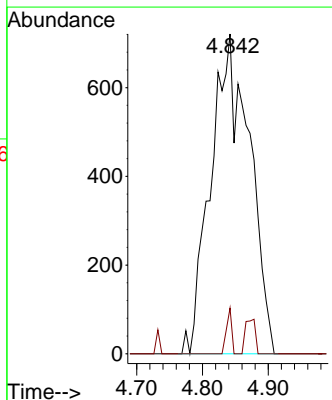
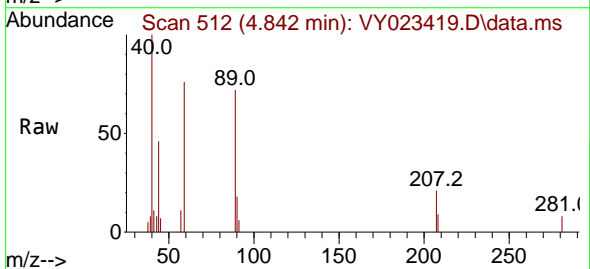
Instrument :
 MSVOA_Y
 ClientSampleId :
 P001-DS-01

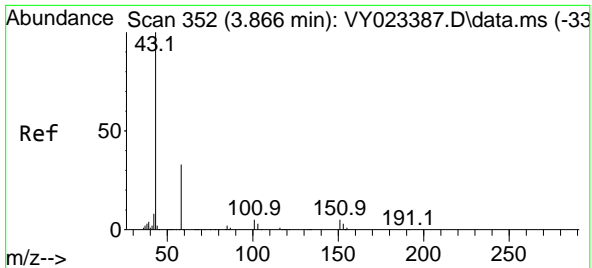
Tgt Ion:168 Resp: 583600
 Ion Ratio Lower Upper
 168 100
 99 49.2 39.7 59.5



#11
 Tert butyl alcohol
 Concen: 8.161 ug/l
 RT: 4.842 min Scan# 512
 Delta R.T. -0.018 min
 Lab File: VY023419.D
 Acq: 09 Oct 2025 13:44

Tgt Ion: 59 Resp: 2963
 Ion Ratio Lower Upper
 59 100
 57 1.9 8.3 12.5#

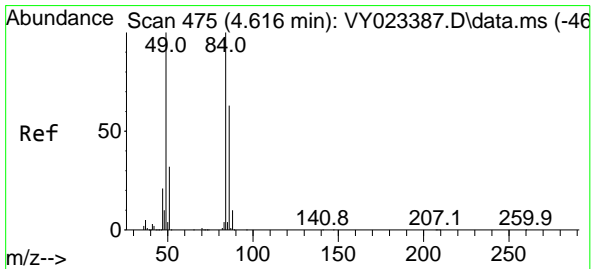
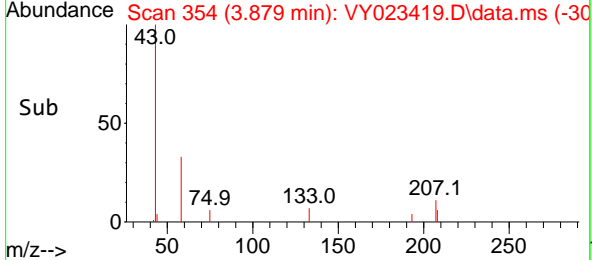
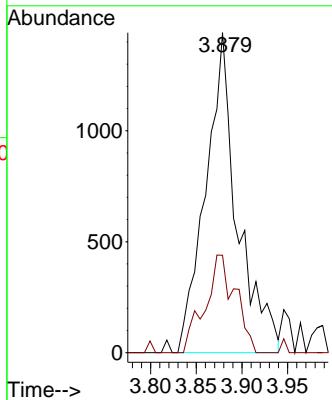
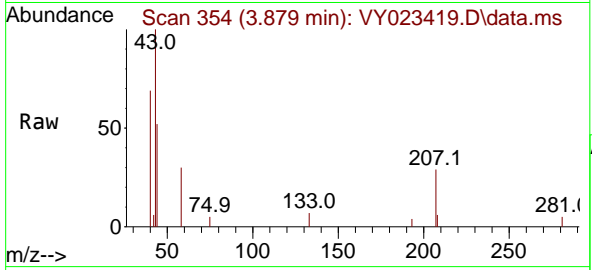




#16
 Acetone
 Concen: 2.989 ug/l
 RT: 3.879 min Scan# 31
 Delta R.T. 0.012 min
 Lab File: VY023419.D
 Acq: 09 Oct 2025 13:44

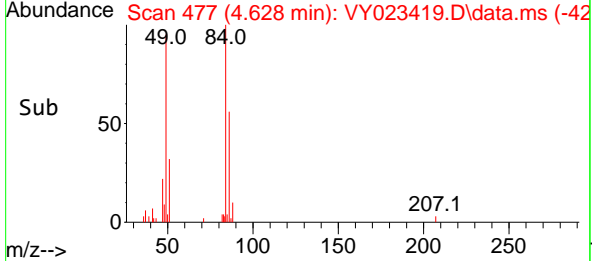
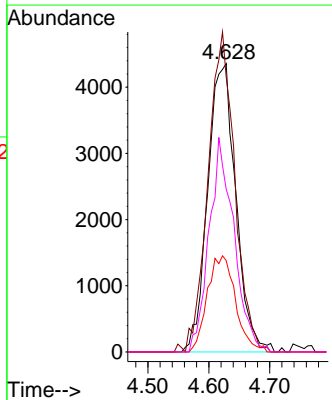
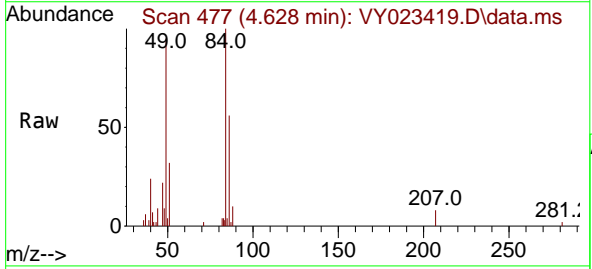
Instrument : MSVOA_Y
 ClientSampleId : P001-DS-01

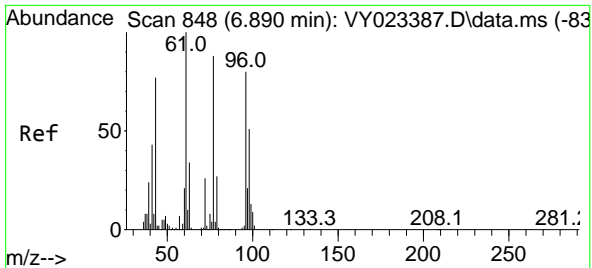
Tgt Ion: 43 Resp: 3473
 Ion Ratio Lower Upper
 43 100
 58 30.4 27.7 41.5



#20
 Methylene Chloride
 Concen: 2.225 ug/l
 RT: 4.628 min Scan# 477
 Delta R.T. 0.012 min
 Lab File: VY023419.D
 Acq: 09 Oct 2025 13:44

Tgt Ion: 84 Resp: 13979
 Ion Ratio Lower Upper
 84 100
 49 95.3 80.2 120.4
 51 31.7 25.9 38.9
 86 56.4 50.6 75.8

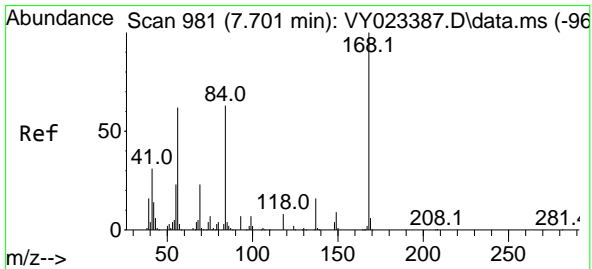
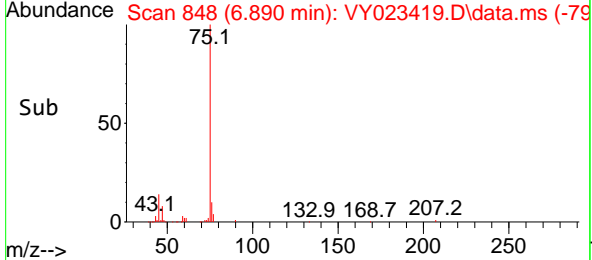
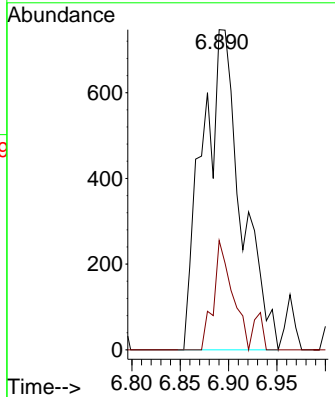
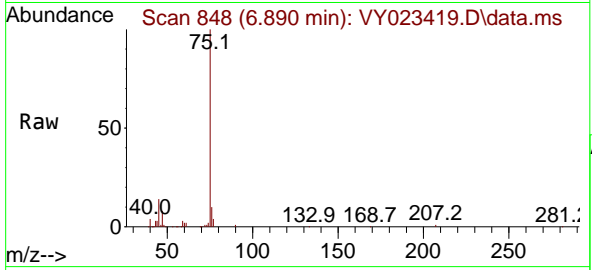




#25
 2-Butanone
 Concen: 1.476 ug/l
 RT: 6.890 min Scan# 84
 Delta R.T. -0.000 min
 Lab File: VY023419.D
 Acq: 09 Oct 2025 13:44

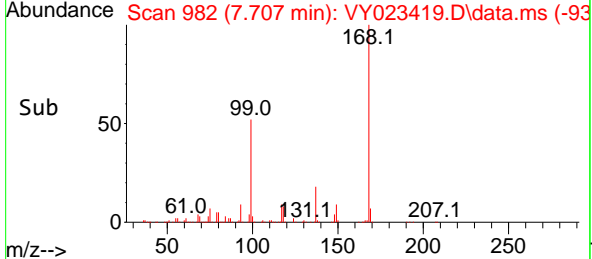
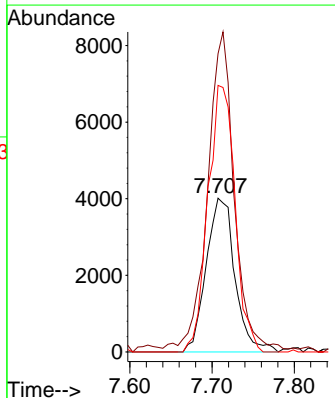
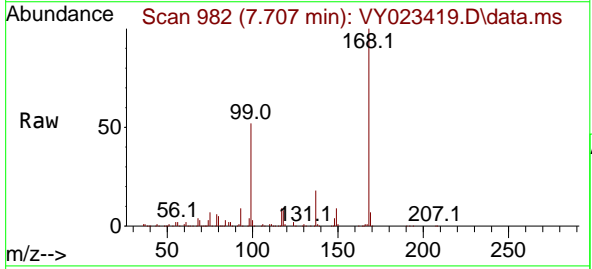
Instrument : MSVOA_Y
 ClientSampleId : P001-DS-01

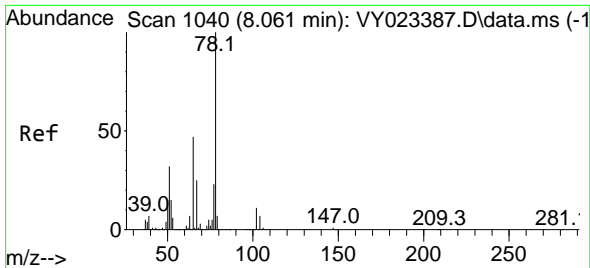
Tgt Ion: 43 Resp: 2093
 Ion Ratio Lower Upper
 43 100
 72 34.1 27.4 41.2



#31
 Cyclohexane
 Concen: 1.201 ug/l
 RT: 7.707 min Scan# 982
 Delta R.T. 0.006 min
 Lab File: VY023419.D
 Acq: 09 Oct 2025 13:44

Tgt Ion: 56 Resp: 9749
 Ion Ratio Lower Upper
 56 100
 69 189.9 30.0 45.0#
 84 173.4 81.2 121.8#

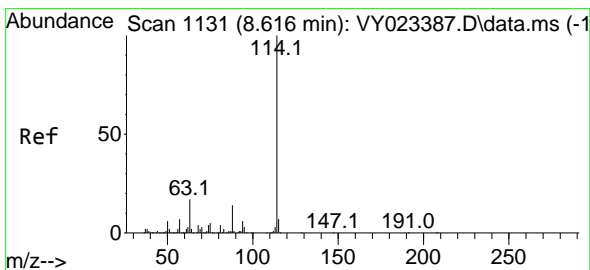
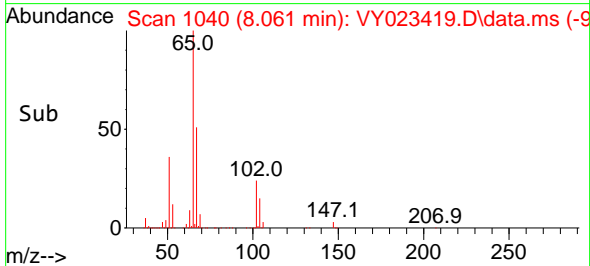
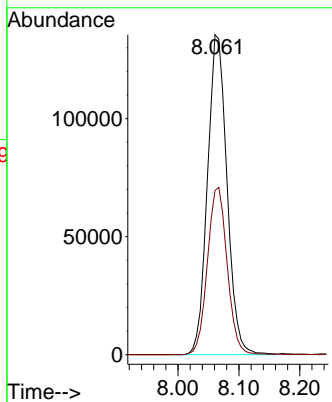
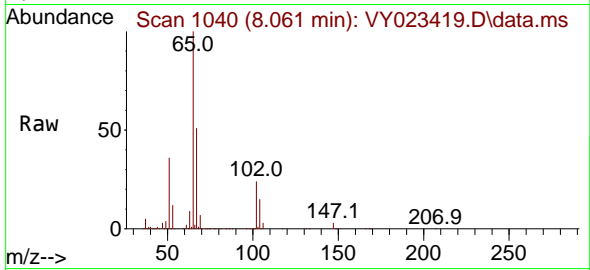




#33
 1,2-Dichloroethane-d4
 Concen: 61.888 ug/l
 RT: 8.061 min Scan# 1040
 Delta R.T. -0.000 min
 Lab File: VY023419.D
 Acq: 09 Oct 2025 13:44

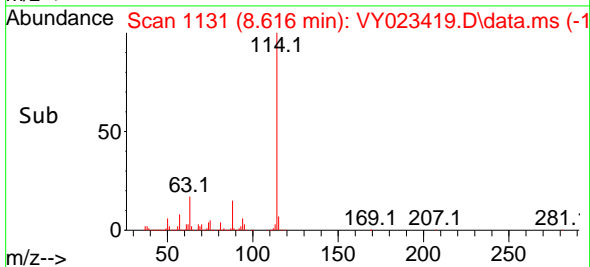
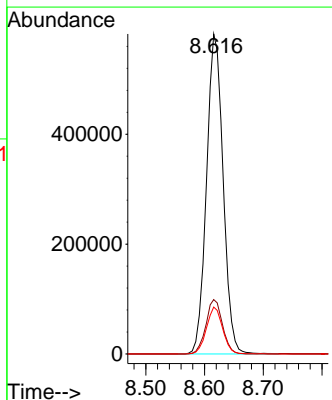
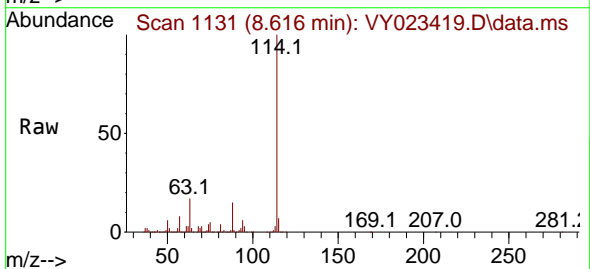
Instrument : MSVOA_Y
 ClientSampleId : P001-DS-01

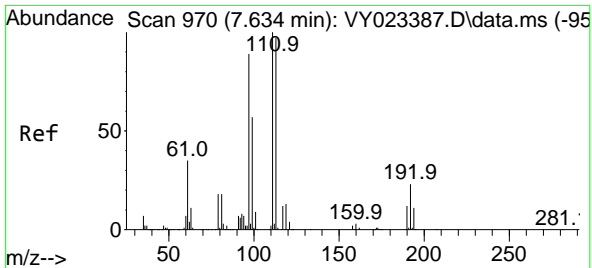
Tgt Ion: 65 Resp: 302021
 Ion Ratio Lower Upper
 65 100
 67 53.0 0.0 105.8



#34
 1,4-Difluorobenzene
 Concen: 50.000 ug/l
 RT: 8.616 min Scan# 1131
 Delta R.T. -0.000 min
 Lab File: VY023419.D
 Acq: 09 Oct 2025 13:44

Tgt Ion: 114 Resp: 1144139
 Ion Ratio Lower Upper
 114 100
 63 17.0 0.0 34.2
 88 14.6 0.0 28.4

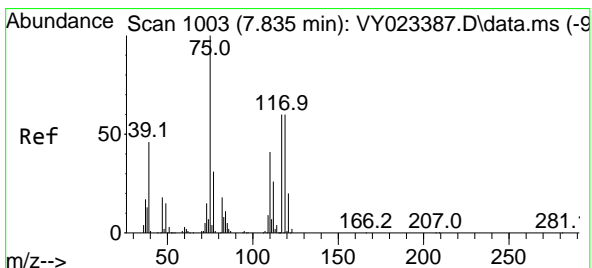
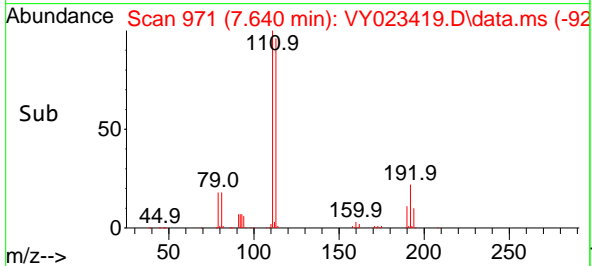
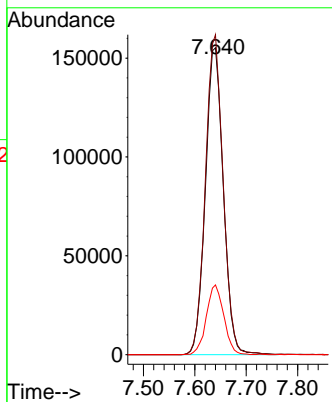
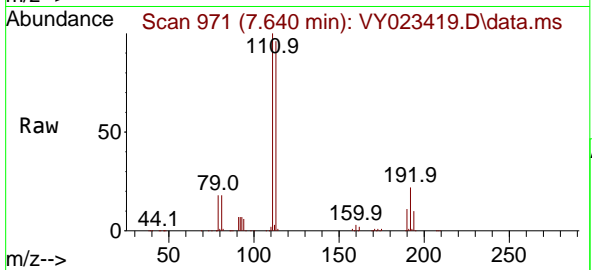




#35
 Dibromofluoromethane
 Concen: 53.718 ug/l
 RT: 7.640 min Scan# 911
 Delta R.T. 0.006 min
 Lab File: VY023419.D
 Acq: 09 Oct 2025 13:44

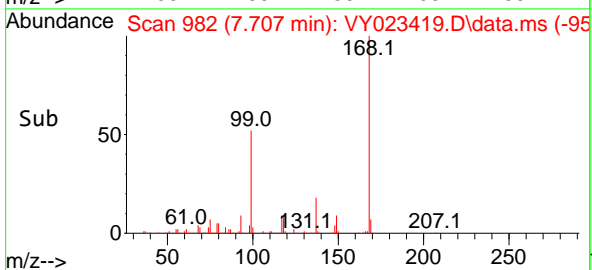
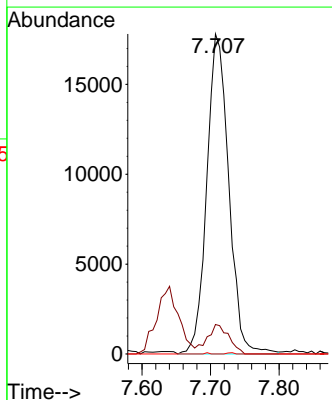
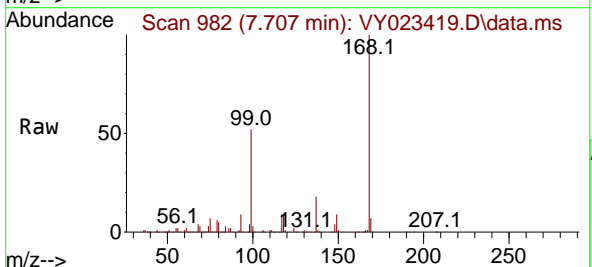
Instrument : MSVOA_Y
 ClientSampleId : P001-DS-01

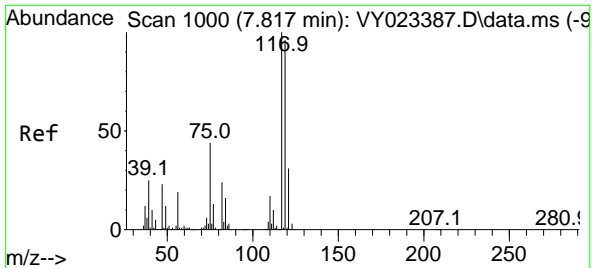
Tgt Ion	Resp	Lower	Upper
113	377647		
113	100		
111	103.0	81.8	122.6
192	22.1	18.0	27.0



#36
 1,1-Dichloropropene
 Concen: 4.270 ug/l
 RT: 7.707 min Scan# 982
 Delta R.T. -0.128 min
 Lab File: VY023419.D
 Acq: 09 Oct 2025 13:44

Tgt Ion	Resp	Lower	Upper
75	39740		
75	100		
110	9.0	19.9	59.7#
77	0.1	25.0	37.6#

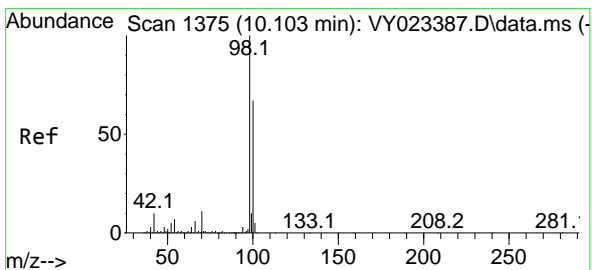
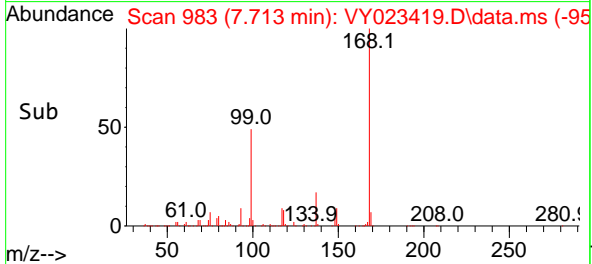
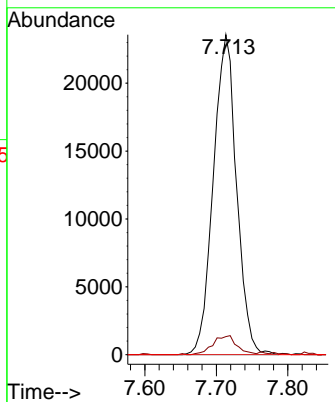
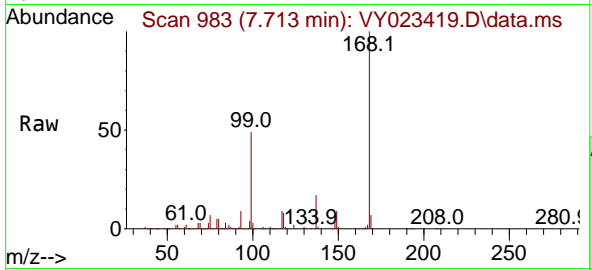




#38
 Carbon Tetrachloride
 Concen: 4.711 ug/l
 RT: 7.713 min Scan# 91
 Delta R.T. -0.104 min
 Lab File: VY023419.D
 Acq: 09 Oct 2025 13:44

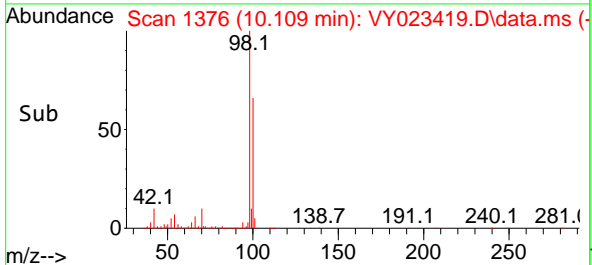
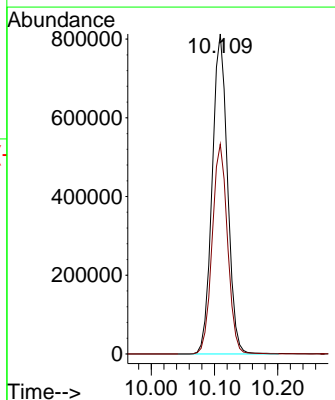
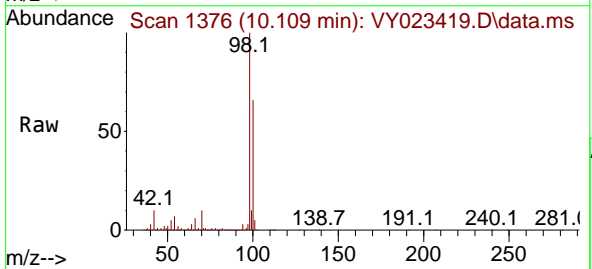
Instrument : MSVOA_Y
 ClientSampleId : P001-DS-01

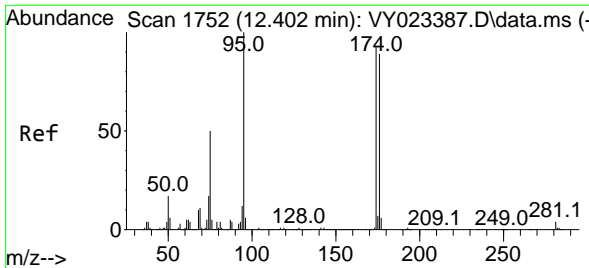
Tgt Ion:117 Resp: 53162
 Ion Ratio Lower Upper
 117 100
 119 5.7 76.8 115.2#
 121 0.0 24.5 36.7#



#50
 Toluene-d8
 Concen: 52.147 ug/l
 RT: 10.109 min Scan# 1376
 Delta R.T. 0.006 min
 Lab File: VY023419.D
 Acq: 09 Oct 2025 13:44

Tgt Ion: 98 Resp: 1365268
 Ion Ratio Lower Upper
 98 100
 100 65.4 53.0 79.4



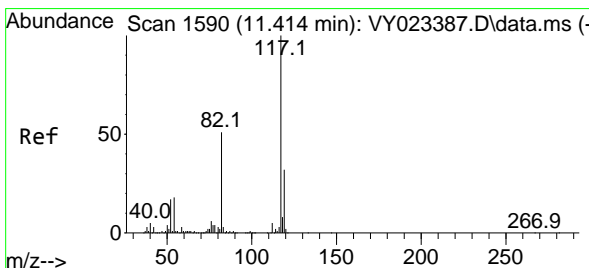
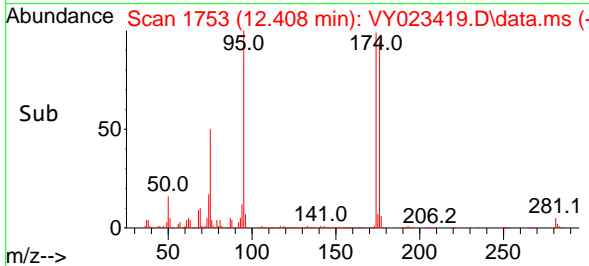
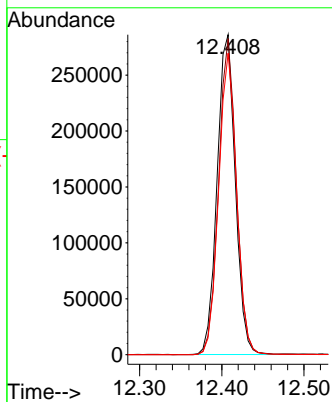
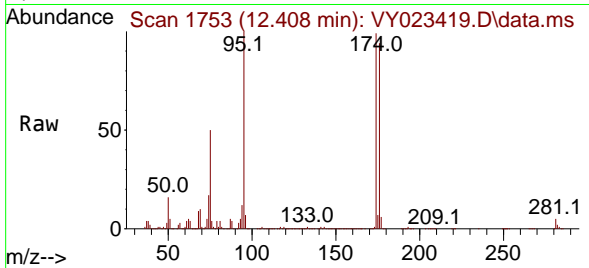


#62
 4-Bromofluorobenzene
 Concen: 50.840 ug/l
 RT: 12.408 min Scan# 1753
 Delta R.T. 0.006 min
 Lab File: VY023419.D
 Acq: 09 Oct 2025 13:44

Instrument : MSVOA_Y
 ClientSampleId : P001-DS-01

Tgt Ion: 95 Resp: 439445

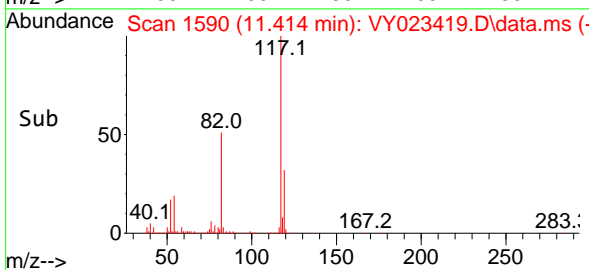
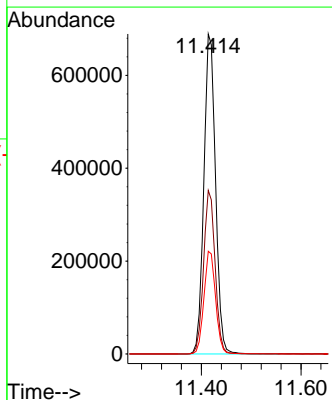
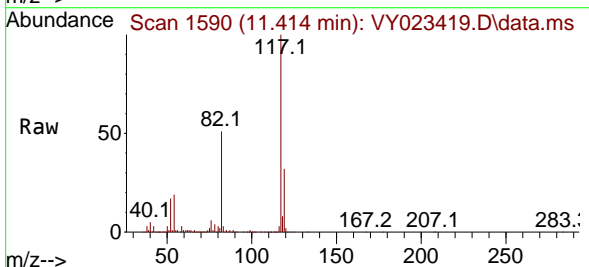
Ion	Ratio	Lower	Upper
95	100		
174	96.8	0.0	192.8
176	93.0	0.0	187.6

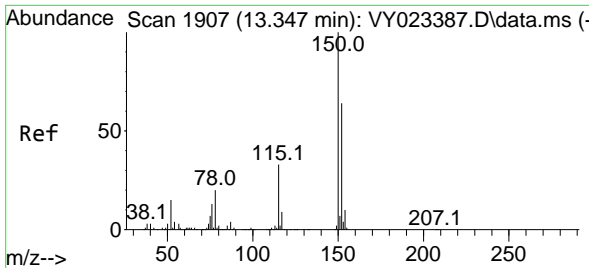


#63
 Chlorobenzene-d5
 Concen: 50.000 ug/l
 RT: 11.414 min Scan# 1590
 Delta R.T. -0.000 min
 Lab File: VY023419.D
 Acq: 09 Oct 2025 13:44

Tgt Ion: 117 Resp: 1117620

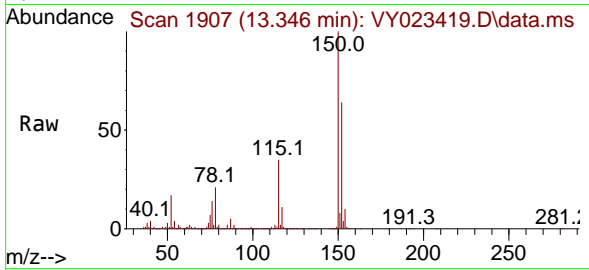
Ion	Ratio	Lower	Upper
117	100		
82	51.1	41.0	61.4
119	32.1	25.6	38.4



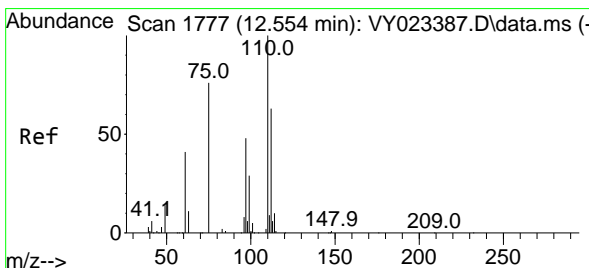
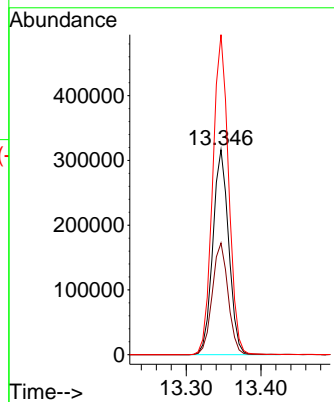
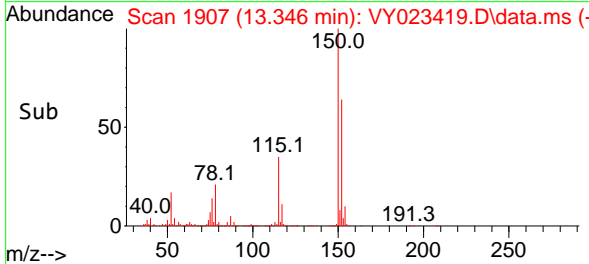


#72
 1,4-Dichlorobenzene-d4
 Concen: 50.000 ug/l
 RT: 13.346 min Scan# 11
 Delta R.T. -0.000 min
 Lab File: VY023419.D
 Acq: 09 Oct 2025 13:44

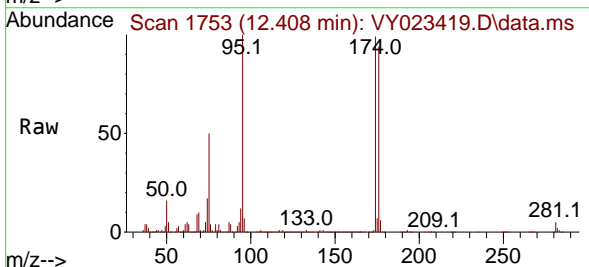
Instrument : MSVOA_Y
 ClientSampleId : P001-DS-01



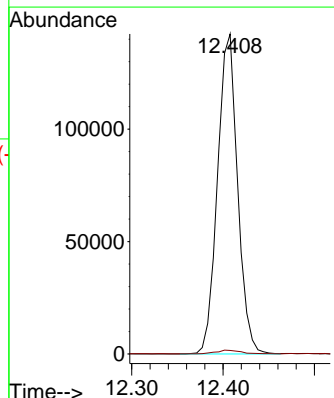
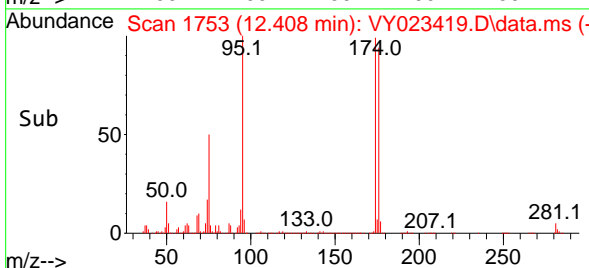
Tgt Ion:152 Resp: 466443
 Ion Ratio Lower Upper
 152 100
 115 54.6 27.1 81.2
 150 156.8 0.0 347.4

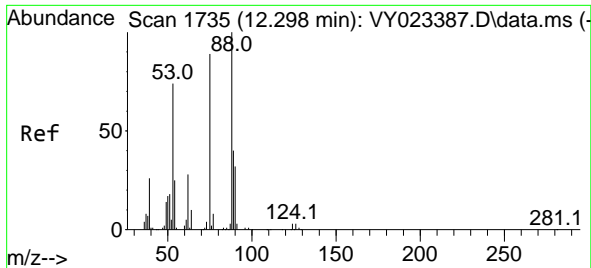


#76
 1,2,3-Trichloropropane
 Concen: 52.860 ug/l
 RT: 12.408 min Scan# 1753
 Delta R.T. -0.146 min
 Lab File: VY023419.D
 Acq: 09 Oct 2025 13:44



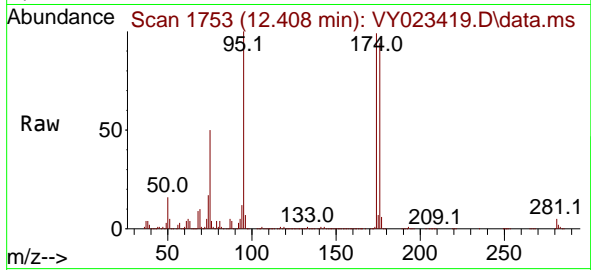
Tgt Ion: 75 Resp: 217533
 Ion Ratio Lower Upper
 75 100
 77 1.4 0.0 0.0#





#81
 trans-1,4-Dichloro-2-butene
 Concen: 129.623 ug/l
 RT: 12.408 min Scan# 11
 Delta R.T. 0.110 min
 Lab File: VY023419.D
 Acq: 09 Oct 2025 13:44

Instrument :
 MSVOA_Y
 ClientSampleId :
 P001-DS-01



Tgt Ion: 75 Resp: 217533
 Ion Ratio Lower Upper
 75 100
 53 0.3 68.6 102.8#
 89 0.1 39.0 58.4#

