

Data Path : Z:\voasrv\HPCHEM1\MSVOA_Y\Data\VY100925\
 Data File : VY023421.D
 Acq On : 09 Oct 2025 14:59
 Operator : SY/MD
 Sample : VIBLK
 Misc : 5.00g/5.0mL/MSVOA_Y/SOIL
 ALS Vial : 16 Sample Multiplier: 1

Instrument :
 MSVOA_Y
 ClientSampleId :
 VIBLK

Quant Time: Oct 10 04:27:22 2025
 Quant Method : Z:\voasrv\HPCHEM1\MSVOA_Y\methods\82Y100725S.M
 Quant Title : SW846 8260
 QLast Update : Wed Oct 08 05:12:50 2025
 Response via : Initial Calibration

Compound	R.T.	QIon	Response	Conc	Units	Dev(Min)

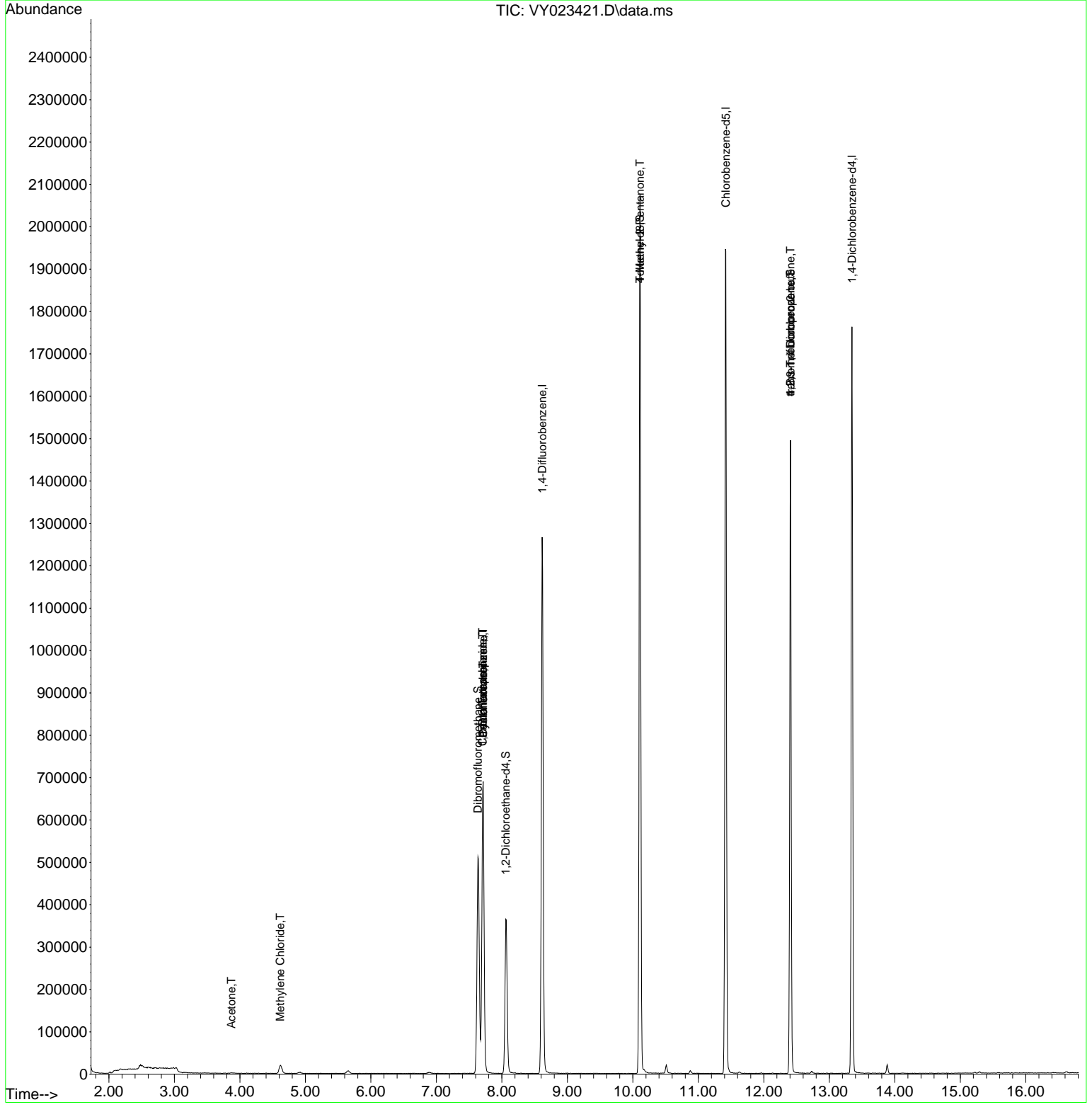
Internal Standards						
1) Pentafluorobenzene	7.713	168	578943	50.000	ug/l	0.00
34) 1,4-Difluorobenzene	8.616	114	1142963	50.000	ug/l	0.00
63) Chlorobenzene-d5	11.420	117	1128541	50.000	ug/l	0.00
72) 1,4-Dichlorobenzene-d4	13.347	152	477751	50.000	ug/l	0.00
System Monitoring Compounds						
33) 1,2-Dichloroethane-d4	8.061	65	290246	59.953	ug/l	0.00
Spiked Amount	50.000	Range	50 - 163	Recovery	=	119.900%
35) Dibromofluoromethane	7.634	113	375547	53.474	ug/l	0.00
Spiked Amount	50.000	Range	54 - 147	Recovery	=	106.940%
50) Toluene-d8	10.109	98	1373364	52.510	ug/l	0.00
Spiked Amount	50.000	Range	58 - 134	Recovery	=	105.020%
62) 4-Bromofluorobenzene	12.408	95	439758	50.929	ug/l	0.00
Spiked Amount	50.000	Range	30 - 143	Recovery	=	101.860%
Target Compounds						
						Qvalue
16) Acetone	3.873	43	2356	2.044	ug/l	93
20) Methylene Chloride	4.616	84	16389	2.630	ug/l	94
31) Cyclohexane	7.713	56	9863	1.225	ug/l #	1
36) 1,1-Dichloropropene	7.707	75	37684	4.053	ug/l #	48
38) Carbon Tetrachloride	7.707	117	52232	4.633	ug/l #	17
51) 4-Methyl-2-Pentanone	10.109	43	5311	1.400	ug/l #	1
76) 1,2,3-Trichloropropane	12.408	75	216521	51.369	ug/l #	100
81) trans-1,4-Dichloro-2-b...	12.408	75	216521	125.966	ug/l #	15

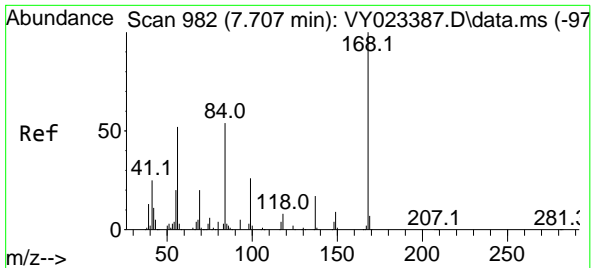
(#) = qualifier out of range (m) = manual integration (+) = signals summed

Data Path : Z:\voasrv\HPCHEM1\MSVOA_Y\Data\VY100925\
Data File : VY023421.D
Acq On : 09 Oct 2025 14:59
Operator : SY/MD
Sample : VIBLK
Misc : 5.00g/5.0mL/MSVOA_Y/SOIL
ALS Vial : 16 Sample Multiplier: 1

Instrument :
MSVOA_Y
ClientSampleId :
VIBLK

Quant Time: Oct 10 04:27:22 2025
Quant Method : Z:\voasrv\HPCHEM1\MSVOA_Y\methods\82Y100725S.M
Quant Title : SW846 8260
QLast Update : Wed Oct 08 05:12:50 2025
Response via : Initial Calibration

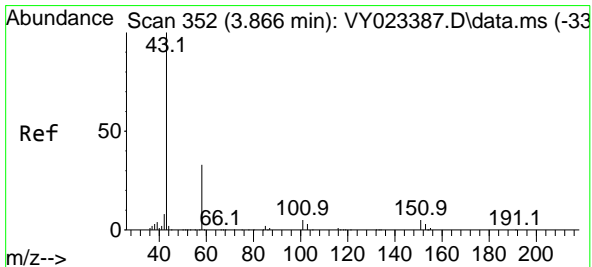
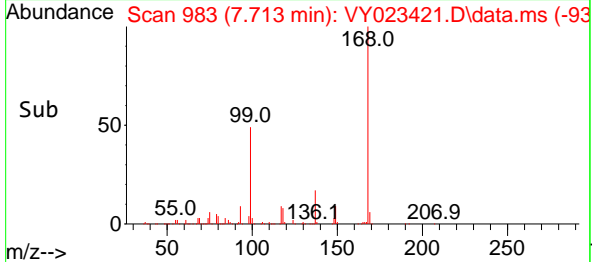
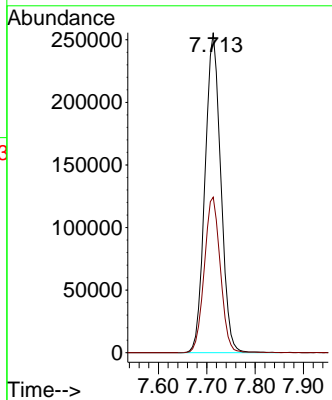
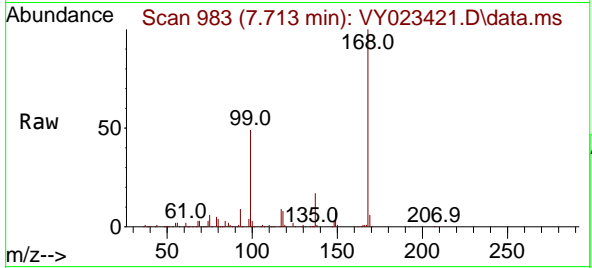




#1
 Pentafluorobenzene
 Concen: 50.000 ug/l
 RT: 7.713 min Scan# 91
 Delta R.T. 0.006 min
 Lab File: VY023421.D
 Acq: 09 Oct 2025 14:59

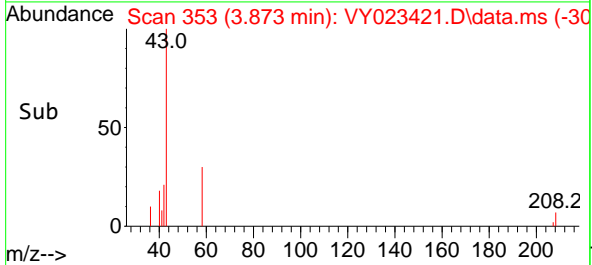
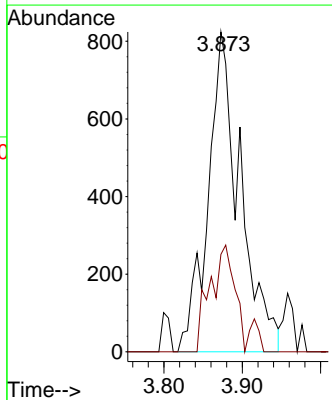
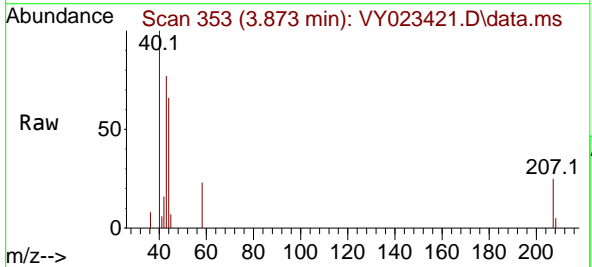
Instrument :
 MSVOA_Y
 ClientSampleId :
 VIBLK

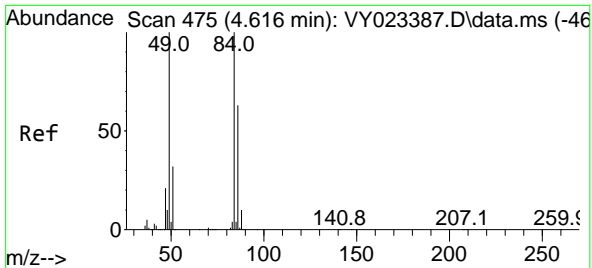
Tgt Ion:168 Resp: 578943
 Ion Ratio Lower Upper
 168 100
 99 48.6 39.7 59.5



#16
 Acetone
 Concen: 2.044 ug/l
 RT: 3.873 min Scan# 353
 Delta R.T. 0.006 min
 Lab File: VY023421.D
 Acq: 09 Oct 2025 14:59

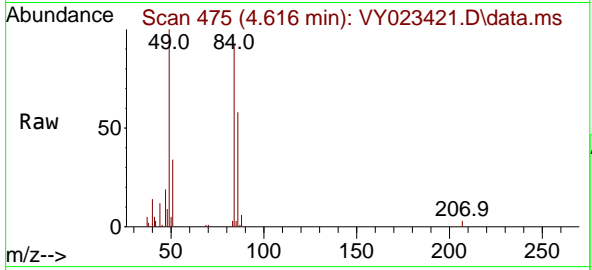
Tgt Ion: 43 Resp: 2356
 Ion Ratio Lower Upper
 43 100
 58 30.5 27.7 41.5





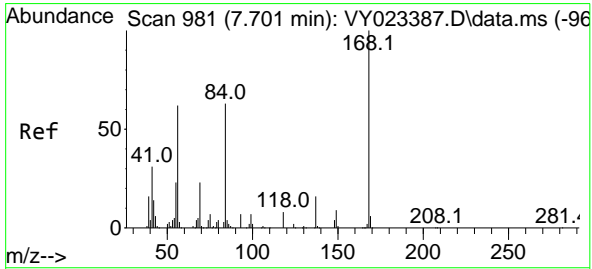
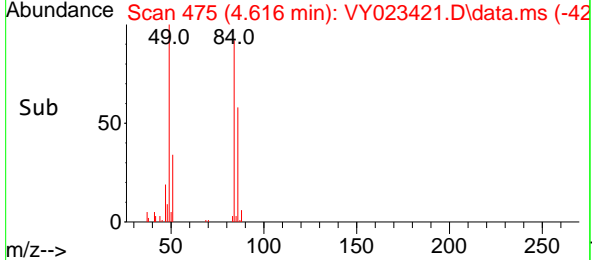
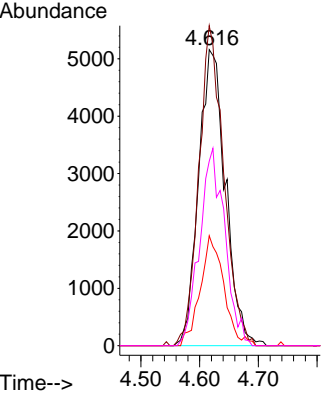
#20
 Methylene Chloride
 Concen: 2.630 ug/l
 RT: 4.616 min Scan# 41
 Delta R.T. 0.000 min
 Lab File: VY023421.D
 Acq: 09 Oct 2025 14:59

Instrument :
 MSVOA_Y
 ClientSampleId :
 VIBLK

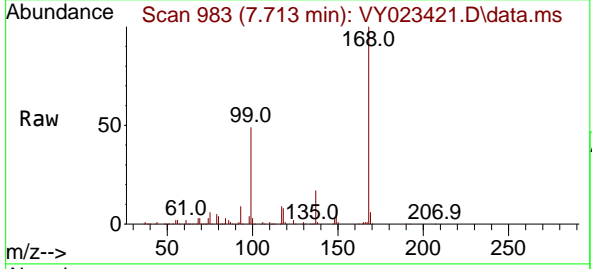


Tgt Ion: 84 Resp: 16389

Ion	Ratio	Lower	Upper
84	100		
49	108.1	80.2	120.4
51	37.2	25.9	38.9
86	62.3	50.6	75.8

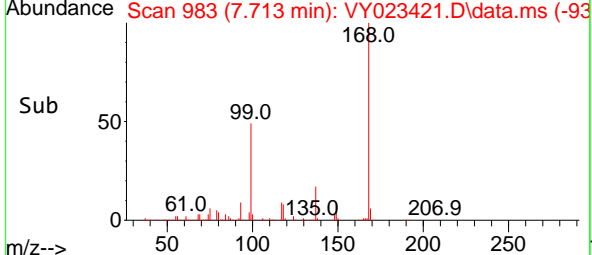
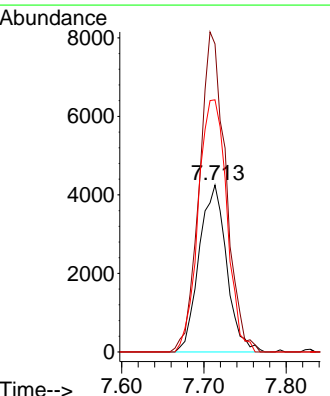


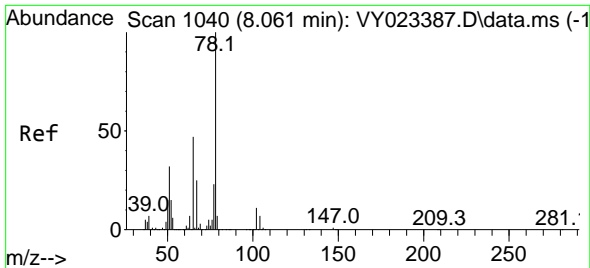
#31
 Cyclohexane
 Concen: 1.225 ug/l
 RT: 7.713 min Scan# 983
 Delta R.T. 0.012 min
 Lab File: VY023421.D
 Acq: 09 Oct 2025 14:59



Tgt Ion: 56 Resp: 9863

Ion	Ratio	Lower	Upper
56	100		
69	184.6	30.0	45.0#
84	151.1	81.2	121.8#

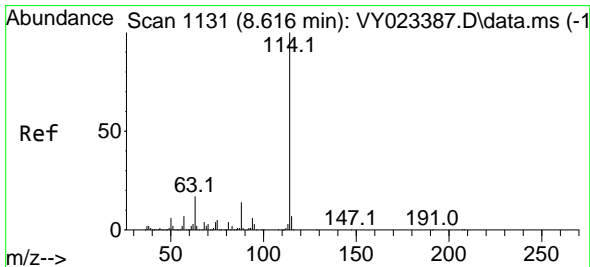
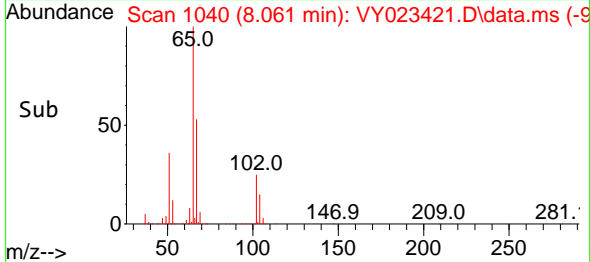
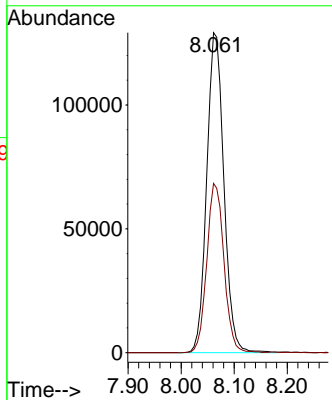
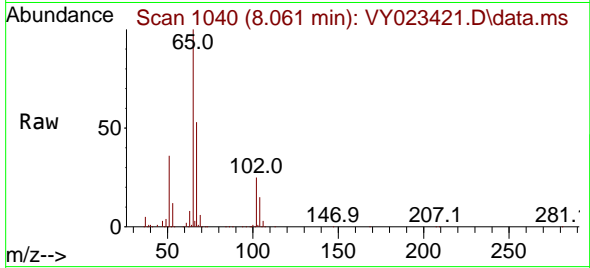




#33
 1,2-Dichloroethane-d4
 Concen: 59.953 ug/l
 RT: 8.061 min Scan# 1040
 Delta R.T. 0.000 min
 Lab File: VY023421.D
 Acq: 09 Oct 2025 14:59

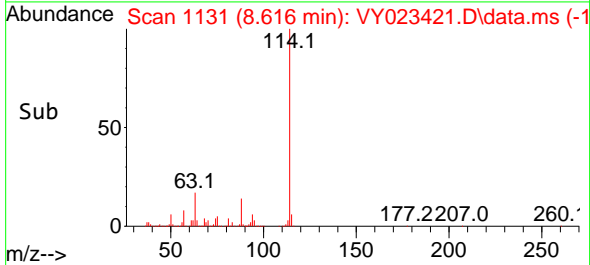
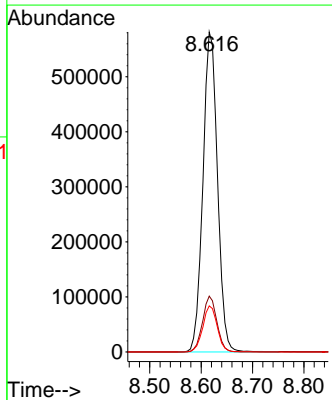
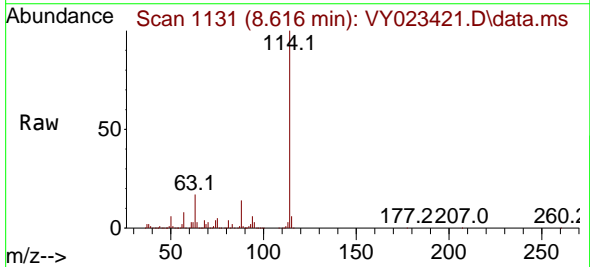
Instrument : MSVOA_Y
 ClientSampleId : VIBLK

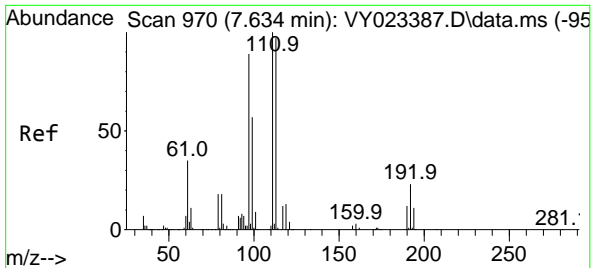
Tgt Ion: 65 Resp: 290246
 Ion Ratio Lower Upper
 65 100
 67 53.1 0.0 105.8



#34
 1,4-Difluorobenzene
 Concen: 50.000 ug/l
 RT: 8.616 min Scan# 1131
 Delta R.T. 0.000 min
 Lab File: VY023421.D
 Acq: 09 Oct 2025 14:59

Tgt Ion:114 Resp: 1142963
 Ion Ratio Lower Upper
 114 100
 63 17.5 0.0 34.2
 88 14.4 0.0 28.4



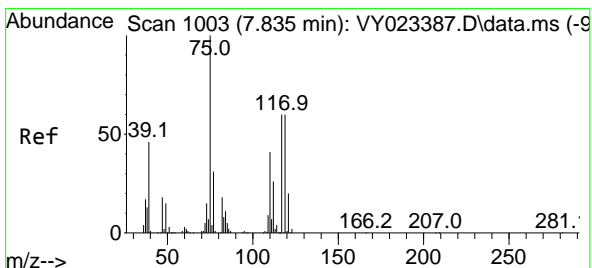
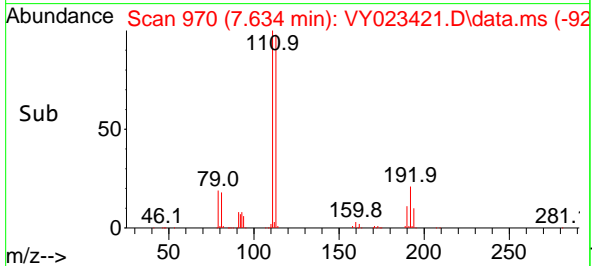
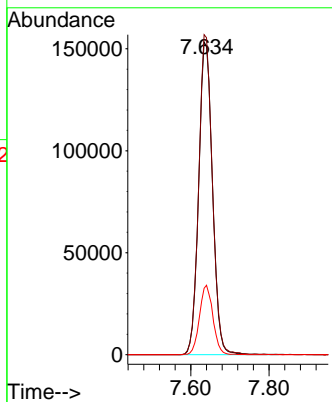
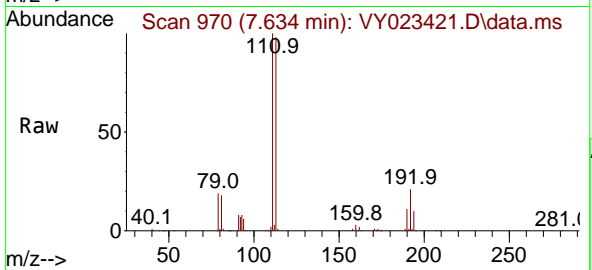


#35
 Dibromofluoromethane
 Concen: 53.474 ug/l
 RT: 7.634 min Scan# 91
 Delta R.T. 0.000 min
 Lab File: VY023421.D
 Acq: 09 Oct 2025 14:59

Instrument :
 MSVOA_Y
 ClientSampleId :
 VIBLK

Tgt Ion:113 Resp: 375547

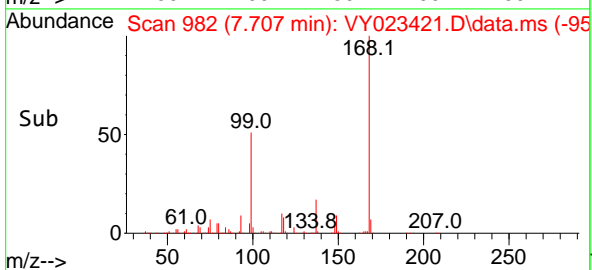
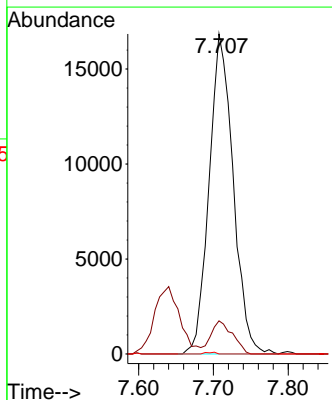
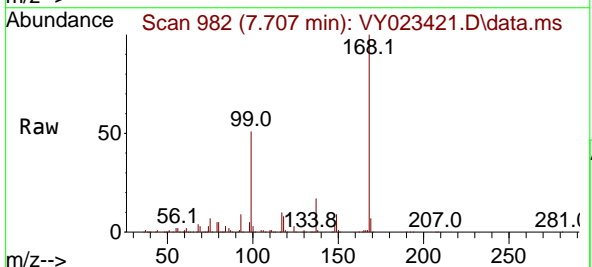
Ion	Ratio	Lower	Upper
113	100		
111	101.4	81.8	122.6
192	21.6	18.0	27.0

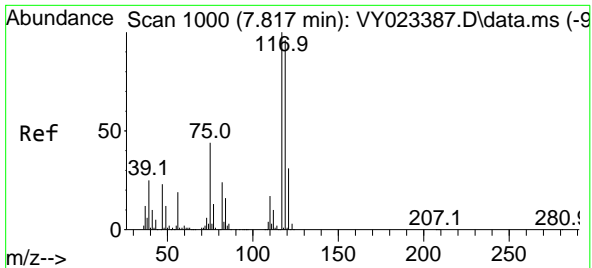


#36
 1,1-Dichloropropene
 Concen: 4.053 ug/l
 RT: 7.707 min Scan# 982
 Delta R.T. -0.128 min
 Lab File: VY023421.D
 Acq: 09 Oct 2025 14:59

Tgt Ion: 75 Resp: 37684

Ion	Ratio	Lower	Upper
75	100		
110	9.3	19.9	59.7#
77	0.2	25.0	37.6#

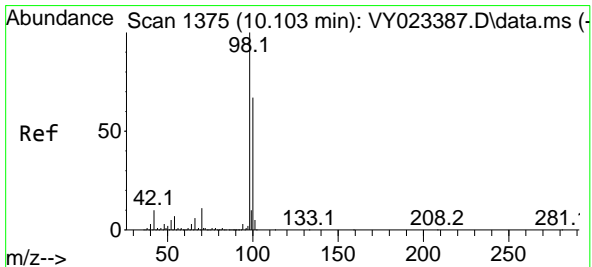
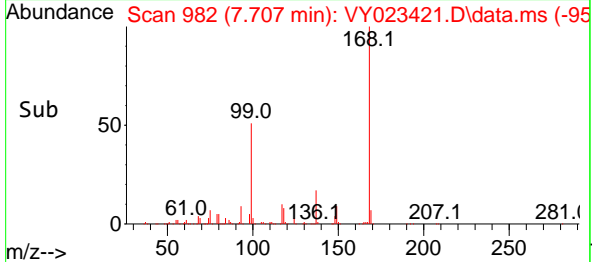
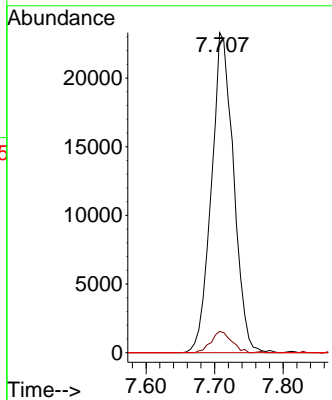
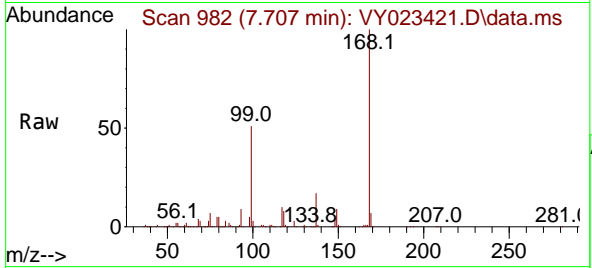




#38
 Carbon Tetrachloride
 Concen: 4.633 ug/l
 RT: 7.707 min Scan# 91
 Delta R.T. -0.110 min
 Lab File: VY023421.D
 Acq: 09 Oct 2025 14:59

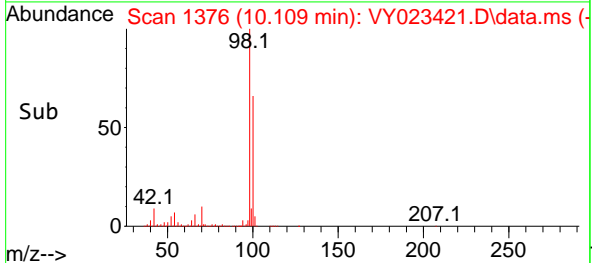
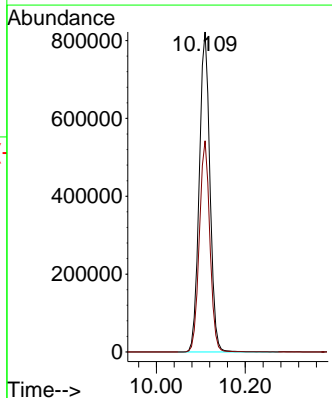
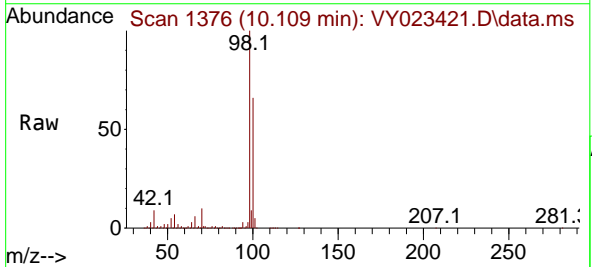
Instrument : MSVOA_Y
 ClientSampleId : VIBLK

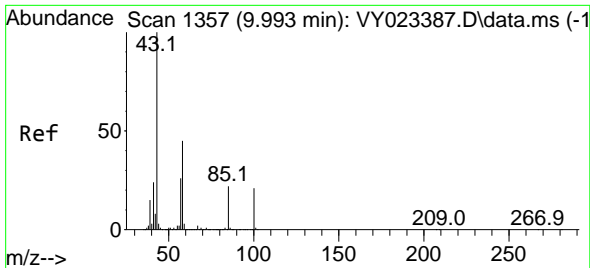
Tgt Ion:117 Resp: 52232
 Ion Ratio Lower Upper
 117 100
 119 6.6 76.8 115.2#
 121 0.0 24.5 36.7#



#50
 Toluene-d8
 Concen: 52.510 ug/l
 RT: 10.109 min Scan# 1376
 Delta R.T. 0.006 min
 Lab File: VY023421.D
 Acq: 09 Oct 2025 14:59

Tgt Ion: 98 Resp: 1373364
 Ion Ratio Lower Upper
 98 100
 100 65.1 53.0 79.4

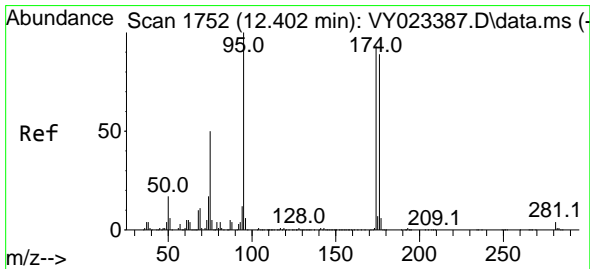
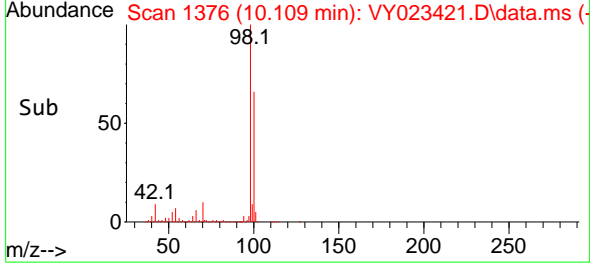
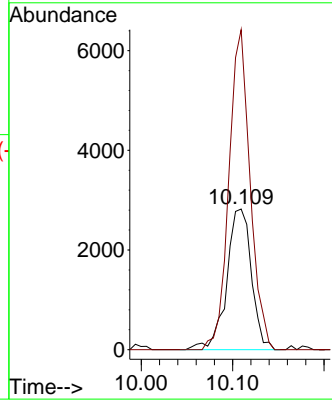
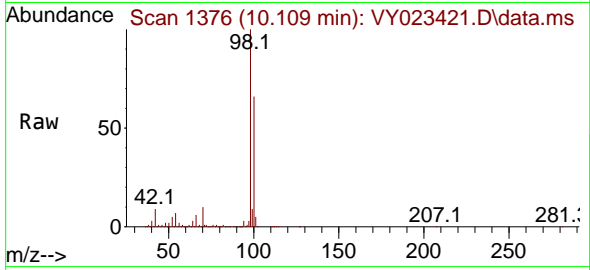




#51
 4-Methyl-2-Pentanone
 Concen: 1.400 ug/l
 RT: 10.109 min Scan# 11
 Delta R.T. 0.116 min
 Lab File: VY023421.D
 Acq: 09 Oct 2025 14:59

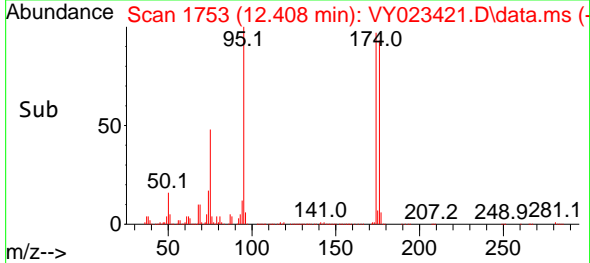
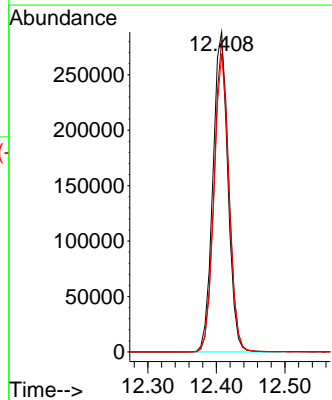
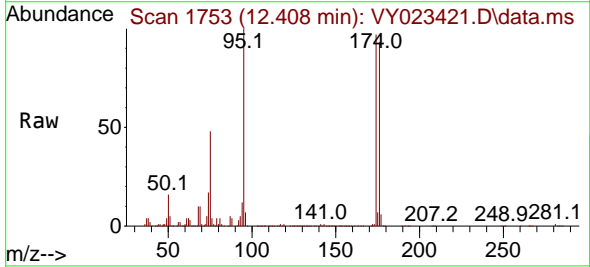
Instrument :
 MSVOA_Y
 ClientSampleId :
 VIBLK

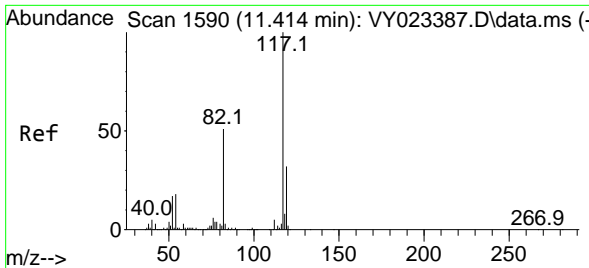
Tgt Ion: 43 Resp: 5311
 Ion Ratio Lower Upper
 43 100
 58 195.2 35.3 52.9#



#62
 4-Bromofluorobenzene
 Concen: 50.929 ug/l
 RT: 12.408 min Scan# 1753
 Delta R.T. 0.006 min
 Lab File: VY023421.D
 Acq: 09 Oct 2025 14:59

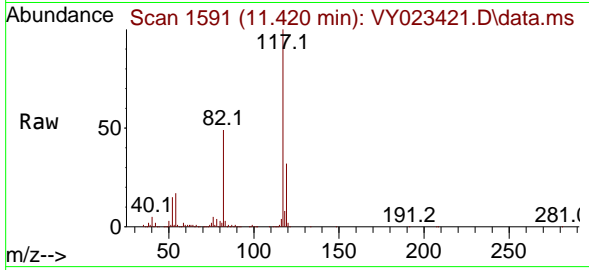
Tgt Ion: 95 Resp: 439758
 Ion Ratio Lower Upper
 95 100
 174 96.2 0.0 192.8
 176 92.1 0.0 187.6



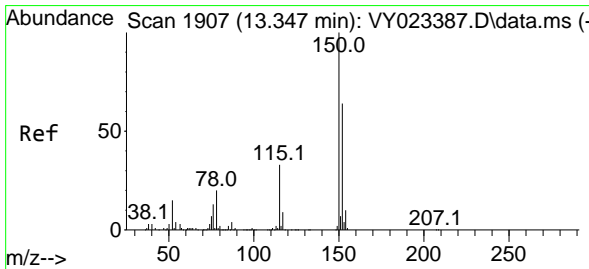
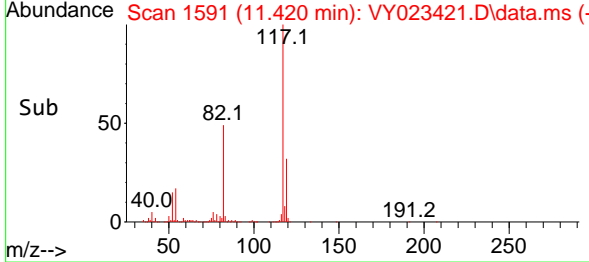
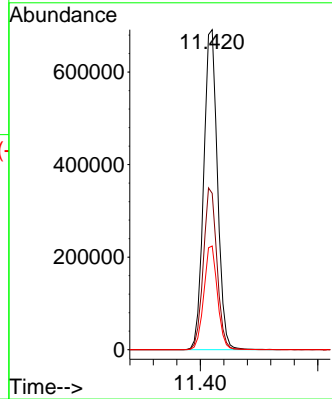


#63
 Chlorobenzene-d5
 Concen: 50.000 ug/l
 RT: 11.420 min Scan# 11
 Delta R.T. 0.006 min
 Lab File: VY023421.D
 Acq: 09 Oct 2025 14:59

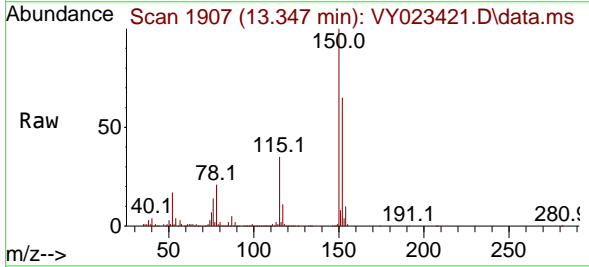
Instrument :
 MSVOA_Y
 ClientSampleId :
 VIBLK



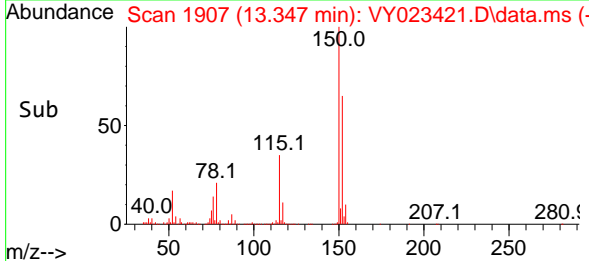
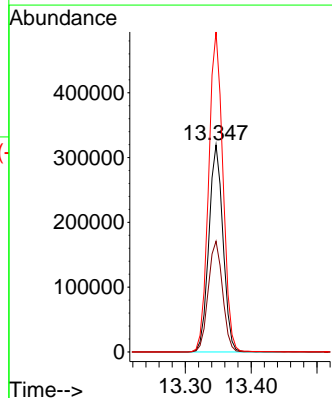
Tgt Ion:117 Resp: 1128541
 Ion Ratio Lower Upper
 117 100
 82 48.9 41.0 61.4
 119 32.4 25.6 38.4

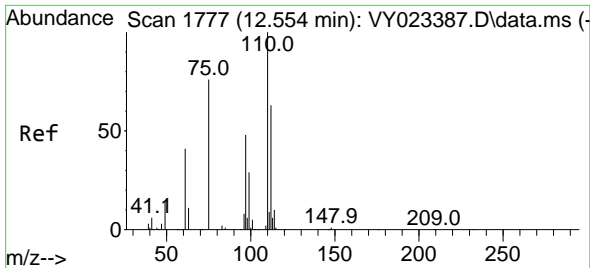


#72
 1,4-Dichlorobenzene-d4
 Concen: 50.000 ug/l
 RT: 13.347 min Scan# 1907
 Delta R.T. 0.000 min
 Lab File: VY023421.D
 Acq: 09 Oct 2025 14:59



Tgt Ion:152 Resp: 477751
 Ion Ratio Lower Upper
 152 100
 115 54.3 27.1 81.2
 150 156.4 0.0 347.4

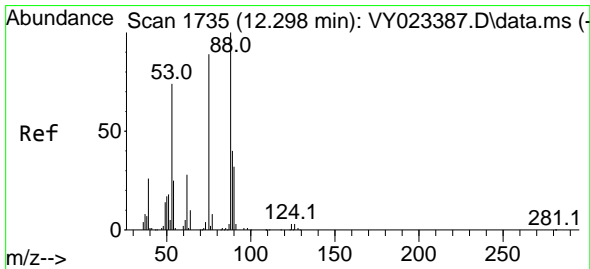
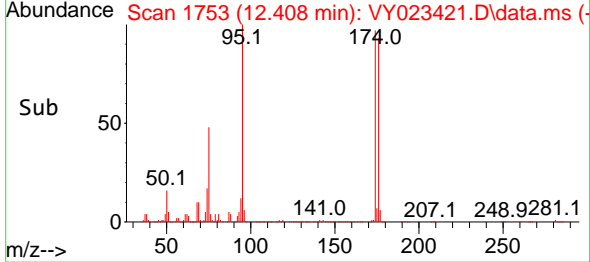
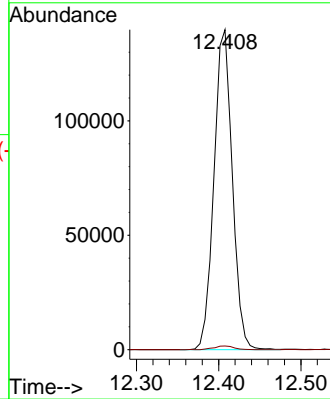
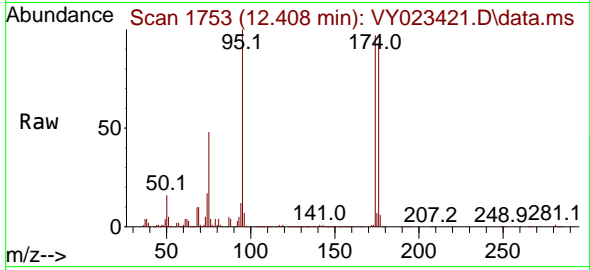




#76
 1,2,3-Trichloropropane
 Concen: 51.369 ug/l
 RT: 12.408 min Scan# 1753
 Delta R.T. -0.146 min
 Lab File: VY023421.D
 Acq: 09 Oct 2025 14:59

Instrument : MSVOA_Y
 ClientSampleId : VIBLK

Tgt Ion: 75 Resp: 216521
 Ion Ratio Lower Upper
 75 100
 77 1.3 0.0 0.0#



#81
 trans-1,4-Dichloro-2-butene
 Concen: 125.966 ug/l
 RT: 12.408 min Scan# 1753
 Delta R.T. 0.110 min
 Lab File: VY023421.D
 Acq: 09 Oct 2025 14:59

Tgt Ion: 75 Resp: 216521
 Ion Ratio Lower Upper
 75 100
 53 0.2 68.6 102.8#
 89 0.0 39.0 58.4#

