

Data Path : Z:\voasrv\HPCHEM1\MSVOA_Y\Data\VY101325\
 Data File : VY023453.D
 Acq On : 13 Oct 2025 15:29
 Operator : SY/MD
 Sample : Q3337-03
 Misc : 5.00g/5.0mL/MSVOA_Y/SOIL/A
 ALS Vial : 8 Sample Multiplier: 1

Instrument :
 MSVOA_Y
ClientSampleId :
 LAYDOWN-YARD-2

Quant Time: Oct 14 04:17:45 2025
 Quant Method : Z:\voasrv\HPCHEM1\MSVOA_Y\methods\82Y100725S.M
 Quant Title : SW846 8260
 QLast Update : Wed Oct 08 05:12:50 2025
 Response via : Initial Calibration

Compound	R.T.	QIon	Response	Conc	Units	Dev(Min)

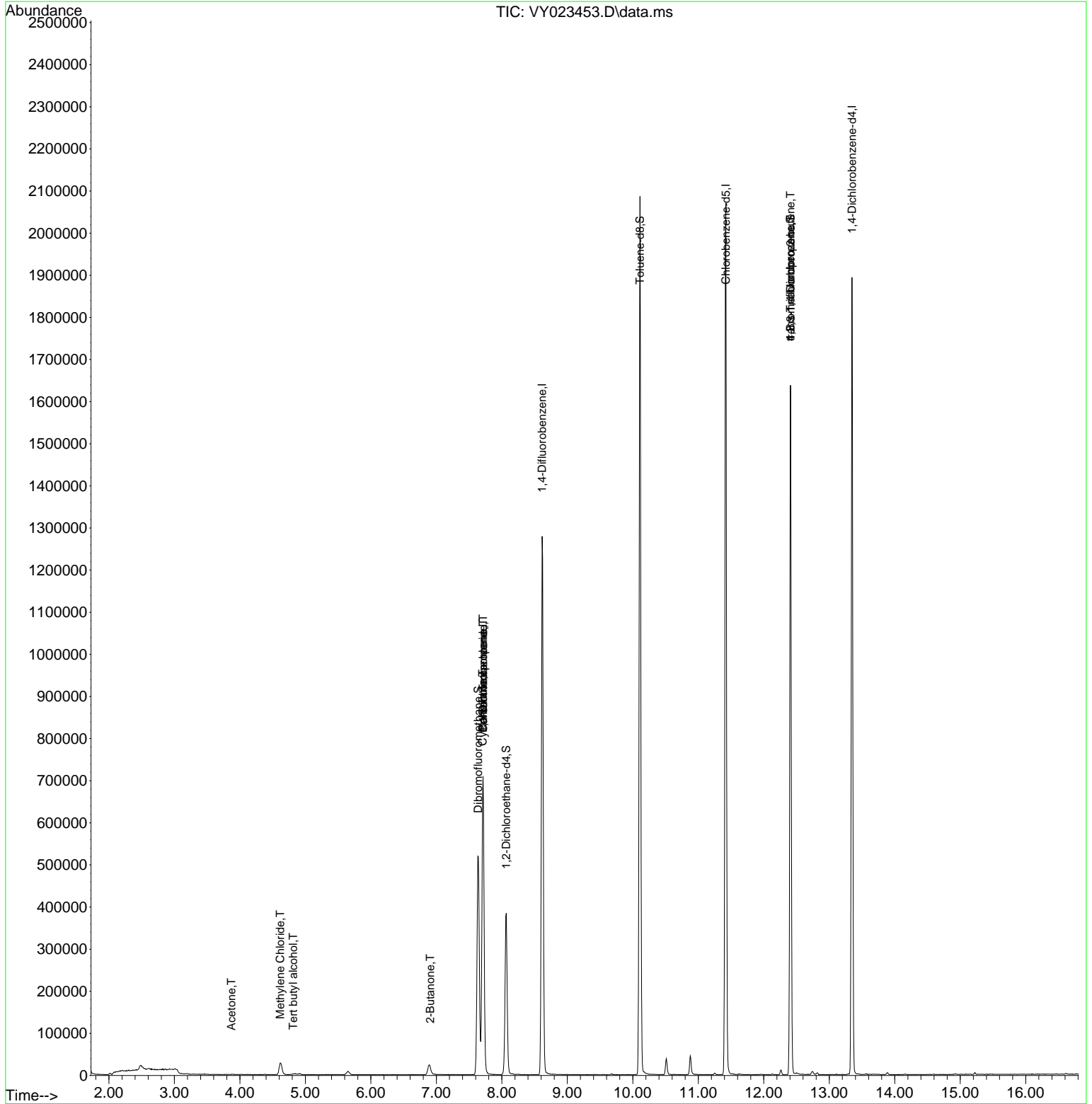
Internal Standards						
1) Pentafluorobenzene	7.713	168	595232	50.000	ug/l	0.00
34) 1,4-Difluorobenzene	8.616	114	1156748	50.000	ug/l	0.00
63) Chlorobenzene-d5	11.420	117	1163890	50.000	ug/l	0.00
72) 1,4-Dichlorobenzene-d4	13.346	152	512823	50.000	ug/l	0.00
System Monitoring Compounds						
33) 1,2-Dichloroethane-d4	8.067	65	299183	60.108	ug/l	0.00
Spiked Amount	50.000	Range	50 - 163	Recovery	=	120.220%
35) Dibromofluoromethane	7.640	113	379320	53.368	ug/l	0.00
Spiked Amount	50.000	Range	54 - 147	Recovery	=	106.740%
50) Toluene-d8	10.109	98	1376843	52.016	ug/l	0.00
Spiked Amount	50.000	Range	58 - 134	Recovery	=	104.040%
62) 4-Bromofluorobenzene	12.408	95	467633	53.511	ug/l	0.00
Spiked Amount	50.000	Range	30 - 143	Recovery	=	107.020%
Target Compounds						
						Qvalue
11) Tert butyl alcohol	4.811	59	1064	2.873	ug/l #	72
16) Acetone	3.873	43	1382	1.166	ug/l #	84
20) Methylene Chloride	4.616	84	22672	3.538	ug/l	93
25) 2-Butanone	6.909	43	1659	1.147	ug/l #	40
31) Cyclohexane	7.707	56	10573	1.277	ug/l #	1
36) 1,1-Dichloropropene	7.713	75	39145	4.160	ug/l #	47
38) Carbon Tetrachloride	7.713	117	53751	4.711	ug/l #	17
76) 1,2,3-Trichloropropane	12.408	75	228061	50.406	ug/l #	100
81) trans-1,4-Dichloro-2-b...	12.408	75	228061	123.605	ug/l #	15

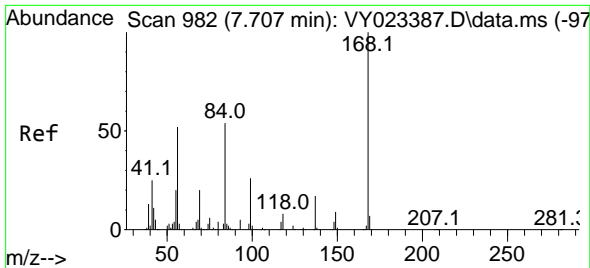
(#) = qualifier out of range (m) = manual integration (+) = signals summed

Data Path : Z:\voasrv\HPCHEM1\MSVOA_Y\Data\VY101325\
 Data File : VY023453.D
 Acq On : 13 Oct 2025 15:29
 Operator : SY/MD
 Sample : Q3337-03
 Misc : 5.00g/5.0mL/MSVOA_Y/SOIL/A
 ALS Vial : 8 Sample Multiplier: 1

Instrument :
 MSVOA_Y
ClientSampleId :
 LAYDOWN-YARD-2

Quant Time: Oct 14 04:17:45 2025
 Quant Method : Z:\voasrv\HPCHEM1\MSVOA_Y\methods\82Y100725S.M
 Quant Title : SW846 8260
 QLast Update : Wed Oct 08 05:12:50 2025
 Response via : Initial Calibration

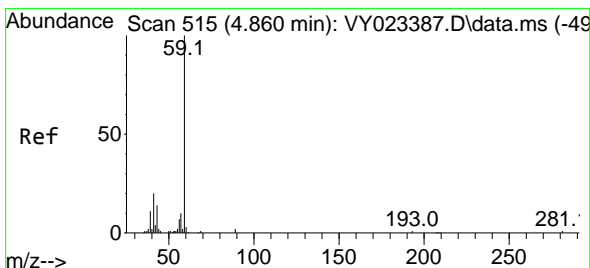
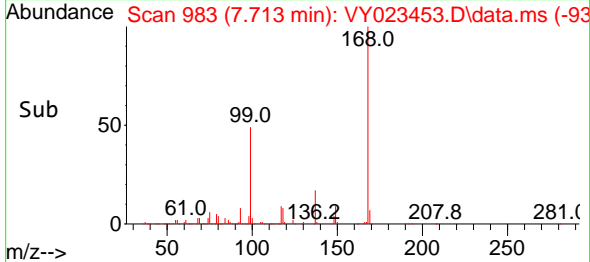
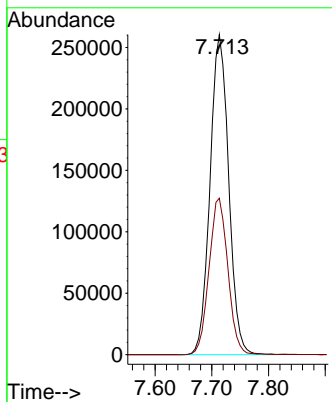
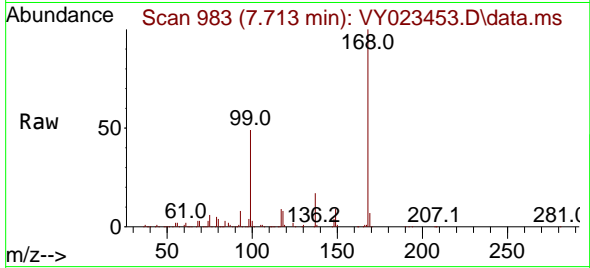




#1
 Pentafluorobenzene
 Concen: 50.000 ug/l
 RT: 7.713 min Scan# 91
 Delta R.T. 0.006 min
 Lab File: VY023453.D
 Acq: 13 Oct 2025 15:29

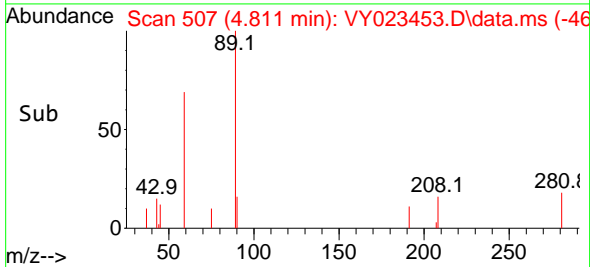
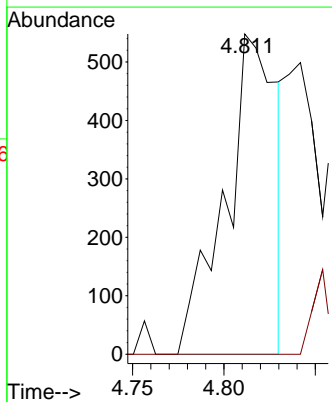
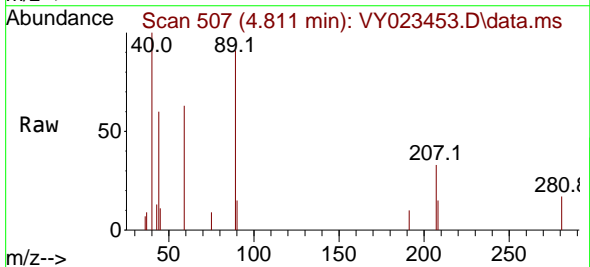
Instrument : MSVOA_Y
 ClientSampleId : LAYDOWN-YARD-2

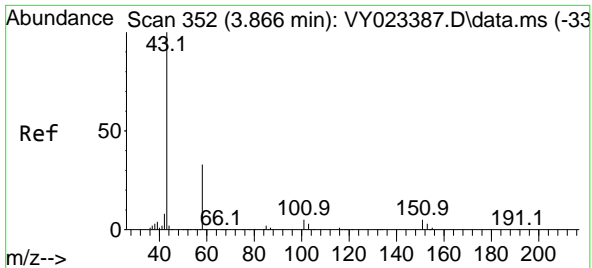
Tgt Ion:168 Resp: 595232
 Ion Ratio Lower Upper
 168 100
 99 48.9 39.7 59.5



#11
 Tert butyl alcohol
 Concen: 2.873 ug/l
 RT: 4.811 min Scan# 507
 Delta R.T. -0.049 min
 Lab File: VY023453.D
 Acq: 13 Oct 2025 15:29

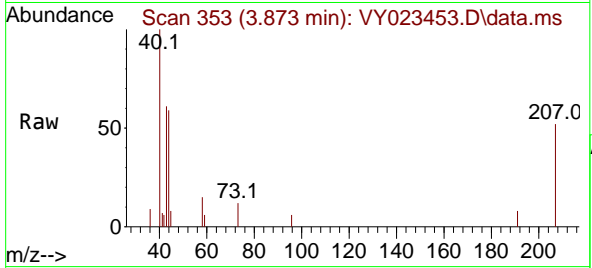
Tgt Ion: 59 Resp: 1064
 Ion Ratio Lower Upper
 59 100
 57 0.0 8.3 12.5#



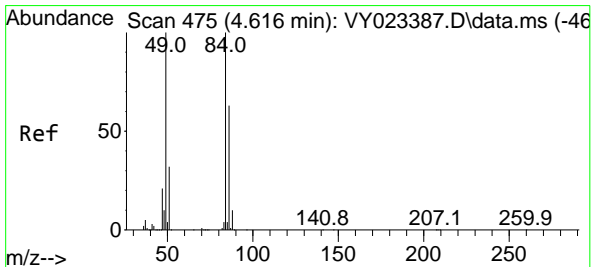
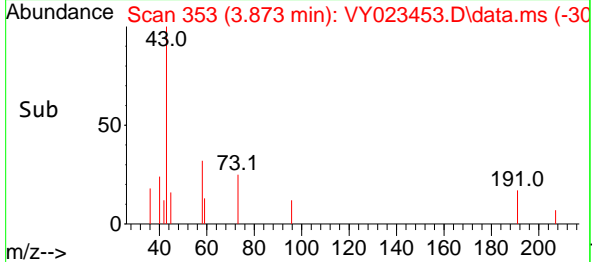
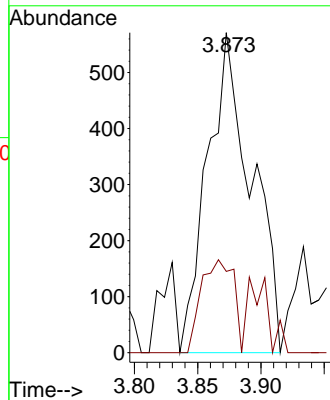


#16
 Acetone
 Concen: 1.166 ug/l
 RT: 3.873 min Scan# 31
 Delta R.T. 0.006 min
 Lab File: VY023453.D
 Acq: 13 Oct 2025 15:29

Instrument :
 MSVOA_Y
 ClientSampleId :
 LAYDOWN-YARD-2

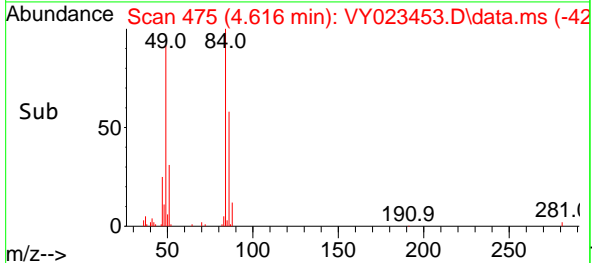
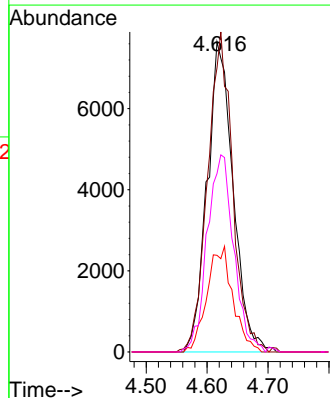
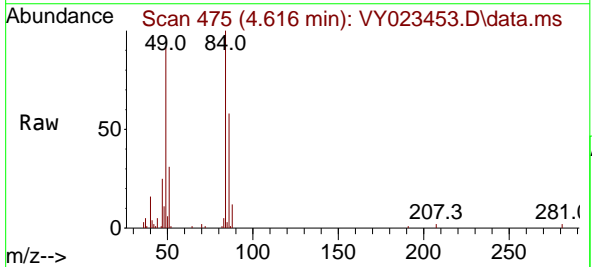


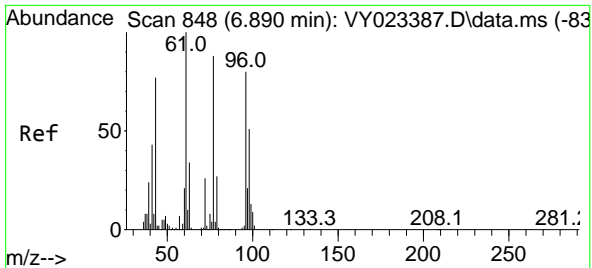
Tgt Ion: 43 Resp: 1382
 Ion Ratio Lower Upper
 43 100
 58 25.4 27.7 41.5#



#20
 Methylene Chloride
 Concen: 3.538 ug/l
 RT: 4.616 min Scan# 475
 Delta R.T. -0.000 min
 Lab File: VY023453.D
 Acq: 13 Oct 2025 15:29

Tgt Ion: 84 Resp: 22672
 Ion Ratio Lower Upper
 84 100
 49 91.6 80.2 120.4
 51 31.2 25.9 38.9
 86 57.5 50.6 75.8

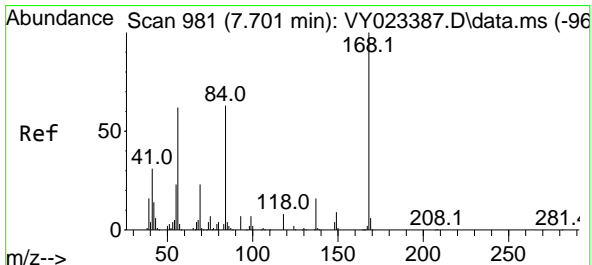
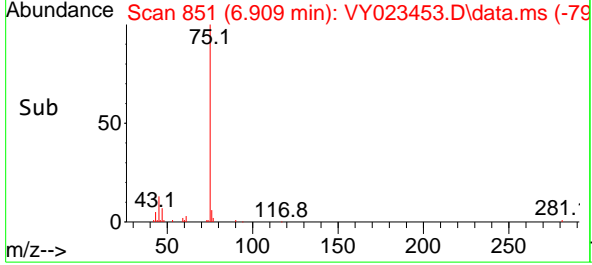
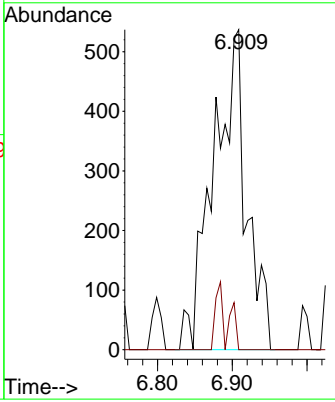
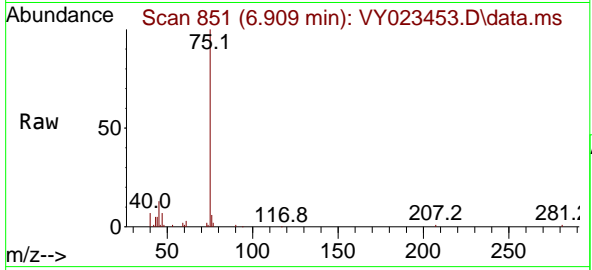




#25
 2-Butanone
 Concen: 1.147 ug/l
 RT: 6.909 min Scan# 81
 Delta R.T. 0.018 min
 Lab File: VY023453.D
 Acq: 13 Oct 2025 15:29

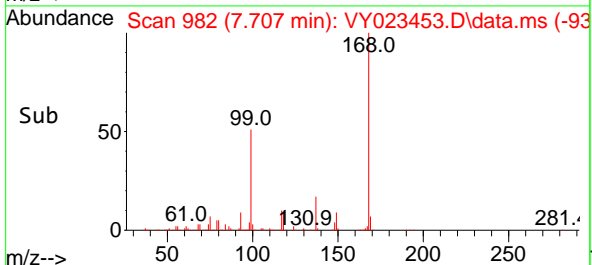
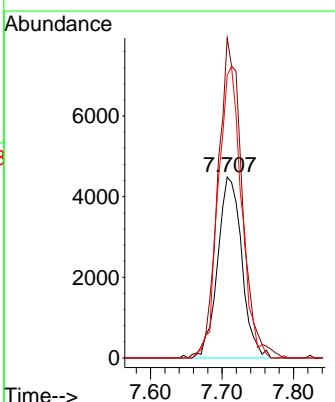
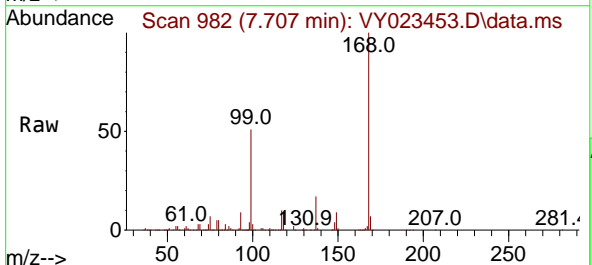
Instrument : MSVOA_Y
 ClientSampleId : LAYDOWN-YARD-2

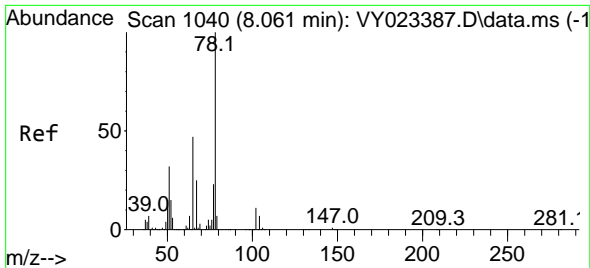
Tgt Ion: 43 Resp: 1659
 Ion Ratio Lower Upper
 43 100
 72 0.0 27.4 41.2#



#31
 Cyclohexane
 Concen: 1.277 ug/l
 RT: 7.707 min Scan# 982
 Delta R.T. 0.006 min
 Lab File: VY023453.D
 Acq: 13 Oct 2025 15:29

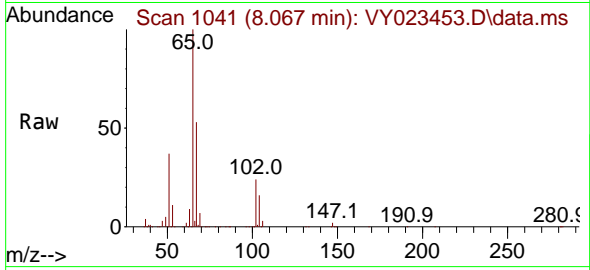
Tgt Ion: 56 Resp: 10573
 Ion Ratio Lower Upper
 56 100
 69 176.8 30.0 45.0#
 84 156.2 81.2 121.8#



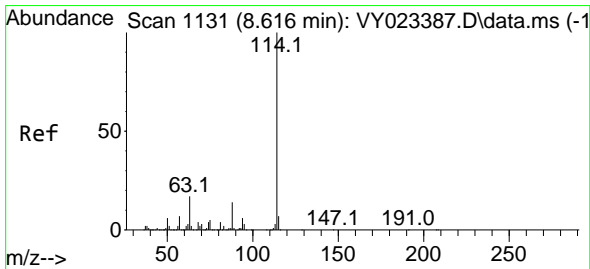
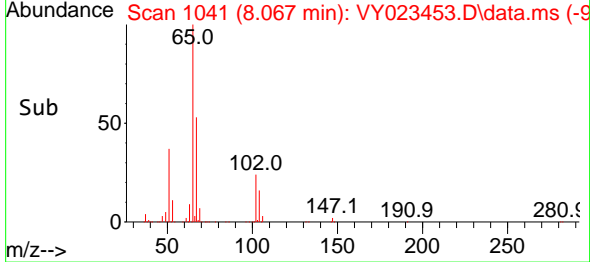
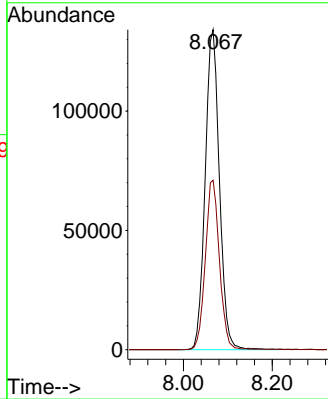


#33
 1,2-Dichloroethane-d4
 Concen: 60.108 ug/l
 RT: 8.067 min Scan# 1041
 Delta R.T. 0.006 min
 Lab File: VY023453.D
 Acq: 13 Oct 2025 15:29

Instrument : MSVOA_Y
 ClientSampleId : LAYDOWN-YARD-2

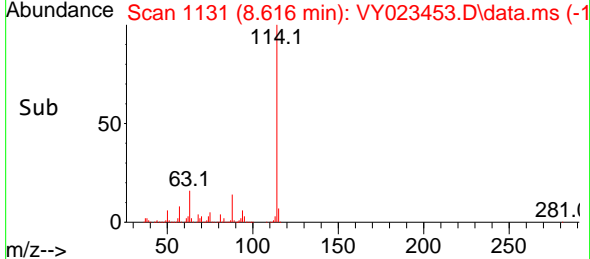
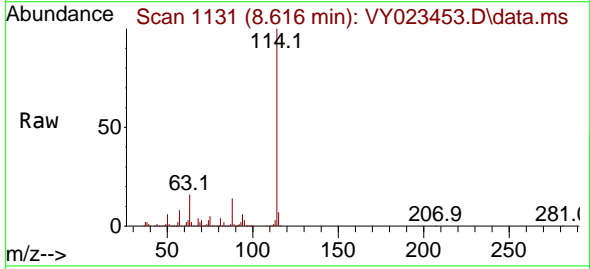
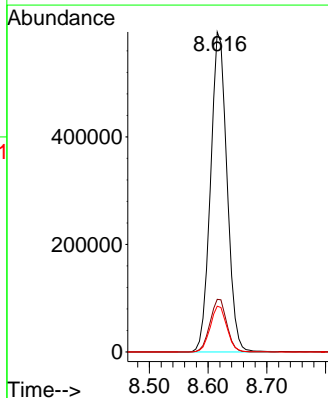


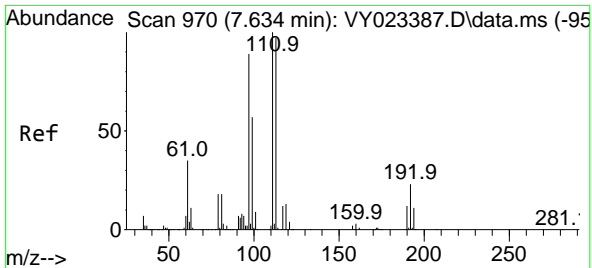
Tgt Ion: 65 Resp: 299183
 Ion Ratio Lower Upper
 65 100
 67 52.6 0.0 105.8



#34
 1,4-Difluorobenzene
 Concen: 50.000 ug/l
 RT: 8.616 min Scan# 1131
 Delta R.T. -0.000 min
 Lab File: VY023453.D
 Acq: 13 Oct 2025 15:29

Tgt Ion:114 Resp: 1156748
 Ion Ratio Lower Upper
 114 100
 63 16.5 0.0 34.2
 88 14.3 0.0 28.4



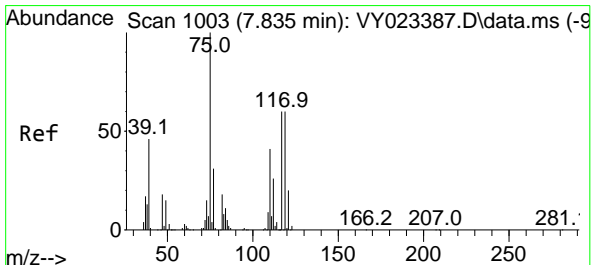
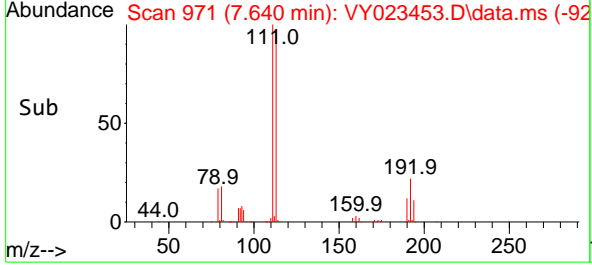
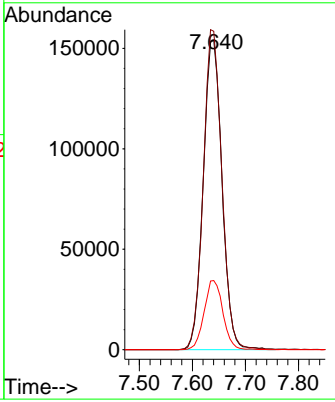
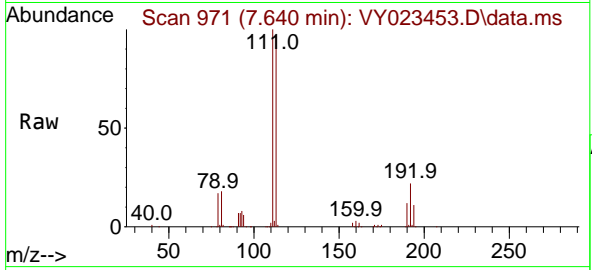


#35
 Dibromofluoromethane
 Concen: 53.368 ug/l
 RT: 7.640 min Scan# 91
 Delta R.T. 0.006 min
 Lab File: VY023453.D
 Acq: 13 Oct 2025 15:29

Instrument : MSVOA_Y
 ClientSampleId : LAYDOWN-YARD-2

Tgt Ion:113 Resp: 379320

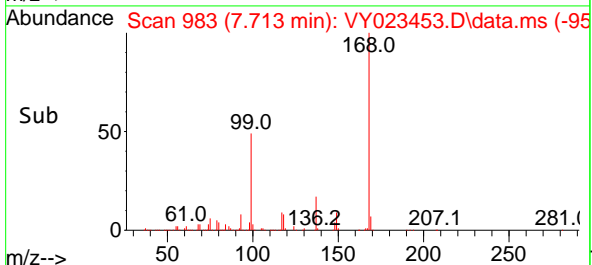
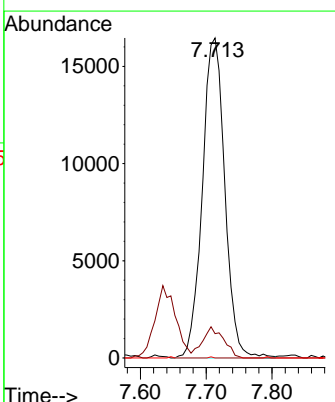
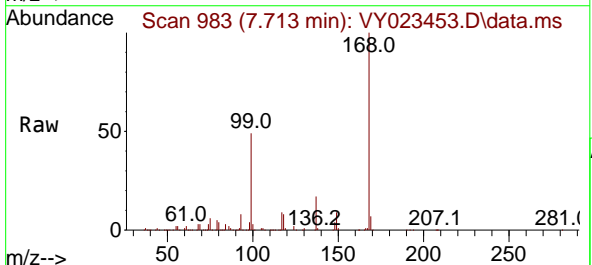
Ion	Ratio	Lower	Upper
113	100		
111	102.0	81.8	122.6
192	22.3	18.0	27.0

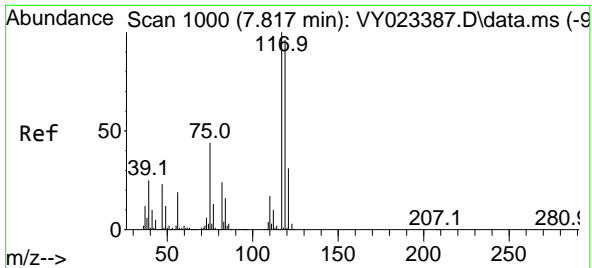


#36
 1,1-Dichloropropene
 Concen: 4.160 ug/l
 RT: 7.713 min Scan# 983
 Delta R.T. -0.122 min
 Lab File: VY023453.D
 Acq: 13 Oct 2025 15:29

Tgt Ion: 75 Resp: 39145

Ion	Ratio	Lower	Upper
75	100		
110	9.2	19.9	59.7#
77	0.1	25.0	37.6#

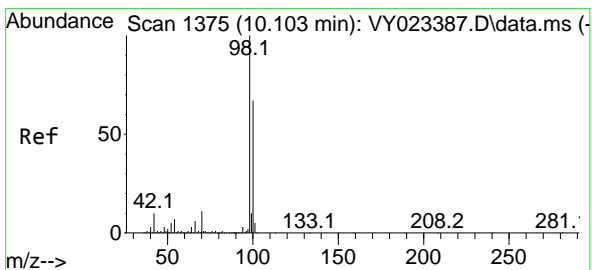
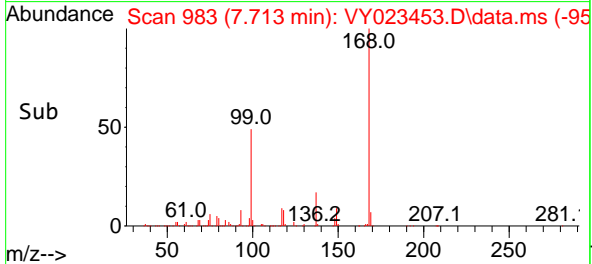
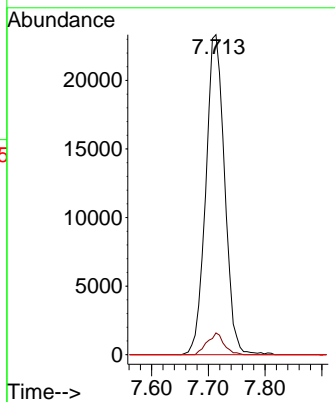
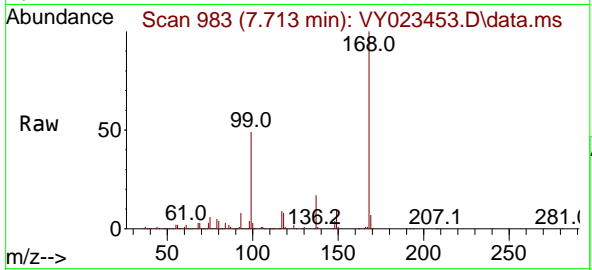




#38
 Carbon Tetrachloride
 Concen: 4.711 ug/l
 RT: 7.713 min Scan# 91
 Delta R.T. -0.104 min
 Lab File: VY023453.D
 Acq: 13 Oct 2025 15:29

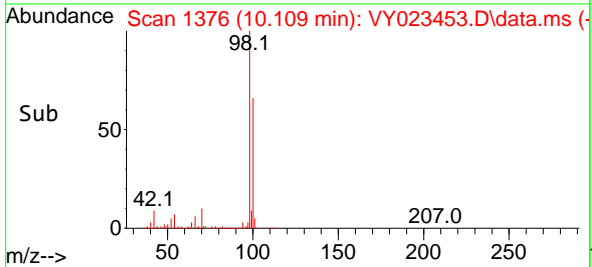
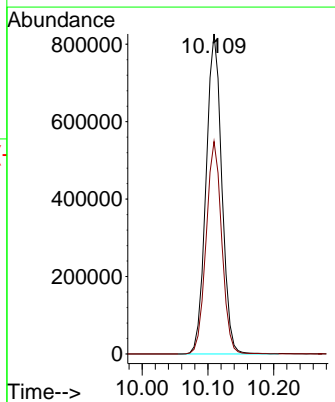
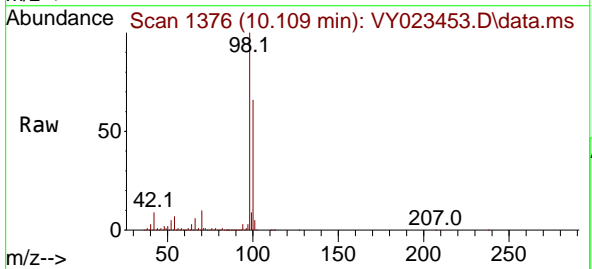
Instrument : MSVOA_Y
 ClientSampleId : LAYDOWN-YARD-2

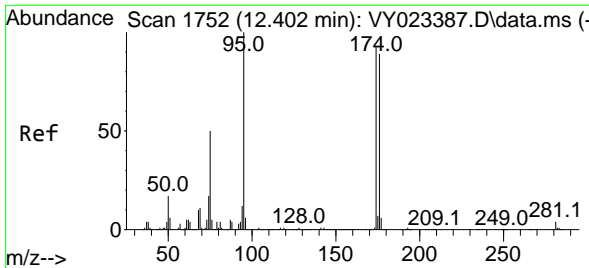
Tgt Ion	Resp	Lower	Upper
117	53751		
117	100		
119	6.8	76.8	115.2#
121	0.0	24.5	36.7#



#50
 Toluene-d8
 Concen: 52.016 ug/l
 RT: 10.109 min Scan# 1376
 Delta R.T. 0.006 min
 Lab File: VY023453.D
 Acq: 13 Oct 2025 15:29

Tgt Ion	Resp	Lower	Upper
98	1376843		
98	100		
100	65.8	53.0	79.4



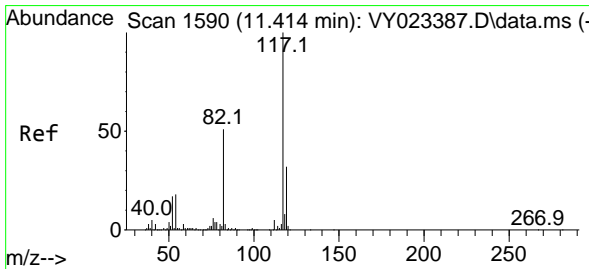
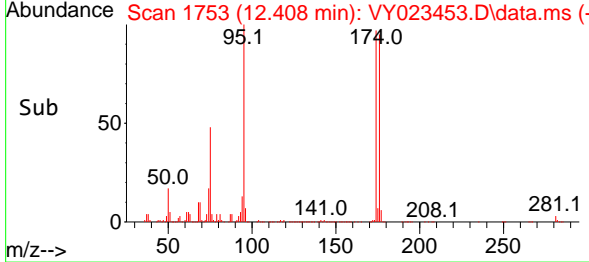
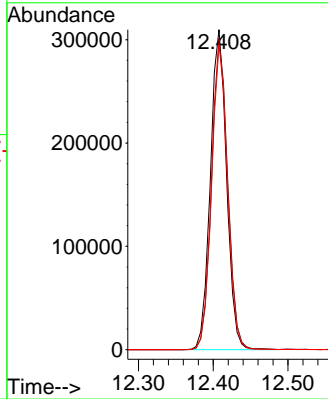
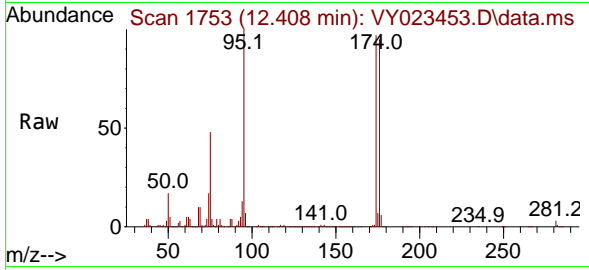


#62
 4-Bromofluorobenzene
 Concen: 53.511 ug/l
 RT: 12.408 min Scan# 11
 Delta R.T. 0.006 min
 Lab File: VY023453.D
 Acq: 13 Oct 2025 15:29

Instrument :
 MSVOA_Y
 ClientSampleId :
 LAYDOWN-YARD-2

Tgt Ion: 95 Resp: 467633

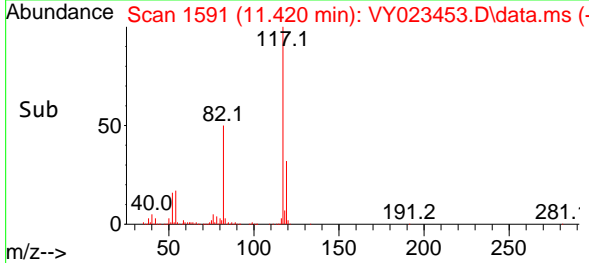
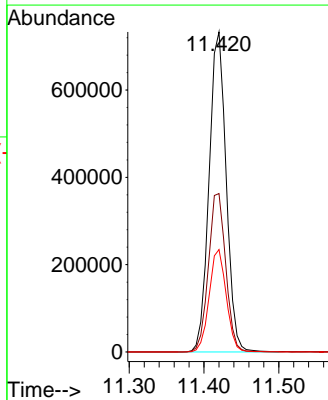
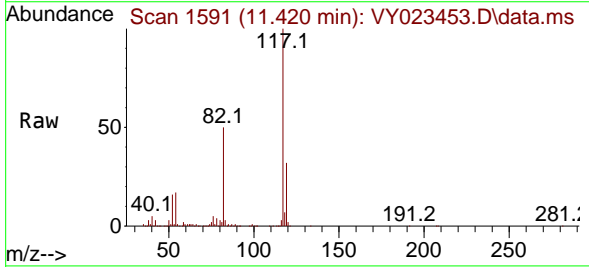
Ion	Ratio	Lower	Upper
95	100		
174	97.2	0.0	192.8
176	93.9	0.0	187.6

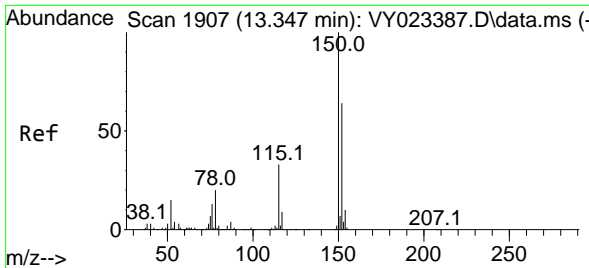


#63
 Chlorobenzene-d5
 Concen: 50.000 ug/l
 RT: 11.420 min Scan# 1591
 Delta R.T. 0.006 min
 Lab File: VY023453.D
 Acq: 13 Oct 2025 15:29

Tgt Ion: 117 Resp: 1163890

Ion	Ratio	Lower	Upper
117	100		
82	49.5	41.0	61.4
119	32.0	25.6	38.4

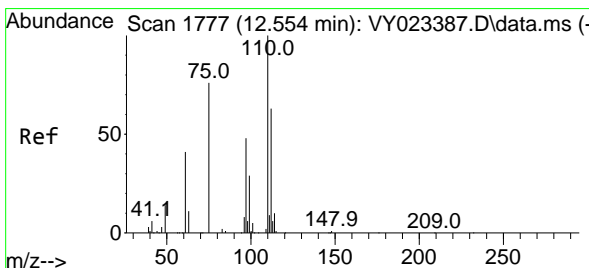
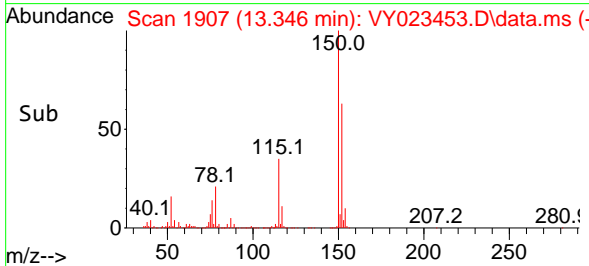
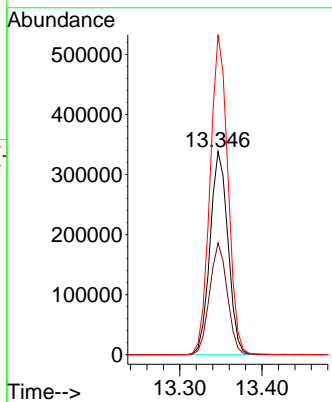
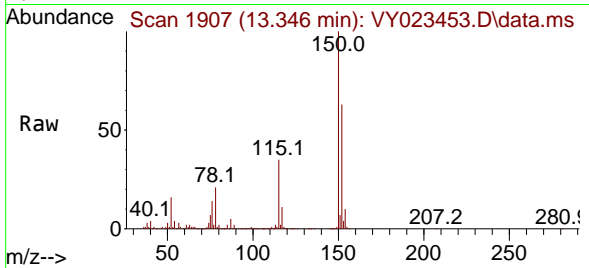




#72
 1,4-Dichlorobenzene-d4
 Concen: 50.000 ug/l
 RT: 13.346 min Scan# 1334
 Delta R.T. -0.000 min
 Lab File: VY023453.D
 Acq: 13 Oct 2025 15:29

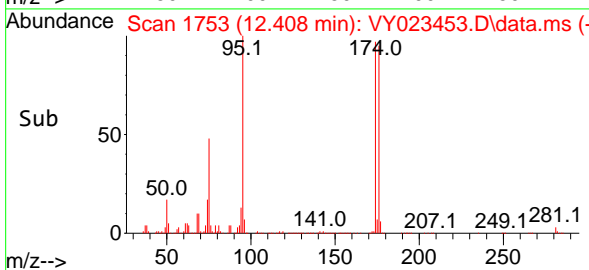
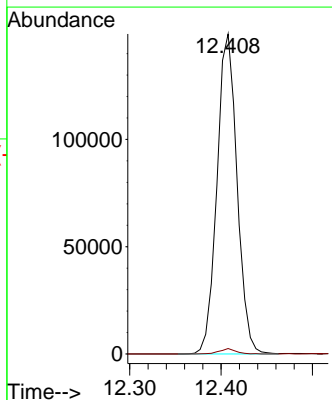
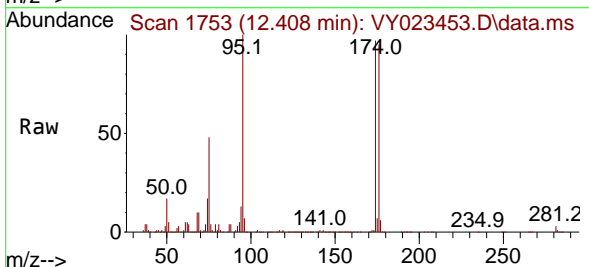
Instrument : MSVOA_Y
 ClientSampleId : LAYDOWN-YARD-2

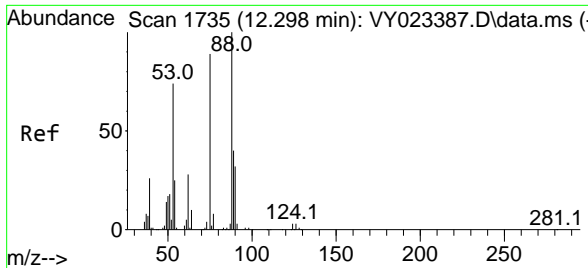
Tgt Ion	Resp	Lower	Upper
152	512823	100	
115	54.3	27.1	81.2
150	156.5	0.0	347.4



#76
 1,2,3-Trichloropropane
 Concen: 50.406 ug/l
 RT: 12.408 min Scan# 1753
 Delta R.T. -0.146 min
 Lab File: VY023453.D
 Acq: 13 Oct 2025 15:29

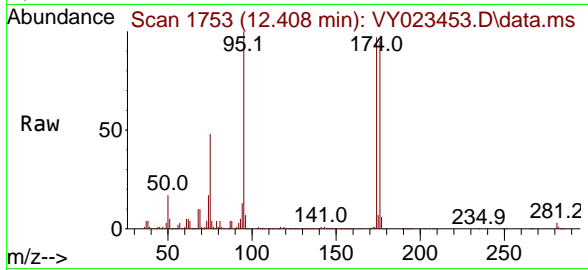
Tgt Ion	Resp	Lower	Upper
75	228061	100	
77	1.4	0.0	0.0#





#81
 trans-1,4-Dichloro-2-butene
 Concen: 123.605 ug/l
 RT: 12.408 min Scan# 1
 Delta R.T. 0.110 min
 Lab File: VY023453.D
 Acq: 13 Oct 2025 15:29

Instrument :
 MSVOA_Y
 ClientSampleId :
 LAYDOWN-YARD-2



Tgt Ion: 75 Resp: 228061

Ion	Ratio	Lower	Upper
75	100		
53	0.1	68.6	102.8#
89	0.0	39.0	58.4#

