

Data Path : Z:\voasrv\HPCHEM1\MSVOA\_Y\Data\VY101325\  
 Data File : VY023454.D  
 Acq On : 13 Oct 2025 15:52  
 Operator : SY/MD  
 Sample : VIBLK  
 Misc : 5.00g/5.0mL/MSVOA\_Y/SOIL  
 ALS Vial : 9 Sample Multiplier: 1

Instrument :  
 MSVOA\_Y  
 ClientSampleId :  
 VIBLK

Quant Time: Oct 14 04:18:02 2025  
 Quant Method : Z:\voasrv\HPCHEM1\MSVOA\_Y\methods\82Y100725S.M  
 Quant Title : SW846 8260  
 QLast Update : Wed Oct 08 05:12:50 2025  
 Response via : Initial Calibration

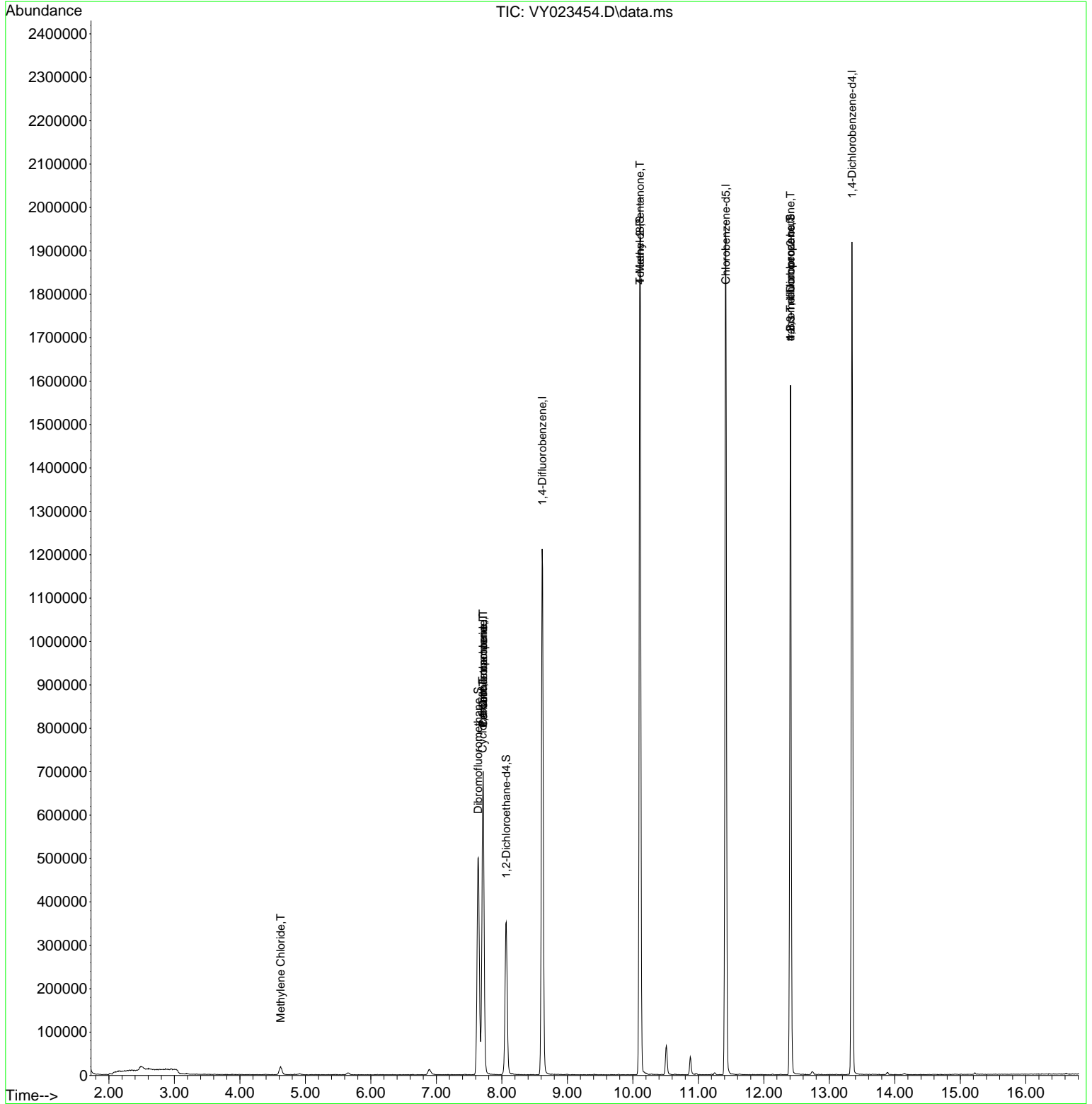
Compound	R.T.	QIon	Response	Conc	Units	Dev(Min)
-----						
Internal Standards						
1) Pentafluorobenzene	7.713	168	576560	50.000	ug/l	0.00
34) 1,4-Difluorobenzene	8.615	114	1117627	50.000	ug/l	0.00
63) Chlorobenzene-d5	11.420	117	1140237	50.000	ug/l	0.00
72) 1,4-Dichlorobenzene-d4	13.346	152	512322	50.000	ug/l	0.00
System Monitoring Compounds						
33) 1,2-Dichloroethane-d4	8.067	65	275791	57.203	ug/l	0.00
Spiked Amount	50.000	Range	50 - 163	Recovery	=	114.400%
35) Dibromofluoromethane	7.640	113	364504	53.078	ug/l	0.00
Spiked Amount	50.000	Range	54 - 147	Recovery	=	106.160%
50) Toluene-d8	10.109	98	1353564	52.926	ug/l	0.00
Spiked Amount	50.000	Range	58 - 134	Recovery	=	105.860%
62) 4-Bromofluorobenzene	12.408	95	460783	54.573	ug/l	0.00
Spiked Amount	50.000	Range	30 - 143	Recovery	=	109.140%
Target Compounds						
					Qvalue	
20) Methylene Chloride	4.622	84	14303	2.304	ug/l	95
31) Cyclohexane	7.707	56	9622	1.200	ug/l #	13
36) 1,1-Dichloropropene	7.713	75	38792	4.267	ug/l #	47
38) Carbon Tetrachloride	7.713	117	51594	4.680	ug/l #	16
51) 4-Methyl-2-Pentanone	10.109	43	4824	1.300	ug/l #	1
76) 1,2,3-Trichloropropane	12.408	75	225016	49.782	ug/l #	100
81) trans-1,4-Dichloro-2-b...	12.408	75	225016	122.074	ug/l #	14

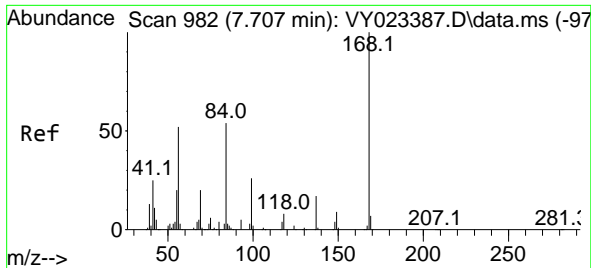
(#) = qualifier out of range (m) = manual integration (+) = signals summed

Data Path : Z:\voasrv\HPCHEM1\MSVOA\_Y\Data\VY101325\  
 Data File : VY023454.D  
 Acq On : 13 Oct 2025 15:52  
 Operator : SY/MD  
 Sample : VIBLK  
 Misc : 5.00g/5.0mL/MSVOA\_Y/SOIL  
 ALS Vial : 9 Sample Multiplier: 1

**Instrument :**  
 MSVOA\_Y  
**ClientSampleId :**  
 VIBLK

Quant Time: Oct 14 04:18:02 2025  
 Quant Method : Z:\voasrv\HPCHEM1\MSVOA\_Y\methods\82Y100725S.M  
 Quant Title : SW846 8260  
 QLast Update : Wed Oct 08 05:12:50 2025  
 Response via : Initial Calibration

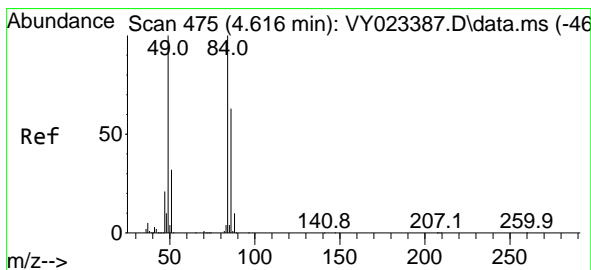
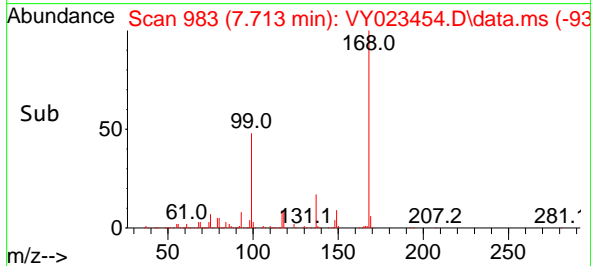
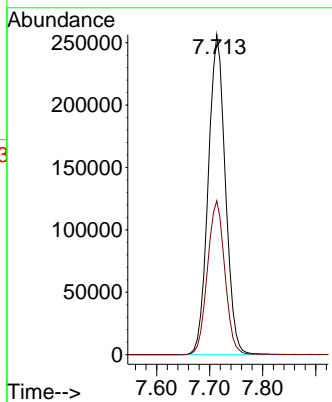
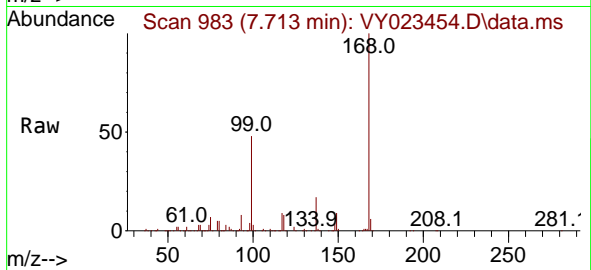




#1  
 Pentafluorobenzene  
 Concen: 50.000 ug/l  
 RT: 7.713 min Scan# 982  
 Delta R.T. 0.006 min  
 Lab File: VY023454.D  
 Acq: 13 Oct 2025 15:52

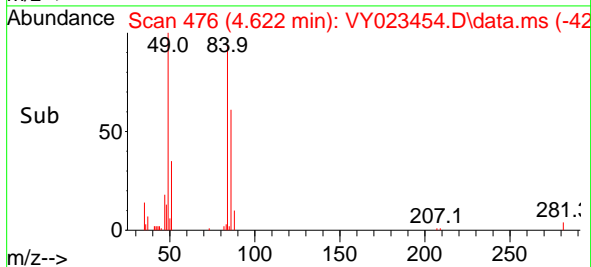
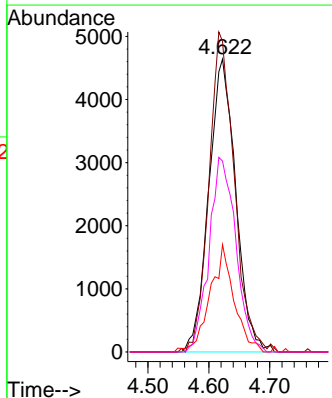
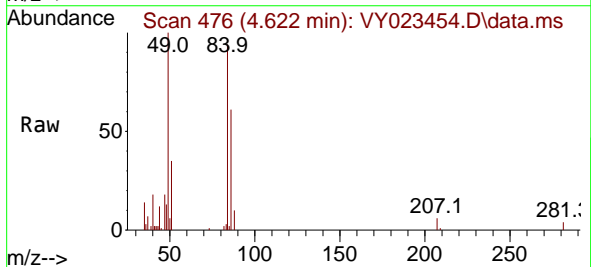
Instrument :  
 MSVOA\_Y  
 ClientSampleId :  
 VIBLK

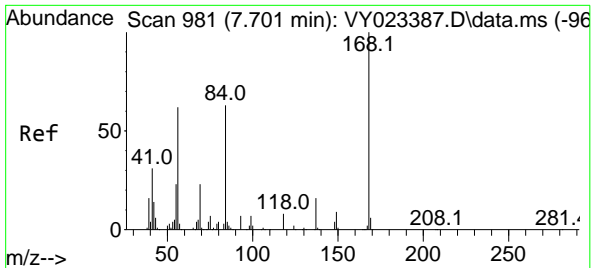
Tgt Ion:168 Resp: 576560  
 Ion Ratio Lower Upper  
 168 100  
 99 48.1 39.7 59.5



#20  
 Methylene Chloride  
 Concen: 2.304 ug/l  
 RT: 4.622 min Scan# 476  
 Delta R.T. 0.006 min  
 Lab File: VY023454.D  
 Acq: 13 Oct 2025 15:52

Tgt Ion: 84 Resp: 14303  
 Ion Ratio Lower Upper  
 84 100  
 49 106.1 80.2 120.4  
 51 36.7 25.9 38.9  
 86 65.2 50.6 75.8



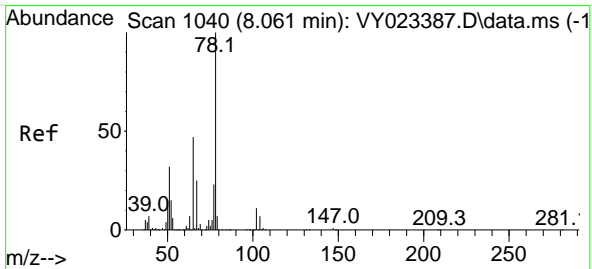
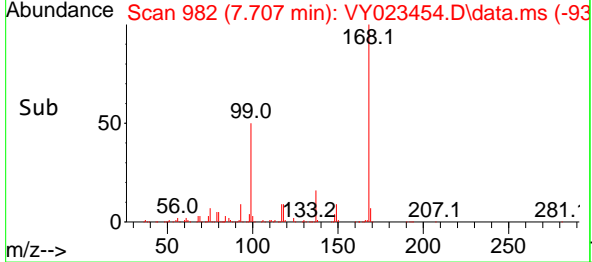
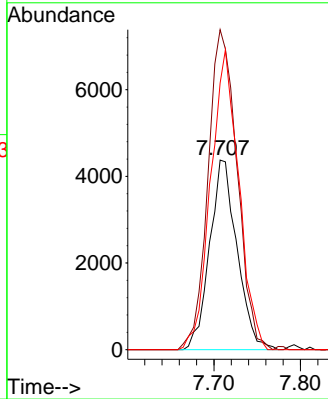
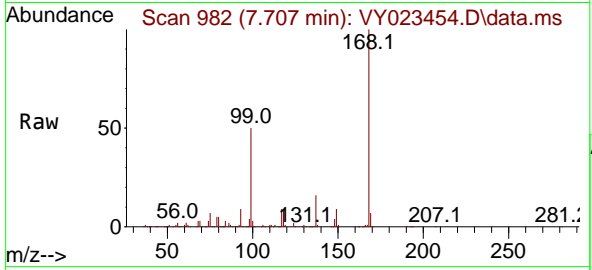


#31  
 Cyclohexane  
 Concen: 1.200 ug/l  
 RT: 7.707 min Scan# 91  
 Delta R.T. 0.006 min  
 Lab File: VY023454.D  
 Acq: 13 Oct 2025 15:52

Instrument :  
 MSVOA\_Y  
 ClientSampleId :  
 VIBLK

Tgt Ion: 56 Resp: 9622

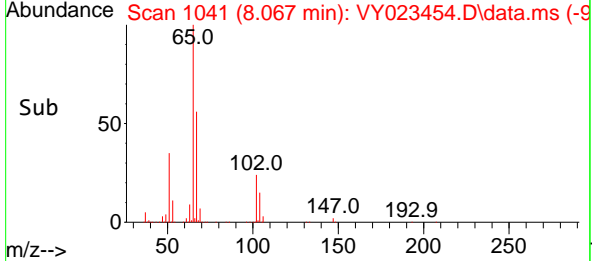
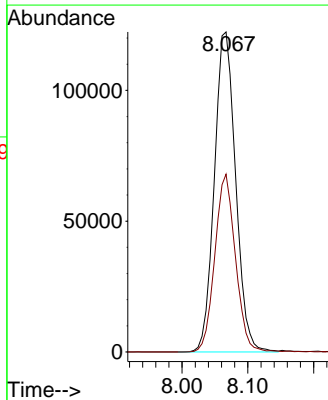
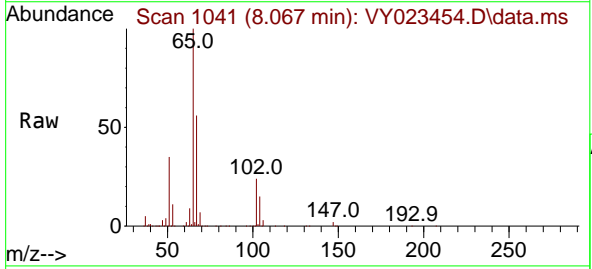
Ion	Ratio	Lower	Upper
56	100		
69	168.7	30.0	45.0#
84	140.5	81.2	121.8#

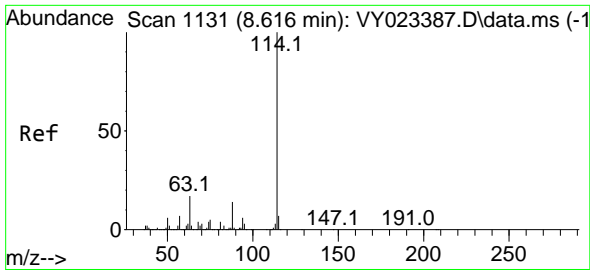


#33  
 1,2-Dichloroethane-d4  
 Concen: 57.203 ug/l  
 RT: 8.067 min Scan# 1041  
 Delta R.T. 0.006 min  
 Lab File: VY023454.D  
 Acq: 13 Oct 2025 15:52

Tgt Ion: 65 Resp: 275791

Ion	Ratio	Lower	Upper
65	100		
67	53.7	0.0	105.8



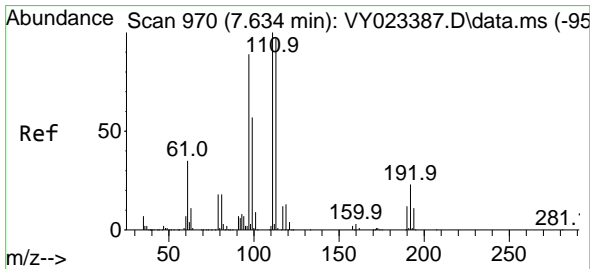
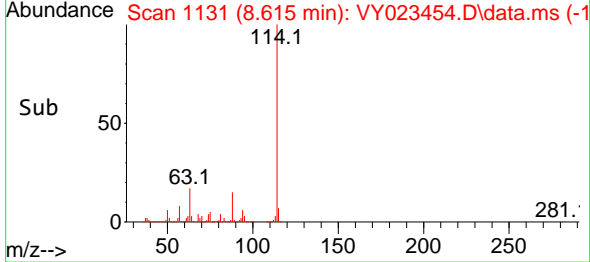
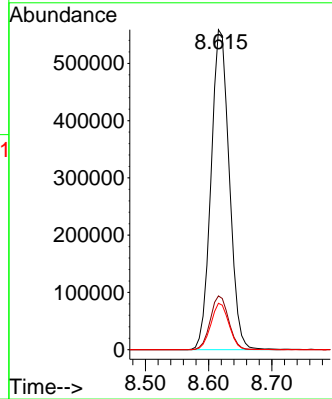
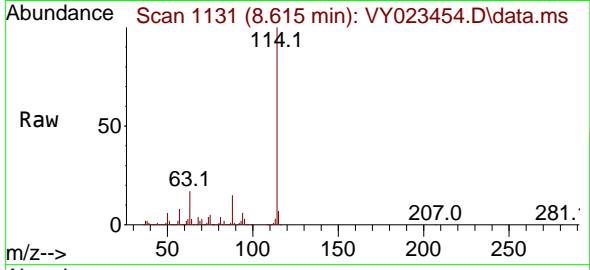


#34  
 1,4-Difluorobenzene  
 Concen: 50.000 ug/l  
 RT: 8.615 min Scan# 1111  
 Delta R.T. -0.000 min  
 Lab File: VY023454.D  
 Acq: 13 Oct 2025 15:52

Instrument :  
 MSVOA\_Y  
 ClientSampleId :  
 VIBLK

Tgt Ion:114 Resp: 1117627

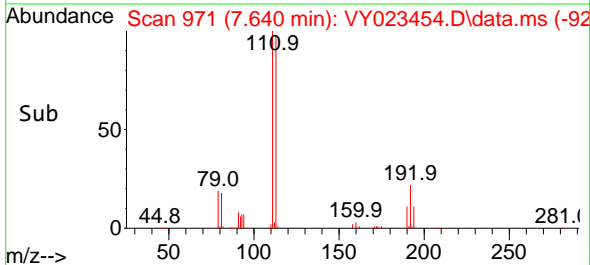
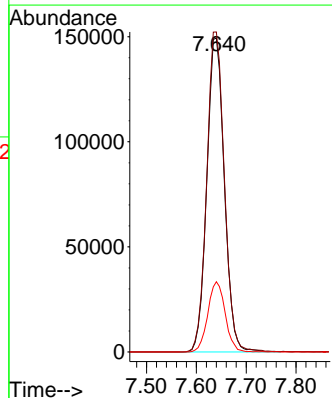
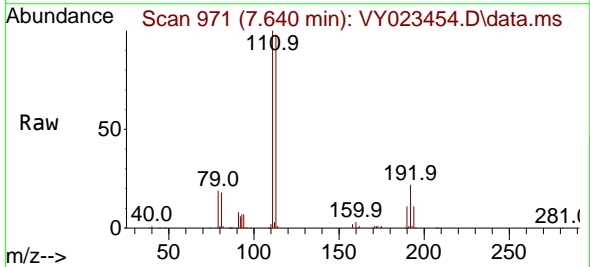
Ion	Ratio	Lower	Upper
114	100		
63	16.8	0.0	34.2
88	14.5	0.0	28.4

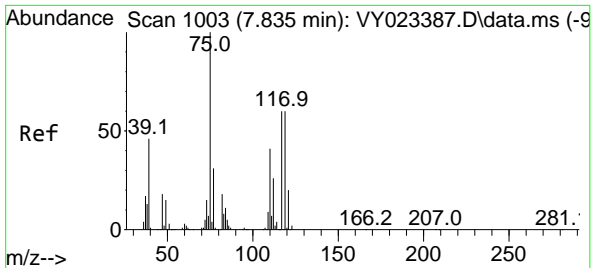


#35  
 Dibromofluoromethane  
 Concen: 53.078 ug/l  
 RT: 7.640 min Scan# 971  
 Delta R.T. 0.006 min  
 Lab File: VY023454.D  
 Acq: 13 Oct 2025 15:52

Tgt Ion:113 Resp: 364504

Ion	Ratio	Lower	Upper
113	100		
111	102.8	81.8	122.6
192	22.2	18.0	27.0



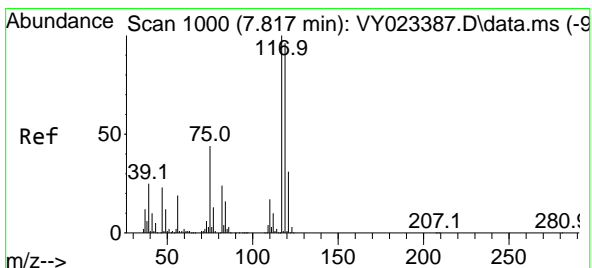
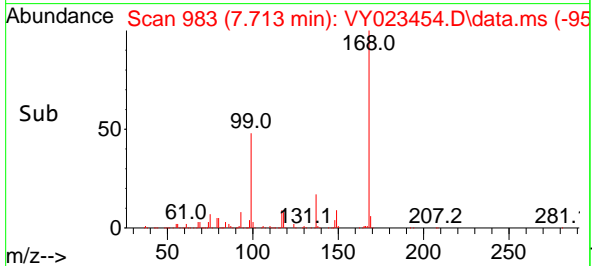
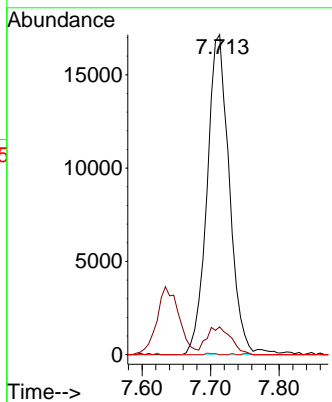
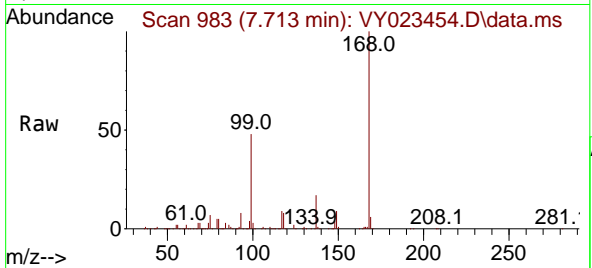


#36  
 1,1-Dichloropropene  
 Concen: 4.267 ug/l  
 RT: 7.713 min Scan# 983  
 Delta R.T. -0.122 min  
 Lab File: VY023454.D  
 Acq: 13 Oct 2025 15:52

Instrument : MSVOA\_Y  
 ClientSampleId : VIBLK

Tgt Ion: 75 Resp: 38792

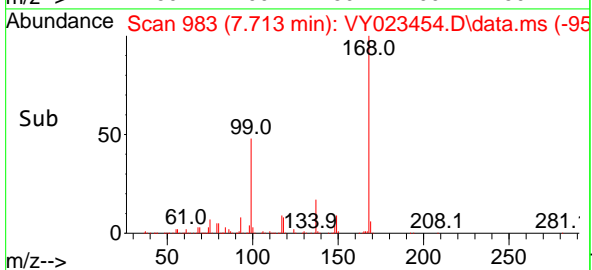
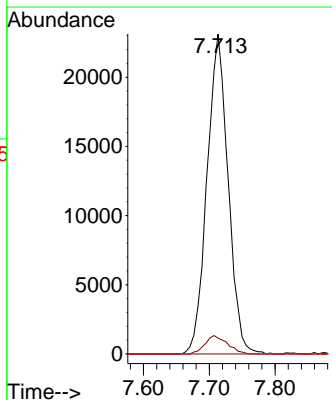
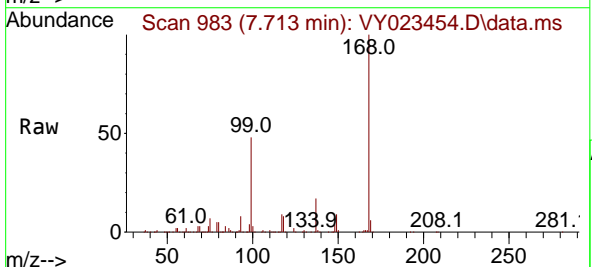
Ion	Ratio	Lower	Upper
75	100		
110	9.4	19.9	59.7#
77	0.1	25.0	37.6#

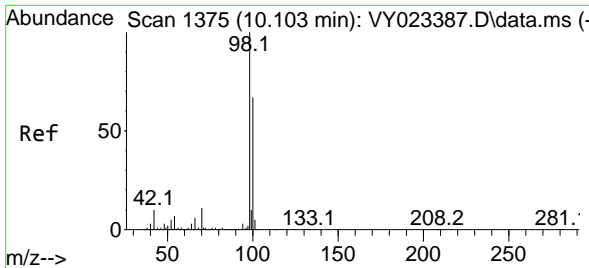


#38  
 Carbon Tetrachloride  
 Concen: 4.680 ug/l  
 RT: 7.713 min Scan# 983  
 Delta R.T. -0.104 min  
 Lab File: VY023454.D  
 Acq: 13 Oct 2025 15:52

Tgt Ion: 117 Resp: 51594

Ion	Ratio	Lower	Upper
117	100		
119	4.9	76.8	115.2#
121	0.0	24.5	36.7#

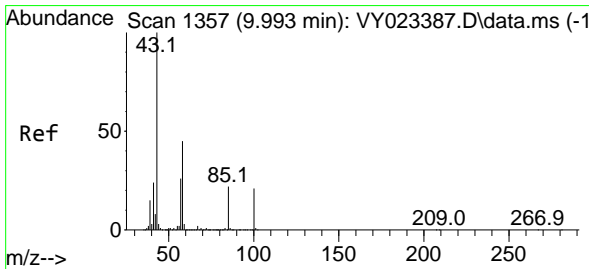
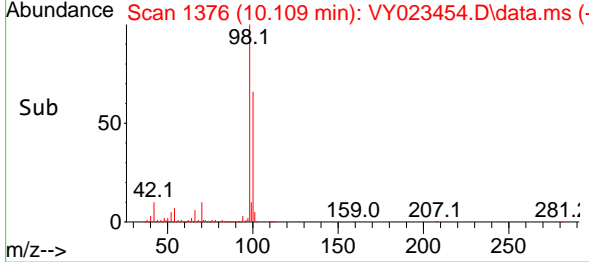
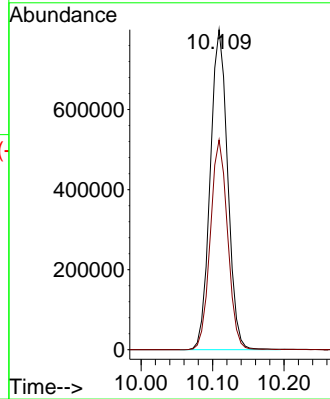
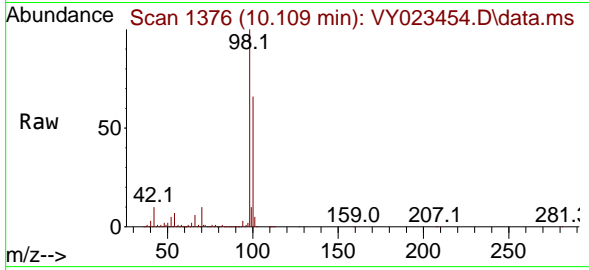




#50  
 Toluene-d8  
 Concen: 52.926 ug/l  
 RT: 10.109 min Scan# 1376  
 Delta R.T. 0.006 min  
 Lab File: VY023454.D  
 Acq: 13 Oct 2025 15:52

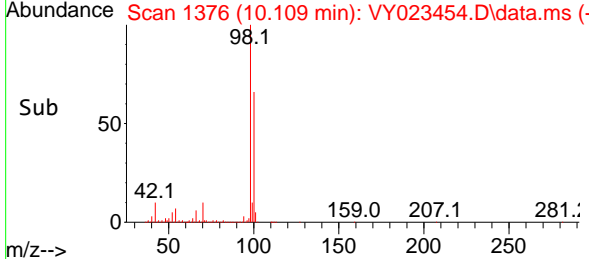
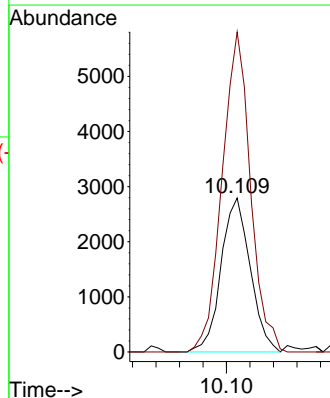
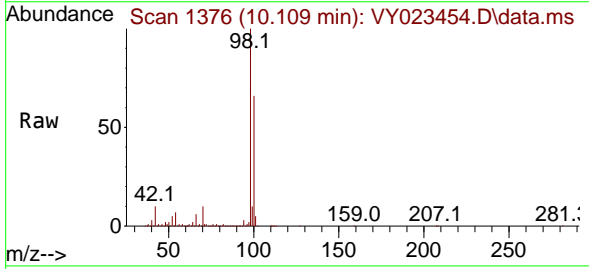
Instrument : MSVOA\_Y  
 ClientSampleId : VIBLK

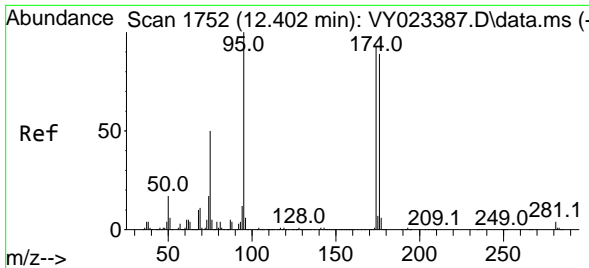
Tgt Ion: 98 Resp: 1353564  
 Ion Ratio Lower Upper  
 98 100  
 100 65.0 53.0 79.4



#51  
 4-Methyl-2-Pentanone  
 Concen: 1.300 ug/l  
 RT: 10.109 min Scan# 1376  
 Delta R.T. 0.116 min  
 Lab File: VY023454.D  
 Acq: 13 Oct 2025 15:52

Tgt Ion: 43 Resp: 4824  
 Ion Ratio Lower Upper  
 43 100  
 58 202.1 35.3 52.9#



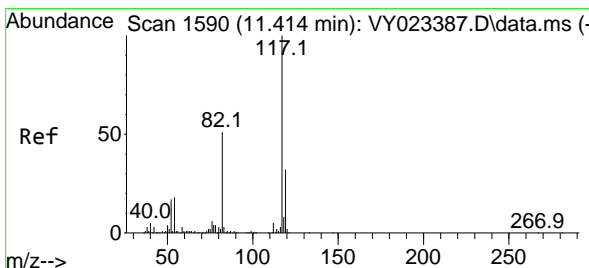
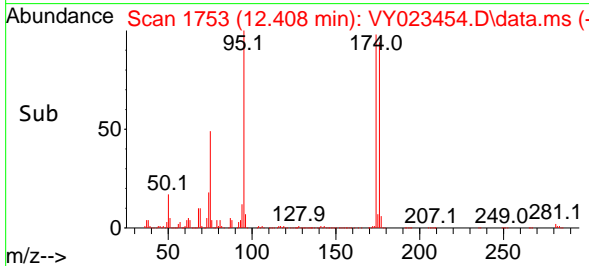
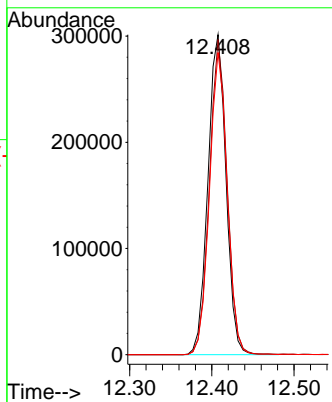
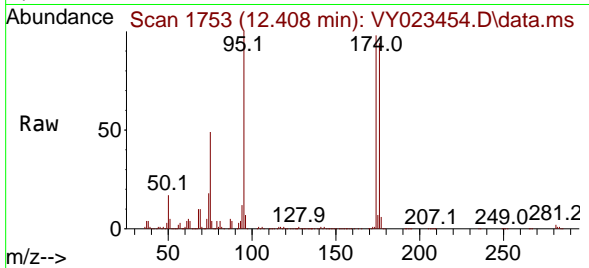


#62  
 4-Bromofluorobenzene  
 Concen: 54.573 ug/l  
 RT: 12.408 min Scan# 1753  
 Delta R.T. 0.006 min  
 Lab File: VY023454.D  
 Acq: 13 Oct 2025 15:52

Instrument :  
 MSVOA\_Y  
 ClientSampleId :  
 VIBLK

Tgt Ion: 95 Resp: 460783

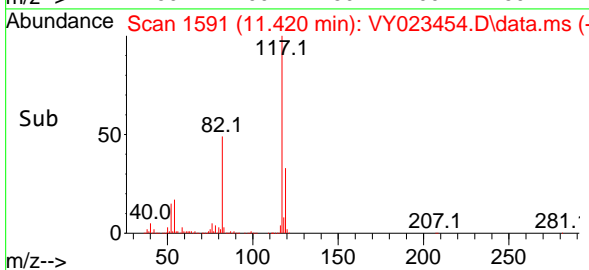
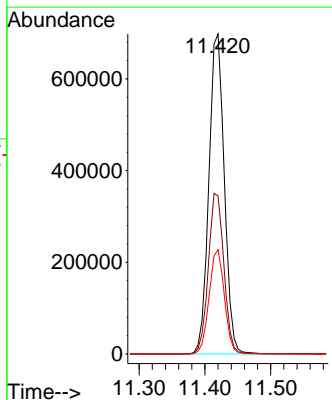
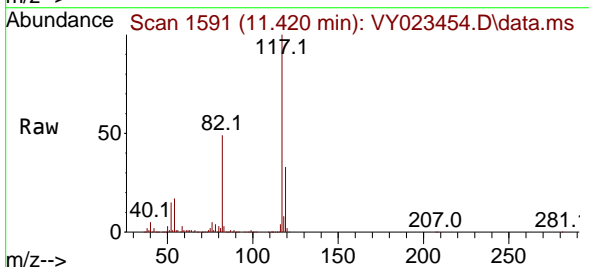
Ion	Ratio	Lower	Upper
95	100		
174	96.7	0.0	192.8
176	92.9	0.0	187.6



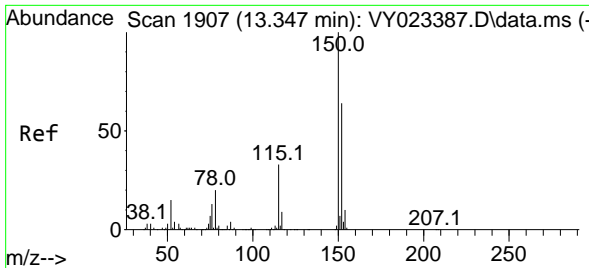
#63  
 Chlorobenzene-d5  
 Concen: 50.000 ug/l  
 RT: 11.420 min Scan# 1591  
 Delta R.T. 0.006 min  
 Lab File: VY023454.D  
 Acq: 13 Oct 2025 15:52

Tgt Ion: 117 Resp: 1140237

Ion	Ratio	Lower	Upper
117	100		
82	49.5	41.0	61.4
119	32.6	25.6	38.4



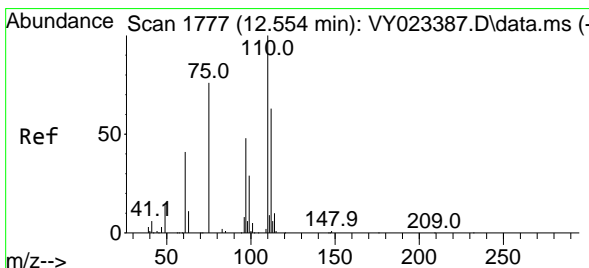
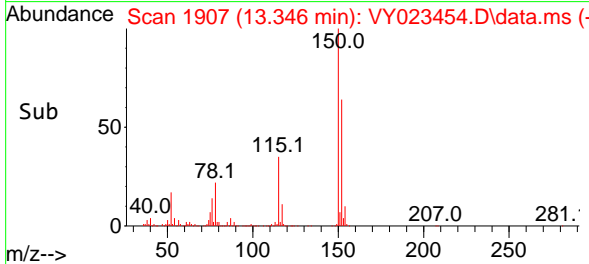
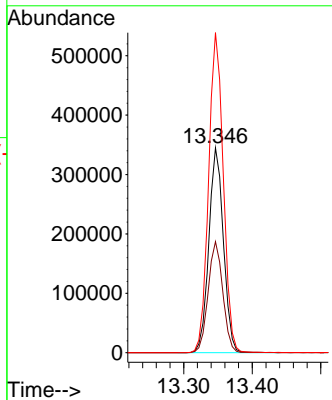
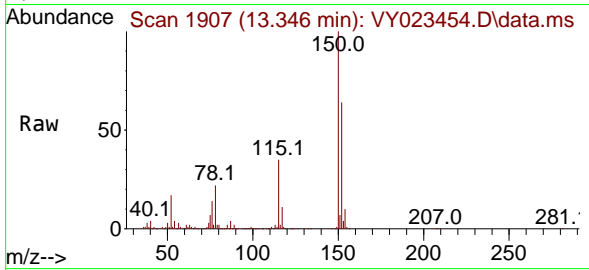




#72  
 1,4-Dichlorobenzene-d4  
 Concen: 50.000 ug/l  
 RT: 13.346 min Scan# 1907  
 Delta R.T. -0.000 min  
 Lab File: VY023454.D  
 Acq: 13 Oct 2025 15:52

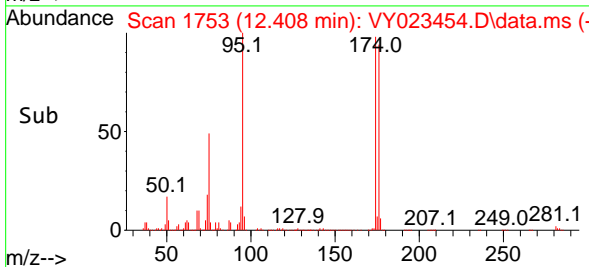
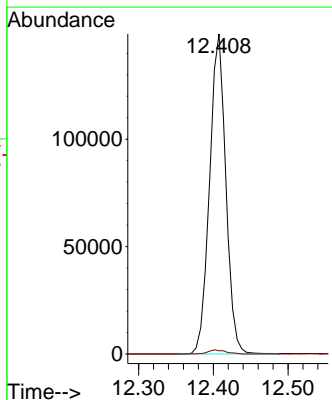
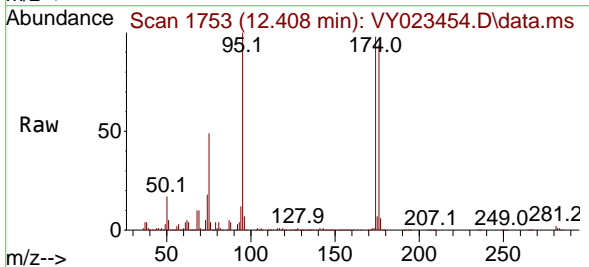
Instrument : MSVOA\_Y  
 ClientSampleId : VIBLK

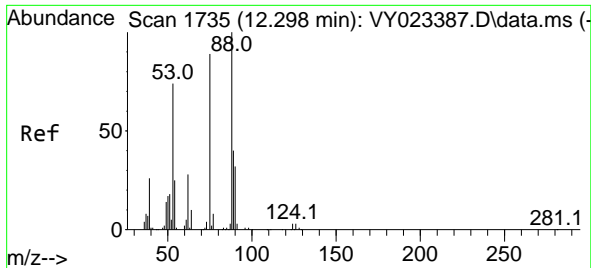
Tgt Ion	Resp	Lower	Upper
152	512322	100	
115	54.5	27.1	81.2
150	157.1	0.0	347.4



#76  
 1,2,3-Trichloropropane  
 Concen: 49.782 ug/l  
 RT: 12.408 min Scan# 1753  
 Delta R.T. -0.146 min  
 Lab File: VY023454.D  
 Acq: 13 Oct 2025 15:52

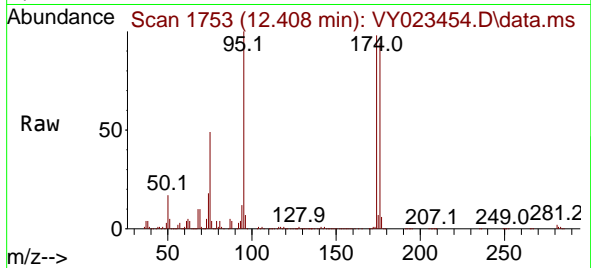
Tgt Ion	Resp	Lower	Upper
75	225016	100	
77	1.4	0.0	0.0#





#81  
 trans-1,4-Dichloro-2-butene  
 Concen: 122.074 ug/l  
 RT: 12.408 min Scan# 1  
 Delta R.T. 0.110 min  
 Lab File: VY023454.D  
 Acq: 13 Oct 2025 15:52

Instrument :  
 MSVOA\_Y  
 ClientSampleId :  
 VIBLK



Tgt Ion: 75 Resp: 225016  
 Ion Ratio Lower Upper  
 75 100  
 53 0.0 68.6 102.8#  
 89 0.0 39.0 58.4#

