

Data Path : Z:\voasrv\HPCHEM1\MSVOA_Y\Data\VY101425\
 Data File : VY023466.D
 Acq On : 14 Oct 2025 16:50
 Operator : SY/MD
 Sample : Q3345-05
 Misc : 5.29g/5.0mL/MSVOA_Y/SOIL/A
 ALS Vial : 12 Sample Multiplier: 1

Instrument :
 MSVOA_Y
 ClientSampleId :
 M-R-SOIL

Quant Time: Oct 15 03:31:21 2025
 Quant Method : Z:\voasrv\HPCHEM1\MSVOA_Y\methods\82Y100725S.M
 Quant Title : SW846 8260
 QLast Update : Wed Oct 08 05:12:50 2025
 Response via : Initial Calibration

Compound	R.T.	QIon	Response	Conc	Units	Dev(Min)
Internal Standards						
1) Pentafluorobenzene	7.713	168	436694	50.000	ug/l	0.00
34) 1,4-Difluorobenzene	8.616	114	866583	50.000	ug/l	0.00
63) Chlorobenzene-d5	11.414	117	926425	50.000	ug/l	0.00
72) 1,4-Dichlorobenzene-d4	13.347	152	375744	50.000	ug/l	# 0.00

System Monitoring Compounds						
33) 1,2-Dichloroethane-d4	8.067	65	243256	66.614	ug/l	0.00
Spiked Amount	50.000	Range	50 - 163	Recovery	=	133.220%
35) Dibromofluoromethane	7.640	113	302809	56.868	ug/l	0.00
Spiked Amount	50.000	Range	54 - 147	Recovery	=	113.740%
50) Toluene-d8	10.109	98	1077393	54.332	ug/l	0.00
Spiked Amount	50.000	Range	58 - 134	Recovery	=	108.660%
62) 4-Bromofluorobenzene	12.408	95	403253	61.595	ug/l	0.00
Spiked Amount	50.000	Range	30 - 143	Recovery	=	123.200%

Target Compounds						Qvalue
11) Tert butyl alcohol	4.866	59	712	2.621	ug/l	# 79
16) Acetone	3.873	43	25339	29.147	ug/l	98
17) Carbon Disulfide	4.110	76	14667	1.316	ug/l	96
20) Methylene Chloride	4.616	84	45366	9.650	ug/l	98
25) 2-Butanone	6.903	43	7201	6.785	ug/l	# 86
31) Cyclohexane	7.713	56	8712	1.434	ug/l	# 3
36) 1,1-Dichloropropene	7.707	75	29729	4.217	ug/l	# 47
38) Carbon Tetrachloride	7.713	117	41164	4.816	ug/l	# 16
39) Methylcyclohexane	9.116	83	15720	1.713	ug/l	94
40) Benzene	8.085	78	46661	2.090	ug/l	95
52) Toluene	10.170	92	21811	1.505	ug/l	97
55) 1,1,2-Trichloroethane	10.548	97	26969	6.432	ug/l	# 22
56) Ethyl methacrylate	10.445	69	14382	2.974	ug/l	# 2
59) 2-Hexanone	10.731	43	26890	13.078	ug/l	# 26
67) Ethyl Benzene	11.518	91	1177743	36.110	ug/l	100
68) m/p-Xylenes	11.627	106	245402	18.759	ug/l	98
69) o-Xylene	11.957	106	388797	31.685	ug/l	100
70) Styrene	11.957	104	30403	1.507	ug/l	# 1
73) Isopropylbenzene	12.255	105	983107	39.702	ug/l	100
74) N-amyl acetate	12.048	43	51818	11.651	ug/l	# 54
75) 1,1,2,2-Tetrachloroethane	12.481	83	13867	3.424	ug/l	# 52
76) 1,2,3-Trichloropropane	12.408	75	186596	56.287	ug/l	# 100
78) n-propylbenzene	12.597	91	685452	23.921	ug/l	100
79) 2-Chlorotoluene	12.688	91	53952	3.215	ug/l	# 52
80) 1,3,5-Trimethylbenzene	12.737	105	441307	22.055	ug/l	99
81) trans-1,4-Dichloro-2-b...	12.255	75	10770	7.967	ug/l	# 37
82) 4-Chlorotoluene	12.737	91	46114	2.668	ug/l	# 46
83) tert-Butylbenzene	12.999	119	19418	1.051	ug/l	# 45
84) 1,2,4-Trimethylbenzene	13.042	105	1506925	75.462	ug/l	99
85) sec-Butylbenzene	13.176	105	78870	2.976	ug/l	# 59
86) p-Isopropyltoluene	13.292	119	105532	4.677	ug/l	# 79
89) n-Butylbenzene	13.548	91	5159990	262.445	ug/l	# 41
90) Hexachloroethane	13.889	117	118012	24.316	ug/l	# 6
92) 1,2-Dibromo-3-Chloropr...	14.279	75	12626	19.000	ug/l	# 1
95) Naphthalene	15.145	128	8733525	782.770	ug/l	99

Data Path : Z:\voasrv\HPCHEM1\MSVOA_Y\Data\VY101425\
Data File : VY023466.D
Acq On : 14 Oct 2025 16:50
Operator : SY/MD
Sample : Q3345-05
Misc : 5.29g/5.0mL/MSVOA_Y/SOIL/A
ALS Vial : 12 Sample Multiplier: 1

Instrument :
MSVOA_Y
ClientSampleId :
M-R-SOIL

Quant Time: Oct 15 03:31:21 2025
Quant Method : Z:\voasrv\HPCHEM1\MSVOA_Y\methods\82Y100725S.M
Quant Title : SW846 8260
QLast Update : Wed Oct 08 05:12:50 2025
Response via : Initial Calibration

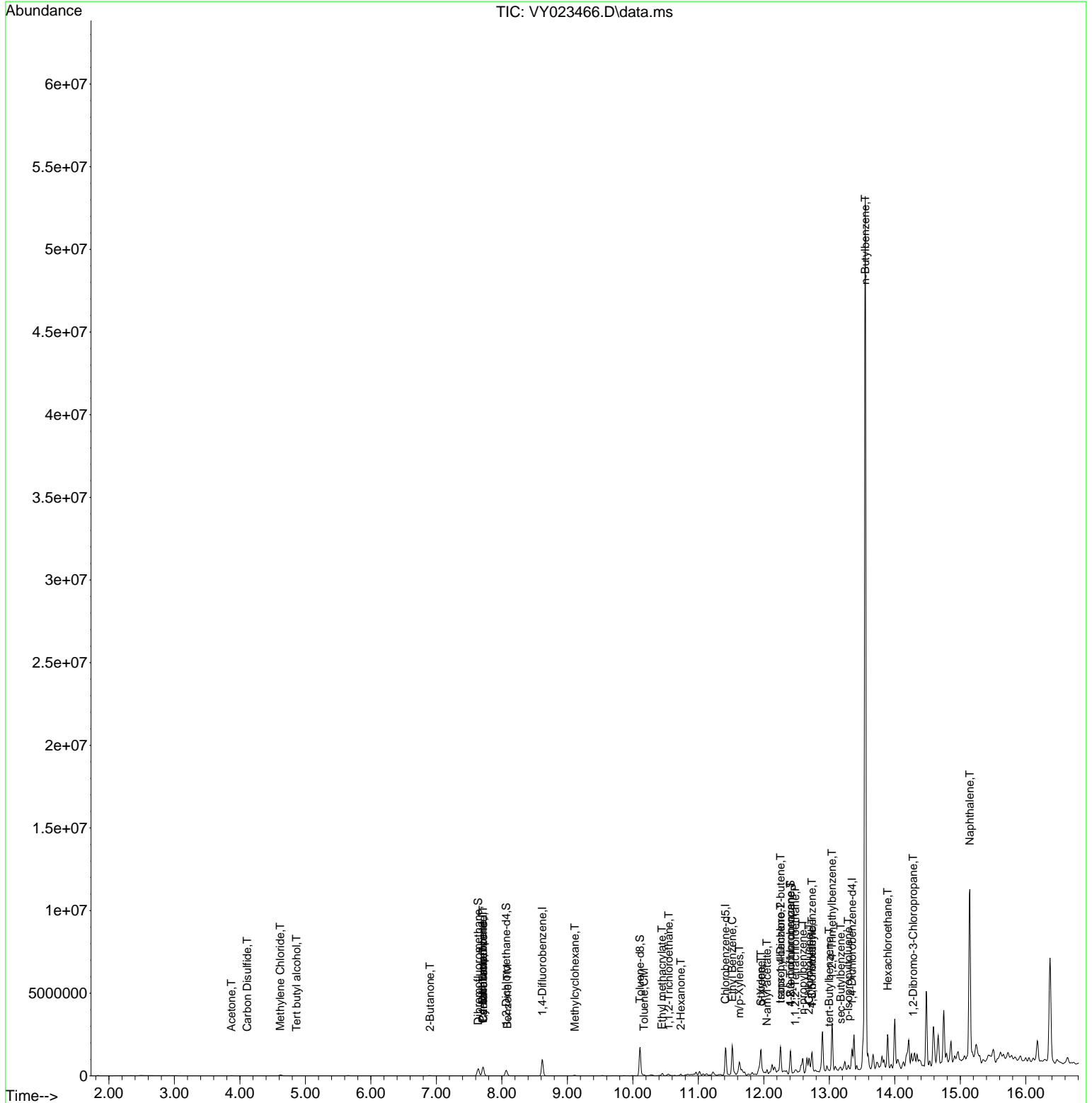
Compound	R.T.	QIon	Response	Conc	Units	Dev(Min)
----------	------	------	----------	------	-------	----------

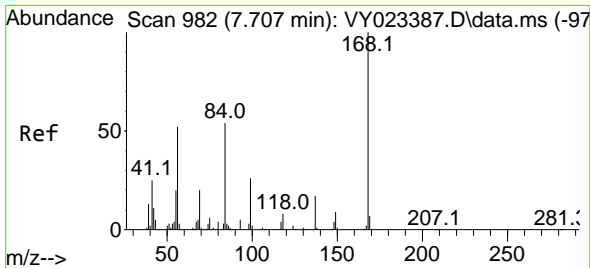
(#) = qualifier out of range (m) = manual integration (+) = signals summed

Data Path : Z:\voasrv\HPCHEM1\MSVOA_Y\Data\VY101425\
 Data File : VY023466.D
 Acq On : 14 Oct 2025 16:50
 Operator : SY/MD
 Sample : Q3345-05
 Misc : 5.29g/5.0mL/MSVOA_Y/SOIL/A
 ALS Vial : 12 Sample Multiplier: 1

Instrument :
 MSVOA_Y
ClientSampleId :
 M-R-SOIL

Quant Time: Oct 15 03:31:21 2025
 Quant Method : Z:\voasrv\HPCHEM1\MSVOA_Y\methods\82Y100725S.M
 Quant Title : SW846 8260
 QLast Update : Wed Oct 08 05:12:50 2025
 Response via : Initial Calibration

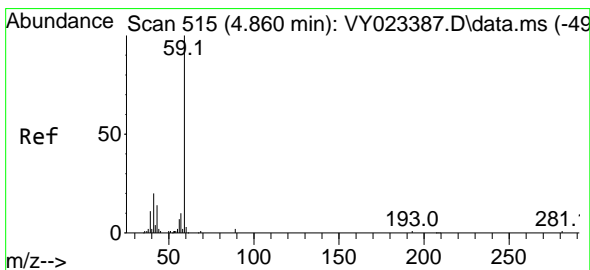
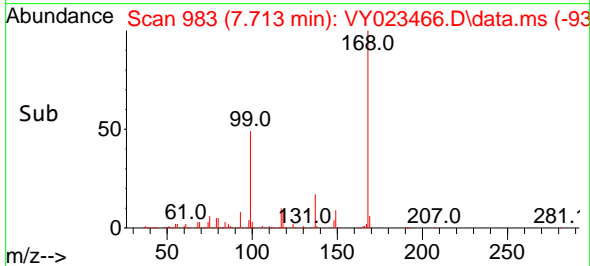
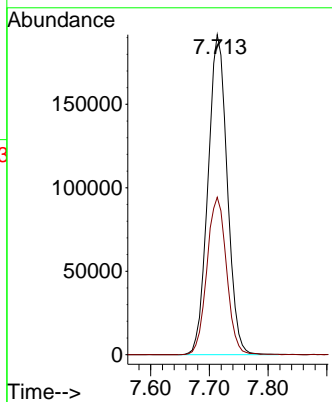
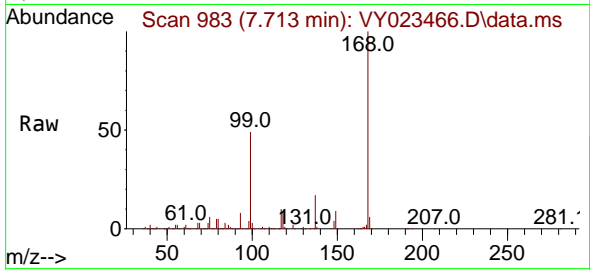




#1
 Pentafluorobenzene
 Concen: 50.000 ug/l
 RT: 7.713 min Scan# 91
 Delta R.T. 0.006 min
 Lab File: VY023466.D
 Acq: 14 Oct 2025 16:50

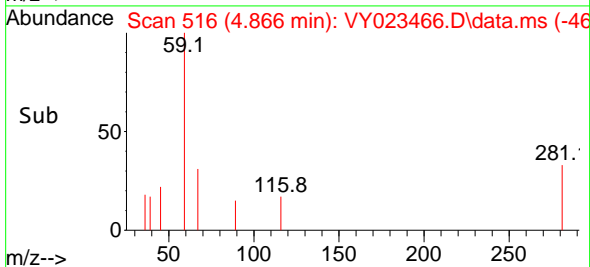
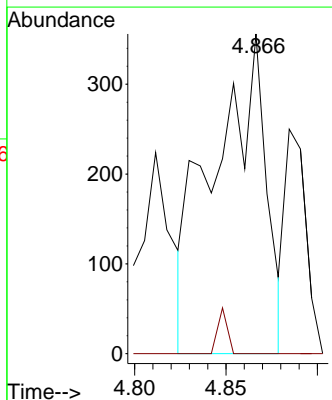
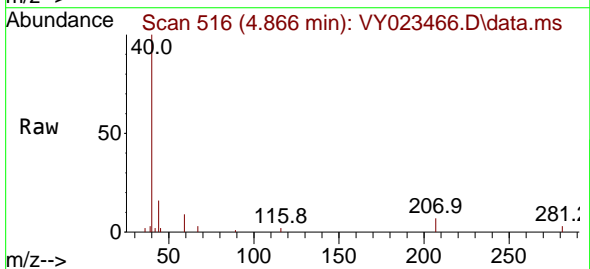
Instrument :
 MSVOA_Y
 ClientSampleId :
 M-R-SOIL

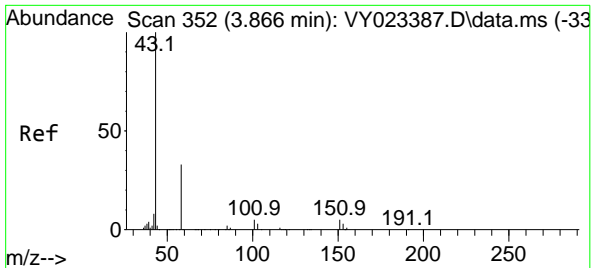
Tgt Ion:168 Resp: 436694
 Ion Ratio Lower Upper
 168 100
 99 49.2 39.7 59.5



#11
 Tert butyl alcohol
 Concen: 2.621 ug/l
 RT: 4.866 min Scan# 516
 Delta R.T. 0.006 min
 Lab File: VY023466.D
 Acq: 14 Oct 2025 16:50

Tgt Ion: 59 Resp: 712
 Ion Ratio Lower Upper
 59 100
 57 2.7 8.3 12.5#

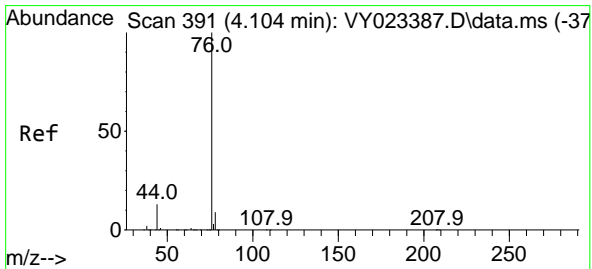
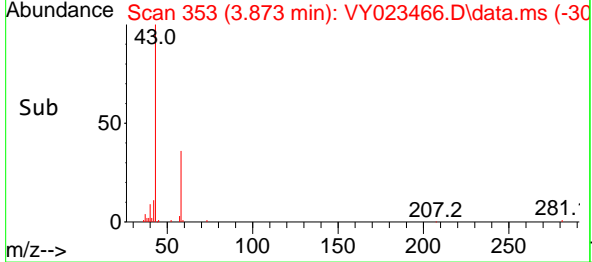
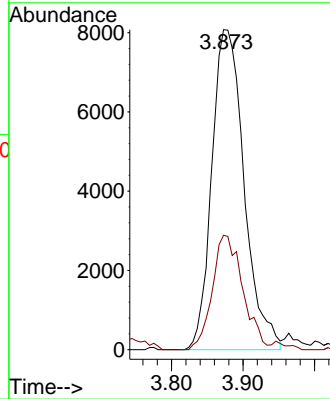
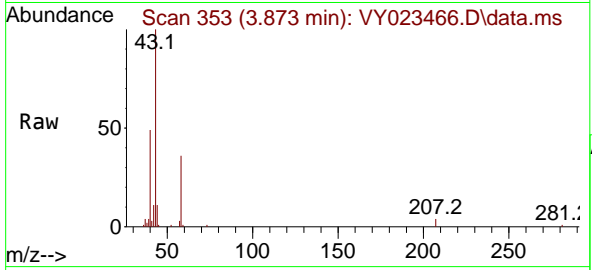




#16
 Acetone
 Concen: 29.147 ug/l
 RT: 3.873 min Scan# 311
 Delta R.T. 0.006 min
 Lab File: VY023466.D
 Acq: 14 Oct 2025 16:50

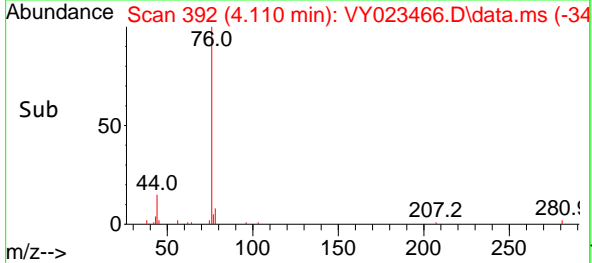
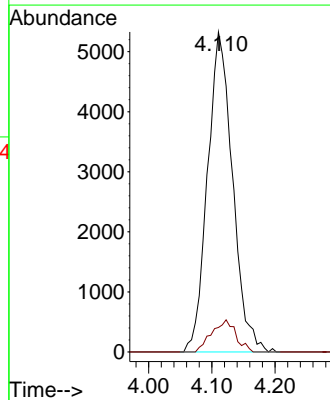
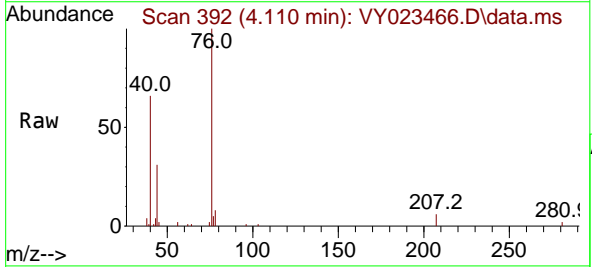
Instrument : MSVOA_Y
 ClientSampleId : M-R-SOIL

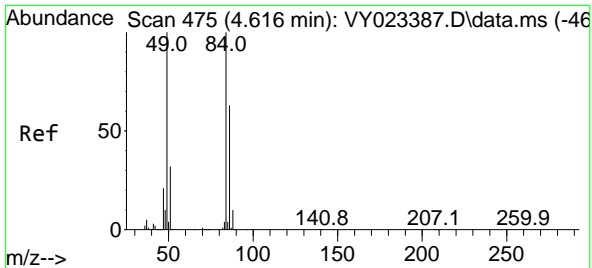
Tgt Ion: 43 Resp: 25339
 Ion Ratio Lower Upper
 43 100
 58 35.8 27.7 41.5



#17
 Carbon Disulfide
 Concen: 1.316 ug/l
 RT: 4.110 min Scan# 392
 Delta R.T. 0.006 min
 Lab File: VY023466.D
 Acq: 14 Oct 2025 16:50

Tgt Ion: 76 Resp: 14667
 Ion Ratio Lower Upper
 76 100
 78 7.6 7.3 10.9

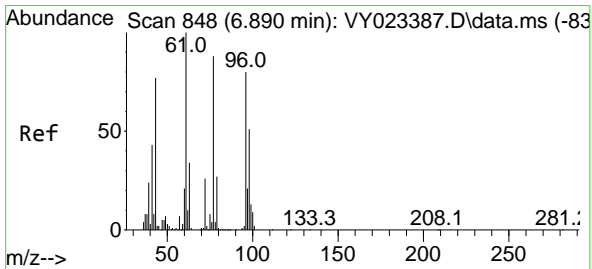
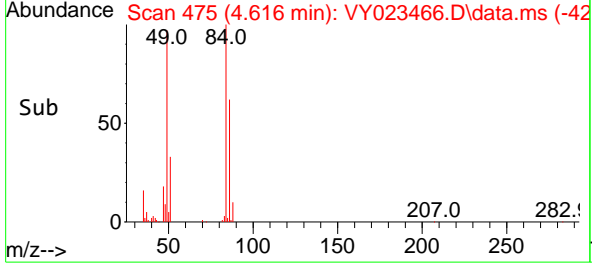
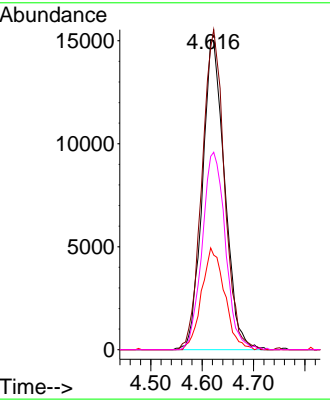
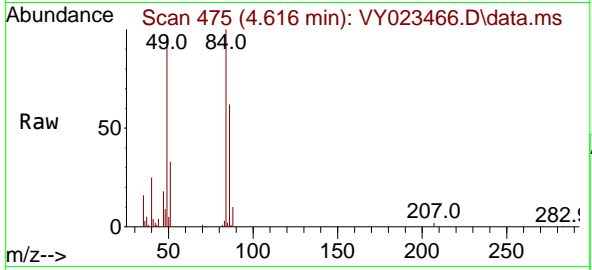




#20
 Methylene Chloride
 Concen: 9.650 ug/l
 RT: 4.616 min Scan# 41
 Delta R.T. 0.000 min
 Lab File: VY023466.D
 Acq: 14 Oct 2025 16:50

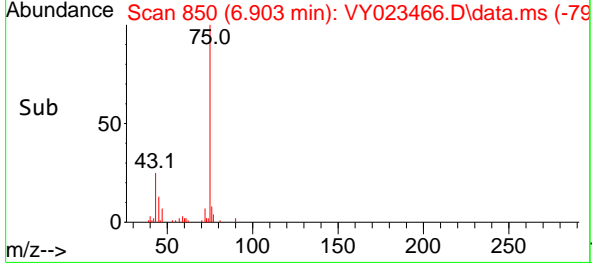
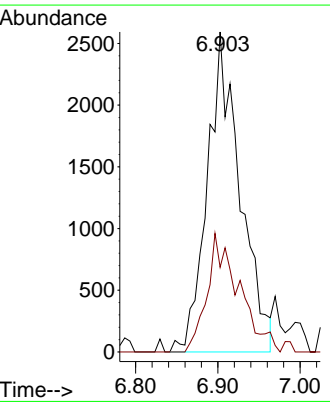
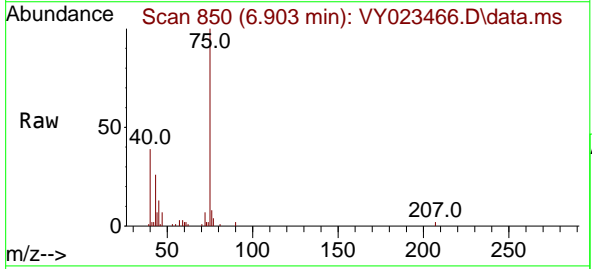
Instrument : MSVOA_Y
 ClientSampleId : M-R-SOIL

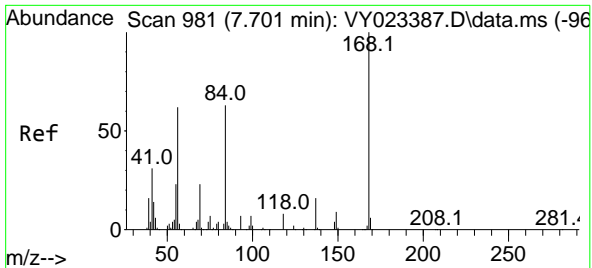
Tgt Ion	Resp	Lower	Upper
84	45366		
84	100		
49	97.4	80.2	120.4
51	32.8	25.9	38.9
86	62.3	50.6	75.8



#25
 2-Butanone
 Concen: 6.785 ug/l
 RT: 6.903 min Scan# 850
 Delta R.T. 0.012 min
 Lab File: VY023466.D
 Acq: 14 Oct 2025 16:50

Tgt Ion	Resp	Lower	Upper
43	7201		
43	100		
72	26.5	27.4	41.2



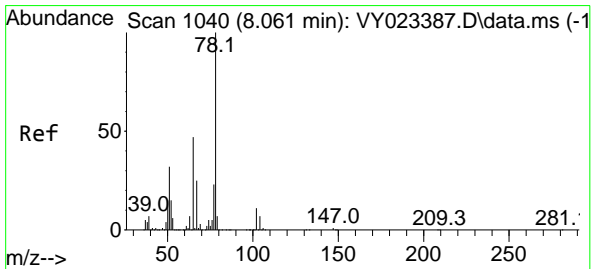
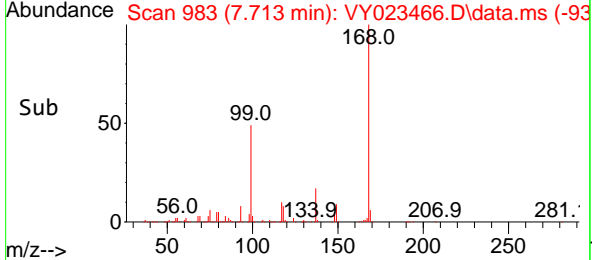
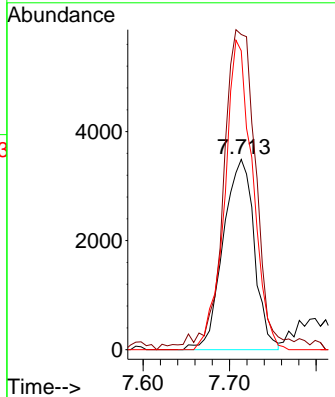
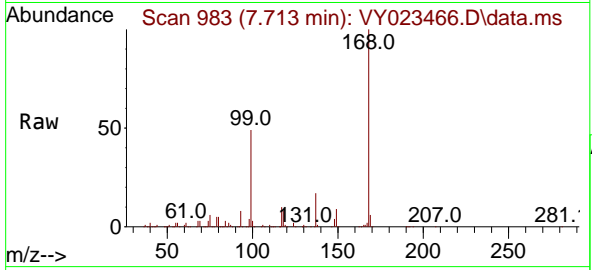


#31
 Cyclohexane
 Concen: 1.434 ug/l
 RT: 7.713 min Scan# 981
 Delta R.T. 0.012 min
 Lab File: VY023466.D
 Acq: 14 Oct 2025 16:50

Instrument : MSVOA_Y
 ClientSampleId : M-R-SOIL

Tgt Ion: 56 Resp: 8712

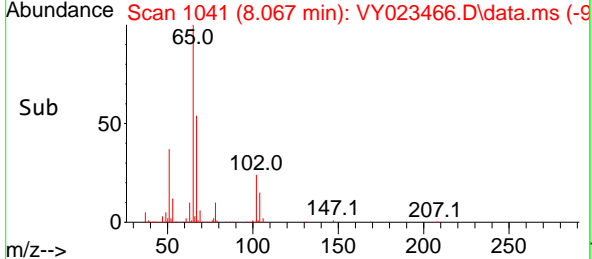
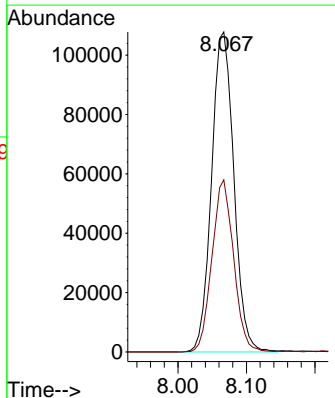
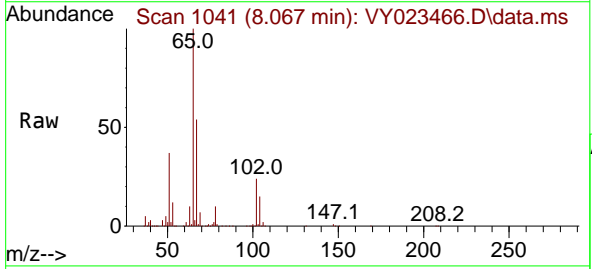
Ion	Ratio	Lower	Upper
56	100		
69	163.1	30.0	45.0#
84	157.0	81.2	121.8#

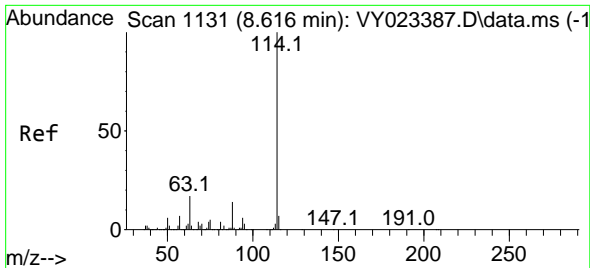


#33
 1,2-Dichloroethane-d4
 Concen: 66.614 ug/l
 RT: 8.067 min Scan# 1041
 Delta R.T. 0.006 min
 Lab File: VY023466.D
 Acq: 14 Oct 2025 16:50

Tgt Ion: 65 Resp: 243256

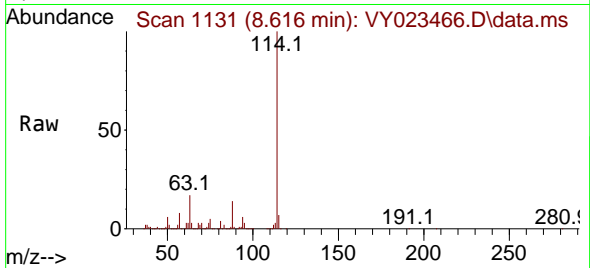
Ion	Ratio	Lower	Upper
65	100		
67	52.3	0.0	105.8





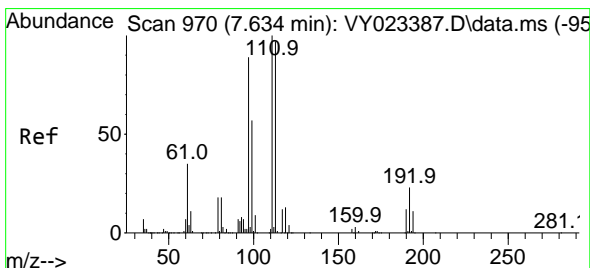
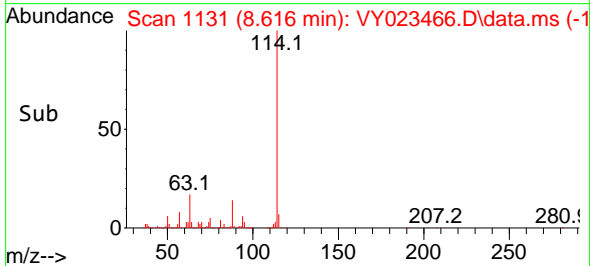
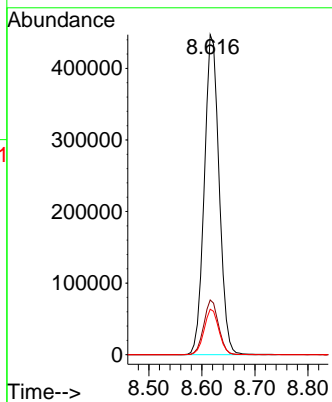
#34
 1,4-Difluorobenzene
 Concen: 50.000 ug/l
 RT: 8.616 min Scan# 1131
 Delta R.T. 0.000 min
 Lab File: VY023466.D
 Acq: 14 Oct 2025 16:50

Instrument : MSVOA_Y
 ClientSampleId : M-R-SOIL

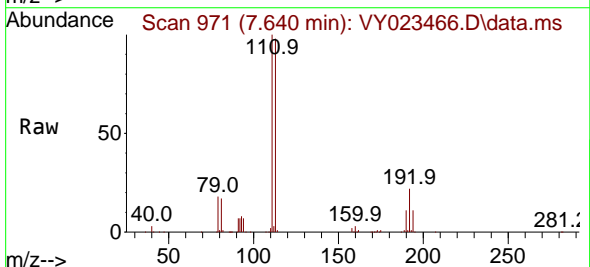


Tgt Ion:114 Resp: 866583

Ion	Ratio	Lower	Upper
114	100		
63	17.1	0.0	34.2
88	14.2	0.0	28.4

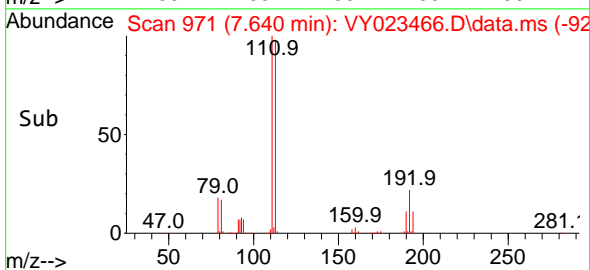
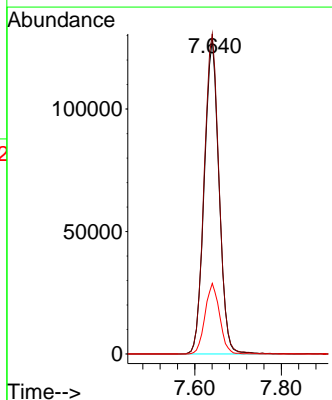


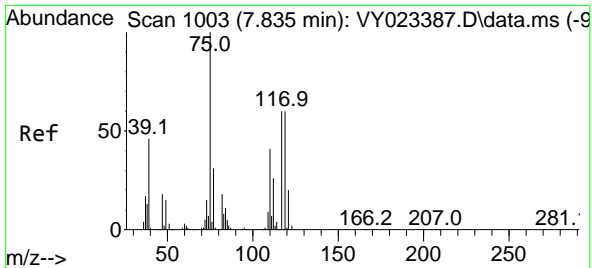
#35
 Dibromofluoromethane
 Concen: 56.868 ug/l
 RT: 7.640 min Scan# 971
 Delta R.T. 0.006 min
 Lab File: VY023466.D
 Acq: 14 Oct 2025 16:50



Tgt Ion:113 Resp: 302809

Ion	Ratio	Lower	Upper
113	100		
111	102.4	81.8	122.6
192	22.2	18.0	27.0



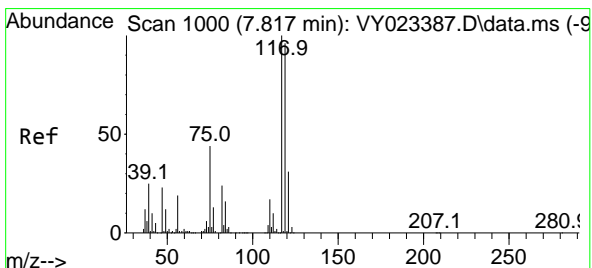
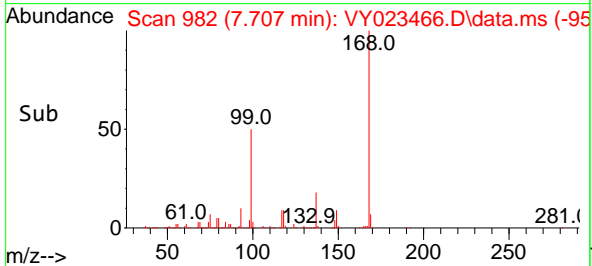
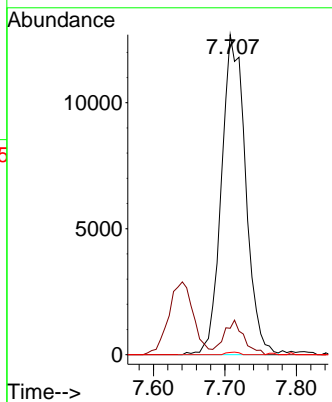
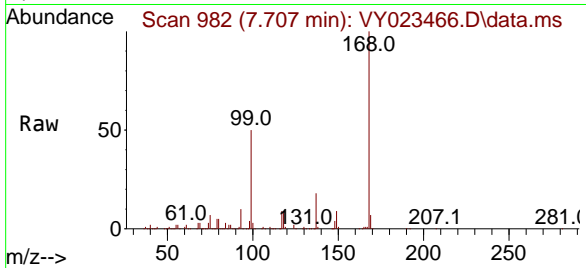


#36
 1,1-Dichloropropene
 Concen: 4.217 ug/l
 RT: 7.707 min Scan# 91
 Delta R.T. -0.128 min
 Lab File: VY023466.D
 Acq: 14 Oct 2025 16:50

Instrument : MSVOA_Y
 ClientSampleId : M-R-SOIL

Tgt Ion: 75 Resp: 29729

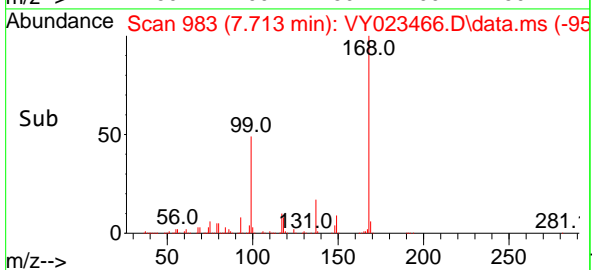
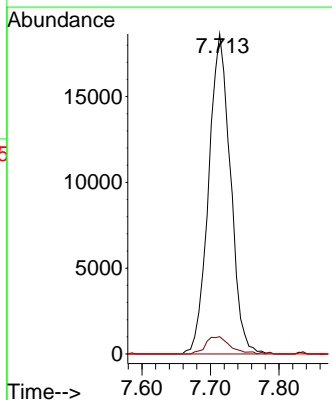
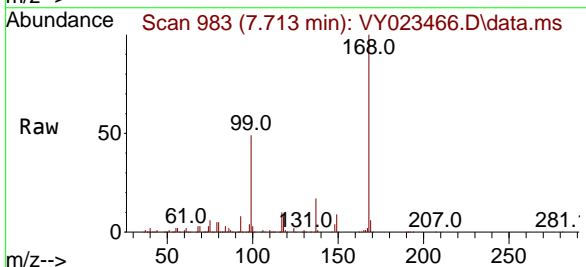
Ion	Ratio	Lower	Upper
75	100		
110	8.7	19.9	59.7#
77	0.0	25.0	37.6#

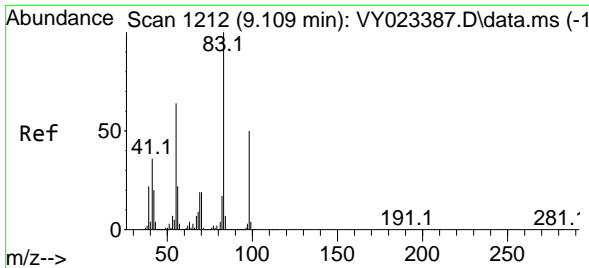


#38
 Carbon Tetrachloride
 Concen: 4.816 ug/l
 RT: 7.713 min Scan# 983
 Delta R.T. -0.104 min
 Lab File: VY023466.D
 Acq: 14 Oct 2025 16:50

Tgt Ion: 117 Resp: 41164

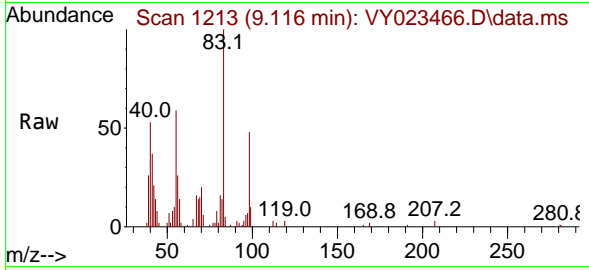
Ion	Ratio	Lower	Upper
117	100		
119	5.4	76.8	115.2#
121	0.0	24.5	36.7#



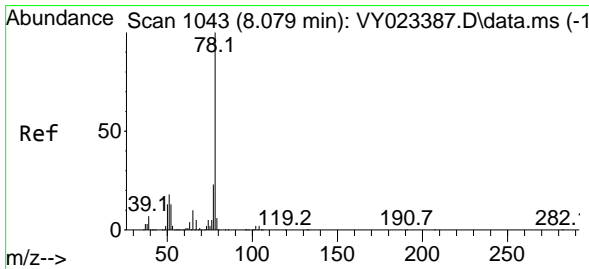
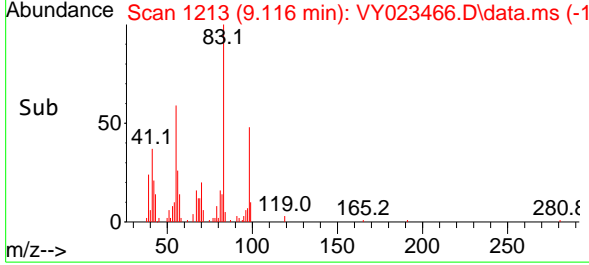
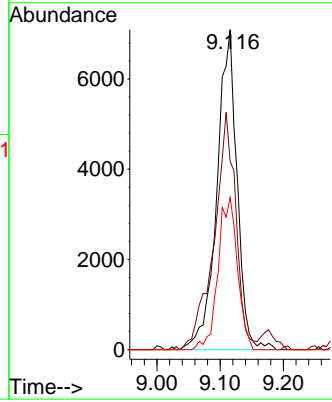


#39
 Methylcyclohexane
 Concen: 1.713 ug/l
 RT: 9.116 min Scan# 11
 Delta R.T. 0.006 min
 Lab File: VY023466.D
 Acq: 14 Oct 2025 16:50

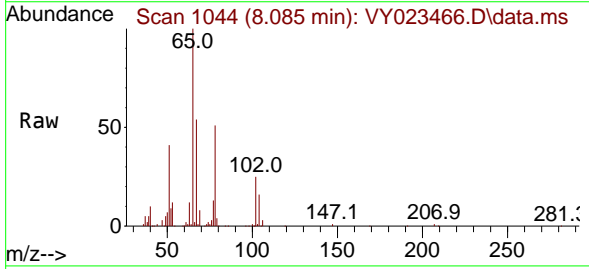
Instrument :
 MSVOA_Y
 ClientSampleId :
 M-R-SOIL



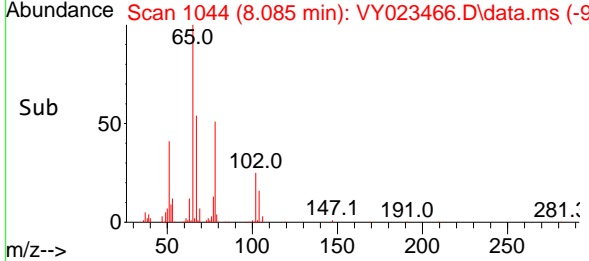
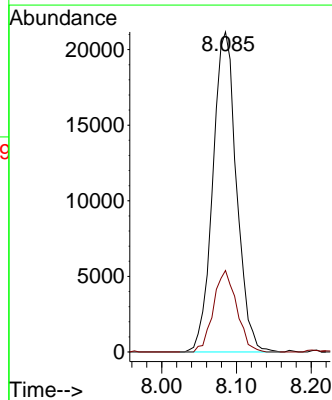
Tgt Ion: 83 Resp: 15720
 Ion Ratio Lower Upper
 83 100
 55 58.9 51.4 77.2
 98 47.5 40.4 60.6

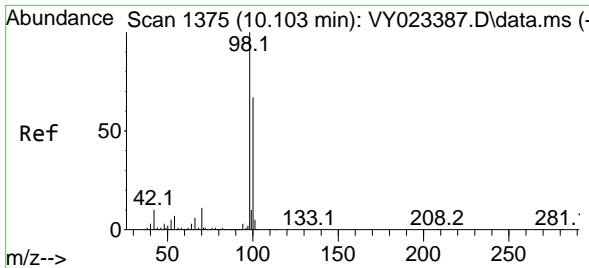


#40
 Benzene
 Concen: 2.090 ug/l
 RT: 8.085 min Scan# 1044
 Delta R.T. 0.006 min
 Lab File: VY023466.D
 Acq: 14 Oct 2025 16:50



Tgt Ion: 78 Resp: 46661
 Ion Ratio Lower Upper
 78 100
 77 25.4 18.3 27.5

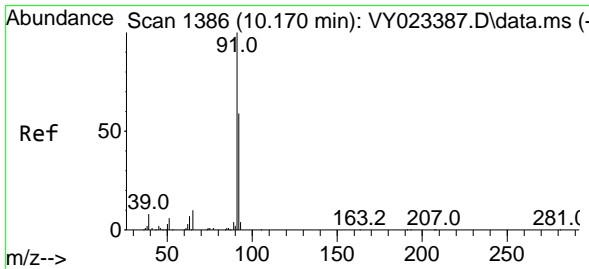
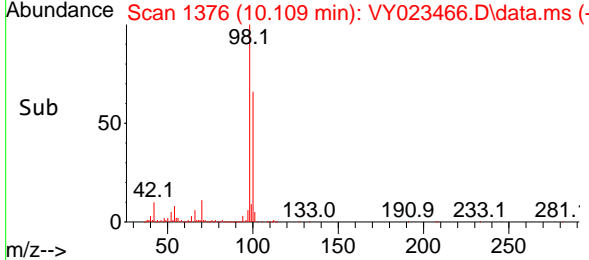
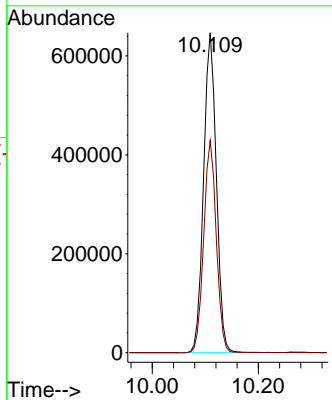
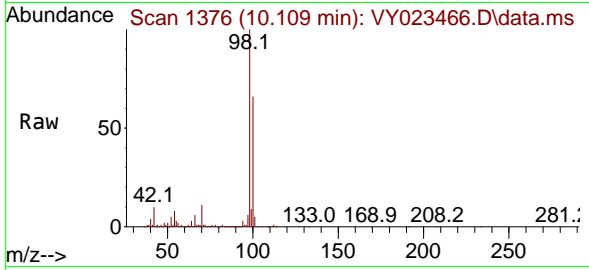




#50
 Toluene-d8
 Concen: 54.332 ug/l
 RT: 10.109 min Scan# 1375
 Delta R.T. 0.006 min
 Lab File: VY023466.D
 Acq: 14 Oct 2025 16:50

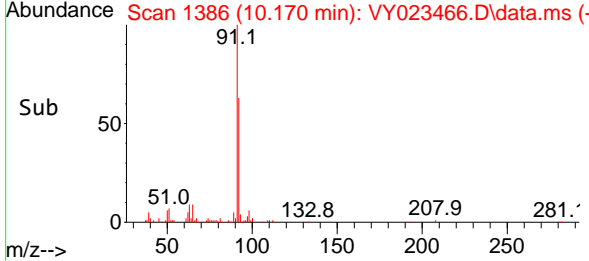
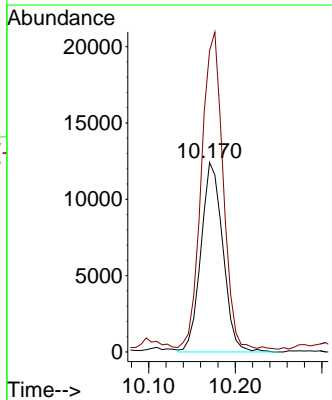
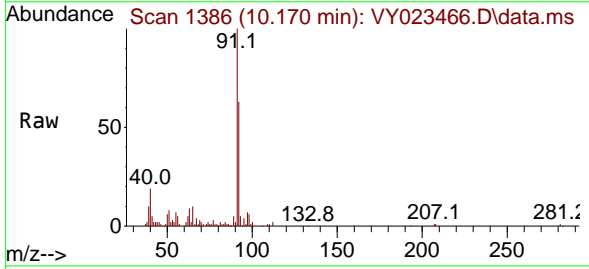
Instrument : MSVOA_Y
 ClientSampleId : M-R-SOIL

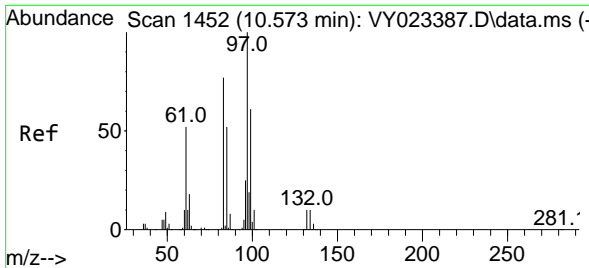
Tgt Ion: 98 Resp: 1077393
 Ion Ratio Lower Upper
 98 100
 100 65.4 53.0 79.4



#52
 Toluene
 Concen: 1.505 ug/l
 RT: 10.170 min Scan# 1386
 Delta R.T. 0.000 min
 Lab File: VY023466.D
 Acq: 14 Oct 2025 16:50

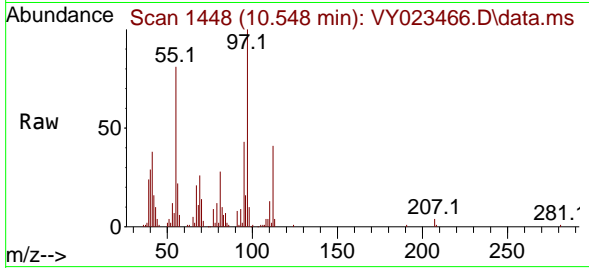
Tgt Ion: 92 Resp: 21811
 Ion Ratio Lower Upper
 92 100
 91 166.3 136.4 204.6





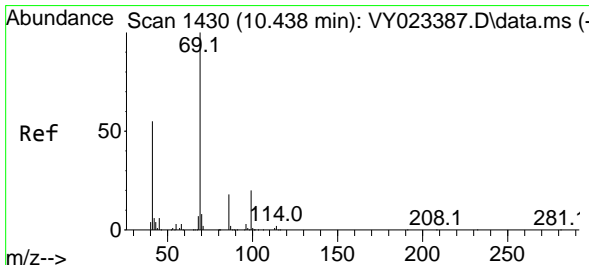
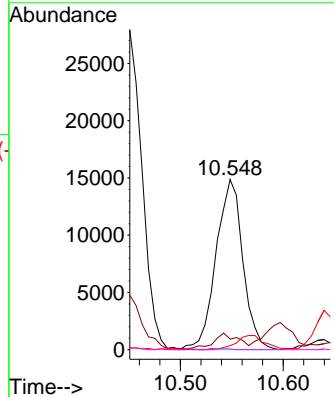
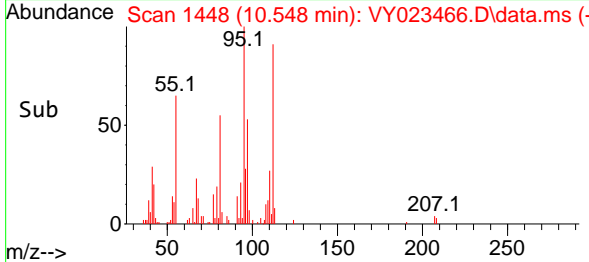
#55
 1,1,2-Trichloroethane
 Concen: 6.432 ug/l
 RT: 10.548 min Scan# 1448
 Delta R.T. -0.024 min
 Lab File: VY023466.D
 Acq: 14 Oct 2025 16:50

Instrument : MSVOA_Y
 ClientSampleId : M-R-SOIL

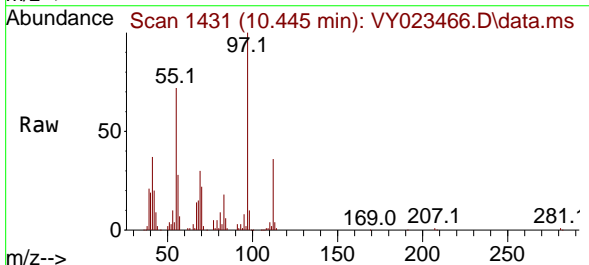


Tgt Ion: 97 Resp: 26969

Ion	Ratio	Lower	Upper
97	100		
83	5.5	61.8	92.6#
85	2.3	41.3	61.9#
99	0.5	48.7	73.1#

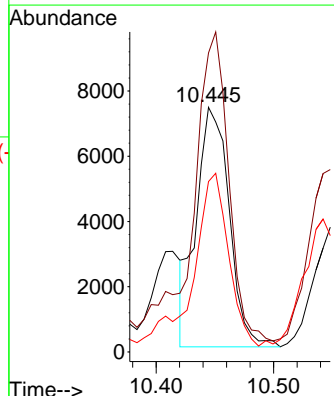
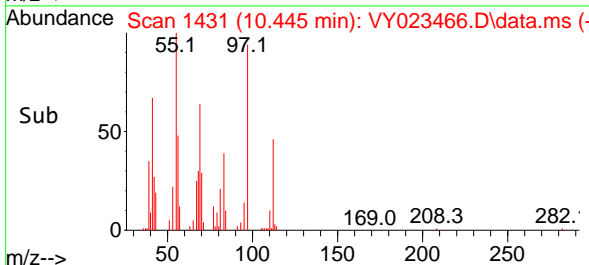


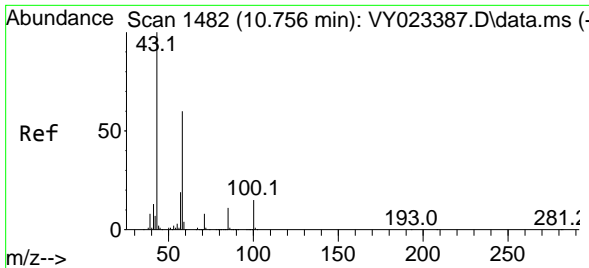
#56
 Ethyl methacrylate
 Concen: 2.974 ug/l
 RT: 10.445 min Scan# 1431
 Delta R.T. 0.006 min
 Lab File: VY023466.D
 Acq: 14 Oct 2025 16:50



Tgt Ion: 69 Resp: 14382

Ion	Ratio	Lower	Upper
69	100		
41	138.2	44.6	67.0#
39	75.9	27.0	40.4#

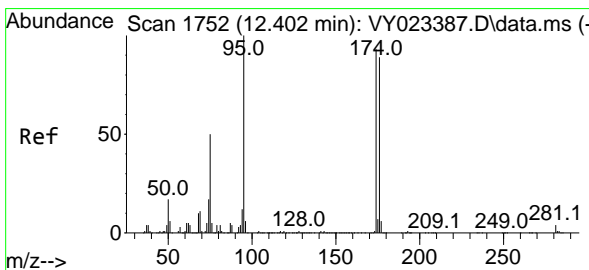
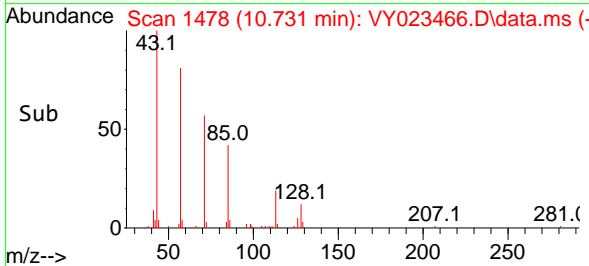
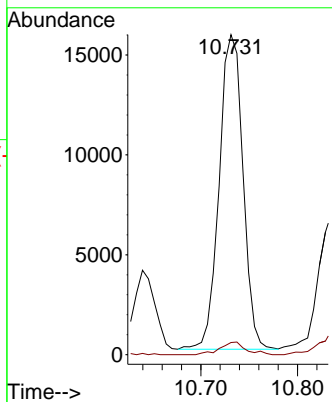
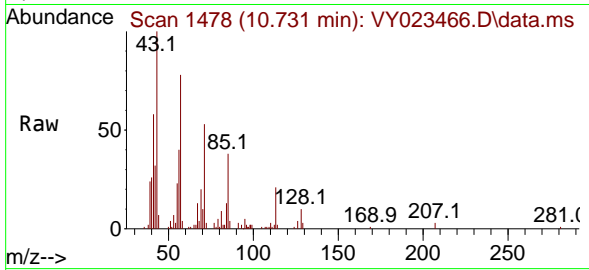




#59
 2-Hexanone
 Concen: 13.078 ug/l
 RT: 10.731 min Scan# 1482
 Delta R.T. -0.024 min
 Lab File: VY023466.D
 Acq: 14 Oct 2025 16:50

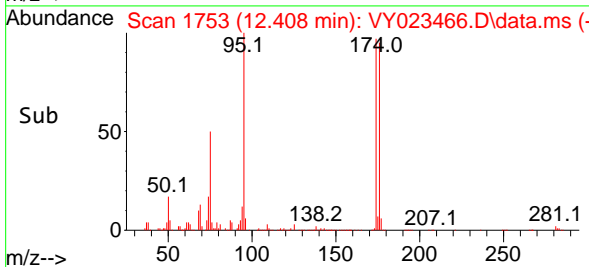
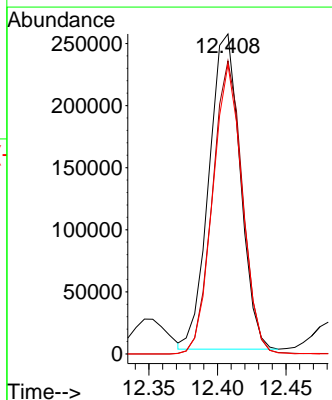
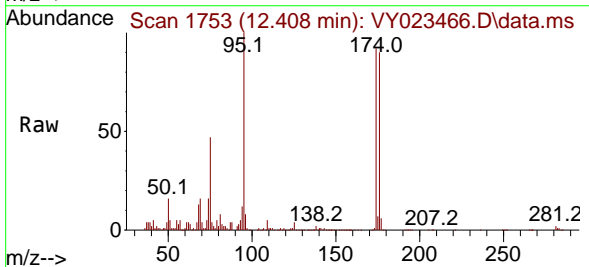
Instrument :
 MSVOA_Y
 ClientSampleId :
 M-R-SOIL

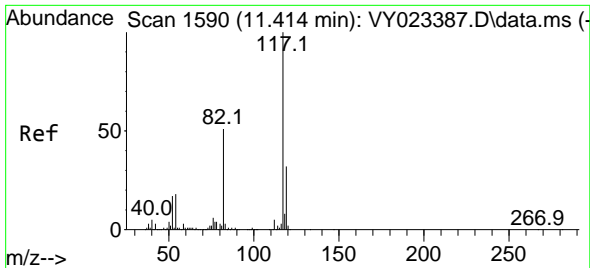
Tgt Ion: 43 Resp: 26890
 Ion Ratio Lower Upper
 43 100
 58 4.3 30.5 91.5#



#62
 4-Bromofluorobenzene
 Concen: 61.595 ug/l
 RT: 12.408 min Scan# 1753
 Delta R.T. 0.006 min
 Lab File: VY023466.D
 Acq: 14 Oct 2025 16:50

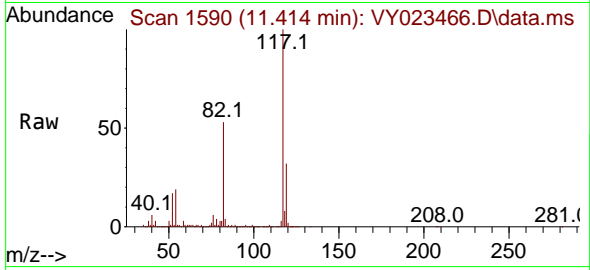
Tgt Ion: 95 Resp: 403253
 Ion Ratio Lower Upper
 95 100
 174 89.3 0.0 192.8
 176 86.9 0.0 187.6





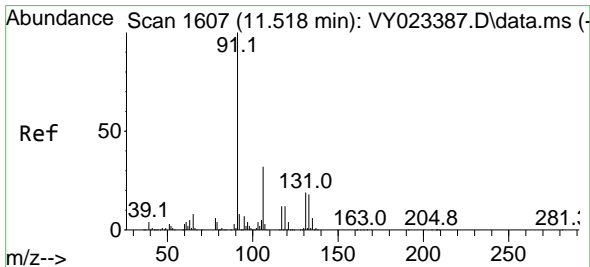
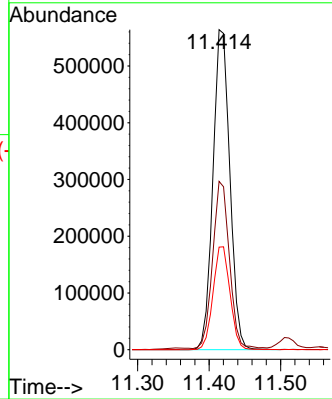
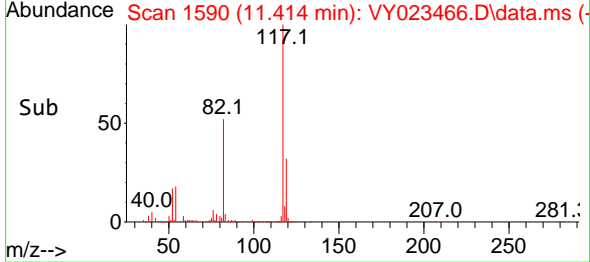
#63
 Chlorobenzene-d5
 Concen: 50.000 ug/l
 RT: 11.414 min Scan# 1590
 Delta R.T. 0.000 min
 Lab File: VY023466.D
 Acq: 14 Oct 2025 16:50

Instrument : MSVOA_Y
 ClientSampleId : M-R-SOIL

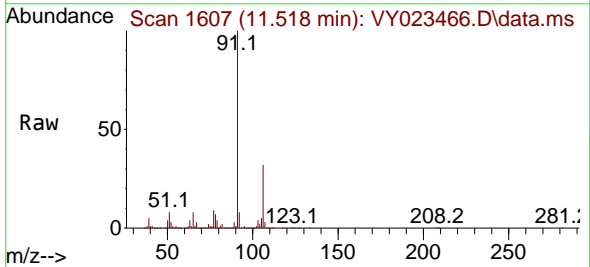


Tgt Ion:117 Resp: 926425

Ion	Ratio	Lower	Upper
117	100		
82	52.1	41.0	61.4
119	32.1	25.6	38.4

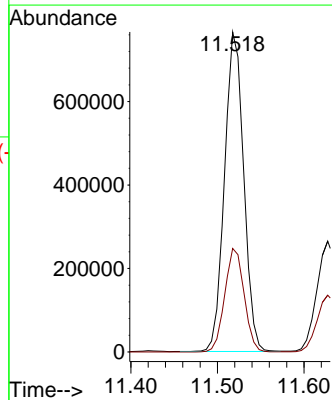
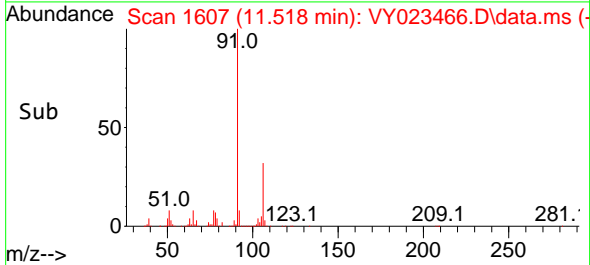


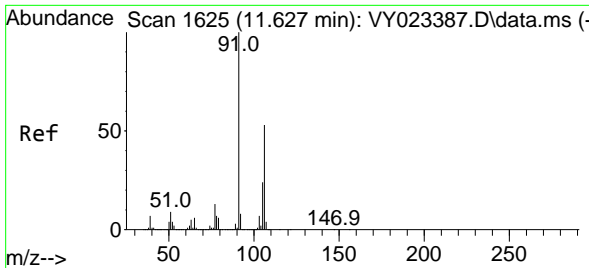
#67
 Ethyl Benzene
 Concen: 36.110 ug/l
 RT: 11.518 min Scan# 1607
 Delta R.T. 0.000 min
 Lab File: VY023466.D
 Acq: 14 Oct 2025 16:50



Tgt Ion: 91 Resp: 1177743

Ion	Ratio	Lower	Upper
91	100		
106	32.4	25.8	38.8

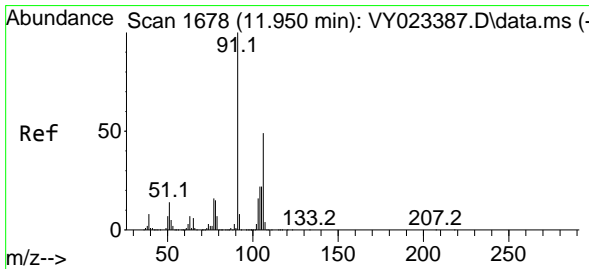
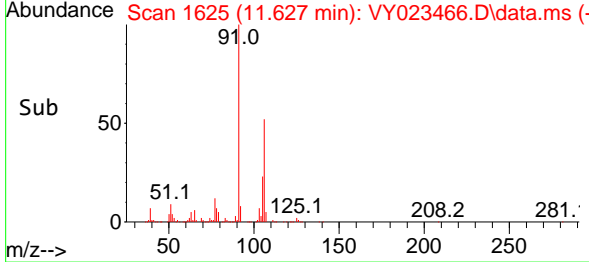
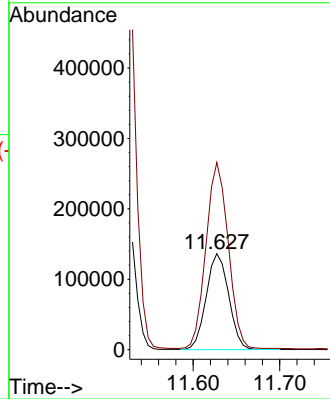
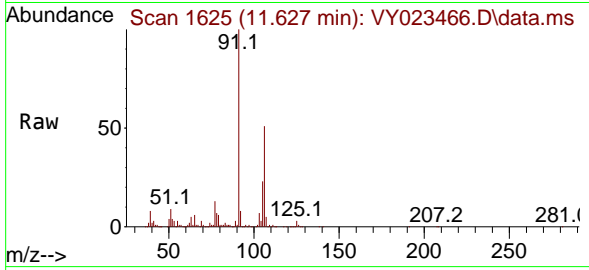




#68
 m/p-Xylenes
 Concen: 18.759 ug/l
 RT: 11.627 min Scan# 1625
 Delta R.T. 0.000 min
 Lab File: VY023466.D
 Acq: 14 Oct 2025 16:50

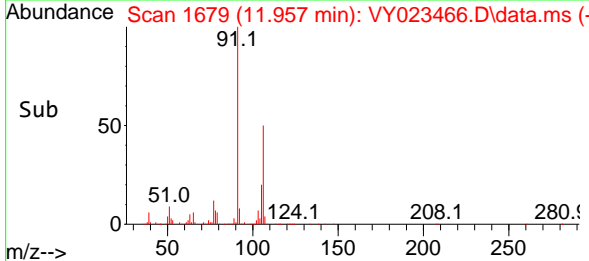
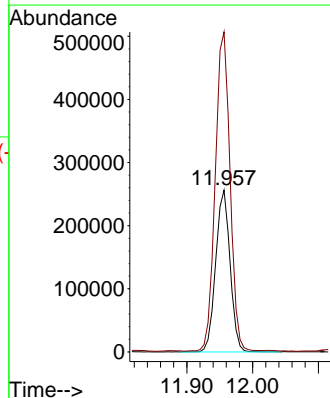
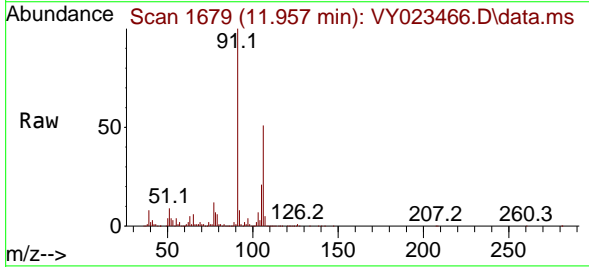
Instrument :
 MSVOA_Y
 ClientSampleId :
 M-R-SOIL

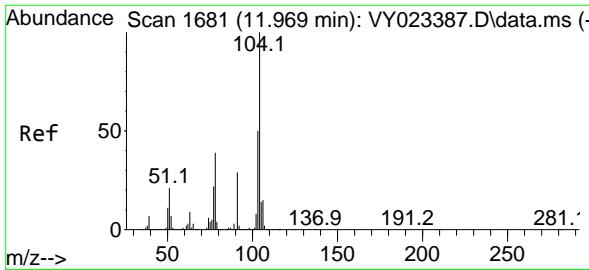
Tgt Ion:106 Resp: 245402
 Ion Ratio Lower Upper
 106 100
 91 193.3 152.6 229.0



#69
 o-Xylene
 Concen: 31.685 ug/l
 RT: 11.957 min Scan# 1679
 Delta R.T. 0.006 min
 Lab File: VY023466.D
 Acq: 14 Oct 2025 16:50

Tgt Ion:106 Resp: 388797
 Ion Ratio Lower Upper
 106 100
 91 203.1 101.4 304.1

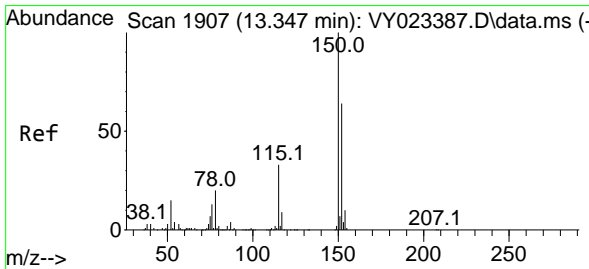
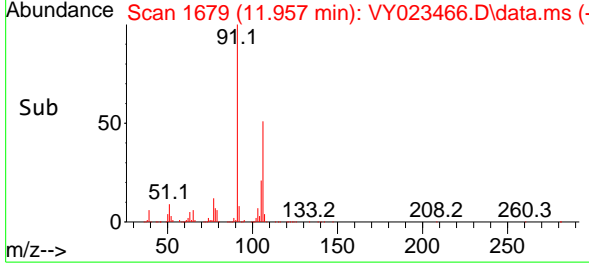
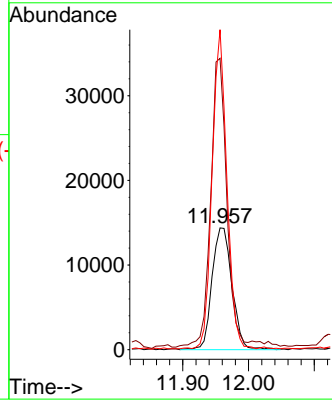
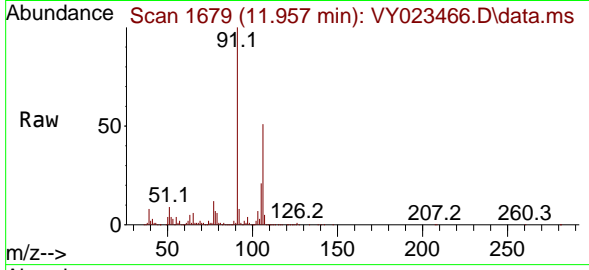




#70
 Styrene
 Concen: 1.507 ug/l
 RT: 11.957 min Scan# 10
 Delta R.T. -0.012 min
 Lab File: VY023466.D
 Acq: 14 Oct 2025 16:50

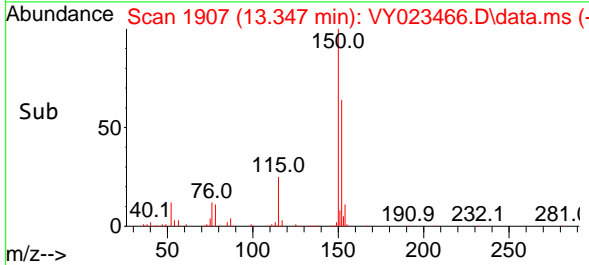
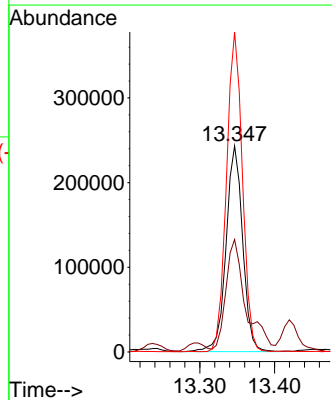
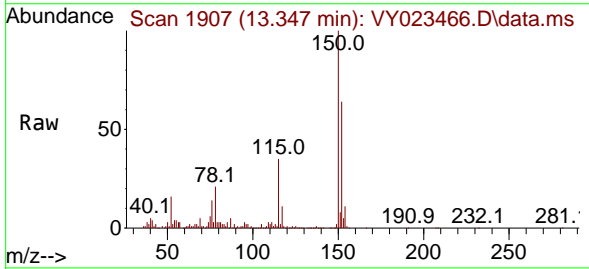
Instrument :
 MSVOA_Y
 ClientSampleId :
 M-R-SOIL

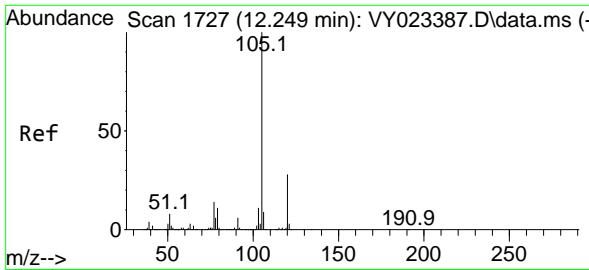
Tgt Ion:104 Resp: 30403
 Ion Ratio Lower Upper
 104 100
 78 190.9 36.1 54.1#
 103 193.0 43.2 64.8#



#72
 1,4-Dichlorobenzene-d4
 Concen: 50.000 ug/l
 RT: 13.347 min Scan# 1907
 Delta R.T. 0.000 min
 Lab File: VY023466.D
 Acq: 14 Oct 2025 16:50

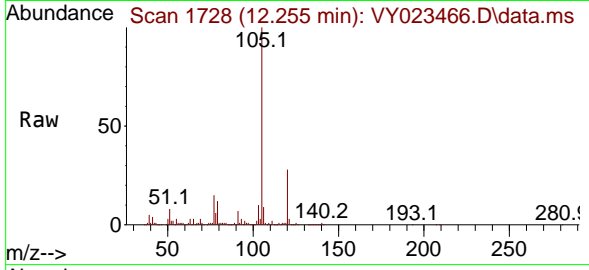
Tgt Ion:152 Resp: 375744
 Ion Ratio Lower Upper
 152 100
 115 0.0 27.1 81.2#
 150 148.6 0.0 347.4



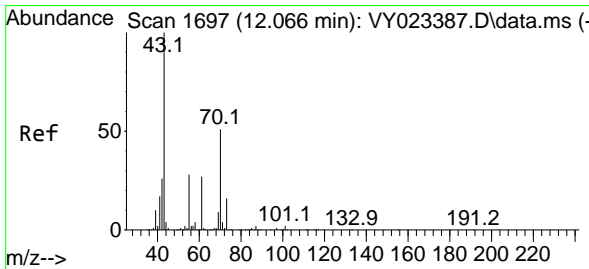
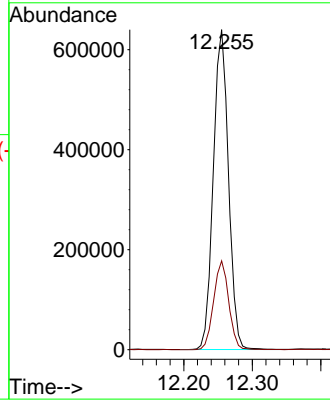
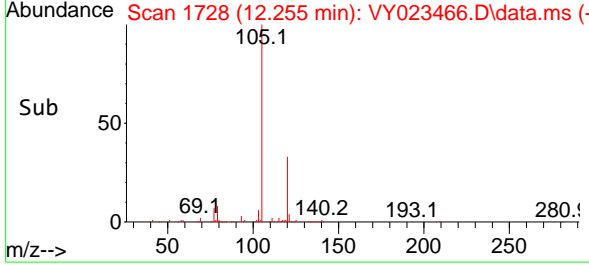


#73
 Isopropylbenzene
 Concen: 39.702 ug/l
 RT: 12.255 min Scan# 1728
 Delta R.T. 0.006 min
 Lab File: VY023466.D
 Acq: 14 Oct 2025 16:50

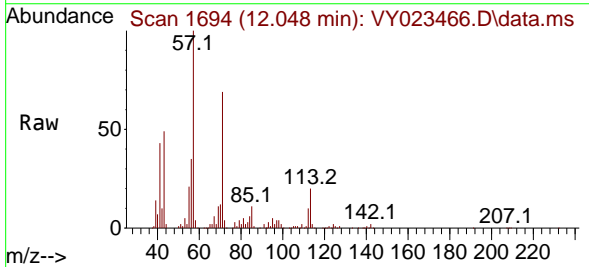
Instrument :
 MSVOA_Y
 ClientSampleId :
 M-R-SOIL



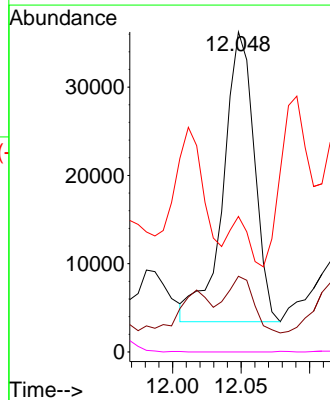
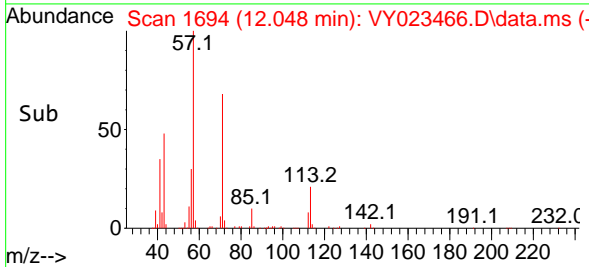
Tgt Ion:105 Resp: 983107
 Ion Ratio Lower Upper
 105 100
 120 27.6 13.9 41.7

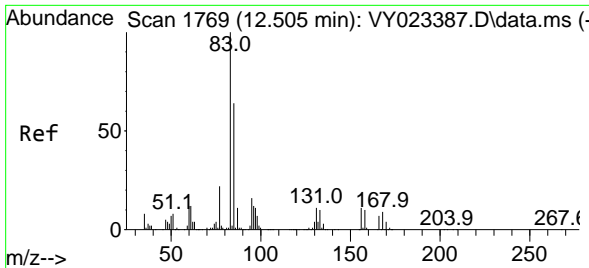


#74
 N-amy1 acetate
 Concen: 11.651 ug/l
 RT: 12.048 min Scan# 1694
 Delta R.T. -0.018 min
 Lab File: VY023466.D
 Acq: 14 Oct 2025 16:50



Tgt Ion: 43 Resp: 51818
 Ion Ratio Lower Upper
 43 100
 70 17.7 41.1 61.7#
 55 10.2 23.0 34.6#
 61 0.0 21.4 32.2#

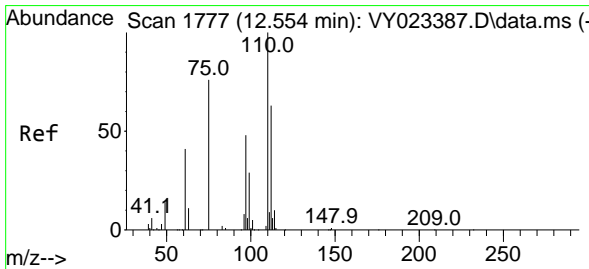
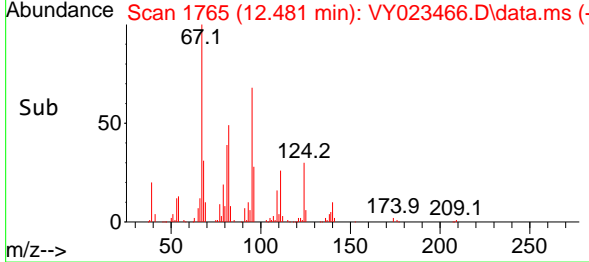
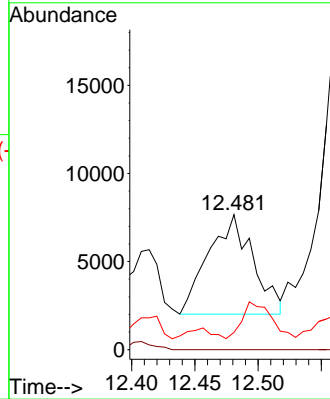
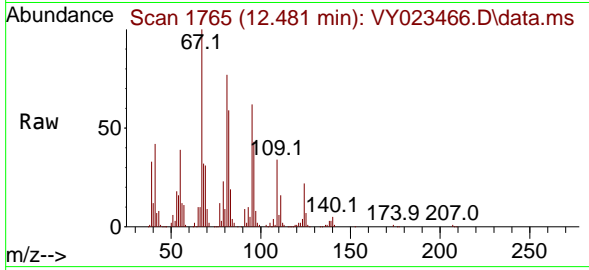




#75
 1,1,2,2-Tetrachloroethane
 Concen: 3.424 ug/l
 RT: 12.481 min Scan# 1765
 Delta R.T. -0.024 min
 Lab File: VY023466.D
 Acq: 14 Oct 2025 16:50

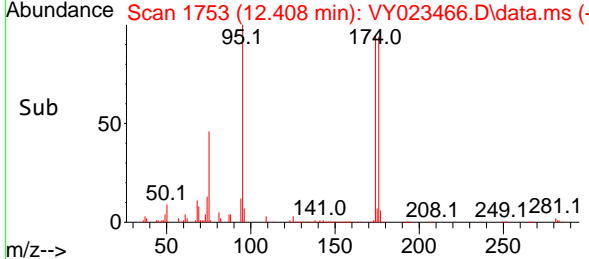
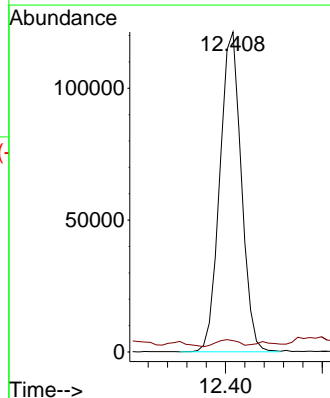
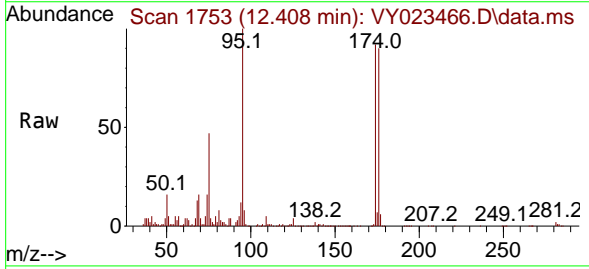
Instrument : MSVOA_Y
 ClientSampleId : M-R-SOIL

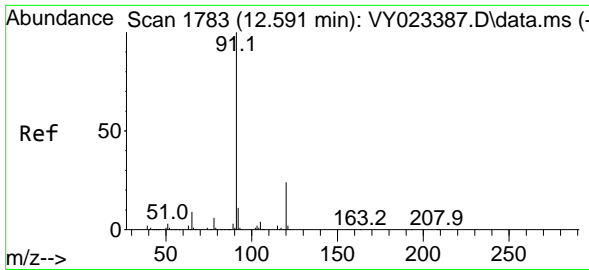
Tgt Ion	Resp	Lower	Upper
83	13867	100	
131	0.0	5.9	17.6#
85	23.7	31.8	95.3#



#76
 1,2,3-Trichloropropane
 Concen: 56.287 ug/l
 RT: 12.408 min Scan# 1753
 Delta R.T. -0.146 min
 Lab File: VY023466.D
 Acq: 14 Oct 2025 16:50

Tgt Ion	Resp	Lower	Upper
75	186596	100	
77	2.3	0.0	0.0#

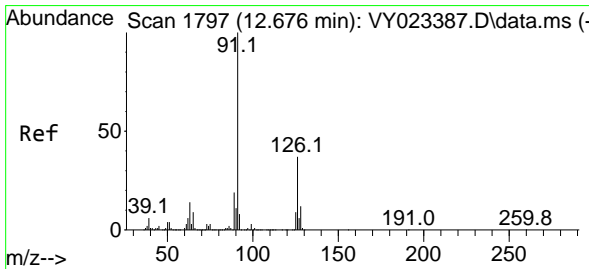
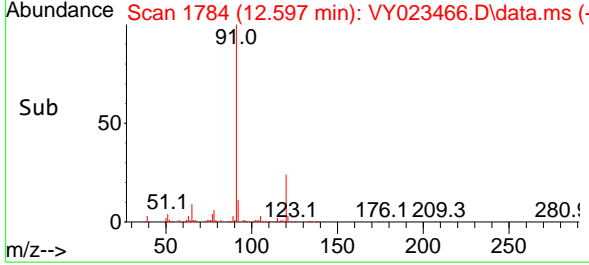
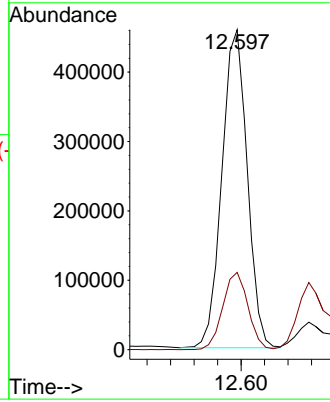
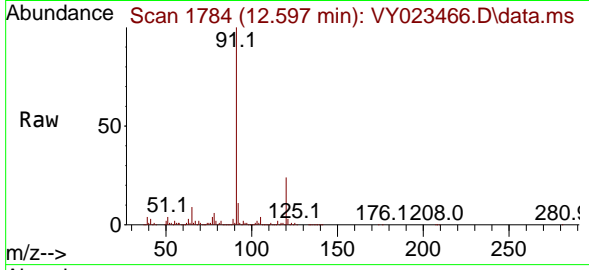




#78
 n-propylbenzene
 Concen: 23.921 ug/l
 RT: 12.597 min Scan# 1783
 Delta R.T. 0.006 min
 Lab File: VY023466.D
 Acq: 14 Oct 2025 16:50

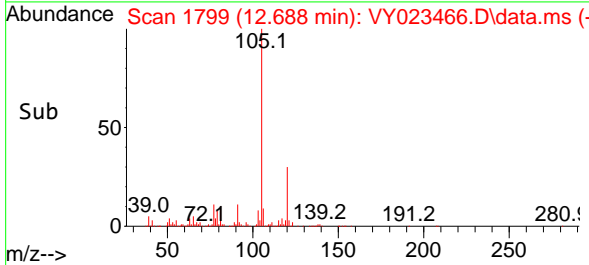
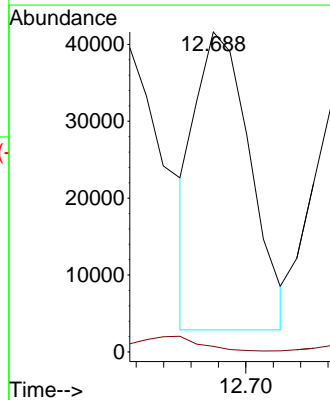
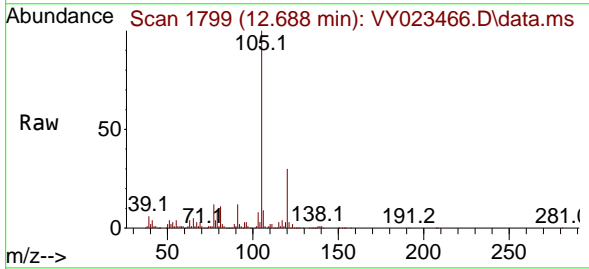
Instrument : MSVOA_Y
 ClientSampleId : M-R-SOIL

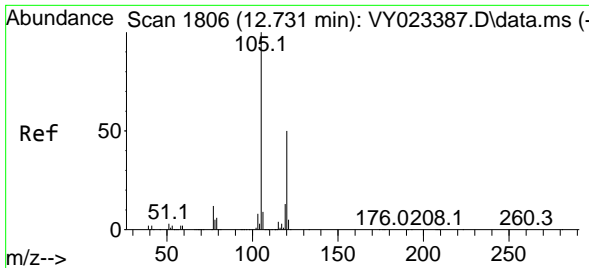
Tgt Ion: 91 Resp: 685452
 Ion Ratio Lower Upper
 91 100
 120 24.3 12.3 36.8



#79
 2-Chlorotoluene
 Concen: 3.215 ug/l
 RT: 12.688 min Scan# 1799
 Delta R.T. 0.012 min
 Lab File: VY023466.D
 Acq: 14 Oct 2025 16:50

Tgt Ion: 91 Resp: 53952
 Ion Ratio Lower Upper
 91 100
 126 8.3 18.5 55.5#

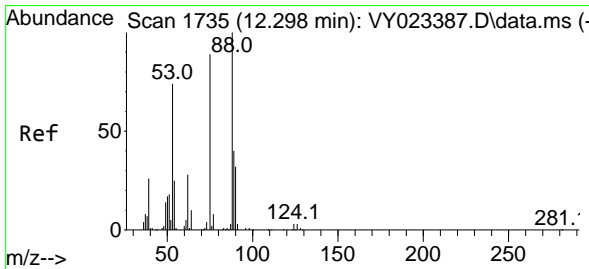
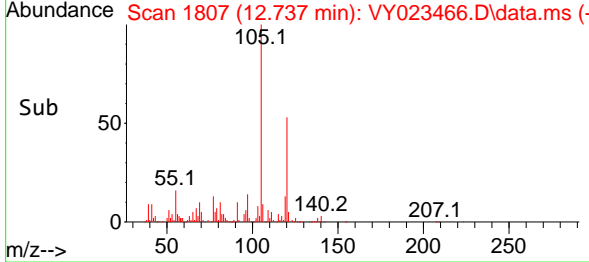
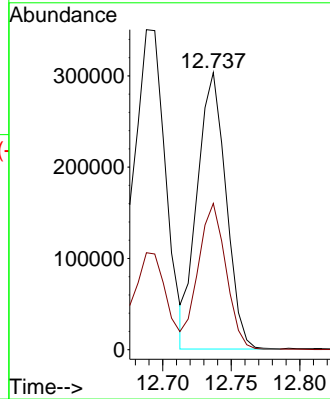
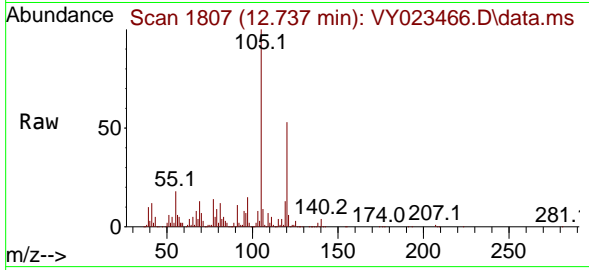




#80
 1,3,5-Trimethylbenzene
 Concen: 22.055 ug/l
 RT: 12.737 min Scan# 1807
 Delta R.T. 0.006 min
 Lab File: VY023466.D
 Acq: 14 Oct 2025 16:50

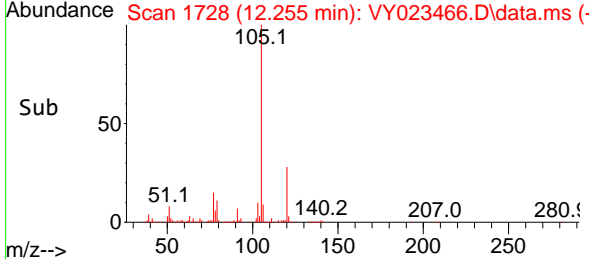
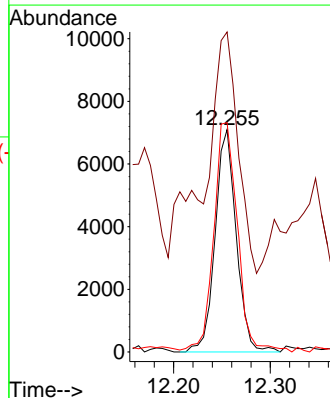
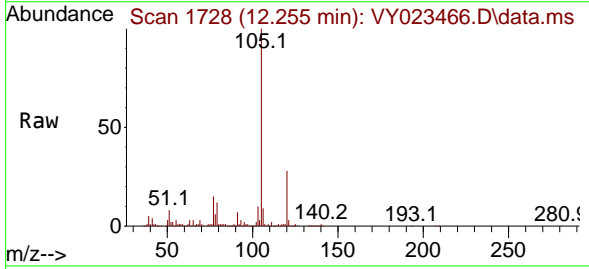
Instrument : MSVOA_Y
 ClientSampleId : M-R-SOIL

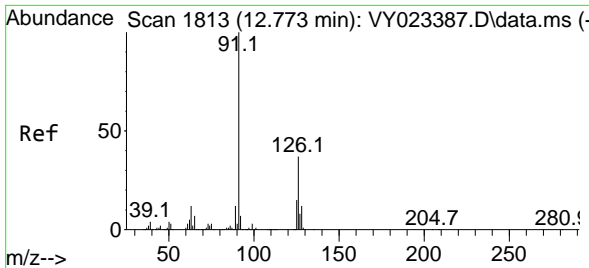
Tgt Ion:105 Resp: 441307
 Ion Ratio Lower Upper
 105 100
 120 51.5 25.4 76.4



#81
 trans-1,4-Dichloro-2-butene
 Concen: 7.967 ug/l
 RT: 12.255 min Scan# 1728
 Delta R.T. -0.043 min
 Lab File: VY023466.D
 Acq: 14 Oct 2025 16:50

Tgt Ion: 75 Resp: 10770
 Ion Ratio Lower Upper
 75 100
 53 124.3 68.6 102.8#
 89 115.8 39.0 58.4#

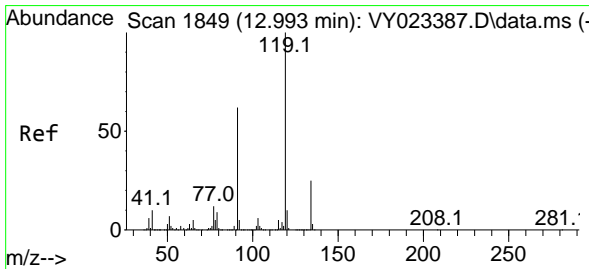
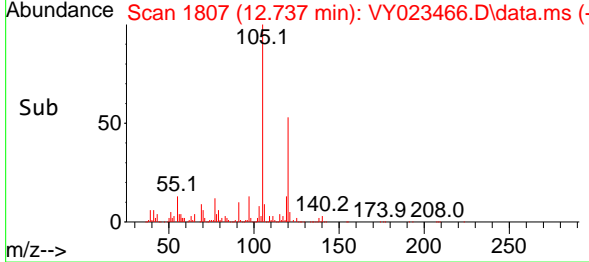
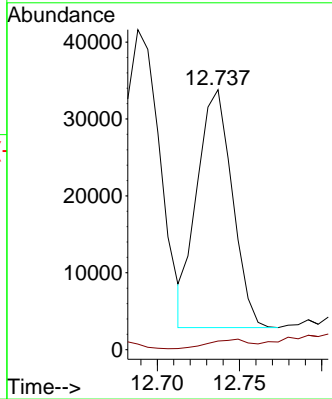
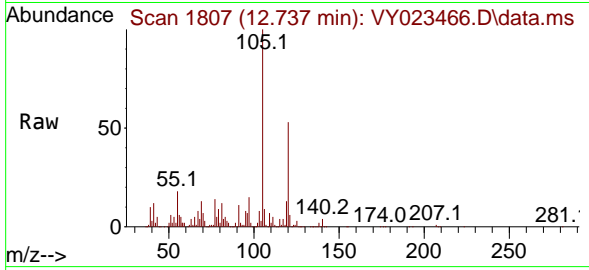




#82
 4-Chlorotoluene
 Concen: 2.668 ug/l
 RT: 12.737 min Scan# 1807
 Delta R.T. -0.037 min
 Lab File: VY023466.D
 Acq: 14 Oct 2025 16:50

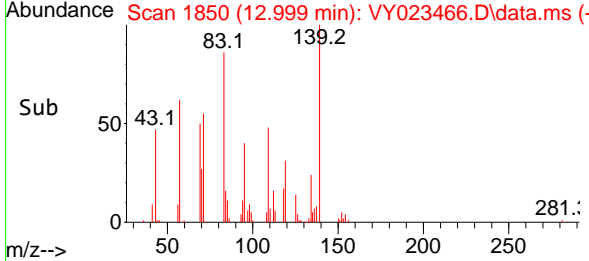
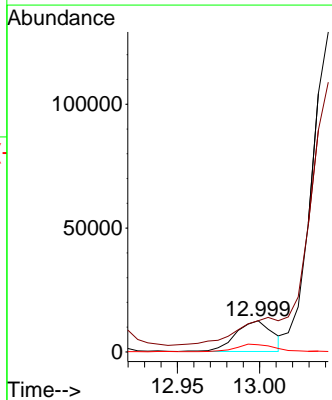
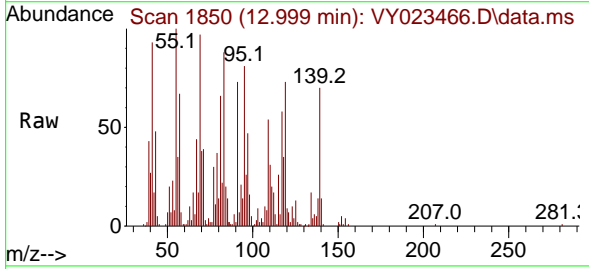
Instrument : MSVOA_Y
 ClientSampleId : M-R-SOIL

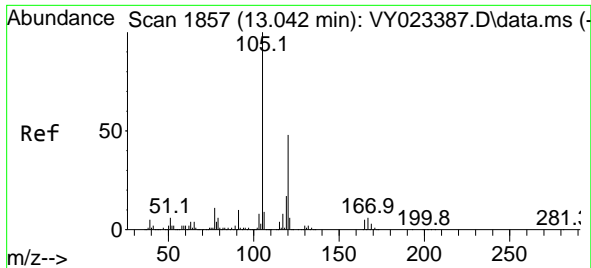
Tgt Ion: 91 Resp: 46114
 Ion Ratio Lower Upper
 91 100
 126 4.7 18.4 55.4#



#83
 tert-Butylbenzene
 Concen: 1.051 ug/l
 RT: 12.999 min Scan# 1850
 Delta R.T. 0.006 min
 Lab File: VY023466.D
 Acq: 14 Oct 2025 16:50

Tgt Ion: 119 Resp: 19418
 Ion Ratio Lower Upper
 119 100
 91 0.0 29.9 89.8#
 134 25.9 12.9 38.7

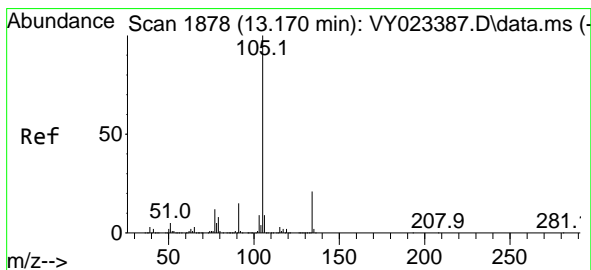
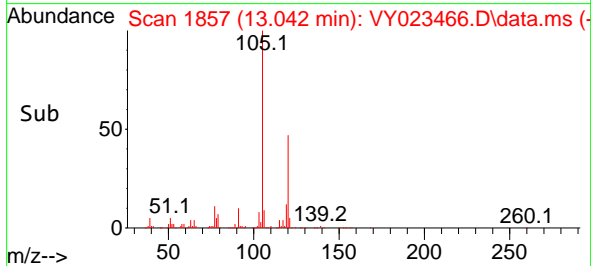
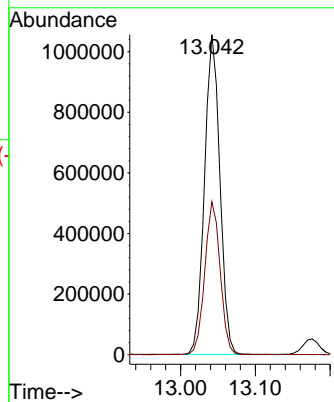
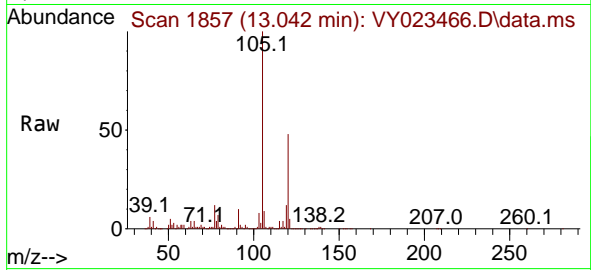




#84
 1,2,4-Trimethylbenzene
 Concen: 75.462 ug/l
 RT: 13.042 min Scan# 1857
 Delta R.T. 0.000 min
 Lab File: VY023466.D
 Acq: 14 Oct 2025 16:50

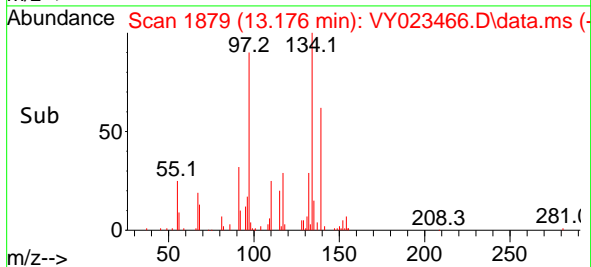
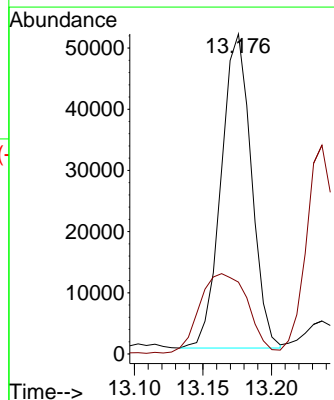
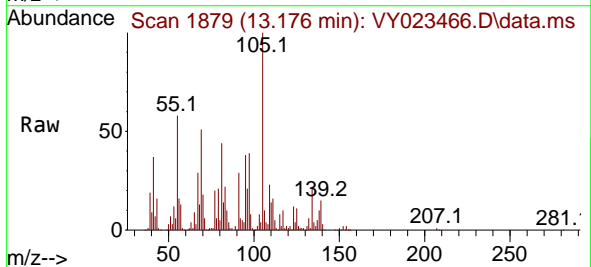
Instrument : MSVOA_Y
 ClientSampleId : M-R-SOIL

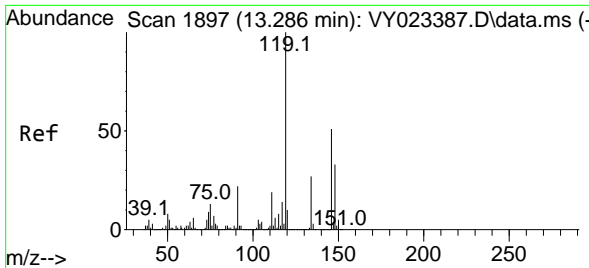
Tgt Ion:105 Resp: 1506925
 Ion Ratio Lower Upper
 105 100
 120 47.9 23.8 71.2



#85
 sec-Butylbenzene
 Concen: 2.976 ug/l
 RT: 13.176 min Scan# 1879
 Delta R.T. 0.006 min
 Lab File: VY023466.D
 Acq: 14 Oct 2025 16:50

Tgt Ion:105 Resp: 78870
 Ion Ratio Lower Upper
 105 100
 134 40.6 10.7 32.1#



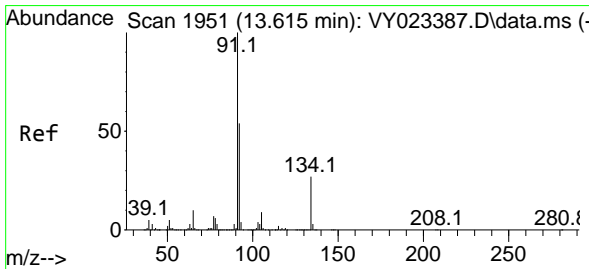
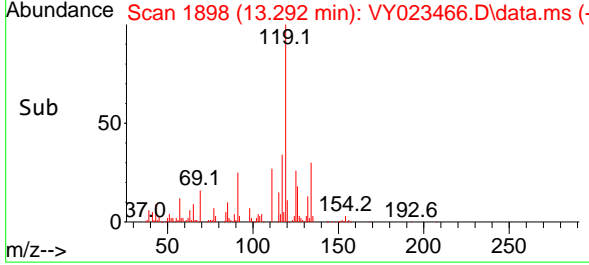
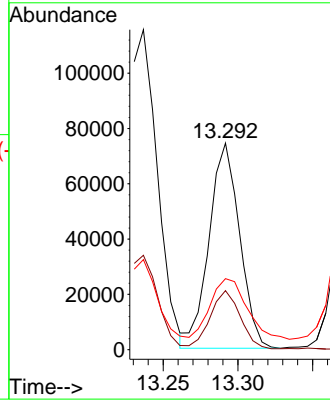
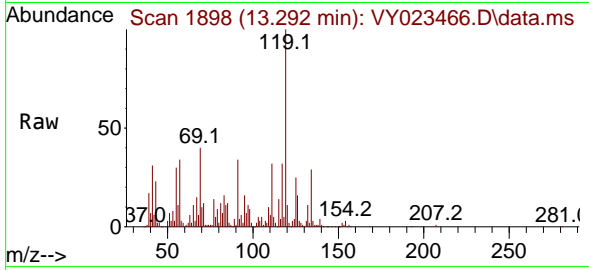


#86
 p-Isopropyltoluene
 Concen: 4.677 ug/l
 RT: 13.292 min Scan# 1898
 Delta R.T. 0.006 min
 Lab File: VY023466.D
 Acq: 14 Oct 2025 16:50

Instrument : MSVOA_Y
 ClientSampleId : M-R-SOIL

Tgt Ion:119 Resp: 105532

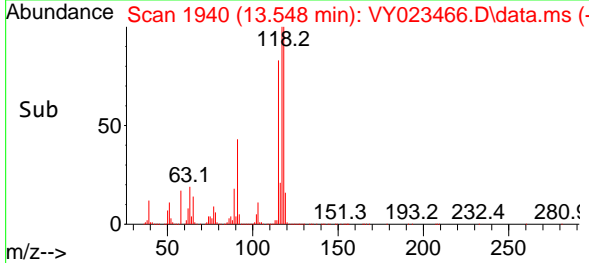
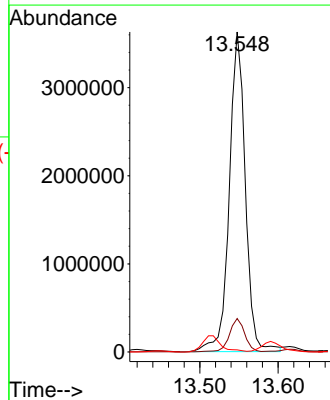
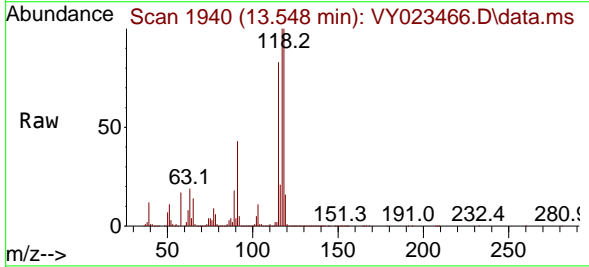
Ion	Ratio	Lower	Upper
119	100		
134	27.5	13.6	40.7
91	0.0	10.9	32.9#

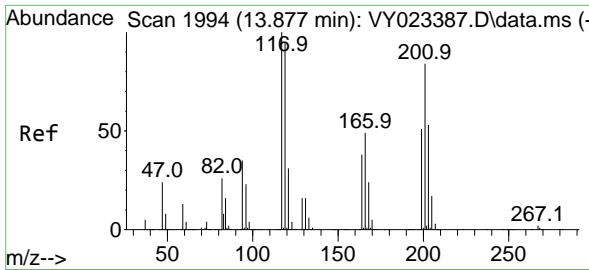


#89
 n-Butylbenzene
 Concen: 262.445 ug/l
 RT: 13.548 min Scan# 1940
 Delta R.T. -0.067 min
 Lab File: VY023466.D
 Acq: 14 Oct 2025 16:50

Tgt Ion: 91 Resp: 5159990

Ion	Ratio	Lower	Upper
91	100		
92	10.1	27.0	80.8#
134	0.0	14.1	42.2#

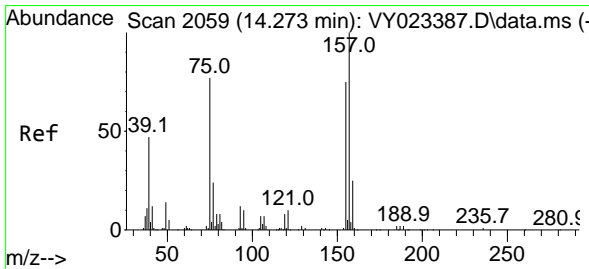
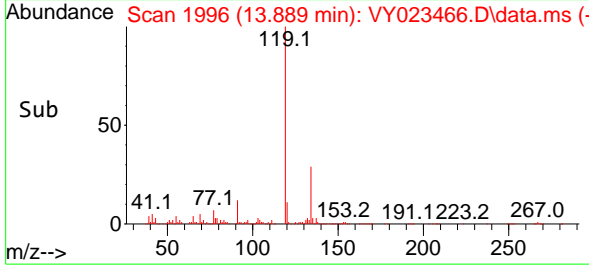
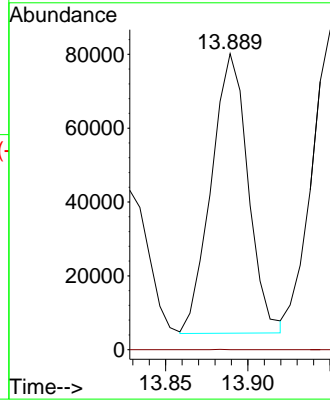
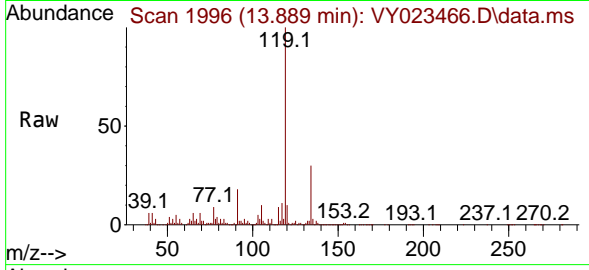




#90
 Hexachloroethane
 Concen: 24.316 ug/l
 RT: 13.889 min Scan# 1996
 Delta R.T. 0.012 min
 Lab File: VY023466.D
 Acq: 14 Oct 2025 16:50

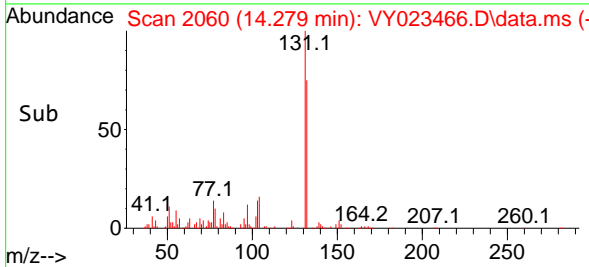
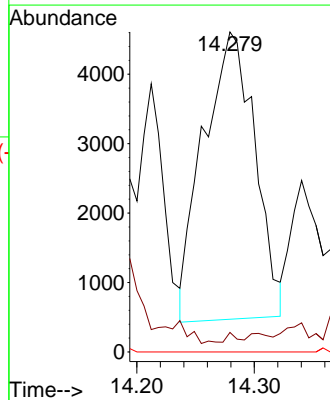
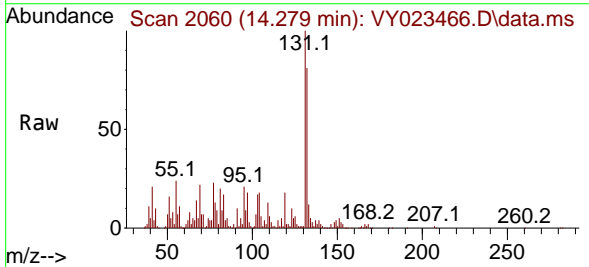
Instrument : MSVOA_Y
 ClientSampleId : M-R-SOIL

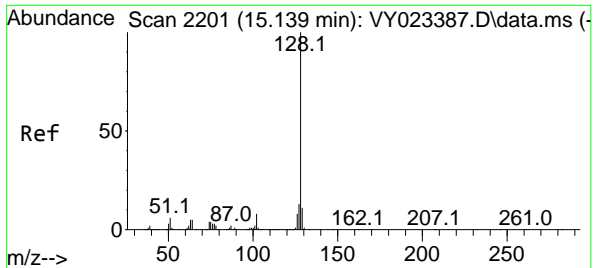
Tgt Ion:117 Resp: 118012
 Ion Ratio Lower Upper
 117 100
 201 0.0 43.8 131.4#



#92
 1,2-Dibromo-3-Chloropropane
 Concen: 19.000 ug/l
 RT: 14.279 min Scan# 2060
 Delta R.T. 0.006 min
 Lab File: VY023466.D
 Acq: 14 Oct 2025 16:50

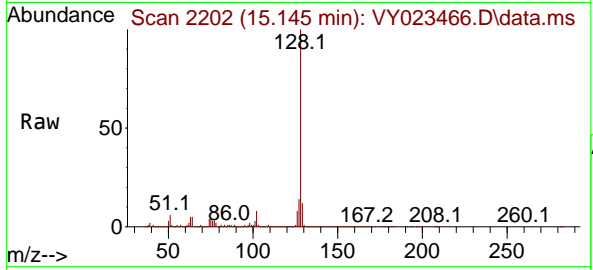
Tgt Ion: 75 Resp: 12626
 Ion Ratio Lower Upper
 75 100
 155 0.6 50.0 150.0#
 157 0.0 63.8 191.5#





#95
 Naphthalene
 Concen: 782.770 ug/l
 RT: 15.145 min Scan# 21
 Delta R.T. 0.006 min
 Lab File: VY023466.D
 Acq: 14 Oct 2025 16:50

Instrument :
 MSVOA_Y
 ClientSampleId :
 M-R-SOIL



Tgt Ion:128 Resp: 8733525

Ion	Ratio	Lower	Upper
128	100		
127	13.5	10.4	15.6
129	11.6	8.9	13.3

