

Data Path : Z:\voasrv\HPCHEM1\MSVOA_Y\Data\VY101425\
 Data File : VY023467.D
 Acq On : 14 Oct 2025 17:13
 Operator : SY/MD
 Sample : VIBLK
 Misc : 5.00g/5.0mL/MSVOA_Y/SOIL
 ALS Vial : 13 Sample Multiplier: 1

Instrument :
 MSVOA_Y
 ClientSampleId :
 SB2

Quant Time: Oct 15 03:31:59 2025
 Quant Method : Z:\voasrv\HPCHEM1\MSVOA_Y\methods\82Y100725S.M
 Quant Title : SW846 8260
 QLast Update : Wed Oct 08 05:12:50 2025
 Response via : Initial Calibration

Compound	R.T.	QIon	Response	Conc	Units	Dev(Min)

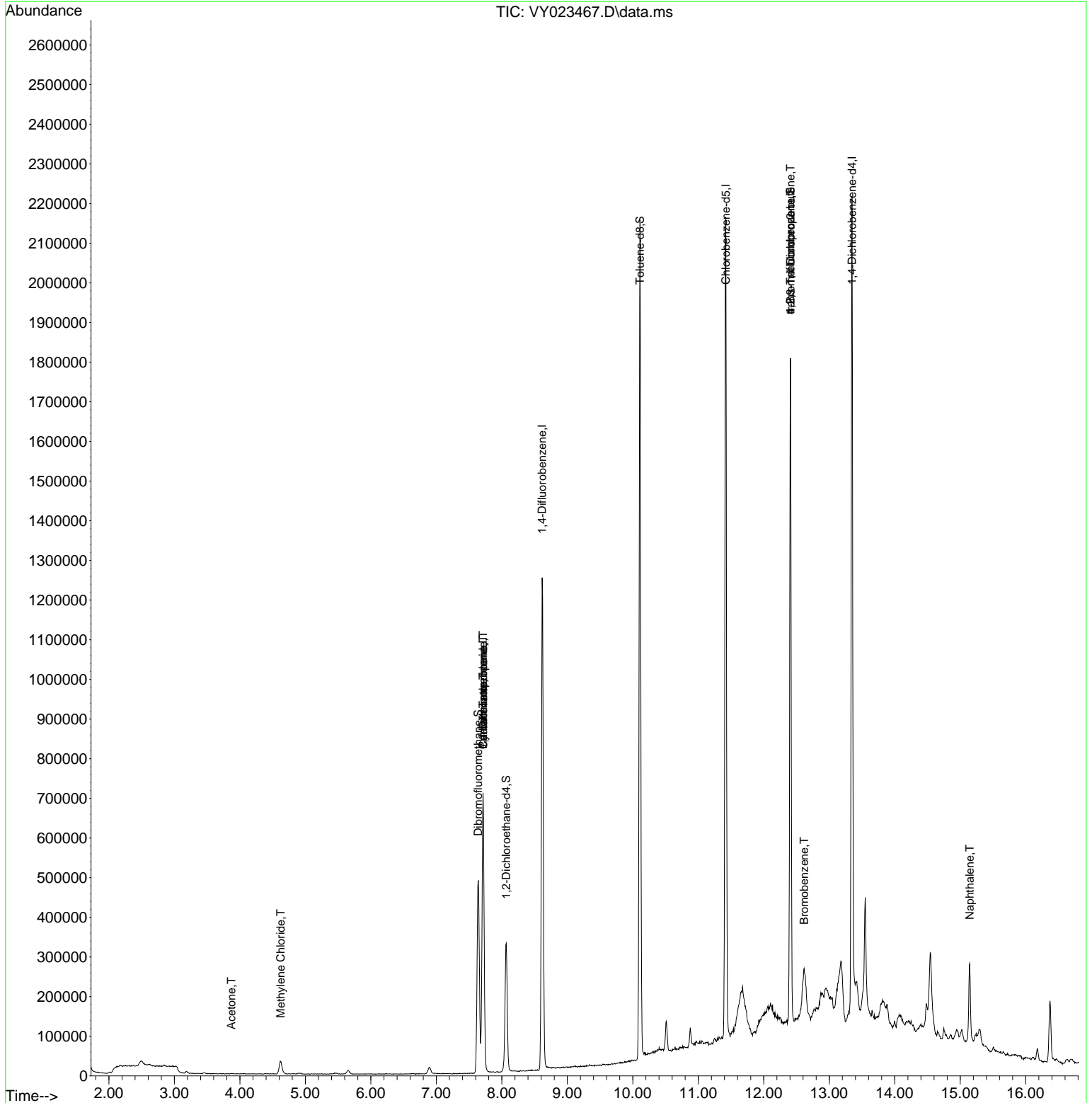
Internal Standards						
1) Pentafluorobenzene	7.713	168	582031	50.000	ug/l	0.00
34) 1,4-Difluorobenzene	8.616	114	1136657	50.000	ug/l	0.00
63) Chlorobenzene-d5	11.420	117	1183075	50.000	ug/l	0.00
72) 1,4-Dichlorobenzene-d4	13.347	152	559850	50.000	ug/l	0.00
System Monitoring Compounds						
33) 1,2-Dichloroethane-d4	8.067	65	253788	52.144	ug/l	0.00
Spiked Amount	50.000	Range	50 - 163	Recovery	=	104.280%
35) Dibromofluoromethane	7.640	113	357008	51.116	ug/l	0.00
Spiked Amount	50.000	Range	54 - 147	Recovery	=	102.240%
50) Toluene-d8	10.109	98	1401769	53.894	ug/l	0.00
Spiked Amount	50.000	Range	58 - 134	Recovery	=	107.780%
62) 4-Bromofluorobenzene	12.408	95	496170	57.780	ug/l	0.00
Spiked Amount	50.000	Range	30 - 143	Recovery	=	115.560%
Target Compounds						
					Qvalue	
16) Acetone	3.873	43	1199	1.035	ug/l #	72
20) Methylene Chloride	4.622	84	25275	4.034	ug/l	96
31) Cyclohexane	7.713	56	9548	1.179	ug/l #	1
36) 1,1-Dichloropropene	7.713	75	36841	3.984	ug/l #	48
38) Carbon Tetrachloride	7.713	117	52432	4.677	ug/l #	17
76) 1,2,3-Trichloropropane	12.408	75	241333	48.859	ug/l #	100
77) Bromobenzene	12.615	156	145380	14.822	ug/l #	1
81) trans-1,4-Dichloro-2-b...	12.408	75	241333	119.812	ug/l #	14
95) Naphthalene	15.145	128	164760	9.911	ug/l	99

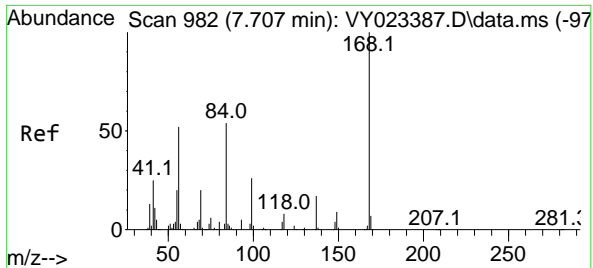
(#) = qualifier out of range (m) = manual integration (+) = signals summed

Data Path : Z:\voasrv\HPCHEM1\MSVOA_Y\Data\VY101425\
 Data File : VY023467.D
 Acq On : 14 Oct 2025 17:13
 Operator : SY/MD
 Sample : VIBLK
 Misc : 5.00g/5.0mL/MSVOA_Y/SOIL
 ALS Vial : 13 Sample Multiplier: 1

Instrument :
 MSVOA_Y
 ClientSampleId :
 SB2

Quant Time: Oct 15 03:31:59 2025
 Quant Method : Z:\voasrv\HPCHEM1\MSVOA_Y\methods\82Y100725S.M
 Quant Title : SW846 8260
 QLast Update : Wed Oct 08 05:12:50 2025
 Response via : Initial Calibration

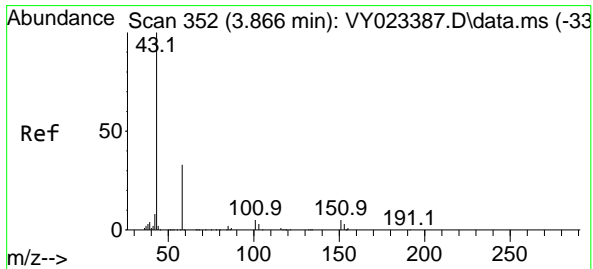
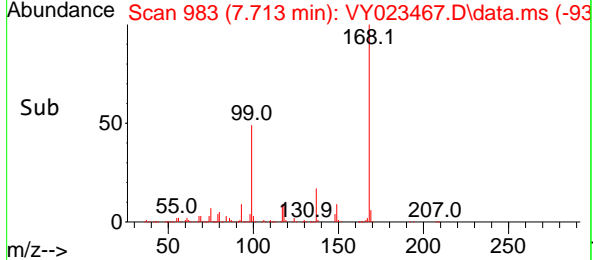
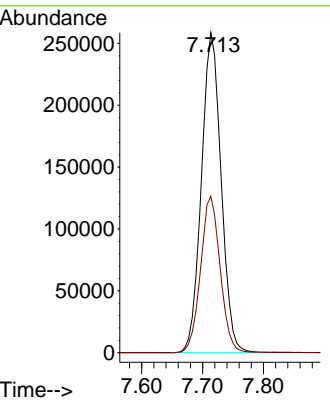
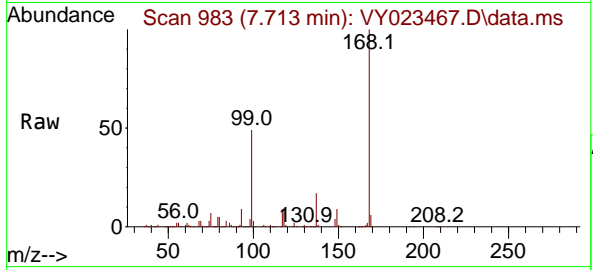




#1
 Pentafluorobenzene
 Concen: 50.000 ug/l
 RT: 7.713 min Scan# 91
 Delta R.T. 0.006 min
 Lab File: VY023467.D
 Acq: 14 Oct 2025 17:13

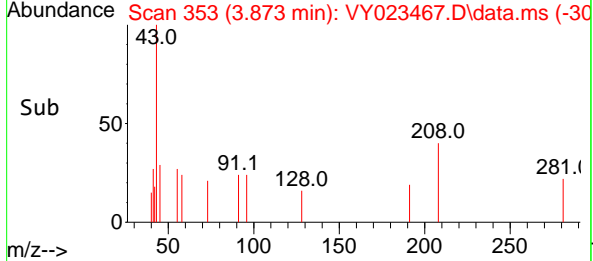
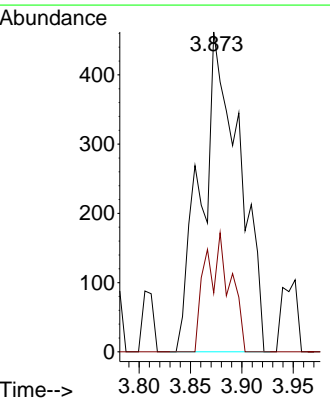
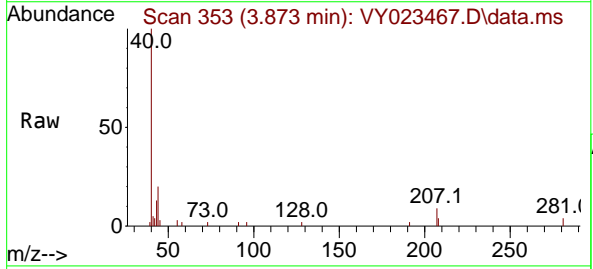
Instrument : MSVOA_Y
 ClientSampleId : SB2

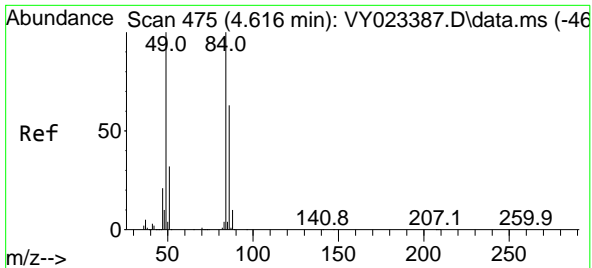
Tgt Ion:168 Resp: 582031
 Ion Ratio Lower Upper
 168 100
 99 48.9 39.7 59.5



#16
 Acetone
 Concen: 1.035 ug/l
 RT: 3.873 min Scan# 353
 Delta R.T. 0.006 min
 Lab File: VY023467.D
 Acq: 14 Oct 2025 17:13

Tgt Ion: 43 Resp: 1199
 Ion Ratio Lower Upper
 43 100
 58 18.4 27.7 41.5#



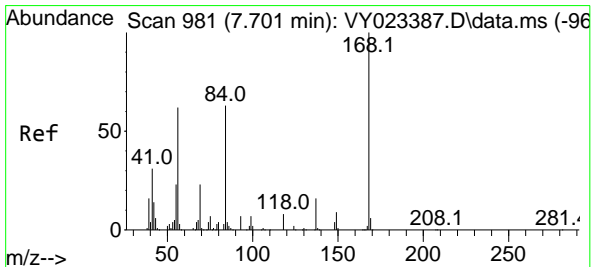
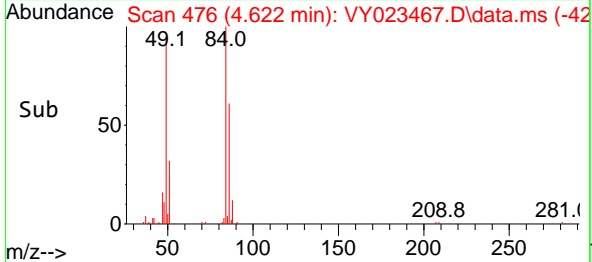
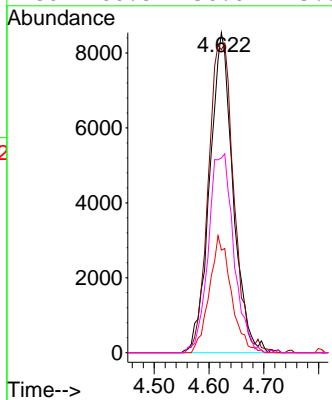
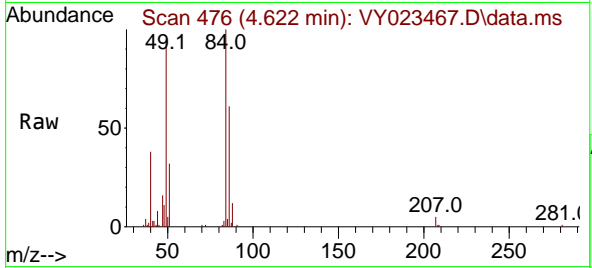


#20
Methylene Chloride
Concen: 4.034 ug/l
RT: 4.622 min Scan# 41
Delta R.T. 0.006 min
Lab File: VY023467.D
Acq: 14 Oct 2025 17:13

Instrument :
MSVOA_Y
ClientSampleId :
SB2

Tgt Ion: 84 Resp: 25275

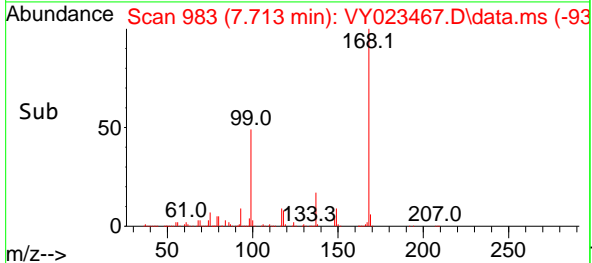
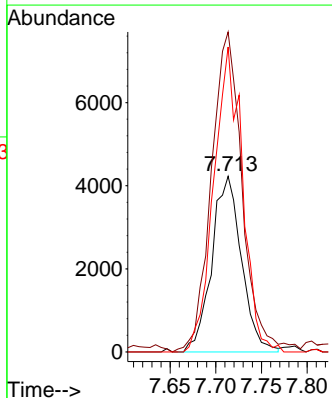
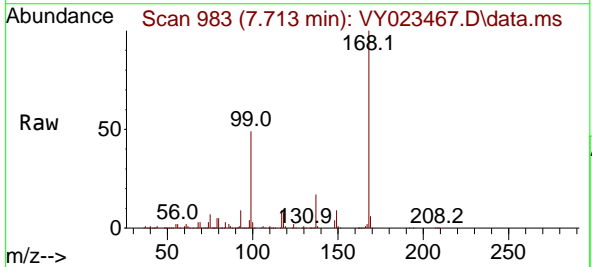
Ion	Ratio	Lower	Upper
84	100		
49	94.7	80.2	120.4
51	32.1	25.9	38.9
86	60.8	50.6	75.8

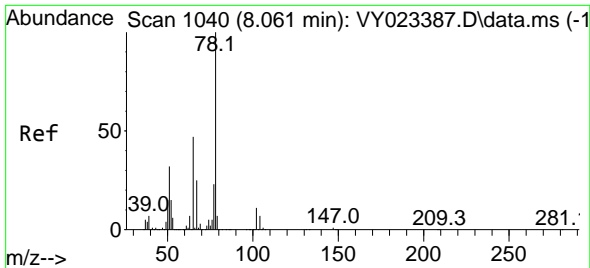


#31
Cyclohexane
Concen: 1.179 ug/l
RT: 7.713 min Scan# 983
Delta R.T. 0.012 min
Lab File: VY023467.D
Acq: 14 Oct 2025 17:13

Tgt Ion: 56 Resp: 9548

Ion	Ratio	Lower	Upper
56	100		
69	180.5	30.0	45.0#
84	173.6	81.2	121.8#

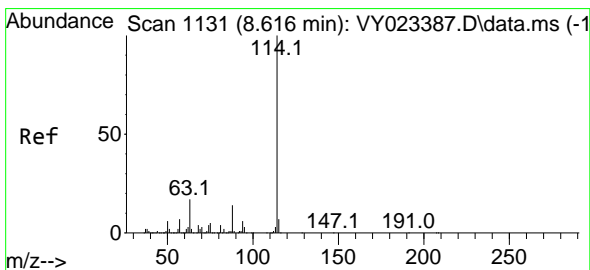
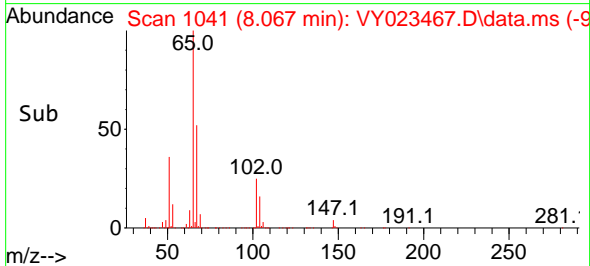
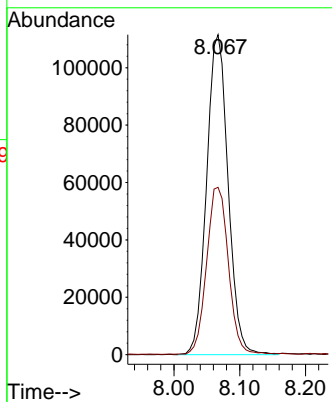
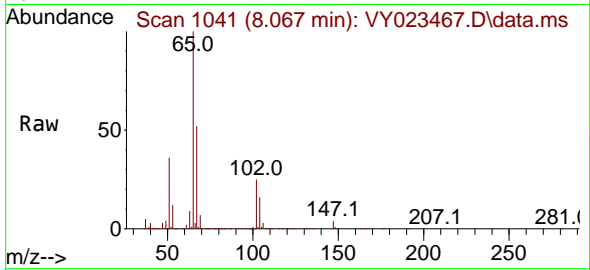




#33
 1,2-Dichloroethane-d4
 Concen: 52.144 ug/l
 RT: 8.067 min Scan# 1041
 Delta R.T. 0.006 min
 Lab File: VY023467.D
 Acq: 14 Oct 2025 17:13

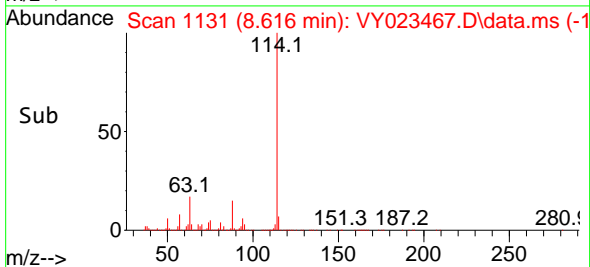
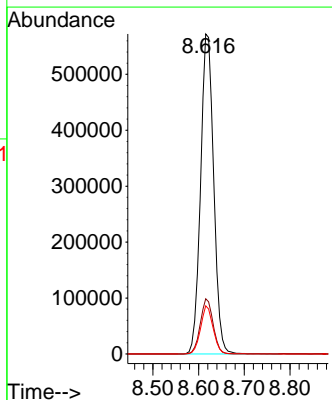
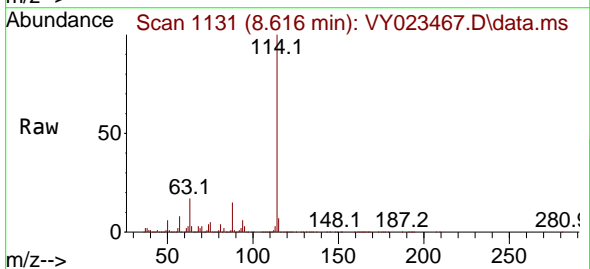
Instrument : MSVOA_Y
 ClientSampleId : SB2

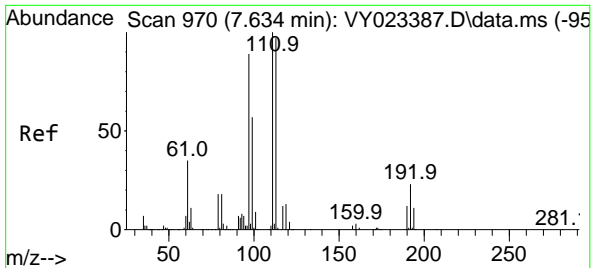
Tgt Ion: 65 Resp: 253788
 Ion Ratio Lower Upper
 65 100
 67 53.0 0.0 105.8



#34
 1,4-Difluorobenzene
 Concen: 50.000 ug/l
 RT: 8.616 min Scan# 1131
 Delta R.T. 0.000 min
 Lab File: VY023467.D
 Acq: 14 Oct 2025 17:13

Tgt Ion:114 Resp: 1136657
 Ion Ratio Lower Upper
 114 100
 63 17.3 0.0 34.2
 88 15.1 0.0 28.4



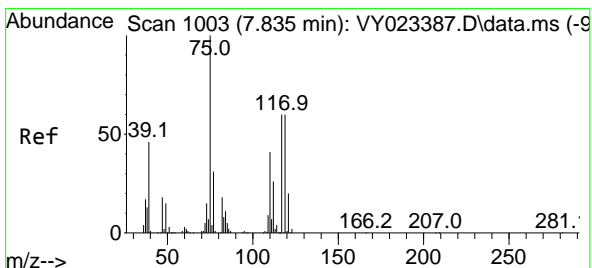
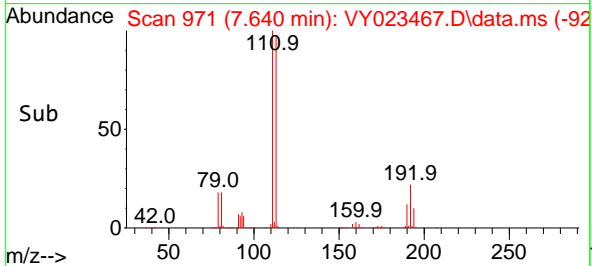
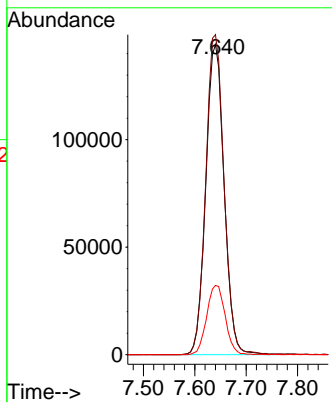
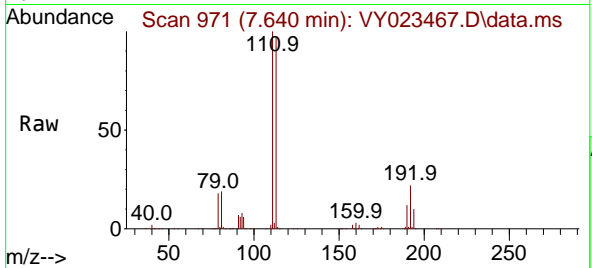


#35
 Dibromofluoromethane
 Concen: 51.116 ug/l
 RT: 7.640 min Scan# 91
 Delta R.T. 0.006 min
 Lab File: VY023467.D
 Acq: 14 Oct 2025 17:13

Instrument : MSVOA_Y
 ClientSampleId : SB2

Tgt Ion:113 Resp: 357008

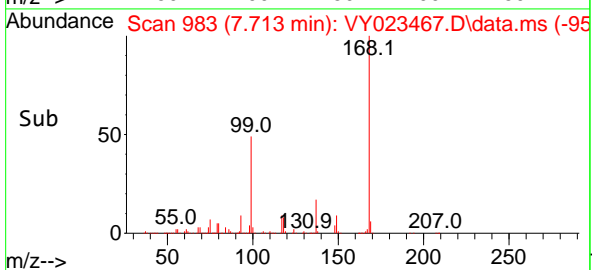
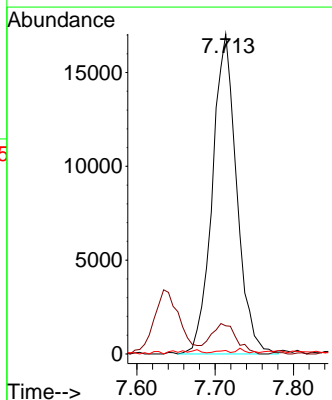
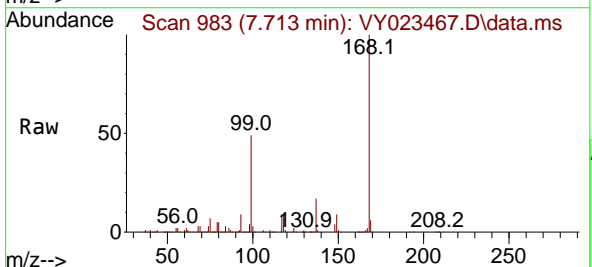
Ion	Ratio	Lower	Upper
113	100		
111	102.9	81.8	122.6
192	22.5	18.0	27.0

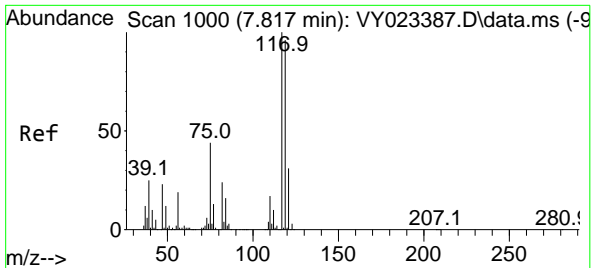


#36
 1,1-Dichloropropene
 Concen: 3.984 ug/l
 RT: 7.713 min Scan# 983
 Delta R.T. -0.122 min
 Lab File: VY023467.D
 Acq: 14 Oct 2025 17:13

Tgt Ion: 75 Resp: 36841

Ion	Ratio	Lower	Upper
75	100		
110	9.8	19.9	59.7#
77	0.5	25.0	37.6#

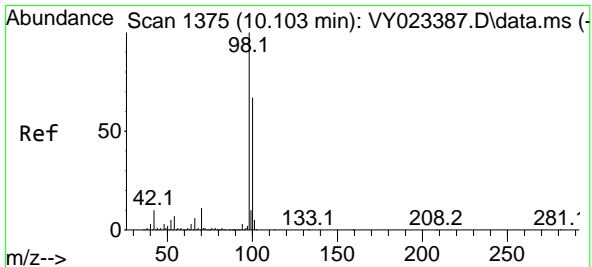
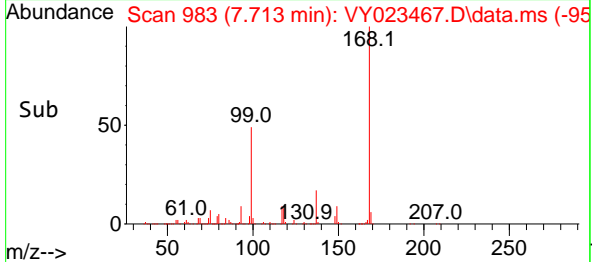
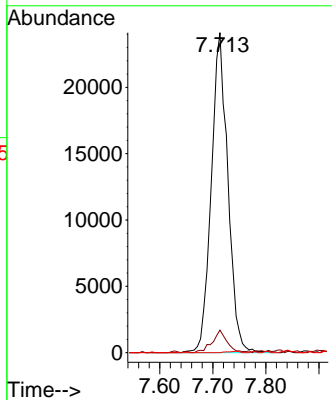
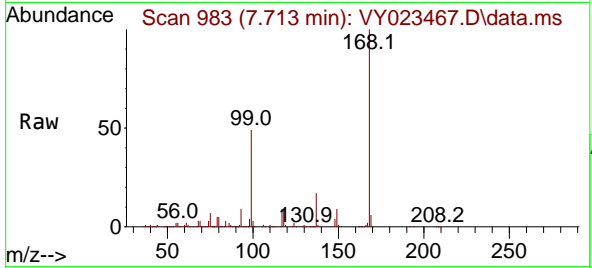




#38
 Carbon Tetrachloride
 Concen: 4.677 ug/l
 RT: 7.713 min Scan# 91
 Delta R.T. -0.104 min
 Lab File: VY023467.D
 Acq: 14 Oct 2025 17:13

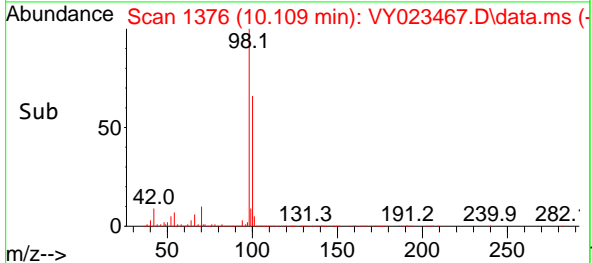
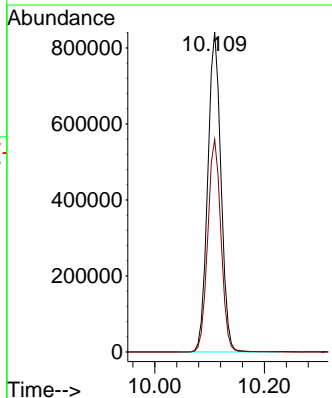
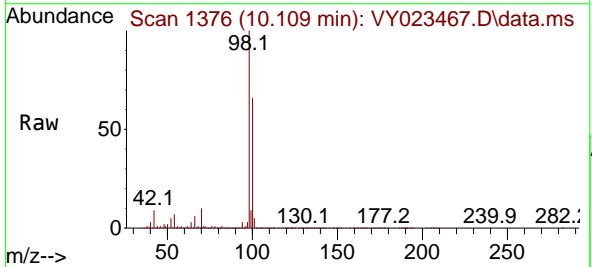
Instrument : MSVOA_Y
 ClientSampleId : SB2

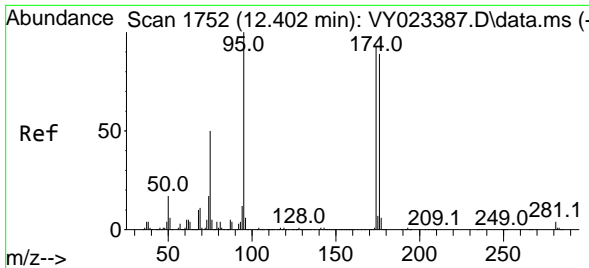
Tgt Ion:117 Resp: 52432
 Ion Ratio Lower Upper
 117 100
 119 6.8 76.8 115.2#
 121 0.0 24.5 36.7#



#50
 Toluene-d8
 Concen: 53.894 ug/l
 RT: 10.109 min Scan# 1376
 Delta R.T. 0.006 min
 Lab File: VY023467.D
 Acq: 14 Oct 2025 17:13

Tgt Ion: 98 Resp: 1401769
 Ion Ratio Lower Upper
 98 100
 100 66.4 53.0 79.4

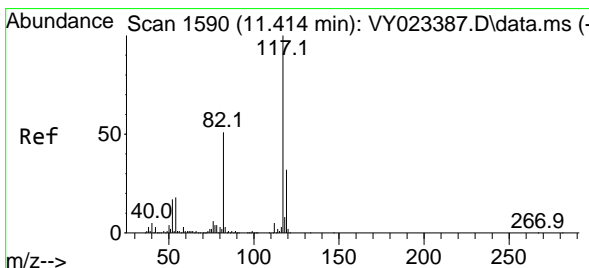
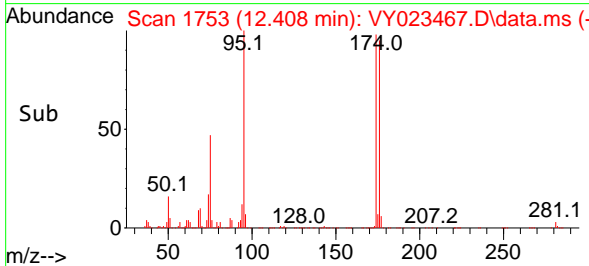
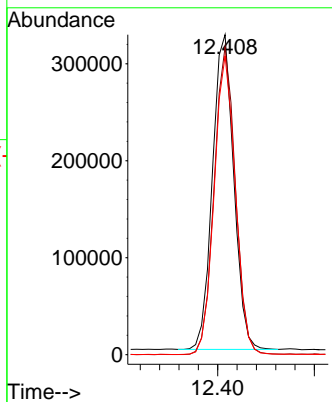
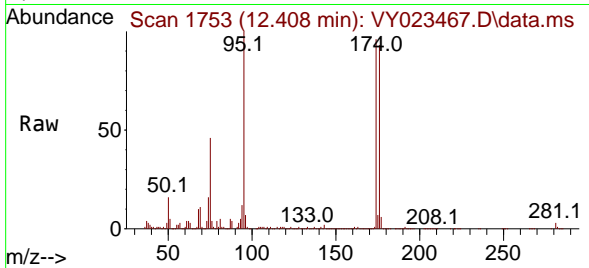




#62
 4-Bromofluorobenzene
 Concen: 57.780 ug/l
 RT: 12.408 min Scan# 11
 Delta R.T. 0.006 min
 Lab File: VY023467.D
 Acq: 14 Oct 2025 17:13

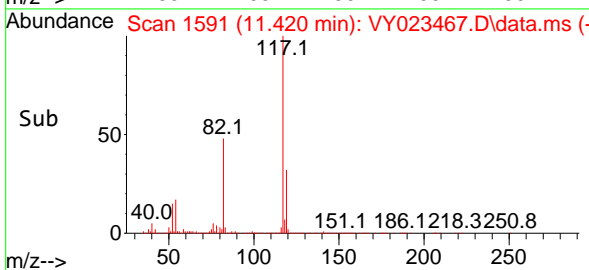
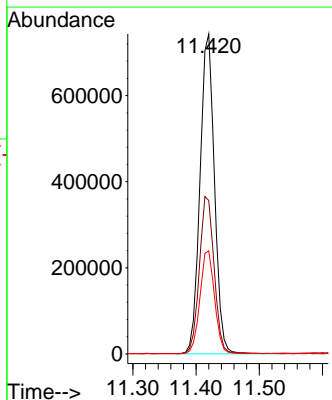
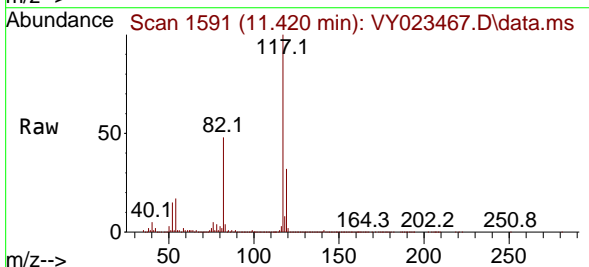
Instrument :
 MSVOA_Y
 ClientSampleId :
 SB2

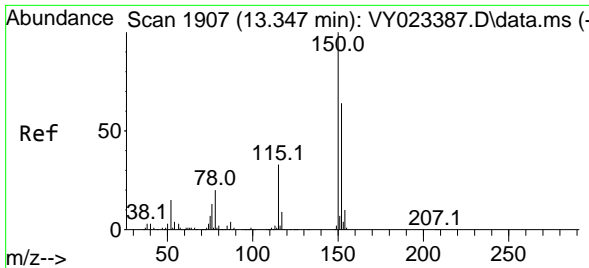
Tgt Ion	Resp	Ion Ratio	Lower	Upper
95	496170	100		
174	97.3	0.0	192.8	
176	94.5	0.0	187.6	



#63
 Chlorobenzene-d5
 Concen: 50.000 ug/l
 RT: 11.420 min Scan# 1591
 Delta R.T. 0.006 min
 Lab File: VY023467.D
 Acq: 14 Oct 2025 17:13

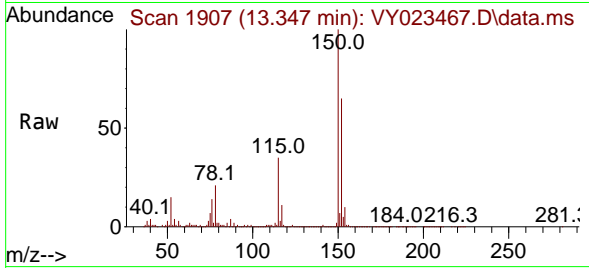
Tgt Ion	Resp	Ion Ratio	Lower	Upper
117	1183075	100		
82	47.8	41.0	61.4	
119	32.2	25.6	38.4	



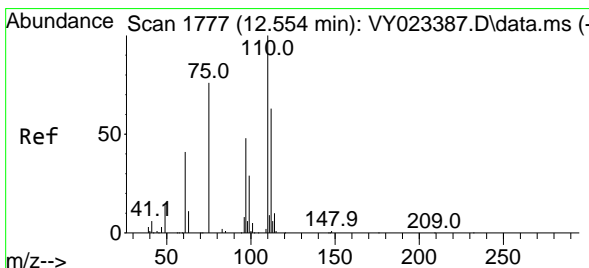
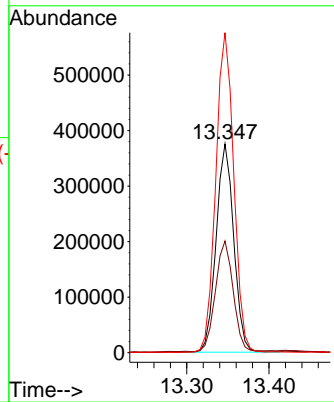
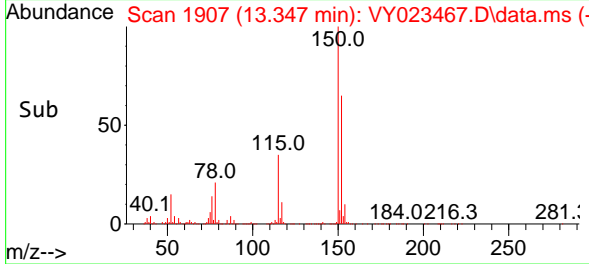


#72
 1,4-Dichlorobenzene-d4
 Concen: 50.000 ug/l
 RT: 13.347 min Scan# 1907
 Delta R.T. 0.000 min
 Lab File: VY023467.D
 Acq: 14 Oct 2025 17:13

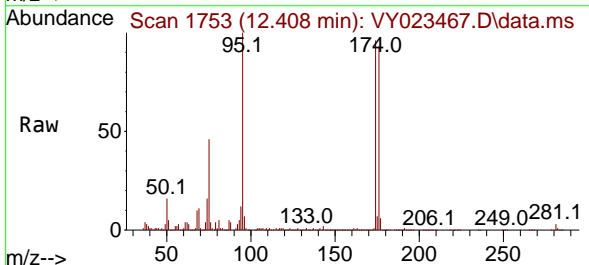
Instrument : MSVOA_Y
 ClientSampleId : SB2



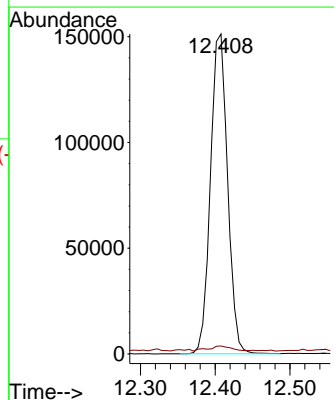
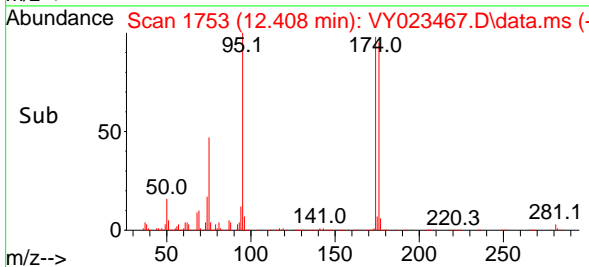
Tgt Ion:152 Resp: 559850
 Ion Ratio Lower Upper
 152 100
 115 54.2 27.1 81.2
 150 156.1 0.0 347.4

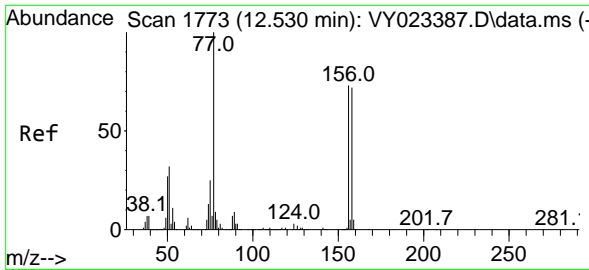


#76
 1,2,3-Trichloropropane
 Concen: 48.859 ug/l
 RT: 12.408 min Scan# 1753
 Delta R.T. -0.146 min
 Lab File: VY023467.D
 Acq: 14 Oct 2025 17:13



Tgt Ion: 75 Resp: 241333
 Ion Ratio Lower Upper
 75 100
 77 2.1 0.0 0.0#



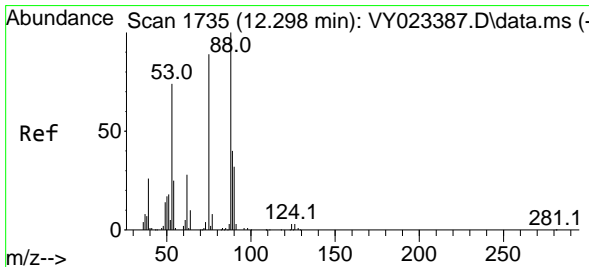
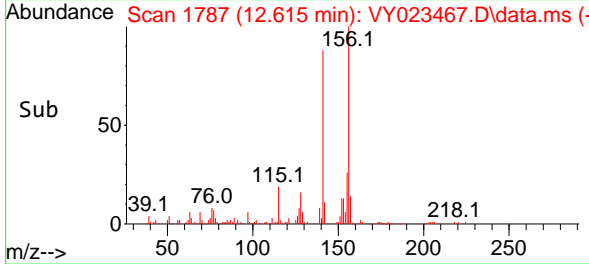
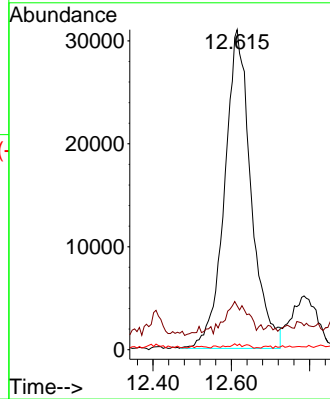
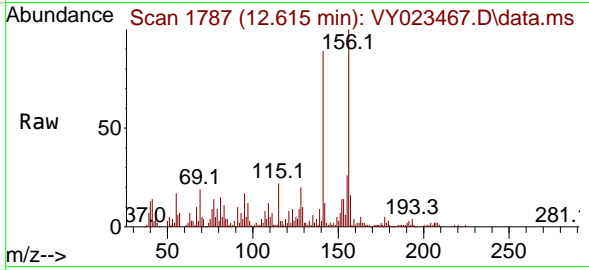


#77
 Bromobenzene
 Concen: 14.822 ug/l
 RT: 12.615 min Scan# 1787
 Delta R.T. 0.085 min
 Lab File: VY023467.D
 Acq: 14 Oct 2025 17:13

Instrument : MSVOA_Y
 ClientSampleId : SB2

Tgt Ion:156 Resp: 145380

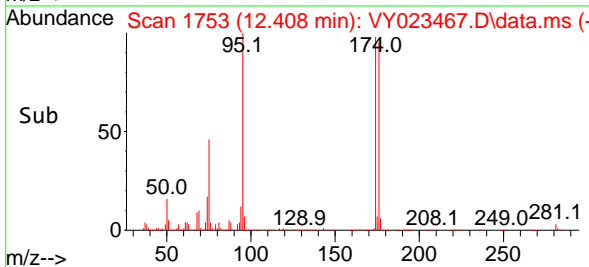
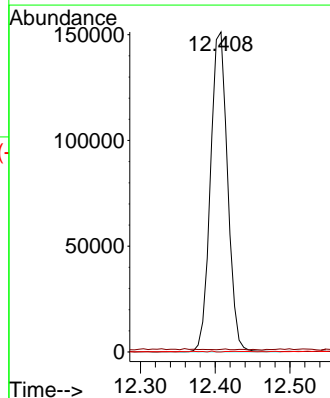
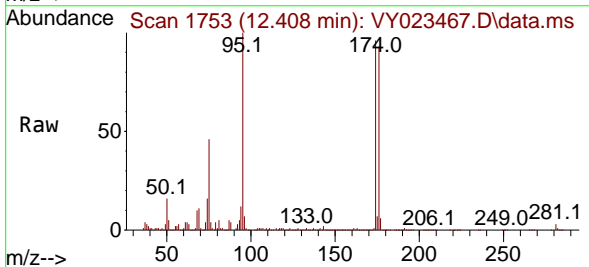
Ion	Ratio	Lower	Upper
156	100		
77	8.3	76.8	230.5#
158	0.2	49.0	147.2#

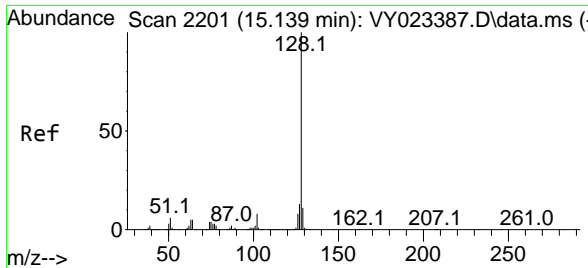


#81
 trans-1,4-Dichloro-2-butene
 Concen: 119.812 ug/l
 RT: 12.408 min Scan# 1753
 Delta R.T. 0.110 min
 Lab File: VY023467.D
 Acq: 14 Oct 2025 17:13

Tgt Ion: 75 Resp: 241333

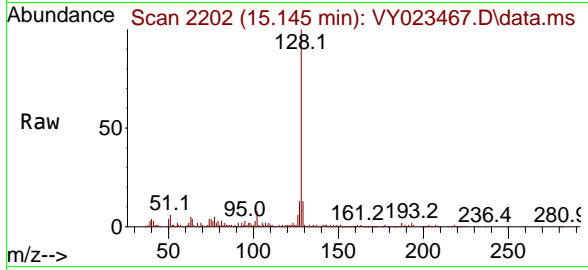
Ion	Ratio	Lower	Upper
75	100		
53	0.1	68.6	102.8#
89	0.0	39.0	58.4#





#95
 Naphthalene
 Concen: 9.911 ug/l
 RT: 15.145 min Scan# 21
 Delta R.T. 0.006 min
 Lab File: VY023467.D
 Acq: 14 Oct 2025 17:13

Instrument : MSVOA_Y
 ClientSampleId : SB2



Tgt Ion:128 Resp: 164760

Ion	Ratio	Lower	Upper
128	100		
127	12.7	10.4	15.6
129	11.6	8.9	13.3

